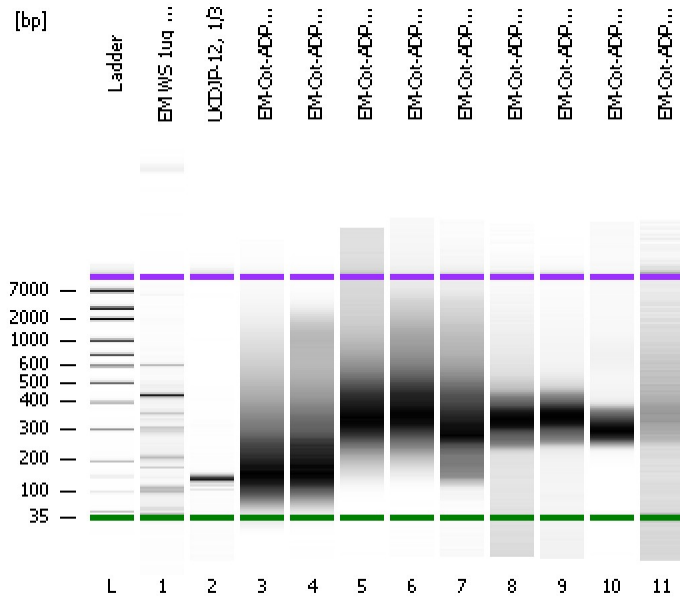


Assay Class: High Sensitivity DNA Assay
Data Path: C:\...ents and Settings\Bioanalyzer\2012-03-20\2012-03-20_001.xad

Created: 3/20/2012 11:16:11 AM
Modified: 3/20/2012 12:02:36 PM

Electrophoresis File Run Summary



Instrument Information:

Instrument Name: DE13701086 Firmware: C.01.069
Serial#: DE13701086 Type: G2938B

Assay Information:

Assay Origin Path: C:\Program Files\Agilent\2100 bioanalyzer\2100 expert\assays\dsDNA\High Sensitivity DNA.xsy
Assay Class: High Sensitivity DNA Assay
Version: 1.03
Assay Comments: Copyright © 2003-2010 Agilent Technologies

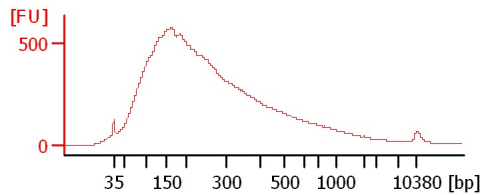
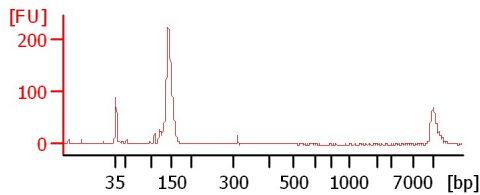
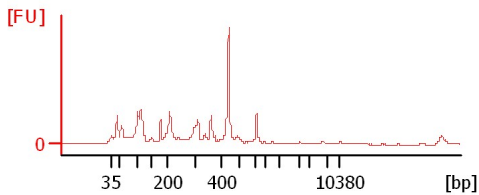
Chip Information:

Chip Lot #:
Reagent Kit Lot #:
Chip Comments:

EM WS 1ug 1/3 miRNA lib

UCDJP-12, 1/3

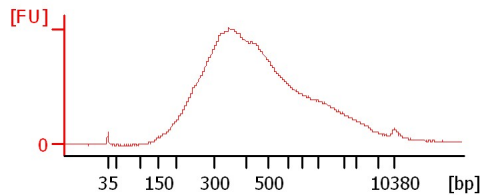
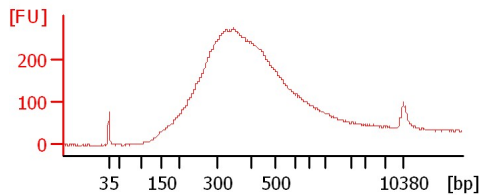
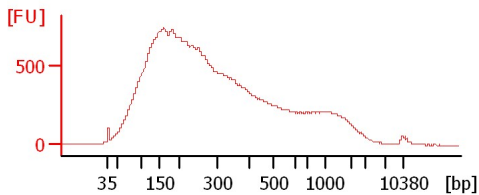
EM-Cot-ADPY-1-PS Frag



EM-Cot-ADPY-1-EXON Frag

EM-Cot-ADPY-1-PS adapter ligated

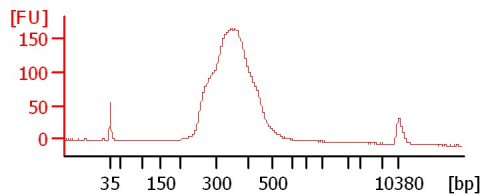
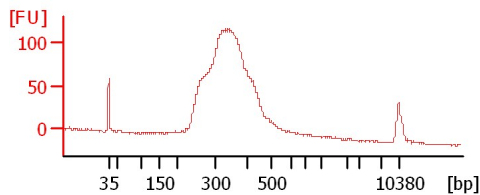
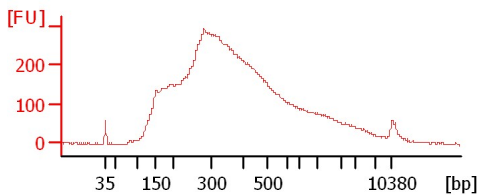
EM-Cot-ADPY-1 EXON adapter ligated



EM-Cot-ADPY-1 EXON adapter ligated, 1...

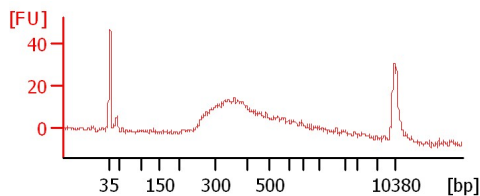
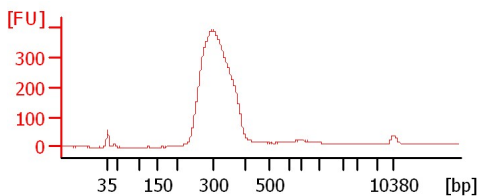
EM-Cot-ADPY-1 PS unampl. lib

EM-Cot-ADPY-1 EXON unampl. lib



EM-Cot-ADPY-1 PS library

EM-Cot-ADPY-1 EXON library



Assay Class: High Sensitivity DNA Assay
Data Path: C:\...ents and Settings\Bioanalyzer\2012-03-20\2012-03-20_001.xad

Created: 3/20/2012 11:16:11 AM
Modified: 3/20/2012 12:02:36 PM

Electrophoresis File Run Summary (Chip Summary)

Sample Name	Sample Comment	Rest. Digest	Status	Observation	Result Label	Result Color
EM WS 1ug 1/3 miRNA lib		<input type="checkbox"/>	✓			
UCDJP-12, 1/3		<input type="checkbox"/>	✓			
EM-Cot-ADPY-1-PS Frag		<input type="checkbox"/>	✓			
EM-Cot-ADPY-1-EXON Frag		<input type="checkbox"/>	✓			
EM-Cot-ADPY-1-PS adapter ligated		<input type="checkbox"/>	✓			
EM-Cot-ADPY-1 EXON adapter ligated		<input type="checkbox"/>	✓			
EM-Cot-ADPY-1 EXON adapter ligated, 1st elution		<input type="checkbox"/>	✓			
EM-Cot-ADPY-1 PS unampl. lib		<input type="checkbox"/>	✓			
EM-Cot-ADPY-1 EXON unampl. lib		<input type="checkbox"/>	✓			
EM-Cot-ADPY-1 PS library		<input type="checkbox"/>	✓			
EM-Cot-ADPY-1 EXON library		<input type="checkbox"/>	✓			
Ladder		<input type="checkbox"/>	✓			

Chip Lot #

Reagent Kit Lot #

Chip Comments :

Assay Class: High Sensitivity DNA Assay
Data Path: C:\...ents and Settings\Bioanalyzer\2012-03-20\2012-03-20_001.xad

Created: 3/20/2012 11:16:11 AM
Modified: 3/20/2012 12:02:36 PM

Electrophoresis Assay Details

General Analysis Settings

Number of Available Sample and Ladder Wells (Max.) : 12
Minimum Visible Range [s] : 32
Maximum Visible Range [s] : 138
Start Analysis Time Range [s] : 33
End Analysis Time Range [s] : 137.5
Ladder Concentration [pg/μl] : 1950
Uses Standard Area for Ladder Fragments
Lower Marker Concentration [pg/μl] : 125
Upper Marker Concentration [pg/μl] : 75
Used Upper Marker for Quantitation
Standard Curve Fit is Point to Point
Show Data Aligned to Lower and Upper Marker

Integrator Settings

Integration Start Time [s] : 33.05
Integration End Time [s] : 137
Slope Threshold : 0.8
Height Threshold [FU] : 5
Area Threshold : 0.1
Width Threshold [s] : 0.6
Baseline Plateau [s] : 0.5

Filter Settings

Filter Width [s] : 0.5
Polynomial Order : 4

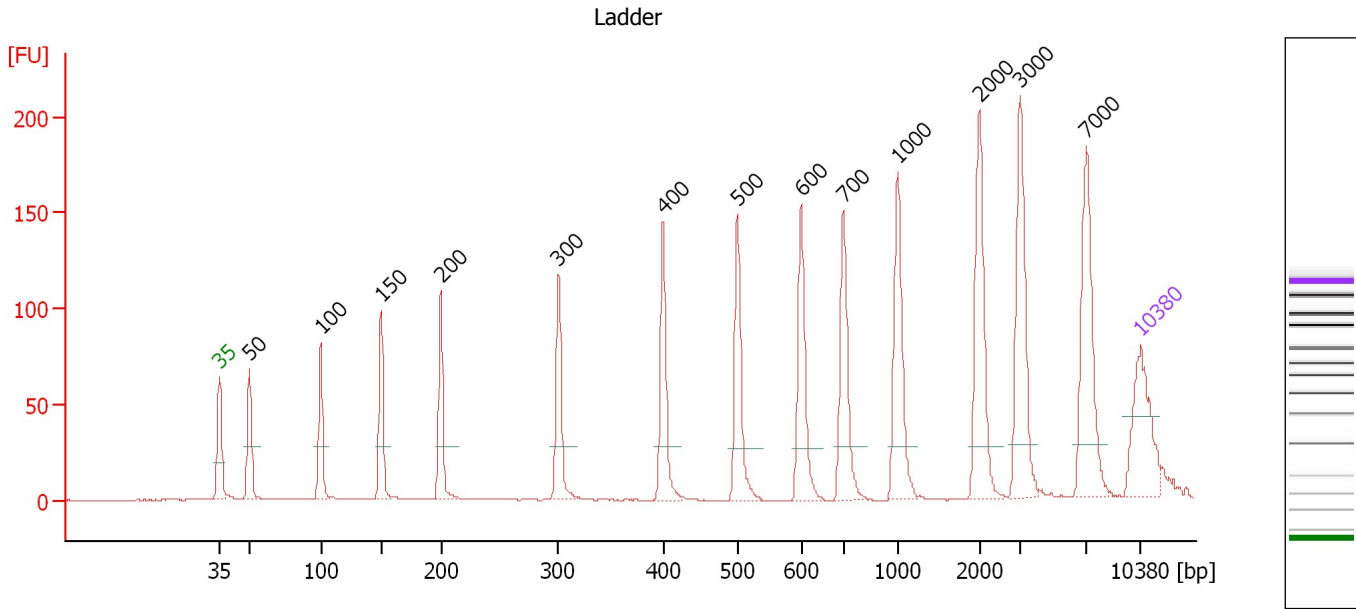
Ladder

Ladder Peak	Size	Area
1	35	160
2	50	210
3	100	208
4	150	221
5	200	242
6	300	270
7	400	305
8	500	306
9	600	336
10	700	321
11	1000	366
12	2000	413
13	3000	411
14	7000	400
15	10380	214

Assay Class: High Sensitivity DNA Assay
 Data Path: C:\...ents and Settings\Bioanalyzer\2012-03-20\2012-03-20_001.xad

Created: 3/20/2012 11:16:11 AM
 Modified: 3/20/2012 12:02:36 PM

Electropherogram Summary



Overall Results for Ladder

Noise: 0.2

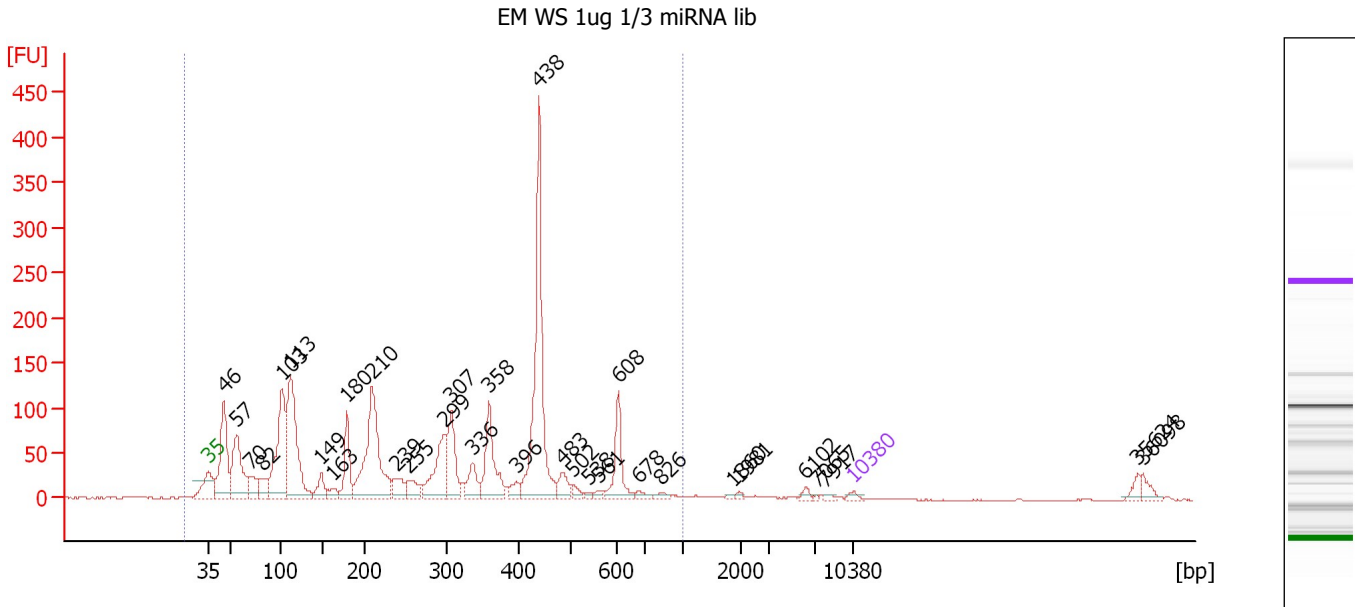
Peak table for Ladder

Peak	Size [bp]	Conc. [pg/μl]	Molarity [pmol/l]	Observations
1	35	125.00	5,411.3	Lower Marker
2	50	150.00	4,545.5	Ladder Peak
3	100	150.00	2,272.7	Ladder Peak
4	150	150.00	1,515.2	Ladder Peak
5	200	150.00	1,136.4	Ladder Peak
6	300	150.00	757.6	Ladder Peak
7	400	150.00	568.2	Ladder Peak
8	500	150.00	454.5	Ladder Peak
9	600	150.00	378.8	Ladder Peak
10	700	150.00	324.7	Ladder Peak
11	1,000	150.00	227.3	Ladder Peak
12	2,000	150.00	113.6	Ladder Peak
13	3,000	150.00	75.8	Ladder Peak
14	7,000	150.00	32.5	Ladder Peak
15	10,380	75.00	10.9	Upper Marker

Assay Class: High Sensitivity DNA Assay
 Data Path: C:\...ents and Settings\Bioanalyzer\2012-03-20\2012-03-20_001.xad

Created: 3/20/2012 11:16:11 AM
 Modified: 3/20/2012 12:02:36 PM

Electropherogram Summary Continued ...



Overall Results for sample 1 : EM WS 1ug 1/3 miRNA lib

Number of peaks found: 32 Corr. Area 1: 2,542.6
 Noise: 0.5

Peak table for sample 1 : EM WS 1ug 1/3 miRNA lib

Peak	Size [bp]	Conc. [pg/μl]	Molarity [pmol/l]	Observations
1	35	125.00	5,411.3	Lower Marker
2	46	2,916.54	96,654.5	
3	57	2,426.28	64,679.7	
4	70	628.44	13,569.8	
5	82	589.58	10,906.9	
6	103	3,525.47	52,077.0	
7	113	4,236.70	56,963.5	
8	149	563.03	5,711.1	
9	163	268.30	2,487.8	
10	180	1,232.07	10,371.4	
11	210	3,980.39	28,702.5	
12	239	572.42	3,625.5	
13	255	531.34	3,152.3	
14	299	1,687.42	8,540.3	
15	307	1,357.48	6,692.9	
16	336	656.01	2,954.0	
17	358	1,633.42	6,906.3	
18	396	249.00	952.1	
19	438	4,897.94	16,956.3	
20	483	447.17	1,404.0	
21	502	163.66	493.6	
22	538	66.60	187.4	
23	561	110.35	297.9	
24	608	1,057.62	2,634.1	
25	678	138.21	308.8	
26	826	116.17	213.1	

Assay Class: High Sensitivity DNA Assay
 Data Path: C:\...ents and Settings\Bioanalyzer\2012-03-20\2012-03-20_001.xad


Created: 3/20/2012 11:16:11 AM
 Modified: 3/20/2012 12:02:36 PM

Electropherogram Summary Continued ...

... Peak table for sample 1 : EM WS 1ug 1/3 miRNA lib

Peak	Size [bp]	Conc. [pg/μl]	Molarity [pmol/l]	Observations
27	1,860	43.51	35.5	
28	1,981	58.61	44.8	
29	6,102	92.51	23.0	
30	7,065	26.66	5.7	
31	7,917	53.60	10.3	
32	10,380	75.00	10.9	Upper Marker
33	35,624	0.00	0.0	
34	36,098	0.00	0.0	

Region table for sample 1 : EM WS 1ug 1/3 miRNA lib

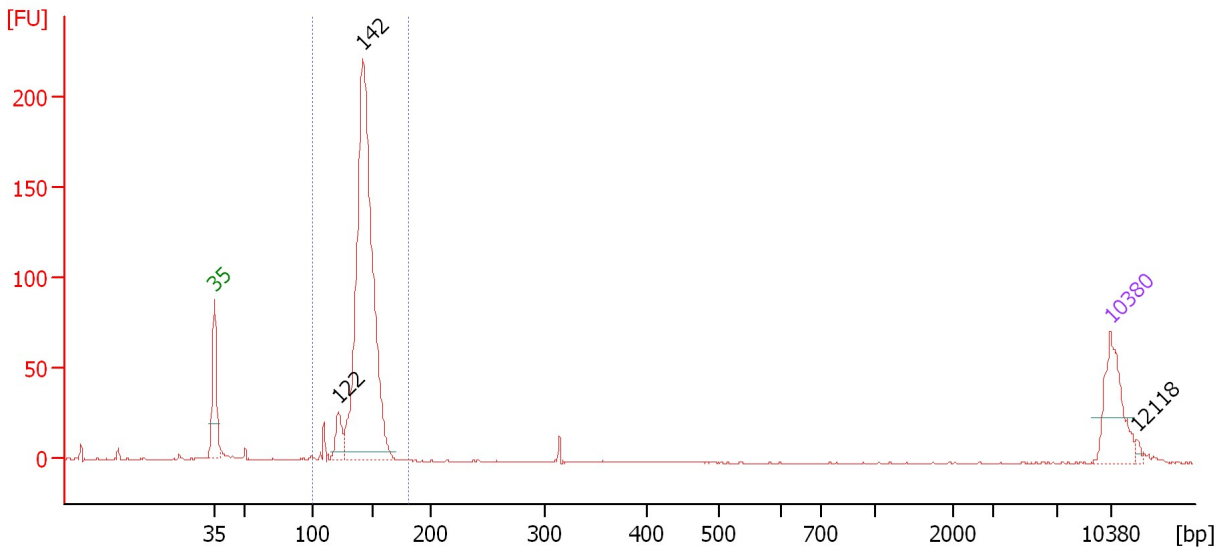
From [bp]	Molarity [pmol/l]	Average Size [bp]	Conc. [pg/μl]	To [bp]	Corr. Area	% of Total	Size distribution in CV [%]	Color
17	396,376.6	282	34,302.47	1,000	2,542.6	96	61.4	

Assay Class: High Sensitivity DNA Assay
 Data Path: C:\...ents and Settings\Bioanalyzer\2012-03-20\2012-03-20_001.xad

Created: 3/20/2012 11:16:11 AM
 Modified: 3/20/2012 12:02:36 PM

Electropherogram Summary Continued ...

UCDJP-12, 1/3



Overall Results for sample 2 : UCDJP-12, 1/3

Number of peaks found: 3 Corr. Area 1: 669.9
 Noise: 0.2

Peak table for sample 2 : UCDJP-12, 1/3

Peak	Size [bp]	Conc. [pg/μl]	Molarity [pmol/l]	Observations
1	35	125.00	5,411.3	Lower Marker
2	122	46.86	584.3	
3	142	902.46	9,598.7	
4	10,380	75.00	10.9	Upper Marker
5	12,118	0.00	0.0	

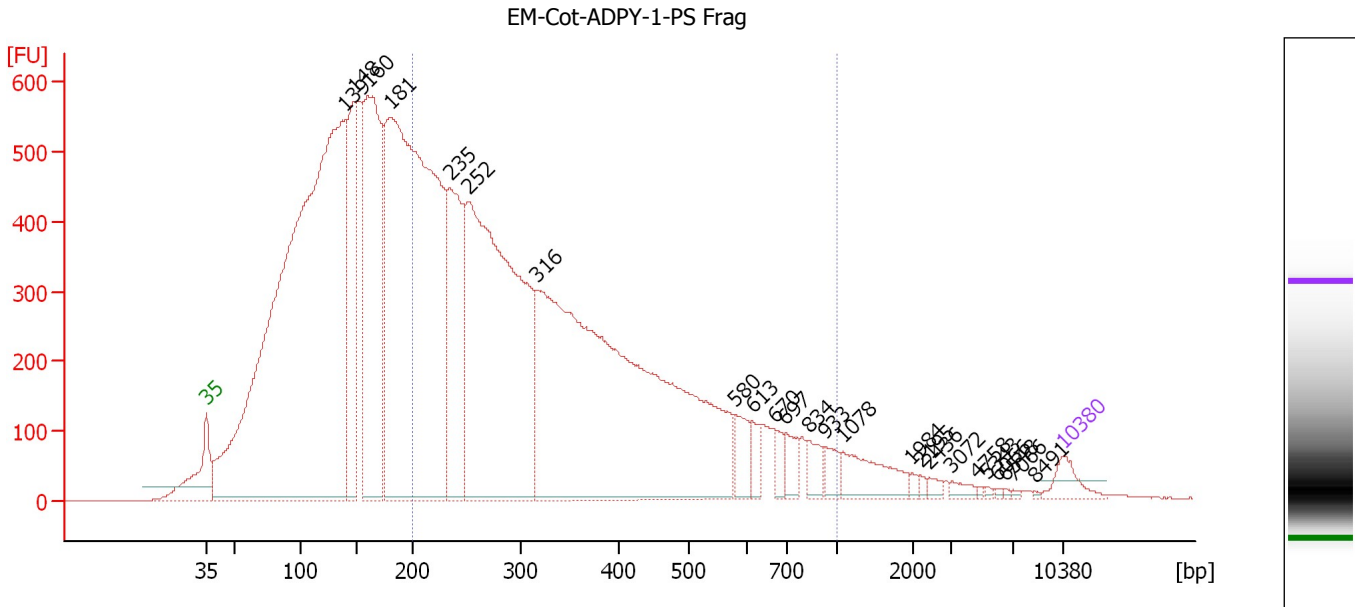
Region table for sample 2 : UCDJP-12, 1/3

From [bp]	Molarity [pmol/l]	Average Size [bp]	Conc. [pg/μl]	To [bp]	Corr. Area	% of Total	Size distribution in CV [%]	Color
99	10,163.9	143	956.11	181	669.9	95	6.6	Blue

Assay Class: High Sensitivity DNA Assay
 Data Path: C:\...ents and Settings\Bioanalyzer\2012-03-20\2012-03-20_001.xad

Created: 3/20/2012 11:16:11 AM
 Modified: 3/20/2012 12:02:36 PM

Electropherogram Summary Continued ...



Overall Results for sample 3 : EM-Cot-ADPY-1-PS Frag

Number of peaks found: 24 Corr. Area 1: 12,095.5
 Noise: 0.5

Peak table for sample 3 : EM-Cot-ADPY-1-PS Frag

Peak	Size [bp]	Conc. [pg/μl]	Molarity [pmol/l]	Observations
1	35	125.00	5,411.3	Lower Marker
2	139	7,676.28	83,578.0	
3	148	1,055.09	10,821.7	
4	160	2,137.67	20,219.7	
5	181	5,170.27	43,207.0	
6	235	1,083.66	6,999.5	
7	252	3,371.82	20,265.8	
8	316	4,618.21	22,167.5	
9	580	144.18	376.3	
10	613	82.95	205.1	
11	670	73.87	167.0	
12	697	101.51	220.6	
13	834	94.06	170.8	
14	933	77.32	125.5	
15	1,078	219.01	307.9	
16	1,984	16.84	12.9	
17	2,195	11.55	8.0	
18	2,436	23.66	14.7	
19	3,072	27.79	13.7	
20	4,758	5.96	1.9	
21	5,343	7.67	2.2	
22	6,066	5.76	1.4	
23	6,548	4.59	1.1	
24	7,066	6.76	1.4	
25	8,491	3.78	0.7	
26	10,380	75.00	10.9	Upper Marker


Assay Class: High Sensitivity DNA Assay
Data Path: C:\...ents and Settings\Bioanalyzer\2012-03-20\2012-03-20_001.xad

Created: 3/20/2012 11:16:11 AM
Modified: 3/20/2012 12:02:36 PM

Electropherogram Summary Continued ...

... Region table for sample 3 :

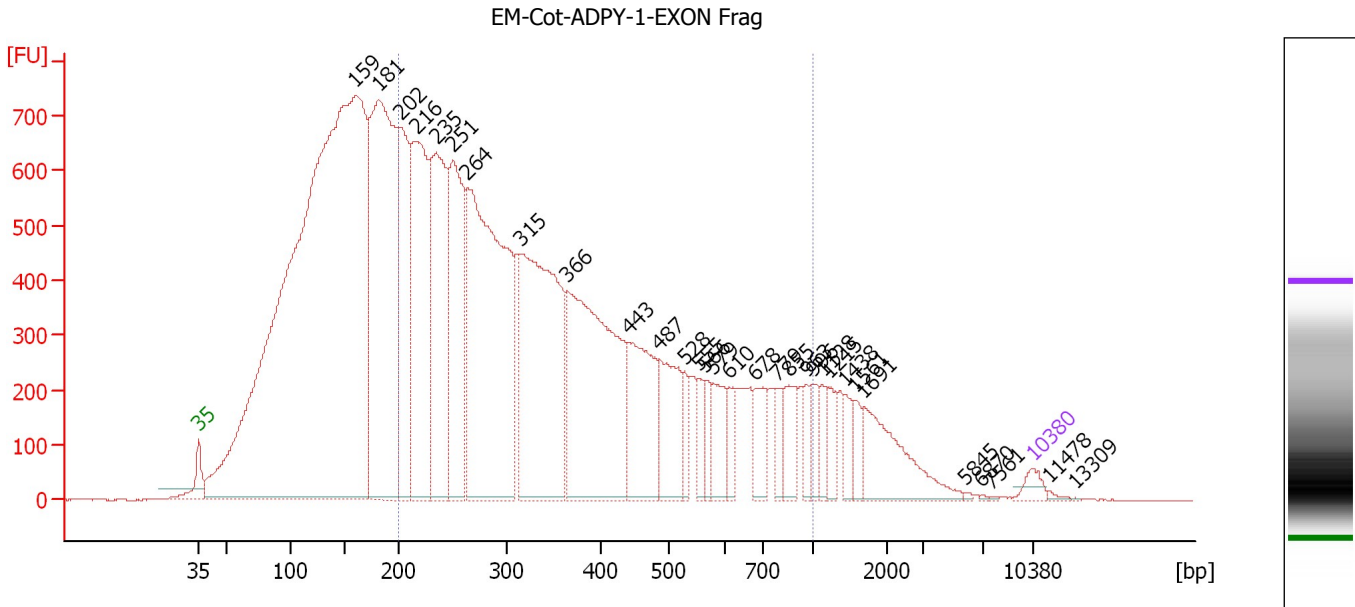
EM-Cot-ADPY-1-PS Frag

From [bp]	Molarity [pmol/l]	Average Size [bp]	Conc. [pg/μl]	To [bp]	Corr. Area	% of Total	Size distribution in CV [%]	Co lor
200	57,334.6	361	11,347.59	1,000	12,095.5	48	42.5	

Assay Class: High Sensitivity DNA Assay
 Data Path: C:\...ents and Settings\Bioanalyzer\2012-03-20\2012-03-20_001.xad

Created: 3/20/2012 11:16:11 AM
 Modified: 3/20/2012 12:02:36 PM

Electropherogram Summary Continued ...



Overall Results for sample 4 : EM-Cot-ADPY-1-EXON Frag

Number of peaks found: 31 Corr. Area 1: 18,358.2
 Noise: 0.5

Peak table for sample 4 : EM-Cot-ADPY-1-EXON Frag

Peak	Size [bp]	Conc. [pg/µl]	Molarity [pmol/l]	Observations
1	35	125.00	5,411.3	Lower Marker
2	159	16,319.87	155,270.3	
3	181	4,908.49	41,099.3	
4	202	1,598.35	11,977.4	
5	216	2,476.07	17,393.5	
6	235	2,269.53	14,621.0	
7	251	1,916.31	11,582.2	
8	264	4,368.77	25,103.2	
9	315	3,139.27	15,106.6	
10	366	2,893.61	11,992.2	
11	443	1,079.14	3,694.3	
12	487	709.87	2,209.5	
13	528	201.21	577.3	
14	555	184.10	502.6	
15	566	165.28	442.3	
16	579	349.15	913.4	
17	610	194.80	483.5	
18	678	286.49	640.2	
19	779	175.24	340.8	
20	855	296.74	526.0	
21	963	141.53	222.7	
22	996	169.66	258.1	
23	1,128	143.92	193.3	
24	1,215	164.74	205.5	
25	1,438	138.91	146.3	
26	1,561	128.26	124.5	

Assay Class: High Sensitivity DNA Assay
 Data Path: C:\...ents and Settings\Bioanalyzer\2012-03-20\2012-03-20_001.xad


Created: 3/20/2012 11:16:11 AM
 Modified: 3/20/2012 12:02:36 PM

Electropherogram Summary Continued ...

... Peak table for sample 4 : EM-Cot-ADPY-1-EXON Frag

Peak	Size [bp]	Conc. [pg/μl]	Molarity [pmol/l]	Observations
27	1,691	633.45	567.5	
28	5,845	9.29	2.4	
29	6,870	5.42	1.2	
30	7,561	5.45	1.1	
31	10,380	75.00	10.9	Upper Marker
32	11,478	0.00	0.0	
33	13,309	0.00	0.0	

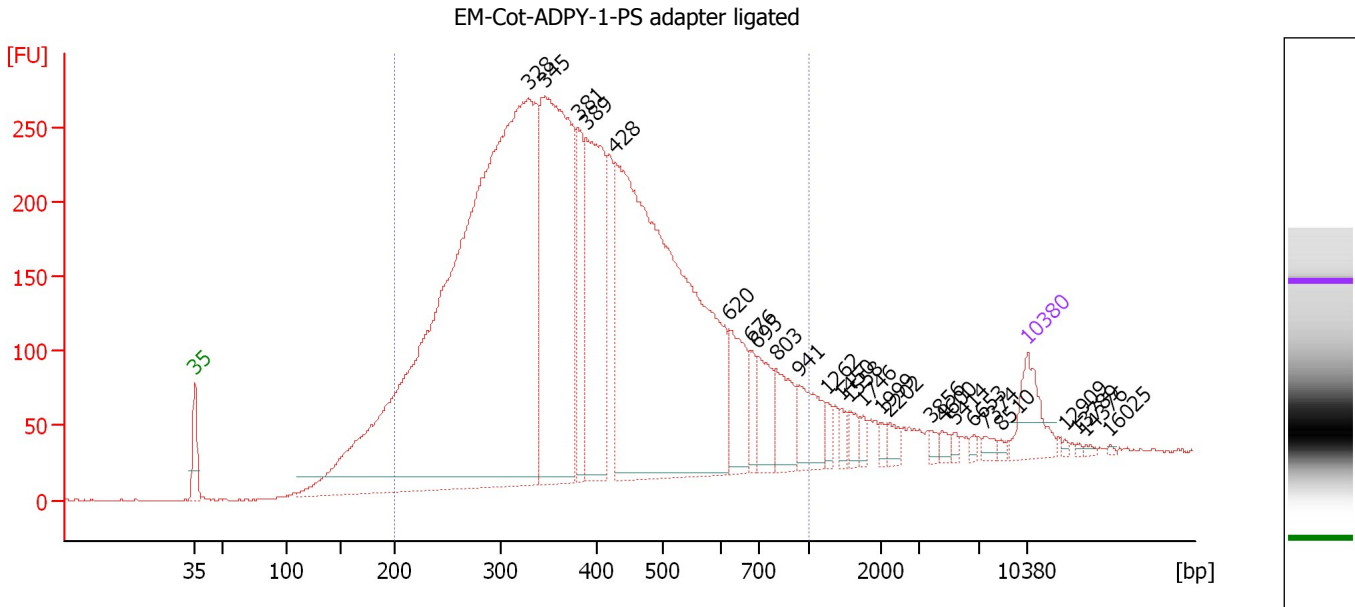
Region table for sample 4 : EM-Cot-ADPY-1-EXON Frag

From [bp]	Molarity [pmol/l]	Average Size [bp]	Conc. [pg/μl]	To [bp]	Corr. Area	% of Total	Size distribution in CV [%]	Color
200	113,933.0	385	23,278.39	1,000	18,358.2	53	45.3	

Assay Class: High Sensitivity DNA Assay
 Data Path: C:\...ents and Settings\Bioanalyzer\2012-03-20\2012-03-20_001.xad

Created: 3/20/2012 11:16:11 AM
 Modified: 3/20/2012 12:02:36 PM

Electropherogram Summary Continued ...



Overall Results for sample 5 : EM-Cot-ADPY-1-PS adapter ligated

Number of peaks found: 26 Corr. Area 1: 7,670.9
 Noise: 0.5

Peak table for sample 5 : EM-Cot-ADPY-1-PS adapter ligated

Peak	Size [bp]	Conc. [pg/μl]	Molarity [pmol/l]	Observations
1	35	125.00	5,411.3	Lower Marker
2	328	2,981.08	13,759.1	
3	345	975.37	4,281.0	
4	381	179.82	715.5	
5	389	453.27	1,764.4	
6	428	1,543.14	5,457.9	
7	620	136.77	334.0	
8	676	41.00	91.9	
9	695	91.94	200.4	
10	803	95.20	179.5	
11	941	94.38	151.9	
12	1,262	17.74	21.3	
13	1,450	15.31	16.0	
14	1,558	22.35	21.7	
15	1,746	13.29	11.5	
16	1,999	10.94	8.3	
17	2,202	17.94	12.3	
18	3,856	8.93	3.5	
19	4,600	11.21	3.7	
20	5,414	7.88	2.2	
21	6,653	6.57	1.5	
22	7,374	12.01	2.5	
23	8,510	5.71	1.0	
24	10,380	75.00	10.9	Upper Marker
25	12,909	0.00	0.0	
26	13,789	0.00	0.0	


Assay Class: High Sensitivity DNA Assay
Data Path: C:\...ents and Settings\Bioanalyzer\2012-03-20\2012-03-20_001.xad

Created: 3/20/2012 11:16:11 AM
Modified: 3/20/2012 12:02:36 PM

Electropherogram Summary Continued ...**... Peak table for sample 5 : EM-Cot-ADPY-1-PS adapter ligated**

Peak	Size [bp]	Conc. [pg/μl]	Molarity [pmol/l]	Observations
27	14,376	0.00	0.0	
28	16,025	0.00	0.0	

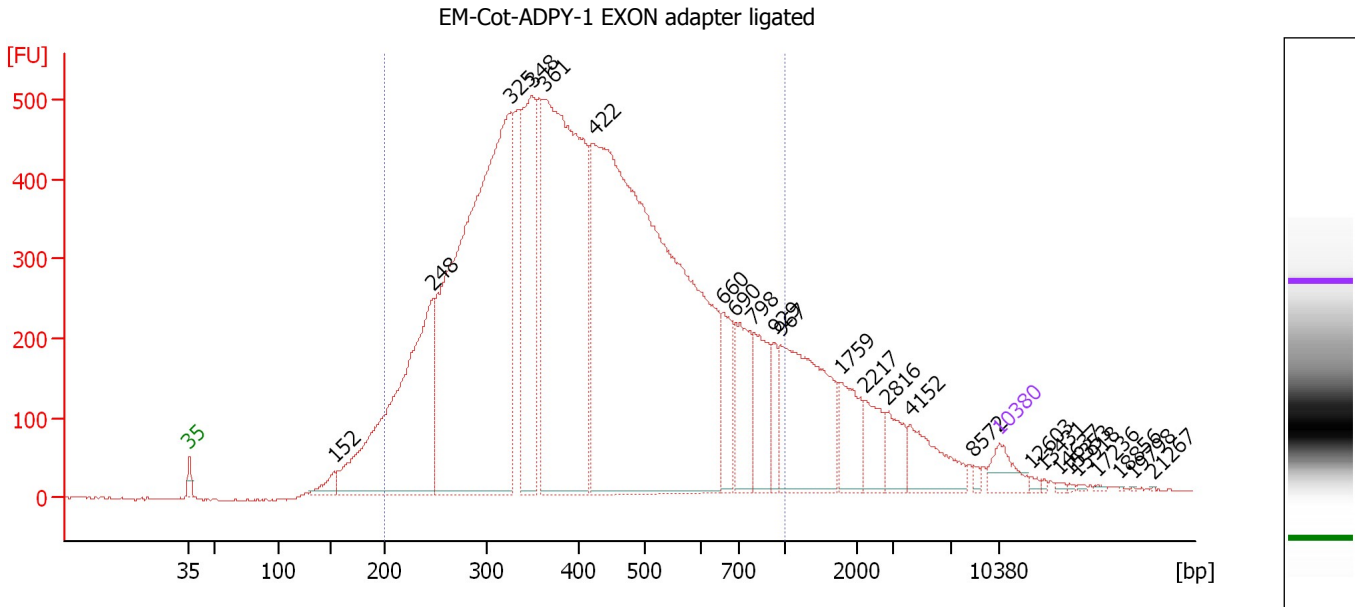
Region table for sample 5 : EM-Cot-ADPY-1-PS adapter ligated

From [bp]	Molarity [pmol/l]	Average Size [bp]	Conc. [pg/μl]	To [bp]	Corr. Area	% of Total	Size distribution in CV [%]	Color
200	28,088.4	409	6,504.27	1,000	7,670.9	90	35.9	

Assay Class: High Sensitivity DNA Assay
 Data Path: C:\...ents and Settings\Bioanalyzer\2012-03-20\2012-03-20_001.xad

Created: 3/20/2012 11:16:11 AM
 Modified: 3/20/2012 12:02:36 PM

Electropherogram Summary Continued ...



Overall Results for sample 6 : EM-Cot-ADPY-1 EXON adapter ligated

Number of peaks found: 25 Corr. Area 1: 15,496.6
 Noise: 1.4

Peak table for sample 6 : EM-Cot-ADPY-1 EXON adapter ligated

Peak	Size [bp]	Conc. [pg/μl]	Molarity [pmol/l]	Observations
1	35	125.00	5,411.3	Lower Marker
2	152	74.09	737.2	
3	248	1,554.62	9,505.0	
4	325	3,280.62	15,281.9	
5	348	847.90	3,686.8	
6	361	2,291.66	9,612.3	
7	422	4,128.04	14,819.8	
8	660	207.44	476.1	
9	690	297.10	652.4	
10	798	247.15	469.4	
11	929	86.72	141.4	
12	967	629.87	987.3	
13	1,759	171.19	147.5	
14	2,217	119.59	81.7	
15	2,816	102.09	54.9	
16	4,152	174.72	63.8	
17	8,572	13.21	2.3	
18	10,380	75.00	10.9	Upper Marker
19	12,603	0.00	0.0	
20	13,431	0.00	0.0	
21	14,637	0.00	0.0	
22	15,353	0.00	0.0	
23	15,918	0.00	0.0	
24	17,236	0.00	0.0	
25	18,856	0.00	0.0	
26	19,798	0.00	0.0	


Assay Class: High Sensitivity DNA Assay
Data Path: C:\...ents and Settings\Bioanalyzer\2012-03-20\2012-03-20_001.xad

Created: 3/20/2012 11:16:11 AM
Modified: 3/20/2012 12:02:36 PM

Electropherogram Summary Continued ...**... Peak table for sample 6 : EM-Cot-ADPY-1 EXON adapter ligated**

Peak	Size [bp]	Conc. [pg/ μ l]	Molarity [pmol/l]	Observations
27	21,267	0.00	0.0	

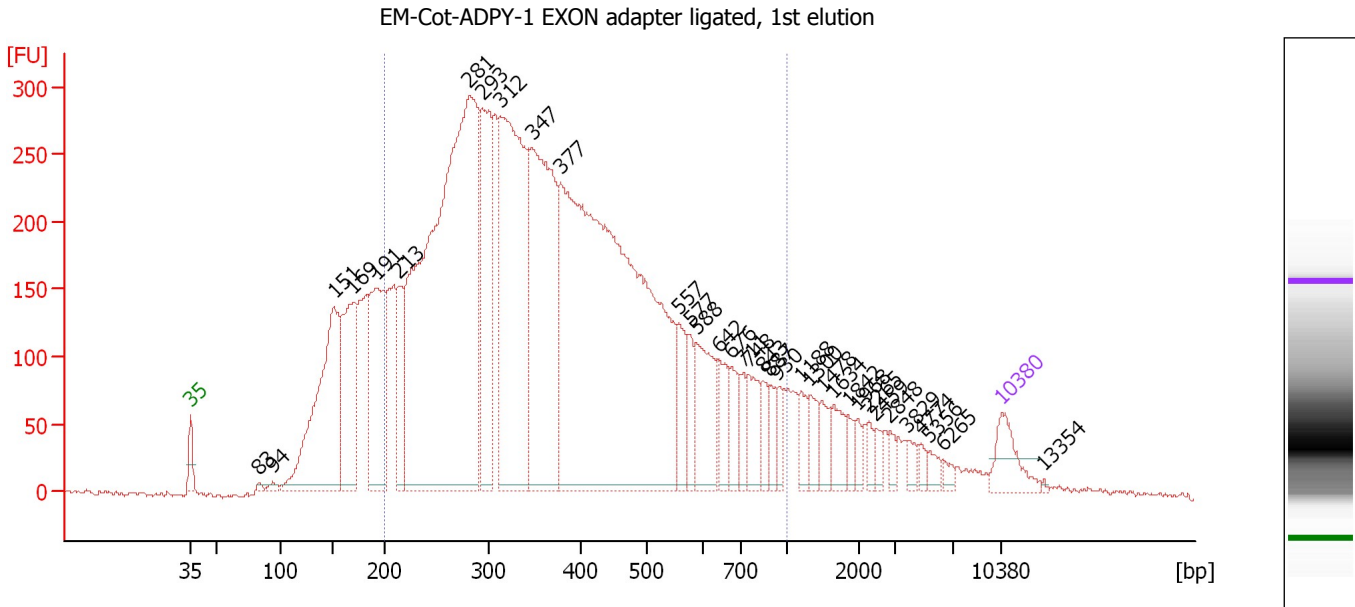
Region table for sample 6 : EM-Cot-ADPY-1 EXON adapter ligated

From [bp]	Molarity [pmol/l]	Average Size [bp]	Conc. [pg/ μ l]	To [bp]	Corr. Area	% of Total	Size distribution in CV [%]	Color
200	55,109.8	433	13,273.13	1,000	15,496.6	87	37.4	

Assay Class: High Sensitivity DNA Assay
 Data Path: C:\...ents and Settings\Bioanalyzer\2012-03-20\2012-03-20_001.xad

Created: 3/20/2012 11:16:11 AM
 Modified: 3/20/2012 12:02:36 PM

Electropherogram Summary Continued ...



Overall Results for sample 7 : EM-Cot-ADPY-1 EXON adapter ligated, 1st elution

Number of peaks found: 35 Corr. Area 1: 8,778.5
 Noise: 2.1

Peak table for sample 7 : EM-Cot-ADPY-1 EXON adapter ligated, 1st elution

Peak	Size [bp]	Conc. [pg/μl]	Molarity [pmol/l]	Observations
1	35	125.00	5,411.3	Lower Marker
2	83	9.05	165.3	
3	94	12.75	204.6	
4	151	762.86	7,672.0	
5	169	423.28	3,785.4	
6	191	474.97	3,773.2	
7	213	178.29	1,266.9	
8	281	2,375.43	12,804.9	
9	293	479.26	2,479.2	
10	312	1,057.49	5,130.8	
11	347	902.46	3,939.9	
12	377	2,390.87	9,603.7	
13	557	123.66	336.5	
14	577	69.79	183.3	
15	588	193.52	498.4	
16	642	91.43	215.7	
17	676	78.55	176.0	
18	711	51.64	110.0	
19	748	97.67	197.8	
20	843	54.37	97.8	
21	887	45.08	77.1	
22	930	43.31	70.5	
23	1,188	48.27	61.5	
24	1,300	52.83	61.6	
25	1,478	45.33	46.5	
26	1,634	59.85	55.5	

Assay Class: High Sensitivity DNA Assay
 Data Path: C:\...ents and Settings\Bioanalyzer\2012-03-20\2012-03-20_001.xad


Created: 3/20/2012 11:16:11 AM
 Modified: 3/20/2012 12:02:36 PM

Electropherogram Summary Continued ...

... Peak table for sample 7 : EM-Cot-ADPY-1 EXON adapter ligated, 1st elution

Peak	Size [bp]	Conc. [pg/μl]	Molarity [pmol/l]	Observations
27	1,842	30.63	25.2	
28	1,968	23.41	18.0	
29	2,265	23.51	15.7	
30	2,459	21.75	13.4	
31	2,848	19.90	10.6	
32	3,829	23.82	9.4	
33	4,774	17.47	5.5	
34	5,356	21.95	6.2	
35	6,265	14.64	3.5	
36	10,380	75.00	10.9	Upper Marker
37	13,354	0.00	0.0	

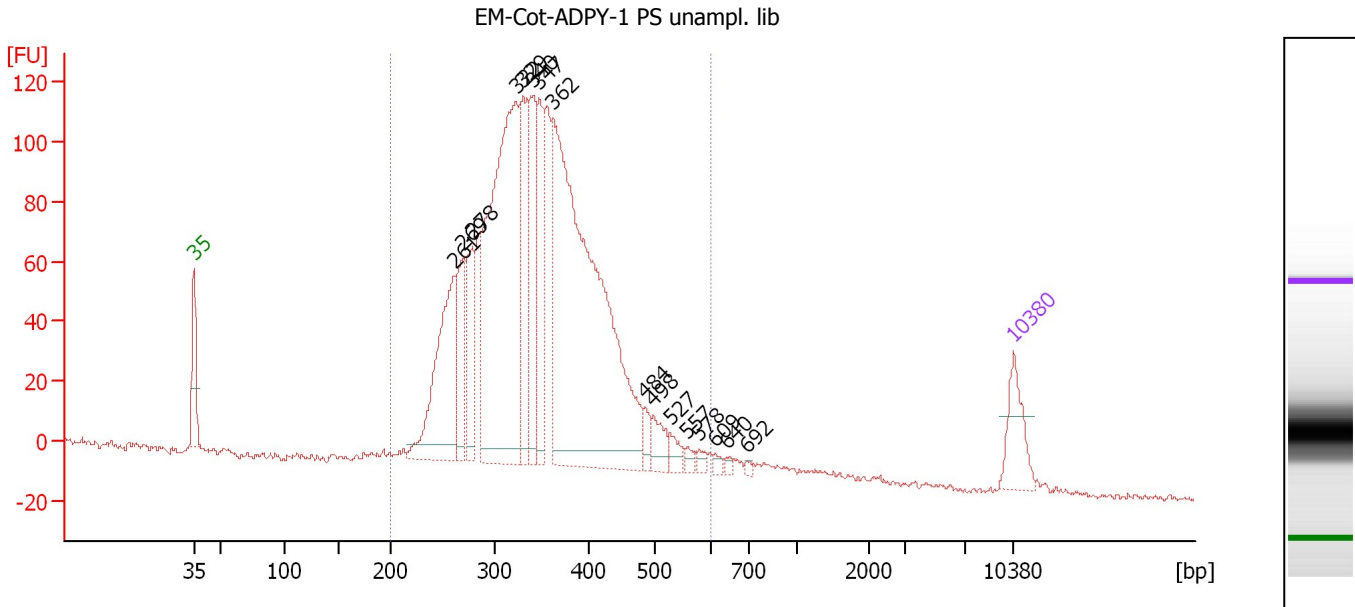
Region table for sample 7 : EM-Cot-ADPY-1 EXON adapter ligated, 1st elution

From [bp]	Molarity [pmol/l]	Average Size [bp]	Conc. [pg/μl]	To [bp]	Corr. Area	% of Total	Size distribution in CV [%]	Color
200	39,702.1	398	8,748.97	1,000	8,778.5	78	39.6	

Assay Class: High Sensitivity DNA Assay
 Data Path: C:\...ents and Settings\Bioanalyzer\2012-03-20\2012-03-20_001.xad

Created: 3/20/2012 11:16:11 AM
 Modified: 3/20/2012 12:02:36 PM

Electropherogram Summary Continued ...



Overall Results for sample 8 : EM-Cot-ADPY-1 PS unampl. lib

Number of peaks found: 16 Corr. Area 1: 2,177.6
 Noise: 1.1

Peak table for sample 8 : EM-Cot-ADPY-1 PS unampl. lib

Peak	Size [bp]	Conc. [pg/μl]	Molarity [pmol/l]	Observations
1	35	125.00	5,411.3	Lower Marker
2	261	382.31	2,219.5	
3	269	164.63	926.8	
4	278	171.59	936.0	
5	322	954.43	4,491.4	
6	329	279.37	1,284.9	
7	340	213.59	952.5	
8	347	207.10	905.2	
9	362	1,278.04	5,347.5	
10	484	28.12	88.0	
11	498	51.10	155.5	
12	527	27.42	78.9	
13	557	14.49	39.4	
14	578	13.01	34.1	
15	609	10.36	25.8	
16	640	8.16	19.3	
17	692	7.26	15.9	
18	10,380	75.00	10.9	Upper Marker

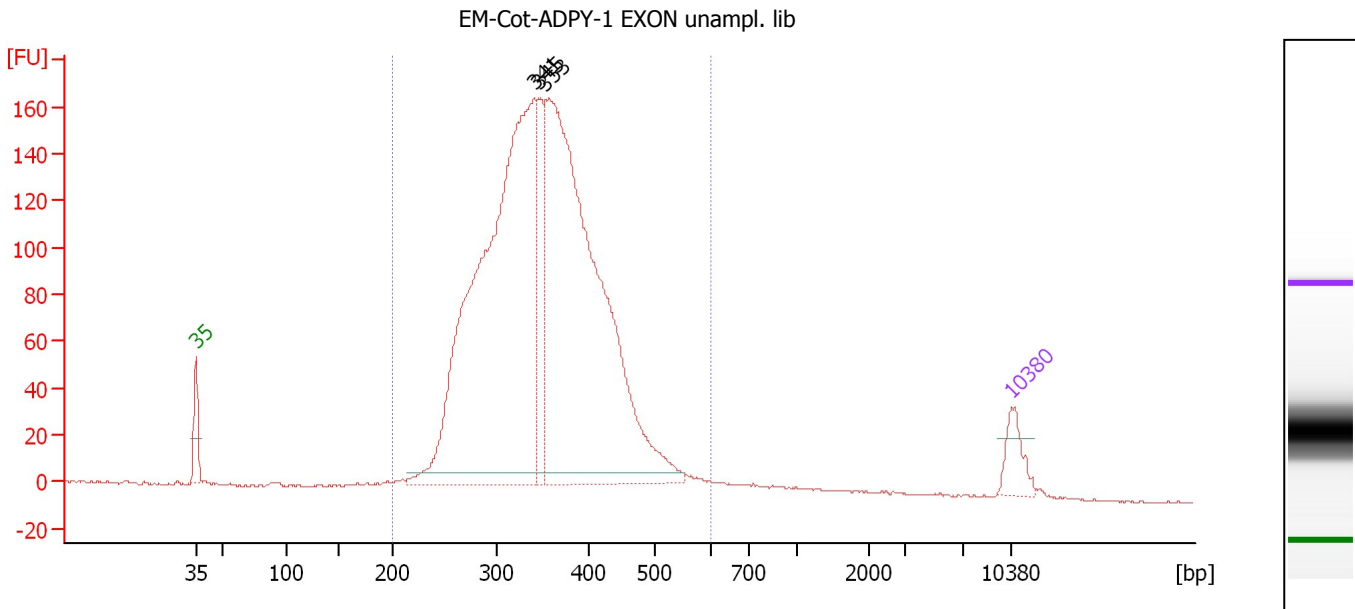
Region table for sample 8 : EM-Cot-ADPY-1 PS unampl. lib

From [bp]	Molarity [pmol/l]	Average Size [bp]	Conc. [pg/μl]	To [bp]	Corr. Area	% of Total	Size distribution in CV [%]	Color
200	18,896.3	349	4,139.79	600	2,177.6	97	19.3	Blue

Assay Class: High Sensitivity DNA Assay
 Data Path: C:\...ents and Settings\Bioanalyzer\2012-03-20\2012-03-20_001.xad

Created: 3/20/2012 11:16:11 AM
 Modified: 3/20/2012 12:02:36 PM

Electropherogram Summary Continued ...



Overall Results for sample 9 : EM-Cot-ADPY-1 EXON unampl. lib

Number of peaks found: 3 Corr. Area 1: 2,795.5
 Noise: 0.4

Peak table for sample 9 : EM-Cot-ADPY-1 EXON unampl. lib

Peak	Size [bp]	Conc. [pg/μl]	Molarity [pmol/l]	Observations
1	35	125.00	5,411.3	Lower Marker
2	341	2,553.74	11,352.2	
3	345	275.65	1,209.0	
4	353	2,431.13	10,436.6	
5	10,380	75.00	10.9	Upper Marker

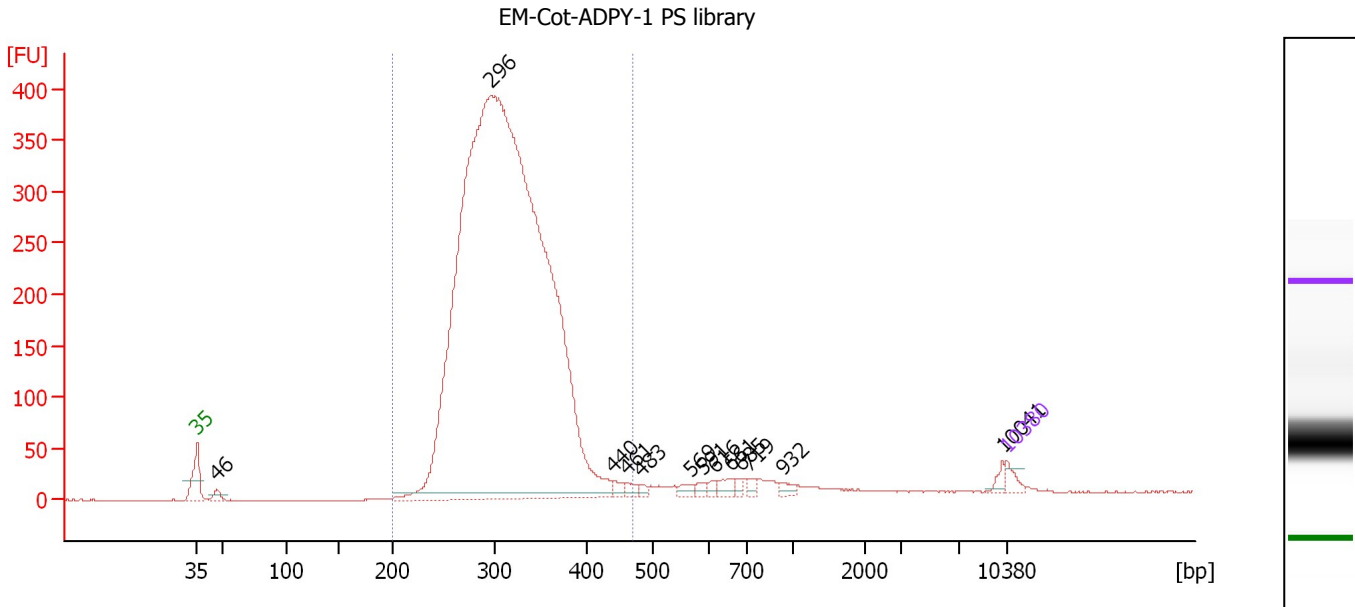
Region table for sample 9 : EM-Cot-ADPY-1 EXON unampl. lib

From [bp]	Molarity [pmol/l]	Average Size [bp]	Conc. [pg/μl]	To [bp]	Corr. Area	% of Total	Size distribution in CV [%]	Color
200	24,835.9	353	5,549.68	601	2,795.5	97	17.8	Blue

Assay Class: High Sensitivity DNA Assay
 Data Path: C:\...ents and Settings\Bioanalyzer\2012-03-20\2012-03-20_001.xad

Created: 3/20/2012 11:16:11 AM
 Modified: 3/20/2012 12:02:36 PM

Electropherogram Summary Continued ...



Overall Results for sample 10 : EM-Cot-ADPY-1 PS library

Number of peaks found: 13 Corr. Area 1: 5,009.5
 Noise: 0.2

Peak table for sample 10 : EM-Cot-ADPY-1 PS library

Peak	Size [bp]	Conc. [pg/μl]	Molarity [pmol/l]	Observations
1	35	125.00	5,411.3	Lower Marker
2	46	93.01	3,045.4	
3	296	20,172.12	103,310.9	
4	440	65.42	225.1	
5	461	66.91	219.7	
6	483	41.98	131.8	
7	569	65.59	174.5	
8	591	48.26	123.6	
9	616	43.32	106.6	
10	661	86.51	198.3	
11	685	46.74	103.3	
12	719	53.77	113.3	
13	932	55.21	89.8	
14	10,041	50.20	7.6	
15	10,380	75.00	10.9	Upper Marker

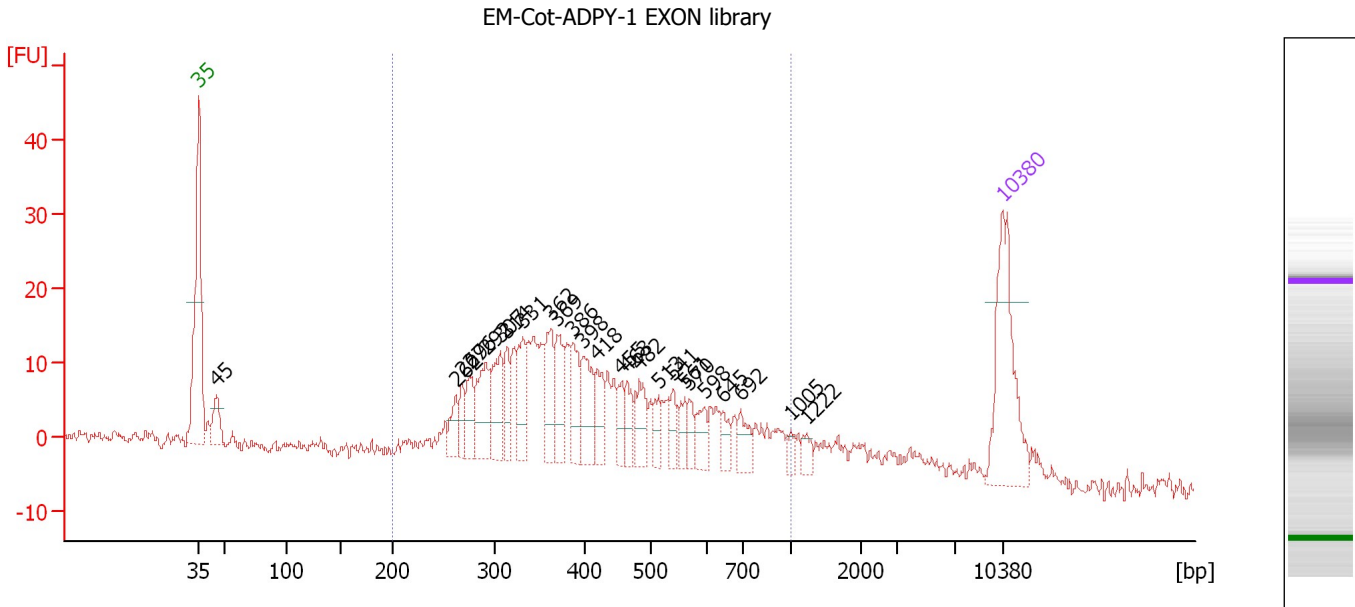
Region table for sample 10 : EM-Cot-ADPY-1 PS library

From [bp]	Molarity [pmol/l]	Average Size [bp]	Conc. [pg/μl]	To [bp]	Corr. Area	% of Total	Size distribution in CV [%]	Color
200	95,305.4	313	19,333.77	469	5,009.5	94	12.8	Blue

Assay Class: High Sensitivity DNA Assay
 Data Path: C:\...ents and Settings\Bioanalyzer\2012-03-20\2012-03-20_001.xad

Created: 3/20/2012 11:16:11 AM
 Modified: 3/20/2012 12:02:36 PM

Electropherogram Summary Continued ...



Overall Results for sample 11 : EM-Cot-ADPY-1 EXON library

Number of peaks found: 25 Corr. Area 1: 404.1
 Noise: 1.0

Peak table for sample 11 : EM-Cot-ADPY-1 EXON library

Peak	Size [bp]	Conc. [pg/μl]	Molarity [pmol/l]	Observations
1	35	125.00	5,411.3	Lower Marker
2	45	29.17	972.5	
3	262	20.37	117.7	
4	269	17.57	99.0	
5	276	25.95	142.3	
6	292	48.04	249.4	
7	307	45.59	225.3	
8	314	25.43	122.8	
9	331	37.19	170.1	
10	362	39.26	164.5	
11	369	35.83	147.3	
12	386	31.61	124.2	
13	398	37.99	144.7	
14	418	24.14	87.4	
15	455	15.16	50.5	
16	463	16.70	54.6	
17	482	26.91	84.6	
18	513	14.67	43.3	
19	541	13.78	38.6	
20	561	14.89	40.2	
21	570	11.27	30.0	
22	598	16.20	41.1	
23	645	10.86	25.5	
24	692	16.08	35.2	
25	1,005	5.65	8.5	
26	1,222	8.11	10.0	


Assay Class: High Sensitivity DNA Assay
Data Path: C:\...ents and Settings\Bioanalyzer\2012-03-20\2012-03-20_001.xad

Created: 3/20/2012 11:16:11 AM
Modified: 3/20/2012 12:02:36 PM

Electropherogram Summary Continued ...**... Peak table for sample 11 : EM-Cot-ADPY-1 EXON library**

Peak	Size [bp]	Conc. [pg/μl]	Molarity [pmol/l]	Observations
27	10,380	75.00	10.9	Upper Marker

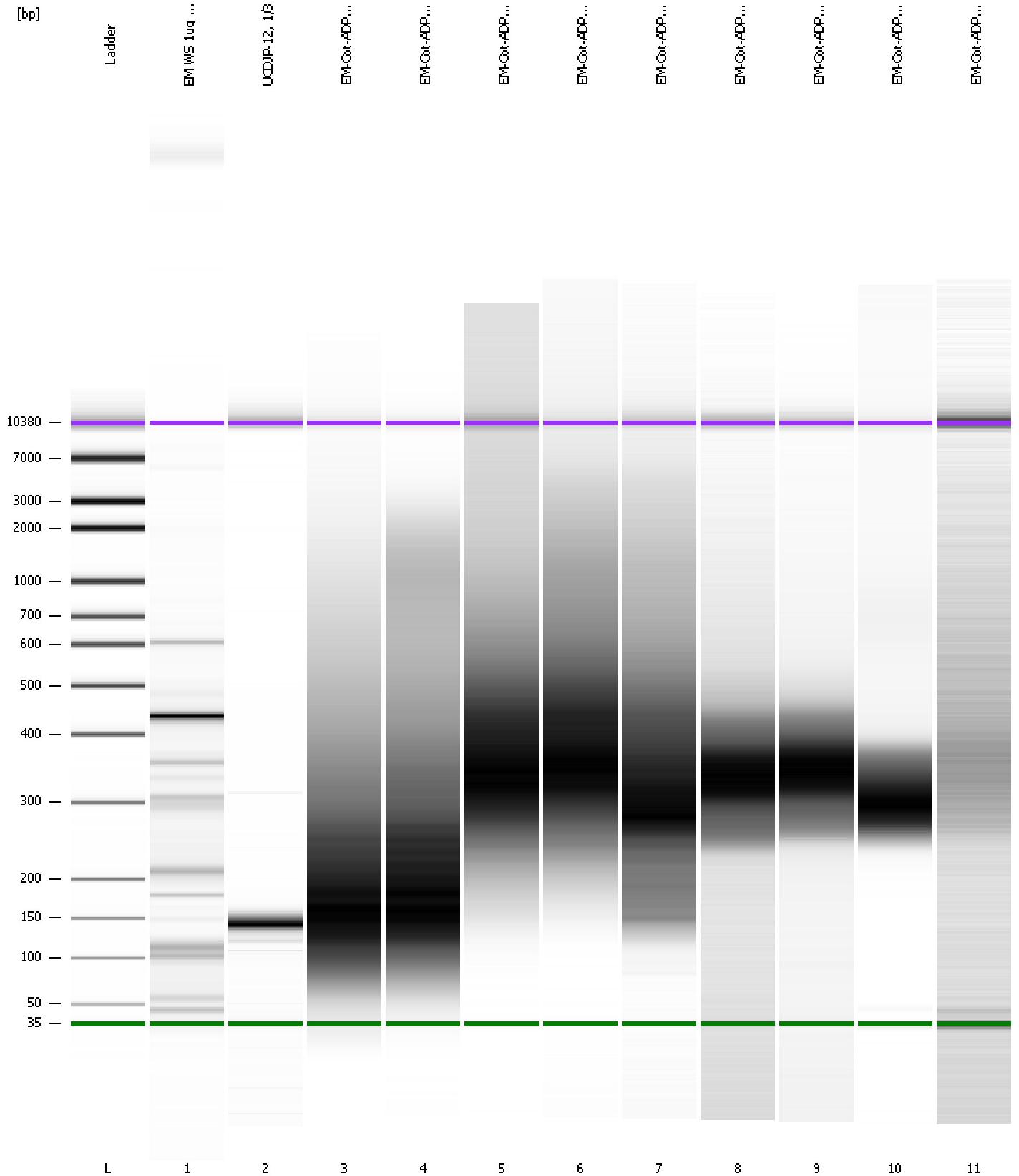
Region table for sample 11 : EM-Cot-ADPY-1 EXON library

From [bp]	Molarity [pmol/l]	Average Size [bp]	Conc. [pg/μl]	To [bp]	Corr. Area	% of Total	Size distribution in CV [%]	Color
200	3,019.4	441	761.26	1,000	404.1	85	35.4	

Assay Class: High Sensitivity DNA Assay
Data Path: C:\...ents and Settings\Bioanalyzer\2012-03-20\2012-03-20_001.xad

Created: 3/20/2012 11:16:11 AM
Modified: 3/20/2012 12:02:36 PM

Gel Image



Assay Class: High Sensitivity DNA Assay
 Data Path: C:\...ents and Settings\Bioanalyzer\2012-03-20\2012-03-20_001.xad

Created: 3/20/2012 11:16:11 AM
 Modified: 3/20/2012 12:02:36 PM

Run Logbook

Description	Number	Source	Category	Sub Category	Time	Time Zone	User	Host
Run ended on port 1 (Number of wells acquired: 12)		Instrument	Run		3/20/2012 11:57:29 AM	(GMT --07:00) Pacific Standard Time	UC Davis	D8XSMGH1
Run started on port 1 (File: C:\Documents and Settings\Bioanalyzer\2012-03-20\2012-03-20_001.xad)		Instrument	Run		3/20/2012 11:16:17 AM	(GMT --07:00) Pacific Standard Time	UC Davis	D8XSMGH1
Product Number : G2938B		Instrument	Run		3/20/2012 11:16:17 AM	(GMT --07:00) Pacific Standard Time	UC Davis	D8XSMGH1
Name :		Instrument	Run		3/20/2012 11:16:17 AM	(GMT --07:00) Pacific Standard Time	UC Davis	D8XSMGH1
Vendor : Agilent Technologies		Instrument	Run		3/20/2012 11:16:17 AM	(GMT --07:00) Pacific Standard Time	UC Davis	D8XSMGH1
Serial# : DE13701086		Instrument	Run		3/20/2012 11:16:17 AM	(GMT --07:00) Pacific Standard Time	UC Davis	D8XSMGH1
Firmware : C.01.069		Instrument	Run		3/20/2012 11:16:17 AM	(GMT --07:00) Pacific Standard Time	UC Davis	D8XSMGH1
Cartridge : Electrode		Instrument	Run		3/20/2012 11:16:17 AM	(GMT --07:00) Pacific Standard Time	UC Davis	D8XSMGH1