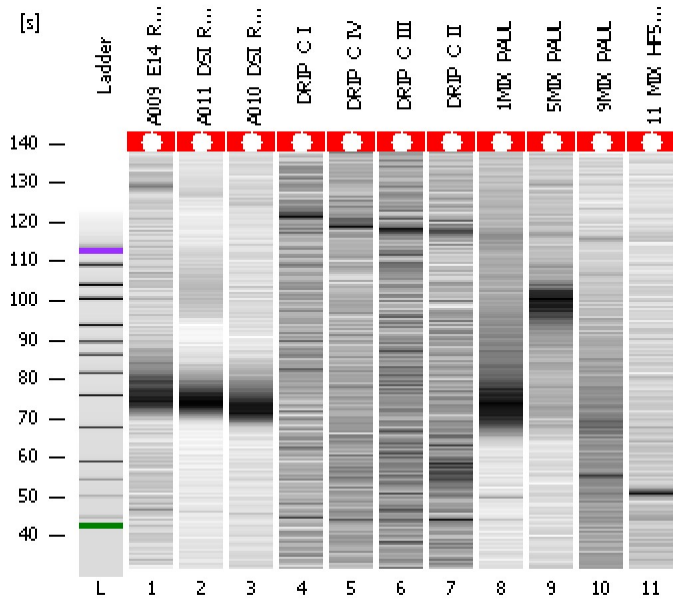


Assay Class: High Sensitivity DNA Assay
Data Path: C:\...ents and Settings\Bioanalyzer\2012-03-20\2012-03-20_002.xad

Created: 3/20/2012 3:21:07 PM
Modified: 3/20/2012 4:02:29 PM

Electrophoresis File Run Summary



Instrument Information:

Instrument Name: DE13701086 Firmware: C.01.069
Serial#: DE13701086 Type: G2938B

Assay Information:

Assay Origin Path: C:\Program Files\Agilent\2100 bioanalyzer\2100 expert\assays\dsDNA\High Sensitivity DNA.xsy
Assay Class: High Sensitivity DNA Assay
Version: 1.03
Assay Comments: Copyright © 2003-2010 Agilent Technologies

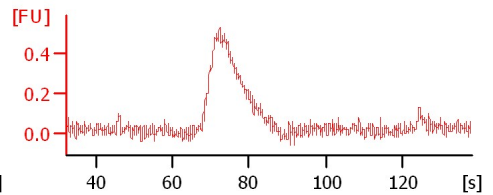
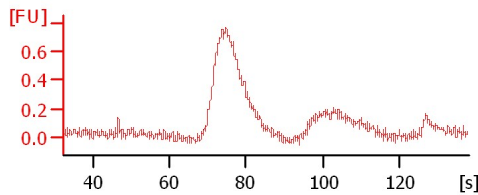
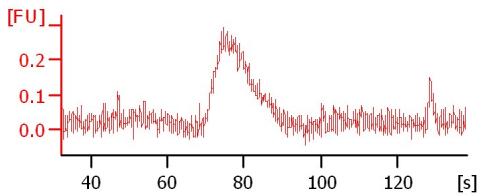
Chip Information:

Chip Lot #:
Reagent Kit Lot #:
Chip Comments:

A009_E14_RNA_LIB

A011_DSI_RNA_LIB2

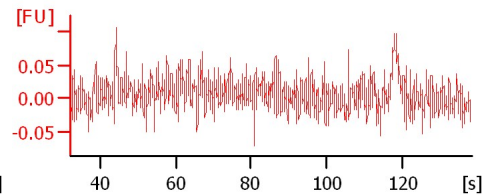
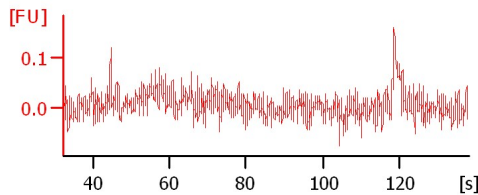
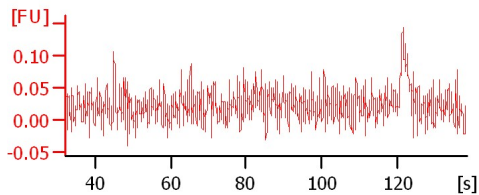
A010_DSI_RNA_LIB1



DRIP_C_I

DRIP_C_IV

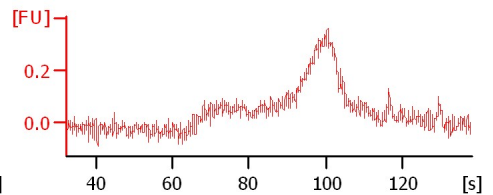
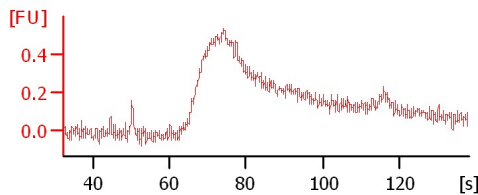
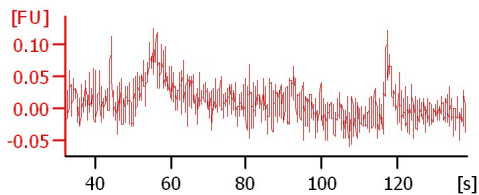
DRIP_C_III



DRIP_C_II

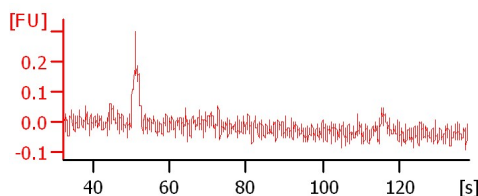
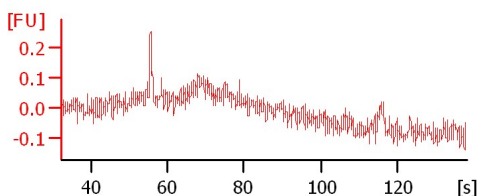
1MIX_PAUL

5MIX_PAUL



9MIX_PAUL

11_MIX_HF57_INPUT



Assay Class: High Sensitivity DNA Assay
 Data Path: C:\...ents and Settings\Bioanalyzer\2012-03-20\2012-03-20_002.xad

Created: 3/20/2012 3:21:07 PM
 Modified: 3/20/2012 4:02:29 PM

Electrophoresis File Run Summary (Chip Summary)

Sample Name	Sample Comment	Rest. Digest	Status	Observation	Result Label	Result Color
A009_E14_RNA_LIB		<input type="checkbox"/>	✓			
A011_DSI_RNA_LIB2		<input type="checkbox"/>	✓			
A010_DSI_RNA_LIB1		<input type="checkbox"/>	✓			
DRIP_C_I		<input type="checkbox"/>	✓			
DRIP_C_IV		<input type="checkbox"/>	✓			
DRIP_C_III		<input type="checkbox"/>	✓			
DRIP_C_II		<input type="checkbox"/>	✓			
1MIX_PAUL		<input type="checkbox"/>	✓			
5MIX_PAUL		<input type="checkbox"/>	✓			
9MIX_PAUL		<input type="checkbox"/>	✓			
11_MIX_HF57_INPUT		<input type="checkbox"/>	✓			
Ladder		<input type="checkbox"/>	✓			

Chip Lot #

Reagent Kit Lot #

Chip Comments :

Assay Class: High Sensitivity DNA Assay
Data Path: C:\...ents and Settings\Bioanalyzer\2012-03-20\2012-03-20_002.xad

Created: 3/20/2012 3:21:07 PM
Modified: 3/20/2012 4:02:29 PM

Electrophoresis Assay Details

General Analysis Settings

Number of Available Sample and Ladder Wells (Max.) : 12
Minimum Visible Range [s] : 32
Maximum Visible Range [s] : 138
Start Analysis Time Range [s] : 33
End Analysis Time Range [s] : 137.5
Ladder Concentration [pg/μl] : 1950
Uses Standard Area for Ladder Fragments
Lower Marker Concentration [pg/μl] : 125
Upper Marker Concentration [pg/μl] : 75
Used Upper Marker for Quantitation
Standard Curve Fit is Point to Point
Show Data Aligned to Lower and Upper Marker

Integrator Settings

Integration Start Time [s] : 33.05
Integration End Time [s] : 137
Slope Threshold : 0.8
Height Threshold [FU] : 5
Area Threshold : 0.1
Width Threshold [s] : 0.6
Baseline Plateau [s] : 0.5

Filter Settings

Filter Width [s] : 0.5
Polynomial Order : 4

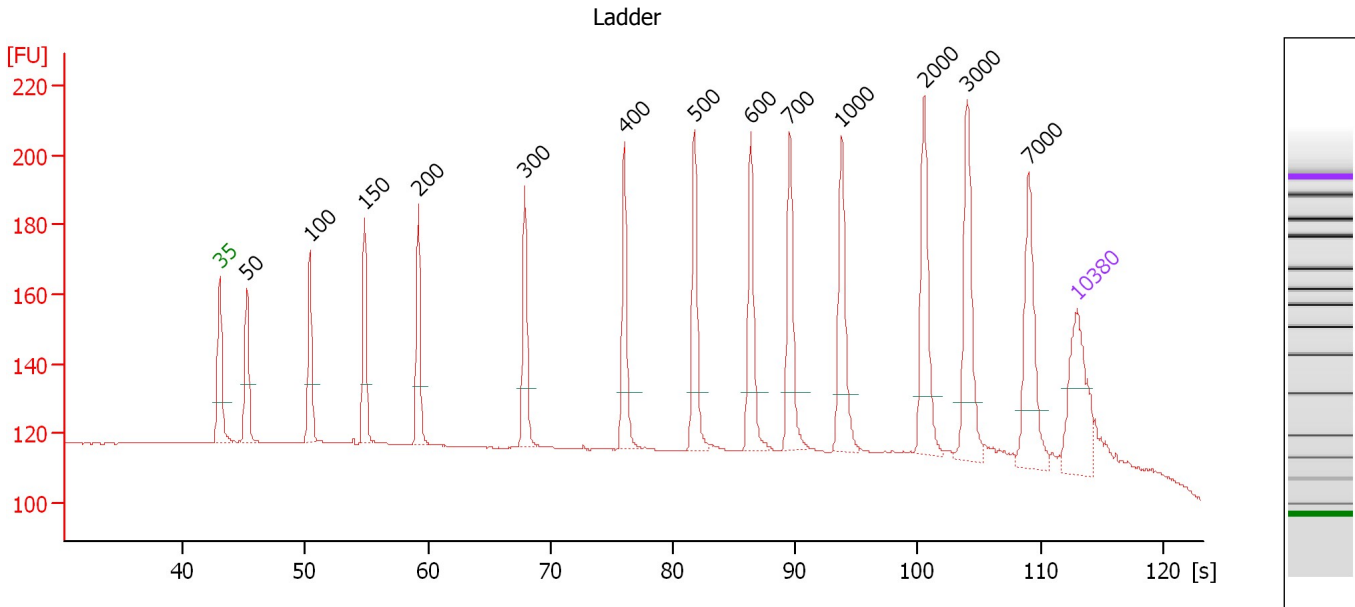
Ladder

Ladder Peak	Size	Area
1	35	160
2	50	210
3	100	208
4	150	221
5	200	242
6	300	270
7	400	305
8	500	306
9	600	336
10	700	321
11	1000	366
12	2000	413
13	3000	411
14	7000	400
15	10380	214

Assay Class: High Sensitivity DNA Assay
 Data Path: C:\...ents and Settings\Bioanalyzer\2012-03-20\2012-03-20_002.xad

Created: 3/20/2012 3:21:07 PM
 Modified: 3/20/2012 4:02:29 PM

Electropherogram Summary



Overall Results for Ladder

Noise: 0.1

Peak table for Ladder

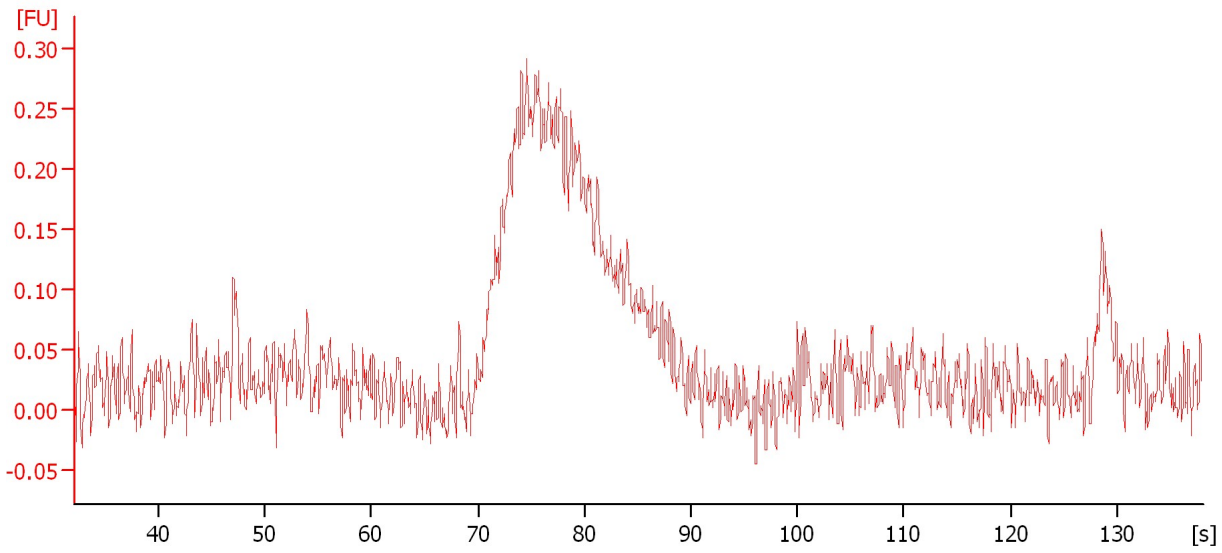
Peak	Size [bp]	Conc. [pg/μl]	Molarity [pmol/l]	Observations
1	35	125.00	5,411.3	Lower Marker
2	50	150.00	4,545.5	Ladder Peak
3	100	150.00	2,272.7	Ladder Peak
4	150	150.00	1,515.2	Ladder Peak
5	200	150.00	1,136.4	Ladder Peak
6	300	150.00	757.6	Ladder Peak
7	400	150.00	568.2	Ladder Peak
8	500	150.00	454.5	Ladder Peak
9	600	150.00	378.8	Ladder Peak
10	700	150.00	324.7	Ladder Peak
11	1,000	150.00	227.3	Ladder Peak
12	2,000	150.00	113.6	Ladder Peak
13	3,000	150.00	75.8	Ladder Peak
14	7,000	150.00	32.5	Ladder Peak
15	10,380	75.00	10.9	Upper Marker

Assay Class: High Sensitivity DNA Assay
Data Path: C:\...ents and Settings\Bioanalyzer\2012-03-20\2012-03-20_002.xad

Created: 3/20/2012 3:21:07 PM
Modified: 3/20/2012 4:02:29 PM

Electropherogram Summary Continued ...

A009_E14_RNA_LIB



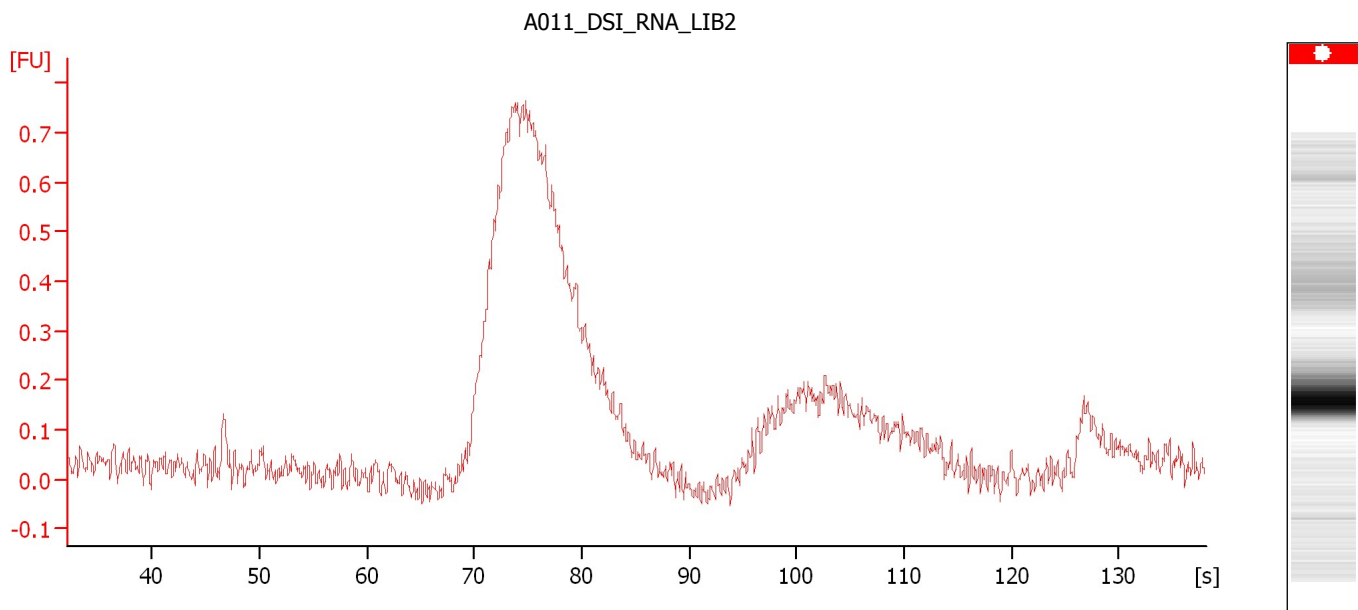
Overall Results for sample 1 : A009 E14 RNA LIB

Noise: 0.0

Assay Class: High Sensitivity DNA Assay
Data Path: C:\...ents and Settings\Bioanalyzer\2012-03-20\2012-03-20_002.xad

Created: 3/20/2012 3:21:07 PM
Modified: 3/20/2012 4:02:29 PM

Electropherogram Summary Continued ...



Setpoint Deviations for sample 2 : A011 DSI RNA LIB2

Height Threshold [FU] : 0

Overall Results for sample 2 : A011 DSI RNA LIB2

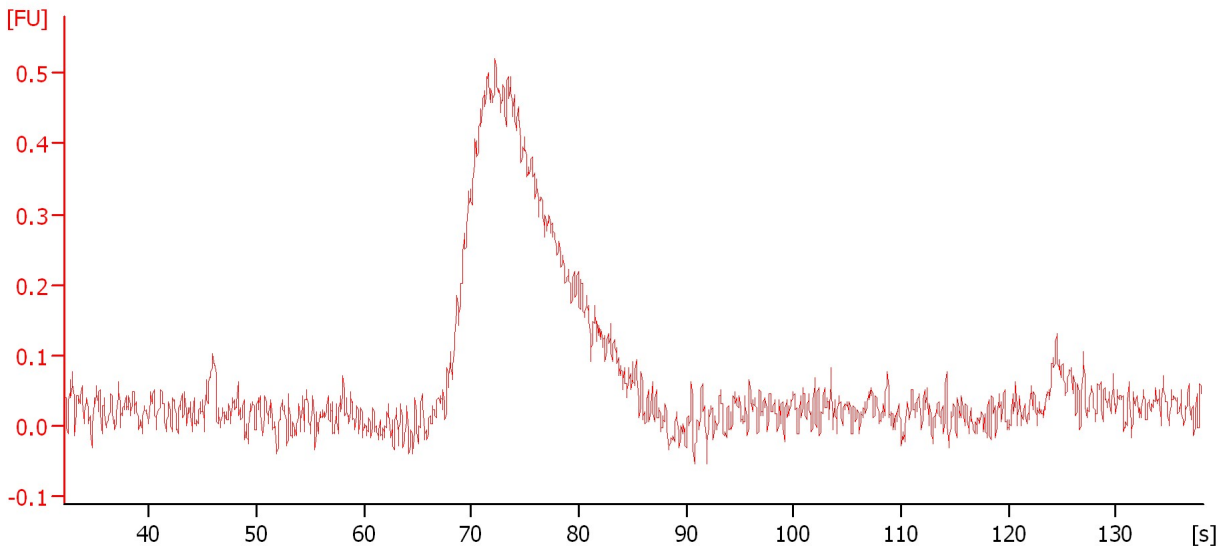
Noise: 0.0

Assay Class: High Sensitivity DNA Assay
Data Path: C:\...ents and Settings\Bioanalyzer\2012-03-20\2012-03-20_002.xad

Created: 3/20/2012 3:21:07 PM
Modified: 3/20/2012 4:02:29 PM

Electropherogram Summary Continued ...

A010_DSI_RNA_LIB1



Setpoint Deviations for sample 3 : A010 DSI RNA LIB1

Height Threshold [FU] : 0

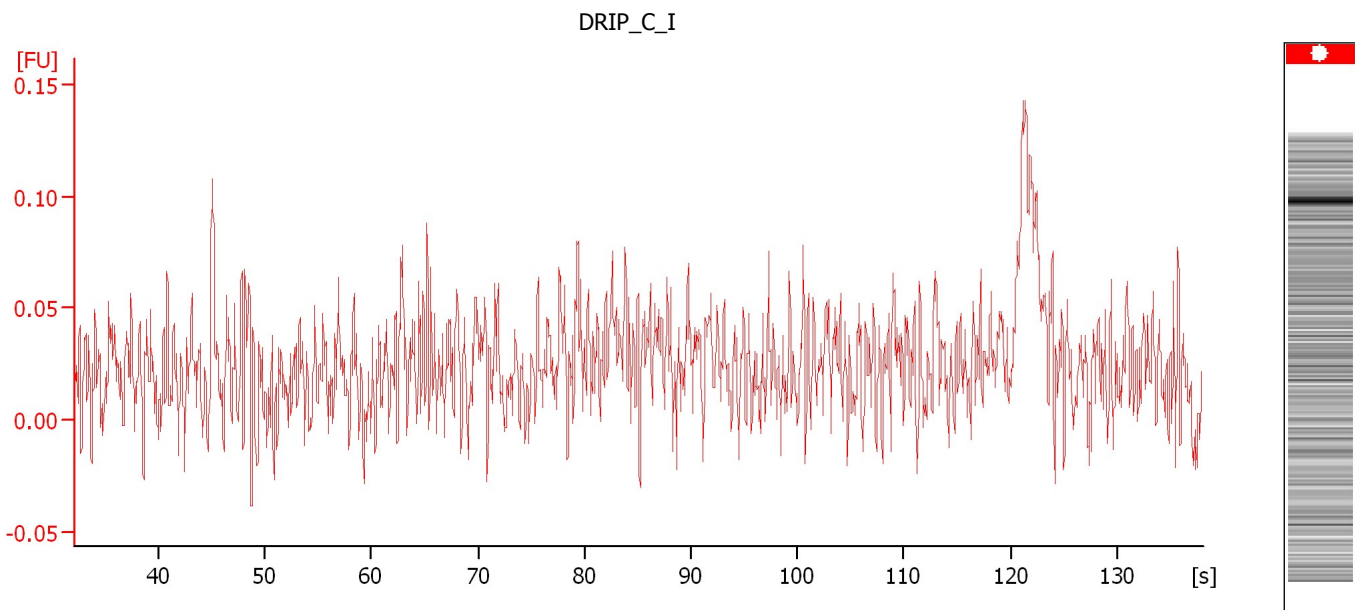
Overall Results for sample 3 : A010 DSI RNA LIB1

Noise: 0.0

Assay Class: High Sensitivity DNA Assay
Data Path: C:\...ents and Settings\Bioanalyzer\2012-03-20\2012-03-20_002.xad

Created: 3/20/2012 3:21:07 PM
Modified: 3/20/2012 4:02:29 PM

Electropherogram Summary Continued ...



Setpoint Deviations for sample 4 : DRIP C I

Height Threshold [FU] : 0

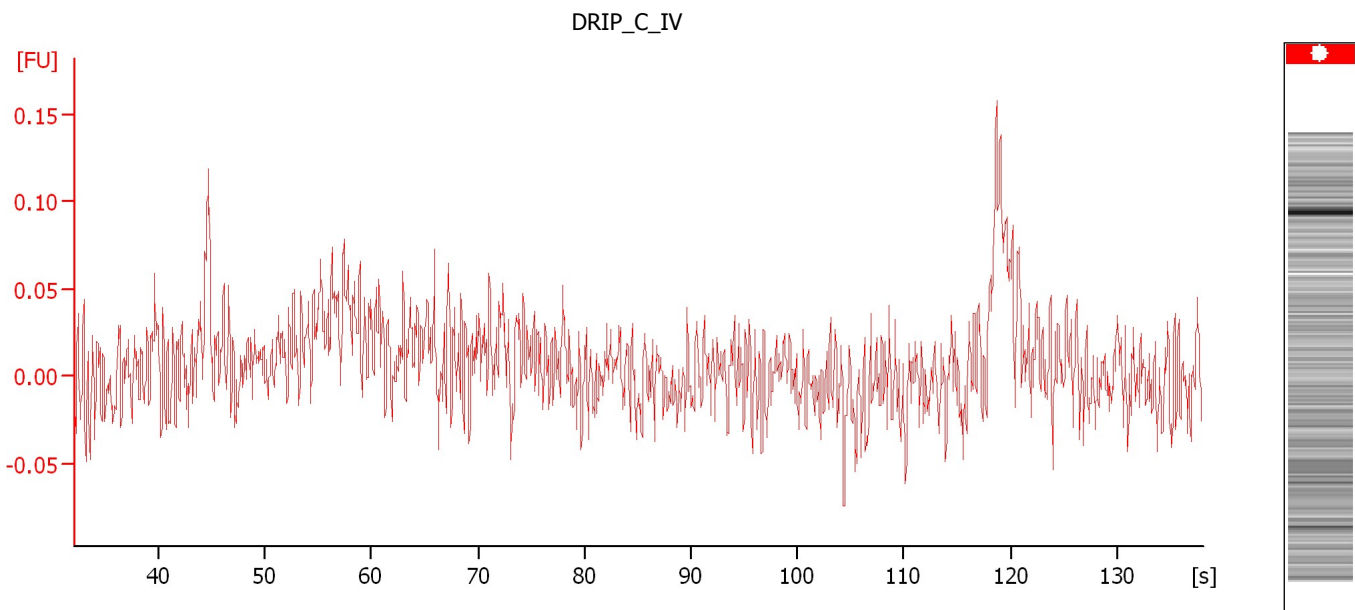
Overall Results for sample 4 : DRIP C I

Noise: 0.0

Assay Class: High Sensitivity DNA Assay
Data Path: C:\...ents and Settings\Bioanalyzer\2012-03-20\2012-03-20_002.xad

Created: 3/20/2012 3:21:07 PM
Modified: 3/20/2012 4:02:29 PM

Electropherogram Summary Continued ...



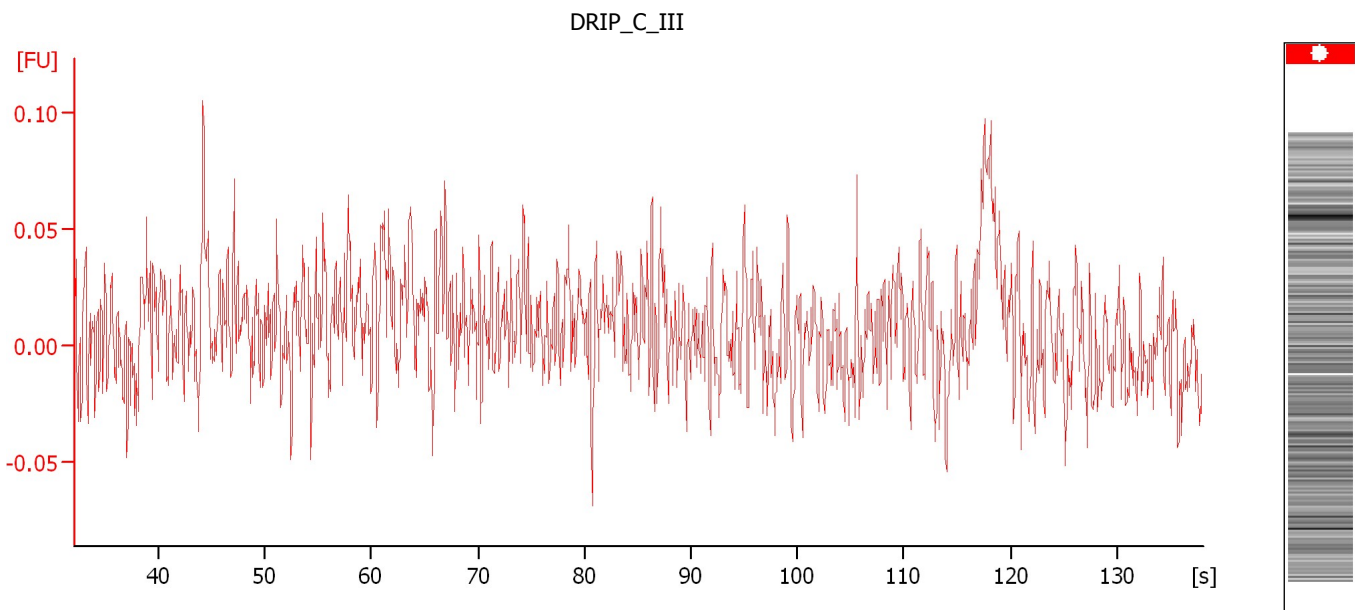
Overall Results for sample 5 : DRIP_C_IV

Noise: 0.0

Assay Class: High Sensitivity DNA Assay
Data Path: C:\...ents and Settings\Bioanalyzer\2012-03-20\2012-03-20_002.xad

Created: 3/20/2012 3:21:07 PM
Modified: 3/20/2012 4:02:29 PM

Electropherogram Summary Continued ...



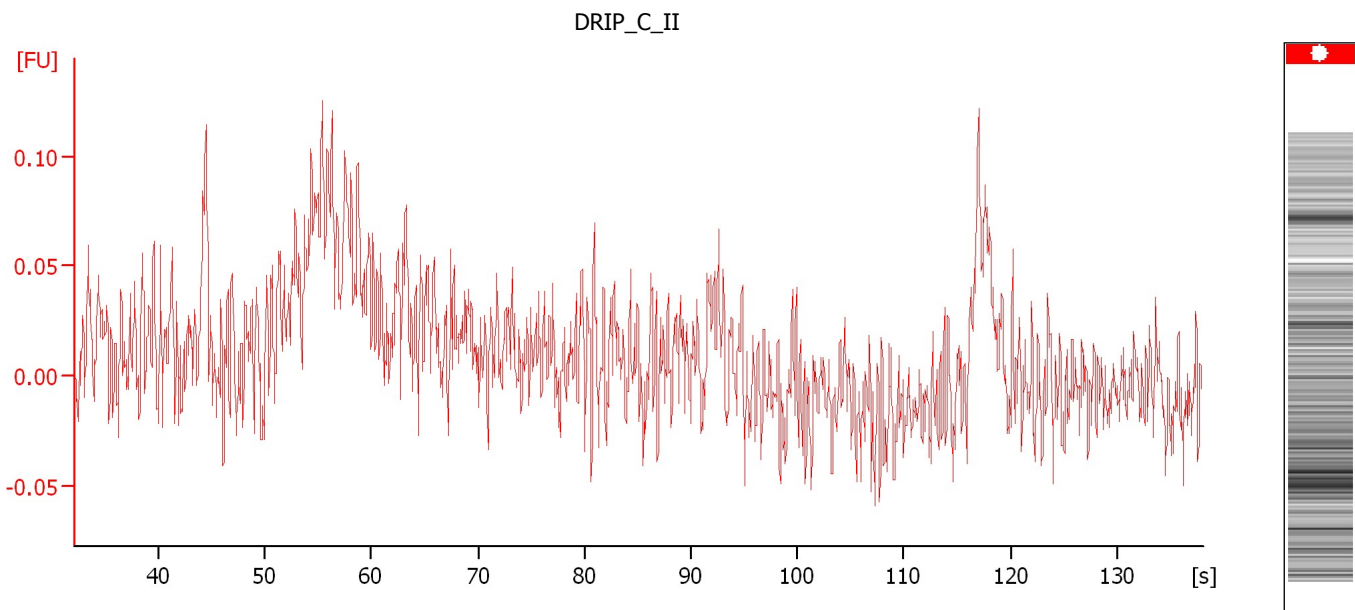
Overall Results for sample 6 : DRIP_C_III

Noise: 0.0

Assay Class: High Sensitivity DNA Assay
Data Path: C:\...ents and Settings\Bioanalyzer\2012-03-20\2012-03-20_002.xad

Created: 3/20/2012 3:21:07 PM
Modified: 3/20/2012 4:02:29 PM

Electropherogram Summary Continued ...



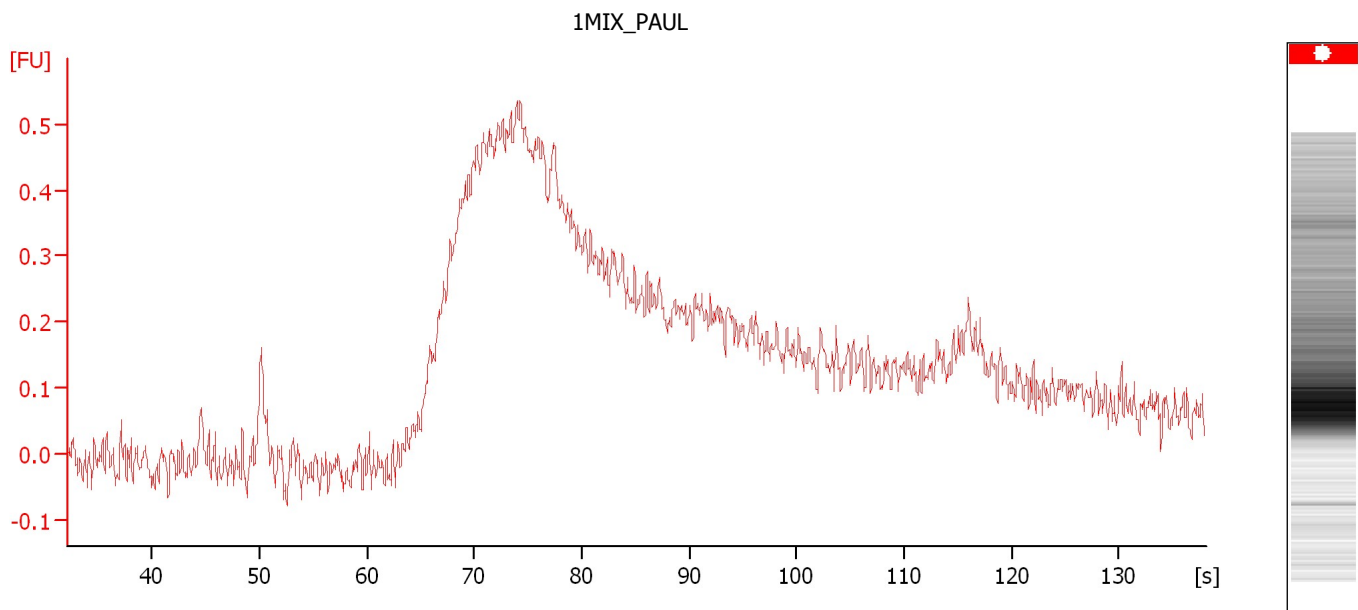
Overall Results for sample 7 : DRIP_C_II

Noise: 0.0

Assay Class: High Sensitivity DNA Assay
Data Path: C:\...ents and Settings\Bioanalyzer\2012-03-20\2012-03-20_002.xad

Created: 3/20/2012 3:21:07 PM
Modified: 3/20/2012 4:02:29 PM

Electropherogram Summary Continued ...



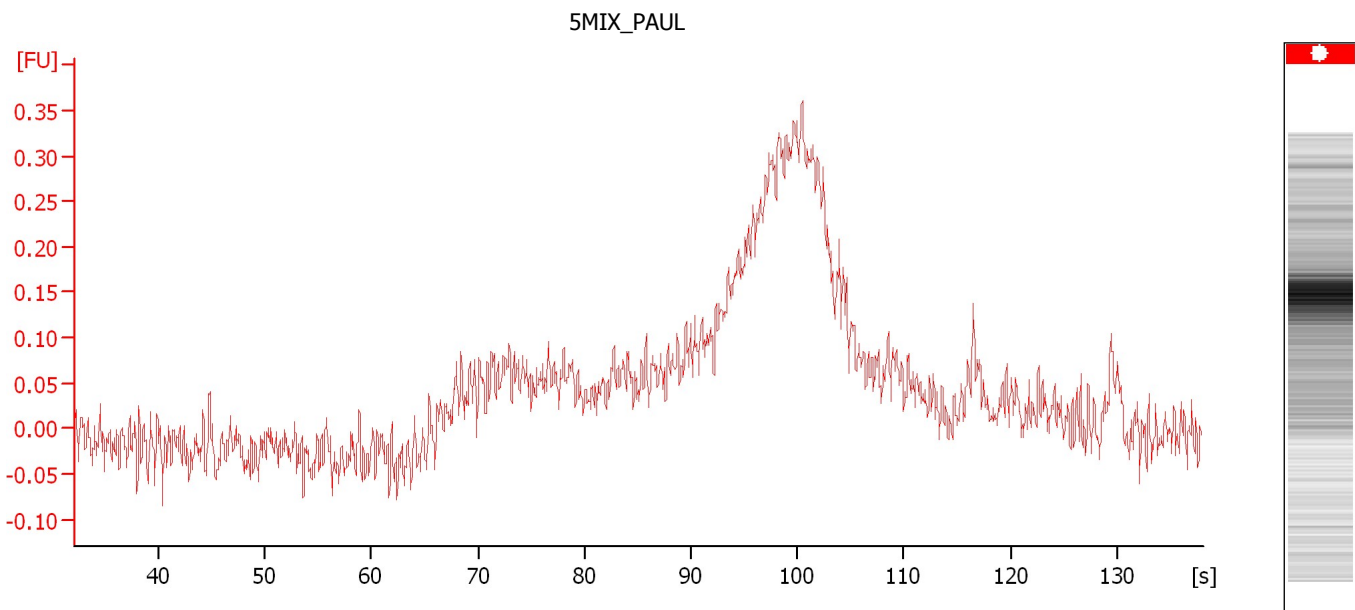
Overall Results for sample 8 : 1MIX_PAUL

Noise: 0.0

Assay Class: High Sensitivity DNA Assay
Data Path: C:\...ents and Settings\Bioanalyzer\2012-03-20\2012-03-20_002.xad

Created: 3/20/2012 3:21:07 PM
Modified: 3/20/2012 4:02:29 PM

Electropherogram Summary Continued ...



Overall Results for sample 9 : 5MIX_PAUL

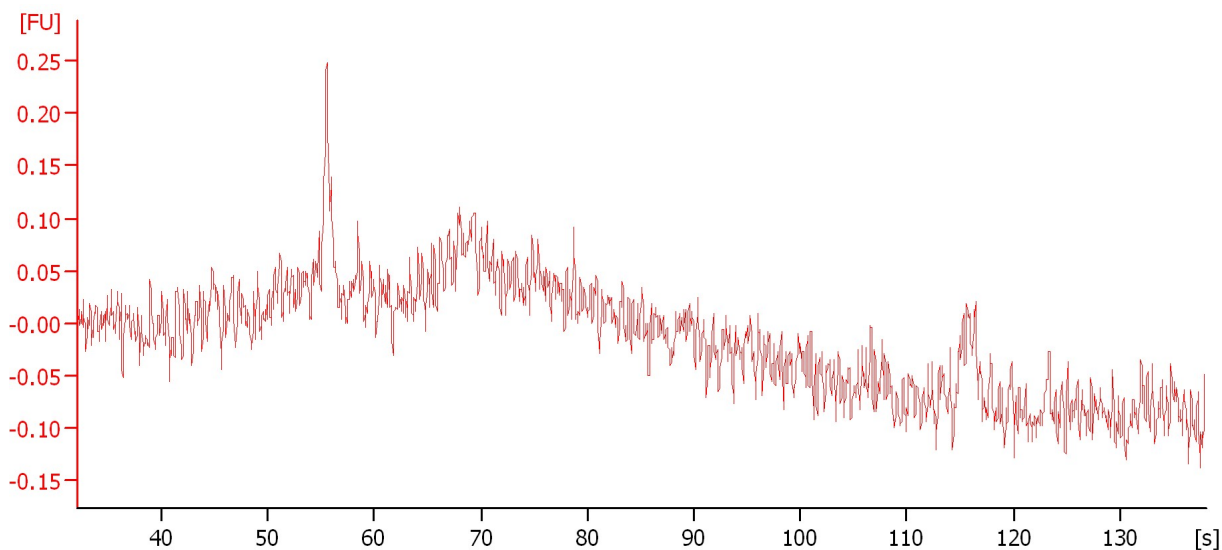
Noise: 0.0

Assay Class: High Sensitivity DNA Assay
Data Path: C:\...ents and Settings\Bioanalyzer\2012-03-20\2012-03-20_002.xad

Created: 3/20/2012 3:21:07 PM
Modified: 3/20/2012 4:02:29 PM

Electropherogram Summary Continued ...

9MIX_PAUL



Overall Results for sample 10 : 9MIX_PAUL

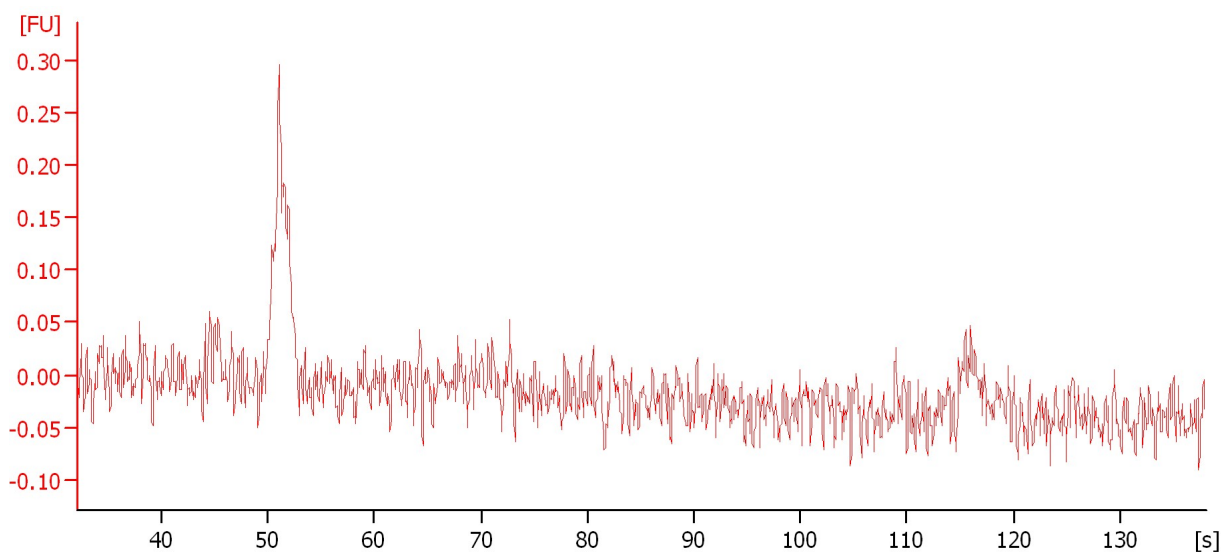
Noise: 0.0

Assay Class: High Sensitivity DNA Assay
Data Path: C:\...ents and Settings\Bioanalyzer\2012-03-20\2012-03-20_002.xad

Created: 3/20/2012 3:21:07 PM
Modified: 3/20/2012 4:02:29 PM

Electropherogram Summary Continued ...

11_MIX_HF57_INPUT



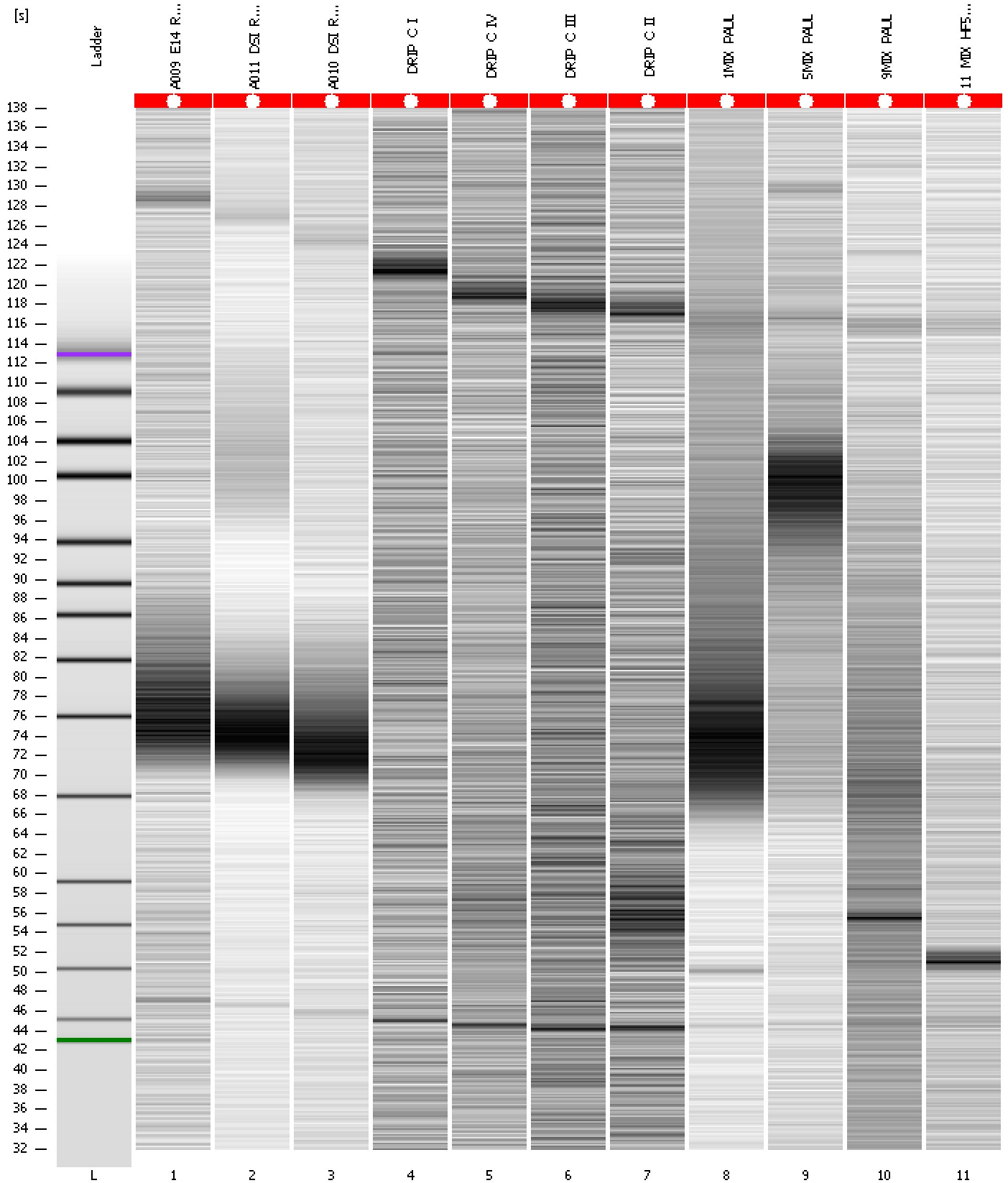
Overall Results for sample 11 : 11 MIX HF57 INPUT

Noise: 0.0

Assay Class: High Sensitivity DNA Assay
Data Path: C:\...ents and Settings\Bioanalyzer\2012-03-20\2012-03-20_002.xad

Created: 3/20/2012 3:21:07 PM
Modified: 3/20/2012 4:02:29 PM

Gel Image



Assay Class: High Sensitivity DNA Assay
 Data Path: C:\...ents and Settings\Bioanalyzer\2012-03-20\2012-03-20_002.xad

Created: 3/20/2012 3:21:07 PM
 Modified: 3/20/2012 4:02:29 PM

Run Logbook

Description	Number	Source	Category	Sub Category	Time	Time Zone	User	Host
Run ended on port 1 (Number of wells acquired: 12)		Instrument	Run		3/20/2012 4:02:25 PM	(GMT --07:00) Pacific Standard Time	UC Davis	D8XSMGH1
Run started on port 1 (File: C:\Documents and Settings\Bioanalyzer\2012-03-20\2012-03-20_002.xad)		Instrument	Run		3/20/2012 3:21:12 PM	(GMT --07:00) Pacific Standard Time	UC Davis	D8XSMGH1
Product Number : G2938B		Instrument	Run		3/20/2012 3:21:12 PM	(GMT --07:00) Pacific Standard Time	UC Davis	D8XSMGH1
Name :		Instrument	Run		3/20/2012 3:21:12 PM	(GMT --07:00) Pacific Standard Time	UC Davis	D8XSMGH1
Vendor : Agilent Technologies		Instrument	Run		3/20/2012 3:21:12 PM	(GMT --07:00) Pacific Standard Time	UC Davis	D8XSMGH1
Serial# : DE13701086		Instrument	Run		3/20/2012 3:21:12 PM	(GMT --07:00) Pacific Standard Time	UC Davis	D8XSMGH1
Firmware : C.01.069		Instrument	Run		3/20/2012 3:21:12 PM	(GMT --07:00) Pacific Standard Time	UC Davis	D8XSMGH1
Cartridge : Electrode		Instrument	Run		3/20/2012 3:21:12 PM	(GMT --07:00) Pacific Standard Time	UC Davis	D8XSMGH1