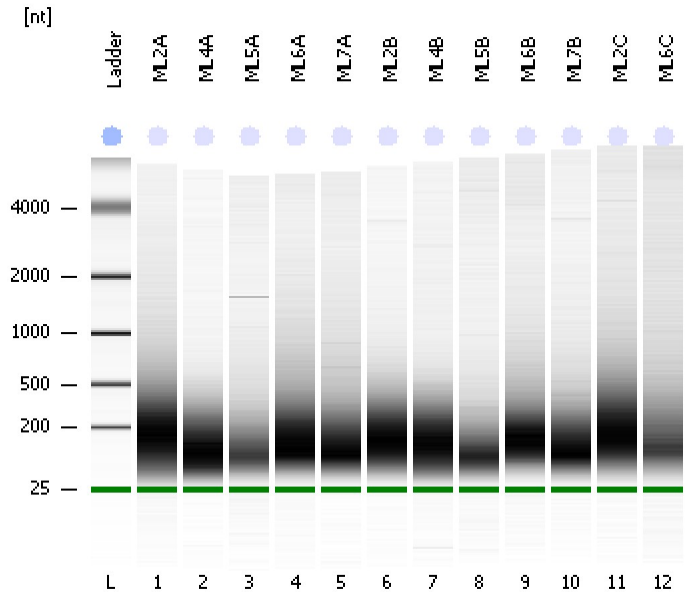


Assay Class: Eukaryote Total RNA Nano  
Data Path: C:\...ents and Settings\Bioanalyzer\2012-03-21\2012-03-21\_001.xad

Created: 3/21/2012 9:38:29 AM  
Modified: 3/21/2012 10:05:18 AM

Electrophoresis File Run Summary



Instrument Information:

Instrument Name: DE13701086      Firmware: C.01.069  
Serial#: DE13701086      Type: G2938B

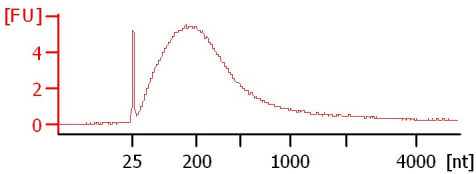
Assay Information:

Assay Origin Path: C:\Program Files\Agilent\2100 bioanalyzer\2100 expert\assays\RNA\Eukaryote Total RNA Nano Series II.xsy  
Assay Class: Eukaryote Total RNA Nano  
Version: 2.6  
Assay Comments: Total RNA Analysis ng sensitivity (Eukaryote)  
© Copyright 2003 - 2009 Agilent Technologies, Inc.

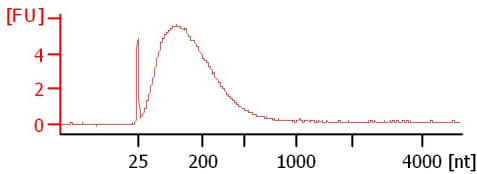
Chip Information:

Chip Lot #:   
Reagent Kit Lot #:   
Chip Comments:

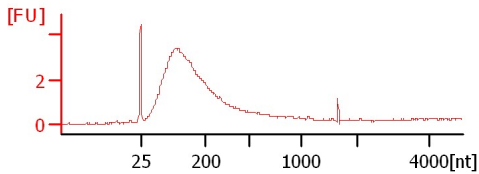
**ML2A**  
RIN: 2.30



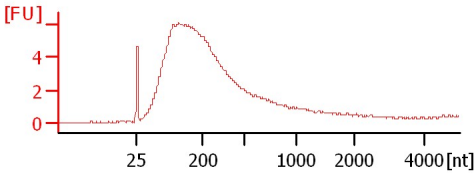
**ML4A**  
RIN: 2.40



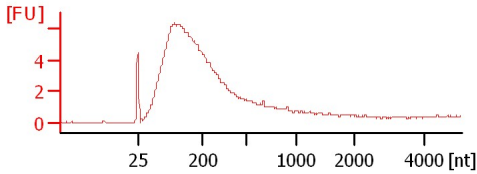
**ML5A**  
RIN: 2.60



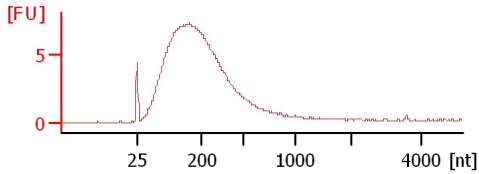
**ML6A**  
RIN: 2.30



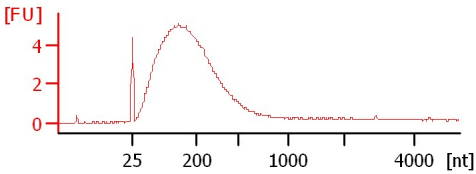
**ML7A**  
RIN: 2.30



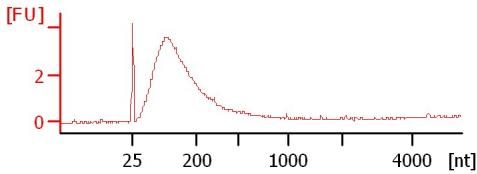
**ML2B**  
RIN: 2.30



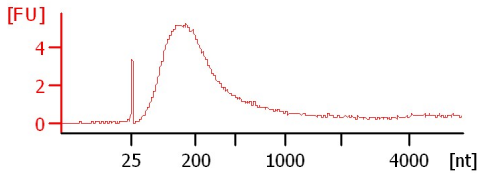
**ML4B**  
RIN: 2.40



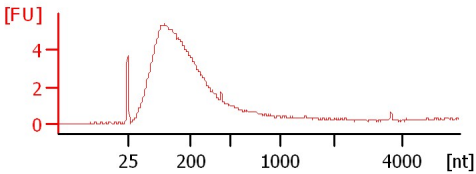
**ML5B**  
RIN: 2.50



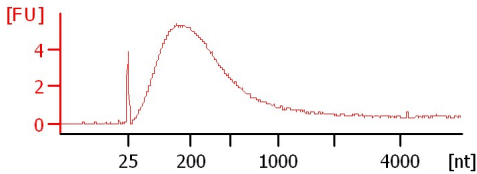
**ML6B**  
RIN: 2.30



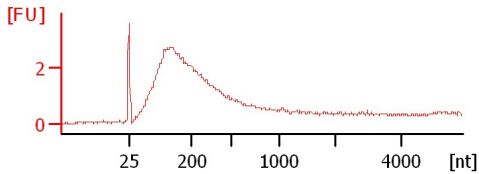
**ML7B**  
RIN: 2.60



**ML2C**  
RIN: 2.60



**ML6C**  
RIN: 2.40



Assay Class: Eukaryote Total RNA Nano  
 Data Path: C:\...ents and Settings\Bioanalyzer\2012-03-21\2012-03-21\_001.xad

Created: 3/21/2012 9:38:29 AM  
 Modified: 3/21/2012 10:05:18 AM

**Electrophoresis File Run Summary (Chip Summary)**

Sample Name	Sample Comment	Status	Result Label	Result Color
ML2A		✓	RIN: 2.30	
ML4A		✓	RIN: 2.40	
ML5A		✓	RIN: 2.60	
ML6A		✓	RIN: 2.30	
ML7A		✓	RIN: 2.30	
ML2B		✓	RIN: 2.30	
ML4B		✓	RIN: 2.40	
ML5B		✓	RIN: 2.50	
ML6B		✓	RIN: 2.30	
ML7B		✓	RIN: 2.60	
ML2C		✓	RIN: 2.60	
ML6C		✓	RIN: 2.40	
Ladder		✓	All Other Samples	

**Chip Lot #**

**Reagent Kit Lot #**

**Chip Comments :**

Assay Class: Eukaryote Total RNA Nano  
Data Path: C:\...ents and Settings\Bioanalyzer\2012-03-21\2012-03-21\_001.xad

Created: 3/21/2012 9:38:29 AM  
Modified: 3/21/2012 10:05:18 AM

**Electrophoresis Assay Details**

**General Analysis Settings**

Number of Available Sample and Ladder Wells (Max.) : 13  
Minimum Visible Range [s] : 17  
Maximum Visible Range [s] : 70  
Start Analysis Time Range [s] : 19  
End Analysis Time Range [s] : 69  
Ladder Concentration [ng/μl] : 150  
Lower Marker Concentration [ng/μl] : 0  
Upper Marker Concentration [ng/μl] : 0  
Used Lower Marker for Quantitation  
Standard Curve Fit is Logarithmic  
Show Data Aligned to Lower Marker

**Integrator Settings**

Integration Start Time [s] : 19  
Integration End Time [s] : 69  
Slope Threshold : 0.6  
Height Threshold [FU] : 0.5  
Area Threshold : 0.2  
Width Threshold [s] : 0.5  
Baseline Plateau [s] : 6

**Filter Settings**

Filter Width [s] : 0.5  
Polynomial Order : 4

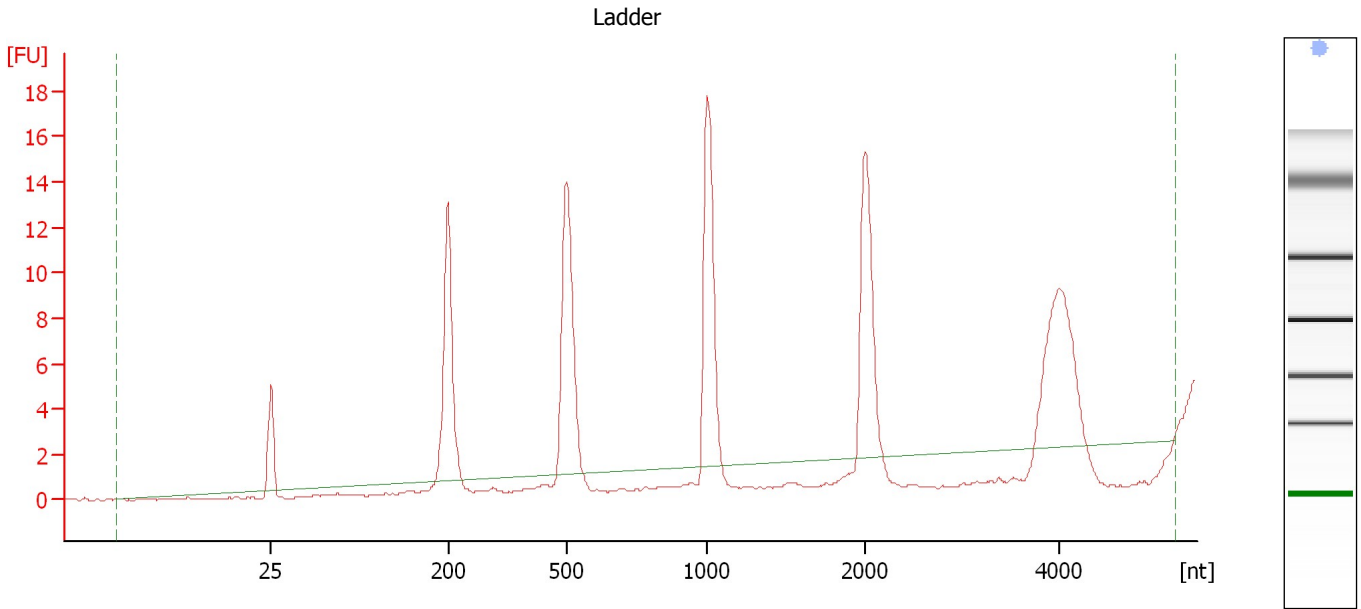
**Ladder**

Ladder Peak	Size
1	25
2	200
3	500
4	1000
5	2000
6	4000

Assay Class: Eukaryote Total RNA Nano  
Data Path: C:\...ents and Settings\Bioanalyzer\2012-03-21\2012-03-21\_001.xad

Created: 3/21/2012 9:38:29 AM  
Modified: 3/21/2012 10:05:18 AM

**Electropherogram Summary**



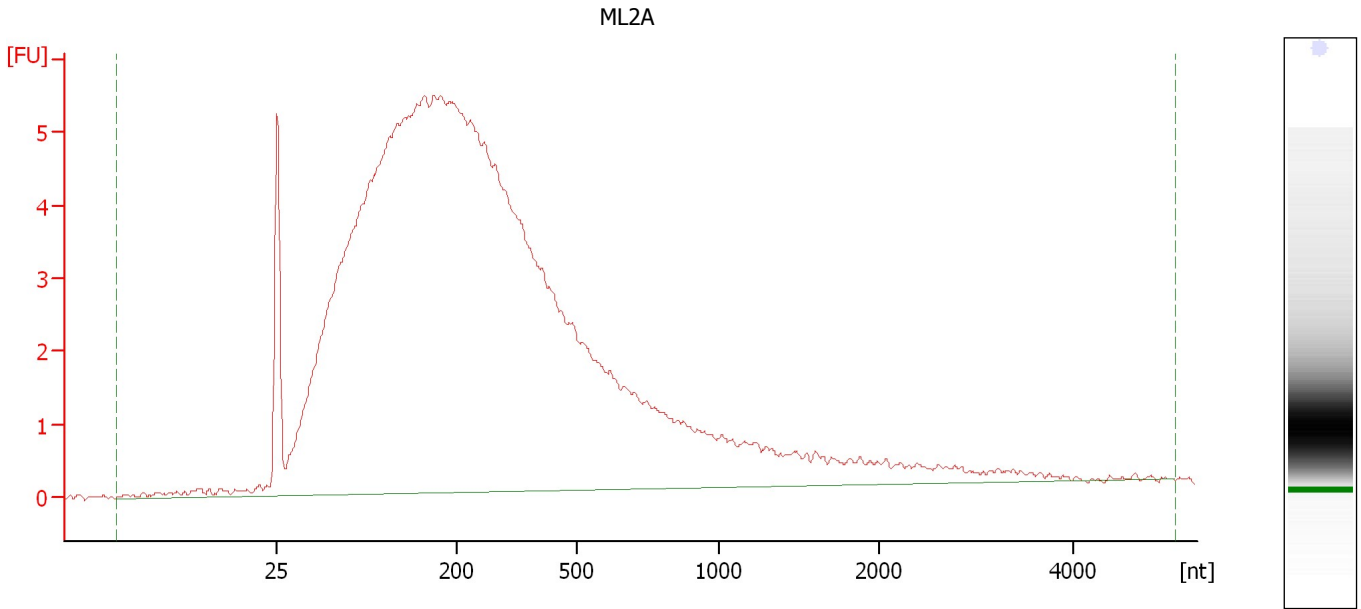
**Overall Results for Ladder**

RNA Area:	81.7	Result Flagging Color:	<span style="background-color: #add8e6; border: 1px solid black; display: inline-block; width: 20px; height: 10px;"></span>
RNA Concentration:	150 ng/ $\mu$ l	Result Flagging Label:	All Other Samples

Assay Class: Eukaryote Total RNA Nano  
Data Path: C:\...ents and Settings\Bioanalyzer\2012-03-21\2012-03-21\_001.xad

Created: 3/21/2012 9:38:29 AM  
Modified: 3/21/2012 10:05:18 AM

**Electropherogram Summary Continued ...**



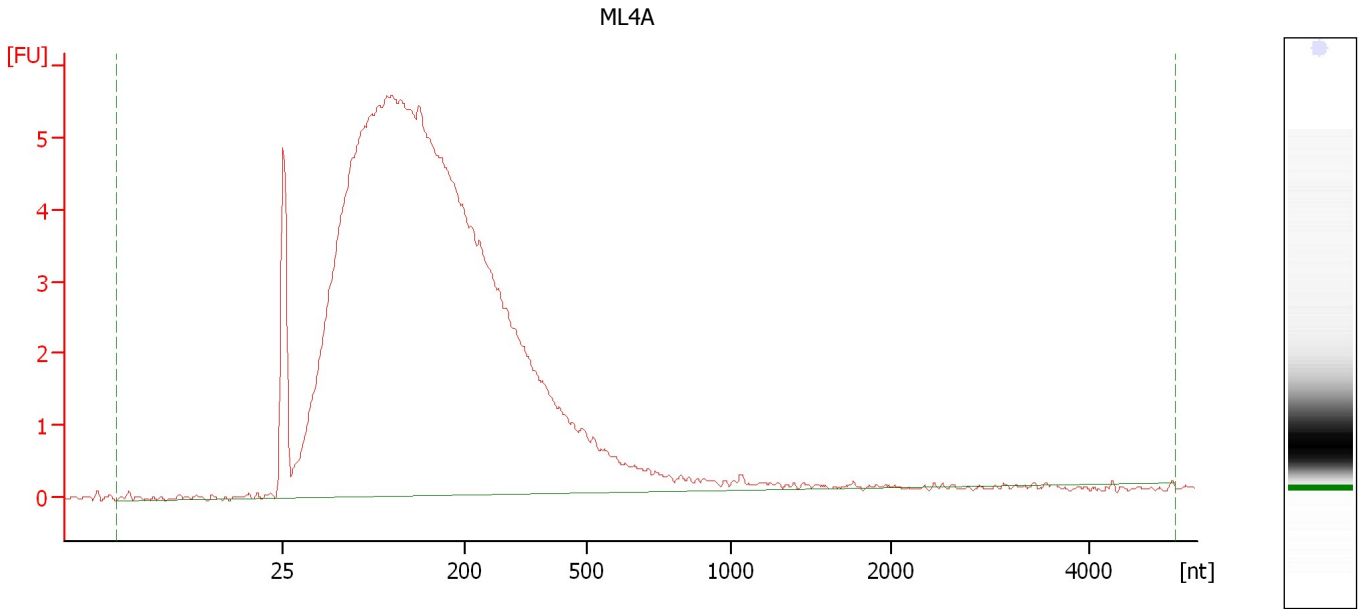
**Overall Results for sample 1 : ML2A**

RNA Area:	179.3	RNA Integrity Number (RIN):	2.3 (B.02.08)
RNA Concentration:	329 ng/μl	Result Flagging Color:	<span style="background-color: #ccccff; border: 1px solid black; display: inline-block; width: 20px; height: 10px;"></span>
rRNA Ratio [28s / 18s]:	0.0	Result Flagging Label:	RIN: 2.30

Assay Class: Eukaryote Total RNA Nano  
Data Path: C:\...ents and Settings\Bioanalyzer\2012-03-21\2012-03-21\_001.xad

Created: 3/21/2012 9:38:29 AM  
Modified: 3/21/2012 10:05:18 AM

**Electropherogram Summary Continued ...**



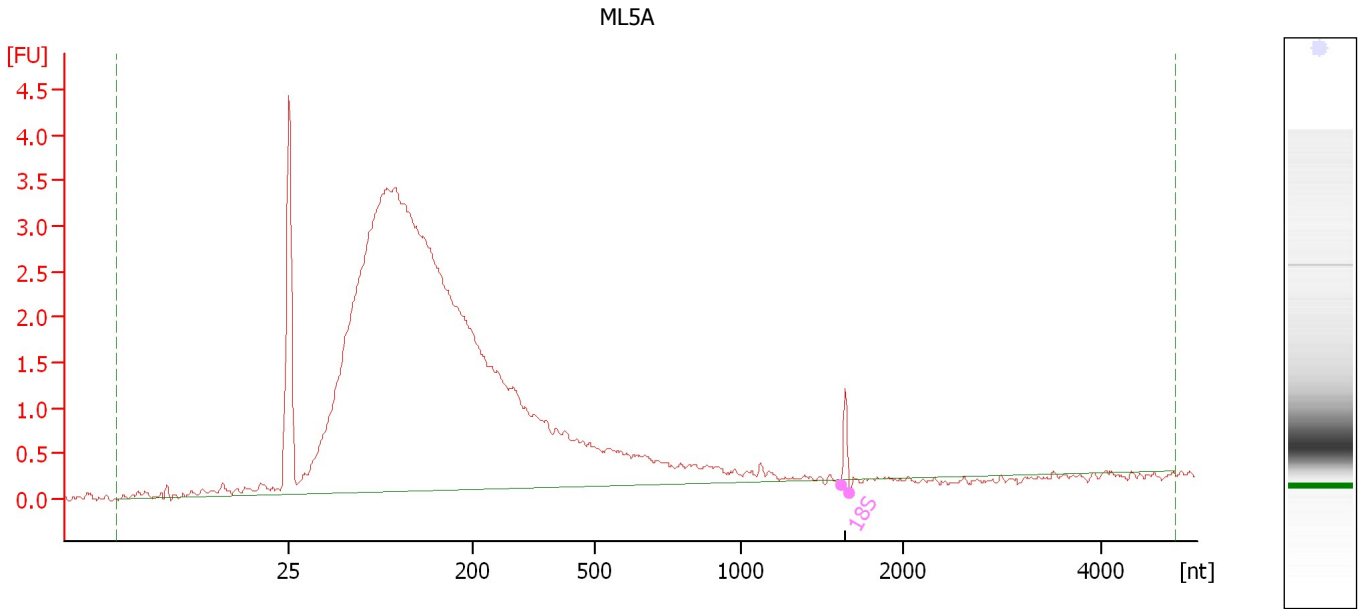
**Overall Results for sample 2 : ML4A**

RNA Area:	141.6	RNA Integrity Number (RIN):	2.4 (B.02.08)
RNA Concentration:	260 ng/μl	Result Flagging Color:	<span style="background-color: #ccccff; border: 1px solid black; display: inline-block; width: 20px; height: 10px;"></span>
rRNA Ratio [28s / 18s]:	0.0	Result Flagging Label:	RIN: 2.40

Assay Class: Eukaryote Total RNA Nano  
Data Path: C:\...ents and Settings\Bioanalyzer\2012-03-21\2012-03-21\_001.xad

Created: 3/21/2012 9:38:29 AM  
Modified: 3/21/2012 10:05:18 AM

**Electropherogram Summary Continued ...**



**Overall Results for sample 3 : ML5A**

RNA Area:	71.7	RNA Integrity Number (RIN):	2.6 (B.02.08)
RNA Concentration:	132 ng/μl	Result Flagging Color:	<span style="background-color: #ccccff; border: 1px solid black; display: inline-block; width: 20px; height: 10px;"></span>
rRNA Ratio [28s / 18s]:	0.0	Result Flagging Label:	RIN: 2.60

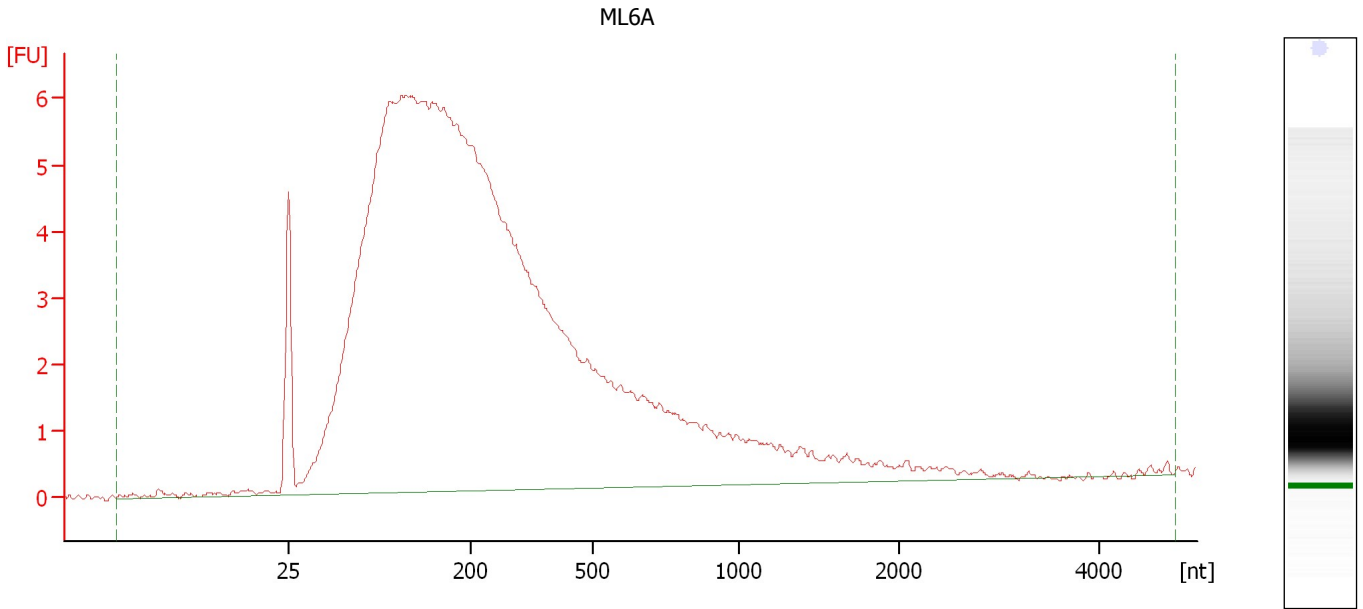
**Fragment table for sample 3 : ML5A**

Name	Start Size [nt]	End Size [nt]	Area	% of total Area
18S	1,626	1,678	0.4	0.6

Assay Class: Eukaryote Total RNA Nano  
Data Path: C:\...ents and Settings\Bioanalyzer\2012-03-21\2012-03-21\_001.xad

Created: 3/21/2012 9:38:29 AM  
Modified: 3/21/2012 10:05:18 AM

**Electropherogram Summary Continued ...**



**Overall Results for sample 4 : ML6A**

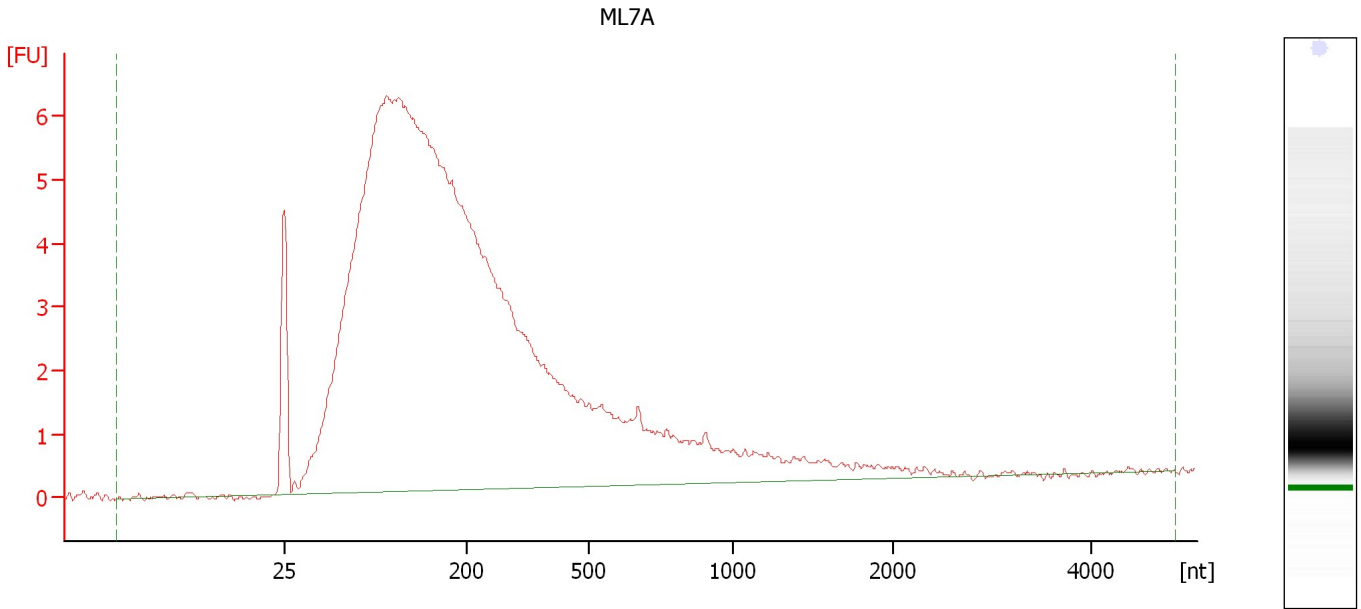
RNA Area:	172.5	RNA Integrity Number (RIN):	2.3 (B.02.08)
RNA Concentration:	317 ng/μl	Result Flagging Color:	<span style="background-color: #ccccff; border: 1px solid black; display: inline-block; width: 20px; height: 10px;"></span>
rRNA Ratio [28s / 18s]:	0.0	Result Flagging Label:	RIN: 2.30



Assay Class: Eukaryote Total RNA Nano  
Data Path: C:\...ents and Settings\Bioanalyzer\2012-03-21\2012-03-21\_001.xad

Created: 3/21/2012 9:38:29 AM  
Modified: 3/21/2012 10:05:18 AM

**Electropherogram Summary Continued ...**



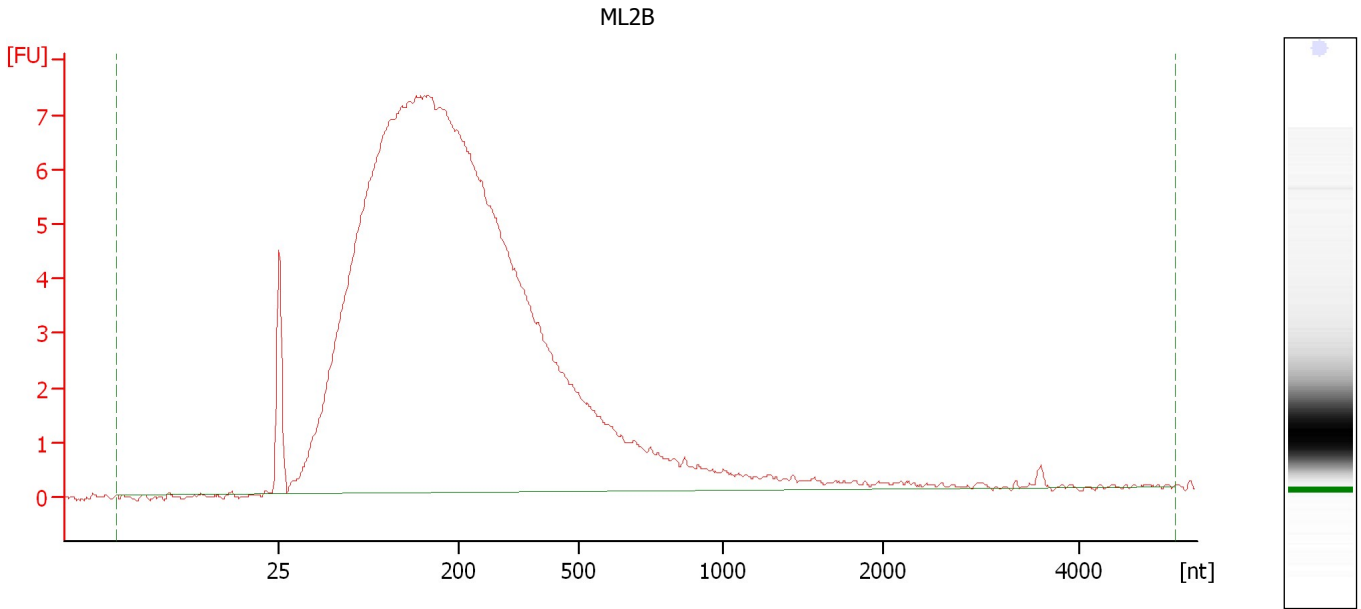
**Overall Results for sample 5 : ML7A**

RNA Area:	155.3	RNA Integrity Number (RIN):	2.3 (B.02.08)
RNA Concentration:	285 ng/μl	Result Flagging Color:	<span style="background-color: #ccccff; border: 1px solid black; display: inline-block; width: 20px; height: 10px;"></span>
rRNA Ratio [28s / 18s]:	0.0	Result Flagging Label:	RIN: 2.30

Assay Class: Eukaryote Total RNA Nano  
Data Path: C:\...ents and Settings\Bioanalyzer\2012-03-21\2012-03-21\_001.xad

Created: 3/21/2012 9:38:29 AM  
Modified: 3/21/2012 10:05:18 AM

**Electropherogram Summary Continued ...**



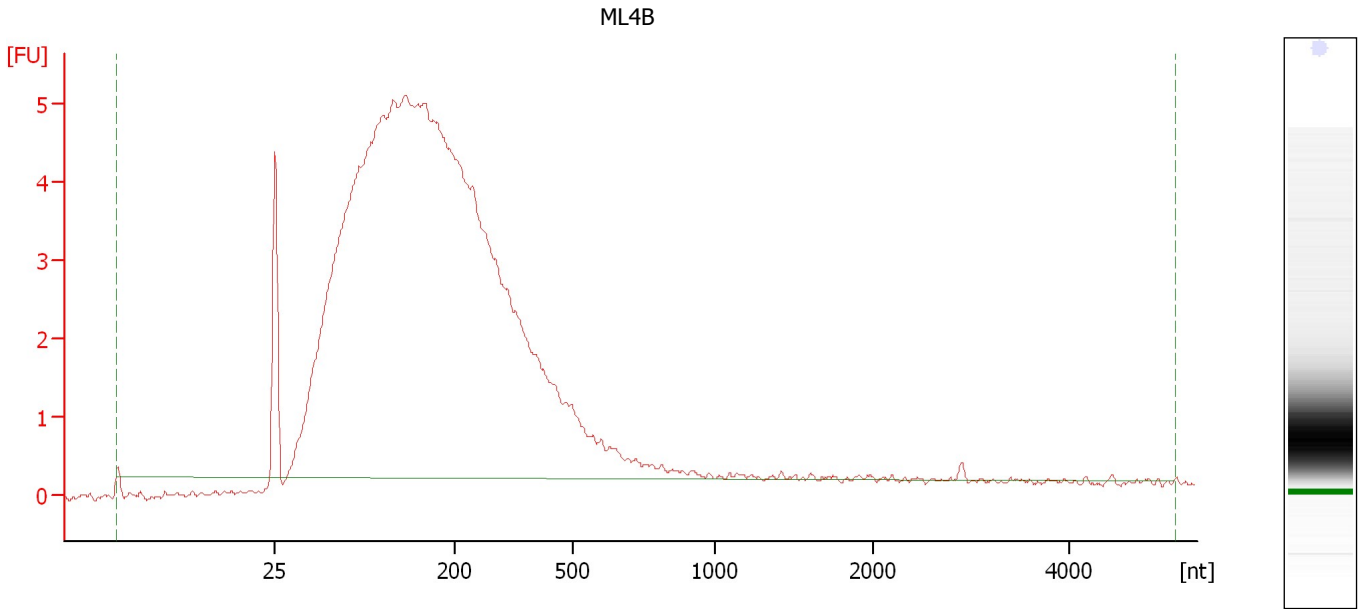
**Overall Results for sample 6 : ML2B**

RNA Area:	191.4	RNA Integrity Number (RIN):	2.3 (B.02.08)
RNA Concentration:	351 ng/μl	Result Flagging Color:	<span style="background-color: #ccccff; border: 1px solid black; display: inline-block; width: 20px; height: 10px;"></span>
rRNA Ratio [28s / 18s]:	0.0	Result Flagging Label:	RIN: 2.30

Assay Class: Eukaryote Total RNA Nano  
Data Path: C:\...ents and Settings\Bioanalyzer\2012-03-21\2012-03-21\_001.xad

Created: 3/21/2012 9:38:29 AM  
Modified: 3/21/2012 10:05:18 AM

**Electropherogram Summary Continued ...**



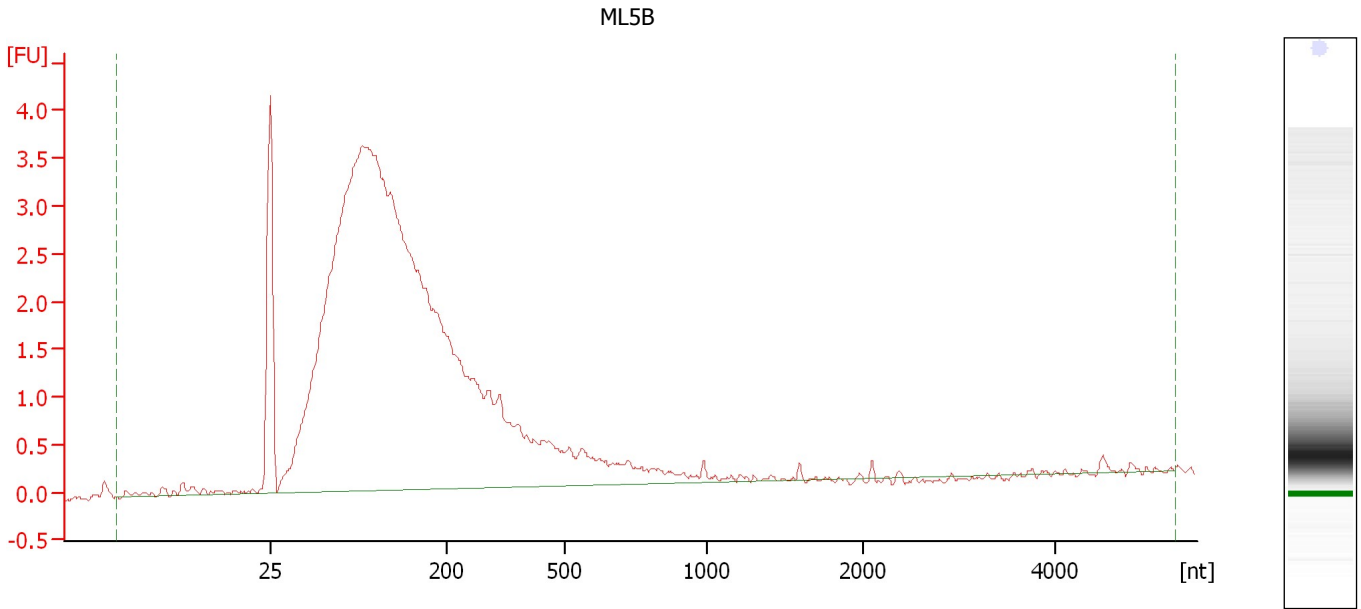
**Overall Results for sample 7 : ML4B**

RNA Area:	123.4	RNA Integrity Number (RIN):	2.4 (B.02.08)
RNA Concentration:	226 ng/μl	Result Flagging Color:	<span style="background-color: #ccccff; border: 1px solid black; display: inline-block; width: 20px; height: 10px;"></span>
rRNA Ratio [28s / 18s]:	0.0	Result Flagging Label:	RIN: 2.40

Assay Class: Eukaryote Total RNA Nano  
Data Path: C:\...ents and Settings\Bioanalyzer\2012-03-21\2012-03-21\_001.xad

Created: 3/21/2012 9:38:29 AM  
Modified: 3/21/2012 10:05:18 AM

**Electropherogram Summary Continued ...**



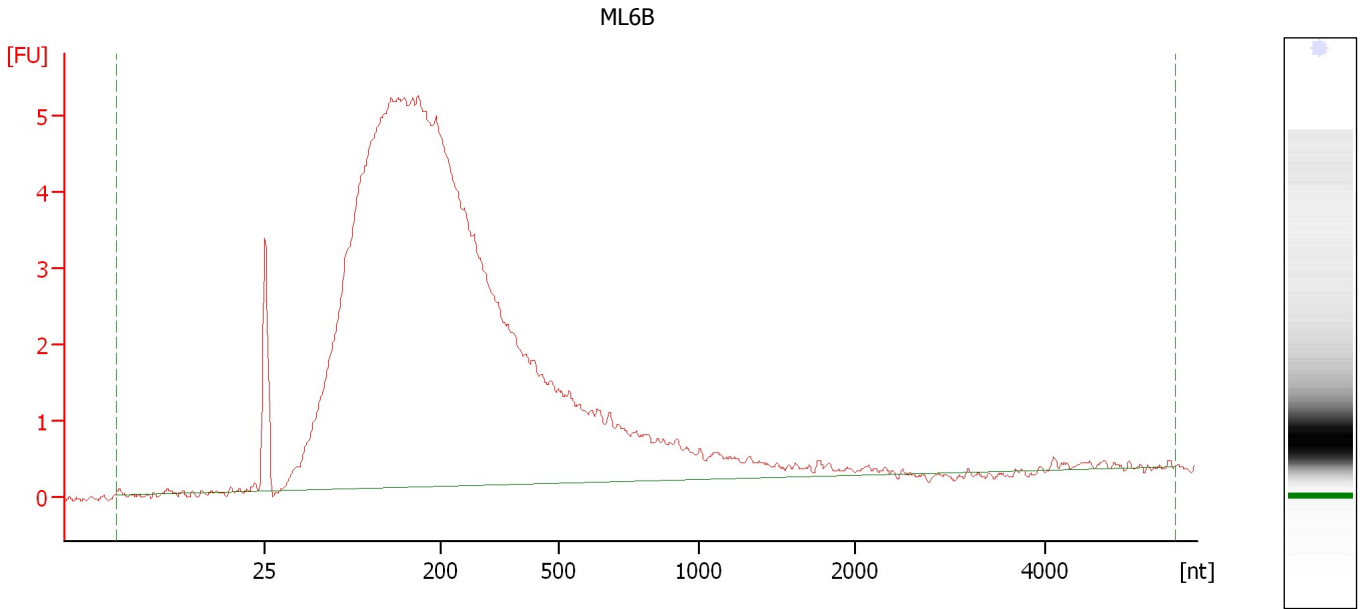
**Overall Results for sample 8 : ML5B**

RNA Area:	72.2	RNA Integrity Number (RIN):	2.5 (B.02.08)
RNA Concentration:	132 ng/μl	Result Flagging Color:	<span style="background-color: #ccccff; border: 1px solid black; display: inline-block; width: 20px; height: 10px;"></span>
rRNA Ratio [28s / 18s]:	0.0	Result Flagging Label:	RIN: 2.50

Assay Class: Eukaryote Total RNA Nano  
Data Path: C:\...ents and Settings\Bioanalyzer\2012-03-21\2012-03-21\_001.xad

Created: 3/21/2012 9:38:29 AM  
Modified: 3/21/2012 10:05:18 AM

**Electropherogram Summary Continued ...**



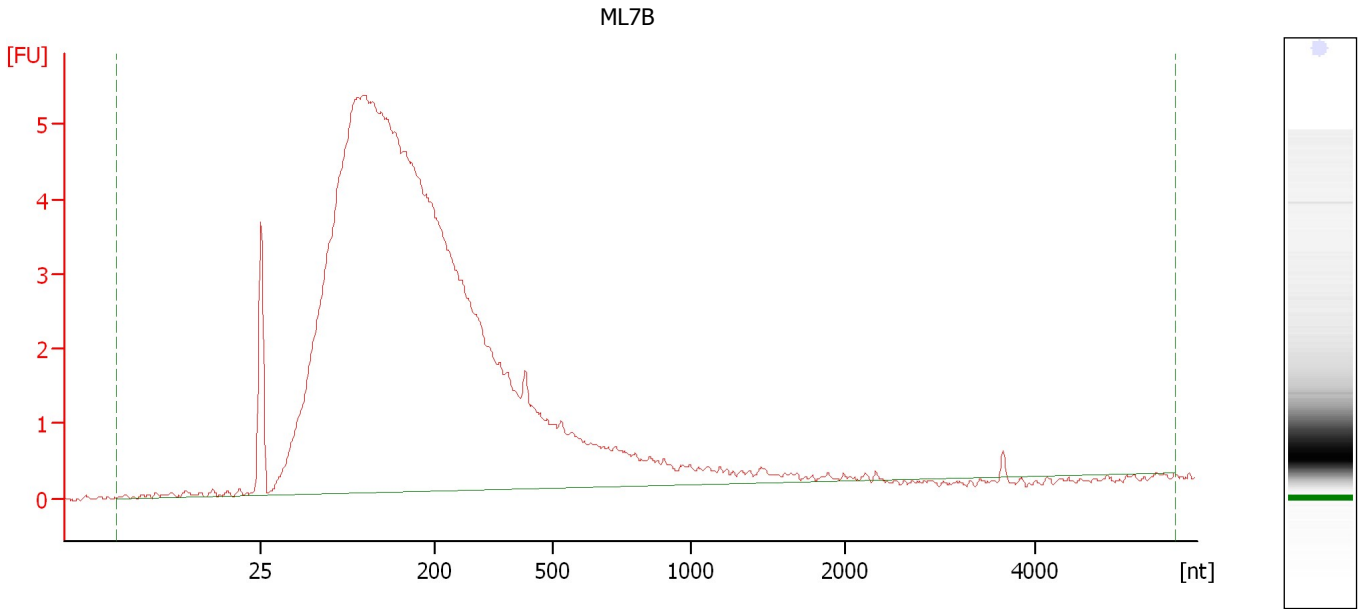
**Overall Results for sample 9 : ML6B**

RNA Area:	126.0	RNA Integrity Number (RIN):	2.3 (B.02.08)
RNA Concentration:	231 ng/μl	Result Flagging Color:	<span style="background-color: #ccccff; border: 1px solid black; display: inline-block; width: 20px; height: 10px;"></span>
rRNA Ratio [28s / 18s]:	0.0	Result Flagging Label:	RIN: 2.30

Assay Class: Eukaryote Total RNA Nano  
Data Path: C:\...ents and Settings\Bioanalyzer\2012-03-21\2012-03-21\_001.xad

Created: 3/21/2012 9:38:29 AM  
Modified: 3/21/2012 10:05:18 AM

**Electropherogram Summary Continued ...**



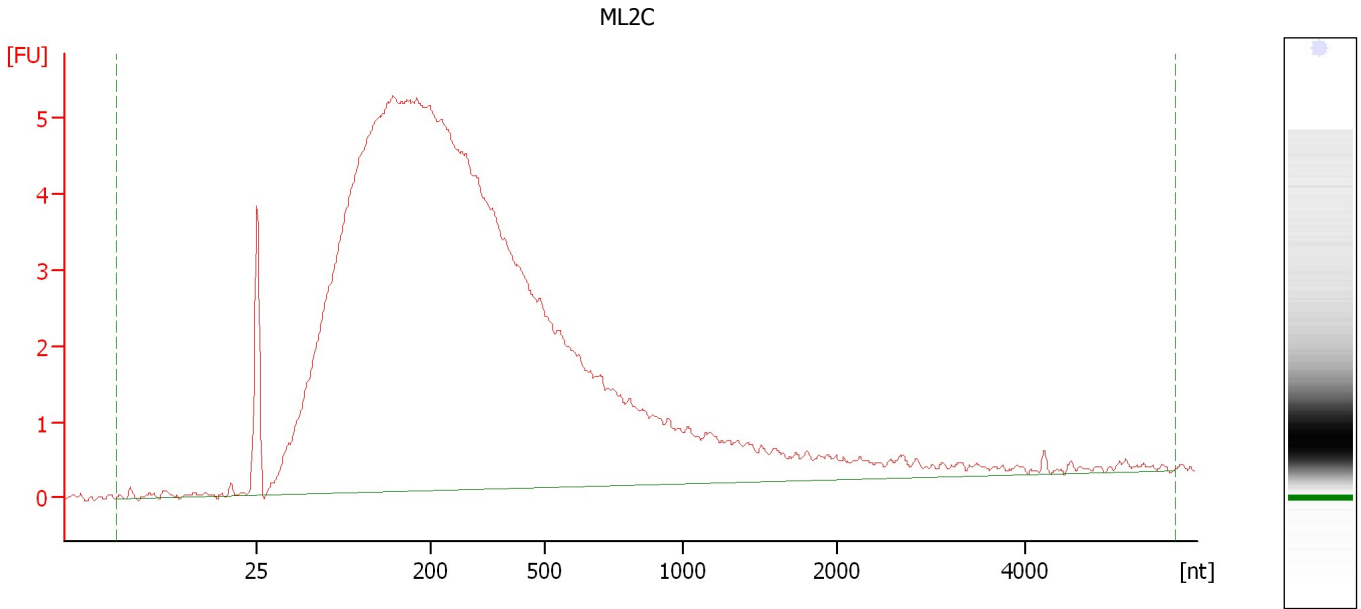
**Overall Results for sample 10 : ML7B**

RNA Area:	124.5	RNA Integrity Number (RIN):	2.6 (B.02.08)
RNA Concentration:	229 ng/μl	Result Flagging Color:	<span style="background-color: #ccccff; border: 1px solid black; display: inline-block; width: 20px; height: 10px;"></span>
rRNA Ratio [28s / 18s]:	0.0	Result Flagging Label:	RIN: 2.60

Assay Class: Eukaryote Total RNA Nano  
Data Path: C:\...ents and Settings\Bioanalyzer\2012-03-21\2012-03-21\_001.xad

Created: 3/21/2012 9:38:29 AM  
Modified: 3/21/2012 10:05:18 AM

**Electropherogram Summary Continued ...**



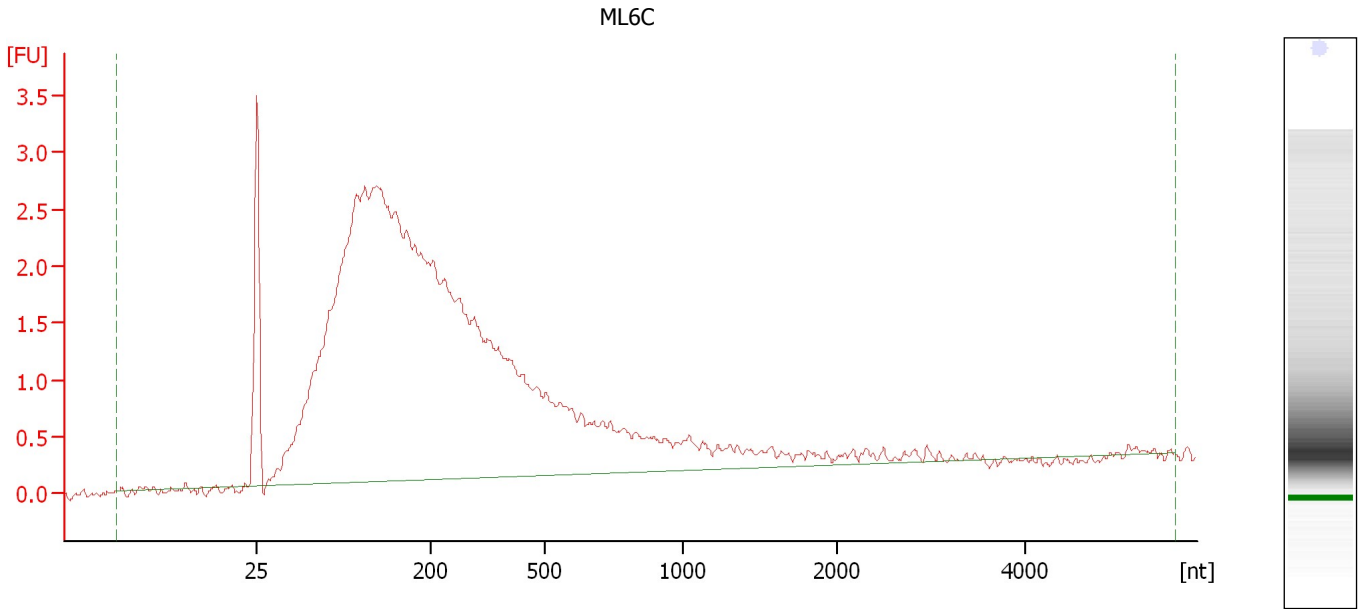
**Overall Results for sample 11 : ML2C**

RNA Area:	165.8	RNA Integrity Number (RIN):	2.6 (B.02.08)
RNA Concentration:	304 ng/μl	Result Flagging Color:	<span style="background-color: #ccccff; border: 1px solid black; display: inline-block; width: 20px; height: 10px;"></span>
rRNA Ratio [28s / 18s]:	0.0	Result Flagging Label:	RIN: 2.60

Assay Class: Eukaryote Total RNA Nano  
Data Path: C:\...ents and Settings\Bioanalyzer\2012-03-21\2012-03-21\_001.xad

Created: 3/21/2012 9:38:29 AM  
Modified: 3/21/2012 10:05:18 AM

**Electropherogram Summary Continued ...**



**Overall Results for sample 12 : ML6C**

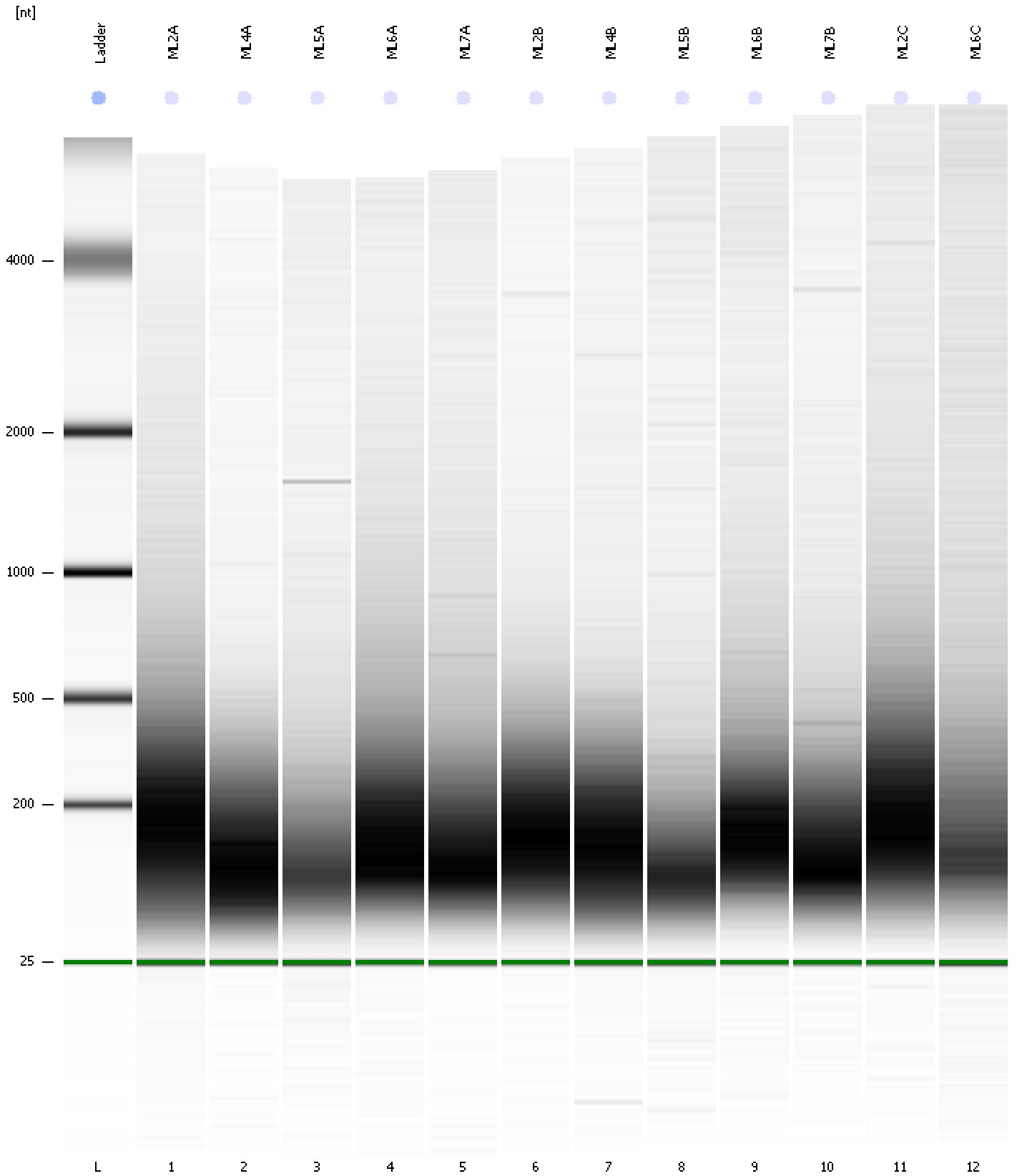
RNA Area:	66.4	RNA Integrity Number (RIN):	2.4 (B.02.08, Anomaly Threshold(s) manually adapted)
RNA Concentration:	122 ng/μl	Result Flagging Color:	<span style="background-color: #ccccff; border: 1px solid black; display: inline-block; width: 20px; height: 10px;"></span>
rRNA Ratio [28s / 18s]:	0.0	Result Flagging Label:	RIN: 2.40



Assay Class: Eukaryote Total RNA Nano  
Data Path: C:\...ents and Settings\Bioanalyzer\2012-03-21\2012-03-21\_001.xad

Created: 3/21/2012 9:38:29 AM  
Modified: 3/21/2012 10:05:18 AM

**Gel Image**



Assay Class: Eukaryote Total RNA Nano  
 Data Path: C:\...ents and Settings\Bioanalyzer\2012-03-21\2012-03-21\_001.xad

Created: 3/21/2012 9:38:29 AM  
 Modified: 3/21/2012 10:05:18 AM

**Run Logbook**

Description	Number	Source	Category	Sub Category	Time	Time Zone	User	Host
Run ended on port 1 (Number of wells acquired: 13)		Instrument	Run		3/21/2012 10:02:17 AM	(GMT --07:00) Pacific Standard Time	UC Davis	D8XSMGH1
Run started on port 1 (File: C:\Documents and Settings\Bioanalyzer\2012-03-21\2012-03-21_001.xad)		Instrument	Run		3/21/2012 9:38:35 AM	(GMT --07:00) Pacific Standard Time	UC Davis	D8XSMGH1
Product Number : G2938B		Instrument	Run		3/21/2012 9:38:35 AM	(GMT --07:00) Pacific Standard Time	UC Davis	D8XSMGH1
Name :		Instrument	Run		3/21/2012 9:38:35 AM	(GMT --07:00) Pacific Standard Time	UC Davis	D8XSMGH1
Vendor : Agilent Technologies		Instrument	Run		3/21/2012 9:38:35 AM	(GMT --07:00) Pacific Standard Time	UC Davis	D8XSMGH1
Serial# : DE13701086		Instrument	Run		3/21/2012 9:38:35 AM	(GMT --07:00) Pacific Standard Time	UC Davis	D8XSMGH1
Firmware : C.01.069		Instrument	Run		3/21/2012 9:38:35 AM	(GMT --07:00) Pacific Standard Time	UC Davis	D8XSMGH1
Cartridge : Electrode		Instrument	Run		3/21/2012 9:38:35 AM	(GMT --07:00) Pacific Standard Time	UC Davis	D8XSMGH1