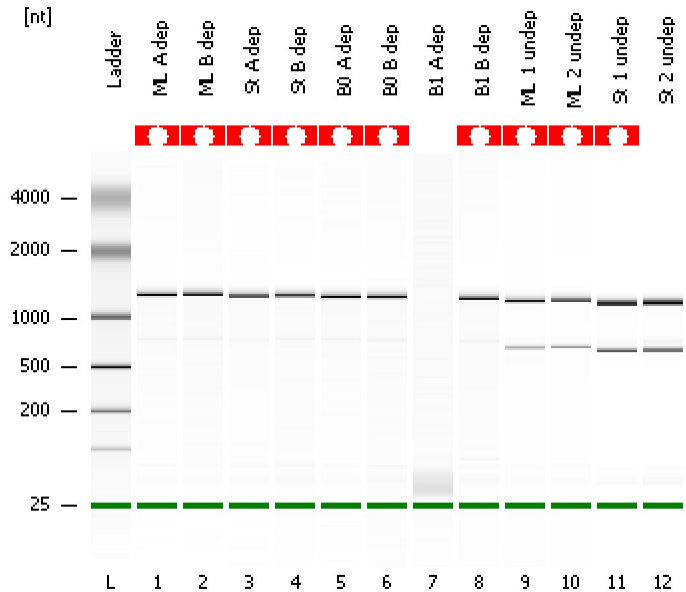


Assay Class: Prokaryote Total RNA Nano
Data Path: C:\...ents and Settings\Bioanalyzer\2012-03-21\2012-03-21_003.xad

Created: 3/21/2012 1:19:30 PM
Modified: 3/21/2012 1:43:20 PM

Electrophoresis File Run Summary



Instrument Information:

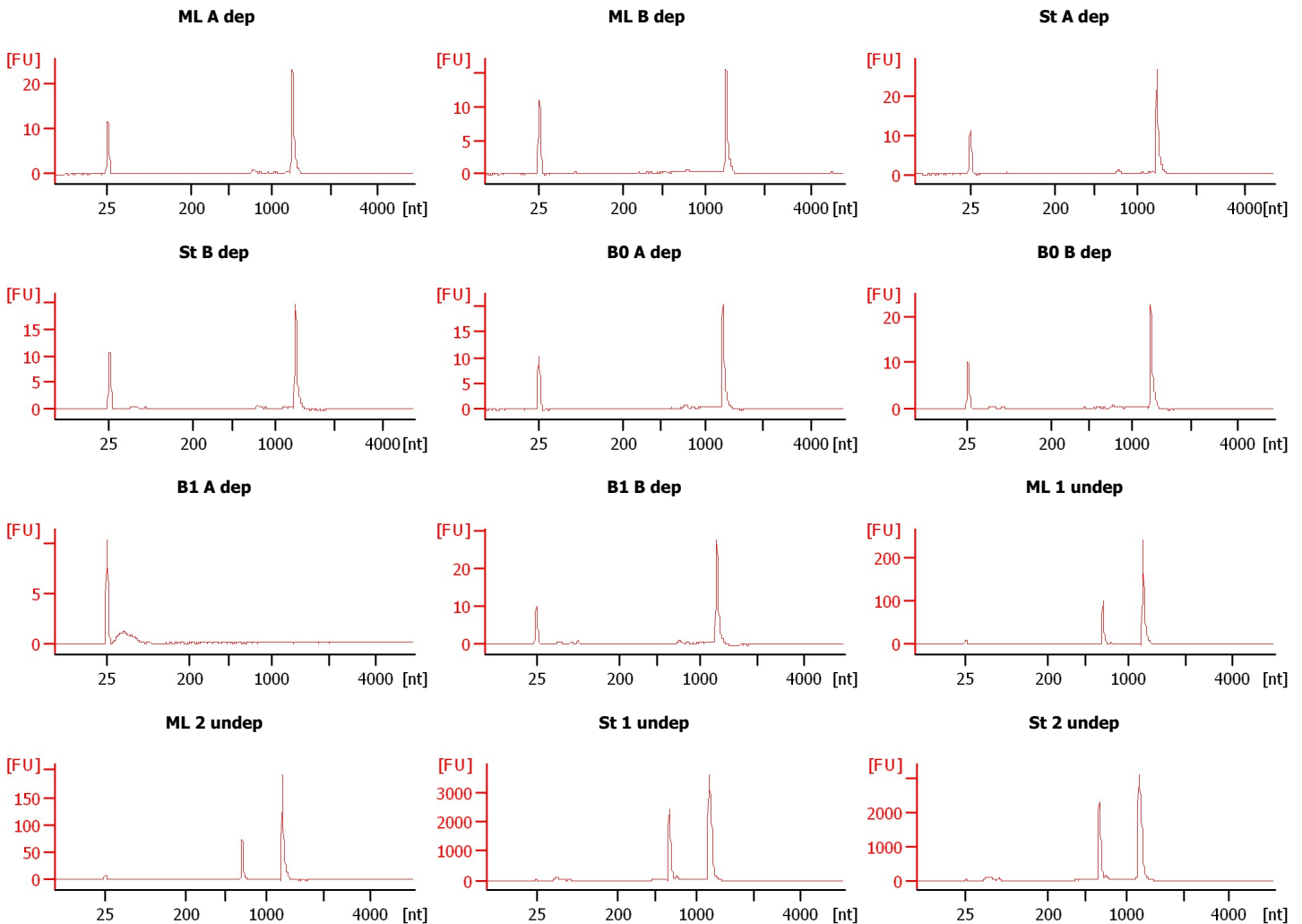
Instrument Name: DE13701086 Firmware: C.01.069
Serial#: DE13701086 Type: G2938B

Assay Information:

Assay Origin Path: C:\Program Files\Agilent\2100 bioanalyzer\2100 expert\assays\RNA\Prokaryote Total RNA Nano Series II.xsy
Assay Class: Prokaryote Total RNA Nano
Version: 2.5
Assay Comments: Total RNA Analysis ng sensitivity (Prokaryote)
© Copyright 2003 - 2009 Agilent Technologies, Inc.

Chip Information:

Chip Lot #:
Reagent Kit Lot #:
Chip Comments:



Assay Class: Prokaryote Total RNA Nano
Data Path: C:\...ents and Settings\Bioanalyzer\2012-03-21\2012-03-21_003.xad

Created: 3/21/2012 1:19:30 PM
Modified: 3/21/2012 1:43:20 PM

Electrophoresis File Run Summary (Chip Summary)

Sample Name	Sample Comment	Status	Result Label	Result Color
ML A dep		✓		
ML B dep		✓		
St A dep		✓		
St B dep		✓		
B0 A dep		✓		
B0 B dep		✓		
B1 A dep		✓		
B1 B dep		✓		
ML 1 undep		✓		
ML 2 undep		✓		
St 1 undep		✓		
St 2 undep		✓		
Ladder		✓		

Chip Lot #**Reagent Kit Lot #****Chip Comments :**

Assay Class: Prokaryote Total RNA Nano
Data Path: C:\...ents and Settings\Bioanalyzer\2012-03-21\2012-03-21_003.xad

Created: 3/21/2012 1:19:30 PM
Modified: 3/21/2012 1:43:20 PM

Electrophoresis Assay Details

General Analysis Settings

Number of Available Sample and Ladder Wells (Max.) : 13
Minimum Visible Range [s] : 17
Maximum Visible Range [s] : 70
Start Analysis Time Range [s] : 19
End Analysis Time Range [s] : 69
Ladder Concentration [ng/μl] : 150
Lower Marker Concentration [ng/μl] : 0
Upper Marker Concentration [ng/μl] : 0
Used Lower Marker for Quantitation
Standard Curve Fit is Logarithmic
Show Data Aligned to Lower Marker

Integrator Settings

Integration Start Time [s] : 19
Integration End Time [s] : 69
Slope Threshold : 0.6
Height Threshold [FU] : 0.5
Area Threshold : 0.2
Width Threshold [s] : 0.5
Baseline Plateau [s] : 6

Filter Settings

Filter Width [s] : 0.5
Polynomial Order : 4

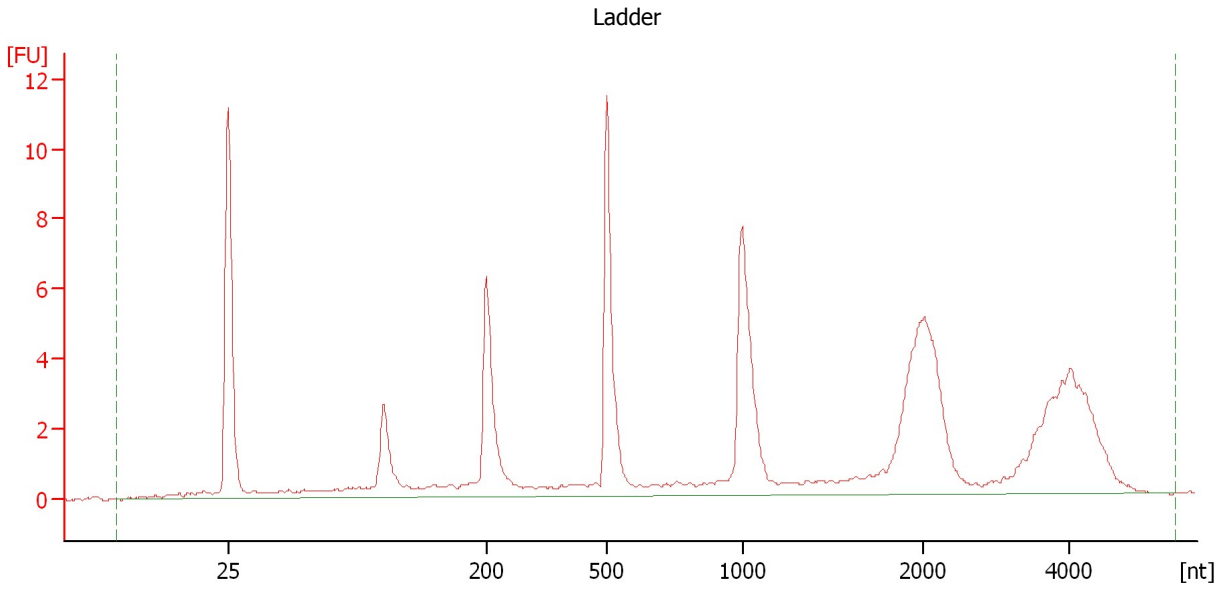
Ladder

Ladder Peak	Size
1	25
2	200
3	500
4	1000
5	2000
6	4000

Assay Class: Prokaryote Total RNA Nano
Data Path: C:\...ents and Settings\Bioanalyzer\2012-03-21\2012-03-21_003.xad

Created: 3/21/2012 1:19:30 PM
Modified: 3/21/2012 1:43:20 PM

Electropherogram Summary



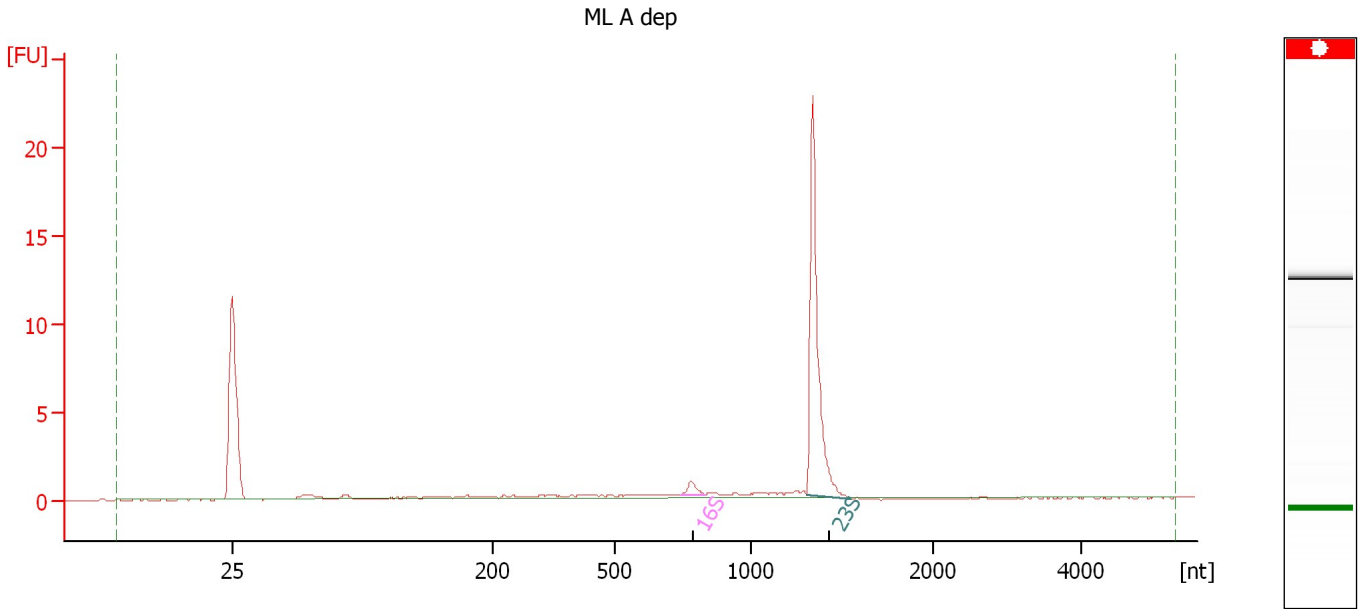
Overall Results for Ladder

RNA Area: 91.7 RNA Concentration: 150 ng/μl

Assay Class: Prokaryote Total RNA Nano
Data Path: C:\...ents and Settings\Bioanalyzer\2012-03-21\2012-03-21_003.xad

Created: 3/21/2012 1:19:30 PM
Modified: 3/21/2012 1:43:20 PM

Electropherogram Summary Continued ...



Overall Results for sample 1 : ML A dep

RNA Area: 27.5 rRNA Ratio [23s / 16s]: 26.0
RNA Concentration: 45 ng/μl RNA Integrity Number (RIN): N/A (B.02.08)

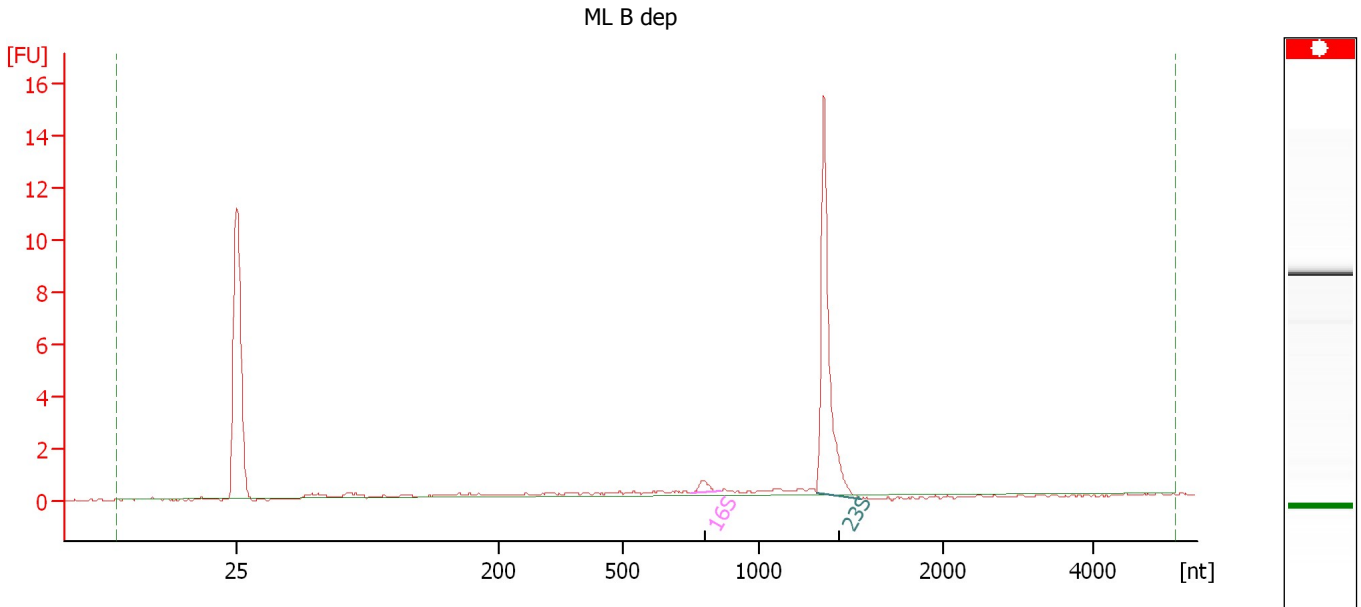
Fragment table for sample 1 : ML A dep

Name	Start Size [nt]	End Size [nt]	Area	% of total Area
16S	744	835	0.7	2.5
23S	1,304	1,549	17.9	65.1

Assay Class: Prokaryote Total RNA Nano
Data Path: C:\...ents and Settings\Bioanalyzer\2012-03-21\2012-03-21_003.xad

Created: 3/21/2012 1:19:30 PM
Modified: 3/21/2012 1:43:20 PM

Electropherogram Summary Continued ...



Overall Results for sample 2 : ML B dep

RNA Area: 21.4 rRNA Ratio [23s / 16s]: 23.5
RNA Concentration: 35 ng/μl RNA Integrity Number (RIN): N/A (B.02.08)

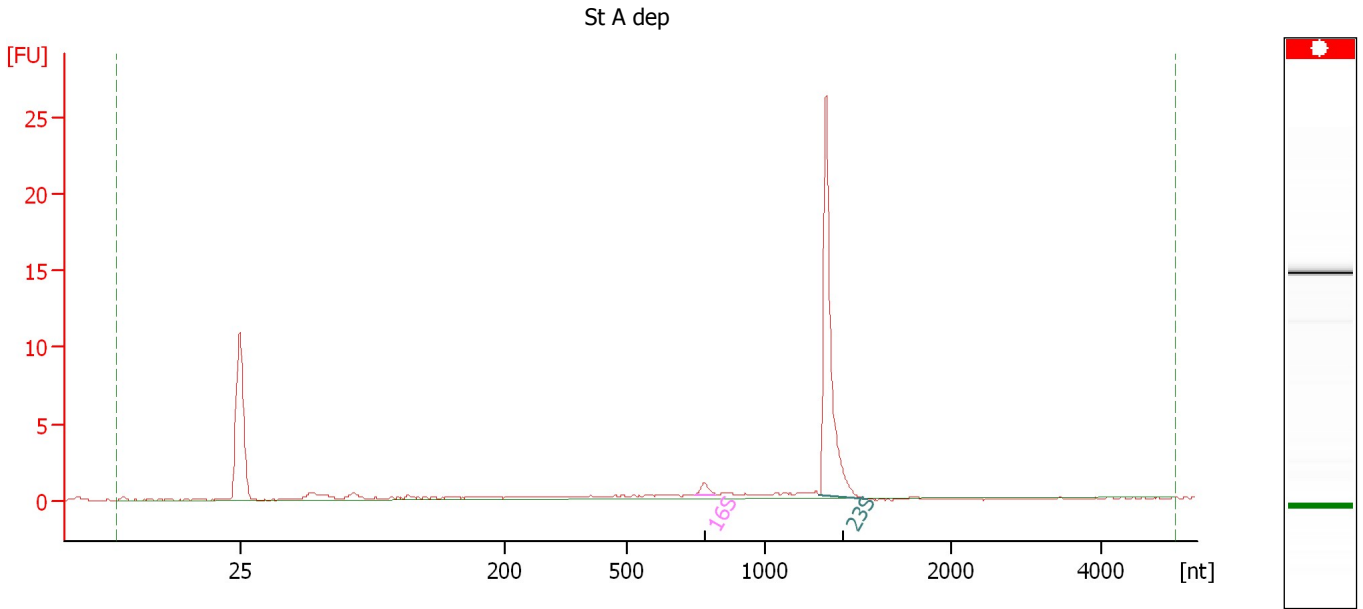
Fragment table for sample 2 : ML B dep

Name	Start Size [nt]	End Size [nt]	Area	% of total Area
16S	754	864	0.5	2.5
23S	1,313	1,551	12.3	57.6

Assay Class: Prokaryote Total RNA Nano
Data Path: C:\...ents and Settings\Bioanalyzer\2012-03-21\2012-03-21_003.xad

Created: 3/21/2012 1:19:30 PM
Modified: 3/21/2012 1:43:20 PM

Electropherogram Summary Continued ...



Overall Results for sample 3 : St A dep

RNA Area: 36.5 rRNA Ratio [23s / 16s]: 27.5
RNA Concentration: 60 ng/μl RNA Integrity Number (RIN): N/A (B.02.08)

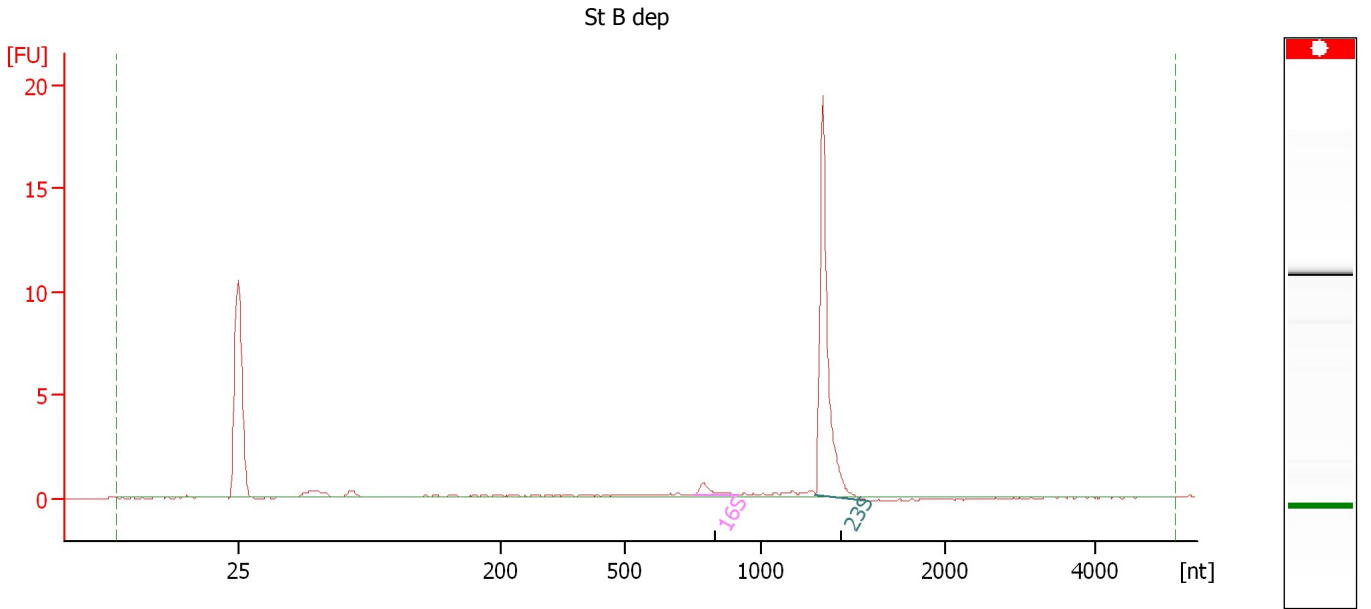
Fragment table for sample 3 : St A dep

Name	Start Size [nt]	End Size [nt]	Area	% of total Area
16S	741	818	0.7	2.1
23S	1,289	1,548	20.6	56.6

Assay Class: Prokaryote Total RNA Nano
Data Path: C:\...ents and Settings\Bioanalyzer\2012-03-21\2012-03-21_003.xad

Created: 3/21/2012 1:19:30 PM
Modified: 3/21/2012 1:43:20 PM

Electropherogram Summary Continued ...



Overall Results for sample 4 : St B dep

RNA Area: 22.4 rRNA Ratio [23s / 16s]: 18.3
RNA Concentration: 37 ng/μl RNA Integrity Number (RIN): N/A (B.02.08)

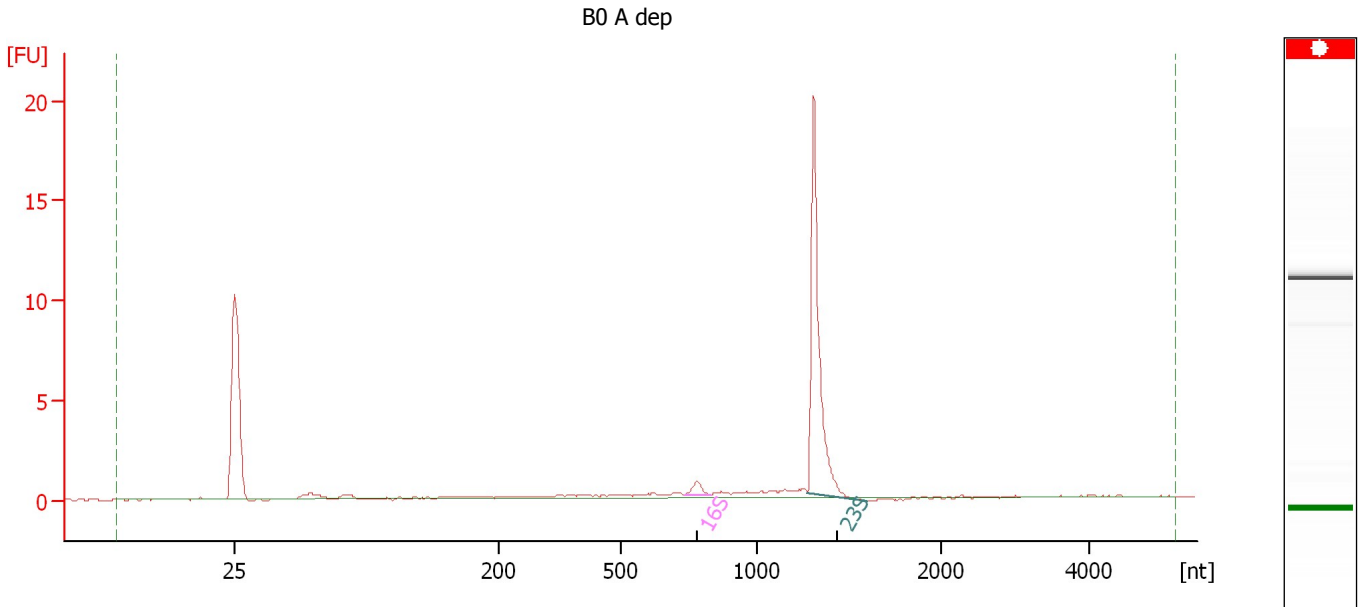
Fragment table for sample 4 : St B dep

Name	Start Size [nt]	End Size [nt]	Area	% of total Area
16S	751	919	0.8	3.7
23S	1,296	1,584	15.3	68.4

Assay Class: Prokaryote Total RNA Nano
Data Path: C:\...ents and Settings\Bioanalyzer\2012-03-21\2012-03-21_003.xad

Created: 3/21/2012 1:19:30 PM
Modified: 3/21/2012 1:43:20 PM

Electropherogram Summary Continued ...



Overall Results for sample 5 : B0 A dep

RNA Area: 24.8 rRNA Ratio [23s / 16s]: 23.8
RNA Concentration: 40 ng/μl RNA Integrity Number (RIN): N/A (B.02.08)

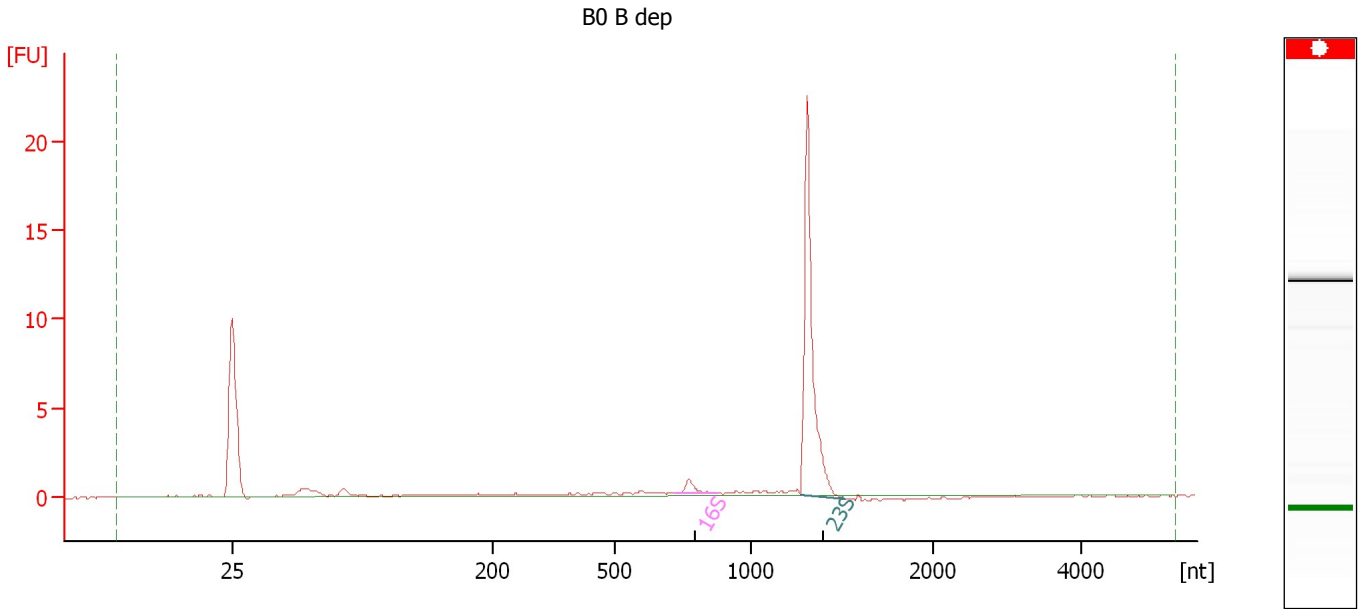
Fragment table for sample 5 : B0 A dep

Name	Start Size [nt]	End Size [nt]	Area	% of total Area
16S	734	828	0.7	2.7
23S	1,273	1,598	15.8	64.0

Assay Class: Prokaryote Total RNA Nano
Data Path: C:\...ents and Settings\Bioanalyzer\2012-03-21\2012-03-21_003.xad

Created: 3/21/2012 1:19:30 PM
Modified: 3/21/2012 1:43:20 PM

Electropherogram Summary Continued ...



Overall Results for sample 6 : B0 B dep

RNA Area: 30.7 rRNA Ratio [23s / 16s]: 20.7
RNA Concentration: 50 ng/μl RNA Integrity Number (RIN): N/A (B.02.08)

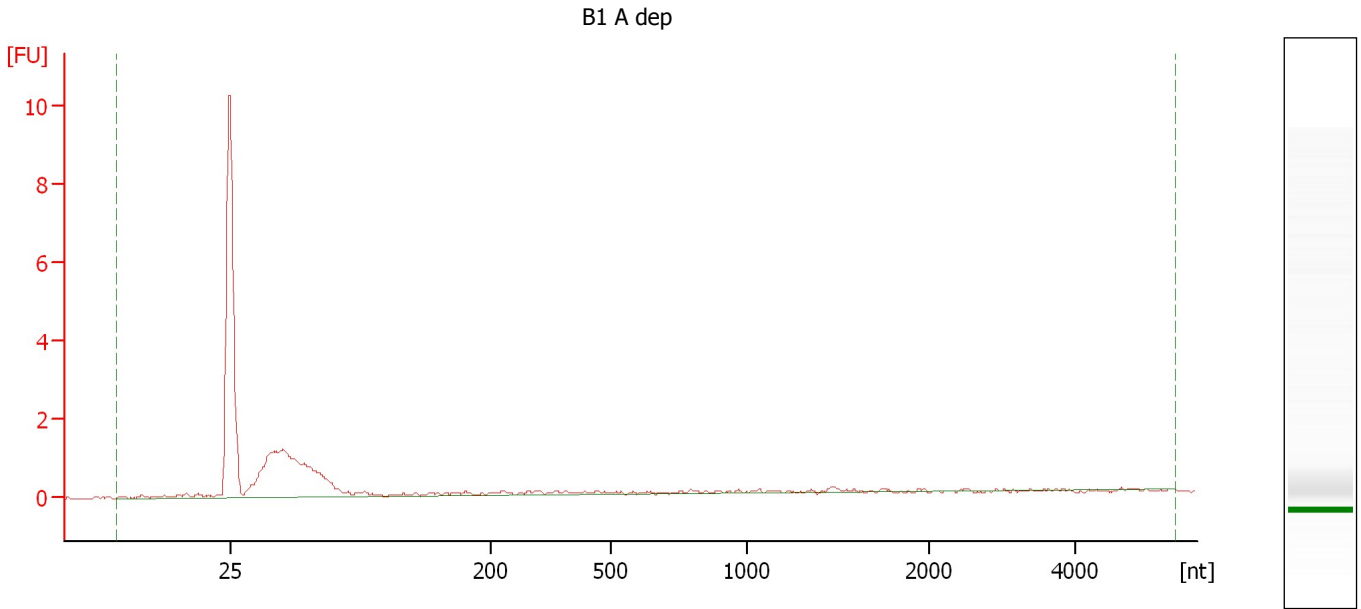
Fragment table for sample 6 : B0 B dep

Name	Start Size [nt]	End Size [nt]	Area	% of total Area
16S	720	878	0.9	2.9
23S	1,274	1,519	18.6	60.5

Assay Class: Prokaryote Total RNA Nano
Data Path: C:\...ents and Settings\Bioanalyzer\2012-03-21\2012-03-21_003.xad

Created: 3/21/2012 1:19:30 PM
Modified: 3/21/2012 1:43:20 PM

Electropherogram Summary Continued ...



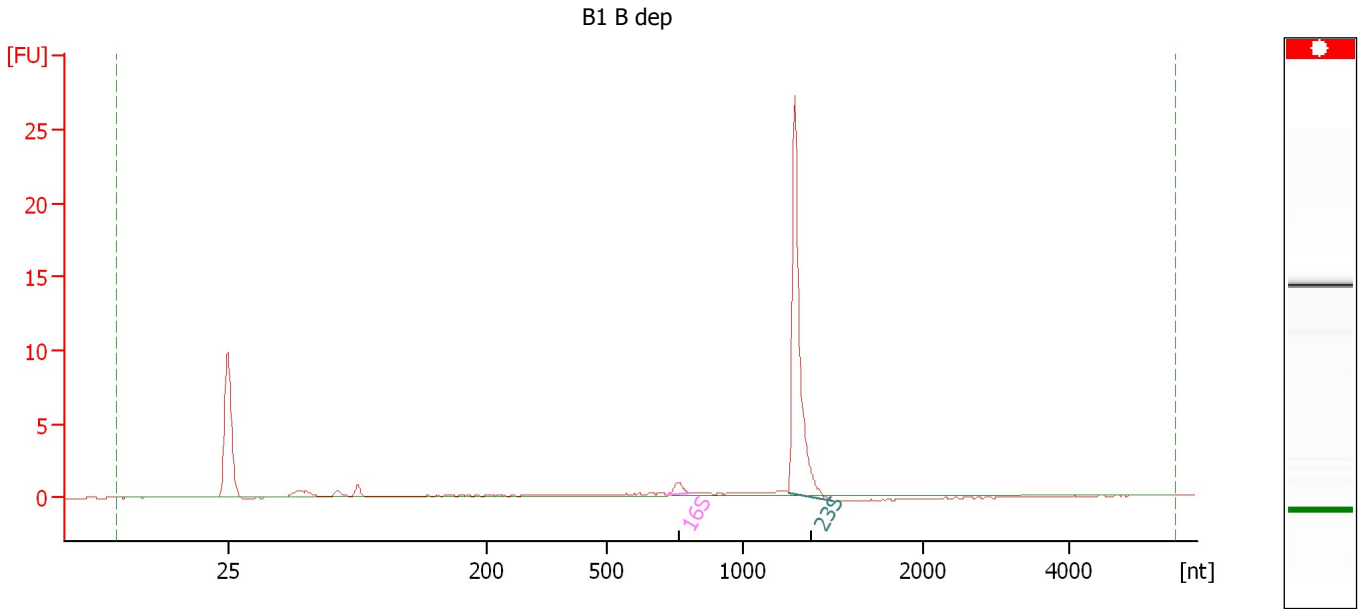
Overall Results for sample 7 : B1 A dep

RNA Area:	14.5	rRNA Ratio [23s / 16s]:	0.0
RNA Concentration:	24 ng/μl	RNA Integrity Number (RIN):	1.2 (B.02.08)

Assay Class: Prokaryote Total RNA Nano
Data Path: C:\...ents and Settings\Bioanalyzer\2012-03-21\2012-03-21_003.xad

Created: 3/21/2012 1:19:30 PM
Modified: 3/21/2012 1:43:20 PM

Electropherogram Summary Continued ...



Overall Results for sample 8 : B1 B dep

RNA Area: 32.4 rRNA Ratio [23s / 16s]: 27.3
RNA Concentration: 53 ng/μl RNA Integrity Number (RIN): N/A (B.02.08)

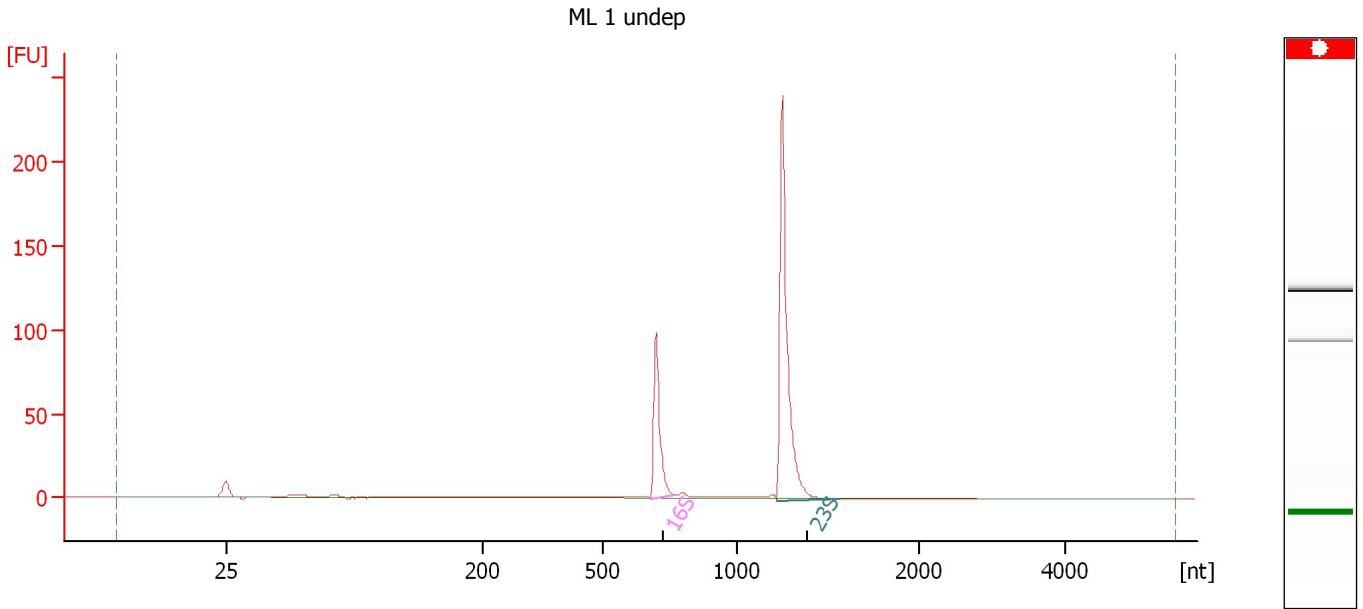
Fragment table for sample 8 : B1 B dep

Name	Start Size [nt]	End Size [nt]	Area	% of total Area
16S	722	809	0.8	2.5
23S	1,252	1,505	21.9	67.6

Assay Class: Prokaryote Total RNA Nano
Data Path: C:\...ents and Settings\Bioanalyzer\2012-03-21\2012-03-21_003.xad

Created: 3/21/2012 1:19:30 PM
Modified: 3/21/2012 1:43:20 PM

Electropherogram Summary Continued ...



Overall Results for sample 9 : ML 1 undep

RNA Area: 284.8 rRNA Ratio [23s / 16s]: 2.6
RNA Concentration: 466 ng/μl RNA Integrity Number (RIN): N/A (B.02.08)

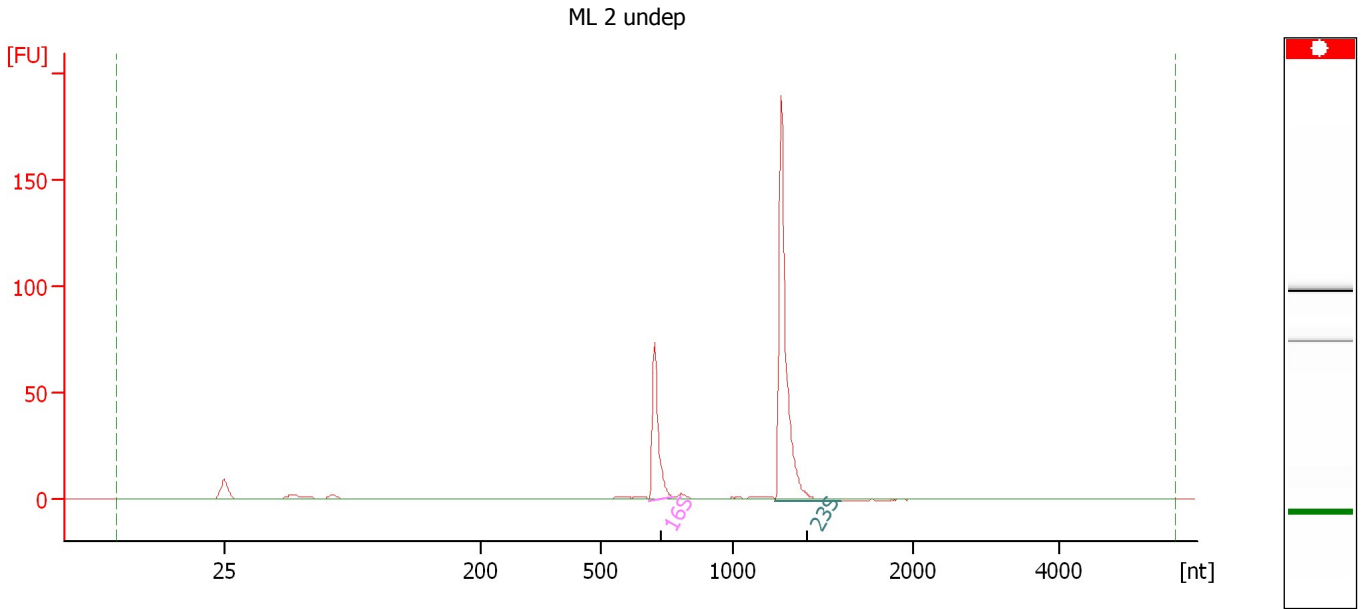
Fragment table for sample 9 : ML 1 undep

Name	Start Size [nt]	End Size [nt]	Area	% of total Area
16S	673	768	71.9	25.2
23S	1,212	1,560	188.8	66.3

Assay Class: Prokaryote Total RNA Nano
Data Path: C:\...ents and Settings\Bioanalyzer\2012-03-21\2012-03-21_003.xad

Created: 3/21/2012 1:19:30 PM
Modified: 3/21/2012 1:43:20 PM

Electropherogram Summary Continued ...



Overall Results for sample 10 : ML 2 undep

RNA Area: 223.4 rRNA Ratio [23s / 16s]: 2.7
RNA Concentration: 366 ng/μl RNA Integrity Number (RIN): N/A (B.02.08)

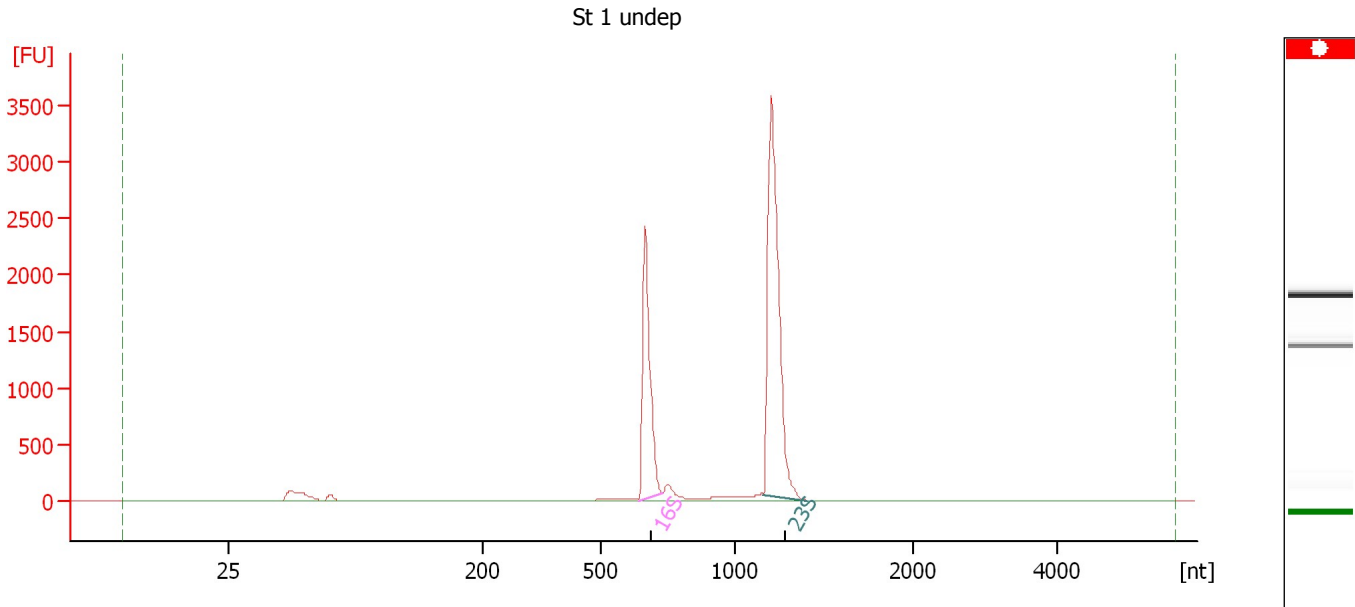
Fragment table for sample 10 : ML 2 undep

Name	Start Size [nt]	End Size [nt]	Area	% of total Area
16S	683	775	55.1	24.7
23S	1,230	1,592	146.4	65.5

Assay Class: Prokaryote Total RNA Nano
 Data Path: C:\...ents and Settings\Bioanalyzer\2012-03-21\2012-03-21_003.xad

Created: 3/21/2012 1:19:30 PM
 Modified: 3/21/2012 1:43:20 PM

Electropherogram Summary Continued ...



Overall Results for sample 11 : St 1 undep

RNA Area: 7,537.5 rRNA Ratio [23s / 16s]: 1.9
 RNA Concentration: 12,332 ng/µl RNA Integrity Number (RIN): N/A (B.02.08)

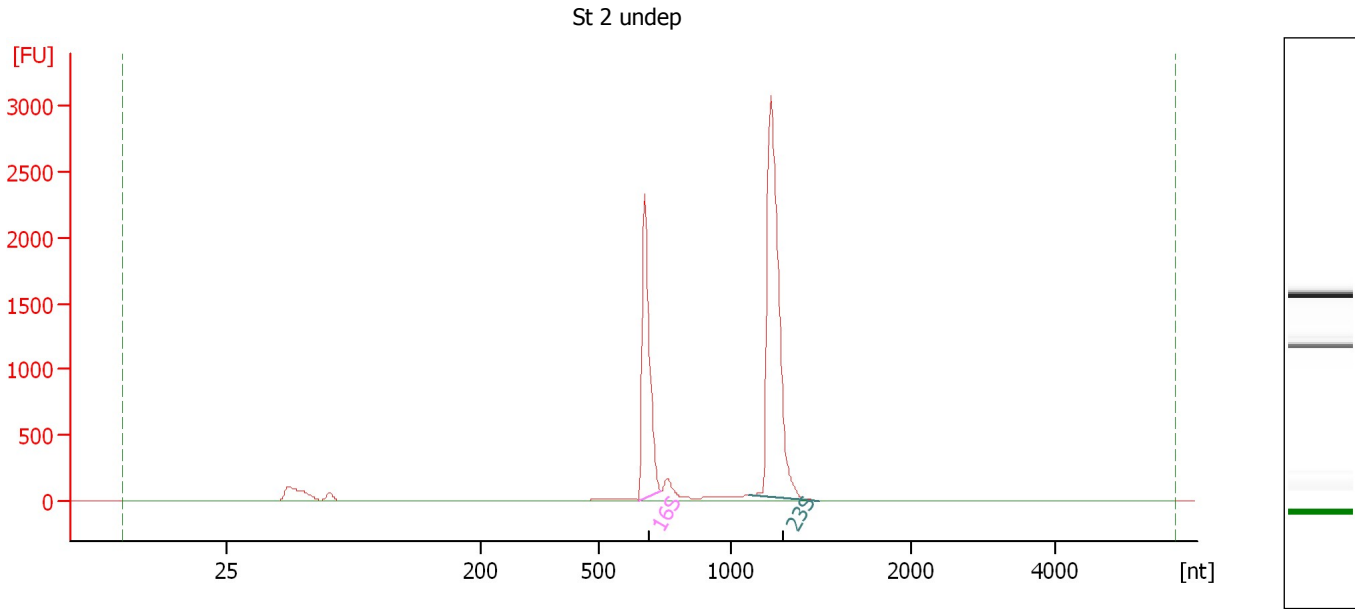
Fragment table for sample 11 : St 1 undep

Name	Start Size [nt]	End Size [nt]	Area	% of total Area
16S	642	730	2,156.9	28.6
23S	1,165	1,403	4,056.5	53.8

Assay Class: Prokaryote Total RNA Nano
Data Path: C:\...ents and Settings\Bioanalyzer\2012-03-21\2012-03-21_003.xad

Created: 3/21/2012 1:19:30 PM
Modified: 3/21/2012 1:43:20 PM

Electropherogram Summary Continued ...



Overall Results for sample 12 : St 2 undep

RNA Area: 7,266.2 rRNA Ratio [23s / 16s]: 1.8
RNA Concentration: 11,889 ng/µl RNA Integrity Number (RIN): 10 (B.02.08)

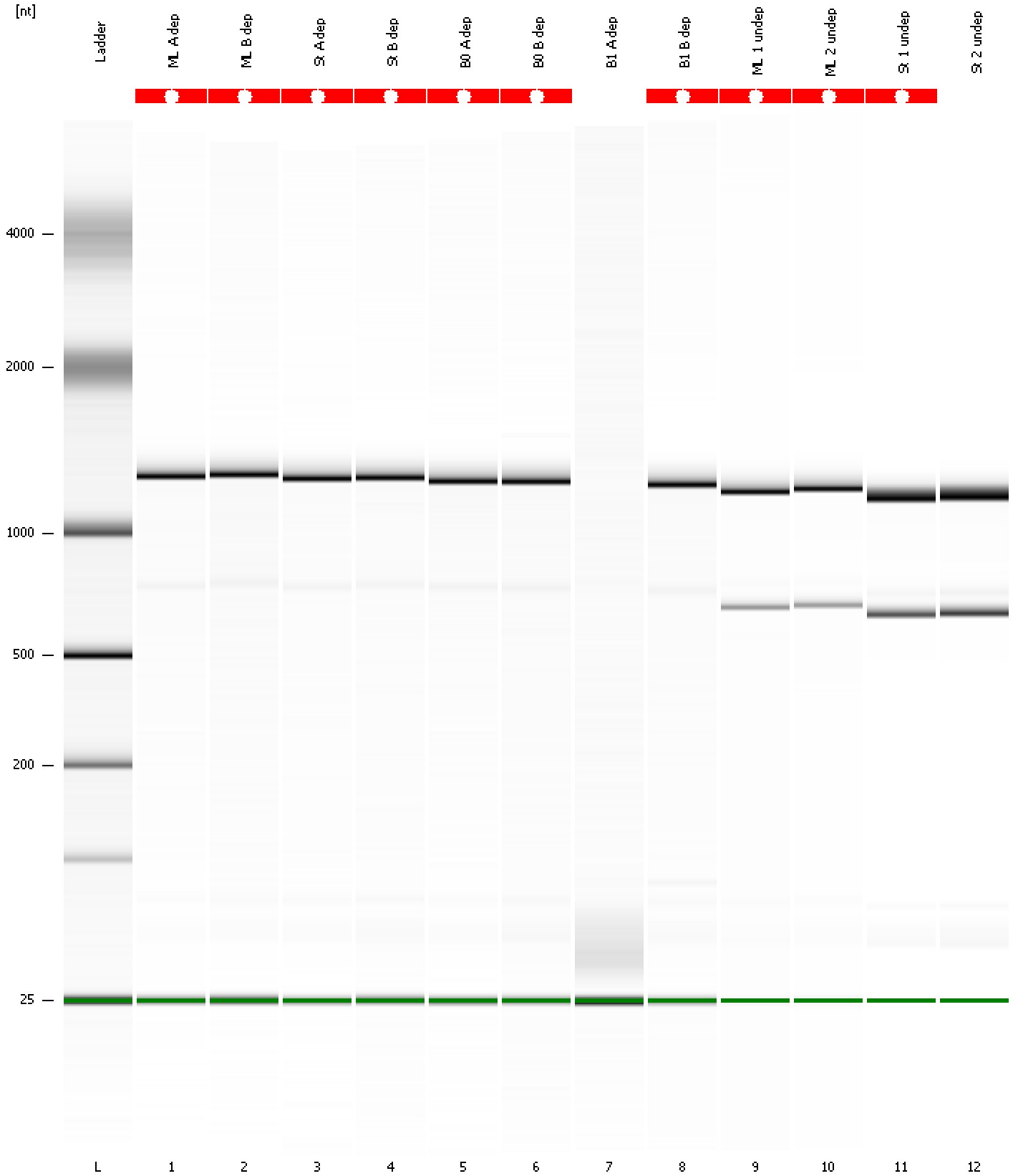
Fragment table for sample 12 : St 2 undep

Name	Start Size [nt]	End Size [nt]	Area	% of total Area
16S	645	734	2,072.7	28.5
23S	1,094	1,493	3,745.1	51.5

Assay Class: Prokaryote Total RNA Nano
Data Path: C:\...ents and Settings\Bioanalyzer\2012-03-21\2012-03-21_003.xad

Created: 3/21/2012 1:19:30 PM
Modified: 3/21/2012 1:43:20 PM

Gel Image



Assay Class: Prokaryote Total RNA Nano
 Data Path: C:\...ents and Settings\Bioanalyzer\2012-03-21\2012-03-21_003.xad

Created: 3/21/2012 1:19:30 PM
 Modified: 3/21/2012 1:43:20 PM

Run Logbook

Description	Number	Source	Category	Sub Category	Time	Time Zone	User	Host
Run ended on port 1 (Number of wells acquired: 13)		Instrument	Run		3/21/2012 1:43:18 PM	(GMT --07:00) Pacific Standard Time	UC Davis	D8XSMGH1
Run started on port 1 (File: C:\Documents and Settings\Bioanalyzer\2012-03-21\2012-03-21_003.xad)		Instrument	Run		3/21/2012 1:19:36 PM	(GMT --07:00) Pacific Standard Time	UC Davis	D8XSMGH1
Product Number : G2938B		Instrument	Run		3/21/2012 1:19:36 PM	(GMT --07:00) Pacific Standard Time	UC Davis	D8XSMGH1
Name :		Instrument	Run		3/21/2012 1:19:36 PM	(GMT --07:00) Pacific Standard Time	UC Davis	D8XSMGH1
Vendor : Agilent Technologies		Instrument	Run		3/21/2012 1:19:36 PM	(GMT --07:00) Pacific Standard Time	UC Davis	D8XSMGH1
Serial# : DE13701086		Instrument	Run		3/21/2012 1:19:36 PM	(GMT --07:00) Pacific Standard Time	UC Davis	D8XSMGH1
Firmware : C.01.069		Instrument	Run		3/21/2012 1:19:36 PM	(GMT --07:00) Pacific Standard Time	UC Davis	D8XSMGH1
Cartridge : Electrode		Instrument	Run		3/21/2012 1:19:36 PM	(GMT --07:00) Pacific Standard Time	UC Davis	D8XSMGH1