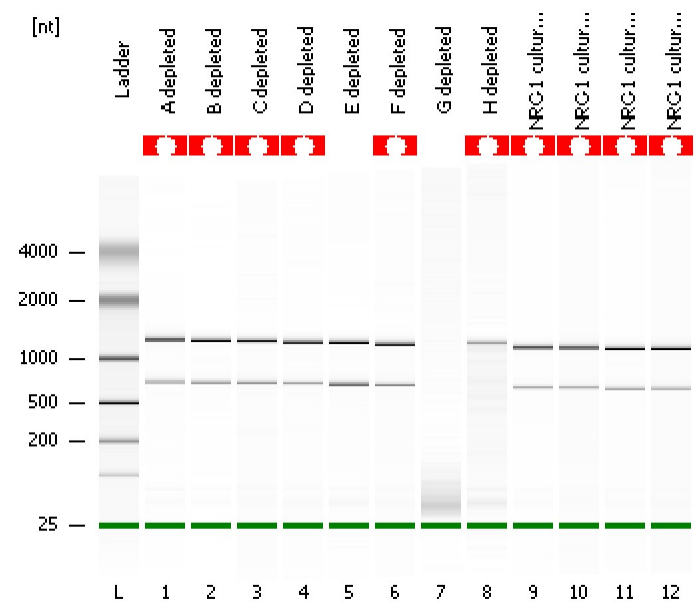


Assay Class: Prokaryote Total RNA Nano  
Data Path: C:\...ents and Settings\Bioanalyzer\2012-03-21\2012-03-21\_006.xad

Created: 3/21/2012 4:17:14 PM  
Modified: 3/21/2012 4:41:04 PM

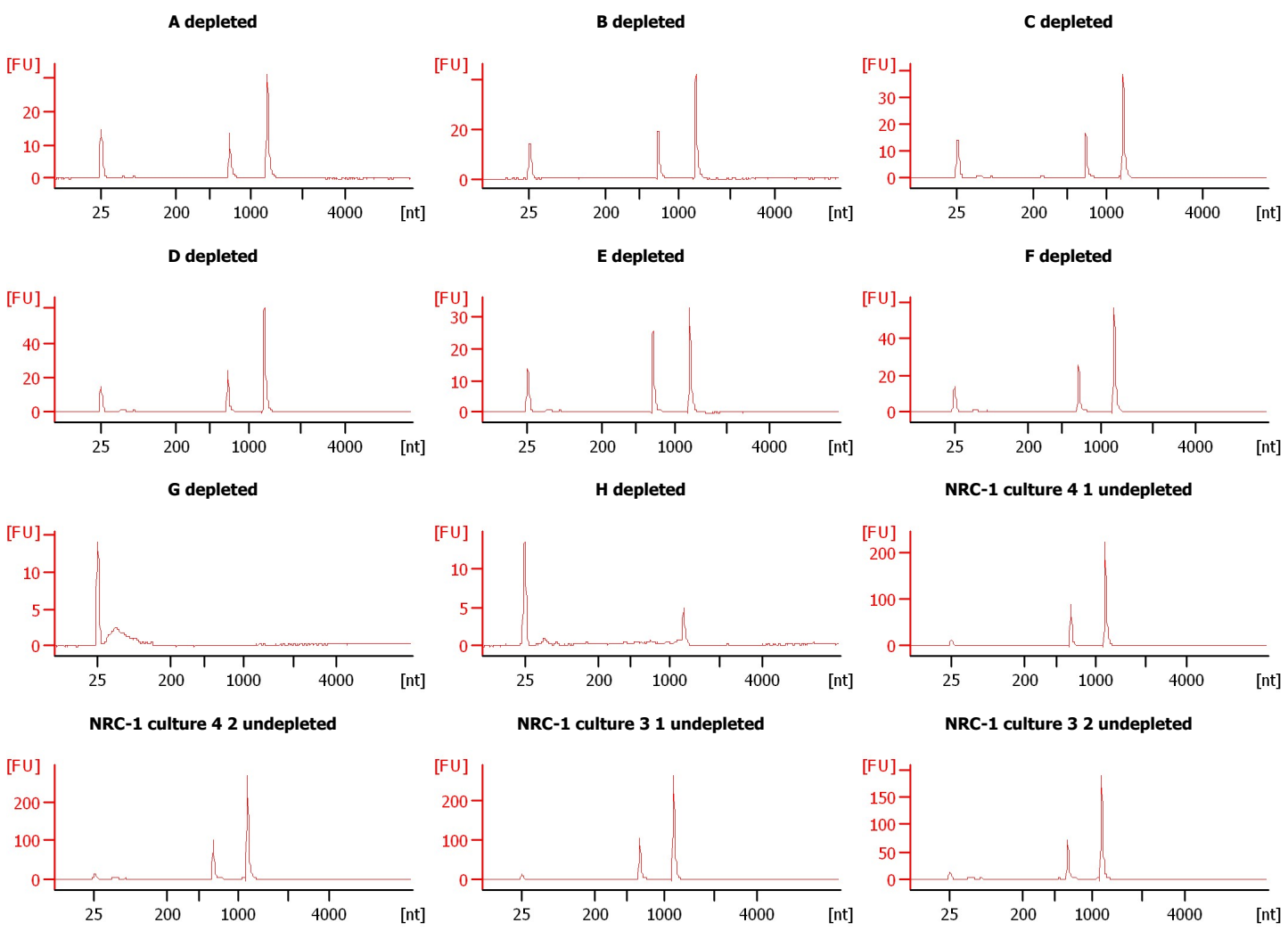
### Electrophoresis File Run Summary



**Instrument Information:**  
Instrument Name: DE13701086      Firmware: C.01.069  
Serial#: DE13701086      Type: G2938B

**Assay Information:**  
Assay Origin Path: C:\Program Files\Agilent\2100 bioanalyzer\2100 expert\assays\RNA\Prokaryote Total RNA Nano Series II.xsy  
Assay Class: Prokaryote Total RNA Nano  
Version: 2.5  
Assay Comments: Total RNA Analysis ng sensitivity (Prokaryote)  
© Copyright 2003 - 2009 Agilent Technologies, Inc.

**Chip Information:**  
Chip Lot #:      Reagent Kit Lot #:      Chip Comments:



Assay Class: Prokaryote Total RNA Nano  
Data Path: C:\...ents and Settings\Bioanalyzer\2012-03-21\2012-03-21\_006.xad

Created: 3/21/2012 4:17:14 PM  
Modified: 3/21/2012 4:41:04 PM

**Electrophoresis File Run Summary (Chip Summary)**

Sample Name	Sample Comment	Status	Result Label	Result Color
A depleted		✓		
B depleted		✓		
C depleted		✓		
D depleted		✓		
E depleted		✓		
F depleted		✓		
G depleted		✓		
H depleted		✓		
NRC-1 culture 4 1 undepleted		✓		
NRC-1 culture 4 2 undepleted		✓		
NRC-1 culture 3 1 undepleted		✓		
NRC-1 culture 3 2 undepleted		✓		
Ladder		✓		

**Chip Lot #****Reagent Kit Lot #****Chip Comments :**

Assay Class: Prokaryote Total RNA Nano  
Data Path: C:\...ents and Settings\Bioanalyzer\2012-03-21\2012-03-21\_006.xad

Created: 3/21/2012 4:17:14 PM  
Modified: 3/21/2012 4:41:04 PM

**Electrophoresis Assay Details**

**General Analysis Settings**

Number of Available Sample and Ladder Wells (Max.) : 13  
Minimum Visible Range [s] : 17  
Maximum Visible Range [s] : 70  
Start Analysis Time Range [s] : 19  
End Analysis Time Range [s] : 69  
Ladder Concentration [ng/μl] : 150  
Lower Marker Concentration [ng/μl] : 0  
Upper Marker Concentration [ng/μl] : 0  
Used Lower Marker for Quantitation  
Standard Curve Fit is Logarithmic  
Show Data Aligned to Lower Marker

**Integrator Settings**

Integration Start Time [s] : 19  
Integration End Time [s] : 69  
Slope Threshold : 0.6  
Height Threshold [FU] : 0.5  
Area Threshold : 0.2  
Width Threshold [s] : 0.5  
Baseline Plateau [s] : 6

**Filter Settings**

Filter Width [s] : 0.5  
Polynomial Order : 4

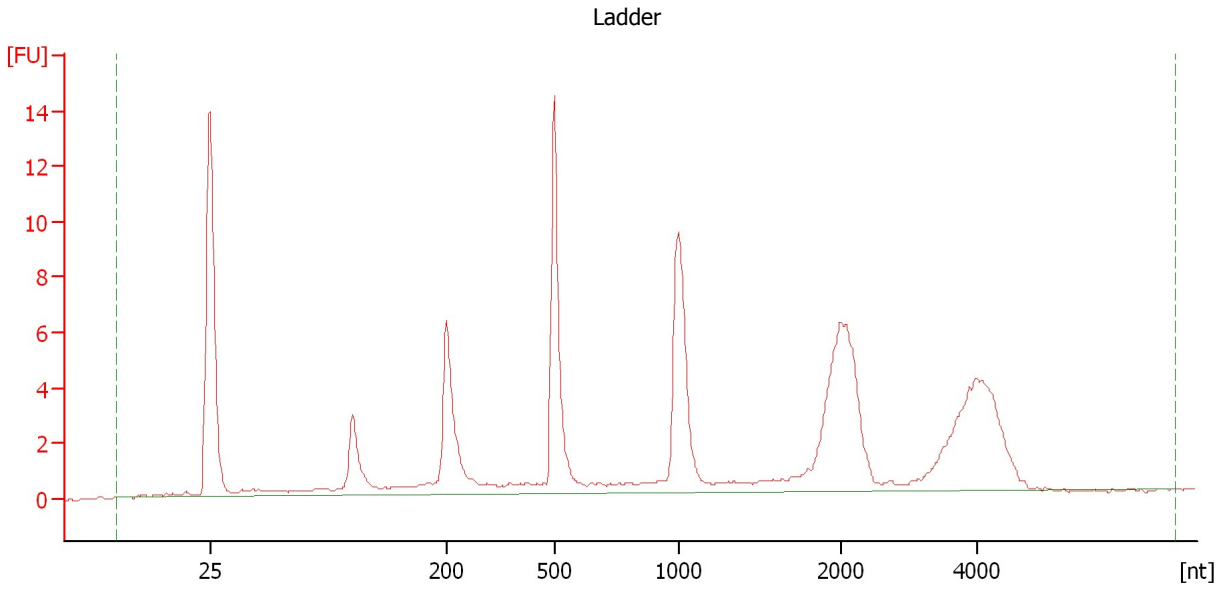
**Ladder**

Ladder Peak	Size
1	25
2	200
3	500
4	1000
5	2000
6	4000

Assay Class: Prokaryote Total RNA Nano  
Data Path: C:\...ents and Settings\Bioanalyzer\2012-03-21\2012-03-21\_006.xad

Created: 3/21/2012 4:17:14 PM  
Modified: 3/21/2012 4:41:04 PM

**Electropherogram Summary**



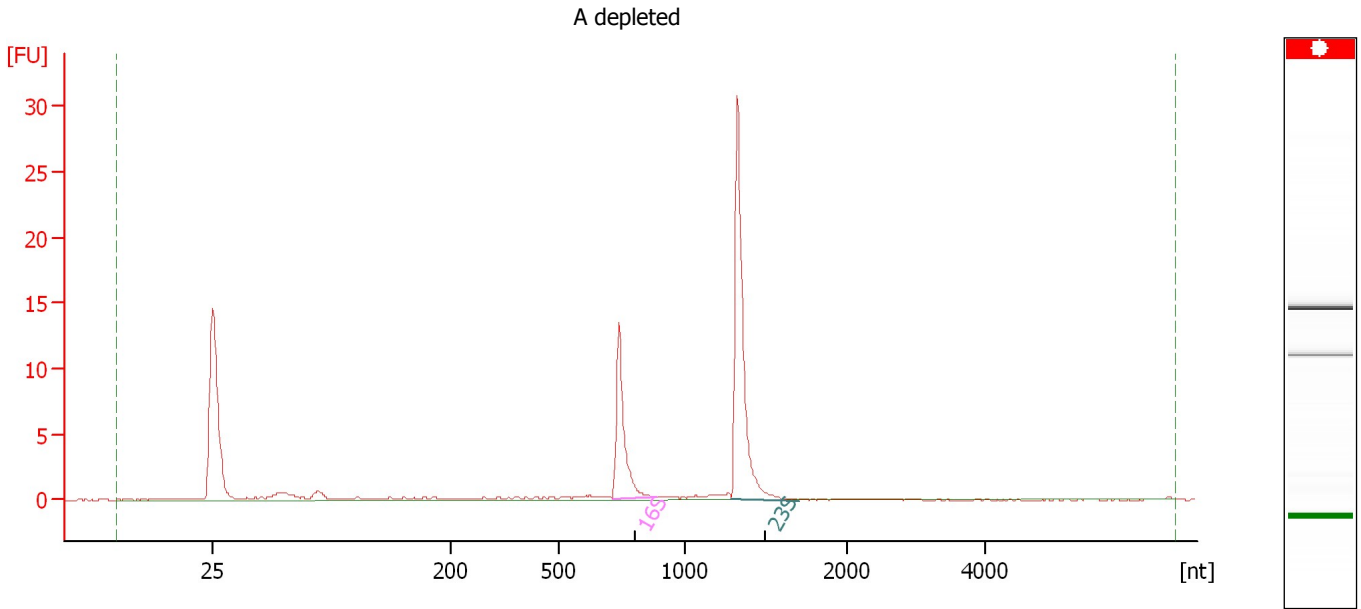
**Overall Results for Ladder**

RNA Area: 100.0                      RNA Concentration: 150 ng/μl

Assay Class: Prokaryote Total RNA Nano  
Data Path: C:\...ents and Settings\Bioanalyzer\2012-03-21\2012-03-21\_006.xad

Created: 3/21/2012 4:17:14 PM  
Modified: 3/21/2012 4:41:04 PM

**Electropherogram Summary Continued ...**



**Overall Results for sample 1 : A depleted**

RNA Area: 50.7 rRNA Ratio [23s / 16s]: 2.1  
RNA Concentration: 76 ng/μl RNA Integrity Number (RIN): N/A (B.02.08)

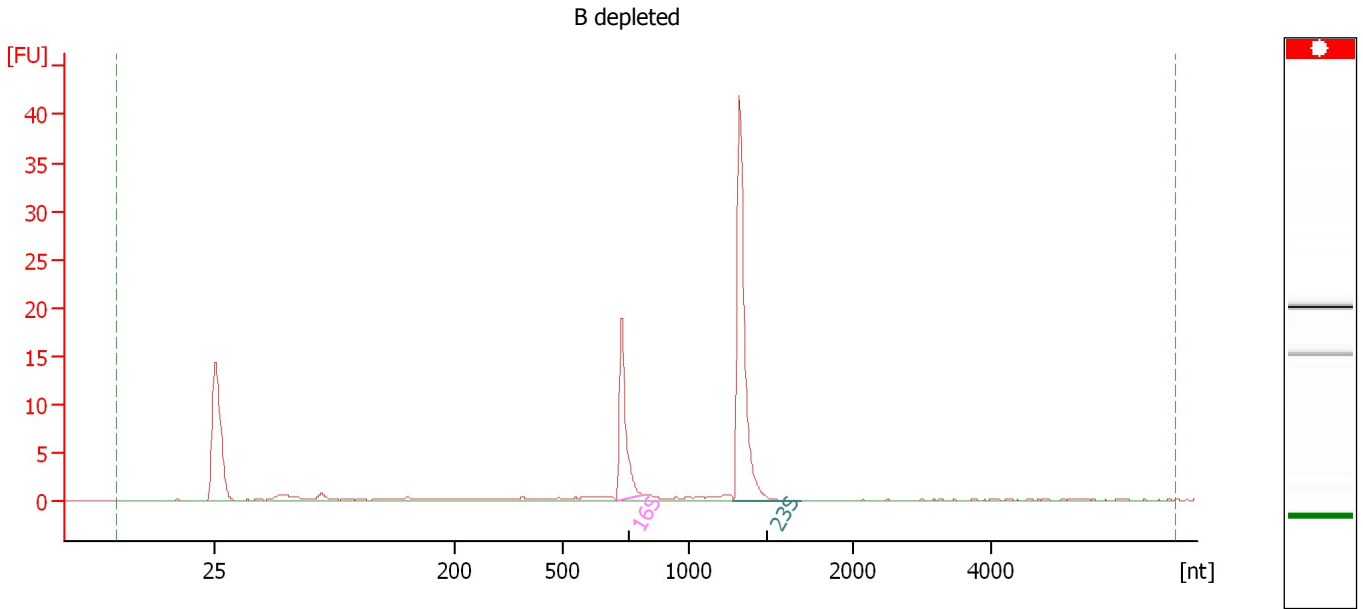
**Fragment table for sample 1 : A depleted**

Name	Start Size [nt]	End Size [nt]	Area	% of total Area
16S	714	893	12.7	24.9
23S	1,289	1,701	26.1	51.4

Assay Class: Prokaryote Total RNA Nano  
Data Path: C:\...ents and Settings\Bioanalyzer\2012-03-21\2012-03-21\_006.xad

Created: 3/21/2012 4:17:14 PM  
Modified: 3/21/2012 4:41:04 PM

**Electropherogram Summary Continued ...**



**Overall Results for sample 2 : B depleted**

RNA Area: 64.8                      rRNA Ratio [23s / 16s]: 2.1  
RNA Concentration: 97 ng/μl              RNA Integrity Number (RIN): N/A (B.02.08)

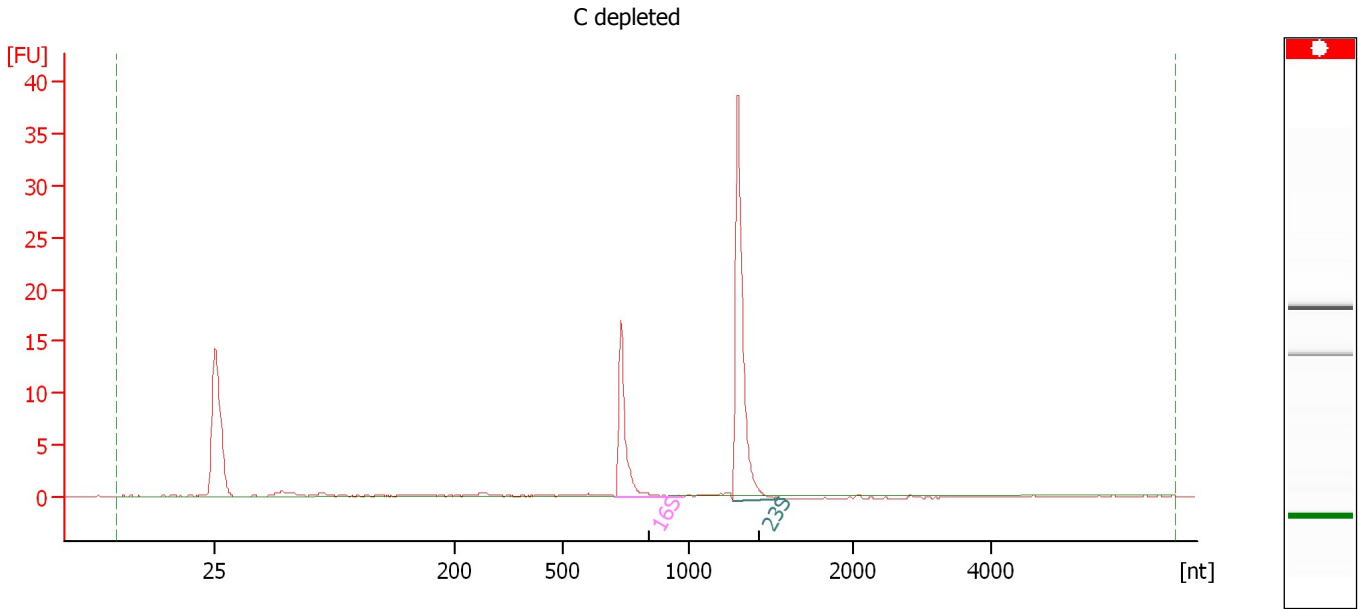
**Fragment table for sample 2 : B depleted**

Name	Start Size [nt]	End Size [nt]	Area	% of total Area
16S	711	822	15.5	23.9
23S	1,276	1,692	33.0	51.0

Assay Class: Prokaryote Total RNA Nano  
Data Path: C:\...ents and Settings\Bioanalyzer\2012-03-21\2012-03-21\_006.xad

Created: 3/21/2012 4:17:14 PM  
Modified: 3/21/2012 4:41:04 PM

**Electropherogram Summary Continued ...**



**Overall Results for sample 3 : C depleted**

RNA Area: 48.8 rRNA Ratio [23s / 16s]: 2.1  
RNA Concentration: 73 ng/μl RNA Integrity Number (RIN): N/A (B.02.08)

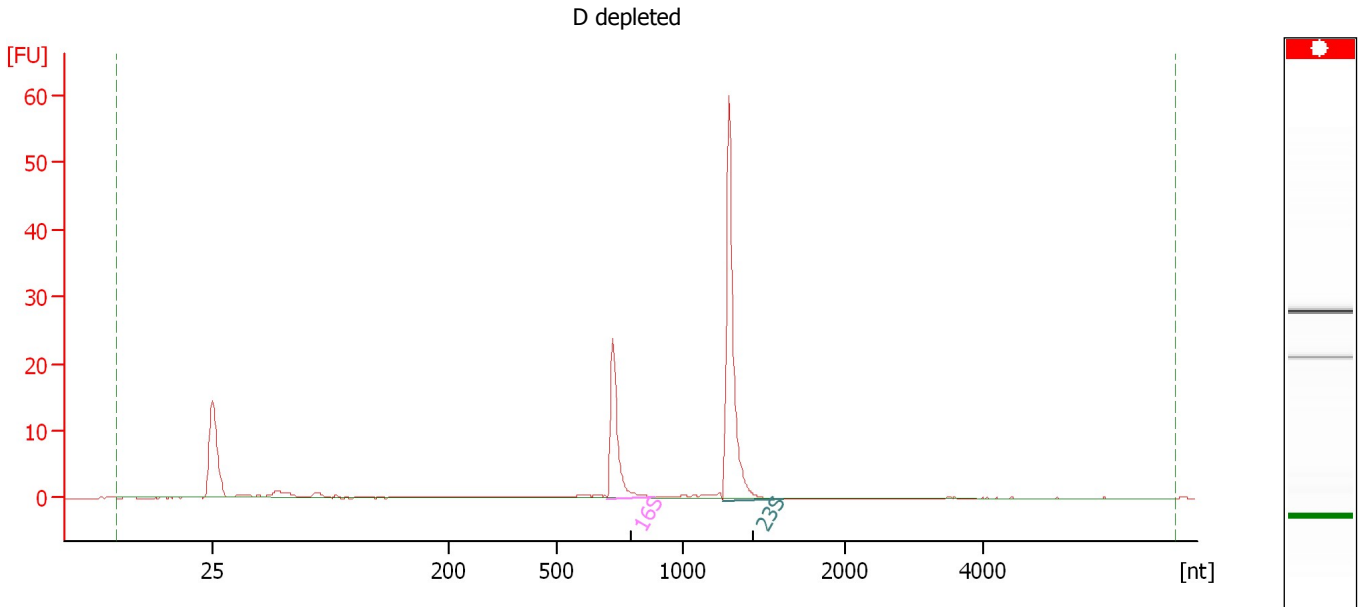
**Fragment table for sample 3 : C depleted**

Name	Start Size [nt]	End Size [nt]	Area	% of total Area
16S	707	980	14.6	30.0
23S	1,269	1,588	31.2	64.0

Assay Class: Prokaryote Total RNA Nano  
Data Path: C:\...ents and Settings\Bioanalyzer\2012-03-21\2012-03-21\_006.xad

Created: 3/21/2012 4:17:14 PM  
Modified: 3/21/2012 4:41:04 PM

**Electropherogram Summary Continued ...**



**Overall Results for sample 4 : D depleted**

RNA Area: 81.9                      rRNA Ratio [23s / 16s]: 2.3  
RNA Concentration: 123 ng/μl                      RNA Integrity Number (RIN): N/A (B.02.08)

**Fragment table for sample 4 : D depleted**

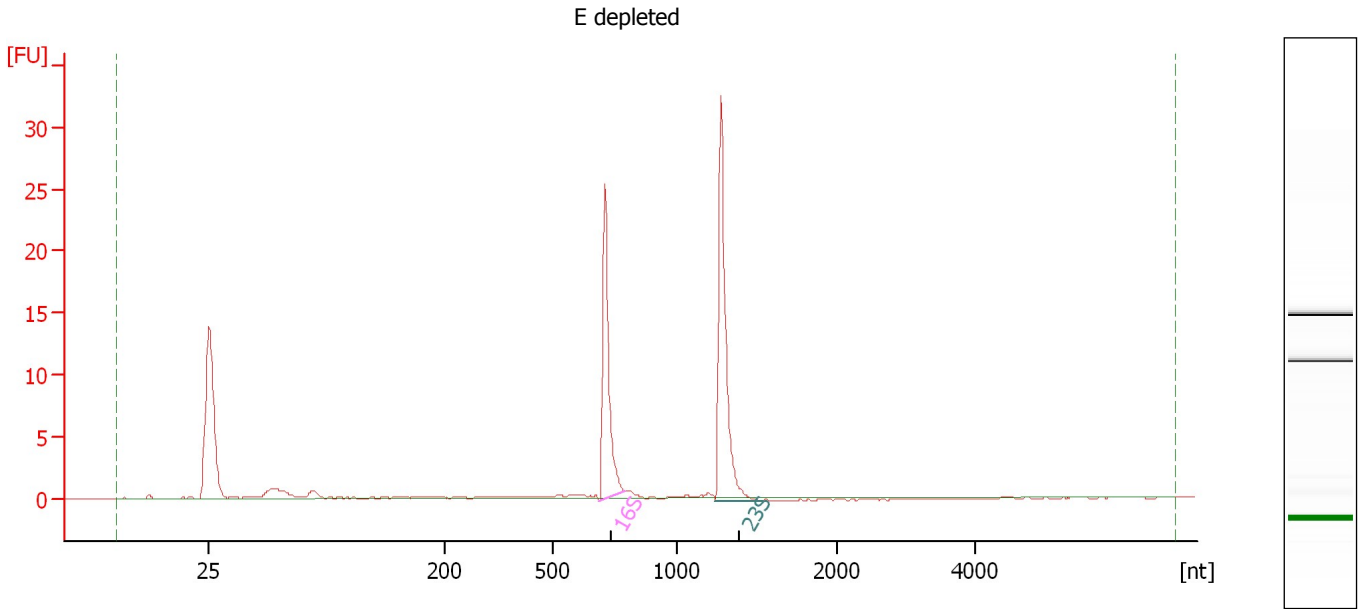
Name	Start Size [nt]	End Size [nt]	Area	% of total Area
16S	700	893	20.7	25.2
23S	1,250	1,623	47.6	58.2



Assay Class: Prokaryote Total RNA Nano  
Data Path: C:\...ents and Settings\Bioanalyzer\2012-03-21\2012-03-21\_006.xad

Created: 3/21/2012 4:17:14 PM  
Modified: 3/21/2012 4:41:04 PM

**Electropherogram Summary Continued ...**



**Overall Results for sample 5 : E depleted**

RNA Area: 57.6                      rRNA Ratio [23s / 16s]: 1.3  
RNA Concentration: 86 ng/μl              RNA Integrity Number (RIN): 10 (B.02.08)

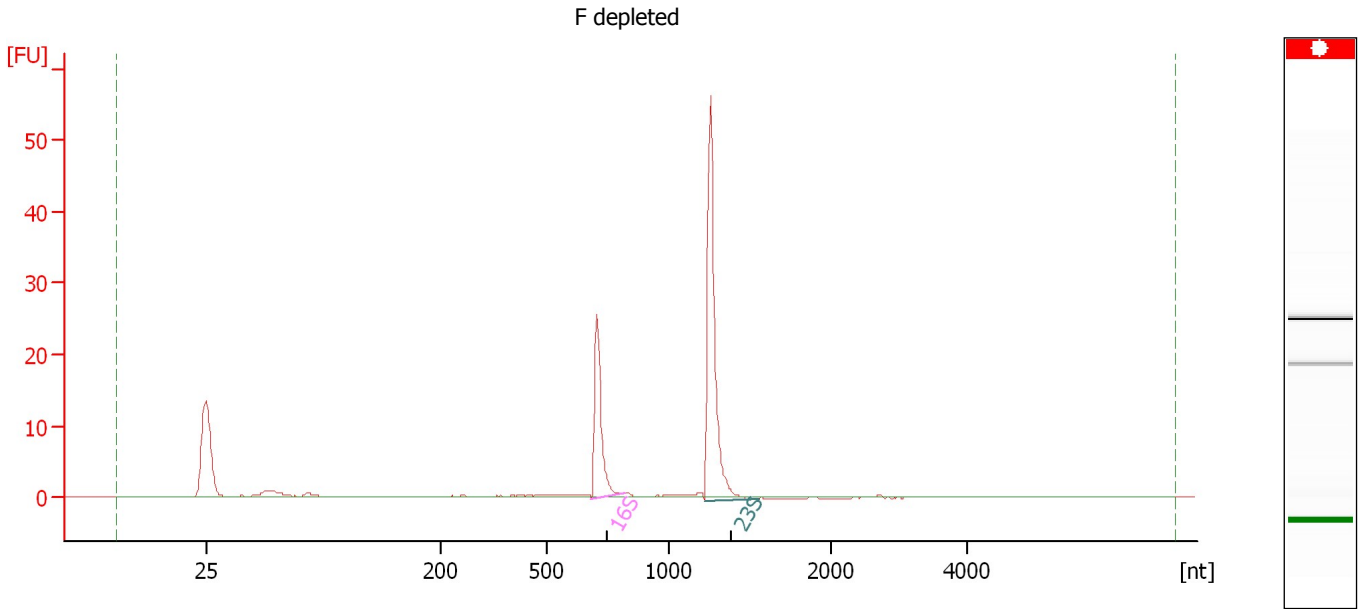
**Fragment table for sample 5 : E depleted**

Name	Start Size [nt]	End Size [nt]	Area	% of total Area
16S	688	796	20.4	35.4
23S	1,243	1,533	25.5	44.4

Assay Class: Prokaryote Total RNA Nano  
Data Path: C:\...ents and Settings\Bioanalyzer\2012-03-21\2012-03-21\_006.xad

Created: 3/21/2012 4:17:14 PM  
Modified: 3/21/2012 4:41:04 PM

**Electropherogram Summary Continued ...**



**Overall Results for sample 6 : F depleted**

RNA Area: 78.0                      rRNA Ratio [23s / 16s]: 2.1  
RNA Concentration: 117 ng/μl                      RNA Integrity Number (RIN): N/A (B.02.08)

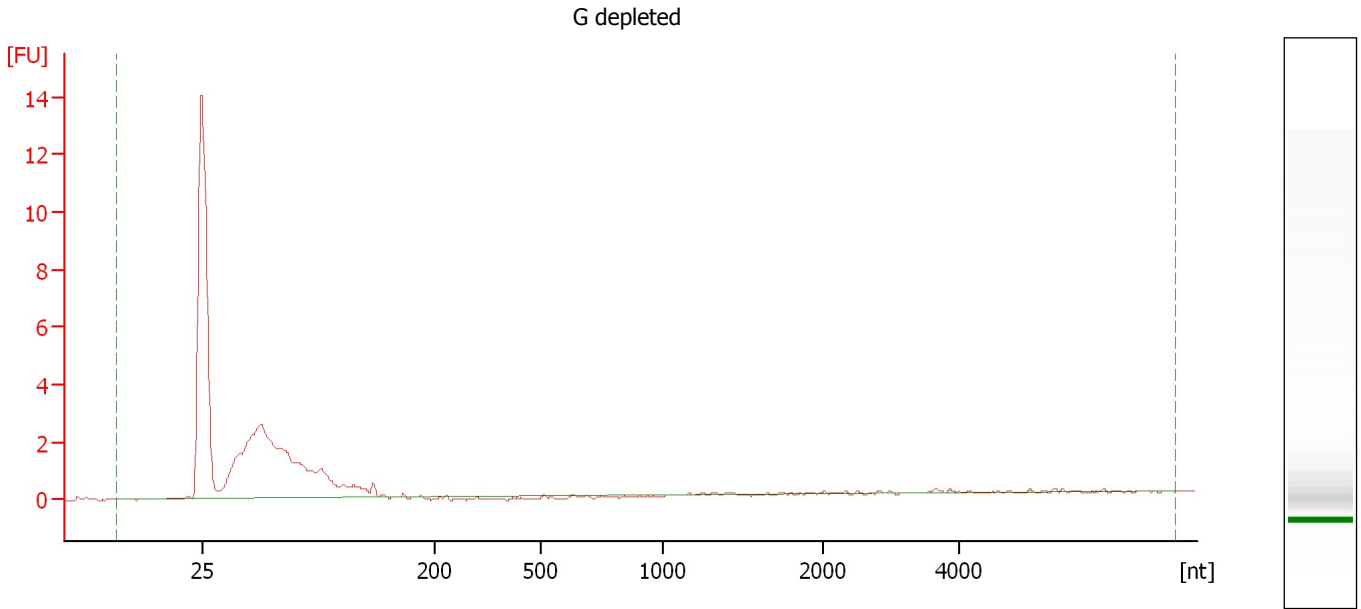
**Fragment table for sample 6 : F depleted**

Name	Start Size [nt]	End Size [nt]	Area	% of total Area
16S	681	820	21.0	26.9
23S	1,216	1,548	44.8	57.4

Assay Class: Prokaryote Total RNA Nano  
Data Path: C:\...ents and Settings\Bioanalyzer\2012-03-21\2012-03-21\_006.xad

Created: 3/21/2012 4:17:14 PM  
Modified: 3/21/2012 4:41:04 PM

**Electropherogram Summary Continued ...**



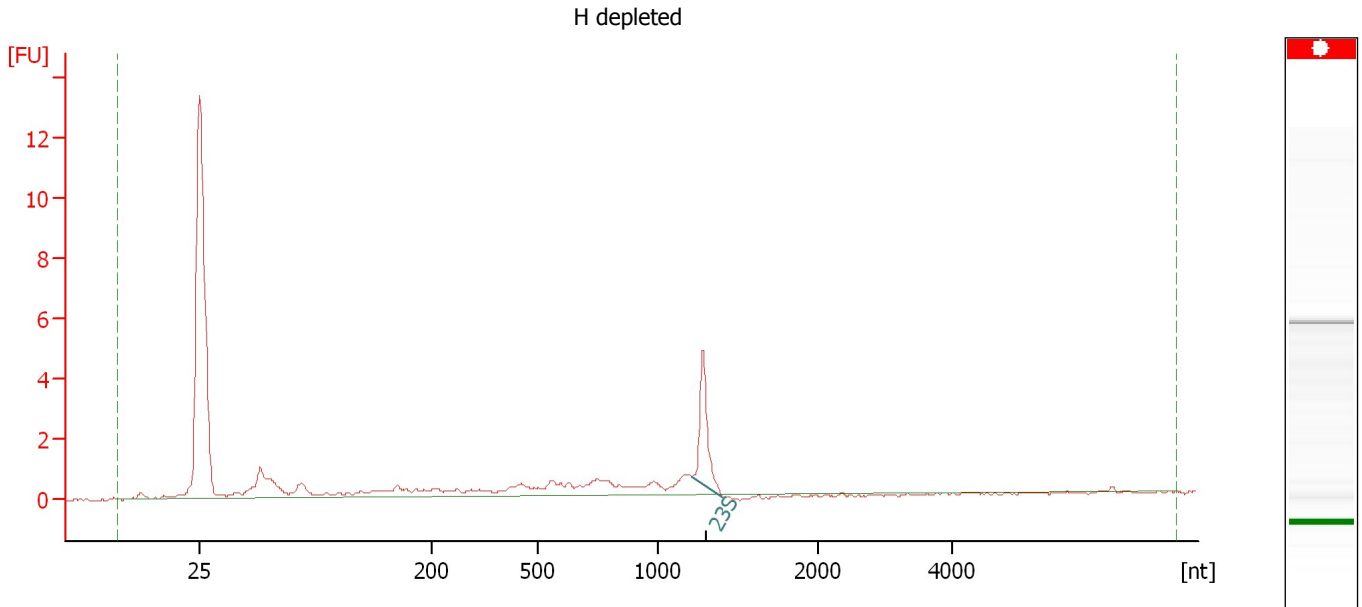
**Overall Results for sample 7 : G depleted**

RNA Area:	30.7	rRNA Ratio [23s / 16s]:	0.0
RNA Concentration:	46 ng/μl	RNA Integrity Number (RIN):	1.8 (B.02.08)

Assay Class: Prokaryote Total RNA Nano  
Data Path: C:\...ents and Settings\Bioanalyzer\2012-03-21\2012-03-21\_006.xad

Created: 3/21/2012 4:17:14 PM  
Modified: 3/21/2012 4:41:04 PM

**Electropherogram Summary Continued ...**



**Overall Results for sample 8 : H depleted**

RNA Area: 22.7                      rRNA Ratio [23s / 16s]: 0.0  
RNA Concentration: 34 ng/μl              RNA Integrity Number (RIN): N/A (B.02.08)

**Fragment table for sample 8 : H depleted**

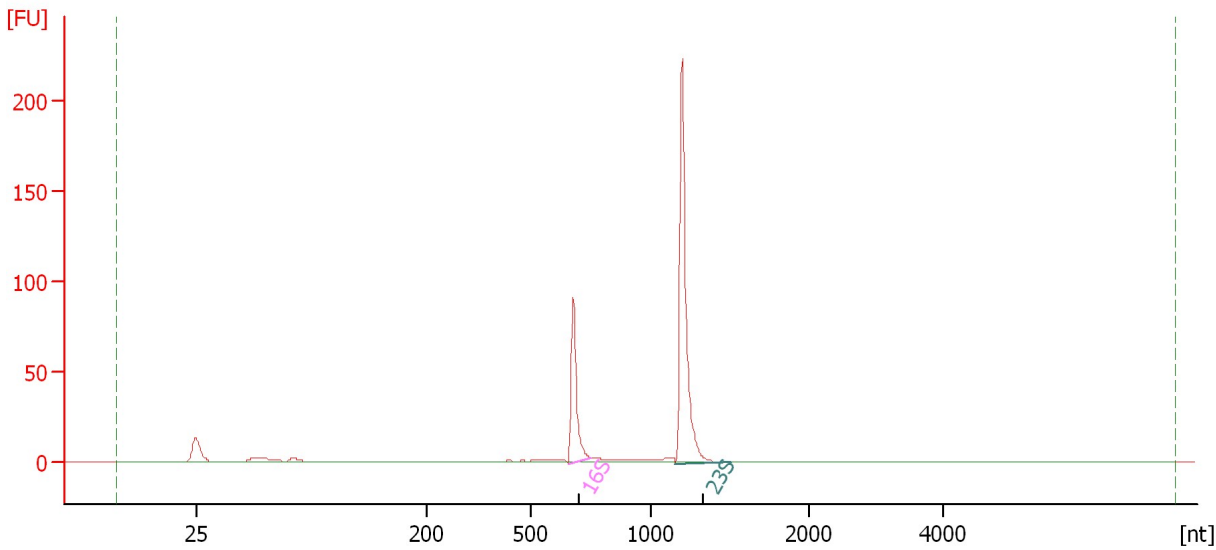
Name	Start Size [nt]	End Size [nt]	Area	% of total Area
23S	1,209	1,404	3.9	17.2

Assay Class: Prokaryote Total RNA Nano  
Data Path: C:\...ents and Settings\Bioanalyzer\2012-03-21\2012-03-21\_006.xad

Created: 3/21/2012 4:17:14 PM  
Modified: 3/21/2012 4:41:04 PM

**Electropherogram Summary Continued ...**

NRC-1 culture 4 1 undepleted



**Overall Results for sample 9 : NRC-1 culture 4 1 undepleted**

RNA Area: 275.2 rRNA Ratio [23s / 16s]: 2.5  
RNA Concentration: 413 ng/μl RNA Integrity Number (RIN): N/A (B.02.08)

**Fragment table for sample 9 : NRC-1 culture 4 1 undepleted**

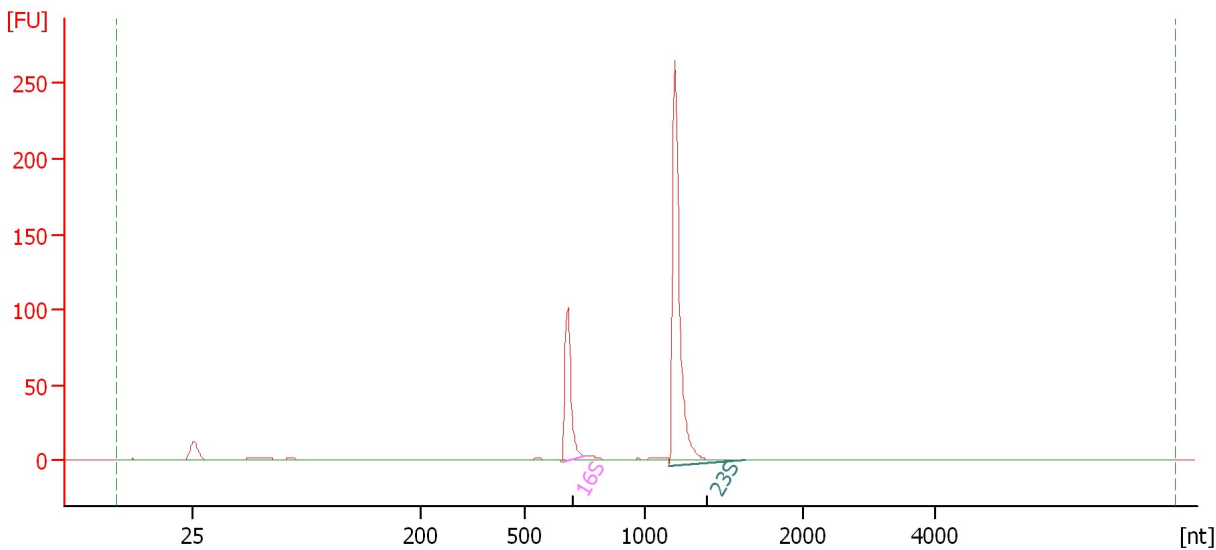
Name	Start Size [nt]	End Size [nt]	Area	% of total Area
16S	654	751	69.3	25.2
23S	1,155	1,500	174.6	63.4

Assay Class: Prokaryote Total RNA Nano  
Data Path: C:\...ents and Settings\Bioanalyzer\2012-03-21\2012-03-21\_006.xad

Created: 3/21/2012 4:17:14 PM  
Modified: 3/21/2012 4:41:04 PM

**Electropherogram Summary Continued ...**

NRC-1 culture 4 2 undepleted



**Overall Results for sample 10 : NRC-1 culture 4 2 undepleted**

RNA Area: 313.5 rRNA Ratio [23s / 16s]: 2.9  
RNA Concentration: 470 ng/μl RNA Integrity Number (RIN): N/A (B.02.08)

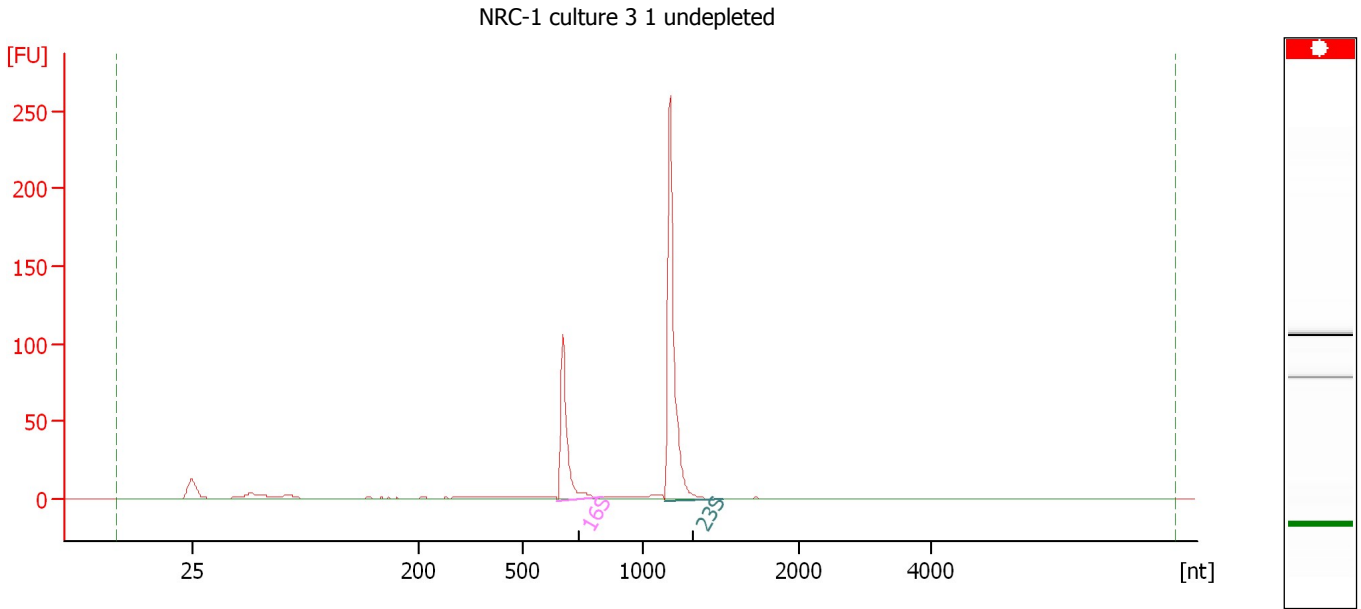
**Fragment table for sample 10 : NRC-1 culture 4 2 undepleted**

Name	Start Size [nt]	End Size [nt]	Area	% of total Area
16S	655	748	76.5	24.4
23S	1,154	1,630	222.5	71.0

Assay Class: Prokaryote Total RNA Nano  
Data Path: C:\...ents and Settings\Bioanalyzer\2012-03-21\2012-03-21\_006.xad

Created: 3/21/2012 4:17:14 PM  
Modified: 3/21/2012 4:41:04 PM

**Electropherogram Summary Continued ...**



**Overall Results for sample 11 : NRC-1 culture 3 1 undepleted**

RNA Area: 318.5 rRNA Ratio [23s / 16s]: 2.3  
RNA Concentration: 478 ng/μl RNA Integrity Number (RIN): N/A (B.02.08)

**Fragment table for sample 11 : NRC-1 culture 3 1 undepleted**

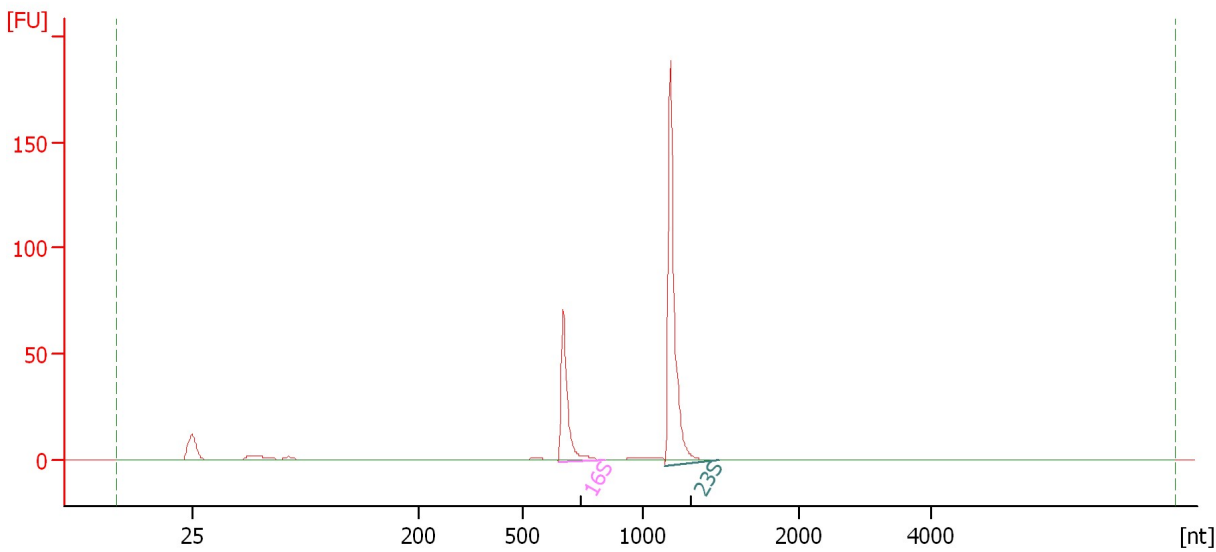
Name	Start Size [nt]	End Size [nt]	Area	% of total Area
16S	640	828	89.0	28.0
23S	1,133	1,515	204.6	64.2

Assay Class: Prokaryote Total RNA Nano  
Data Path: C:\...ents and Settings\Bioanalyzer\2012-03-21\2012-03-21\_006.xad

Created: 3/21/2012 4:17:14 PM  
Modified: 3/21/2012 4:41:04 PM

**Electropherogram Summary Continued ...**

NRC-1 culture 3 2 undepleted



**Overall Results for sample 12 : NRC-1 culture 3 2 undepleted**

RNA Area: 219.6 rRNA Ratio [23s / 16s]: 2.4  
RNA Concentration: 329 ng/μl RNA Integrity Number (RIN): N/A (B.02.08)

**Fragment table for sample 12 : NRC-1 culture 3 2 undepleted**

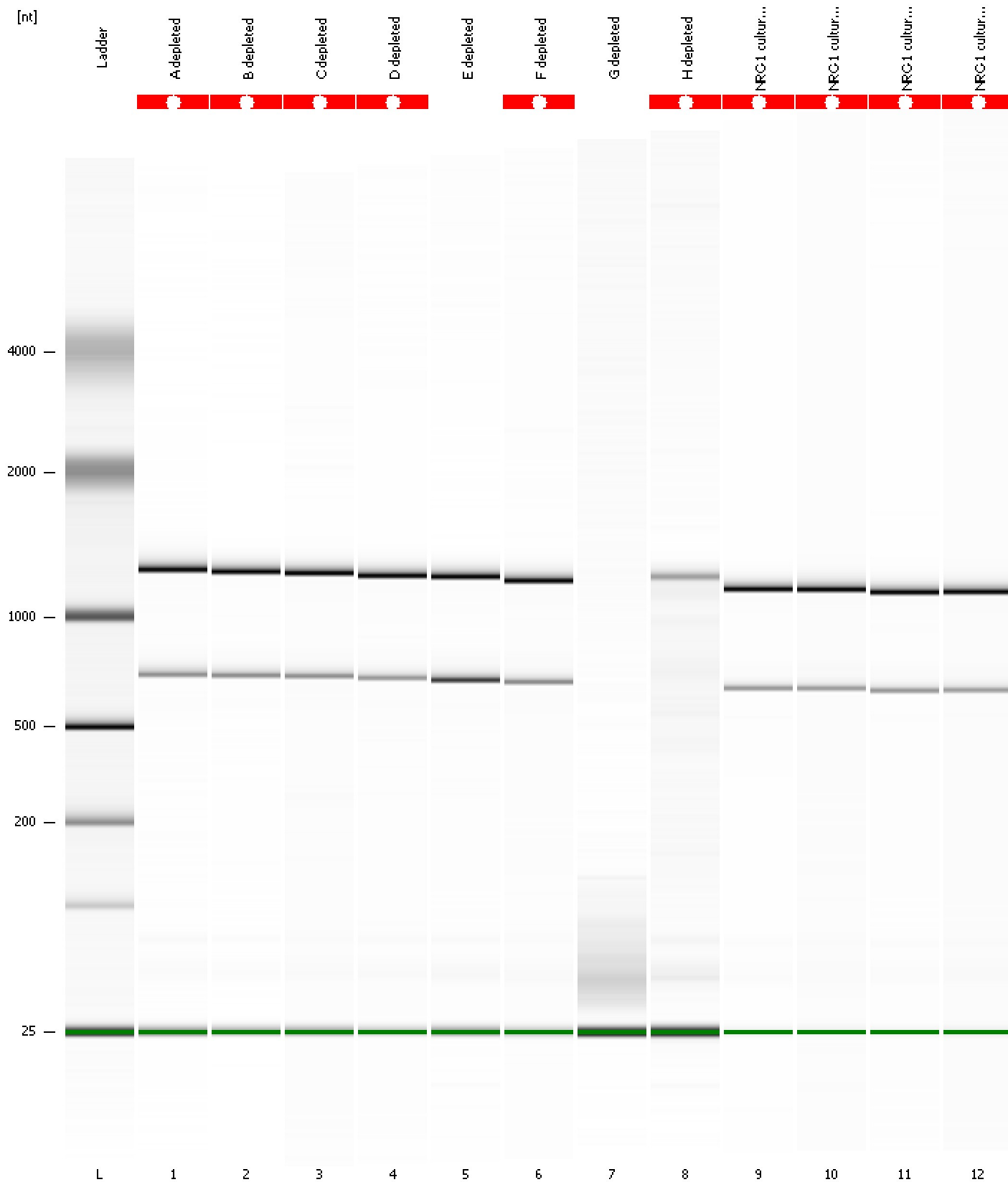
Name	Start Size [nt]	End Size [nt]	Area	% of total Area
16S	645	841	61.2	27.9
23S	1,140	1,481	148.6	67.7



Assay Class: Prokaryote Total RNA Nano  
Data Path: C:\...ents and Settings\Bioanalyzer\2012-03-21\2012-03-21\_006.xad

Created: 3/21/2012 4:17:14 PM  
Modified: 3/21/2012 4:41:04 PM

**Gel Image**



Assay Class: Prokaryote Total RNA Nano  
 Data Path: C:\...ents and Settings\Bioanalyzer\2012-03-21\2012-03-21\_006.xad

Created: 3/21/2012 4:17:14 PM  
 Modified: 3/21/2012 4:41:04 PM

**Run Logbook**

Description	Number	Source	Category	Sub Category	Time	Time Zone	User	Host
Run ended on port 1 (Number of wells acquired: 13)		Instrument	Run		3/21/2012 4:41:01 PM	(GMT --07:00) Pacific Standard Time	UC Davis	D8XSMGH1
Run started on port 1 (File: C:\Documents and Settings\Bioanalyzer\2012-03-21\2012-03-21_006.xad)		Instrument	Run		3/21/2012 4:17:19 PM	(GMT --07:00) Pacific Standard Time	UC Davis	D8XSMGH1
Product Number : G2938B		Instrument	Run		3/21/2012 4:17:19 PM	(GMT --07:00) Pacific Standard Time	UC Davis	D8XSMGH1
Name :		Instrument	Run		3/21/2012 4:17:19 PM	(GMT --07:00) Pacific Standard Time	UC Davis	D8XSMGH1
Vendor : Agilent Technologies		Instrument	Run		3/21/2012 4:17:19 PM	(GMT --07:00) Pacific Standard Time	UC Davis	D8XSMGH1
Serial# : DE13701086		Instrument	Run		3/21/2012 4:17:19 PM	(GMT --07:00) Pacific Standard Time	UC Davis	D8XSMGH1
Firmware : C.01.069		Instrument	Run		3/21/2012 4:17:19 PM	(GMT --07:00) Pacific Standard Time	UC Davis	D8XSMGH1
Cartridge : Electrode		Instrument	Run		3/21/2012 4:17:19 PM	(GMT --07:00) Pacific Standard Time	UC Davis	D8XSMGH1