

Assay Class: High Sensitivity DNA Assay  
Data Path: C:\...ents and Settings\Bioanalyzer\2012-03-22\2012-03-22\_003.xad

Created: 3/22/2012 12:13:16 PM  
Modified: 3/22/2012 12:47:12 PM

### Electrophoresis File Run Summary

#### Instrument Information:

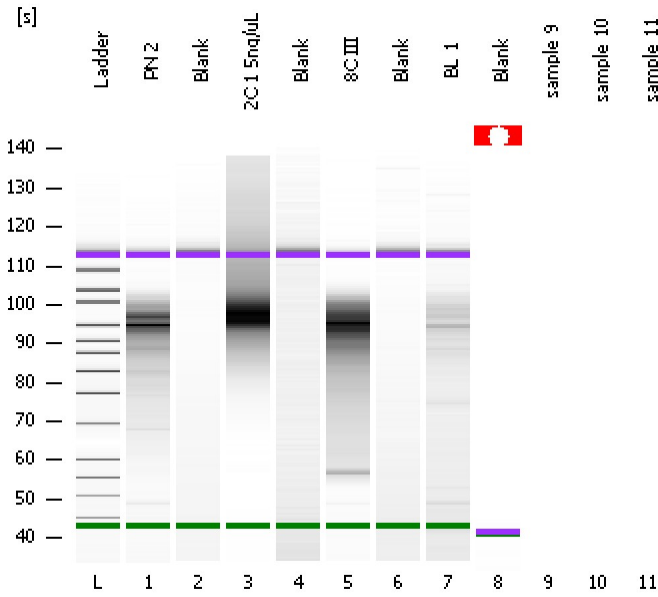
Instrument Name: DE13701086      Firmware: C.01.069  
Serial#: DE13701086      Type: G2938B

#### Assay Information:

Assay Origin Path: C:\Program Files\Agilent\2100 bioanalyzer\2100 expert\assays\dsDNA\High Sensitivity DNA.xsy  
Assay Class: High Sensitivity DNA Assay  
Version: 1.03  
Assay Comments: Copyright © 2003-2010 Agilent Technologies

#### Chip Information:

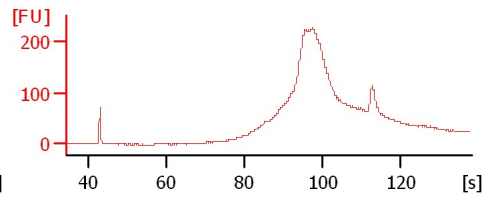
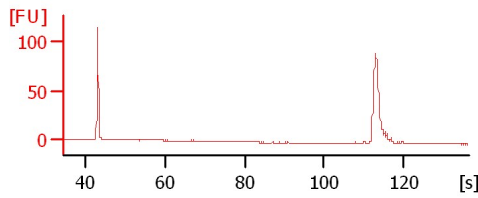
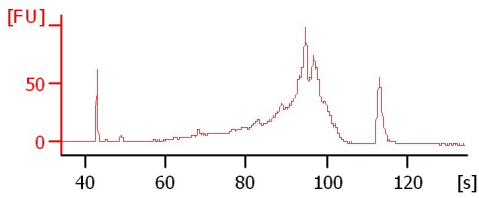
Chip Lot #:   
Reagent Kit Lot #:   
Chip Comments:



PN 2

Blank

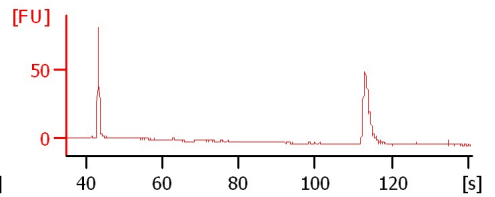
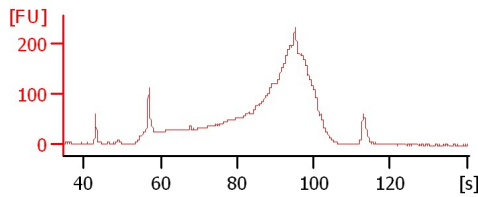
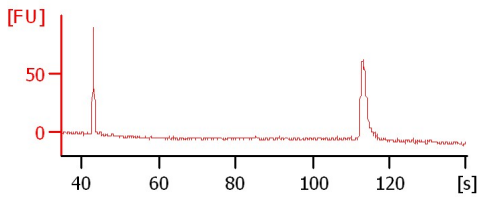
2C 1.5ng/uL



Blank

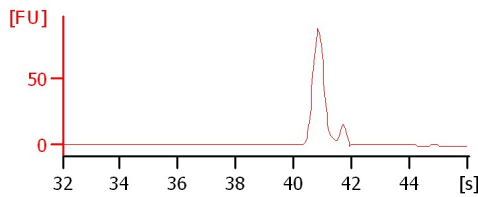
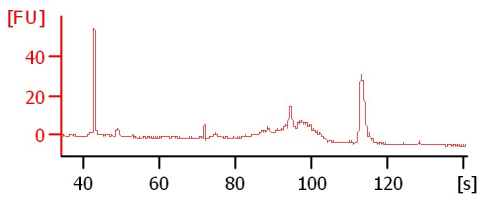
8C III

Blank



BL 1

Blank



Assay Class: High Sensitivity DNA Assay  
 Data Path: C:\...ents and Settings\Bioanalyzer\2012-03-22\2012-03-22\_003.xad

Created: 3/22/2012 12:13:16 PM  
 Modified: 3/22/2012 12:47:12 PM

**Electrophoresis File Run Summary (Chip Summary)**

Sample Name	Sample Comment	Rest. Digest	Status	Observation	Result Label	Result Color
PN 2		<input type="checkbox"/>	✓			
Blank		<input type="checkbox"/>	✓			
2C 1 5ng/uL		<input type="checkbox"/>	✓			
Blank		<input type="checkbox"/>	✓			
8C III		<input type="checkbox"/>	✓			
Blank		<input type="checkbox"/>	✓			
BL 1		<input type="checkbox"/>	✓			
Blank		<input type="checkbox"/>	✗			
sample 9		<input type="checkbox"/>	✗			
sample 10		<input type="checkbox"/>	✗			
sample 11		<input type="checkbox"/>	✗			
Ladder		<input type="checkbox"/>	✓			

**Chip Lot #**

**Reagent Kit Lot #**

**Chip Comments :**

Assay Class: High Sensitivity DNA Assay  
Data Path: C:\...ents and Settings\Bioanalyzer\2012-03-22\2012-03-22\_003.xad

Created: 3/22/2012 12:13:16 PM  
Modified: 3/22/2012 12:47:12 PM

**Electrophoresis Assay Details**

**General Analysis Settings**

Number of Available Sample and Ladder Wells (Max.) : 12  
Minimum Visible Range [s] : 32  
Maximum Visible Range [s] : 138  
Start Analysis Time Range [s] : 33  
End Analysis Time Range [s] : 137.5  
Ladder Concentration [pg/μl] : 1950  
Uses Standard Area for Ladder Fragments  
Lower Marker Concentration [pg/μl] : 125  
Upper Marker Concentration [pg/μl] : 75  
Used Upper Marker for Quantitation  
Standard Curve Fit is Point to Point  
Show Data Aligned to Lower and Upper Marker

**Integrator Settings**

Integration Start Time [s] : 33.05  
Integration End Time [s] : 137  
Slope Threshold : 0.8  
Height Threshold [FU] : 5  
Area Threshold : 0.1  
Width Threshold [s] : 0.6  
Baseline Plateau [s] : 0.5

**Filter Settings**

Filter Width [s] : 0.5  
Polynomial Order : 4

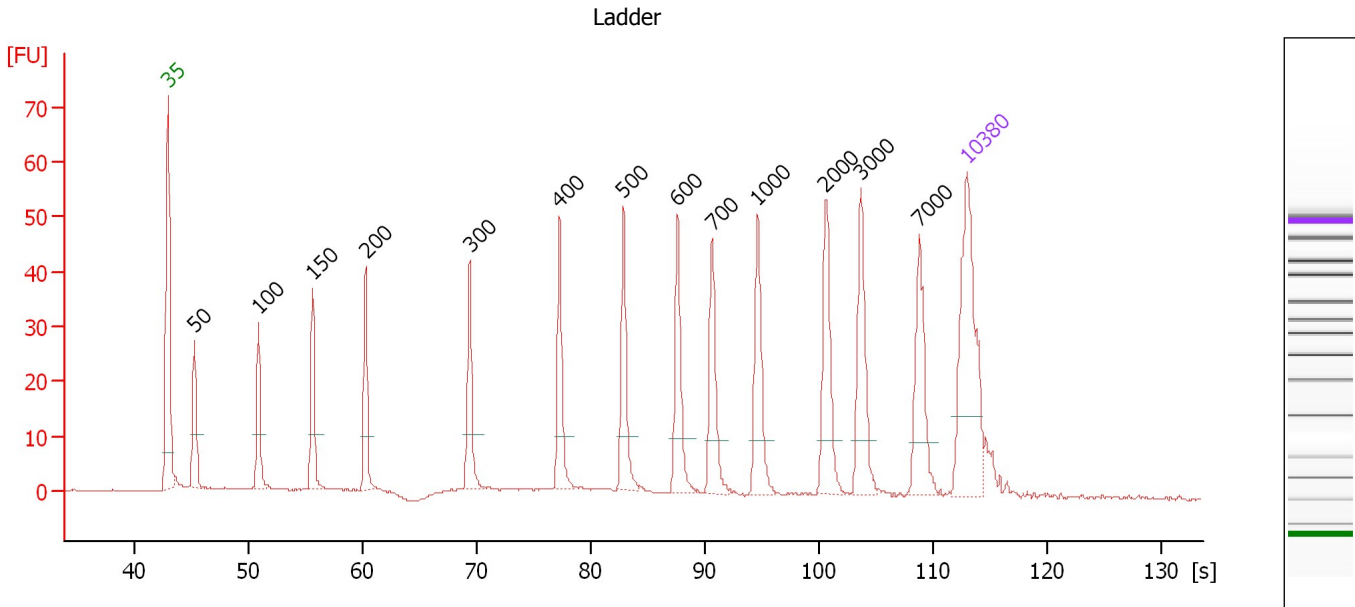
**Ladder**

Ladder Peak	Size	Area
1	35	160
2	50	210
3	100	208
4	150	221
5	200	242
6	300	270
7	400	305
8	500	306
9	600	336
10	700	321
11	1000	366
12	2000	413
13	3000	411
14	7000	400
15	10380	214

Assay Class: High Sensitivity DNA Assay  
 Data Path: C:\...ents and Settings\Bioanalyzer\2012-03-22\2012-03-22\_003.xad

Created: 3/22/2012 12:13:16 PM  
 Modified: 3/22/2012 12:47:12 PM

**Electropherogram Summary**



**Overall Results for Ladder**

Noise: 0.2

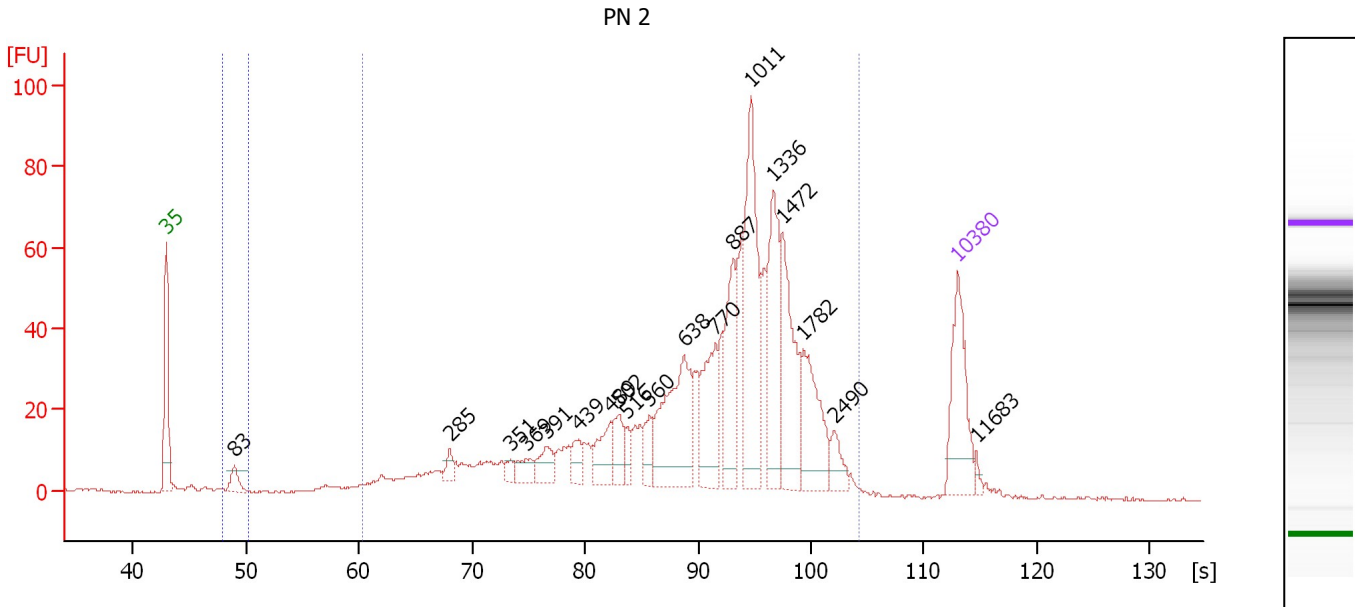
**Peak table for Ladder**

Peak	Size [bp]	Conc. [pg/μl]	Molarity [pmol/l]	Observations
1	35	125.00	5,411.3	Lower Marker
2	50	150.00	4,545.5	Ladder Peak
3	100	150.00	2,272.7	Ladder Peak
4	150	150.00	1,515.2	Ladder Peak
5	200	150.00	1,136.4	Ladder Peak
6	300	150.00	757.6	Ladder Peak
7	400	150.00	568.2	Ladder Peak
8	500	150.00	454.5	Ladder Peak
9	600	150.00	378.8	Ladder Peak
10	700	150.00	324.7	Ladder Peak
11	1,000	150.00	227.3	Ladder Peak
12	2,000	150.00	113.6	Ladder Peak
13	3,000	150.00	75.8	Ladder Peak
14	7,000	150.00	32.5	Ladder Peak
15	10,380	75.00	10.9	Upper Marker

Assay Class: High Sensitivity DNA Assay  
 Data Path: C:\...ents and Settings\Bioanalyzer\2012-03-22\2012-03-22\_003.xad

Created: 3/22/2012 12:13:16 PM  
 Modified: 3/22/2012 12:47:12 PM

**Electropherogram Summary Continued ...**



**Overall Results for sample 1 : PN 2**

Number of peaks found: 19      Corr. Area 1: 1,088.3  
 Noise: 0.2      Corr. Area 2: 11.4

**Peak table for sample 1 : PN 2**

Peak	Size [bp]	Conc. [pg/μl]	Molarity [pmol/l]	Observations
1	35	125.00	5,411.3	Lower Marker
2	83	24.13	439.1	
3	285	13.99	74.4	
4	351	9.25	39.9	
5	369	18.84	77.4	
6	391	27.32	105.9	
7	439	19.21	66.3	
8	489	41.77	129.4	
9	502	28.71	86.7	
10	516	15.70	46.1	
11	560	23.42	63.4	
12	638	138.03	327.9	
13	770	79.53	156.6	
14	887	85.11	145.4	
15	1,011	153.69	230.4	
16	1,336	103.71	117.6	
17	1,472	98.65	101.6	
18	1,782	76.60	65.1	
19	2,490	19.68	12.0	
20	10,380	75.00	10.9	Upper Marker
21	11,683	0.00	0.0	

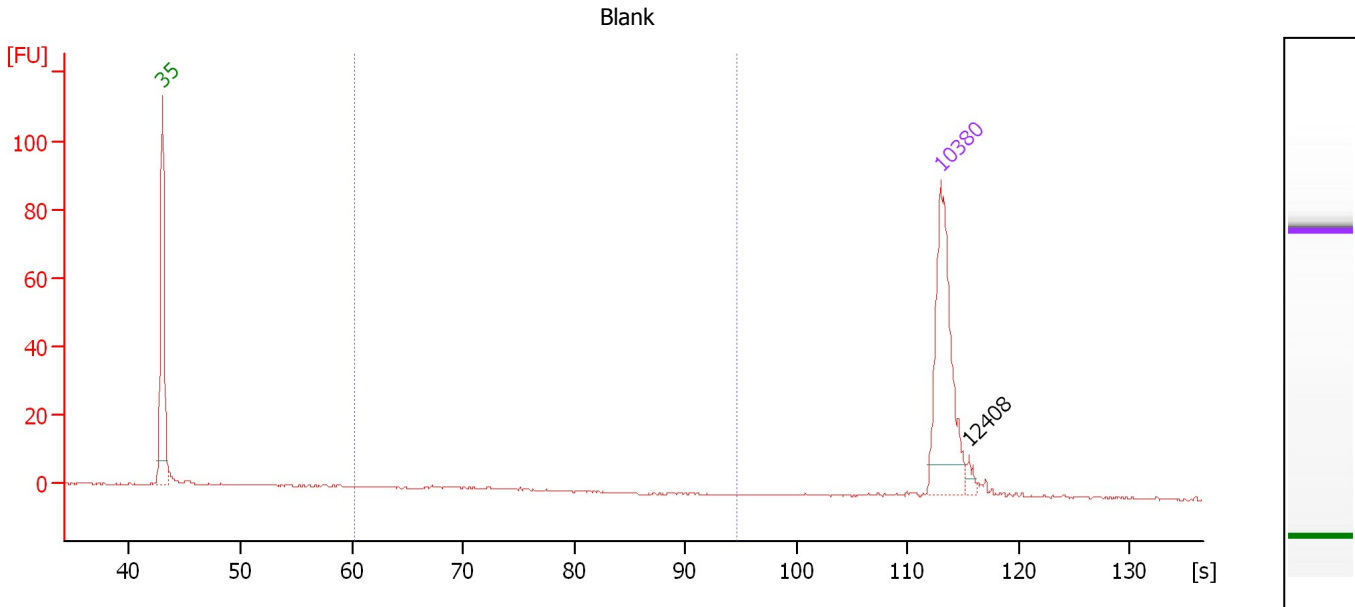
**Region table for sample 1 : PN 2**

From [bp]	Molarity [pmol/l]	Average Size [bp]	Conc. [pg/μl]	To [bp]	Corr. Area	% of Total	Size distribution in CV [%]	Color
74	451.8	83	24.85	94	11.4	1	4.2	Blue
200	3,583.0	975	1,465.15	3,433	1,088.3	96	55.8	Dark Blue

Assay Class: High Sensitivity DNA Assay  
 Data Path: C:\...ents and Settings\Bioanalyzer\2012-03-22\2012-03-22\_003.xad

Created: 3/22/2012 12:13:16 PM  
 Modified: 3/22/2012 12:47:12 PM

**Electropherogram Summary Continued ...**



**Overall Results for sample 2 : Blank**

Number of peaks found: 1                      Corr. Area 1: 2.1  
 Noise: 0.2

**Peak table for sample 2 : Blank**

Peak	Size [bp]	Conc. [pg/μl]	Molarity [pmol/l]	Observations
1	35	125.00	5,411.3	Lower Marker
2	10,380	75.00	10.9	Upper Marker
3	12,408	0.00	0.0	

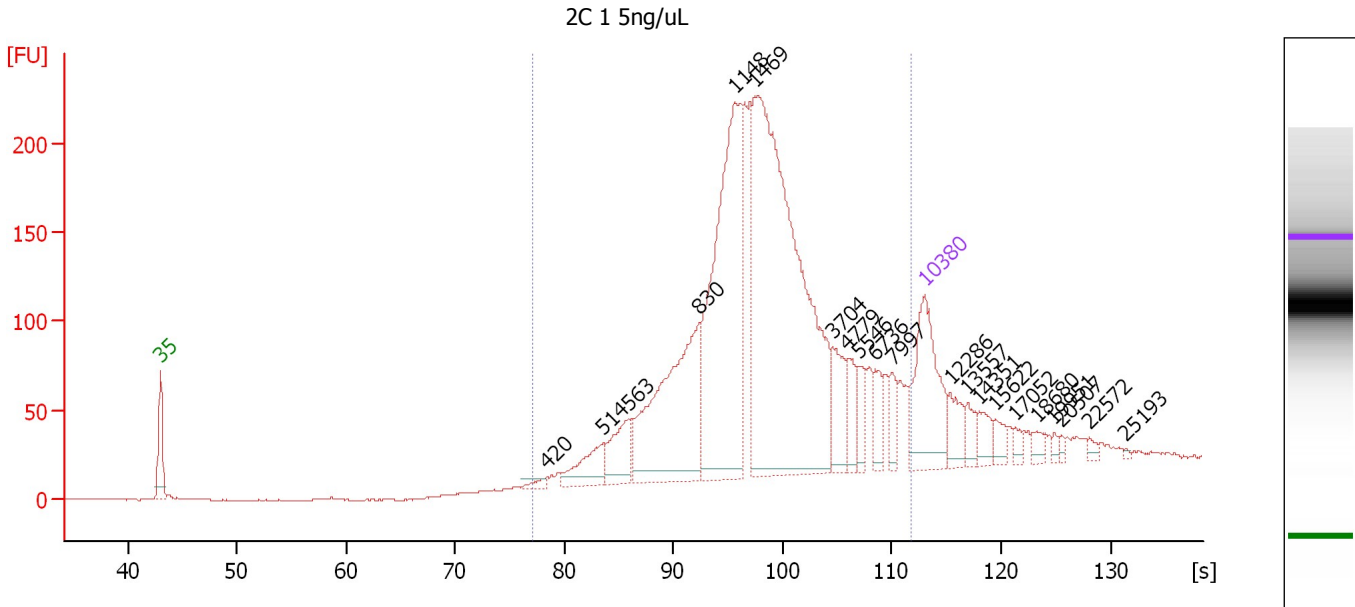
**Region table for sample 2 : Blank**

From [bp]	Molarity [pmol/l]	Average Size [bp]	Conc. [pg/μl]	To [bp]	Corr. Area	% of Total	Size distribution in CV [%]	Color
200	10.5	289	1.95	1,000	2.1	8	15.7	Blue

Assay Class: High Sensitivity DNA Assay  
 Data Path: C:\...ents and Settings\Bioanalyzer\2012-03-22\2012-03-22\_003.xad

Created: 3/22/2012 12:13:16 PM  
 Modified: 3/22/2012 12:47:12 PM

**Electropherogram Summary Continued ...**



**Overall Results for sample 3 : 2C 1 5ng/uL**

Number of peaks found: 21      Corr. Area 1: 2,813.5  
 Noise: 0.3

**Peak table for sample 3 : 2C 1 5ng/uL**

Peak	Size [bp]	Conc. [pg/μl]	Molarity [pmol/l]	Observations
1	35	125.00	5,411.3	Lower Marker
2	420	5.78	20.8	
3	514	37.22	109.8	
4	563	40.03	107.7	
5	830	184.57	336.9	
6	1,148	259.47	342.5	
7	1,469	427.42	440.8	
8	3,704	34.79	14.2	
9	4,779	21.07	6.7	
10	5,546	17.73	4.8	
11	6,736	15.70	3.5	
12	7,997	13.47	2.6	
13	10,380	75.00	10.9	Upper Marker
14	12,286	0.00	0.0	
15	13,557	0.00	0.0	
16	14,351	0.00	0.0	
17	15,622	0.00	0.0	
18	17,052	0.00	0.0	
19	18,680	0.00	0.0	
20	19,951	0.00	0.0	
21	20,507	0.00	0.0	
22	22,572	0.00	0.0	
23	25,193	0.00	0.0	

Assay Class: High Sensitivity DNA Assay  
Data Path: C:\...ents and Settings\Bioanalyzer\2012-03-22\2012-03-22\_003.xad

Created: 3/22/2012 12:13:16 PM  
Modified: 3/22/2012 12:47:12 PM

**Electropherogram Summary Continued ...**

... Region table for sample 3 :

2C 1.5ng/uL

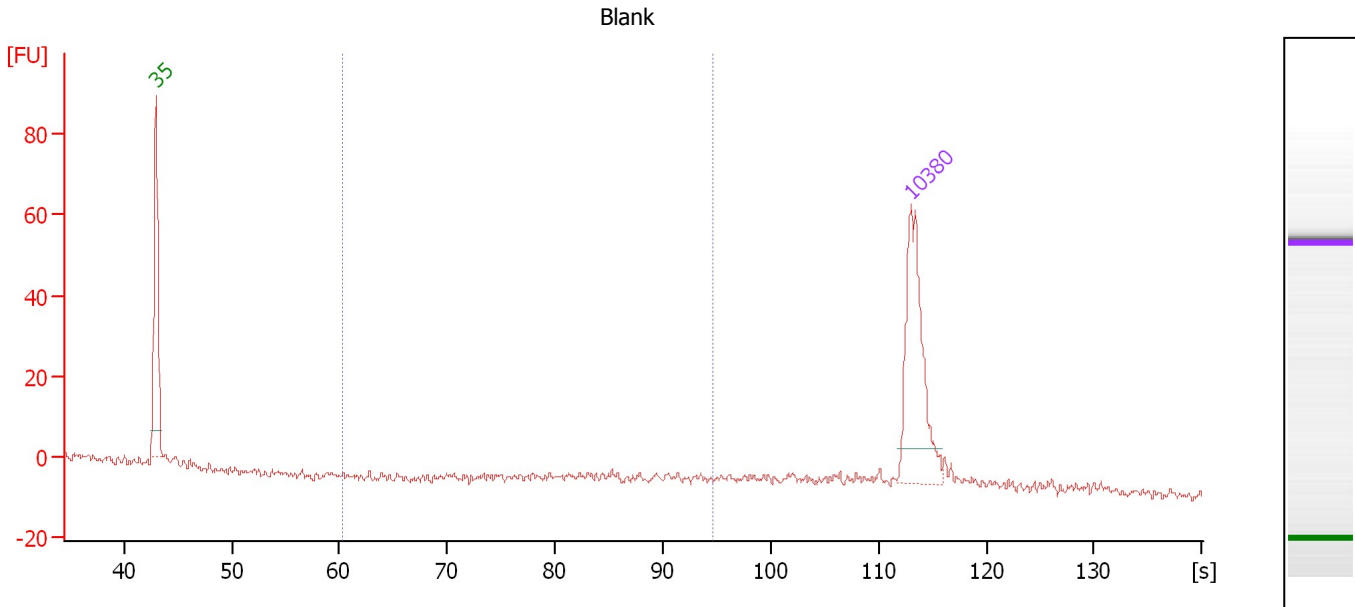
From [bp]	Molarity [pmol/l]	Average Size [bp]	Conc. [pg/μl]	To [bp]	Corr. Area	% of Total	Size distribution in CV [%]	Color
399	1,416.5	2,158	1,132.54	9,342	2,813.5	91	90.2	■



Assay Class: High Sensitivity DNA Assay  
 Data Path: C:\...ents and Settings\Bioanalyzer\2012-03-22\2012-03-22\_003.xad

Created: 3/22/2012 12:13:16 PM  
 Modified: 3/22/2012 12:47:12 PM

**Electropherogram Summary Continued ...**



**Overall Results for sample 4 : Blank**

Number of peaks found: 0                      Corr. Area 1: 1.7  
 Noise: 1.0

**Peak table for sample 4 : Blank**

Peak	Size [bp]	Conc. [pg/μl]	Molarity [pmol/l]	Observations
1	35	125.00	5,411.3	Lower Marker
2	10,380	75.00	10.9	Upper Marker

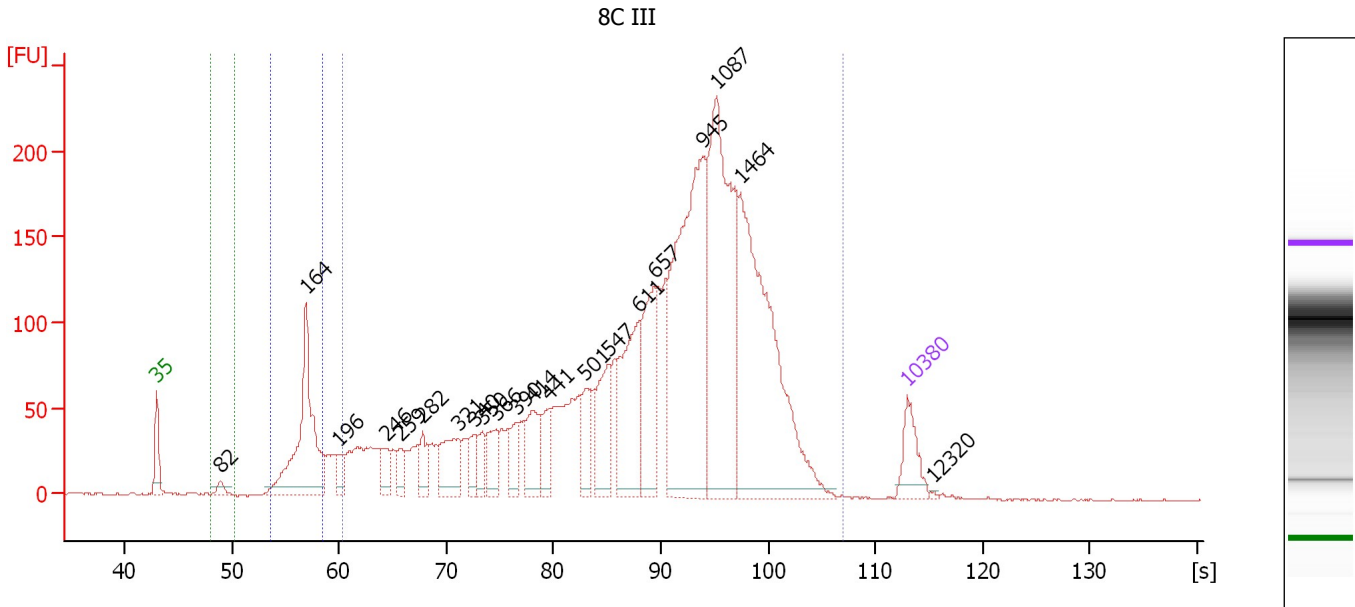
**Region table for sample 4 : Blank**

From [bp]	Molarity [pmol/l]	Average Size [bp]	Conc. [pg/μl]	To [bp]	Corr. Area	% of Total	Size distribution in CV [%]	Color
200	3.2	721	1.46	1,000	1.7	4	18.9	Blue

Assay Class: High Sensitivity DNA Assay  
 Data Path: C:\...ents and Settings\Bioanalyzer\2012-03-22\2012-03-22\_003.xad

Created: 3/22/2012 12:13:16 PM  
 Modified: 3/22/2012 12:47:12 PM

**Electropherogram Summary Continued ...**



**Overall Results for sample 5 : 8C III**

Number of peaks found:	21	Corr. Area 2:	279.1
Noise:	0.5	Corr. Area 3:	11.2
Corr. Area 1:	3,976.9		

**Peak table for sample 5 : 8C III**

Peak	Size [bp]	Conc. [pg/μl]	Molarity [pmol/l]	Observations
1	35	125.00	5,411.3	Lower Marker
2	82	25.47	469.5	
3	164	522.05	4,835.3	
4	196	51.81	399.7	
5	246	58.72	362.2	
6	259	49.45	288.9	
7	282	70.01	376.3	
8	321	136.48	644.1	
9	340	53.12	236.6	
10	350	57.14	247.6	
11	366	86.75	358.8	
12	390	60.44	234.9	
13	414	117.77	430.6	
14	441	76.46	262.6	
15	501	96.67	292.1	
16	547	167.13	463.2	
17	611	289.09	717.3	
18	657	245.74	566.5	
19	945	773.54	1,240.0	
20	1,087	666.20	928.4	
21	1,464	723.05	748.1	
22	10,380	75.00	10.9	Upper Marker
23	12,320	0.00	0.0	




Assay Class: High Sensitivity DNA Assay  
Data Path: C:\...ents and Settings\Bioanalyzer\2012-03-22\2012-03-22\_003.xad

Created: 3/22/2012 12:13:16 PM  
Modified: 3/22/2012 12:47:12 PM

**Electropherogram Summary Continued ...**

... Region table for sample 5 :

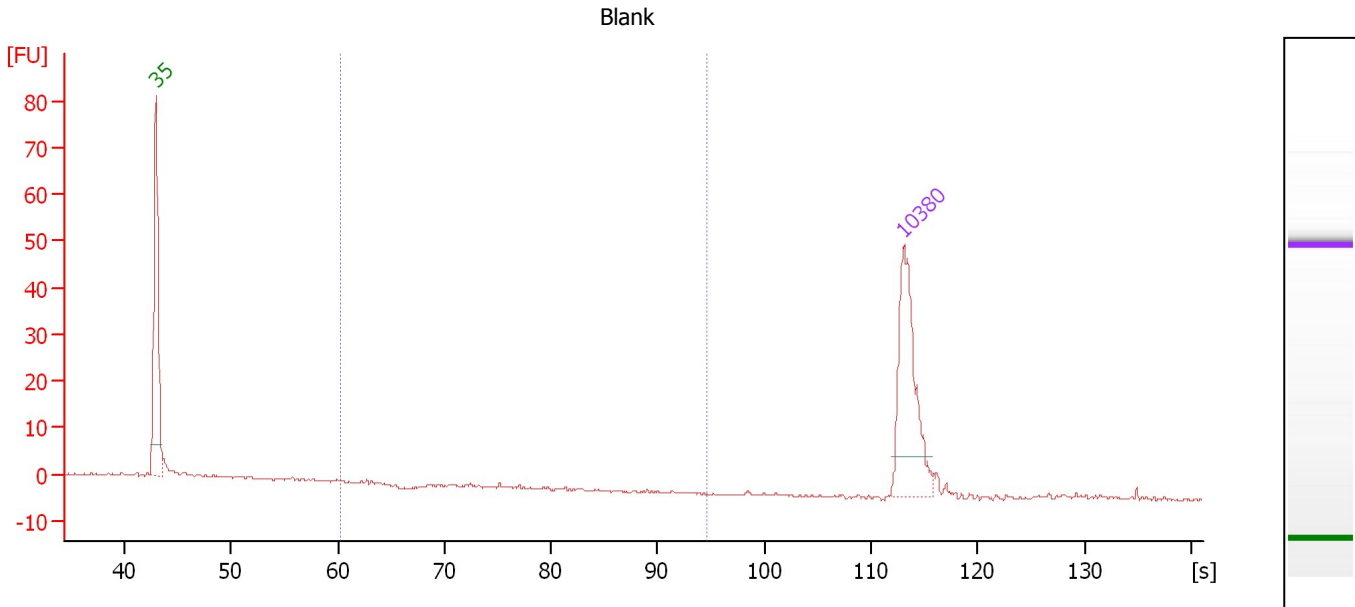
**8C III**

<b>From [bp]</b>	<b>Molarity [pmol/l]</b>	<b>Average Size [bp]</b>	<b>Conc. [pg/μl]</b>	<b>To [bp]</b>	<b>Corr. Area</b>	<b>% of Total</b>	<b>Size distribution in CV [%]</b>	<b>Color</b>
74	394.9	83	21.57	94	11.2	0	3.1	
128	4,695.5	161	497.13	181	279.1	6	6.8	
200	13,254.9	940	4,847.16	5,525	3,976.9	91	64.0	

Assay Class: High Sensitivity DNA Assay  
 Data Path: C:\...ents and Settings\Bioanalyzer\2012-03-22\2012-03-22\_003.xad

Created: 3/22/2012 12:13:16 PM  
 Modified: 3/22/2012 12:47:12 PM

**Electropherogram Summary Continued ...**



**Overall Results for sample 6 : Blank**

Number of peaks found: 0                      Corr. Area 1: 0.0  
 Noise: 0.2

**Peak table for sample 6 : Blank**

Peak	Size [bp]	Conc. [pg/μl]	Molarity [pmol/l]	Observations
1	35	125.00	5,411.3	Lower Marker
2	10,380	75.00	10.9	Upper Marker

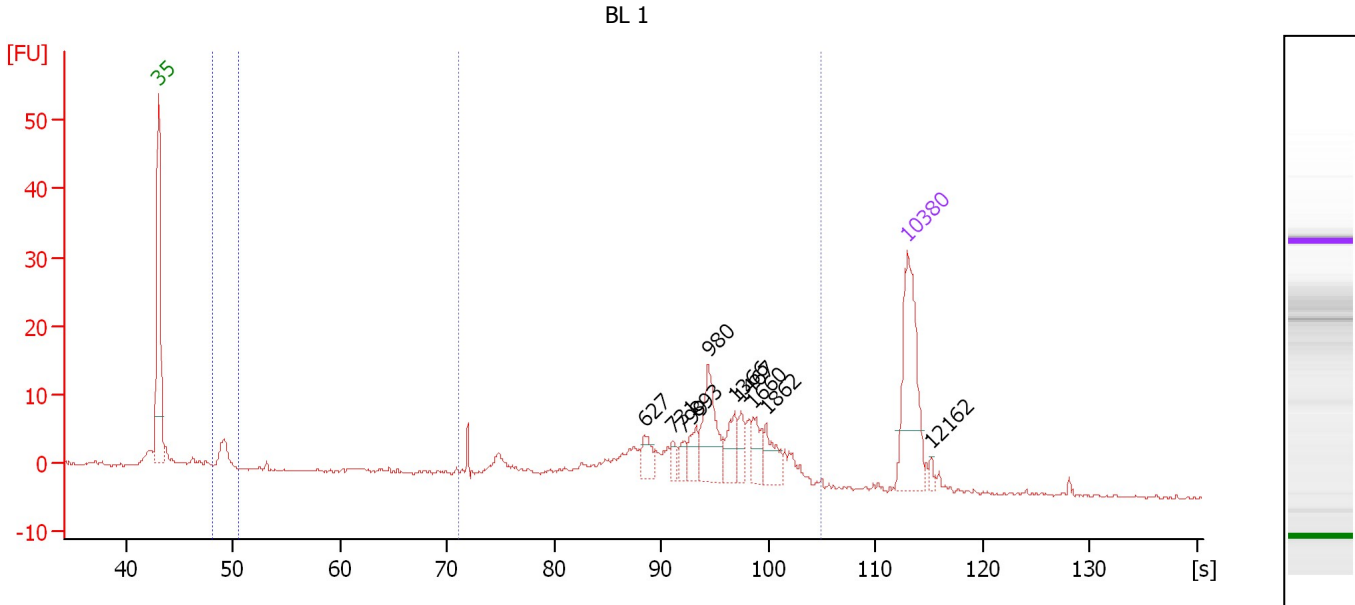
**Region table for sample 6 : Blank**

From [bp]	Molarity [pmol/l]	Average Size [bp]	Conc. [pg/μl]	To [bp]	Corr. Area	% of Total	Size distribution in CV [%]	Color
200	0.3	226	0.05	1,000	0.0	0	0.1	Blue

Assay Class: High Sensitivity DNA Assay  
 Data Path: C:\...ents and Settings\Bioanalyzer\2012-03-22\2012-03-22\_003.xad

Created: 3/22/2012 12:13:16 PM  
 Modified: 3/22/2012 12:47:12 PM

**Electropherogram Summary Continued ...**



**Overall Results for sample 7 : BL 1**

Number of peaks found: 10                      Corr. Area 1: 154.2  
 Noise: 0.2    Corr. Area 2: 8.2

**Peak table for sample 7 : BL 1**

Peak	Size [bp]	Conc. [pg/μl]	Molarity [pmol/l]	Observations
1	35	125.00	5,411.3	Lower Marker
2	627	16.74	40.4	
3	731	8.51	17.6	
4	799	8.62	16.3	
5	893	15.29	25.9	
6	980	49.28	76.2	
7	1,366	20.77	23.0	
8	1,467	12.36	12.8	
9	1,660	16.94	15.5	
10	1,862	18.35	14.9	
11	10,380	75.00	10.9	Upper Marker
12	12,162	0.00	0.0	

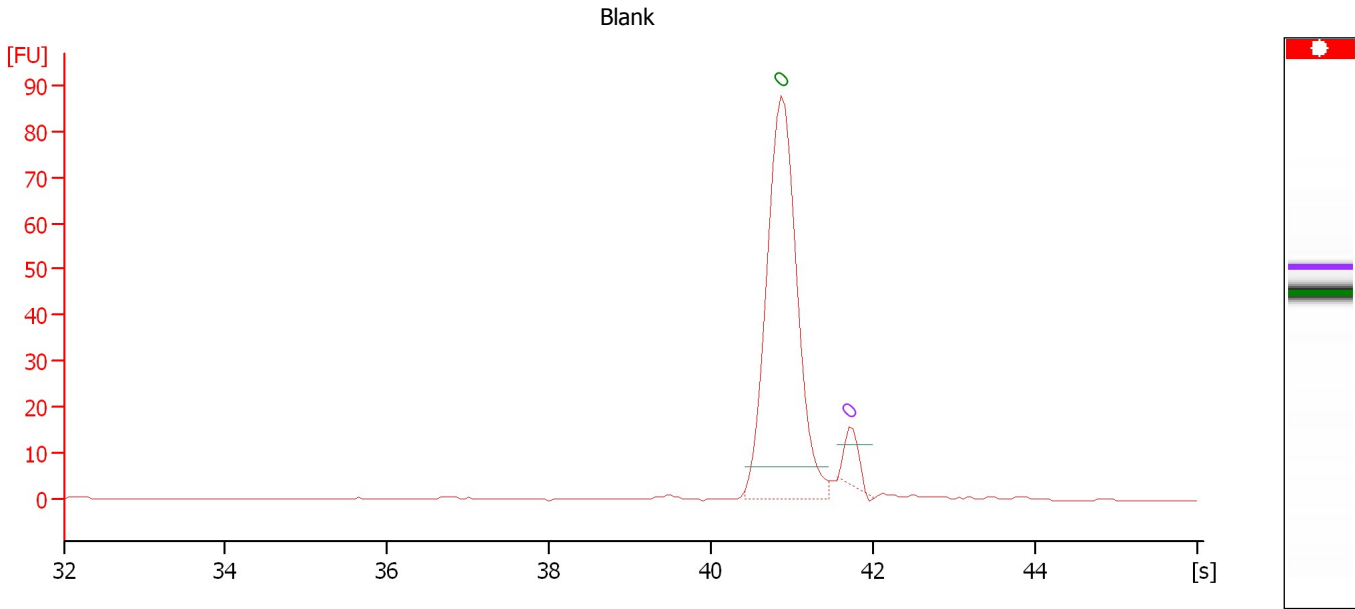
**Region table for sample 7 : BL 1**

From [bp]	Molarity [pmol/l]	Average Size [bp]	Conc. [pg/μl]	To [bp]	Corr. Area	% of Total	Size distribution in CV [%]	Color
75	480.3	84	26.61	96	8.2	4	4.0	Blue
321	583.2	1,124	297.59	3,938	154.2	81	53.8	Dark Blue

Assay Class: High Sensitivity DNA Assay  
Data Path: C:\...ents and Settings\Bioanalyzer\2012-03-22\2012-03-22\_003.xad

Created: 3/22/2012 12:13:16 PM  
Modified: 3/22/2012 12:47:12 PM

**Electropherogram Summary Continued ...**



**Setpoint Deviations for sample 8 : Blank**

End Analysis Time Range [s] : 46.05

**Overall Results for sample 8 : Blank**

Number of peaks found: 0      Noise: 0.2

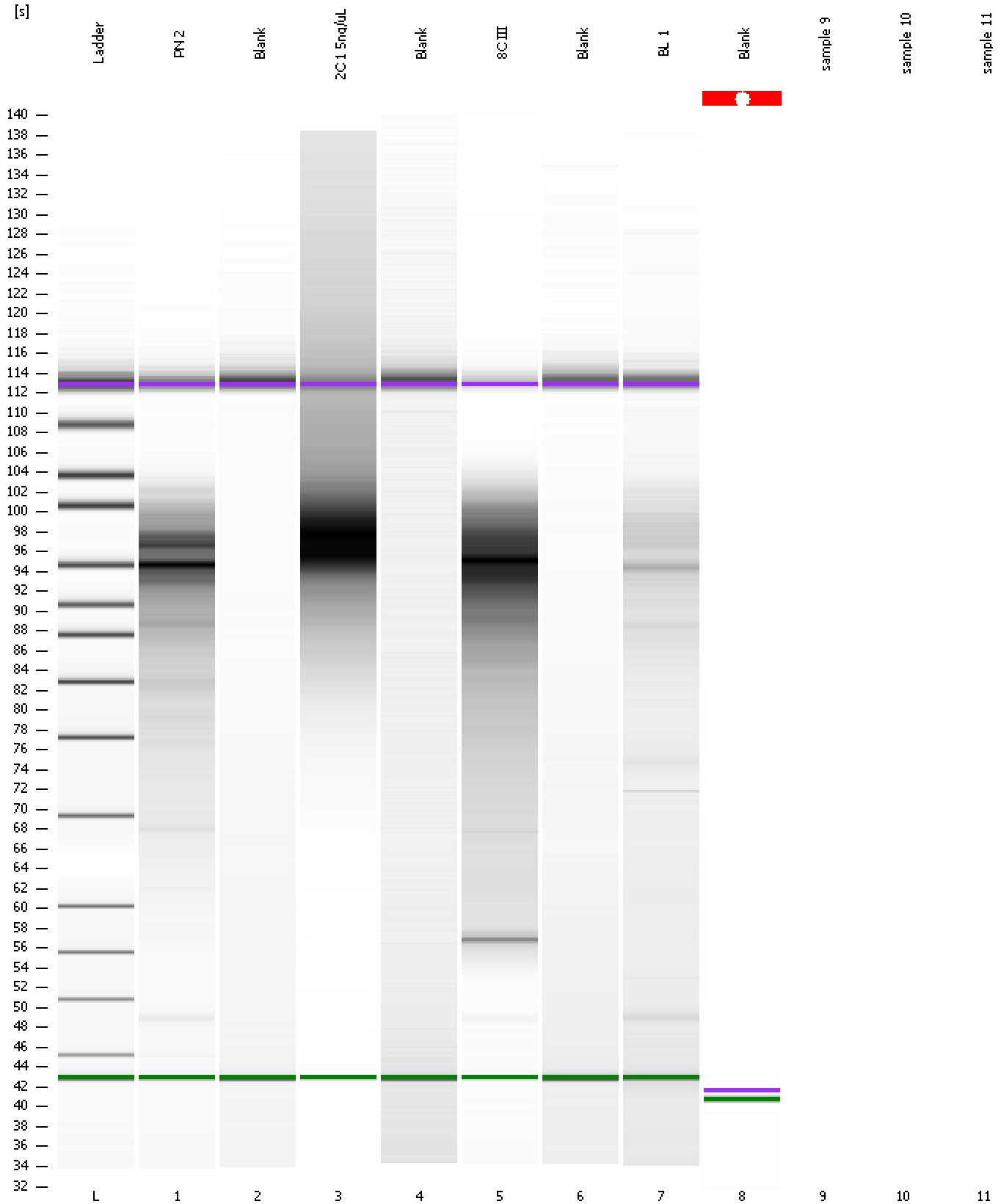
**Peak table for sample 8 : Blank**

Peak	Size [bp]	Conc. [pg/μl]	Molarity [pmol/l]	Observations
1	0	125.00	0.0	Lower Marker
2	0	75.00	0.0	Upper Marker

Assay Class: High Sensitivity DNA Assay  
Data Path: C:\...ents and Settings\Bioanalyzer\2012-03-22\2012-03-22\_003.xad

Created: 3/22/2012 12:13:16 PM  
Modified: 3/22/2012 12:47:12 PM

**Gel Image**



Assay Class: High Sensitivity DNA Assay  
Data Path: C:\...ents and Settings\Bioanalyzer\2012-03-22\2012-03-22\_003.xad

Created: 3/22/2012 12:13:16 PM  
Modified: 3/22/2012 12:47:12 PM

**Invalid Samples**

Sample 9 has not been run, no results available.

Sample 10 has not been run, no results available.

Sample 11 has not been run, no results available.



Assay Class: High Sensitivity DNA Assay  
 Data Path: C:\...ents and Settings\Bioanalyzer\2012-03-22\2012-03-22\_003.xad

Created: 3/22/2012 12:13:16 PM  
 Modified: 3/22/2012 12:47:12 PM

**Run Logbook**

Description	Number	Source	Category	Sub Category	Time	Time Zone	User	Host
Run aborted on port 1		Instrument	Run		3/22/2012 12:44:24 PM	(GMT --07:00) Pacific Standard Time	UC Davis	D8XSMGH1
Run started on port 1 (File: C:\Documents and Settings\Bioanalyzer\2012-03-22\2012-03-22_003.xad)		Instrument	Run		3/22/2012 12:13:21 PM	(GMT --07:00) Pacific Standard Time	UC Davis	D8XSMGH1
Product Number : G2938B		Instrument	Run		3/22/2012 12:13:21 PM	(GMT --07:00) Pacific Standard Time	UC Davis	D8XSMGH1
Name :		Instrument	Run		3/22/2012 12:13:21 PM	(GMT --07:00) Pacific Standard Time	UC Davis	D8XSMGH1
Vendor : Agilent Technologies		Instrument	Run		3/22/2012 12:13:21 PM	(GMT --07:00) Pacific Standard Time	UC Davis	D8XSMGH1
Serial# : DE13701086		Instrument	Run		3/22/2012 12:13:21 PM	(GMT --07:00) Pacific Standard Time	UC Davis	D8XSMGH1
Firmware : C.01.069		Instrument	Run		3/22/2012 12:13:21 PM	(GMT --07:00) Pacific Standard Time	UC Davis	D8XSMGH1
Cartridge : Electrode		Instrument	Run		3/22/2012 12:13:21 PM	(GMT --07:00) Pacific Standard Time	UC Davis	D8XSMGH1