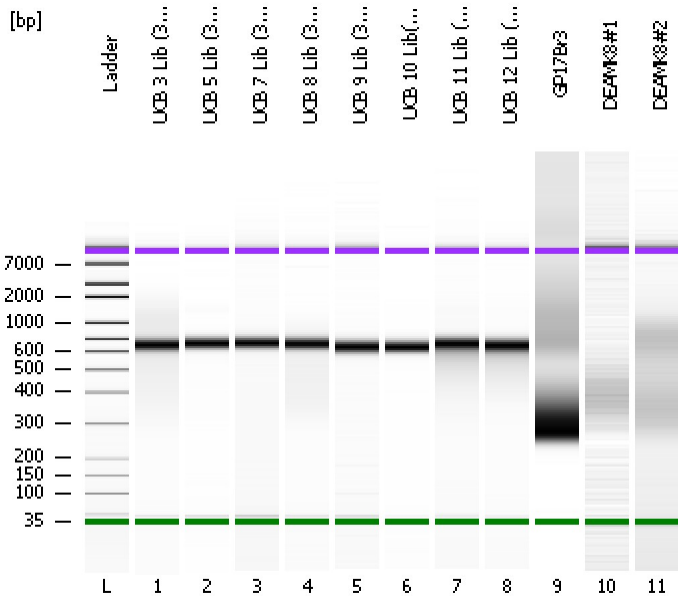


Assay Class: High Sensitivity DNA Assay
Data Path: C:\...ents and Settings\Bioanalyzer\2012-03-23\2012-03-23_001.xad

Created: 3/23/2012 10:15:48 AM
Modified: 3/23/2012 11:02:50 AM

Electrophoresis File Run Summary



Instrument Information:

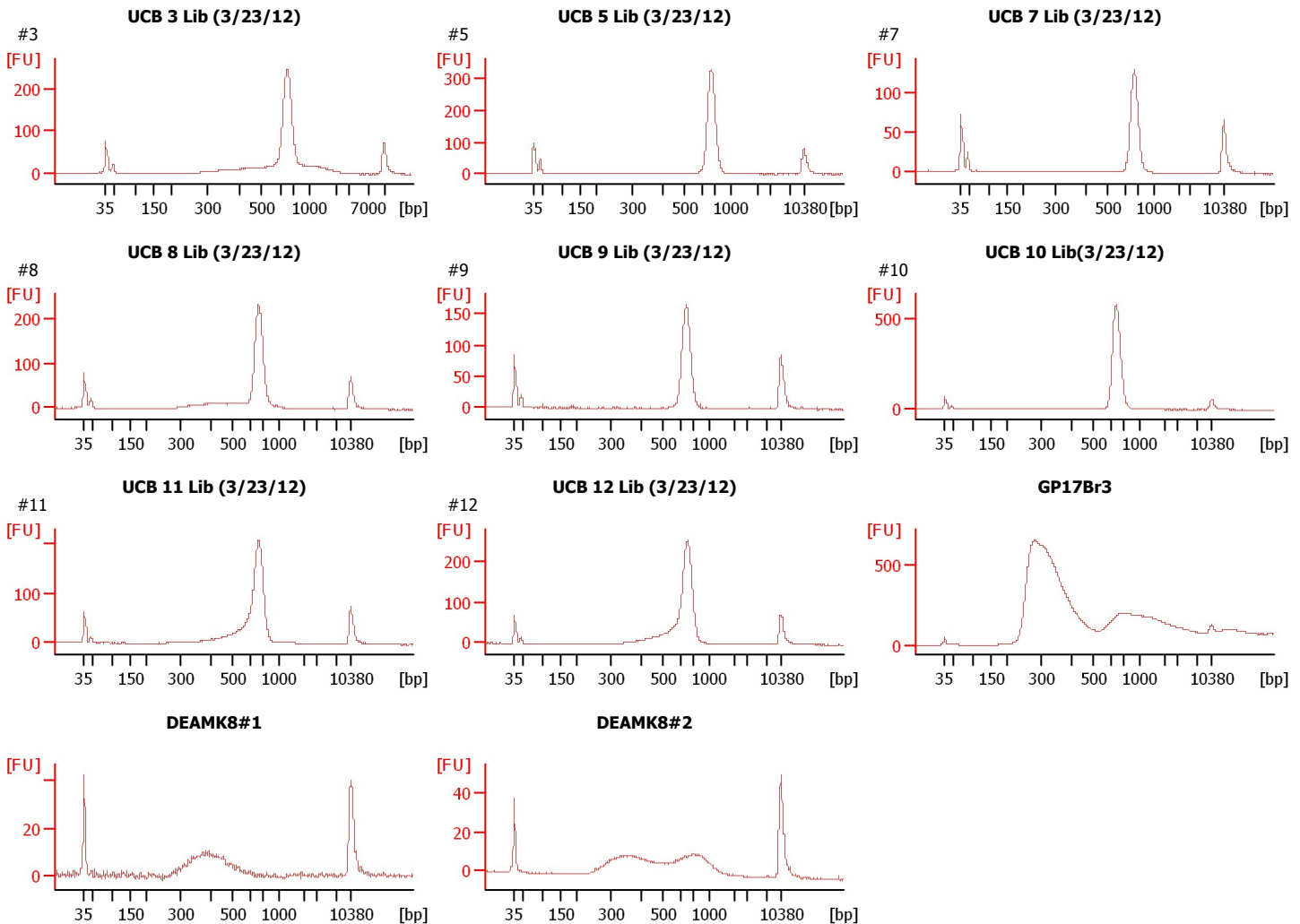
Instrument Name: DE13701086 Firmware: C.01.069
Serial#: DE13701086 Type: G2938B

Assay Information:

Assay Origin Path: C:\Program Files\Agilent\2100 bioanalyzer\2100 expert\assays\dsDNA\High Sensitivity DNA.xsy
Assay Class: High Sensitivity DNA Assay
Version: 1.03
Assay Comments: Copyright © 2003-2010 Agilent Technologies

Chip Information:

Chip Lot #:
Reagent Kit Lot #:
Chip Comments:



Assay Class: High Sensitivity DNA Assay
Data Path: C:\...ents and Settings\Bioanalyzer\2012-03-23\2012-03-23_001.xad

Created: 3/23/2012 10:15:48 AM
Modified: 3/23/2012 11:02:50 AM

Electrophoresis File Run Summary (Chip Summary)

Sample Name	Sample Comment	Rest. Digest	Status	Observation	Result Label	Result Color
UCB 3 Lib (3/23/12)	#3	<input type="checkbox"/>	✓			
UCB 5 Lib (3/23/12)	#5	<input type="checkbox"/>	✓			
UCB 7 Lib (3/23/12)	#7	<input type="checkbox"/>	✓			
UCB 8 Lib (3/23/12)	#8	<input type="checkbox"/>	✓			
UCB 9 Lib (3/23/12)	#9	<input type="checkbox"/>	✓			
UCB 10 Lib(3/23/12)	#10	<input type="checkbox"/>	✓			
UCB 11 Lib (3/23/12)	#11	<input type="checkbox"/>	✓			
UCB 12 Lib (3/23/12)	#12	<input type="checkbox"/>	✓			
GP17Br3		<input type="checkbox"/>	✓			
DEAMK8#1		<input type="checkbox"/>	✓			
DEAMK8#2		<input type="checkbox"/>	✓			
Ladder		<input type="checkbox"/>	✓			

Chip Lot #

Reagent Kit Lot #

Chip Comments :

Assay Class: High Sensitivity DNA Assay
Data Path: C:\...ents and Settings\Bioanalyzer\2012-03-23\2012-03-23_001.xad

Created: 3/23/2012 10:15:48 AM
Modified: 3/23/2012 11:02:50 AM

Electrophoresis Assay Details

General Analysis Settings

Number of Available Sample and Ladder Wells (Max.) : 12
Minimum Visible Range [s] : 32
Maximum Visible Range [s] : 138
Start Analysis Time Range [s] : 33
End Analysis Time Range [s] : 137.5
Ladder Concentration [pg/μl] : 1950
Uses Standard Area for Ladder Fragments
Lower Marker Concentration [pg/μl] : 125
Upper Marker Concentration [pg/μl] : 75
Used Upper Marker for Quantitation
Standard Curve Fit is Point to Point
Show Data Aligned to Lower and Upper Marker

Integrator Settings

Integration Start Time [s] : 33.05
Integration End Time [s] : 137
Slope Threshold : 0.8
Height Threshold [FU] : 5
Area Threshold : 0.1
Width Threshold [s] : 0.6
Baseline Plateau [s] : 0.5

Filter Settings

Filter Width [s] : 0.5
Polynomial Order : 4

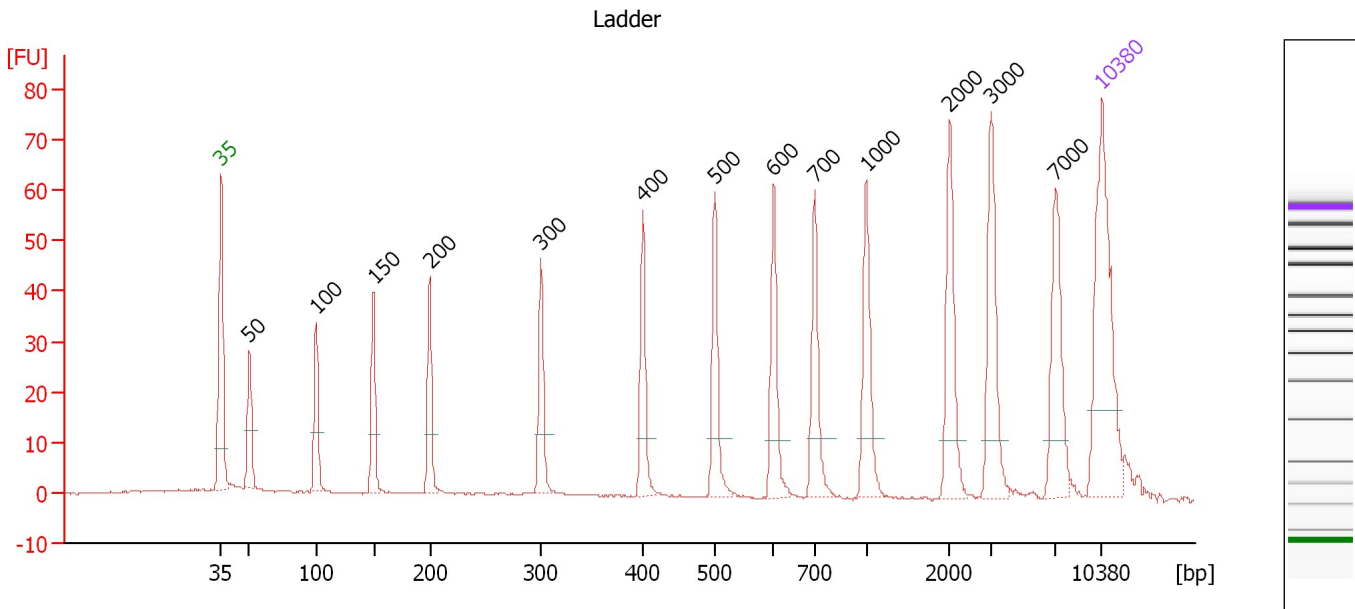
Ladder

Ladder Peak	Size	Area
1	35	160
2	50	210
3	100	208
4	150	221
5	200	242
6	300	270
7	400	305
8	500	306
9	600	336
10	700	321
11	1000	366
12	2000	413
13	3000	411
14	7000	400
15	10380	214

Assay Class: High Sensitivity DNA Assay
 Data Path: C:\...ents and Settings\Bioanalyzer\2012-03-23\2012-03-23_001.xad

Created: 3/23/2012 10:15:48 AM
 Modified: 3/23/2012 11:02:50 AM

Electropherogram Summary



Overall Results for Ladder

Noise: 0.2

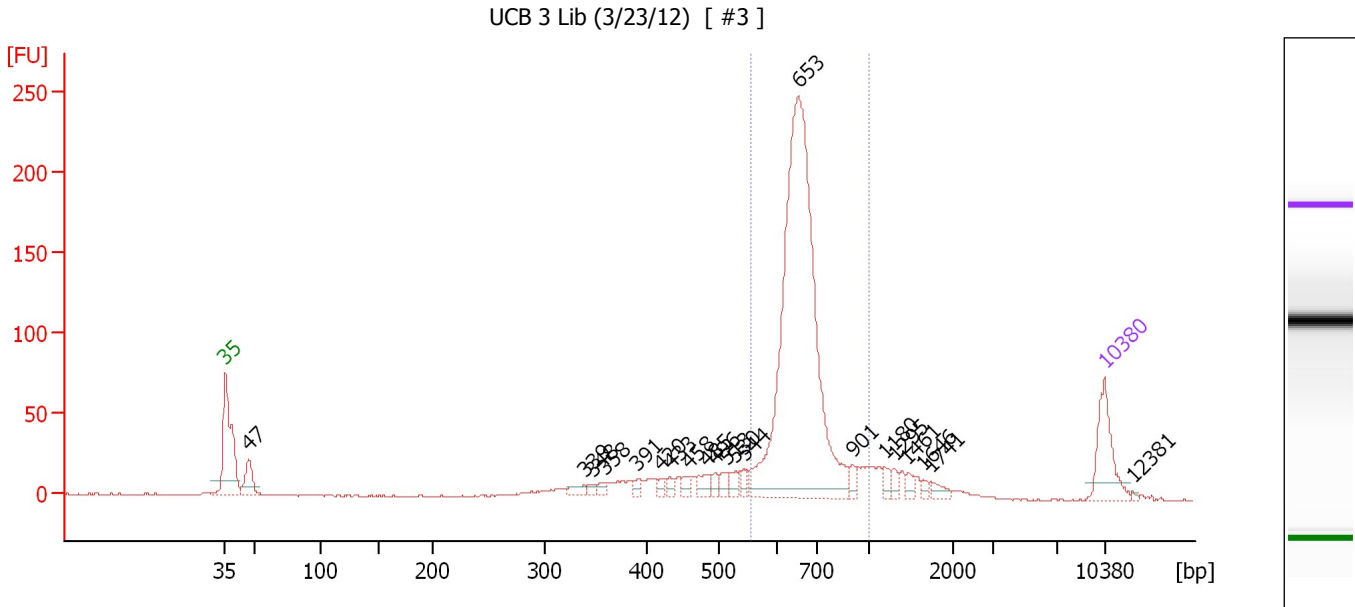
Peak table for Ladder

Peak	Size [bp]	Conc. [pg/μl]	Molarity [pmol/l]	Observations
1	35	125.00	5,411.3	Lower Marker
2	50	150.00	4,545.5	Ladder Peak
3	100	150.00	2,272.7	Ladder Peak
4	150	150.00	1,515.2	Ladder Peak
5	200	150.00	1,136.4	Ladder Peak
6	300	150.00	757.6	Ladder Peak
7	400	150.00	568.2	Ladder Peak
8	500	150.00	454.5	Ladder Peak
9	600	150.00	378.8	Ladder Peak
10	700	150.00	324.7	Ladder Peak
11	1,000	150.00	227.3	Ladder Peak
12	2,000	150.00	113.6	Ladder Peak
13	3,000	150.00	75.8	Ladder Peak
14	7,000	150.00	32.5	Ladder Peak
15	10,380	75.00	10.9	Upper Marker

Assay Class: High Sensitivity DNA Assay
 Data Path: C:\...ents and Settings\Bioanalyzer\2012-03-23\2012-03-23_001.xad

Created: 3/23/2012 10:15:48 AM
 Modified: 3/23/2012 11:02:50 AM

Electropherogram Summary Continued ...



Overall Results for sample 1 : UCB 3 Lib (3/23/12)

Number of peaks found: 21 Corr. Area 1: 902.1
 Noise: 0.2

Peak table for sample 1 : UCB 3 Lib (3/23/12)

Peak	Size [bp]	Conc. [pg/μl]	Molarity [pmol/l]	Observations
1	35	125.00	5,411.3	Lower Marker
2	47	60.69	1,937.0	
3	339	15.26	68.2	
4	348	9.00	39.2	
5	358	11.04	46.7	
6	391	9.15	35.5	
7	420	9.55	34.4	
8	433	10.75	37.6	
9	458	14.88	49.2	
10	485	24.02	75.1	
11	496	12.68	38.7	
12	513	17.56	51.8	
13	530	16.13	46.1	
14	544	13.91	38.7	
15	653	970.20	2,250.5	
16	901	14.65	24.6	
17	1,180	14.27	18.3	
18	1,295	10.79	12.6	
19	1,461	10.18	10.6	
20	1,646	5.95	5.5	
21	1,741	12.53	10.9	
22	10,380	75.00	10.9	Upper Marker
23	12,381	0.00	0.0	


Assay Class: High Sensitivity DNA Assay
Data Path: C:\...ents and Settings\Bioanalyzer\2012-03-23\2012-03-23_001.xad

Created: 3/23/2012 10:15:48 AM
Modified: 3/23/2012 11:02:50 AM

Electropherogram Summary Continued ...

... Region table for sample 1 :

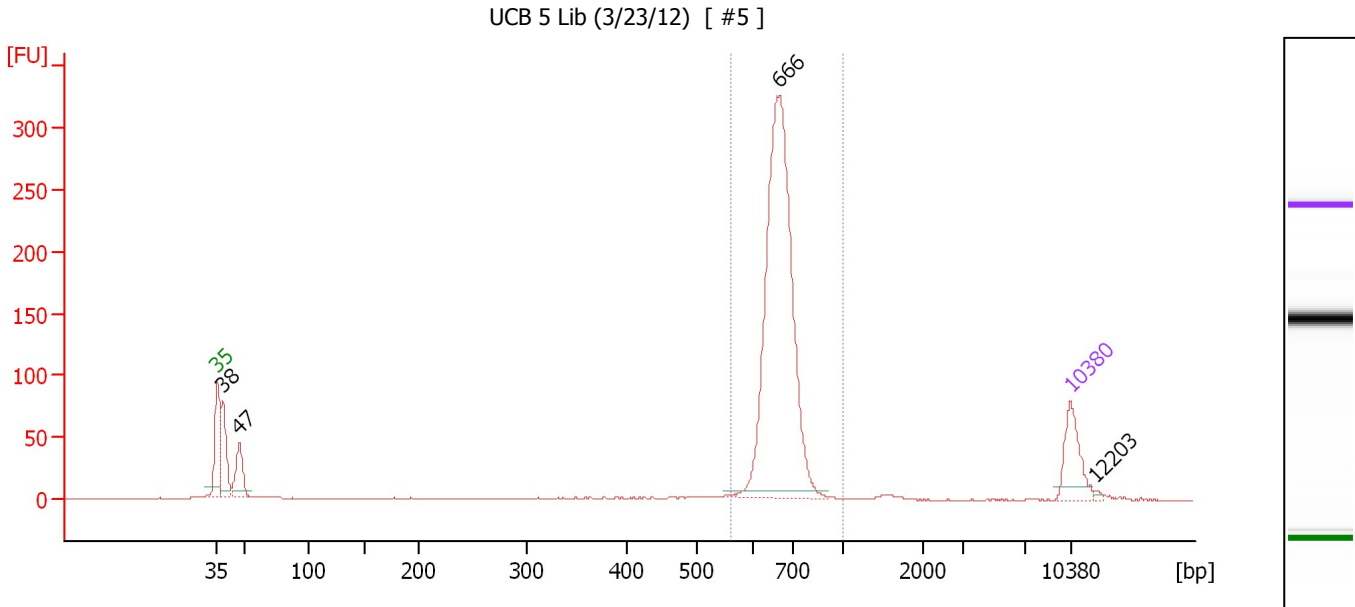
UCB 3 Lib (3/23/12)

From [bp]	Molarity [pmol/l]	Average Size [bp]	Conc. [pg/μl]	To [bp]	Corr. Area	% of Total	Size distribution in CV [%]	Co lor
556	2,299.3	671	1,008.50	1,000	902.1	69	11.3	

Assay Class: High Sensitivity DNA Assay
 Data Path: C:\...ents and Settings\Bioanalyzer\2012-03-23\2012-03-23_001.xad

Created: 3/23/2012 10:15:48 AM
 Modified: 3/23/2012 11:02:50 AM

Electropherogram Summary Continued ...



Overall Results for sample 2 : UCB 5 Lib (3/23/12)

Number of peaks found: 4 Corr. Area 1: 955.3
 Noise: 0.2

Peak table for sample 2 : UCB 5 Lib (3/23/12)

Peak	Size [bp]	Conc. [pg/μl]	Molarity [pmol/l]	Observations
1	35	125.00	5,411.3	Lower Marker
2	38	140.84	5,627.5	
3	47	103.70	3,344.7	
4	666	895.61	2,038.6	
5	10,380	75.00	10.9	Upper Marker
6	12,203	0.00	0.0	

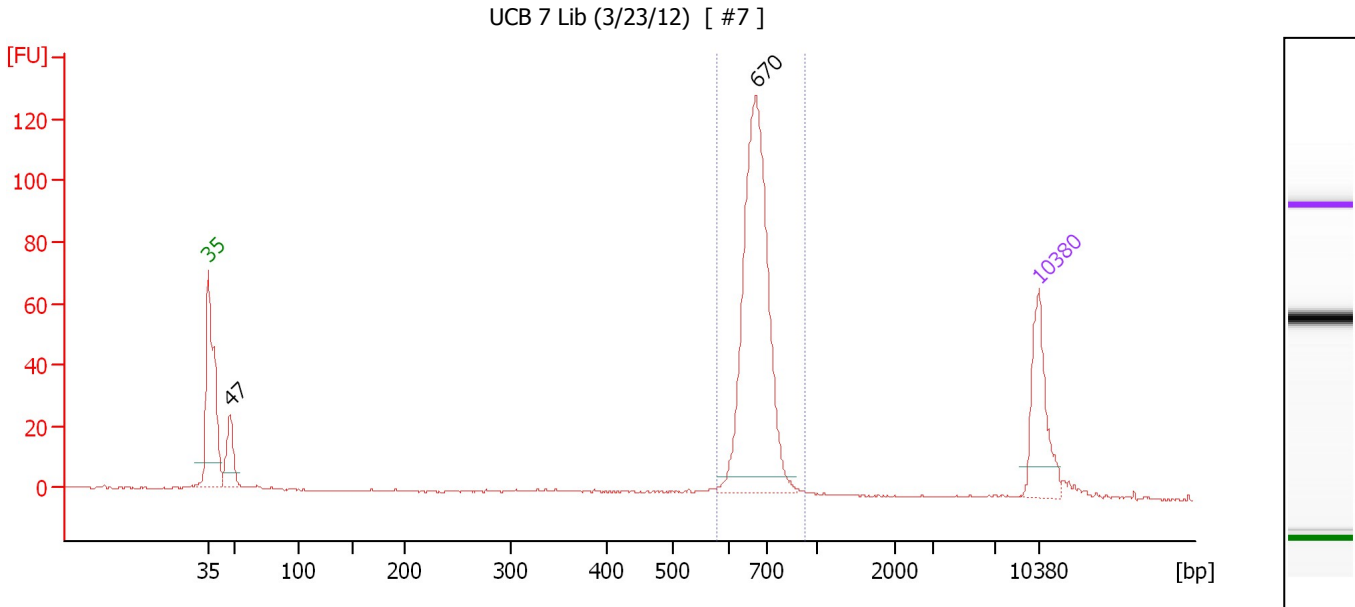
Region table for sample 2 : UCB 5 Lib (3/23/12)

From [bp]	Molarity [pmol/l]	Average Size [bp]	Conc. [pg/μl]	To [bp]	Corr. Area	% of Total	Size distribution in CV [%]	Color
560	2,057.7	671	908.67	1,000	955.3	76	6.5	Blue

Assay Class: High Sensitivity DNA Assay
 Data Path: C:\...ents and Settings\Bioanalyzer\2012-03-23\2012-03-23_001.xad

Created: 3/23/2012 10:15:48 AM
 Modified: 3/23/2012 11:02:50 AM

Electropherogram Summary Continued ...



Overall Results for sample 3 : UCB 7 Lib (3/23/12)

Number of peaks found: 2 Corr. Area 1: 365.3
 Noise: 0.2

Peak table for sample 3 : UCB 7 Lib (3/23/12)

Peak	Size [bp]	Conc. [pg/μl]	Molarity [pmol/l]	Observations
1	35	125.00	5,411.3	Lower Marker
2	47	69.04	2,210.9	
3	670	423.09	957.2	
4	10,380	75.00	10.9	Upper Marker

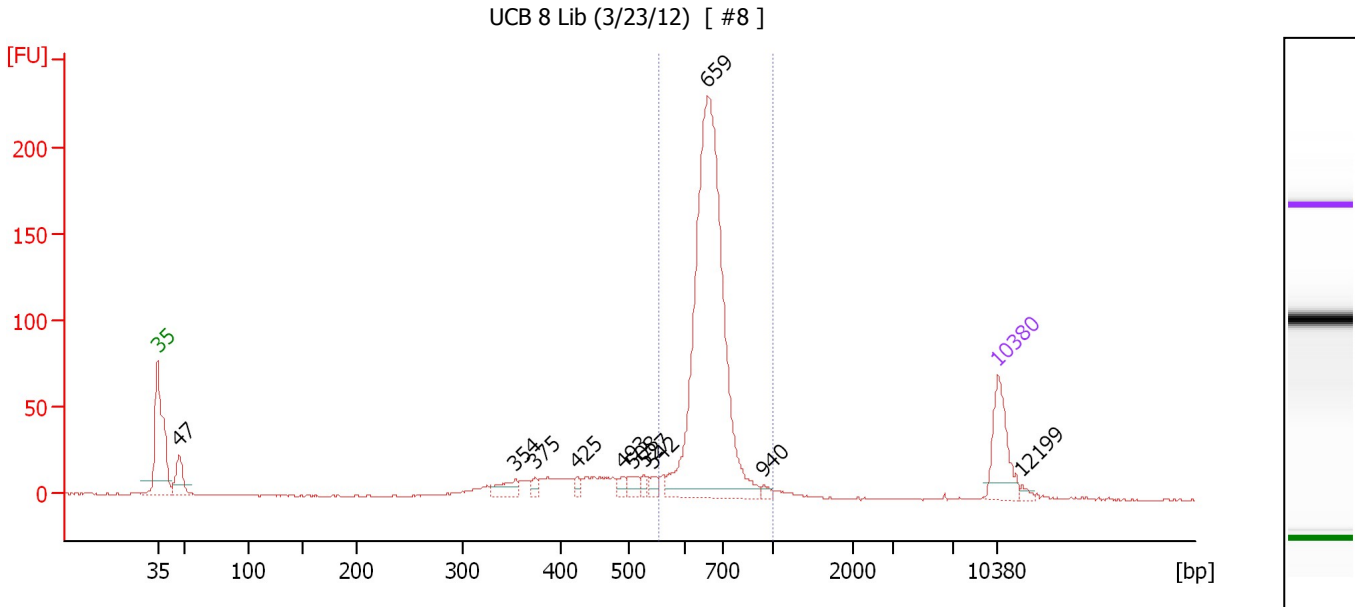
Region table for sample 3 : UCB 7 Lib (3/23/12)

From [bp]	Molarity [pmol/l]	Average Size [bp]	Conc. [pg/μl]	To [bp]	Corr. Area	% of Total	Size distribution in CV [%]	Color
579	959.2	674	425.68	927	365.3	85	6.1	Blue

Assay Class: High Sensitivity DNA Assay
 Data Path: C:\...ents and Settings\Bioanalyzer\2012-03-23\2012-03-23_001.xad

Created: 3/23/2012 10:15:48 AM
 Modified: 3/23/2012 11:02:50 AM

Electropherogram Summary Continued ...



Overall Results for sample 4 : UCB 8 Lib (3/23/12)

Number of peaks found: 11 Corr. Area 1: 733.4
 Noise: 0.3

Peak table for sample 4 : UCB 8 Lib (3/23/12)

Peak	Size [bp]	Conc. [pg/μl]	Molarity [pmol/l]	Observations
1	35	125.00	5,411.3	Lower Marker
2	47	64.52	2,073.0	
3	354	30.91	132.2	
4	375	11.95	48.4	
5	425	10.32	36.8	
6	493	14.84	45.6	
7	508	18.14	54.1	
8	527	10.39	29.9	
9	542	11.39	31.8	
10	659	811.92	1,866.4	
11	940	6.92	11.2	
12	10,380	75.00	10.9	Upper Marker
13	12,199	0.00	0.0	

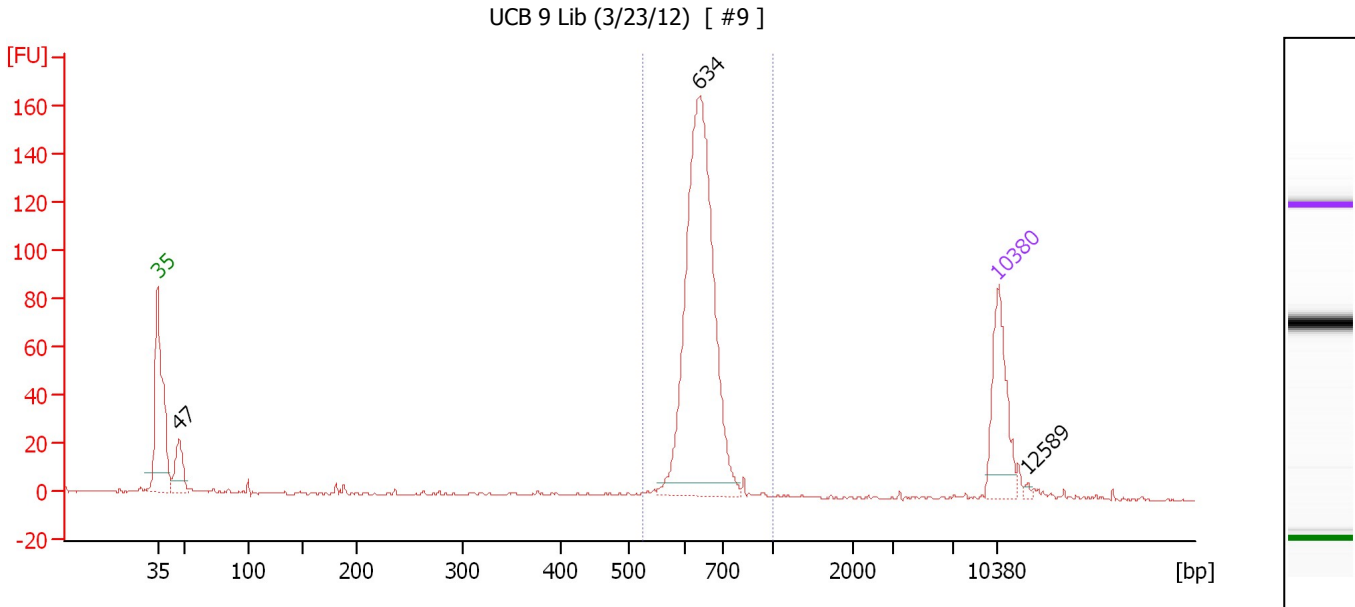
Region table for sample 4 : UCB 8 Lib (3/23/12)

From [bp]	Molarity [pmol/l]	Average Size [bp]	Conc. [pg/μl]	To [bp]	Corr. Area	% of Total	Size distribution in CV [%]	Color
555	1,869.0	670	822.05	1,000	733.4	74	8.5	Blue

Assay Class: High Sensitivity DNA Assay
 Data Path: C:\...ents and Settings\Bioanalyzer\2012-03-23\2012-03-23_001.xad

Created: 3/23/2012 10:15:48 AM
 Modified: 3/23/2012 11:02:50 AM

Electropherogram Summary Continued ...



Overall Results for sample 5 : UCB 9 Lib (3/23/12)

Number of peaks found: 3 Corr. Area 1: 525.4
 Noise: 0.5

Peak table for sample 5 : UCB 9 Lib (3/23/12)

Peak	Size [bp]	Conc. [pg/μl]	Molarity [pmol/l]	Observations
1	35	125.00	5,411.3	Lower Marker
2	47	54.83	1,774.9	
3	634	467.39	1,116.8	
4	10,380	75.00	10.9	Upper Marker
5	12,589	0.00	0.0	

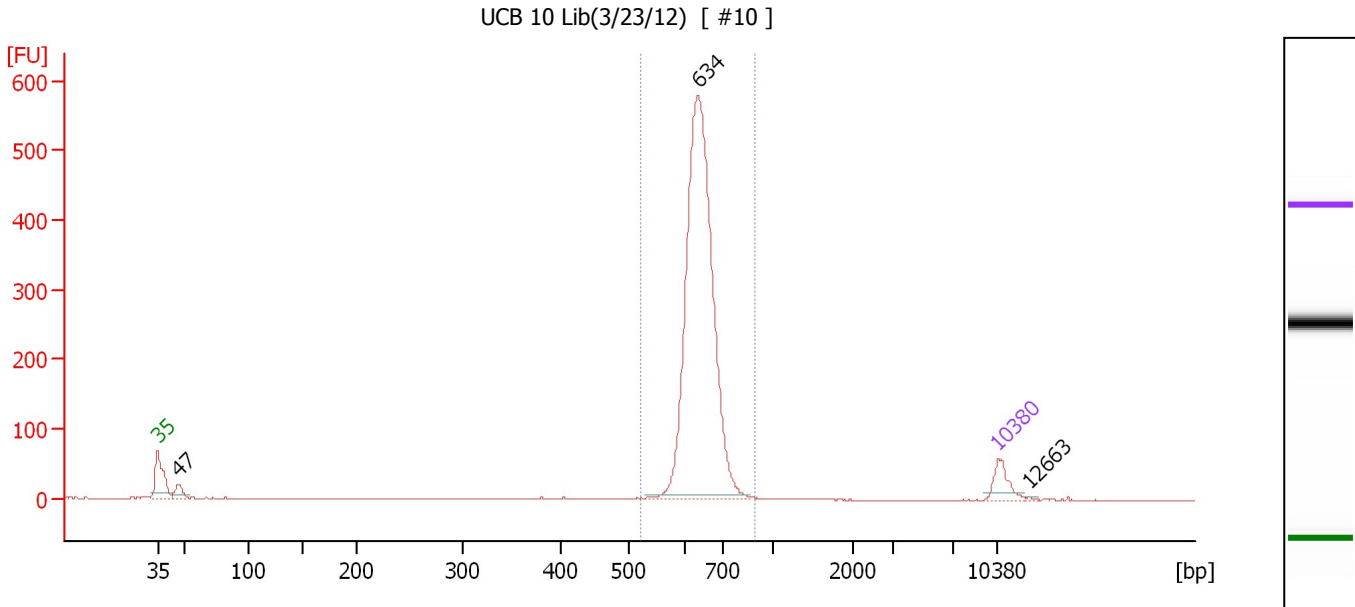
Region table for sample 5 : UCB 9 Lib (3/23/12)

From [bp]	Molarity [pmol/l]	Average Size [bp]	Conc. [pg/μl]	To [bp]	Corr. Area	% of Total	Size distribution in CV [%]	Color
524	1,133.1	642	478.79	1,000	525.4	84	6.5	Blue

Assay Class: High Sensitivity DNA Assay
 Data Path: C:\...ents and Settings\Bioanalyzer\2012-03-23\2012-03-23_001.xad

Created: 3/23/2012 10:15:48 AM
 Modified: 3/23/2012 11:02:50 AM

Electropherogram Summary Continued ...



Overall Results for sample 6 : UCB 10 Lib(3/23/12)

Number of peaks found: 3 Corr. Area 1: 1,716.3
 Noise: 0.3

Peak table for sample 6 : UCB 10 Lib(3/23/12)

Peak	Size [bp]	Conc. [pg/μl]	Molarity [pmol/l]	Observations
1	35	125.00	5,411.3	Lower Marker
2	47	64.95	2,109.6	
3	634	2,177.97	5,206.0	
4	10,380	75.00	10.9	Upper Marker
5	12,663	0.00	0.0	

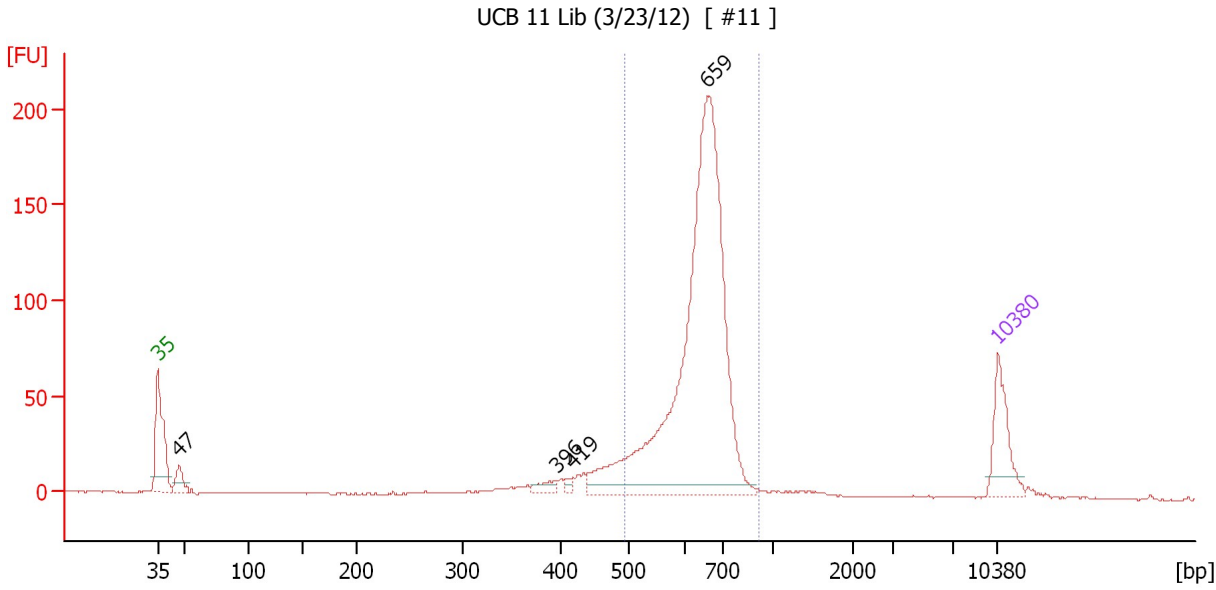
Region table for sample 6 : UCB 10 Lib(3/23/12)

From [bp]	Molarity [pmol/l]	Average Size [bp]	Conc. [pg/μl]	To [bp]	Corr. Area	% of Total	Size distribution in CV [%]	Color
522	5,200.5	641	2,196.37	890	1,716.3	95	5.6	Blue

Assay Class: High Sensitivity DNA Assay
 Data Path: C:\...ents and Settings\Bioanalyzer\2012-03-23\2012-03-23_001.xad

Created: 3/23/2012 10:15:48 AM
 Modified: 3/23/2012 11:02:50 AM

Electropherogram Summary Continued ...



Overall Results for sample 7 : UCB 11 Lib (3/23/12)

Number of peaks found: 4 Corr. Area 1: 892.1
 Noise: 0.2

Peak table for sample 7 : UCB 11 Lib (3/23/12)

Peak	Size [bp]	Conc. [pg/μl]	Molarity [pmol/l]	Observations
1	35	125.00	5,411.3	Lower Marker
2	47	40.99	1,318.6	
3	396	18.26	69.9	
4	419	8.49	30.7	
5	659	1,035.80	2,382.0	
6	10,380	75.00	10.9	Upper Marker

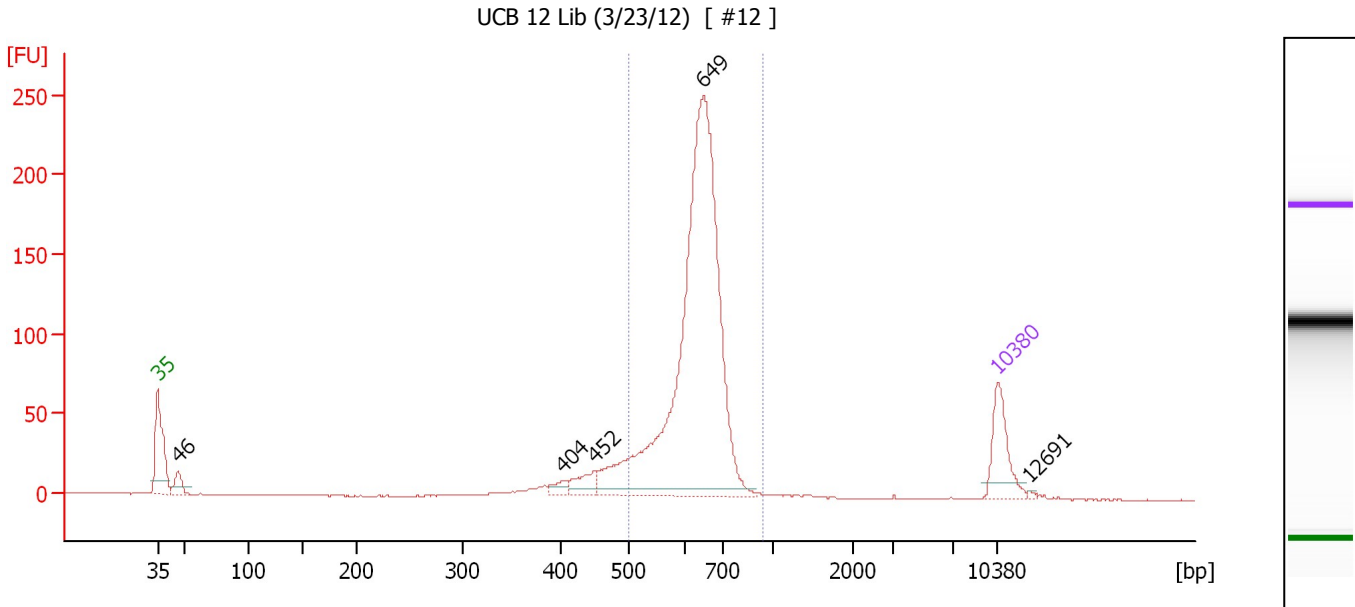
Region table for sample 7 : UCB 11 Lib (3/23/12)

From [bp]	Molarity [pmol/l]	Average Size [bp]	Conc. [pg/μl]	To [bp]	Corr. Area	% of Total	Size distribution in CV [%]	Color
496	2,376.4	643	998.32	917	892.1	81	9.7	Blue

Assay Class: High Sensitivity DNA Assay
 Data Path: C:\...ents and Settings\Bioanalyzer\2012-03-23\2012-03-23_001.xad

Created: 3/23/2012 10:15:48 AM
 Modified: 3/23/2012 11:02:50 AM

Electropherogram Summary Continued ...



Overall Results for sample 8 : UCB 12 Lib (3/23/12)

Number of peaks found: 5 Corr. Area 1: 1,026.9
 Noise: 0.2

Peak table for sample 8 : UCB 12 Lib (3/23/12)

Peak	Size [bp]	Conc. [pg/μl]	Molarity [pmol/l]	Observations
1	35	125.00	5,411.3	Lower Marker
2	46	37.45	1,221.2	
3	404	18.81	70.6	
4	452	39.74	133.3	
5	649	1,115.05	2,604.0	
6	10,380	75.00	10.9	Upper Marker
7	12,691	0.00	0.0	

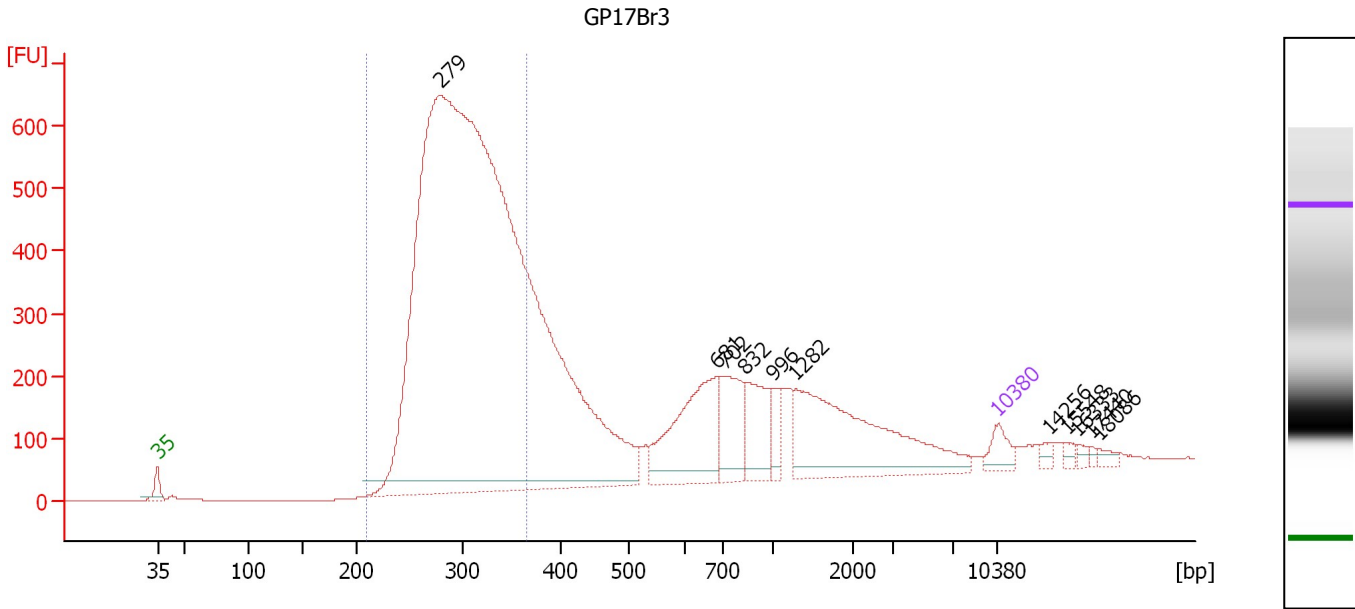
Region table for sample 8 : UCB 12 Lib (3/23/12)

From [bp]	Molarity [pmol/l]	Average Size [bp]	Conc. [pg/μl]	To [bp]	Corr. Area	% of Total	Size distribution in CV [%]	Color
501	2,573.2	635	1,071.34	940	1,026.9	85	8.8	Blue

Assay Class: High Sensitivity DNA Assay
 Data Path: C:\...ents and Settings\Bioanalyzer\2012-03-23\2012-03-23_001.xad

Created: 3/23/2012 10:15:48 AM
 Modified: 3/23/2012 11:02:50 AM

Electropherogram Summary Continued ...



Setpoint Deviations for sample 9 : GP17Br3

Height Threshold [FU] : 20

Overall Results for sample 9 : GP17Br3

Number of peaks found: 11 Corr. Area 1: 7,525.4
 Noise: 0.3

Peak table for sample 9 : GP17Br3

Peak	Size [bp]	Conc. [pg/μl]	Molarity [pmol/l]	Observations
1	35	125.00	5,411.3	Lower Marker
2	279	10,595.49	57,643.0	
3	681	649.92	1,446.7	
4	702	321.39	693.4	
5	832	279.96	509.6	
6	996	82.00	124.8	
7	1,282	870.07	1,028.1	
8	10,380	75.00	10.9	Upper Marker
9	14,256	0.00	0.0	
10	15,548	0.00	0.0	
11	16,333	0.00	0.0	
12	17,440	0.00	0.0	
13	18,086	0.00	0.0	

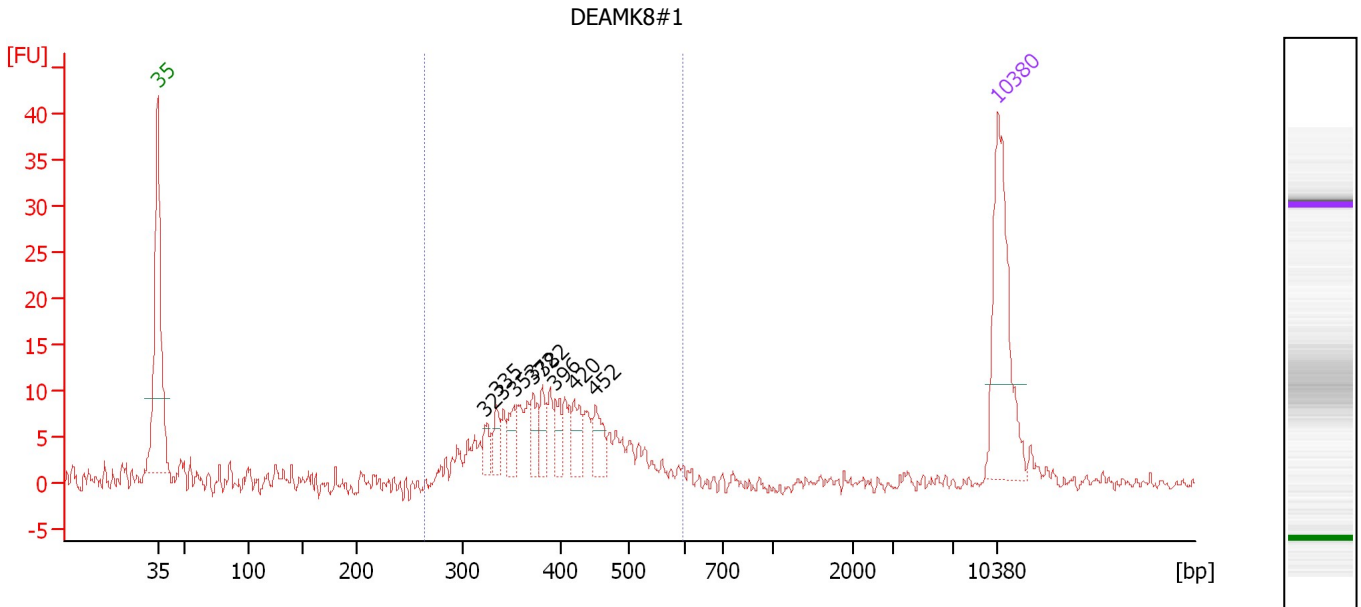
Region table for sample 9 : GP17Br3

From [bp]	Molarity [pmol/l]	Average Size [bp]	Conc. [pg/μl]	To [bp]	Corr. Area	% of Total	Size distribution in CV [%]	Color
209	38,877.4	302	7,625.96	366	7,525.4	60	10.9	Blue

Assay Class: High Sensitivity DNA Assay
 Data Path: C:\...ents and Settings\Bioanalyzer\2012-03-23\2012-03-23_001.xad

Created: 3/23/2012 10:15:48 AM
 Modified: 3/23/2012 11:02:50 AM

Electropherogram Summary Continued ...



Overall Results for sample 10 : DEAMK8#1

Number of peaks found: 8 Corr. Area 1: 103.4
 Noise: 0.6

Peak table for sample 10 : DEAMK8#1

Peak	Size [bp]	Conc. [pg/μl]	Molarity [pmol/l]	Observations
1	35	125.00	5,411.3	Lower Marker
2	323	11.04	51.7	
3	335	13.35	60.4	
4	353	16.26	69.9	
5	372	14.74	60.1	
6	382	16.18	64.1	
7	396	13.52	51.8	
8	420	20.02	72.2	
9	452	18.66	62.6	
10	10,380	75.00	10.9	Upper Marker

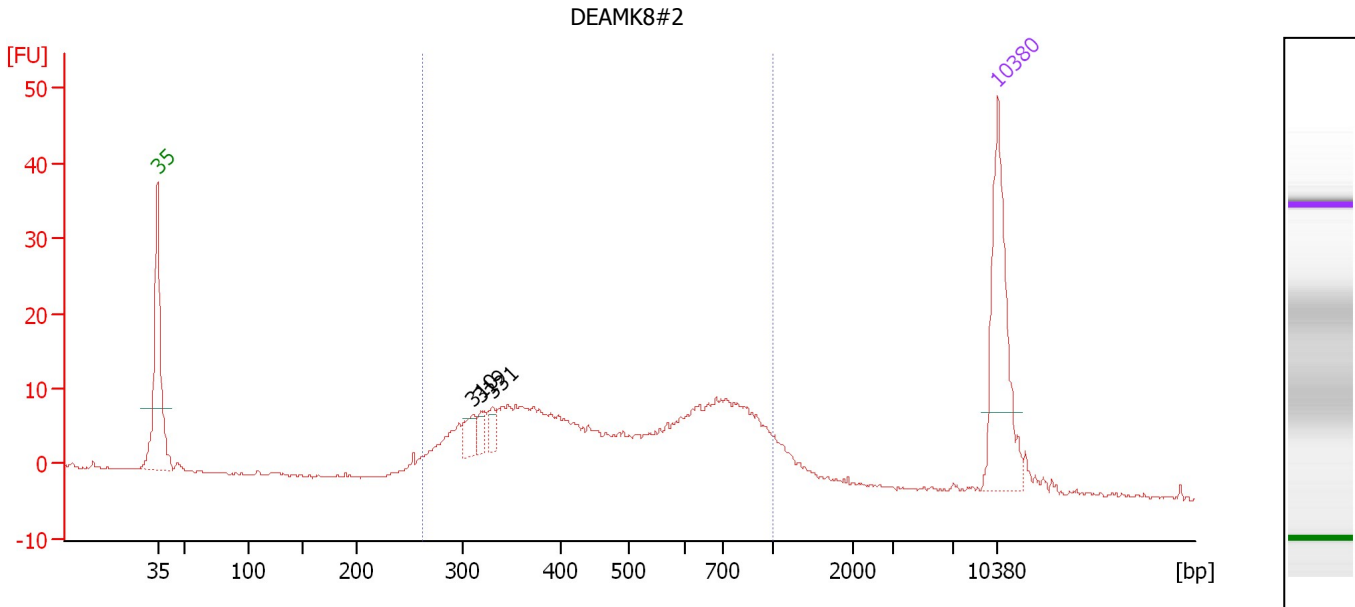
Region table for sample 10 : DEAMK8#1

From [bp]	Molarity [pmol/l]	Average Size [bp]	Conc. [pg/μl]	To [bp]	Corr. Area	% of Total	Size distribution in CV [%]	Color
263	845.8	398	216.79	597	103.4	97	14.2	Blue

Assay Class: High Sensitivity DNA Assay
 Data Path: C:\...ents and Settings\Bioanalyzer\2012-03-23\2012-03-23_001.xad

Created: 3/23/2012 10:15:48 AM
 Modified: 3/23/2012 11:02:50 AM

Electropherogram Summary Continued ...



Overall Results for sample 11 : DEAMK8#2

Number of peaks found: 3 Corr. Area 1: 279.9
 Noise: 0.2

Peak table for sample 11 : DEAMK8#2

Peak	Size [bp]	Conc. [pg/μl]	Molarity [pmol/l]	Observations
1	35	125.00	5,411.3	Lower Marker
2	310	16.07	78.5	
3	319	9.34	44.4	
4	331	9.24	42.4	
5	10,380	75.00	10.9	Upper Marker

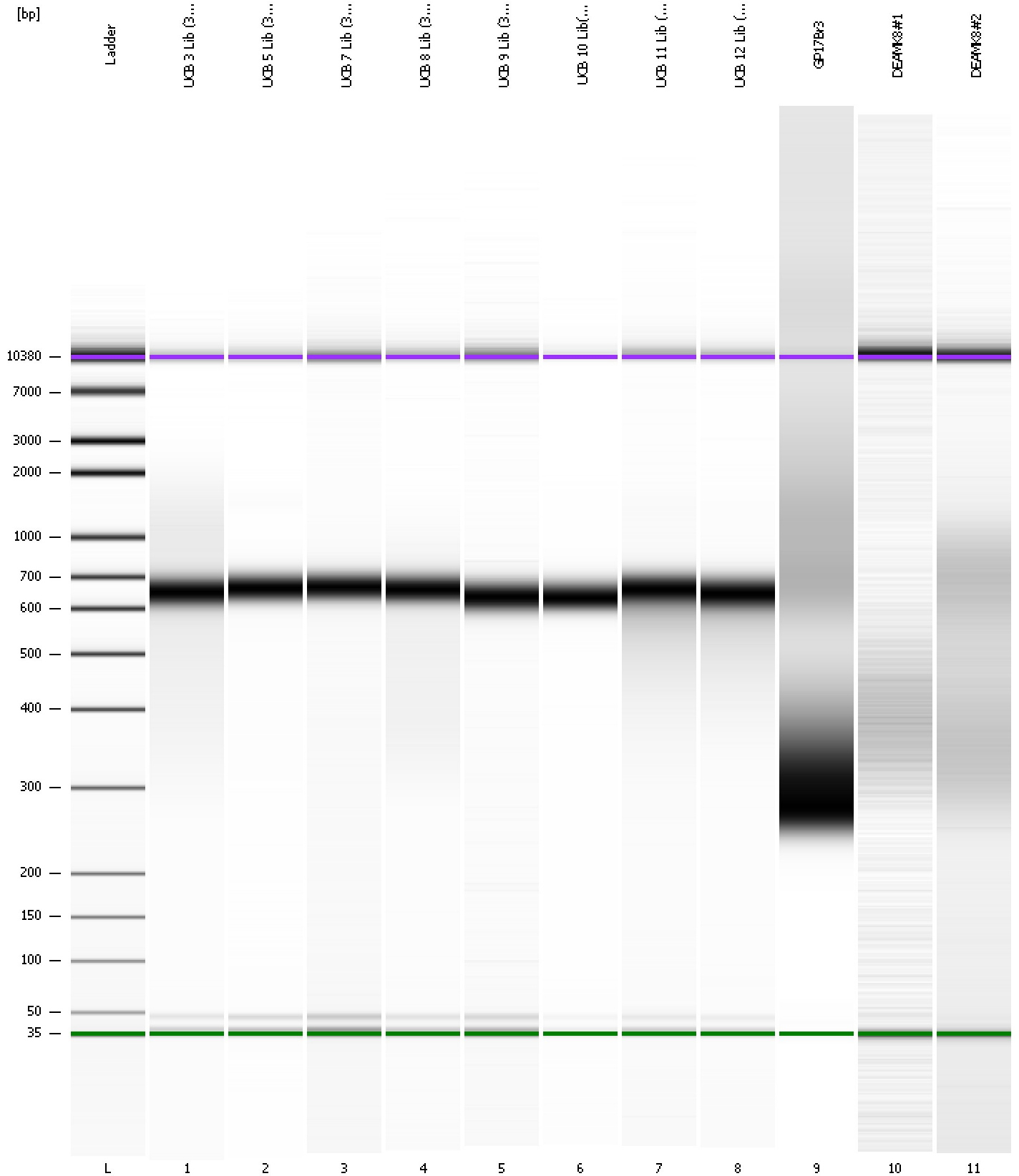
Region table for sample 11 : DEAMK8#2

From [bp]	Molarity [pmol/l]	Average Size [bp]	Conc. [pg/μl]	To [bp]	Corr. Area	% of Total	Size distribution in CV [%]	Color
261	1,636.1	516	468.25	1,000	279.9	91	36.2	Blue

Assay Class: High Sensitivity DNA Assay
Data Path: C:\...ents and Settings\Bioanalyzer\2012-03-23\2012-03-23_001.xad

Created: 3/23/2012 10:15:48 AM
Modified: 3/23/2012 11:02:50 AM

Gel Image



Assay Class: High Sensitivity DNA Assay
 Data Path: C:\...ents and Settings\Bioanalyzer\2012-03-23\2012-03-23_001.xad

Created: 3/23/2012 10:15:48 AM
 Modified: 3/23/2012 11:02:50 AM

Run Logbook

Description	Number	Source	Category	Sub Category	Time	Time Zone	User	Host
Run ended on port 1 (Number of wells acquired: 12)		Instrument	Run		3/23/2012 10:57:07 AM	(GMT --07:00) Pacific Standard Time	UC Davis	D8XSMGH1
Run started on port 1 (File: C:\Documents and Settings\Bioanalyzer\2012-03-23\2012-03-23_001.xad)		Instrument	Run		3/23/2012 10:15:54 AM	(GMT --07:00) Pacific Standard Time	UC Davis	D8XSMGH1
Product Number : G2938B		Instrument	Run		3/23/2012 10:15:54 AM	(GMT --07:00) Pacific Standard Time	UC Davis	D8XSMGH1
Name :		Instrument	Run		3/23/2012 10:15:54 AM	(GMT --07:00) Pacific Standard Time	UC Davis	D8XSMGH1
Vendor : Agilent Technologies		Instrument	Run		3/23/2012 10:15:54 AM	(GMT --07:00) Pacific Standard Time	UC Davis	D8XSMGH1
Serial# : DE13701086		Instrument	Run		3/23/2012 10:15:54 AM	(GMT --07:00) Pacific Standard Time	UC Davis	D8XSMGH1
Firmware : C.01.069		Instrument	Run		3/23/2012 10:15:54 AM	(GMT --07:00) Pacific Standard Time	UC Davis	D8XSMGH1
Cartridge : Electrode		Instrument	Run		3/23/2012 10:15:54 AM	(GMT --07:00) Pacific Standard Time	UC Davis	D8XSMGH1