

Assay Class: High Sensitivity DNA Assay
Data Path: C:\...ents and Settings\Bioanalyzer\2012-03-26\2012-03-26_001.xad

Created: 3/26/2012 9:41:17 AM
Modified: 3/26/2012 10:14:03 AM

Electrophoresis File Run Summary

Instrument Information:

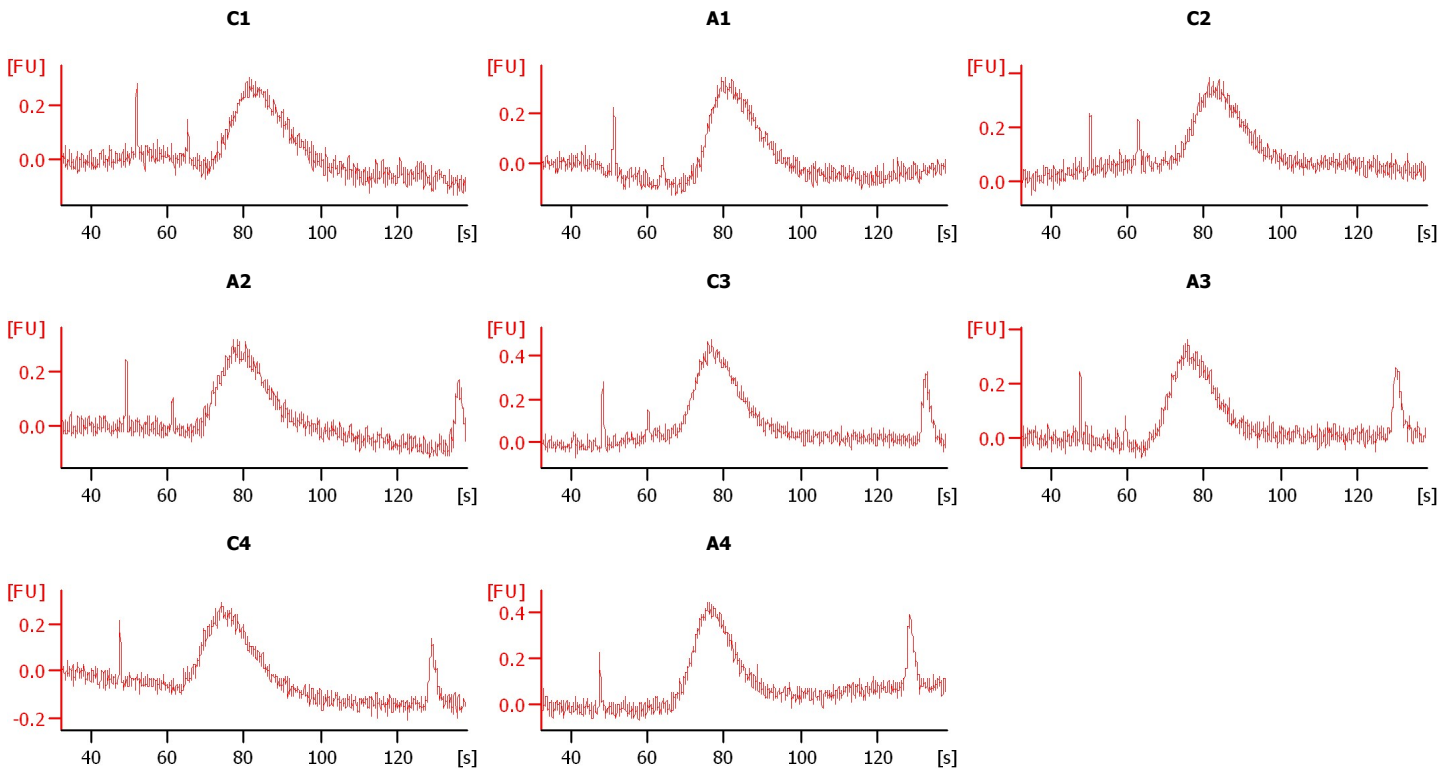
Instrument Name: DE13701086 Firmware: C.01.069
Serial#: DE13701086 Type: G2938B

Assay Information:

Assay Origin Path: C:\Program Files\Agilent\2100 bioanalyzer\2100 expert\assays\dsDNA\High Sensitivity DNA.xsy
Assay Class: High Sensitivity DNA Assay
Version: 1.03
Assay Comments: Copyright © 2003-2010 Agilent Technologies

Chip Information:

Chip Lot #:
Reagent Kit Lot #:
Chip Comments:



Assay Class: High Sensitivity DNA Assay
 Data Path: C:\...ents and Settings\Bioanalyzer\2012-03-26\2012-03-26_001.xad

Created: 3/26/2012 9:41:17 AM
 Modified: 3/26/2012 10:14:03 AM

Electrophoresis File Run Summary (Chip Summary)

Sample Name	Sample Comment	Rest. Digest	Status	Observation	Result Label	Result Color
C1		<input type="checkbox"/>	✓			
A1		<input type="checkbox"/>	✓			
C2		<input type="checkbox"/>	✓			
A2		<input type="checkbox"/>	✓			
C3		<input type="checkbox"/>	✓			
A3		<input type="checkbox"/>	✓			
C4		<input type="checkbox"/>	✓			
A4		<input type="checkbox"/>	✓			
		<input type="checkbox"/>				
		<input type="checkbox"/>				
		<input type="checkbox"/>				
Ladder		<input type="checkbox"/>	✓			

Chip Lot #

Reagent Kit Lot #

Chip Comments :

Assay Class: High Sensitivity DNA Assay
Data Path: C:\...ents and Settings\Bioanalyzer\2012-03-26\2012-03-26_001.xad

Created: 3/26/2012 9:41:17 AM
Modified: 3/26/2012 10:14:03 AM

Electrophoresis Assay Details

General Analysis Settings

Number of Available Sample and Ladder Wells (Max.) : 12
Minimum Visible Range [s] : 32
Maximum Visible Range [s] : 138
Start Analysis Time Range [s] : 33
End Analysis Time Range [s] : 137.5
Ladder Concentration [pg/μl] : 1950
Uses Standard Area for Ladder Fragments
Lower Marker Concentration [pg/μl] : 125
Upper Marker Concentration [pg/μl] : 75
Used Upper Marker for Quantitation
Standard Curve Fit is Point to Point
Show Data Aligned to Lower and Upper Marker

Integrator Settings

Integration Start Time [s] : 33.05
Integration End Time [s] : 137
Slope Threshold : 0.8
Height Threshold [FU] : 5
Area Threshold : 0.1
Width Threshold [s] : 0.6
Baseline Plateau [s] : 0.5

Filter Settings

Filter Width [s] : 0.5
Polynomial Order : 4

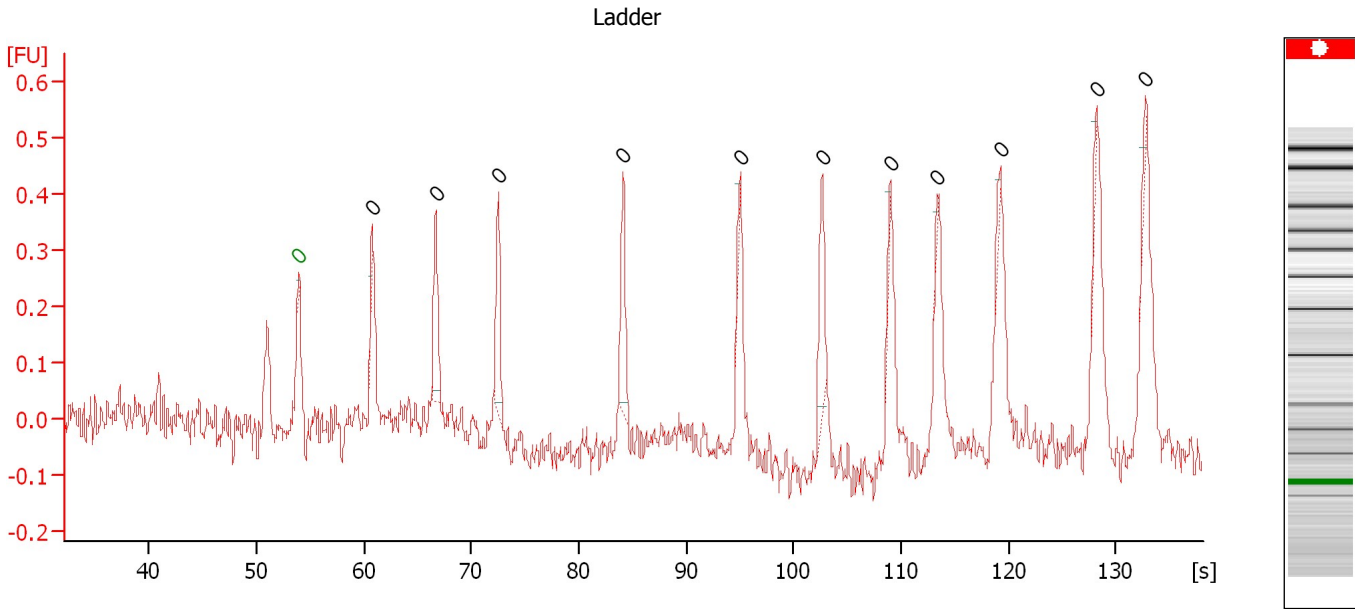
Ladder

Ladder Peak	Size	Area
1	35	160
2	50	210
3	100	208
4	150	221
5	200	242
6	300	270
7	400	305
8	500	306
9	600	336
10	700	321
11	1000	366
12	2000	413
13	3000	411
14	7000	400
15	10380	214

Assay Class: High Sensitivity DNA Assay
Data Path: C:\...ents and Settings\Bioanalyzer\2012-03-26\2012-03-26_001.xad

Created: 3/26/2012 9:41:17 AM
Modified: 3/26/2012 10:14:03 AM

Electropherogram Summary



Overall Results for Ladder

Noise: 0.0

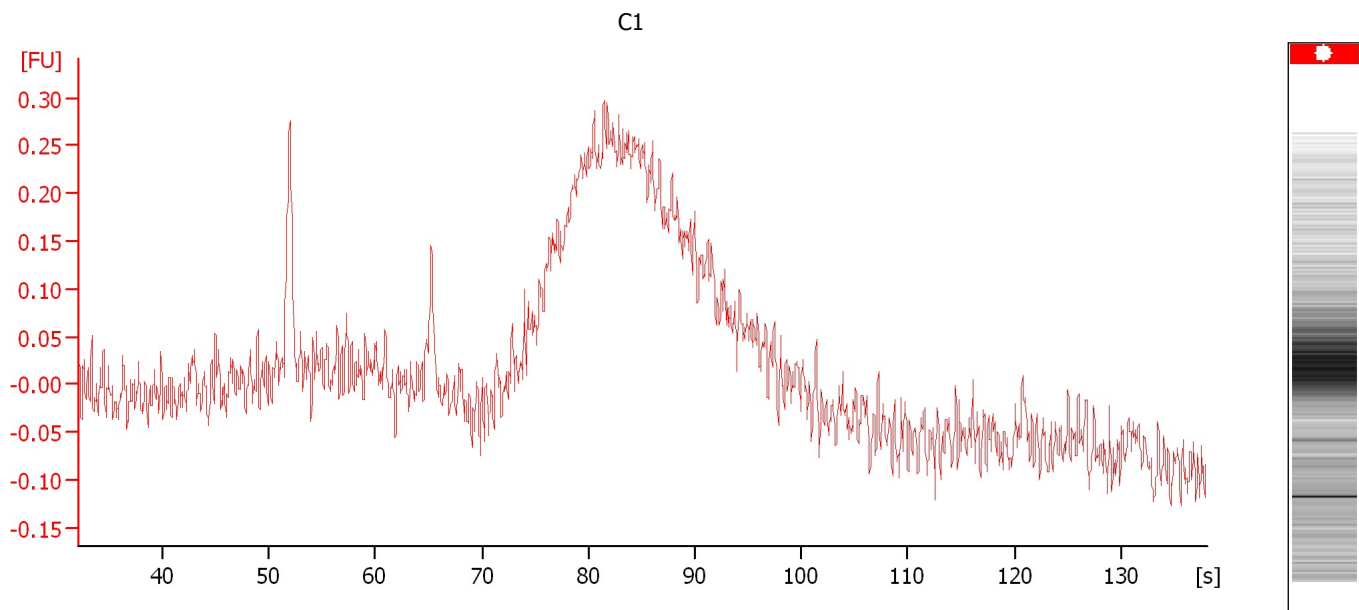
Peak table for Ladder

Peak	Size [bp]	Conc. [pg/μl]	Molarity [pmol/l]	Observations
1	0	0.00	0.0	Lower Marker
2	0	0.00	0.0	Ladder Peak
3	0	0.00	0.0	Ladder Peak
4	0	0.00	0.0	Ladder Peak
5	0	0.00	0.0	Ladder Peak
6	0	0.00	0.0	Ladder Peak
7	0	0.00	0.0	Ladder Peak
8	0	0.00	0.0	Ladder Peak
9	0	0.00	0.0	Ladder Peak
10	0	0.00	0.0	Ladder Peak
11	0	0.00	0.0	Ladder Peak
12	0	0.00	0.0	Ladder Peak

Assay Class: High Sensitivity DNA Assay
Data Path: C:\...ents and Settings\Bioanalyzer\2012-03-26\2012-03-26_001.xad

Created: 3/26/2012 9:41:17 AM
Modified: 3/26/2012 10:14:03 AM

Electropherogram Summary Continued ...



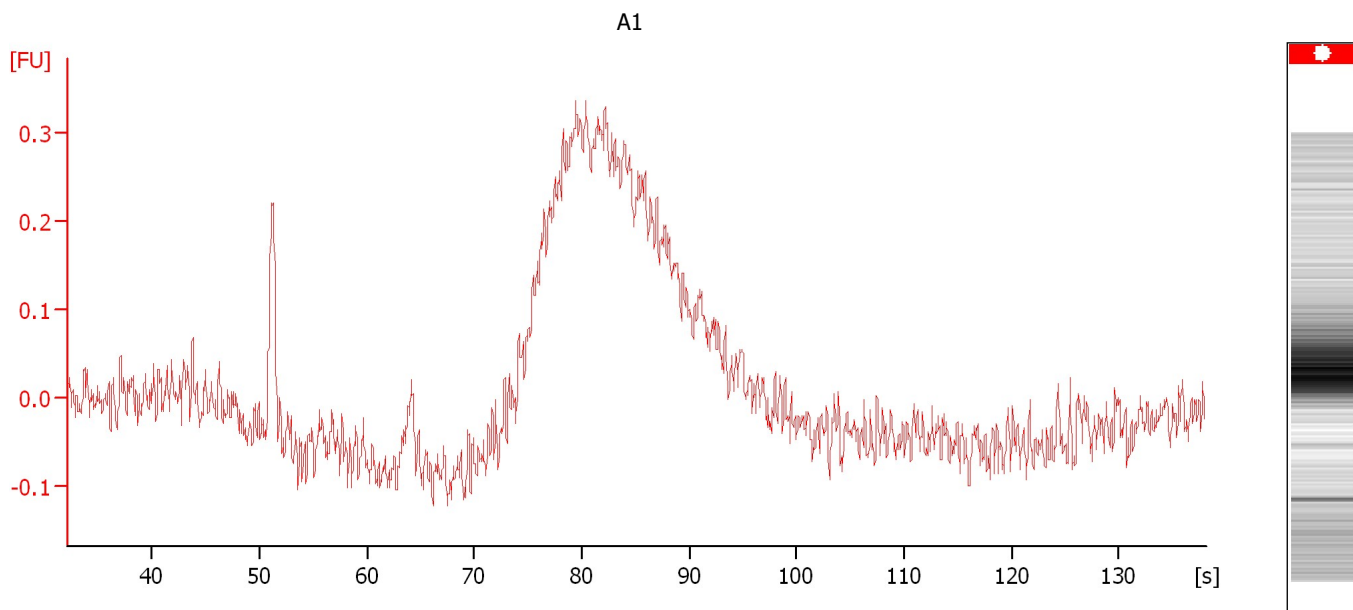
Overall Results for sample 1 : C1

Noise: 0.0

Assay Class: High Sensitivity DNA Assay
Data Path: C:\...ents and Settings\Bioanalyzer\2012-03-26\2012-03-26_001.xad

Created: 3/26/2012 9:41:17 AM
Modified: 3/26/2012 10:14:03 AM

Electropherogram Summary Continued ...



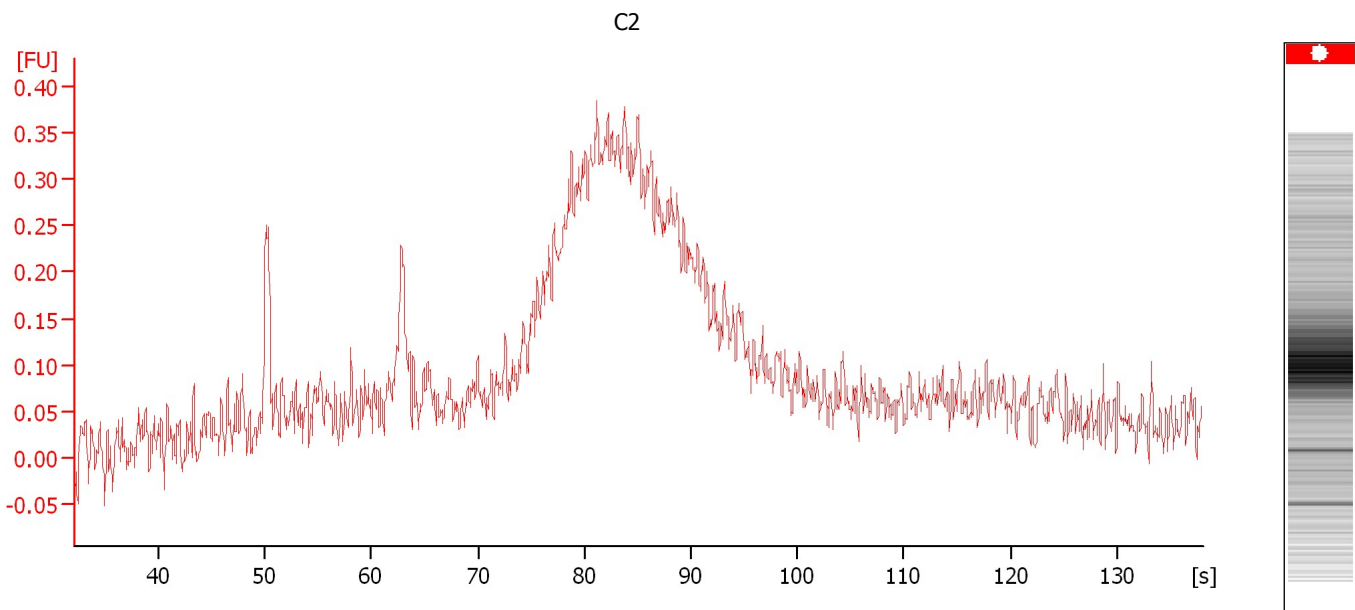
Overall Results for sample 2 : A1

Noise: 0.0

Assay Class: High Sensitivity DNA Assay
Data Path: C:\...ents and Settings\Bioanalyzer\2012-03-26\2012-03-26_001.xad

Created: 3/26/2012 9:41:17 AM
Modified: 3/26/2012 10:14:03 AM

Electropherogram Summary Continued ...



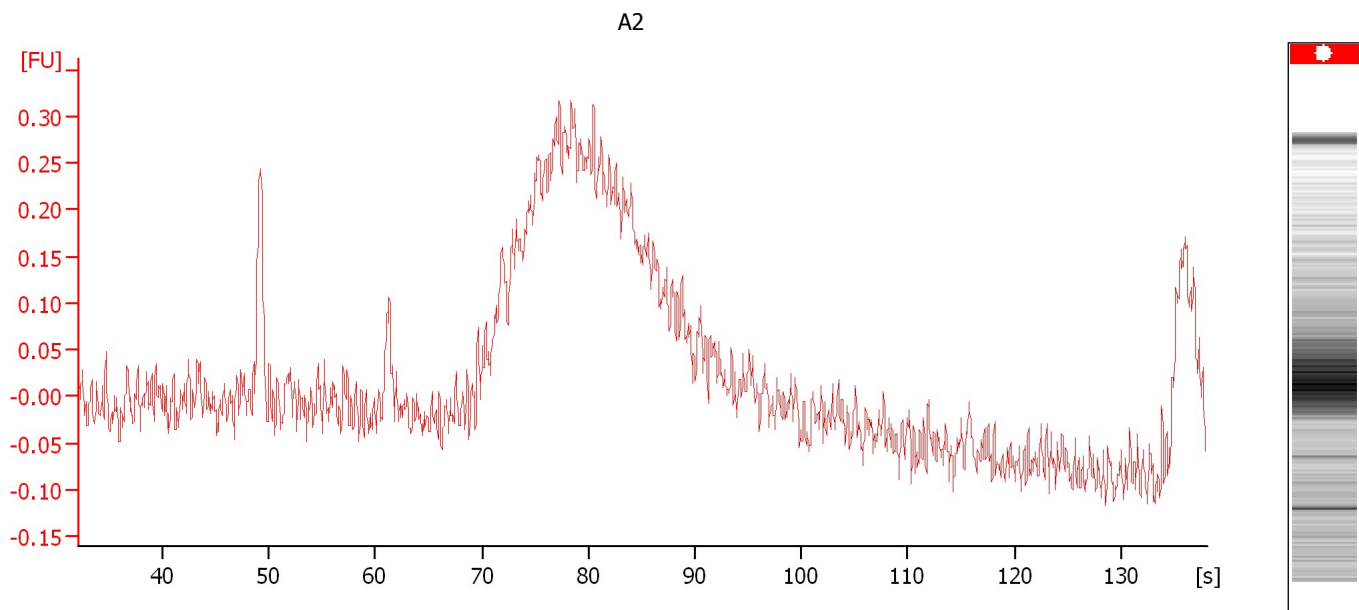
Overall Results for sample 3 : C2

Noise: 0.0

Assay Class: High Sensitivity DNA Assay
Data Path: C:\...ents and Settings\Bioanalyzer\2012-03-26\2012-03-26_001.xad

Created: 3/26/2012 9:41:17 AM
Modified: 3/26/2012 10:14:03 AM

Electropherogram Summary Continued ...



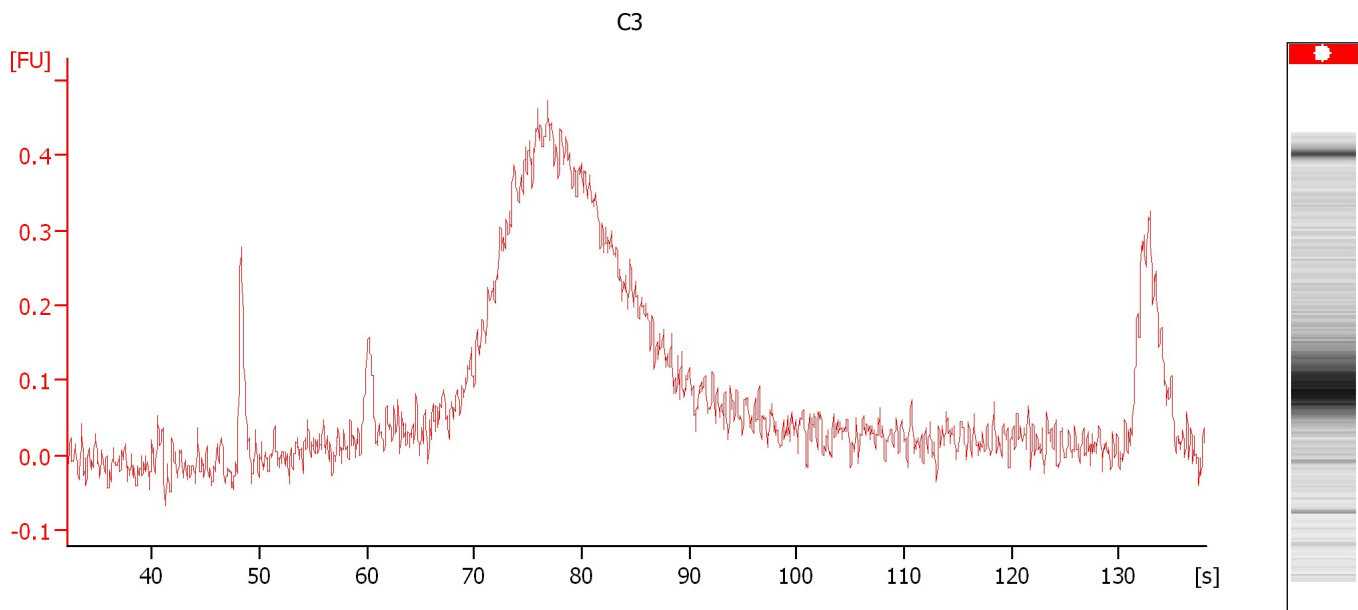
Overall Results for sample 4 : A2

Noise: 0.0

Assay Class: High Sensitivity DNA Assay
Data Path: C:\...ents and Settings\Bioanalyzer\2012-03-26\2012-03-26_001.xad

Created: 3/26/2012 9:41:17 AM
Modified: 3/26/2012 10:14:03 AM

Electropherogram Summary Continued ...



Overall Results for sample 5 : C3

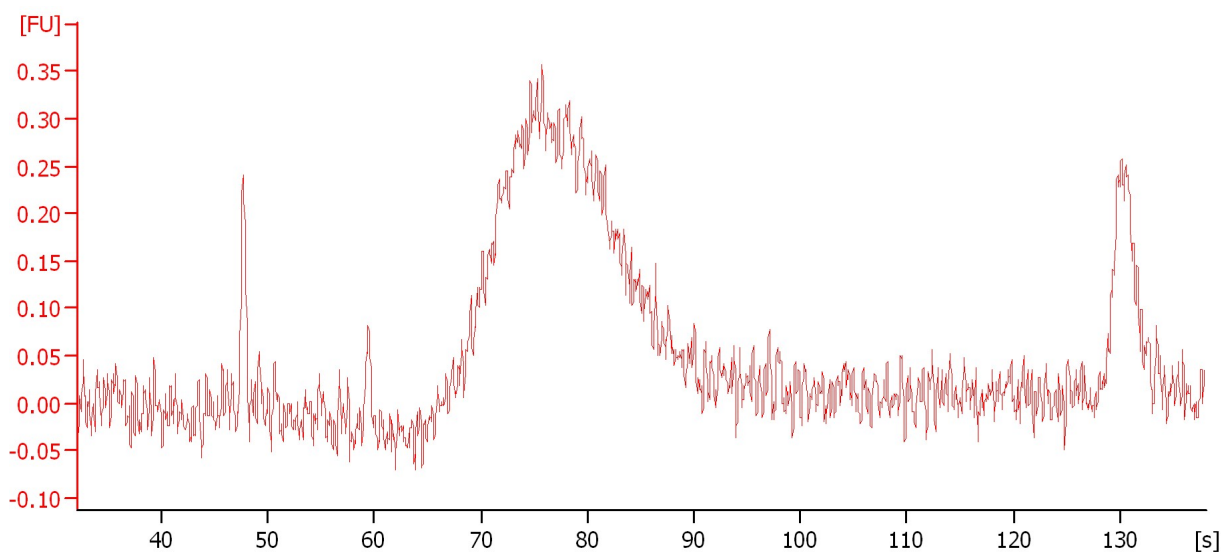
Noise: 0.0

Assay Class: High Sensitivity DNA Assay
Data Path: C:\...ents and Settings\Bioanalyzer\2012-03-26\2012-03-26_001.xad

Created: 3/26/2012 9:41:17 AM
Modified: 3/26/2012 10:14:03 AM

Electropherogram Summary Continued ...

A3



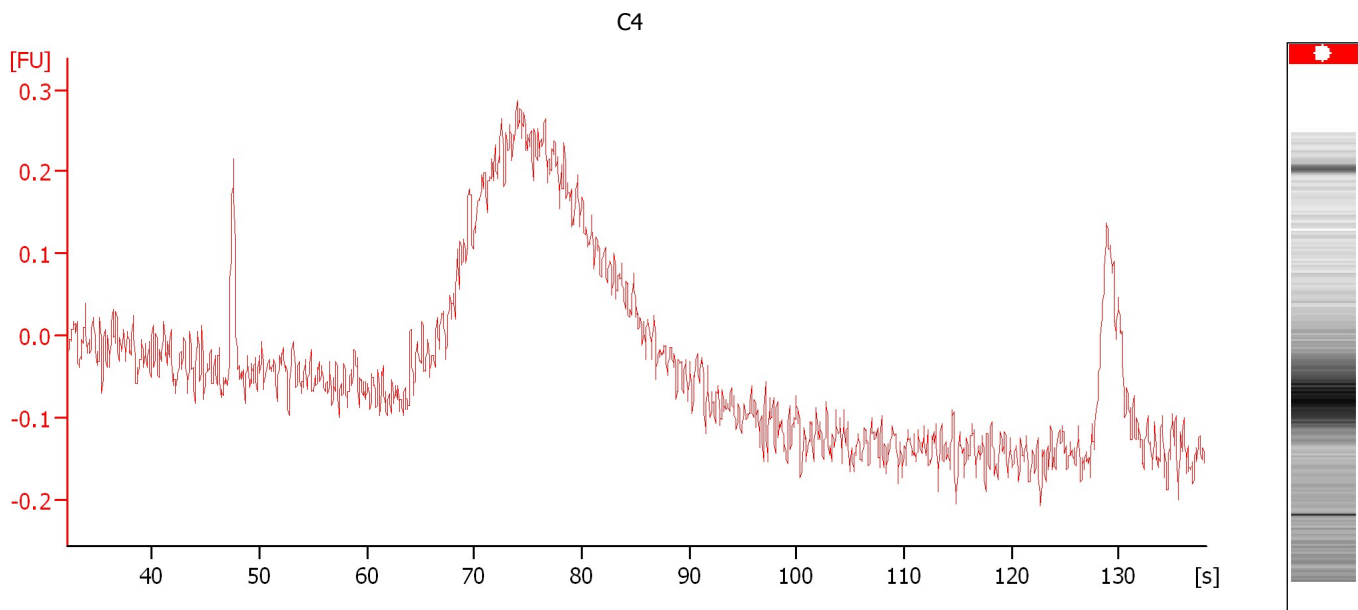
Overall Results for sample 6 : A3

Noise: 0.0

Assay Class: High Sensitivity DNA Assay
Data Path: C:\...ents and Settings\Bioanalyzer\2012-03-26\2012-03-26_001.xad

Created: 3/26/2012 9:41:17 AM
Modified: 3/26/2012 10:14:03 AM

Electropherogram Summary Continued ...



Overall Results for sample 7 : C4

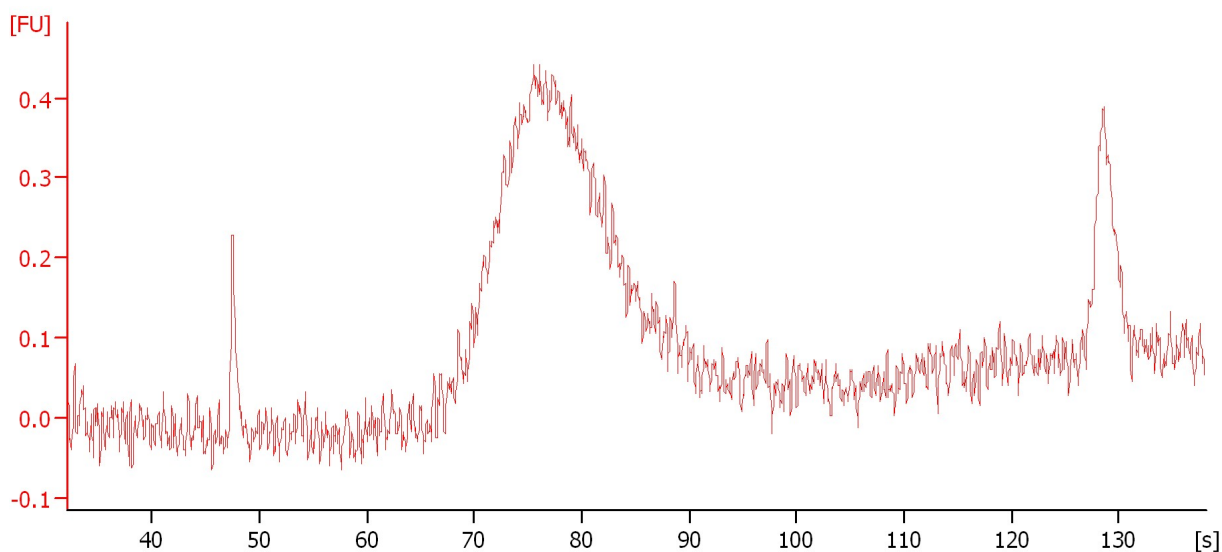
Noise: 0.0

Assay Class: High Sensitivity DNA Assay
Data Path: C:\...ents and Settings\Bioanalyzer\2012-03-26\2012-03-26_001.xad

Created: 3/26/2012 9:41:17 AM
Modified: 3/26/2012 10:14:03 AM

Electropherogram Summary Continued ...

A4



Overall Results for sample 8 : A4

Noise: 0.0

Assay Class: High Sensitivity DNA Assay
Data Path: C:\...ents and Settings\Bioanalyzer\2012-03-26\2012-03-26_001.xad

Created: 3/26/2012 9:41:17 AM
Modified: 3/26/2012 10:14:03 AM

Gel Image

Assay Class: High Sensitivity DNA Assay
Data Path: C:\...ents and Settings\Bioanalyzer\2012-03-26\2012-03-26_001.xad

Created: 3/26/2012 9:41:17 AM
Modified: 3/26/2012 10:14:03 AM

Invalid Samples

Sample 9 has not been run, no results available.

Sample 10 has not been run, no results available.

Sample 11 has not been run, no results available.

Assay Class: High Sensitivity DNA Assay
 Data Path: C:\...ents and Settings\Bioanalyzer\2012-03-26\2012-03-26_001.xad

Created: 3/26/2012 9:41:17 AM
 Modified: 3/26/2012 10:14:03 AM

Run Logbook

Description	Number	Source	Category	Sub Category	Time	Time Zone	User	Host
Run ended on port 1 (Number of wells acquired: 9)		Instrument	Run		3/26/2012 10:14:00 AM	(GMT --07:00) Pacific Standard Time	UC Davis	D8XSMGH1
Run started on port 1 (File: C:\Documents and Settings\Bioanalyzer\2012-03-26\2012-03-26_001.xad)		Instrument	Run		3/26/2012 9:41:22 AM	(GMT --07:00) Pacific Standard Time	UC Davis	D8XSMGH1
Product Number : G2938B		Instrument	Run		3/26/2012 9:41:22 AM	(GMT --07:00) Pacific Standard Time	UC Davis	D8XSMGH1
Name :		Instrument	Run		3/26/2012 9:41:22 AM	(GMT --07:00) Pacific Standard Time	UC Davis	D8XSMGH1
Vendor : Agilent Technologies		Instrument	Run		3/26/2012 9:41:22 AM	(GMT --07:00) Pacific Standard Time	UC Davis	D8XSMGH1
Serial# : DE13701086		Instrument	Run		3/26/2012 9:41:22 AM	(GMT --07:00) Pacific Standard Time	UC Davis	D8XSMGH1
Firmware : C.01.069		Instrument	Run		3/26/2012 9:41:22 AM	(GMT --07:00) Pacific Standard Time	UC Davis	D8XSMGH1
Cartridge : Electrode		Instrument	Run		3/26/2012 9:41:22 AM	(GMT --07:00) Pacific Standard Time	UC Davis	D8XSMGH1