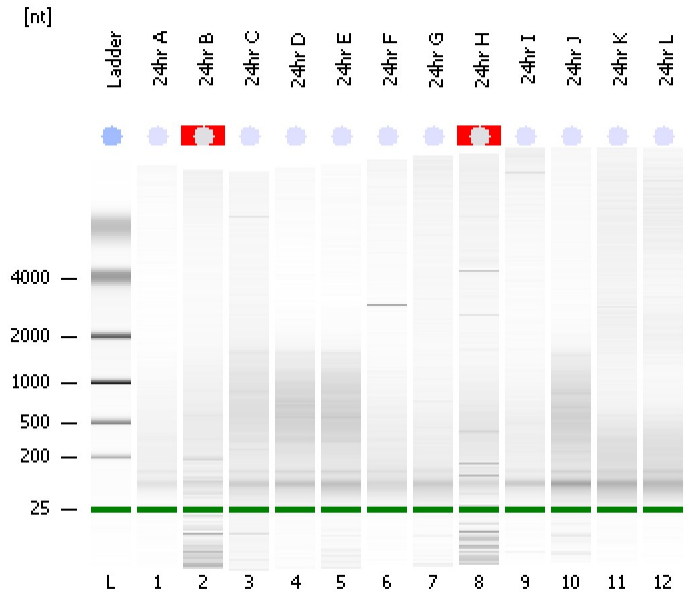


Assay Class: Eukaryote Total RNA Nano
Data Path: C:\...ents and Settings\Bioanalyzer\2012-03-27\2012-03-27_001.xad

Created: 3/27/2012 9:40:04 AM
Modified: 3/27/2012 10:03:53 AM

Electrophoresis File Run Summary



Instrument Information:

Instrument Name: DE13701086 Firmware: C.01.069
Serial#: DE13701086 Type: G2938B

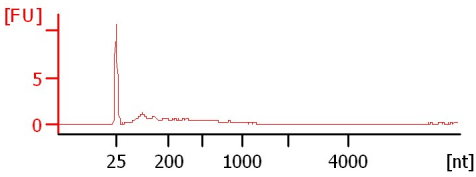
Assay Information:

Assay Origin Path: C:\Program Files\Agilent\2100 bioanalyzer\2100 expert\assays\RNA\Eukaryote Total RNA Nano Series II.xsy
Assay Class: Eukaryote Total RNA Nano
Version: 2.6
Assay Comments: Total RNA Analysis ng sensitivity (Eukaryote)
© Copyright 2003 - 2009 Agilent Technologies, Inc.

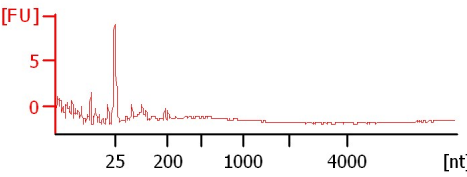
Chip Information:

Chip Lot #:
Reagent Kit Lot #:
Chip Comments:

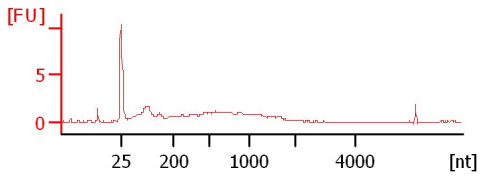
24hr A
RIN: 1.20



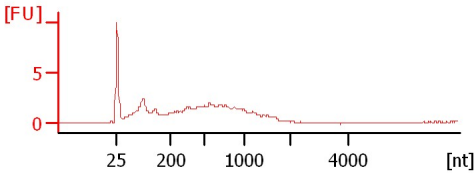
24hr B
RIN N/A



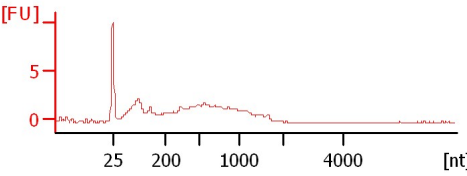
24hr C
RIN: 1.70



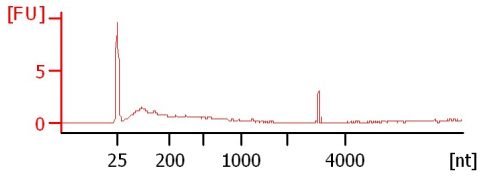
24hr D
RIN: 2.10



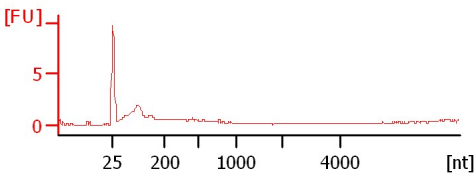
24hr E
RIN: 2.10



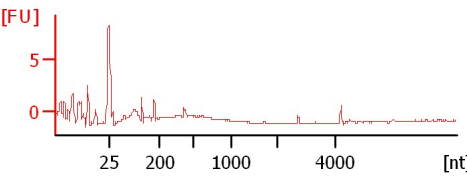
24hr F
RIN: 2.70



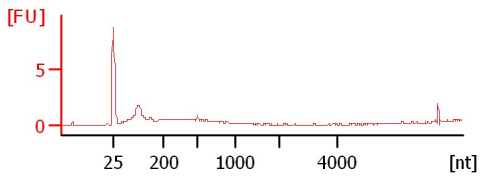
24hr G
RIN: 1.90



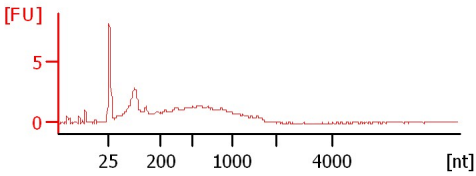
24hr H
RIN N/A



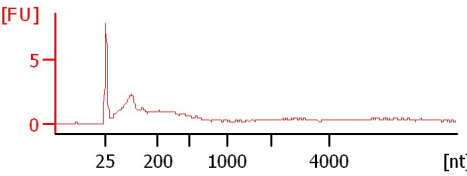
24hr I
RIN: 1.90



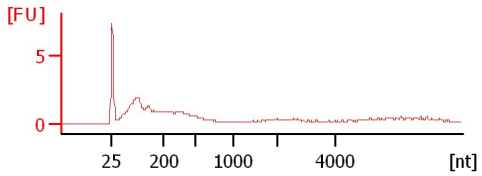
24hr J
RIN: 2.30



24hr K
RIN: 2.30



24hr L
RIN: 2.20



Assay Class: Eukaryote Total RNA Nano
Data Path: C:\...ents and Settings\Bioanalyzer\2012-03-27\2012-03-27_001.xad

Created: 3/27/2012 9:40:04 AM
Modified: 3/27/2012 10:03:53 AM

Electrophoresis File Run Summary (Chip Summary)

Sample Name	Sample Comment	Status	Result Label	Result Color
24hr A		✓	RIN: 1.20	
24hr B		✓	RIN N/A	
24hr C		✓	RIN: 1.70	
24hr D		✓	RIN: 2.10	
24hr E		✓	RIN: 2.10	
24hr F		✓	RIN: 2.70	
24hr G		✓	RIN: 1.90	
24hr H		✓	RIN N/A	
24hr I		✓	RIN: 1.90	
24hr J		✓	RIN: 2.30	
24hr K		✓	RIN: 2.30	
24hr L		✓	RIN: 2.20	
Ladder		✓	All Other Samples	

Chip Lot #

Reagent Kit Lot #

Chip Comments :

Assay Class: Eukaryote Total RNA Nano
Data Path: C:\...ents and Settings\Bioanalyzer\2012-03-27\2012-03-27_001.xad

Created: 3/27/2012 9:40:04 AM
Modified: 3/27/2012 10:03:53 AM

Electrophoresis Assay Details

General Analysis Settings

Number of Available Sample and Ladder Wells (Max.) : 13
Minimum Visible Range [s] : 17
Maximum Visible Range [s] : 70
Start Analysis Time Range [s] : 19
End Analysis Time Range [s] : 69
Ladder Concentration [ng/μl] : 150
Lower Marker Concentration [ng/μl] : 0
Upper Marker Concentration [ng/μl] : 0
Used Lower Marker for Quantitation
Standard Curve Fit is Logarithmic
Show Data Aligned to Lower Marker

Integrator Settings

Integration Start Time [s] : 19
Integration End Time [s] : 69
Slope Threshold : 0.6
Height Threshold [FU] : 0.5
Area Threshold : 0.2
Width Threshold [s] : 0.5
Baseline Plateau [s] : 6

Filter Settings

Filter Width [s] : 0.5
Polynomial Order : 4

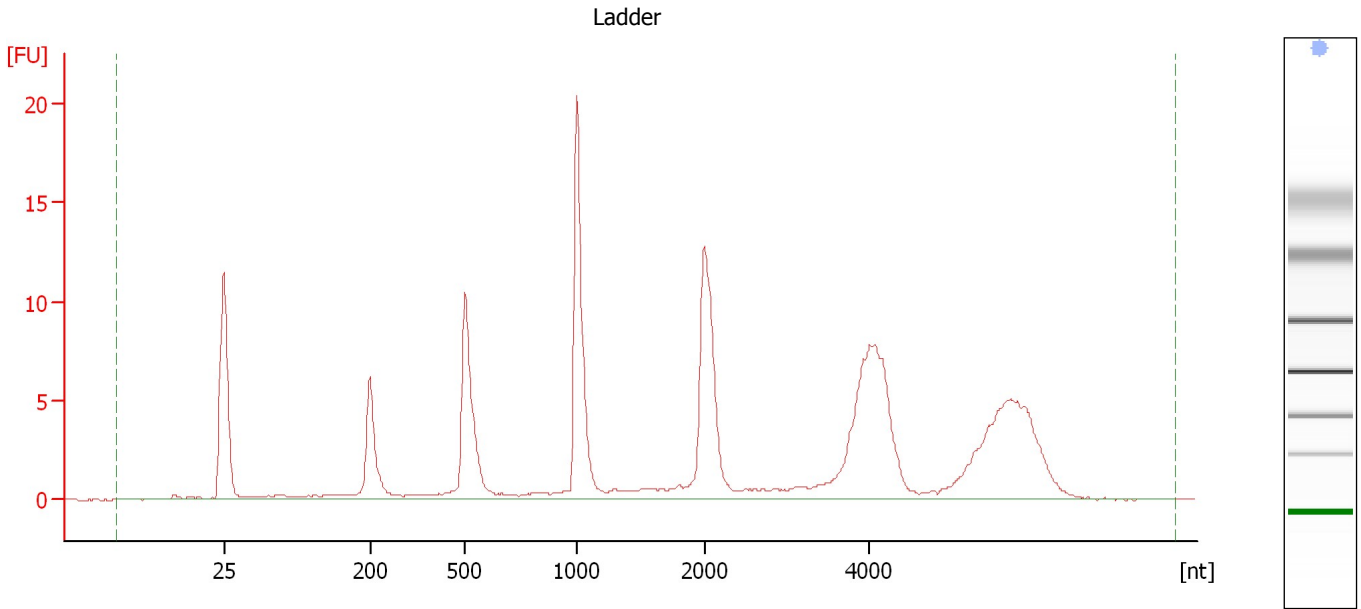
Ladder

Ladder Peak	Size
1	25
2	200
3	500
4	1000
5	2000
6	4000

Assay Class: Eukaryote Total RNA Nano
Data Path: C:\...ents and Settings\Bioanalyzer\2012-03-27\2012-03-27_001.xad

Created: 3/27/2012 9:40:04 AM
Modified: 3/27/2012 10:03:53 AM

Electropherogram Summary



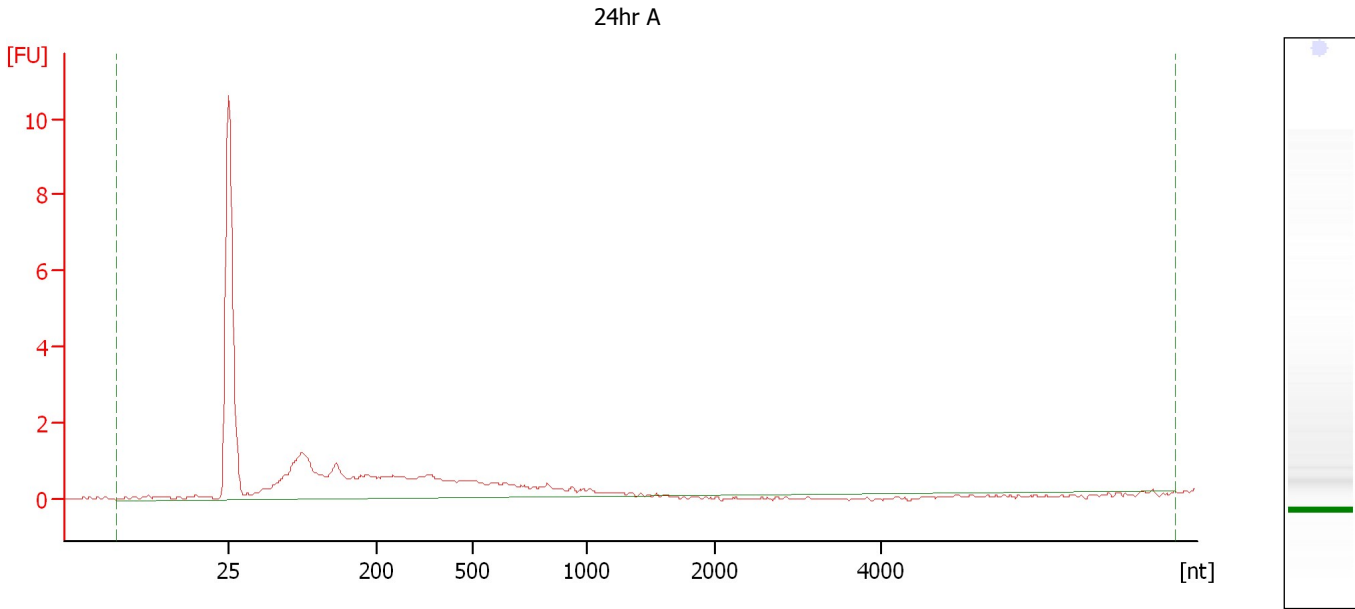
Overall Results for Ladder

RNA Area:	141.6	Result Flagging Color:	
RNA Concentration:	150 ng/μl	Result Flagging Label:	All Other Samples

Assay Class: Eukaryote Total RNA Nano
Data Path: C:\...ents and Settings\Bioanalyzer\2012-03-27\2012-03-27_001.xad

Created: 3/27/2012 9:40:04 AM
Modified: 3/27/2012 10:03:53 AM

Electropherogram Summary Continued ...



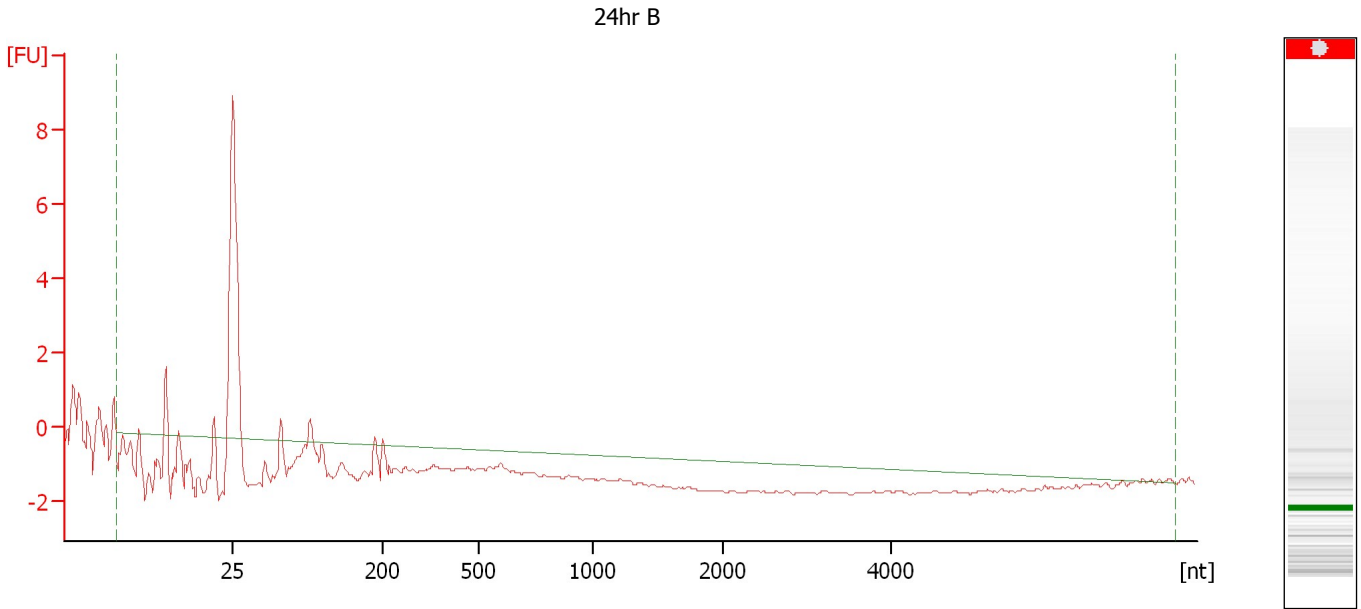
Overall Results for sample 1 : 24hr A

RNA Area:	24.8	RNA Integrity Number (RIN):	1.2 (B.02.08)
RNA Concentration:	26 ng/μl	Result Flagging Color:	
rRNA Ratio [28s / 18s]:	0.0	Result Flagging Label:	RIN: 1.20

Assay Class: Eukaryote Total RNA Nano
Data Path: C:\...ents and Settings\Bioanalyzer\2012-03-27\2012-03-27_001.xad

Created: 3/27/2012 9:40:04 AM
Modified: 3/27/2012 10:03:53 AM

Electropherogram Summary Continued ...



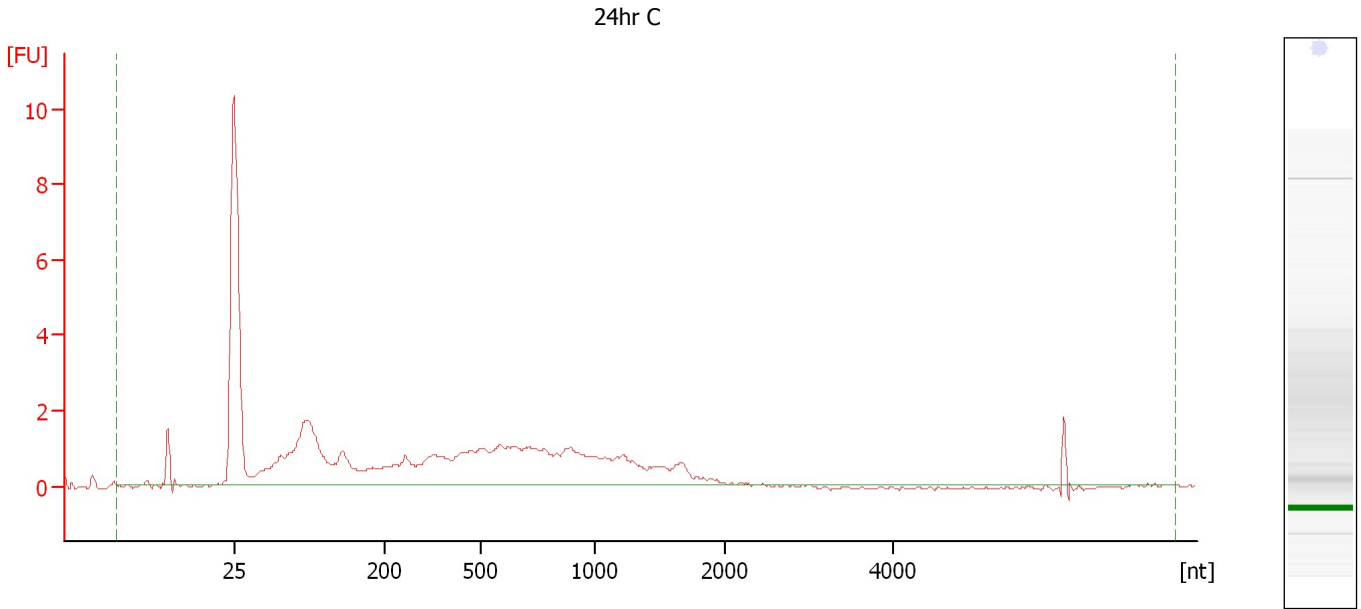
Overall Results for sample 2 : 24hr B

RNA Area:	2.7	RNA Integrity Number (RIN):	N/A (B.02.08)
RNA Concentration:	3 ng/μl	Result Flagging Color:	
rRNA Ratio [28s / 18s]:	0.0	Result Flagging Label:	RIN N/A

Assay Class: Eukaryote Total RNA Nano
Data Path: C:\...ents and Settings\Bioanalyzer\2012-03-27\2012-03-27_001.xad

Created: 3/27/2012 9:40:04 AM
Modified: 3/27/2012 10:03:53 AM

Electropherogram Summary Continued ...



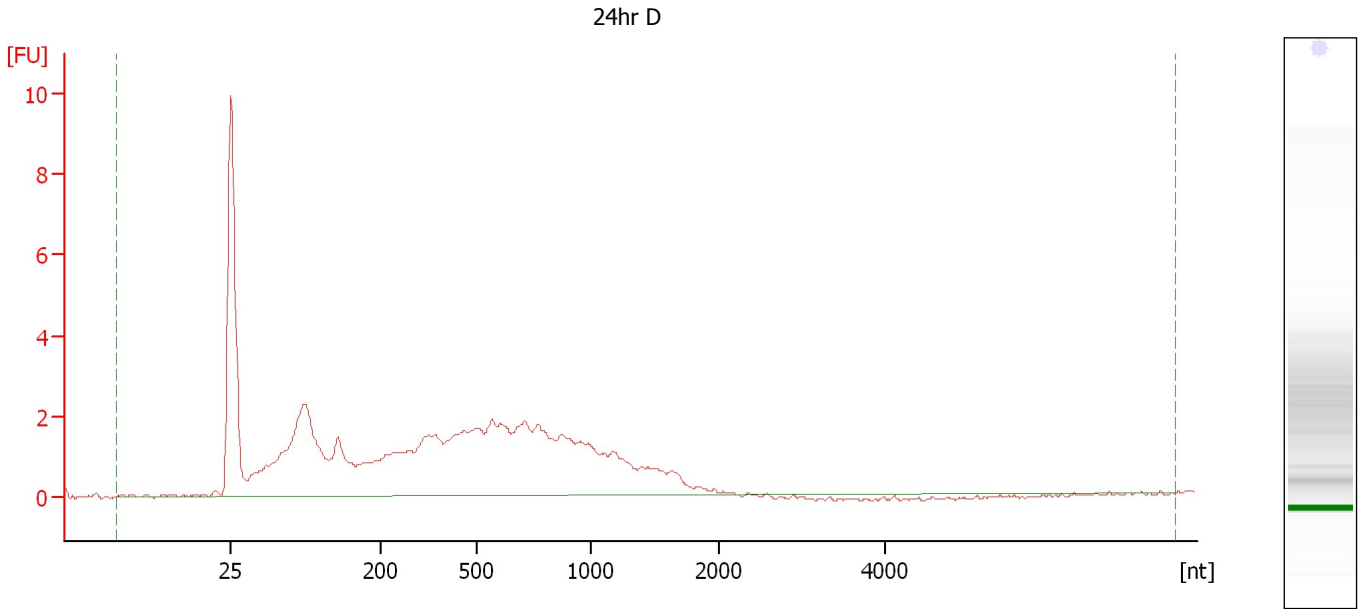
Overall Results for sample 3 : 24hr C

RNA Area:	44.5	RNA Integrity Number (RIN):	1.7 (B.02.08)
RNA Concentration:	47 ng/μl	Result Flagging Color:	
rRNA Ratio [28s / 18s]:	0.0	Result Flagging Label:	RIN: 1.70

Assay Class: Eukaryote Total RNA Nano
Data Path: C:\...ents and Settings\Bioanalyzer\2012-03-27\2012-03-27_001.xad

Created: 3/27/2012 9:40:04 AM
Modified: 3/27/2012 10:03:53 AM

Electropherogram Summary Continued ...



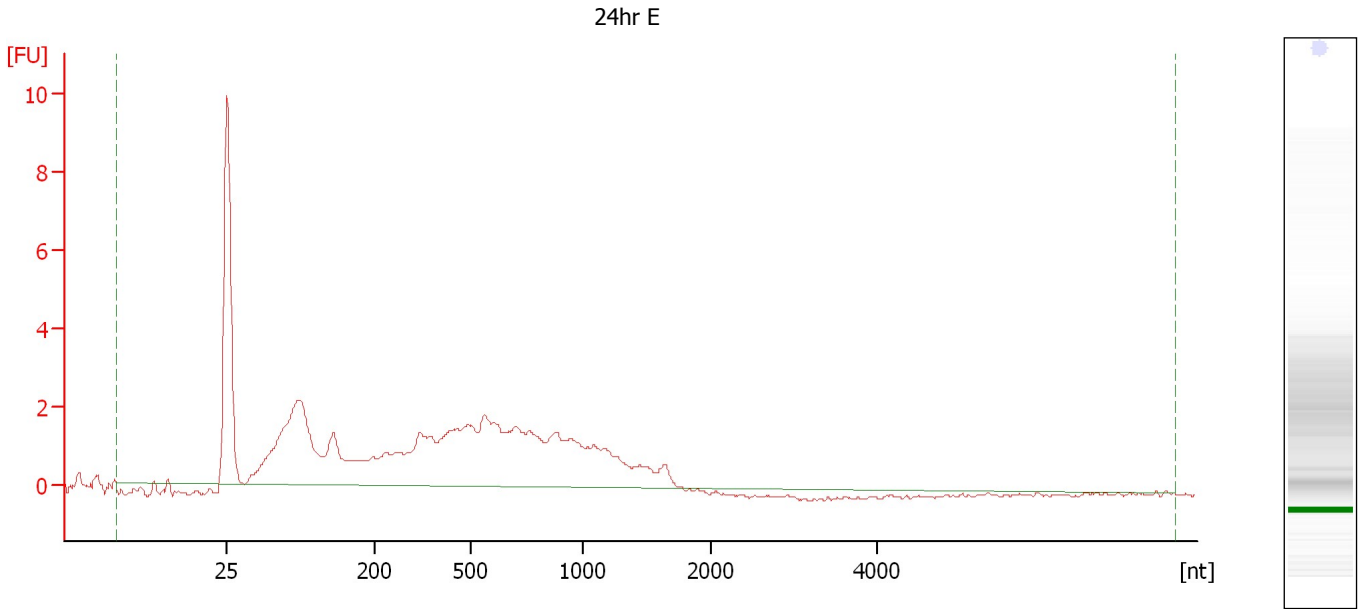
Overall Results for sample 4 : 24hr D

RNA Area:	71.0	RNA Integrity Number (RIN):	2.1 (B.02.08)
RNA Concentration:	75 ng/ μ l	Result Flagging Color:	
rRNA Ratio [28s / 18s]:	0.0	Result Flagging Label:	RIN: 2.10

Assay Class: Eukaryote Total RNA Nano
Data Path: C:\...ents and Settings\Bioanalyzer\2012-03-27\2012-03-27_001.xad

Created: 3/27/2012 9:40:04 AM
Modified: 3/27/2012 10:03:53 AM

Electropherogram Summary Continued ...



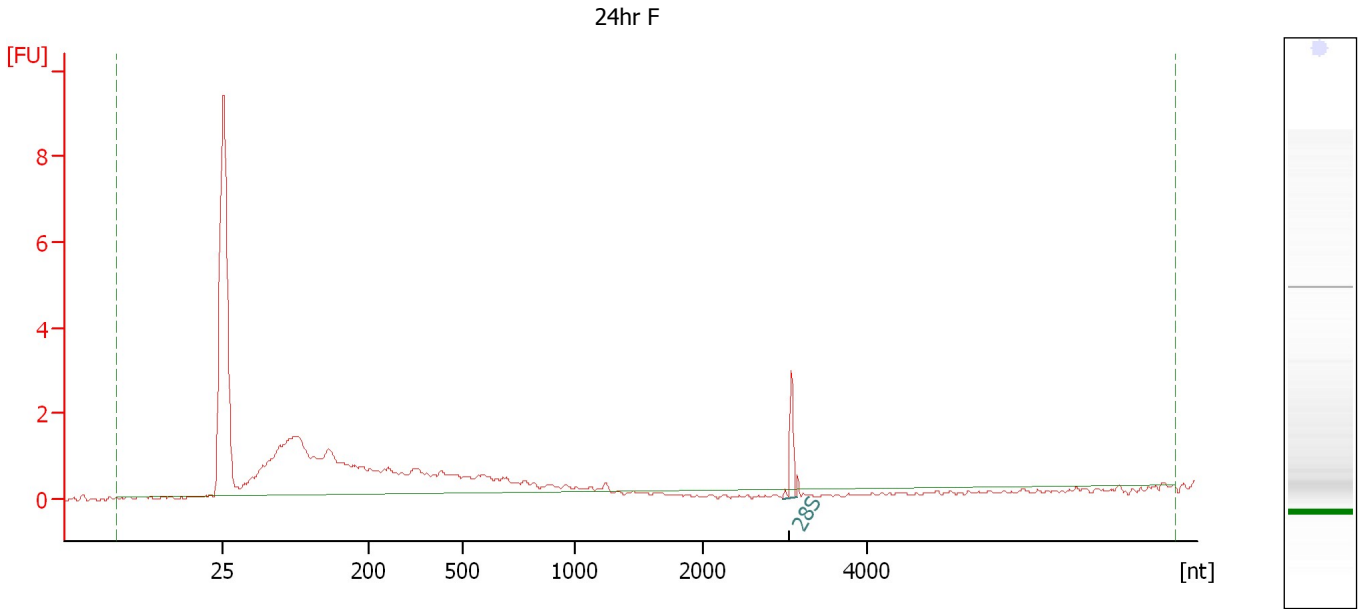
Overall Results for sample 5 : 24hr E

RNA Area:	61.4	RNA Integrity Number (RIN):	2.1 (B.02.08)
RNA Concentration:	65 ng/μl	Result Flagging Color:	
rRNA Ratio [28s / 18s]:	0.0	Result Flagging Label:	RIN: 2.10

Assay Class: Eukaryote Total RNA Nano
Data Path: C:\...ents and Settings\Bioanalyzer\2012-03-27\2012-03-27_001.xad

Created: 3/27/2012 9:40:04 AM
Modified: 3/27/2012 10:03:53 AM

Electropherogram Summary Continued ...



Overall Results for sample 6 : 24hr F

RNA Area:	29.1	RNA Integrity Number (RIN):	2.7 (B.02.08)
RNA Concentration:	31 ng/μl	Result Flagging Color:	
rRNA Ratio [28s / 18s]:	0.0	Result Flagging Label:	RIN: 2.70

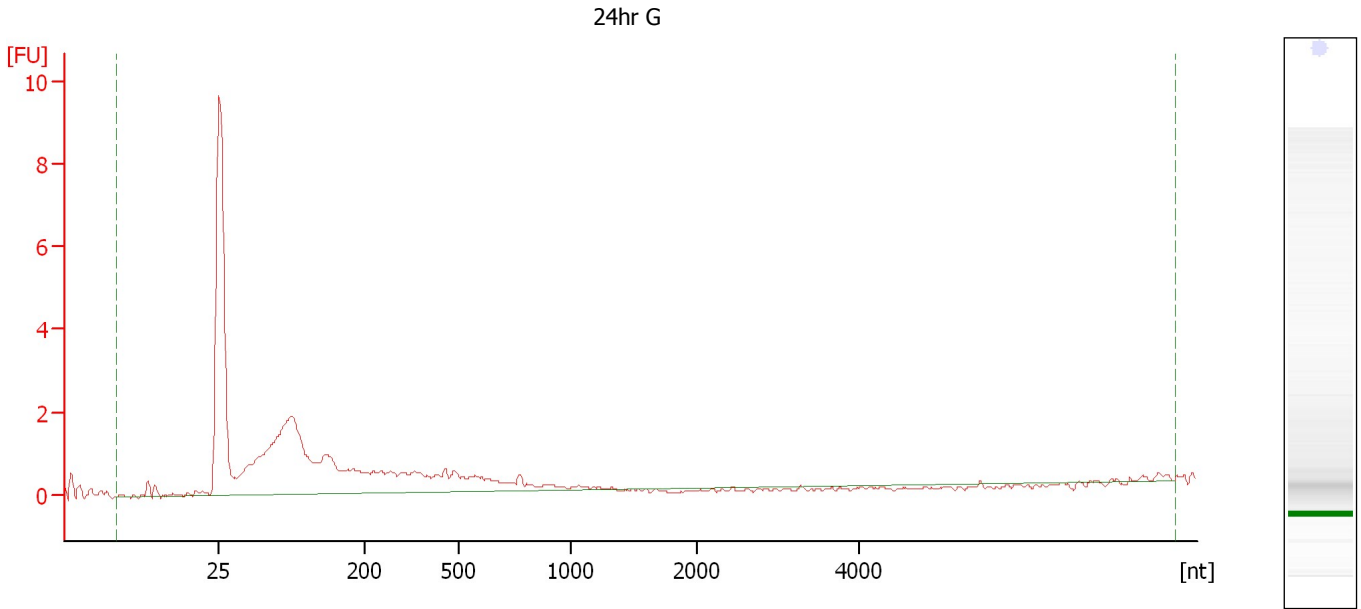
Fragment table for sample 6 : 24hr F

Name	Start Size [nt]	End Size [nt]	Area	% of total Area
28S	2,974	3,144	1.2	4.1

Assay Class: Eukaryote Total RNA Nano
Data Path: C:\...ents and Settings\Bioanalyzer\2012-03-27\2012-03-27_001.xad

Created: 3/27/2012 9:40:04 AM
Modified: 3/27/2012 10:03:53 AM

Electropherogram Summary Continued ...



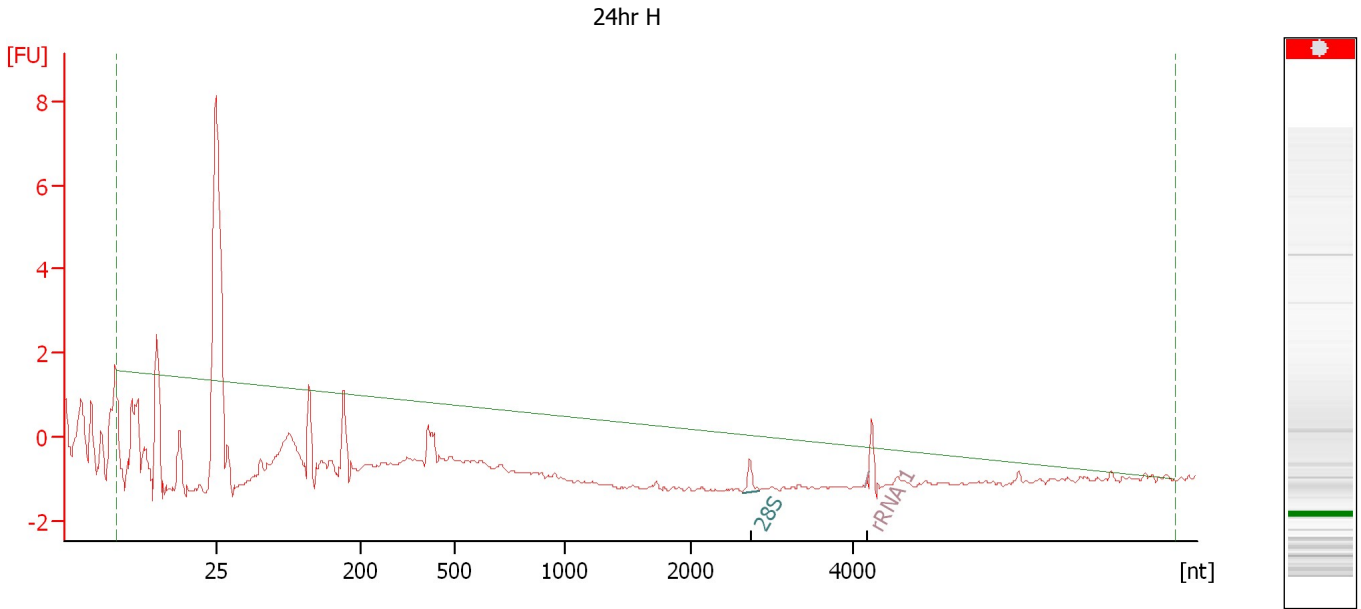
Overall Results for sample 7 : 24hr G

RNA Area:	31.4	RNA Integrity Number (RIN):	1.9 (B.02.08)
RNA Concentration:	33 ng/μl	Result Flagging Color:	
rRNA Ratio [28s / 18s]:	0.0	Result Flagging Label:	RIN: 1.90

Assay Class: Eukaryote Total RNA Nano
 Data Path: C:\...ents and Settings\Bioanalyzer\2012-03-27\2012-03-27_001.xad

Created: 3/27/2012 9:40:04 AM
 Modified: 3/27/2012 10:03:53 AM

Electropherogram Summary Continued ...



Overall Results for sample 8 : 24hr H

RNA Area:	0.7	RNA Integrity Number (RIN):	N/A (B.02.08)
RNA Concentration:	1 ng/μl	Result Flagging Color:	
rRNA Ratio [28s / 18s]:	0.0	Result Flagging Label:	RIN N/A

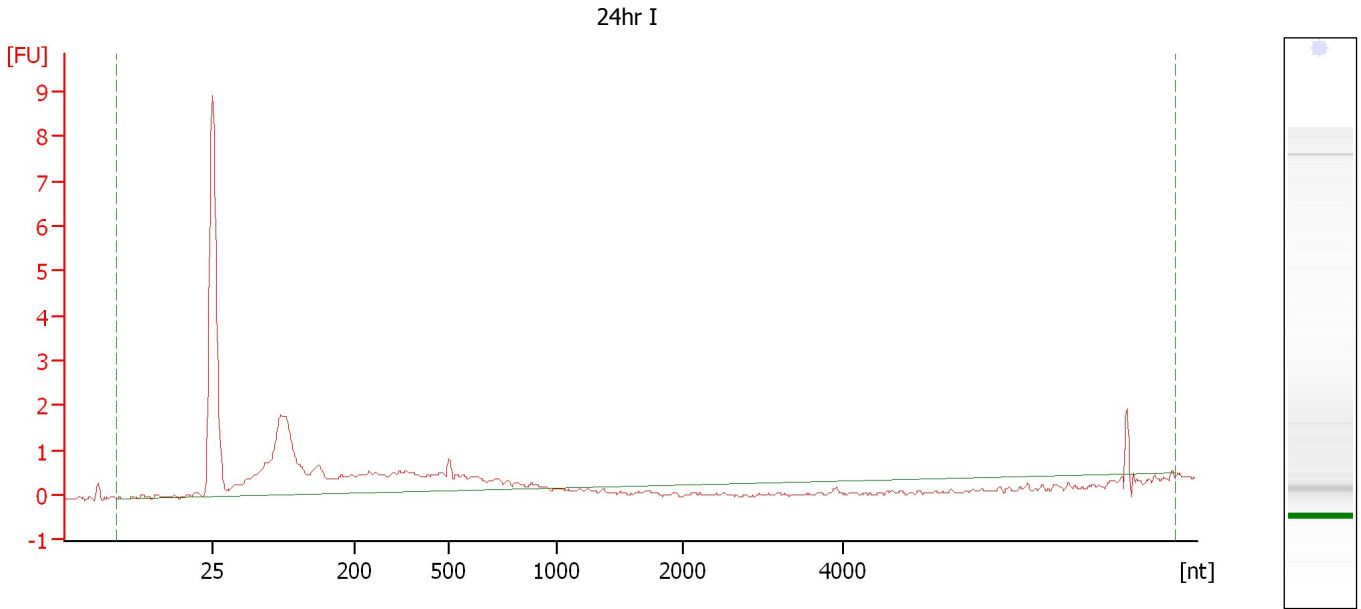
Fragment table for sample 8 : 24hr H

Name	Start Size [nt]	End Size [nt]	Area	% of total Area
28S	2,638	2,848	0.4	56.8
rRNA 1	4,146	4,200	0.0	0.0

Assay Class: Eukaryote Total RNA Nano
Data Path: C:\...ents and Settings\Bioanalyzer\2012-03-27\2012-03-27_001.xad

Created: 3/27/2012 9:40:04 AM
Modified: 3/27/2012 10:03:53 AM

Electropherogram Summary Continued ...



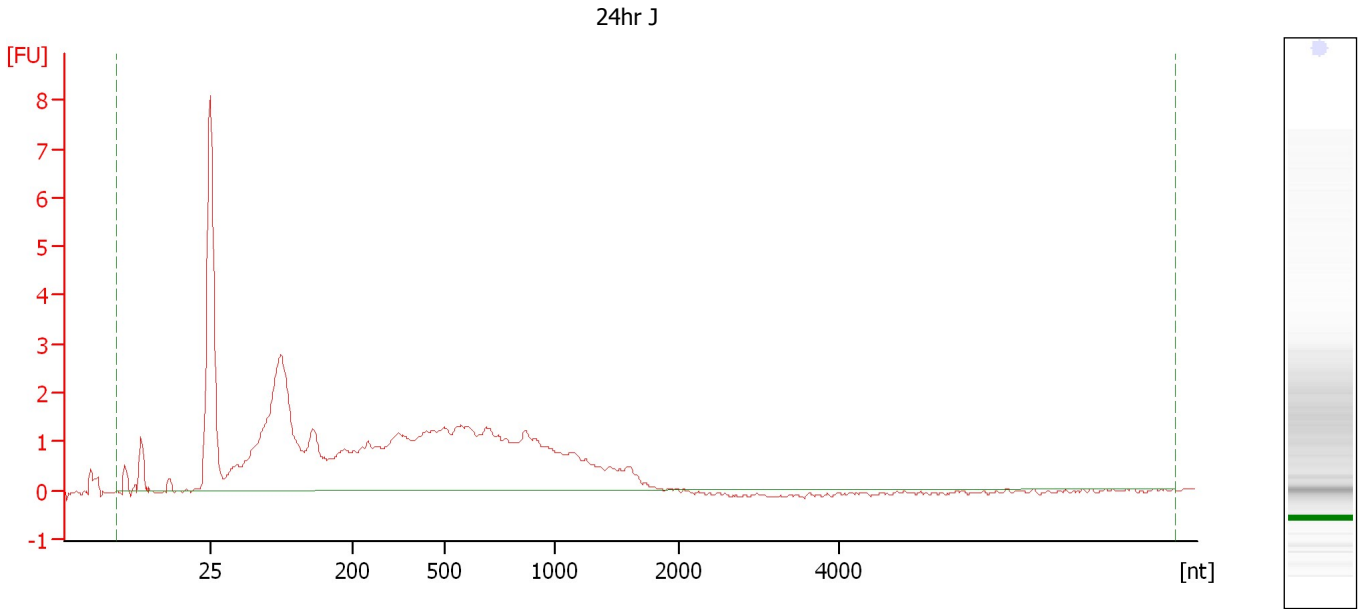
Overall Results for sample 9 : 24hr I

RNA Area:	21.8	RNA Integrity Number (RIN):	1.9 (B.02.08)
RNA Concentration:	23 ng/μl	Result Flagging Color:	
rRNA Ratio [28s / 18s]:	0.0	Result Flagging Label:	RIN: 1.90

Assay Class: Eukaryote Total RNA Nano
Data Path: C:\...ents and Settings\Bioanalyzer\2012-03-27\2012-03-27_001.xad

Created: 3/27/2012 9:40:04 AM
Modified: 3/27/2012 10:03:53 AM

Electropherogram Summary Continued ...



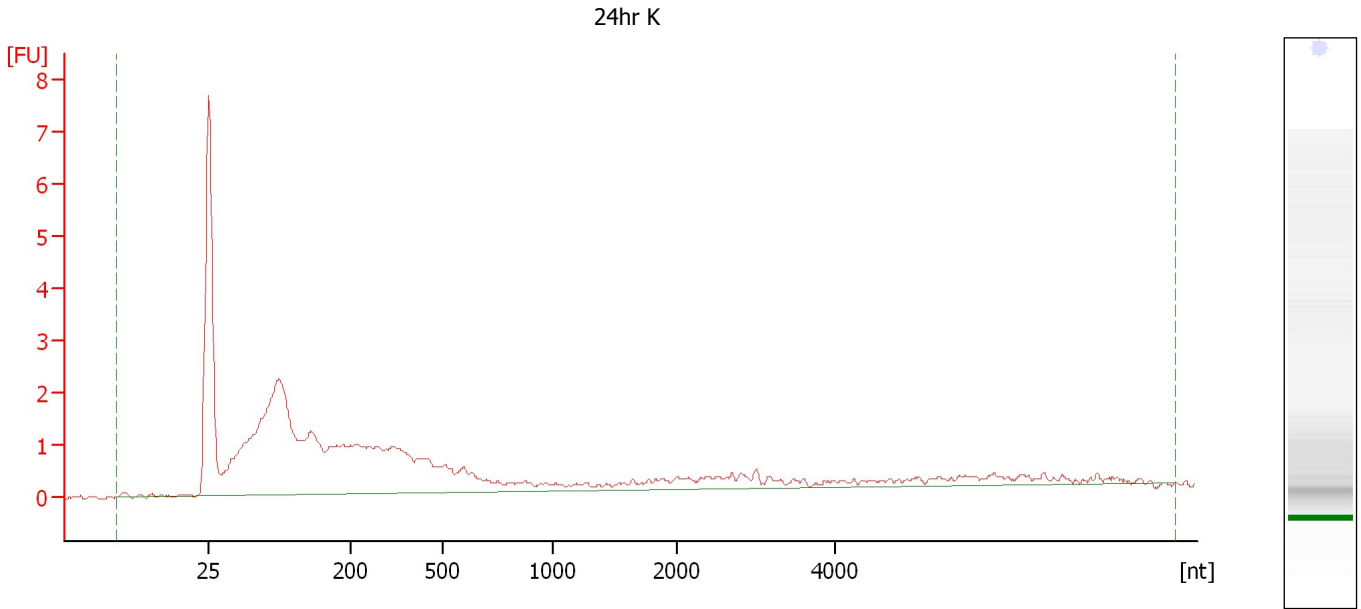
Overall Results for sample 10 : 24hr J

RNA Area:	61.0	RNA Integrity Number (RIN):	2.3 (B.02.08)
RNA Concentration:	65 ng/μl	Result Flagging Color:	
rRNA Ratio [28s / 18s]:	0.0	Result Flagging Label:	RIN: 2.30

Assay Class: Eukaryote Total RNA Nano
Data Path: C:\...ents and Settings\Bioanalyzer\2012-03-27\2012-03-27_001.xad

Created: 3/27/2012 9:40:04 AM
Modified: 3/27/2012 10:03:53 AM

Electropherogram Summary Continued ...



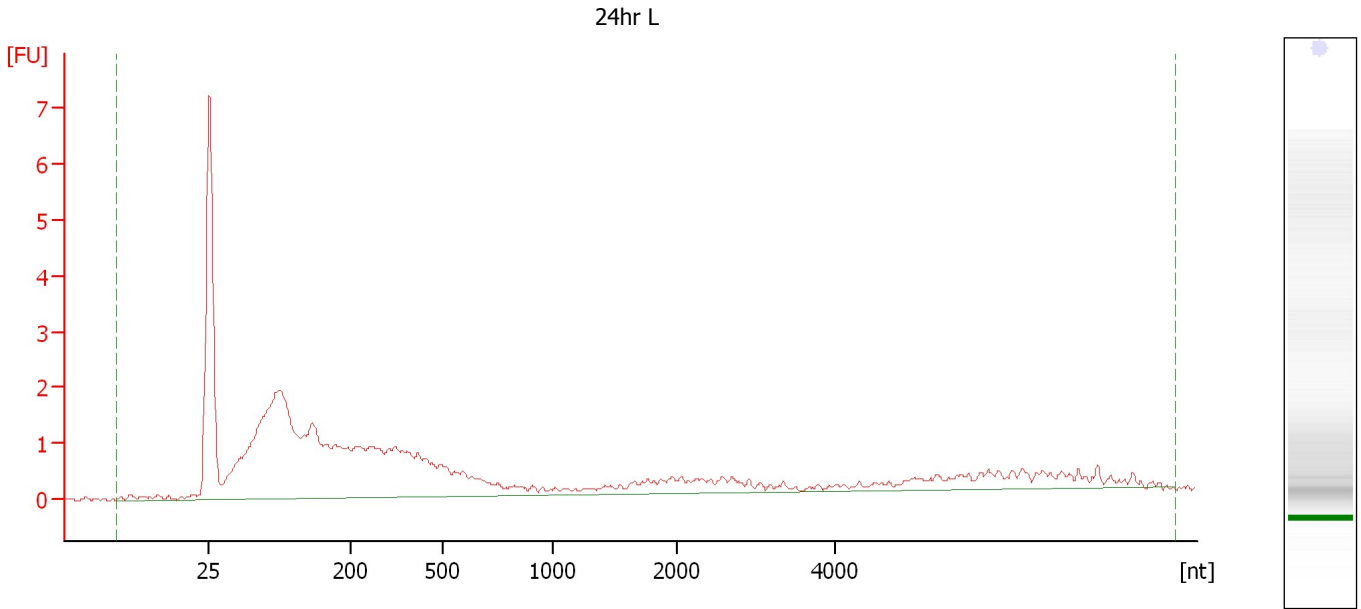
Overall Results for sample 11 : 24hr K

RNA Area:	47.8	RNA Integrity Number (RIN):	2.3 (B.02.08)
RNA Concentration:	51 ng/μl	Result Flagging Color:	
rRNA Ratio [28s / 18s]:	0.0	Result Flagging Label:	RIN: 2.30

Assay Class: Eukaryote Total RNA Nano
Data Path: C:\...ents and Settings\Bioanalyzer\2012-03-27\2012-03-27_001.xad

Created: 3/27/2012 9:40:04 AM
Modified: 3/27/2012 10:03:53 AM

Electropherogram Summary Continued ...



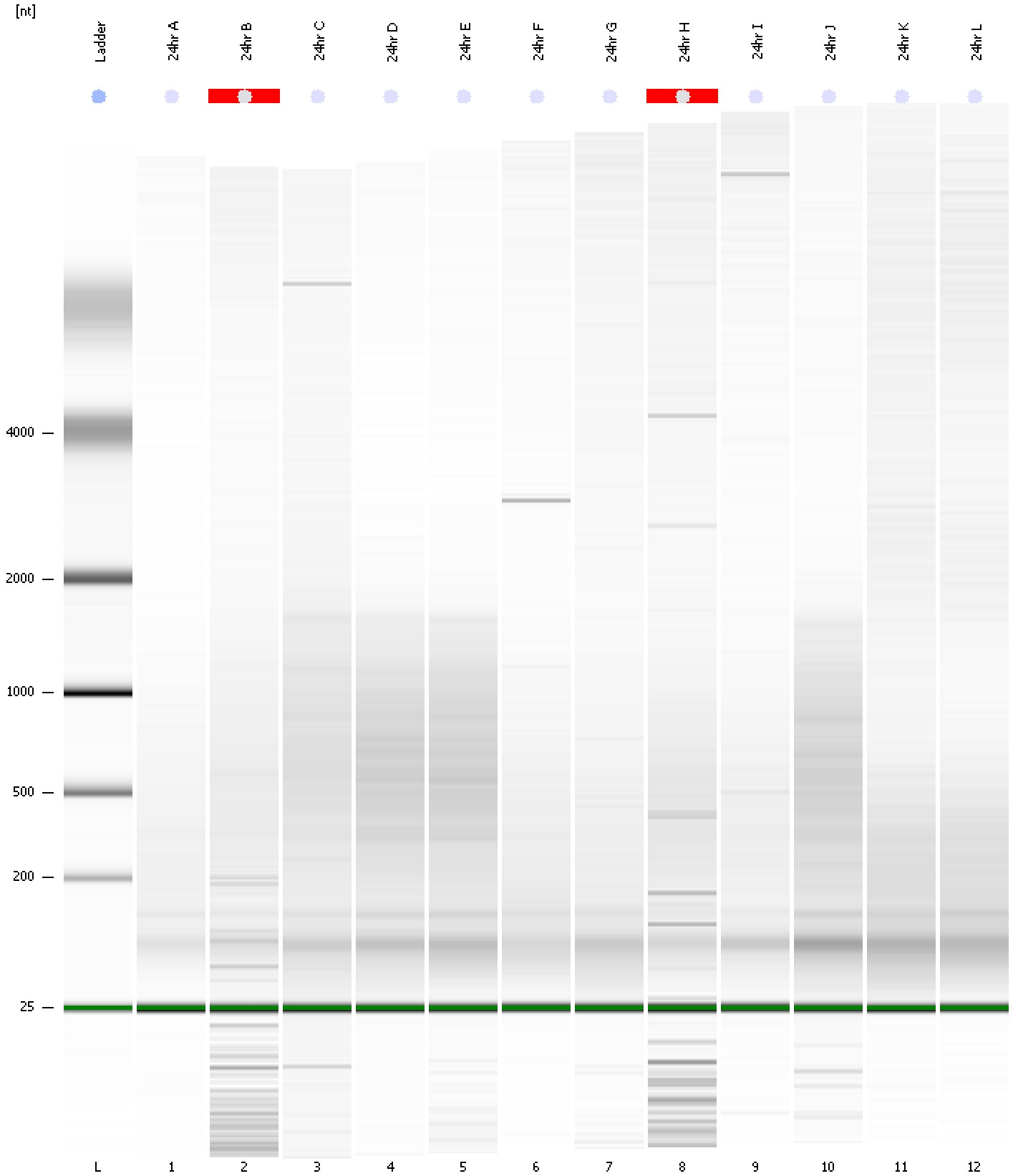
Overall Results for sample 12 : 24hr L

RNA Area:	47.7	RNA Integrity Number (RIN):	2.2 (B.02.08)
RNA Concentration:	51 ng/μl	Result Flagging Color:	
rRNA Ratio [28s / 18s]:	0.0	Result Flagging Label:	RIN: 2.20

Assay Class: Eukaryote Total RNA Nano
Data Path: C:\...ents and Settings\Bioanalyzer\2012-03-27\2012-03-27_001.xad

Created: 3/27/2012 9:40:04 AM
Modified: 3/27/2012 10:03:53 AM

Gel Image



Assay Class: Eukaryote Total RNA Nano
 Data Path: C:\...ents and Settings\Bioanalyzer\2012-03-27\2012-03-27_001.xad

Created: 3/27/2012 9:40:04 AM
 Modified: 3/27/2012 10:03:53 AM

Run Logbook

Description	Number	Source	Category	Sub Category	Time	Time Zone	User	Host
Run ended on port 1 (Number of wells acquired: 13)		Instrument	Run		3/27/2012 10:03:51 AM	(GMT --07:00) Pacific Standard Time	UC Davis	D8XSMGH1
Run started on port 1 (File: C:\Documents and Settings\Bioanalyzer\2012-03-27\2012-03-27_001.xad)		Instrument	Run		3/27/2012 9:40:10 AM	(GMT --07:00) Pacific Standard Time	UC Davis	D8XSMGH1
Product Number : G2938B		Instrument	Run		3/27/2012 9:40:10 AM	(GMT --07:00) Pacific Standard Time	UC Davis	D8XSMGH1
Name :		Instrument	Run		3/27/2012 9:40:10 AM	(GMT --07:00) Pacific Standard Time	UC Davis	D8XSMGH1
Vendor : Agilent Technologies		Instrument	Run		3/27/2012 9:40:10 AM	(GMT --07:00) Pacific Standard Time	UC Davis	D8XSMGH1
Serial# : DE13701086		Instrument	Run		3/27/2012 9:40:10 AM	(GMT --07:00) Pacific Standard Time	UC Davis	D8XSMGH1
Firmware : C.01.069		Instrument	Run		3/27/2012 9:40:10 AM	(GMT --07:00) Pacific Standard Time	UC Davis	D8XSMGH1
Cartridge : Electrode		Instrument	Run		3/27/2012 9:40:10 AM	(GMT --07:00) Pacific Standard Time	UC Davis	D8XSMGH1