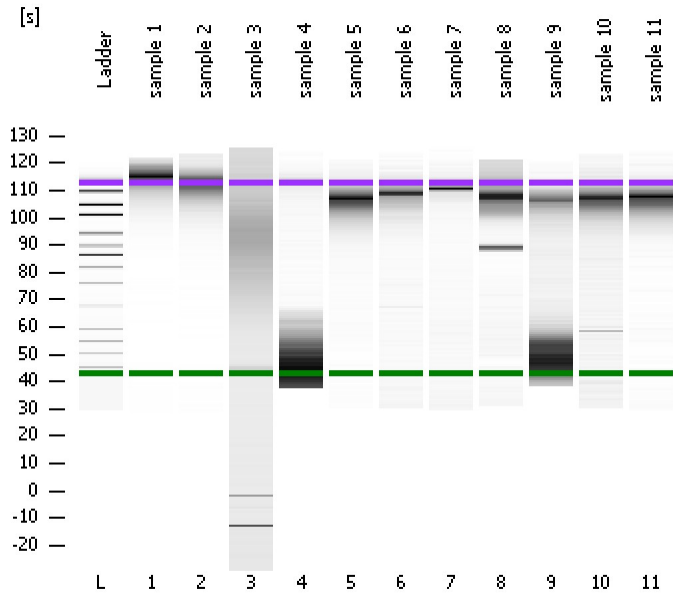


Assay Class: High Sensitivity DNA Assay  
Data Path: C:\...ents and Settings\Bioanalyzer\2012-03-27\2012-03-27\_002.xad

Created: 3/27/2012 11:23:55 AM  
Modified: 3/27/2012 12:05:16 PM

### Electrophoresis File Run Summary



#### Instrument Information:

Instrument Name: DE13701086      Firmware: C.01.069  
Serial#: DE13701086      Type: G2938B

#### Assay Information:

Assay Origin Path: C:\Program Files\Agilent\2100 bioanalyzer\2100 expert\assays\dsDNA\High Sensitivity DNA.xsy  
Assay Class: High Sensitivity DNA Assay  
Version: 1.03  
Assay Comments: Copyright © 2003-2010 Agilent Technologies

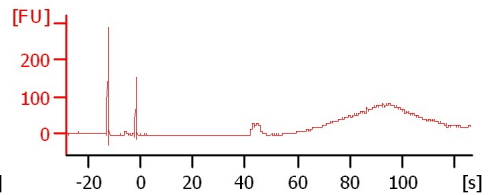
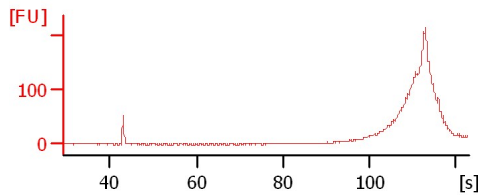
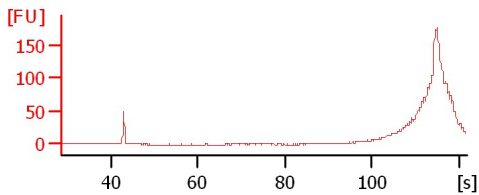
#### Chip Information:

Chip Lot #:      Reagent Kit Lot #:      Chip Comments:

sample 1

sample 2

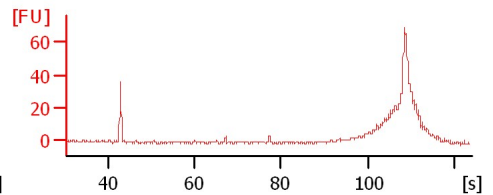
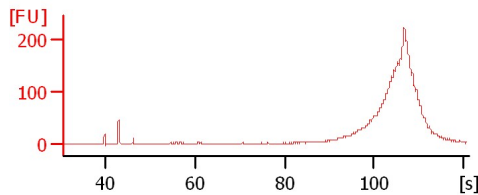
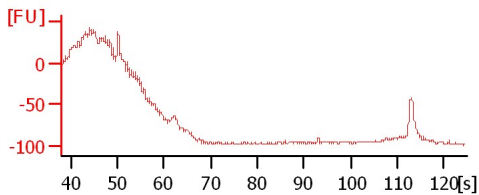
sample 3



sample 4

sample 5

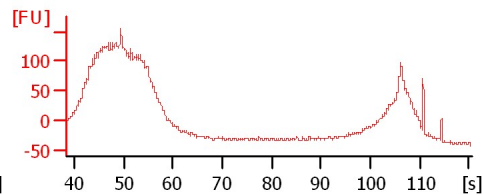
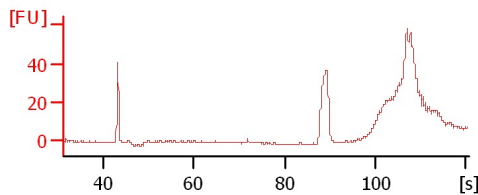
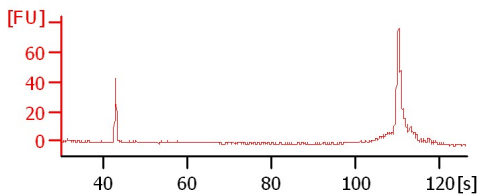
sample 6



sample 7

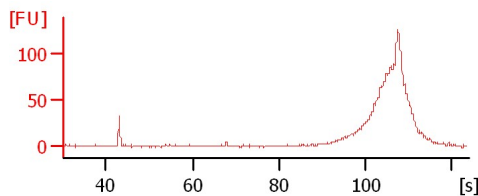
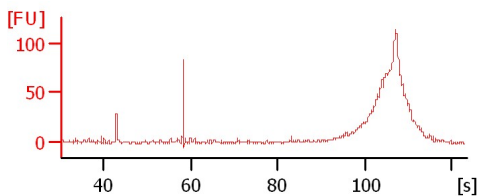
sample 8

sample 9



sample 10

sample 11



Assay Class: High Sensitivity DNA Assay  
Data Path: C:\...ents and Settings\Bioanalyzer\2012-03-27\2012-03-27\_002.xad

Created: 3/27/2012 11:23:55 AM  
Modified: 3/27/2012 12:05:16 PM

**Electrophoresis File Run Summary (Chip Summary)**

Sample Name	Sample Comment	Rest. Digest	Status	Observation	Result Label	Result Color
sample 1		<input type="checkbox"/>	✓			
sample 2		<input type="checkbox"/>	✓			
sample 3		<input type="checkbox"/>	✓			
sample 4		<input type="checkbox"/>	✓			
sample 5		<input type="checkbox"/>	✓			
sample 6		<input type="checkbox"/>	✓			
sample 7		<input type="checkbox"/>	✓			
sample 8		<input type="checkbox"/>	✓			
sample 9		<input type="checkbox"/>	✓			
sample 10		<input type="checkbox"/>	✓			
sample 11		<input type="checkbox"/>	✓			
Ladder		<input type="checkbox"/>	✓			

**Chip Lot #**

**Reagent Kit Lot #**

**Chip Comments :**

Assay Class: High Sensitivity DNA Assay  
Data Path: C:\...ents and Settings\Bioanalyzer\2012-03-27\2012-03-27\_002.xad

Created: 3/27/2012 11:23:55 AM  
Modified: 3/27/2012 12:05:16 PM

**Electrophoresis Assay Details**

**General Analysis Settings**

Number of Available Sample and Ladder Wells (Max.) : 12  
Minimum Visible Range [s] : 32  
Maximum Visible Range [s] : 138  
Start Analysis Time Range [s] : 33  
End Analysis Time Range [s] : 137.5  
Ladder Concentration [pg/μl] : 1950  
Uses Standard Area for Ladder Fragments  
Lower Marker Concentration [pg/μl] : 125  
Upper Marker Concentration [pg/μl] : 75  
Used Upper Marker for Quantitation  
Standard Curve Fit is Point to Point  
Show Data Aligned to Lower and Upper Marker

**Integrator Settings**

Integration Start Time [s] : 33.05  
Integration End Time [s] : 137  
Slope Threshold : 0.8  
Height Threshold [FU] : 5  
Area Threshold : 0.1  
Width Threshold [s] : 0.6  
Baseline Plateau [s] : 0.5

**Filter Settings**

Filter Width [s] : 0.5  
Polynomial Order : 4

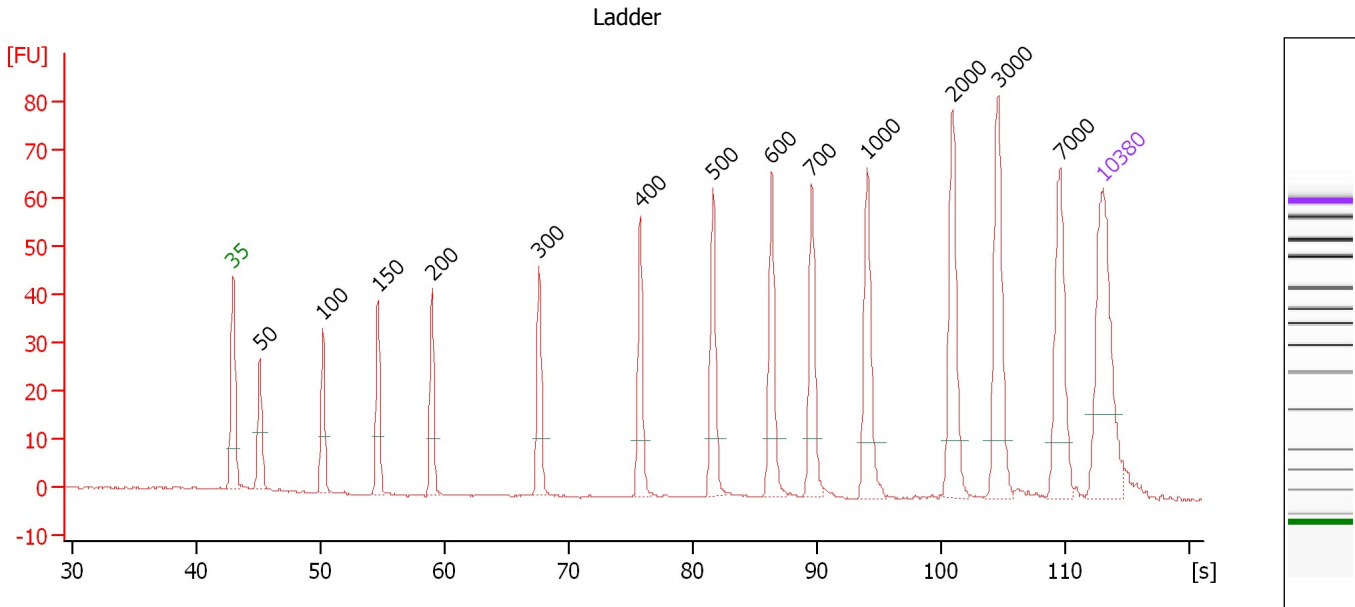
**Ladder**

Ladder Peak	Size	Area
1	35	160
2	50	210
3	100	208
4	150	221
5	200	242
6	300	270
7	400	305
8	500	306
9	600	336
10	700	321
11	1000	366
12	2000	413
13	3000	411
14	7000	400
15	10380	214

Assay Class: High Sensitivity DNA Assay  
 Data Path: C:\...ents and Settings\Bioanalyzer\2012-03-27\2012-03-27\_002.xad

Created: 3/27/2012 11:23:55 AM  
 Modified: 3/27/2012 12:05:16 PM

**Electropherogram Summary**



**Overall Results for Ladder**

Noise: 0.2

**Peak table for Ladder**

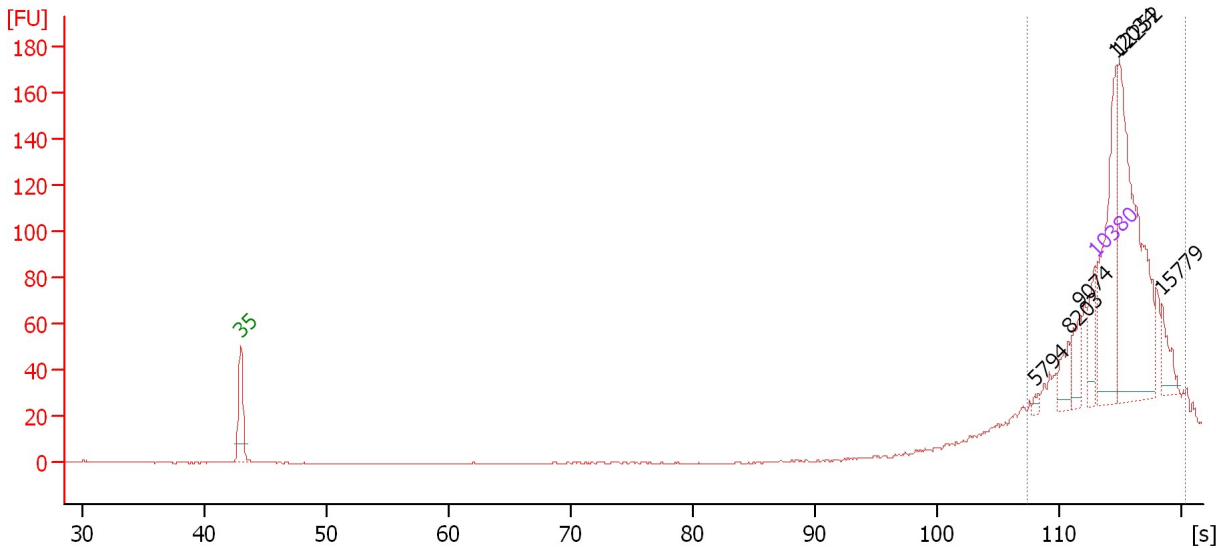
Peak	Size [bp]	Conc. [pg/μl]	Molarity [pmol/l]	Observations
1	35	125.00	5,411.3	Lower Marker
2	50	150.00	4,545.5	Ladder Peak
3	100	150.00	2,272.7	Ladder Peak
4	150	150.00	1,515.2	Ladder Peak
5	200	150.00	1,136.4	Ladder Peak
6	300	150.00	757.6	Ladder Peak
7	400	150.00	568.2	Ladder Peak
8	500	150.00	454.5	Ladder Peak
9	600	150.00	378.8	Ladder Peak
10	700	150.00	324.7	Ladder Peak
11	1,000	150.00	227.3	Ladder Peak
12	2,000	150.00	113.6	Ladder Peak
13	3,000	150.00	75.8	Ladder Peak
14	7,000	150.00	32.5	Ladder Peak
15	10,380	75.00	10.9	Upper Marker

Assay Class: High Sensitivity DNA Assay  
 Data Path: C:\...ents and Settings\Bioanalyzer\2012-03-27\2012-03-27\_002.xad

Created: 3/27/2012 11:23:55 AM  
 Modified: 3/27/2012 12:05:16 PM

**Electropherogram Summary Continued ...**

sample 1



**Overall Results for sample 1 : sample 1**

Number of peaks found: 6                      Corr. Area 1: 568.4  
 Noise: 0.2

**Peak table for sample 1 : sample 1**

Peak	Size [bp]	Conc. [pg/μl]	Molarity [pmol/l]	Observations
1	35	125.00	5,411.3	Lower Marker
2	5,794	11.62	3.0	
3	8,203	61.12	11.3	
4	9,074	62.54	10.4	
5	10,380	75.00	10.9	Upper Marker
6	12,034	0.00	0.0	
7	12,252	0.00	0.0	
8	15,779	0.00	0.0	

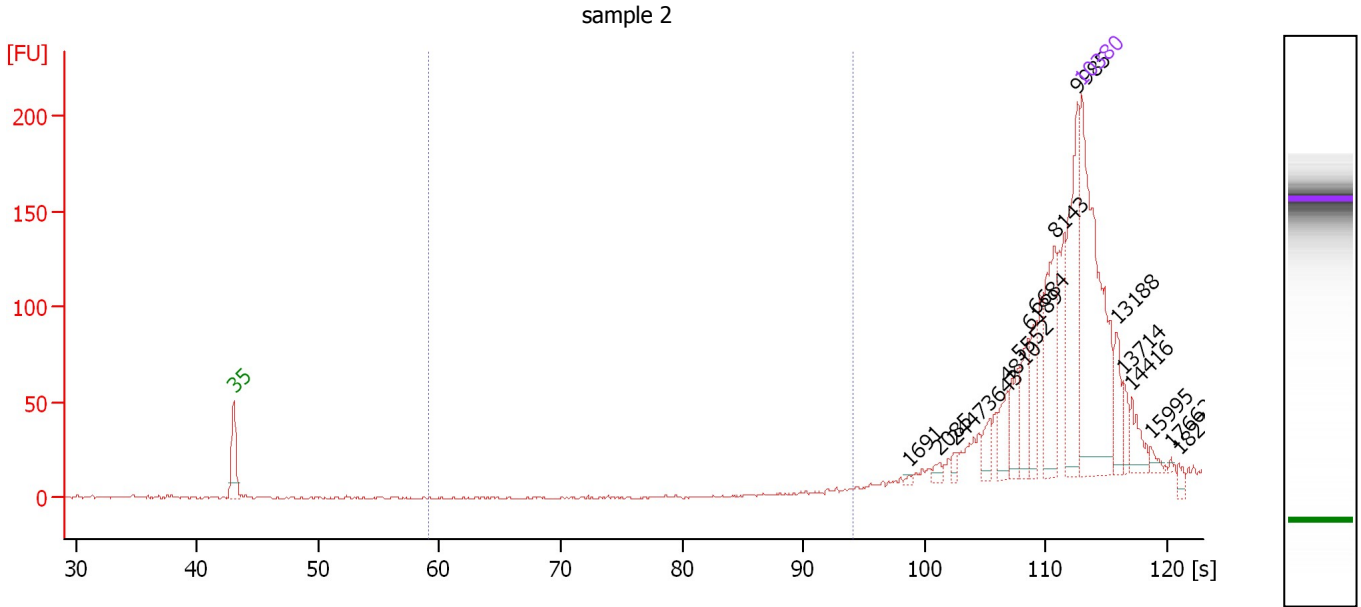
**Region table for sample 1 : sample 1**

From [s]	Molarity [pmol/l]	Average Size [bp]	Conc. [pg/μl]	To [s]	Corr. Area	% of Total	Size distribution in CV [%]	Color
107.35	162.3	12,080	1,253.21	120.40	568.4	99	20.3	Blue

Assay Class: High Sensitivity DNA Assay  
 Data Path: C:\...ents and Settings\Bioanalyzer\2012-03-27\2012-03-27\_002.xad

Created: 3/27/2012 11:23:55 AM  
 Modified: 3/27/2012 12:05:16 PM

**Electropherogram Summary Continued ...**



**Overall Results for sample 2 : sample 2**

Number of peaks found: 16                      Corr. Area 1: 0.0  
 Noise: 0.6

**Peak table for sample 2 : sample 2**

Peak	Size [bp]	Conc. [pg/μl]	Molarity [pmol/l]	Observations
1	35	125.00	5,411.3	Lower Marker
2	1,691	0.76	0.7	
3	2,085	2.30	1.7	
4	2,447	2.17	1.3	
5	3,643	5.65	2.3	
6	4,810	9.27	2.9	
7	5,552	11.97	3.3	
8	6,189	12.99	3.2	
9	6,684	11.76	2.7	
10	8,143	28.55	5.3	
11	9,985	40.80	6.2	
12	10,380	75.00	10.9	Upper Marker
13	13,188	0.00	0.0	
14	13,714	0.00	0.0	
15	14,416	0.00	0.0	
16	15,995	0.00	0.0	
17	17,662	0.00	0.0	
18	18,276	0.00	0.0	

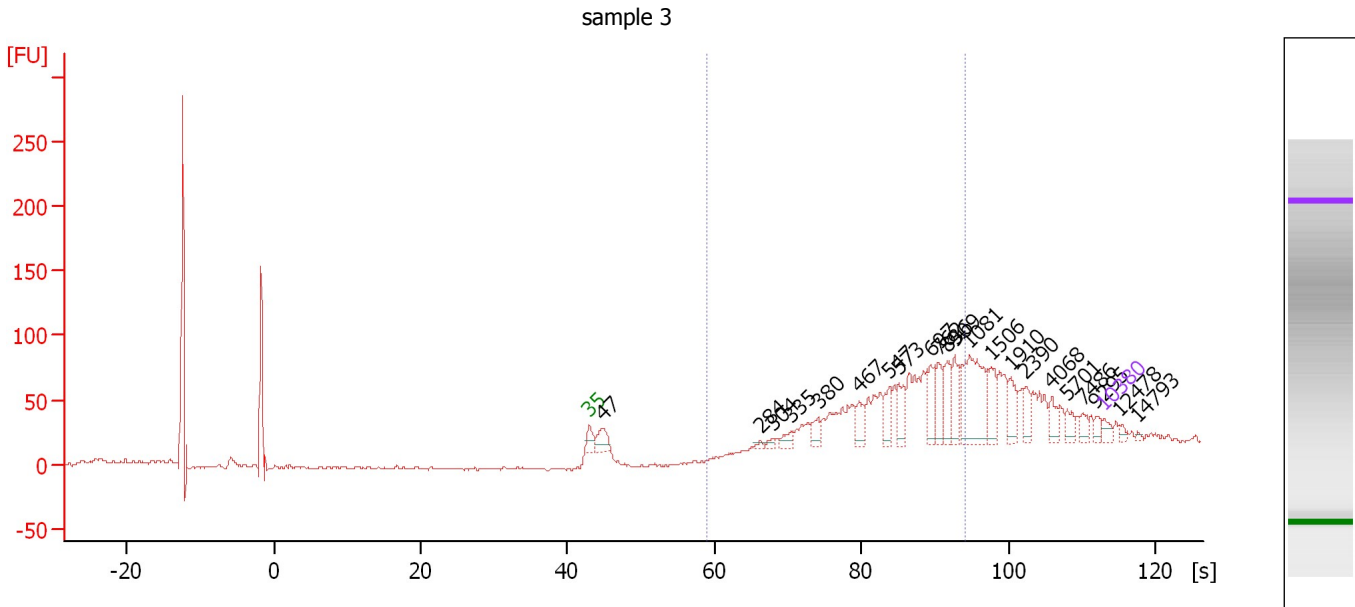
**Region table for sample 2 : sample 2**

From [s]	Molarity [pmol/l]	Average Size [bp]	Conc. [pg/μl]	To [s]	Corr. Area	% of Total	Size distribution in CV [%]	Color
59.03	0.0	0	0.00	94.03	0.0	0	0.0	Blue

Assay Class: High Sensitivity DNA Assay  
 Data Path: C:\...ents and Settings\Bioanalyzer\2012-03-27\2012-03-27\_002.xad

Created: 3/27/2012 11:23:55 AM  
 Modified: 3/27/2012 12:05:16 PM

**Electropherogram Summary Continued ...**



**Overall Results for sample 3 : sample 3**

Number of peaks found: 22                      Corr. Area 1: 559.7  
 Noise: 0.9

**Peak table for sample 3 : sample 3**

Peak	Size [bp]	Conc. [pg/μl]	Molarity [pmol/l]	Observations
1	35	125.00	5,411.3	Lower Marker
2	47	317.02	10,181.7	
3	284	40.12	214.2	
4	304	71.43	356.5	
5	335	127.97	578.8	
6	380	168.04	670.0	
7	467	236.15	766.4	
8	547	266.81	739.0	
9	573	299.14	790.4	
10	697	338.45	736.1	
11	762	339.89	676.1	
12	836	374.04	678.3	
13	909	282.26	470.3	
14	1,081	946.04	1,326.1	
15	1,506	342.16	344.2	
16	1,910	246.46	195.5	
17	2,390	168.68	107.0	
18	4,068	155.56	57.9	
19	5,701	129.56	34.4	
20	7,486	93.89	19.0	
21	9,295	67.23	11.0	
22	10,380	75.00	10.9	Upper Marker
23	12,478	0.00	0.0	
24	14,793	0.00	0.0	

Assay Class: High Sensitivity DNA Assay  
Data Path: C:\...ents and Settings\Bioanalyzer\2012-03-27\2012-03-27\_002.xad

Created: 3/27/2012 11:23:55 AM  
Modified: 3/27/2012 12:05:16 PM

**Electropherogram Summary Continued ...**

... Region table for sample 3 :

sample 3

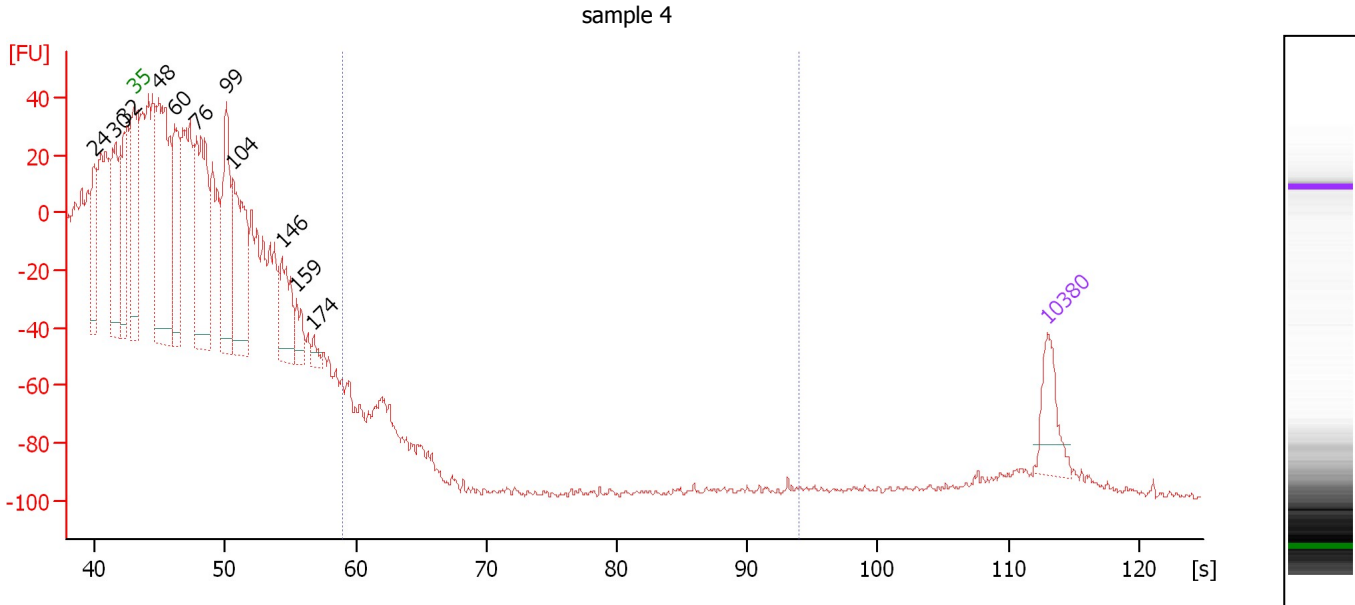
From [s]	Molarity [pmol/l]	Average Size [bp]	Conc. [pg/μl]	To [s]	Corr. Area % of Total	Size distribution in CV [%]	Color
59.03	13,305.0	614	4,806.04	94.03	559.7	45	29.4



Assay Class: High Sensitivity DNA Assay  
 Data Path: C:\...ents and Settings\Bioanalyzer\2012-03-27\2012-03-27\_002.xad

Created: 3/27/2012 11:23:55 AM  
 Modified: 3/27/2012 12:05:16 PM

**Electropherogram Summary Continued ...**



**Overall Results for sample 4 : sample 4**

Number of peaks found: 11      Corr. Area 1: 0.0  
 Noise: 1.3

**Peak table for sample 4 : sample 4**

Peak	Size [bp]	Conc. [pg/μl]	Molarity [pmol/l]	Observations
1	24	0.00	0.0	
2	30	0.00	0.0	
3	32	0.00	0.0	
4	35	125.00	5,411.3	Lower Marker
5	48	698.88	22,136.8	
6	60	334.54	8,517.4	
7	76	561.41	11,227.7	
8	99	354.49	5,452.2	
9	104	428.69	6,226.8	
10	146	182.78	1,892.8	
11	159	72.80	694.0	
12	174	24.22	210.9	
13	10,380	75.00	10.9	Upper Marker

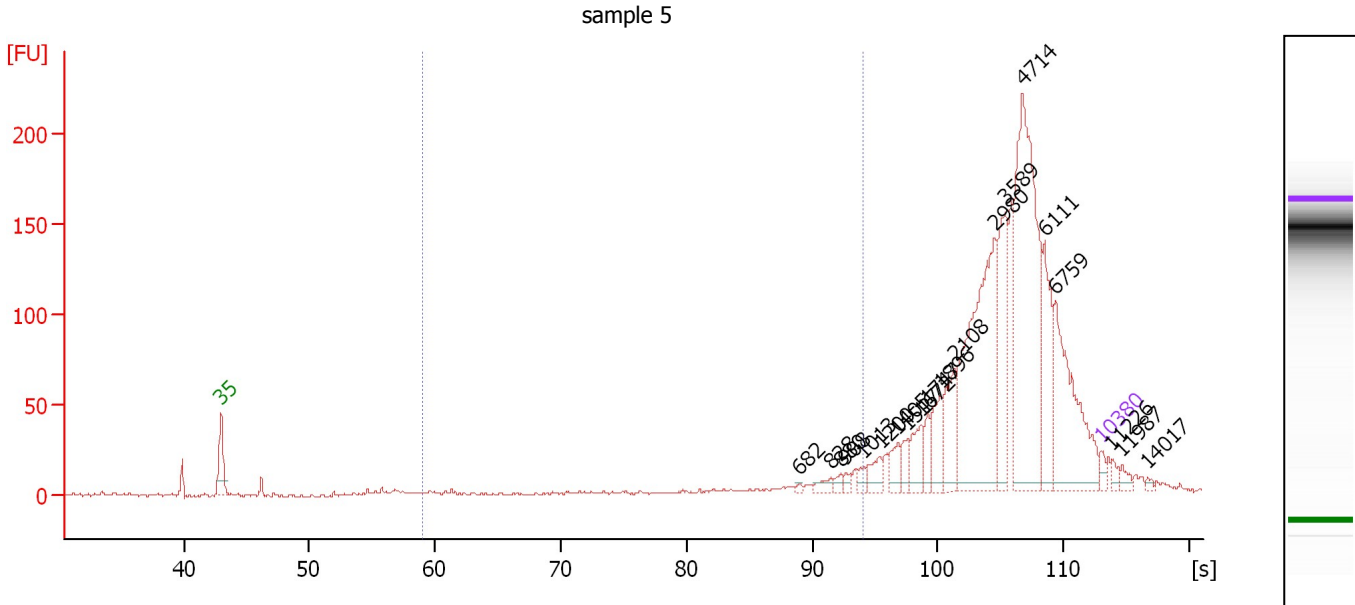
**Region table for sample 4 : sample 4**

From [s]	Molarity [pmol/l]	Average Size [bp]	Conc. [pg/μl]	To [s]	Corr. Area % of Total	Size distribution in CV [%]	Color
59.03	0.0	0	0.00	94.03	0.0	0	Blue

Assay Class: High Sensitivity DNA Assay  
 Data Path: C:\...ents and Settings\Bioanalyzer\2012-03-27\2012-03-27\_002.xad

Created: 3/27/2012 11:23:55 AM  
 Modified: 3/27/2012 12:05:16 PM

**Electropherogram Summary Continued ...**



**Overall Results for sample 5 : sample 5**

Number of peaks found: 20      Corr. Area 1: 56.2  
 Noise: 0.8

**Peak table for sample 5 : sample 5**

Peak	Size [bp]	Conc. [pg/μl]	Molarity [pmol/l]	Observations
1	35	125.00	5,411.3	Lower Marker
2	682	26.02	57.8	
3	828	94.55	173.1	
4	880	60.77	104.7	
5	908	60.45	100.8	
6	1,013	79.67	119.1	
7	1,200	186.02	234.9	
8	1,405	189.73	204.6	
9	1,517	150.52	150.3	
10	1,672	294.60	266.9	
11	1,747	169.39	146.9	
12	1,896	334.59	267.4	
13	2,108	479.70	344.8	
14	2,980	2,335.70	1,187.5	
15	3,589	877.04	370.2	
16	4,714	2,860.07	919.3	
17	6,111	738.55	183.1	
18	6,759	1,406.06	315.2	
19	10,380	75.00	10.9	Upper Marker
20	11,226	0.00	0.0	
21	11,987	0.00	0.0	
22	14,017	0.00	0.0	

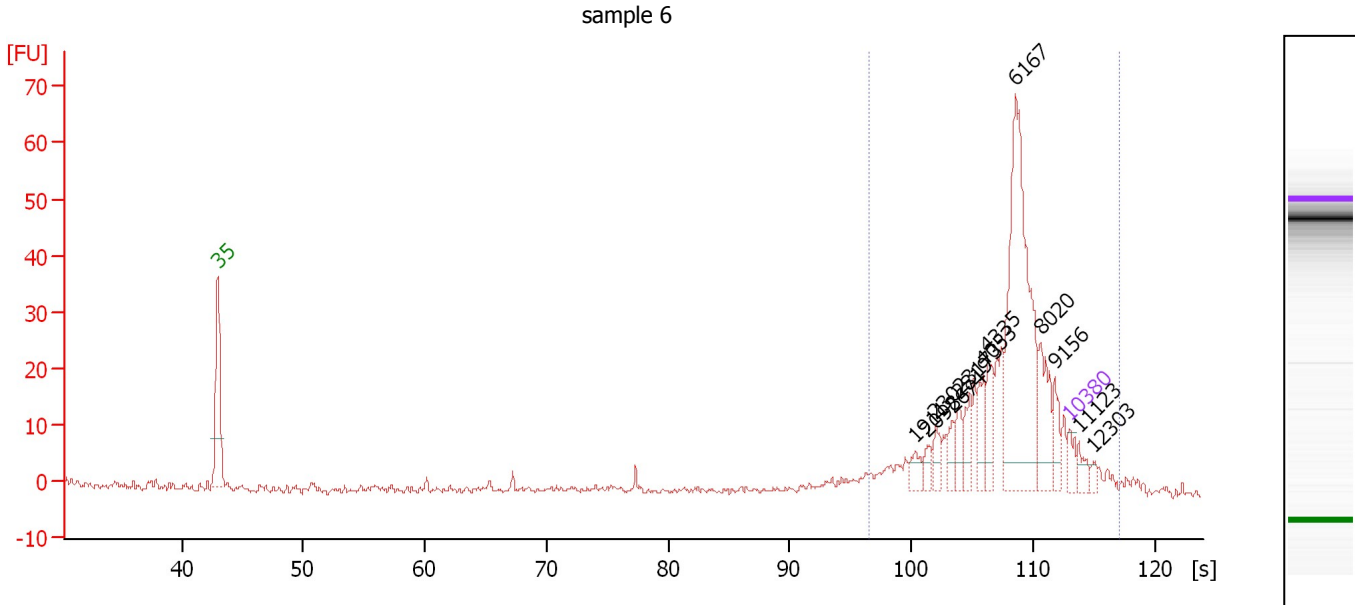
**Region table for sample 5 : sample 5**

From [s]	Molarity [pmol/l]	Average Size [bp]	Conc. [pg/μl]	To [s]	Corr. Area	% of Total	Size distribution in CV [%]	Color
59.03	1,048.2	794	483.12	94.03	56.2	4	20.9	Blue

Assay Class: High Sensitivity DNA Assay  
 Data Path: C:\...ents and Settings\Bioanalyzer\2012-03-27\2012-03-27\_002.xad

Created: 3/27/2012 11:23:55 AM  
 Modified: 3/27/2012 12:05:16 PM

**Electropherogram Summary Continued ...**



**Overall Results for sample 6 : sample 6**

Number of peaks found: 13                      Corr. Area 1: 284.2  
 Noise: 0.6

**Peak table for sample 6 : sample 6**

Peak	Size [bp]	Conc. [pg/μl]	Molarity [pmol/l]	Observations
1	35	125.00	5,411.3	Lower Marker
2	1,911	81.84	64.9	
3	2,098	56.92	41.1	
4	2,302	82.60	54.4	
5	2,674	87.13	49.4	
6	2,819	98.48	52.9	
7	3,173	116.19	55.5	
8	4,053	137.19	51.3	
9	4,335	187.38	65.5	
10	6,167	1,459.96	358.7	
11	8,020	289.94	54.8	
12	9,156	118.00	19.5	
13	10,380	75.00	10.9	Upper Marker
14	11,123	0.00	0.0	
15	12,303	0.00	0.0	

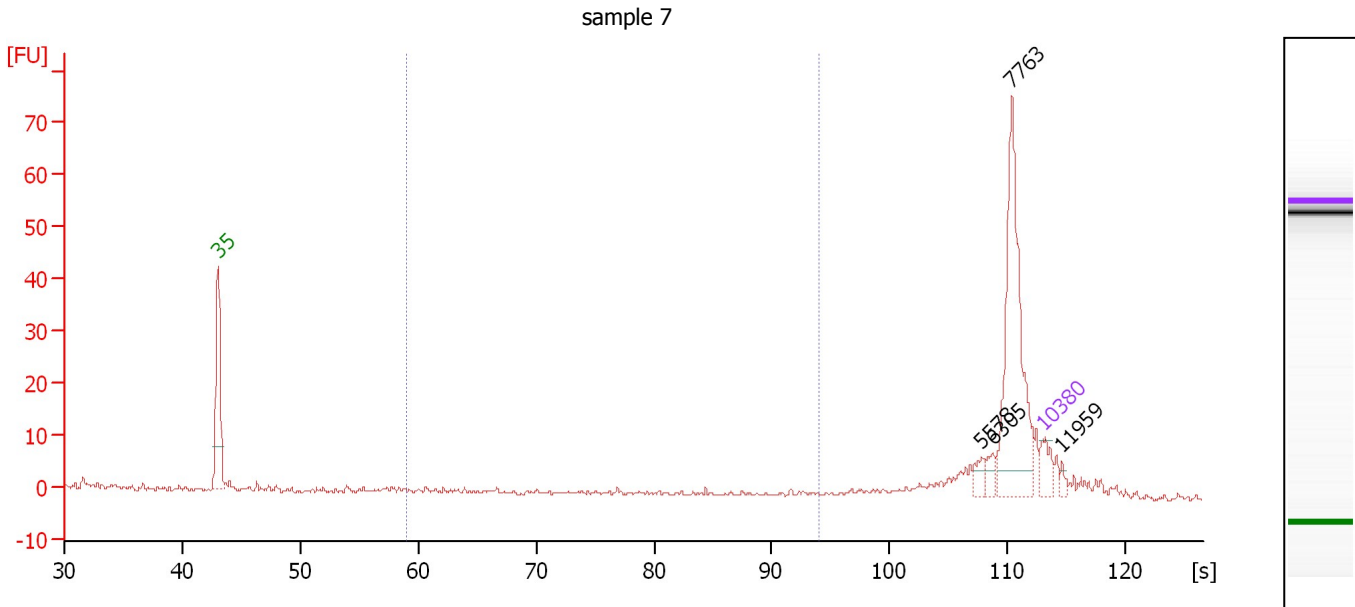
**Region table for sample 6 : sample 6**

From [s]	Molarity [pmol/l]	Average Size [bp]	Conc. [pg/μl]	To [s]	Corr. Area	% of Total	Size distribution in CV [%]	Color
96.51	1,142.7	5,934	3,439.40	117.01	284.2	94	44.2	Blue

Assay Class: High Sensitivity DNA Assay  
 Data Path: C:\...ents and Settings\Bioanalyzer\2012-03-27\2012-03-27\_002.xad

Created: 3/27/2012 11:23:55 AM  
 Modified: 3/27/2012 12:05:16 PM

**Electropherogram Summary Continued ...**



**Overall Results for sample 7 : sample 7**

Number of peaks found: 4                      Corr. Area 1: 1.4  
 Noise: 0.4

**Peak table for sample 7 : sample 7**

Peak	Size [bp]	Conc. [pg/μl]	Molarity [pmol/l]	Observations
1	35	125.00	5,411.3	Lower Marker
2	5,578	51.27	13.9	
3	6,305	47.01	11.3	
4	7,763	779.21	152.1	
5	10,380	75.00	10.9	Upper Marker
6	11,959	0.00	0.0	

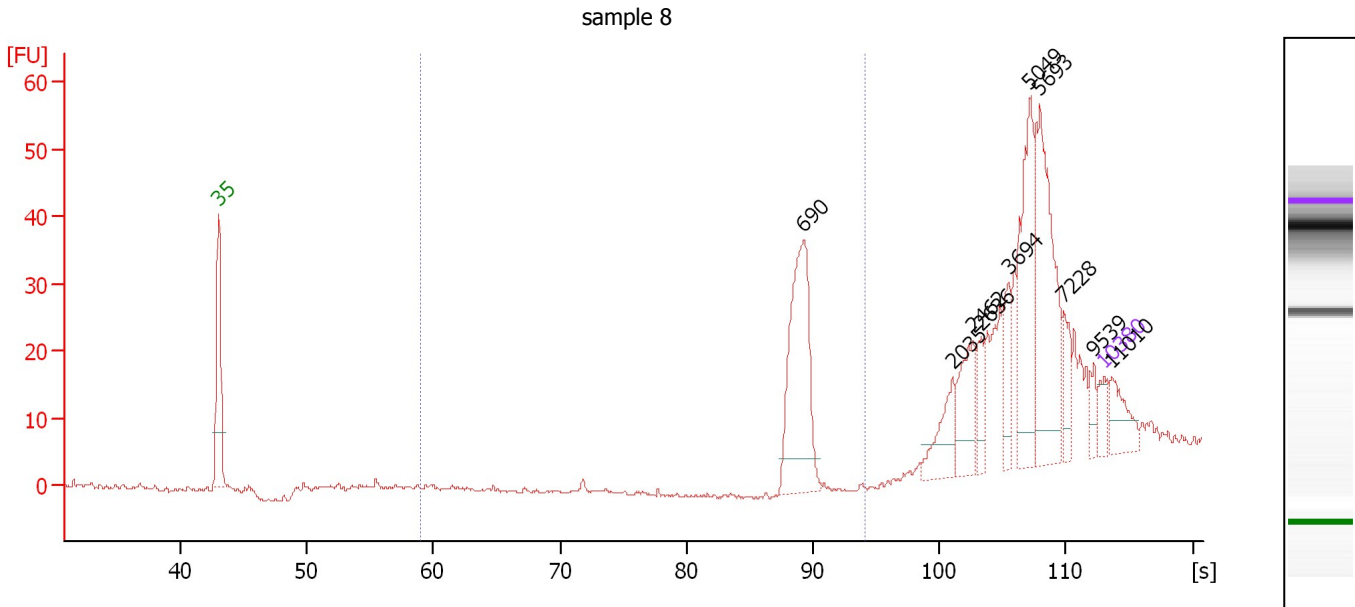
**Region table for sample 7 : sample 7**

From [s]	Molarity [pmol/l]	Average Size [bp]	Conc. [pg/μl]	To [s]	Corr. Area	% of Total	Size distribution in CV [%]	Color
59.03	67.0	523	15.78	94.03	1.4	1	48.8	Blue

Assay Class: High Sensitivity DNA Assay  
 Data Path: C:\...ents and Settings\Bioanalyzer\2012-03-27\2012-03-27\_002.xad

Created: 3/27/2012 11:23:55 AM  
 Modified: 3/27/2012 12:05:16 PM

**Electropherogram Summary Continued ...**



**Overall Results for sample 8 : sample 8**

Number of peaks found: 10                      Corr. Area 1: 59.4  
 Noise: 0.3

**Peak table for sample 8 : sample 8**

Peak	Size [bp]	Conc. [pg/μl]	Molarity [pmol/l]	Observations
1	35	125.00	5,411.3	Lower Marker
2	690	1,015.72	2,229.0	
3	2,035	224.02	166.8	
4	2,462	276.04	169.8	
5	2,636	124.18	71.4	
6	3,694	175.87	72.1	
7	5,049	631.28	189.4	
8	5,693	828.38	220.5	
9	7,228	130.46	27.3	
10	9,539	74.66	11.9	
11	10,380	75.00	10.9	Upper Marker
12	11,010	0.00	0.0	

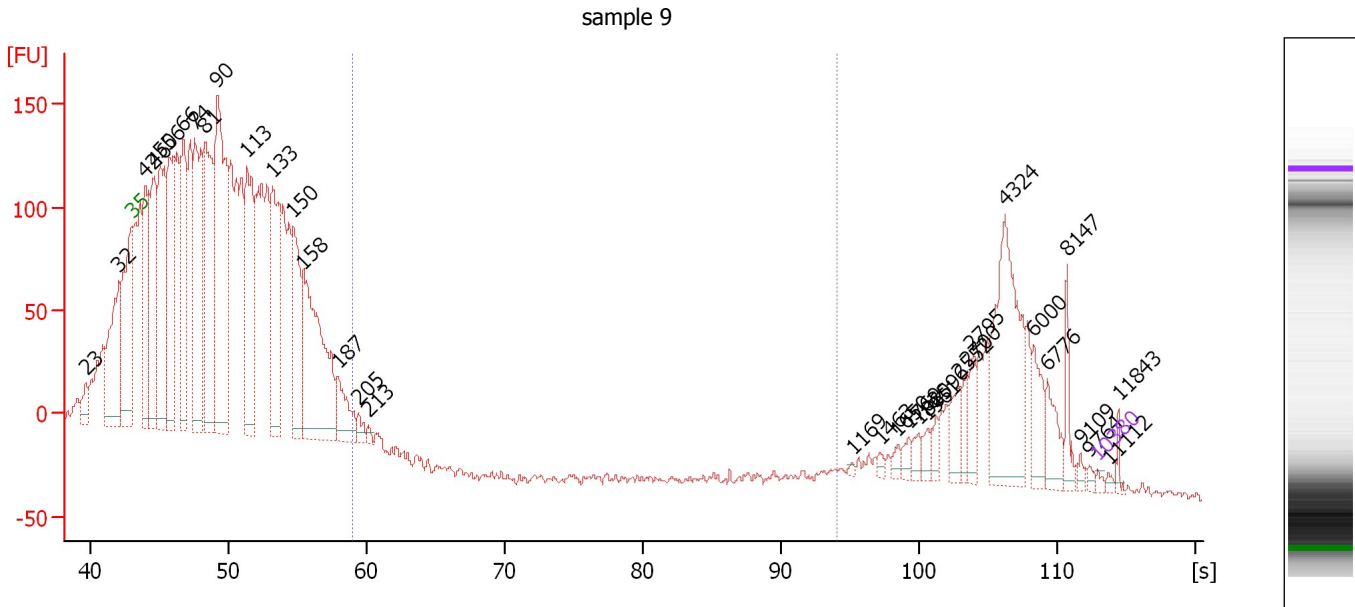
**Region table for sample 8 : sample 8**

From [s]	Molarity [pmol/l]	Average Size [bp]	Conc. [pg/μl]	To [s]	Corr. Area	% of Total	Size distribution in CV [%]	Color
59.03	1,681.7	680	754.36	94.03	59.4	18	2.6	Blue

Assay Class: High Sensitivity DNA Assay  
 Data Path: C:\...ents and Settings\Bioanalyzer\2012-03-27\2012-03-27\_002.xad

Created: 3/27/2012 11:23:55 AM  
 Modified: 3/27/2012 12:05:16 PM

**Electropherogram Summary Continued ...**



**Overall Results for sample 9 : sample 9**

Number of peaks found: 35                      Corr. Area 1: 9.0  
 Noise: 2.0

**Peak table for sample 9 : sample 9**

Peak	Size [bp]	Conc. [pg/μl]	Molarity [pmol/l]	Observations
1	23	0.00	0.0	
2	32	0.00	0.0	
3	35	125.00	5,411.3	Lower Marker
4	42	5,338.01	193,721.7	
5	46	5,678.51	185,666.9	
6	50	7,042.44	215,214.8	
7	56	5,945.57	162,151.6	
8	66	5,947.93	137,471.2	
9	74	7,601.58	155,606.4	
10	81	7,827.89	147,233.0	
11	90	11,391.05	191,404.8	
12	113	6,700.64	89,953.1	
13	133	5,629.31	63,938.4	
14	150	4,032.01	40,606.8	
15	158	8,319.05	79,766.0	
16	187	1,732.25	14,003.5	
17	205	366.56	2,710.9	
18	213	139.91	997.3	
19	1,169	52.54	68.1	
20	1,463	107.29	111.1	
21	1,650	177.08	162.6	
22	1,769	218.56	187.2	
23	1,865	237.52	193.0	
24	1,961	247.33	191.1	
25	2,096	228.49	165.1	
26	2,552	511.76	303.9	

Assay Class: High Sensitivity DNA Assay  
 Data Path: C:\...ents and Settings\Bioanalyzer\2012-03-27\2012-03-27\_002.xad


Created: 3/27/2012 11:23:55 AM  
 Modified: 3/27/2012 12:05:16 PM

**Electropherogram Summary Continued ...**

**... Peak table for sample 9 : sample 9**

Peak	Size [bp]	Conc. [pg/μl]	Molarity [pmol/l]	Observations
27	2,700	415.94	233.4	
28	2,795	550.32	298.3	
29	4,324	3,826.13	1,340.7	
30	6,000	849.22	214.4	
31	6,776	742.28	166.0	
32	8,147	584.91	108.8	
33	9,109	114.57	19.1	
34	9,764	92.71	14.4	
35	10,380	75.00	10.9	Upper Marker
36	11,112	0.00	0.0	
37	11,843	0.00	0.0	

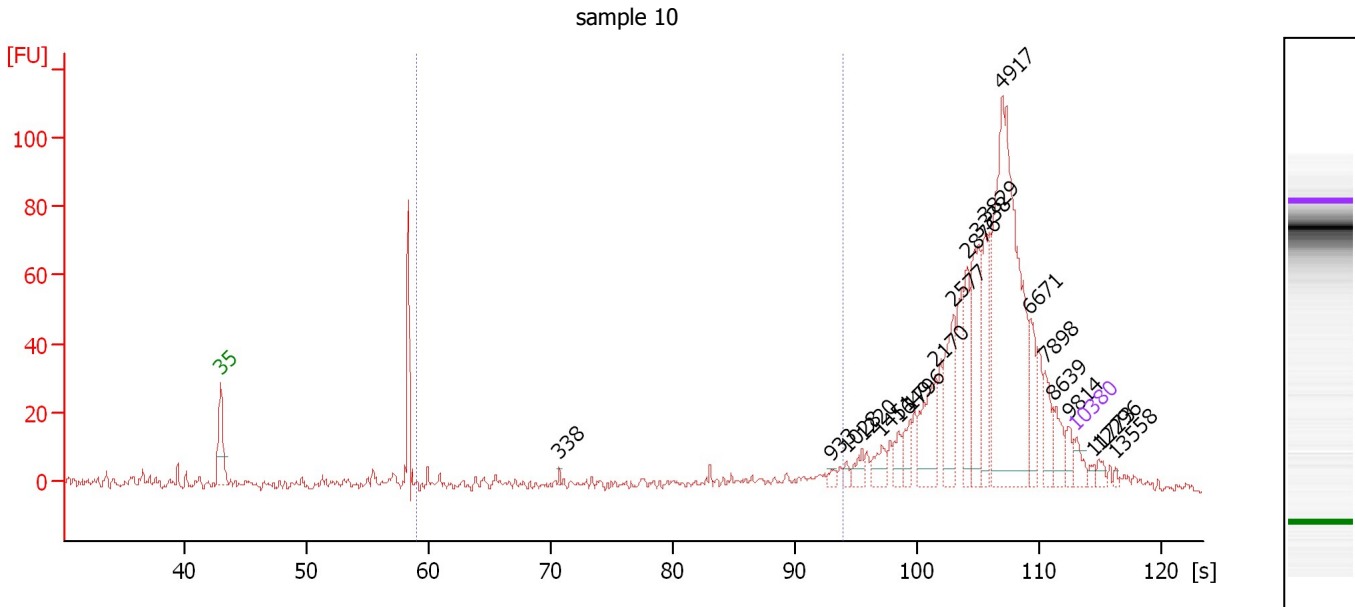
**Region table for sample 9 : sample 9**

From [s]	Molarity [pmol/l]	Average Size [bp]	Conc. [pg/μl]	To [s]	Corr. Area % of Total	Size distribution in CV [%]	Color	
59.03	1,584.9	204	213.04	94.03	9.0	0	1.5	

Assay Class: High Sensitivity DNA Assay  
 Data Path: C:\...ents and Settings\Bioanalyzer\2012-03-27\2012-03-27\_002.xad

Created: 3/27/2012 11:23:55 AM  
 Modified: 3/27/2012 12:05:16 PM

**Electropherogram Summary Continued ...**



**Overall Results for sample 10 : sample 10**

Number of peaks found: 20                      Corr. Area 1: 55.5  
 Noise: 1.3

**Peak table for sample 10 : sample 10**

Peak	Size [bp]	Conc. [pg/μl]	Molarity [pmol/l]	Observations
1	35	125.00	5,411.3	Lower Marker
2	338	19.42	86.9	
3	933	31.15	50.6	
4	1,028	33.62	49.5	
5	1,220	76.80	95.4	
6	1,451	107.59	112.4	
7	1,649	86.04	79.1	
8	1,796	100.76	85.0	
9	2,170	328.90	229.7	
10	2,577	340.29	200.1	
11	2,876	292.39	154.0	
12	3,338	455.88	206.9	
13	3,829	300.86	119.0	
14	4,917	1,823.20	561.8	
15	6,671	229.82	52.2	
16	7,898	141.53	27.1	
17	8,639	135.85	23.8	
18	9,814	68.81	10.6	
19	10,380	75.00	10.9	Upper Marker
20	11,773	0.00	0.0	
21	12,296	0.00	0.0	
22	13,558	0.00	0.0	

**Region table for sample 10 : sample 10**

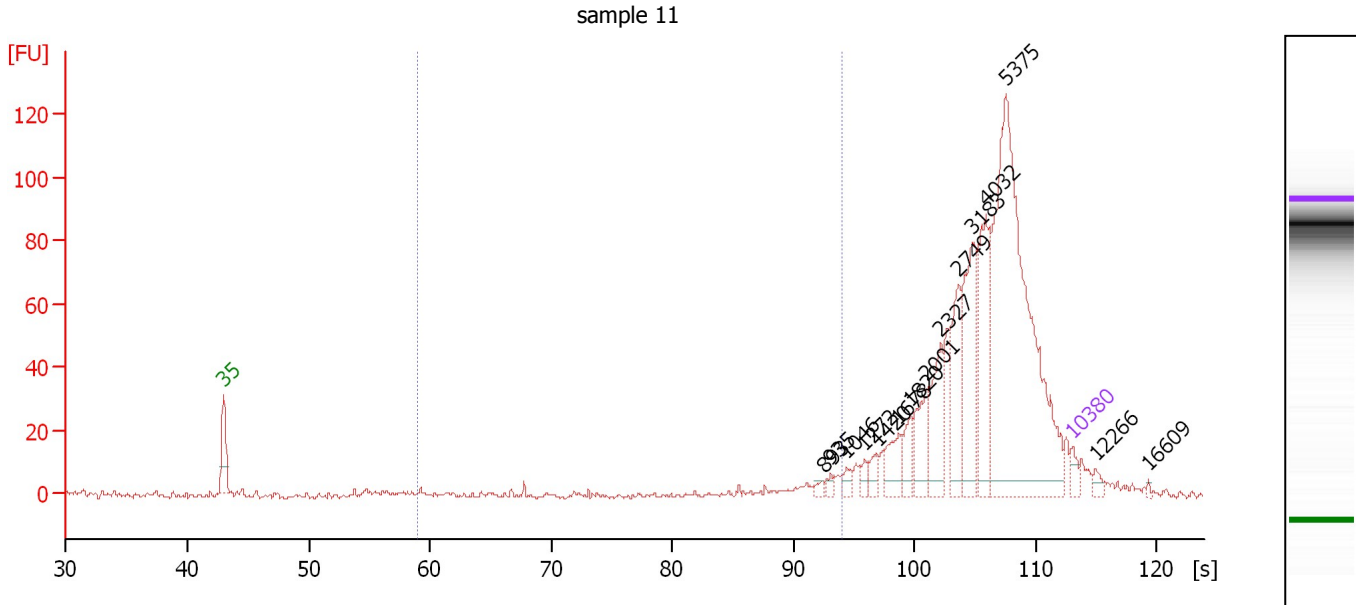
From [s]	Molarity [pmol/l]	Average Size [bp]	Conc. [pg/μl]	To [s]	Corr. Area	% of Total	Size distribution in CV [%]	Color
59.03	1,806.2	612	548.46	94.03	55.5	7	37.9	Blue



Assay Class: High Sensitivity DNA Assay  
 Data Path: C:\...ents and Settings\Bioanalyzer\2012-03-27\2012-03-27\_002.xad

Created: 3/27/2012 11:23:55 AM  
 Modified: 3/27/2012 12:05:16 PM

**Electropherogram Summary Continued ...**



**Overall Results for sample 11 : sample 11**

Number of peaks found: 15      Corr. Area 1: 28.3  
 Noise: 0.7

**Peak table for sample 11 : sample 11**

Peak	Size [bp]	Conc. [pg/μl]	Molarity [pmol/l]	Observations
1	35	125.00	5,411.3	Lower Marker
2	893	40.63	68.9	
3	935	40.42	65.5	
4	1,046	82.46	119.4	
5	1,272	75.63	90.1	
6	1,420	101.79	108.6	
7	1,678	249.31	225.1	
8	1,820	182.41	151.9	
9	2,001	337.75	255.7	
10	2,327	446.74	290.9	
11	2,749	487.63	268.8	
12	3,183	813.63	387.3	
13	4,032	728.73	273.9	
14	5,375	3,534.72	996.3	
15	10,380	75.00	10.9	Upper Marker
16	12,266	0.00	0.0	
17	16,609	0.00	0.0	

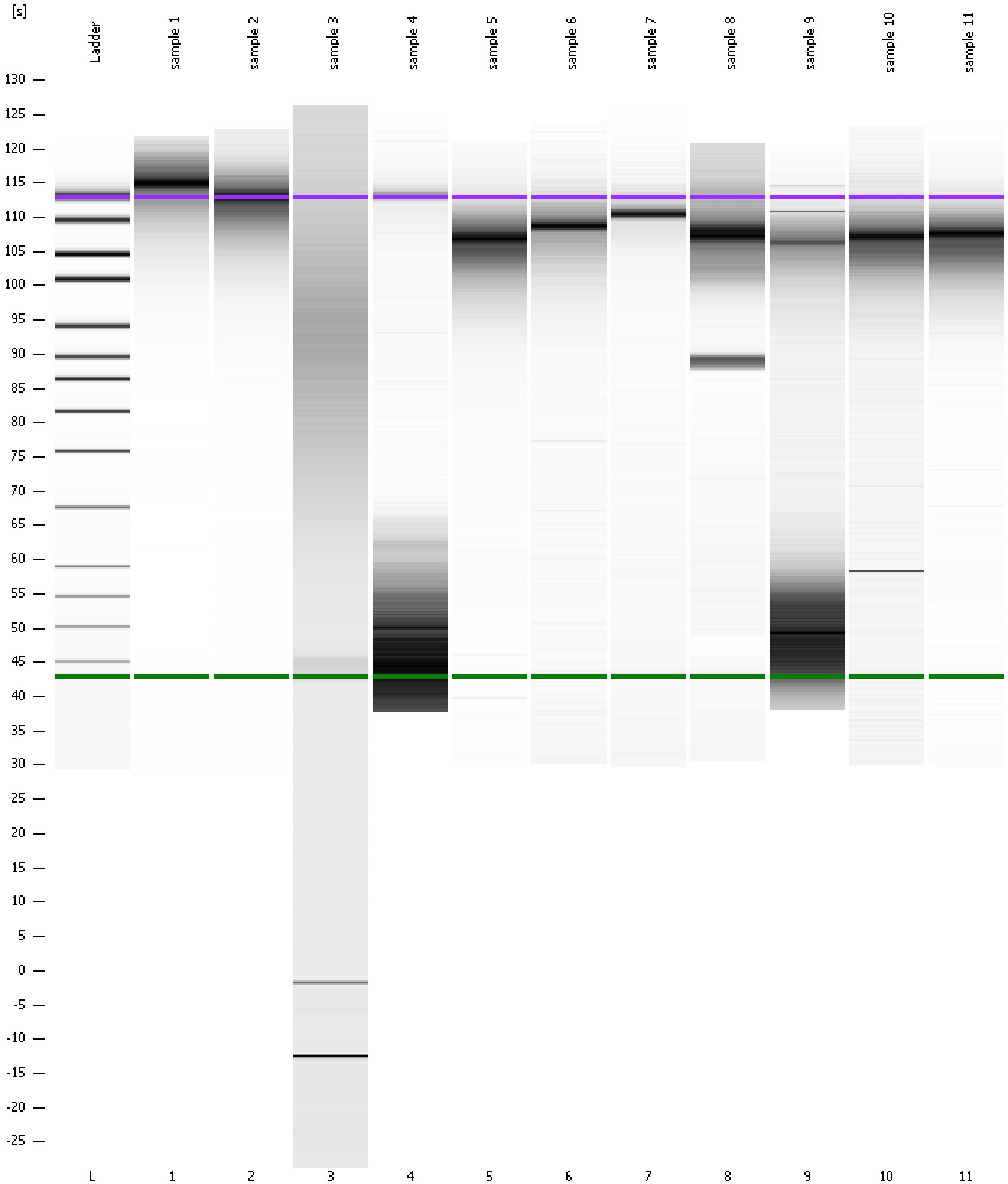
**Region table for sample 11 : sample 11**

From [s]	Molarity [pmol/l]	Average Size [bp]	Conc. [pg/μl]	To [s]	Corr. Area	% of Total	Size distribution in CV [%]	Color
59.03	729.9	779	318.76	94.03	28.3	3	24.0	Blue

Assay Class: High Sensitivity DNA Assay  
Data Path: C:\...ents and Settings\Bioanalyzer\2012-03-27\2012-03-27\_002.xad

Created: 3/27/2012 11:23:55 AM  
Modified: 3/27/2012 12:05:16 PM

**Gel Image**



Assay Class: High Sensitivity DNA Assay  
 Data Path: C:\...ents and Settings\Bioanalyzer\2012-03-27\2012-03-27\_002.xad

Created: 3/27/2012 11:23:55 AM  
 Modified: 3/27/2012 12:05:16 PM

**Run Logbook**

Description	Number	Source	Category	Sub Category	Time	Time Zone	User	Host
Run ended on port 1 (Number of wells acquired: 12)		Instrument	Run		3/27/2012 12:05:13 PM	(GMT --07:00) Pacific Standard Time	UC Davis	D8XSMGH1
Run started on port 1 (File: C:\Documents and Settings\Bioanalyzer\2012-03-27\2012-03-27_002.xad)		Instrument	Run		3/27/2012 11:24:01 AM	(GMT --07:00) Pacific Standard Time	UC Davis	D8XSMGH1
Product Number : G2938B		Instrument	Run		3/27/2012 11:24:01 AM	(GMT --07:00) Pacific Standard Time	UC Davis	D8XSMGH1
Name :		Instrument	Run		3/27/2012 11:24:01 AM	(GMT --07:00) Pacific Standard Time	UC Davis	D8XSMGH1
Vendor : Agilent Technologies		Instrument	Run		3/27/2012 11:24:01 AM	(GMT --07:00) Pacific Standard Time	UC Davis	D8XSMGH1
Serial# : DE13701086		Instrument	Run		3/27/2012 11:24:01 AM	(GMT --07:00) Pacific Standard Time	UC Davis	D8XSMGH1
Firmware : C.01.069		Instrument	Run		3/27/2012 11:24:01 AM	(GMT --07:00) Pacific Standard Time	UC Davis	D8XSMGH1
Cartridge : Electrode		Instrument	Run		3/27/2012 11:24:01 AM	(GMT --07:00) Pacific Standard Time	UC Davis	D8XSMGH1