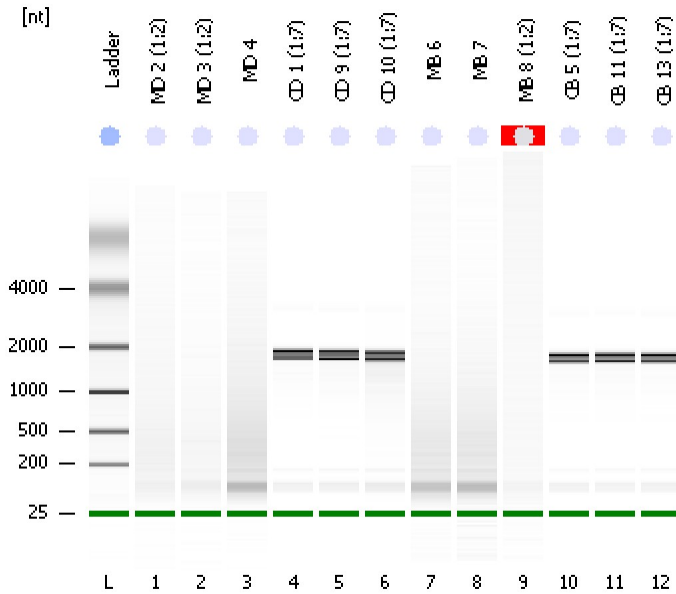


Assay Class: Eukaryote Total RNA Nano
Data Path: C:\...ents and Settings\Bioanalyzer\2012-03-27\2012-03-27_004.xad

Created: 3/27/2012 1:46:14 PM
Modified: 3/27/2012 2:53:08 PM

Electrophoresis File Run Summary



Instrument Information:

Instrument Name: DE13701086 Firmware: C.01.069
Serial#: DE13701086 Type: G2938B

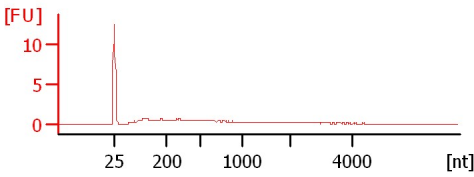
Assay Information:

Assay Origin Path: C:\Program Files\Agilent\2100 bioanalyzer\2100 expert\assays\RNA\Eukaryote Total RNA Nano Series II.xsy
Assay Class: Eukaryote Total RNA Nano
Version: 2.6
Assay Comments: Total RNA Analysis ng sensitivity (Eukaryote)
© Copyright 2003 - 2009 Agilent Technologies, Inc.

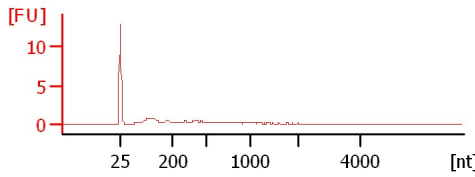
Chip Information:

Chip Lot #:
Reagent Kit Lot #:
Chip Comments:

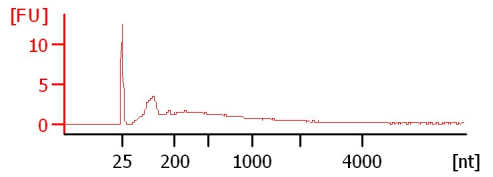
MD 2 (1:2)
RIN:1



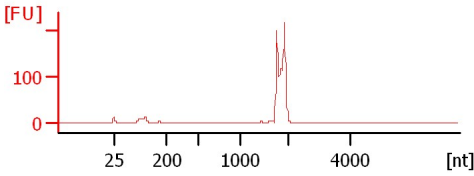
MD 3 (1:2)
RIN:1



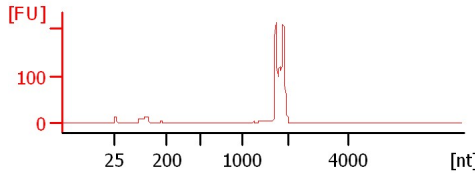
MD 4
RIN: 2.20



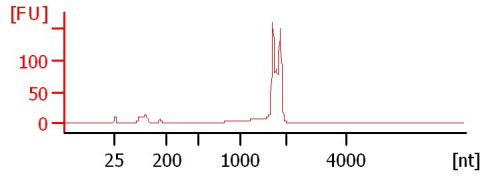
CD 1 (1:7)
RIN: 6.60



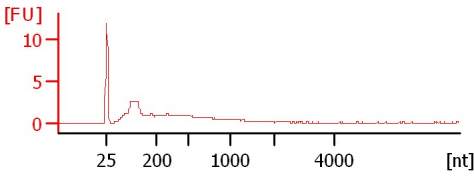
CD 9 (1:7)
RIN: 6.20



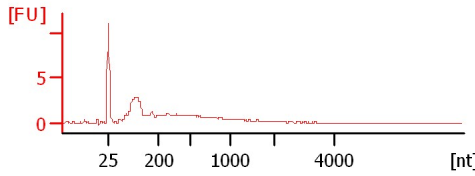
CD 10 (1:7)
RIN: 6.40



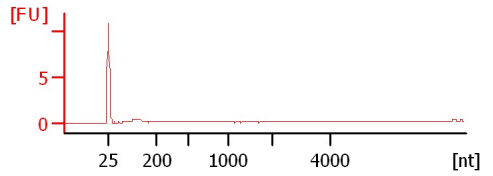
MB 6
RIN:2



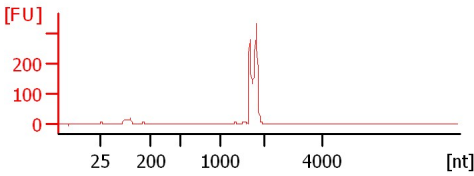
MB 7
RIN: 2.20



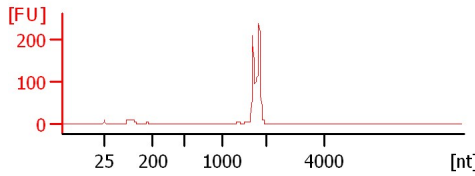
MB 8 (1:2)
RIN N/A



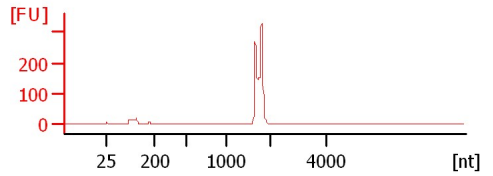
CB 5 (1:7)
RIN: 6.60



CB 11 (1:7)
RIN: 6.60



CB 13 (1:7)
RIN: 6.50



Assay Class: Eukaryote Total RNA Nano
 Data Path: C:\...ents and Settings\Bioanalyzer\2012-03-27\2012-03-27_004.xad

Created: 3/27/2012 1:46:14 PM
 Modified: 3/27/2012 2:53:08 PM

Electrophoresis File Run Summary (Chip Summary)

Sample Name	Sample Comment	Status	Result Label	Result Color
MD 2 (1:2)		✓	RIN:1	
MD 3 (1:2)		✓	RIN:1	
MD 4		✓	RIN: 2.20	
CD 1 (1:7)		✓	RIN: 6.60	
CD 9 (1:7)		✓	RIN: 6.20	
CD 10 (1:7)		✓	RIN: 6.40	
MB 6		✓	RIN:2	
MB 7		✓	RIN: 2.20	
MB 8 (1:2)		✓	RIN N/A	
CB 5 (1:7)		✓	RIN: 6.60	
CB 11 (1:7)		✓	RIN: 6.60	
CB 13 (1:7)		✓	RIN: 6.50	
Ladder		✓	All Other Samples	

Chip Lot #

Reagent Kit Lot #

Chip Comments :

Assay Class: Eukaryote Total RNA Nano
Data Path: C:\...ents and Settings\Bioanalyzer\2012-03-27\2012-03-27_004.xad

Created: 3/27/2012 1:46:14 PM
Modified: 3/27/2012 2:53:08 PM

Electrophoresis Assay Details

General Analysis Settings

Number of Available Sample and Ladder Wells (Max.) : 13
Minimum Visible Range [s] : 17
Maximum Visible Range [s] : 70
Start Analysis Time Range [s] : 19
End Analysis Time Range [s] : 69
Ladder Concentration [ng/μl] : 150
Lower Marker Concentration [ng/μl] : 0
Upper Marker Concentration [ng/μl] : 0
Used Lower Marker for Quantitation
Standard Curve Fit is Logarithmic
Show Data Aligned to Lower Marker

Integrator Settings

Integration Start Time [s] : 19
Integration End Time [s] : 69
Slope Threshold : 0.6
Height Threshold [FU] : 0.5
Area Threshold : 0.2
Width Threshold [s] : 0.5
Baseline Plateau [s] : 6

Filter Settings

Filter Width [s] : 0.5
Polynomial Order : 4

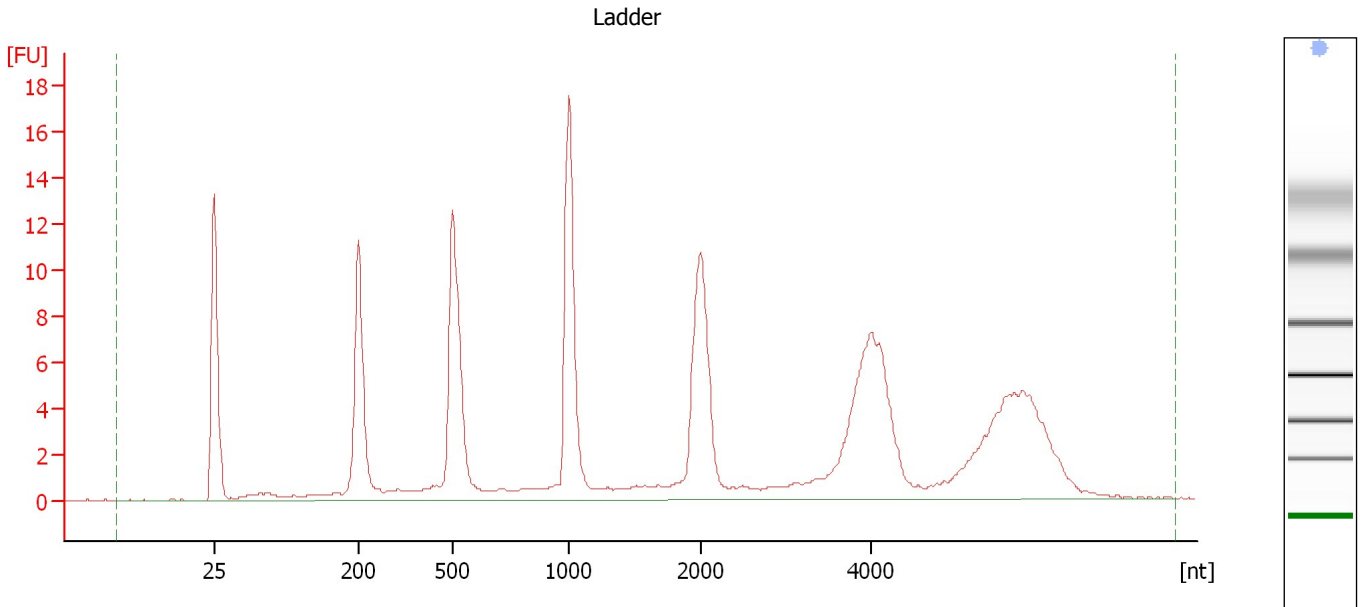
Ladder

Ladder Peak	Size
1	25
2	200
3	500
4	1000
5	2000
6	4000

Assay Class: Eukaryote Total RNA Nano
Data Path: C:\...ents and Settings\Bioanalyzer\2012-03-27\2012-03-27_004.xad

Created: 3/27/2012 1:46:14 PM
Modified: 3/27/2012 2:53:08 PM

Electropherogram Summary



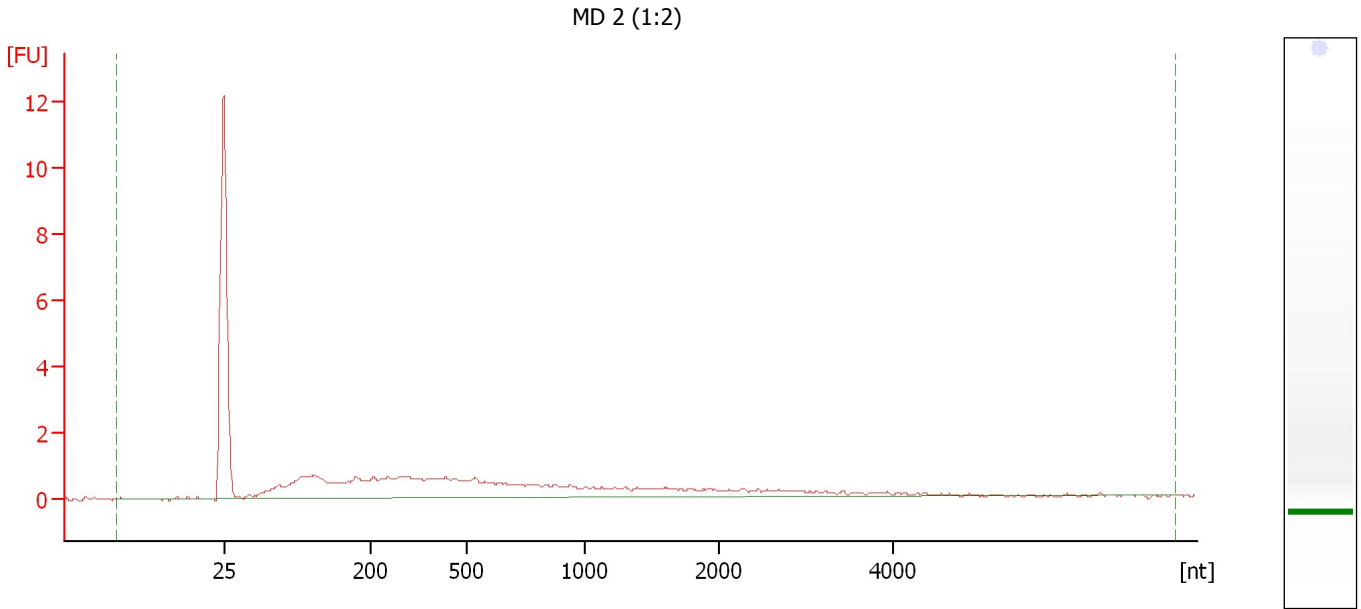
Overall Results for Ladder

RNA Area:	158.8	Result Flagging Color:	
RNA Concentration:	150 ng/ μ l	Result Flagging Label:	All Other Samples

Assay Class: Eukaryote Total RNA Nano
Data Path: C:\...ents and Settings\Bioanalyzer\2012-03-27\2012-03-27_004.xad

Created: 3/27/2012 1:46:14 PM
Modified: 3/27/2012 2:53:08 PM

Electropherogram Summary Continued ...



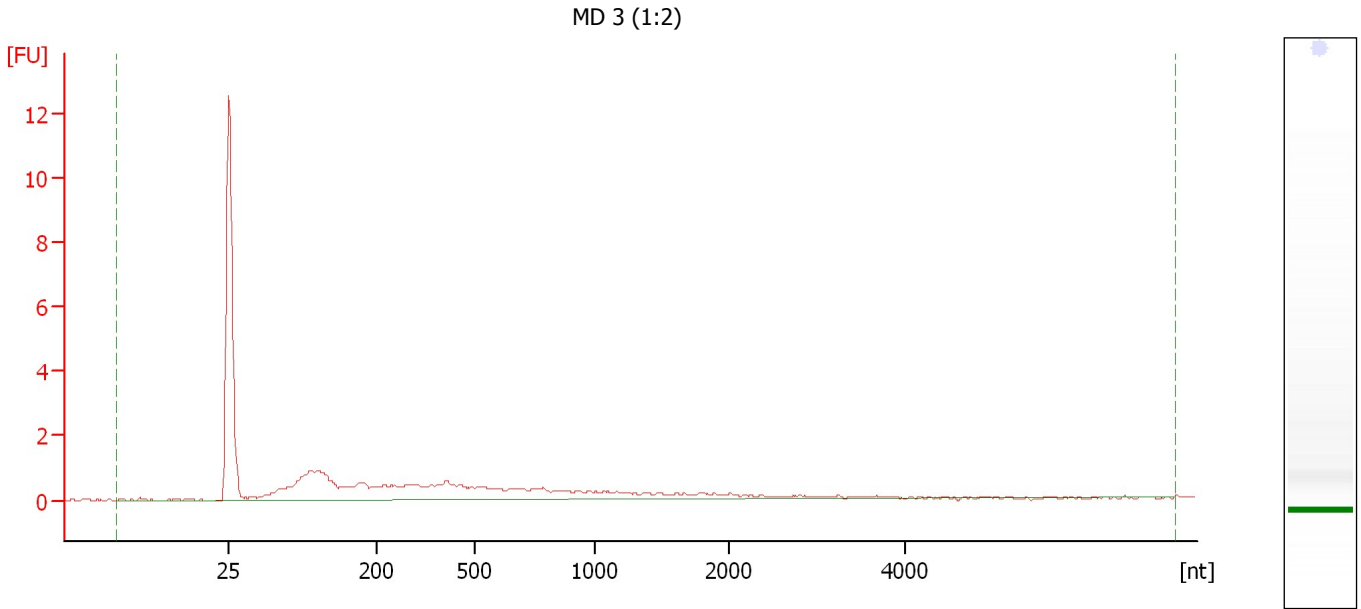
Overall Results for sample 1 : MD 2 (1:2)

RNA Area:	29.9	RNA Integrity Number (RIN):	1 (B.02.08)
RNA Concentration:	28 ng/μl	Result Flagging Color:	
rRNA Ratio [28s / 18s]:	0.0	Result Flagging Label:	RIN:1

Assay Class: Eukaryote Total RNA Nano
Data Path: C:\...ents and Settings\Bioanalyzer\2012-03-27\2012-03-27_004.xad

Created: 3/27/2012 1:46:14 PM
Modified: 3/27/2012 2:53:08 PM

Electropherogram Summary Continued ...



Overall Results for sample 2 : MD 3 (1:2)

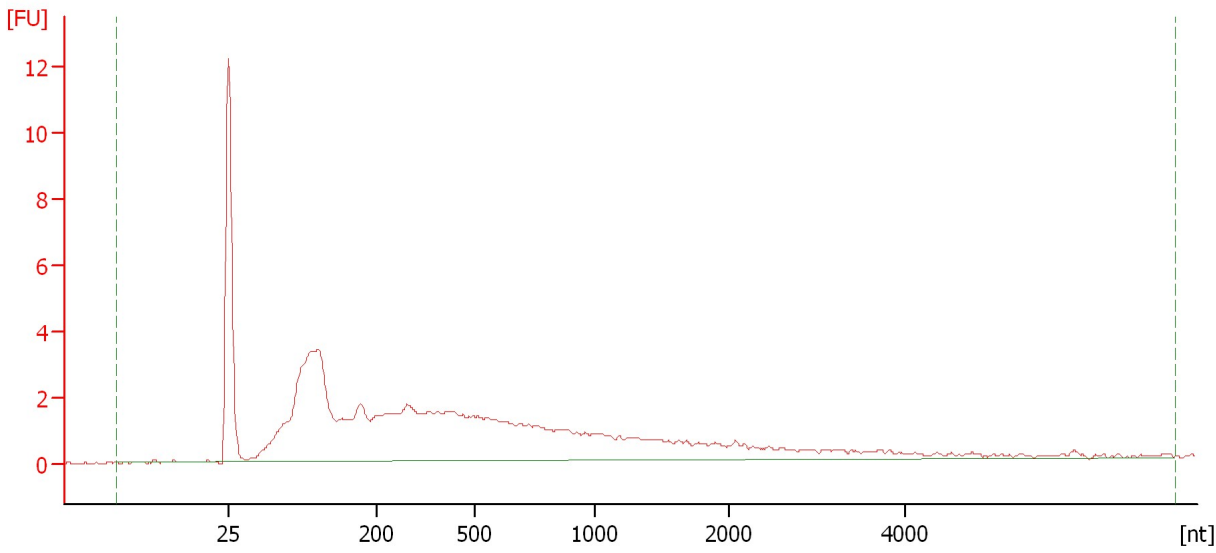
RNA Area:	22.9	RNA Integrity Number (RIN):	1 (B.02.08)
RNA Concentration:	22 ng/μl	Result Flagging Color:	
rRNA Ratio [28s / 18s]:	0.0	Result Flagging Label:	RIN:1

Assay Class: Eukaryote Total RNA Nano
Data Path: C:\...ents and Settings\Bioanalyzer\2012-03-27\2012-03-27_004.xad

Created: 3/27/2012 1:46:14 PM
Modified: 3/27/2012 2:53:08 PM

Electropherogram Summary Continued ...

MD 4



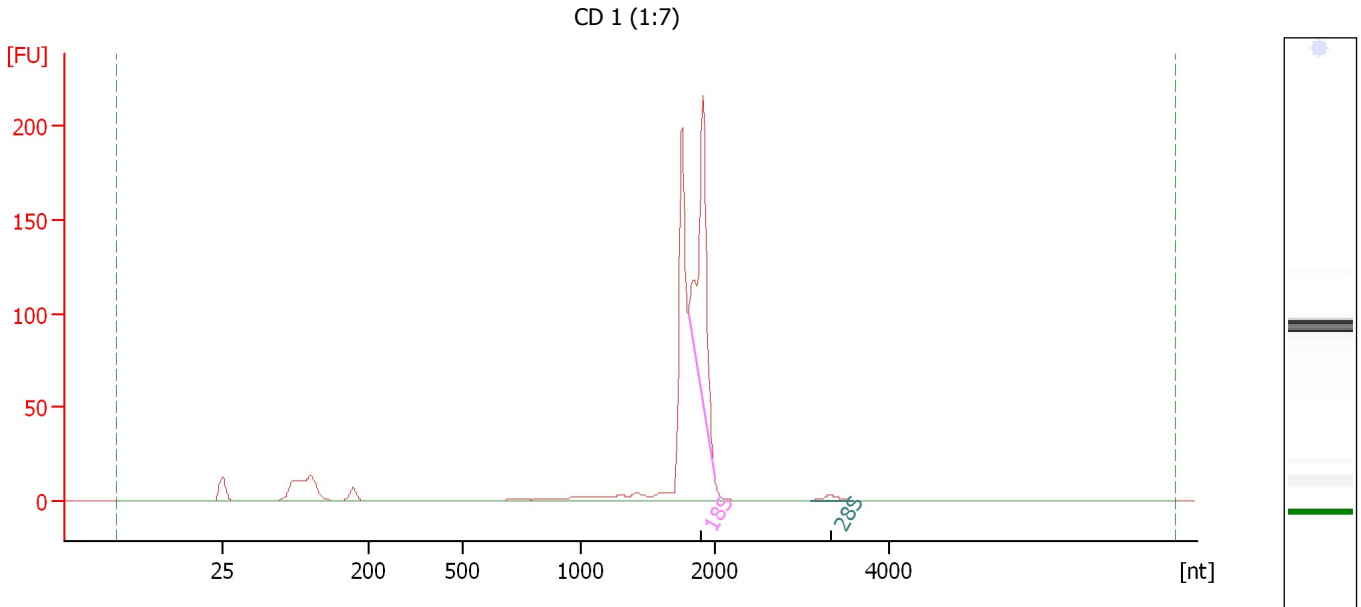
Overall Results for sample 3 : MD 4

RNA Area:	80.9	RNA Integrity Number (RIN):	2.2 (B.02.08)
RNA Concentration:	76 ng/μl	Result Flagging Color:	
rRNA Ratio [28s / 18s]:	0.0	Result Flagging Label:	RIN: 2.20

Assay Class: Eukaryote Total RNA Nano
Data Path: C:\...ents and Settings\Bioanalyzer\2012-03-27\2012-03-27_004.xad

Created: 3/27/2012 1:46:14 PM
Modified: 3/27/2012 2:53:08 PM

Electropherogram Summary Continued ...



Overall Results for sample 4 : CD 1 (1:7)

RNA Area: 595.0 RNA Integrity Number (RIN): 6.6 (B.02.08, Anomaly Threshold(s) manually adapted)
RNA Concentration: 562 ng/μl
rRNA Ratio [28s / 18s]: 0.0
Result Flagging Color:
Result Flagging Label: RIN: 6.60

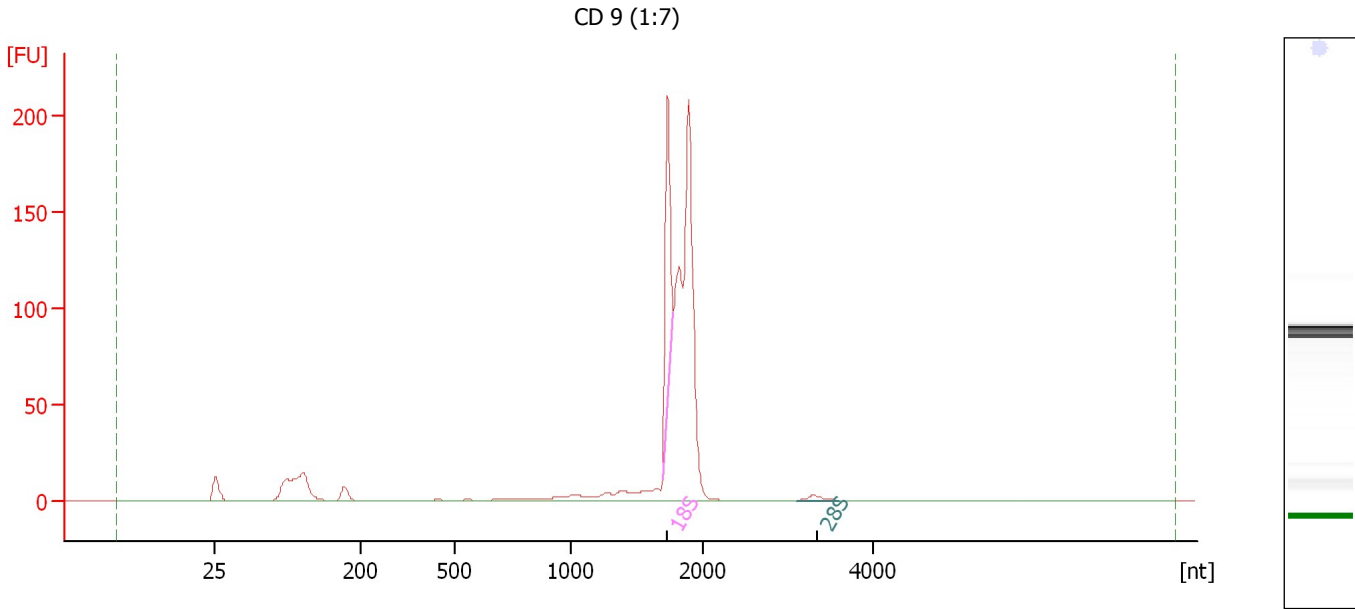
Fragment table for sample 4 : CD 1 (1:7)

Name	Start Size [nt]	End Size [nt]	Area	% of total Area
18S	1,802	1,995	153.1	25.7
28S	3,113	3,594	4.0	0.7

Assay Class: Eukaryote Total RNA Nano
Data Path: C:\...ents and Settings\Bioanalyzer\2012-03-27\2012-03-27_004.xad

Created: 3/27/2012 1:46:14 PM
Modified: 3/27/2012 2:53:08 PM

Electropherogram Summary Continued ...



Overall Results for sample 5 : CD 9 (1:7)

RNA Area: 618.9 RNA Integrity Number (RIN): 6.2 (B.02.08)
RNA Concentration: 584 ng/μl Result Flagging Color:
rRNA Ratio [28s / 18s]: 0.0 Result Flagging Label: RIN: 6.20

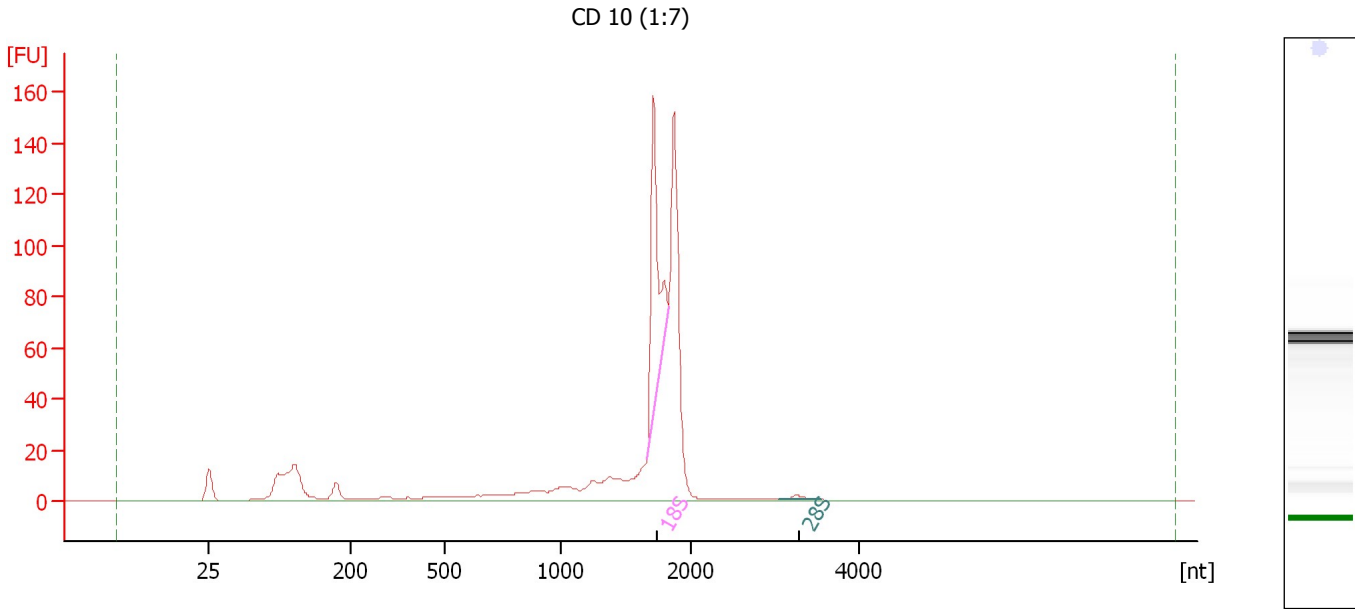
Fragment table for sample 5 : CD 9 (1:7)

Name	Start Size [nt]	End Size [nt]	Area	% of total Area
18S	1,692	1,781	95.0	15.3
28S	3,110	3,584	3.7	0.6

Assay Class: Eukaryote Total RNA Nano
Data Path: C:\...ents and Settings\Bioanalyzer\2012-03-27\2012-03-27_004.xad

Created: 3/27/2012 1:46:14 PM
Modified: 3/27/2012 2:53:08 PM

Electropherogram Summary Continued ...



Overall Results for sample 6 : CD 10 (1:7)

RNA Area: 576.7 RNA Integrity Number (RIN): 6.4 (B.02.08)
RNA Concentration: 545 ng/μl Result Flagging Color:
rRNA Ratio [28s / 18s]: 0.0 Result Flagging Label: RIN: 6.40

Fragment table for sample 6 : CD 10 (1:7)

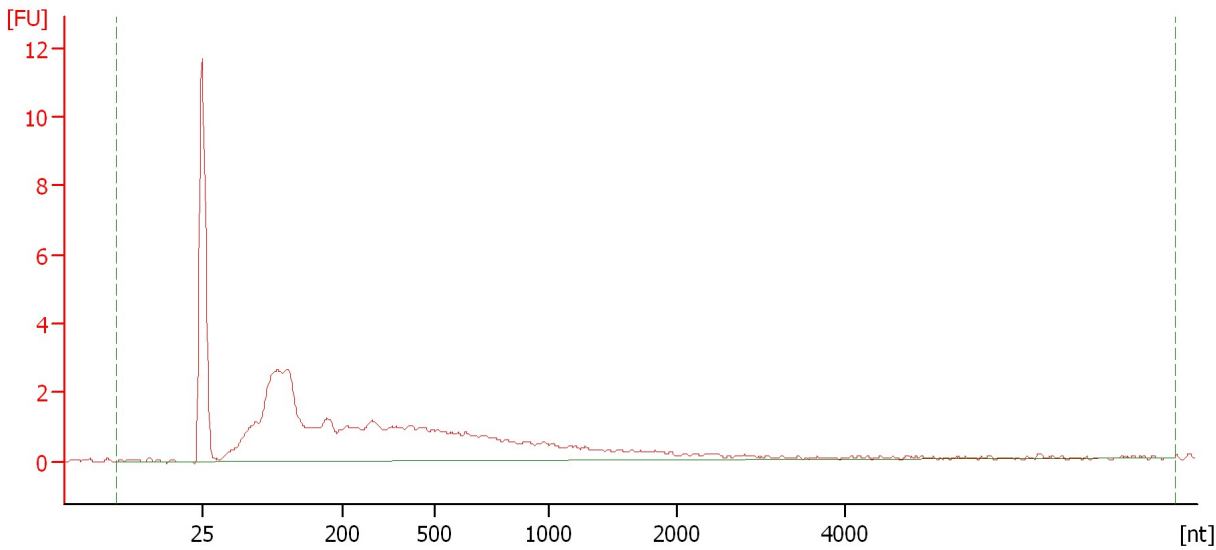
Name	Start Size [nt]	End Size [nt]	Area	% of total Area
18S	1,669	1,833	103.6	18.0
28S	3,057	3,537	2.4	0.4

Assay Class: Eukaryote Total RNA Nano
Data Path: C:\...ents and Settings\Bioanalyzer\2012-03-27\2012-03-27_004.xad

Created: 3/27/2012 1:46:14 PM
Modified: 3/27/2012 2:53:08 PM

Electropherogram Summary Continued ...

MB 6



Overall Results for sample 7 : MB 6

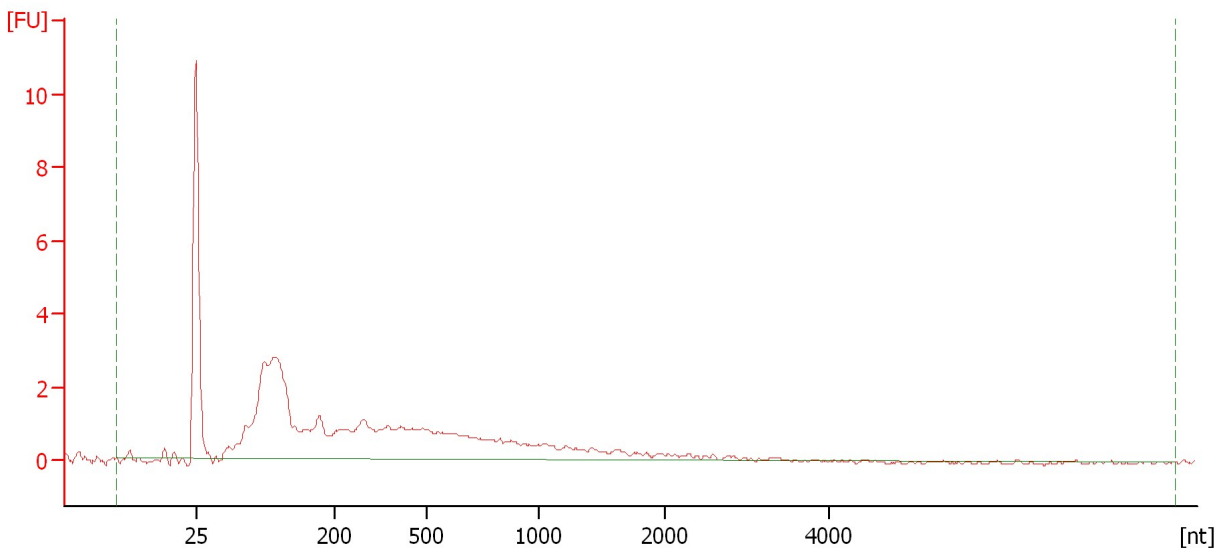
RNA Area:	57.3	RNA Integrity Number (RIN):	2 (B.02.08)
RNA Concentration:	54 ng/μl	Result Flagging Color:	
rRNA Ratio [28s / 18s]:	0.0	Result Flagging Label:	RIN:2

Assay Class: Eukaryote Total RNA Nano
Data Path: C:\...ents and Settings\Bioanalyzer\2012-03-27\2012-03-27_004.xad

Created: 3/27/2012 1:46:14 PM
Modified: 3/27/2012 2:53:08 PM

Electropherogram Summary Continued ...

MB 7



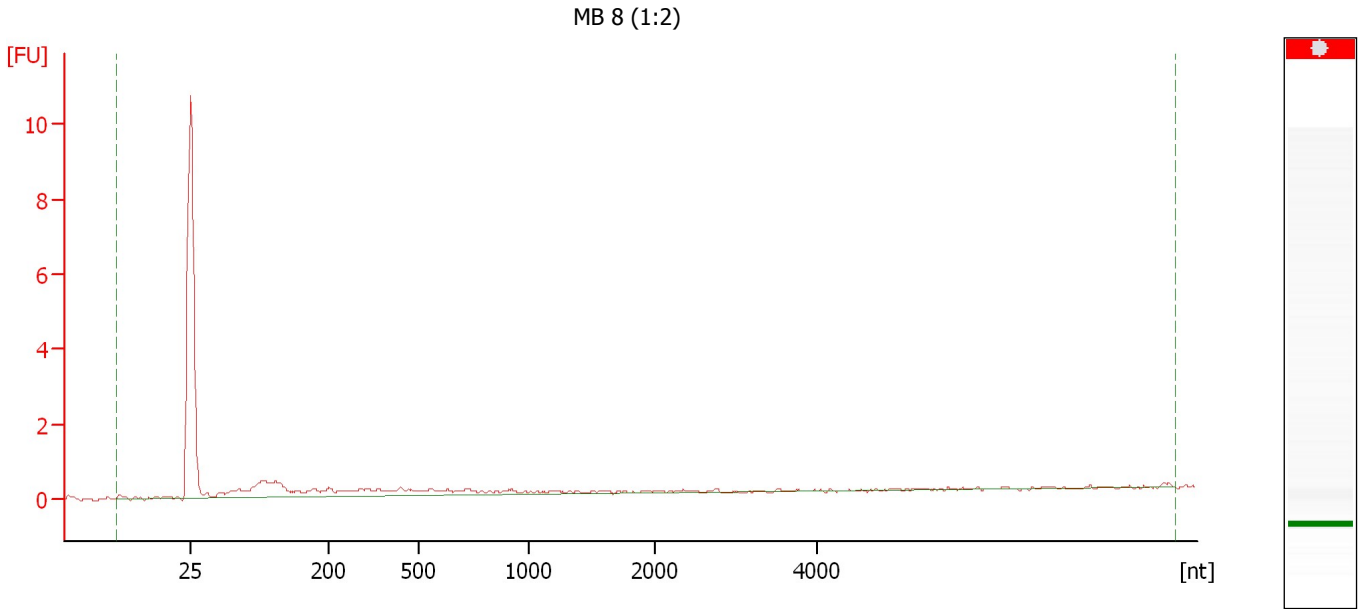
Overall Results for sample 8 : MB 7

RNA Area:	45.7	RNA Integrity Number (RIN):	2.2 (B.02.08)
RNA Concentration:	43 ng/μl	Result Flagging Color:	
rRNA Ratio [28s / 18s]:	0.0	Result Flagging Label:	RIN: 2.20

Assay Class: Eukaryote Total RNA Nano
Data Path: C:\...ents and Settings\Bioanalyzer\2012-03-27\2012-03-27_004.xad

Created: 3/27/2012 1:46:14 PM
Modified: 3/27/2012 2:53:08 PM

Electropherogram Summary Continued ...



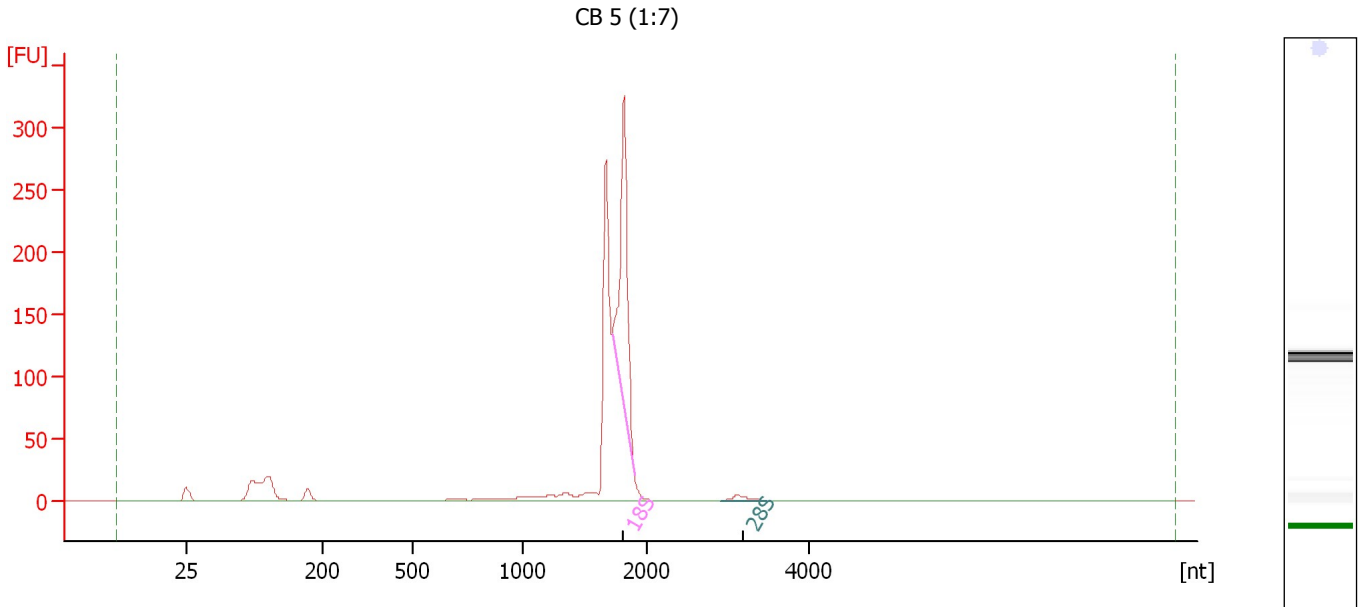
Overall Results for sample 9 : MB 8 (1:2)

RNA Area:	9.8	RNA Integrity Number (RIN):	N/A (B.02.08)
RNA Concentration:	9 ng/μl	Result Flagging Color:	
rRNA Ratio [28s / 18s]:	0.0	Result Flagging Label:	RIN N/A

Assay Class: Eukaryote Total RNA Nano
Data Path: C:\...ents and Settings\Bioanalyzer\2012-03-27\2012-03-27_004.xad

Created: 3/27/2012 1:46:14 PM
Modified: 3/27/2012 2:53:08 PM

Electropherogram Summary Continued ...



Overall Results for sample 10 : CB 5 (1:7)

RNA Area:	831.0	RNA Integrity Number (RIN):	6.6 (B.02.08, Anomaly Threshold(s) manually adapted)
RNA Concentration:	785 ng/μl	Result Flagging Color:	
rRNA Ratio [28s / 18s]:	0.0	Result Flagging Label:	RIN: 6.60

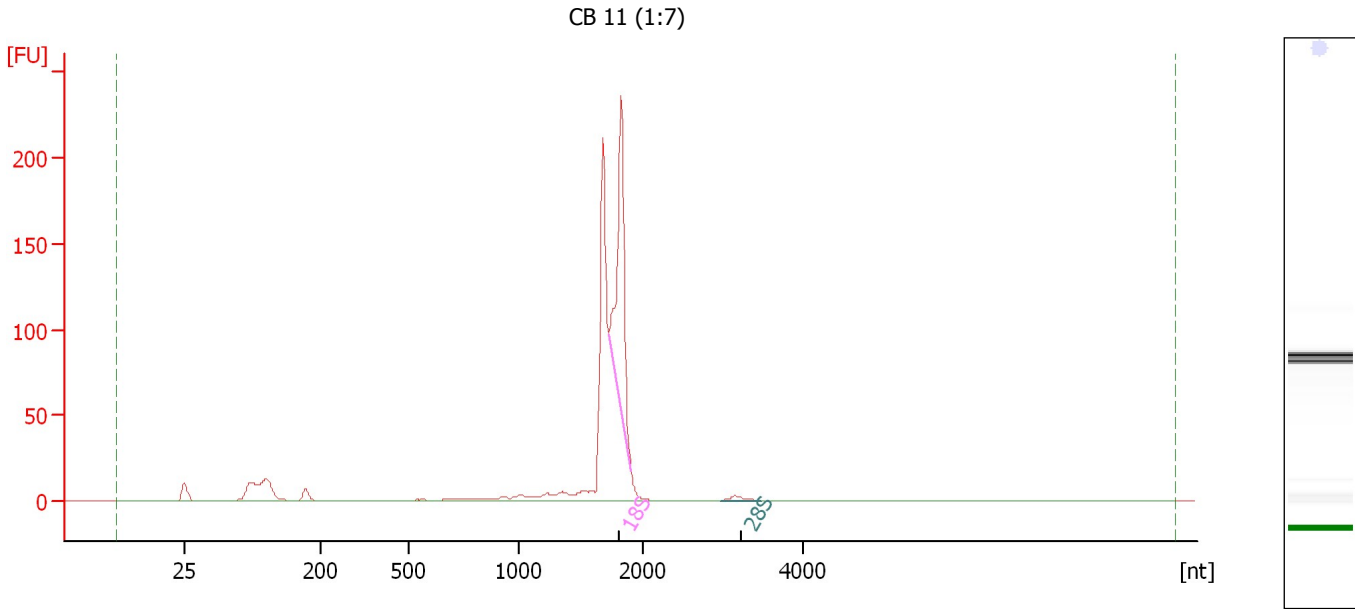
Fragment table for sample 10 : CB 5 (1:7)

Name	Start Size [nt]	End Size [nt]	Area	% of total Area
18S	1,730	1,901	219.0	26.4
28S	2,932	3,487	5.7	0.7

Assay Class: Eukaryote Total RNA Nano
Data Path: C:\...ents and Settings\Bioanalyzer\2012-03-27\2012-03-27_004.xad

Created: 3/27/2012 1:46:14 PM
Modified: 3/27/2012 2:53:08 PM

Electropherogram Summary Continued ...



Overall Results for sample 11 : CB 11 (1:7)

RNA Area:	620.2	RNA Integrity Number (RIN):	6.6 (B.02.08, Anomaly Threshold(s) manually adapted)
RNA Concentration:	586 ng/μl	Result Flagging Color:	
rRNA Ratio [28s / 18s]:	0.0	Result Flagging Label:	RIN: 6.60

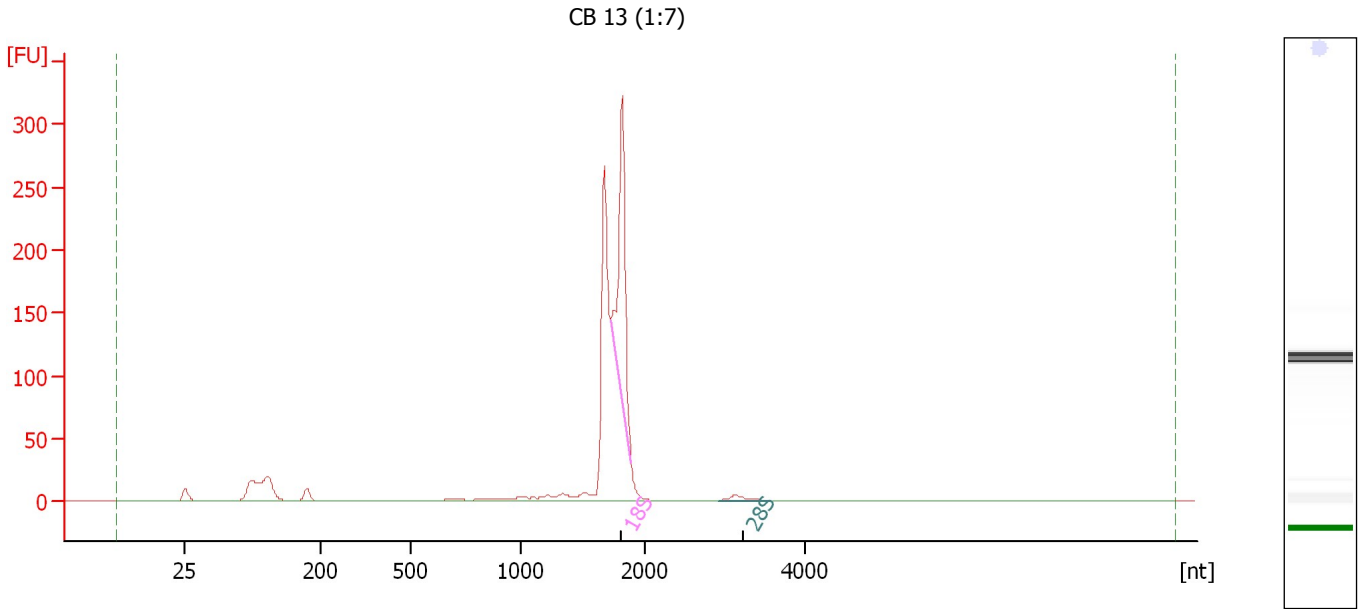
Fragment table for sample 11 : CB 11 (1:7)

Name	Start Size [nt]	End Size [nt]	Area	% of total Area
18S	1,727	1,909	160.9	25.9
28S	2,988	3,466	3.3	0.5

Assay Class: Eukaryote Total RNA Nano
 Data Path: C:\...ents and Settings\Bioanalyzer\2012-03-27\2012-03-27_004.xad

Created: 3/27/2012 1:46:14 PM
 Modified: 3/27/2012 2:53:08 PM

Electropherogram Summary Continued ...



Overall Results for sample 12 : CB 13 (1:7)

RNA Area:	817.5	RNA Integrity Number (RIN):	6.5 (B.02.08, Anomaly Threshold(s) manually adapted)
RNA Concentration:	772 ng/μl	Result Flagging Color:	
rRNA Ratio [28s / 18s]:	0.0	Result Flagging Label:	RIN: 6.50

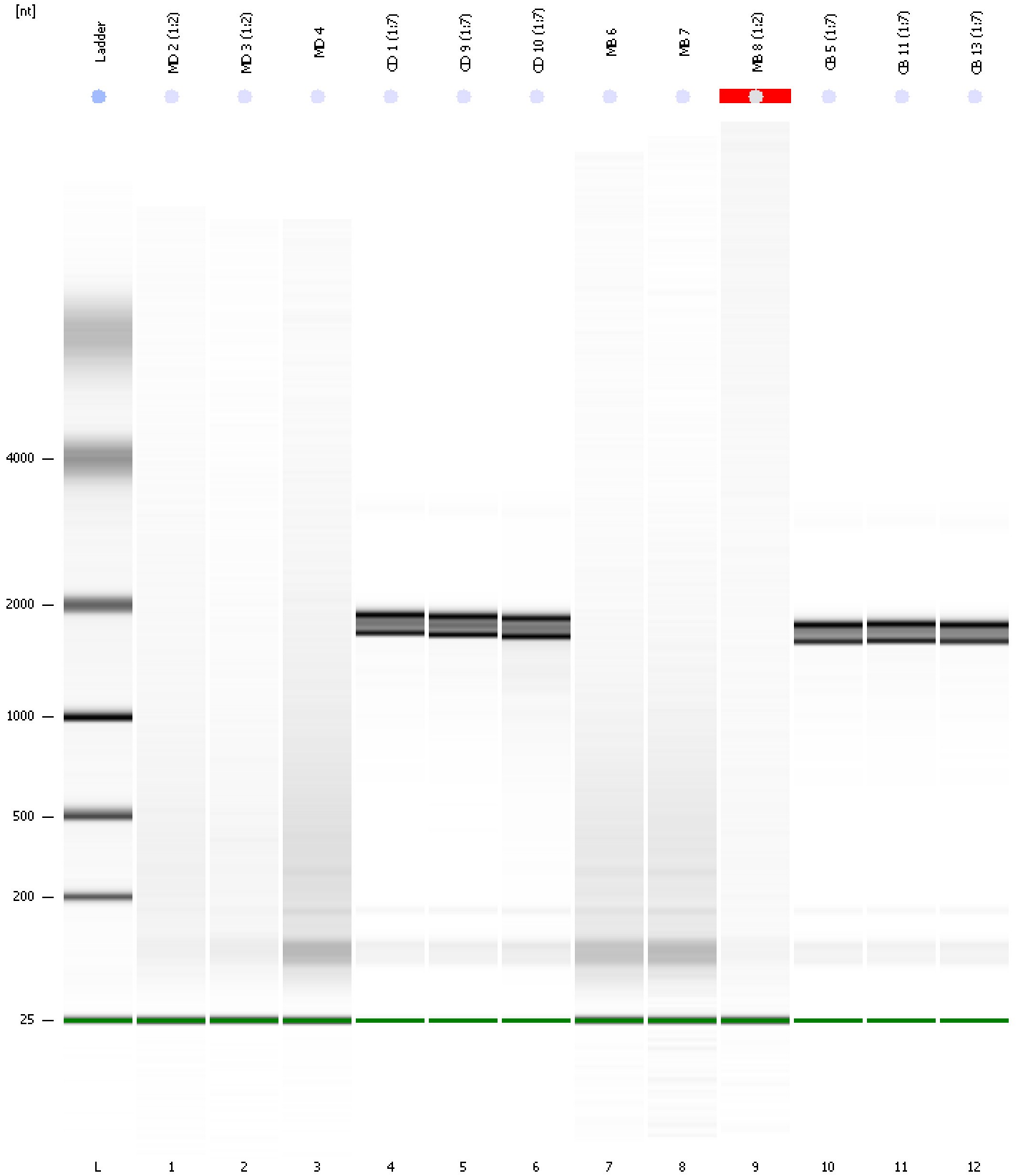
Fragment table for sample 12 : CB 13 (1:7)

Name	Start Size [nt]	End Size [nt]	Area	% of total Area
18S	1,729	1,892	199.0	24.3
28S	2,920	3,543	6.7	0.8

Assay Class: Eukaryote Total RNA Nano
Data Path: C:\...ents and Settings\Bioanalyzer\2012-03-27\2012-03-27_004.xad

Created: 3/27/2012 1:46:14 PM
Modified: 3/27/2012 2:53:08 PM

Gel Image



Assay Class: Eukaryote Total RNA Nano
 Data Path: C:\...ents and Settings\Bioanalyzer\2012-03-27\2012-03-27_004.xad

Created: 3/27/2012 1:46:14 PM
 Modified: 3/27/2012 2:53:08 PM

Run Logbook

Description	Number	Source	Category	Sub Category	Time	Time Zone	User	Host
Run ended on port 1 (Number of wells acquired: 13)		Instrument	Run		3/27/2012 2:10:04 PM	(GMT --07:00) Pacific Standard Time	UC Davis	D8XSMGH1
Run started on port 1 (File: C:\Documents and Settings\Bioanalyzer\2012-03-27\2012-03-27_004.xad)		Instrument	Run		3/27/2012 1:46:20 PM	(GMT --07:00) Pacific Standard Time	UC Davis	D8XSMGH1
Product Number : G2938B		Instrument	Run		3/27/2012 1:46:20 PM	(GMT --07:00) Pacific Standard Time	UC Davis	D8XSMGH1
Name :		Instrument	Run		3/27/2012 1:46:20 PM	(GMT --07:00) Pacific Standard Time	UC Davis	D8XSMGH1
Vendor : Agilent Technologies		Instrument	Run		3/27/2012 1:46:20 PM	(GMT --07:00) Pacific Standard Time	UC Davis	D8XSMGH1
Serial# : DE13701086		Instrument	Run		3/27/2012 1:46:20 PM	(GMT --07:00) Pacific Standard Time	UC Davis	D8XSMGH1
Firmware : C.01.069		Instrument	Run		3/27/2012 1:46:20 PM	(GMT --07:00) Pacific Standard Time	UC Davis	D8XSMGH1
Cartridge : Electrode		Instrument	Run		3/27/2012 1:46:20 PM	(GMT --07:00) Pacific Standard Time	UC Davis	D8XSMGH1