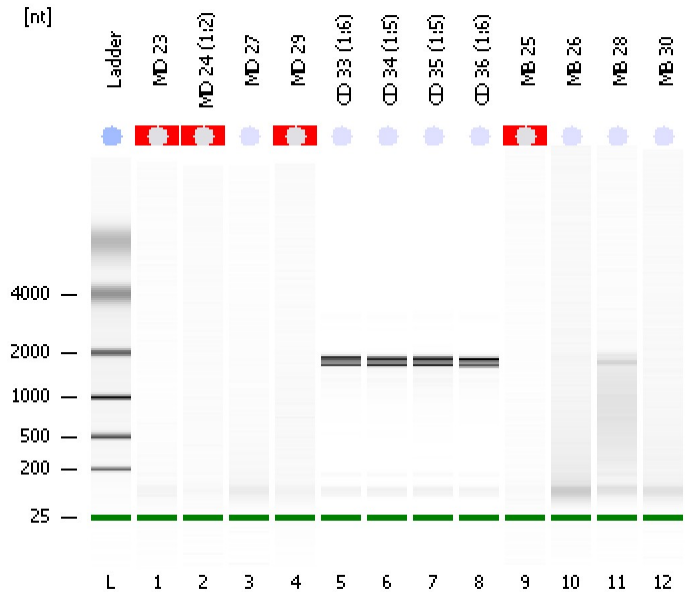


Assay Class: Eukaryote Total RNA Nano  
Data Path: C:\...ents and Settings\Bioanalyzer\2012-03-27\2012-03-27\_006.xad

Created: 3/27/2012 3:19:59 PM  
Modified: 3/27/2012 3:43:08 PM

**Electrophoresis File Run Summary**



Instrument Information:

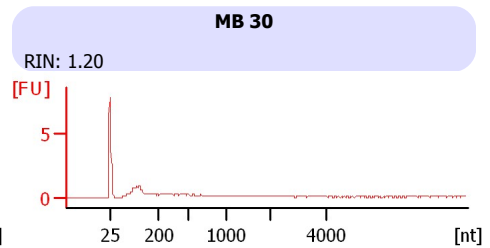
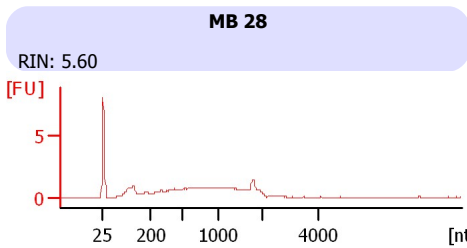
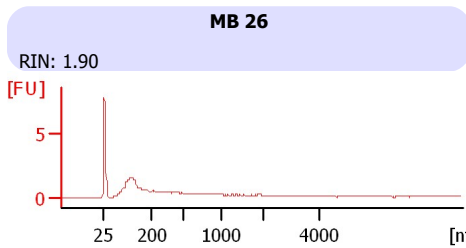
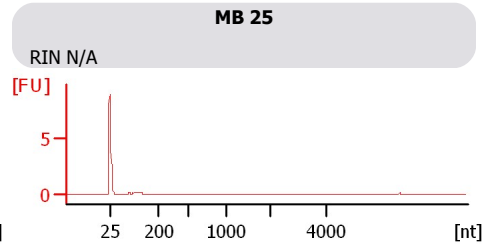
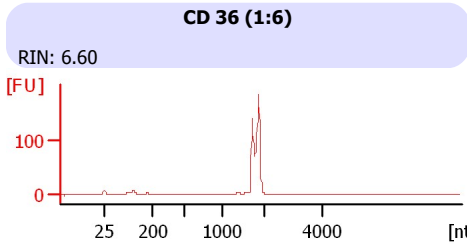
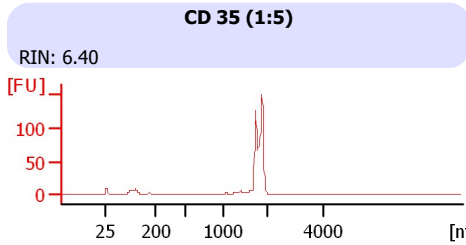
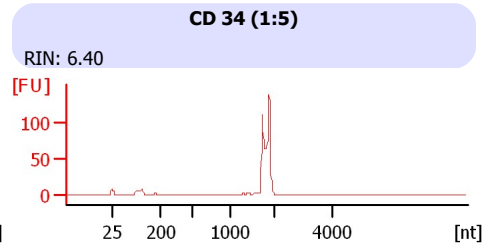
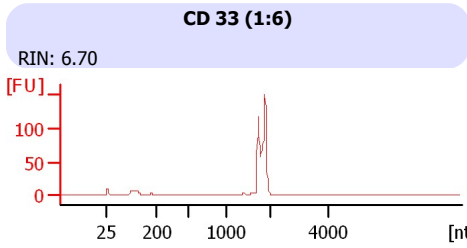
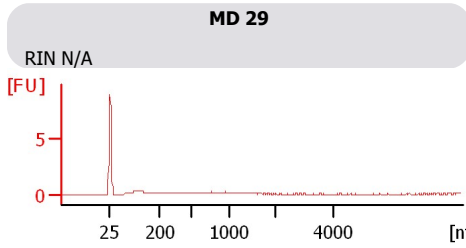
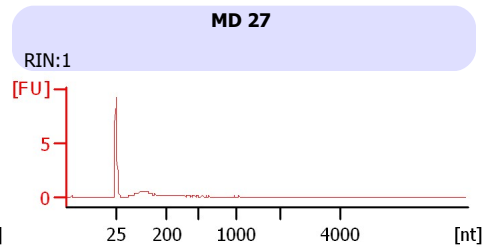
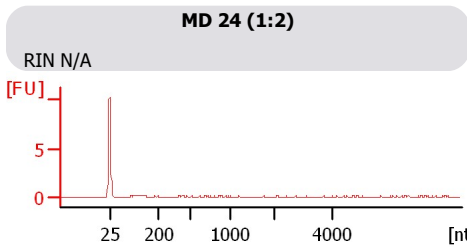
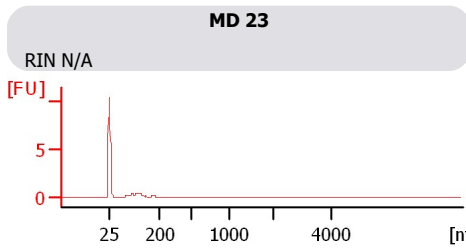
Instrument Name: DE13701086      Firmware: C.01.069  
Serial#: DE13701086      Type: G2938B

Assay Information:

Assay Origin Path: C:\Program Files\Agilent\2100 bioanalyzer\2100 expert\assays\RNA\Eukaryote Total RNA Nano Series II.xsy  
Assay Class: Eukaryote Total RNA Nano  
Version: 2.6  
Assay Comments: Total RNA Analysis ng sensitivity (Eukaryote)  
© Copyright 2003 - 2009 Agilent Technologies, Inc.

Chip Information:

Chip Lot #:      Reagent Kit Lot #:      Chip Comments:



Assay Class: Eukaryote Total RNA Nano  
 Data Path: C:\...ents and Settings\Bioanalyzer\2012-03-27\2012-03-27\_006.xad

Created: 3/27/2012 3:19:59 PM  
 Modified: 3/27/2012 3:43:08 PM

**Electrophoresis File Run Summary (Chip Summary)**

Sample Name	Sample Comment	Status	Result Label	Result Color
MD 23		✓	RIN N/A	
MD 24 (1:2)		✓	RIN N/A	
MD 27		✓	RIN:1	
MD 29		✓	RIN N/A	
CD 33 (1:6)		✓	RIN: 6.70	
CD 34 (1:5)		✓	RIN: 6.40	
CD 35 (1:5)		✓	RIN: 6.40	
CD 36 (1:6)		✓	RIN: 6.60	
MB 25		✓	RIN N/A	
MB 26		✓	RIN: 1.90	
MB 28		✓	RIN: 5.60	
MB 30		✓	RIN: 1.20	
Ladder		✓	All Other Samples	

**Chip Lot #**

**Reagent Kit Lot #**

**Chip Comments :**

Assay Class: Eukaryote Total RNA Nano  
Data Path: C:\...ents and Settings\Bioanalyzer\2012-03-27\2012-03-27\_006.xad

Created: 3/27/2012 3:19:59 PM  
Modified: 3/27/2012 3:43:08 PM

## Electrophoresis Assay Details

### General Analysis Settings

Number of Available Sample and Ladder Wells (Max.) : 13  
Minimum Visible Range [s] : 17  
Maximum Visible Range [s] : 70  
Start Analysis Time Range [s] : 19  
End Analysis Time Range [s] : 69  
Ladder Concentration [ng/ $\mu$ l] : 150  
Lower Marker Concentration [ng/ $\mu$ l] : 0  
Upper Marker Concentration [ng/ $\mu$ l] : 0  
Used Lower Marker for Quantitation  
Standard Curve Fit is Logarithmic  
Show Data Aligned to Lower Marker

### Integrator Settings

Integration Start Time [s] : 19  
Integration End Time [s] : 69  
Slope Threshold : 0.6  
Height Threshold [FU] : 0.5  
Area Threshold : 0.2  
Width Threshold [s] : 0.5  
Baseline Plateau [s] : 6

### Filter Settings

Filter Width [s] : 0.5  
Polynomial Order : 4

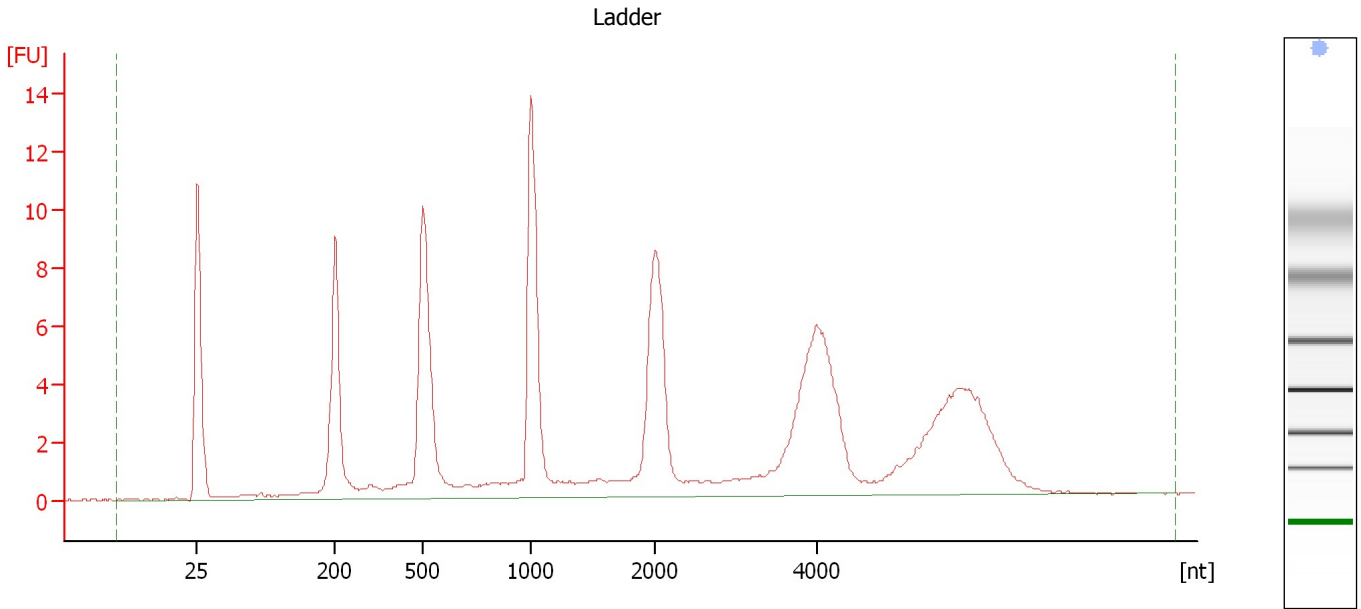
### Ladder

Ladder Peak	Size
1	25
2	200
3	500
4	1000
5	2000
6	4000

Assay Class: Eukaryote Total RNA Nano  
Data Path: C:\...ents and Settings\Bioanalyzer\2012-03-27\2012-03-27\_006.xad

Created: 3/27/2012 3:19:59 PM  
Modified: 3/27/2012 3:43:08 PM

**Electropherogram Summary**



**Overall Results for Ladder**

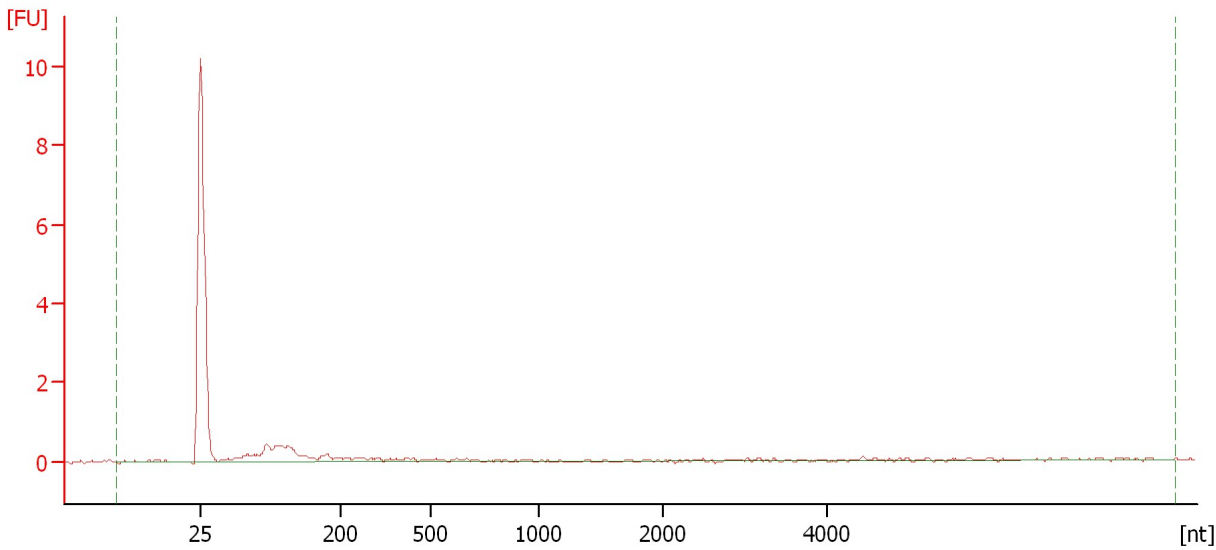
RNA Area:	136.7	Result Flagging Color:	<span style="background-color: #add8e6; border: 1px solid black; display: inline-block; width: 20px; height: 10px;"></span>
RNA Concentration:	150 ng/ $\mu$ l	Result Flagging Label:	All Other Samples

Assay Class: Eukaryote Total RNA Nano  
Data Path: C:\...ents and Settings\Bioanalyzer\2012-03-27\2012-03-27\_006.xad

Created: 3/27/2012 3:19:59 PM  
Modified: 3/27/2012 3:43:08 PM

**Electropherogram Summary Continued ...**

MD 23



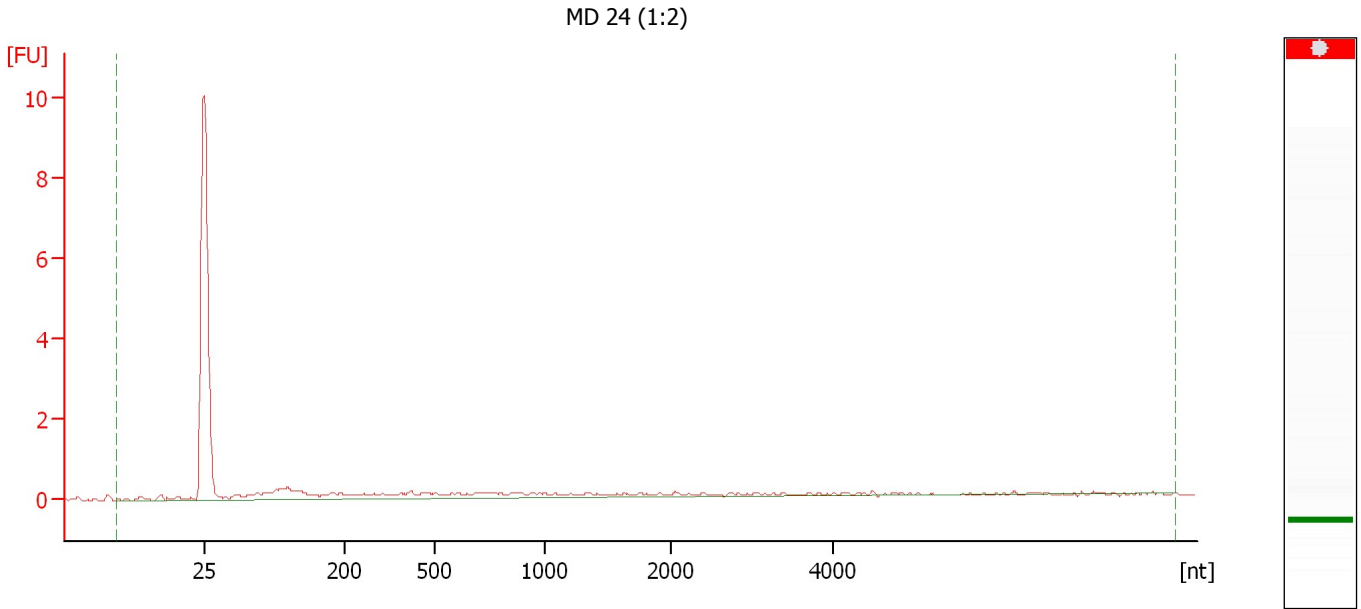
**Overall Results for sample 1 : MD 23**

RNA Area:	4.6	RNA Integrity Number (RIN):	N/A (B.02.08)
RNA Concentration:	5 ng/μl	Result Flagging Color:	<span style="background-color: #cccccc; border: 1px solid black; display: inline-block; width: 20px; height: 10px;"></span>
rRNA Ratio [28s / 18s]:	0.0	Result Flagging Label:	RIN N/A

Assay Class: Eukaryote Total RNA Nano  
Data Path: C:\...ents and Settings\Bioanalyzer\2012-03-27\2012-03-27\_006.xad

Created: 3/27/2012 3:19:59 PM  
Modified: 3/27/2012 3:43:08 PM

**Electropherogram Summary Continued ...**



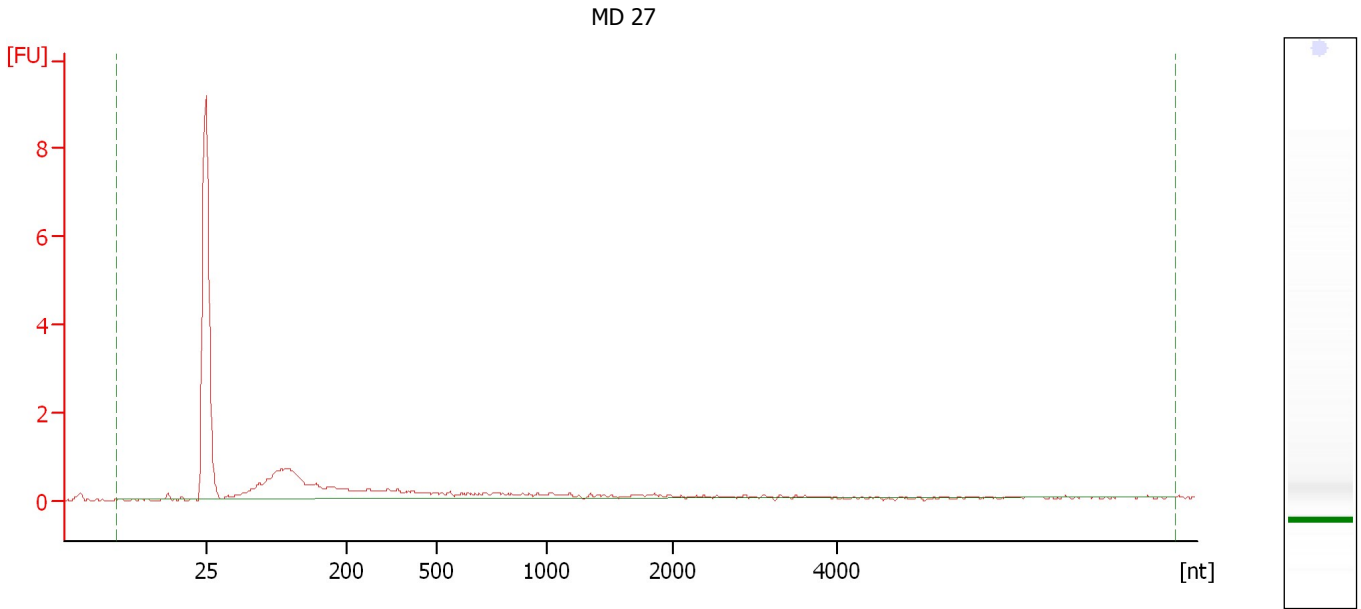
**Overall Results for sample 2 : MD 24 (1:2)**

RNA Area:	8.0	RNA Integrity Number (RIN):	N/A (B.02.08)
RNA Concentration:	9 ng/μl	Result Flagging Color:	<span style="background-color: #cccccc; border: 1px solid black; display: inline-block; width: 20px; height: 10px;"></span>
rRNA Ratio [28s / 18s]:	0.0	Result Flagging Label:	RIN N/A

Assay Class: Eukaryote Total RNA Nano  
Data Path: C:\...ents and Settings\Bioanalyzer\2012-03-27\2012-03-27\_006.xad

Created: 3/27/2012 3:19:59 PM  
Modified: 3/27/2012 3:43:08 PM

**Electropherogram Summary Continued ...**



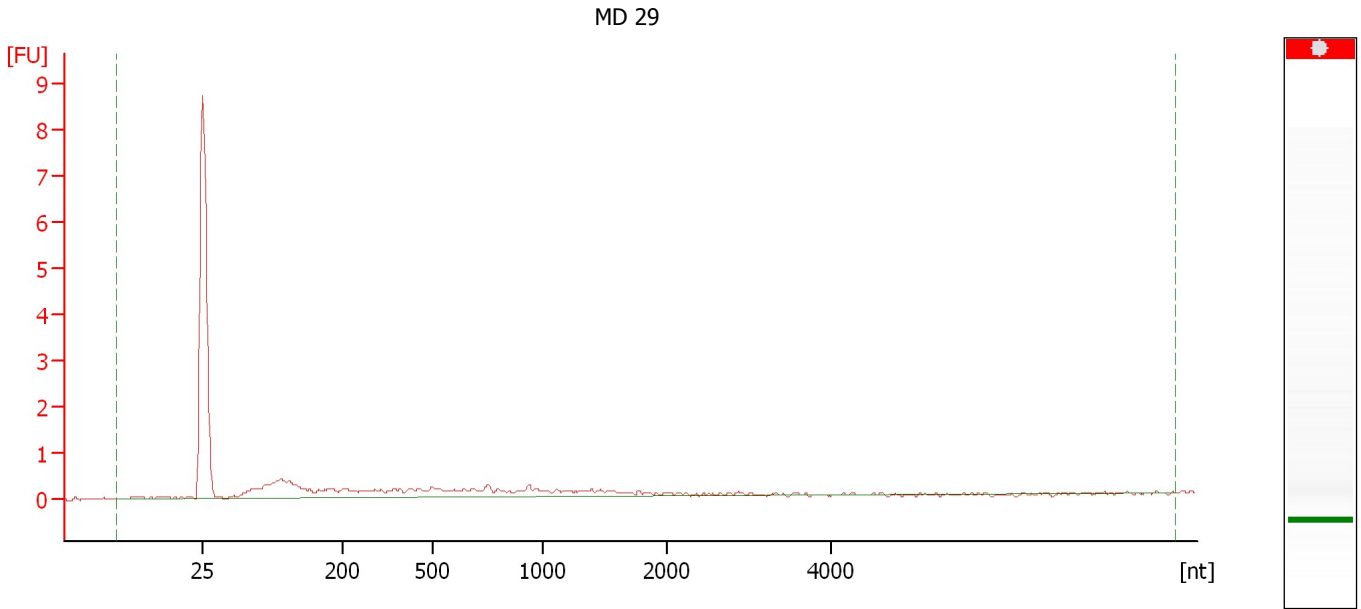
**Overall Results for sample 3 : MD 27**

RNA Area:	13.1	RNA Integrity Number (RIN):	1 (B.02.08)
RNA Concentration:	14 ng/μl	Result Flagging Color:	<span style="background-color: #ccccff; border: 1px solid black; display: inline-block; width: 20px; height: 10px;"></span>
rRNA Ratio [28s / 18s]:	0.0	Result Flagging Label:	RIN:1

Assay Class: Eukaryote Total RNA Nano  
Data Path: C:\...ents and Settings\Bioanalyzer\2012-03-27\2012-03-27\_006.xad

Created: 3/27/2012 3:19:59 PM  
Modified: 3/27/2012 3:43:08 PM

**Electropherogram Summary Continued ...**



**Overall Results for sample 4 : MD 29**

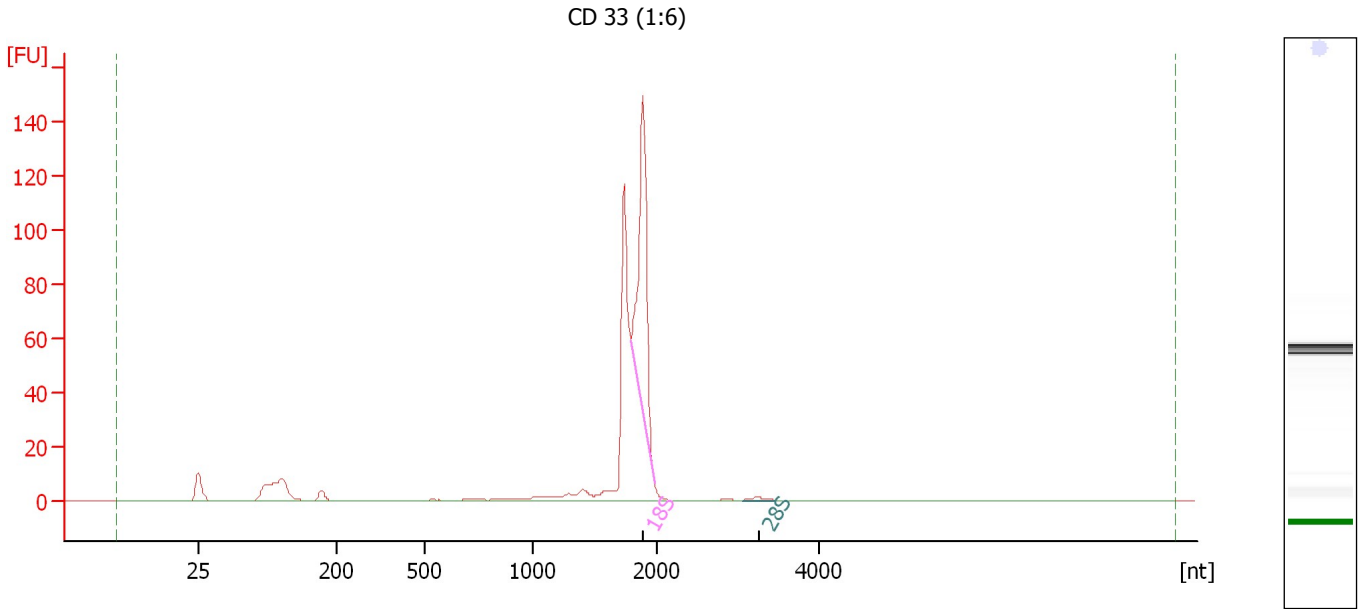
RNA Area:	9.0	RNA Integrity Number (RIN):	N/A (B.02.08)
RNA Concentration:	10 ng/μl	Result Flagging Color:	<span style="background-color: #cccccc; border: 1px solid black; display: inline-block; width: 20px; height: 10px;"></span>
rRNA Ratio [28s / 18s]:	0.0	Result Flagging Label:	RIN N/A



Assay Class: Eukaryote Total RNA Nano  
Data Path: C:\...ents and Settings\Bioanalyzer\2012-03-27\2012-03-27\_006.xad

Created: 3/27/2012 3:19:59 PM  
Modified: 3/27/2012 3:43:08 PM

**Electropherogram Summary Continued ...**



**Overall Results for sample 5 : CD 33 (1:6)**

RNA Area:	375.5	RNA Integrity Number (RIN):	6.7 (B.02.08, Anomaly Threshold(s) manually adapted)
RNA Concentration:	412 ng/μl	Result Flagging Color:	<span style="background-color: #ccccff; border: 1px solid black; display: inline-block; width: 20px; height: 10px;"></span>
rRNA Ratio [28s / 18s]:	0.0	Result Flagging Label:	RIN: 6.70

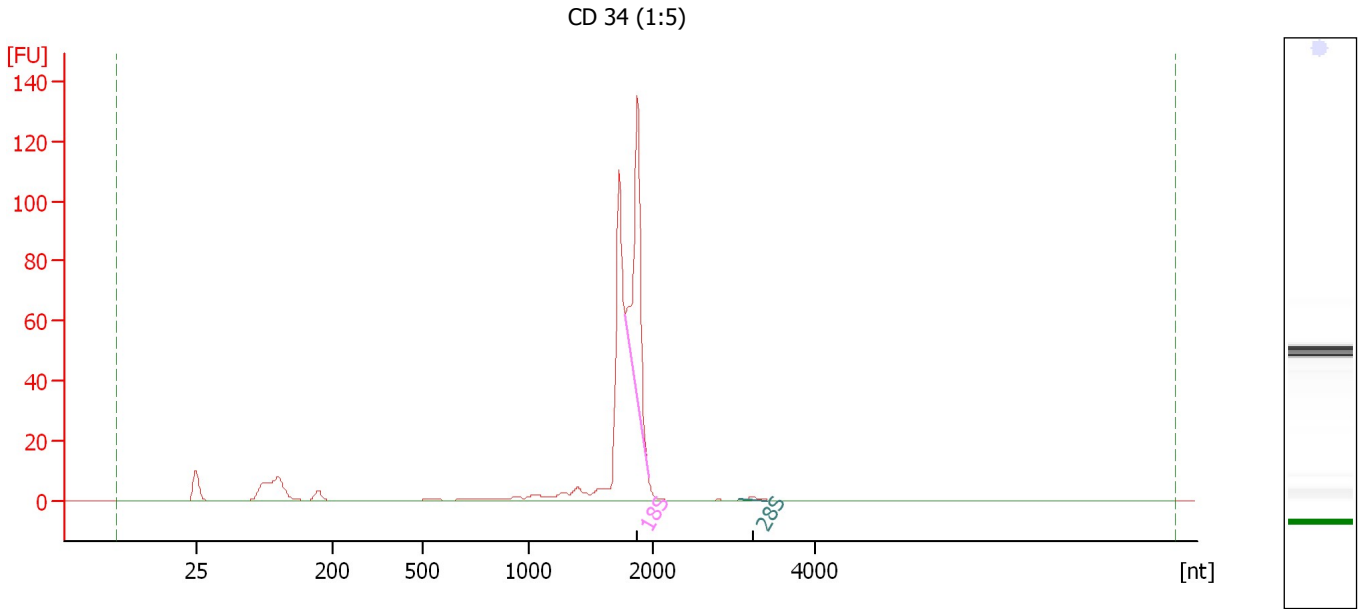
**Fragment table for sample 5 : CD 33 (1:6)**

Name	Start Size [nt]	End Size [nt]	Area	% of total Area
18S	1,785	1,974	104.7	27.9
28S	3,058	3,441	1.4	0.4

Assay Class: Eukaryote Total RNA Nano  
 Data Path: C:\...ents and Settings\Bioanalyzer\2012-03-27\2012-03-27\_006.xad

Created: 3/27/2012 3:19:59 PM  
 Modified: 3/27/2012 3:43:08 PM

**Electropherogram Summary Continued ...**



**Overall Results for sample 6 : CD 34 (1:5)**

RNA Area:	358.1	RNA Integrity Number (RIN):	6.4 (B.02.08, Anomaly Threshold(s) manually adapted)
RNA Concentration:	393 ng/μl	Result Flagging Color:	<span style="background-color: #ccccff; border: 1px solid black; display: inline-block; width: 20px; height: 10px;"></span>
rRNA Ratio [28s / 18s]:	0.0	Result Flagging Label:	RIN: 6.40

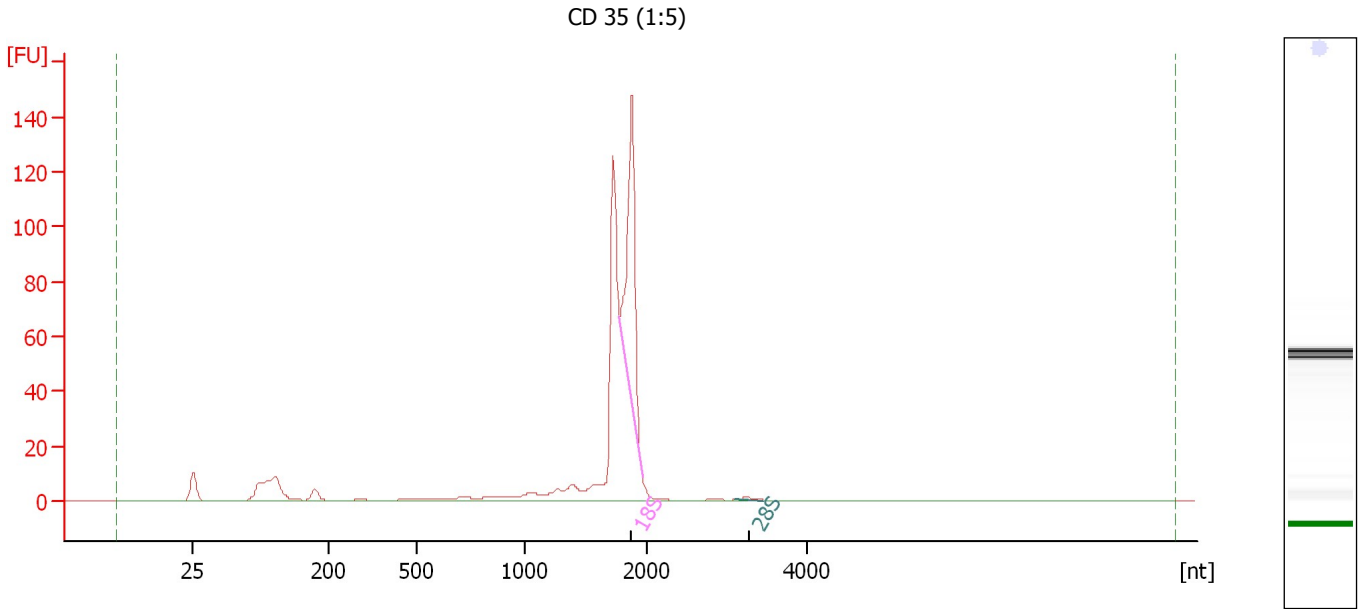
**Fragment table for sample 6 : CD 34 (1:5)**

Name	Start Size [nt]	End Size [nt]	Area	% of total Area
18S	1,774	1,956	82.3	23.0
28S	3,060	3,419	1.0	0.3

Assay Class: Eukaryote Total RNA Nano  
Data Path: C:\...ents and Settings\Bioanalyzer\2012-03-27\2012-03-27\_006.xad

Created: 3/27/2012 3:19:59 PM  
Modified: 3/27/2012 3:43:08 PM

**Electropherogram Summary Continued ...**



**Overall Results for sample 7 : CD 35 (1:5)**

RNA Area: 417.9      RNA Integrity Number (RIN): 6.4 (B.02.08, Anomaly Threshold(s) manually adapted)  
RNA Concentration: 458 ng/μl  
rRNA Ratio [28s / 18s]: 0.0  
Result Flagging Color:   
Result Flagging Label: RIN: 6.40

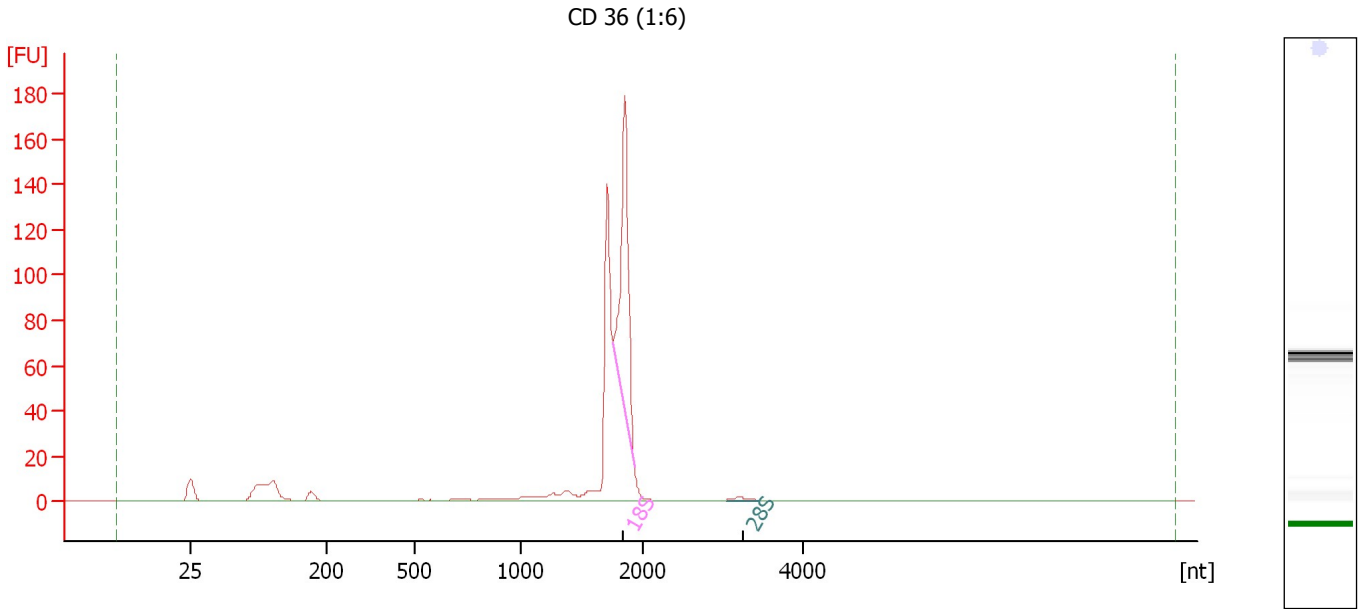
**Fragment table for sample 7 : CD 35 (1:5)**

Name	Start Size [nt]	End Size [nt]	Area	% of total Area
18S	1,771	1,962	98.2	23.5
28S	3,091	3,452	1.3	0.3

Assay Class: Eukaryote Total RNA Nano  
Data Path: C:\...ents and Settings\Bioanalyzer\2012-03-27\2012-03-27\_006.xad

Created: 3/27/2012 3:19:59 PM  
Modified: 3/27/2012 3:43:08 PM

**Electropherogram Summary Continued ...**



**Overall Results for sample 8 : CD 36 (1:6)**

RNA Area:	434.5	RNA Integrity Number (RIN):	6.6 (B.02.08, Anomaly Threshold(s) manually adapted)
RNA Concentration:	477 ng/μl	Result Flagging Color:	<span style="background-color: #ccccff; border: 1px solid black; display: inline-block; width: 20px; height: 10px;"></span>
rRNA Ratio [28s / 18s]:	0.0	Result Flagging Label:	RIN: 6.60

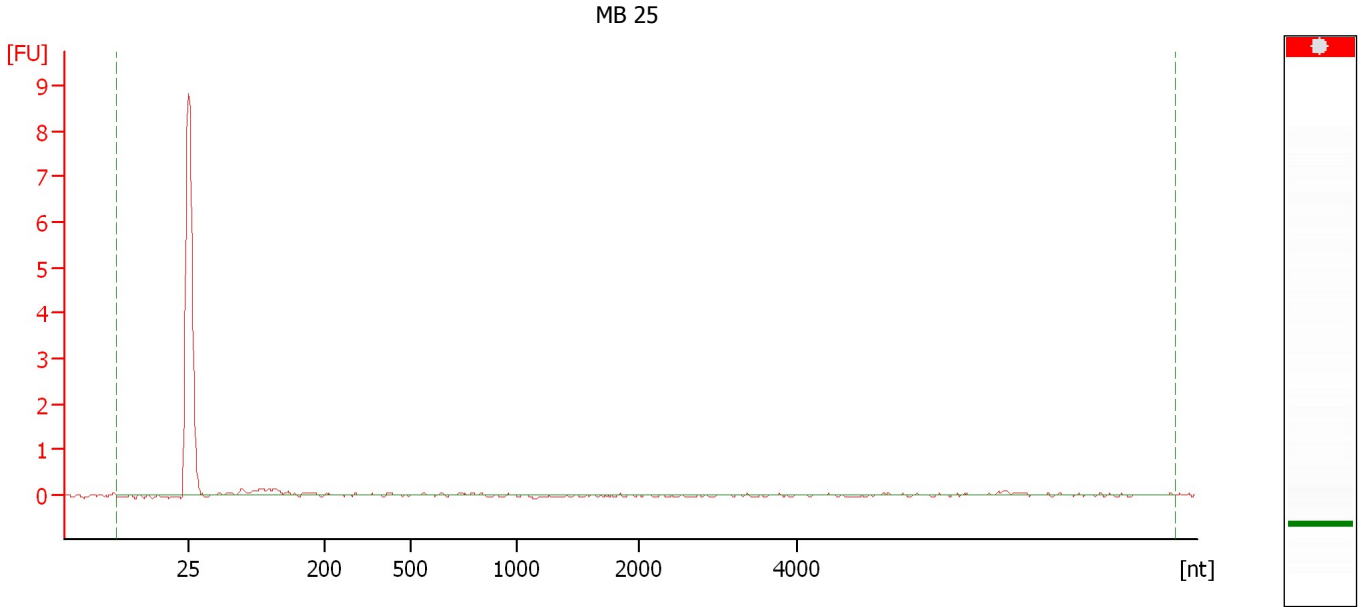
**Fragment table for sample 8 : CD 36 (1:6)**

Name	Start Size [nt]	End Size [nt]	Area	% of total Area
18S	1,760	1,926	120.1	27.6
28S	3,040	3,456	1.6	0.4

Assay Class: Eukaryote Total RNA Nano  
Data Path: C:\...ents and Settings\Bioanalyzer\2012-03-27\2012-03-27\_006.xad

Created: 3/27/2012 3:19:59 PM  
Modified: 3/27/2012 3:43:08 PM

**Electropherogram Summary Continued ...**



**Overall Results for sample 9 : MB 25**

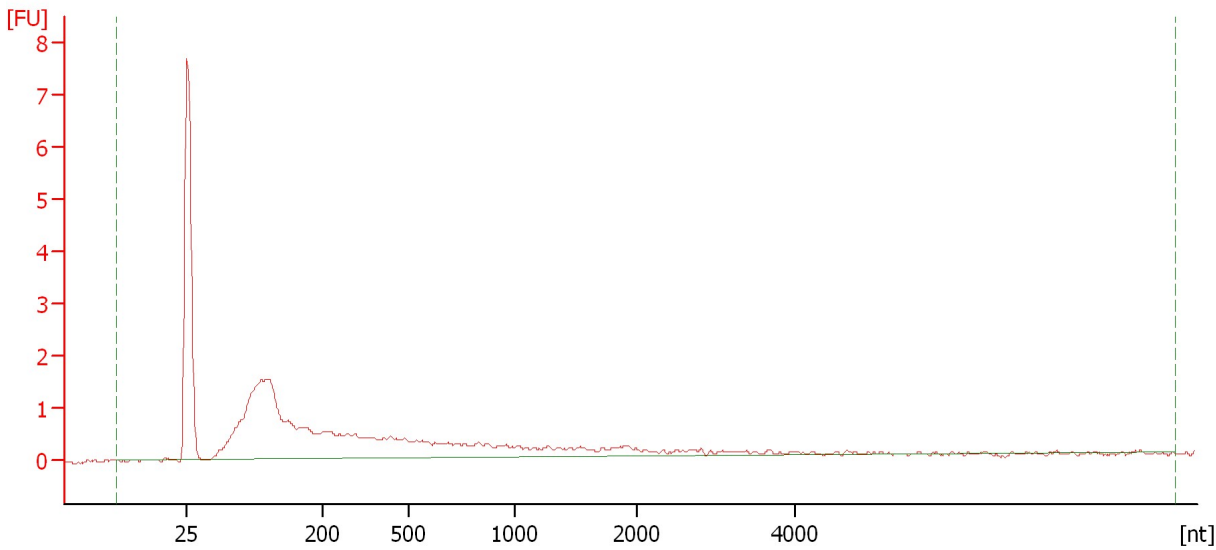
RNA Area:	2.0	RNA Integrity Number (RIN):	N/A (B.02.08)
RNA Concentration:	2 ng/ $\mu$ l	Result Flagging Color:	<span style="background-color: #cccccc; border: 1px solid black; display: inline-block; width: 20px; height: 10px;"></span>
rRNA Ratio [28s / 18s]:	0.0	Result Flagging Label:	RIN N/A

Assay Class: Eukaryote Total RNA Nano  
Data Path: C:\...ents and Settings\Bioanalyzer\2012-03-27\2012-03-27\_006.xad

Created: 3/27/2012 3:19:59 PM  
Modified: 3/27/2012 3:43:08 PM

**Electropherogram Summary Continued ...**

MB 26



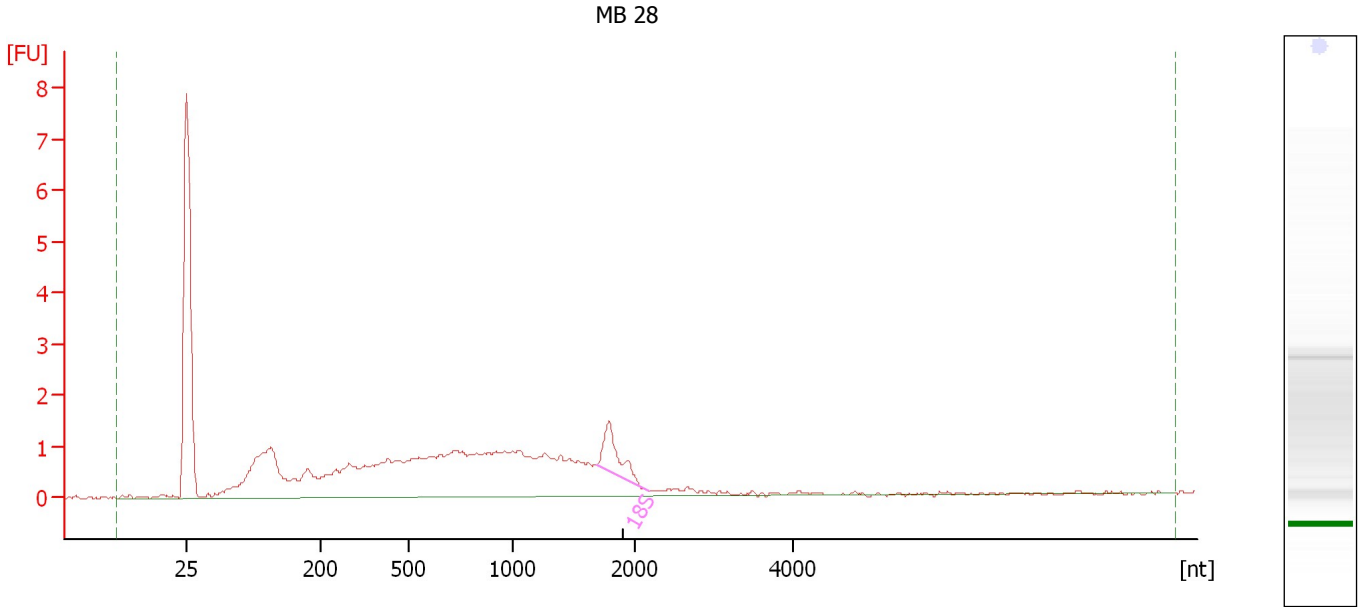
**Overall Results for sample 10 : MB 26**

RNA Area:	26.9	RNA Integrity Number (RIN):	1.9 (B.02.08)
RNA Concentration:	30 ng/μl	Result Flagging Color:	<span style="background-color: #ccccff; border: 1px solid black; display: inline-block; width: 20px; height: 10px;"></span>
rRNA Ratio [28s / 18s]:	0.0	Result Flagging Label:	RIN: 1.90

Assay Class: Eukaryote Total RNA Nano  
Data Path: C:\...ents and Settings\Bioanalyzer\2012-03-27\2012-03-27\_006.xad

Created: 3/27/2012 3:19:59 PM  
Modified: 3/27/2012 3:43:08 PM

**Electropherogram Summary Continued ...**



**Overall Results for sample 11 : MB 28**

RNA Area:	40.3	RNA Integrity Number (RIN):	5.6 (B.02.08)
RNA Concentration:	44 ng/μl	Result Flagging Color:	<span style="background-color: #ccccff; border: 1px solid black; display: inline-block; width: 20px; height: 10px;"></span>
rRNA Ratio [28s / 18s]:	0.0	Result Flagging Label:	RIN: 5.60

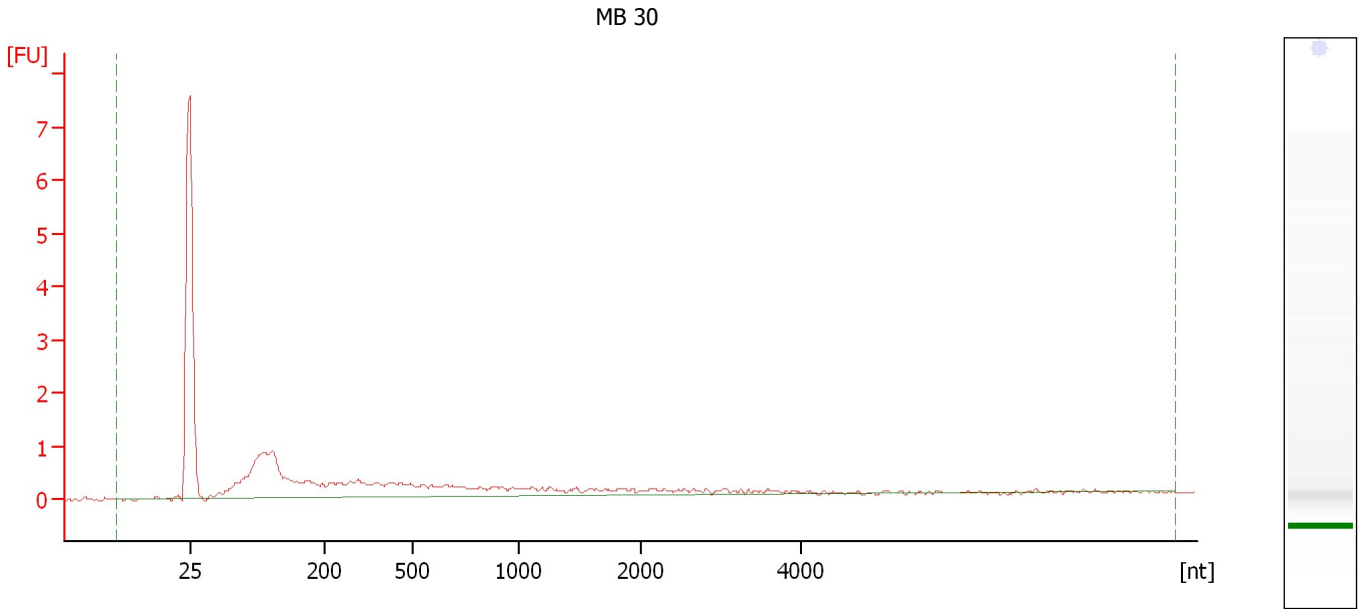
**Fragment table for sample 11 : MB 28**

Name	Start Size [nt]	End Size [nt]	Area	% of total Area
18S	1,684	2,165	1.9	4.7

Assay Class: Eukaryote Total RNA Nano  
Data Path: C:\...ents and Settings\Bioanalyzer\2012-03-27\2012-03-27\_006.xad

Created: 3/27/2012 3:19:59 PM  
Modified: 3/27/2012 3:43:08 PM

**Electropherogram Summary Continued ...**



**Overall Results for sample 12 : MB 30**

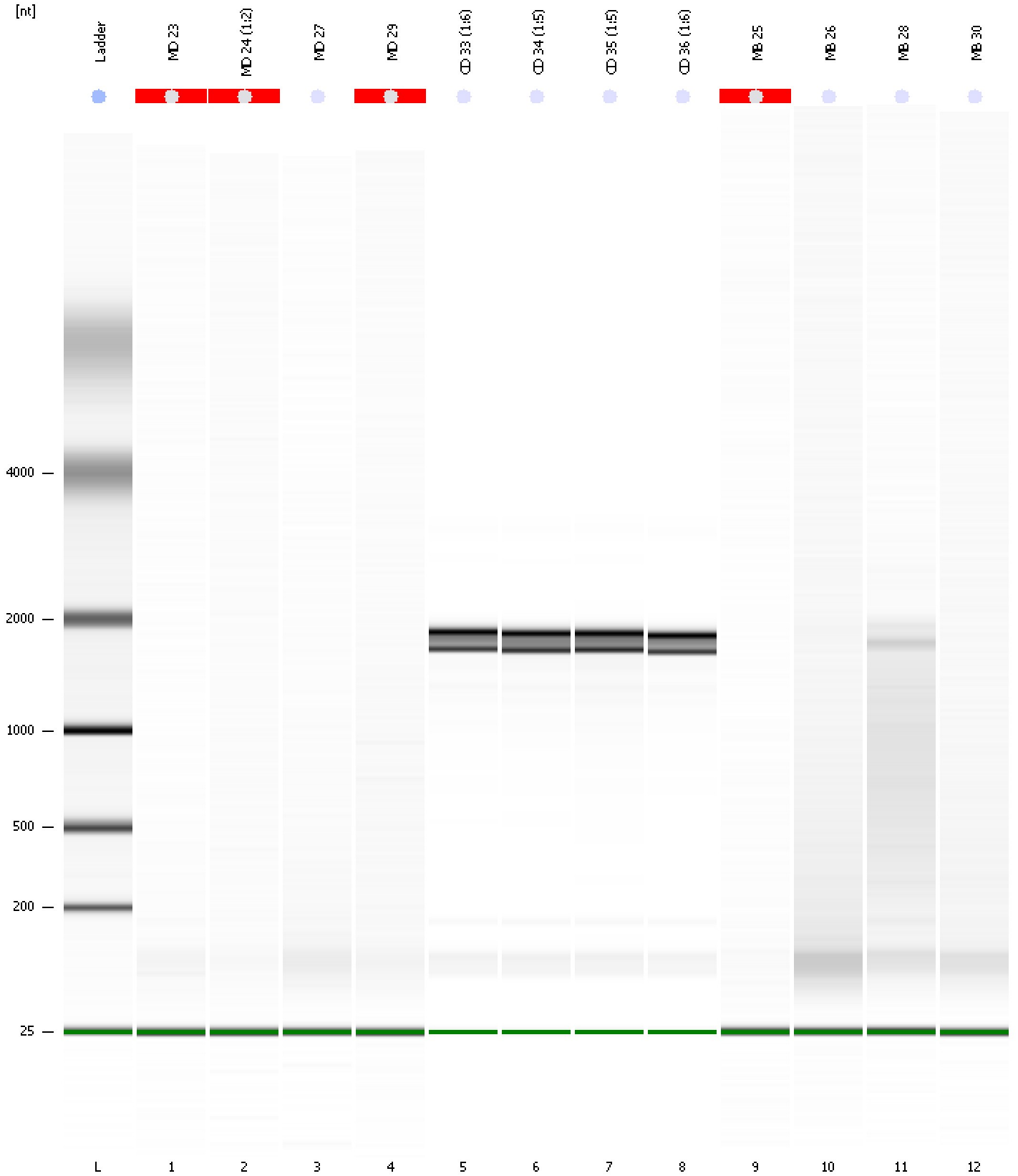
RNA Area:	17.2	RNA Integrity Number (RIN):	1.2 (B.02.08)
RNA Concentration:	19 ng/μl	Result Flagging Color:	<span style="background-color: #ccccff; border: 1px solid black; display: inline-block; width: 20px; height: 10px;"></span>
rRNA Ratio [28s / 18s]:	0.0	Result Flagging Label:	RIN: 1.20



Assay Class: Eukaryote Total RNA Nano  
Data Path: C:\...ents and Settings\Bioanalyzer\2012-03-27\2012-03-27\_006.xad

Created: 3/27/2012 3:19:59 PM  
Modified: 3/27/2012 3:43:08 PM

**Gel Image**



Assay Class: Eukaryote Total RNA Nano  
 Data Path: C:\...ents and Settings\Bioanalyzer\2012-03-27\2012-03-27\_006.xad

Created: 3/27/2012 3:19:59 PM  
 Modified: 3/27/2012 3:43:08 PM

**Run Logbook**

Description	Number	Source	Category	Sub Category	Time	Time Zone	User	Host
Run ended on port 1 (Number of wells acquired: 13)		Instrument	Run		3/27/2012 3:43:03 PM	(GMT --07:00) Pacific Standard Time	UC Davis	D8XSMGH1
Run started on port 1 (File: C:\Documents and Settings\Bioanalyzer\2012-03-27\2012-03-27_006.xad)		Instrument	Run		3/27/2012 3:20:05 PM	(GMT --07:00) Pacific Standard Time	UC Davis	D8XSMGH1
Product Number : G2938B		Instrument	Run		3/27/2012 3:20:05 PM	(GMT --07:00) Pacific Standard Time	UC Davis	D8XSMGH1
Name :		Instrument	Run		3/27/2012 3:20:05 PM	(GMT --07:00) Pacific Standard Time	UC Davis	D8XSMGH1
Vendor : Agilent Technologies		Instrument	Run		3/27/2012 3:20:05 PM	(GMT --07:00) Pacific Standard Time	UC Davis	D8XSMGH1
Serial# : DE13701086		Instrument	Run		3/27/2012 3:20:05 PM	(GMT --07:00) Pacific Standard Time	UC Davis	D8XSMGH1
Firmware : C.01.069		Instrument	Run		3/27/2012 3:20:05 PM	(GMT --07:00) Pacific Standard Time	UC Davis	D8XSMGH1
Cartridge : Electrode		Instrument	Run		3/27/2012 3:20:05 PM	(GMT --07:00) Pacific Standard Time	UC Davis	D8XSMGH1