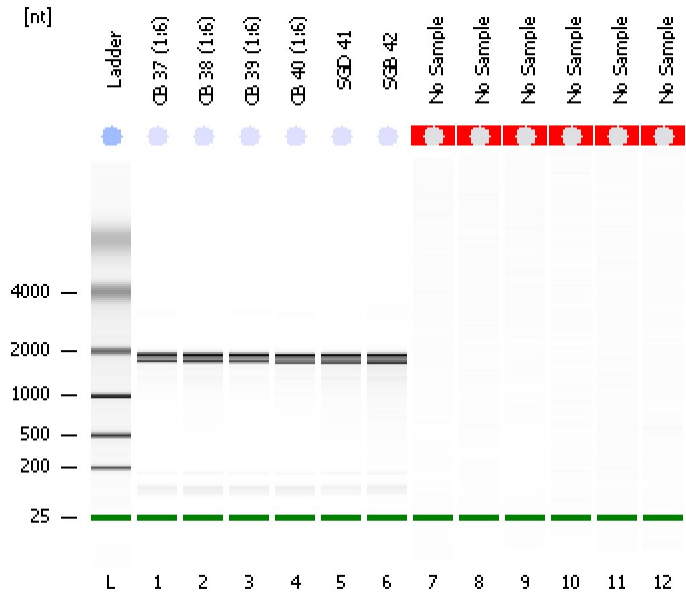


Assay Class: Eukaryote Total RNA Nano
Data Path: C:\...ents and Settings\Bioanalyzer\2012-03-27\2012-03-27_007.xad

Created: 3/27/2012 4:14:58 PM
Modified: 3/27/2012 4:38:06 PM

Electrophoresis File Run Summary



Instrument Information:

Instrument Name: DE13701086 Firmware: C.01.069
Serial#: DE13701086 Type: G2938B

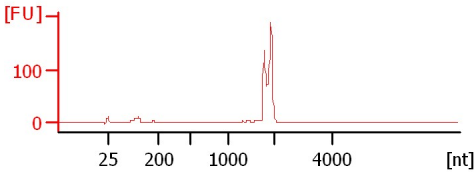
Assay Information:

Assay Origin Path: C:\Program Files\Agilent\2100 bioanalyzer\2100 expert\assays\RNA\Eukaryote Total RNA Nano Series II.xsy
Assay Class: Eukaryote Total RNA Nano
Version: 2.6
Assay Comments: Total RNA Analysis ng sensitivity (Eukaryote)
© Copyright 2003 - 2009 Agilent Technologies, Inc.

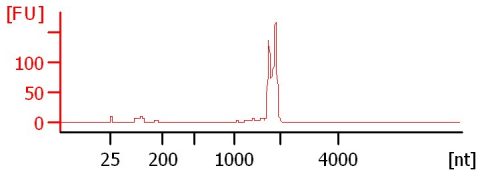
Chip Information:

Chip Lot #:
Reagent Kit Lot #:
Chip Comments:

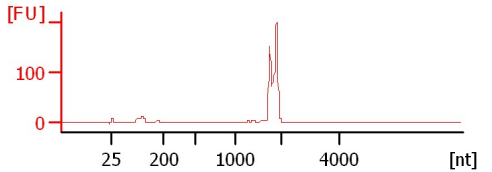
CB 37 (1:6)
RIN: 6.60



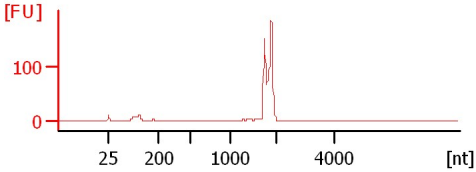
CB 38 (1:6)
RIN: 6.40



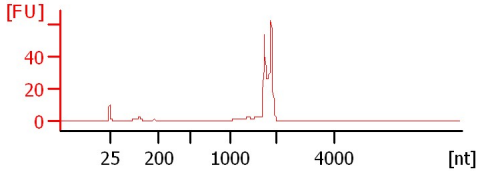
CB 39 (1:6)
RIN: 6.60



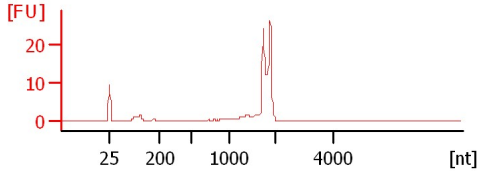
CB 40 (1:6)
RIN: 6.60



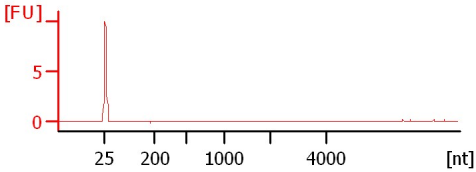
SGD 41
RIN: 6.30



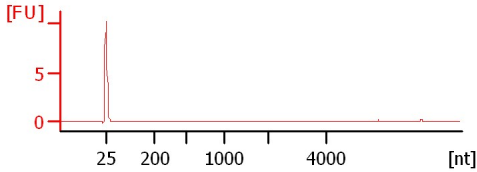
SGB 42
RIN: 5.50



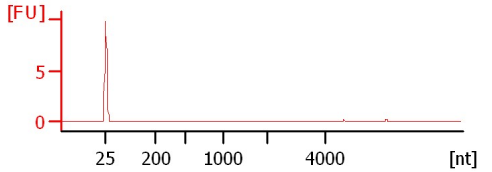
No Sample
RIN N/A



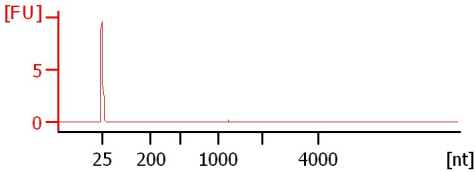
No Sample
RIN N/A



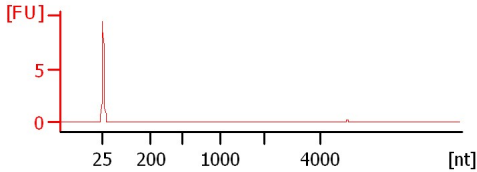
No Sample
RIN N/A



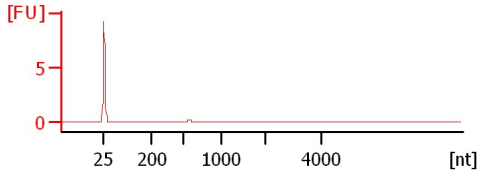
No Sample
RIN N/A



No Sample
RIN N/A



No Sample
RIN N/A



Assay Class: Eukaryote Total RNA Nano
 Data Path: C:\...ents and Settings\Bioanalyzer\2012-03-27\2012-03-27_007.xad

Created: 3/27/2012 4:14:58 PM
 Modified: 3/27/2012 4:38:06 PM

Electrophoresis File Run Summary (Chip Summary)

Sample Name	Sample Comment	Status	Result Label	Result Color
CB 37 (1:6)		✓	RIN: 6.60	
CB 38 (1:6)		✓	RIN: 6.40	
CB 39 (1:6)		✓	RIN: 6.60	
CB 40 (1:6)		✓	RIN: 6.60	
SGD 41		✓	RIN: 6.30	
SGB 42		✓	RIN: 5.50	
No Sample		✓	RIN N/A	
No Sample		✓	RIN N/A	
No Sample		✓	RIN N/A	
No Sample		✓	RIN N/A	
No Sample		✓	RIN N/A	
No Sample		✓	RIN N/A	
Ladder		✓	All Other Samples	

Chip Lot #

Reagent Kit Lot #

Chip Comments :

Assay Class: Eukaryote Total RNA Nano
Data Path: C:\...ents and Settings\Bioanalyzer\2012-03-27\2012-03-27_007.xad

Created: 3/27/2012 4:14:58 PM
Modified: 3/27/2012 4:38:06 PM

Electrophoresis Assay Details

General Analysis Settings

Number of Available Sample and Ladder Wells (Max.) : 13
Minimum Visible Range [s] : 17
Maximum Visible Range [s] : 70
Start Analysis Time Range [s] : 19
End Analysis Time Range [s] : 69
Ladder Concentration [ng/μl] : 150
Lower Marker Concentration [ng/μl] : 0
Upper Marker Concentration [ng/μl] : 0
Used Lower Marker for Quantitation
Standard Curve Fit is Logarithmic
Show Data Aligned to Lower Marker

Integrator Settings

Integration Start Time [s] : 19
Integration End Time [s] : 69
Slope Threshold : 0.6
Height Threshold [FU] : 0.5
Area Threshold : 0.2
Width Threshold [s] : 0.5
Baseline Plateau [s] : 6

Filter Settings

Filter Width [s] : 0.5
Polynomial Order : 4

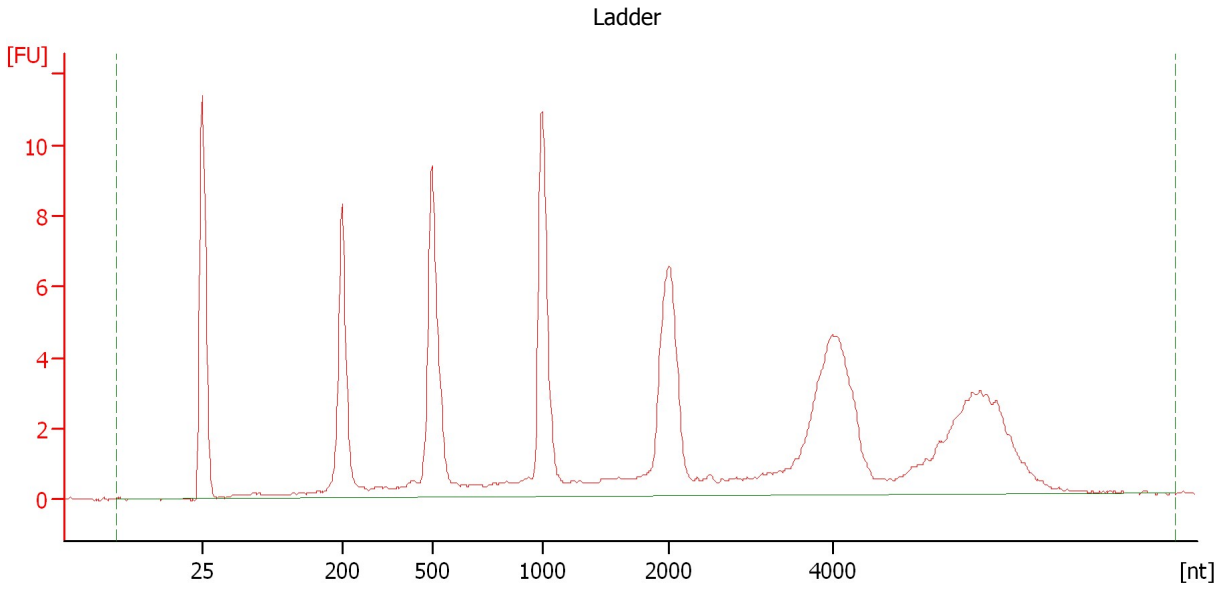
Ladder

Ladder Peak	Size
1	25
2	200
3	500
4	1000
5	2000
6	4000

Assay Class: Eukaryote Total RNA Nano
Data Path: C:\...ents and Settings\Bioanalyzer\2012-03-27\2012-03-27_007.xad

Created: 3/27/2012 4:14:58 PM
Modified: 3/27/2012 4:38:06 PM

Electropherogram Summary



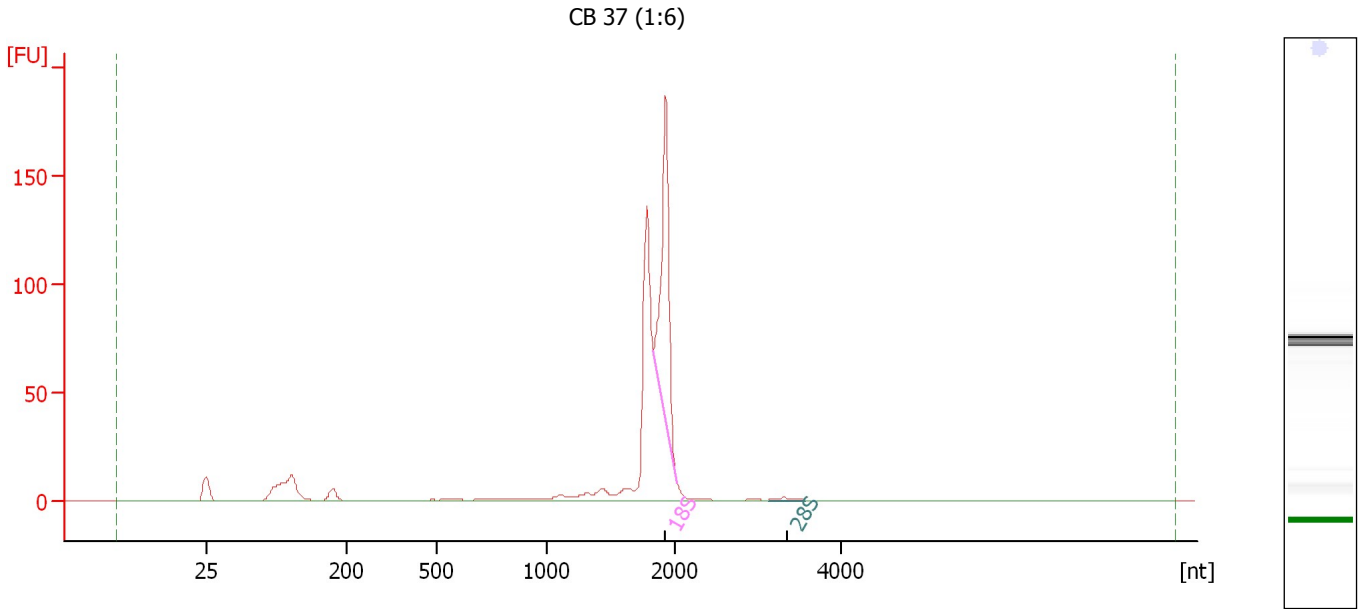
Overall Results for Ladder

RNA Area:	110.5	Result Flagging Color:	
RNA Concentration:	150 ng/ μ l	Result Flagging Label:	All Other Samples

Assay Class: Eukaryote Total RNA Nano
Data Path: C:\...ents and Settings\Bioanalyzer\2012-03-27\2012-03-27_007.xad

Created: 3/27/2012 4:14:58 PM
Modified: 3/27/2012 4:38:06 PM

Electropherogram Summary Continued ...



Overall Results for sample 1 : CB 37 (1:6)

RNA Area: 472.4 RNA Integrity Number (RIN): 6.6 (B.02.08,
RNA Concentration: 641 ng/μl Anomaly Threshold(s)
rRNA Ratio [28s / 18s]: 0.0 manually adapted)

Result Flagging Color:
Result Flagging Label: RIN: 6.60

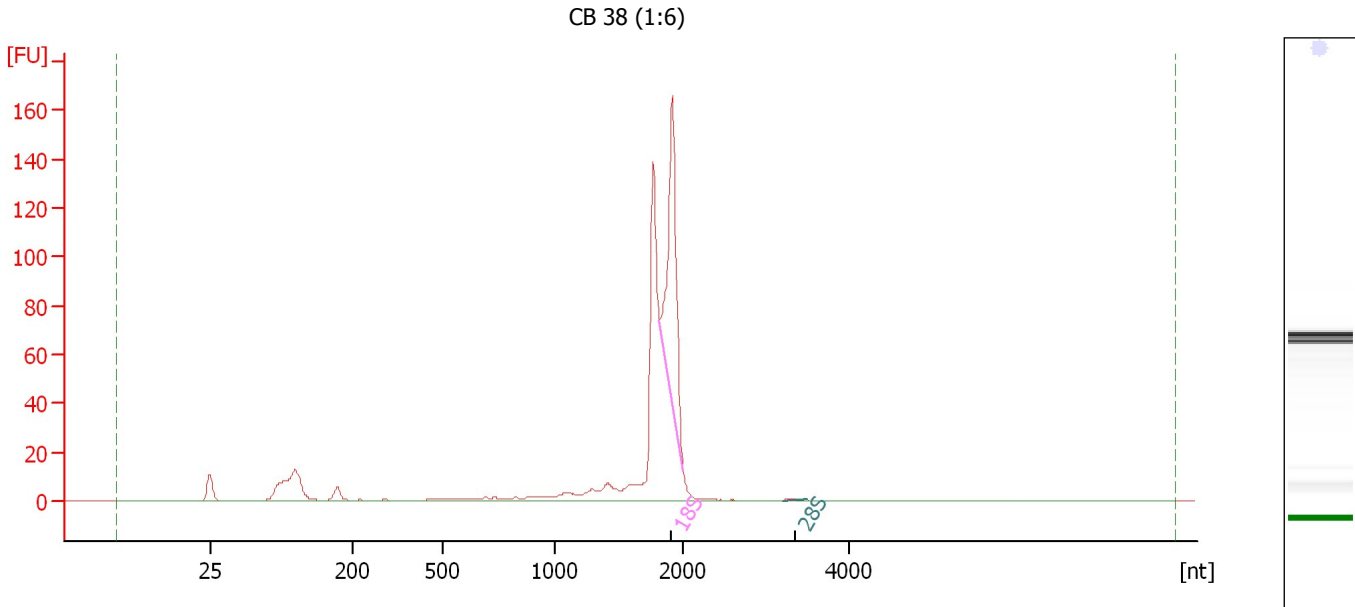
Fragment table for sample 1 : CB 37 (1:6)

Name	Start Size [nt]	End Size [nt]	Area	% of total Area
18S	1,826	2,015	128.1	27.1
28S	3,132	3,561	1.5	0.3

Assay Class: Eukaryote Total RNA Nano
 Data Path: C:\...ents and Settings\Bioanalyzer\2012-03-27\2012-03-27_007.xad

Created: 3/27/2012 4:14:58 PM
 Modified: 3/27/2012 4:38:06 PM

Electropherogram Summary Continued ...



Overall Results for sample 2 : CB 38 (1:6)

RNA Area:	483.4	RNA Integrity Number (RIN):	6.4 (B.02.08, Anomaly Threshold(s) manually adapted)
RNA Concentration:	656 ng/μl	Result Flagging Color:	
rRNA Ratio [28s / 18s]:	0.0	Result Flagging Label:	RIN: 6.40

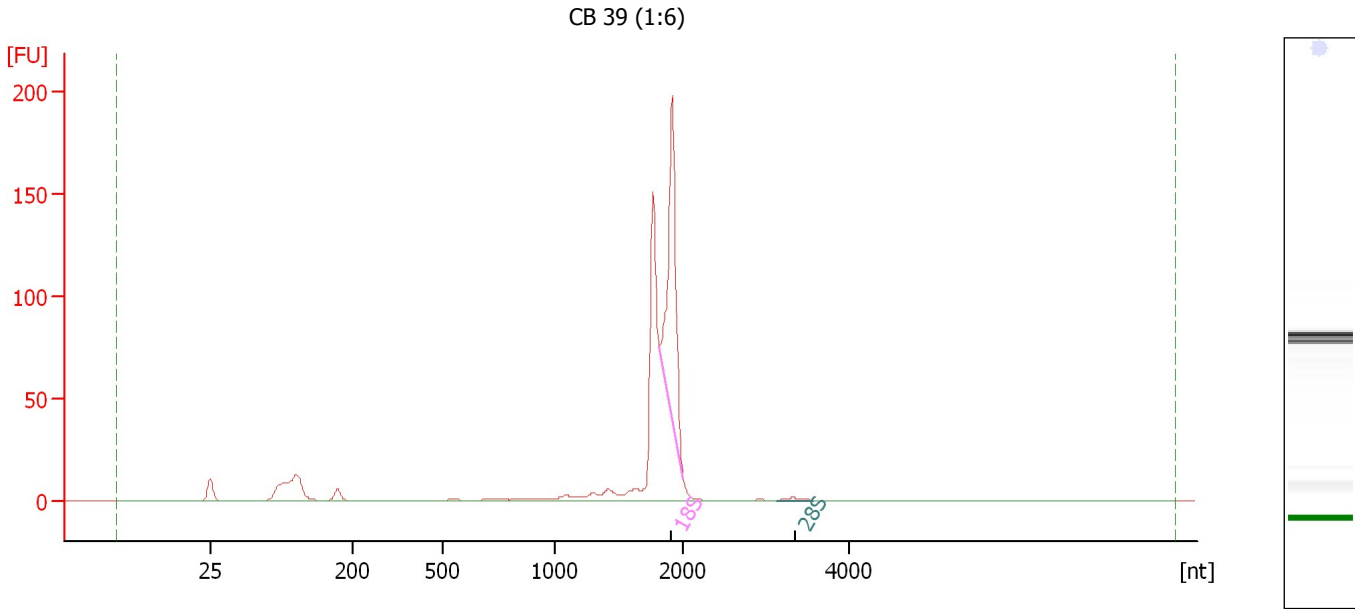
Fragment table for sample 2 : CB 38 (1:6)

Name	Start Size [nt]	End Size [nt]	Area	% of total Area
18S	1,813	1,995	114.5	23.7
28S	3,191	3,474	0.7	0.2

Assay Class: Eukaryote Total RNA Nano
 Data Path: C:\...ents and Settings\Bioanalyzer\2012-03-27\2012-03-27_007.xad

Created: 3/27/2012 4:14:58 PM
 Modified: 3/27/2012 4:38:06 PM

Electropherogram Summary Continued ...



Overall Results for sample 3 : CB 39 (1:6)

RNA Area:	504.3	RNA Integrity Number (RIN):	6.6 (B.02.08, Anomaly Threshold(s) manually adapted)
RNA Concentration:	685 ng/μl	Result Flagging Color:	
rRNA Ratio [28s / 18s]:	0.0	Result Flagging Label:	RIN: 6.60

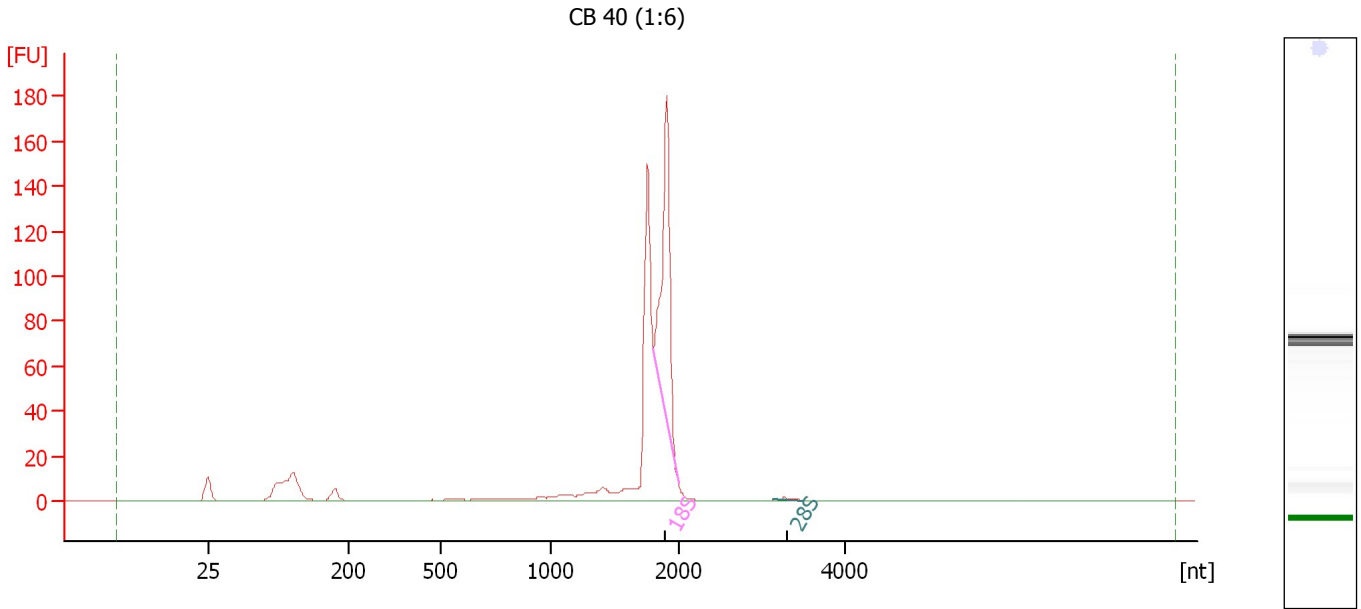
Fragment table for sample 3 : CB 39 (1:6)

Name	Start Size [nt]	End Size [nt]	Area	% of total Area
18S	1,813	1,995	136.8	27.1
28S	3,114	3,564	1.8	0.3

Assay Class: Eukaryote Total RNA Nano
 Data Path: C:\...ents and Settings\Bioanalyzer\2012-03-27\2012-03-27_007.xad

Created: 3/27/2012 4:14:58 PM
 Modified: 3/27/2012 4:38:06 PM

Electropherogram Summary Continued ...



Overall Results for sample 4 : CB 40 (1:6)

RNA Area:	472.6	RNA Integrity Number (RIN):	6.6 (B.02.08, Anomaly Threshold(s) manually adapted)
RNA Concentration:	642 ng/μl	Result Flagging Color:	
rRNA Ratio [28s / 18s]:	0.0	Result Flagging Label:	RIN: 6.60

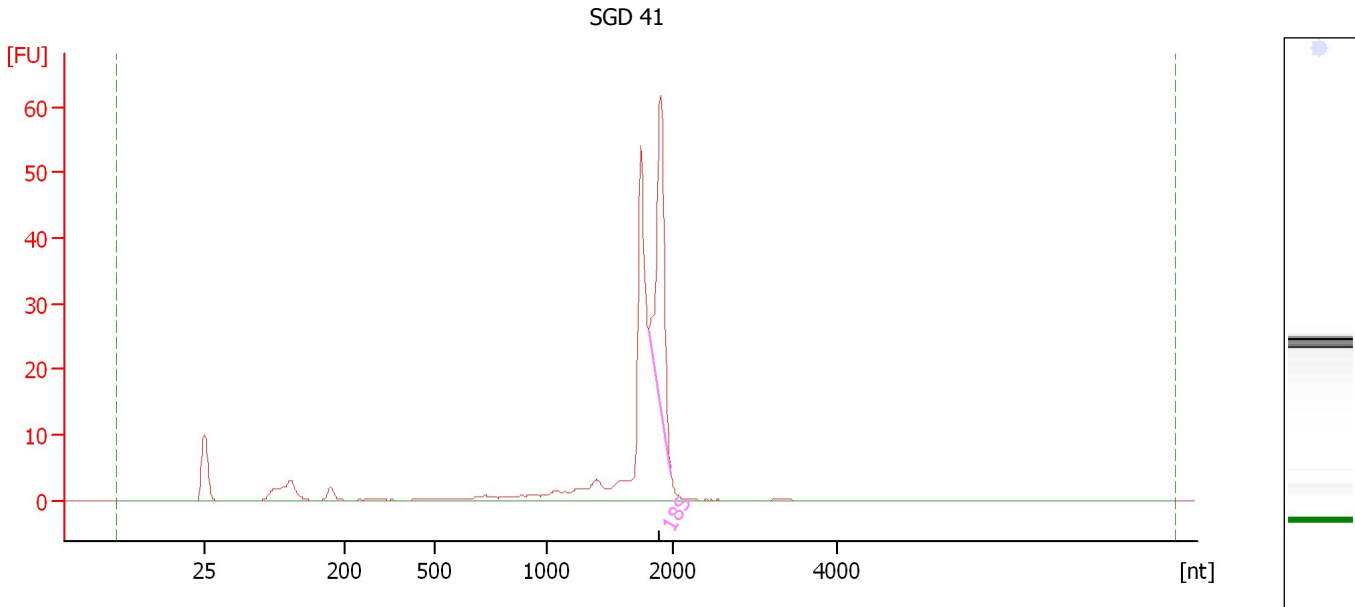
Fragment table for sample 4 : CB 40 (1:6)

Name	Start Size [nt]	End Size [nt]	Area	% of total Area
18S	1,795	1,986	131.0	27.7
28S	3,129	3,491	1.1	0.2

Assay Class: Eukaryote Total RNA Nano
Data Path: C:\...ents and Settings\Bioanalyzer\2012-03-27\2012-03-27_007.xad

Created: 3/27/2012 4:14:58 PM
Modified: 3/27/2012 4:38:06 PM

Electropherogram Summary Continued ...



Overall Results for sample 5 : SGD 41

RNA Area:	175.1	RNA Integrity Number (RIN):	6.3 (B.02.08, Anomaly Threshold(s) manually adapted)
RNA Concentration:	238 ng/μl	Result Flagging Color:	
rRNA Ratio [28s / 18s]:	0.0	Result Flagging Label:	RIN: 6.30

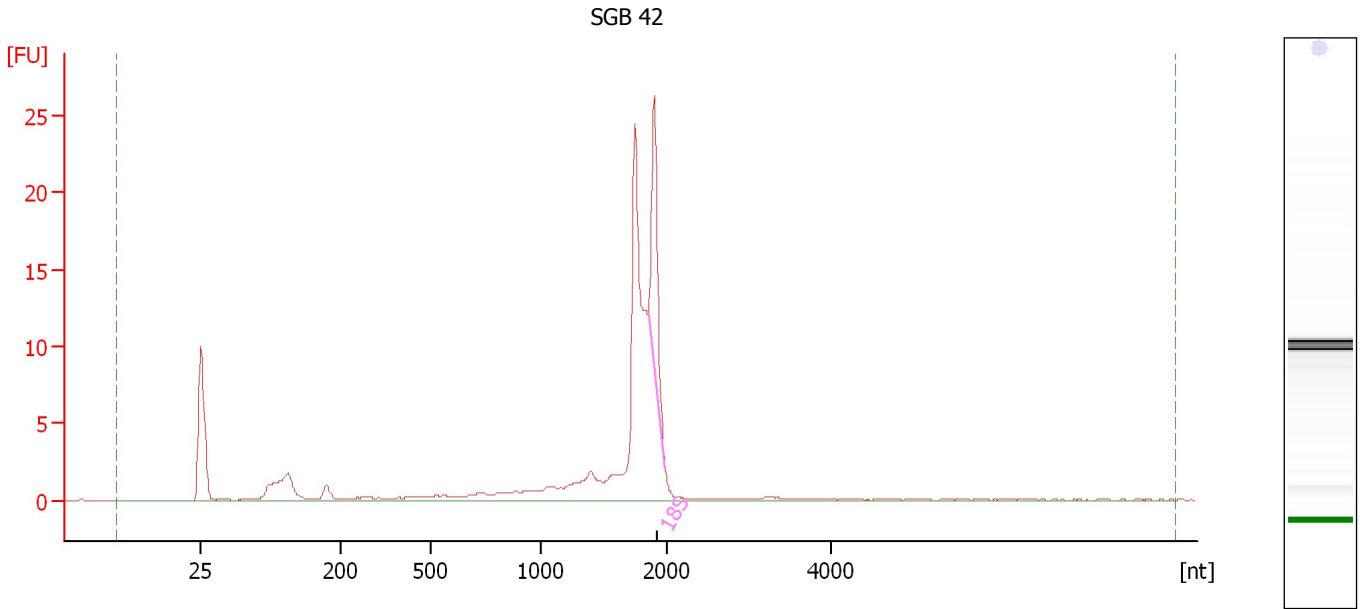
Fragment table for sample 5 : SGD 41

Name	Start Size [nt]	End Size [nt]	Area	% of total Area
18S	1,800	1,984	40.7	23.2

Assay Class: Eukaryote Total RNA Nano
Data Path: C:\...ents and Settings\Bioanalyzer\2012-03-27\2012-03-27_007.xad

Created: 3/27/2012 4:14:58 PM
Modified: 3/27/2012 4:38:06 PM

Electropherogram Summary Continued ...



Overall Results for sample 6 : SGB 42

RNA Area: 89.7 RNA Integrity Number (RIN): 5.5 (B.02.08,
RNA Concentration: 122 ng/μl Anomaly Threshold(s)
rRNA Ratio [28s / 18s]: 0.0 manually adapted)
Result Flagging Color:
Result Flagging Label: RIN: 5.50

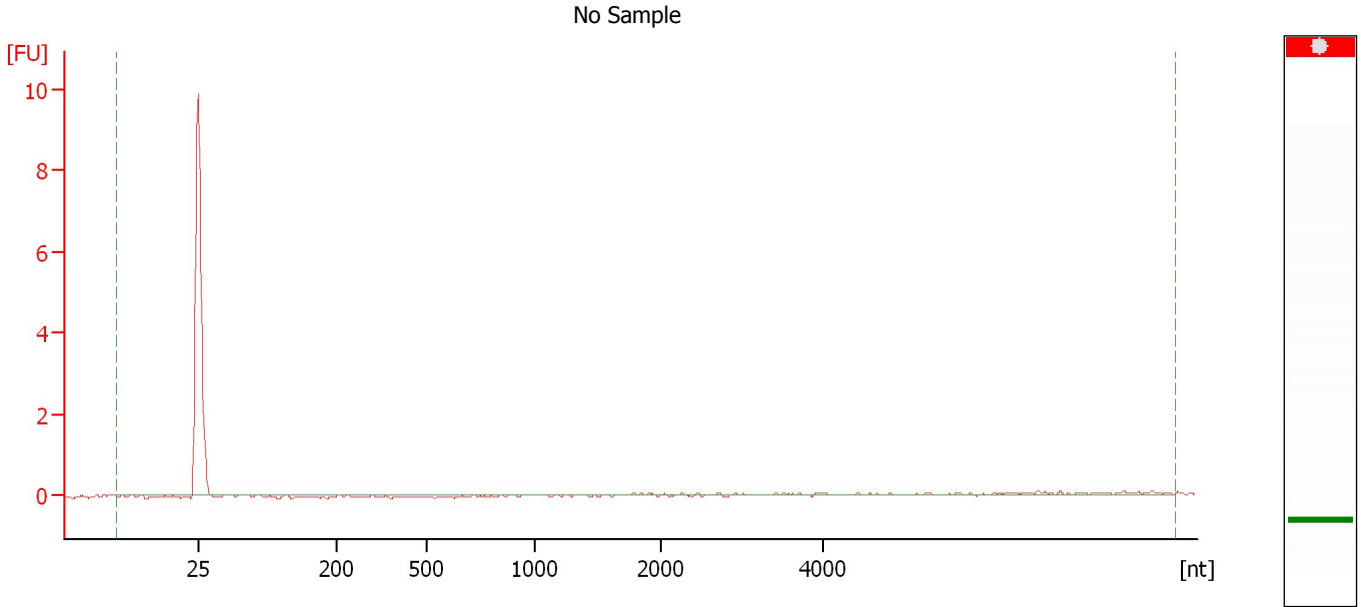
Fragment table for sample 6 : SGB 42

Name	Start Size [nt]	End Size [nt]	Area	% of total Area
18S	1,847	1,982	12.9	14.4

Assay Class: Eukaryote Total RNA Nano
Data Path: C:\...ents and Settings\Bioanalyzer\2012-03-27\2012-03-27_007.xad

Created: 3/27/2012 4:14:58 PM
Modified: 3/27/2012 4:38:06 PM

Electropherogram Summary Continued ...



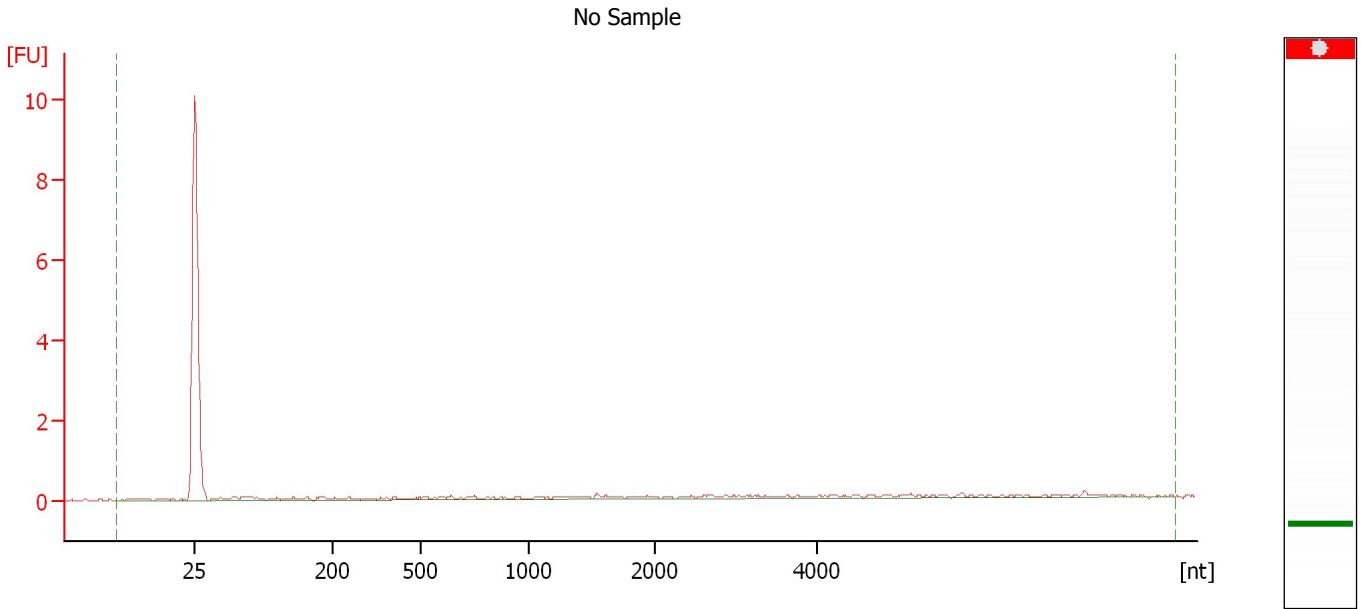
Overall Results for sample 7 : No Sample

RNA Area:	1.2	RNA Integrity Number (RIN):	N/A (B.02.08)
RNA Concentration:	2 ng/ μ l	Result Flagging Color:	
rRNA Ratio [28s / 18s]:	0.0	Result Flagging Label:	RIN N/A

Assay Class: Eukaryote Total RNA Nano
Data Path: C:\...ents and Settings\Bioanalyzer\2012-03-27\2012-03-27_007.xad

Created: 3/27/2012 4:14:58 PM
Modified: 3/27/2012 4:38:06 PM

Electropherogram Summary Continued ...



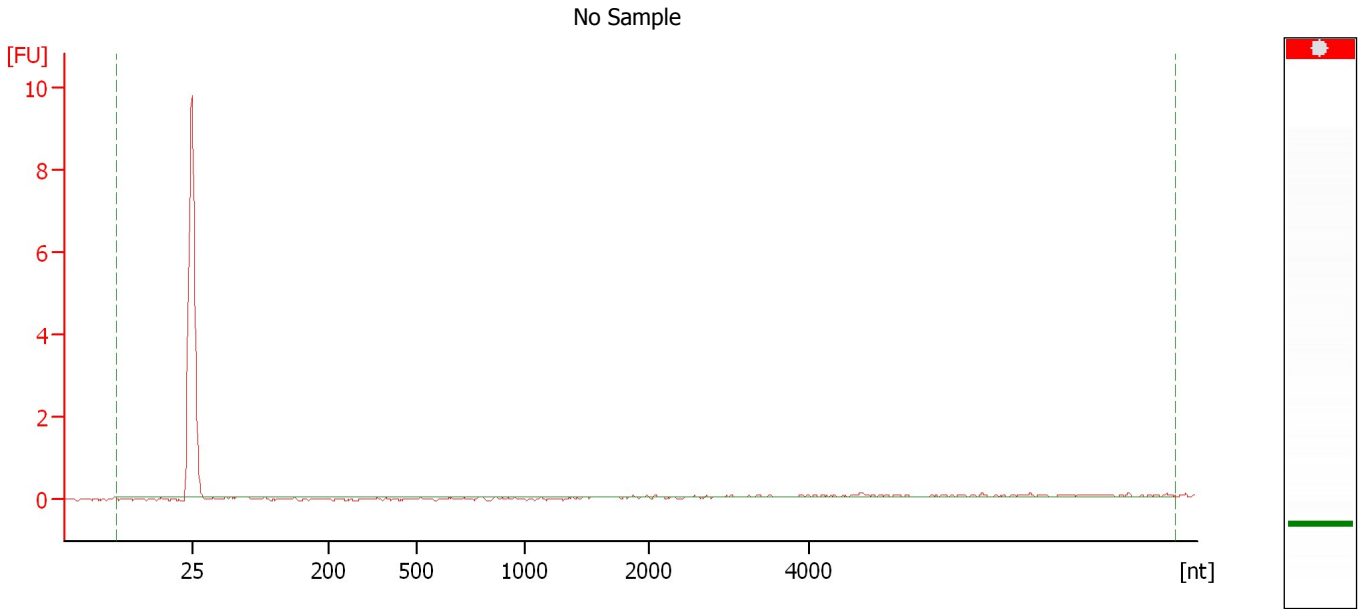
Overall Results for sample 8 : No Sample

RNA Area:	3.0	RNA Integrity Number (RIN):	N/A (B.02.08)
RNA Concentration:	4 ng/ μ l	Result Flagging Color:	
rRNA Ratio [28s / 18s]:	0.0	Result Flagging Label:	RIN N/A

Assay Class: Eukaryote Total RNA Nano
Data Path: C:\...ents and Settings\Bioanalyzer\2012-03-27\2012-03-27_007.xad

Created: 3/27/2012 4:14:58 PM
Modified: 3/27/2012 4:38:06 PM

Electropherogram Summary Continued ...



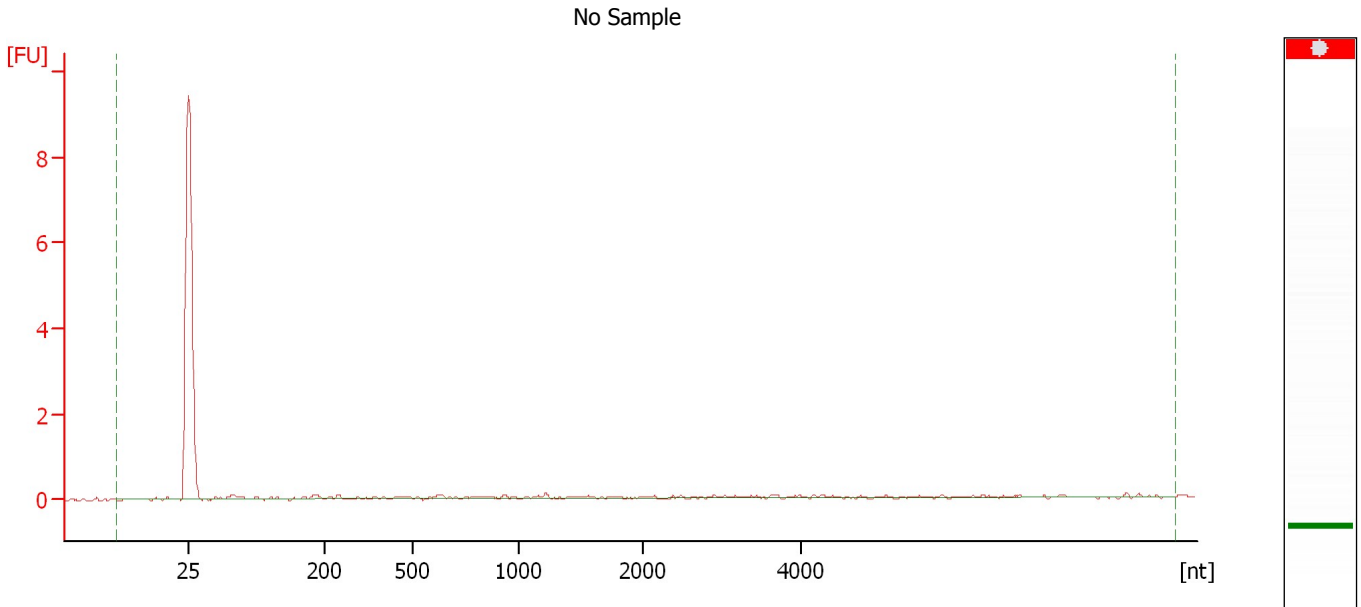
Overall Results for sample 9 : No Sample

RNA Area:	0.7	RNA Integrity Number (RIN):	N/A (B.02.08)
RNA Concentration:	1 ng/ μ l	Result Flagging Color:	
rRNA Ratio [28s / 18s]:	0.0	Result Flagging Label:	RIN N/A

Assay Class: Eukaryote Total RNA Nano
Data Path: C:\...ents and Settings\Bioanalyzer\2012-03-27\2012-03-27_007.xad

Created: 3/27/2012 4:14:58 PM
Modified: 3/27/2012 4:38:06 PM

Electropherogram Summary Continued ...



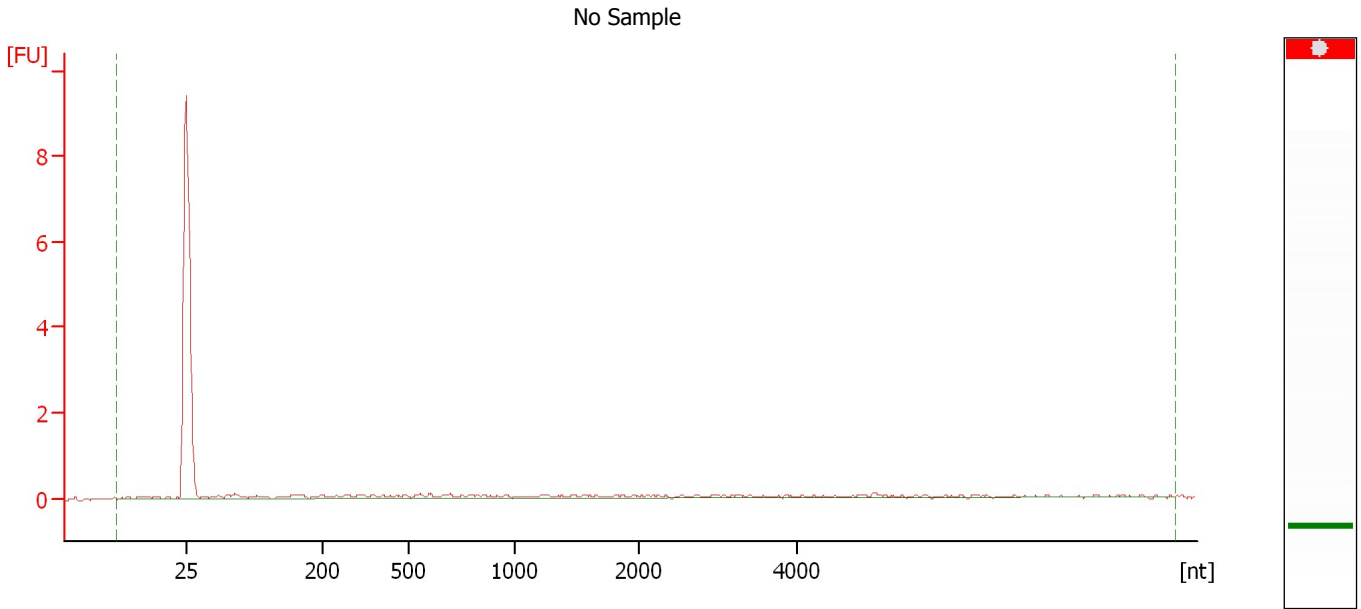
Overall Results for sample 10 : No Sample

RNA Area:	2.0	RNA Integrity Number (RIN):	N/A (B.02.08)
RNA Concentration:	3 ng/ μ l	Result Flagging Color:	
rRNA Ratio [28s / 18s]:	0.0	Result Flagging Label:	RIN N/A

Assay Class: Eukaryote Total RNA Nano
Data Path: C:\...ents and Settings\Bioanalyzer\2012-03-27\2012-03-27_007.xad

Created: 3/27/2012 4:14:58 PM
Modified: 3/27/2012 4:38:06 PM

Electropherogram Summary Continued ...



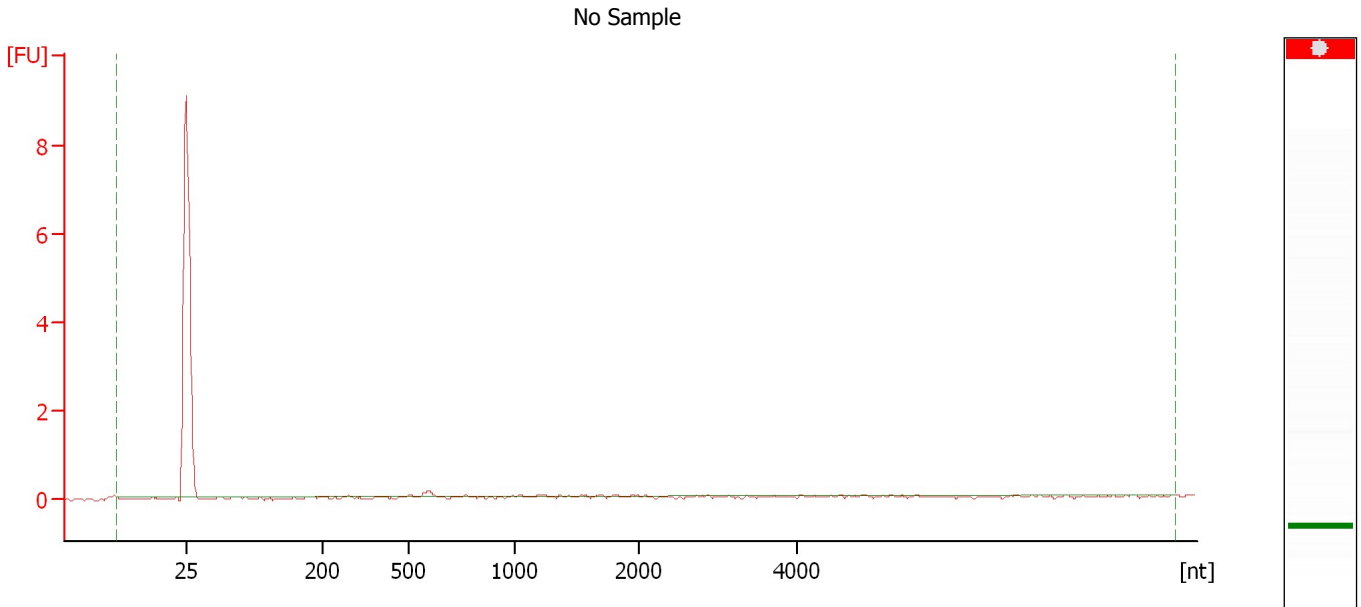
Overall Results for sample 11 : No Sample

RNA Area:	5.4	RNA Integrity Number (RIN):	N/A (B.02.08)
RNA Concentration:	7 ng/μl	Result Flagging Color:	
rRNA Ratio [28s / 18s]:	0.0	Result Flagging Label:	RIN N/A

Assay Class: Eukaryote Total RNA Nano
Data Path: C:\...ents and Settings\Bioanalyzer\2012-03-27\2012-03-27_007.xad

Created: 3/27/2012 4:14:58 PM
Modified: 3/27/2012 4:38:06 PM

Electropherogram Summary Continued ...



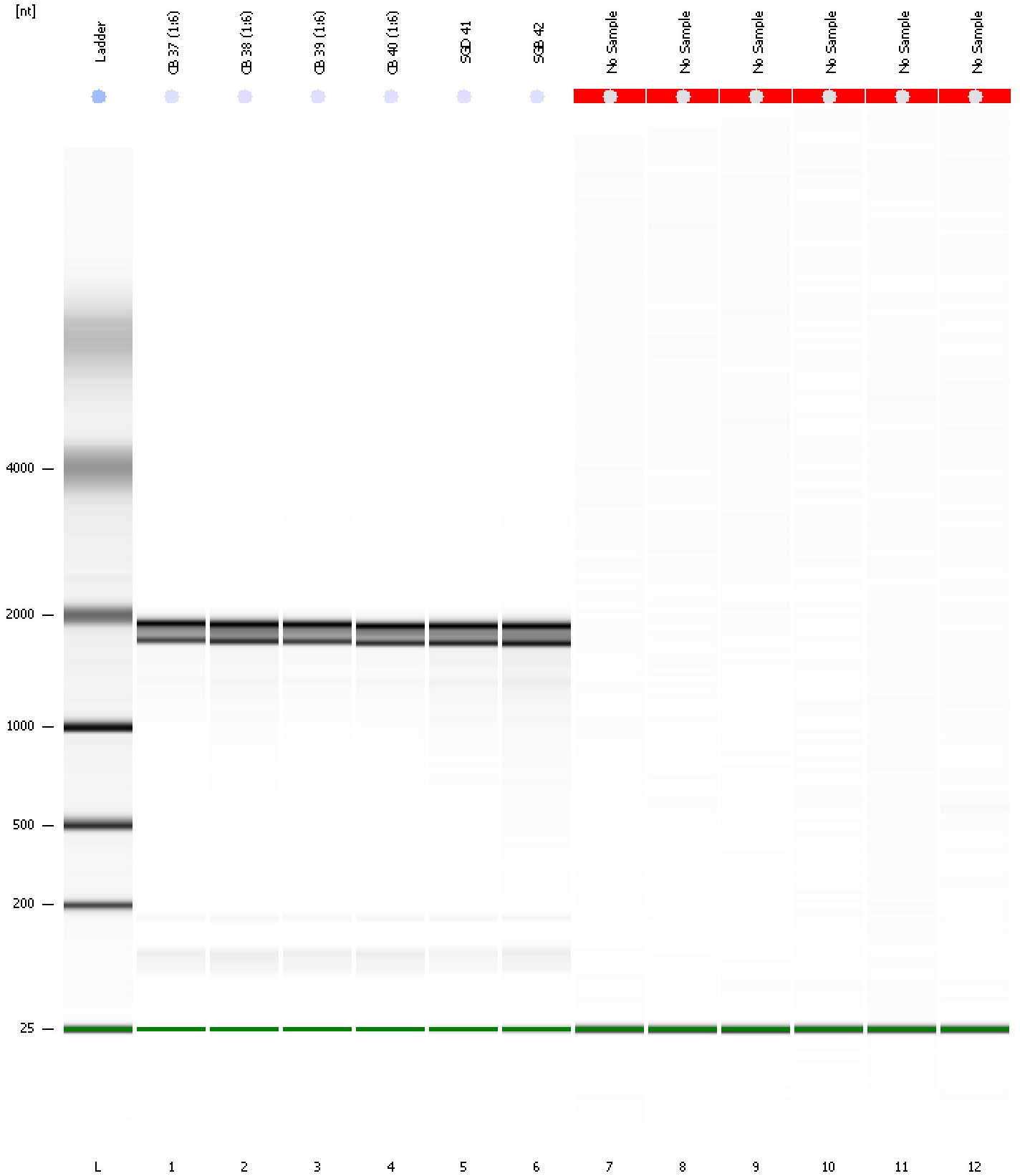
Overall Results for sample 12 : No Sample

RNA Area:	0.2	RNA Integrity Number (RIN):	N/A (B.02.08)
RNA Concentration:	0 ng/ μ l	Result Flagging Color:	
rRNA Ratio [28s / 18s]:	0.0	Result Flagging Label:	RIN N/A

Assay Class: Eukaryote Total RNA Nano
Data Path: C:\...ents and Settings\Bioanalyzer\2012-03-27\2012-03-27_007.xad

Created: 3/27/2012 4:14:58 PM
Modified: 3/27/2012 4:38:06 PM

Gel Image



Assay Class: Eukaryote Total RNA Nano
 Data Path: C:\...ents and Settings\Bioanalyzer\2012-03-27\2012-03-27_007.xad

Created: 3/27/2012 4:14:58 PM
 Modified: 3/27/2012 4:38:06 PM

Run Logbook

Description	Number	Source	Category	Sub Category	Time	Time Zone	User	Host
Run ended on port 1 (Number of wells acquired: 13)		Instrument	Run		3/27/2012 4:38:01 PM	(GMT --07:00) Pacific Standard Time	UC Davis	D8XSMGH1
Run started on port 1 (File: C:\Documents and Settings\Bioanalyzer\2012-03-27\2012-03-27_007.xad)		Instrument	Run		3/27/2012 4:15:04 PM	(GMT --07:00) Pacific Standard Time	UC Davis	D8XSMGH1
Product Number : G2938B		Instrument	Run		3/27/2012 4:15:04 PM	(GMT --07:00) Pacific Standard Time	UC Davis	D8XSMGH1
Name :		Instrument	Run		3/27/2012 4:15:04 PM	(GMT --07:00) Pacific Standard Time	UC Davis	D8XSMGH1
Vendor : Agilent Technologies		Instrument	Run		3/27/2012 4:15:04 PM	(GMT --07:00) Pacific Standard Time	UC Davis	D8XSMGH1
Serial# : DE13701086		Instrument	Run		3/27/2012 4:15:04 PM	(GMT --07:00) Pacific Standard Time	UC Davis	D8XSMGH1
Firmware : C.01.069		Instrument	Run		3/27/2012 4:15:04 PM	(GMT --07:00) Pacific Standard Time	UC Davis	D8XSMGH1
Cartridge : Electrode		Instrument	Run		3/27/2012 4:15:04 PM	(GMT --07:00) Pacific Standard Time	UC Davis	D8XSMGH1