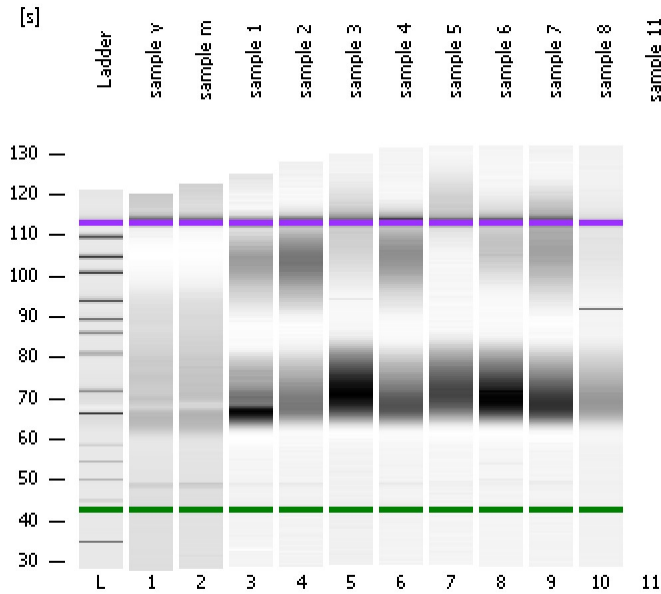


Assay Class: High Sensitivity DNA Assay
Data Path: C:\...ents and Settings\Bioanalyzer\2012-03-28\2012-03-28_001.xad

Created: 3/28/2012 11:53:04 AM
Modified: 3/28/2012 12:55:54 PM

Electrophoresis File Run Summary



Instrument Information:

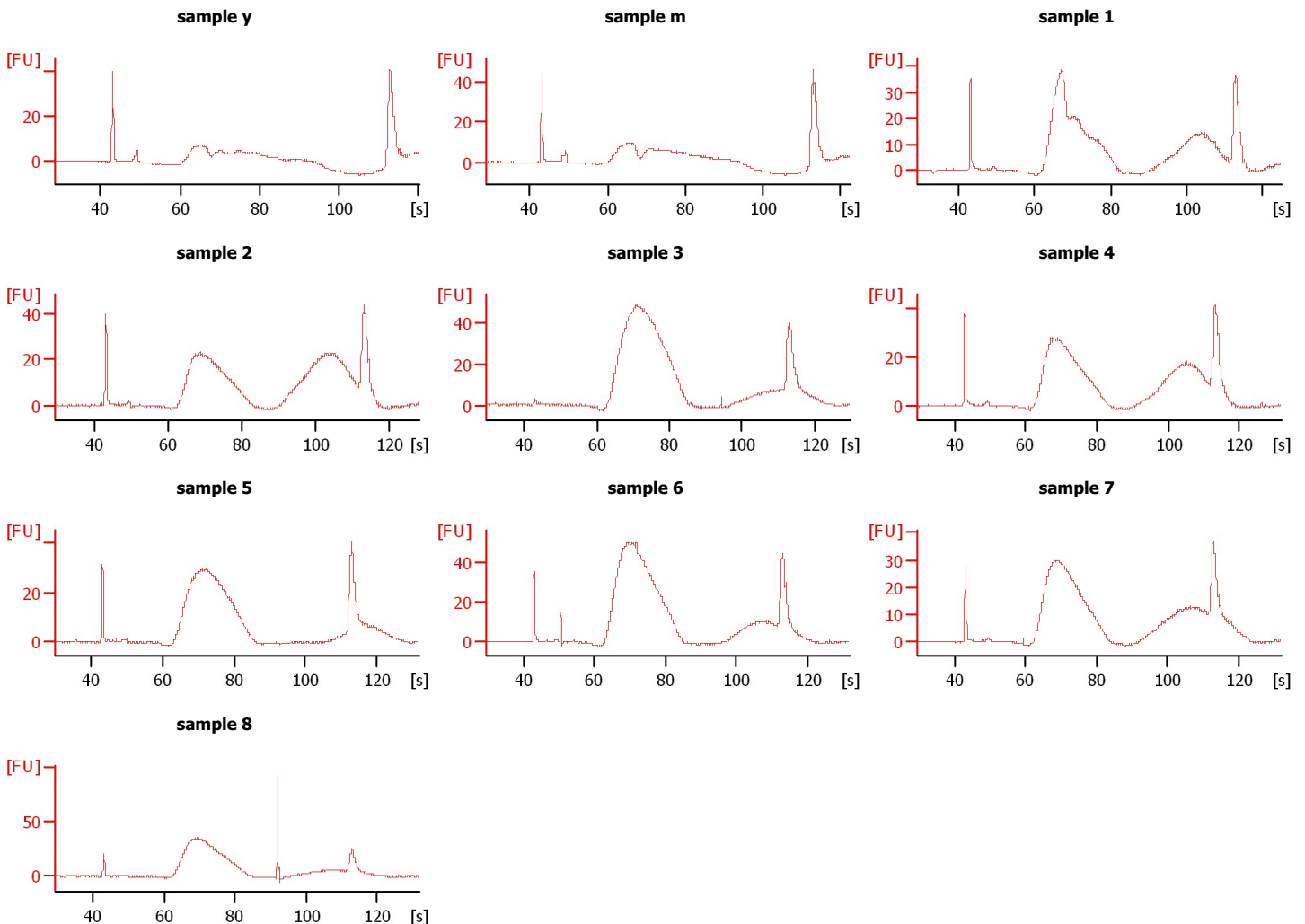
Instrument Name: DE13701086 Firmware: C.01.069
Serial#: DE13701086 Type: G2938B

Assay Information:

Assay Origin Path: C:\Program Files\Agilent\2100 bioanalyzer\2100 expert\assays\dsDNA\High Sensitivity DNA.xsy
Assay Class: High Sensitivity DNA Assay
Version: 1.03
Assay Comments: Copyright © 2003-2010 Agilent Technologies

Chip Information:

Chip Lot #:
Reagent Kit Lot #:
Chip Comments:



Assay Class: High Sensitivity DNA Assay
Data Path: C:\...ents and Settings\Bioanalyzer\2012-03-28\2012-03-28_001.xad

Created: 3/28/2012 11:53:04 AM
Modified: 3/28/2012 12:55:54 PM

Electrophoresis File Run Summary (Chip Summary)

Sample Name	Sample Comment	Rest. Digest	Status	Observation	Result Label	Result Color
sample y		<input type="checkbox"/>	✓			
sample m		<input type="checkbox"/>	✓			
sample 1		<input type="checkbox"/>	✓			
sample 2		<input type="checkbox"/>	✓			
sample 3		<input type="checkbox"/>	✓			
sample 4		<input type="checkbox"/>	✓			
sample 5		<input type="checkbox"/>	✓			
sample 6		<input type="checkbox"/>	✓			
sample 7		<input type="checkbox"/>	✓			
sample 8		<input type="checkbox"/>	✓			
sample 11		<input type="checkbox"/>	✓			
Ladder		<input type="checkbox"/>	✓			

Chip Lot #

Reagent Kit Lot #

Chip Comments :

Assay Class: High Sensitivity DNA Assay
Data Path: C:\...ents and Settings\Bioanalyzer\2012-03-28\2012-03-28_001.xad

Created: 3/28/2012 11:53:04 AM
Modified: 3/28/2012 12:55:54 PM

Electrophoresis Assay Details

General Analysis Settings

Number of Available Sample and Ladder Wells (Max.) : 12
Minimum Visible Range [s] : 32
Maximum Visible Range [s] : 138
Start Analysis Time Range [s] : 33
End Analysis Time Range [s] : 137.5
Ladder Concentration [pg/μl] : 1950
Uses Standard Area for Ladder Fragments
Lower Marker Concentration [pg/μl] : 125
Upper Marker Concentration [pg/μl] : 75
Used Upper Marker for Quantitation
Standard Curve Fit is Point to Point
Show Data Aligned to Lower and Upper Marker

Integrator Settings

Integration Start Time [s] : 33.05
Integration End Time [s] : 137
Slope Threshold : 0.8
Height Threshold [FU] : 5
Area Threshold : 0.1
Width Threshold [s] : 0.6
Baseline Plateau [s] : 0.5

Filter Settings

Filter Width [s] : 0.5
Polynomial Order : 4

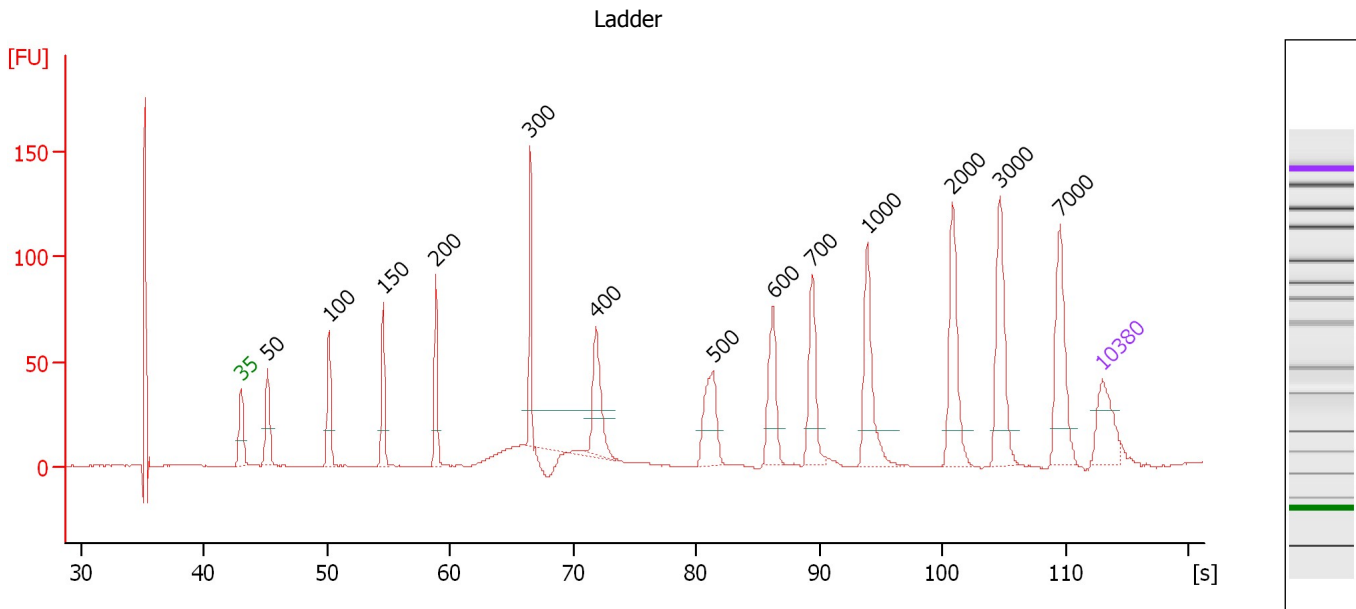
Ladder

Ladder Peak	Size	Area
1	35	160
2	50	210
3	100	208
4	150	221
5	200	242
6	300	270
7	400	305
8	500	306
9	600	336
10	700	321
11	1000	366
12	2000	413
13	3000	411
14	7000	400
15	10380	214

Assay Class: High Sensitivity DNA Assay
 Data Path: C:\...ents and Settings\Bioanalyzer\2012-03-28\2012-03-28_001.xad

Created: 3/28/2012 11:53:04 AM
 Modified: 3/28/2012 12:55:54 PM

Electropherogram Summary



Overall Results for Ladder

Noise: 0.1

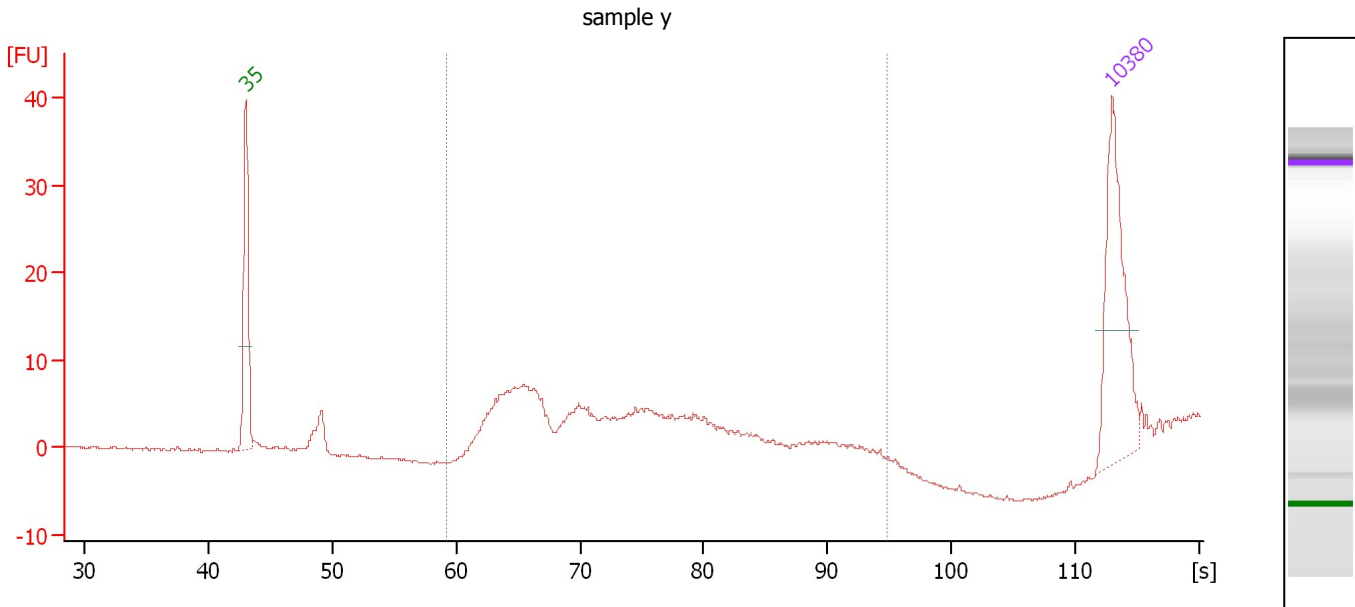
Peak table for Ladder

Peak	Size [bp]	Conc. [pg/μl]	Molarity [pmol/l]	Observations
1	35	125.00	5,411.3	Lower Marker
2	50	150.00	4,545.5	Ladder Peak
3	100	150.00	2,272.7	Ladder Peak
4	150	150.00	1,515.2	Ladder Peak
5	200	150.00	1,136.4	Ladder Peak
6	300	150.00	757.6	Ladder Peak
7	400	150.00	568.2	Ladder Peak
8	500	150.00	454.5	Ladder Peak
9	600	150.00	378.8	Ladder Peak
10	700	150.00	324.7	Ladder Peak
11	1,000	150.00	227.3	Ladder Peak
12	2,000	150.00	113.6	Ladder Peak
13	3,000	150.00	75.8	Ladder Peak
14	7,000	150.00	32.5	Ladder Peak
15	10,380	75.00	10.9	Upper Marker

Assay Class: High Sensitivity DNA Assay
 Data Path: C:\...ents and Settings\Bioanalyzer\2012-03-28\2012-03-28_001.xad

Created: 3/28/2012 11:53:04 AM
 Modified: 3/28/2012 12:55:54 PM

Electropherogram Summary Continued ...



Overall Results for sample 1 : sample y

Number of peaks found: 0
 Noise: 0.1
 Corr. Area 1: 67.7

Peak table for sample 1 : sample y

Peak	Size [bp]	Conc. [pg/μl]	Molarity [pmol/l]	Observations
1	35	125.00	5,411.3	Lower Marker
2	10,380	75.00	10.9	Upper Marker

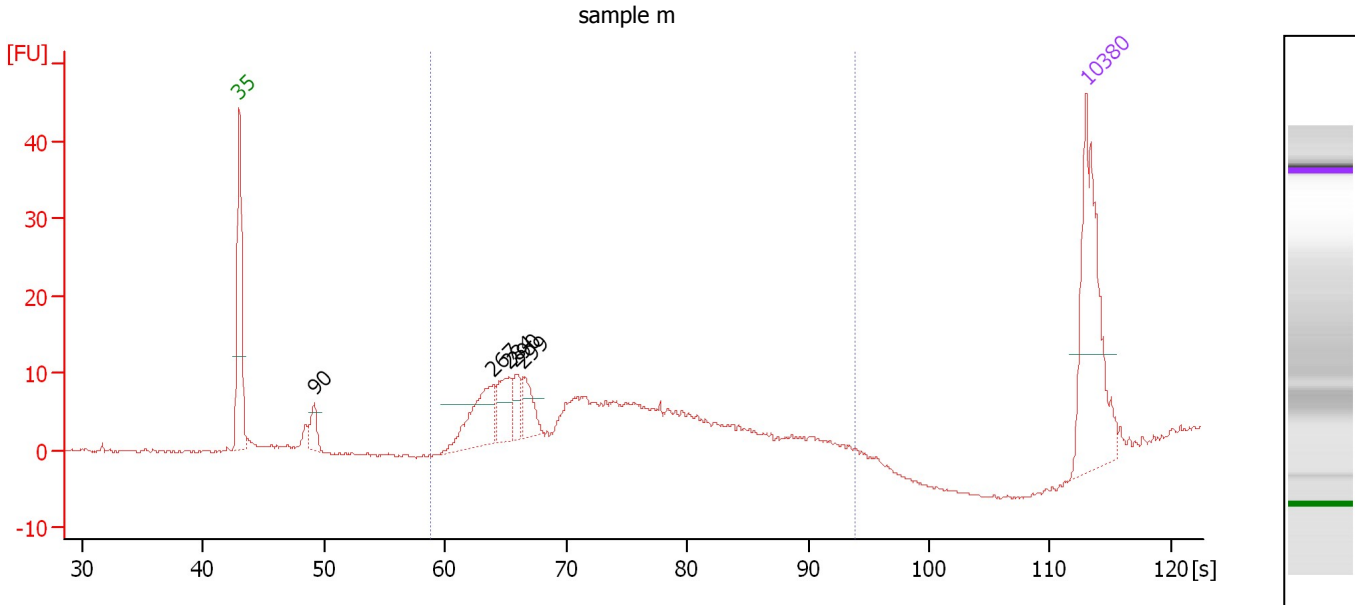
Region table for sample 1 : sample y

From [s]	Molarity [pmol/l]	Average Size [bp]	Conc. [pg/μl]	To [s]	Corr. Area	% of Total	Size distribution in CV [%]	Color
59.21	590.3	348	126.30	94.80	67.7	94	22.1	Blue

Assay Class: High Sensitivity DNA Assay
 Data Path: C:\...ents and Settings\Bioanalyzer\2012-03-28\2012-03-28_001.xad

Created: 3/28/2012 11:53:04 AM
 Modified: 3/28/2012 12:55:54 PM

Electropherogram Summary Continued ...



Overall Results for sample 2 : sample m

Number of peaks found: 5 Corr. Area 1: 144.7
 Noise: 0.1

Peak table for sample 2 : sample m

Peak	Size [bp]	Conc. [pg/μl]	Molarity [pmol/l]	Observations
1	35	125.00	5,411.3	Lower Marker
2	90	16.74	281.7	
3	267	50.85	288.4	
4	284	28.14	149.9	
5	290	15.01	78.4	
6	299	19.46	98.5	
7	10,380	75.00	10.9	Upper Marker

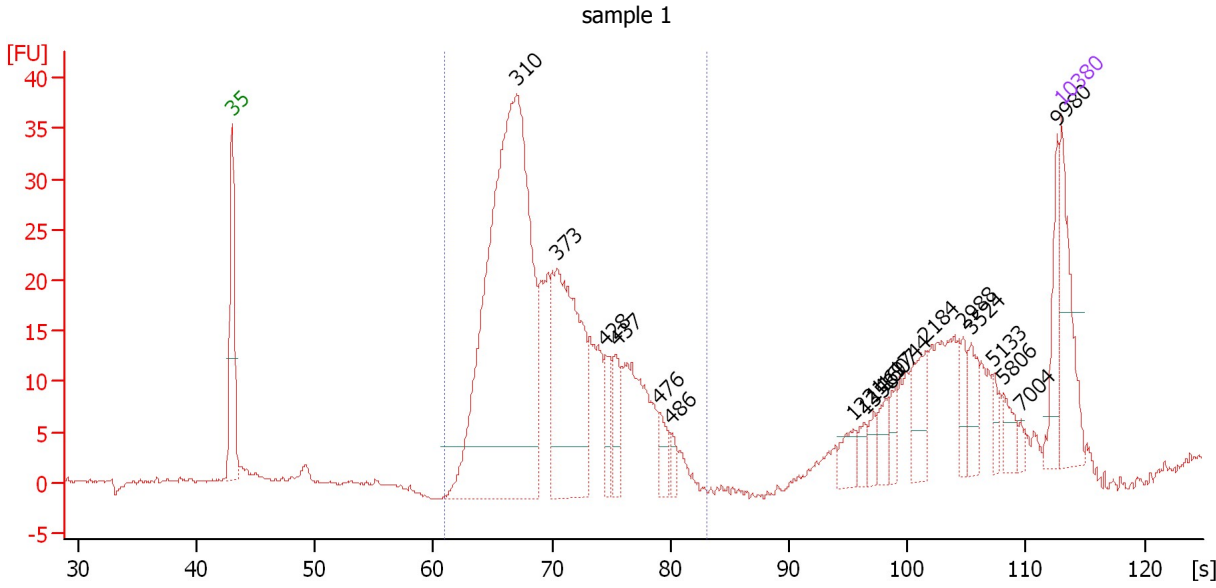
Region table for sample 2 : sample m

From [s]	Molarity [pmol/l]	Average Size [bp]	Conc. [pg/μl]	To [s]	Corr. Area	% of Total	Size distribution in CV [%]	Color
58.84	1,040.3	372	232.96	93.89	144.7	92	24.4	Blue

Assay Class: High Sensitivity DNA Assay
 Data Path: C:\...ents and Settings\Bioanalyzer\2012-03-28\2012-03-28_001.xad

Created: 3/28/2012 11:53:04 AM
 Modified: 3/28/2012 12:55:54 PM

Electropherogram Summary Continued ...



Overall Results for sample 3 : sample 1

Number of peaks found: 18 Corr. Area 1: 417.6
 Noise: 0.2

Peak table for sample 3 : sample 1

Peak	Size [bp]	Conc. [pg/μl]	Molarity [pmol/l]	Observations
1	35	125.00	5,411.3	Lower Marker
2	310	882.76	4,313.7	
3	373	281.29	1,142.5	
4	428	34.68	122.9	
5	437	43.77	151.6	
6	476	23.15	73.7	
7	486	12.95	40.3	
8	1,221	22.34	27.7	
9	1,358	12.61	14.1	
10	1,469	12.34	12.7	
11	1,607	18.71	17.6	
12	1,744	14.96	13.0	
13	2,184	41.52	28.8	
14	2,988	18.73	9.5	
15	3,524	27.07	11.6	
16	5,133	11.80	3.5	
17	5,806	17.63	4.6	
18	7,004	5.76	1.2	
19	9,980	41.02	6.2	
20	10,380	75.00	10.9	Upper Marker

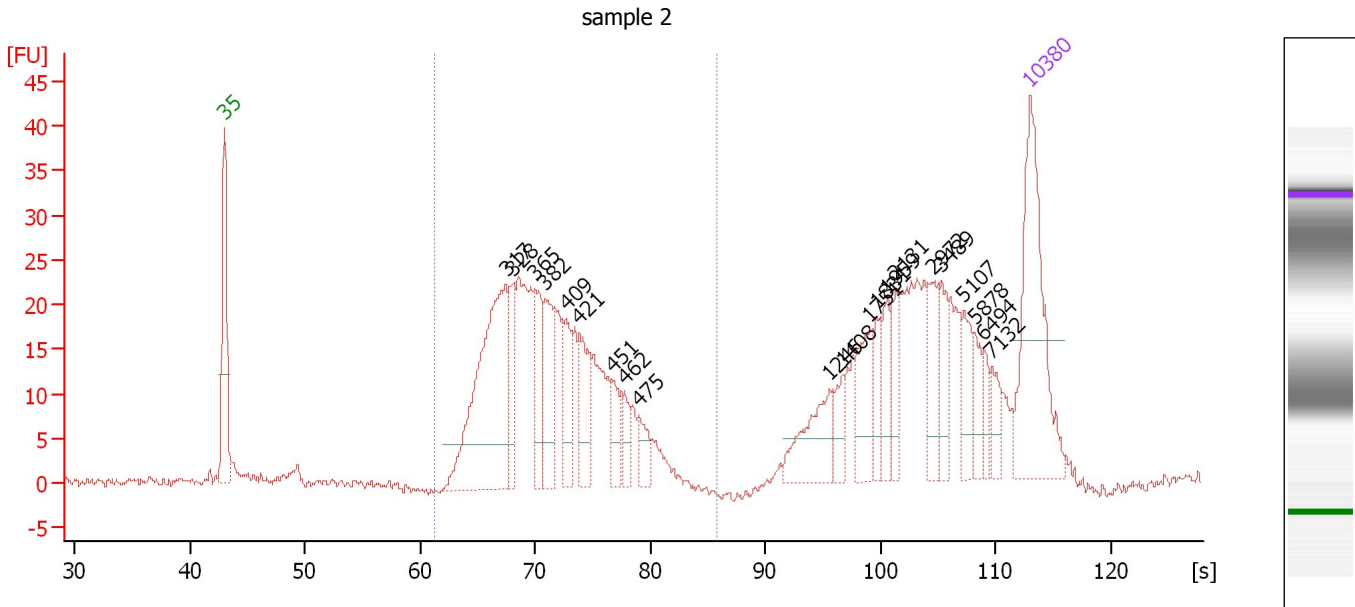
Region table for sample 3 : sample 1

From [s]	Molarity [pmol/l]	Average Size [bp]	Conc. [pg/μl]	To [s]	Corr. Area	% of Total	Size distribution in CV [%]	Color
60.95	6,354.9	353	1,416.23	83.11	417.6	74	18.2	Blue

Assay Class: High Sensitivity DNA Assay
 Data Path: C:\...ents and Settings\Bioanalyzer\2012-03-28\2012-03-28_001.xad

Created: 3/28/2012 11:53:04 AM
 Modified: 3/28/2012 12:55:54 PM

Electropherogram Summary Continued ...



Overall Results for sample 4 : sample 2

Number of peaks found: 21 Corr. Area 1: 358.0
 Noise: 0.5

Peak table for sample 4 : sample 2

Peak	Size [bp]	Conc. [pg/μl]	Molarity [pmol/l]	Observations
1	35	125.00	5,411.3	Lower Marker
2	317	153.41	732.1	
3	328	30.43	140.6	
4	365	33.28	138.2	
5	382	43.94	174.1	
6	409	25.81	95.7	
7	421	31.90	114.9	
8	451	16.76	56.3	
9	462	12.02	39.4	
10	475	13.01	41.5	
11	1,246	32.91	40.0	
12	1,408	11.05	11.9	
13	1,751	24.28	21.0	
14	1,831	12.20	10.1	
15	1,959	16.63	12.9	
16	2,131	13.68	9.7	
17	2,972	19.10	9.7	
18	3,489	17.48	7.6	
19	5,107	16.89	5.0	
20	5,878	10.34	2.7	
21	6,494	8.01	1.9	
22	7,132	11.24	2.4	
23	10,380	75.00	10.9	Upper Marker

Assay Class: High Sensitivity DNA Assay
Data Path: C:\...ents and Settings\Bioanalyzer\2012-03-28\2012-03-28_001.xad

Created: 3/28/2012 11:53:04 AM
Modified: 3/28/2012 12:55:54 PM

Electropherogram Summary Continued ...

... Region table for sample 4 :

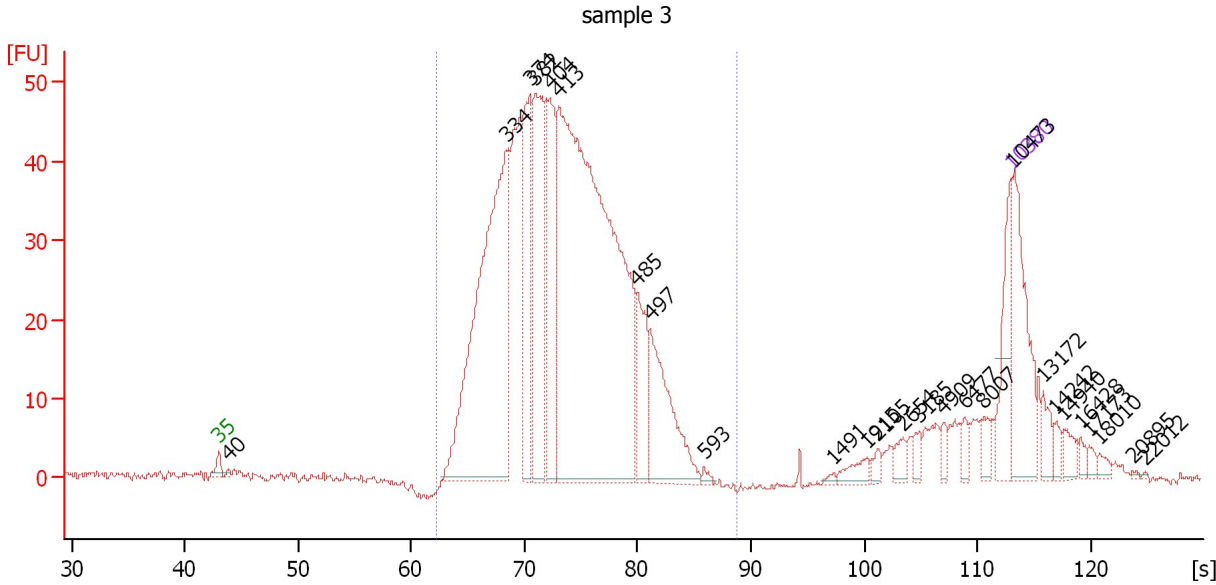
sample 2

From [s]	Molarity [pmol/l]	Average Size [bp]	Conc. [pg/μl]	To [s]	Corr. Area % of Total	Size distribution in CV [%]	Color
61.26	2,190.8	377	523.16	85.84	358.0	55	16.5

Assay Class: High Sensitivity DNA Assay
 Data Path: C:\...ents and Settings\Bioanalyzer\2012-03-28\2012-03-28_001.xad

Created: 3/28/2012 11:53:04 AM
 Modified: 3/28/2012 12:55:54 PM

Electropherogram Summary Continued ...



Setpoint Deviations for sample 5 : sample 3

Height Threshold [FU] : 0.5

Overall Results for sample 5 : sample 3

Number of peaks found: 26 Corr. Area 1: 858.7
 Noise: 0.5

Peak table for sample 5 : sample 3

Peak	Size [bp]	Conc. [pg/μl]	Molarity [pmol/l]	Observations
1	35	125.00	5,411.3	Lower Marker
2	40	4.04	152.2	
3	334	698.96	3,169.0	
4	374	202.19	818.5	
5	382	226.88	899.2	
6	404	181.56	680.8	
7	413	1,188.16	4,363.7	
8	485	102.12	319.1	
9	497	177.73	541.4	
10	593	5.36	13.7	
11	1,491	3.64	3.7	
12	1,915	17.71	14.0	
13	2,105	8.75	6.3	
14	2,654	14.58	8.3	
15	3,185	12.14	5.8	
16	4,909	10.74	3.3	
17	6,477	12.36	2.9	
18	8,007	16.70	3.2	
19	10,380	75.00	10.9	Upper Marker
20	10,473	0.00	0.0	
21	13,172	0.00	0.0	
22	14,242	0.00	0.0	


Assay Class: High Sensitivity DNA Assay
Data Path: C:\...ents and Settings\Bioanalyzer\2012-03-28\2012-03-28_001.xad

Created: 3/28/2012 11:53:04 AM
Modified: 3/28/2012 12:55:54 PM

Electropherogram Summary Continued ...**... Peak table for sample 5 : sample 3**

Peak	Size [bp]	Conc. [pg/μl]	Molarity [pmol/l]	Observations
23	14,940	0.00	0.0	
24	16,428	0.00	0.0	
25	17,173	0.00	0.0	
26	18,010	0.00	0.0	
27	20,895	0.00	0.0	
28	22,012	0.00	0.0	

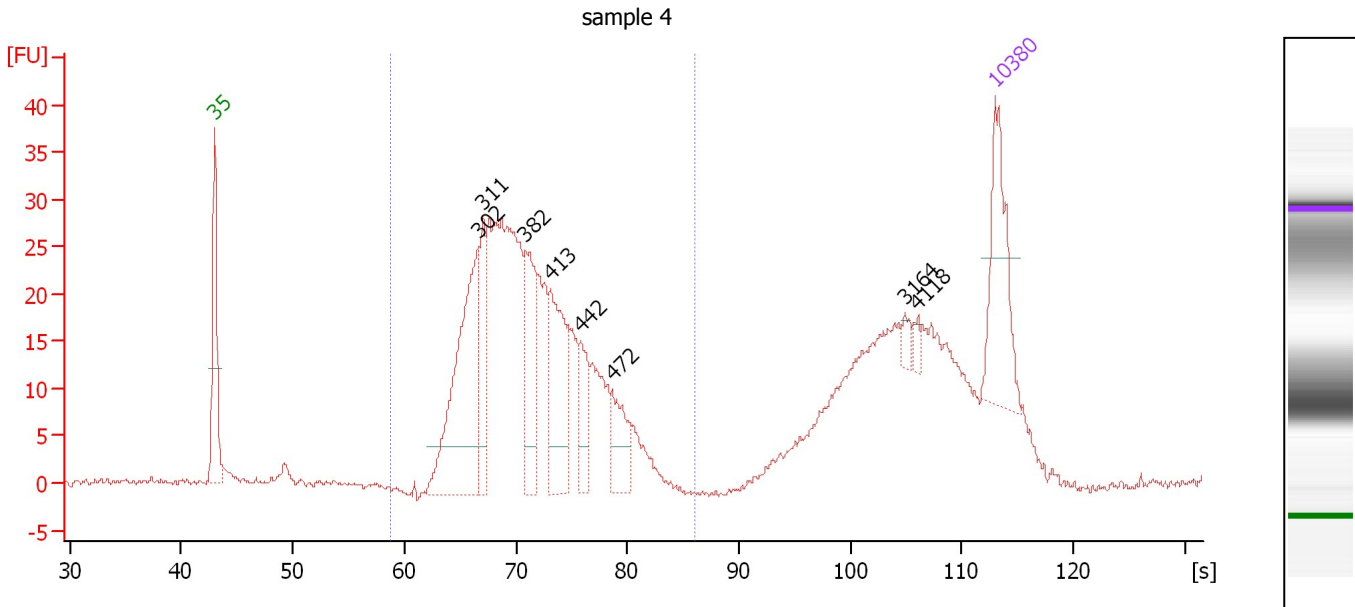
Region table for sample 5 : sample 3

From [s]	Molarity [pmol/l]	Average Size [bp]	Conc. [pg/μl]	To [s]	Corr. Area % of Total	Size distribution in CV [%]	Color	
62.27	11,978.6	403	3,066.70	88.83	858.7	85	16.1	

Assay Class: High Sensitivity DNA Assay
 Data Path: C:\...ents and Settings\Bioanalyzer\2012-03-28\2012-03-28_001.xad

Created: 3/28/2012 11:53:04 AM
 Modified: 3/28/2012 12:55:54 PM

Electropherogram Summary Continued ...



Overall Results for sample 6 : sample 4

Number of peaks found: 8 Corr. Area 1: 432.1
 Noise: 0.3

Peak table for sample 6 : sample 4

Peak	Size [bp]	Conc. [pg/μl]	Molarity [pmol/l]	Observations
1	35	125.00	5,411.3	Lower Marker
2	302	226.49	1,134.5	
3	311	64.27	313.5	
4	382	92.53	366.9	
5	413	109.54	401.6	
6	442	40.65	139.5	
7	472	46.20	148.5	
8	3,164	7.29	3.5	
9	4,118	6.69	2.5	
10	10,380	75.00	10.9	Upper Marker

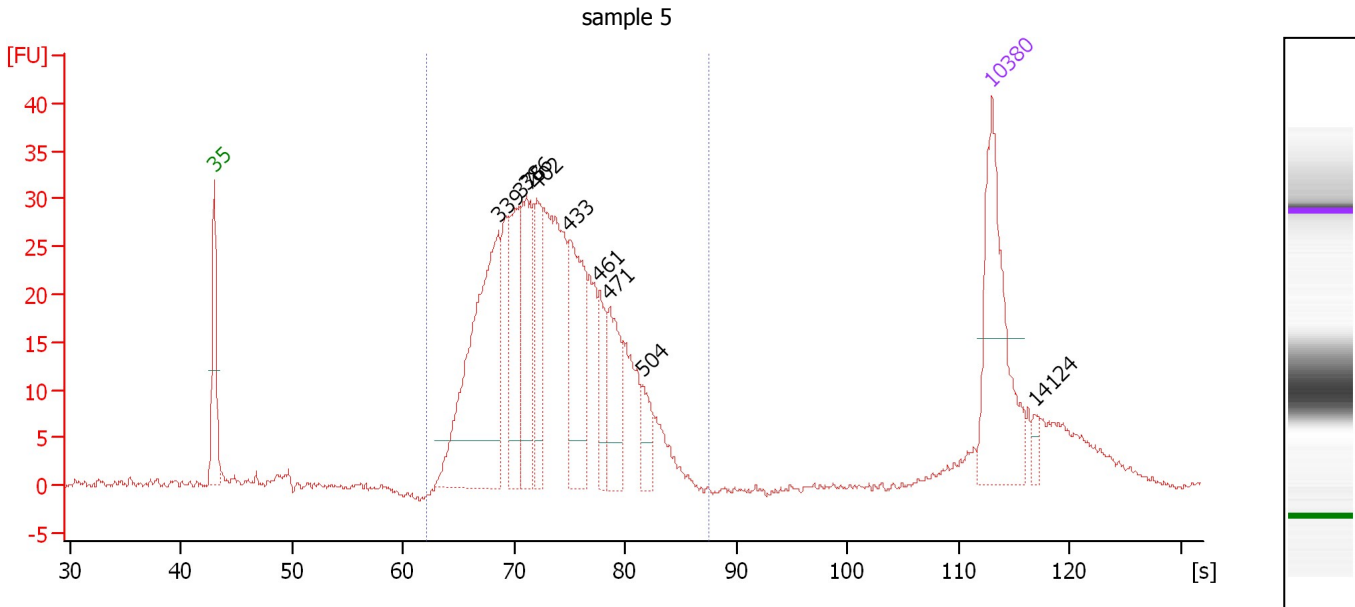
Region table for sample 6 : sample 4

From [s]	Molarity [pmol/l]	Average Size [bp]	Conc. [pg/μl]	To [s]	Corr. Area	% of Total	Size distribution in CV [%]	Color
58.84	4,368.9	376	1,040.27	86.06	432.1	66	17.0	Blue

Assay Class: High Sensitivity DNA Assay
 Data Path: C:\...ents and Settings\Bioanalyzer\2012-03-28\2012-03-28_001.xad

Created: 3/28/2012 11:53:04 AM
 Modified: 3/28/2012 12:55:54 PM

Electropherogram Summary Continued ...



Overall Results for sample 7 : sample 5

Number of peaks found: 9 Corr. Area 1: 528.2
 Noise: 0.3

Peak table for sample 7 : sample 5

Peak	Size [bp]	Conc. [pg/μl]	Molarity [pmol/l]	Observations
1	35	125.00	5,411.3	Lower Marker
2	339	185.58	830.6	
3	375	61.60	249.0	
4	386	70.87	278.4	
5	402	45.96	173.1	
6	433	81.14	283.8	
7	461	26.12	85.8	
8	471	44.39	142.9	
9	504	18.91	56.8	
10	10,380	75.00	10.9	Upper Marker
11	14,124	0.00	0.0	

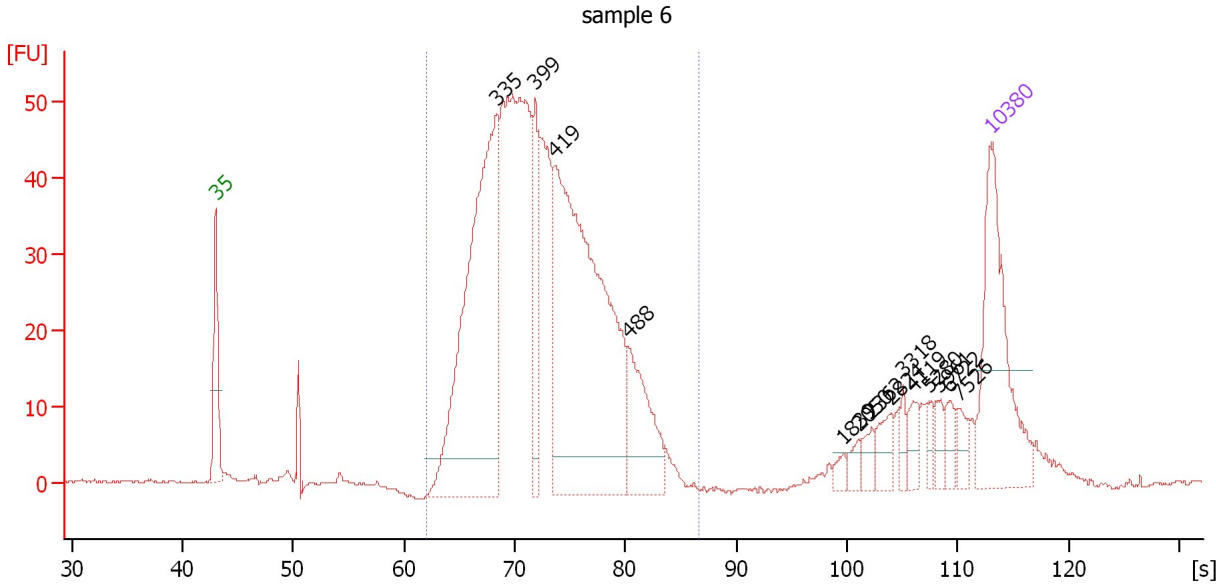
Region table for sample 7 : sample 5

From [s]	Molarity [pmol/l]	Average Size [bp]	Conc. [pg/μl]	To [s]	Corr. Area	% of Total	Size distribution in CV [%]	Color
62.15	3,097.7	405	796.62	87.62	528.2	90	16.1	Blue

Assay Class: High Sensitivity DNA Assay
 Data Path: C:\...ents and Settings\Bioanalyzer\2012-03-28\2012-03-28_001.xad

Created: 3/28/2012 11:53:04 AM
 Modified: 3/28/2012 12:55:54 PM

Electropherogram Summary Continued ...



Overall Results for sample 8 : sample 6

Number of peaks found: 14 Corr. Area 1: 844.7
 Noise: 0.2

Peak table for sample 8 : sample 6

Peak	Size [bp]	Conc. [pg/μl]	Molarity [pmol/l]	Observations
1	35	125.00	5,411.3	Lower Marker
2	335	281.76	1,275.4	
3	399	52.36	198.6	
4	419	324.11	1,171.9	
5	488	59.70	185.2	
6	1,839	4.33	3.6	
7	2,050	5.94	4.4	
8	2,362	7.05	4.5	
9	2,824	12.10	6.5	
10	3,318	6.19	2.8	
11	4,119	9.73	3.6	
12	5,280	6.12	1.8	
13	5,961	7.76	2.0	
14	6,722	8.47	1.9	
15	7,526	8.56	1.7	
16	10,380	75.00	10.9	Upper Marker

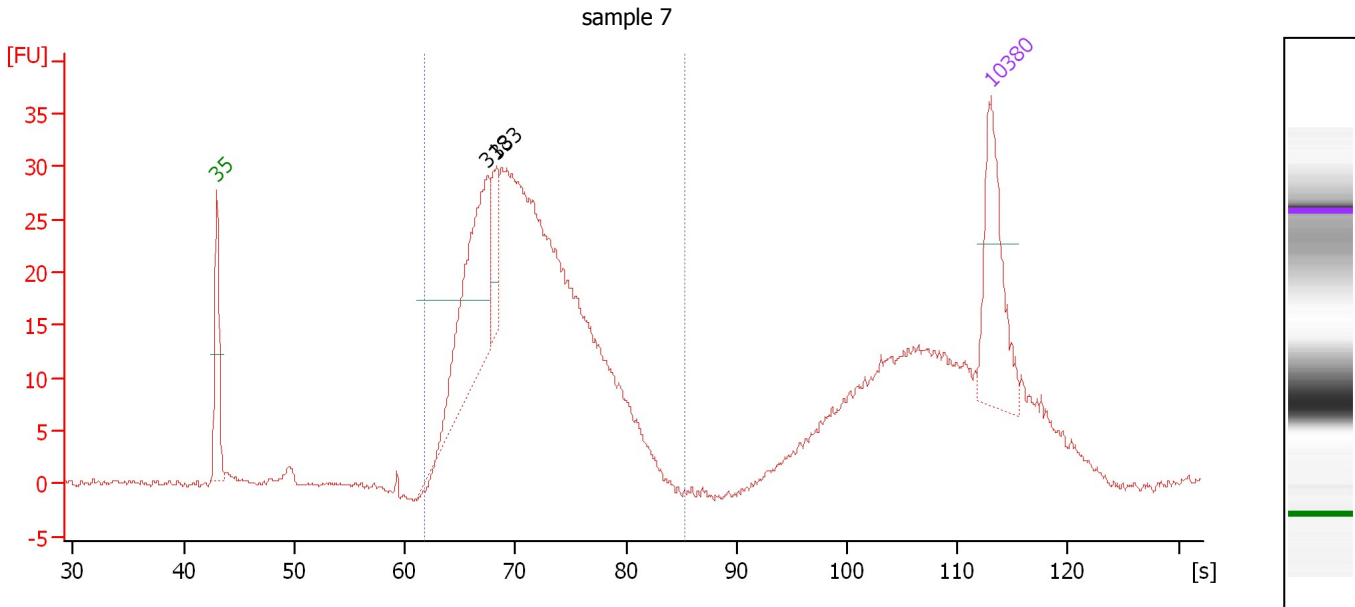
Region table for sample 8 : sample 6

From [s]	Molarity [pmol/l]	Average Size [bp]	Conc. [pg/μl]	To [s]	Corr. Area	% of Total	Size distribution in CV [%]	Color
62.07	4,014.1	393	1,001.75	86.71	844.7	88	16.4	Blue

Assay Class: High Sensitivity DNA Assay
 Data Path: C:\...ents and Settings\Bioanalyzer\2012-03-28\2012-03-28_001.xad

Created: 3/28/2012 11:53:04 AM
 Modified: 3/28/2012 12:55:54 PM

Electropherogram Summary Continued ...



Overall Results for sample 9 : sample 7

Number of peaks found: 2 Corr. Area 1: 482.3
 Noise: 0.2

Peak table for sample 9 : sample 7

Peak	Size [bp]	Conc. [pg/μl]	Molarity [pmol/l]	Observations
1	35	125.00	5,411.3	Lower Marker
2	318	176.86	842.5	
3	333	39.60	180.4	
4	10,380	75.00	10.9	Upper Marker

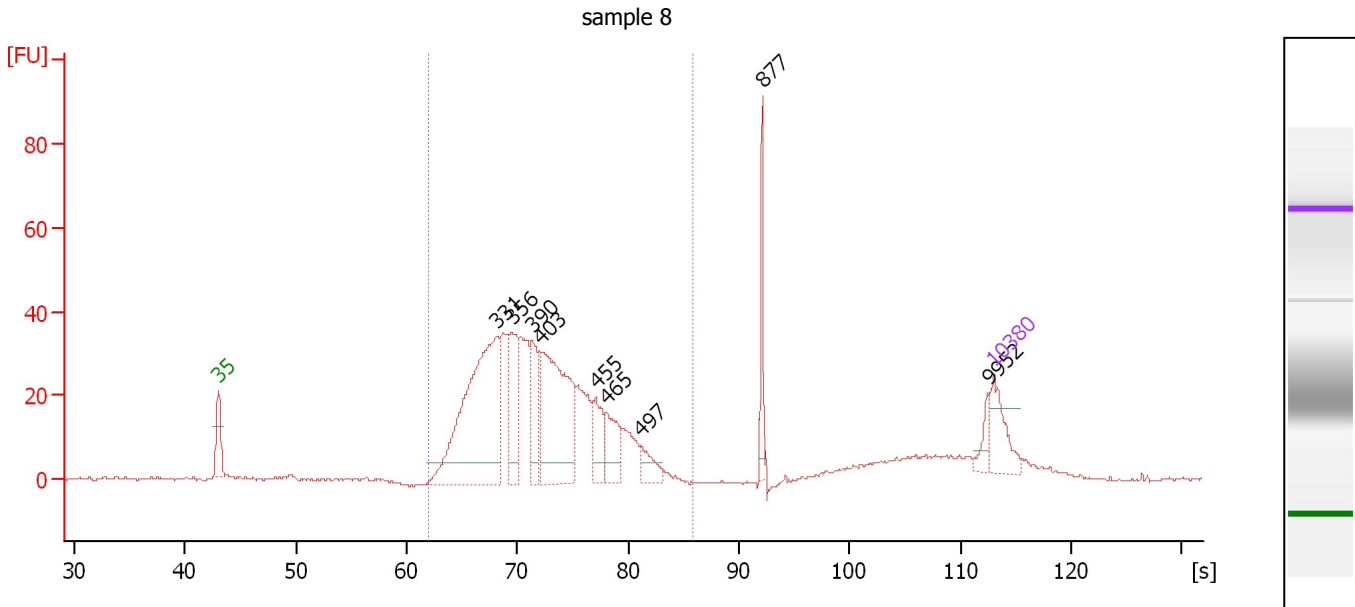
Region table for sample 9 : sample 7

From [s]	Molarity [pmol/l]	Average Size [bp]	Conc. [pg/μl]	To [s]	Corr. Area	% of Total	Size distribution in CV [%]	Color
61.78	4,766.2	378	1,139.14	85.31	482.3	71	17.1	Blue

Assay Class: High Sensitivity DNA Assay
 Data Path: C:\...ents and Settings\Bioanalyzer\2012-03-28\2012-03-28_001.xad

Created: 3/28/2012 11:53:04 AM
 Modified: 3/28/2012 12:55:54 PM

Electropherogram Summary Continued ...



Overall Results for sample 10 : sample 8

Number of peaks found: 9 Corr. Area 1: 575.1
 Noise: 0.3

Peak table for sample 10 : sample 8

Peak	Size [bp]	Conc. [pg/μl]	Molarity [pmol/l]	Observations
1	35	125.00	5,411.3	Lower Marker
2	331	659.36	3,020.5	
3	356	157.38	669.4	
4	390	128.14	497.9	
5	403	410.23	1,542.2	
6	455	85.75	285.6	
7	465	97.78	318.8	
8	497	50.45	153.7	
9	877	72.63	125.5	
10	9,952	28.64	4.4	
11	10,380	75.00	10.9	Upper Marker

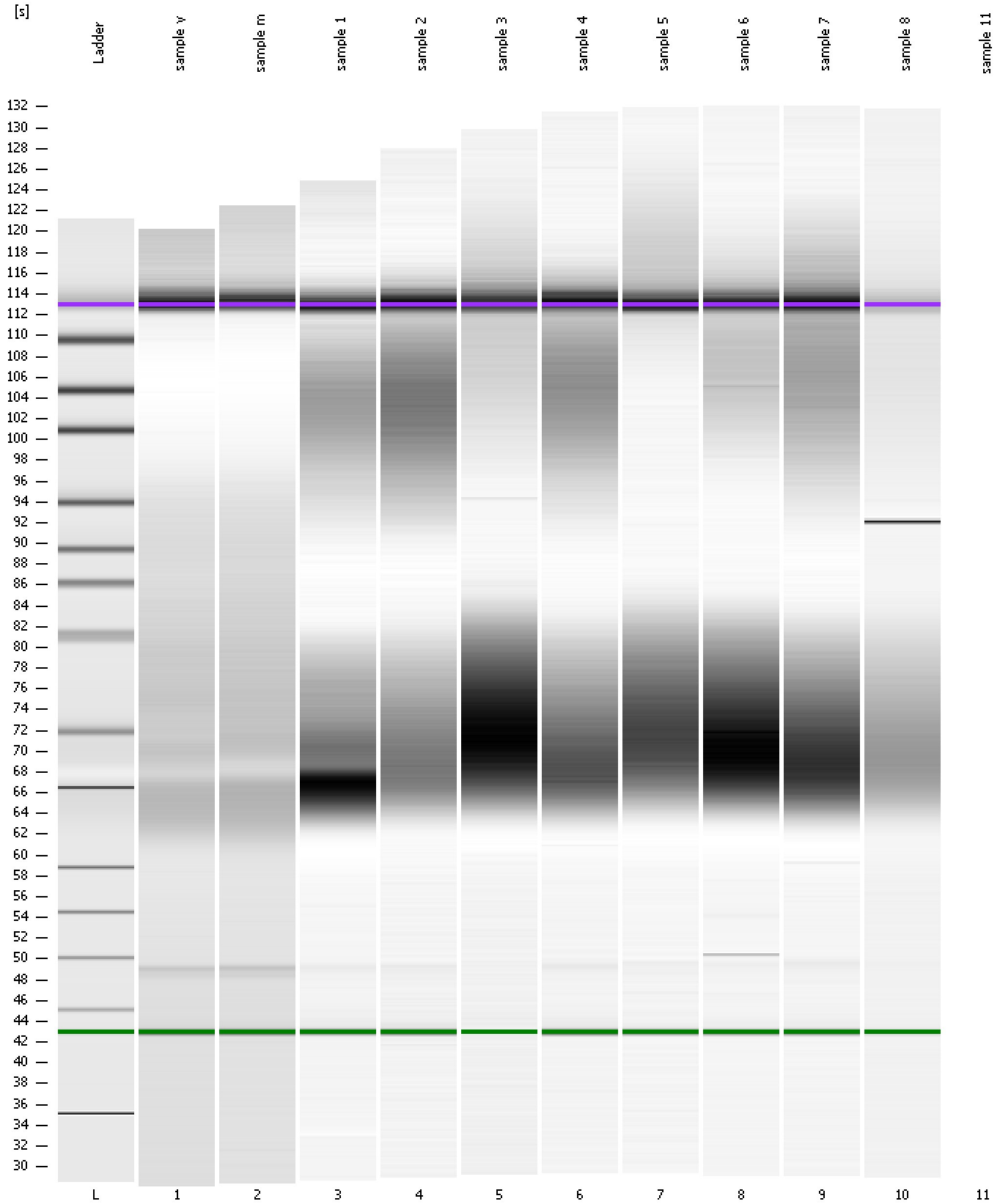
Region table for sample 10 : sample 8

From [s]	Molarity [pmol/l]	Average Size [bp]	Conc. [pg/μl]	To [s]	Corr. Area	% of Total	Size distribution in CV [%]	Color
62.05	8,518.3	384	2,067.54	85.76	575.1	84	17.0	Blue

Assay Class: High Sensitivity DNA Assay
Data Path: C:\...ents and Settings\Bioanalyzer\2012-03-28\2012-03-28_001.xad

Created: 3/28/2012 11:53:04 AM
Modified: 3/28/2012 12:55:54 PM

Gel Image



Assay Class: High Sensitivity DNA Assay
Data Path: C:\...ents and Settings\Bioanalyzer\2012-03-28\2012-03-28_001.xad

Created: 3/28/2012 11:53:04 AM
Modified: 3/28/2012 12:55:54 PM

Invalid Samples

Sample 11 has not been run, no results available.

Assay Class: High Sensitivity DNA Assay
 Data Path: C:\...ents and Settings\Bioanalyzer\2012-03-28\2012-03-28_001.xad

Created: 3/28/2012 11:53:04 AM
 Modified: 3/28/2012 12:55:54 PM

Run Logbook

Description	Number	Source	Category	Sub Category	Time	Time Zone	User	Host
Run ended on port 1 (Number of wells acquired: 11)		Instrument	Run		3/28/2012 12:31:29 PM	(GMT --07:00) Pacific Standard Time	UC Davis	D8XSMGH1
Run started on port 1 (File: C:\Documents and Settings\Bioanalyzer\2012-03-28\2012-03-28_001.xad)		Instrument	Run		3/28/2012 11:53:09 AM	(GMT --07:00) Pacific Standard Time	UC Davis	D8XSMGH1
Product Number : G2938B		Instrument	Run		3/28/2012 11:53:09 AM	(GMT --07:00) Pacific Standard Time	UC Davis	D8XSMGH1
Name :		Instrument	Run		3/28/2012 11:53:09 AM	(GMT --07:00) Pacific Standard Time	UC Davis	D8XSMGH1
Vendor : Agilent Technologies		Instrument	Run		3/28/2012 11:53:09 AM	(GMT --07:00) Pacific Standard Time	UC Davis	D8XSMGH1
Serial# : DE13701086		Instrument	Run		3/28/2012 11:53:09 AM	(GMT --07:00) Pacific Standard Time	UC Davis	D8XSMGH1
Firmware : C.01.069		Instrument	Run		3/28/2012 11:53:09 AM	(GMT --07:00) Pacific Standard Time	UC Davis	D8XSMGH1
Cartridge : Electrode		Instrument	Run		3/28/2012 11:53:09 AM	(GMT --07:00) Pacific Standard Time	UC Davis	D8XSMGH1