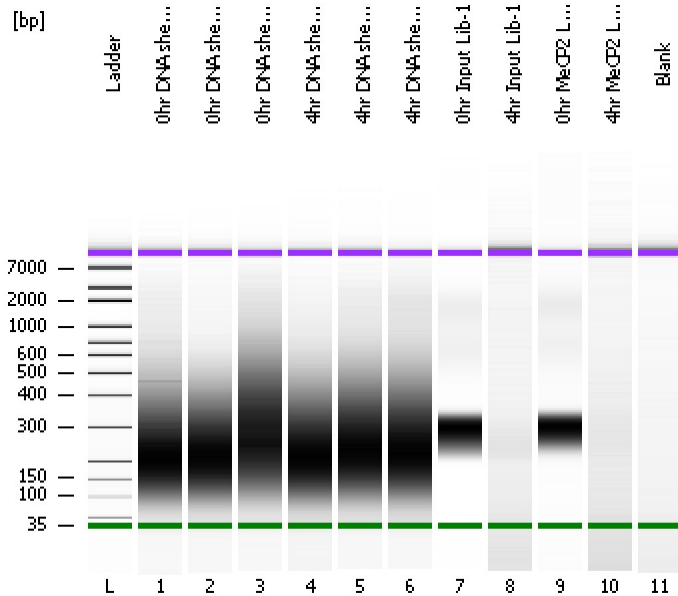


Assay Class: High Sensitivity DNA Assay
 Data Path: C:\...\Bioanalyzer\2012-04-02\2012-04-02_004_WoojefromGonglab.xad

Created: 4/2/2012 1:07:13 PM
 Modified: 4/2/2012 1:49:21 PM

Electrophoresis File Run Summary



Instrument Information:

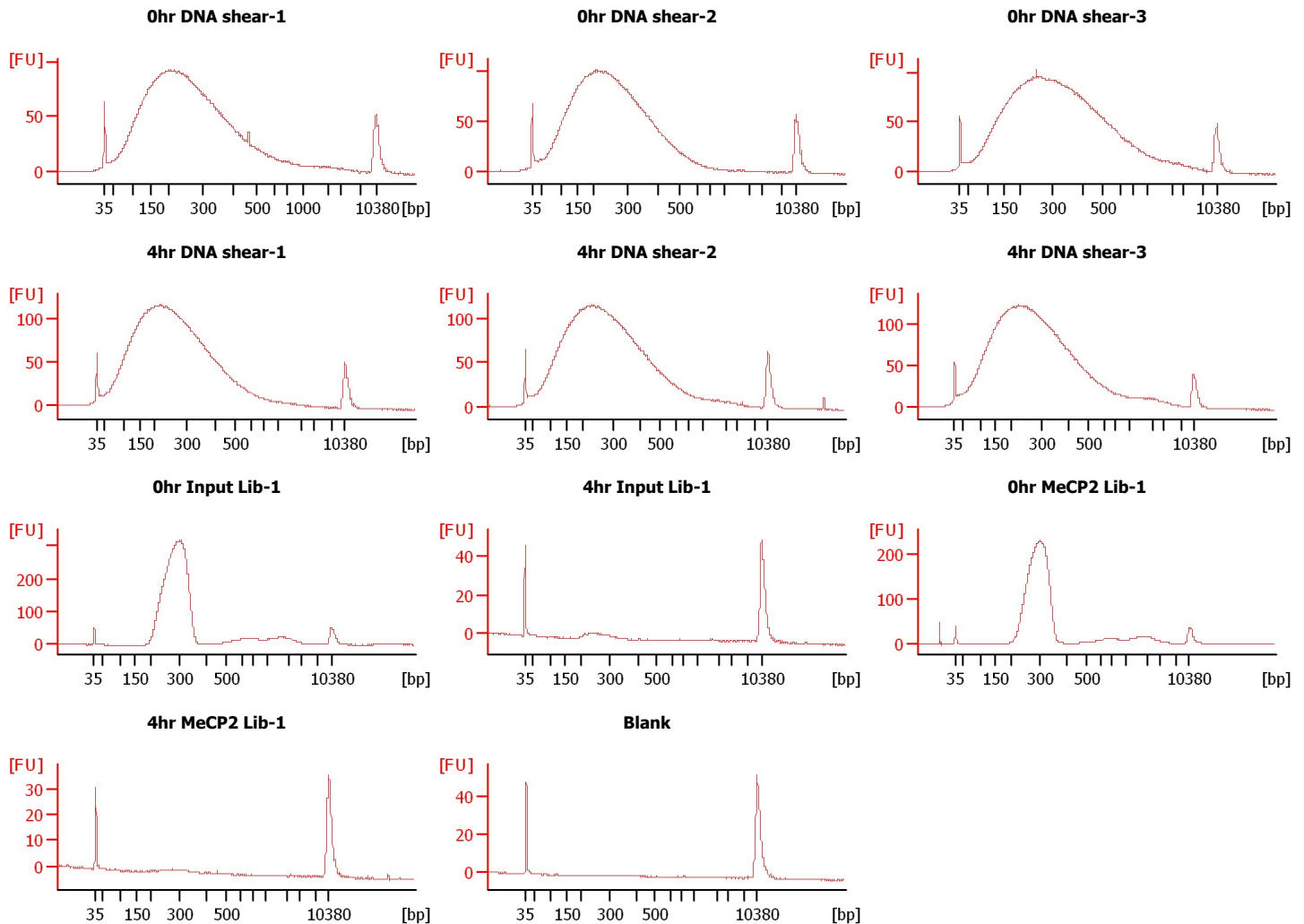
Instrument Name: DE13701086 Firmware: C.01.069
 Serial#: DE13701086 Type: G2938B

Assay Information:

Assay Origin Path: C:\Program Files\Agilent\2100 bioanalyzer\2100 expert\assays\dsDNA\High Sensitivity DNA.xsy
 Assay Class: High Sensitivity DNA Assay
 Version: 1.03
 Assay Comments: Copyright © 2003-2010 Agilent Technologies

Chip Information:

Chip Lot #:
 Reagent Kit Lot #:
 Chip Comments:



Assay Class: High Sensitivity DNA Assay
 Data Path: C:\...\Bioanalyzer\2012-04-02\2012-04-02_004_WoojefromGonglab.xad

Created: 4/2/2012 1:07:13 PM
 Modified: 4/2/2012 1:49:21 PM

Electrophoresis File Run Summary (Chip Summary)

Sample Name	Sample Comment	Rest. Digest	Status	Observation	Result Label	Result Color
0hr DNA shear-1		<input type="checkbox"/>	✓			
0hr DNA shear-2		<input type="checkbox"/>	✓			
0hr DNA shear-3		<input type="checkbox"/>	✓			
4hr DNA shear-1		<input type="checkbox"/>	✓			
4hr DNA shear-2		<input type="checkbox"/>	✓			
4hr DNA shear-3		<input type="checkbox"/>	✓			
0hr Input Lib-1		<input type="checkbox"/>	✓			
4hr Input Lib-1		<input type="checkbox"/>	✓			
0hr MeCP2 Lib-1		<input type="checkbox"/>	✓			
4hr MeCP2 Lib-1		<input type="checkbox"/>	✓			
Blank		<input type="checkbox"/>	✓			
Ladder		<input type="checkbox"/>	✓			

Chip Lot #

Reagent Kit Lot #

Chip Comments :

Assay Class: High Sensitivity DNA Assay
Data Path: C:\...\Bioanalyzer\2012-04-02\2012-04-02_004_WoojefromGonglab.xad

Created: 4/2/2012 1:07:13 PM
Modified: 4/2/2012 1:49:21 PM

Electrophoresis Assay Details

General Analysis Settings

Number of Available Sample and Ladder Wells (Max.) : 12
Minimum Visible Range [s] : 32
Maximum Visible Range [s] : 138
Start Analysis Time Range [s] : 33
End Analysis Time Range [s] : 137.5
Ladder Concentration [pg/μl] : 1950
Uses Standard Area for Ladder Fragments
Lower Marker Concentration [pg/μl] : 125
Upper Marker Concentration [pg/μl] : 75
Used Upper Marker for Quantitation
Standard Curve Fit is Point to Point
Show Data Aligned to Lower and Upper Marker

Integrator Settings

Integration Start Time [s] : 33.05
Integration End Time [s] : 137
Slope Threshold : 0.8
Height Threshold [FU] : 5
Area Threshold : 0.1
Width Threshold [s] : 0.6
Baseline Plateau [s] : 0.5

Filter Settings

Filter Width [s] : 0.5
Polynomial Order : 4

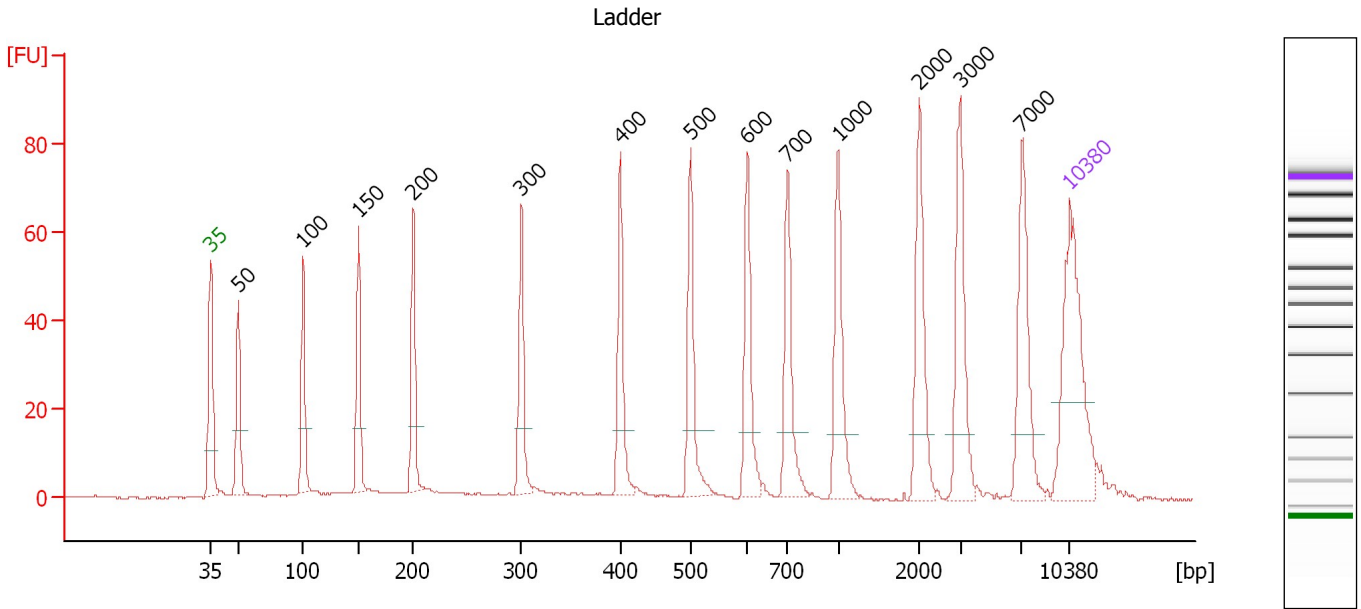
Ladder

Ladder Peak	Size	Area
1	35	160
2	50	210
3	100	208
4	150	221
5	200	242
6	300	270
7	400	305
8	500	306
9	600	336
10	700	321
11	1000	366
12	2000	413
13	3000	411
14	7000	400
15	10380	214

Assay Class: High Sensitivity DNA Assay
 Data Path: C:\...\Bioanalyzer\2012-04-02\2012-04-02_004_WoojefromGonglab.xad

Created: 4/2/2012 1:07:13 PM
 Modified: 4/2/2012 1:49:21 PM

Electropherogram Summary



Overall Results for Ladder

Noise: 0.2

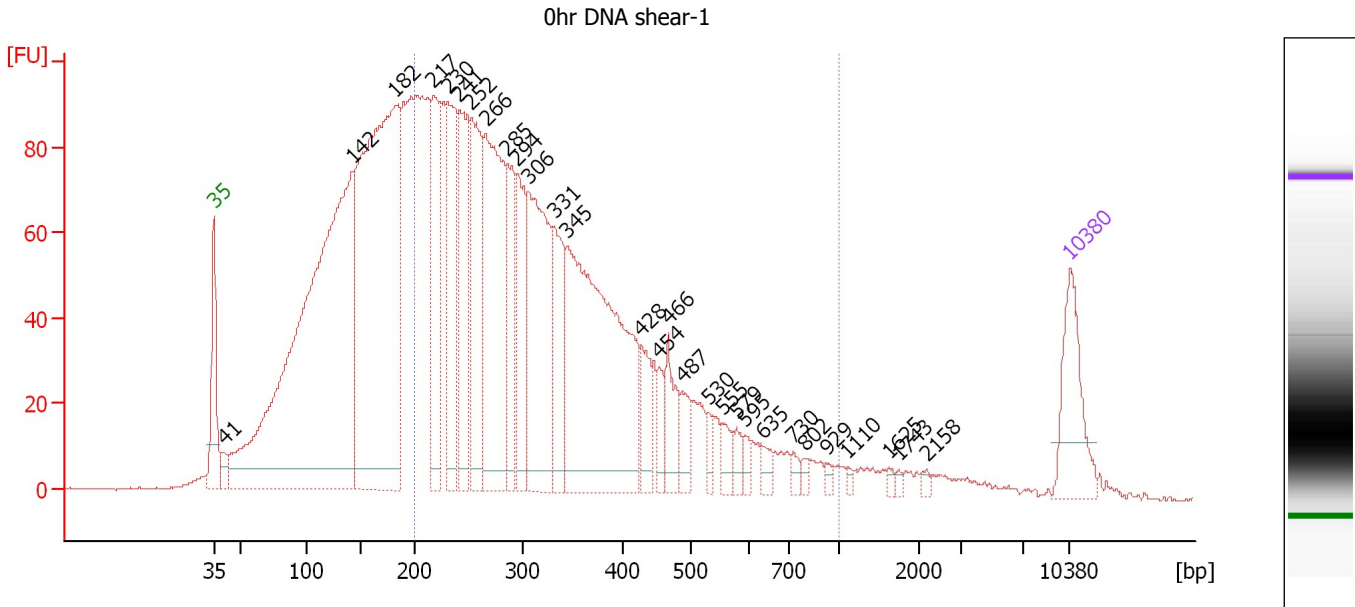
Peak table for Ladder

Peak	Size [bp]	Conc. [pg/μl]	Molarity [pmol/l]	Observations
1	35	125.00	5,411.3	Lower Marker
2	50	150.00	4,545.5	Ladder Peak
3	100	150.00	2,272.7	Ladder Peak
4	150	150.00	1,515.2	Ladder Peak
5	200	150.00	1,136.4	Ladder Peak
6	300	150.00	757.6	Ladder Peak
7	400	150.00	568.2	Ladder Peak
8	500	150.00	454.5	Ladder Peak
9	600	150.00	378.8	Ladder Peak
10	700	150.00	324.7	Ladder Peak
11	1,000	150.00	227.3	Ladder Peak
12	2,000	150.00	113.6	Ladder Peak
13	3,000	150.00	75.8	Ladder Peak
14	7,000	150.00	32.5	Ladder Peak
15	10,380	75.00	10.9	Upper Marker

Assay Class: High Sensitivity DNA Assay
 Data Path: C:\...\Bioanalyzer\2012-04-02\2012-04-02_004_WoojefromGonglab.xad

Created: 4/2/2012 1:07:13 PM
 Modified: 4/2/2012 1:49:21 PM

Electropherogram Summary Continued ...



Overall Results for sample 1 : 0hr DNA shear-1

Number of peaks found: 29 Corr. Area 1: 2,313.8
 Noise: 0.2

Peak table for sample 1 : 0hr DNA shear-1

Peak	Size [bp]	Conc. [pg/μl]	Molarity [pmol/l]	Observations
1	35	125.00	5,411.3	Lower Marker
2	41	21.20	791.0	
3	142	1,230.36	13,108.1	
4	182	929.51	7,742.7	
5	217	168.17	1,174.8	
6	230	209.28	1,377.3	
7	241	208.55	1,310.6	
8	252	223.34	1,343.0	
9	266	339.07	1,932.8	
10	285	124.16	659.9	
11	294	136.00	700.9	
12	306	279.86	1,386.5	
13	331	123.95	567.1	
14	345	530.24	2,327.3	
15	428	51.40	182.0	
16	454	28.27	94.4	
17	466	53.92	175.3	
18	487	33.21	103.3	
19	530	15.67	44.8	
20	555	21.42	58.5	
21	579	15.53	40.6	
22	595	10.92	27.8	
23	635	12.64	30.2	
24	730	9.94	20.6	
25	802	6.96	13.1	
26	929	5.90	9.6	

Assay Class: High Sensitivity DNA Assay
 Data Path: C:\...\Bioanalyzer\2012-04-02\2012-04-02_004_WoojefromGonglab.xad


Created: 4/2/2012 1:07:13 PM
 Modified: 4/2/2012 1:49:21 PM

Electropherogram Summary Continued ...

... Peak table for sample 1 : 0hr DNA shear-1

Peak	Size [bp]	Conc. [pg/μl]	Molarity [pmol/l]	Observations
27	1,110	4.29	5.9	
28	1,625	4.75	4.4	
29	1,743	3.13	2.7	
30	2,158	4.33	3.0	
31	10,380	75.00	10.9	Upper Marker

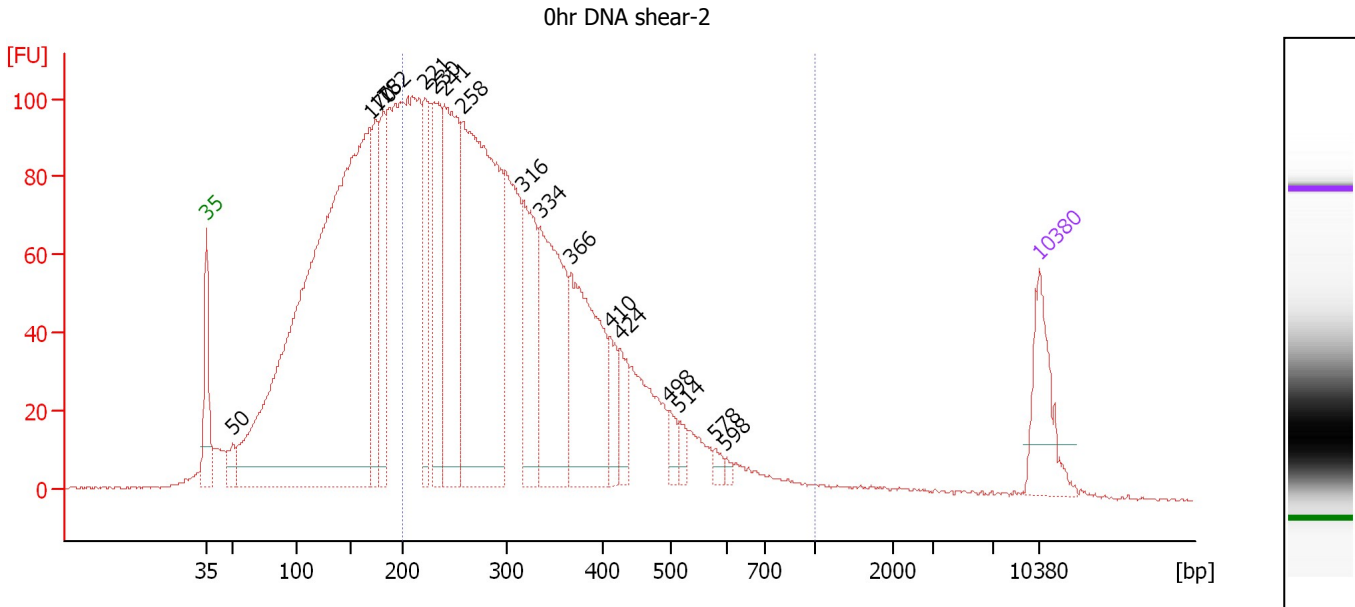
Region table for sample 1 : 0hr DNA shear-1

From [bp]	Molarity [pmol/l]	Average Size [bp]	Conc. [pg/μl]	To [bp]	Corr. Area	% of Total	Size distribution in CV [%]	Color
200	16,553.3	337	3,199.76	1,000	2,313.8	58	38.0	

Assay Class: High Sensitivity DNA Assay
 Data Path: C:\...\Bioanalyzer\2012-04-02\2012-04-02_004_WoojefromGonglab.xad

Created: 4/2/2012 1:07:13 PM
 Modified: 4/2/2012 1:49:21 PM

Electropherogram Summary Continued ...



Overall Results for sample 2 : 0hr DNA shear-2

Number of peaks found: 17 Corr. Area 1: 2,436.2
 Noise: 0.2

Peak table for sample 2 : 0hr DNA shear-2

Peak	Size [bp]	Conc. [pg/μl]	Molarity [pmol/l]	Observations
1	35	125.00	5,411.3	Lower Marker
2	50	30.78	935.2	
3	170	1,676.40	14,982.9	
4	175	154.76	1,343.1	
5	182	153.71	1,278.4	
6	221	142.56	976.3	
7	230	212.32	1,399.4	
8	241	342.72	2,158.7	
9	258	710.84	4,177.2	
10	316	177.15	849.1	
11	334	289.71	1,314.7	
12	366	267.10	1,105.6	
13	410	47.09	174.0	
14	424	48.97	174.9	
15	498	21.37	65.1	
16	514	17.10	50.4	
17	578	10.71	28.1	
18	598	6.16	15.6	
19	10,380	75.00	10.9	Upper Marker

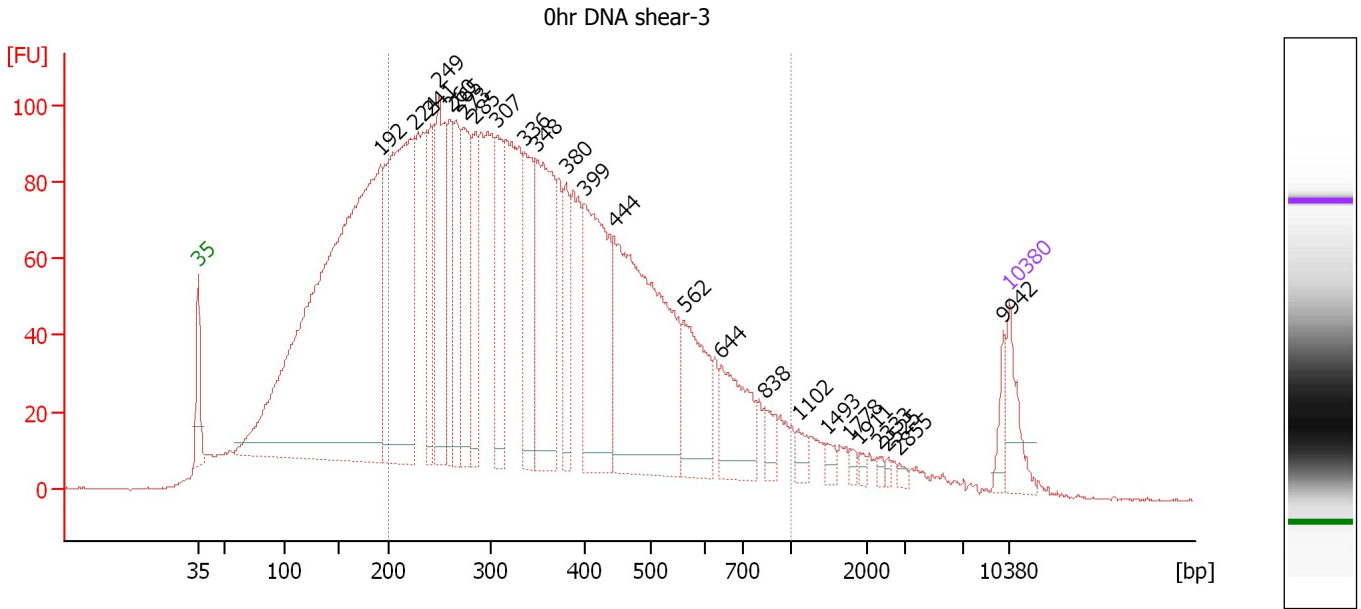
Region table for sample 2 : 0hr DNA shear-2

From [bp]	Molarity [pmol/l]	Average Size [bp]	Conc. [pg/μl]	To [bp]	Corr. Area	% of Total	Size distribution in CV [%]	Color
200	17,078.8	322	3,249.25	1,000	2,436.2	59	33.3	Blue

Assay Class: High Sensitivity DNA Assay
 Data Path: C:\...\Bioanalyzer\2012-04-02\2012-04-02_004_WoojefromGonglab.xad

Created: 4/2/2012 1:07:13 PM
 Modified: 4/2/2012 1:49:21 PM

Electropherogram Summary Continued ...



Overall Results for sample 3 : 0hr DNA shear-3

Number of peaks found: 25 Corr. Area 1: 3,293.9
 Noise: 0.3

Peak table for sample 3 : 0hr DNA shear-3

Peak	Size [bp]	Conc. [pg/μl]	Molarity [pmol/l]	Observations
1	35	125.00	5,411.3	Lower Marker
2	192	2,474.91	19,552.7	
3	224	985.75	6,665.0	
4	241	240.88	1,515.7	
5	249	383.78	2,338.9	
6	260	218.08	1,273.0	
7	265	213.86	1,221.3	
8	273	300.78	1,668.5	
9	285	213.81	1,138.2	
10	307	244.09	1,206.4	
11	336	278.92	1,259.3	
12	348	463.97	2,022.6	
13	380	144.47	576.0	
14	399	494.16	1,874.7	
15	444	848.20	2,891.9	
16	562	235.25	634.7	
17	644	186.19	438.0	
18	838	44.51	80.4	
19	1,102	29.33	40.3	
20	1,493	18.03	18.3	
21	1,778	11.19	9.5	
22	1,911	8.68	6.9	
23	2,333	8.18	5.3	
24	2,525	6.98	4.2	
25	2,855	7.92	4.2	
26	9,942	38.67	5.9	

Assay Class: High Sensitivity DNA Assay
 Data Path: C:\...\Bioanalyzer\2012-04-02\2012-04-02_004_WoojefromGonglab.xad


Created: 4/2/2012 1:07:13 PM
 Modified: 4/2/2012 1:49:21 PM

Electropherogram Summary Continued ...

... Peak table for sample 3 : 0hr DNA shear-3

Peak	Size [bp]	Conc. [pg/μl]	Molarity [pmol/l]	Observations
27	10,380	75.00	10.9	Upper Marker

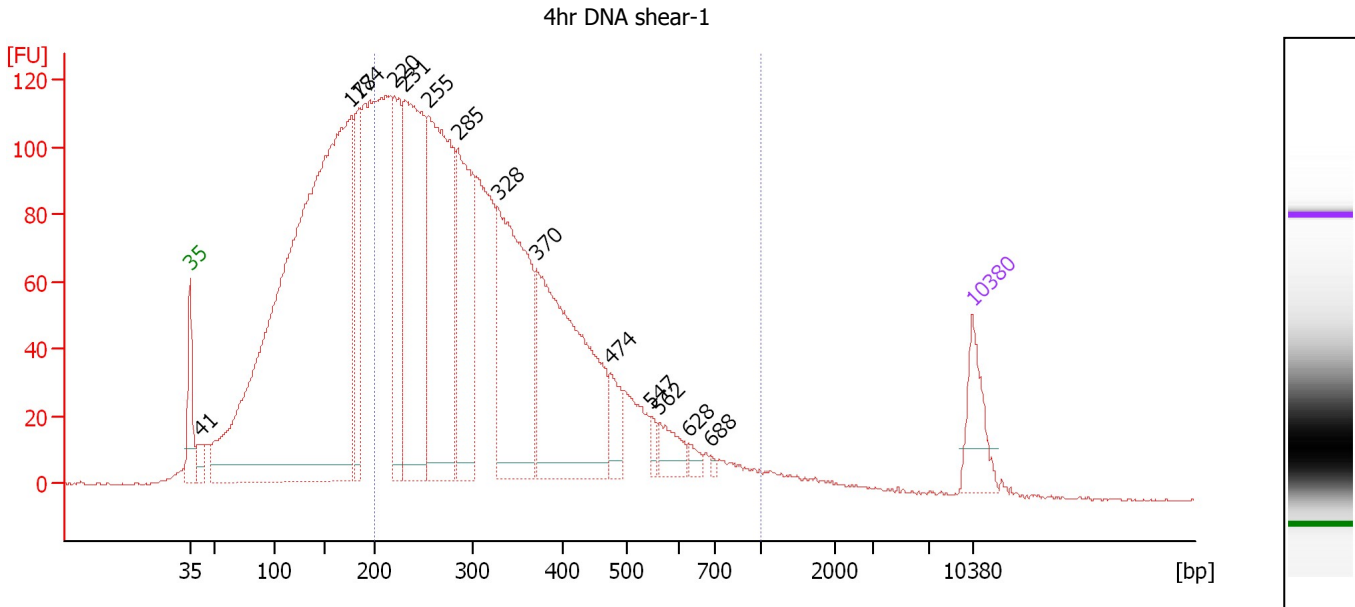
Region table for sample 3 : 0hr DNA shear-3

From [bp]	Molarity [pmol/l]	Average Size [bp]	Conc. [pg/μl]	To [bp]	Corr. Area	% of Total	Size distribution in CV [%]	Color
200	36,770.7	381	7,752.18	1,000	3,293.9	69	39.5	

Assay Class: High Sensitivity DNA Assay
 Data Path: C:\...\Bioanalyzer\2012-04-02\2012-04-02_004_WoojefromGonglab.xad

Created: 4/2/2012 1:07:13 PM
 Modified: 4/2/2012 1:49:21 PM

Electropherogram Summary Continued ...



Overall Results for sample 4 : 4hr DNA shear-1

Number of peaks found: 14 Corr. Area 1: 2,902.9
 Noise: 0.3

Peak table for sample 4 : 4hr DNA shear-1

Peak	Size [bp]	Conc. [pg/μl]	Molarity [pmol/l]	Observations
1	35	125.00	5,411.3	Lower Marker
2	41	42.24	1,543.7	
3	177	2,569.33	22,020.5	
4	184	240.74	1,978.9	
5	220	287.76	1,982.3	
6	231	683.84	4,489.9	
7	255	720.57	4,279.6	
8	285	392.58	2,088.1	
9	328	549.44	2,539.9	
10	370	619.41	2,534.6	
11	474	64.56	206.2	
12	547	17.90	49.6	
13	562	55.18	148.8	
14	628	16.80	40.6	
15	688	5.37	11.8	
16	10,380	75.00	10.9	Upper Marker

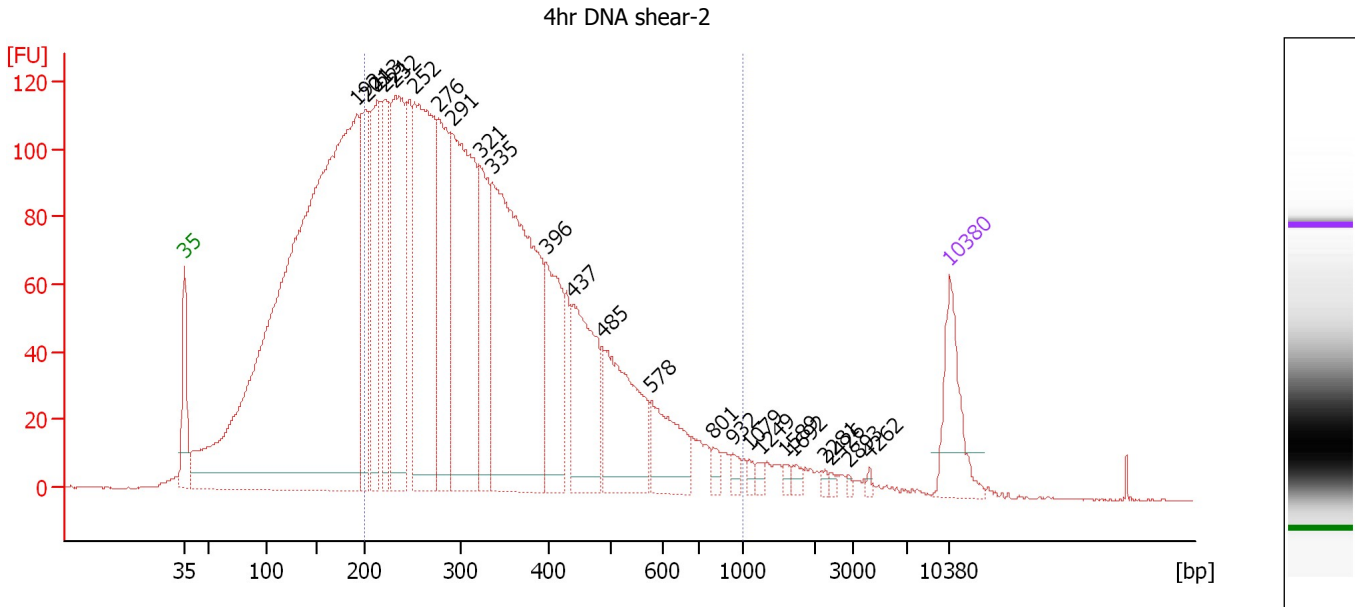
Region table for sample 4 : 4hr DNA shear-1

From [bp]	Molarity [pmol/l]	Average Size [bp]	Conc. [pg/μl]	To [bp]	Corr. Area	% of Total	Size distribution in CV [%]	Color
200	24,186.9	335	4,681.40	1,000	2,902.9	59	36.4	Blue

Assay Class: High Sensitivity DNA Assay
 Data Path: C:\...\Bioanalyzer\2012-04-02\2012-04-02_004_WoojefromGonglab.xad

Created: 4/2/2012 1:07:13 PM
 Modified: 4/2/2012 1:49:21 PM

Electropherogram Summary Continued ...



Overall Results for sample 5 : 4hr DNA shear-2

Number of peaks found: 24 Corr. Area 1: 3,246.7
 Noise: 0.2

Peak table for sample 5 : 4hr DNA shear-2

Peak	Size [bp]	Conc. [pg/μl]	Molarity [pmol/l]	Observations
1	35	125.00	5,411.3	Lower Marker
2	192	2,081.50	16,392.3	
3	201	202.50	1,525.0	
4	213	211.84	1,504.4	
5	221	173.41	1,188.4	
6	232	350.53	2,287.8	
7	252	514.01	3,089.9	
8	276	243.11	1,335.5	
9	291	475.91	2,475.5	
10	321	165.56	780.9	
11	335	650.72	2,942.1	
12	396	166.84	638.3	
13	437	193.91	672.0	
14	485	203.86	636.7	
15	578	96.12	251.9	
16	801	11.94	22.6	
17	932	11.74	19.1	
18	1,079	6.90	9.7	
19	1,249	7.35	8.9	
20	1,589	5.28	5.0	
21	1,692	7.90	7.1	
22	2,281	4.48	3.0	
23	2,426	3.31	2.1	
24	2,893	2.79	1.5	
25	4,262	3.29	1.2	
26	10,380	75.00	10.9	Upper Marker


Assay Class: High Sensitivity DNA Assay
Data Path: C:\...\Bioanalyzer\2012-04-02\2012-04-02_004_WoojefromGonglab.xad

Created: 4/2/2012 1:07:13 PM
Modified: 4/2/2012 1:49:21 PM

Electropherogram Summary Continued ...

... Region table for sample 5 :

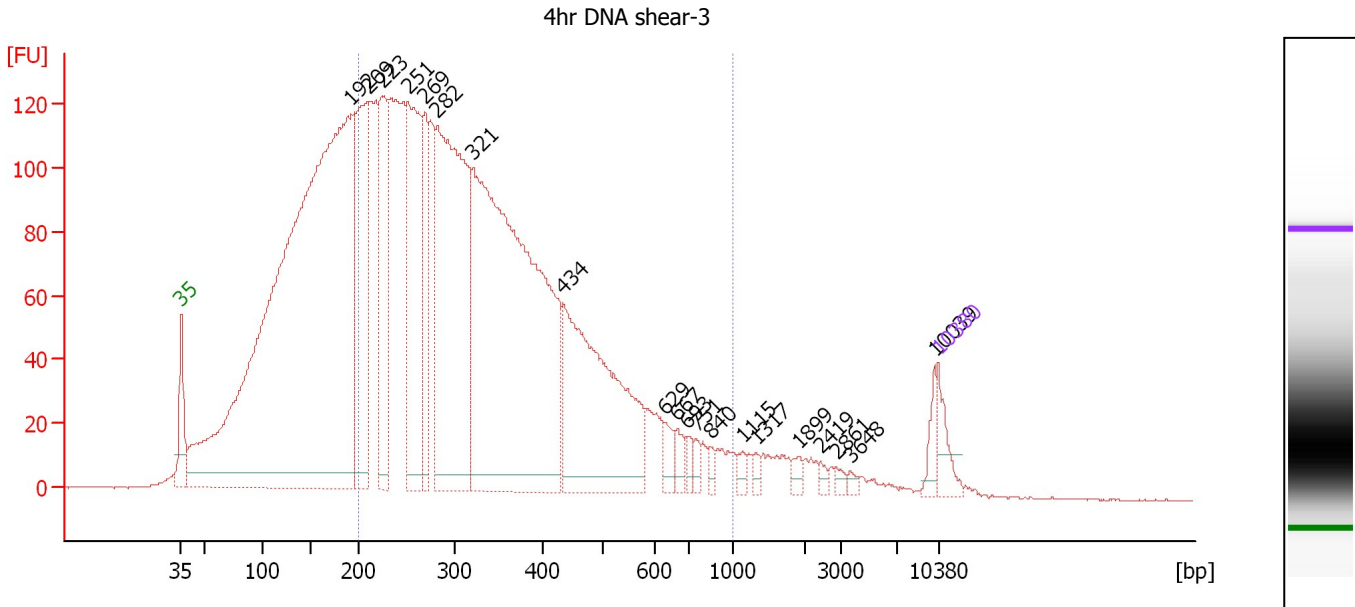
4hr DNA shear-2

From [bp]	Molarity [pmol/l]	Average Size [bp]	Conc. [pg/μl]	To [bp]	Corr. Area	% of Total	Size distribution in CV [%]	Co lor
200	19,594.6	350	3,904.54	1,000	3,246.7	63	37.8	

Assay Class: High Sensitivity DNA Assay
 Data Path: C:\...\Bioanalyzer\2012-04-02\2012-04-02_004_WoojefromGonglab.xad

Created: 4/2/2012 1:07:13 PM
 Modified: 4/2/2012 1:49:21 PM

Electropherogram Summary Continued ...



Overall Results for sample 6 : 4hr DNA shear-3

Number of peaks found: 20 Corr. Area 1: 3,380.9
 Noise: 0.2

Peak table for sample 6 : 4hr DNA shear-3

Peak	Size [bp]	Conc. [pg/μl]	Molarity [pmol/l]	Observations
1	35	125.00	5,411.3	Lower Marker
2	192	5,454.15	43,126.0	
3	209	877.96	6,367.7	
4	223	543.63	3,686.4	
5	251	899.88	5,436.0	
6	269	354.00	1,996.1	
7	282	1,621.46	8,725.6	
8	321	2,771.91	13,069.5	
9	434	1,077.27	3,762.4	
10	629	54.76	131.9	
11	667	48.96	111.2	
12	693	33.44	73.1	
13	751	28.62	57.8	
14	840	23.79	42.9	
15	1,115	23.15	31.4	
16	1,317	19.27	22.2	
17	1,899	22.35	17.8	
18	2,419	15.82	9.9	
19	2,861	15.15	8.0	
20	3,648	13.31	5.5	
21	10,039	45.41	6.9	
22	10,380	75.00	10.9	Upper Marker

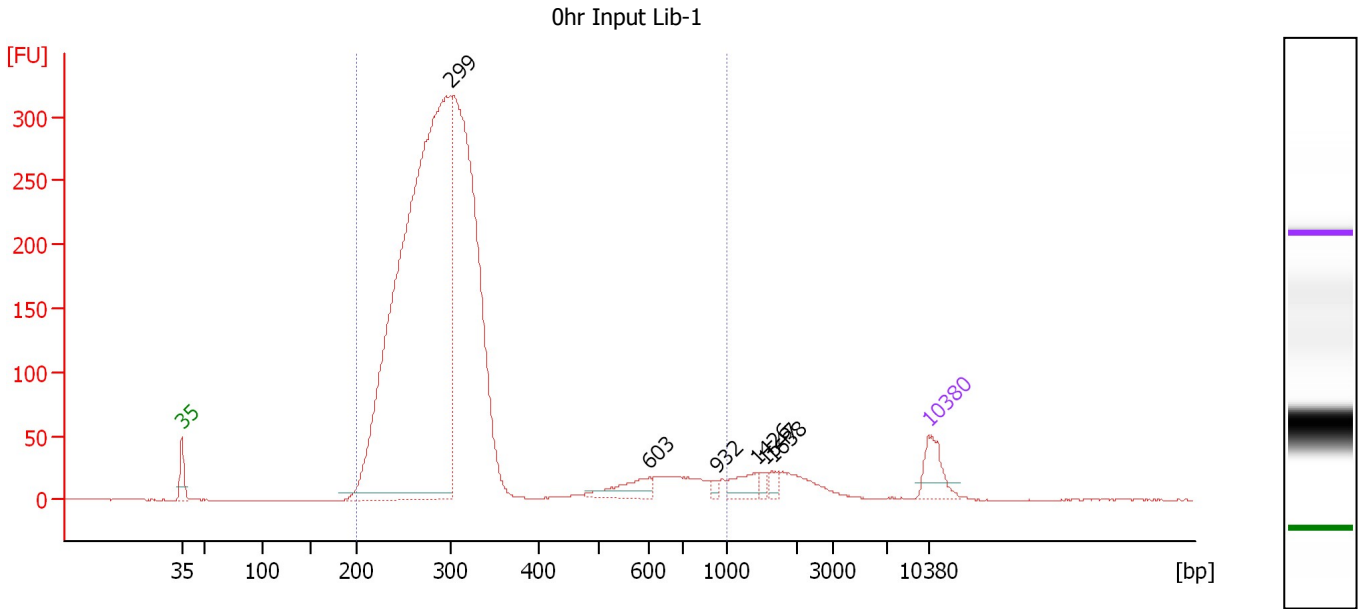
Region table for sample 6 : 4hr DNA shear-3

From [bp]	Molarity [pmol/l]	Average Size [bp]	Conc. [pg/μl]	To [bp]	Corr. Area	% of Total	Size distribution in CV [%]	Color
200	49,639.8	350	9,867.43	1,000	3,380.9	62	38.5	Blue

Assay Class: High Sensitivity DNA Assay
 Data Path: C:\...\Bioanalyzer\2012-04-02\2012-04-02_004_WoojefromGonglab.xad

Created: 4/2/2012 1:07:13 PM
 Modified: 4/2/2012 1:49:21 PM

Electropherogram Summary Continued ...



Overall Results for sample 7 : Ohr Input Lib-1

Number of peaks found: 6 Corr. Area 1: 4,103.0
 Noise: 0.2

Peak table for sample 7 : Ohr Input Lib-1

Peak	Size [bp]	Conc. [pg/μl]	Molarity [pmol/l]	Observations
1	35	125.00	5,411.3	Lower Marker
2	299	3,531.48	17,907.9	
3	603	77.54	194.8	
4	932	12.83	20.9	
5	1,426	52.31	55.6	
6	1,547	13.16	12.9	
7	1,638	19.30	17.9	
8	10,380	75.00	10.9	Upper Marker

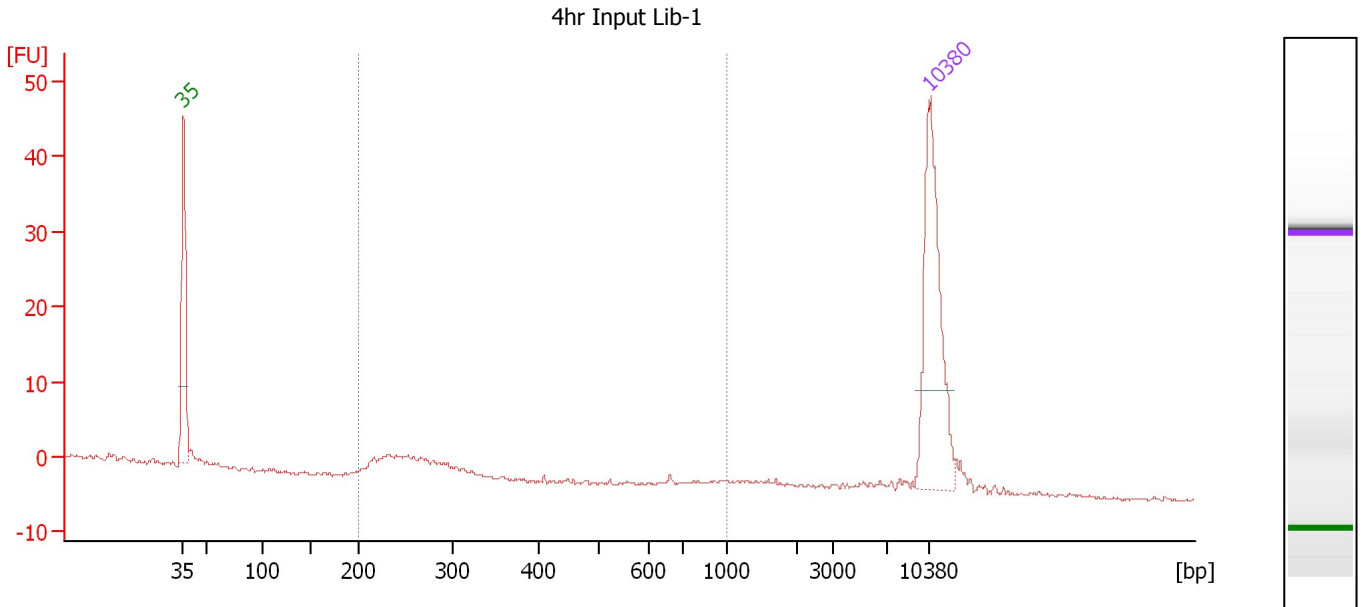
Region table for sample 7 : Ohr Input Lib-1

From [bp]	Molarity [pmol/l]	Average Size [bp]	Conc. [pg/μl]	To [bp]	Corr. Area	% of Total	Size distribution in CV [%]	Color
200	30,672.7	312	5,820.49	1,000	4,103.0	95	35.8	Blue

Assay Class: High Sensitivity DNA Assay
 Data Path: C:\...\Bioanalyzer\2012-04-02\2012-04-02_004_WoojefromGonglab.xad

Created: 4/2/2012 1:07:13 PM
 Modified: 4/2/2012 1:49:21 PM

Electropherogram Summary Continued ...



Overall Results for sample 8 : 4hr Input Lib-1

Number of peaks found: 0 Corr. Area 1: 18.3
 Noise: 0.2

Peak table for sample 8 : 4hr Input Lib-1

Peak	Size [bp]	Conc. [pg/μl]	Molarity [pmol/l]	Observations
1	35	125.00	5,411.3	Lower Marker
2	10,380	75.00	10.9	Upper Marker

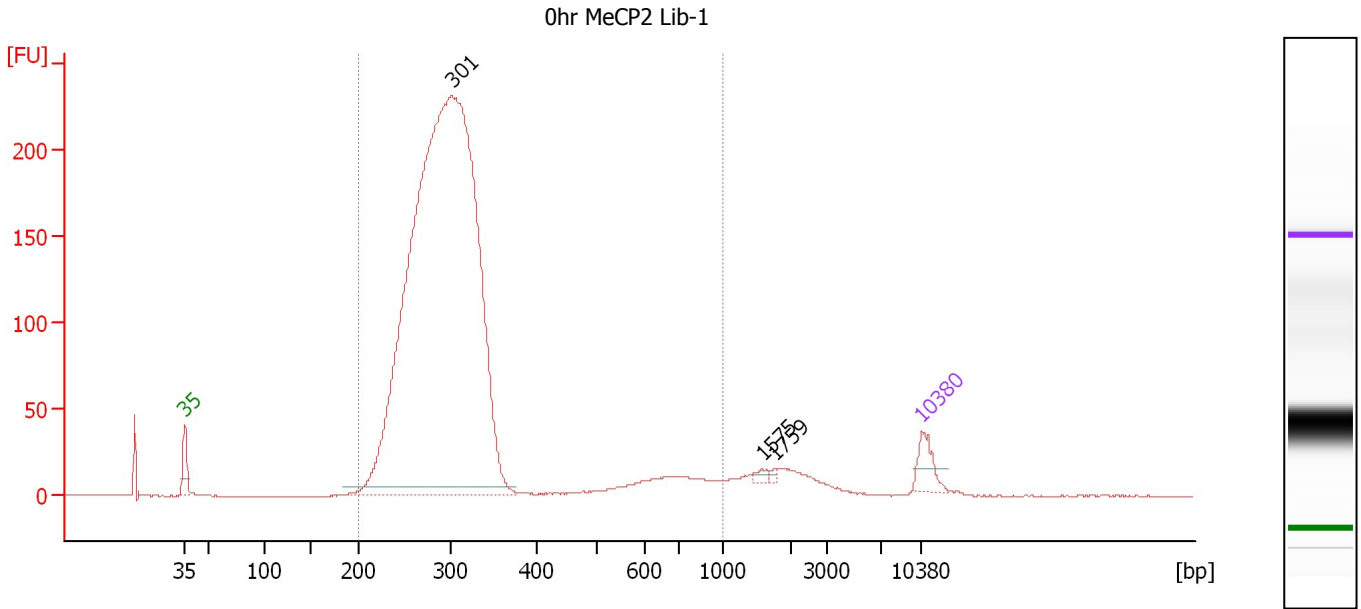
Region table for sample 8 : 4hr Input Lib-1

From [bp]	Molarity [pmol/l]	Average Size [bp]	Conc. [pg/μl]	To [bp]	Corr. Area	% of Total	Size distribution in CV [%]	Color
200	168.6	269	28.59	1,000	18.3	57	34.0	Blue

Assay Class: High Sensitivity DNA Assay
 Data Path: C:\...\Bioanalyzer\2012-04-02\2012-04-02_004_WoojefromGonglab.xad

Created: 4/2/2012 1:07:13 PM
 Modified: 4/2/2012 1:49:21 PM

Electropherogram Summary Continued ...



Overall Results for sample 9 : 0hr MeCP2 Lib-1

Number of peaks found: 3 Corr. Area 1: 2,677.8
 Noise: 0.2

Peak table for sample 9 : 0hr MeCP2 Lib-1

Peak	Size [bp]	Conc. [pg/μl]	Molarity [pmol/l]	Observations
1	35	125.00	5,411.3	Lower Marker
2	301	6,215.08	31,252.6	
3	1,575	17.18	16.5	
4	1,759	10.14	8.7	
5	10,380	75.00	10.9	Upper Marker

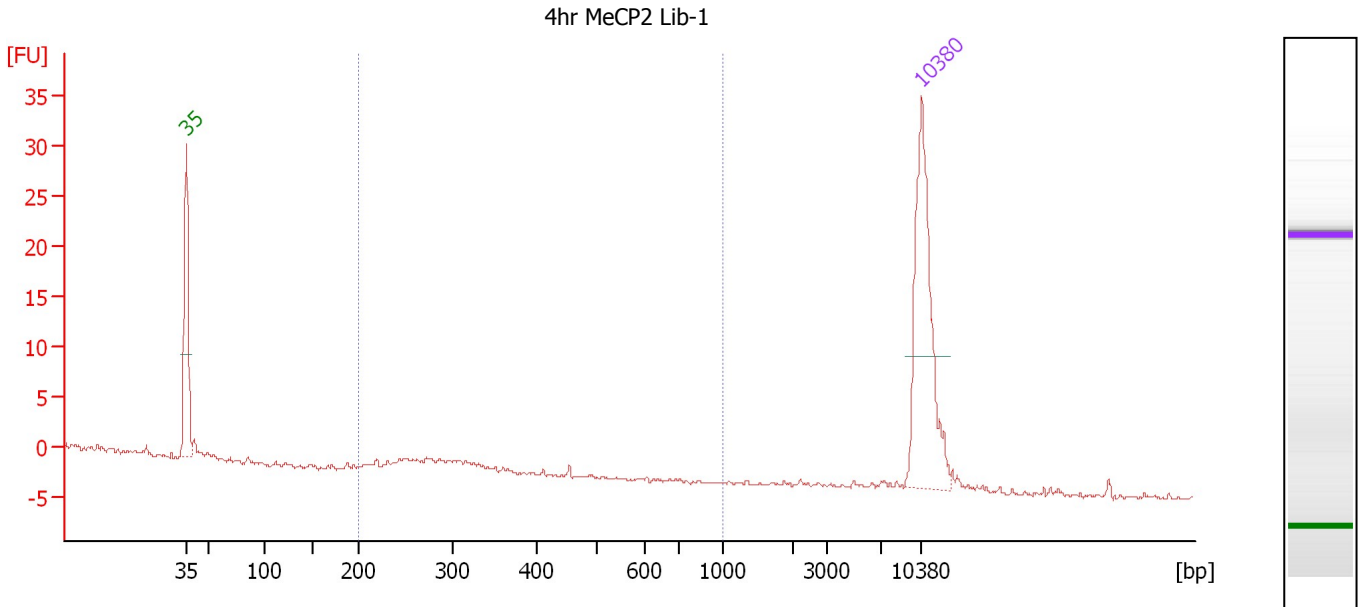
Region table for sample 9 : 0hr MeCP2 Lib-1

From [bp]	Molarity [pmol/l]	Average Size [bp]	Conc. [pg/μl]	To [bp]	Corr. Area	% of Total	Size distribution in CV [%]	Color
200	34,321.7	314	6,652.58	1,000	2,677.8	94	32.8	Blue

Assay Class: High Sensitivity DNA Assay
 Data Path: C:\...\Bioanalyzer\2012-04-02\2012-04-02_004_WoojefromGonglab.xad

Created: 4/2/2012 1:07:13 PM
 Modified: 4/2/2012 1:49:21 PM

Electropherogram Summary Continued ...



Overall Results for sample 10 : 4hr MeCP2 Lib-1

Number of peaks found: 0 Corr. Area 1: 2.9
 Noise: 0.1

Peak table for sample 10 : 4hr MeCP2 Lib-1

Peak	Size [bp]	Conc. [pg/μl]	Molarity [pmol/l]	Observations
1	35	125.00	5,411.3	Lower Marker
2	10,380	75.00	10.9	Upper Marker

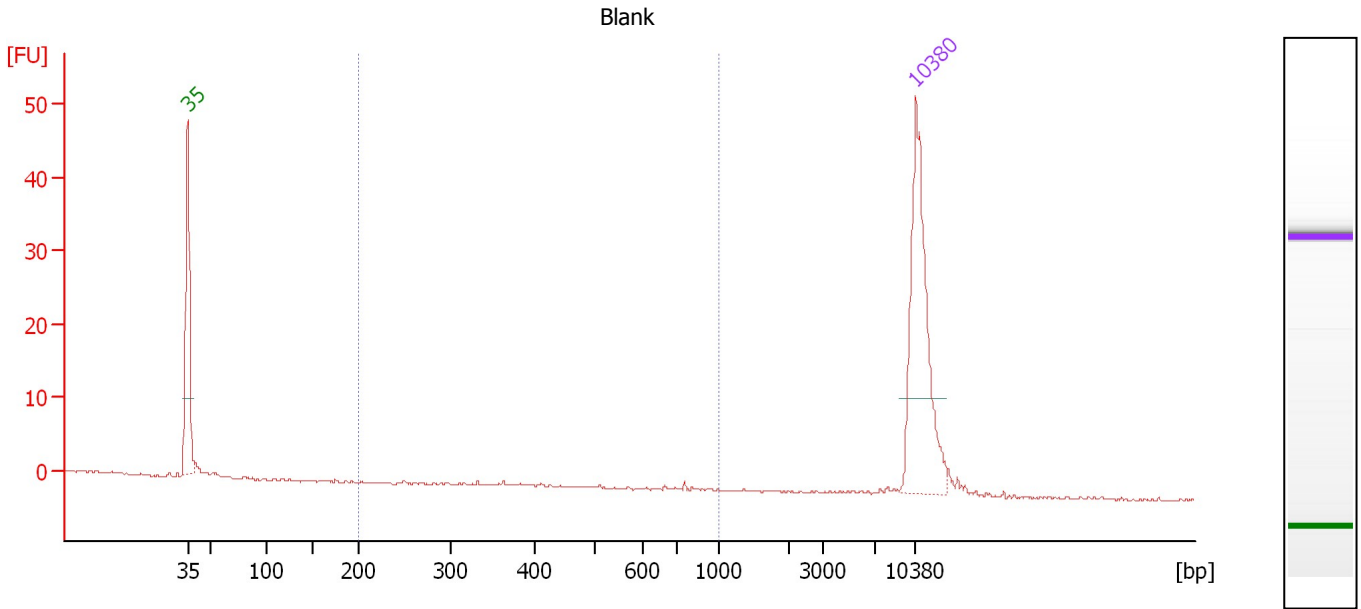
Region table for sample 10 : 4hr MeCP2 Lib-1

From [bp]	Molarity [pmol/l]	Average Size [bp]	Conc. [pg/μl]	To [bp]	Corr. Area	% of Total	Size distribution in CV [%]	Color
200	31.3	289	5.88	1,000	2.9	45	12.5	Blue

Assay Class: High Sensitivity DNA Assay
 Data Path: C:\...\Bioanalyzer\2012-04-02\2012-04-02_004_WoojefromGonglab.xad

Created: 4/2/2012 1:07:13 PM
 Modified: 4/2/2012 1:49:21 PM

Electropherogram Summary Continued ...



Overall Results for sample 11 : Blank

Number of peaks found: 0 Corr. Area 1: 0.2
 Noise: 0.1

Peak table for sample 11 : Blank

Peak	Size [bp]	Conc. [pg/μl]	Molarity [pmol/l]	Observations
1	35	125.00	5,411.3	Lower Marker
2	10,380	75.00	10.9	Upper Marker

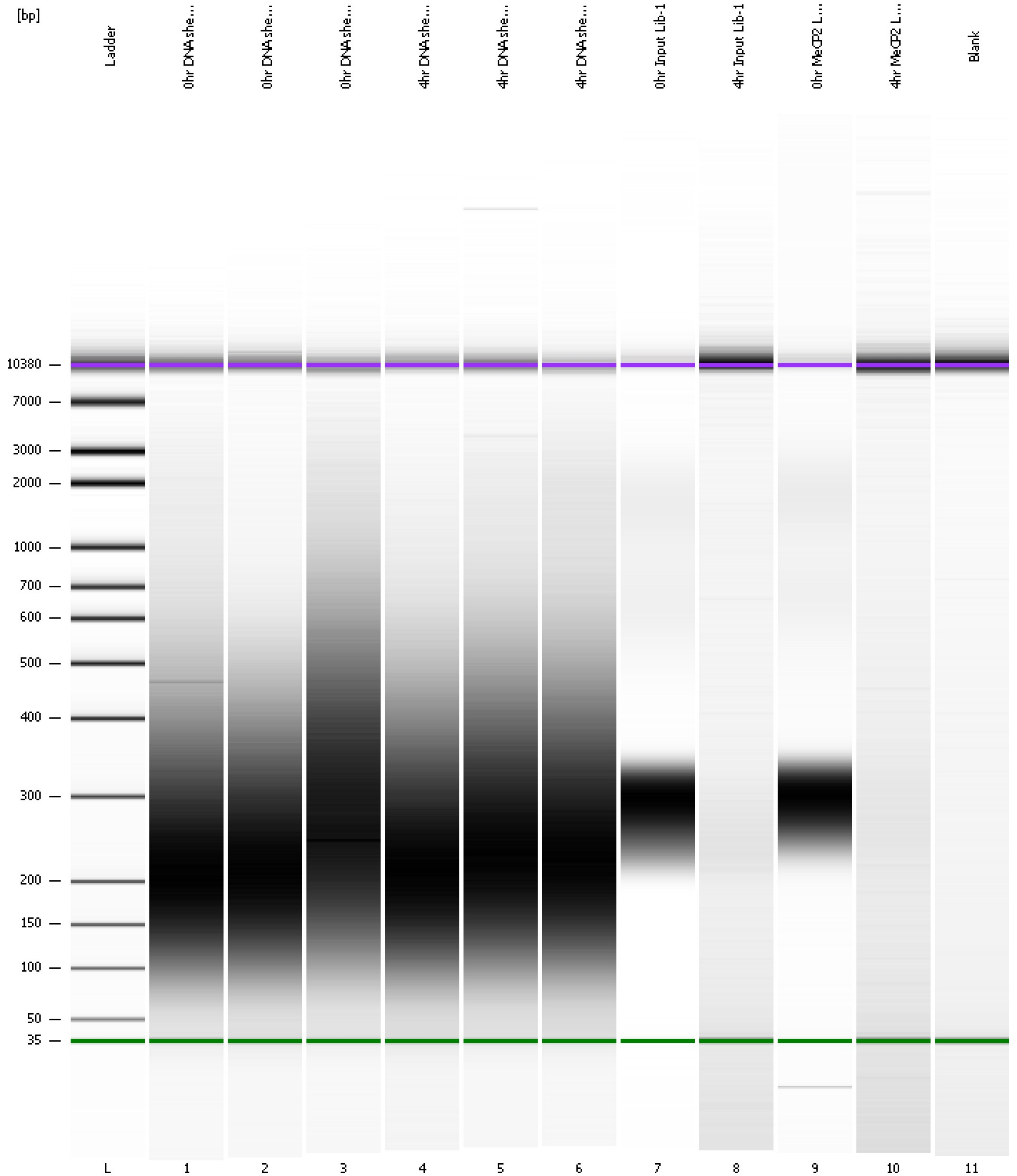
Region table for sample 11 : Blank

From [bp]	Molarity [pmol/l]	Average Size [bp]	Conc. [pg/μl]	To [bp]	Corr. Area	% of Total	Size distribution in CV [%]	Color
200	0.6	702	0.24	1,000	0.2	3	19.1	Blue

Assay Class: High Sensitivity DNA Assay
Data Path: C:\...\Bioanalyzer\2012-04-02\2012-04-02_004_WoojefromGonglab.xad

Created: 4/2/2012 1:07:13 PM
Modified: 4/2/2012 1:49:21 PM

Gel Image



Assay Class: High Sensitivity DNA Assay Created: 4/2/2012 1:07:13 PM
 Data Path: C:\...\Bioanalyzer\2012-04-02\2012-04-02_004_WoojefromGonglab.xad Modified: 4/2/2012 1:49:21 PM

Run Logbook

Description	Number	Source	Category	Sub Category	Time	Time Zone	User	Host
Run ended on port 1 (Number of wells acquired: 12)		Instrument	Run		4/2/2012 1:48:31 PM	(GMT --07:00) Pacific Standard Time	UC Davis	D8XSMGH1
Run started on port 1 (File: C:\Documents and Settings\Bioanalyzer\2012-04-02\2012-04-02_004.xad)		Instrument	Run		4/2/2012 1:07:18 PM	(GMT --07:00) Pacific Standard Time	UC Davis	D8XSMGH1
Product Number : G2938B		Instrument	Run		4/2/2012 1:07:18 PM	(GMT --07:00) Pacific Standard Time	UC Davis	D8XSMGH1
Name :		Instrument	Run		4/2/2012 1:07:18 PM	(GMT --07:00) Pacific Standard Time	UC Davis	D8XSMGH1
Vendor : Agilent Technologies		Instrument	Run		4/2/2012 1:07:18 PM	(GMT --07:00) Pacific Standard Time	UC Davis	D8XSMGH1
Serial# : DE13701086		Instrument	Run		4/2/2012 1:07:18 PM	(GMT --07:00) Pacific Standard Time	UC Davis	D8XSMGH1
Firmware : C.01.069		Instrument	Run		4/2/2012 1:07:18 PM	(GMT --07:00) Pacific Standard Time	UC Davis	D8XSMGH1
Cartridge : Electrode		Instrument	Run		4/2/2012 1:07:18 PM	(GMT --07:00) Pacific Standard Time	UC Davis	D8XSMGH1