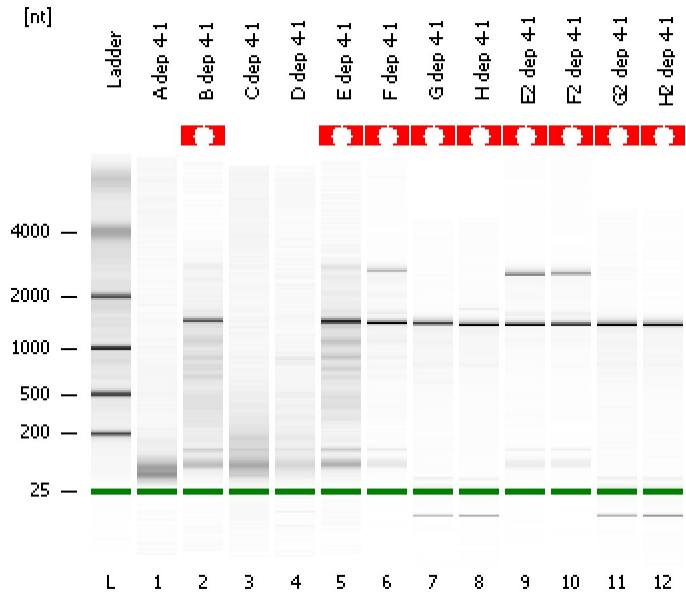


Assay Class: Prokaryote Total RNA Nano
Data Path: C:\...ettings\Bioanalyzer\2012-04-03\2012-04-03_001_ErinLynch.xad

Created: 4/3/2012 10:25:06 AM
Modified: 4/3/2012 11:05:03 AM

Electrophoresis File Run Summary



Instrument Information:

Instrument Name: DE13701086 Firmware: C.01.069
Serial#: DE13701086 Type: G2938B

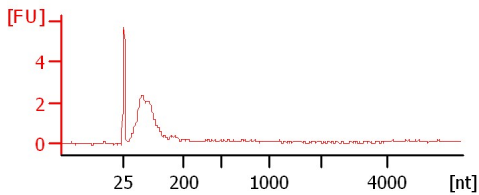
Assay Information:

Assay Origin Path: C:\Program Files\Agilent\2100 bioanalyzer\2100 expert\assays\RNA\Prokaryote Total RNA Nano Series II.xsy
Assay Class: Prokaryote Total RNA Nano
Version: 2.5
Assay Comments: Total RNA Analysis ng sensitivity (Prokaryote)
© Copyright 2003 - 2009 Agilent Technologies, Inc.

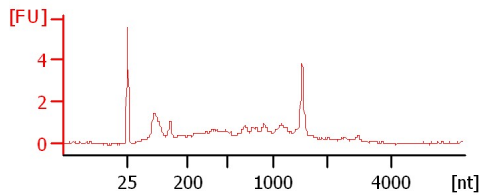
Chip Information:

Chip Lot #:
Reagent Kit Lot #:
Chip Comments:

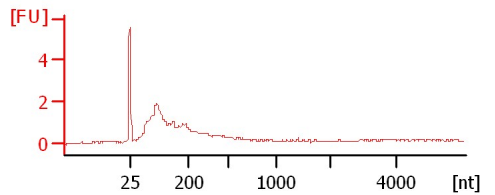
A dep 4-1



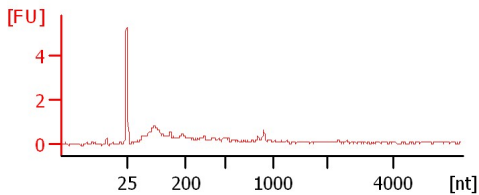
B dep 4-1



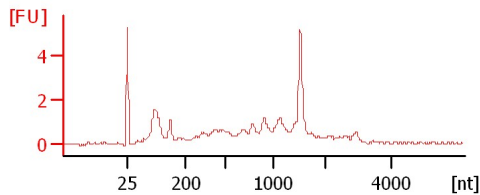
C dep 4-1



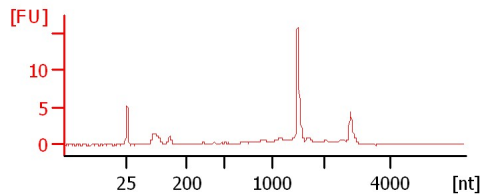
D dep 4-1



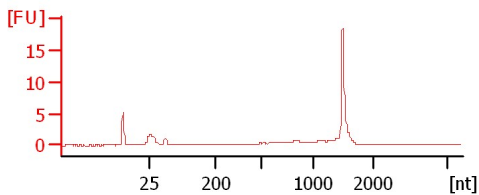
E dep 4-1



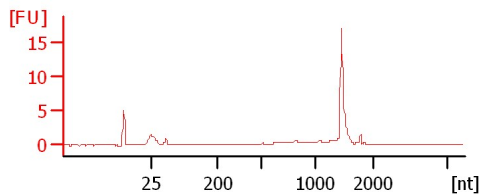
F dep 4-1



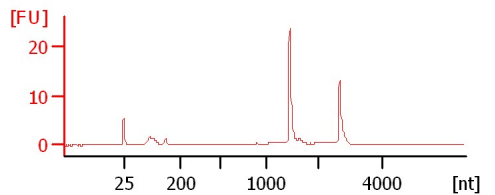
G dep 4-1



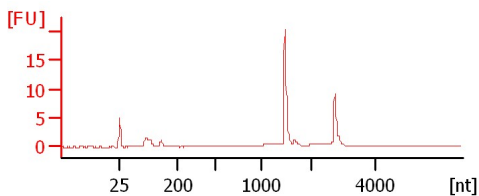
H dep 4-1



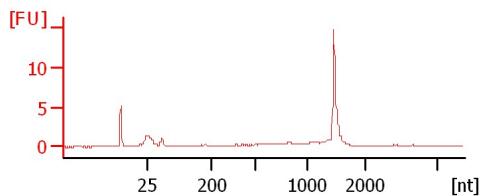
E2 dep 4-1



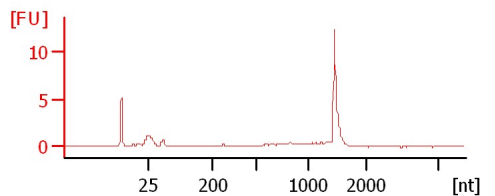
F2 dep 4-1



G2 dep 4-1



H2 dep 4-1



Assay Class: Prokaryote Total RNA Nano
Data Path: C:\...ettings\Bioanalyzer\2012-04-03\2012-04-03_001_ErinLynch.xad

Created: 4/3/2012 10:25:06 AM
Modified: 4/3/2012 11:05:03 AM

Electrophoresis File Run Summary (Chip Summary)

Sample Name	Sample Comment	Status	Result Label	Result Color
A dep 4-1		✓		
B dep 4-1		✓		
C dep 4-1		✓		
D dep 4-1		✓		
E dep 4-1		✓		
F dep 4-1		✓		
G dep 4-1		✓		
H dep 4-1		✓		
E2 dep 4-1		✓		
F2 dep 4-1		✓		
G2 dep 4-1		✓		
H2 dep 4-1		✓		
Ladder		✓		

Chip Lot #**Reagent Kit Lot #****Chip Comments :**

Assay Class: Prokaryote Total RNA Nano
Data Path: C:\...ettings\Bioanalyzer\2012-04-03\2012-04-03_001_ErinLynch.xad

Created: 4/3/2012 10:25:06 AM
Modified: 4/3/2012 11:05:03 AM

Electrophoresis Assay Details

General Analysis Settings

Number of Available Sample and Ladder Wells (Max.) : 13
Minimum Visible Range [s] : 17
Maximum Visible Range [s] : 70
Start Analysis Time Range [s] : 19
End Analysis Time Range [s] : 69
Ladder Concentration [ng/μl] : 150
Lower Marker Concentration [ng/μl] : 0
Upper Marker Concentration [ng/μl] : 0
Used Lower Marker for Quantitation
Standard Curve Fit is Logarithmic
Show Data Aligned to Lower Marker

Integrator Settings

Integration Start Time [s] : 19
Integration End Time [s] : 69
Slope Threshold : 0.6
Height Threshold [FU] : 0.5
Area Threshold : 0.2
Width Threshold [s] : 0.5
Baseline Plateau [s] : 6

Filter Settings

Filter Width [s] : 0.5
Polynomial Order : 4

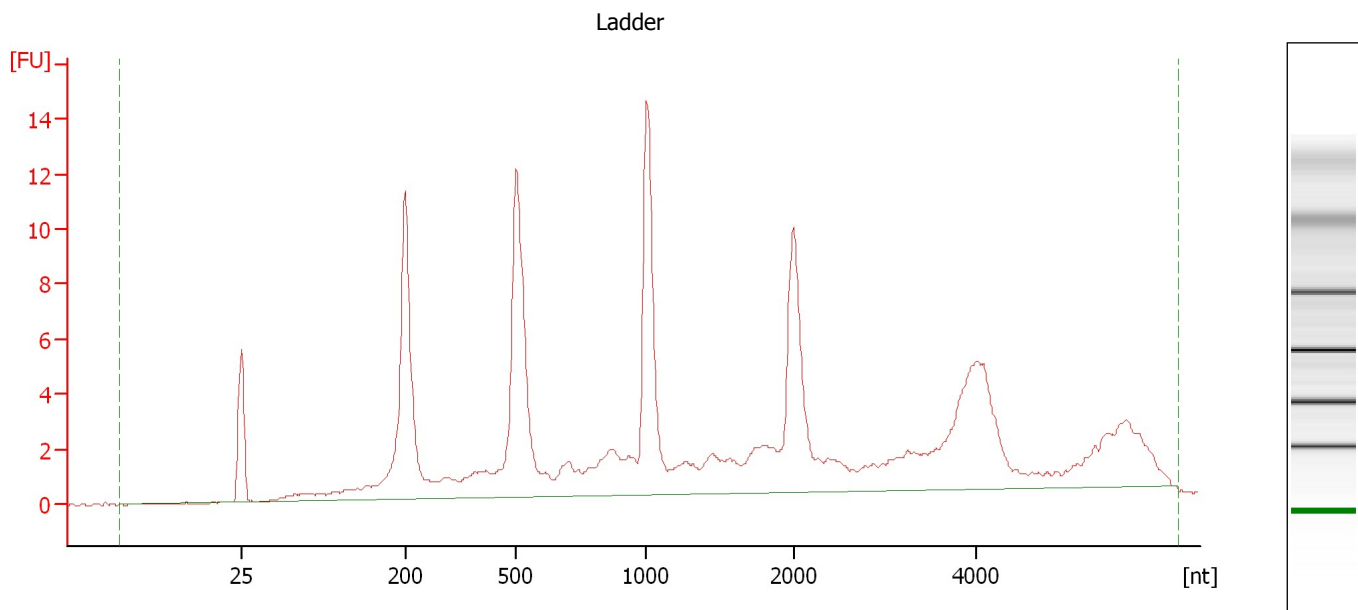
Ladder

Ladder Peak	Size
1	25
2	200
3	500
4	1000
5	2000
6	4000

Assay Class: Prokaryote Total RNA Nano
Data Path: C:\...ettings\Bioanalyzer\2012-04-03\2012-04-03_001_ErinLynch.xad

Created: 4/3/2012 10:25:06 AM
Modified: 4/3/2012 11:05:03 AM

Electropherogram Summary



Overall Results for Ladder

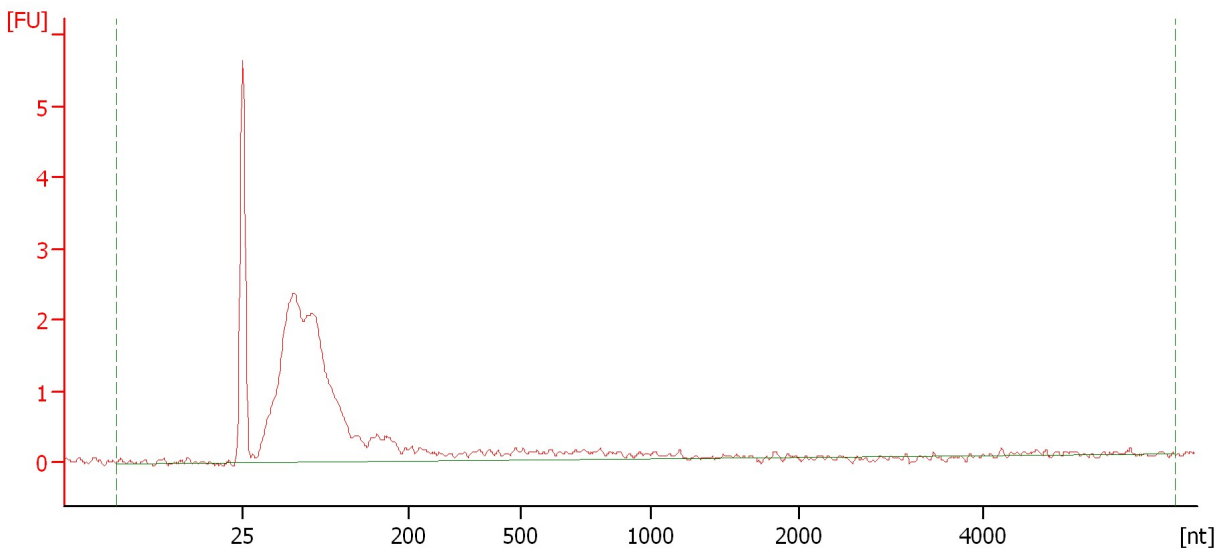
RNA Area: 156.1 RNA Concentration: 150 ng/μl

Assay Class: Prokaryote Total RNA Nano
Data Path: C:\...ettings\Bioanalyzer\2012-04-03\2012-04-03_001_ErinLynch.xad

Created: 4/3/2012 10:25:06 AM
Modified: 4/3/2012 11:05:03 AM

Electropherogram Summary Continued ...

A dep 4-1



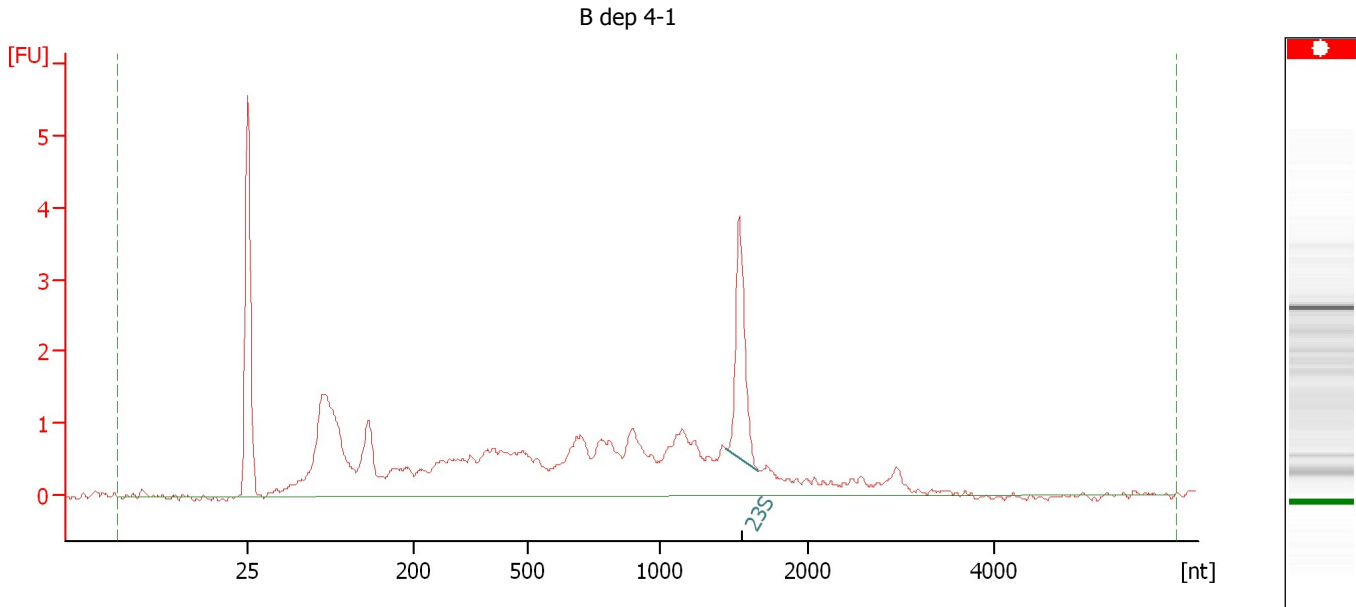
Overall Results for sample 1 : A dep 4-1

RNA Area:	26.7	rRNA Ratio [23s / 16s]:	0.0
RNA Concentration:	26 ng/μl	RNA Integrity Number (RIN):	2.5 (B.02.08)

Assay Class: Prokaryote Total RNA Nano
Data Path: C:\...ettings\Bioanalyzer\2012-04-03\2012-04-03_001_ErinLynch.xad

Created: 4/3/2012 10:25:06 AM
Modified: 4/3/2012 11:05:03 AM

Electropherogram Summary Continued ...



Overall Results for sample 2 : B dep 4-1

RNA Area: 40.4 rRNA Ratio [23s / 16s]: 0.0
RNA Concentration: 39 ng/μl RNA Integrity Number (RIN): N/A (B.02.08)

Fragment table for sample 2 : B dep 4-1

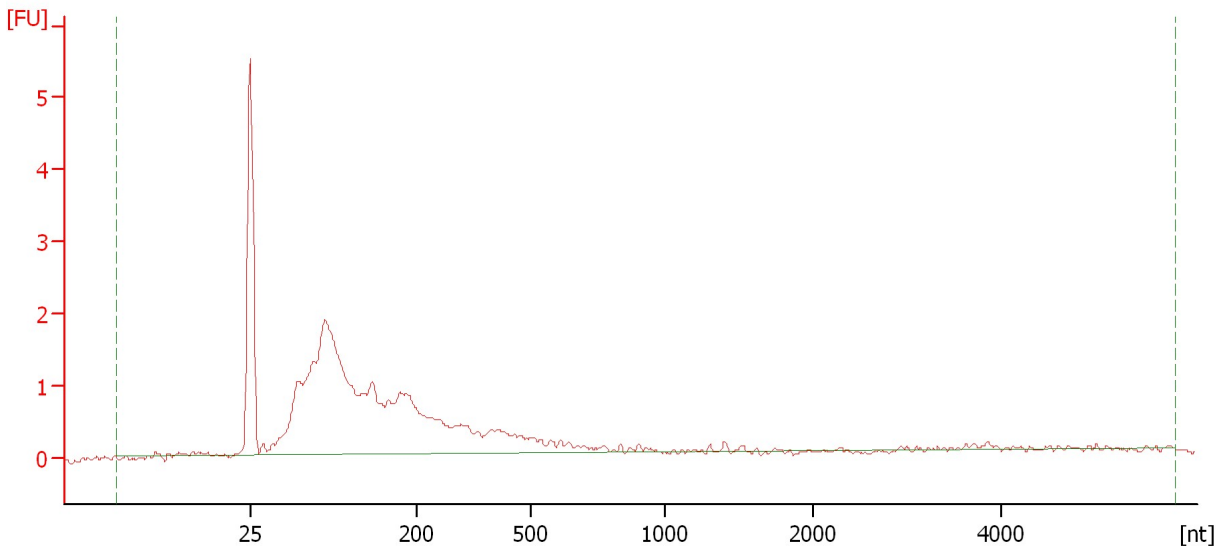
Name	Start Size [nt]	End Size [nt]	Area	% of total Area
23S	1,445	1,660	3.3	8.2

Assay Class: Prokaryote Total RNA Nano
Data Path: C:\...ettings\Bioanalyzer\2012-04-03\2012-04-03_001_ErinLynch.xad

Created: 4/3/2012 10:25:06 AM
Modified: 4/3/2012 11:05:03 AM

Electropherogram Summary Continued ...

C dep 4-1



Overall Results for sample 3 : C dep 4-1

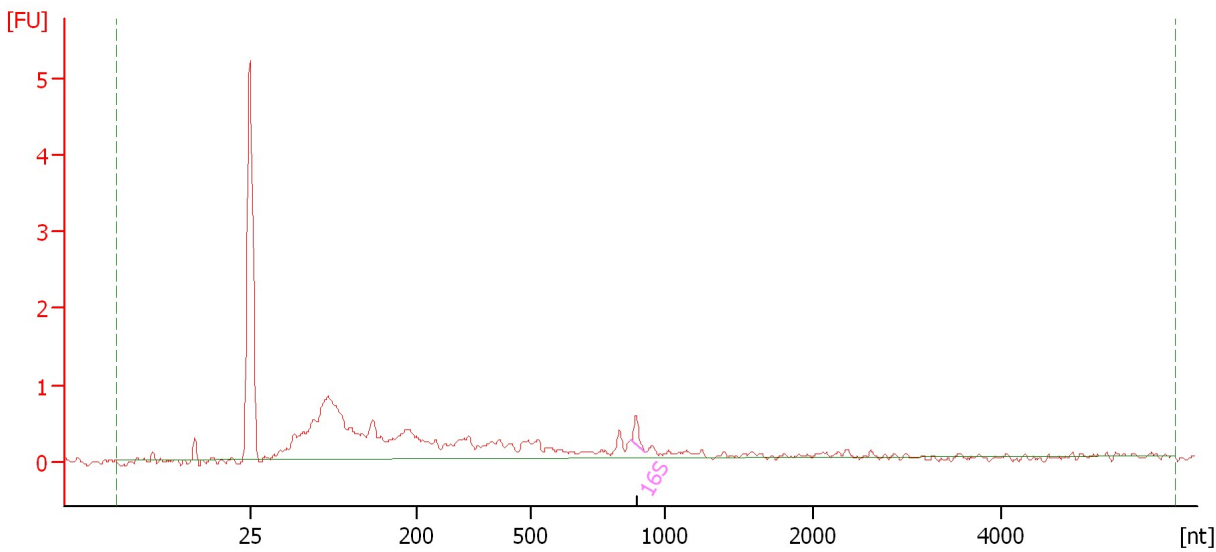
RNA Area:	27.8	rRNA Ratio [23s / 16s]:	0.0
RNA Concentration:	27 ng/μl	RNA Integrity Number (RIN):	2.4 (B.02.08)

Assay Class: Prokaryote Total RNA Nano
Data Path: C:\...ettings\Bioanalyzer\2012-04-03\2012-04-03_001_ErinLynch.xad

Created: 4/3/2012 10:25:06 AM
Modified: 4/3/2012 11:05:03 AM

Electropherogram Summary Continued ...

D dep 4-1



Overall Results for sample 4 : D dep 4-1

RNA Area: 14.4 rRNA Ratio [23s / 16s]: 0.0
RNA Concentration: 14 ng/μl RNA Integrity Number (RIN): 2.7 (B.02.08)

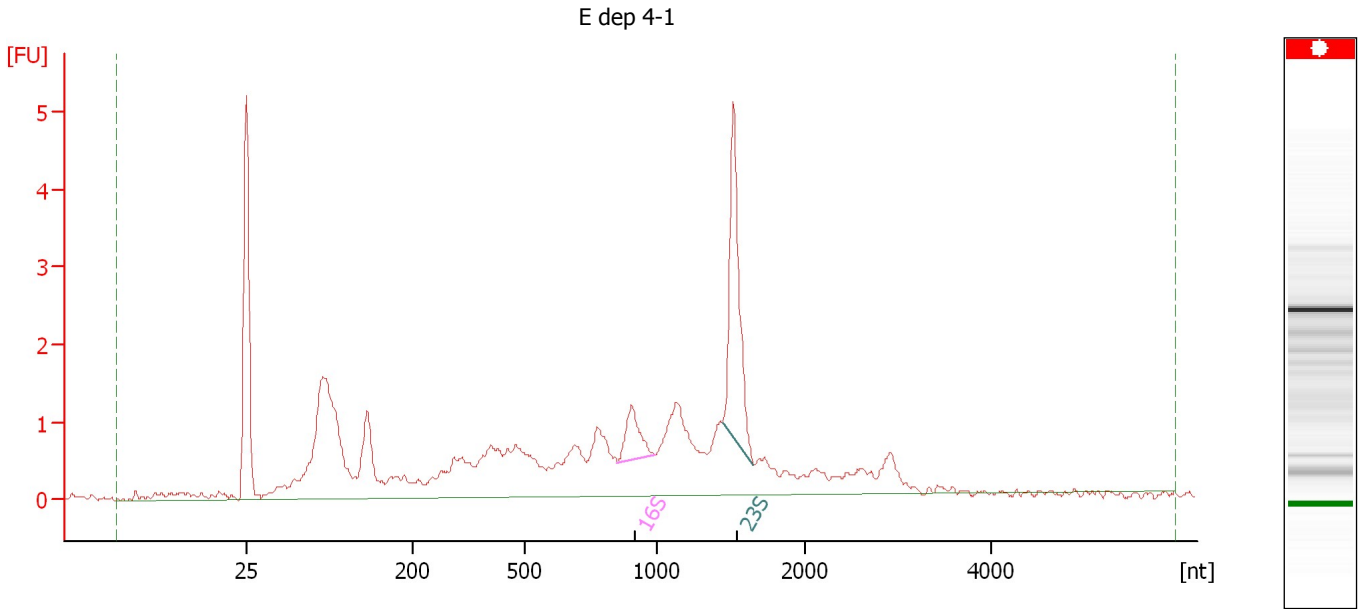
Fragment table for sample 4 : D dep 4-1

Name	Start Size [nt]	End Size [nt]	Area	% of total Area
16S	874	926	0.2	1.7

Assay Class: Prokaryote Total RNA Nano
 Data Path: C:\...ettings\Bioanalyzer\2012-04-03\2012-04-03_001_ErinLynch.xad

Created: 4/3/2012 10:25:06 AM
 Modified: 4/3/2012 11:05:03 AM

Electropherogram Summary Continued ...



Overall Results for sample 5 : E dep 4-1

RNA Area: 44.6 rRNA Ratio [23s / 16s]: 4.0
 RNA Concentration: 43 ng/μl RNA Integrity Number (RIN): N/A (B.02.08)

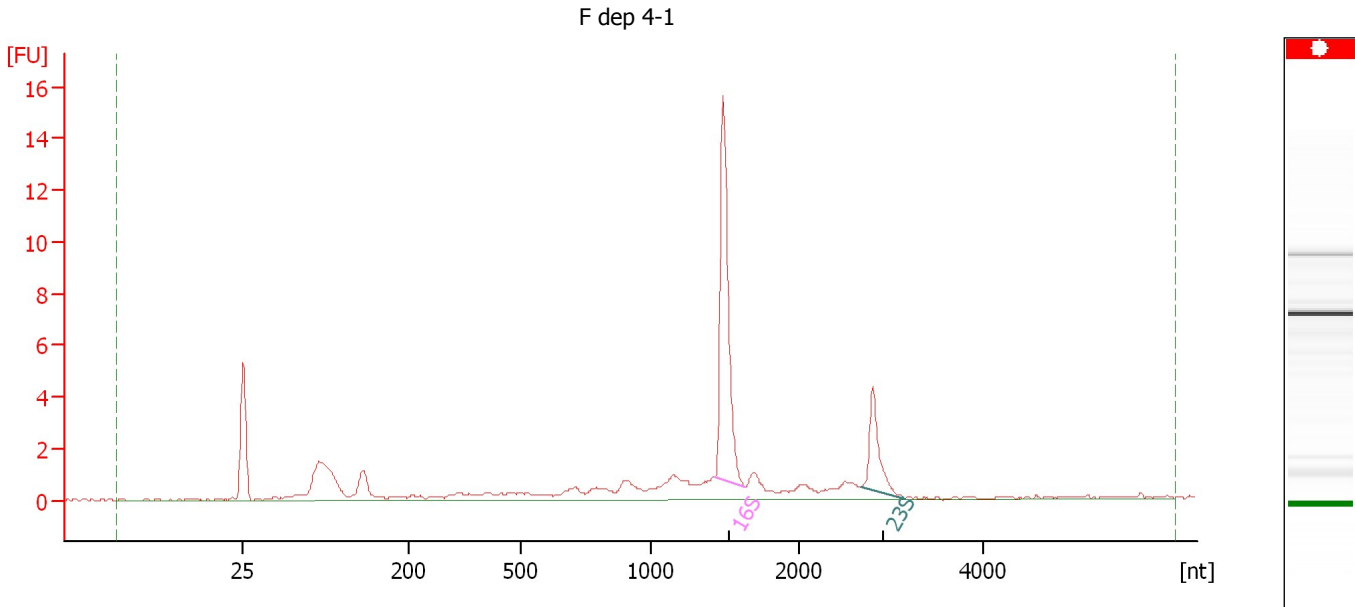
Fragment table for sample 5 : E dep 4-1

Name	Start Size [nt]	End Size [nt]	Area	% of total Area
16S	849	994	1.2	2.6
23S	1,444	1,653	4.6	10.3

Assay Class: Prokaryote Total RNA Nano
 Data Path: C:\...ettings\Bioanalyzer\2012-04-03\2012-04-03_001_ErinLynch.xad

Created: 4/3/2012 10:25:06 AM
 Modified: 4/3/2012 11:05:03 AM

Electropherogram Summary Continued ...



Overall Results for sample 6 : F dep 4-1

RNA Area: 45.4 rRNA Ratio [23s / 16s]: 0.3
 RNA Concentration: 44 ng/μl RNA Integrity Number (RIN): N/A (B.02.08)

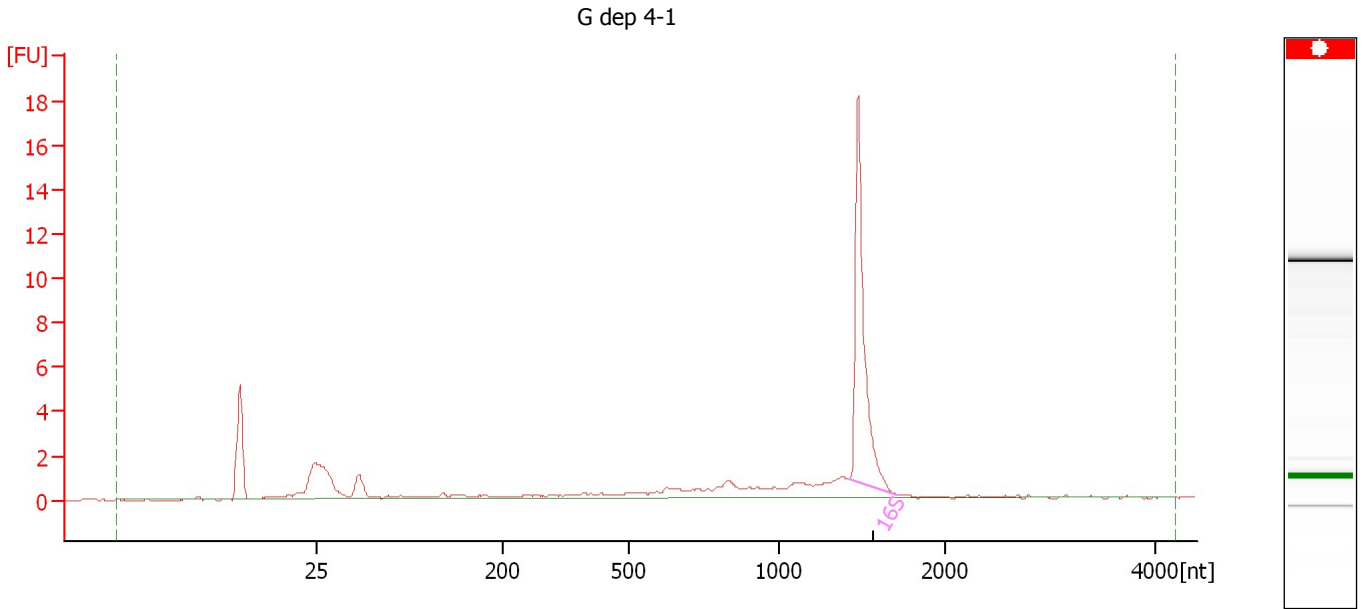
Fragment table for sample 6 : F dep 4-1

Name	Start Size [nt]	End Size [nt]	Area	% of total Area
16S	1,427	1,637	12.9	28.4
23S	2,671	3,147	3.7	8.2

Assay Class: Prokaryote Total RNA Nano
Data Path: C:\...ettings\Bioanalyzer\2012-04-03\2012-04-03_001_ErinLynch.xad

Created: 4/3/2012 10:25:06 AM
Modified: 4/3/2012 11:05:03 AM

Electropherogram Summary Continued ...



Overall Results for sample 7 : G dep 4-1

RNA Area: 41.6 rRNA Ratio [23s / 16s]: 0.0
RNA Concentration: 40 ng/μl RNA Integrity Number (RIN): N/A (B.02.08)

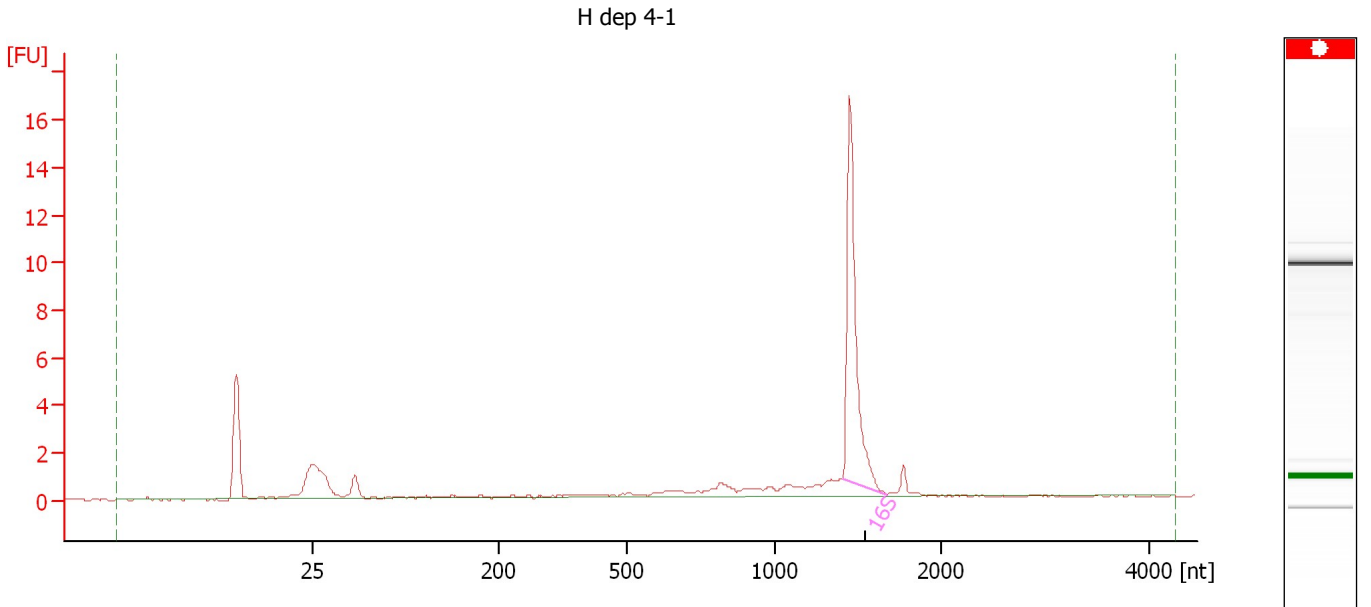
Fragment table for sample 7 : G dep 4-1

Name	Start Size [nt]	End Size [nt]	Area	% of total Area
16S	1,420	1,708	15.1	36.3

Assay Class: Prokaryote Total RNA Nano
 Data Path: C:\...ettings\Bioanalyzer\2012-04-03\2012-04-03_001_ErinLynch.xad

Created: 4/3/2012 10:25:06 AM
 Modified: 4/3/2012 11:05:03 AM

Electropherogram Summary Continued ...



Overall Results for sample 8 : H dep 4-1

RNA Area: 33.0 rRNA Ratio [23s / 16s]: 0.0
 RNA Concentration: 32 ng/μl RNA Integrity Number (RIN): N/A (B.02.08)

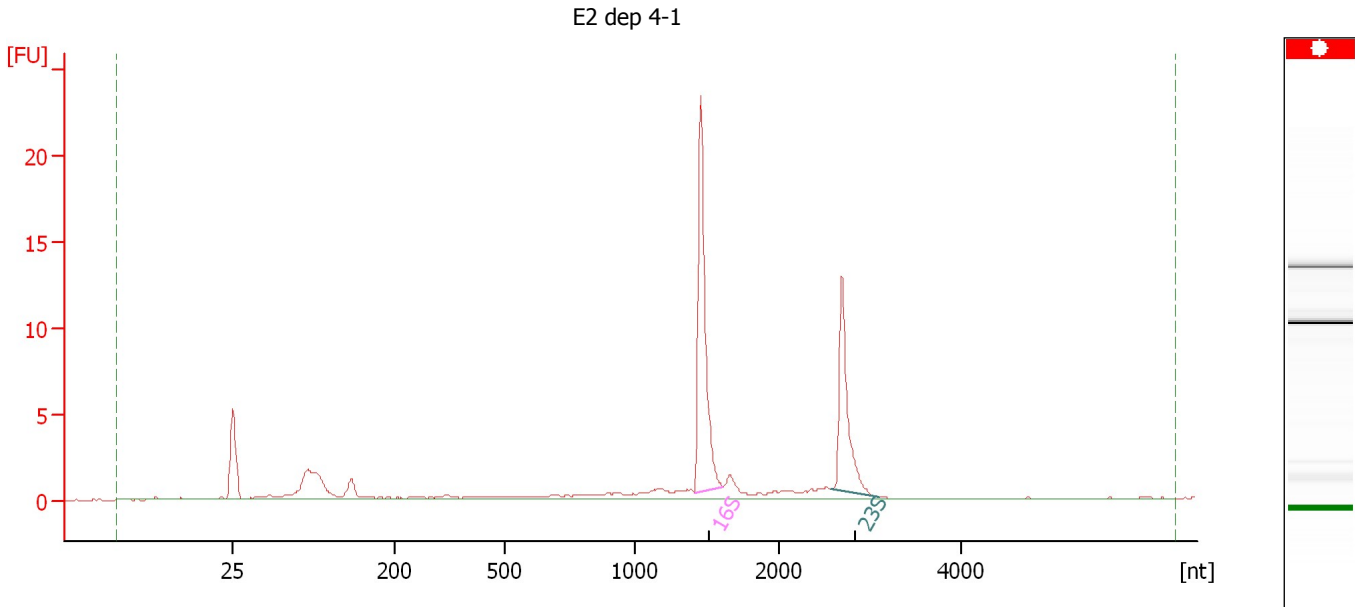
Fragment table for sample 8 : H dep 4-1

Name	Start Size [nt]	End Size [nt]	Area	% of total Area
16S	1,406	1,668	13.4	40.5

Assay Class: Prokaryote Total RNA Nano
 Data Path: C:\...ettings\Bioanalyzer\2012-04-03\2012-04-03_001_ErinLynch.xad

Created: 4/3/2012 10:25:06 AM
 Modified: 4/3/2012 11:05:03 AM

Electropherogram Summary Continued ...



Overall Results for sample 9 : E2 dep 4-1

RNA Area: 57.6 rRNA Ratio [23s / 16s]: 0.6
 RNA Concentration: 55 ng/μl RNA Integrity Number (RIN): N/A (B.02.08)

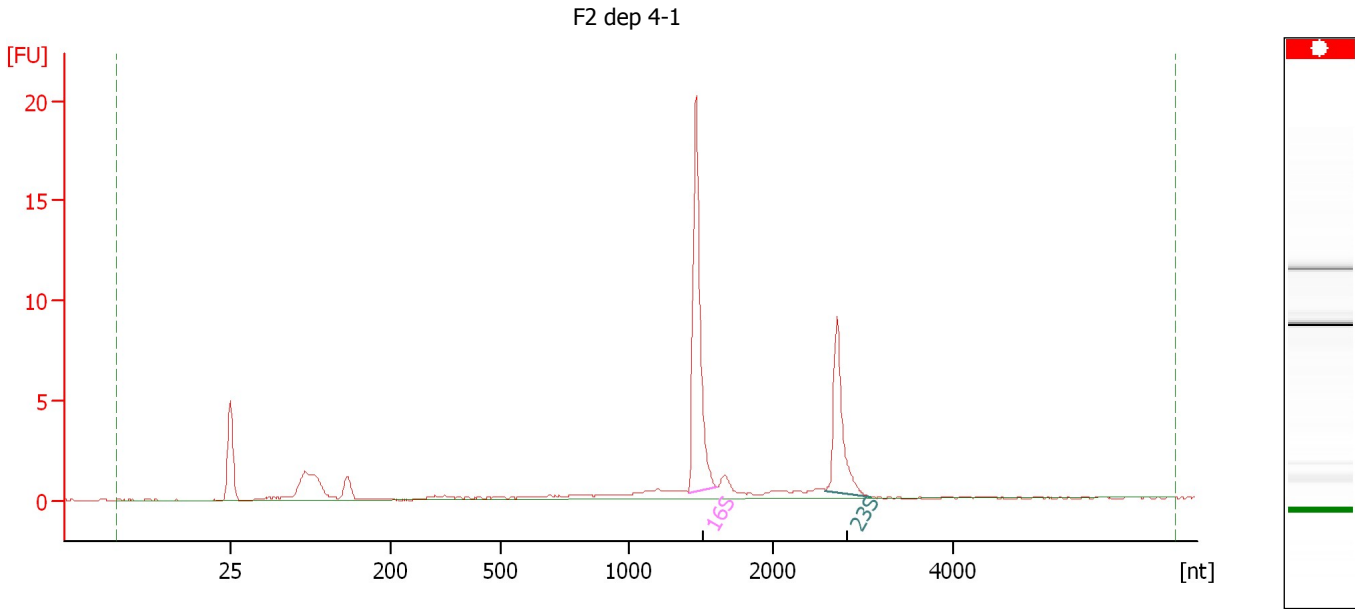
Fragment table for sample 9 : E2 dep 4-1

Name	Start Size [nt]	End Size [nt]	Area	% of total Area
16S	1,411	1,617	19.1	33.2
23S	2,568	3,100	10.7	18.6

Assay Class: Prokaryote Total RNA Nano
Data Path: C:\...ettings\Bioanalyzer\2012-04-03\2012-04-03_001_ErinLynch.xad

Created: 4/3/2012 10:25:06 AM
Modified: 4/3/2012 11:05:03 AM

Electropherogram Summary Continued ...



Overall Results for sample 10 : F2 dep 4-1

RNA Area:	42.5	rRNA Ratio [23s / 16s]:	0.5
RNA Concentration:	41 ng/μl	RNA Integrity Number (RIN):	N/A (B.02.08)

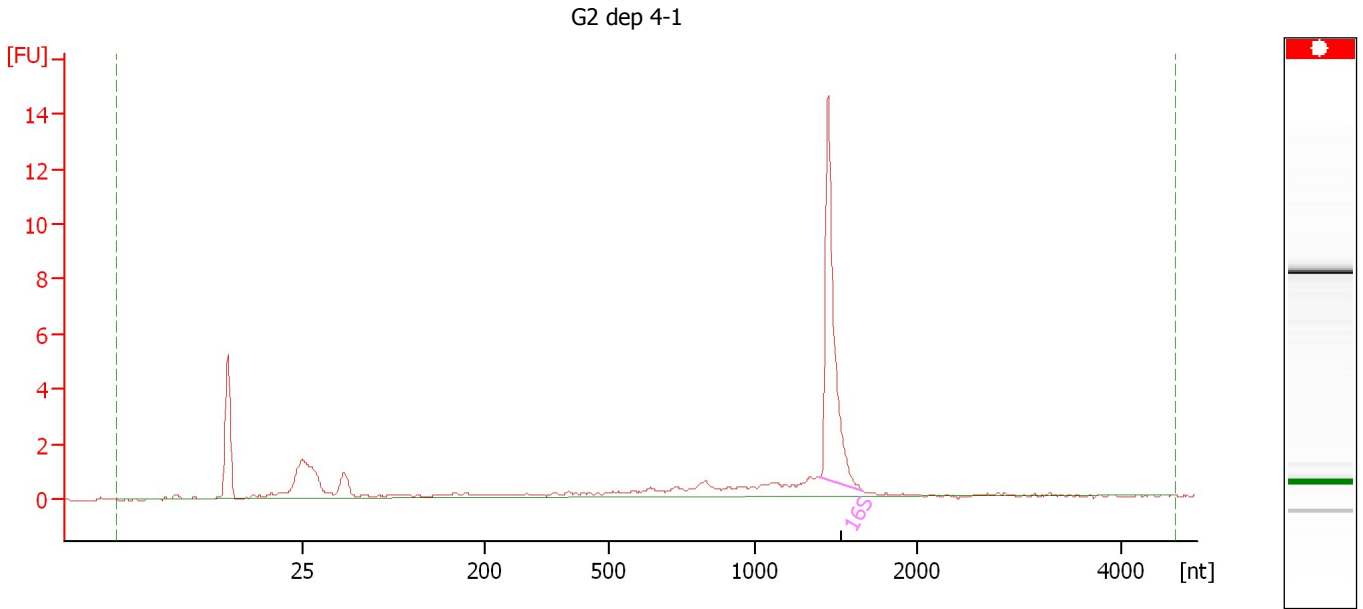
Fragment table for sample 10 : F2 dep 4-1

Name	Start Size [nt]	End Size [nt]	Area	% of total Area
16S	1,415	1,615	16.0	37.6
23S	2,584	3,095	7.6	17.8

Assay Class: Prokaryote Total RNA Nano
Data Path: C:\...ettings\Bioanalyzer\2012-04-03\2012-04-03_001_ErinLynch.xad

Created: 4/3/2012 10:25:06 AM
Modified: 4/3/2012 11:05:03 AM

Electropherogram Summary Continued ...



Overall Results for sample 11 : G2 dep 4-1

RNA Area: 34.7 rRNA Ratio [23s / 16s]: 0.0
RNA Concentration: 33 ng/μl RNA Integrity Number (RIN): N/A (B.02.08)

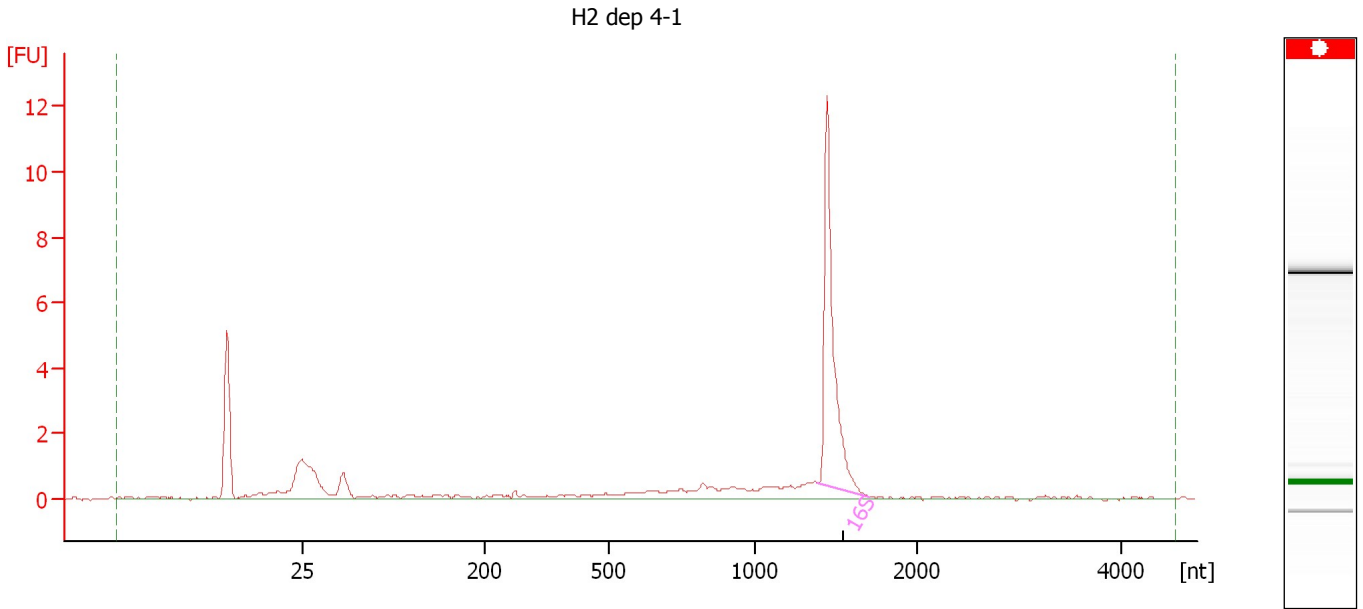
Fragment table for sample 11 : G2 dep 4-1

Name	Start Size [nt]	End Size [nt]	Area	% of total Area
16S	1,396	1,670	12.5	35.9

Assay Class: Prokaryote Total RNA Nano
 Data Path: C:\...ettings\Bioanalyzer\2012-04-03\2012-04-03_001_ErinLynch.xad

Created: 4/3/2012 10:25:06 AM
 Modified: 4/3/2012 11:05:03 AM

Electropherogram Summary Continued ...



Overall Results for sample 12 : H2 dep 4-1

RNA Area: 32.9 rRNA Ratio [23s / 16s]: 0.0
 RNA Concentration: 32 ng/µl RNA Integrity Number (RIN): N/A (B.02.08)

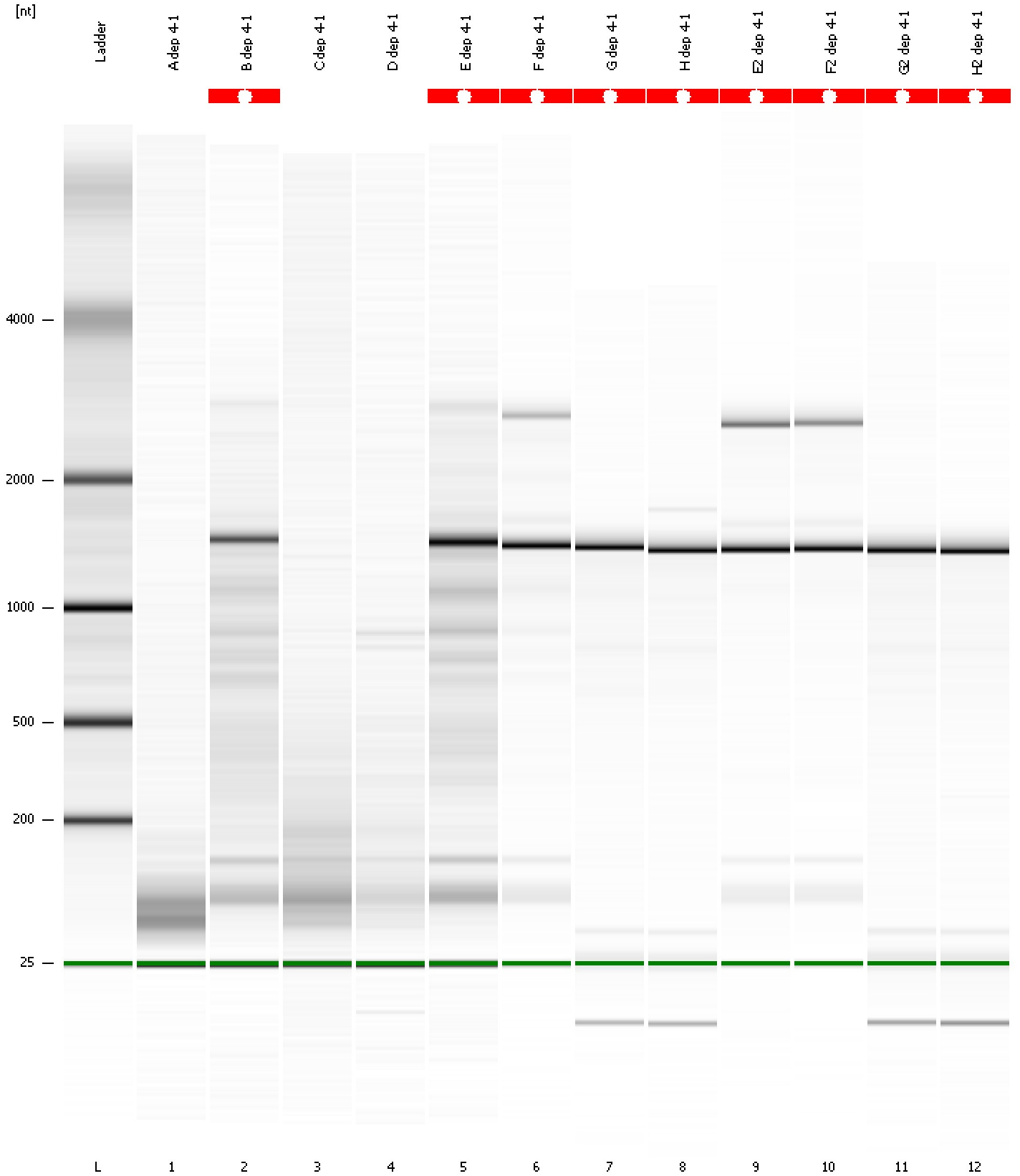
Fragment table for sample 12 : H2 dep 4-1

Name	Start Size [nt]	End Size [nt]	Area	% of total Area
16S	1,383	1,696	10.8	33.0

Assay Class: Prokaryote Total RNA Nano
Data Path: C:\...ettings\Bioanalyzer\2012-04-03\2012-04-03_001_ErinLynch.xad

Created: 4/3/2012 10:25:06 AM
Modified: 4/3/2012 11:05:03 AM

Gel Image



Assay Class: Prokaryote Total RNA Nano
 Data Path: C:\...ettings\Bioanalyzer\2012-04-03\2012-04-03_001_ErinLynch.xad

Created: 4/3/2012 10:25:06 AM
 Modified: 4/3/2012 11:05:03 AM

Run Logbook

Description	Number	Source	Category	Sub Category	Time	Time Zone	User	Host
Run ended on port 1 (Number of wells acquired: 13)		Instrument	Run		4/3/2012 10:48:54 AM	(GMT --07:00) Pacific Standard Time	UC Davis	D8XSMGH1
Run started on port 1 (File: C:\Documents and Settings\Bioanalyzer\2012-04-03\2012-04-03_001.xad)		Instrument	Run		4/3/2012 10:25:11 AM	(GMT --07:00) Pacific Standard Time	UC Davis	D8XSMGH1
Product Number : G2938B		Instrument	Run		4/3/2012 10:25:11 AM	(GMT --07:00) Pacific Standard Time	UC Davis	D8XSMGH1
Name :		Instrument	Run		4/3/2012 10:25:11 AM	(GMT --07:00) Pacific Standard Time	UC Davis	D8XSMGH1
Vendor : Agilent Technologies		Instrument	Run		4/3/2012 10:25:11 AM	(GMT --07:00) Pacific Standard Time	UC Davis	D8XSMGH1
Serial# : DE13701086		Instrument	Run		4/3/2012 10:25:11 AM	(GMT --07:00) Pacific Standard Time	UC Davis	D8XSMGH1
Firmware : C.01.069		Instrument	Run		4/3/2012 10:25:11 AM	(GMT --07:00) Pacific Standard Time	UC Davis	D8XSMGH1
Cartridge : Electrode		Instrument	Run		4/3/2012 10:25:11 AM	(GMT --07:00) Pacific Standard Time	UC Davis	D8XSMGH1