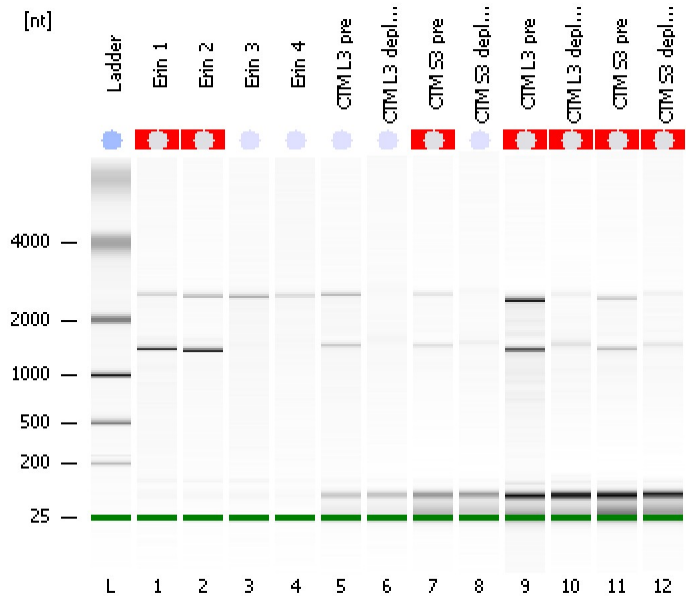


Assay Class: Eukaryote Total RNA Nano  
Data Path: C:\...ents and Settings\Bioanalyzer\2012-04-03\2012-04-03\_003.xad

Created: 4/3/2012 3:33:41 PM  
Modified: 4/3/2012 3:56:55 PM

Electrophoresis File Run Summary



Instrument Information:

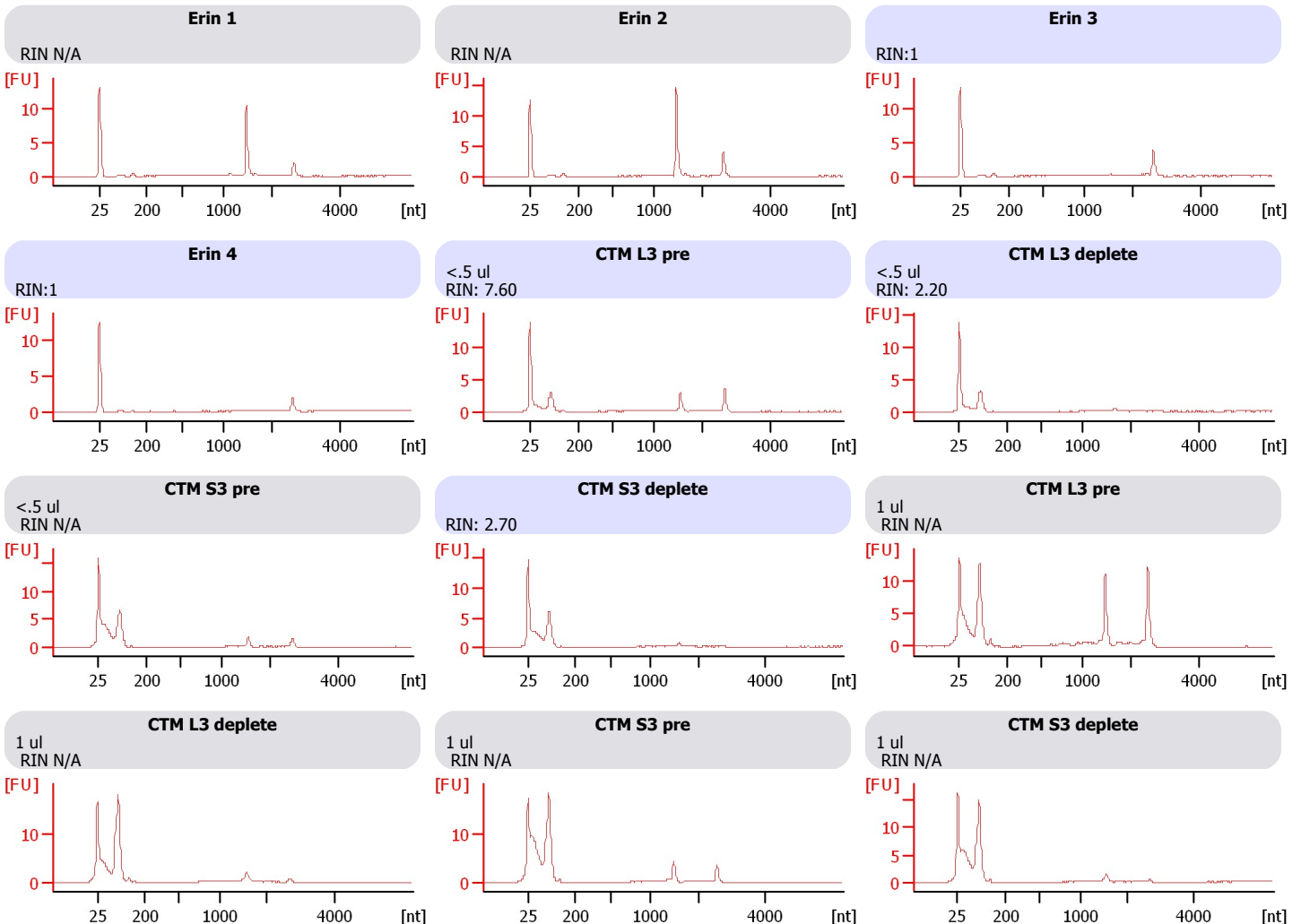
Instrument Name: DE13701086 Firmware: C.01.069  
Serial#: DE13701086 Type: G2938B

Assay Information:

Assay Origin Path: C:\Program Files\Agilent\2100 bioanalyzer\2100 expert\assays\RNA\Eukaryote Total RNA Nano Series II.xsy  
Assay Class: Eukaryote Total RNA Nano  
Version: 2.6  
Assay Comments: Total RNA Analysis ng sensitivity (Eukaryote)  
© Copyright 2003 - 2009 Agilent Technologies, Inc.

Chip Information:

Chip Lot #:   
Reagent Kit Lot #:   
Chip Comments:



Assay Class: Eukaryote Total RNA Nano  
Data Path: C:\...ents and Settings\Bioanalyzer\2012-04-03\2012-04-03\_003.xad

Created: 4/3/2012 3:33:41 PM  
Modified: 4/3/2012 3:56:55 PM

**Electrophoresis File Run Summary (Chip Summary)**

Sample Name	Sample Comment	Status	Result Label	Result Color
Erin 1		✓	RIN N/A	
Erin 2		✓	RIN N/A	
Erin 3		✓	RIN:1	
Erin 4		✓	RIN:1	
CTM L3 pre	<.5 ul	✓	RIN: 7.60	
CTM L3 deplete	<.5 ul	✓	RIN: 2.20	
CTM S3 pre	<.5 ul	✓	RIN N/A	
CTM S3 deplete		✓	RIN: 2.70	
CTM L3 pre	1 ul	✓	RIN N/A	
CTM L3 deplete	1 ul	✓	RIN N/A	
CTM S3 pre	1 ul	✓	RIN N/A	
CTM S3 deplete	1 ul	✓	RIN N/A	
Ladder		✓	All Other Samples	

**Chip Lot #**

**Reagent Kit Lot #**

**Chip Comments :**

Assay Class: Eukaryote Total RNA Nano  
Data Path: C:\...ents and Settings\Bioanalyzer\2012-04-03\2012-04-03\_003.xad

Created: 4/3/2012 3:33:41 PM  
Modified: 4/3/2012 3:56:55 PM

## Electrophoresis Assay Details

### General Analysis Settings

Number of Available Sample and Ladder Wells (Max.) : 13  
Minimum Visible Range [s] : 17  
Maximum Visible Range [s] : 70  
Start Analysis Time Range [s] : 19  
End Analysis Time Range [s] : 69  
Ladder Concentration [ng/μl] : 150  
Lower Marker Concentration [ng/μl] : 0  
Upper Marker Concentration [ng/μl] : 0  
Used Lower Marker for Quantitation  
Standard Curve Fit is Logarithmic  
Show Data Aligned to Lower Marker

### Integrator Settings

Integration Start Time [s] : 19  
Integration End Time [s] : 69  
Slope Threshold : 0.6  
Height Threshold [FU] : 0.5  
Area Threshold : 0.2  
Width Threshold [s] : 0.5  
Baseline Plateau [s] : 6

### Filter Settings

Filter Width [s] : 0.5  
Polynomial Order : 4

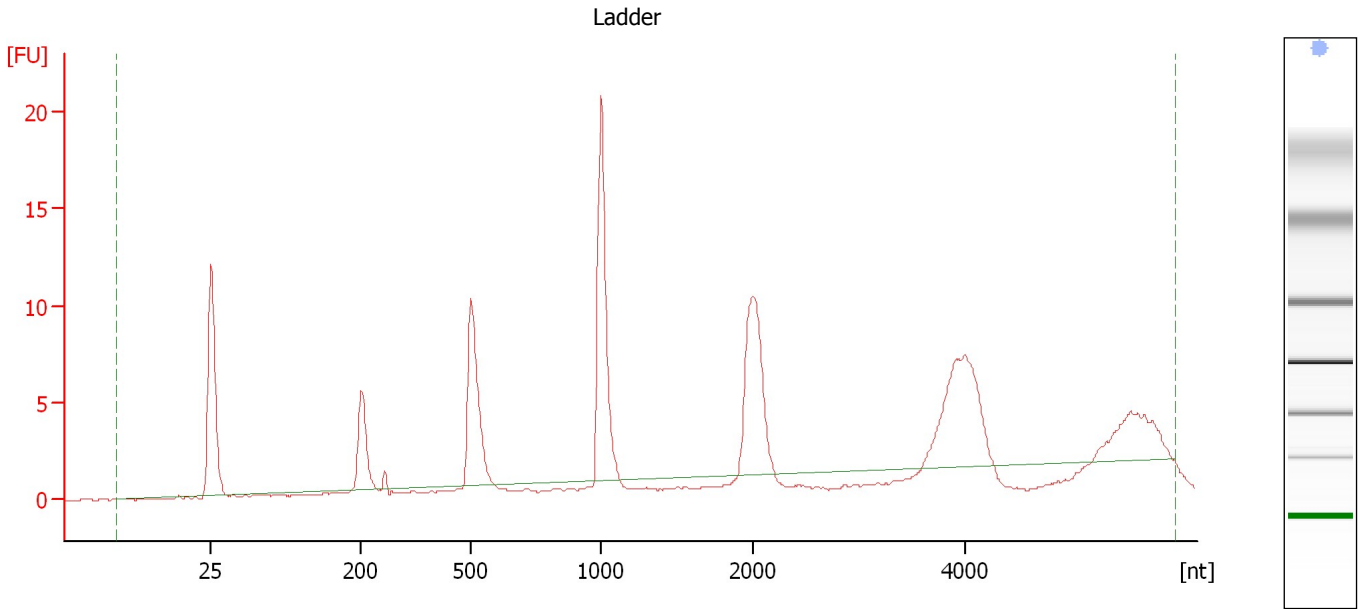
### Ladder

Ladder Peak	Size
1	25
2	200
3	500
4	1000
5	2000
6	4000

Assay Class: Eukaryote Total RNA Nano  
Data Path: C:\...ents and Settings\Bioanalyzer\2012-04-03\2012-04-03\_003.xad

Created: 4/3/2012 3:33:41 PM  
Modified: 4/3/2012 3:56:55 PM

**Electropherogram Summary**



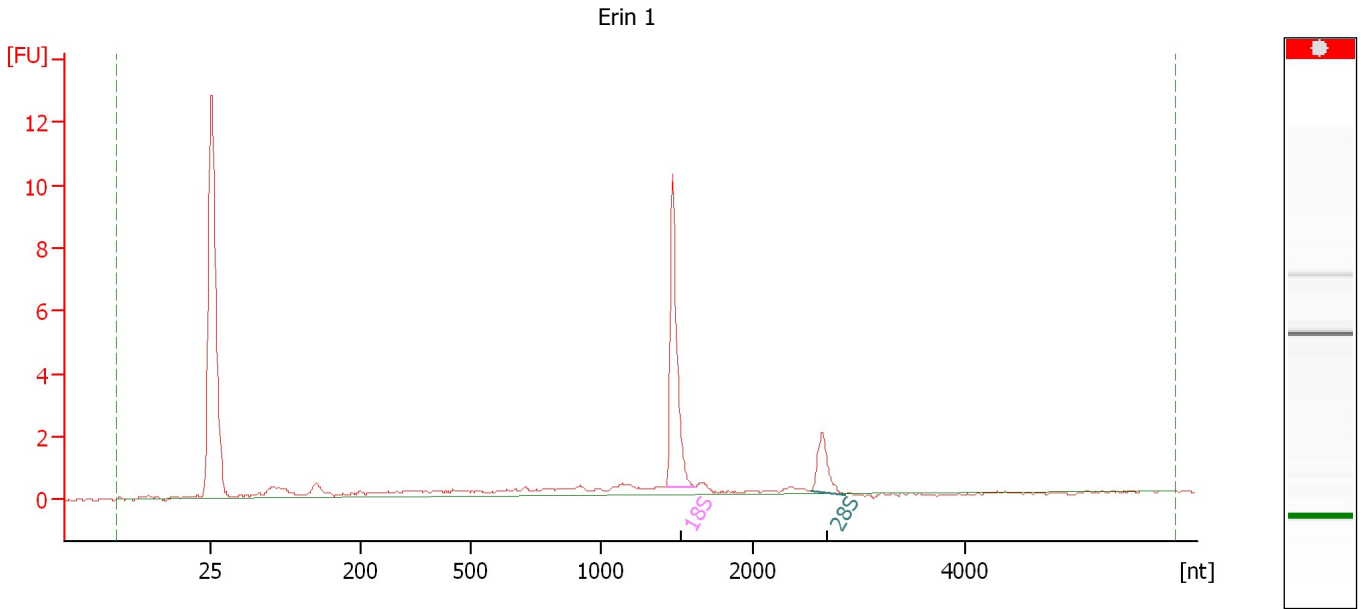
**Overall Results for Ladder**

RNA Area:	85.3	Result Flagging Color:	<span style="background-color: #ADD8E6; border: 1px solid black; display: inline-block; width: 20px; height: 10px;"></span>
RNA Concentration:	150 ng/μl	Result Flagging Label:	All Other Samples

Assay Class: Eukaryote Total RNA Nano  
Data Path: C:\...ents and Settings\Bioanalyzer\2012-04-03\2012-04-03\_003.xad

Created: 4/3/2012 3:33:41 PM  
Modified: 4/3/2012 3:56:55 PM

**Electropherogram Summary Continued ...**



**Overall Results for sample 1 : Erin 1**

RNA Area:	24.3	RNA Integrity Number (RIN):	N/A (B.02.08)
RNA Concentration:	43 ng/μl	Result Flagging Color:	<span style="background-color: #cccccc; border: 1px solid black; display: inline-block; width: 20px; height: 10px;"></span>
rRNA Ratio [28s / 18s]:	0.2	Result Flagging Label:	RIN N/A

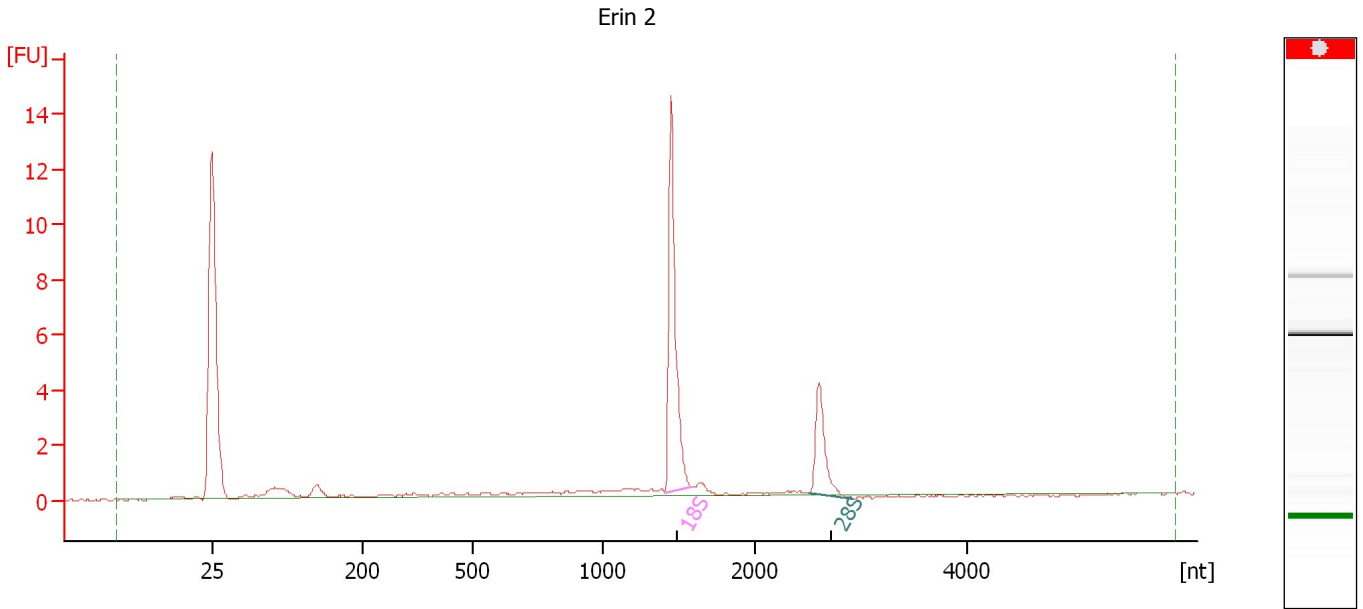
**Fragment table for sample 1 : Erin 1**

Name	Start Size [nt]	End Size [nt]	Area	% of total Area
18S	1,429	1,612	7.9	32.4
28S	2,552	2,874	1.9	7.9

Assay Class: Eukaryote Total RNA Nano  
Data Path: C:\...ents and Settings\Bioanalyzer\2012-04-03\2012-04-03\_003.xad

Created: 4/3/2012 3:33:41 PM  
Modified: 4/3/2012 3:56:55 PM

**Electropherogram Summary Continued ...**



**Overall Results for sample 2 : Erin 2**

RNA Area:	26.8	RNA Integrity Number (RIN):	N/A (B.02.08)
RNA Concentration:	47 ng/μl	Result Flagging Color:	<span style="background-color: #cccccc; border: 1px solid black; display: inline-block; width: 20px; height: 10px;"></span>
rRNA Ratio [28s / 18s]:	0.3	Result Flagging Label:	RIN N/A

**Fragment table for sample 2 : Erin 2**

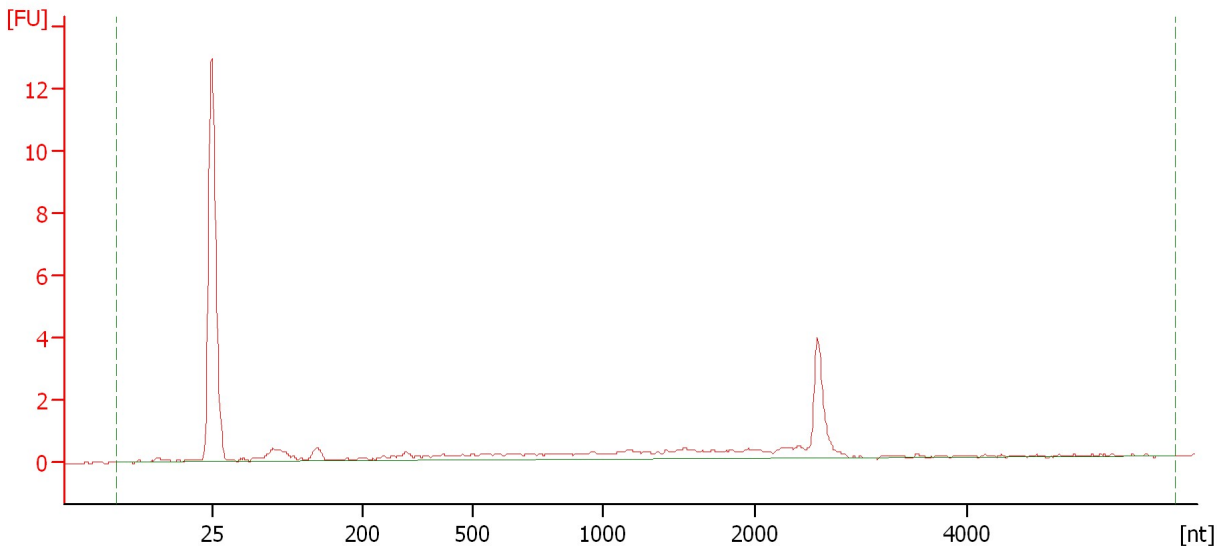
Name	Start Size [nt]	End Size [nt]	Area	% of total Area
18S	1,409	1,584	11.6	43.1
28S	2,510	2,922	3.7	13.8

Assay Class: Eukaryote Total RNA Nano  
Data Path: C:\...ents and Settings\Bioanalyzer\2012-04-03\2012-04-03\_003.xad

Created: 4/3/2012 3:33:41 PM  
Modified: 4/3/2012 3:56:55 PM

**Electropherogram Summary Continued ...**

Erin 3



**Overall Results for sample 3 : Erin 3**

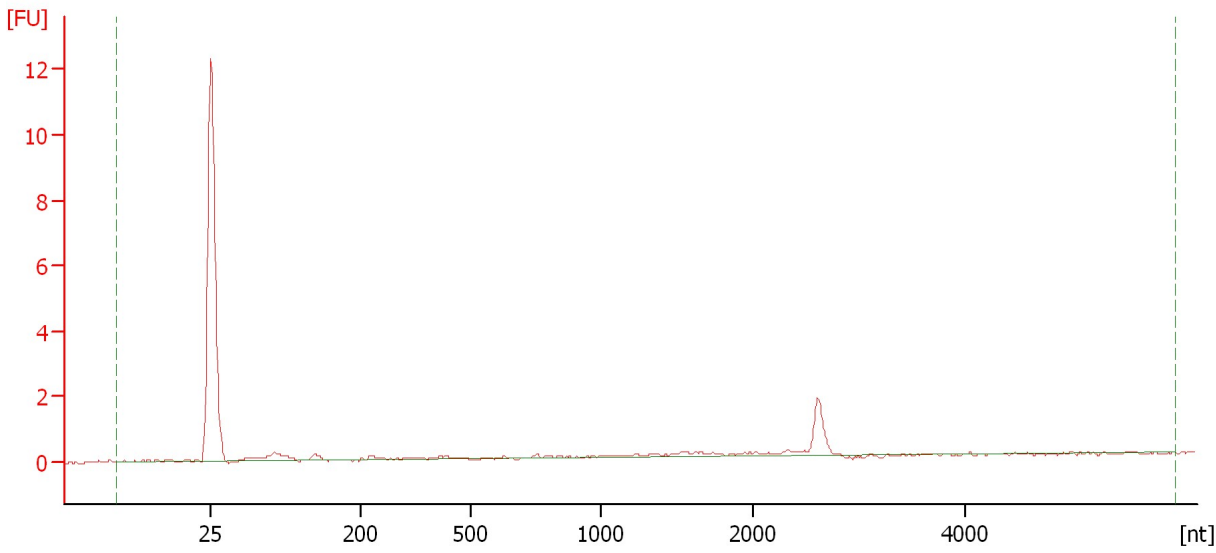
RNA Area:	17.3	RNA Integrity Number (RIN):	1 (B.02.08)
RNA Concentration:	30 ng/μl	Result Flagging Color:	<span style="background-color: #ccccff; border: 1px solid black; display: inline-block; width: 20px; height: 10px;"></span>
rRNA Ratio [28s / 18s]:	0.0	Result Flagging Label:	RIN:1

Assay Class: Eukaryote Total RNA Nano  
Data Path: C:\...ents and Settings\Bioanalyzer\2012-04-03\2012-04-03\_003.xad

Created: 4/3/2012 3:33:41 PM  
Modified: 4/3/2012 3:56:55 PM

**Electropherogram Summary Continued ...**

Erin 4



**Overall Results for sample 4 : Erin 4**

RNA Area:	7.0	RNA Integrity Number (RIN):	1 (B.02.08)
RNA Concentration:	12 ng/μl	Result Flagging Color:	<span style="background-color: #ccccff; border: 1px solid black; display: inline-block; width: 20px; height: 10px;"></span>
rRNA Ratio [28s / 18s]:	0.0	Result Flagging Label:	RIN:1

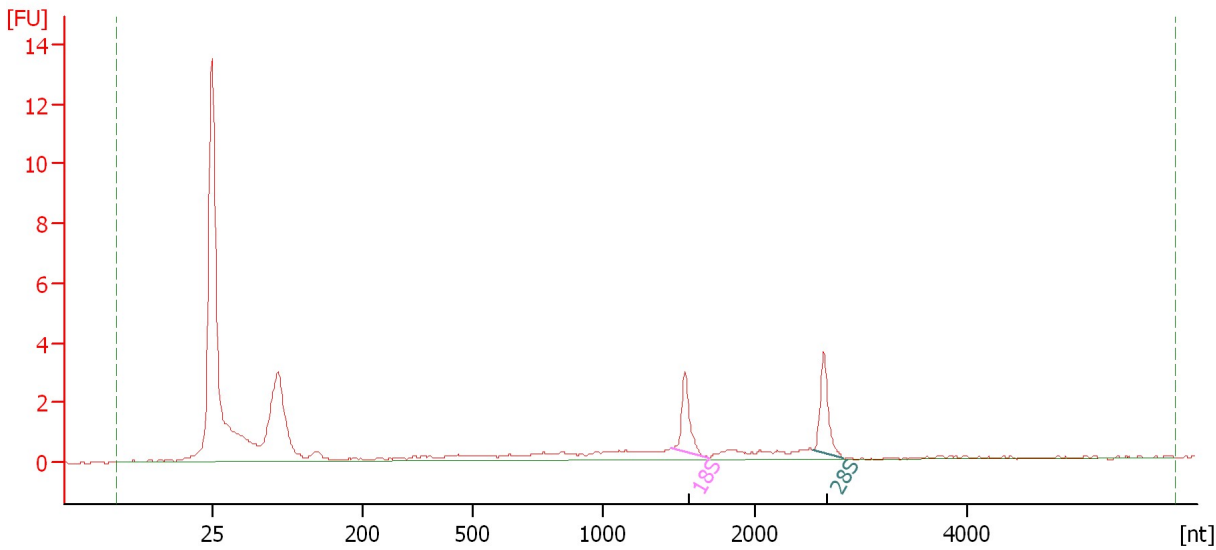


Assay Class: Eukaryote Total RNA Nano  
 Data Path: C:\...ents and Settings\Bioanalyzer\2012-04-03\2012-04-03\_003.xad

Created: 4/3/2012 3:33:41 PM  
 Modified: 4/3/2012 3:56:55 PM

**Electropherogram Summary Continued ...**

CTM L3 pre [ <.5 ul ]



**Overall Results for sample 5 : CTM L3 pre**

RNA Area:	33.0	RNA Integrity Number (RIN):	7.6 (B.02.08)
RNA Concentration:	58 ng/μl	Result Flagging Color:	<span style="background-color: #ccccff; border: 1px solid black; display: inline-block; width: 20px; height: 10px;"></span>
rRNA Ratio [28s / 18s]:	1.1	Result Flagging Label:	RIN: 7.60

**Fragment table for sample 5 : CTM L3 pre**

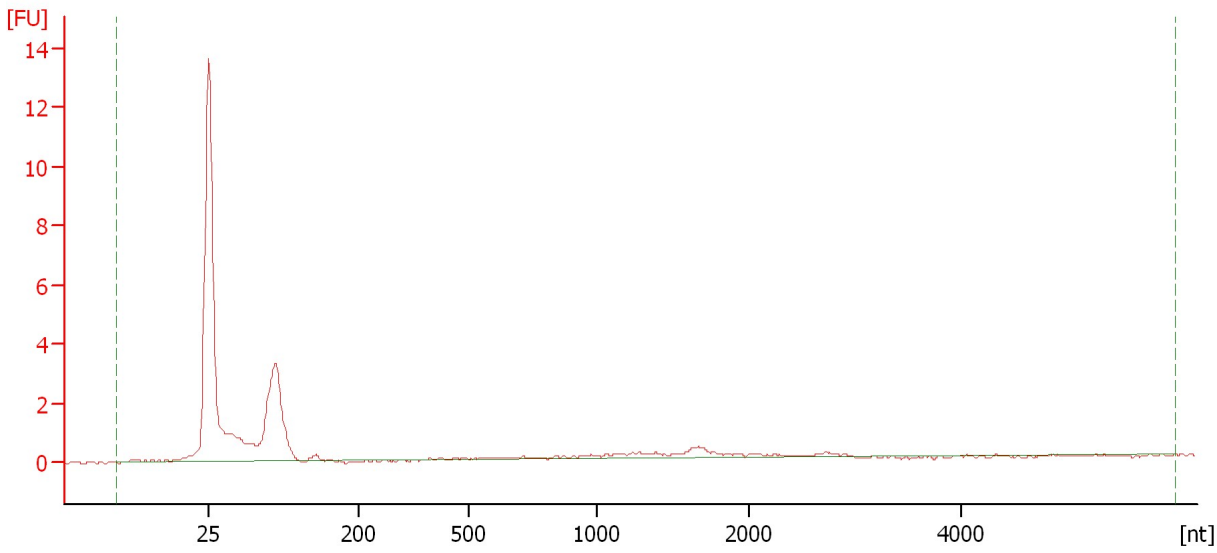
Name	Start Size [nt]	End Size [nt]	Area	% of total Area
18S	1,451	1,697	2.5	7.7
28S	2,551	2,831	2.8	8.5

Assay Class: Eukaryote Total RNA Nano  
Data Path: C:\...ents and Settings\Bioanalyzer\2012-04-03\2012-04-03\_003.xad

Created: 4/3/2012 3:33:41 PM  
Modified: 4/3/2012 3:56:55 PM

**Electropherogram Summary Continued ...**

CTM L3 deplete [ <.5 ul ]



**Overall Results for sample 6 : CTM L3 deplete**

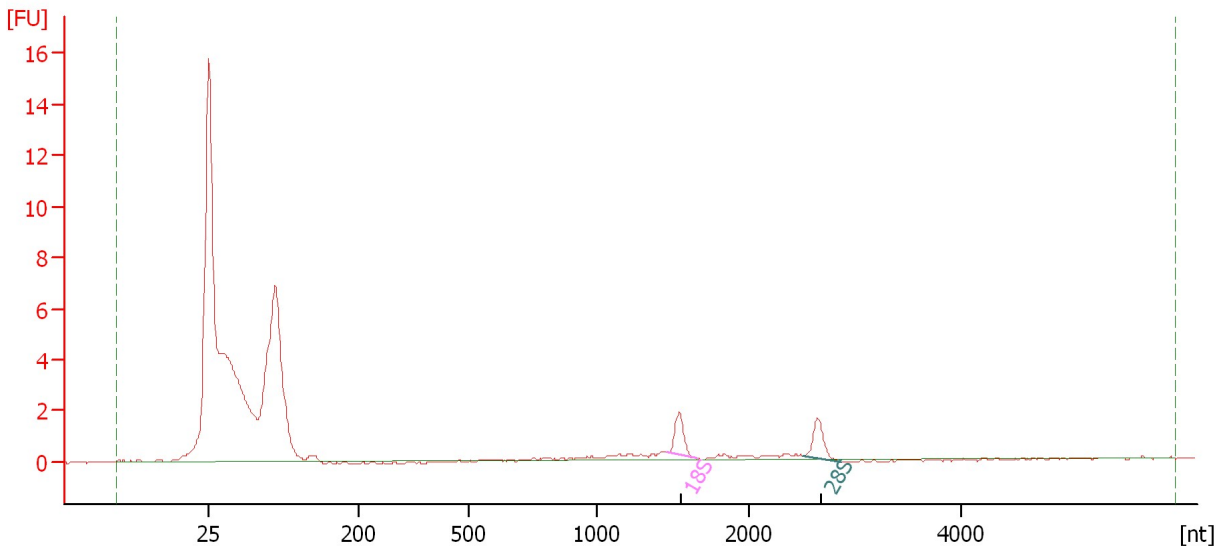
RNA Area:	19.8	RNA Integrity Number (RIN):	2.2 (B.02.08)
RNA Concentration:	35 ng/μl	Result Flagging Color:	<span style="background-color: #ccccff; border: 1px solid black; display: inline-block; width: 20px; height: 10px;"></span>
rRNA Ratio [28s / 18s]:	0.0	Result Flagging Label:	RIN: 2.20

Assay Class: Eukaryote Total RNA Nano  
Data Path: C:\...ents and Settings\Bioanalyzer\2012-04-03\2012-04-03\_003.xad

Created: 4/3/2012 3:33:41 PM  
Modified: 4/3/2012 3:56:55 PM

**Electropherogram Summary Continued ...**

CTM S3 pre [ <.5 ul ]



**Overall Results for sample 7 : CTM S3 pre**

RNA Area: 30.6                      RNA Integrity Number (RIN): N/A (B.02.08)  
RNA Concentration: 54 ng/μl                      Result Flagging Color:   
rRNA Ratio [28s / 18s]: 1.0                      Result Flagging Label: RIN N/A

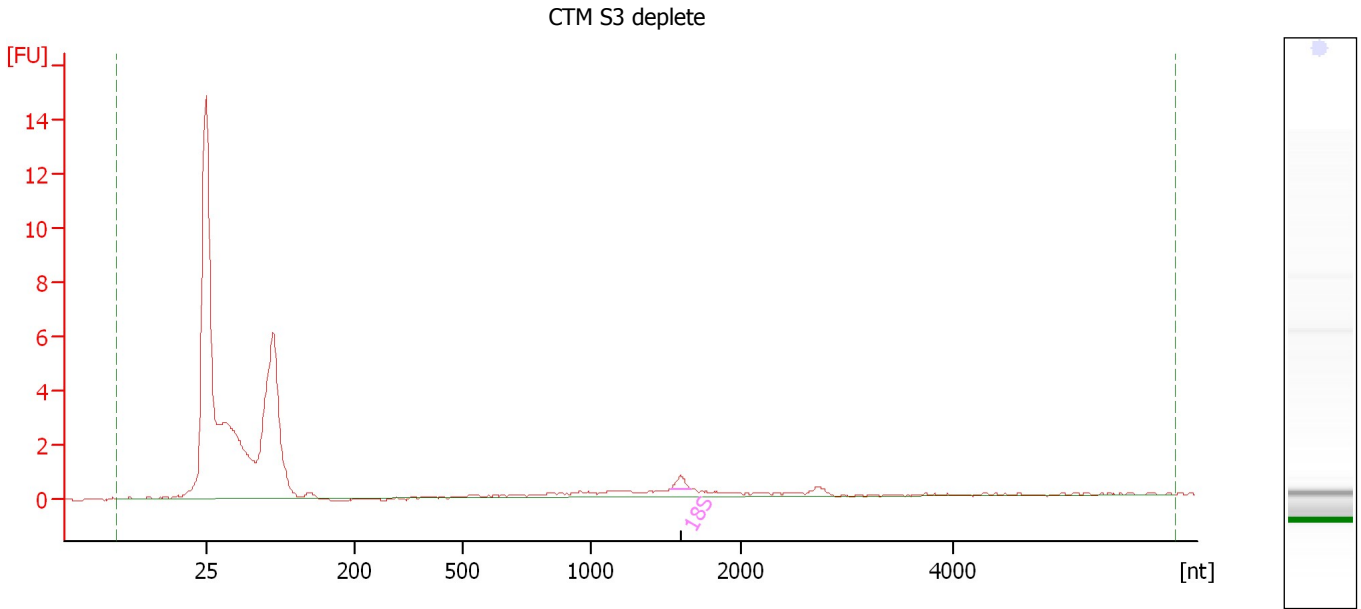
**Fragment table for sample 7 : CTM S3 pre**

Name	Start Size [nt]	End Size [nt]	Area	% of total Area
18S	1,463	1,654	1.7	5.4
28S	2,515	2,869	1.7	5.4

Assay Class: Eukaryote Total RNA Nano  
Data Path: C:\...ents and Settings\Bioanalyzer\2012-04-03\2012-04-03\_003.xad

Created: 4/3/2012 3:33:41 PM  
Modified: 4/3/2012 3:56:55 PM

**Electropherogram Summary Continued ...**



**Overall Results for sample 8 : CTM S3 deplete**

RNA Area:	44.0	RNA Integrity Number (RIN):	2.7 (B.02.08)
RNA Concentration:	77 ng/μl	Result Flagging Color:	<span style="background-color: #ccccff; border: 1px solid black; display: inline-block; width: 20px; height: 10px;"></span>
rRNA Ratio [28s / 18s]:	0.0	Result Flagging Label:	RIN: 2.70

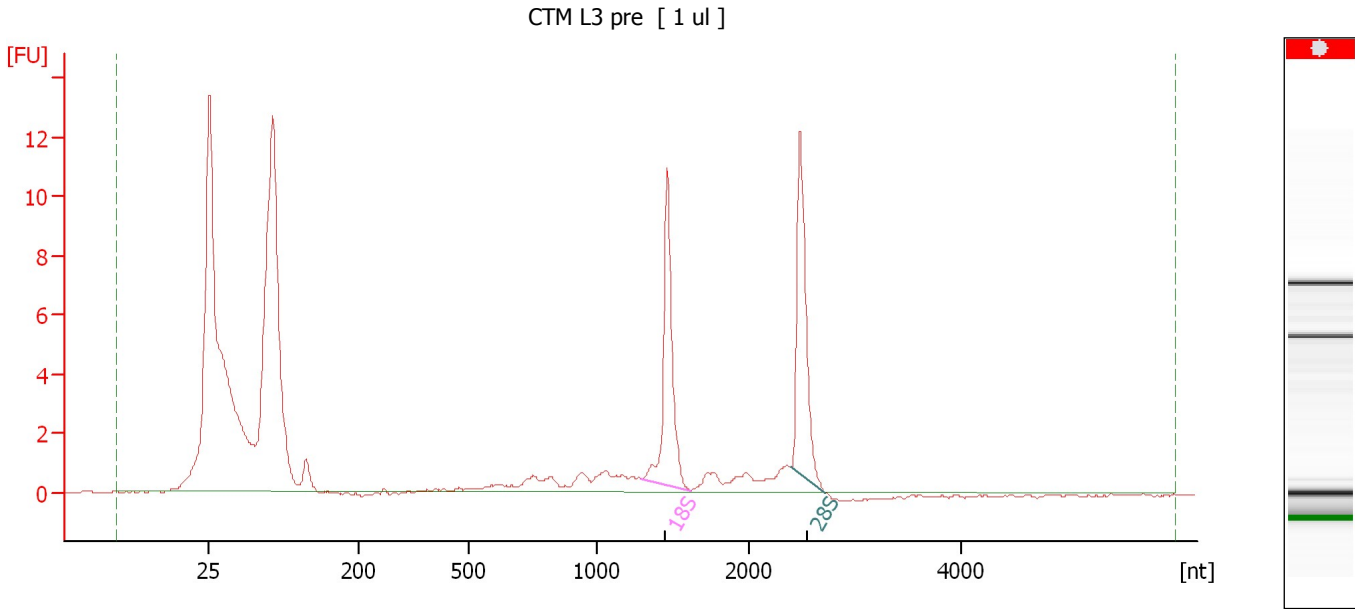
**Fragment table for sample 8 : CTM S3 deplete**

Name	Start Size [nt]	End Size [nt]	Area	% of total Area
18S	1,525	1,660	0.5	1.1

Assay Class: Eukaryote Total RNA Nano  
Data Path: C:\...ents and Settings\Bioanalyzer\2012-04-03\2012-04-03\_003.xad

Created: 4/3/2012 3:33:41 PM  
Modified: 4/3/2012 3:56:55 PM

**Electropherogram Summary Continued ...**



**Overall Results for sample 9 : CTM L3 pre**

RNA Area:	76.2	RNA Integrity Number (RIN):	N/A (B.02.08)
RNA Concentration:	134 ng/μl	Result Flagging Color:	<span style="background-color: #cccccc; border: 1px solid black; display: inline-block; width: 20px; height: 10px;"></span>
rRNA Ratio [28s / 18s]:	1.0	Result Flagging Label:	RIN N/A

**Fragment table for sample 9 : CTM L3 pre**

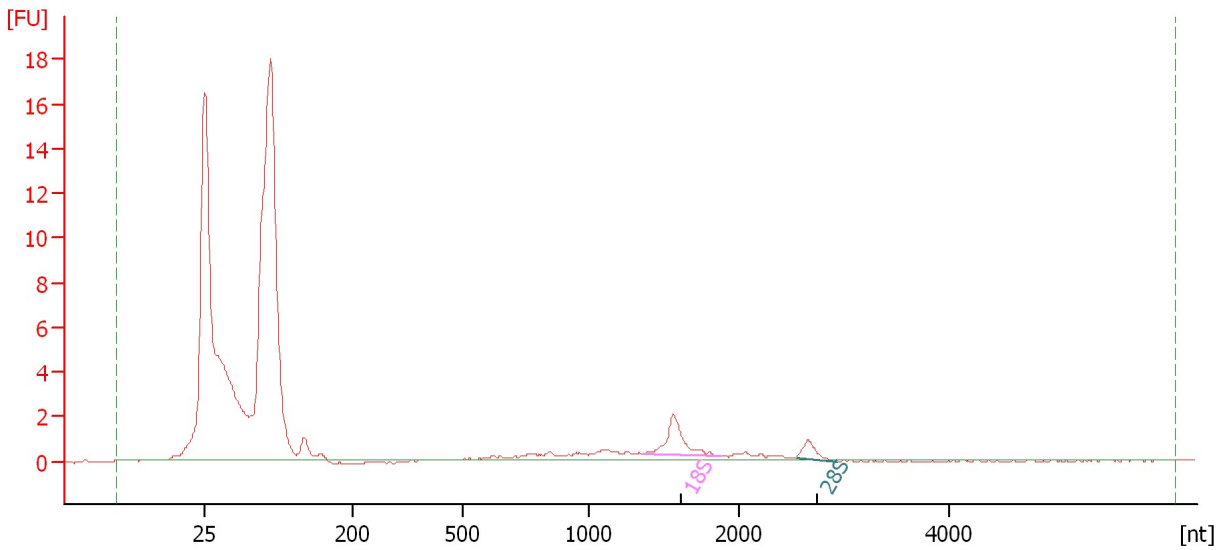
Name	Start Size [nt]	End Size [nt]	Area	% of total Area
18S	1,293	1,618	11.0	14.4
28S	2,394	2,717	10.8	14.1

Assay Class: Eukaryote Total RNA Nano  
 Data Path: C:\...ents and Settings\Bioanalyzer\2012-04-03\2012-04-03\_003.xad

Created: 4/3/2012 3:33:41 PM  
 Modified: 4/3/2012 3:56:55 PM

**Electropherogram Summary Continued ...**

CTM L3 deplete [ 1 ul ]



**Overall Results for sample 10 : CTM L3 deplete**

RNA Area:	71.3	RNA Integrity Number (RIN):	N/A (B.02.08)
RNA Concentration:	125 ng/μl	Result Flagging Color:	<span style="background-color: #cccccc; border: 1px solid black; display: inline-block; width: 20px; height: 10px;"></span>
rRNA Ratio [28s / 18s]:	0.3	Result Flagging Label:	RIN N/A

**Fragment table for sample 10 : CTM L3 deplete**

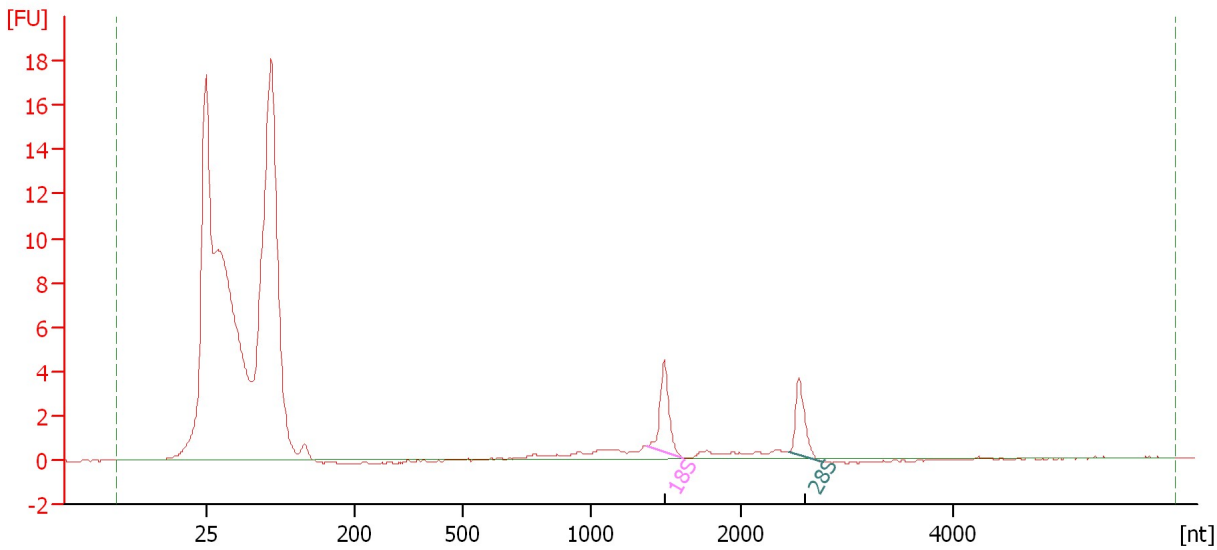
Name	Start Size [nt]	End Size [nt]	Area	% of total Area
18S	1,360	1,874	3.5	4.9
28S	2,543	2,919	1.1	1.5

Assay Class: Eukaryote Total RNA Nano  
 Data Path: C:\...ents and Settings\Bioanalyzer\2012-04-03\2012-04-03\_003.xad

Created: 4/3/2012 3:33:41 PM  
 Modified: 4/3/2012 3:56:55 PM

**Electropherogram Summary Continued ...**

CTM S3 pre [ 1 ul ]



**Overall Results for sample 11 : CTM S3 pre**

RNA Area:	76.1	RNA Integrity Number (RIN):	N/A (B.02.08)
RNA Concentration:	134 ng/μl	Result Flagging Color:	<span style="background-color: #cccccc; border: 1px solid black; display: inline-block; width: 20px; height: 10px;"></span>
rRNA Ratio [28s / 18s]:	0.8	Result Flagging Label:	RIN N/A

**Fragment table for sample 11 : CTM S3 pre**

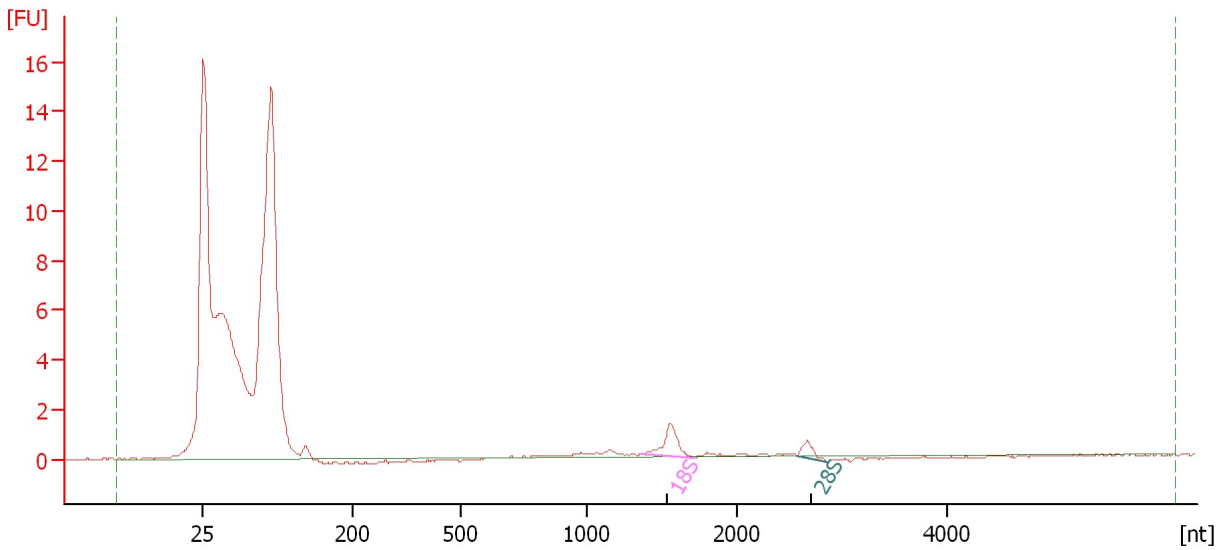
Name	Start Size [nt]	End Size [nt]	Area	% of total Area
18S	1,368	1,603	4.3	5.7
28S	2,439	2,774	3.3	4.4

Assay Class: Eukaryote Total RNA Nano  
Data Path: C:\...ents and Settings\Bioanalyzer\2012-04-03\2012-04-03\_003.xad

Created: 4/3/2012 3:33:41 PM  
Modified: 4/3/2012 3:56:55 PM

**Electropherogram Summary Continued ...**

CTM S3 deplete [ 1 ul ]



**Overall Results for sample 12 : CTM S3 deplete**

RNA Area: 83.0 RNA Integrity Number (RIN): N/A (B.02.08)  
RNA Concentration: 146 ng/μl Result Flagging Color:   
rRNA Ratio [28s / 18s]: 0.3 Result Flagging Label: RIN N/A

**Fragment table for sample 12 : CTM S3 deplete**

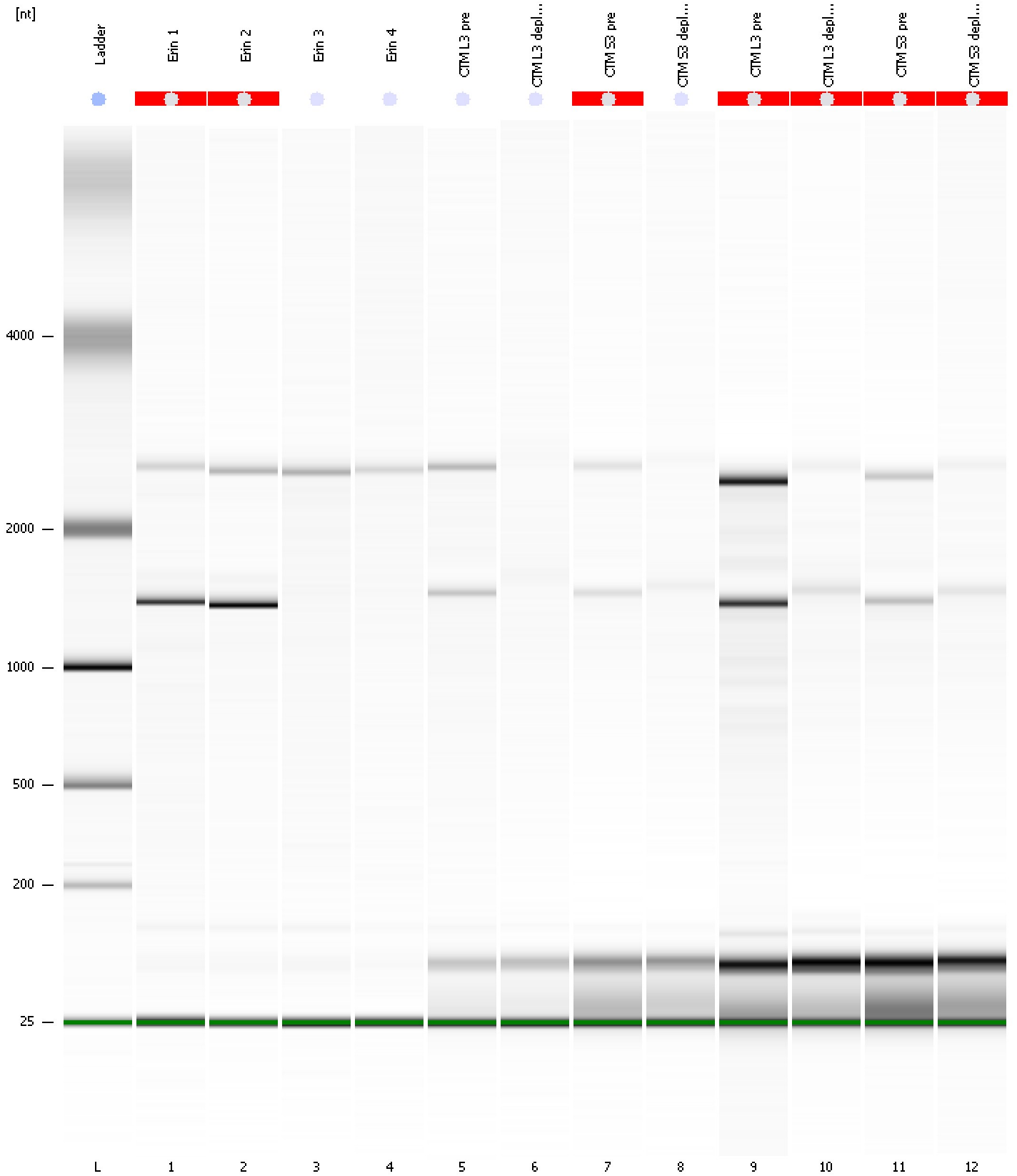
Name	Start Size [nt]	End Size [nt]	Area	% of total Area
18S	1,352	1,710	2.2	2.7
28S	2,575	2,861	0.7	0.9



Assay Class: Eukaryote Total RNA Nano  
Data Path: C:\...ents and Settings\Bioanalyzer\2012-04-03\2012-04-03\_003.xad

Created: 4/3/2012 3:33:41 PM  
Modified: 4/3/2012 3:56:55 PM

**Gel Image**



Assay Class: Eukaryote Total RNA Nano Created: 4/3/2012 3:33:41 PM  
 Data Path: C:\...ents and Settings\Bioanalyzer\2012-04-03\2012-04-03\_003.xad Modified: 4/3/2012 3:56:55 PM

**Run Logbook**

Description	Number	Source	Category	Sub Category	Time	Time Zone	User	Host
Run ended on port 1 (Number of wells acquired: 13)		Instrument	Run		4/3/2012 3:56:44 PM	(GMT --07:00) Pacific Standard Time	UC Davis	D8XSMGH1
Run started on port 1 (File: C:\Documents and Settings\Bioanalyzer\2012-04-03\2012-04-03_003.xad)		Instrument	Run		4/3/2012 3:33:47 PM	(GMT --07:00) Pacific Standard Time	UC Davis	D8XSMGH1
Product Number : G2938B		Instrument	Run		4/3/2012 3:33:47 PM	(GMT --07:00) Pacific Standard Time	UC Davis	D8XSMGH1
Name :		Instrument	Run		4/3/2012 3:33:47 PM	(GMT --07:00) Pacific Standard Time	UC Davis	D8XSMGH1
Vendor : Agilent Technologies		Instrument	Run		4/3/2012 3:33:47 PM	(GMT --07:00) Pacific Standard Time	UC Davis	D8XSMGH1
Serial# : DE13701086		Instrument	Run		4/3/2012 3:33:47 PM	(GMT --07:00) Pacific Standard Time	UC Davis	D8XSMGH1
Firmware : C.01.069		Instrument	Run		4/3/2012 3:33:47 PM	(GMT --07:00) Pacific Standard Time	UC Davis	D8XSMGH1
Cartridge : Electrode		Instrument	Run		4/3/2012 3:33:47 PM	(GMT --07:00) Pacific Standard Time	UC Davis	D8XSMGH1