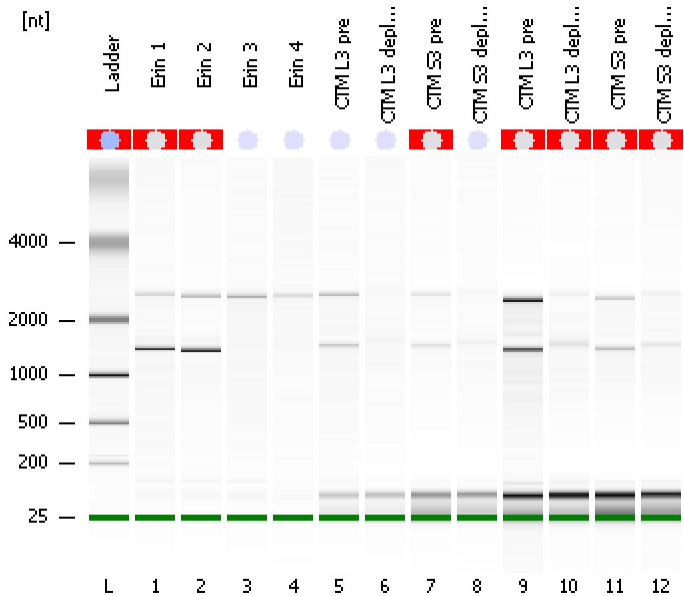


Assay Class: Eukaryote Total RNA Nano
 Data Path: C:\...ttings\Bioanalyzer\2012-04-03\2012-04-03_003_ErinLynch2.xad

Created: 4/3/2012 3:33:41 PM
 Modified: 4/4/2012 9:19:23 AM

Electrophoresis File Run Summary



Instrument Information:

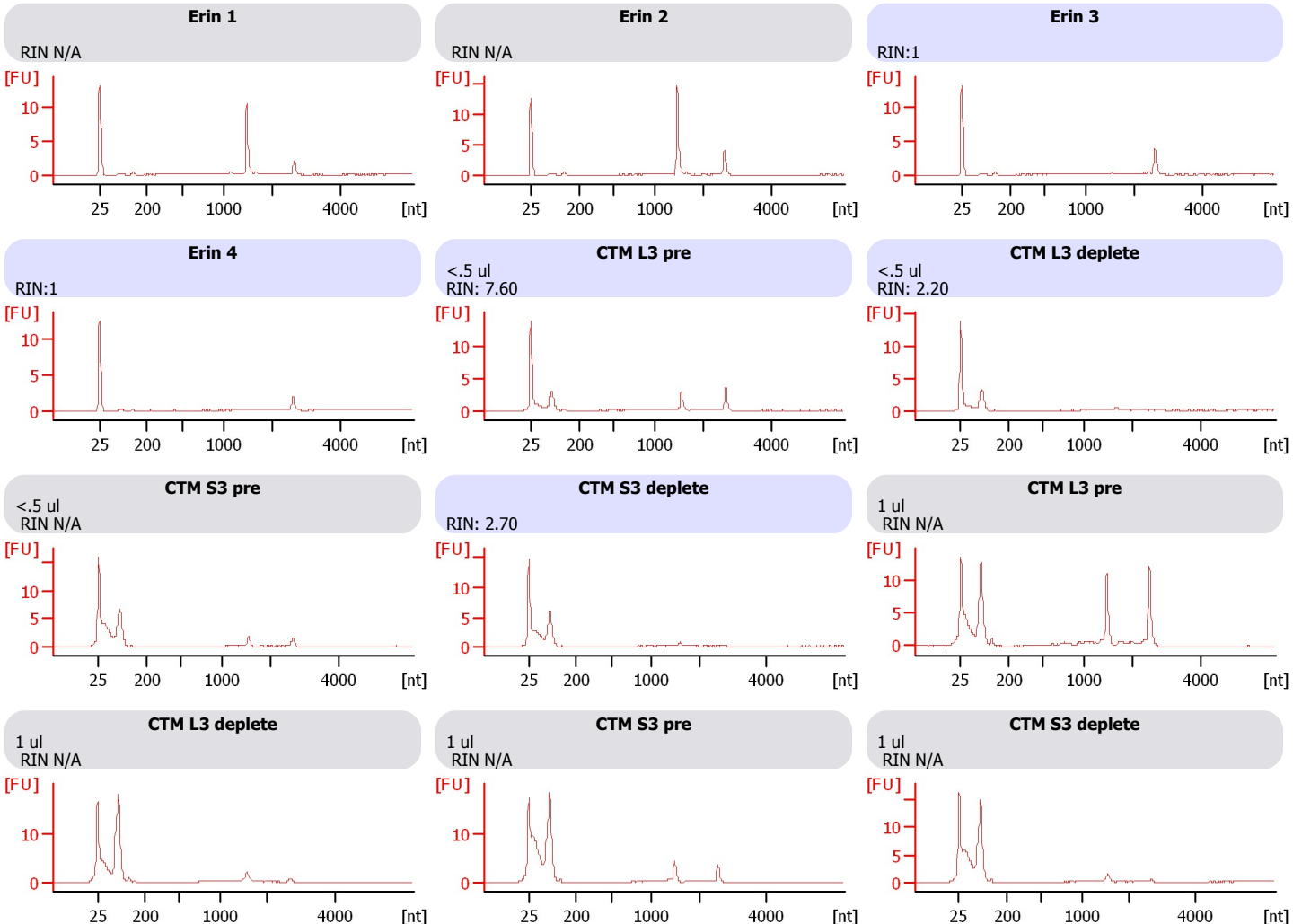
Instrument Name: DE13701086 Firmware: C.01.069
 Serial#: DE13701086 Type: G2938B

Assay Information:

Assay Origin Path: C:\Program Files\Agilent\2100 bioanalyzer\2100 expert\assays\RNA\Eukaryote Total RNA Nano Series II.xsy
 Assay Class: Eukaryote Total RNA Nano
 Version: 2.6
 Assay Comments: Total RNA Analysis ng sensitivity (Eukaryote)
 © Copyright 2003 - 2009 Agilent Technologies, Inc.

Chip Information:

Chip Lot #:
 Reagent Kit Lot #:
 Chip Comments:



Assay Class: Eukaryote Total RNA Nano
 Data Path: C:\...ttings\Bioanalyzer\2012-04-03\2012-04-03_003_ErinLynch2.xad

Created: 4/3/2012 3:33:41 PM
 Modified: 4/4/2012 9:19:23 AM

Electrophoresis File Run Summary (Chip Summary)

Sample Name	Sample Comment	Status	Result Label	Result Color
Erin 1		✓	RIN N/A	
Erin 2		✓	RIN N/A	
Erin 3		✓	RIN:1	
Erin 4		✓	RIN:1	
CTM L3 pre	<.5 ul	✓	RIN: 7.60	
CTM L3 deplete	<.5 ul	✓	RIN: 2.20	
CTM S3 pre	<.5 ul	✓	RIN N/A	
CTM S3 deplete		✓	RIN: 2.70	
CTM L3 pre	1 ul	✓	RIN N/A	
CTM L3 deplete	1 ul	✓	RIN N/A	
CTM S3 pre	1 ul	✓	RIN N/A	
CTM S3 deplete	1 ul	✓	RIN N/A	
Ladder		✓	All Other Samples	

Chip Lot #

Reagent Kit Lot #

Chip Comments :

Assay Class: Eukaryote Total RNA Nano
Data Path: C:\...ttings\Bioanalyzer\2012-04-03\2012-04-03_003_ErinLynch2.xad

Created: 4/3/2012 3:33:41 PM
Modified: 4/4/2012 9:19:23 AM

Electrophoresis Assay Details

General Analysis Settings

Number of Available Sample and Ladder Wells (Max.) : 13
Minimum Visible Range [s] : 17
Maximum Visible Range [s] : 70
Start Analysis Time Range [s] : 19
End Analysis Time Range [s] : 69
Ladder Concentration [ng/μl] : 150
Lower Marker Concentration [ng/μl] : 0
Upper Marker Concentration [ng/μl] : 0
Used Lower Marker for Quantitation
Standard Curve Fit is Logarithmic
Show Data Aligned to Lower Marker

Integrator Settings

Integration Start Time [s] : 19
Integration End Time [s] : 69
Slope Threshold : 0.6
Height Threshold [FU] : 0.5
Area Threshold : 0.2
Width Threshold [s] : 0.5
Baseline Plateau [s] : 6

Filter Settings

Filter Width [s] : 0.5
Polynomial Order : 4

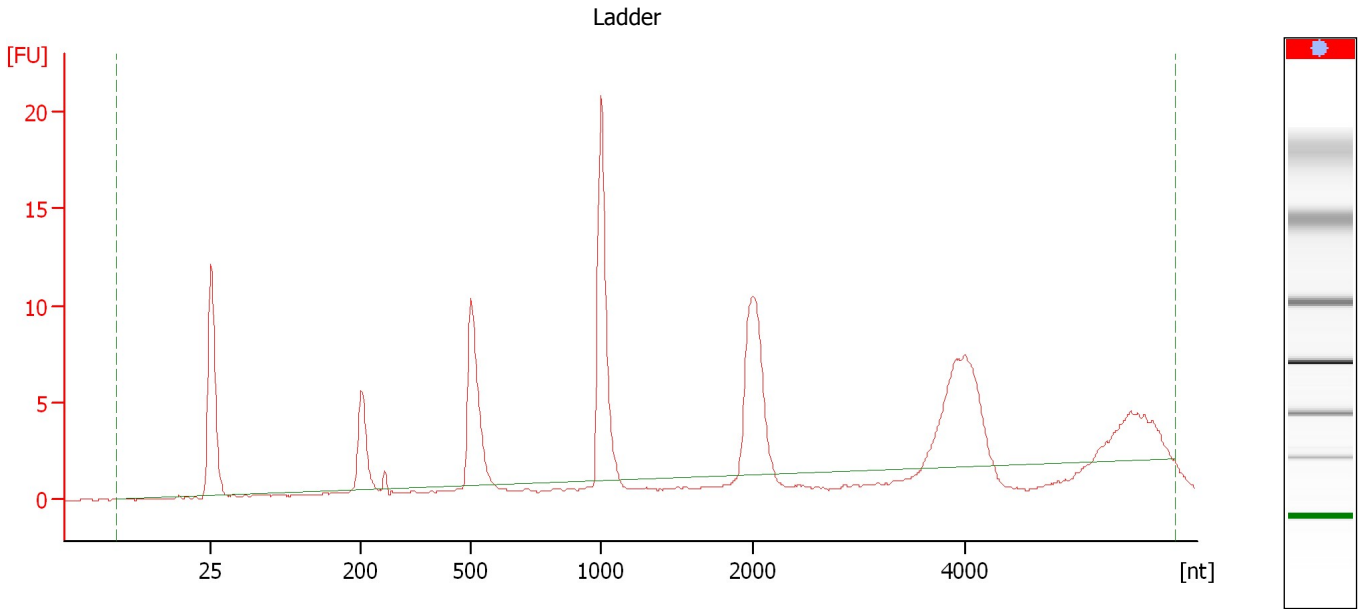
Ladder

Ladder Peak	Size
1	25
2	200
3	500
4	1000
5	2000
6	4000

Assay Class: Eukaryote Total RNA Nano
Data Path: C:\...ttings\Bioanalyzer\2012-04-03\2012-04-03_003_ErinLynch2.xad

Created: 4/3/2012 3:33:41 PM
Modified: 4/4/2012 9:19:23 AM

Electropherogram Summary



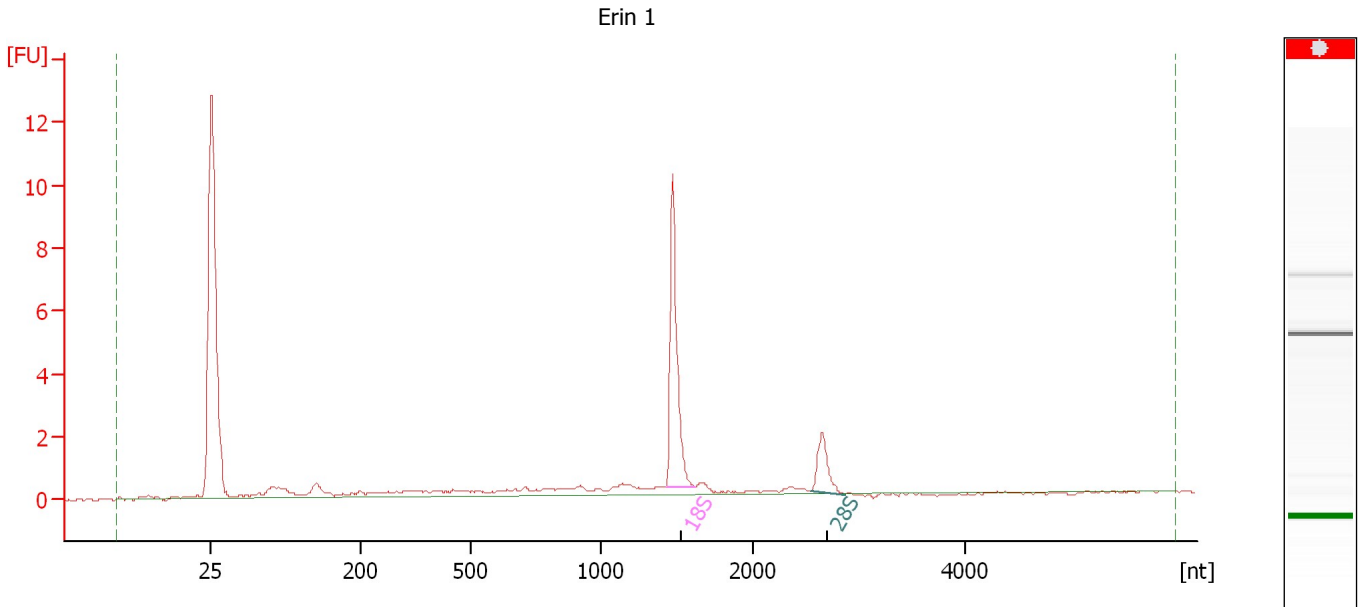
Overall Results for Ladder

RNA Area: 0.0 Result Flagging Label: All Other Samples
Result Flagging Color:


Assay Class: Eukaryote Total RNA Nano
Data Path: C:\...ttings\Bioanalyzer\2012-04-03\2012-04-03_003_ErinLynch2.xad

Created: 4/3/2012 3:33:41 PM
Modified: 4/4/2012 9:19:23 AM

Electropherogram Summary Continued ...



Overall Results for sample 1 : Erin 1

RNA Area:	24.3	RNA Integrity Number (RIN):	N/A (B.02.08)
RNA Concentration:	0 ng/μl	Result Flagging Color:	
rRNA Ratio [28s / 18s]:	0.2	Result Flagging Label:	RIN N/A

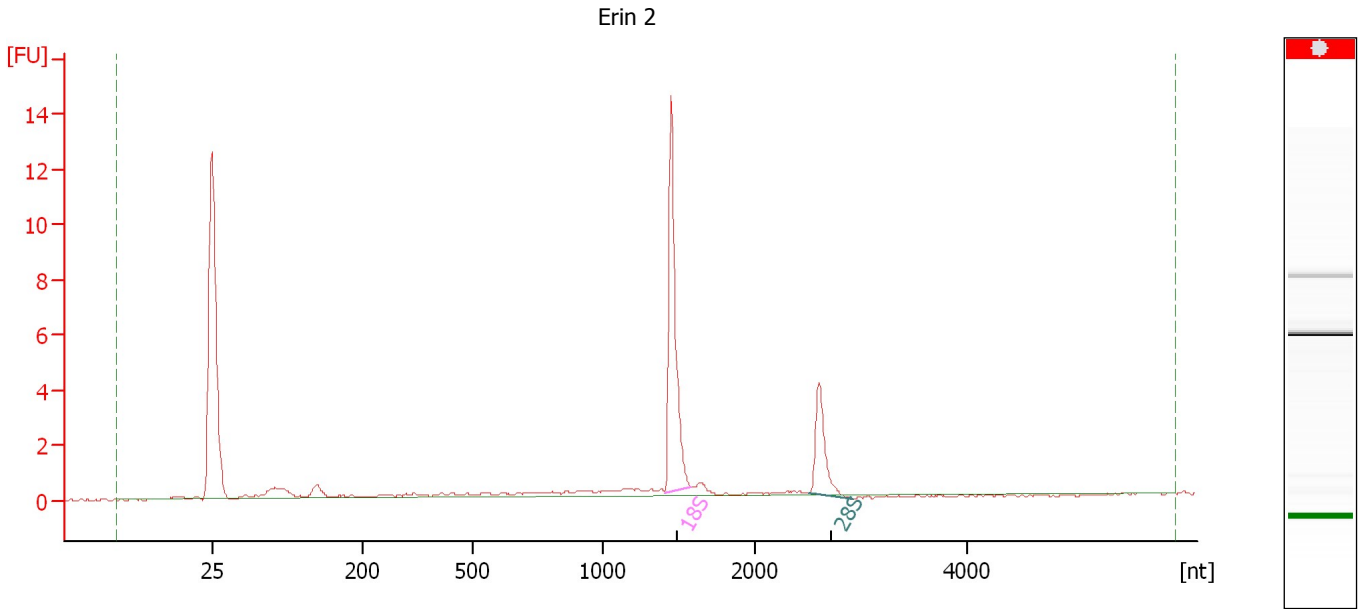
Fragment table for sample 1 : Erin 1

Name	Start Size [nt]	End Size [nt]	Area	% of total Area
18S	1,429	1,612	7.9	32.4
28S	2,552	2,874	1.9	7.9

Assay Class: Eukaryote Total RNA Nano
 Data Path: C:\...ttings\Bioanalyzer\2012-04-03\2012-04-03_003_ErinLynch2.xad

Created: 4/3/2012 3:33:41 PM
 Modified: 4/4/2012 9:19:23 AM

Electropherogram Summary Continued ...



Overall Results for sample 2 : Erin 2

RNA Area:	26.8	RNA Integrity Number (RIN):	N/A (B.02.08)
RNA Concentration:	0 ng/μl	Result Flagging Color:	
rRNA Ratio [28s / 18s]:	0.3	Result Flagging Label:	RIN N/A

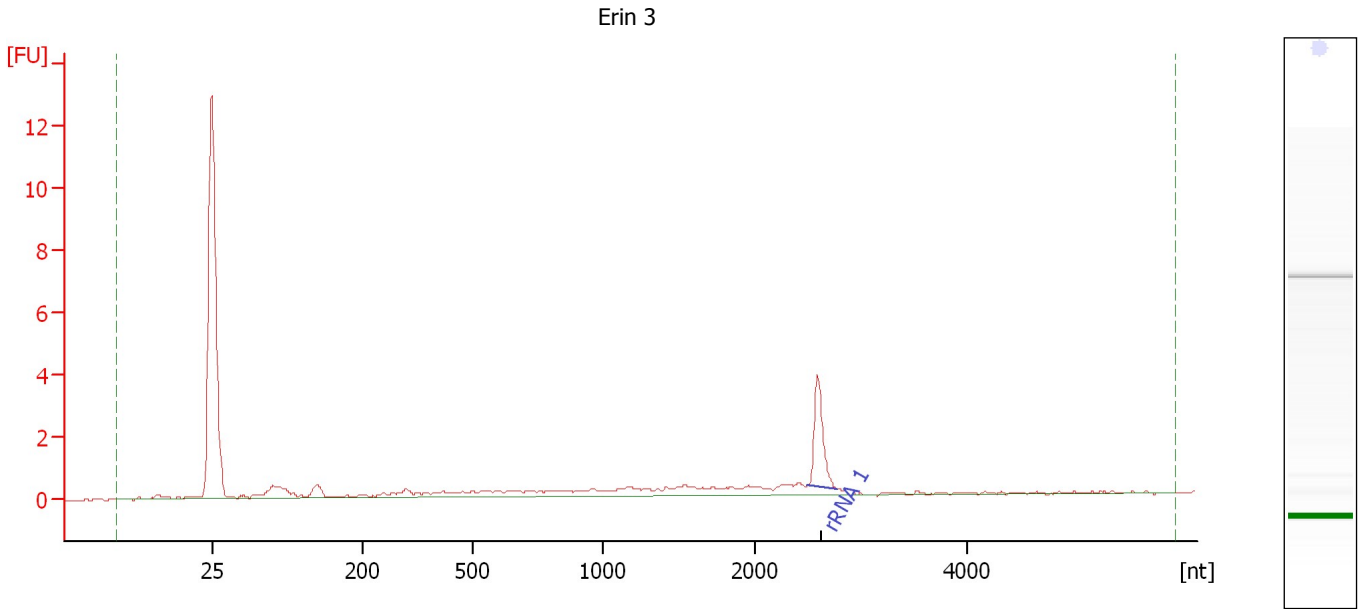
Fragment table for sample 2 : Erin 2

Name	Start Size [nt]	End Size [nt]	Area	% of total Area
18S	1,409	1,584	11.6	43.1
28S	2,510	2,922	3.7	13.8

Assay Class: Eukaryote Total RNA Nano
 Data Path: C:\...ttings\Bioanalyzer\2012-04-03\2012-04-03_003_ErinLynch2.xad

Created: 4/3/2012 3:33:41 PM
 Modified: 4/4/2012 9:19:23 AM

Electropherogram Summary Continued ...



Overall Results for sample 3 : Erin 3

RNA Area:	17.3	RNA Integrity Number (RIN):	1 (B.02.08)
RNA Concentration:	0 ng/μl	Result Flagging Color:	
rRNA Ratio [28s / 18s]:	0.0	Result Flagging Label:	RIN:1

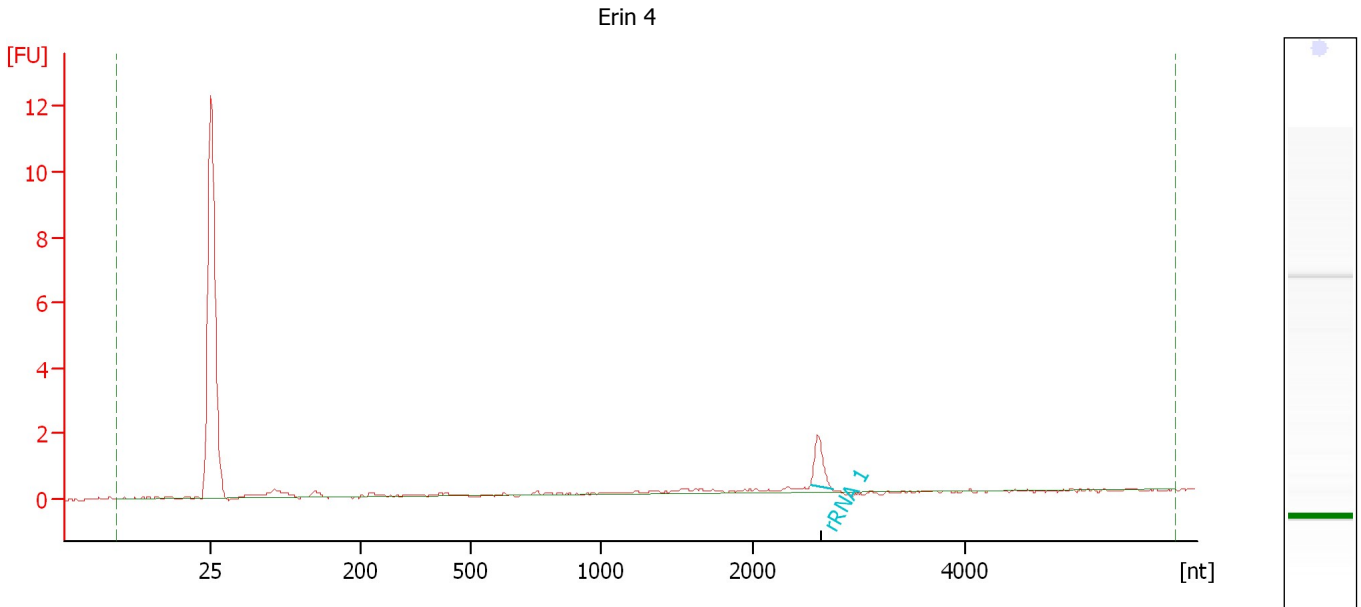
Fragment table for sample 3 : Erin 3

Name	Start Size [nt]	End Size [nt]	Area	% of total Area
rRNA 1	2,486	2,764	3.1	17.7

Assay Class: Eukaryote Total RNA Nano
 Data Path: C:\...ttings\Bioanalyzer\2012-04-03\2012-04-03_003_ErinLynch2.xad

Created: 4/3/2012 3:33:41 PM
 Modified: 4/4/2012 9:19:23 AM

Electropherogram Summary Continued ...



Overall Results for sample 4 : Erin 4

RNA Area:	7.0	RNA Integrity Number (RIN):	1 (B.02.08)
RNA Concentration:	0 ng/μl	Result Flagging Color:	
rRNA Ratio [28s / 18s]:	0.0	Result Flagging Label:	RIN:1

Fragment table for sample 4 : Erin 4

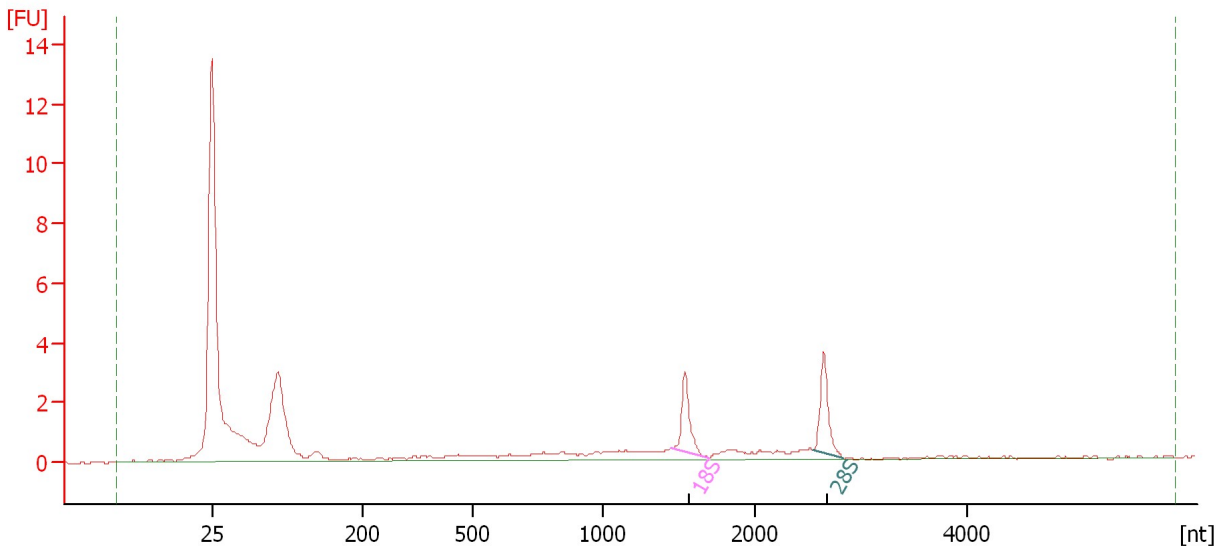
Name	Start Size [nt]	End Size [nt]	Area	% of total Area
rRNA 1	2,545	2,749	1.3	18.9

Assay Class: Eukaryote Total RNA Nano
Data Path: C:\...ttings\Bioanalyzer\2012-04-03\2012-04-03_003_ErinLynch2.xad

Created: 4/3/2012 3:33:41 PM
Modified: 4/4/2012 9:19:23 AM

Electropherogram Summary Continued ...

CTM L3 pre [<.5 ul]



Overall Results for sample 5 : CTM L3 pre

RNA Area: 33.0 RNA Integrity Number (RIN): 7.6 (B.02.08)
RNA Concentration: 0 ng/μl Result Flagging Color:
rRNA Ratio [28s / 18s]: 1.1 Result Flagging Label: RIN: 7.60

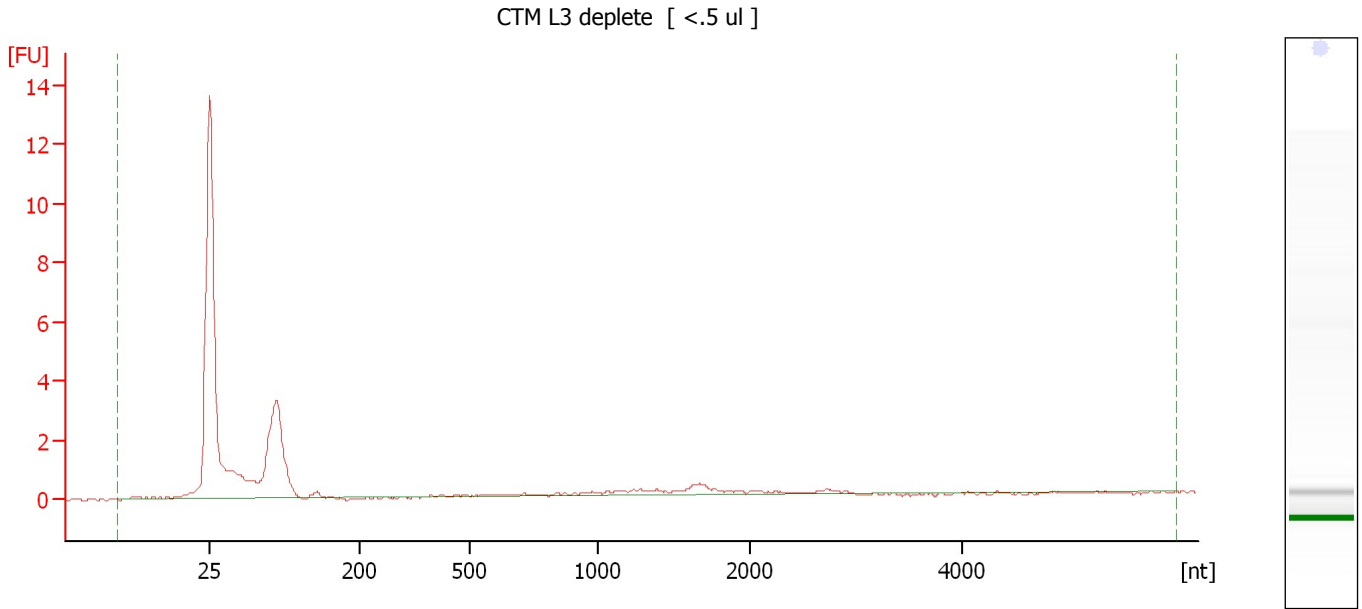
Fragment table for sample 5 : CTM L3 pre

Name	Start Size [nt]	End Size [nt]	Area	% of total Area
18S	1,451	1,697	2.5	7.7
28S	2,551	2,831	2.8	8.5

Assay Class: Eukaryote Total RNA Nano
Data Path: C:\...ttings\Bioanalyzer\2012-04-03\2012-04-03_003_ErinLynch2.xad

Created: 4/3/2012 3:33:41 PM
Modified: 4/4/2012 9:19:23 AM

Electropherogram Summary Continued ...



Overall Results for sample 6 : CTM L3 deplete

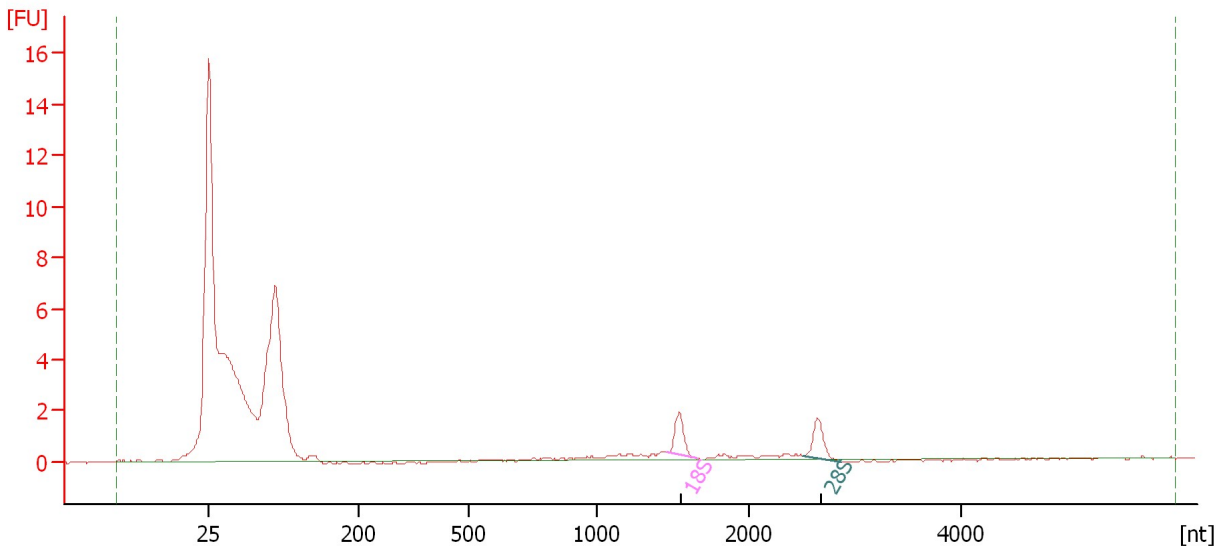
RNA Area:	19.8	RNA Integrity Number (RIN):	2.2 (B.02.08)
RNA Concentration:	0 ng/μl	Result Flagging Color:	
rRNA Ratio [28s / 18s]:	0.0	Result Flagging Label:	RIN: 2.20

Assay Class: Eukaryote Total RNA Nano
 Data Path: C:\...ttings\Bioanalyzer\2012-04-03\2012-04-03_003_ErinLynch2.xad

Created: 4/3/2012 3:33:41 PM
 Modified: 4/4/2012 9:19:23 AM

Electropherogram Summary Continued ...

CTM S3 pre [<.5 ul]



Overall Results for sample 7 : CTM S3 pre

RNA Area:	30.6	RNA Integrity Number (RIN):	N/A (B.02.08)
RNA Concentration:	0 ng/μl	Result Flagging Color:	
rRNA Ratio [28s / 18s]:	1.0	Result Flagging Label:	RIN N/A

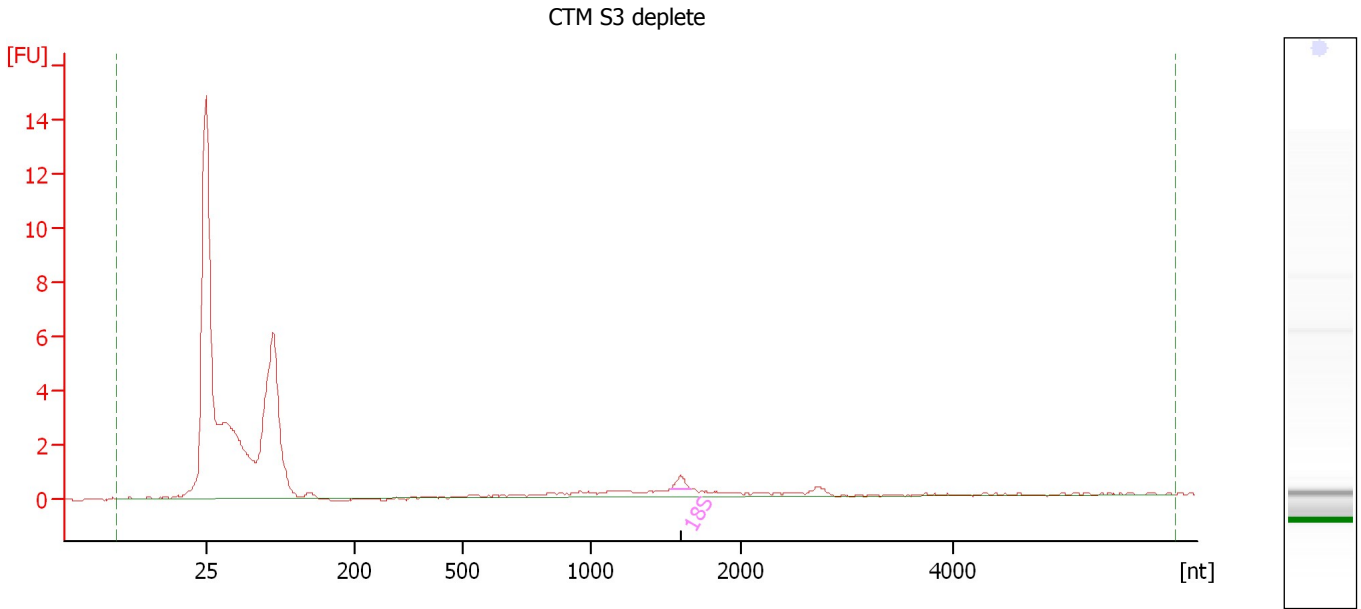
Fragment table for sample 7 : CTM S3 pre

Name	Start Size [nt]	End Size [nt]	Area	% of total Area
18S	1,463	1,654	1.7	5.4
28S	2,515	2,869	1.7	5.4

Assay Class: Eukaryote Total RNA Nano
 Data Path: C:\...ttings\Bioanalyzer\2012-04-03\2012-04-03_003_ErinLynch2.xad

Created: 4/3/2012 3:33:41 PM
 Modified: 4/4/2012 9:19:23 AM

Electropherogram Summary Continued ...



Overall Results for sample 8 : CTM S3 deplete

RNA Area:	44.0	RNA Integrity Number (RIN):	2.7 (B.02.08)
RNA Concentration:	0 ng/μl	Result Flagging Color:	
rRNA Ratio [28s / 18s]:	0.0	Result Flagging Label:	RIN: 2.70

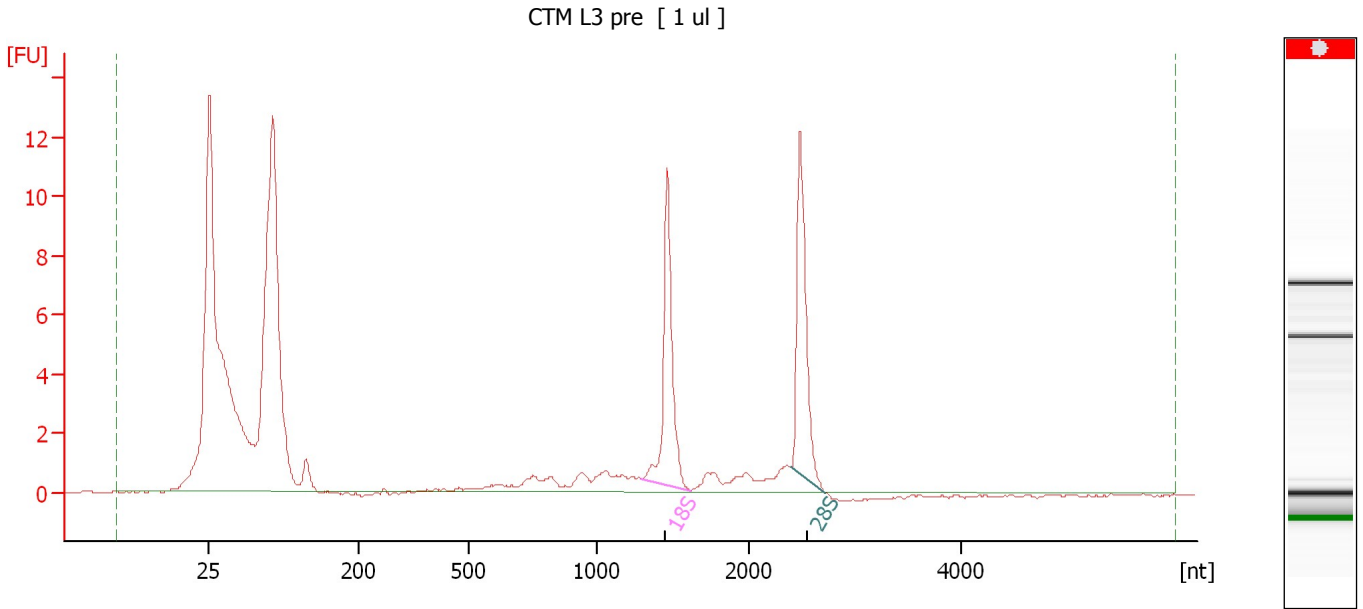
Fragment table for sample 8 : CTM S3 deplete

Name	Start Size [nt]	End Size [nt]	Area	% of total Area
18S	1,525	1,660	0.5	1.1


Assay Class: Eukaryote Total RNA Nano
Data Path: C:\...ttings\Bioanalyzer\2012-04-03\2012-04-03_003_ErinLynch2.xad

Created: 4/3/2012 3:33:41 PM
Modified: 4/4/2012 9:19:23 AM

Electropherogram Summary Continued ...



Overall Results for sample 9 : CTM L3 pre

RNA Area:	76.2	RNA Integrity Number (RIN):	N/A (B.02.08)
RNA Concentration:	0 ng/μl	Result Flagging Color:	
rRNA Ratio [28s / 18s]:	1.0	Result Flagging Label:	RIN N/A

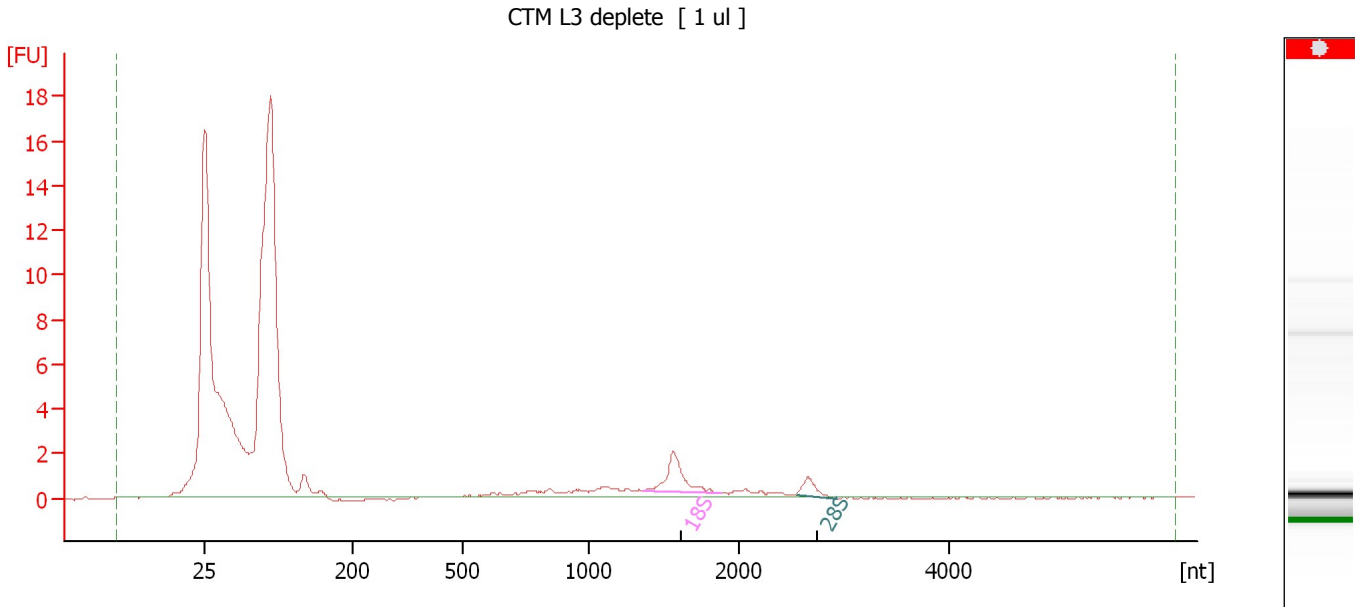
Fragment table for sample 9 : CTM L3 pre

Name	Start Size [nt]	End Size [nt]	Area	% of total Area
18S	1,293	1,618	11.0	14.4
28S	2,394	2,717	10.8	14.1

Assay Class: Eukaryote Total RNA Nano
 Data Path: C:\...ttings\Bioanalyzer\2012-04-03\2012-04-03_003_ErinLynch2.xad

Created: 4/3/2012 3:33:41 PM
 Modified: 4/4/2012 9:19:23 AM

Electropherogram Summary Continued ...



Overall Results for sample 10 : CTM L3 deplete

RNA Area:	71.3	RNA Integrity Number (RIN):	N/A (B.02.08)
RNA Concentration:	0 ng/μl	Result Flagging Color:	
rRNA Ratio [28s / 18s]:	0.3	Result Flagging Label:	RIN N/A

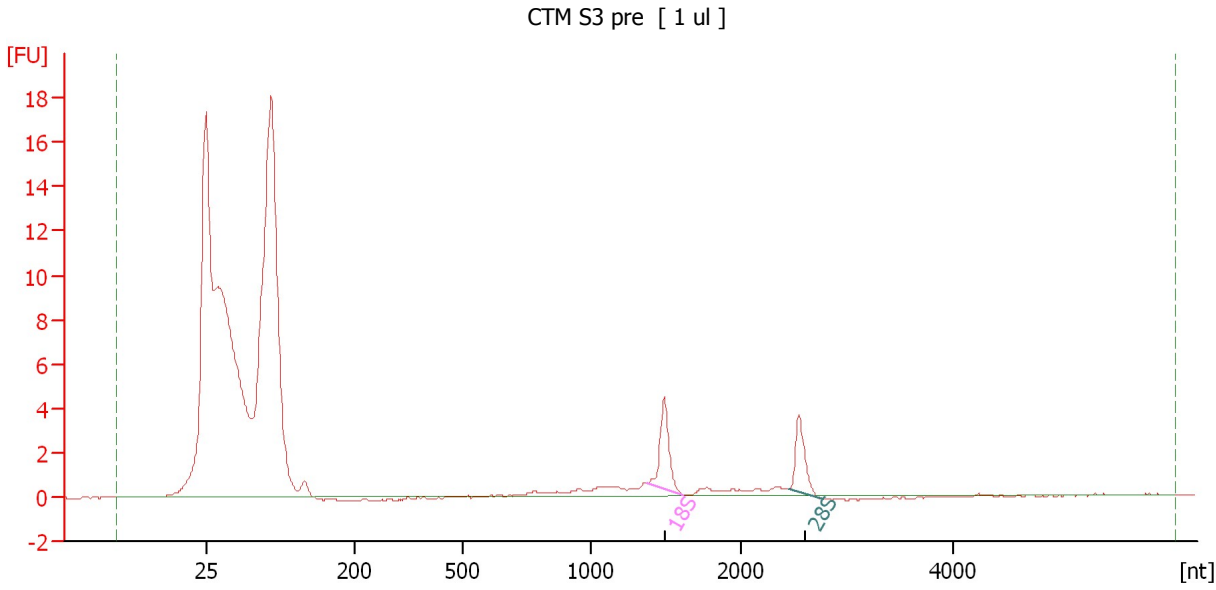
Fragment table for sample 10 : CTM L3 deplete

Name	Start Size [nt]	End Size [nt]	Area	% of total Area
18S	1,360	1,874	3.5	4.9
28S	2,543	2,919	1.1	1.5

Assay Class: Eukaryote Total RNA Nano
 Data Path: C:\...ttings\Bioanalyzer\2012-04-03\2012-04-03_003_ErinLynch2.xad

Created: 4/3/2012 3:33:41 PM
 Modified: 4/4/2012 9:19:23 AM

Electropherogram Summary Continued ...



Overall Results for sample 11 : CTM S3 pre

RNA Area:	76.1	RNA Integrity Number (RIN):	N/A (B.02.08)
RNA Concentration:	0 ng/μl	Result Flagging Color:	
rRNA Ratio [28s / 18s]:	0.8	Result Flagging Label:	RIN N/A

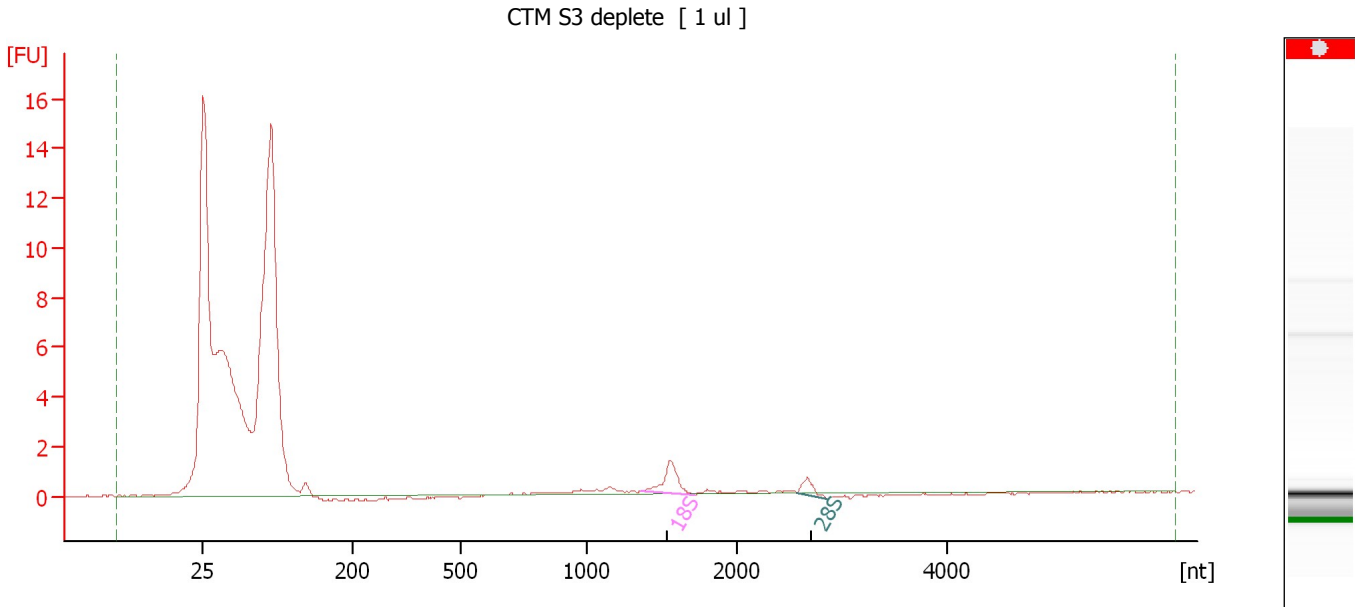
Fragment table for sample 11 : CTM S3 pre

Name	Start Size [nt]	End Size [nt]	Area	% of total Area
18S	1,368	1,603	4.3	5.7
28S	2,439	2,774	3.3	4.4

Assay Class: Eukaryote Total RNA Nano
 Data Path: C:\...ttings\Bioanalyzer\2012-04-03\2012-04-03_003_ErinLynch2.xad

Created: 4/3/2012 3:33:41 PM
 Modified: 4/4/2012 9:19:23 AM

Electropherogram Summary Continued ...



Overall Results for sample 12 : CTM S3 deplete

RNA Area:	83.0	RNA Integrity Number (RIN):	N/A (B.02.08)
RNA Concentration:	0 ng/μl	Result Flagging Color:	
rRNA Ratio [28s / 18s]:	0.3	Result Flagging Label:	RIN N/A

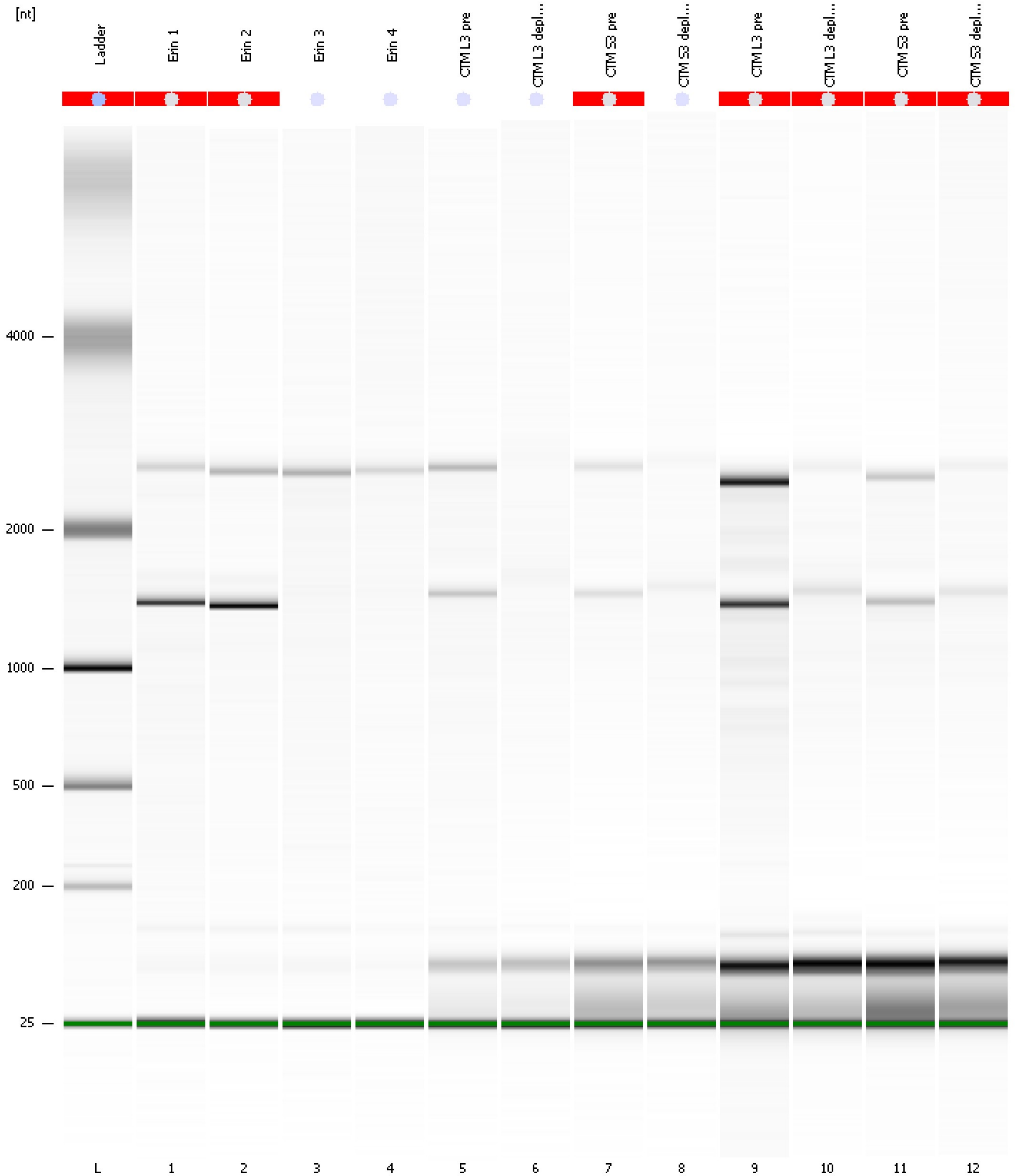
Fragment table for sample 12 : CTM S3 deplete

Name	Start Size [nt]	End Size [nt]	Area	% of total Area
18S	1,352	1,710	2.2	2.7
28S	2,575	2,861	0.7	0.9

Assay Class: Eukaryote Total RNA Nano
Data Path: C:\...ttings\Bioanalyzer\2012-04-03\2012-04-03_003_ErinLynch2.xad

Created: 4/3/2012 3:33:41 PM
Modified: 4/4/2012 9:19:23 AM

Gel Image



Assay Class: Eukaryote Total RNA Nano Created: 4/3/2012 3:33:41 PM
 Data Path: C:\...ttings\Bioanalyzer\2012-04-03\2012-04-03_003_ErinLynch2.xad Modified: 4/4/2012 9:19:23 AM

Run Logbook

Description	Number	Source	Category	Sub Category	Time	Time Zone	User	Host
Run ended on port 1 (Number of wells acquired: 13)		Instrument	Run		4/3/2012 3:56:44 PM	(GMT --07:00) Pacific Standard Time	UC Davis	D8XSMGH1
Run started on port 1 (File: C:\Documents and Settings\Bioanalyzer\2012-04-03\2012-04-03_003.xad)		Instrument	Run		4/3/2012 3:33:47 PM	(GMT --07:00) Pacific Standard Time	UC Davis	D8XSMGH1
Product Number : G2938B		Instrument	Run		4/3/2012 3:33:47 PM	(GMT --07:00) Pacific Standard Time	UC Davis	D8XSMGH1
Name :		Instrument	Run		4/3/2012 3:33:47 PM	(GMT --07:00) Pacific Standard Time	UC Davis	D8XSMGH1
Vendor : Agilent Technologies		Instrument	Run		4/3/2012 3:33:47 PM	(GMT --07:00) Pacific Standard Time	UC Davis	D8XSMGH1
Serial# : DE13701086		Instrument	Run		4/3/2012 3:33:47 PM	(GMT --07:00) Pacific Standard Time	UC Davis	D8XSMGH1
Firmware : C.01.069		Instrument	Run		4/3/2012 3:33:47 PM	(GMT --07:00) Pacific Standard Time	UC Davis	D8XSMGH1
Cartridge : Electrode		Instrument	Run		4/3/2012 3:33:47 PM	(GMT --07:00) Pacific Standard Time	UC Davis	D8XSMGH1