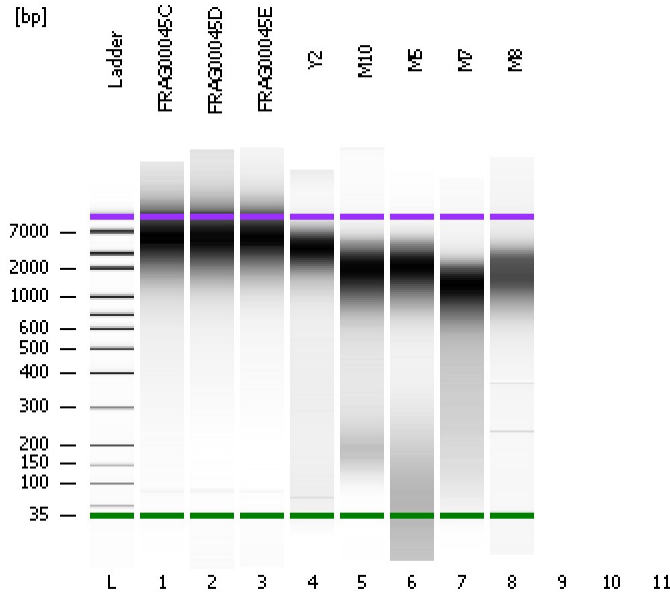


Assay Class: High Sensitivity DNA Assay
Data Path: C:\...ents and Settings\Bioanalyzer\2012-04-03\2012-04-03_004.xad

Created: 4/3/2012 4:26:24 PM
Modified: 4/3/2012 5:01:31 PM

Electrophoresis File Run Summary



Instrument Information:

Instrument Name: DE13701086 Firmware: C.01.069
Serial#: DE13701086 Type: G2938B

Assay Information:

Assay Origin Path: C:\Program Files\Agilent\2100 bioanalyzer\2100 expert\assays\dsDNA\High Sensitivity DNA.xsy
Assay Class: High Sensitivity DNA Assay
Version: 1.03
Assay Comments: Copyright © 2003-2010 Agilent Technologies

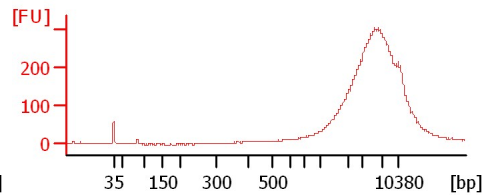
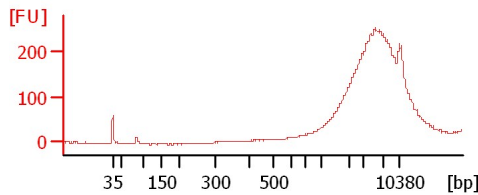
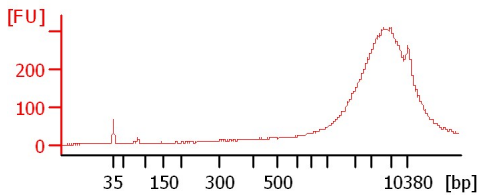
Chip Information:

Chip Lot #:
Reagent Kit Lot #:
Chip Comments:

FRAG00045C

FRAG00045D

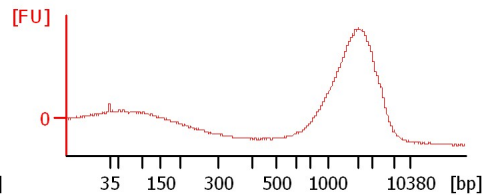
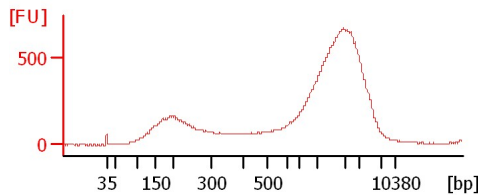
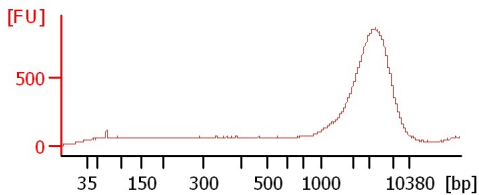
FRAG00045E



Y2

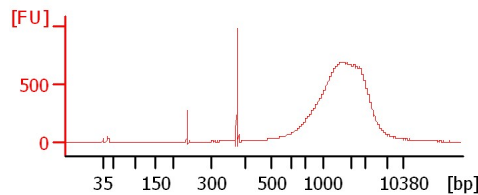
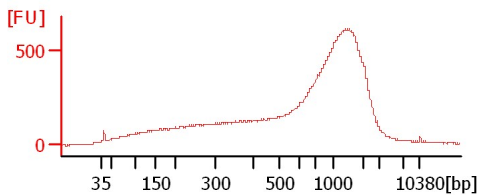
M10

M5



M7

M8



Assay Class: High Sensitivity DNA Assay
 Data Path: C:\...ents and Settings\Bioanalyzer\2012-04-03\2012-04-03_004.xad

Created: 4/3/2012 4:26:24 PM
 Modified: 4/3/2012 5:01:31 PM

Electrophoresis File Run Summary (Chip Summary)

Sample Name	Sample Comment	Rest. Digest	Status	Observation	Result Label	Result Color
FRAG00045C		<input type="checkbox"/>	✓			
FRAG00045D		<input type="checkbox"/>	✓			
FRAG00045E		<input type="checkbox"/>	✓			
Y2		<input type="checkbox"/>	✓			
M10		<input type="checkbox"/>	✓			
M5		<input type="checkbox"/>	✓			
M7		<input type="checkbox"/>	✓			
M8		<input type="checkbox"/>	✓			
		<input type="checkbox"/>				
		<input type="checkbox"/>				
		<input type="checkbox"/>				
Ladder		<input type="checkbox"/>	✓			

Chip Lot # **Reagent Kit Lot #**

Chip Comments :

Assay Class: High Sensitivity DNA Assay
Data Path: C:\...ents and Settings\Bioanalyzer\2012-04-03\2012-04-03_004.xad

Created: 4/3/2012 4:26:24 PM
Modified: 4/3/2012 5:01:31 PM

Electrophoresis Assay Details

General Analysis Settings

Number of Available Sample and Ladder Wells (Max.) : 12
Minimum Visible Range [s] : 32
Maximum Visible Range [s] : 138
Start Analysis Time Range [s] : 33
End Analysis Time Range [s] : 137.5
Ladder Concentration [pg/μl] : 1950
Uses Standard Area for Ladder Fragments
Lower Marker Concentration [pg/μl] : 125
Upper Marker Concentration [pg/μl] : 75
Used Upper Marker for Quantitation
Standard Curve Fit is Point to Point
Show Data Aligned to Lower and Upper Marker

Integrator Settings

Integration Start Time [s] : 33.05
Integration End Time [s] : 137
Slope Threshold : 0.8
Height Threshold [FU] : 5
Area Threshold : 0.1
Width Threshold [s] : 0.6
Baseline Plateau [s] : 0.5

Filter Settings

Filter Width [s] : 0.5
Polynomial Order : 4

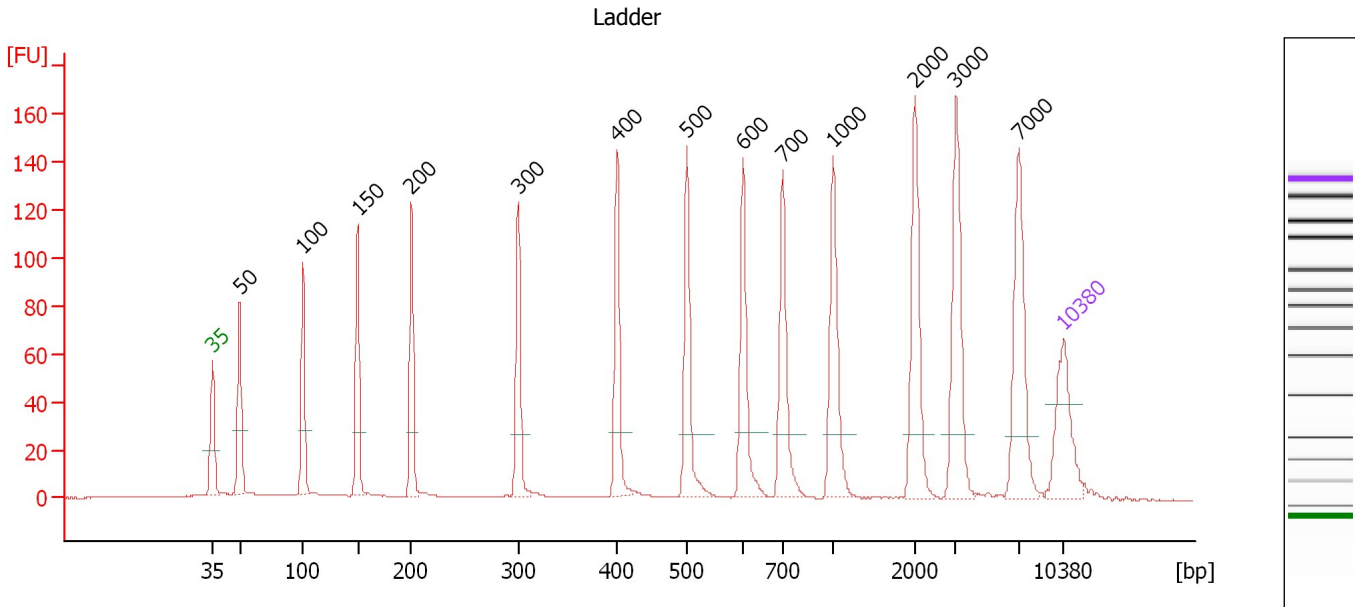
Ladder

Ladder Peak	Size	Area
1	35	160
2	50	210
3	100	208
4	150	221
5	200	242
6	300	270
7	400	305
8	500	306
9	600	336
10	700	321
11	1000	366
12	2000	413
13	3000	411
14	7000	400
15	10380	214

Assay Class: High Sensitivity DNA Assay
 Data Path: C:\...ents and Settings\Bioanalyzer\2012-04-03\2012-04-03_004.xad

Created: 4/3/2012 4:26:24 PM
 Modified: 4/3/2012 5:01:31 PM

Electropherogram Summary



Overall Results for Ladder

Noise: 0.1

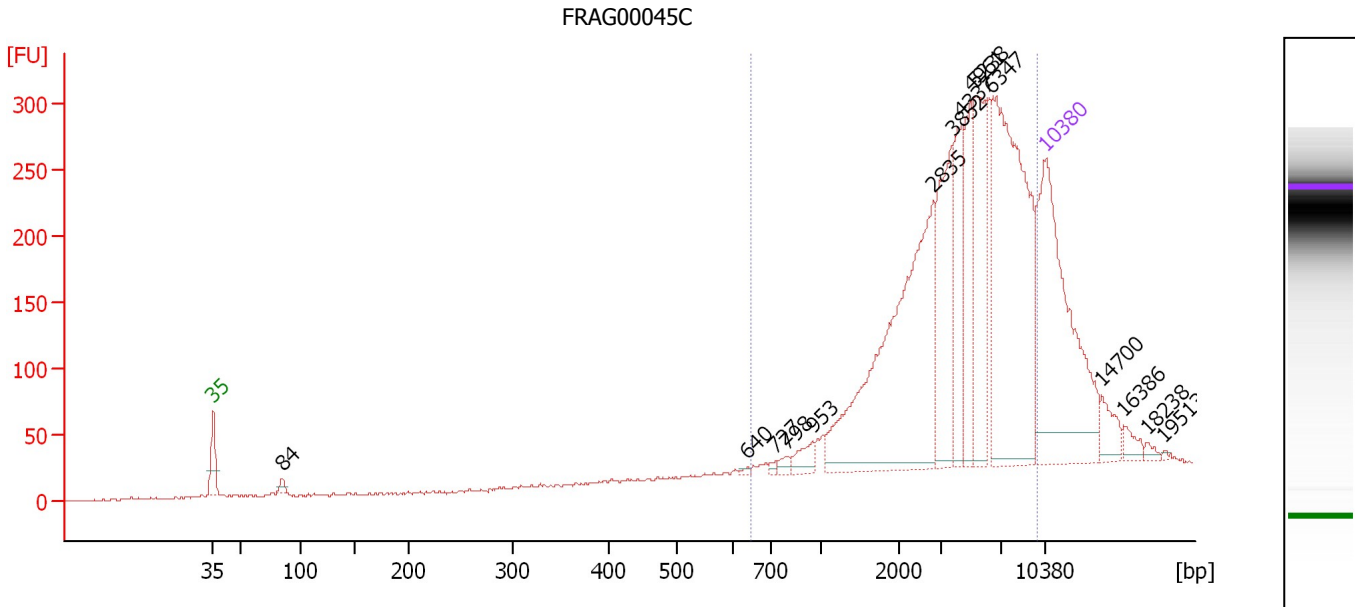
Peak table for Ladder

Peak	Size [bp]	Conc. [pg/μl]	Molarity [pmol/l]	Observations
1	35	125.00	5,411.3	Lower Marker
2	50	150.00	4,545.5	Ladder Peak
3	100	150.00	2,272.7	Ladder Peak
4	150	150.00	1,515.2	Ladder Peak
5	200	150.00	1,136.4	Ladder Peak
6	300	150.00	757.6	Ladder Peak
7	400	150.00	568.2	Ladder Peak
8	500	150.00	454.5	Ladder Peak
9	600	150.00	378.8	Ladder Peak
10	700	150.00	324.7	Ladder Peak
11	1,000	150.00	227.3	Ladder Peak
12	2,000	150.00	113.6	Ladder Peak
13	3,000	150.00	75.8	Ladder Peak
14	7,000	150.00	32.5	Ladder Peak
15	10,380	75.00	10.9	Upper Marker

Assay Class: High Sensitivity DNA Assay
 Data Path: C:\...ents and Settings\Bioanalyzer\2012-04-03\2012-04-03_004.xad

Created: 4/3/2012 4:26:24 PM
 Modified: 4/3/2012 5:01:31 PM

Electropherogram Summary Continued ...



Overall Results for sample 1 : FRAG00045C

Number of peaks found: 15 Corr. Area 1: 3,052.7
 Noise: 0.7

Peak table for sample 1 : FRAG00045C

Peak	Size [bp]	Conc. [pg/μl]	Molarity [pmol/l]	Observations
1	35	125.00	5,411.3	Lower Marker
2	84	2.53	45.4	
3	640	0.85	2.0	
4	727	1.20	2.5	
5	798	2.04	3.9	
6	953	5.46	8.7	
7	2,835	107.83	57.6	
8	3,852	40.62	16.0	
9	4,337	24.98	8.7	
10	4,961	23.34	7.1	
11	5,238	35.69	10.3	
12	6,347	102.87	24.6	
13	10,380	75.00	10.9	Upper Marker
14	14,700	0.00	0.0	
15	16,386	0.00	0.0	
16	18,238	0.00	0.0	
17	19,513	0.00	0.0	

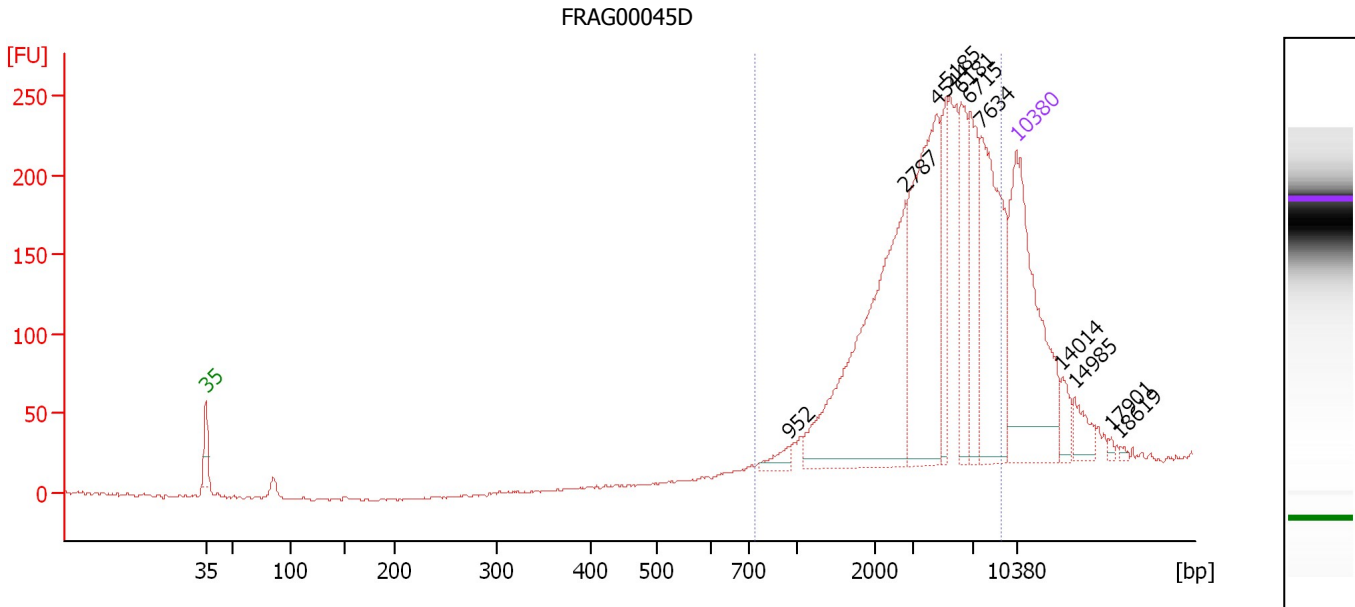
Region table for sample 1 : FRAG00045C

From [bp]	Molarity [pmol/l]	Average Size [bp]	Conc. [pg/μl]	To [bp]	Corr. Area	% of Total	Size distribution in CV [%]	Color
650	183.1	4,685	370.49	9,760	3,052.7	94	53.3	Blue

Assay Class: High Sensitivity DNA Assay
 Data Path: C:\...ents and Settings\Bioanalyzer\2012-04-03\2012-04-03_004.xad

Created: 4/3/2012 4:26:24 PM
 Modified: 4/3/2012 5:01:31 PM

Electropherogram Summary Continued ...



Overall Results for sample 2 : FRAG00045D

Number of peaks found: 11 Corr. Area 1: 2,367.3
 Noise: 0.8

Peak table for sample 2 : FRAG00045D

Peak	Size [bp]	Conc. [pg/μl]	Molarity [pmol/l]	Observations
1	35	125.00	5,411.3	Lower Marker
2	952	5.02	8.0	
3	2,787	115.00	62.5	
4	4,544	89.33	29.8	
5	5,185	22.36	6.5	
6	6,181	28.49	7.0	
7	6,715	31.66	7.1	
8	7,634	66.37	13.2	
9	10,380	75.00	10.9	Upper Marker
10	14,014	0.00	0.0	
11	14,985	0.00	0.0	
12	17,901	0.00	0.0	
13	18,619	0.00	0.0	

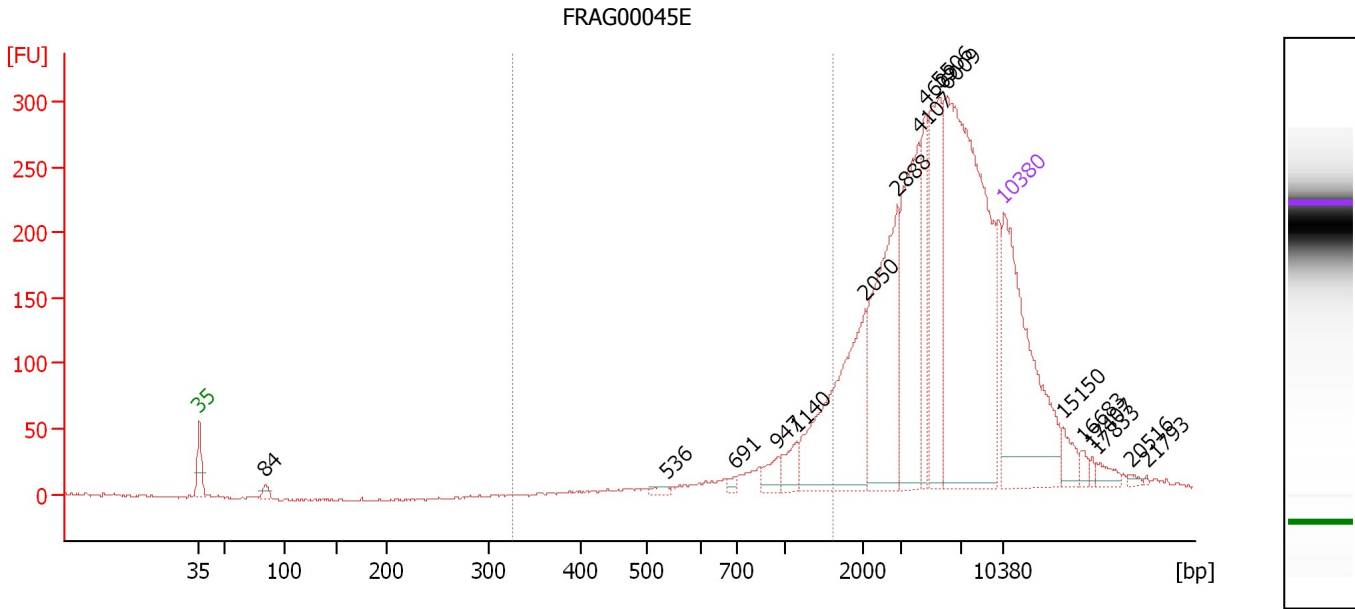
Region table for sample 2 : FRAG00045D

From [bp]	Molarity [pmol/l]	Average Size [bp]	Conc. [pg/μl]	To [bp]	Corr. Area	% of Total	Size distribution in CV [%]	Color
740	179.4	4,561	385.04	9,251	2,367.3	92	50.8	Blue

Assay Class: High Sensitivity DNA Assay
 Data Path: C:\...ents and Settings\Bioanalyzer\2012-04-03\2012-04-03_004.xad

Created: 4/3/2012 4:26:24 PM
 Modified: 4/3/2012 5:01:31 PM

Electropherogram Summary Continued ...



Overall Results for sample 3 : FRAG00045E

Number of peaks found: 17 Corr. Area 1: 331.1
 Noise: 0.9

Peak table for sample 3 : FRAG00045E

Peak	Size [bp]	Conc. [pg/μl]	Molarity [pmol/l]	Observations
1	35	125.00	5,411.3	Lower Marker
2	84	3.59	64.8	
3	536	2.10	5.9	
4	691	1.84	4.0	
5	947	6.57	10.5	
6	1,140	8.86	11.8	
7	2,050	68.97	51.0	
8	2,888	69.82	36.6	
9	4,107	60.90	22.5	
10	4,609	24.89	8.2	
11	5,506	52.42	14.4	
12	6,009	164.06	41.4	
13	10,380	75.00	10.9	Upper Marker
14	15,150	0.00	0.0	
15	16,683	0.00	0.0	
16	17,407	0.00	0.0	
17	17,833	0.00	0.0	
18	20,516	0.00	0.0	
19	21,793	0.00	0.0	

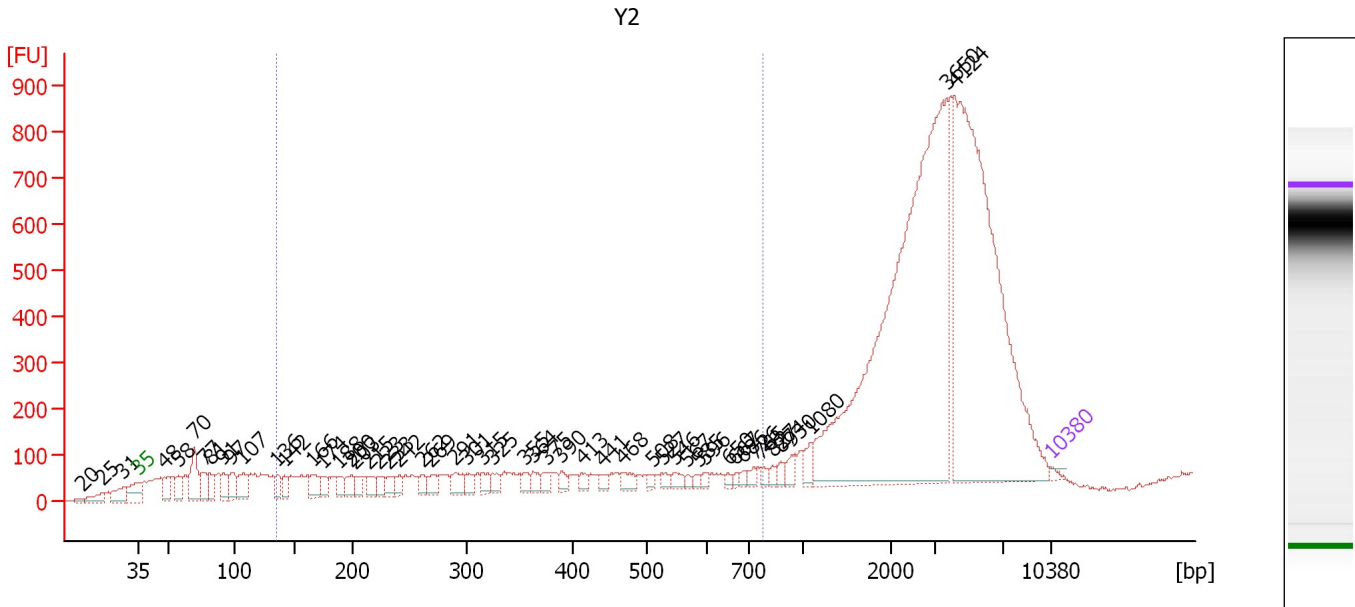
Region table for sample 3 : FRAG00045E

From [bp]	Molarity [pmol/l]	Average Size [bp]	Conc. [pg/μl]	To [bp]	Corr. Area	% of Total	Size distribution in CV [%]	Color
326	80.2	1,138	53.37	1,606	331.1	10	27.9	Blue

Assay Class: High Sensitivity DNA Assay
 Data Path: C:\...ents and Settings\Bioanalyzer\2012-04-03\2012-04-03_004.xad

Created: 4/3/2012 4:26:24 PM
 Modified: 4/3/2012 5:01:31 PM

Electropherogram Summary Continued ...



Overall Results for sample 4 : Y2

Number of peaks found: 52 Corr. Area 1: 2,098.6
 Noise: 3.7

Peak table for sample 4 : Y2


Peak	Size [bp]	Conc. [pg/μl]	Molarity [pmol/l]	Observations
1	20	0.00	0.0	
2	25	0.00	0.0	
3	31	0.00	0.0	
4	35	125.00	5,411.3	Lower Marker
5	48	725.63	22,824.8	
6	58	589.77	15,397.8	
7	70	1,428.15	30,960.5	
8	77	704.96	13,942.4	
9	81	582.14	10,842.0	
10	91	611.90	10,162.0	
11	97	712.78	11,115.1	
12	107	799.14	11,346.6	
13	136	431.69	4,820.3	
14	142	410.26	4,390.5	
15	166	580.82	5,305.1	
16	174	365.96	3,183.1	
17	188	392.64	3,163.5	
18	200	397.00	3,013.7	
19	203	348.17	2,594.5	
20	215	370.17	2,603.2	
21	223	330.36	2,240.8	
22	233	320.46	2,086.5	
23	242	358.47	2,248.4	
24	262	246.58	1,425.5	
25	269	390.61	2,199.4	
26	291	510.10	2,660.1	

Assay Class: High Sensitivity DNA Assay
 Data Path: C:\...ents and Settings\Bioanalyzer\2012-04-03\2012-04-03_004.xad


Created: 4/3/2012 4:26:24 PM
 Modified: 4/3/2012 5:01:31 PM

Electropherogram Summary Continued ...

... Peak table for sample 4 : Y2

Peak	Size [bp]	Conc. [pg/µl]	Molarity [pmol/l]	Observations
27	301	333.58	1,679.9	
28	315	287.36	1,382.6	
29	325	319.59	1,487.9	
30	355	235.21	1,003.8	
31	364	271.06	1,129.7	
32	375	264.80	1,069.7	
33	390	230.32	895.7	
34	413	221.93	814.1	
35	441	180.12	619.1	
36	468	330.71	1,071.0	
37	508	118.53	353.6	
38	527	189.43	545.1	
39	546	225.71	626.3	
40	567	97.19	259.5	
41	585	133.17	344.8	
42	596	112.10	285.1	
43	650	118.24	275.8	
44	667	100.06	227.2	
45	686	109.90	242.7	
46	726	177.42	370.0	
47	765	146.02	289.3	
48	827	137.25	251.6	
49	874	189.56	328.7	
50	930	257.10	419.0	
51	1,080	307.55	431.5	
52	3,650	16,590.93	6,887.1	
53	4,124	12,767.09	4,690.3	
54	 10,380	75.00	10.9	Upper Marker

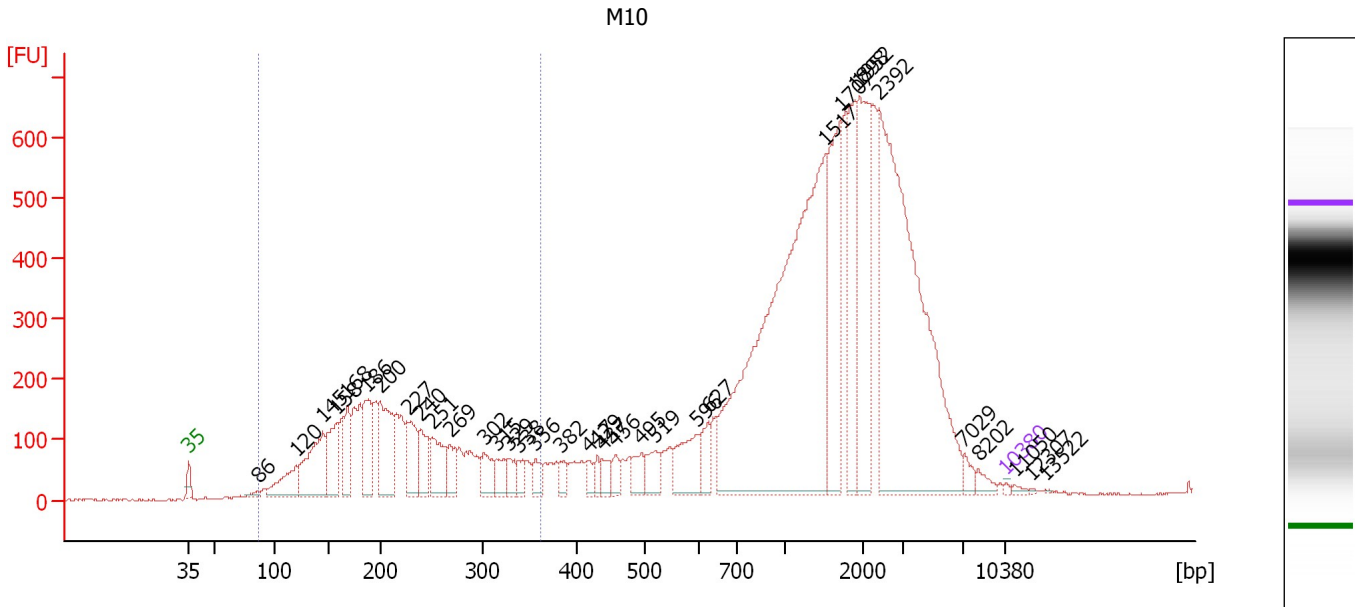
Region table for sample 4 : Y2

From [bp]	Molarity [pmol/l]	Average Size [bp]	Conc. [pg/µl]	To [bp]	Corr. Area	% of Total	Size distribution in CV [%]	Color
136	69,802.1	354	11,894.95	774	2,098.6	18	44.6	

Assay Class: High Sensitivity DNA Assay
 Data Path: C:\...ents and Settings\Bioanalyzer\2012-04-03\2012-04-03_004.xad

Created: 4/3/2012 4:26:24 PM
 Modified: 4/3/2012 5:01:31 PM

Electropherogram Summary Continued ...



Overall Results for sample 5 : M10

Number of peaks found: 35 Corr. Area 1: 3,661.8
 Noise: 2.4

Peak table for sample 5 : M10

Peak	Size [bp]	Conc. [pg/μl]	Molarity [pmol/l]	Observations
1	35	125.00	5,411.3	Lower Marker
2	86	287.31	5,077.3	
3	120	2,728.39	34,435.3	
4	145	5,498.32	57,327.8	
5	158	3,659.34	35,066.9	
6	168	2,443.85	21,985.7	
7	186	3,330.62	27,064.6	
8	200	5,016.38	37,931.4	
9	227	2,598.72	17,311.6	
10	240	2,101.35	13,269.5	
11	251	2,791.97	16,827.4	
12	269	1,448.06	8,153.6	
13	302	1,454.85	7,298.4	
14	315	1,069.01	5,143.6	
15	329	913.01	4,206.1	
16	338	782.32	3,502.7	
17	356	807.72	3,440.0	
18	382	601.60	2,389.3	
19	417	573.38	2,085.1	
20	429	519.45	1,833.0	
21	437	776.32	2,689.6	
22	456	652.98	2,167.8	
23	495	1,037.87	3,174.7	
24	519	1,295.04	3,780.9	
25	596	2,496.31	6,342.8	
26	627	1,221.80	2,951.9	

Assay Class: High Sensitivity DNA Assay
 Data Path: C:\...ents and Settings\Bioanalyzer\2012-04-03\2012-04-03_004.xad


Created: 4/3/2012 4:26:24 PM
 Modified: 4/3/2012 5:01:31 PM

Electropherogram Summary Continued ...

... Peak table for sample 5 : M10

Peak	Size [bp]	Conc. [pg/μl]	Molarity [pmol/l]	Observations
27	1,517	28,407.31	28,376.6	
28	1,707	6,408.31	5,687.0	
29	1,898	3,985.08	3,181.5	
30	1,952	7,206.56	5,593.0	
31	2,392	20,541.22	13,011.7	
32	7,029	472.83	101.9	
33	8,202	380.84	70.4	
34	10,380	75.00	10.9	Upper Marker
35	11,050	0.00	0.0	
36	12,307	0.00	0.0	
37	13,522	0.00	0.0	

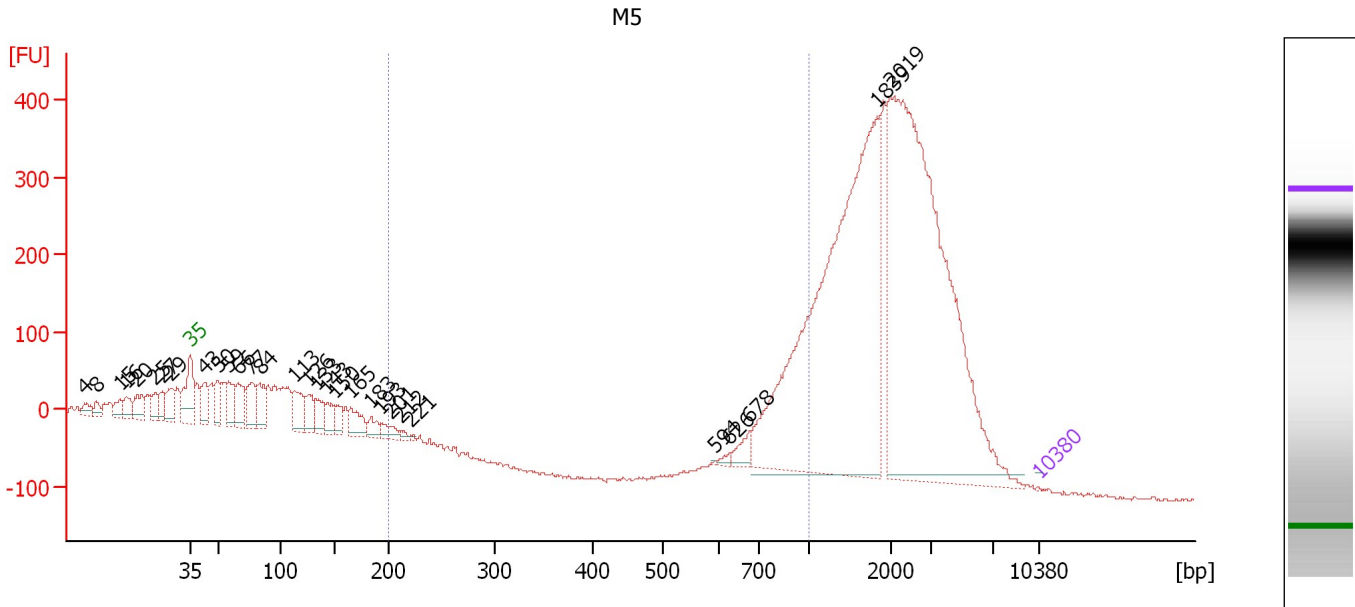
Region table for sample 5 : M10

From [bp]	Molarity [pmol/l]	Average Size [bp]	Conc. [pg/μl]	To [bp]	Corr. Area	% of Total	Size distribution in CV [%]	Color
86	400,181.2	218	50,572.48	361	3,661.8	27	29.4	

Assay Class: High Sensitivity DNA Assay
 Data Path: C:\...ents and Settings\Bioanalyzer\2012-04-03\2012-04-03_004.xad

Created: 4/3/2012 4:26:24 PM
 Modified: 4/3/2012 5:01:31 PM

Electropherogram Summary Continued ...



Overall Results for sample 6 : M5

Number of peaks found: 30 Corr. Area 1: 689.9
 Noise: 2.3

Peak table for sample 6 : M5


Peak	Size [bp]	Conc. [pg/µl]	Molarity [pmol/l]	Observations
1	4	0.00	0.0	
2	8	0.00	0.0	
3	15	0.00	0.0	
4	16	0.00	0.0	
5	20	0.00	0.0	
6	25	0.00	0.0	
7	27	0.00	0.0	
8	29	0.00	0.0	
9	35	125.00	5,411.3	Lower Marker
10	43	8,380.36	297,634.1	
11	50	7,276.91	220,332.9	
12	59	8,766.22	225,289.7	
13	66	9,939.06	227,573.5	
14	77	10,007.65	197,472.4	
15	84	9,860.99	178,765.1	
16	113	10,695.08	143,042.1	
17	126	7,320.41	87,737.3	
18	133	6,093.47	69,553.4	
19	143	5,515.94	58,463.0	
20	150	4,543.07	45,812.1	
21	165	7,230.23	66,539.6	
22	183	3,732.38	30,820.7	
23	193	1,895.87	14,852.4	
24	201	1,905.27	14,336.8	
25	212	1,045.71	7,478.1	
26	221	458.05	3,134.8	

Assay Class: High Sensitivity DNA Assay
 Data Path: C:\...ents and Settings\Bioanalyzer\2012-04-03\2012-04-03_004.xad


Created: 4/3/2012 4:26:24 PM
 Modified: 4/3/2012 5:01:31 PM

Electropherogram Summary Continued ...

... Peak table for sample 6 : M5

Peak	Size [bp]	Conc. [pg/μl]	Molarity [pmol/l]	Observations
27	594	152.13	387.9	
28	626	957.82	2,320.0	
29	678	3,677.84	8,214.8	
30	1,839	130,744.55	107,696.4	
31	2,019	133,872.63	100,454.2	
32	 10,380	75.00	10.9	Upper Marker

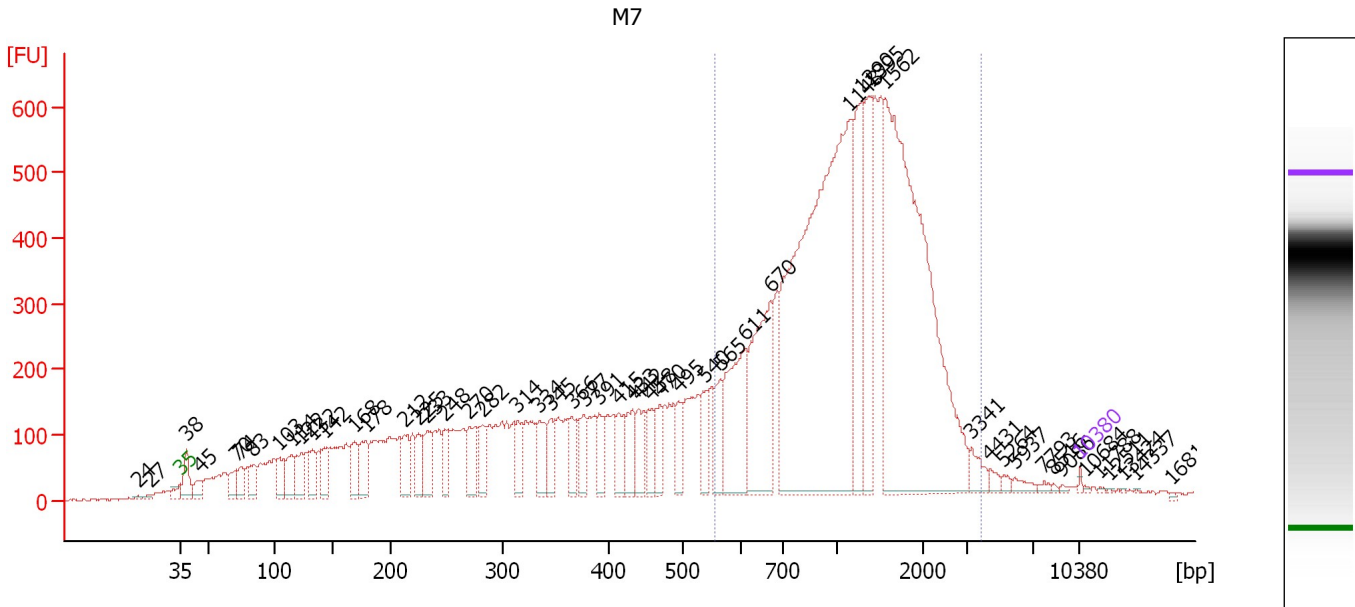
Region table for sample 6 : M5

From [bp]	Molarity [pmol/l]	Average Size [bp]	Conc. [pg/μl]	To [bp]	Corr. Area	% of Total	Size distribution in CV [%]	Color
200	78,202.2	840	39,554.45	1,000	689.9	9	15.4	

Assay Class: High Sensitivity DNA Assay
 Data Path: C:\...ents and Settings\Bioanalyzer\2012-04-03\2012-04-03_004.xad

Created: 4/3/2012 4:26:24 PM
 Modified: 4/3/2012 5:01:31 PM

Electropherogram Summary Continued ...



Overall Results for sample 7 : M7

Number of peaks found: 53 Corr. Area 1: 8,628.5
 Noise: 1.4

Peak table for sample 7 : M7


Peak	Size [bp]	Conc. [pg/μl]	Molarity [pmol/l]	Observations
1	24	0.00	0.0	
2	27	0.00	0.0	
3	35	125.00	5,411.3	Lower Marker
4	38	1,783.60	70,491.3	
5	45	896.77	30,001.3	
6	70	1,056.92	22,728.8	
7	74	967.38	19,898.0	
8	83	1,187.07	21,597.7	
9	103	1,449.20	21,249.7	
10	114	1,656.80	22,041.8	
11	122	1,587.11	19,686.6	
12	132	1,276.44	14,675.0	
13	142	1,312.38	13,969.3	
14	168	1,701.46	15,308.1	
15	178	1,880.78	15,988.3	
16	212	1,563.60	11,172.1	
17	225	1,250.14	8,425.2	
18	233	1,851.94	12,050.3	
19	248	1,263.34	7,704.2	
20	270	1,982.40	11,116.2	
21	282	1,507.10	8,110.4	
22	314	1,450.67	7,006.4	
23	334	1,729.00	7,842.4	
24	345	1,376.22	6,040.0	
25	366	1,253.41	5,195.1	
26	377	1,240.29	4,981.4	

Assay Class: High Sensitivity DNA Assay
 Data Path: C:\...ents and Settings\Bioanalyzer\2012-04-03\2012-04-03_004.xad


Created: 4/3/2012 4:26:24 PM
 Modified: 4/3/2012 5:01:31 PM

Electropherogram Summary Continued ...

... Peak table for sample 7 : M7

Peak	Size [bp]	Conc. [pg/μl]	Molarity [pmol/l]	Observations
27	391	1,377.77	5,332.3	
28	415	1,277.54	4,668.6	
29	433	1,524.65	5,330.4	
30	442	1,456.23	4,991.4	
31	458	1,296.27	4,289.1	
32	470	1,165.85	3,756.9	
33	495	1,279.49	3,918.6	
34	540	1,419.08	3,979.9	
35	565	1,486.23	3,988.7	
36	611	4,846.39	12,017.1	
37	670	6,275.99	14,196.5	
38	1,148	25,823.27	34,090.6	
39	1,290	4,787.12	5,623.3	
40	1,395	4,329.24	4,702.4	
41	1,562	21,172.53	20,540.8	
42	3,341	656.41	297.7	
43	4,431	248.37	84.9	
44	5,264	168.76	48.6	
45	5,937	285.77	72.9	
46	7,793	118.33	23.0	
47	8,516	50.81	9.0	
48	9,086	68.96	11.5	
49	 10,380	75.00	10.9	Upper Marker
50	10,684	0.00	0.0	
51	11,788	0.00	0.0	
52	12,511	0.00	0.0	
53	13,424	0.00	0.0	
54	14,337	0.00	0.0	
55	16,810	0.00	0.0	

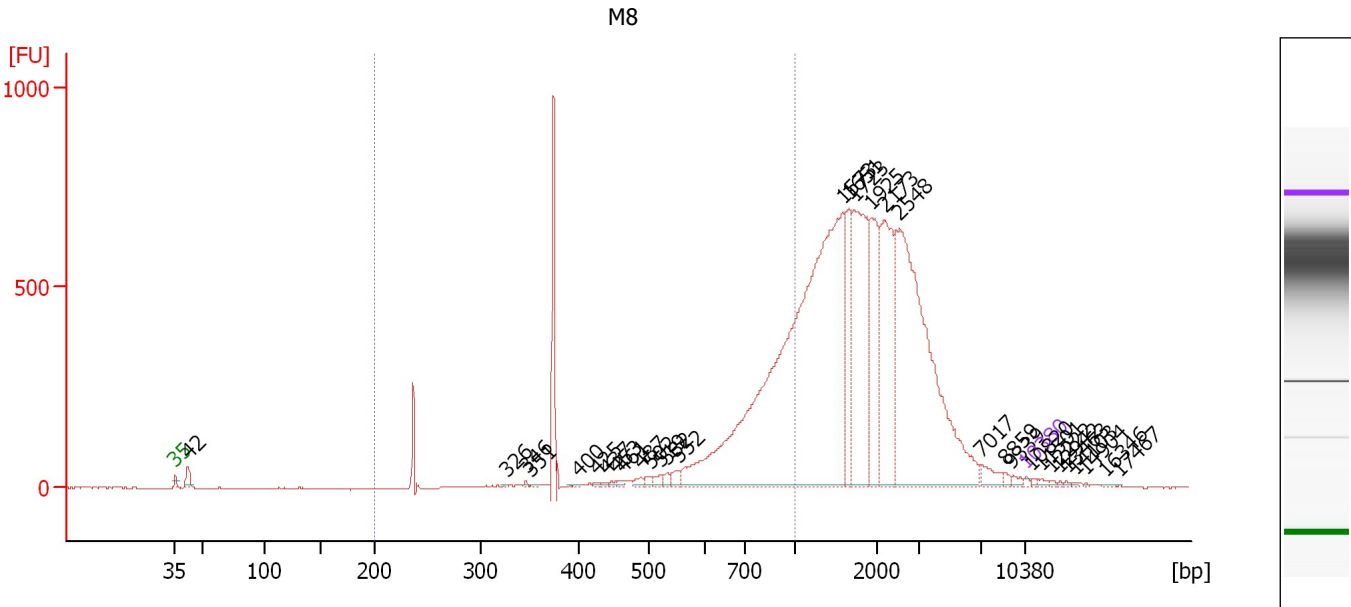
Region table for sample 7 : M7

From [bp]	Molarity [pmol/l]	Average Size [bp]	Conc. [pg/μl]	To [bp] Corr. Area	% of Total	Size distribution in CV [%]	Color
554	113,461.6	1,294	77,486.02	3,866 8,628.5	55	44.7	

Assay Class: High Sensitivity DNA Assay
 Data Path: C:\...ents and Settings\Bioanalyzer\2012-04-03\2012-04-03_004.xad

Created: 4/3/2012 4:26:24 PM
 Modified: 4/3/2012 5:01:31 PM

Electropherogram Summary Continued ...



Overall Results for sample 8 : M8

Number of peaks found: 32 Corr. Area 1: 2,703.1
 Noise: 1.4

Peak table for sample 8 : M8

Peak	Size [bp]	Conc. [pg/μl]	Molarity [pmol/l]	Observations
1	35	125.00	5,411.3	Lower Marker
2	42	549.28	19,804.1	
3	326	32.96	153.3	
4	346	61.56	269.5	
5	351	52.12	224.7	
6	400	57.60	218.4	
7	425	78.49	279.7	
8	437	77.33	267.9	
9	453	101.31	339.2	
10	461	109.75	360.8	
11	487	203.30	631.9	
12	502	171.72	517.9	
13	519	224.67	655.3	
14	532	175.81	500.9	
15	552	329.48	904.9	
16	1,573	24,973.88	24,049.8	
17	1,651	2,580.73	2,367.8	
18	1,723	5,931.14	5,215.8	
19	1,925	3,207.62	2,525.3	
20	2,173	4,385.46	3,057.6	
21	2,548	12,434.02	7,394.1	
22	7,017	439.33	94.9	
23	8,859	110.78	18.9	
24	9,339	119.13	19.3	
25	10,380	75.00	10.9	Upper Marker
26	10,820	0.00	0.0	


Assay Class: High Sensitivity DNA Assay
Data Path: C:\...ents and Settings\Bioanalyzer\2012-04-03\2012-04-03_004.xad

Created: 4/3/2012 4:26:24 PM
Modified: 4/3/2012 5:01:31 PM

Electropherogram Summary Continued ...**... Peak table for sample 8 : M8**

Peak	Size [bp]	Conc. [pg/ μ l]	Molarity [pmol/l]	Observations
27	11,501	0.00	0.0	
28	12,222	0.00	0.0	
29	12,942	0.00	0.0	
30	13,463	0.00	0.0	
31	14,103	0.00	0.0	
32	14,904	0.00	0.0	
33	16,346	0.00	0.0	
34	17,467	0.00	0.0	

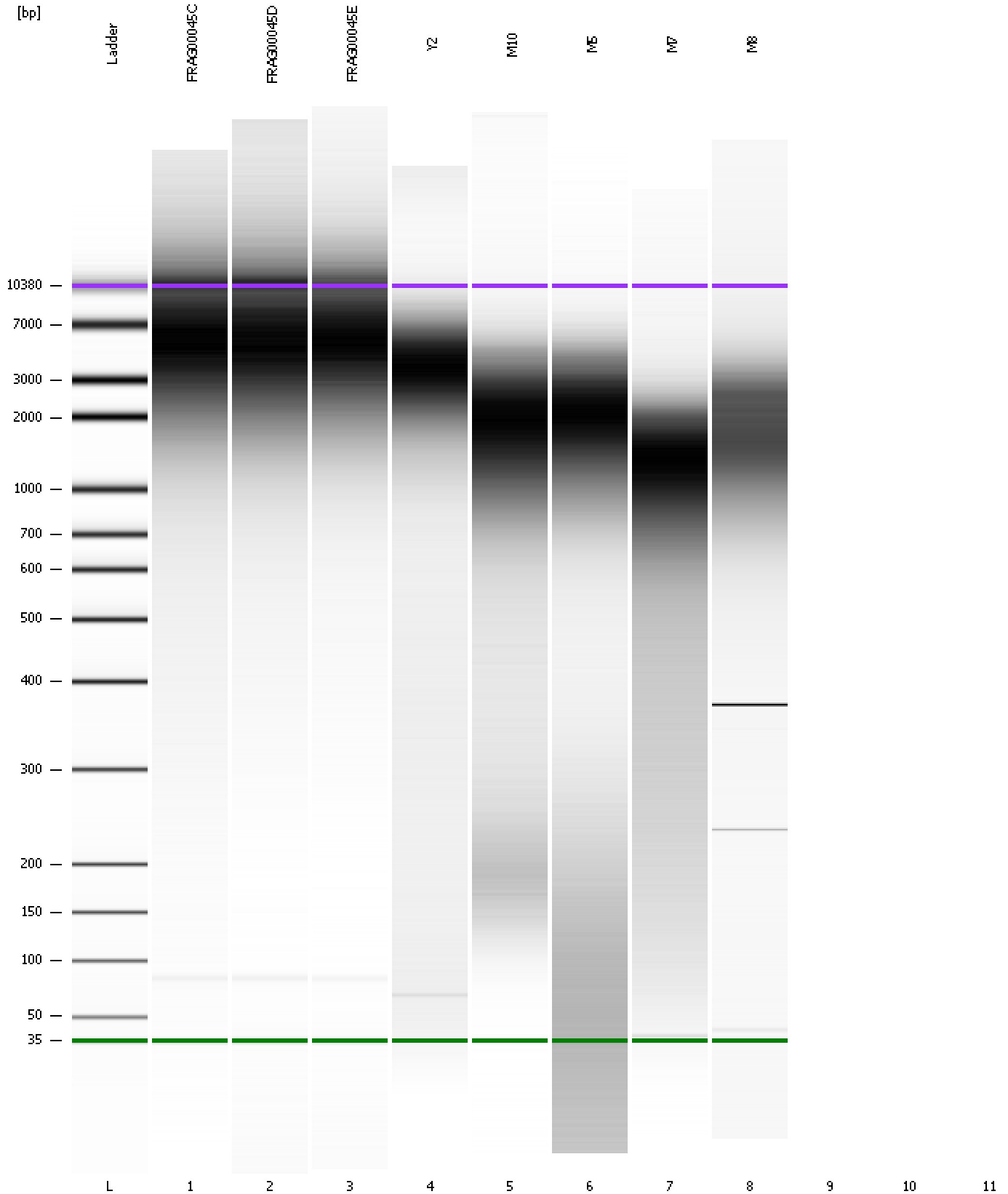
Region table for sample 8 : M8

From [bp]	Molarity [pmol/l]	Average Size [bp]	Conc. [pg/ μ l]	To [bp]	Corr. Area	% of Total	Size distribution in CV [%]	Color
200	47,955.9	713	18,557.14	1,000	2,703.1	25	28.9	

Assay Class: High Sensitivity DNA Assay
Data Path: C:\...ents and Settings\Bioanalyzer\2012-04-03\2012-04-03_004.xad

Created: 4/3/2012 4:26:24 PM
Modified: 4/3/2012 5:01:31 PM

Gel Image



Assay Class: High Sensitivity DNA Assay
Data Path: C:\...ents and Settings\Bioanalyzer\2012-04-03\2012-04-03_004.xad

Created: 4/3/2012 4:26:24 PM
Modified: 4/3/2012 5:01:31 PM

Invalid Samples

Sample 9 has not been run, no results available.

Sample 10 has not been run, no results available.

Sample 11 has not been run, no results available.

Assay Class: High Sensitivity DNA Assay
 Data Path: C:\...ents and Settings\Bioanalyzer\2012-04-03\2012-04-03_004.xad

Created: 4/3/2012 4:26:24 PM
 Modified: 4/3/2012 5:01:31 PM

Run Logbook

Description	Number	Source	Category	Sub Category	Time	Time Zone	User	Host
Run ended on port 1 (Number of wells acquired: 9)		Instrument	Run		4/3/2012 4:59:10 PM	(GMT --07:00) Pacific Standard Time	UC Davis	D8XSMGH1
Run started on port 1 (File: C:\Documents and Settings\Bioanalyzer\2012-04-03\2012-04-03_004.xad)		Instrument	Run		4/3/2012 4:26:29 PM	(GMT --07:00) Pacific Standard Time	UC Davis	D8XSMGH1
Product Number : G2938B		Instrument	Run		4/3/2012 4:26:29 PM	(GMT --07:00) Pacific Standard Time	UC Davis	D8XSMGH1
Name :		Instrument	Run		4/3/2012 4:26:29 PM	(GMT --07:00) Pacific Standard Time	UC Davis	D8XSMGH1
Vendor : Agilent Technologies		Instrument	Run		4/3/2012 4:26:29 PM	(GMT --07:00) Pacific Standard Time	UC Davis	D8XSMGH1
Serial# : DE13701086		Instrument	Run		4/3/2012 4:26:29 PM	(GMT --07:00) Pacific Standard Time	UC Davis	D8XSMGH1
Firmware : C.01.069		Instrument	Run		4/3/2012 4:26:29 PM	(GMT --07:00) Pacific Standard Time	UC Davis	D8XSMGH1
Cartridge : Electrode		Instrument	Run		4/3/2012 4:26:29 PM	(GMT --07:00) Pacific Standard Time	UC Davis	D8XSMGH1