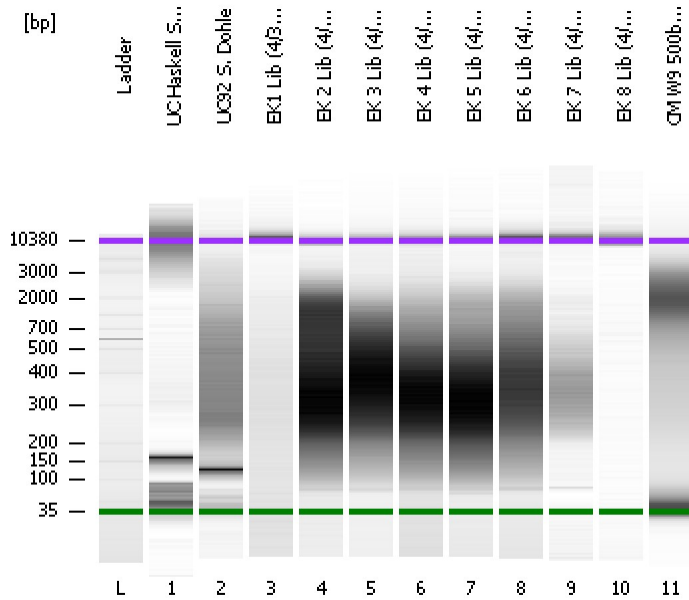


Assay Class: High Sensitivity DNA Assay
Data Path: C:\...ents and Settings\Bioanalyzer\2012-04-04\2012-04-04_001.xad

Created: 4/4/2012 9:07:16 AM
Modified: 4/4/2012 9:58:02 AM

Electrophoresis File Run Summary



Instrument Information:

Instrument Name: DE13701086 Firmware: C.01.069
Serial#: DE13701086 Type: G2938B

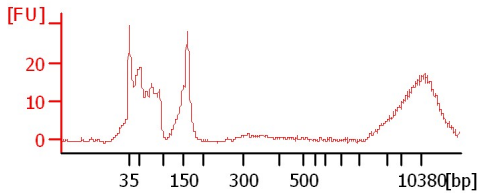
Assay Information:

Assay Origin Path: C:\Program Files\Agilent\2100 bioanalyzer\2100 expert\assays\dsDNA\High Sensitivity DNA.xsy
Assay Class: High Sensitivity DNA Assay
Version: 1.03
Assay Comments: Copyright © 2003-2010 Agilent Technologies

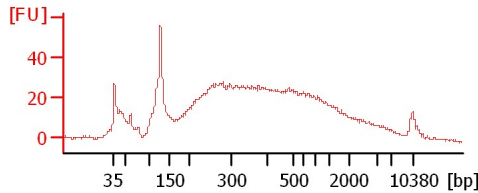
Chip Information:

Chip Lot #:
Reagent Kit Lot #:
Chip Comments:

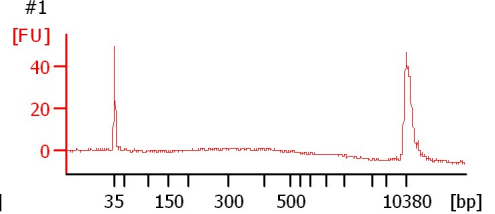
UC Haskell S. Hohle



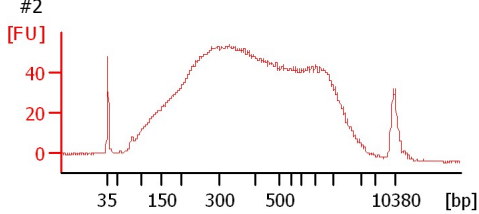
UC92 S. Dohle



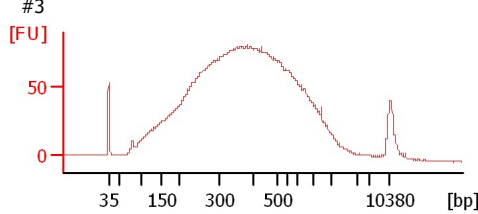
EK1 Lib (4/3/12)



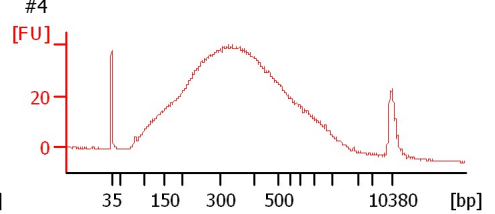
EK 2 Lib (4/3/12)



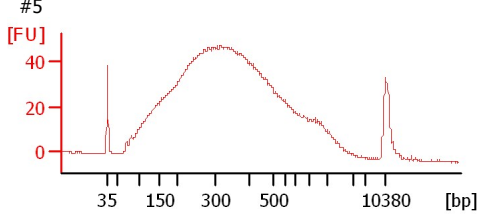
EK 3 Lib (4/3/12)



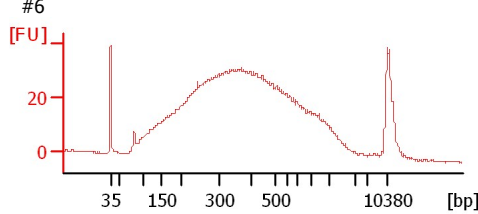
EK 4 Lib (4/3/12)



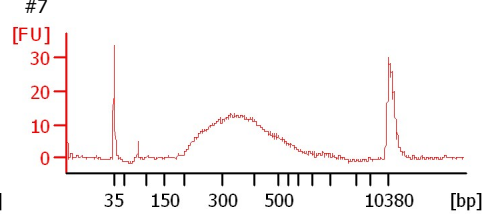
EK 5 Lib (4/3/12)



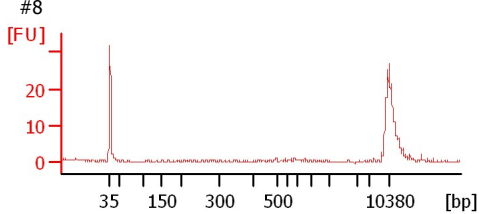
EK 6 Lib (4/3/12)



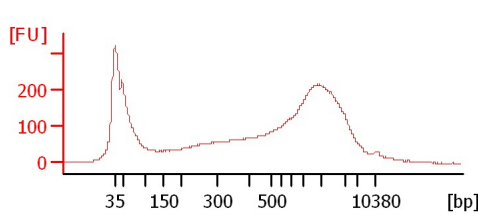
EK 7 Lib (4/3/12)



EK 8 Lib (4/3/12)



CM W9 500bp Soni



Assay Class: High Sensitivity DNA Assay
 Data Path: C:\...ents and Settings\Bioanalyzer\2012-04-04\2012-04-04_001.xad

Created: 4/4/2012 9:07:16 AM
 Modified: 4/4/2012 9:58:02 AM

Electrophoresis File Run Summary (Chip Summary)

Sample Name	Sample Comment	Rest. Digest	Status	Observation	Result Label	Result Color
UC Haskell S. Hohle		<input type="checkbox"/>	✓			
UC92 S. Dohle		<input type="checkbox"/>	✓			
EK1 Lib (4/3/12)	#1	<input type="checkbox"/>	✓			
EK 2 Lib (4/3/12)	#2	<input type="checkbox"/>	✓			
EK 3 Lib (4/3/12)	#3	<input type="checkbox"/>	✓			
EK 4 Lib (4/3/12)	#4	<input type="checkbox"/>	✓			
EK 5 Lib (4/3/12)	#5	<input type="checkbox"/>	✓			
EK 6 Lib (4/3/12)	#6	<input type="checkbox"/>	✓			
EK 7 Lib (4/3/12)	#7	<input type="checkbox"/>	✓			
EK 8 Lib (4/3/12)	#8	<input type="checkbox"/>	✓			
CM W9 500bp Soni		<input type="checkbox"/>	✓			
Ladder		<input type="checkbox"/>	✓			

Chip Lot #

Reagent Kit Lot #

Chip Comments :

Assay Class: High Sensitivity DNA Assay
 Data Path: C:\...ents and Settings\Bioanalyzer\2012-04-04\2012-04-04_001.xad

Created: 4/4/2012 9:07:16 AM
 Modified: 4/4/2012 9:58:02 AM

Electrophoresis Assay Details

General Analysis Settings

Number of Available Sample and Ladder Wells (Max.) : 12
 Minimum Visible Range [s] : 32
 Maximum Visible Range [s] : 138
 Start Analysis Time Range [s] : 33
 End Analysis Time Range [s] : 137.5
 Ladder Concentration [pg/μl] : 1950
 Uses Standard Area for Ladder Fragments
 Lower Marker Concentration [pg/μl] : 125
 Upper Marker Concentration [pg/μl] : 75
 Used Upper Marker for Quantitation
 Standard Curve Fit is Point to Point
 Show Data Aligned to Lower and Upper Marker

Integrator Settings

Integration Start Time [s] : 33.05
 Integration End Time [s] : 137
 Slope Threshold : 0.8
 Height Threshold [FU] : 5
 Area Threshold : 0.1
 Width Threshold [s] : 0.6
 Baseline Plateau [s] : 0.5

Filter Settings

Filter Width [s] : 0.5
 Polynomial Order : 4

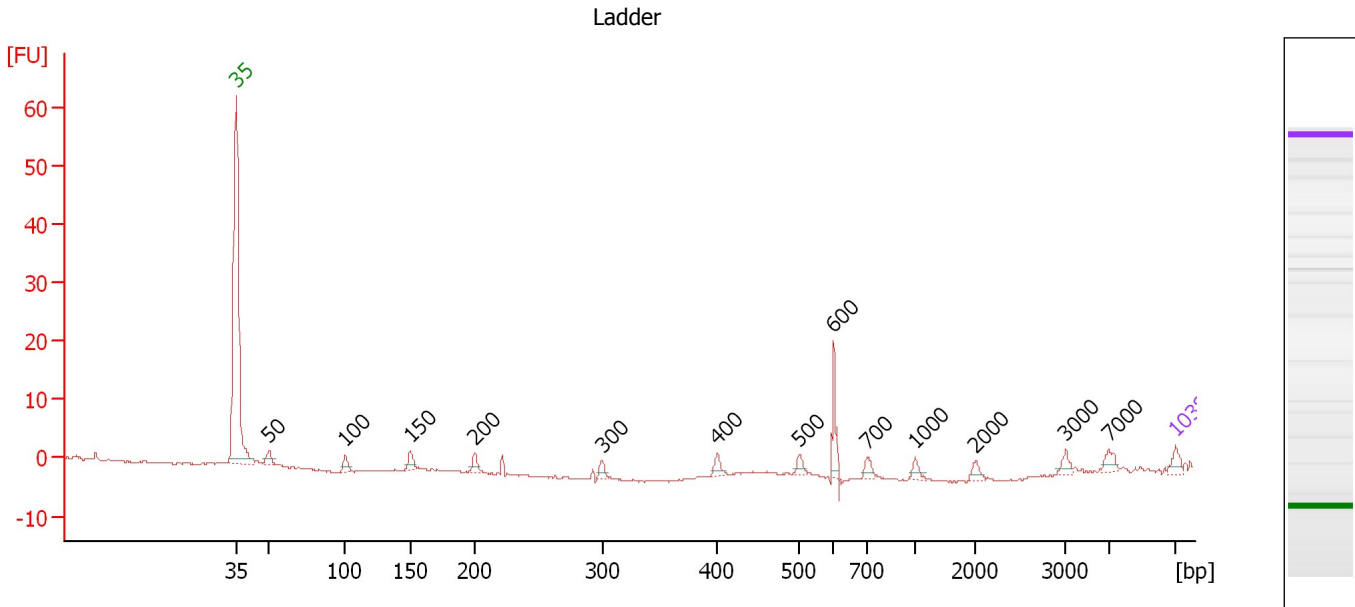
Ladder

Ladder Peak	Size	Area
1	35	160
2	50	210
3	100	208
4	150	221
5	200	242
6	300	270
7	400	305
8	500	306
9	600	336
10	700	321
11	1000	366
12	2000	413
13	3000	411
14	7000	400
15	10380	214

Assay Class: High Sensitivity DNA Assay
 Data Path: C:\...ents and Settings\Bioanalyzer\2012-04-04\2012-04-04_001.xad

Created: 4/4/2012 9:07:16 AM
 Modified: 4/4/2012 9:58:02 AM

Electropherogram Summary



Overall Results for Ladder

Noise: 0.1

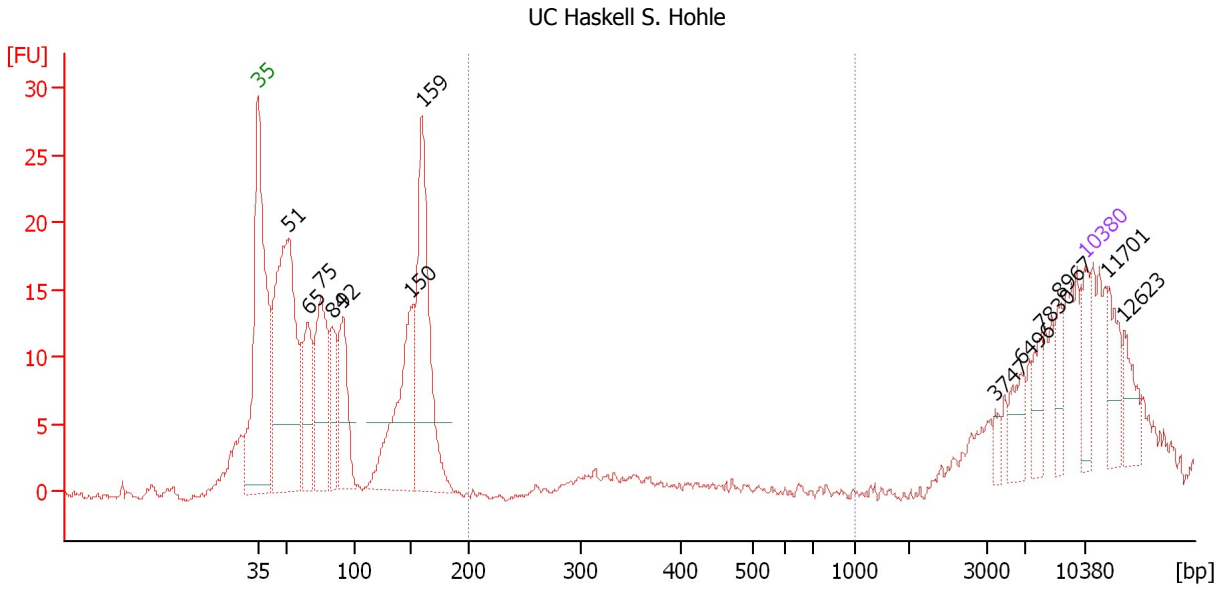
Peak table for Ladder

Peak	Size [bp]	Conc. [pg/μl]	Molarity [pmol/l]	Observations
1	35	125.00	5,411.3	Lower Marker
2	50	150.00	4,545.5	Ladder Peak
3	100	150.00	2,272.7	Ladder Peak
4	150	150.00	1,515.2	Ladder Peak
5	200	150.00	1,136.4	Ladder Peak
6	300	150.00	757.6	Ladder Peak
7	400	150.00	568.2	Ladder Peak
8	500	150.00	454.5	Ladder Peak
9	600	150.00	378.8	Ladder Peak
10	700	150.00	324.7	Ladder Peak
11	1,000	150.00	227.3	Ladder Peak
12	2,000	150.00	113.6	Ladder Peak
13	3,000	150.00	75.8	Ladder Peak
14	7,000	150.00	32.5	Ladder Peak
15	10,380	75.00	10.9	Upper Marker

Assay Class: High Sensitivity DNA Assay
 Data Path: C:\...ents and Settings\Bioanalyzer\2012-04-04\2012-04-04_001.xad

Created: 4/4/2012 9:07:16 AM
 Modified: 4/4/2012 9:58:02 AM

Electropherogram Summary Continued ...



Overall Results for sample 1 : UC Haskell S. Hohle

Number of peaks found: 13 Corr. Area 1: 5.8
 Noise: 0.3

Peak table for sample 1 : UC Haskell S. Hohle

Peak	Size [bp]	Conc. [pg/μl]	Molarity [pmol/l]	Observations
1	35	125.00	5,411.3	Lower Marker
2	51	1,164.32	34,886.4	
3	65	304.63	7,072.0	
4	75	462.31	9,364.6	
5	84	216.68	3,911.3	
6	92	323.23	5,330.2	
7	150	543.49	5,503.8	
8	159	778.02	7,410.2	
9	3,747	24.33	9.8	
10	6,496	75.67	17.6	
11	7,830	63.40	12.3	
12	8,967	58.65	9.9	
13	10,380	75.00	10.9	Upper Marker
14	11,701	0.00	0.0	
15	12,623	0.00	0.0	

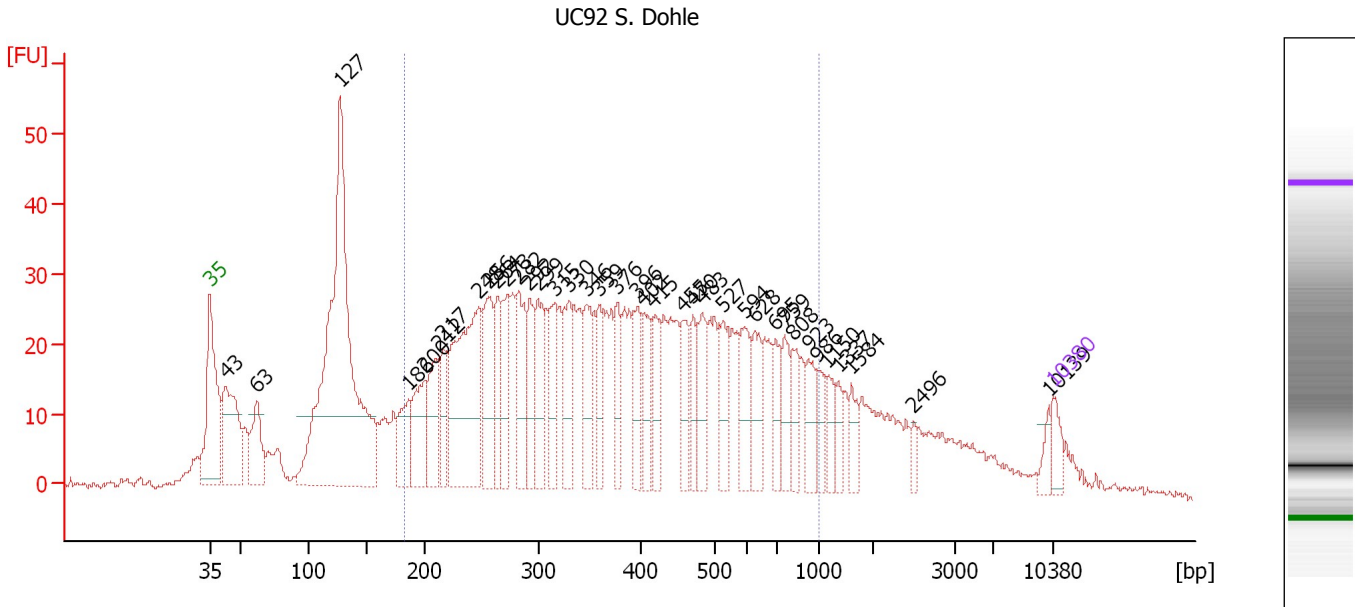
Region table for sample 1 : UC Haskell S. Hohle

From [bp]	Molarity [pmol/l]	Average Size [bp]	Conc. [pg/μl]	To [bp]	Corr. Area	% of Total	Size distribution in CV [%]	Color
200	297.5	334	64.84	1,000	5.8	1	10.3	Blue

Assay Class: High Sensitivity DNA Assay
 Data Path: C:\...ents and Settings\Bioanalyzer\2012-04-04\2012-04-04_001.xad

Created: 4/4/2012 9:07:16 AM
 Modified: 4/4/2012 9:58:02 AM

Electropherogram Summary Continued ...



Setpoint Deviations for sample 2 : UC92 S. Dohle

Height Threshold [FU] : 10

Overall Results for sample 2 : UC92 S. Dohle

Number of peaks found: 38 Corr. Area 1: 1,108.0
 Noise: 0.5

Peak table for sample 2 : UC92 S. Dohle

Peak	Size [bp]	Conc. [pg/μl]	Molarity [pmol/l]	Observations
1	35	125.00	5,411.3	Lower Marker
2	43	662.86	23,310.9	
3	63	341.38	8,263.5	
4	127	2,929.95	34,854.0	
5	186	271.48	2,206.8	
6	200	343.13	2,595.3	
7	212	318.98	2,280.5	
8	217	209.37	1,464.8	
9	248	1,015.21	6,210.9	
10	256	419.69	2,483.8	
11	264	257.04	1,475.7	
12	273	314.08	1,744.9	
13	282	377.07	2,025.9	
14	292	271.38	1,409.4	
15	299	318.29	1,612.0	
16	315	271.34	1,304.6	
17	330	294.44	1,353.3	
18	346	295.42	1,292.8	
19	359	210.69	890.1	
20	376	187.34	754.4	
21	396	233.28	892.7	
22	402	210.88	794.2	

Assay Class: High Sensitivity DNA Assay
 Data Path: C:\...ents and Settings\Bioanalyzer\2012-04-04\2012-04-04_001.xad


Created: 4/4/2012 9:07:16 AM
 Modified: 4/4/2012 9:58:02 AM

Electropherogram Summary Continued ...

... Peak table for sample 2 : UC92 S. Dohle

Peak	Size [bp]	Conc. [pg/μl]	Molarity [pmol/l]	Observations
23	415	205.82	750.7	
24	455	207.55	690.4	
25	470	157.59	508.0	
26	483	244.02	765.3	
27	527	245.15	705.2	
28	594	218.94	558.3	
29	628	192.45	464.6	
30	695	148.23	323.3	
31	759	152.00	303.2	
32	808	132.47	248.5	
33	923	141.41	232.2	
34	986	102.08	156.9	
35	1,150	87.15	114.8	
36	1,337	74.22	84.1	
37	1,584	91.79	87.8	
38	2,496	37.99	23.1	
39	10,139	48.50	7.2	
40	10,380	75.00	10.9	Upper Marker

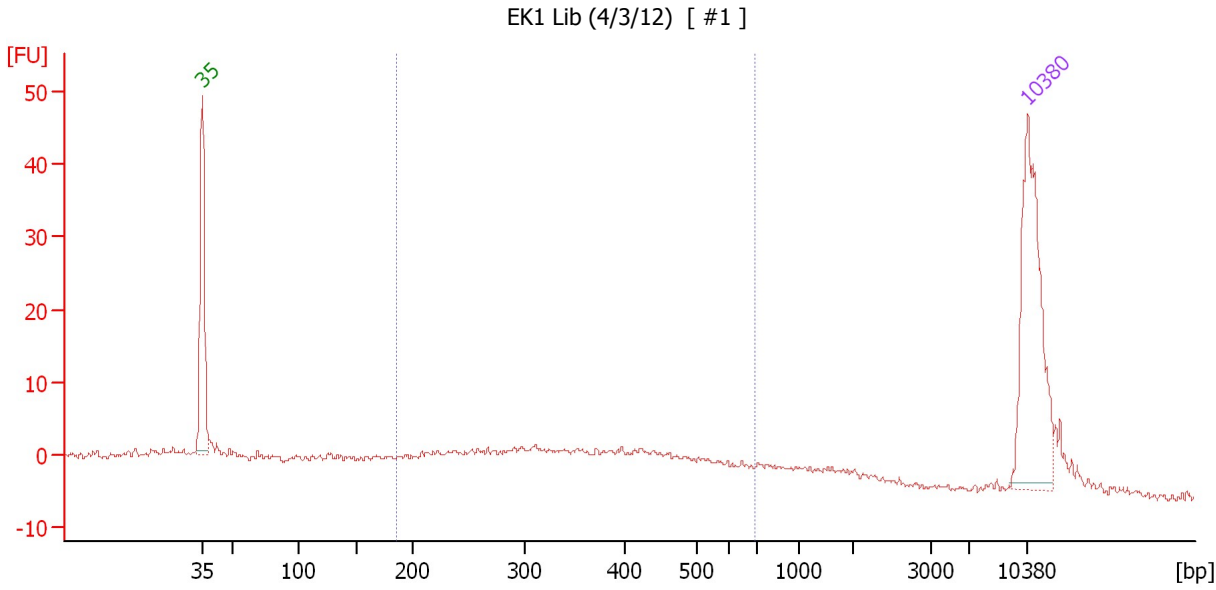
Region table for sample 2 : UC92 S. Dohle

From [bp]	Molarity [pmol/l]	Average Size [bp]	Conc. [pg/μl]	To [bp]	Corr. Area	% of Total	Size distribution in CV [%]	Color
183	49,655.0	416	10,875.87	1,000	1,108.0	65	43.4	

Assay Class: High Sensitivity DNA Assay
 Data Path: C:\...ents and Settings\Bioanalyzer\2012-04-04\2012-04-04_001.xad

Created: 4/4/2012 9:07:16 AM
 Modified: 4/4/2012 9:58:02 AM

Electropherogram Summary Continued ...



Setpoint Deviations for sample 3 : EK1 Lib (4/3/12)

Height Threshold [FU] : 20

Overall Results for sample 3 : EK1 Lib (4/3/12)

Number of peaks found: 0 Corr. Area 1: 97.3
 Noise: 0.4

Peak table for sample 3 : EK1 Lib (4/3/12)

Peak	Size [bp]	Conc. [pg/μl]	Molarity [pmol/l]	Observations
1	35	125.00	5,411.3	Lower Marker
2	10,380	75.00	10.9	Upper Marker

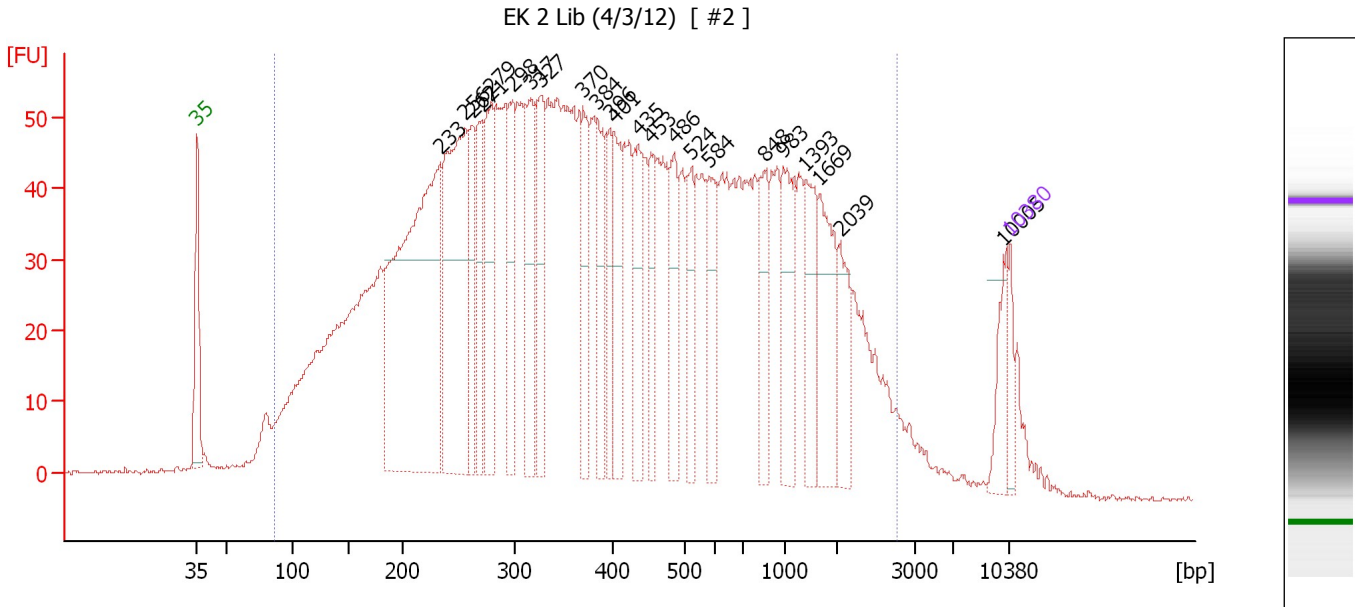
Region table for sample 3 : EK1 Lib (4/3/12)

From [bp]	Molarity [pmol/l]	Average Size [bp]	Conc. [pg/μl]	To [bp]	Corr. Area	% of Total	Size distribution in CV [%]	Color
186	602.6	369	128.11	691	97.3	60	30.7	Blue

Assay Class: High Sensitivity DNA Assay
 Data Path: C:\...ents and Settings\Bioanalyzer\2012-04-04\2012-04-04_001.xad

Created: 4/4/2012 9:07:16 AM
 Modified: 4/4/2012 9:58:02 AM

Electropherogram Summary Continued ...



Setpoint Deviations for sample 4 : EK 2 Lib (4/3/12)

Height Threshold [FU] : 30

Overall Results for sample 4 : EK 2 Lib (4/3/12)

Number of peaks found: 23 Corr. Area 1: 2,835.1
 Noise: 0.3

Peak table for sample 4 : EK 2 Lib (4/3/12)


Peak	Size [bp]	Conc. [pg/μl]	Molarity [pmol/l]	Observations
1	35	125.00	5,411.3	Lower Marker
2	233	1,760.68	11,434.7	
3	256	977.30	5,785.9	
4	262	296.12	1,711.3	
5	271	293.11	1,636.8	
6	279	383.52	2,082.5	
7	298	310.83	1,578.8	
8	317	338.32	1,617.5	
9	327	352.32	1,634.5	
10	370	254.23	1,042.3	
11	384	270.00	1,066.6	
12	396	198.39	758.2	
13	401	266.42	1,006.5	
14	435	252.33	878.8	
15	453	189.97	635.2	
16	486	220.48	687.9	
17	524	204.74	591.5	
18	584	209.09	542.5	
19	848	205.43	367.2	
20	983	267.53	412.6	
21	1,393	213.67	232.4	
22	1,669	269.33	244.4	

Assay Class: High Sensitivity DNA Assay
 Data Path: C:\...ents and Settings\Bioanalyzer\2012-04-04\2012-04-04_001.xad


Created: 4/4/2012 9:07:16 AM
 Modified: 4/4/2012 9:58:02 AM

Electropherogram Summary Continued ...

... Peak table for sample 4 : EK 2 Lib (4/3/12)

Peak	Size [bp]	Conc. [pg/μl]	Molarity [pmol/l]	Observations
23	2,039	150.16	111.6	
24	10,005	98.32	14.9	
25	 10,380	75.00	10.9	Upper Marker

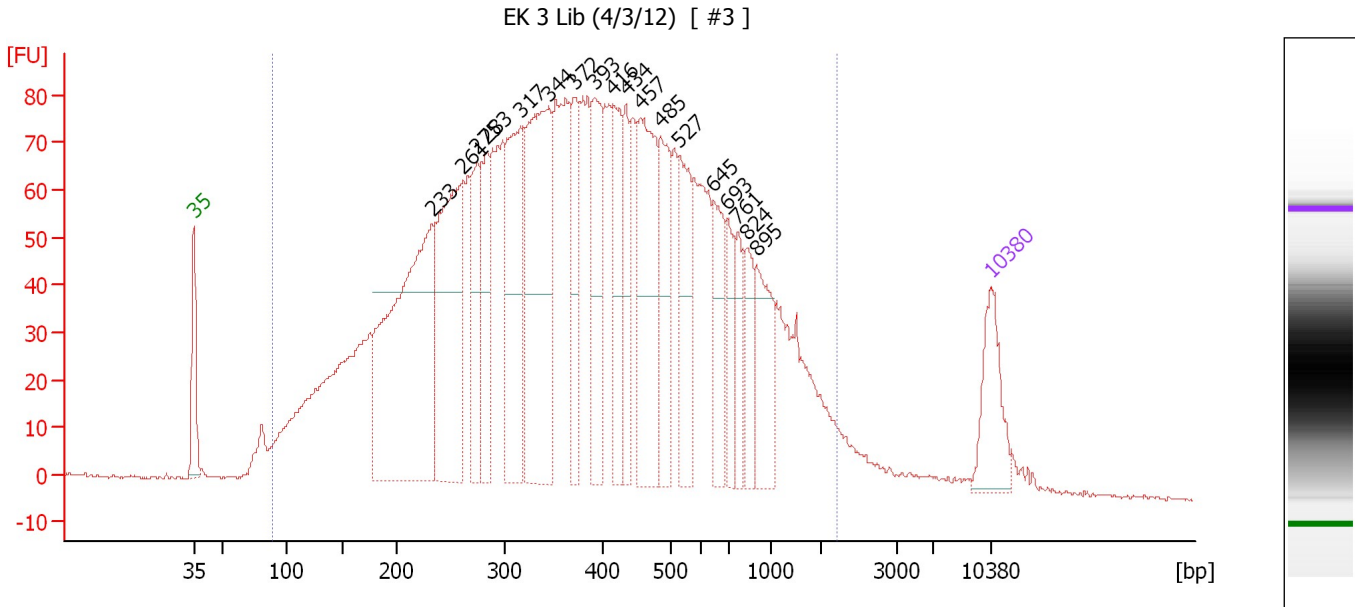
Region table for sample 4 : EK 2 Lib (4/3/12)

From [bp]	Molarity [pmol/l]	Average Size [bp]	Conc. [pg/μl]	To [bp]	Corr. Area	% of Total	Size distribution in CV [%]	Color
87	83,929.4	593	15,835.10	2,781	2,835.1	96	93.9	

Assay Class: High Sensitivity DNA Assay
 Data Path: C:\...ents and Settings\Bioanalyzer\2012-04-04\2012-04-04_001.xad

Created: 4/4/2012 9:07:16 AM
 Modified: 4/4/2012 9:58:02 AM

Electropherogram Summary Continued ...



Setpoint Deviations for sample 5 : EK 3 Lib (4/3/12)

Height Threshold [FU] : 40

Overall Results for sample 5 : EK 3 Lib (4/3/12)

Number of peaks found: 18 Corr. Area 1: 3,562.9
 Noise: 0.4

Peak table for sample 5 : EK 3 Lib (4/3/12)

Peak	Size [bp]	Conc. [pg/μl]	Molarity [pmol/l]	Observations
1	35	125.00	5,411.3	Lower Marker
2	233	652.94	4,240.7	
3	261	382.23	2,216.5	
4	275	142.16	783.2	
5	283	143.81	768.9	
6	317	262.09	1,254.5	
7	344	391.36	1,721.3	
8	372	122.18	497.8	
9	393	160.02	616.5	
10	416	145.59	530.3	
11	434	87.71	305.9	
12	457	261.01	865.7	
13	485	148.82	465.3	
14	527	138.35	398.0	
15	645	106.41	250.0	
16	693	68.09	148.8	
17	761	55.38	110.3	
18	824	60.32	110.9	
19	895	102.33	173.3	
20	10,380	75.00	10.9	Upper Marker

Assay Class: High Sensitivity DNA Assay
Data Path: C:\...ents and Settings\Bioanalyzer\2012-04-04\2012-04-04_001.xad

Created: 4/4/2012 9:07:16 AM
Modified: 4/4/2012 9:58:02 AM

Electropherogram Summary Continued ...

... Region table for sample 5 :

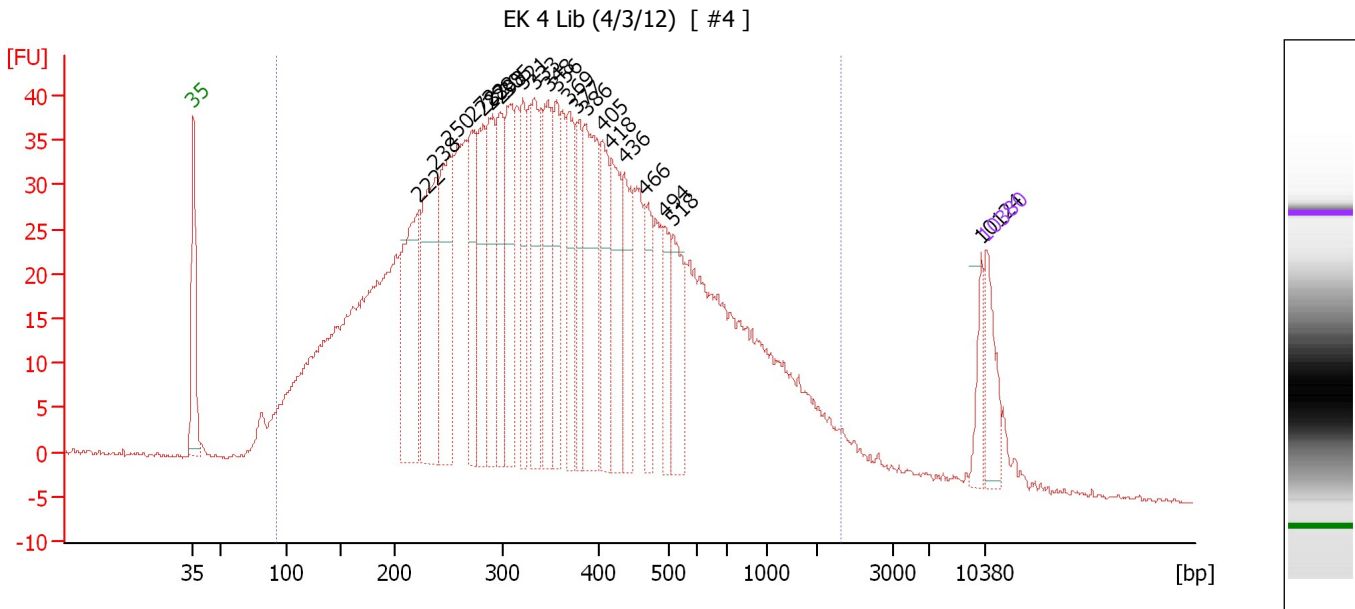
EK 3 Lib (4/3/12)

From [bp]	Molarity [pmol/l]	Average Size [bp]	Conc. [pg/μl]	To [bp]	Corr. Area	% of Total	Size distribution in CV [%]	Color
90	29,150.1	465	5,638.37	2,203	3,562.9	97	72.0	■

Assay Class: High Sensitivity DNA Assay
 Data Path: C:\...ents and Settings\Bioanalyzer\2012-04-04\2012-04-04_001.xad

Created: 4/4/2012 9:07:16 AM
 Modified: 4/4/2012 9:58:02 AM

Electropherogram Summary Continued ...



Setpoint Deviations for sample 6 : EK 4 Lib (4/3/12)

Height Threshold [FU] : 25

Overall Results for sample 6 : EK 4 Lib (4/3/12)

Number of peaks found: 22 Corr. Area 1: 1,761.2
 Noise: 0.3

Peak table for sample 6 : EK 4 Lib (4/3/12)

Peak	Size [bp]	Conc. [pg/μl]	Molarity [pmol/l]	Observations
1	35	125.00	5,411.3	Lower Marker
2	222	365.34	2,492.1	
3	238	368.73	2,348.1	
4	250	333.10	2,020.6	
5	272	198.96	1,110.3	
6	282	208.94	1,121.2	
7	288	223.83	1,176.4	
8	298	172.91	880.1	
9	305	222.45	1,104.6	
10	321	155.99	736.0	
11	333	198.91	905.9	
12	348	203.16	885.7	
13	356	143.47	610.9	
14	369	187.09	769.3	
15	377	130.35	523.4	
16	386	295.84	1,160.8	
17	405	158.88	595.1	
18	418	181.34	657.8	
19	436	161.64	561.3	
20	466	123.54	401.9	
21	494	99.25	304.2	
22	518	140.38	411.0	

Assay Class: High Sensitivity DNA Assay
Data Path: C:\...ents and Settings\Bioanalyzer\2012-04-04\2012-04-04_001.xad

Created: 4/4/2012 9:07:16 AM
Modified: 4/4/2012 9:58:02 AM

Electropherogram Summary Continued ...**... Peak table for sample 6 : EK 4 Lib (4/3/12)**

Peak	Size [bp]	Conc. [pg/μl]	Molarity [pmol/l]	Observations
23	10,124	43.98	6.6	
24	▶ 10,380	75.00	10.9	Upper Marker

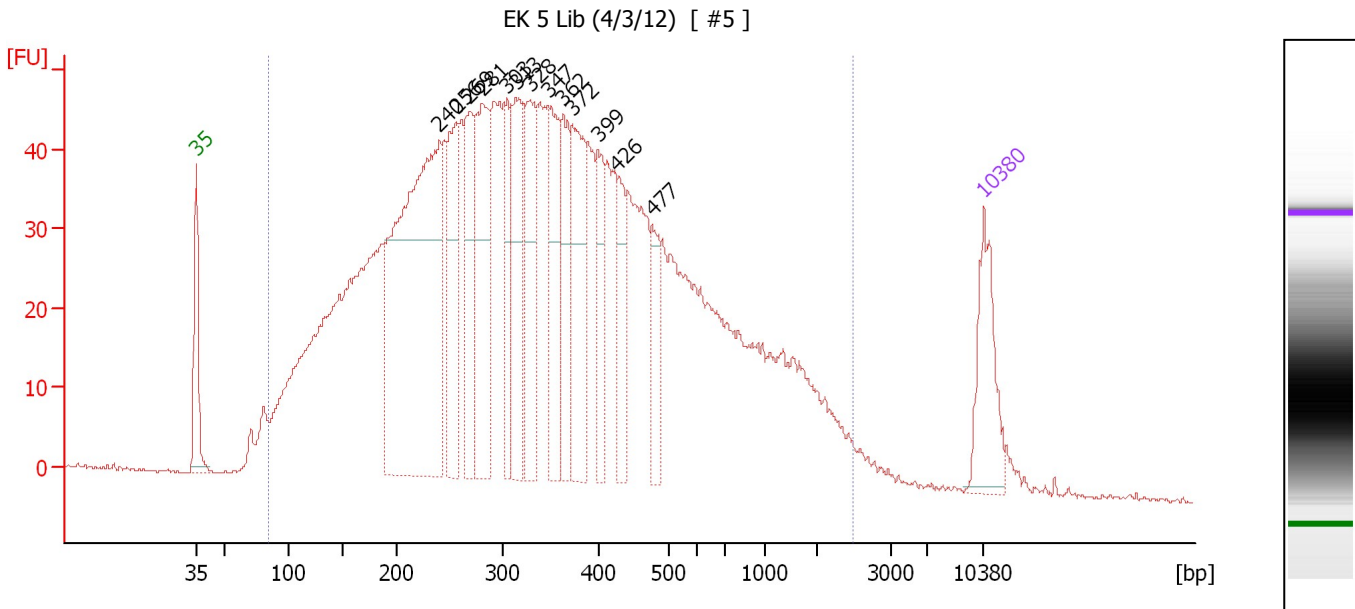
Region table for sample 6 : EK 4 Lib (4/3/12)

From [bp]	Molarity [pmol/l]	Average Size [bp]	Conc. [pg/μl]	To [bp]	Corr. Area	% of Total	Size distribution in CV [%]	Color
92	43,736.3	432	7,865.86	2,306	1,761.2	96	78.1	■

Assay Class: High Sensitivity DNA Assay
 Data Path: C:\...ents and Settings\Bioanalyzer\2012-04-04\2012-04-04_001.xad

Created: 4/4/2012 9:07:16 AM
 Modified: 4/4/2012 9:58:02 AM

Electropherogram Summary Continued ...



Setpoint Deviations for sample 7 : EK 5 Lib (4/3/12)

Height Threshold [FU] : 30

Overall Results for sample 7 : EK 5 Lib (4/3/12)

Number of peaks found: 13 Corr. Area 1: 2,160.3
 Noise: 0.2

Peak table for sample 7 : EK 5 Lib (4/3/12)

Peak	Size [bp]	Conc. [pg/µl]	Molarity [pmol/l]	Observations
1	35	125.00	5,411.3	Lower Marker
2	240	679.24	4,283.0	
3	256	161.52	957.1	
4	269	141.18	796.4	
5	281	205.31	1,107.0	
6	303	91.76	458.5	
7	313	159.35	770.9	
8	328	146.51	676.4	
9	347	136.40	595.6	
10	362	111.28	465.8	
11	372	160.77	654.9	
12	399	78.28	297.5	
13	426	78.71	279.9	
14	477	60.13	191.1	
15	10,380	75.00	10.9	Upper Marker

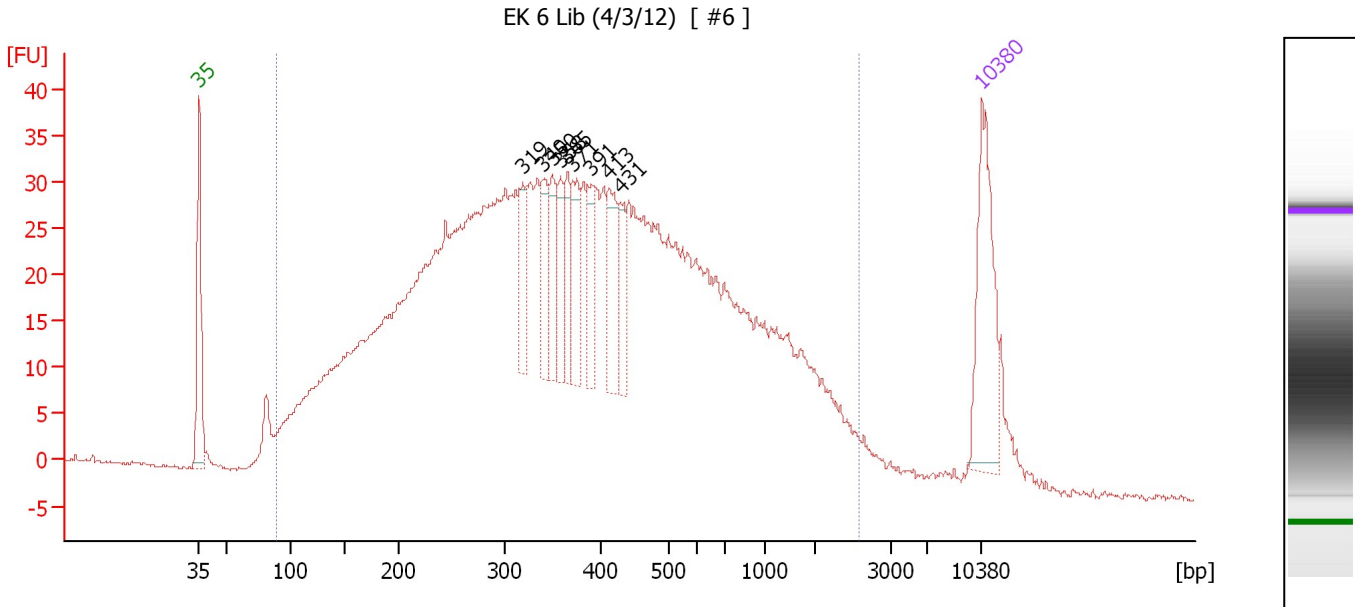
Region table for sample 7 : EK 5 Lib (4/3/12)

From [bp]	Molarity [pmol/l]	Average Size [bp]	Conc. [pg/µl]	To [bp]	Corr. Area	% of Total	Size distribution in CV [%]	Color
84	27,906.9	436	4,718.57	2,479	2,160.3	98	87.8	Blue

Assay Class: High Sensitivity DNA Assay
 Data Path: C:\...ents and Settings\Bioanalyzer\2012-04-04\2012-04-04_001.xad

Created: 4/4/2012 9:07:16 AM
 Modified: 4/4/2012 9:58:02 AM

Electropherogram Summary Continued ...



Setpoint Deviations for sample 8 : EK 6 Lib (4/3/12)

Height Threshold [FU] : 20

Overall Results for sample 8 : EK 6 Lib (4/3/12)

Number of peaks found: 9 Corr. Area 1: 1,474.0
 Noise: 0.2

Peak table for sample 8 : EK 6 Lib (4/3/12)

Peak	Size [bp]	Conc. [pg/μl]	Molarity [pmol/l]	Observations
1	35	125.00	5,411.3	Lower Marker
2	319	35.34	168.1	
3	340	38.21	170.4	
4	350	37.83	163.8	
5	358	34.43	145.6	
6	365	34.54	143.2	
7	371	44.03	179.8	
8	391	32.29	125.1	
9	413	47.32	173.4	
10	431	29.08	102.3	
11	10,380	75.00	10.9	Upper Marker

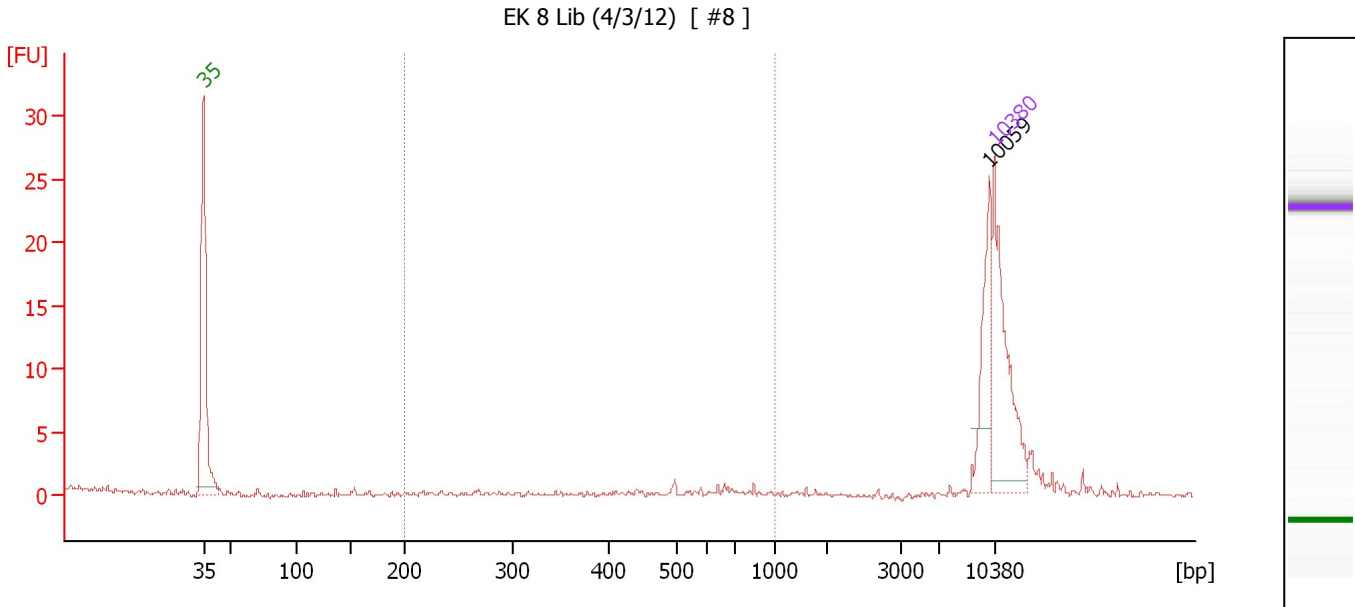
Region table for sample 8 : EK 6 Lib (4/3/12)

From [bp]	Molarity [pmol/l]	Average Size [bp]	Conc. [pg/μl]	To [bp]	Corr. Area	% of Total	Size distribution in CV [%]	Color
89	15,635.3	509	2,935.65	2,590	1,474.0	96	88.4	Blue

Assay Class: High Sensitivity DNA Assay
 Data Path: C:\...ents and Settings\Bioanalyzer\2012-04-04\2012-04-04_001.xad

Created: 4/4/2012 9:07:16 AM
 Modified: 4/4/2012 9:58:02 AM

Electropherogram Summary Continued ...



Overall Results for sample 10 : EK 8 Lib (4/3/12)

Number of peaks found: 1 Corr. Area 1: 0.7
 Noise: 0.2

Peak table for sample 10 : EK 8 Lib (4/3/12)

Peak	Size [bp]	Conc. [pg/μl]	Molarity [pmol/l]	Observations
1	35	125.00	5,411.3	Lower Marker
2	10,059	45.19	6.8	
3	10,380	75.00	10.9	Upper Marker

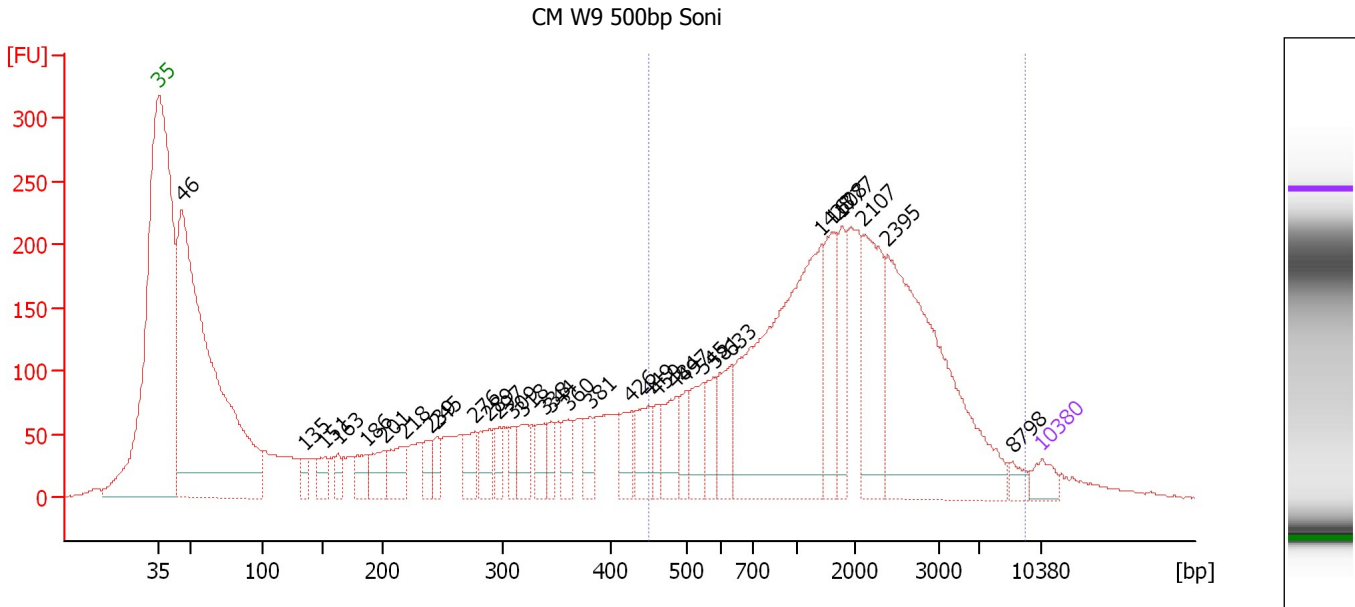
Region table for sample 10 : EK 8 Lib (4/3/12)

From [bp]	Molarity [pmol/l]	Average Size [bp]	Conc. [pg/μl]	To [bp]	Corr. Area	% of Total	Size distribution in CV [%]	Color
200	5.9	616	2.28	1,000	0.7	3	19.5	Blue

Assay Class: High Sensitivity DNA Assay
 Data Path: C:\...ents and Settings\Bioanalyzer\2012-04-04\2012-04-04_001.xad

Created: 4/4/2012 9:07:16 AM
 Modified: 4/4/2012 9:58:02 AM

Electropherogram Summary Continued ...



Setpoint Deviations for sample 11 : CM W9 500bp Soni

Height Threshold [FU] : 20

Overall Results for sample 11 : CM W9 500bp Soni

Number of peaks found: 32 Corr. Area 1: 3,786.8
 Noise: 0.5

Peak table for sample 11 : CM W9 500bp Soni


Peak	Size [bp]	Conc. [pg/μl]	Molarity [pmol/l]	Observations
1	35	125.00	5,411.3	Lower Marker
2	46	4,553.00	149,725.4	
3	135	98.77	1,105.9	
4	151	125.90	1,259.2	
5	163	96.15	895.9	
6	186	161.53	1,312.6	
7	201	191.55	1,445.6	
8	218	239.34	1,661.6	
9	239	130.34	824.8	
10	245	109.08	673.9	
11	276	186.62	1,024.5	
12	289	188.67	990.1	
13	297	112.97	577.0	
14	309	111.89	549.2	
15	318	172.67	823.9	
16	338	150.08	673.4	
17	344	117.65	517.9	
18	360	141.09	593.6	
19	381	148.30	590.0	
20	426	205.66	731.0	
21	449	229.45	774.8	
22	459	122.50	403.9	

Assay Class: High Sensitivity DNA Assay
 Data Path: C:\...ents and Settings\Bioanalyzer\2012-04-04\2012-04-04_001.xad


Created: 4/4/2012 9:07:16 AM
 Modified: 4/4/2012 9:58:02 AM

Electropherogram Summary Continued ...

... Peak table for sample 11 : CM W9 500bp Soni

Peak	Size [bp]	Conc. [pg/µl]	Molarity [pmol/l]	Observations
23	484	251.60	787.0	
24	497	124.36	379.2	
25	545	240.07	667.7	
26	581	174.88	455.7	
27	633	289.59	693.2	
28	1,428	1,696.59	1,800.4	
29	1,608	360.17	339.4	
30	1,777	228.20	194.6	
31	2,107	533.16	383.4	
32	2,395	1,506.37	953.1	
33	8,798	55.19	9.5	
34	 10,380	75.00	10.9	Upper Marker

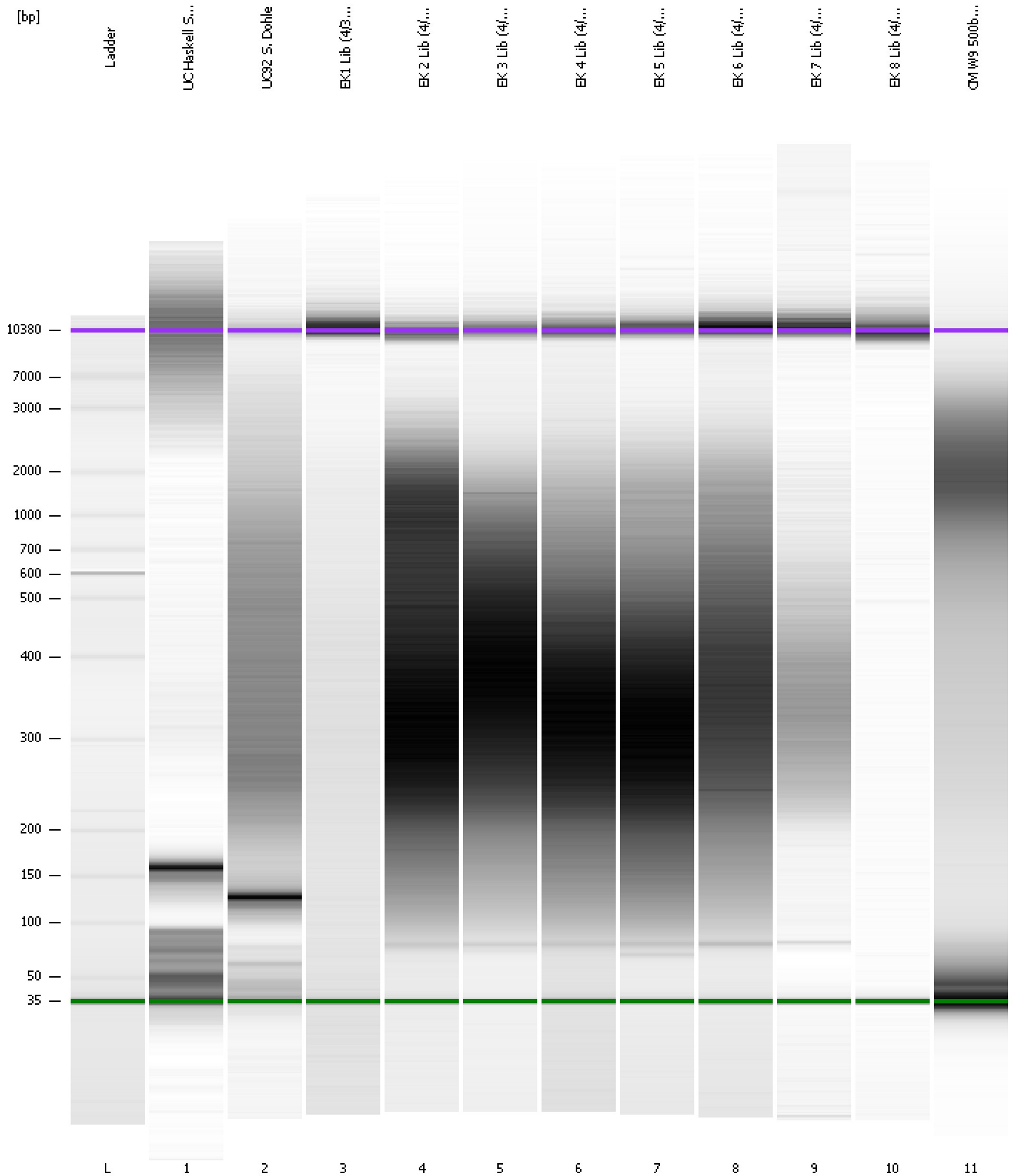
Region table for sample 11 : CM W9 500bp Soni

From [bp]	Molarity [pmol/l]	Average Size [bp]	Conc. [pg/µl]	To [bp]	Corr. Area	% of Total	Size distribution in CV [%]	Color
449	8,763.7	1,989	6,223.31	9,477	3,786.8	51	82.0	

Assay Class: High Sensitivity DNA Assay
Data Path: C:\...ents and Settings\Bioanalyzer\2012-04-04\2012-04-04_001.xad

Created: 4/4/2012 9:07:16 AM
Modified: 4/4/2012 9:58:02 AM

Gel Image



Assay Class: High Sensitivity DNA Assay Created: 4/4/2012 9:07:16 AM
 Data Path: C:\...ents and Settings\Bioanalyzer\2012-04-04\2012-04-04_001.xad Modified: 4/4/2012 9:58:02 AM

Run Logbook

Description	Number	Source	Category	Sub Category	Time	Time Zone	User	Host
Run ended on port 1 (Number of wells acquired: 12)		Instrument	Run		4/4/2012 9:48:35 AM	(GMT --07:00) Pacific Standard Time	UC Davis	D8XSMGH1
Run started on port 1 (File: C:\Documents and Settings\Bioanalyzer\2012-04-04\2012-04-04_001.xad)		Instrument	Run		4/4/2012 9:07:22 AM	(GMT --07:00) Pacific Standard Time	UC Davis	D8XSMGH1
Product Number : G2938B		Instrument	Run		4/4/2012 9:07:22 AM	(GMT --07:00) Pacific Standard Time	UC Davis	D8XSMGH1
Name :		Instrument	Run		4/4/2012 9:07:22 AM	(GMT --07:00) Pacific Standard Time	UC Davis	D8XSMGH1
Vendor : Agilent Technologies		Instrument	Run		4/4/2012 9:07:22 AM	(GMT --07:00) Pacific Standard Time	UC Davis	D8XSMGH1
Serial# : DE13701086		Instrument	Run		4/4/2012 9:07:21 AM	(GMT --07:00) Pacific Standard Time	UC Davis	D8XSMGH1
Firmware : C.01.069		Instrument	Run		4/4/2012 9:07:21 AM	(GMT --07:00) Pacific Standard Time	UC Davis	D8XSMGH1
Cartridge : Electrode		Instrument	Run		4/4/2012 9:07:21 AM	(GMT --07:00) Pacific Standard Time	UC Davis	D8XSMGH1