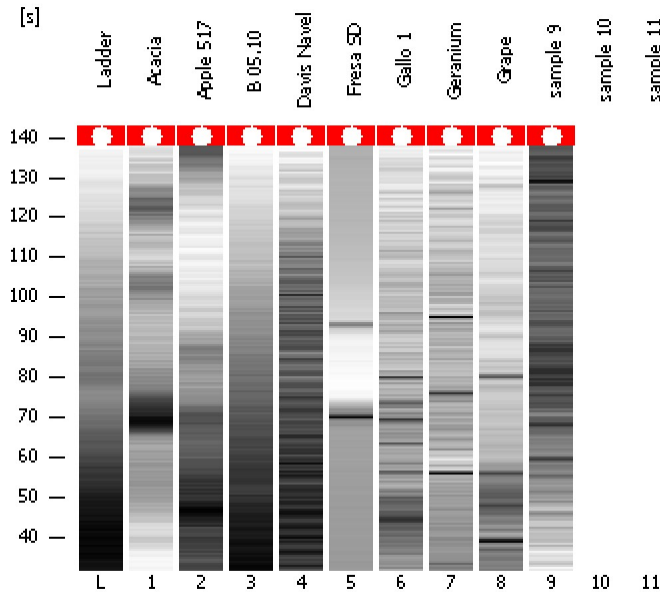


Assay Class: High Sensitivity DNA Assay  
Data Path: C:\...ents and Settings\Bioanalyzer\2012-04-04\2012-04-04\_002.xad

Created: 4/4/2012 10:21:42 AM  
Modified: 4/4/2012 10:57:30 AM

### Electrophoresis File Run Summary



#### Instrument Information:

Instrument Name: DE13701086      Firmware: C.01.069  
Serial#: DE13701086      Type: G2938B

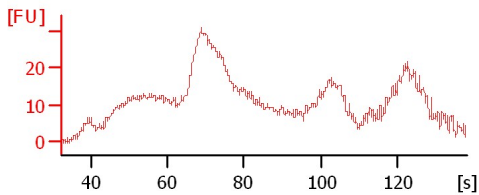
#### Assay Information:

Assay Origin Path: C:\Program Files\Agilent\2100 bioanalyzer\2100 expert\assays\dsDNA\High Sensitivity DNA.xsy  
Assay Class: High Sensitivity DNA Assay  
Version: 1.03  
Assay Comments: Copyright © 2003-2010 Agilent Technologies

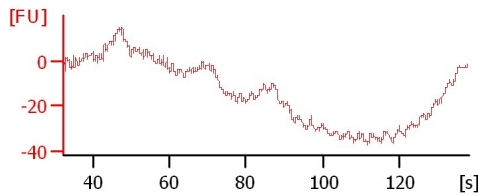
#### Chip Information:

Chip Lot #:      Reagent Kit Lot #:      Chip Comments:

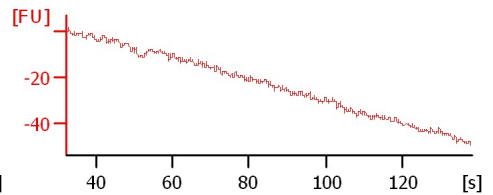
Acacia



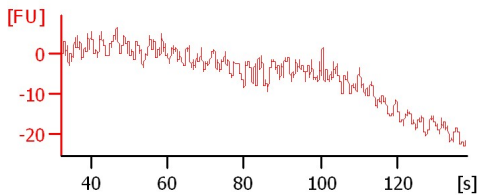
Apple 517



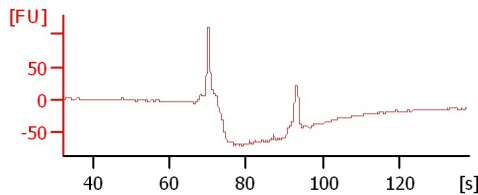
B 05.10



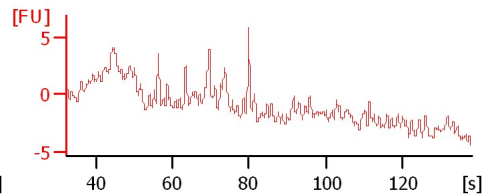
Davis Navel



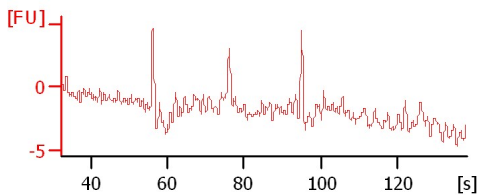
Fresa SD



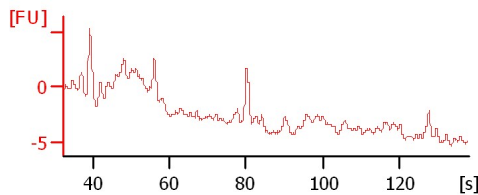
Gallo 1



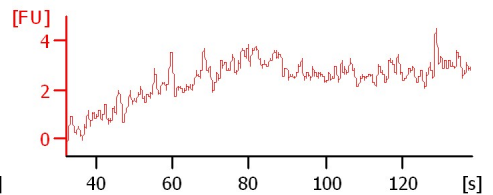
Geranium



Grape



sample 9



Assay Class: High Sensitivity DNA Assay  
 Data Path: C:\...ents and Settings\Bioanalyzer\2012-04-04\2012-04-04\_002.xad

Created: 4/4/2012 10:21:42 AM  
 Modified: 4/4/2012 10:57:30 AM

**Electrophoresis File Run Summary (Chip Summary)**

Sample Name	Sample Comment	Rest. Digest	Status	Observation	Result Label	Result Color
Acacia		<input type="checkbox"/>	✓			
Apple 517		<input type="checkbox"/>	✓			
B 05.10		<input type="checkbox"/>	✓			
Davis Navel		<input type="checkbox"/>	✓			
Fresa SD		<input type="checkbox"/>	✓			
Gallo 1		<input type="checkbox"/>	✓			
Geranium		<input type="checkbox"/>	✓			
Grape		<input type="checkbox"/>	✓			
sample 9		<input type="checkbox"/>	✓			
sample 10		<input type="checkbox"/>	✗			
sample 11		<input type="checkbox"/>	✗			
Ladder		<input type="checkbox"/>	✓			

**Chip Lot #**

**Reagent Kit Lot #**

**Chip Comments :**

Assay Class: High Sensitivity DNA Assay  
Data Path: C:\...ents and Settings\Bioanalyzer\2012-04-04\2012-04-04\_002.xad

Created: 4/4/2012 10:21:42 AM  
Modified: 4/4/2012 10:57:30 AM

**Electrophoresis Assay Details**

**General Analysis Settings**

Number of Available Sample and Ladder Wells (Max.) : 12  
Minimum Visible Range [s] : 32  
Maximum Visible Range [s] : 138  
Start Analysis Time Range [s] : 33  
End Analysis Time Range [s] : 137.5  
Ladder Concentration [pg/μl] : 1950  
Uses Standard Area for Ladder Fragments  
Lower Marker Concentration [pg/μl] : 125  
Upper Marker Concentration [pg/μl] : 75  
Used Upper Marker for Quantitation  
Standard Curve Fit is Point to Point  
Show Data Aligned to Lower and Upper Marker

**Integrator Settings**

Integration Start Time [s] : 33.05  
Integration End Time [s] : 137  
Slope Threshold : 0.8  
Height Threshold [FU] : 5  
Area Threshold : 0.1  
Width Threshold [s] : 0.6  
Baseline Plateau [s] : 0.5

**Filter Settings**

Filter Width [s] : 0.5  
Polynomial Order : 4

**Ladder**

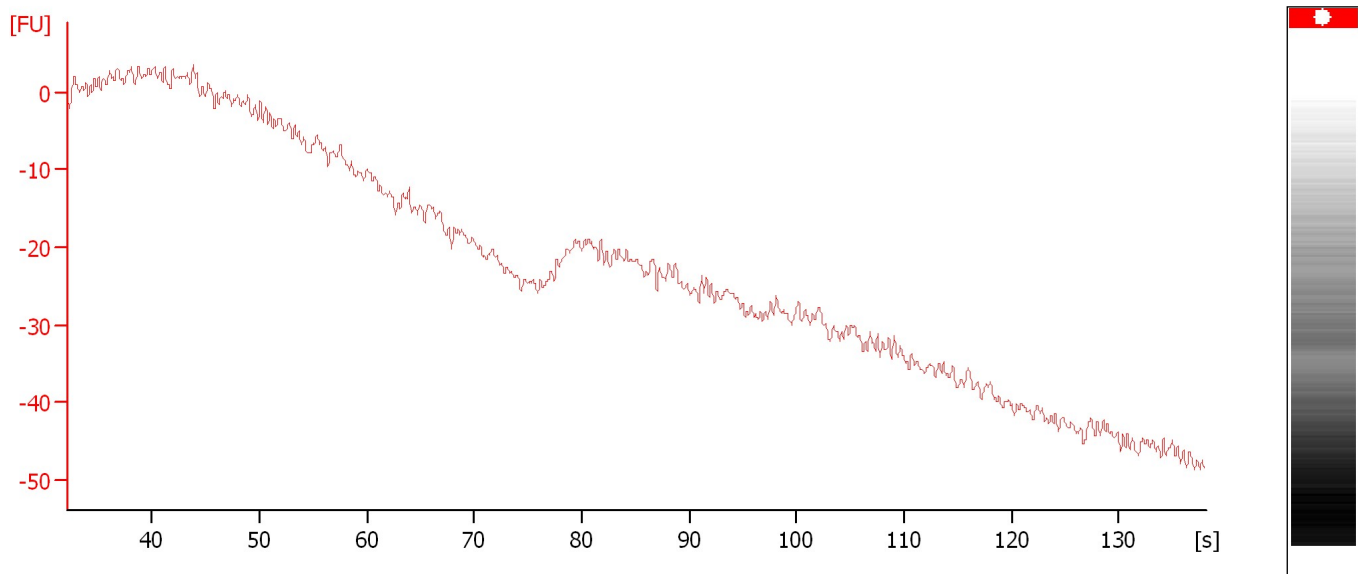
Ladder Peak	Size	Area
1	35	160
2	50	210
3	100	208
4	150	221
5	200	242
6	300	270
7	400	305
8	500	306
9	600	336
10	700	321
11	1000	366
12	2000	413
13	3000	411
14	7000	400
15	10380	214

Assay Class: High Sensitivity DNA Assay  
Data Path: C:\...ents and Settings\Bioanalyzer\2012-04-04\2012-04-04\_002.xad

Created: 4/4/2012 10:21:42 AM  
Modified: 4/4/2012 10:57:30 AM

### Electropherogram Summary

Ladder



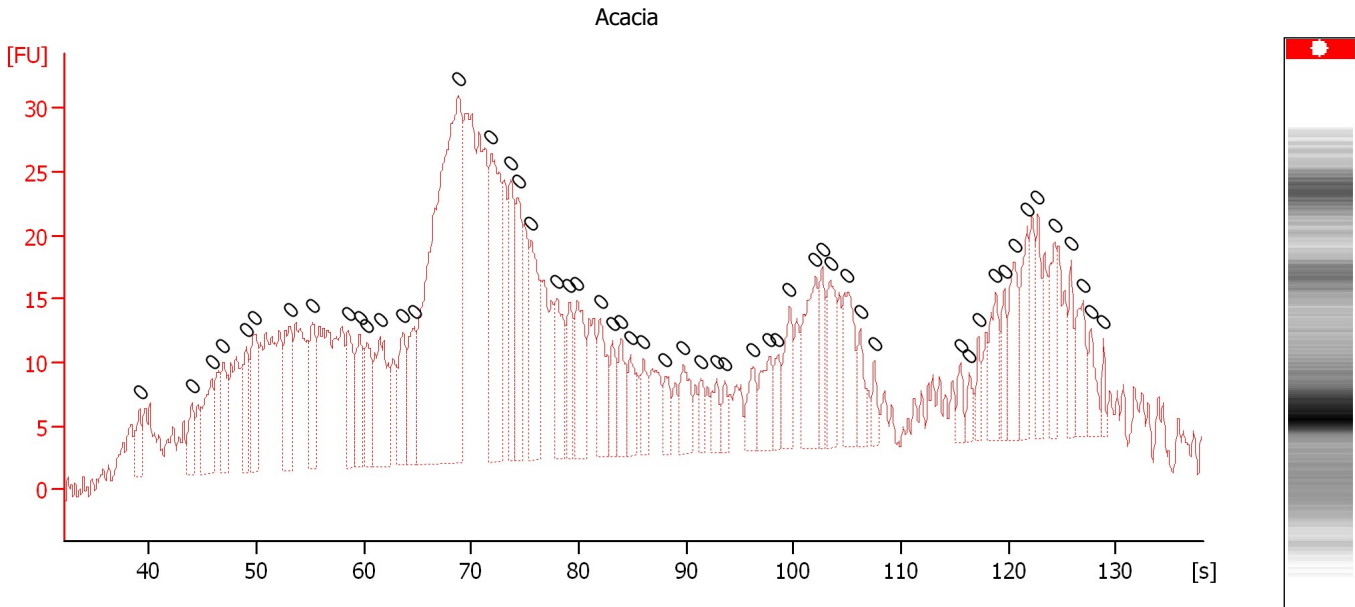
### Overall Results for Ladder

Noise: 1.2

Assay Class: High Sensitivity DNA Assay  
Data Path: C:\...ents and Settings\Bioanalyzer\2012-04-04\2012-04-04\_002.xad

Created: 4/4/2012 10:21:42 AM  
Modified: 4/4/2012 10:57:30 AM

**Electropherogram Summary Continued ...**



**Overall Results for sample 1 : Acacia**

Number of peaks found: 0                      Noise: 1.1

**Peak table for sample 1 : Acacia**

Peak	Size [bp]	Conc. [pg/μl]	Molarity [pmol/l]	Observations
1	0	0.00	0.0	
2	0	0.00	0.0	
3	0	0.00	0.0	
4	0	0.00	0.0	
5	0	0.00	0.0	
6	0	0.00	0.0	
7	0	0.00	0.0	
8	0	0.00	0.0	
9	0	0.00	0.0	
10	0	0.00	0.0	
11	0	0.00	0.0	
12	0	0.00	0.0	
13	0	0.00	0.0	
14	0	0.00	0.0	
15	0	0.00	0.0	
16	0	0.00	0.0	
17	0	0.00	0.0	
18	0	0.00	0.0	
19	0	0.00	0.0	
20	0	0.00	0.0	
21	0	0.00	0.0	
22	0	0.00	0.0	
23	0	0.00	0.0	
24	0	0.00	0.0	
25	0	0.00	0.0	
26	0	0.00	0.0	
27	0	0.00	0.0	

Assay Class: High Sensitivity DNA Assay  
Data Path: C:\...ents and Settings\Bioanalyzer\2012-04-04\2012-04-04\_002.xad

Created: 4/4/2012 10:21:42 AM  
Modified: 4/4/2012 10:57:30 AM

**Electropherogram Summary Continued ...****... Peak table for sample 1 : Acacia**

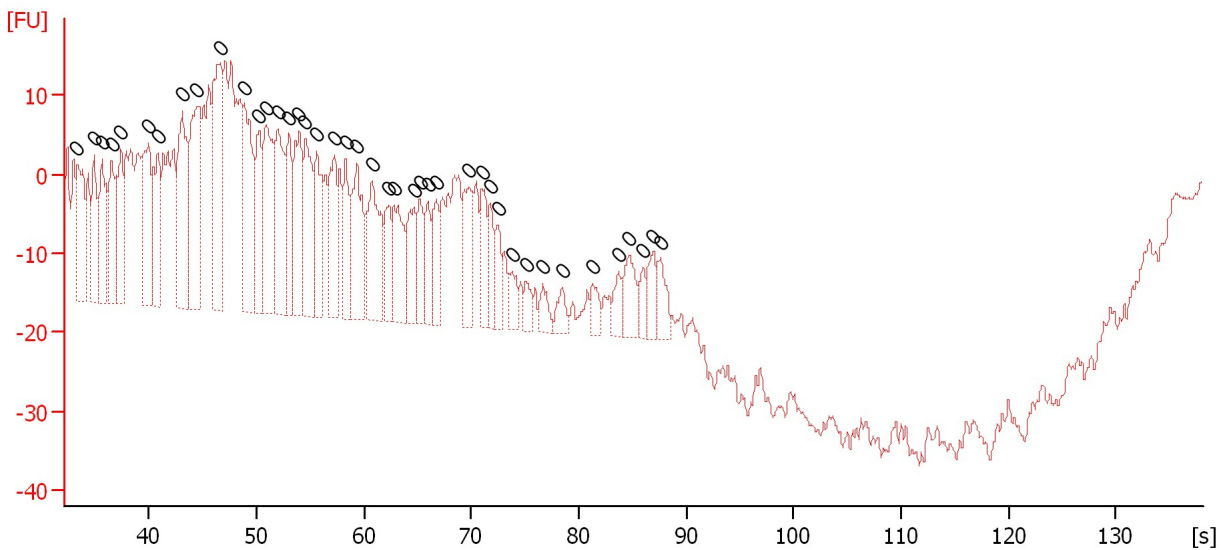
Peak	Size [bp]	Conc. [pg/ $\mu$ l]	Molarity [pmol/l]	Observations
28	0	0.00	0.0	
29	0	0.00	0.0	
30	0	0.00	0.0	
31	0	0.00	0.0	
32	0	0.00	0.0	
33	0	0.00	0.0	
34	0	0.00	0.0	
35	0	0.00	0.0	
36	0	0.00	0.0	
37	0	0.00	0.0	
38	0	0.00	0.0	
39	0	0.00	0.0	
40	0	0.00	0.0	
41	0	0.00	0.0	
42	0	0.00	0.0	
43	0	0.00	0.0	
44	0	0.00	0.0	
45	0	0.00	0.0	
46	0	0.00	0.0	
47	0	0.00	0.0	
48	0	0.00	0.0	
49	0	0.00	0.0	
50	0	0.00	0.0	
51	0	0.00	0.0	
52	0	0.00	0.0	
53	0	0.00	0.0	
54	0	0.00	0.0	
55	0	0.00	0.0	

Assay Class: High Sensitivity DNA Assay  
 Data Path: C:\...ents and Settings\Bioanalyzer\2012-04-04\2012-04-04\_002.xad

Created: 4/4/2012 10:21:42 AM  
 Modified: 4/4/2012 10:57:30 AM

**Electropherogram Summary Continued ...**

Apple 517



**Overall Results for sample 2 : Apple 517**

Number of peaks found: 0                      Noise: 0.8

**Peak table for sample 2 : Apple 517**

Peak	Size [bp]	Conc. [pg/µl]	Molarity [pmol/l]	Observations
1	0	0.00	0.0	
2	0	0.00	0.0	
3	0	0.00	0.0	
4	0	0.00	0.0	
5	0	0.00	0.0	
6	0	0.00	0.0	
7	0	0.00	0.0	
8	0	0.00	0.0	
9	0	0.00	0.0	
10	0	0.00	0.0	
11	0	0.00	0.0	
12	0	0.00	0.0	
13	0	0.00	0.0	
14	0	0.00	0.0	
15	0	0.00	0.0	
16	0	0.00	0.0	
17	0	0.00	0.0	
18	0	0.00	0.0	
19	0	0.00	0.0	
20	0	0.00	0.0	
21	0	0.00	0.0	
22	0	0.00	0.0	
23	0	0.00	0.0	
24	0	0.00	0.0	
25	0	0.00	0.0	
26	0	0.00	0.0	
27	0	0.00	0.0	

Assay Class: High Sensitivity DNA Assay  
Data Path: C:\...ents and Settings\Bioanalyzer\2012-04-04\2012-04-04\_002.xad

Created: 4/4/2012 10:21:42 AM  
Modified: 4/4/2012 10:57:30 AM

**Electropherogram Summary Continued ...****... Peak table for sample 2 : Apple 517**

Peak	Size [bp]	Conc. [pg/μl]	Molarity [pmol/l]	Observations
28	0	0.00	0.0	
29	0	0.00	0.0	
30	0	0.00	0.0	
31	0	0.00	0.0	
32	0	0.00	0.0	
33	0	0.00	0.0	
34	0	0.00	0.0	
35	0	0.00	0.0	
36	0	0.00	0.0	
37	0	0.00	0.0	
38	0	0.00	0.0	
39	0	0.00	0.0	
40	0	0.00	0.0	
41	0	0.00	0.0	
42	0	0.00	0.0	

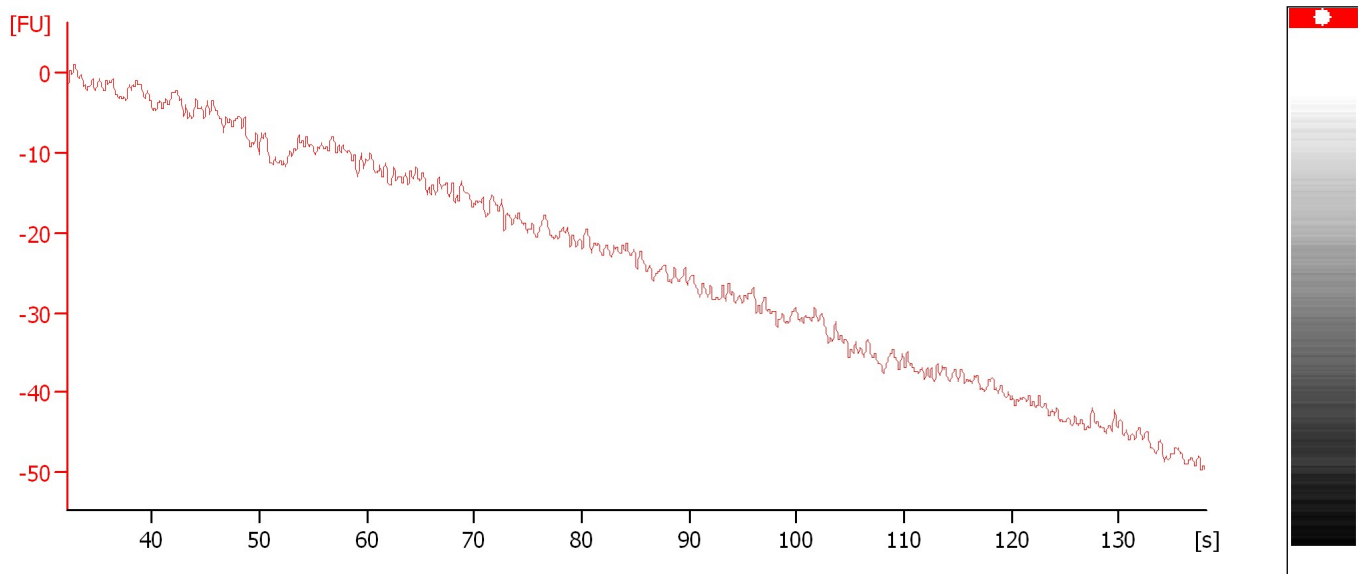


Assay Class: High Sensitivity DNA Assay  
Data Path: C:\...ents and Settings\Bioanalyzer\2012-04-04\2012-04-04\_002.xad

Created: 4/4/2012 10:21:42 AM  
Modified: 4/4/2012 10:57:30 AM

**Electropherogram Summary Continued ...**

B 05.10



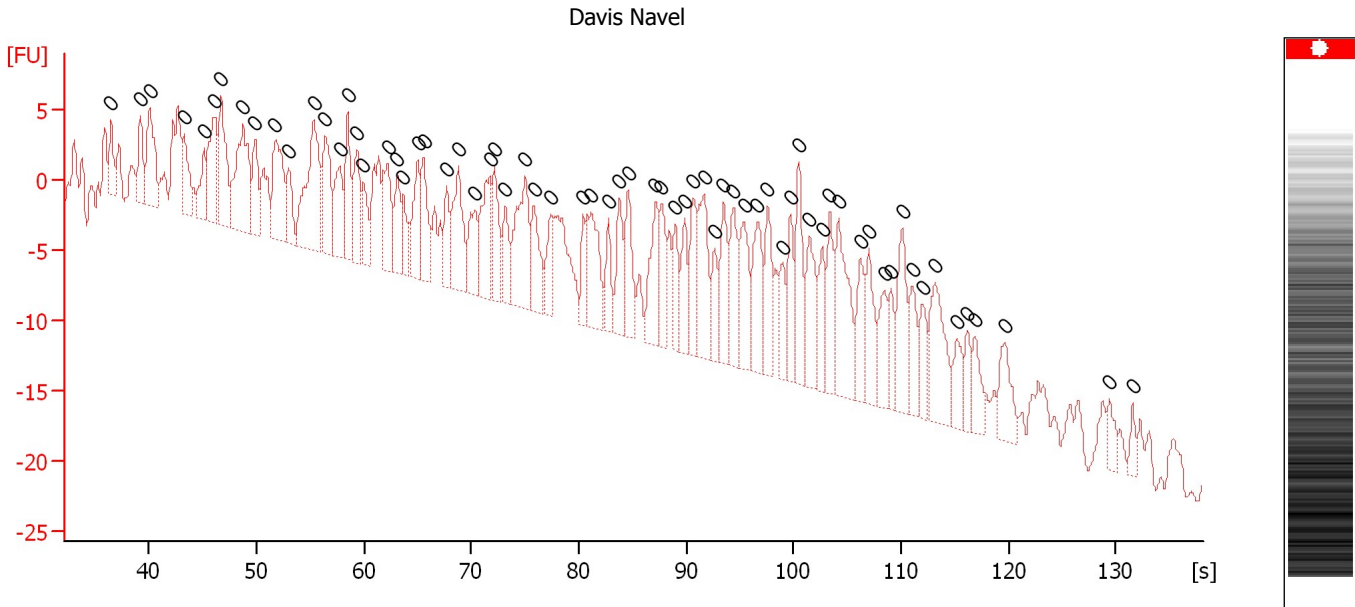
**Overall Results for sample 3 : B 05.10**

Noise: 1.2

Assay Class: High Sensitivity DNA Assay  
 Data Path: C:\...ents and Settings\Bioanalyzer\2012-04-04\2012-04-04\_002.xad

Created: 4/4/2012 10:21:42 AM  
 Modified: 4/4/2012 10:57:30 AM

**Electropherogram Summary Continued ...**



**Overall Results for sample 4 : Davis Navel**

Number of peaks found: 0                      Noise: 1.5

**Peak table for sample 4 : Davis Navel**

Peak	Size [bp]	Conc. [pg/µl]	Molarity [pmol/l]	Observations
1	0	0.00	0.0	
2	0	0.00	0.0	
3	0	0.00	0.0	
4	0	0.00	0.0	
5	0	0.00	0.0	
6	0	0.00	0.0	
7	0	0.00	0.0	
8	0	0.00	0.0	
9	0	0.00	0.0	
10	0	0.00	0.0	
11	0	0.00	0.0	
12	0	0.00	0.0	
13	0	0.00	0.0	
14	0	0.00	0.0	
15	0	0.00	0.0	
16	0	0.00	0.0	
17	0	0.00	0.0	
18	0	0.00	0.0	
19	0	0.00	0.0	
20	0	0.00	0.0	
21	0	0.00	0.0	
22	0	0.00	0.0	
23	0	0.00	0.0	
24	0	0.00	0.0	
25	0	0.00	0.0	
26	0	0.00	0.0	
27	0	0.00	0.0	

Assay Class: High Sensitivity DNA Assay  
Data Path: C:\...ents and Settings\Bioanalyzer\2012-04-04\2012-04-04\_002.xad

Created: 4/4/2012 10:21:42 AM  
Modified: 4/4/2012 10:57:30 AM

**Electropherogram Summary Continued ...**

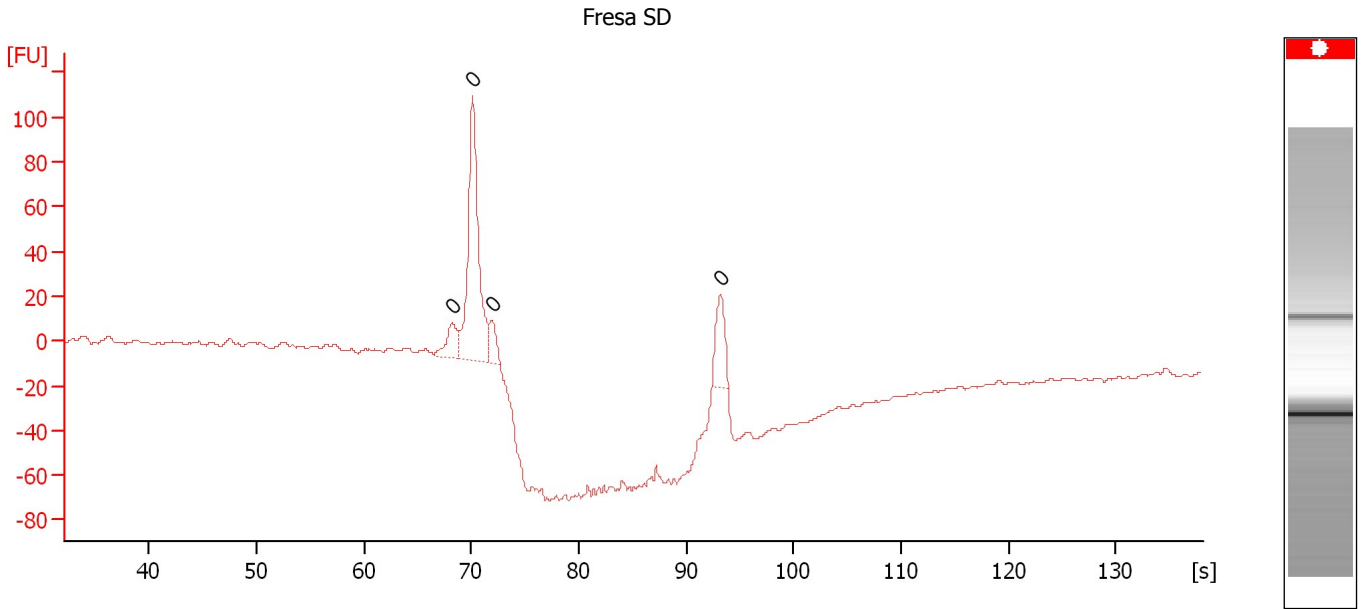
**... Peak table for sample 4 : Davis Navel**

Peak	Size [bp]	Conc. [pg/μl]	Molarity [pmol/l]	Observations
28	0	0.00	0.0	
29	0	0.00	0.0	
30	0	0.00	0.0	
31	0	0.00	0.0	
32	0	0.00	0.0	
33	0	0.00	0.0	
34	0	0.00	0.0	
35	0	0.00	0.0	
36	0	0.00	0.0	
37	0	0.00	0.0	
38	0	0.00	0.0	
39	0	0.00	0.0	
40	0	0.00	0.0	
41	0	0.00	0.0	
42	0	0.00	0.0	
43	0	0.00	0.0	
44	0	0.00	0.0	
45	0	0.00	0.0	
46	0	0.00	0.0	
47	0	0.00	0.0	
48	0	0.00	0.0	
49	0	0.00	0.0	
50	0	0.00	0.0	
51	0	0.00	0.0	
52	0	0.00	0.0	
53	0	0.00	0.0	
54	0	0.00	0.0	
55	0	0.00	0.0	
56	0	0.00	0.0	
57	0	0.00	0.0	
58	0	0.00	0.0	
59	0	0.00	0.0	
60	0	0.00	0.0	
61	0	0.00	0.0	
62	0	0.00	0.0	
63	0	0.00	0.0	
64	0	0.00	0.0	
65	0	0.00	0.0	
66	0	0.00	0.0	
67	0	0.00	0.0	
68	0	0.00	0.0	
69	0	0.00	0.0	

Assay Class: High Sensitivity DNA Assay  
Data Path: C:\...ents and Settings\Bioanalyzer\2012-04-04\2012-04-04\_002.xad

Created: 4/4/2012 10:21:42 AM  
Modified: 4/4/2012 10:57:30 AM

**Electropherogram Summary Continued ...**



**Overall Results for sample 5 : Fresa SD**

Number of peaks found: 0      Noise: 0.6

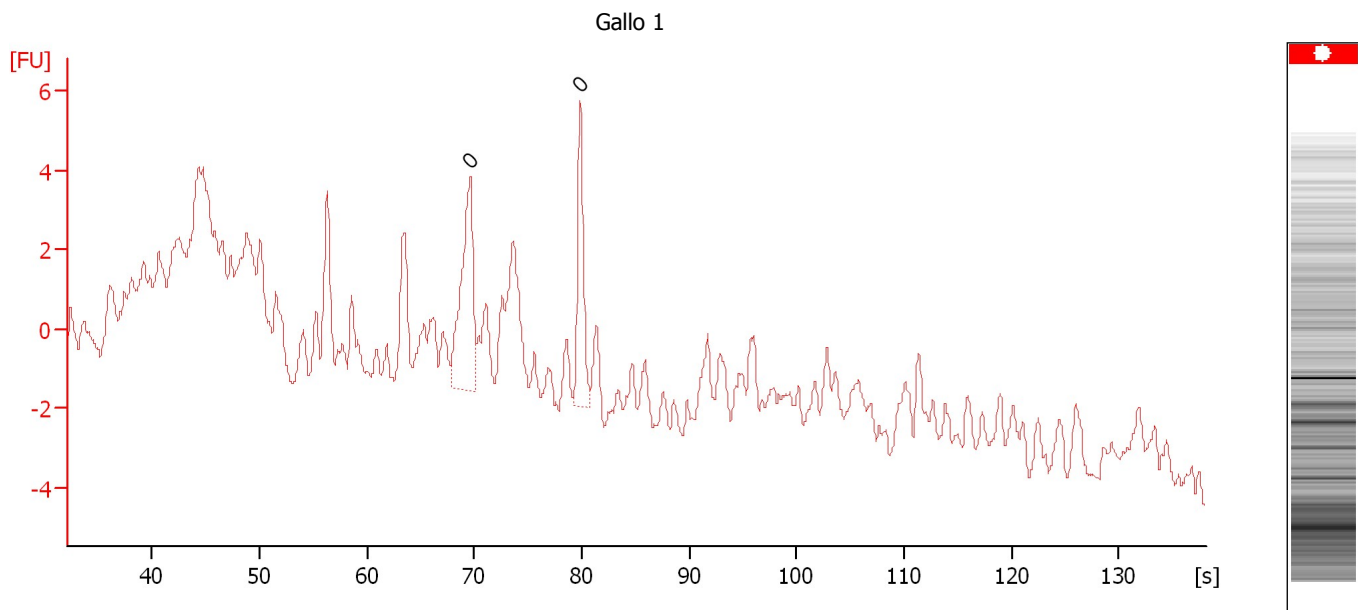
**Peak table for sample 5 : Fresa SD**

Peak	Size [bp]	Conc. [pg/μl]	Molarity [pmol/l]	Observations
1	0	0.00	0.0	
2	0	0.00	0.0	
3	0	0.00	0.0	
4	0	0.00	0.0	

Assay Class: High Sensitivity DNA Assay  
 Data Path: C:\...ents and Settings\Bioanalyzer\2012-04-04\2012-04-04\_002.xad

Created: 4/4/2012 10:21:42 AM  
 Modified: 4/4/2012 10:57:30 AM

**Electropherogram Summary Continued ...**



**Overall Results for sample 6 : Gallo 1**

Number of peaks found: 0                      Noise: 0.3

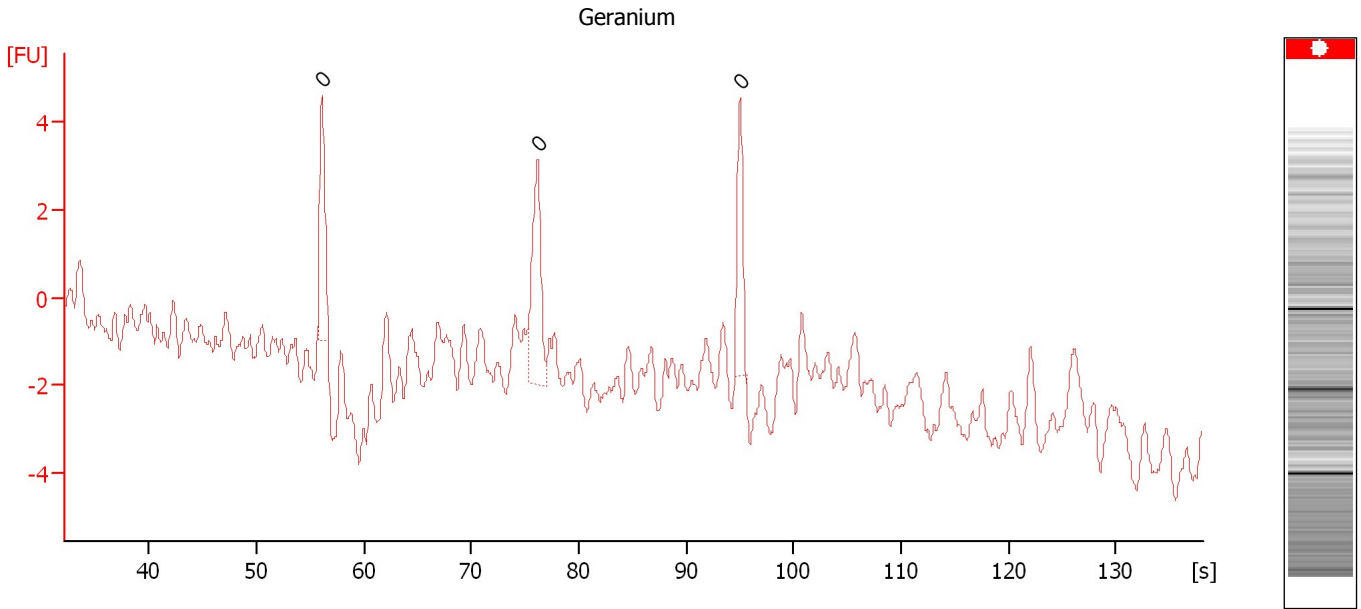
**Peak table for sample 6 : Gallo 1**

Peak	Size [bp]	Conc. [pg/μl]	Molarity [pmol/l]	Observations
1	0	0.00	0.0	
2	0	0.00	0.0	

Assay Class: High Sensitivity DNA Assay  
Data Path: C:\...ents and Settings\Bioanalyzer\2012-04-04\2012-04-04\_002.xad

Created: 4/4/2012 10:21:42 AM  
Modified: 4/4/2012 10:57:30 AM

**Electropherogram Summary Continued ...**



**Overall Results for sample 7 : Geranium**

Number of peaks found: 0      Noise: 0.3

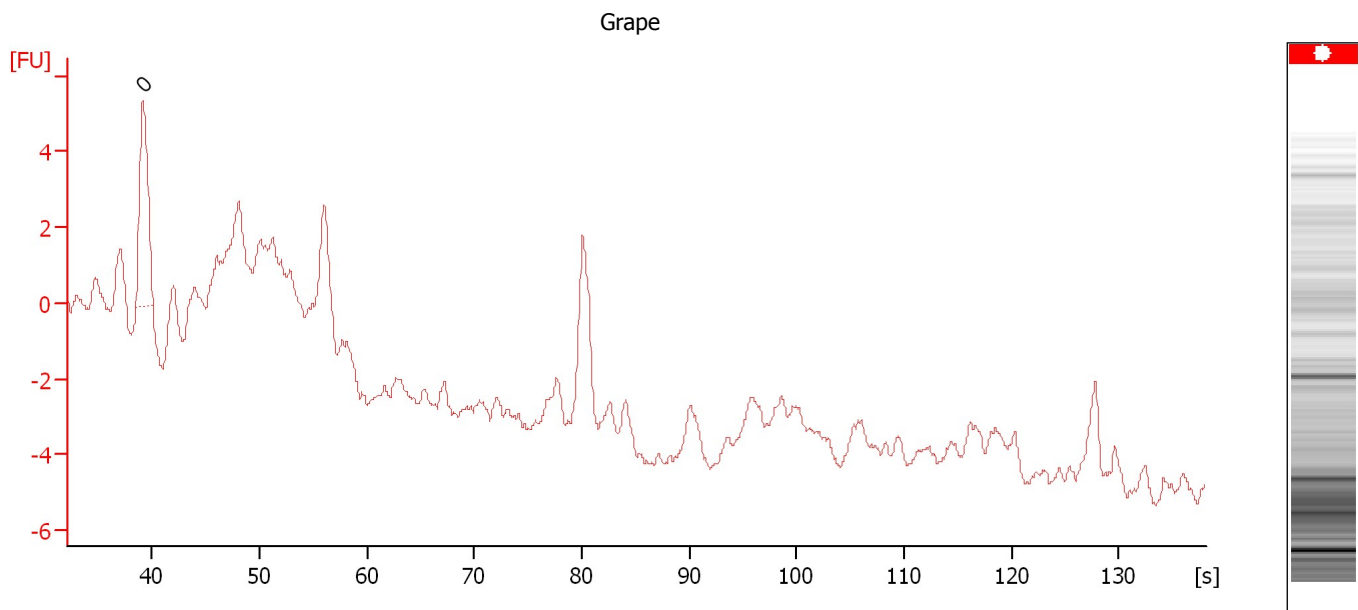
**Peak table for sample 7 : Geranium**

Peak	Size [bp]	Conc. [pg/μl]	Molarity [pmol/l]	Observations
1	0	0.00	0.0	
2	0	0.00	0.0	
3	0	0.00	0.0	

Assay Class: High Sensitivity DNA Assay  
 Data Path: C:\...ents and Settings\Bioanalyzer\2012-04-04\2012-04-04\_002.xad

Created: 4/4/2012 10:21:42 AM  
 Modified: 4/4/2012 10:57:30 AM

**Electropherogram Summary Continued ...**



**Overall Results for sample 8 : Grape**

Number of peaks found: 0                      Noise: 0.2

**Peak table for sample 8 : Grape**

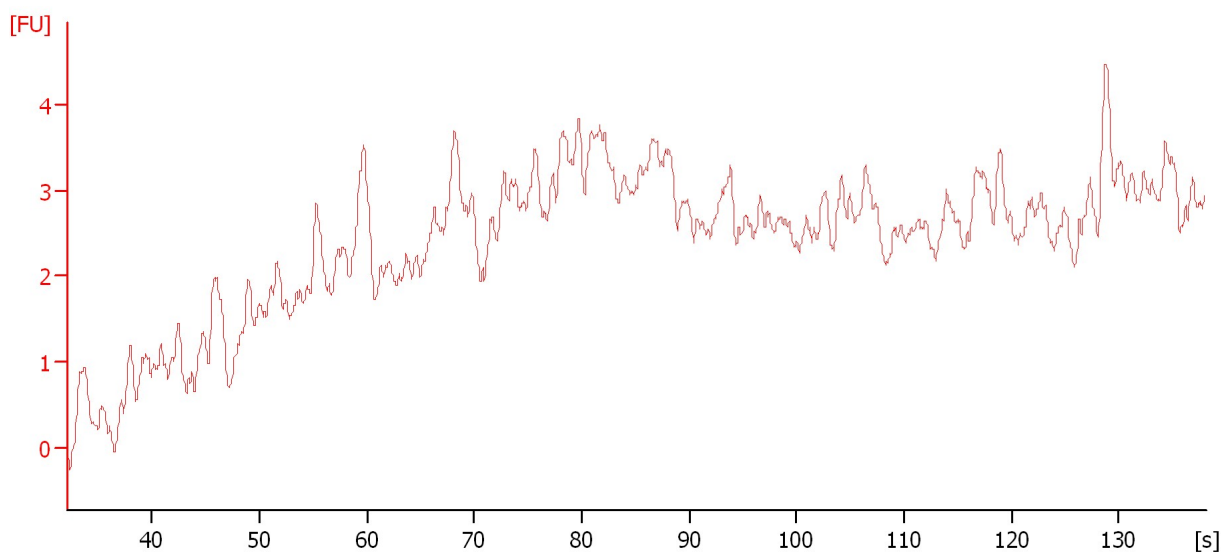
Peak	Size [bp]	Conc. [pg/μl]	Molarity [pmol/l]	Observations
1	0	0.00	0.0	

Assay Class: High Sensitivity DNA Assay  
Data Path: C:\...ents and Settings\Bioanalyzer\2012-04-04\2012-04-04\_002.xad

Created: 4/4/2012 10:21:42 AM  
Modified: 4/4/2012 10:57:30 AM

**Electropherogram Summary Continued ...**

sample 9



**Overall Results for sample 9 : sample 9**

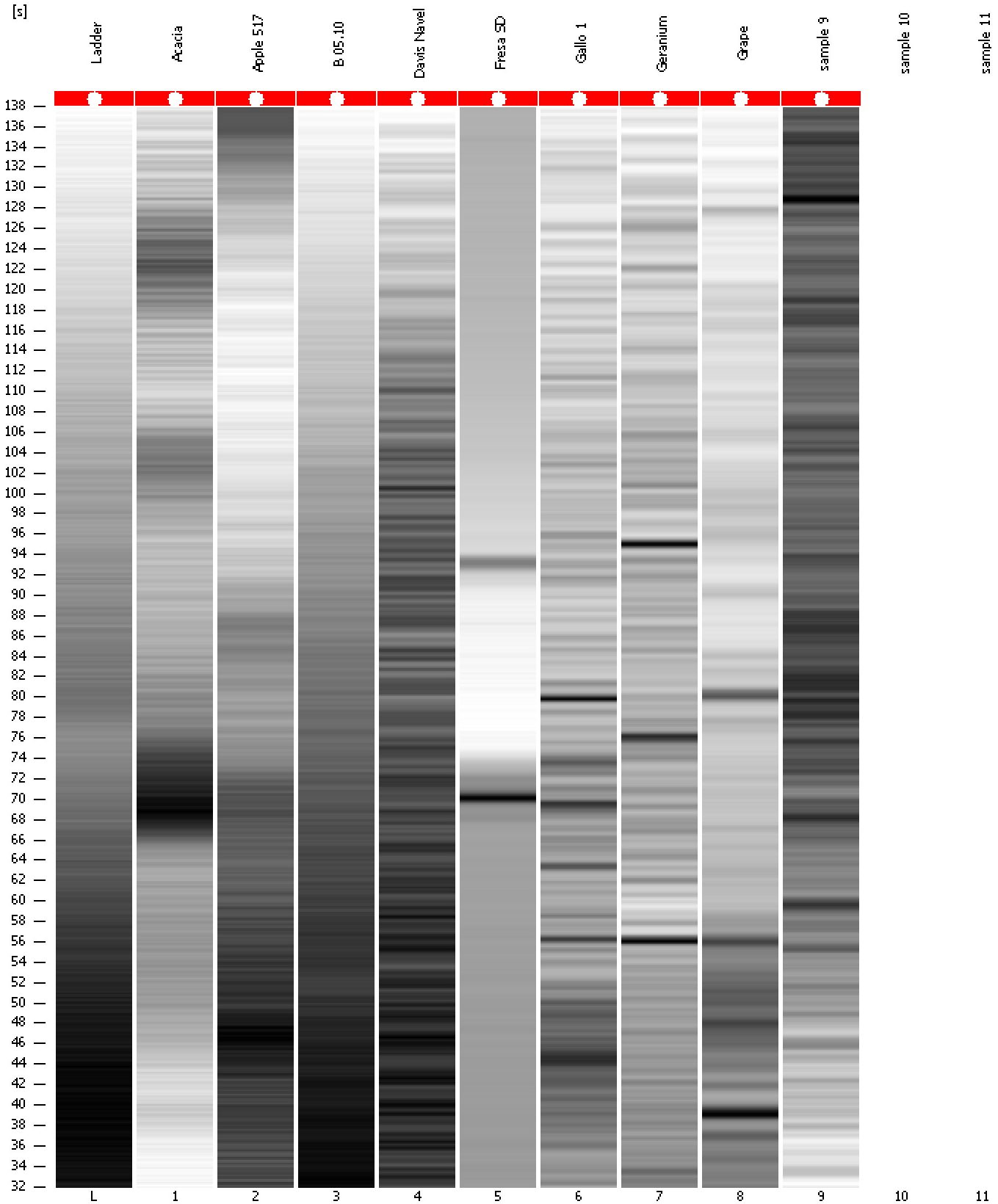
Noise: 0.1



Assay Class: High Sensitivity DNA Assay  
Data Path: C:\...ents and Settings\Bioanalyzer\2012-04-04\2012-04-04\_002.xad

Created: 4/4/2012 10:21:42 AM  
Modified: 4/4/2012 10:57:30 AM

**Gel Image**



Assay Class: High Sensitivity DNA Assay  
Data Path: C:\...ents and Settings\Bioanalyzer\2012-04-04\2012-04-04\_002.xad

Created: 4/4/2012 10:21:42 AM  
Modified: 4/4/2012 10:57:30 AM

**Invalid Samples**

Sample 10 has not been run, no results available.

Sample 11 has not been run, no results available.

Assay Class: High Sensitivity DNA Assay  
 Data Path: C:\...ents and Settings\Bioanalyzer\2012-04-04\2012-04-04\_002.xad

Created: 4/4/2012 10:21:42 AM  
 Modified: 4/4/2012 10:57:30 AM

**Run Logbook**

Description	Number	Source	Category	Sub Category	Time	Time Zone	User	Host
Run aborted on port 1		Instrument	Run		4/4/2012 10:57:27 AM	(GMT --07:00) Pacific Standard Time	UC Davis	D8XSMGH1
Run started on port 1 (File: C:\Documents and Settings\Bioanalyzer\2012-04-04\2012-04-04_002.xad)		Instrument	Run		4/4/2012 10:21:48 AM	(GMT --07:00) Pacific Standard Time	UC Davis	D8XSMGH1
Product Number : G2938B		Instrument	Run		4/4/2012 10:21:48 AM	(GMT --07:00) Pacific Standard Time	UC Davis	D8XSMGH1
Name :		Instrument	Run		4/4/2012 10:21:48 AM	(GMT --07:00) Pacific Standard Time	UC Davis	D8XSMGH1
Vendor : Agilent Technologies		Instrument	Run		4/4/2012 10:21:48 AM	(GMT --07:00) Pacific Standard Time	UC Davis	D8XSMGH1
Serial# : DE13701086		Instrument	Run		4/4/2012 10:21:48 AM	(GMT --07:00) Pacific Standard Time	UC Davis	D8XSMGH1
Firmware : C.01.069		Instrument	Run		4/4/2012 10:21:48 AM	(GMT --07:00) Pacific Standard Time	UC Davis	D8XSMGH1
Cartridge : Electrode		Instrument	Run		4/4/2012 10:21:48 AM	(GMT --07:00) Pacific Standard Time	UC Davis	D8XSMGH1