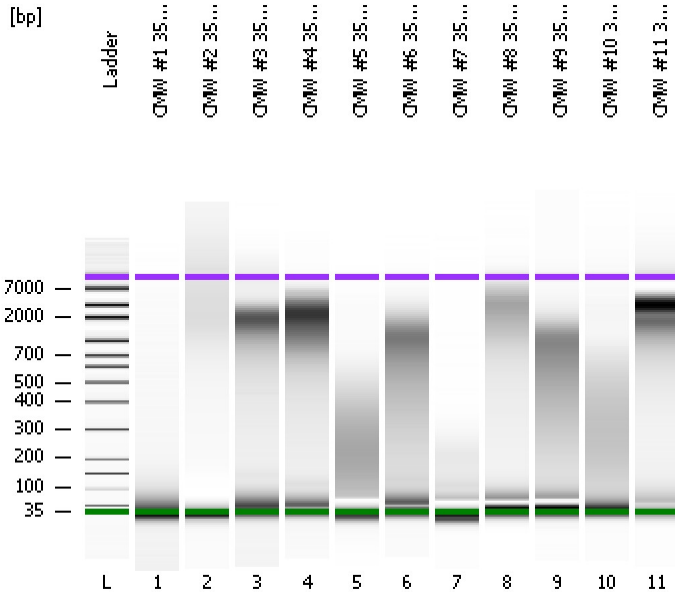


Assay Class: High Sensitivity DNA Assay
Data Path: C:\...ents and Settings\Bioanalyzer\2012-04-04\2012-04-04_003.xad

Created: 4/4/2012 11:17:29 AM
Modified: 4/4/2012 12:01:09 PM

Electrophoresis File Run Summary



Instrument Information:

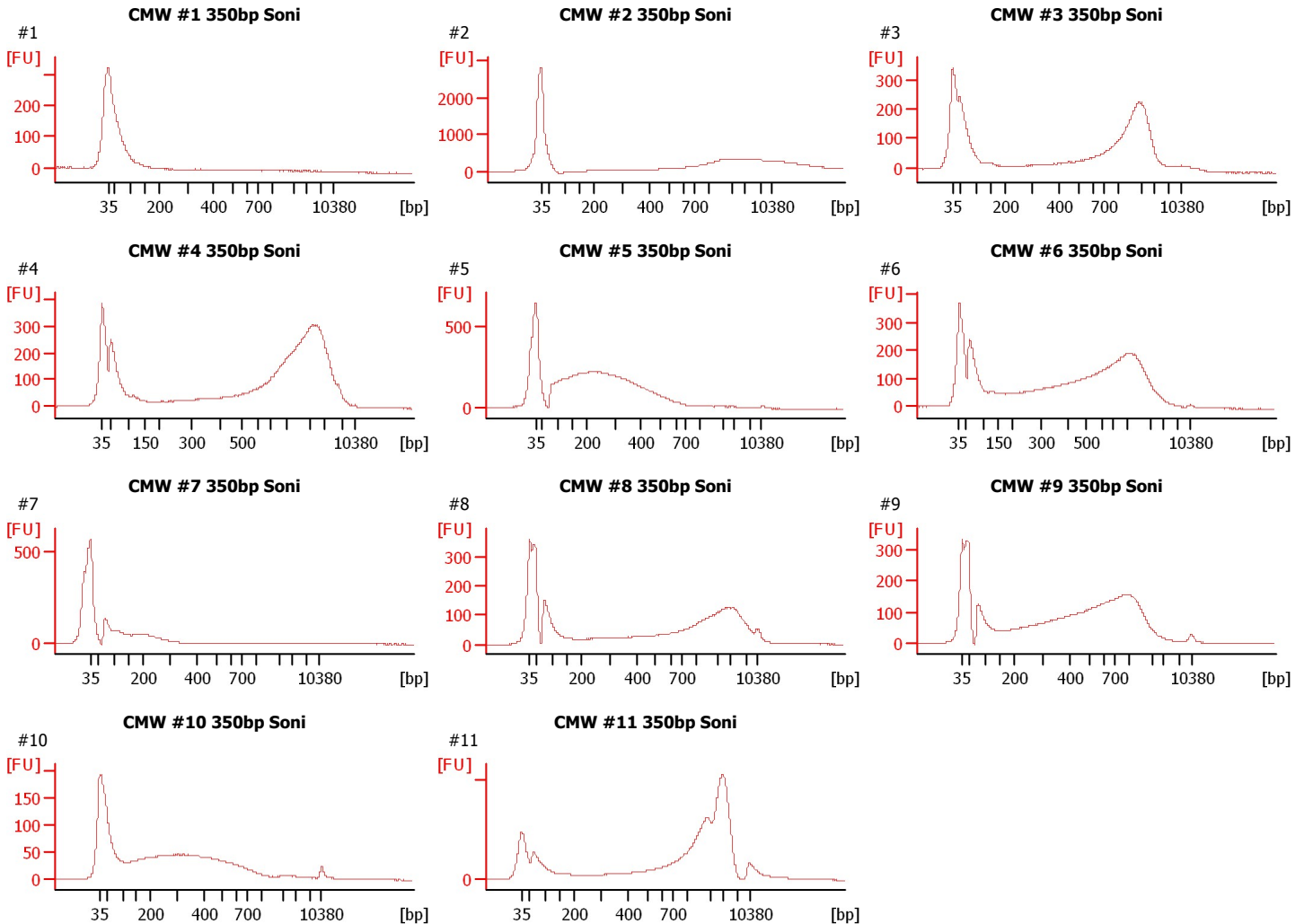
Instrument Name: DE13701086 Firmware: C.01.069
Serial#: DE13701086 Type: G2938B

Assay Information:

Assay Origin Path: C:\Program Files\Agilent\2100 bioanalyzer\2100 expert\assays\dsDNA\High Sensitivity DNA.xsy
Assay Class: High Sensitivity DNA Assay
Version: 1.03
Assay Comments: Copyright © 2003-2010 Agilent Technologies

Chip Information:

Chip Lot #:
Reagent Kit Lot #:
Chip Comments:



Assay Class: High Sensitivity DNA Assay
Data Path: C:\...ents and Settings\Bioanalyzer\2012-04-04\2012-04-04_003.xad

Created: 4/4/2012 11:17:29 AM
Modified: 4/4/2012 12:01:09 PM

Electrophoresis File Run Summary (Chip Summary)

Sample Name	Sample Comment	Rest. Digest	Status	Observation	Result Label	Result Color
CMW #1 350bp Soni	#1	<input type="checkbox"/>	✓			
CMW #2 350bp Soni	#2	<input type="checkbox"/>	✓			
CMW #3 350bp Soni	#3	<input type="checkbox"/>	✓			
CMW #4 350bp Soni	#4	<input type="checkbox"/>	✓			
CMW #5 350bp Soni	#5	<input type="checkbox"/>	✓			
CMW #6 350bp Soni	#6	<input type="checkbox"/>	✓			
CMW #7 350bp Soni	#7	<input type="checkbox"/>	✓			
CMW #8 350bp Soni	#8	<input type="checkbox"/>	✓			
CMW #9 350bp Soni	#9	<input type="checkbox"/>	✓			
CMW #10 350bp Soni	#10	<input type="checkbox"/>	✓			
CMW #11 350bp Soni	#11	<input type="checkbox"/>	✓			
Ladder		<input type="checkbox"/>	✓			

Chip Lot #**Reagent Kit Lot #****Chip Comments :**

Assay Class: High Sensitivity DNA Assay
Data Path: C:\...ents and Settings\Bioanalyzer\2012-04-04\2012-04-04_003.xad

Created: 4/4/2012 11:17:29 AM
Modified: 4/4/2012 12:01:09 PM

Electrophoresis Assay Details

General Analysis Settings

Number of Available Sample and Ladder Wells (Max.) : 12
Minimum Visible Range [s] : 32
Maximum Visible Range [s] : 138
Start Analysis Time Range [s] : 33
End Analysis Time Range [s] : 137.5
Ladder Concentration [pg/μl] : 1950
Uses Standard Area for Ladder Fragments
Lower Marker Concentration [pg/μl] : 125
Upper Marker Concentration [pg/μl] : 75
Used Upper Marker for Quantitation
Standard Curve Fit is Point to Point
Show Data Aligned to Lower and Upper Marker

Integrator Settings

Integration Start Time [s] : 33.05
Integration End Time [s] : 137
Slope Threshold : 0.8
Height Threshold [FU] : 5
Area Threshold : 0.1
Width Threshold [s] : 0.6
Baseline Plateau [s] : 0.5

Filter Settings

Filter Width [s] : 0.5
Polynomial Order : 4

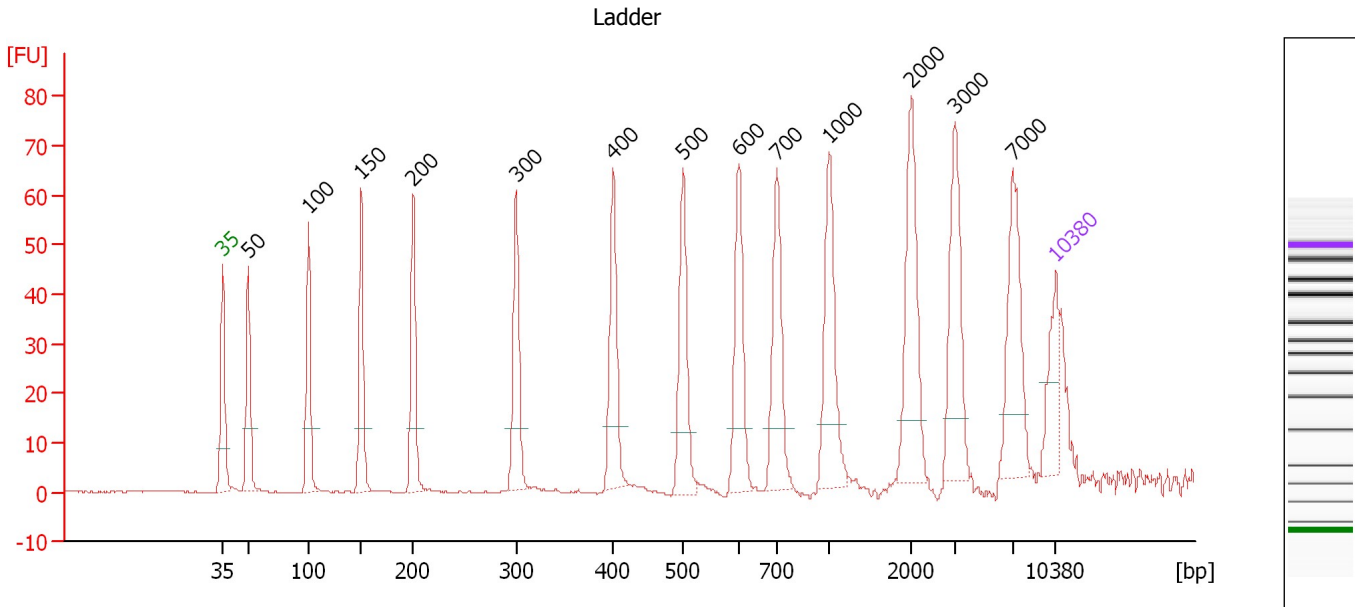
Ladder

Ladder Peak	Size	Area
1	35	160
2	50	210
3	100	208
4	150	221
5	200	242
6	300	270
7	400	305
8	500	306
9	600	336
10	700	321
11	1000	366
12	2000	413
13	3000	411
14	7000	400
15	10380	214

Assay Class: High Sensitivity DNA Assay
 Data Path: C:\...ents and Settings\Bioanalyzer\2012-04-04\2012-04-04_003.xad

Created: 4/4/2012 11:17:29 AM
 Modified: 4/4/2012 12:01:09 PM

Electropherogram Summary



Overall Results for Ladder

Noise: 0.1

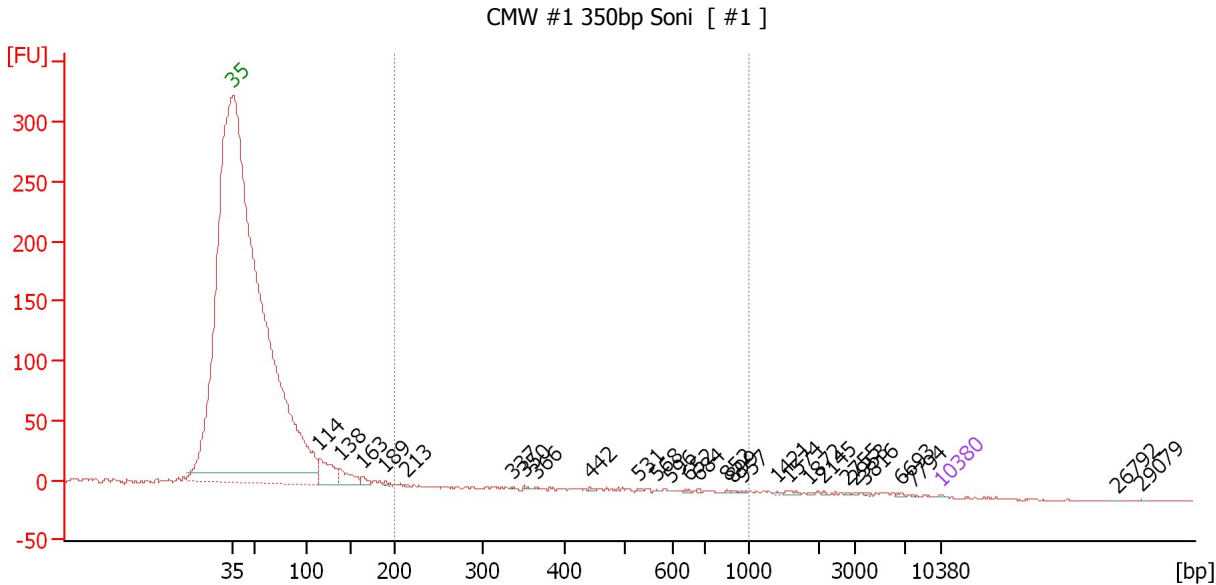
Peak table for Ladder

Peak	Size [bp]	Conc. [pg/µl]	Molarity [pmol/l]	Observations
1	35	125.00	5,411.3	Lower Marker
2	50	150.00	4,545.5	Ladder Peak
3	100	150.00	2,272.7	Ladder Peak
4	150	150.00	1,515.2	Ladder Peak
5	200	150.00	1,136.4	Ladder Peak
6	300	150.00	757.6	Ladder Peak
7	400	150.00	568.2	Ladder Peak
8	500	150.00	454.5	Ladder Peak
9	600	150.00	378.8	Ladder Peak
10	700	150.00	324.7	Ladder Peak
11	1,000	150.00	227.3	Ladder Peak
12	2,000	150.00	113.6	Ladder Peak
13	3,000	150.00	75.8	Ladder Peak
14	7,000	150.00	32.5	Ladder Peak
15	10,380	75.00	10.9	Upper Marker

Assay Class: High Sensitivity DNA Assay
 Data Path: C:\...ents and Settings\Bioanalyzer\2012-04-04\2012-04-04_003.xad

Created: 4/4/2012 11:17:29 AM
 Modified: 4/4/2012 12:01:09 PM

Electropherogram Summary Continued ...



Setpoint Deviations for sample 1 : CMW #1 350bp Soni

Height Threshold [FU] : 0.1

Overall Results for sample 1 : CMW #1 350bp Soni

Number of peaks found: 28 Corr. Area 1: 17.4
 Noise: 0.4

Peak table for sample 1 : CMW #1 350bp Soni

Peak	Size [bp]	Conc. [pg/μl]	Molarity [pmol/l]	Observations
1	35	125.00	5,411.3	Lower Marker
2	114	6,741.45	89,286.0	
3	138	3,758.59	41,391.3	
4	163	927.00	8,594.8	
5	189	343.06	2,751.6	
6	213	107.45	763.5	
7	337	41.64	187.0	
8	350	68.06	294.4	
9	366	47.34	195.7	
10	442	106.37	364.3	
11	531	119.08	339.6	
12	568	65.56	174.8	
13	596	54.35	138.1	
14	652	108.52	252.0	
15	684	94.25	208.8	
16	852	75.69	134.5	
17	899	73.04	123.0	
18	957	87.07	137.9	
19	1,421	71.31	76.0	
20	1,574	208.72	201.0	
21	1,872	69.65	56.4	
22	2,145	77.87	55.0	

Assay Class: High Sensitivity DNA Assay
 Data Path: C:\...ents and Settings\Bioanalyzer\2012-04-04\2012-04-04_003.xad

Created: 4/4/2012 11:17:29 AM
 Modified: 4/4/2012 12:01:09 PM

Electropherogram Summary Continued ...

... Peak table for sample 1 : CMW #1 350bp Soni

Peak	Size [bp]	Conc. [pg/μl]	Molarity [pmol/l]	Observations
23	2,755	67.71	37.2	
24	2,953	85.80	44.0	
25	3,816	118.12	46.9	
26	6,693	113.53	25.7	
27	7,794	37.10	7.2	
28	10,380	75.00	10.9	Upper Marker
29	26,792	0.00	0.0	
30	29,079	0.00	0.0	

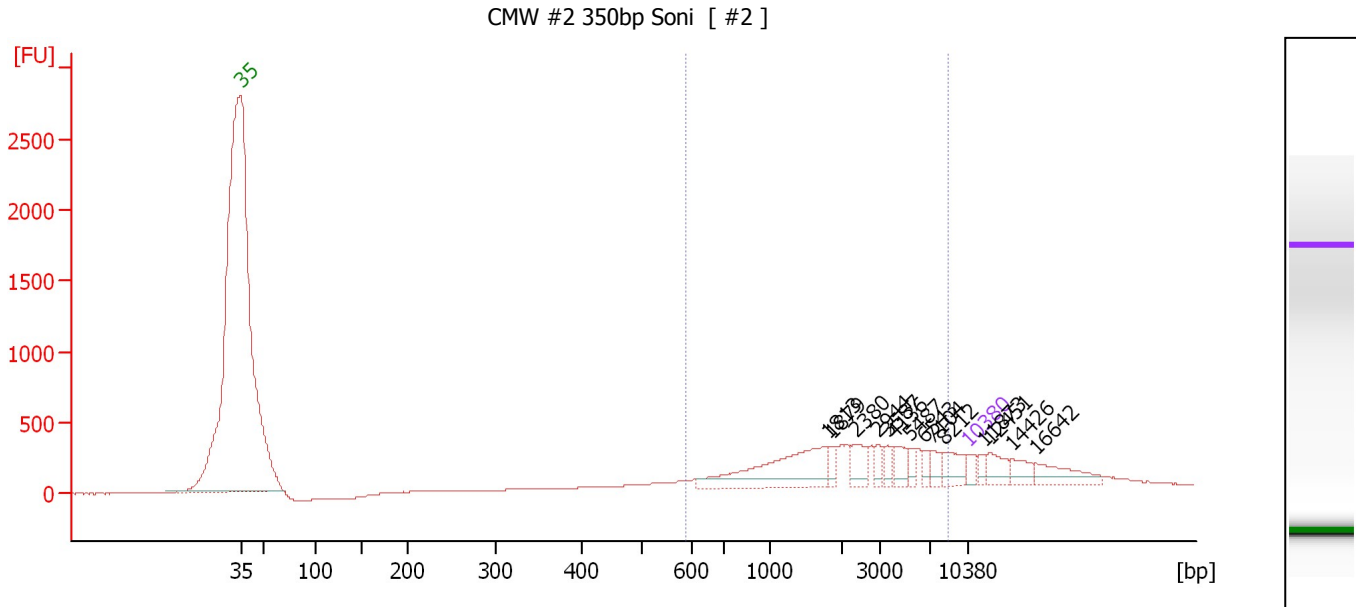
Region table for sample 1 : CMW #1 350bp Soni

From [bp]	Molarity [pmol/l]	Average Size [bp]	Conc. [pg/μl]	To [bp]	Corr. Area	% of Total	Size distribution in CV [%]	Color
200	5,300.6	535	1,448.08	1,000	17.4	11	37.4	

Assay Class: High Sensitivity DNA Assay
 Data Path: C:\...ents and Settings\Bioanalyzer\2012-04-04\2012-04-04_003.xad

Created: 4/4/2012 11:17:29 AM
 Modified: 4/4/2012 12:01:09 PM

Electropherogram Summary Continued ...



Setpoint Deviations for sample 2 : CMW #2 350bp Soni

Height Threshold [FU] : 60

Overall Results for sample 2 : CMW #2 350bp Soni

Number of peaks found: 14 Corr. Area 1: 5,102.1
 Noise: 0.7

Peak table for sample 2 : CMW #2 350bp Soni

Peak	Size [bp]	Conc. [pg/μl]	Molarity [pmol/l]	Observations
1	35	125.00	5,411.3	Lower Marker
2	1,813	774.68	647.6	
3	1,879	85.17	68.7	
4	2,380	177.87	113.2	
5	2,944	76.43	39.3	
6	3,587	75.53	31.9	
7	4,136	136.15	49.9	
8	5,487	65.28	18.0	
9	6,543	70.09	16.2	
10	7,104	84.41	18.0	
11	8,212	167.97	31.0	
12	10,380	75.00	10.9	Upper Marker
13	11,873	0.00	0.0	
14	12,451	0.00	0.0	
15	14,426	0.00	0.0	
16	16,642	0.00	0.0	

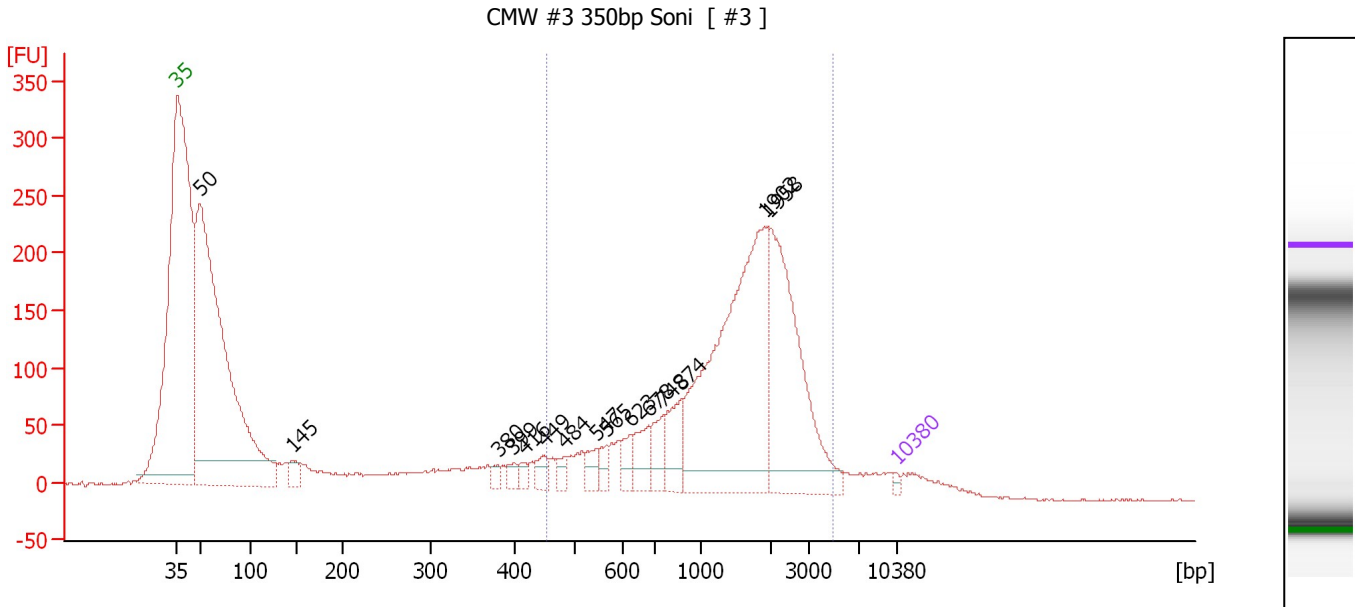
Region table for sample 2 : CMW #2 350bp Soni

From [bp]	Molarity [pmol/l]	Average Size [bp]	Conc. [pg/μl]	To [bp]	Corr. Area	% of Total	Size distribution in CV [%]	Color
591	1,863.3	2,941	2,068.06	8,658	5,102.1	68	72.9	Blue

Assay Class: High Sensitivity DNA Assay
 Data Path: C:\...ents and Settings\Bioanalyzer\2012-04-04\2012-04-04_003.xad

Created: 4/4/2012 11:17:29 AM
 Modified: 4/4/2012 12:01:09 PM

Electropherogram Summary Continued ...



Setpoint Deviations for sample 3 : CMW #3 350bp Soni

Height Threshold [FU] : 20

Overall Results for sample 3 : CMW #3 350bp Soni

Number of peaks found: 15 Corr. Area 1: 2,562.6
 Noise: 0.6

Peak table for sample 3 : CMW #3 350bp Soni

Peak	Size [bp]	Conc. [pg/μl]	Molarity [pmol/l]	Observations
1	35	125.00	5,411.3	Lower Marker
2	50	19,529.13	587,969.9	
3	145	430.45	4,500.8	
4	380	209.31	834.1	
5	399	266.59	1,012.9	
6	416	231.72	843.1	
7	449	395.83	1,336.2	
8	484	305.81	957.0	
9	547	400.95	1,110.9	
10	565	335.44	900.0	
11	623	462.41	1,123.7	
12	678	727.53	1,625.7	
13	748	680.05	1,377.6	
14	874	1,041.31	1,804.8	
15	1,902	7,668.98	6,110.6	
16	1,958	4,922.32	3,808.3	
17	10,380	75.00	10.9	Upper Marker

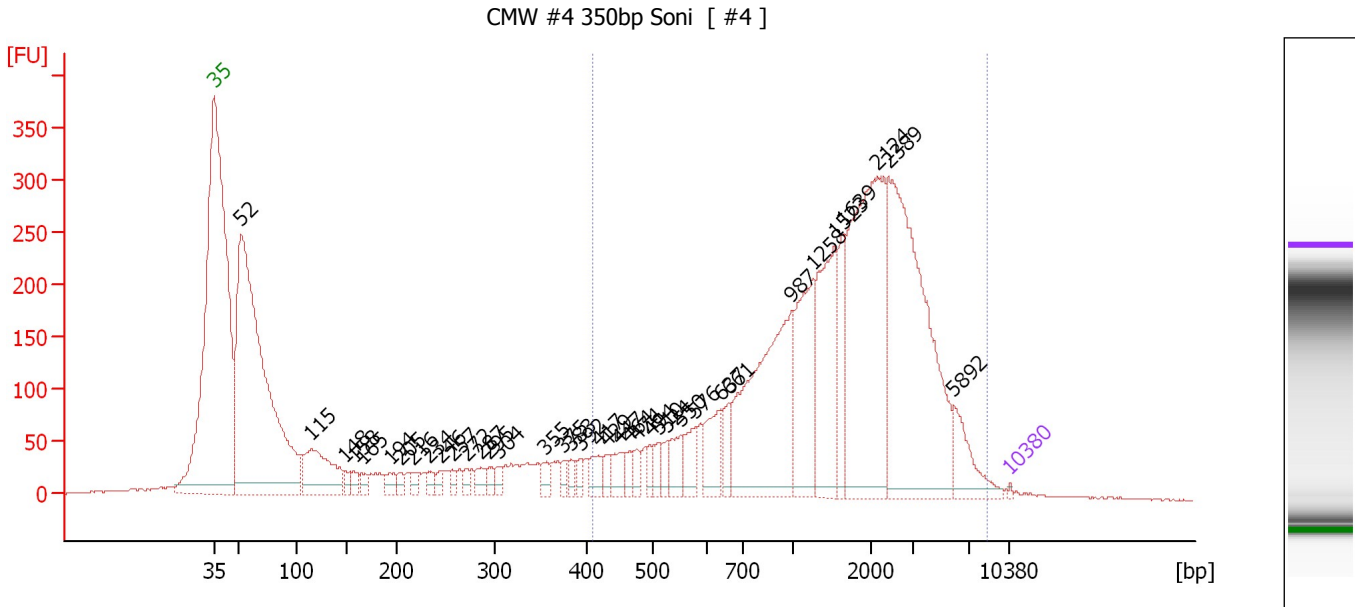
Region table for sample 3 : CMW #3 350bp Soni

From [bp]	Molarity [pmol/l]	Average Size [bp]	Conc. [pg/μl]	To [bp]	Corr. Area	% of Total	Size distribution in CV [%]	Color
453	24,498.9	1,608	18,248.63	4,918	2,562.6	53	49.7	Blue

Assay Class: High Sensitivity DNA Assay
 Data Path: C:\...ents and Settings\Bioanalyzer\2012-04-04\2012-04-04_003.xad

Created: 4/4/2012 11:17:29 AM
 Modified: 4/4/2012 12:01:09 PM

Electropherogram Summary Continued ...



Setpoint Deviations for sample 4 : CMW #4 350bp Soni

Height Threshold [FU] : 10

Overall Results for sample 4 : CMW #4 350bp Soni

Number of peaks found: 38 Corr. Area 1: 4,960.2
 Noise: 1.0

Peak table for sample 4 : CMW #4 350bp Soni


Peak	Size [bp]	Conc. [pg/μl]	Molarity [pmol/l]	Observations
1	35	125.00	5,411.3	Lower Marker
2	52	40,799.11	1,180,020.9	
3	115	6,200.52	81,751.1	
4	148	625.69	6,418.5	
5	158	629.15	6,036.9	
6	165	651.15	5,962.6	
7	194	824.34	6,454.0	
8	205	556.17	4,113.0	
9	216	557.33	3,904.5	
10	234	656.84	4,259.8	
11	246	554.67	3,422.3	
12	257	488.88	2,882.7	
13	272	573.14	3,190.9	
14	287	791.96	4,184.0	
15	295	612.01	3,144.1	
16	304	578.07	2,882.8	
17	355	665.59	2,840.6	
18	375	521.53	2,109.6	
19	383	557.71	2,205.1	
20	392	518.35	2,001.4	
21	417	1,122.40	4,081.8	
22	429	557.13	1,965.8	

Assay Class: High Sensitivity DNA Assay
 Data Path: C:\...ents and Settings\Bioanalyzer\2012-04-04\2012-04-04_003.xad


Created: 4/4/2012 11:17:29 AM
 Modified: 4/4/2012 12:01:09 PM

Electropherogram Summary Continued ...

... Peak table for sample 4 : CMW #4 350bp Soni

Peak	Size [bp]	Conc. [pg/µl]	Molarity [pmol/l]	Observations
23	447	1,109.51	3,760.8	
24	464	637.87	2,083.9	
25	474	653.04	2,086.7	
26	494	653.37	2,003.4	
27	510	772.17	2,295.6	
28	524	735.78	2,129.1	
29	550	1,407.52	3,880.8	
30	576	1,509.25	3,966.9	
31	637	2,409.90	5,728.3	
32	661	1,253.56	2,873.4	
33	987	11,814.36	18,135.7	
34	1,258	5,579.81	6,720.3	
35	1,523	6,243.63	6,210.8	
36	1,639	2,131.92	1,971.2	
37	2,124	13,675.16	9,753.7	
38	2,389	15,774.74	10,003.8	
39	5,892	2,147.00	552.1	
40	 10,380	75.00	10.9	Upper Marker

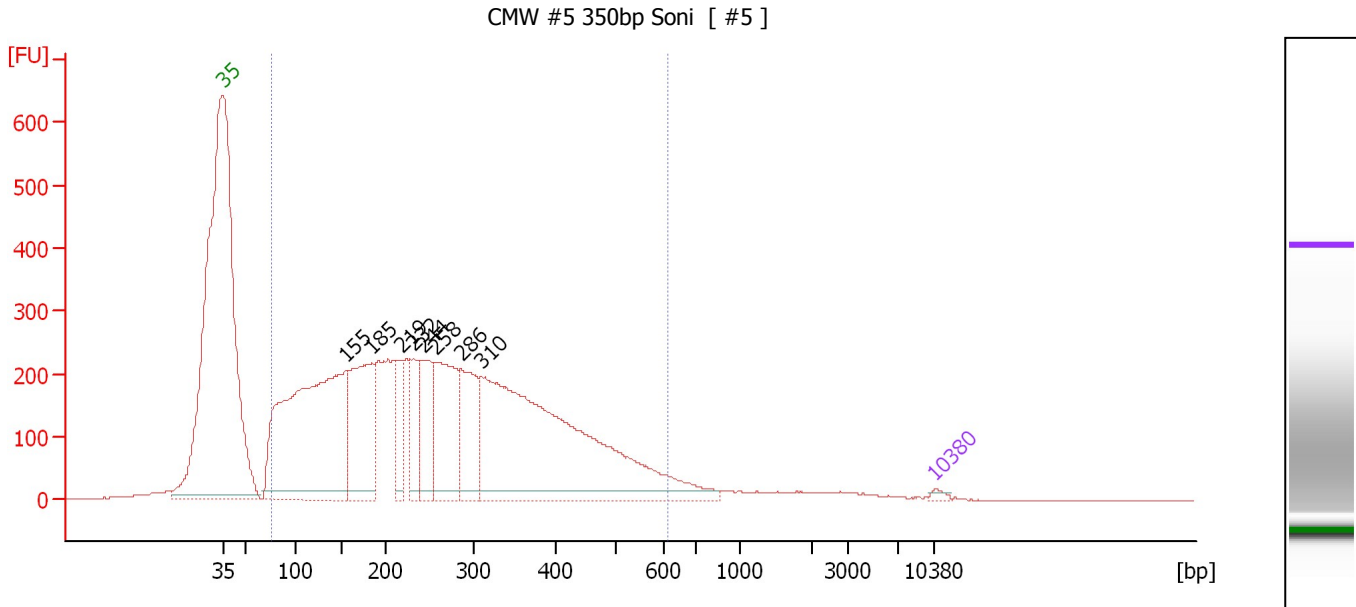
Region table for sample 4 : CMW #4 350bp Soni

From [bp]	Molarity [pmol/l]	Average Size [bp]	Conc. [pg/µl]	To [bp]	Corr. Area	% of Total	Size distribution in CV [%]	Color
410	98,517.7	1,955	73,176.77	8,424	4,960.2	64	71.8	

Assay Class: High Sensitivity DNA Assay
 Data Path: C:\...ents and Settings\Bioanalyzer\2012-04-04\2012-04-04_003.xad

Created: 4/4/2012 11:17:29 AM
 Modified: 4/4/2012 12:01:09 PM

Electropherogram Summary Continued ...



Setpoint Deviations for sample 5 : CMW #5 350bp Soni

Height Threshold [FU] : 15

Overall Results for sample 5 : CMW #5 350bp Soni

Number of peaks found: 8 Corr. Area 1: 9,103.5
 Noise: 0.5

Peak table for sample 5 : CMW #5 350bp Soni

Peak	Size [bp]	Conc. [pg/μl]	Molarity [pmol/l]	Observations
1	35	125.00	5,411.3	Lower Marker
2	155	12,605.32	122,982.4	
3	185	4,471.31	36,530.4	
4	219	1,312.93	9,095.0	
5	232	1,524.22	9,951.9	
6	244	2,046.41	12,697.9	
7	258	3,685.57	21,684.4	
8	286	2,576.54	13,649.1	
9	310	13,851.01	67,785.9	
10	10,380	75.00	10.9	Upper Marker

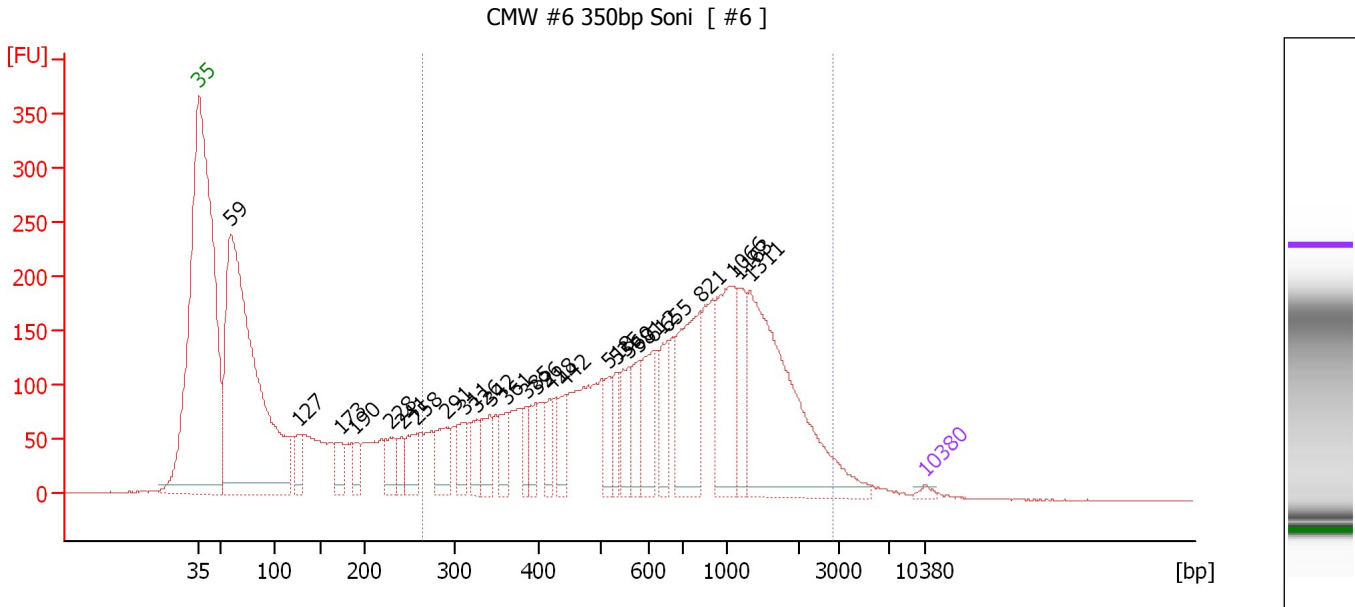
Region table for sample 5 : CMW #5 350bp Soni

From [bp]	Molarity [pmol/l]	Average Size [bp]	Conc. [pg/μl]	To [bp]	Corr. Area	% of Total	Size distribution in CV [%]	Color
76	362,890.1	267	44,964.82	612	9,103.5	94	45.5	Blue

Assay Class: High Sensitivity DNA Assay
 Data Path: C:\...ents and Settings\Bioanalyzer\2012-04-04\2012-04-04_003.xad

Created: 4/4/2012 11:17:29 AM
 Modified: 4/4/2012 12:01:09 PM

Electropherogram Summary Continued ...



Setpoint Deviations for sample 6 : CMW #6 350bp Soni

Height Threshold [FU] : 10

Overall Results for sample 6 : CMW #6 350bp Soni

Number of peaks found: 26 Corr. Area 1: 5,006.7
 Noise: 0.4

Peak table for sample 6 : CMW #6 350bp Soni

Peak	Size [bp]	Conc. [pg/μl]	Molarity [pmol/l]	Observations
1	35	125.00	5,411.3	Lower Marker
2	59	14,943.86	382,560.9	
3	127	622.40	7,430.1	
4	173	673.48	5,894.6	
5	190	446.94	3,570.7	
6	228	722.69	4,811.0	
7	241	495.31	3,110.6	
8	258	776.73	4,563.6	
9	291	928.37	4,841.4	
10	311	721.69	3,518.8	
11	326	556.53	2,582.7	
12	342	762.92	3,383.9	
13	361	669.94	2,810.8	
14	385	447.27	1,760.0	
15	396	548.37	2,099.4	
16	418	596.42	2,163.3	
17	442	687.59	2,355.9	
18	518	638.02	1,864.4	
19	535	563.00	1,594.8	
20	560	802.79	2,172.2	
21	581	738.68	1,927.3	
22	612	1,015.31	2,514.4	

Assay Class: High Sensitivity DNA Assay
 Data Path: C:\...ents and Settings\Bioanalyzer\2012-04-04\2012-04-04_003.xad


Created: 4/4/2012 11:17:29 AM
 Modified: 4/4/2012 12:01:09 PM

Electropherogram Summary Continued ...

... Peak table for sample 6 : CMW #6 350bp Soni

Peak	Size [bp]	Conc. [pg/μl]	Molarity [pmol/l]	Observations
23	655	870.77	2,013.0	
24	821	2,520.06	4,653.2	
25	1,066	2,208.84	3,139.8	
26	1,163	914.65	1,192.0	
27	1,311	4,981.66	5,755.4	
28	10,380	75.00	10.9	Upper Marker

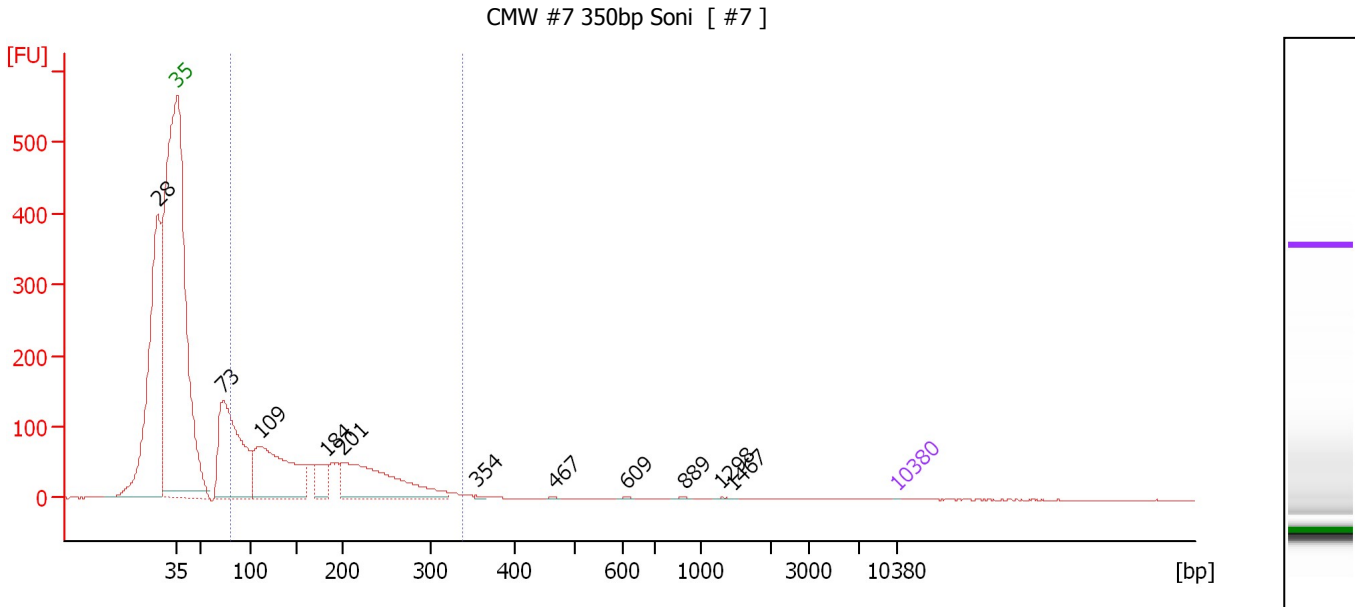
Region table for sample 6 : CMW #6 350bp Soni

From [bp]	Molarity [pmol/l]	Average Size [bp]	Conc. [pg/μl]	To [bp]	Corr. Area	% of Total	Size distribution in CV [%]	Color
264	78,645.4	860	28,754.97	2,860	5,006.7	64	62.7	

Assay Class: High Sensitivity DNA Assay
 Data Path: C:\...ents and Settings\Bioanalyzer\2012-04-04\2012-04-04_003.xad

Created: 4/4/2012 11:17:29 AM
 Modified: 4/4/2012 12:01:09 PM

Electropherogram Summary Continued ...



Setpoint Deviations for sample 7 : CMW #7 350bp Soni

Height Threshold [FU] : 0.5

Overall Results for sample 7 : CMW #7 350bp Soni

Number of peaks found: 11 Corr. Area 1: 1,448.8
 Noise: 0.3

Peak table for sample 7 : CMW #7 350bp Soni

Peak	Size [bp]	Conc. [pg/μl]	Molarity [pmol/l]	Observations
1	28	0.00	0.0	
2	35	125.00	5,411.3	Lower Marker
3	73	302,000.81	6,305,275.0	
4	109	251,288.03	3,477,551.8	
5	184	42,041.34	346,453.9	
6	201	195,378.19	1,475,332.5	
7	354	1,495.81	6,397.3	
8	467	441.42	1,433.0	
9	609	606.88	1,509.6	
10	889	746.07	1,271.2	
11	1,298	521.10	608.3	
12	1,467	71.71	74.1	
13	10,380	75.00	10.9	Upper Marker

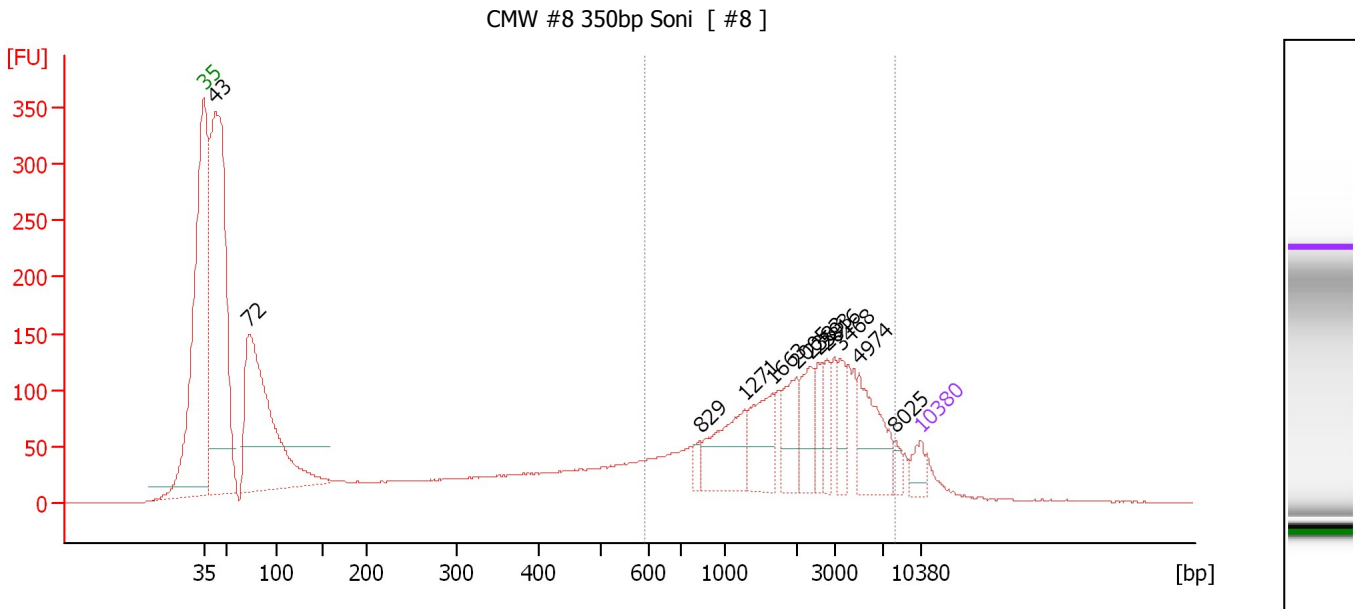
Region table for sample 7 : CMW #7 350bp Soni

From [bp]	Molarity [pmol/l]	Average Size [bp]	Conc. [pg/μl]	To [bp]	Corr. Area	% of Total	Size distribution in CV [%]	Color
80	7,532,468.0	168	685,011.69	338	1,448.8	51	38.8	Blue

Assay Class: High Sensitivity DNA Assay
 Data Path: C:\...ents and Settings\Bioanalyzer\2012-04-04\2012-04-04_003.xad

Created: 4/4/2012 11:17:29 AM
 Modified: 4/4/2012 12:01:09 PM

Electropherogram Summary Continued ...



Setpoint Deviations for sample 8 : CMW #8 350bp Soni

Height Threshold [FU] : 40

Overall Results for sample 8 : CMW #8 350bp Soni

Number of peaks found: 12 Corr. Area 1: 1,961.9
 Noise: 0.2

Peak table for sample 8 : CMW #8 350bp Soni

Peak	Size [bp]	Conc. [pg/μl]	Molarity [pmol/l]	Observations
1	35	125.00	5,411.3	Lower Marker
2	43	3,361.42	118,486.5	
3	72	2,158.51	45,147.5	
4	829	54.89	100.3	
5	1,271	375.91	448.1	
6	1,663	281.70	256.6	
7	2,005	218.29	165.0	
8	2,383	190.26	121.0	
9	2,593	111.43	65.1	
10	2,816	120.91	65.0	
11	3,468	120.74	52.8	
12	4,974	334.07	101.8	
13	8,025	47.89	9.0	
14	10,380	75.00	10.9	Upper Marker

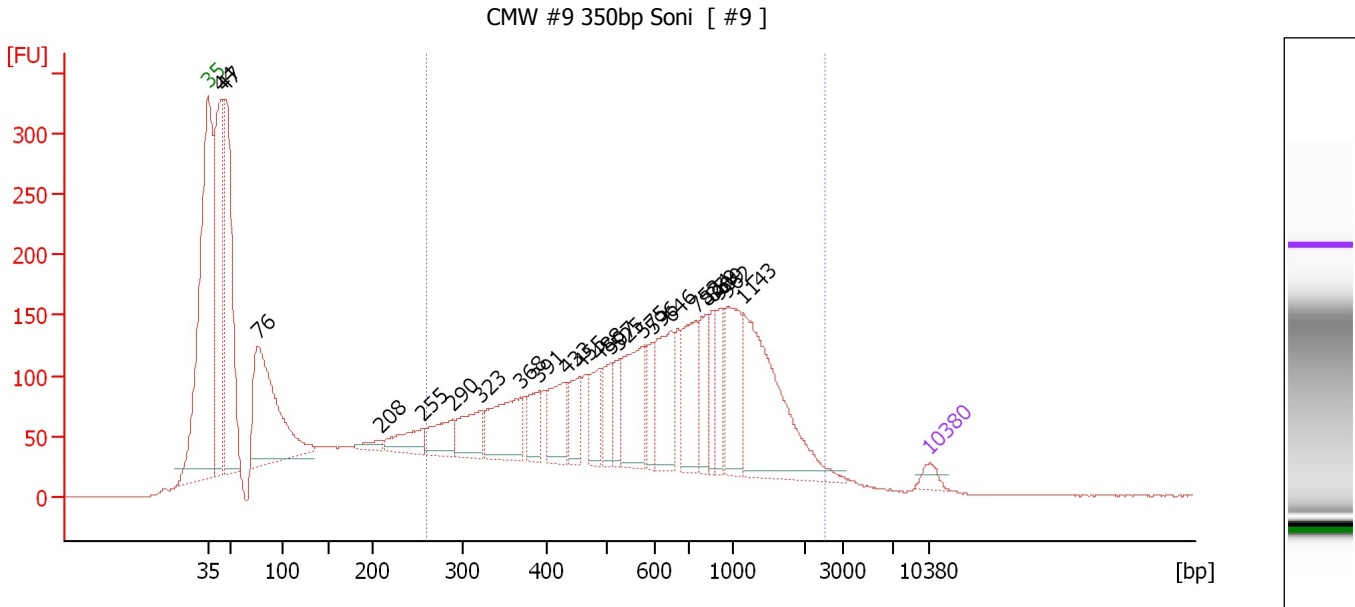
Region table for sample 8 : CMW #8 350bp Soni

From [bp]	Molarity [pmol/l]	Average Size [bp]	Conc. [pg/μl]	To [bp]	Corr. Area	% of Total	Size distribution in CV [%]	Color
591	2,748.7	2,625	2,798.29	8,067	1,961.9	36	70.1	Blue

Assay Class: High Sensitivity DNA Assay
 Data Path: C:\...ents and Settings\Bioanalyzer\2012-04-04\2012-04-04_003.xad

Created: 4/4/2012 11:17:29 AM
 Modified: 4/4/2012 12:01:09 PM

Electropherogram Summary Continued ...



Overall Results for sample 9 : CMW #9 350bp Soni

Number of peaks found: 23 Corr. Area 1: 4,403.9
 Noise: 0.2

Peak table for sample 9 : CMW #9 350bp Soni

Peak	Size [bp]	Conc. [pg/μl]	Molarity [pmol/l]	Observations
1	35	125.00	5,411.3	Lower Marker
2	44	2,767.68	96,051.0	
3	47	2,718.13	88,482.1	
4	76	2,330.94	46,306.6	
5	208	100.96	734.6	
6	255	326.19	1,934.4	
7	290	367.05	1,916.5	
8	323	444.62	2,088.4	
9	368	724.00	2,978.9	
10	391	329.02	1,274.7	
11	433	488.68	1,711.7	
12	455	316.46	1,052.7	
13	488	358.86	1,114.0	
14	507	283.78	847.9	
15	525	275.07	794.3	
16	575	737.71	1,942.9	
17	596	242.20	615.5	
18	646	683.29	1,601.7	
19	753	650.67	1,309.1	
20	824	380.77	700.3	
21	859	263.52	464.8	
22	909	301.90	503.4	
23	962	667.70	1,052.1	
24	1,143	1,501.91	1,990.2	
25	10,380	75.00	10.9	Upper Marker


Assay Class: High Sensitivity DNA Assay
Data Path: C:\...ents and Settings\Bioanalyzer\2012-04-04\2012-04-04_003.xad

Created: 4/4/2012 11:17:29 AM
Modified: 4/4/2012 12:01:09 PM

Electropherogram Summary Continued ...

... Region table for sample 9 :

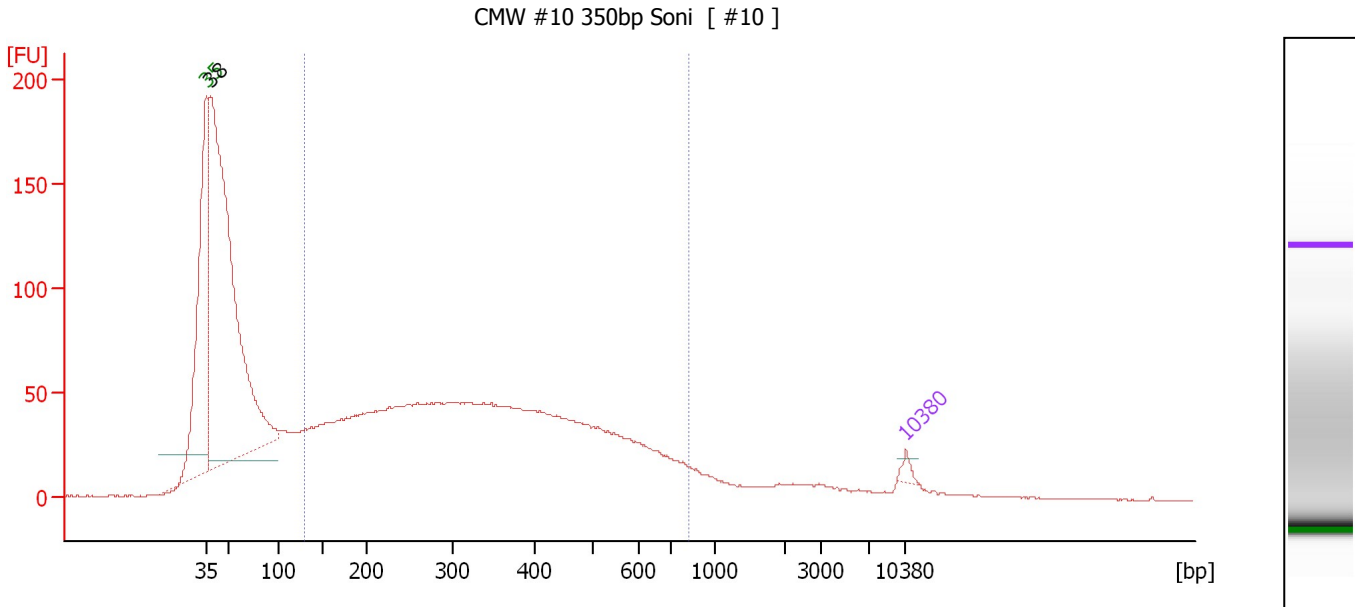
CMW #9 350bp Soni

From [bp]	Molarity [pmol/l]	Average Size [bp]	Conc. [pg/μl]	To [bp]	Corr. Area	% of Total	Size distribution in CV [%]	Co lor
259	39,374.9	742	13,304.51	2,521	4,403.9	59	59.3	

Assay Class: High Sensitivity DNA Assay
 Data Path: C:\...ents and Settings\Bioanalyzer\2012-04-04\2012-04-04_003.xad

Created: 4/4/2012 11:17:29 AM
 Modified: 4/4/2012 12:01:09 PM

Electropherogram Summary Continued ...



Overall Results for sample 10 : CMW #10 350bp Soni

Number of peaks found: 1 Corr. Area 1: 1,933.7
 Noise: 0.2

Peak table for sample 10 : CMW #10 350bp Soni

Peak	Size [bp]	Conc. [pg/μl]	Molarity [pmol/l]	Observations
1	35	125.00	5,411.3	Lower Marker
2	38	12,914.00	515,232.3	
3	10,380	75.00	10.9	Upper Marker

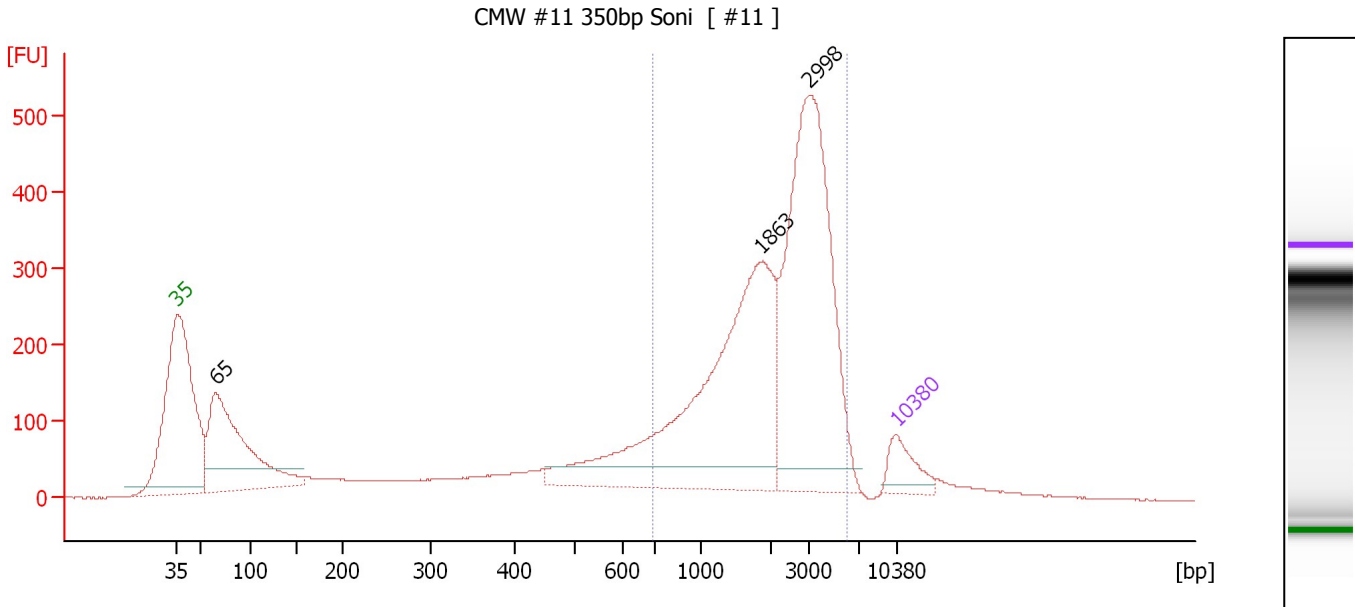
Region table for sample 10 : CMW #10 350bp Soni

From [bp]	Molarity [pmol/l]	Average Size [bp]	Conc. [pg/μl]	To [bp]	Corr. Area	% of Total	Size distribution in CV [%]	Color
129	103,651.4	353	18,320.13	819	1,933.7	55	42.0	Blue

Assay Class: High Sensitivity DNA Assay
 Data Path: C:\...ents and Settings\Bioanalyzer\2012-04-04\2012-04-04_003.xad

Created: 4/4/2012 11:17:29 AM
 Modified: 4/4/2012 12:01:09 PM

Electropherogram Summary Continued ...



Setpoint Deviations for sample 11 : CMW #11 350bp Soni

Height Threshold [FU] : 30

Overall Results for sample 11 : CMW #11 350bp Soni

Number of peaks found: 3 Corr. Area 1: 4,410.5
 Noise: 0.3

Peak table for sample 11 : CMW #11 350bp Soni

Peak	Size [bp]	Conc. [pg/μl]	Molarity [pmol/l]	Observations
1	35	125.00	5,411.3	Lower Marker
2	65	749.40	17,350.0	
3	1,863	953.16	775.3	
4	2,998	916.03	463.0	
5	10,380	75.00	10.9	Upper Marker

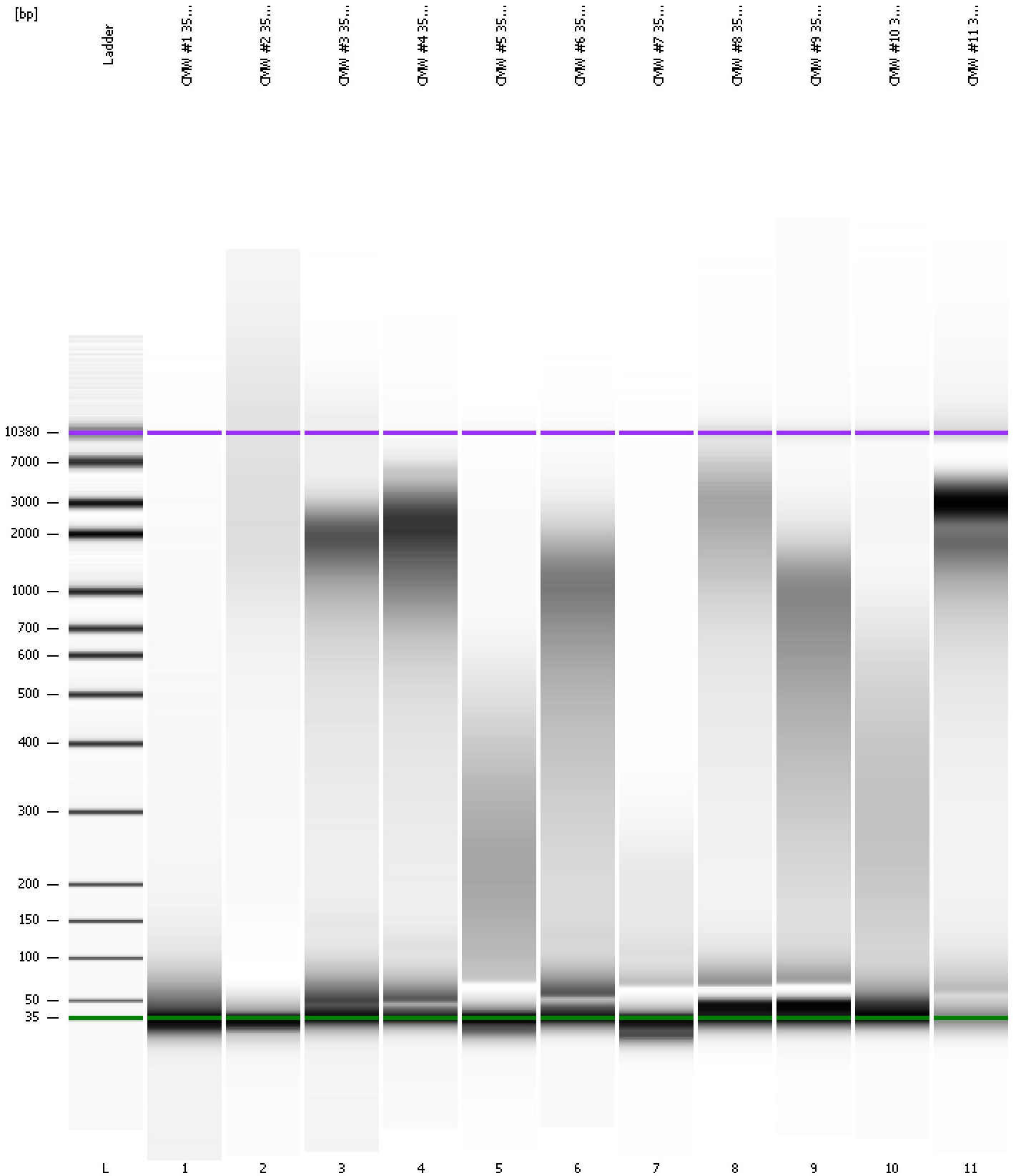
Region table for sample 11 : CMW #11 350bp Soni

From [bp]	Molarity [pmol/l]	Average Size [bp]	Conc. [pg/μl]	To [bp]	Corr. Area	% of Total	Size distribution in CV [%]	Color
690	1,545.0	2,473	1,880.80	6,069	4,410.5	62	49.8	Blue

Assay Class: High Sensitivity DNA Assay
Data Path: C:\...ents and Settings\Bioanalyzer\2012-04-04\2012-04-04_003.xad

Created: 4/4/2012 11:17:29 AM
Modified: 4/4/2012 12:01:09 PM

Gel Image



Assay Class: High Sensitivity DNA Assay
 Data Path: C:\...ents and Settings\Bioanalyzer\2012-04-04\2012-04-04_003.xad

Created: 4/4/2012 11:17:29 AM
 Modified: 4/4/2012 12:01:09 PM

Run Logbook

Description	Number	Source	Category	Sub Category	Time	Time Zone	User	Host
Run ended on port 1 (Number of wells acquired: 12)		Instrument	Run		4/4/2012 11:58:44 AM	(GMT --07:00) Pacific Standard Time	UC Davis	D8XSMGH1
Run started on port 1 (File: C:\Documents and Settings\Bioanalyzer\2012-04-04\2012-04-04_003.xad)		Instrument	Run		4/4/2012 11:17:30 AM	(GMT --07:00) Pacific Standard Time	UC Davis	D8XSMGH1
Product Number : G2938B		Instrument	Run		4/4/2012 11:17:30 AM	(GMT --07:00) Pacific Standard Time	UC Davis	D8XSMGH1
Name :		Instrument	Run		4/4/2012 11:17:30 AM	(GMT --07:00) Pacific Standard Time	UC Davis	D8XSMGH1
Vendor : Agilent Technologies		Instrument	Run		4/4/2012 11:17:30 AM	(GMT --07:00) Pacific Standard Time	UC Davis	D8XSMGH1
Serial# : DE13701086		Instrument	Run		4/4/2012 11:17:30 AM	(GMT --07:00) Pacific Standard Time	UC Davis	D8XSMGH1
Firmware : C.01.069		Instrument	Run		4/4/2012 11:17:30 AM	(GMT --07:00) Pacific Standard Time	UC Davis	D8XSMGH1
Cartridge : Electrode		Instrument	Run		4/4/2012 11:17:30 AM	(GMT --07:00) Pacific Standard Time	UC Davis	D8XSMGH1