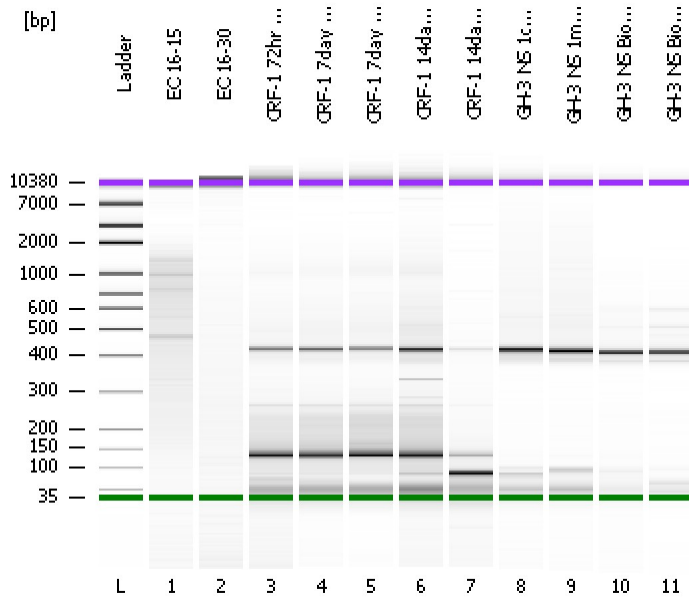


Assay Class: High Sensitivity DNA Assay
Data Path: C:\...ents and Settings\Bioanalyzer\2012-04-04\2012-04-04_005.xad

Created: 4/4/2012 4:09:23 PM
Modified: 4/4/2012 4:52:30 PM

Electrophoresis File Run Summary



Instrument Information:

Instrument Name: DE13701086 Firmware: C.01.069
Serial#: DE13701086 Type: G2938B

Assay Information:

Assay Origin Path: C:\Program Files\Agilent\2100 bioanalyzer\2100 expert\assays\dsDNA\High Sensitivity DNA.xsy
Assay Class: High Sensitivity DNA Assay
Version: 1.03
Assay Comments: Copyright © 2003-2010 Agilent Technologies

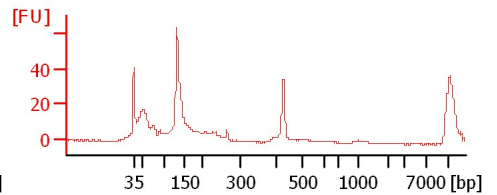
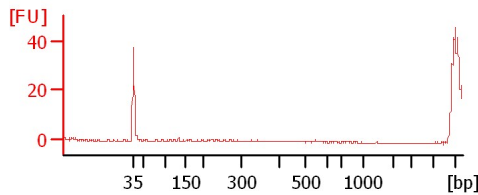
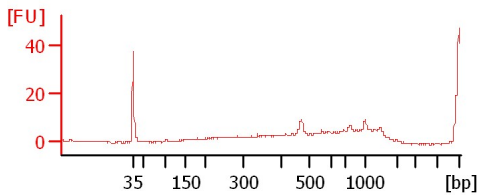
Chip Information:

Chip Lot #:
Reagent Kit Lot #:
Chip Comments:

EC 16-15

EC 16-30

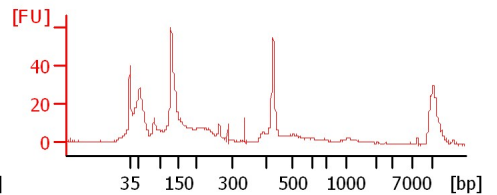
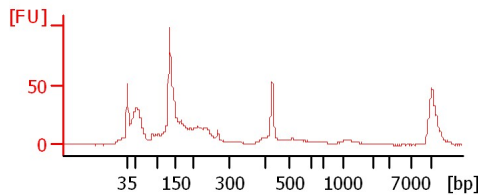
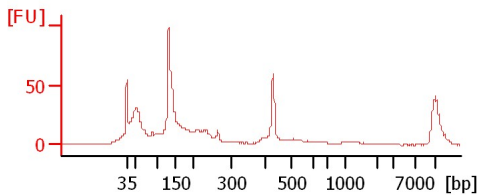
CRF-1 72hr med exp



CRF-1 7day med cont

CRF-1 7day med exp

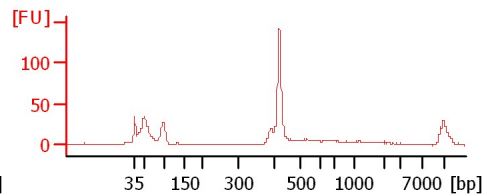
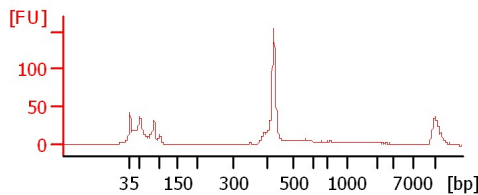
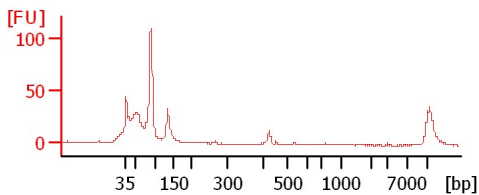
CRF-1 14day med cont



CRF-1 14day med exp

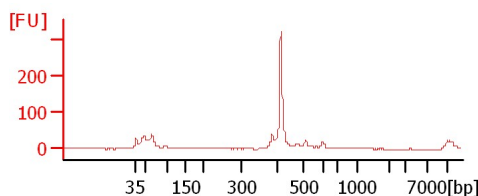
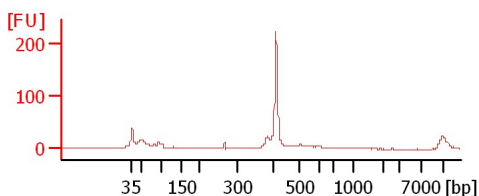
GH-3 NS 1cm T1

GH-3 NS 1mm T3



GH-3 NS Biofilm T5

GH-3 NS Biofilm T6



Assay Class: High Sensitivity DNA Assay
 Data Path: C:\...ents and Settings\Bioanalyzer\2012-04-04\2012-04-04_005.xad

Created: 4/4/2012 4:09:23 PM
 Modified: 4/4/2012 4:52:30 PM

Electrophoresis File Run Summary (Chip Summary)

Sample Name	Sample Comment	Rest. Digest	Status	Observation	Result Label	Result Color
EC 16-15		<input type="checkbox"/>	✓			
EC 16-30		<input type="checkbox"/>	✓			
CRF-1 72hr med exp		<input type="checkbox"/>	✓			
CRF-1 7day med cont		<input type="checkbox"/>	✓			
CRF-1 7day med exp		<input type="checkbox"/>	✓			
CRF-1 14day med cont		<input type="checkbox"/>	✓			
CRF-1 14day med exp		<input type="checkbox"/>	✓			
GH-3 NS 1cm T1		<input type="checkbox"/>	✓			
GH-3 NS 1mm T3		<input type="checkbox"/>	✓			
GH-3 NS Biofilm T5		<input type="checkbox"/>	✓			
GH-3 NS Biofilm2 T6		<input type="checkbox"/>	✓			
Ladder		<input type="checkbox"/>	✓			

Chip Lot #

Reagent Kit Lot #

Chip Comments :

Assay Class: High Sensitivity DNA Assay
Data Path: C:\...ents and Settings\Bioanalyzer\2012-04-04\2012-04-04_005.xad

Created: 4/4/2012 4:09:23 PM
Modified: 4/4/2012 4:52:30 PM

Electrophoresis Assay Details

General Analysis Settings

Number of Available Sample and Ladder Wells (Max.) : 12
Minimum Visible Range [s] : 32
Maximum Visible Range [s] : 138
Start Analysis Time Range [s] : 33
End Analysis Time Range [s] : 137.5
Ladder Concentration [pg/μl] : 1950
Uses Standard Area for Ladder Fragments
Lower Marker Concentration [pg/μl] : 125
Upper Marker Concentration [pg/μl] : 75
Used Upper Marker for Quantitation
Standard Curve Fit is Point to Point
Show Data Aligned to Lower and Upper Marker

Integrator Settings

Integration Start Time [s] : 33.05
Integration End Time [s] : 137
Slope Threshold : 0.8
Height Threshold [FU] : 5
Area Threshold : 0.1
Width Threshold [s] : 0.6
Baseline Plateau [s] : 0.5

Filter Settings

Filter Width [s] : 0.5
Polynomial Order : 4

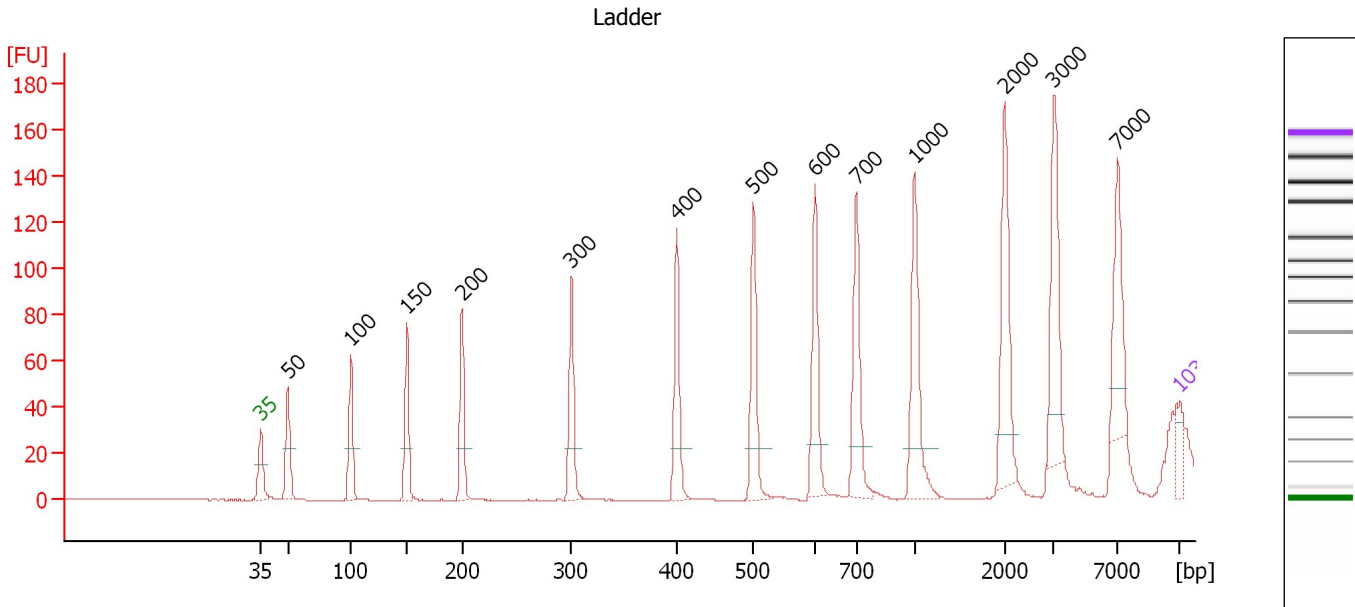
Ladder

Ladder Peak	Size	Area
1	35	160
2	50	210
3	100	208
4	150	221
5	200	242
6	300	270
7	400	305
8	500	306
9	600	336
10	700	321
11	1000	366
12	2000	413
13	3000	411
14	7000	400
15	10380	214

Assay Class: High Sensitivity DNA Assay
 Data Path: C:\...ents and Settings\Bioanalyzer\2012-04-04\2012-04-04_005.xad

Created: 4/4/2012 4:09:23 PM
 Modified: 4/4/2012 4:52:30 PM

Electropherogram Summary



Overall Results for Ladder

Noise: 0.1

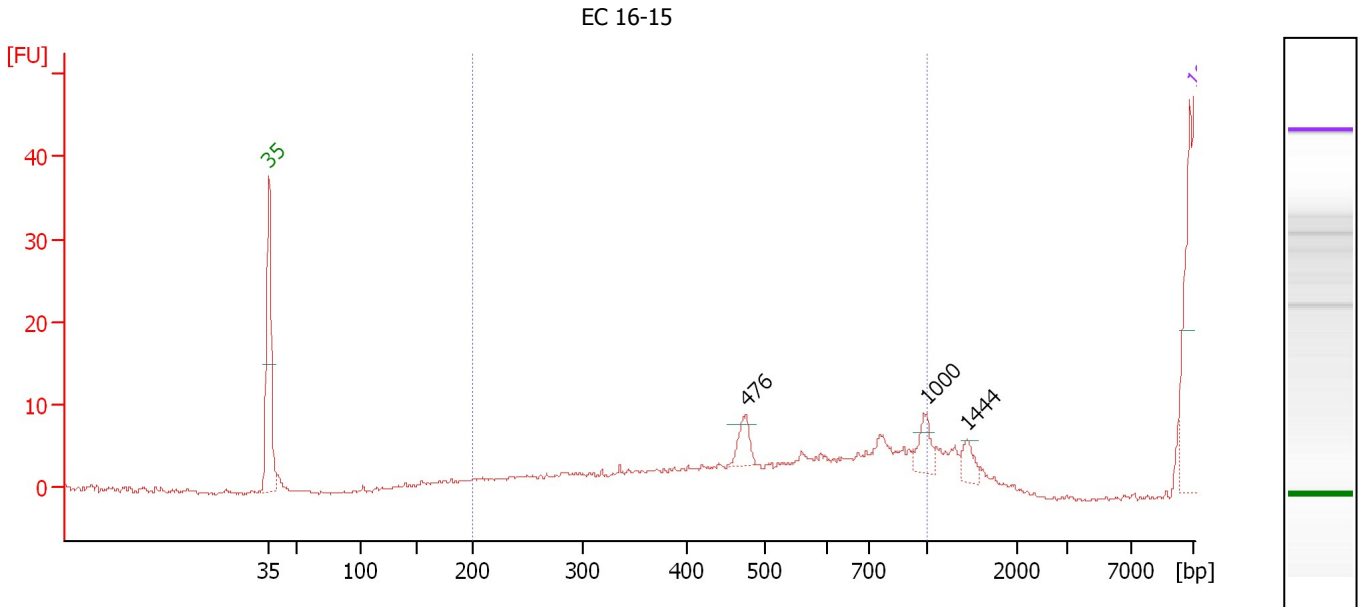
Peak table for Ladder

Peak	Size [bp]	Conc. [pg/μl]	Molarity [pmol/l]	Observations
1	35	125.00	5,411.3	Lower Marker
2	50	150.00	4,545.5	Ladder Peak
3	100	150.00	2,272.7	Ladder Peak
4	150	150.00	1,515.2	Ladder Peak
5	200	150.00	1,136.4	Ladder Peak
6	300	150.00	757.6	Ladder Peak
7	400	150.00	568.2	Ladder Peak
8	500	150.00	454.5	Ladder Peak
9	600	150.00	378.8	Ladder Peak
10	700	150.00	324.7	Ladder Peak
11	1,000	150.00	227.3	Ladder Peak
12	2,000	150.00	113.6	Ladder Peak
13	3,000	150.00	75.8	Ladder Peak
14	7,000	150.00	32.5	Ladder Peak
15	10,380	75.00	10.9	Upper Marker

Assay Class: High Sensitivity DNA Assay
 Data Path: C:\...ents and Settings\Bioanalyzer\2012-04-04\2012-04-04_005.xad

Created: 4/4/2012 4:09:23 PM
 Modified: 4/4/2012 4:52:30 PM

Electropherogram Summary Continued ...



Overall Results for sample 1 : EC 16-15

Number of peaks found: 3 Corr. Area 1: 0.0
 Noise: 0.2

Peak table for sample 1 : EC 16-15

Peak	Size [bp]	Conc. [pg/μl]	Molarity [pmol/l]	Observations
1	35	125.00	5,411.3	Lower Marker
2	476	16.21	51.6	
3	1,000	14.93	22.6	
4	1,444	9.41	9.9	
5	10,380	75.00	10.9	Upper Marker

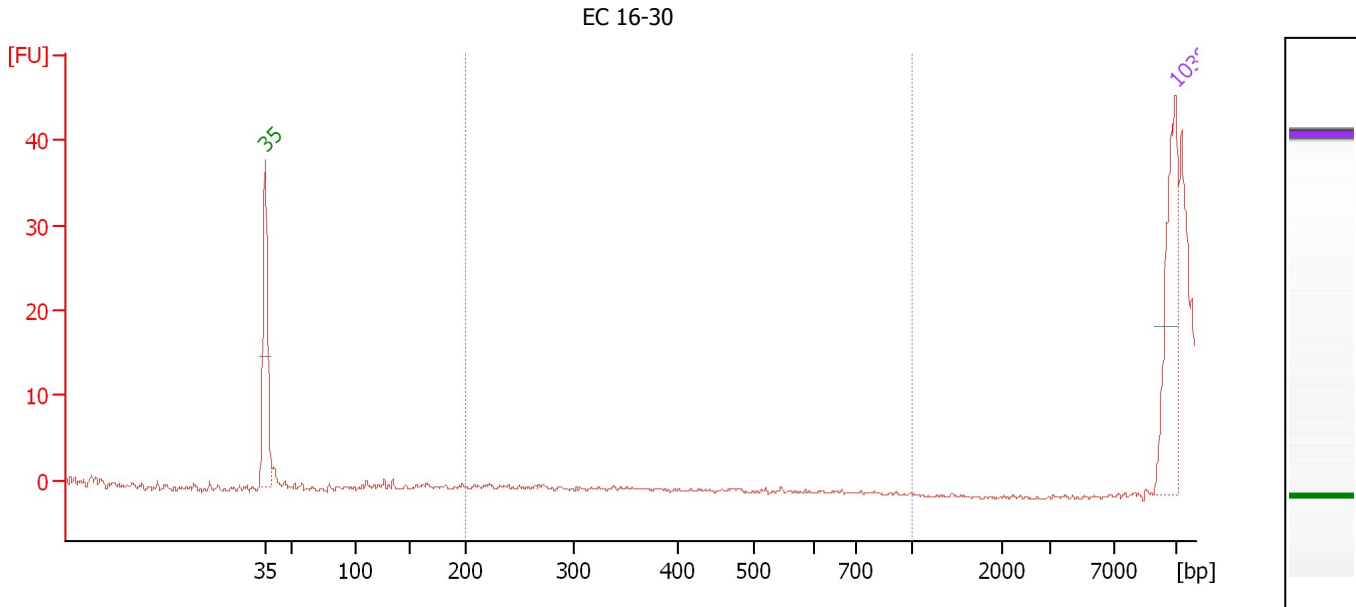
Region table for sample 1 : EC 16-15

From [bp]	Molarity [pmol/l]	Average Size [bp]	Conc. [pg/μl]	To [bp]	Corr. Area	% of Total	Size distribution in CV [%]	Color
200	0.0	0	0.00	1,000	0.0	0	0.0	Blue

Assay Class: High Sensitivity DNA Assay
 Data Path: C:\...ents and Settings\Bioanalyzer\2012-04-04\2012-04-04_005.xad

Created: 4/4/2012 4:09:23 PM
 Modified: 4/4/2012 4:52:30 PM

Electropherogram Summary Continued ...



Overall Results for sample 2 : EC 16-30

Number of peaks found: 0 Corr. Area 1: 0.0
 Noise: 0.2

Peak table for sample 2 : EC 16-30

Peak	Size [bp]	Conc. [pg/μl]	Molarity [pmol/l]	Observations
1	35	125.00	5,411.3	Lower Marker
2	10,380	75.00	10.9	Upper Marker

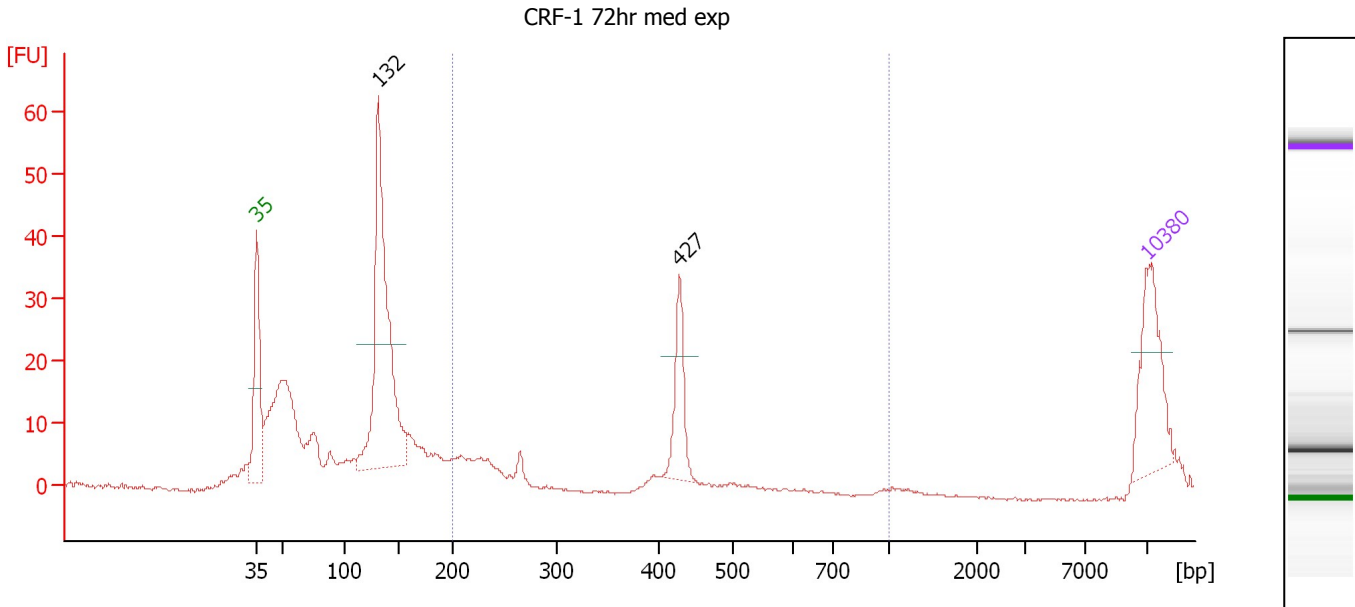
Region table for sample 2 : EC 16-30

From [bp]	Molarity [pmol/l]	Average Size [bp]	Conc. [pg/μl]	To [bp]	Corr. Area	% of Total	Size distribution in CV [%]	Color
200	0.0	0	0.00	1,000	0.0	0	0.0	Blue

Assay Class: High Sensitivity DNA Assay
 Data Path: C:\...ents and Settings\Bioanalyzer\2012-04-04\2012-04-04_005.xad

Created: 4/4/2012 4:09:23 PM
 Modified: 4/4/2012 4:52:30 PM

Electropherogram Summary Continued ...



Setpoint Deviations for sample 3 : CRF-1 72hr med exp

Height Threshold [FU] : 20

Overall Results for sample 3 : CRF-1 72hr med exp

Number of peaks found: 2 Corr. Area 1: 76.3
 Noise: 0.2

Peak table for sample 3 : CRF-1 72hr med exp

Peak	Size [bp]	Conc. [pg/μl]	Molarity [pmol/l]	Observations
1	35	125.00	5,411.3	Lower Marker
2	132	360.40	4,145.0	
3	427	67.16	238.4	
4	10,380	75.00	10.9	Upper Marker

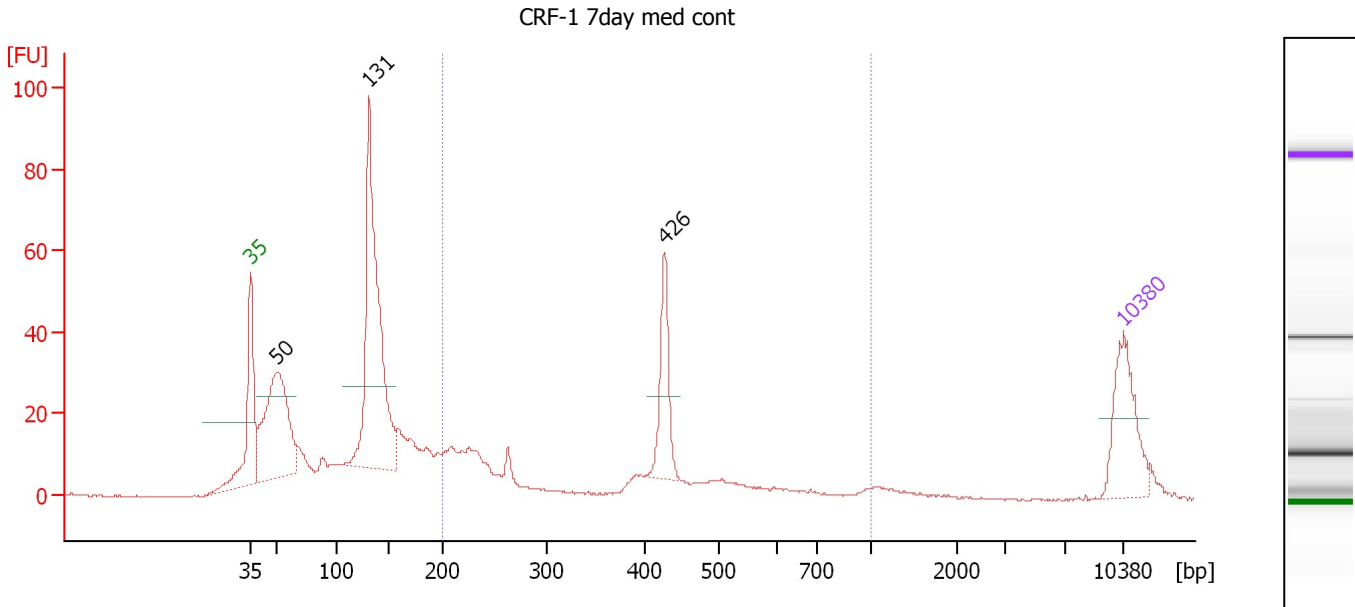
Region table for sample 3 : CRF-1 72hr med exp

From [bp]	Molarity [pmol/l]	Average Size [bp]	Conc. [pg/μl]	To [bp]	Corr. Area	% of Total	Size distribution in CV [%]	Color
200	816.5	348	160.90	1,000	76.3	18	27.9	Blue

Assay Class: High Sensitivity DNA Assay
 Data Path: C:\...ents and Settings\Bioanalyzer\2012-04-04\2012-04-04_005.xad

Created: 4/4/2012 4:09:23 PM
 Modified: 4/4/2012 4:52:30 PM

Electropherogram Summary Continued ...



Setpoint Deviations for sample 4 : CRF-1 7day med cont

Height Threshold [FU] : 20

Overall Results for sample 4 : CRF-1 7day med cont

Number of peaks found: 3 Corr. Area 1: 242.1
 Noise: 0.2

Peak table for sample 4 : CRF-1 7day med cont

Peak	Size [bp]	Conc. [pg/μl]	Molarity [pmol/l]	Observations
1	35	125.00	5,411.3	Lower Marker
2	50	276.78	8,346.8	
3	131	420.50	4,871.4	
4	426	85.07	302.9	
5	10,380	75.00	10.9	Upper Marker

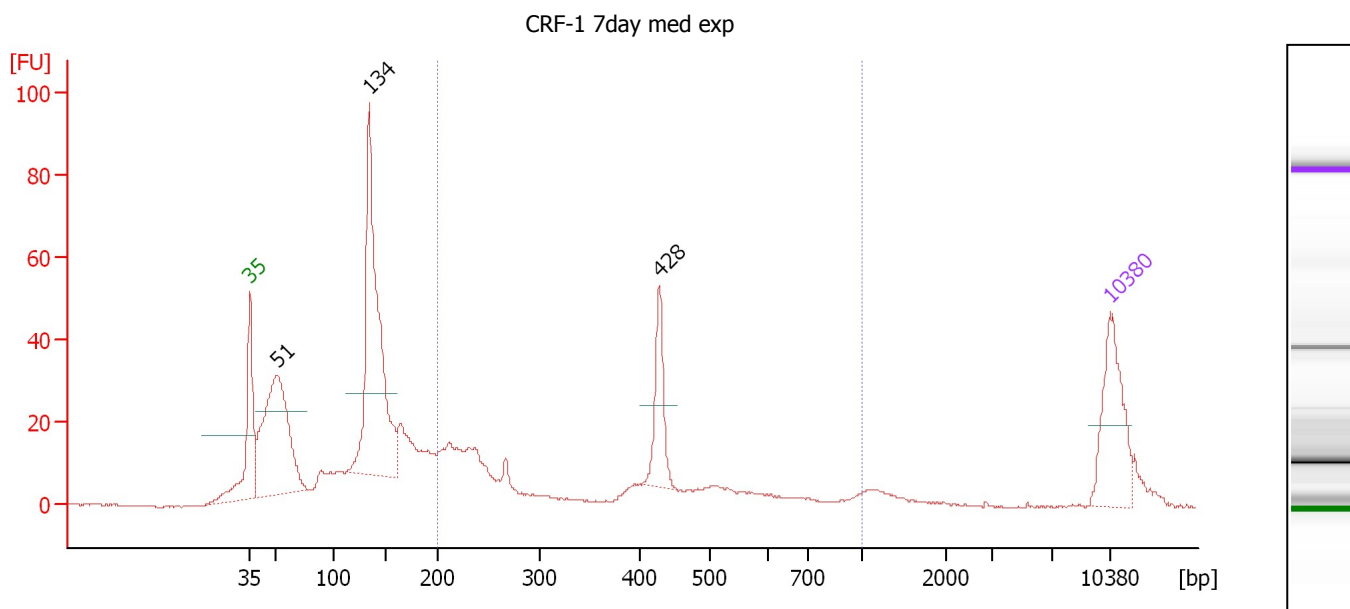
Region table for sample 4 : CRF-1 7day med cont

From [bp]	Molarity [pmol/l]	Average Size [bp]	Conc. [pg/μl]	To [bp]	Corr. Area	% of Total	Size distribution in CV [%]	Color
200	1,845.7	387	384.38	1,000	242.1	29	38.1	Blue

Assay Class: High Sensitivity DNA Assay
 Data Path: C:\...ents and Settings\Bioanalyzer\2012-04-04\2012-04-04_005.xad

Created: 4/4/2012 4:09:23 PM
 Modified: 4/4/2012 4:52:30 PM

Electropherogram Summary Continued ...



Setpoint Deviations for sample 5 : CRF-1 7day med exp

Height Threshold [FU] : 20

Overall Results for sample 5 : CRF-1 7day med exp

Number of peaks found: 3 Corr. Area 1: 257.5
 Noise: 0.2

Peak table for sample 5 : CRF-1 7day med exp

Peak	Size [bp]	Conc. [pg/µl]	Molarity [pmol/l]	Observations
1	35	125.00	5,411.3	Lower Marker
2	51	301.47	8,871.5	
3	134	384.83	4,366.7	
4	428	68.82	243.4	
5	10,380	75.00	10.9	Upper Marker

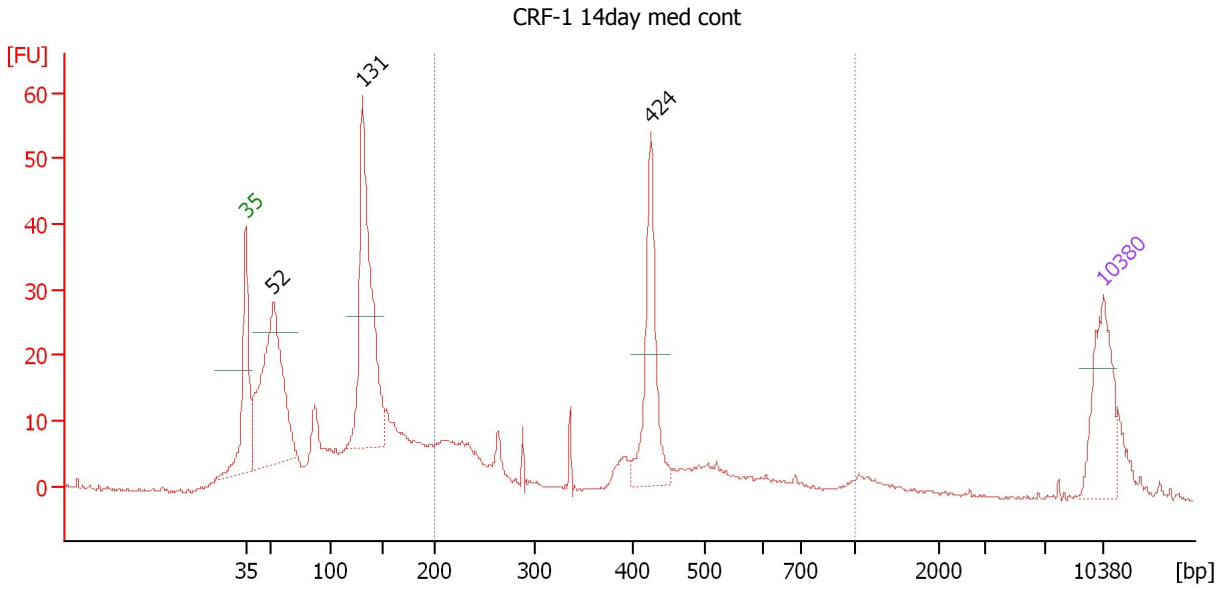
Region table for sample 5 : CRF-1 7day med exp

From [bp]	Molarity [pmol/l]	Average Size [bp]	Conc. [pg/µl]	To [bp]	Corr. Area	% of Total	Size distribution in CV [%]	Color
200	1,885.8	379	380.66	1,000	257.5	30	40.4	Blue

Assay Class: High Sensitivity DNA Assay
 Data Path: C:\...ents and Settings\Bioanalyzer\2012-04-04\2012-04-04_005.xad

Created: 4/4/2012 4:09:23 PM
 Modified: 4/4/2012 4:52:30 PM

Electropherogram Summary Continued ...



Setpoint Deviations for sample 6 : CRF-1 14day med cont

Height Threshold [FU] : 20

Overall Results for sample 6 : CRF-1 14day med cont

Number of peaks found: 3 Corr. Area 1: 202.1
 Noise: 0.2

Peak table for sample 6 : CRF-1 14day med cont

Peak	Size [bp]	Conc. [pg/μl]	Molarity [pmol/l]	Observations
1	35	125.00	5,411.3	Lower Marker
2	52	340.11	9,907.5	
3	131	336.47	3,881.8	
4	424	145.54	519.9	
5	10,380	75.00	10.9	Upper Marker

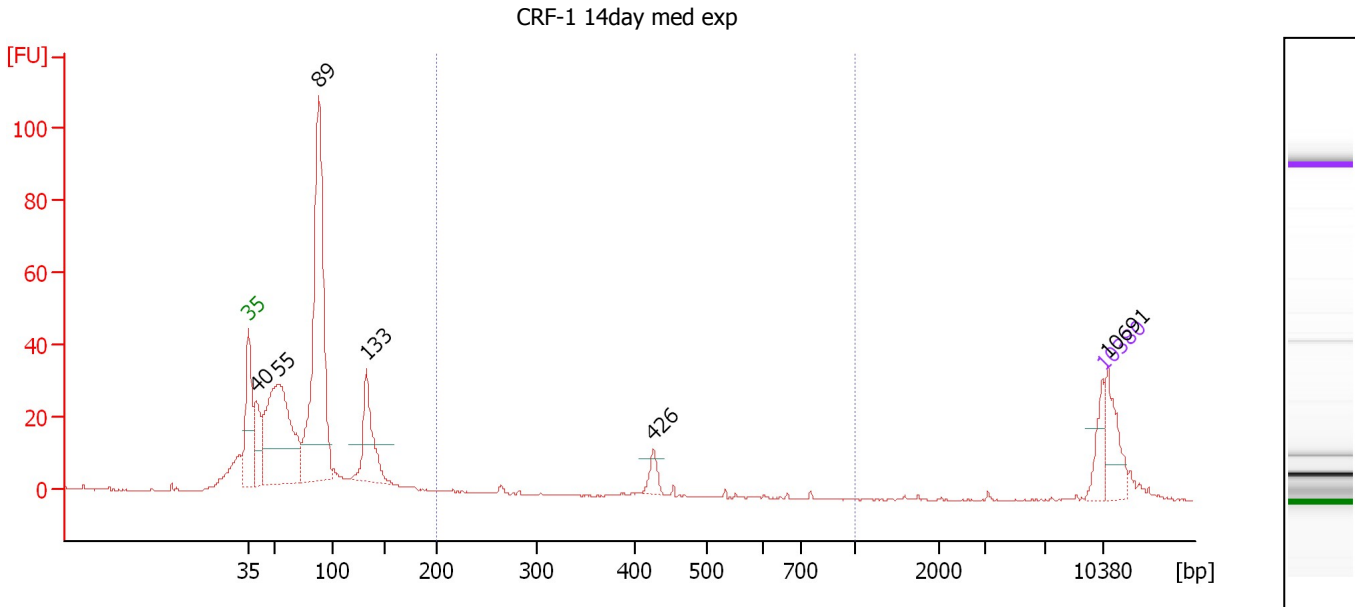
Region table for sample 6 : CRF-1 14day med cont

From [bp]	Molarity [pmol/l]	Average Size [bp]	Conc. [pg/μl]	To [bp]	Corr. Area	% of Total	Size distribution in CV [%]	Color
200	2,079.5	406	460.33	1,000	202.1	32	35.8	Blue

Assay Class: High Sensitivity DNA Assay
 Data Path: C:\...ents and Settings\Bioanalyzer\2012-04-04\2012-04-04_005.xad

Created: 4/4/2012 4:09:23 PM
 Modified: 4/4/2012 4:52:30 PM

Electropherogram Summary Continued ...



Setpoint Deviations for sample 7 : CRF-1 14day med exp

Height Threshold [FU] : 10

Overall Results for sample 7 : CRF-1 14day med exp

Number of peaks found: 6 Corr. Area 1: 19.6
 Noise: 0.2

Peak table for sample 7 : CRF-1 14day med exp

Peak	Size [bp]	Conc. [pg/μl]	Molarity [pmol/l]	Observations
1	35	125.00	5,411.3	Lower Marker
2	40	235.88	8,991.7	
3	55	992.87	27,432.7	
4	89	1,477.03	25,264.0	
5	133	347.59	3,966.5	
6	426	56.20	200.1	
7	10,380	75.00	10.9	Upper Marker
8	10,691	0.00	0.0	

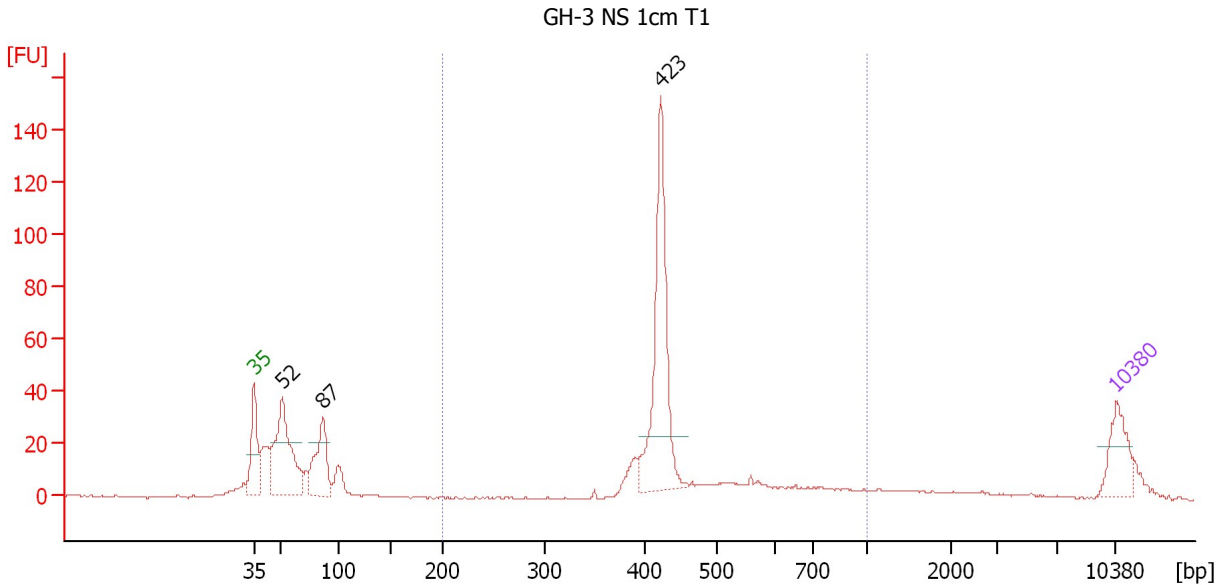
Region table for sample 7 : CRF-1 14day med exp

From [bp]	Molarity [pmol/l]	Average Size [bp]	Conc. [pg/μl]	To [bp]	Corr. Area	% of Total	Size distribution in CV [%]	Color
200	405.1	401	95.87	1,000	19.6	3	23.2	Blue

Assay Class: High Sensitivity DNA Assay
 Data Path: C:\...ents and Settings\Bioanalyzer\2012-04-04\2012-04-04_005.xad

Created: 4/4/2012 4:09:23 PM
 Modified: 4/4/2012 4:52:30 PM

Electropherogram Summary Continued ...



Setpoint Deviations for sample 8 : GH-3 NS 1cm T1

Height Threshold [FU] : 20

Overall Results for sample 8 : GH-3 NS 1cm T1

Number of peaks found: 3 Corr. Area 1: 320.4
 Noise: 0.2

Peak table for sample 8 : GH-3 NS 1cm T1

Peak	Size [bp]	Conc. [pg/μl]	Molarity [pmol/l]	Observations
1	35	125.00	5,411.3	Lower Marker
2	52	351.28	10,167.2	
3	87	187.00	3,267.9	
4	423	424.55	1,521.2	
5	10,380	75.00	10.9	Upper Marker

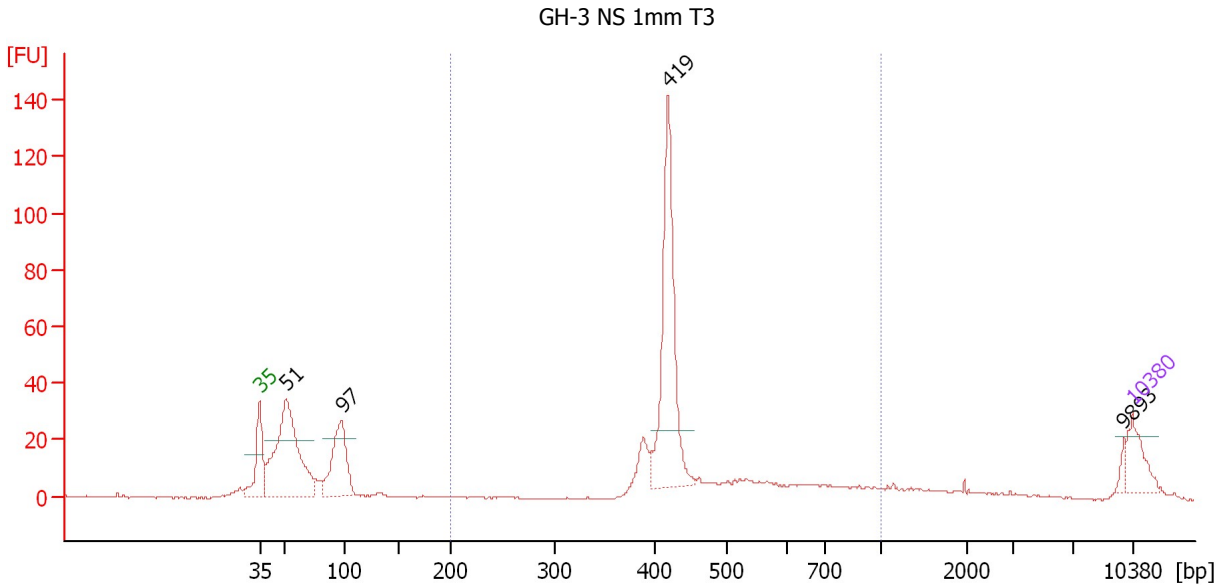
Region table for sample 8 : GH-3 NS 1cm T1

From [bp]	Molarity [pmol/l]	Average Size [bp]	Conc. [pg/μl]	To [bp]	Corr. Area	% of Total	Size distribution in CV [%]	Color
200	2,157.6	469	636.21	1,000	320.4	51	23.7	Blue

Assay Class: High Sensitivity DNA Assay
 Data Path: C:\...ents and Settings\Bioanalyzer\2012-04-04\2012-04-04_005.xad

Created: 4/4/2012 4:09:23 PM
 Modified: 4/4/2012 4:52:30 PM

Electropherogram Summary Continued ...



Setpoint Deviations for sample 9 : GH-3 NS 1mm T3

Height Threshold [FU] : 20

Overall Results for sample 9 : GH-3 NS 1mm T3

Number of peaks found: 4 Corr. Area 1: 336.1
 Noise: 0.3

Peak table for sample 9 : GH-3 NS 1mm T3

Peak	Size [bp]	Conc. [pg/μl]	Molarity [pmol/l]	Observations
1	35	125.00	5,411.3	Lower Marker
2	51	704.20	21,043.7	
3	97	322.47	5,031.3	
4	419	588.32	2,129.7	
5	9,893	17.47	2.7	
6	10,380	75.00	10.9	Upper Marker

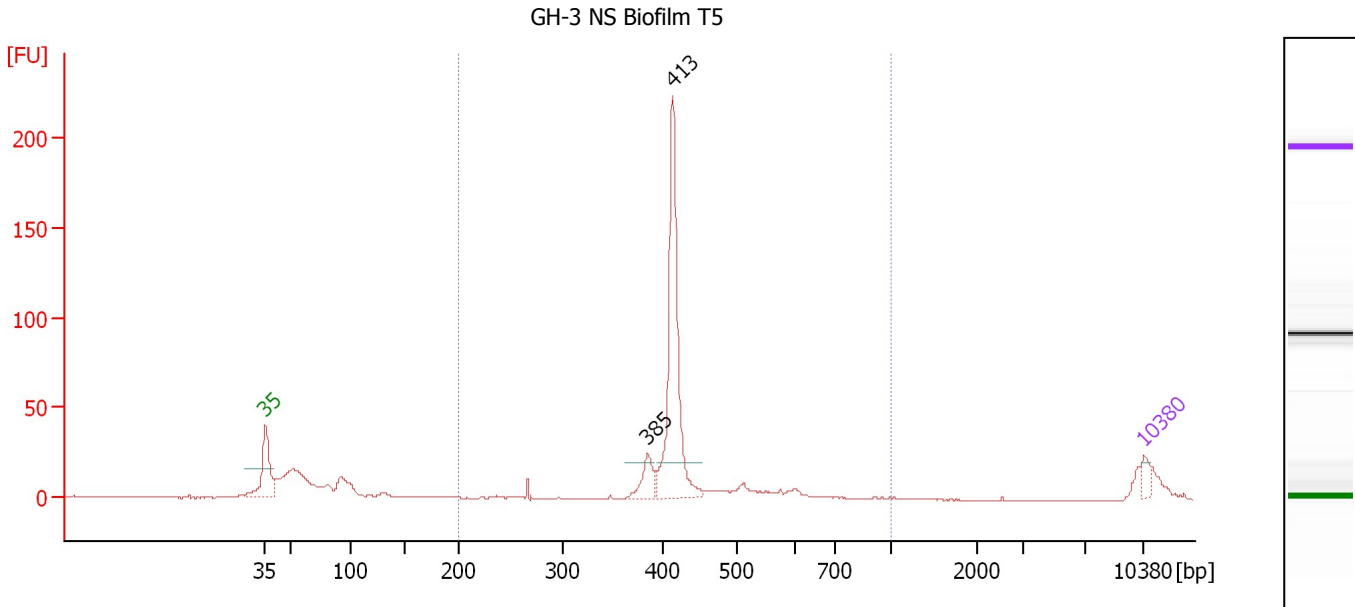
Region table for sample 9 : GH-3 NS 1mm T3

From [bp]	Molarity [pmol/l]	Average Size [bp]	Conc. [pg/μl]	To [bp]	Corr. Area	% of Total	Size distribution in CV [%]	Color
200	3,445.3	475	1,016.11	1,000	336.1	52	26.0	Blue

Assay Class: High Sensitivity DNA Assay
 Data Path: C:\...ents and Settings\Bioanalyzer\2012-04-04\2012-04-04_005.xad

Created: 4/4/2012 4:09:23 PM
 Modified: 4/4/2012 4:52:30 PM

Electropherogram Summary Continued ...



Setpoint Deviations for sample 10 : GH-3 NS Biofilm T5

Height Threshold [FU] : 20

Overall Results for sample 10 : GH-3 NS Biofilm T5

Number of peaks found: 2 Corr. Area 1: 323.1
 Noise: 0.3

Peak table for sample 10 : GH-3 NS Biofilm T5

Peak	Size [bp]	Conc. [pg/μl]	Molarity [pmol/l]	Observations
1	35	125.00	5,411.3	Lower Marker
2	385	248.35	977.9	
3	413	1,761.25	6,455.8	
4	10,380	75.00	10.9	Upper Marker

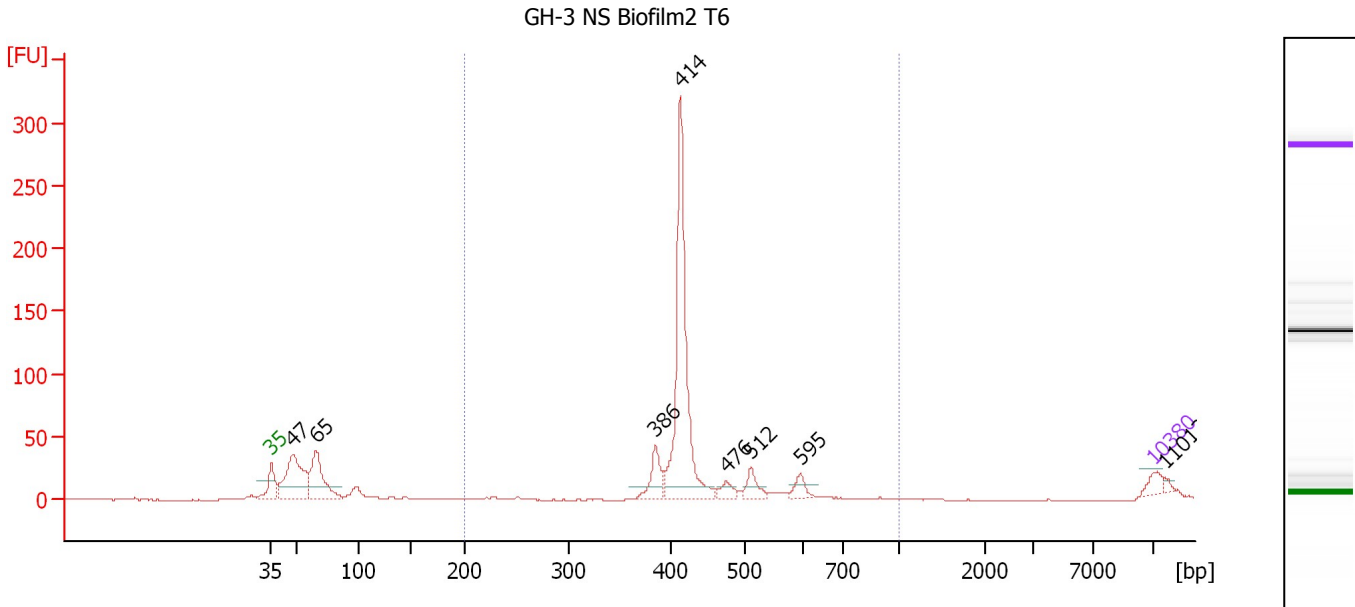
Region table for sample 10 : GH-3 NS Biofilm T5

From [bp]	Molarity [pmol/l]	Average Size [bp]	Conc. [pg/μl]	To [bp]	Corr. Area	% of Total	Size distribution in CV [%]	Color
200	8,199.2	425	2,269.21	1,000	323.1	68	11.3	Blue

Assay Class: High Sensitivity DNA Assay
 Data Path: C:\...ents and Settings\Bioanalyzer\2012-04-04\2012-04-04_005.xad

Created: 4/4/2012 4:09:23 PM
 Modified: 4/4/2012 4:52:30 PM

Electropherogram Summary Continued ...



Setpoint Deviations for sample 11 : GH-3 NS Biofilm2 T6

Height Threshold [FU] : 10

Overall Results for sample 11 : GH-3 NS Biofilm2 T6

Number of peaks found: 8 Corr. Area 1: 492.3
 Noise: 0.1

Peak table for sample 11 : GH-3 NS Biofilm2 T6

Peak	Size [bp]	Conc. [pg/μl]	Molarity [pmol/l]	Observations
1	35	125.00	5,411.3	Lower Marker
2	47	970.65	31,117.1	
3	65	706.89	16,354.4	
4	386	286.32	1,125.2	
5	414	1,935.23	7,090.8	
6	476	105.74	336.7	
7	512	147.71	437.0	
8	595	106.28	270.7	
9	10,380	75.00	10.9	Upper Marker
10	11,012	0.00	0.0	

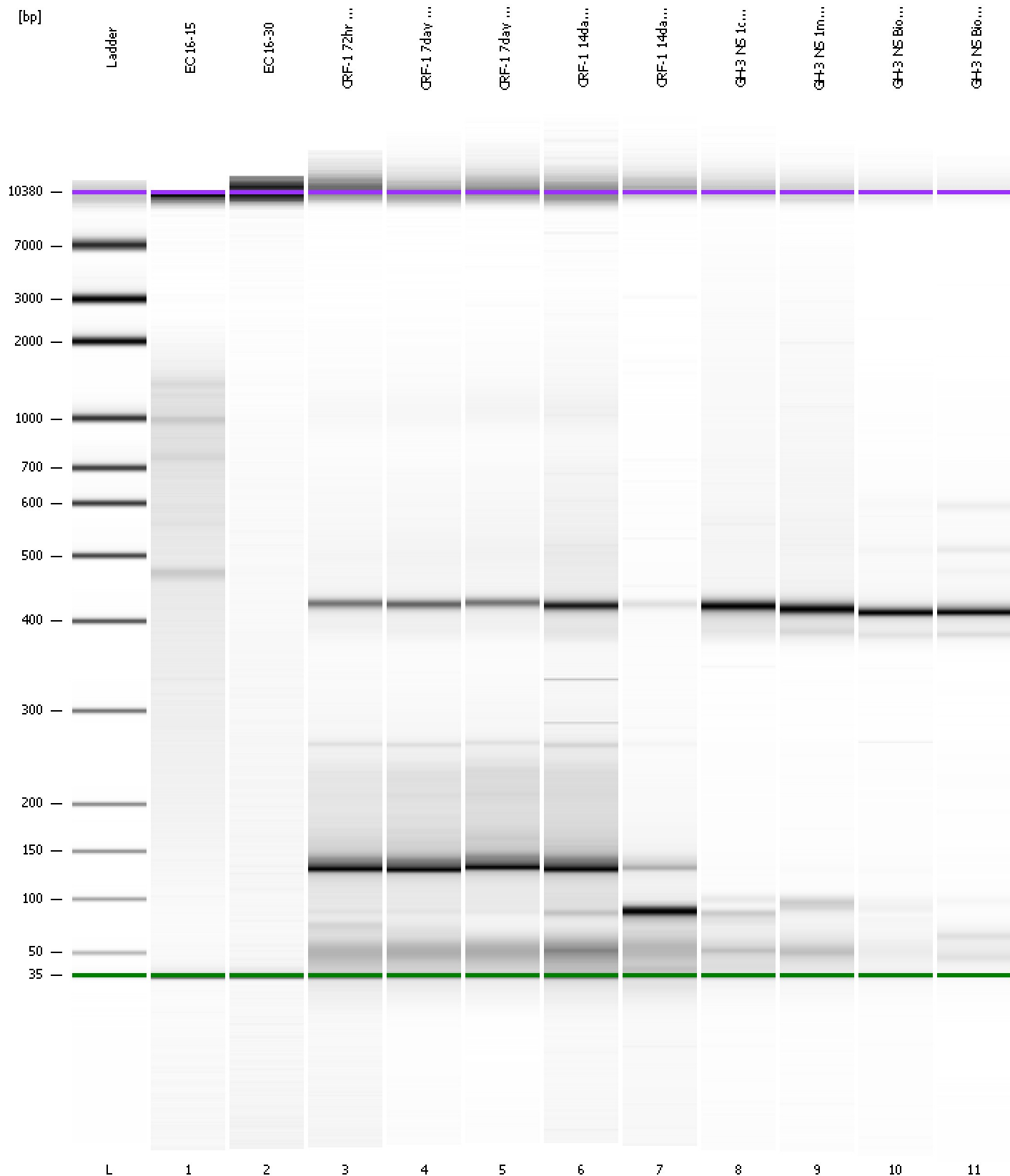
Region table for sample 11 : GH-3 NS Biofilm2 T6

From [bp]	Molarity [pmol/l]	Average Size [bp]	Conc. [pg/μl]	To [bp]	Corr. Area	% of Total	Size distribution in CV [%]	Color
200	9,120.2	433	2,566.38	1,000	492.3	66	11.7	Blue

Assay Class: High Sensitivity DNA Assay
Data Path: C:\...ents and Settings\Bioanalyzer\2012-04-04\2012-04-04_005.xad

Created: 4/4/2012 4:09:23 PM
Modified: 4/4/2012 4:52:30 PM

Gel Image



Assay Class: High Sensitivity DNA Assay
 Data Path: C:\...ents and Settings\Bioanalyzer\2012-04-04\2012-04-04_005.xad

Created: 4/4/2012 4:09:23 PM
 Modified: 4/4/2012 4:52:30 PM

Run Logbook

Description	Number	Source	Category	Sub Category	Time	Time Zone	User	Host
Run ended on port 1 (Number of wells acquired: 12)		Instrument	Run		4/4/2012 4:50:41 PM	(GMT --07:00) Pacific Standard Time	UC Davis	D8XSMGH1
Run started on port 1 (File: C:\Documents and Settings\Bioanalyzer\2012-04-04\2012-04-04_005.xad)		Instrument	Run		4/4/2012 4:09:28 PM	(GMT --07:00) Pacific Standard Time	UC Davis	D8XSMGH1
Product Number : G2938B		Instrument	Run		4/4/2012 4:09:28 PM	(GMT --07:00) Pacific Standard Time	UC Davis	D8XSMGH1
Name :		Instrument	Run		4/4/2012 4:09:28 PM	(GMT --07:00) Pacific Standard Time	UC Davis	D8XSMGH1
Vendor : Agilent Technologies		Instrument	Run		4/4/2012 4:09:28 PM	(GMT --07:00) Pacific Standard Time	UC Davis	D8XSMGH1
Serial# : DE13701086		Instrument	Run		4/4/2012 4:09:28 PM	(GMT --07:00) Pacific Standard Time	UC Davis	D8XSMGH1
Firmware : C.01.069		Instrument	Run		4/4/2012 4:09:28 PM	(GMT --07:00) Pacific Standard Time	UC Davis	D8XSMGH1
Cartridge : Electrode		Instrument	Run		4/4/2012 4:09:28 PM	(GMT --07:00) Pacific Standard Time	UC Davis	D8XSMGH1