

Assay Class: High Sensitivity DNA Assay
Data Path: C:\...and Settings\Bioanalyzer\2012-04-05\2012-04-05_001fixed.xad

Created: 4/5/2012 9:06:33 AM
Modified: 4/5/2012 10:31:34 AM

Electrophoresis File Run Summary

Instrument Information:

Instrument Name: DE13701086 Firmware: C.01.069
Serial#: DE13701086 Type: G2938B

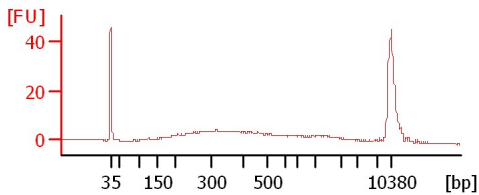
Assay Information:

Assay Origin Path: C:\Program Files\Agilent\2100 bioanalyzer\2100 expert\assays\dsDNA\High Sensitivity DNA.xsy
Assay Class: High Sensitivity DNA Assay
Version: 1.03
Assay Comments: Copyright © 2003-2010 Agilent Technologies

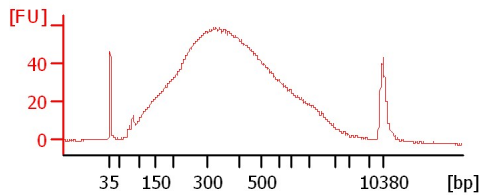
Chip Information:

Chip Lot #:
Reagent Kit Lot #:
Chip Comments:

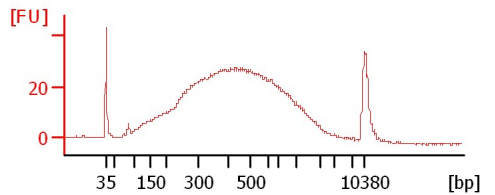
EK 1 Lib (4/3/12)



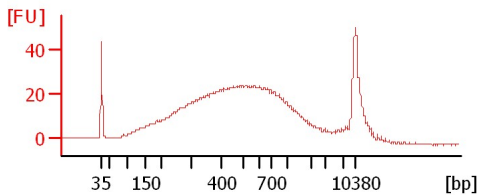
EK 8 Lib (4/3/12)



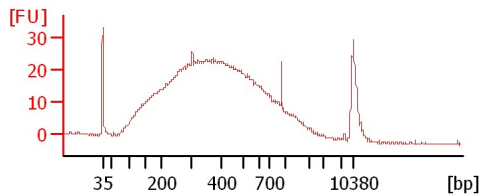
EK 10 Lib (4/4/12)



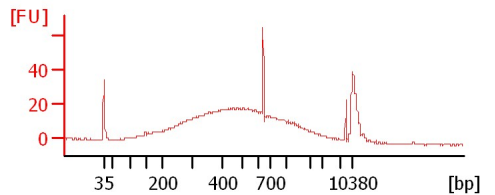
EK 11 Lib (4/4/12)



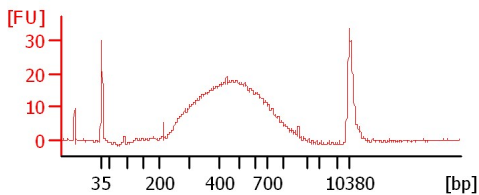
EK 12 Lib (4/4/12)



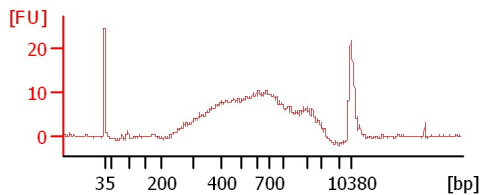
EK 13 Lib (4/4/12)



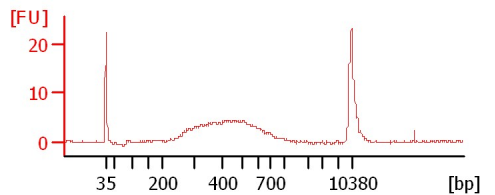
EK 14 Lib (4/4/12)



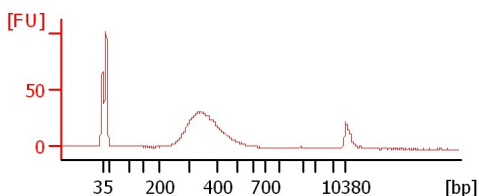
EK 15 Lib (4/4/12)



EK 16 Lib (4/4/12)



MVZ 1 10nM



Assay Class: High Sensitivity DNA Assay
Data Path: C:\...and Settings\Bioanalyzer\2012-04-05\2012-04-05_001fixed.xad

Created: 4/5/2012 9:06:33 AM
Modified: 4/5/2012 10:31:34 AM

Electrophoresis File Run Summary (Chip Summary)

Sample Name	Sample Comment	Rest. Digest	Status	Observation	Result Label	Result Color
EK 1 Lib (4/3/12)		<input type="checkbox"/>	✓			
EK 8 Lib (4/3/12)		<input type="checkbox"/>	✓			
EK 10 Lib (4/4/12)		<input type="checkbox"/>	✓			
EK 11 Lib (4/4/12)		<input type="checkbox"/>	✓			
EK 12 Lib (4/4/12)		<input type="checkbox"/>	✓			
EK 13 Lib (4/4/12)		<input type="checkbox"/>	✓			
EK 14 Lib (4/4/12)		<input type="checkbox"/>	✓			
EK 15 Lib (4/4/12)		<input type="checkbox"/>	✓			
EK 16 Lib (4/4/12)		<input type="checkbox"/>	✓			
MVZ 1 10nM		<input type="checkbox"/>	✓			
Ladder		<input type="checkbox"/>	✓			

Chip Lot #

Reagent Kit Lot #

Chip Comments :

Assay Class: High Sensitivity DNA Assay
Data Path: C:\...and Settings\Bioanalyzer\2012-04-05\2012-04-05_001fixed.xad

Created: 4/5/2012 9:06:33 AM
Modified: 4/5/2012 10:31:34 AM

Electrophoresis Assay Details

General Analysis Settings

Number of Available Sample and Ladder Wells (Max.) : 12
Minimum Visible Range [s] : 32
Maximum Visible Range [s] : 138
Start Analysis Time Range [s] : 33
End Analysis Time Range [s] : 137.5
Ladder Concentration [pg/μl] : 1950
Uses Standard Area for Ladder Fragments
Lower Marker Concentration [pg/μl] : 125
Upper Marker Concentration [pg/μl] : 75
Used Upper Marker for Quantitation
Standard Curve Fit is Point to Point
Show Data Aligned to Lower and Upper Marker

Integrator Settings

Integration Start Time [s] : 33.05
Integration End Time [s] : 137
Slope Threshold : 0.8
Height Threshold [FU] : 5
Area Threshold : 0.1
Width Threshold [s] : 0.6
Baseline Plateau [s] : 0.5

Filter Settings

Filter Width [s] : 0.5
Polynomial Order : 4

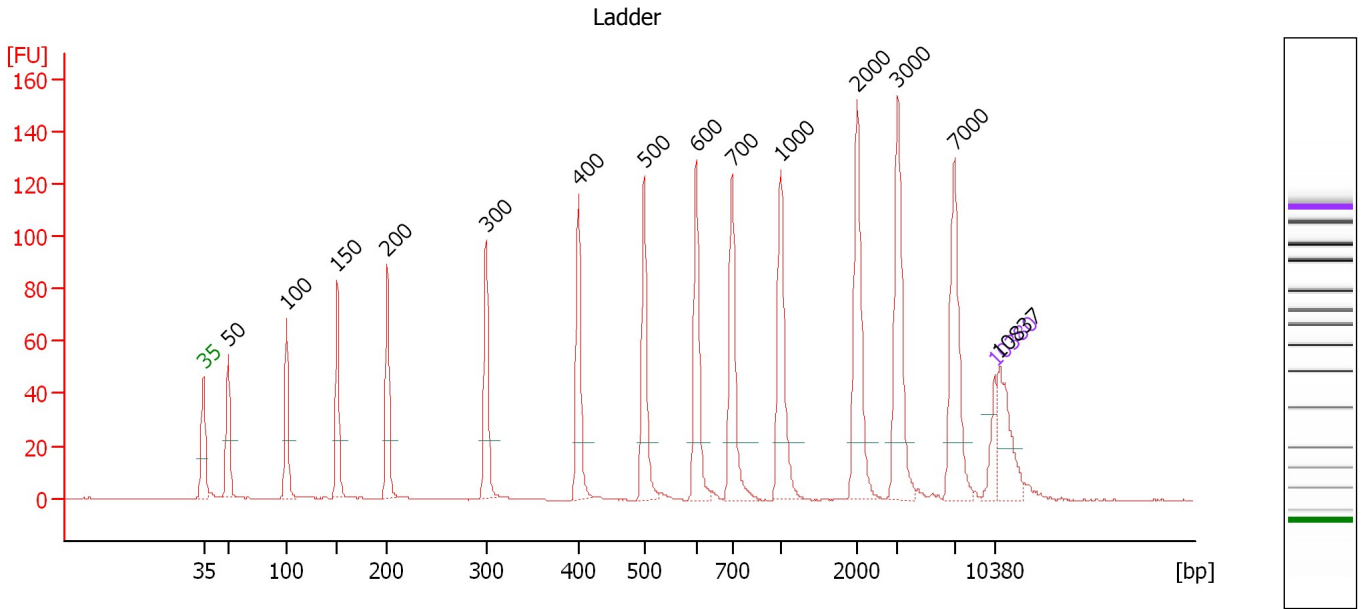
Ladder

Ladder Peak	Size	Area
1	35	160
2	50	210
3	100	208
4	150	221
5	200	242
6	300	270
7	400	305
8	500	306
9	600	336
10	700	321
11	1000	366
12	2000	413
13	3000	411
14	7000	400
15	10380	214

Assay Class: High Sensitivity DNA Assay
 Data Path: C:\...and Settings\Bioanalyzer\2012-04-05\2012-04-05_001fixed.xad

Created: 4/5/2012 9:06:33 AM
 Modified: 4/5/2012 10:31:34 AM

Electropherogram Summary



Overall Results for Ladder

Noise: 0.1

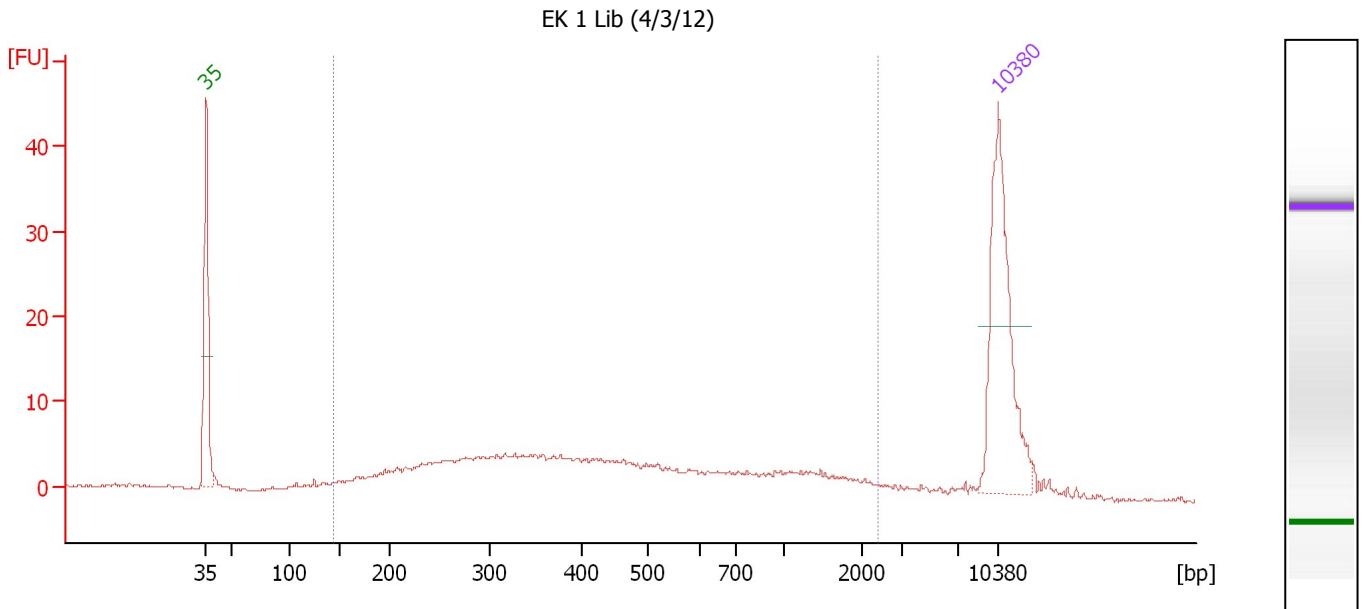
Peak table for Ladder

Peak	Size [bp]	Conc. [pg/μl]	Molarity [pmol/l]	Observations
1	35	125.00	5,411.3	Lower Marker
2	50	150.00	4,545.5	Ladder Peak
3	100	150.00	2,272.7	Ladder Peak
4	150	150.00	1,515.2	Ladder Peak
5	200	150.00	1,136.4	Ladder Peak
6	300	150.00	757.6	Ladder Peak
7	400	150.00	568.2	Ladder Peak
8	500	150.00	454.5	Ladder Peak
9	600	150.00	378.8	Ladder Peak
10	700	150.00	324.7	Ladder Peak
11	1,000	150.00	227.3	Ladder Peak
12	2,000	150.00	113.6	Ladder Peak
13	3,000	150.00	75.8	Ladder Peak
14	7,000	150.00	32.5	Ladder Peak
15	10,380	75.00	10.9	Upper Marker
16	10,837	0.00	0.0	

Assay Class: High Sensitivity DNA Assay
 Data Path: C:\...and Settings\Bioanalyzer\2012-04-05\2012-04-05_001fixed.xad

Created: 4/5/2012 9:06:33 AM
 Modified: 4/5/2012 10:31:34 AM

Electropherogram Summary Continued ...



Overall Results for sample 1 : EK 1 Lib (4/3/12)

Number of peaks found: 0 Corr. Area 1: 189.9
 Noise: 0.2

Peak table for sample 1 : EK 1 Lib (4/3/12)

Peak	Size [bp]	Conc. [pg/μl]	Molarity [pmol/l]	Observations
1	35	125.00	5,411.3	Lower Marker
2	10,380	75.00	10.9	Upper Marker

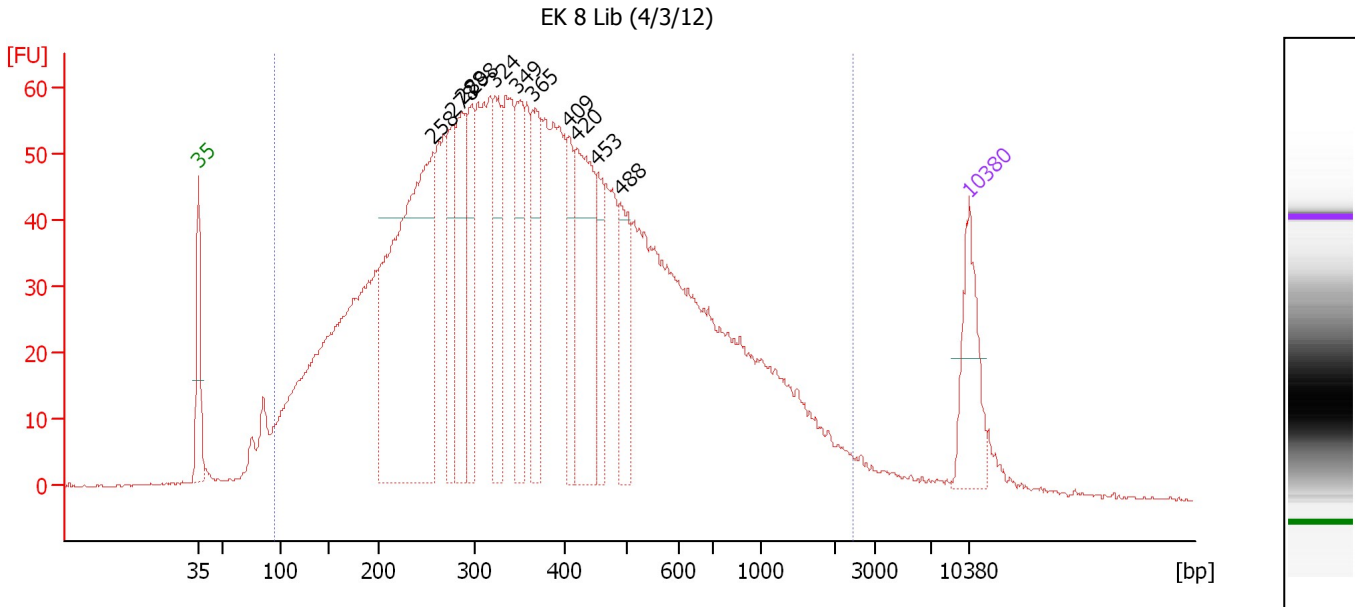
Region table for sample 1 : EK 1 Lib (4/3/12)

From [bp]	Molarity [pmol/l]	Average Size [bp]	Conc. [pg/μl]	To [bp]	Corr. Area	% of Total	Size distribution in CV [%]	Color
143	1,203.3	568	272.47	2,398	189.9	88	77.4	Blue

Assay Class: High Sensitivity DNA Assay
 Data Path: C:\...and Settings\Bioanalyzer\2012-04-05\2012-04-05_001fixed.xad

Created: 4/5/2012 9:06:33 AM
 Modified: 4/5/2012 10:31:34 AM

Electropherogram Summary Continued ...



Setpoint Deviations for sample 2 : EK 8 Lib (4/3/12)

Height Threshold [FU] : 40

Overall Results for sample 2 : EK 8 Lib (4/3/12)

Number of peaks found: 11 Corr. Area 1: 2,542.6
 Noise: 0.2

Peak table for sample 2 : EK 8 Lib (4/3/12)

Peak	Size [bp]	Conc. [pg/μl]	Molarity [pmol/l]	Observations
1	35	125.00	5,411.3	Lower Marker
2	258	670.86	3,943.2	
3	278	124.26	676.5	
4	288	165.13	869.5	
5	298	109.95	559.5	
6	324	135.64	634.9	
7	349	127.01	552.0	
8	365	139.11	577.0	
9	409	72.83	270.0	
10	420	216.58	780.5	
11	453	77.49	259.2	
12	488	96.64	300.0	
13	10,380	75.00	10.9	Upper Marker

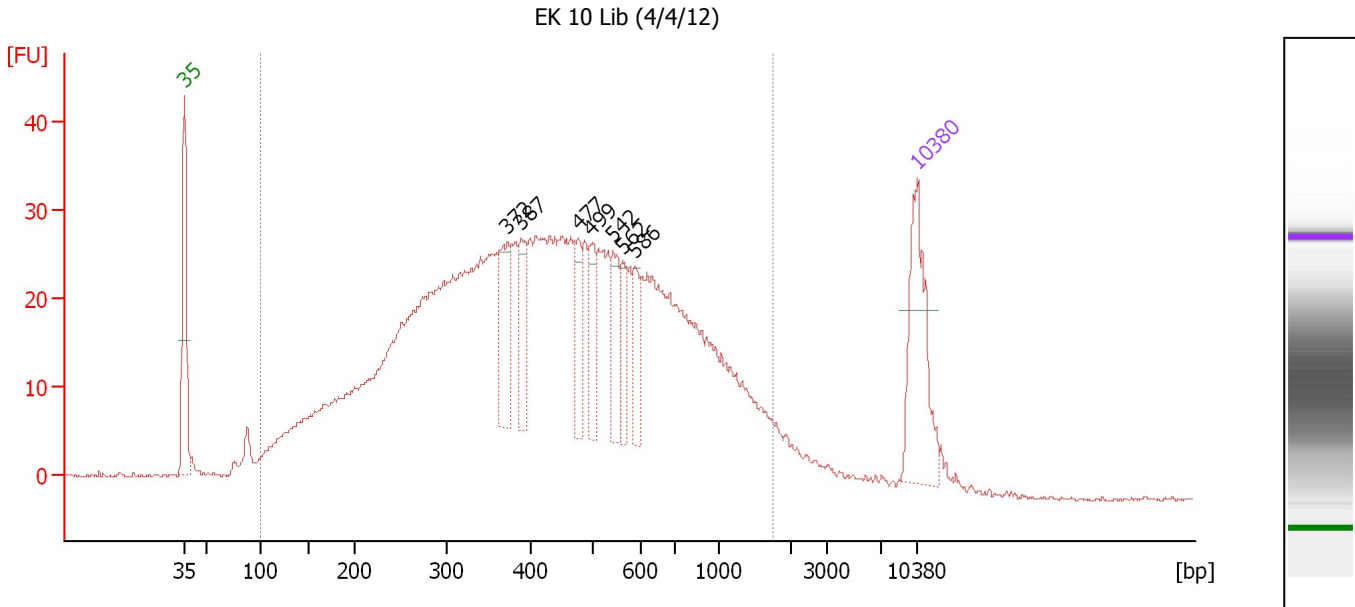
Region table for sample 2 : EK 8 Lib (4/3/12)

From [bp]	Molarity [pmol/l]	Average Size [bp]	Conc. [pg/μl]	To [bp]	Corr. Area	% of Total	Size distribution in CV [%]	Color
96	25,708.5	449	4,810.87	2,473	2,542.6	96	72.8	■

Assay Class: High Sensitivity DNA Assay
 Data Path: C:\...and Settings\Bioanalyzer\2012-04-05\2012-04-05_001fixed.xad

Created: 4/5/2012 9:06:33 AM
 Modified: 4/5/2012 10:31:34 AM

Electropherogram Summary Continued ...



Setpoint Deviations for sample 4 : EK 10 Lib (4/4/12)

Height Threshold [FU] : 20

Overall Results for sample 4 : EK 10 Lib (4/4/12)

Number of peaks found: 7 Corr. Area 1: 1,184.0
 Noise: 0.2

Peak table for sample 4 : EK 10 Lib (4/4/12)

Peak	Size [bp]	Conc. [pg/μl]	Molarity [pmol/l]	Observations
1	35	125.00	5,411.3	Lower Marker
2	372	68.69	280.0	
3	387	38.80	151.8	
4	477	34.26	108.8	
5	499	35.76	108.6	
6	542	39.16	109.6	
7	562	28.02	75.5	
8	586	28.33	73.3	
9	10,380	75.00	10.9	Upper Marker

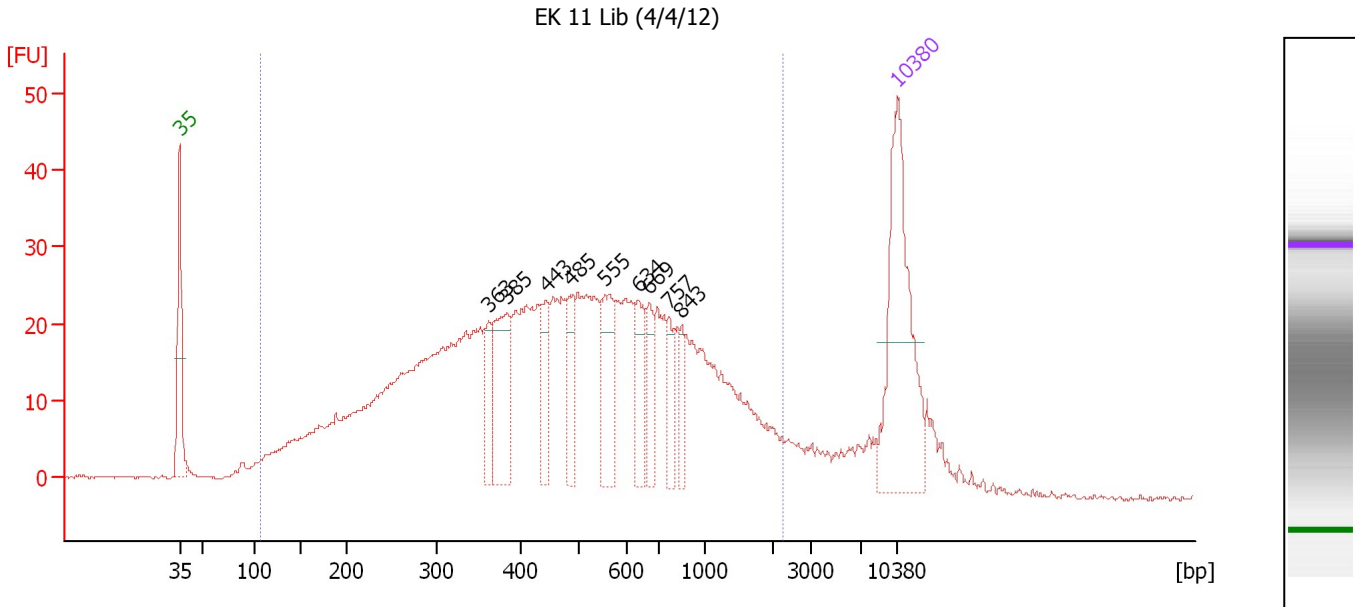
Region table for sample 4 : EK 10 Lib (4/4/12)

From [bp]	Molarity [pmol/l]	Average Size [bp]	Conc. [pg/μl]	To [bp]	Corr. Area	% of Total	Size distribution in CV [%]	Color
99	10,958.7	495	2,375.79	1,769	1,184.0	95	58.7	Blue

Assay Class: High Sensitivity DNA Assay
 Data Path: C:\...and Settings\Bioanalyzer\2012-04-05\2012-04-05_001fixed.xad

Created: 4/5/2012 9:06:33 AM
 Modified: 4/5/2012 10:31:34 AM

Electropherogram Summary Continued ...



Setpoint Deviations for sample 5 : EK 11 Lib (4/4/12)

Height Threshold [FU] : 20

Overall Results for sample 5 : EK 11 Lib (4/4/12)

Number of peaks found: 9 Corr. Area 1: 1,055.1
 Noise: 0.2

Peak table for sample 5 : EK 11 Lib (4/4/12)

Peak	Size [bp]	Conc. [pg/μl]	Molarity [pmol/l]	Observations
1	35	125.00	5,411.3	Lower Marker
2	363	22.42	93.6	
3	385	52.18	205.3	
4	443	25.87	88.4	
5	485	22.94	71.7	
6	555	36.20	98.9	
7	634	24.05	57.5	
8	669	18.67	42.3	
9	757	16.59	33.2	
10	843	13.15	23.6	
11	10,380	75.00	10.9	Upper Marker

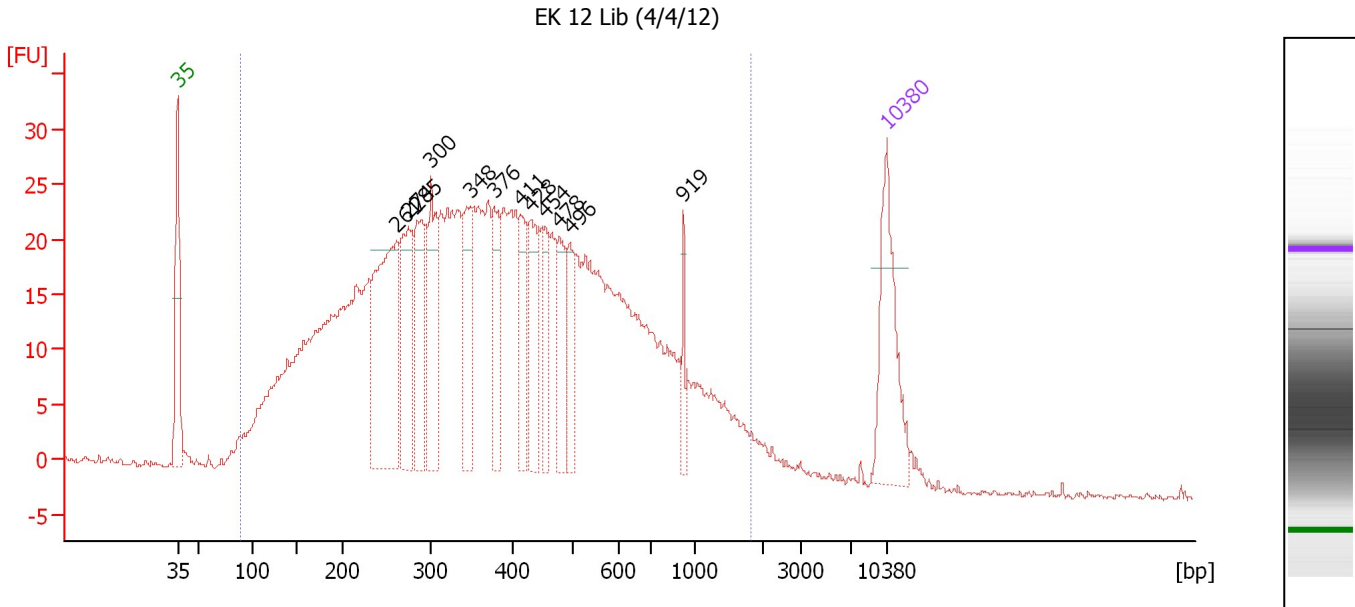
Region table for sample 5 : EK 11 Lib (4/4/12)

From [bp]	Molarity [pmol/l]	Average Size [bp]	Conc. [pg/μl]	To [bp]	Corr. Area	% of Total	Size distribution in CV [%]	Color
106	4,657.6	573	1,080.11	2,271	1,055.1	92	67.0	Blue

Assay Class: High Sensitivity DNA Assay
 Data Path: C:\...and Settings\Bioanalyzer\2012-04-05\2012-04-05_001fixed.xad

Created: 4/5/2012 9:06:33 AM
 Modified: 4/5/2012 10:31:34 AM

Electropherogram Summary Continued ...



Setpoint Deviations for sample 6 : EK 12 Lib (4/4/12)

Height Threshold [FU] : 20

Overall Results for sample 6 : EK 12 Lib (4/4/12)

Number of peaks found: 12 Corr. Area 1: 1,098.9
 Noise: 0.3

Peak table for sample 6 : EK 12 Lib (4/4/12)

Peak	Size [bp]	Conc. [pg/μl]	Molarity [pmol/l]	Observations
1	35	125.00	5,411.3	Lower Marker
2	261	217.87	1,263.7	
3	274	111.94	617.9	
4	285	86.57	460.7	
5	300	88.58	447.7	
6	348	83.38	362.9	
7	376	58.02	233.5	
8	411	49.86	183.6	
9	428	61.72	218.7	
10	454	46.10	153.9	
11	478	52.10	165.3	
12	496	44.31	135.4	
13	919	19.86	32.8	
14	10,380	75.00	10.9	Upper Marker

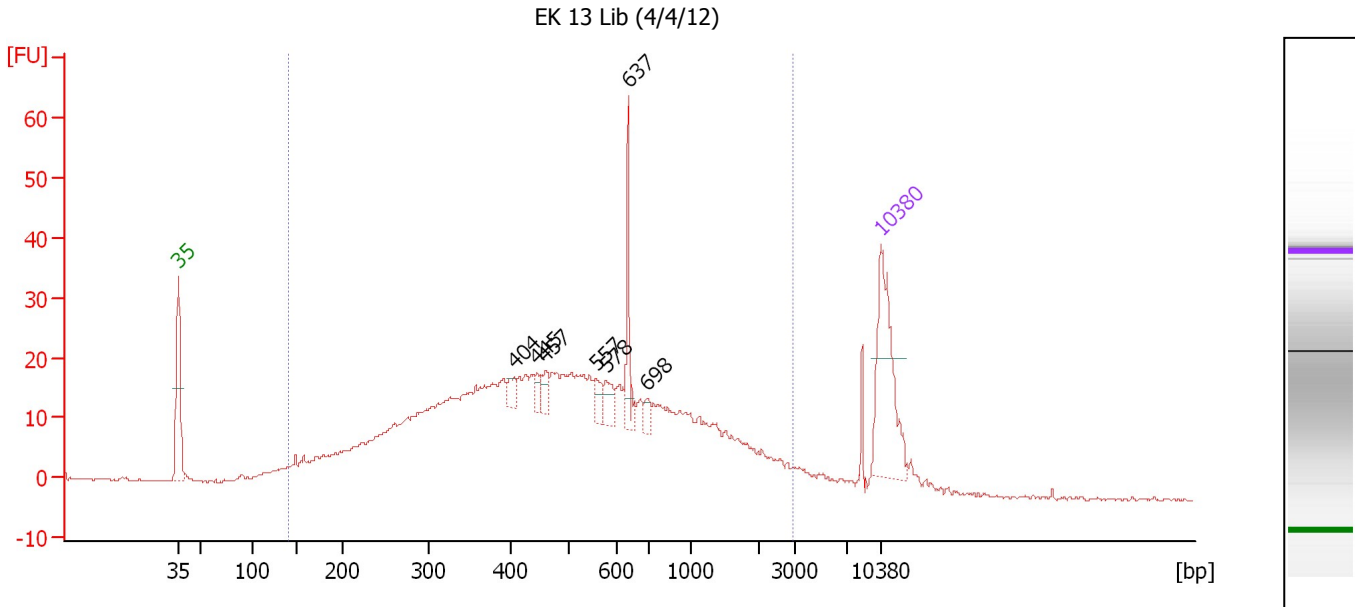
Region table for sample 6 : EK 12 Lib (4/4/12)

From [bp]	Molarity [pmol/l]	Average Size [bp]	Conc. [pg/μl]	To [bp]	Corr. Area	% of Total	Size distribution in CV [%]	Color
90	14,782.6	442	2,778.79	1,827	1,098.8	96	62.9	Blue

Assay Class: High Sensitivity DNA Assay
 Data Path: C:\...and Settings\Bioanalyzer\2012-04-05\2012-04-05_001fixed.xad

Created: 4/5/2012 9:06:33 AM
 Modified: 4/5/2012 10:31:34 AM

Electropherogram Summary Continued ...



Overall Results for sample 7 : EK 13 Lib (4/4/12)

Number of peaks found: 7 Corr. Area 1: 766.2
 Noise: 0.2

Peak table for sample 7 : EK 13 Lib (4/4/12)

Peak	Size [bp]	Conc. [pg/μl]	Molarity [pmol/l]	Observations
1	35	125.00	5,411.3	Lower Marker
2	404	10.37	38.9	
3	445	9.73	33.2	
4	457	11.18	37.0	
5	557	12.65	34.4	
6	578	15.46	40.5	
7	637	32.00	76.1	
8	698	7.89	17.1	
9	10,380	75.00	10.9	Upper Marker

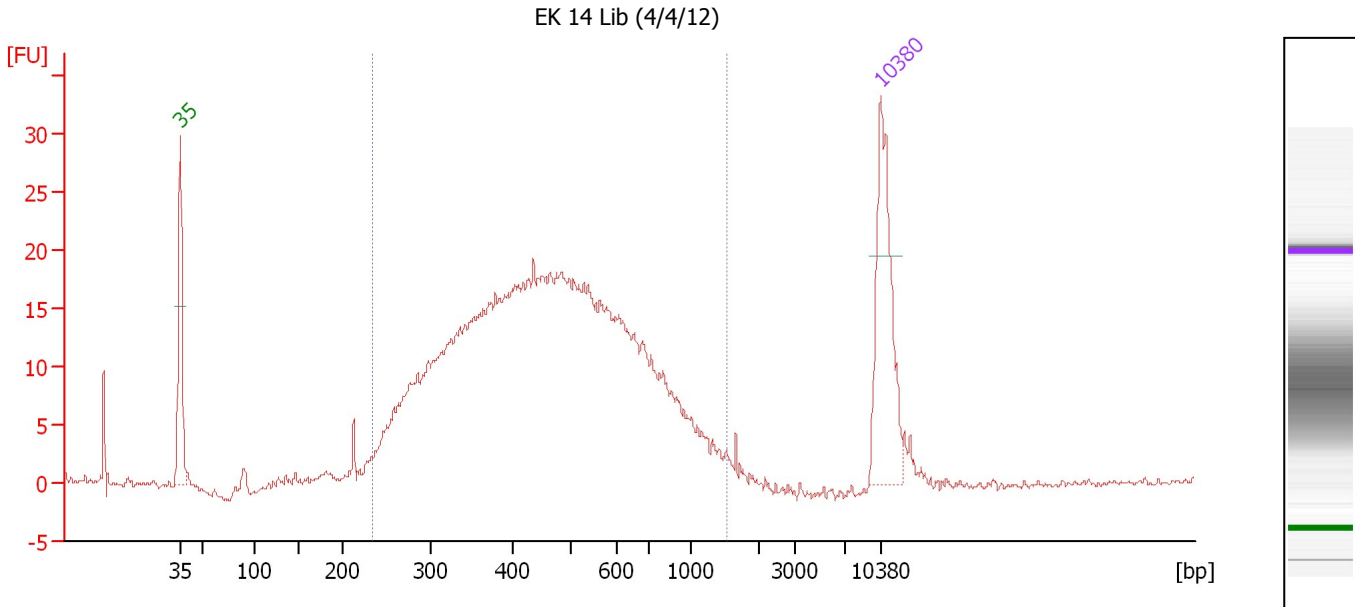
Region table for sample 7 : EK 13 Lib (4/4/12)

From [bp]	Molarity [pmol/l]	Average Size [bp]	Conc. [pg/μl]	To [bp]	Corr. Area	% of Total	Size distribution in CV [%]	Color
142	5,490.9	624	1,402.80	2,903	766.2	94	75.3	Blue

Assay Class: High Sensitivity DNA Assay
 Data Path: C:\...and Settings\Bioanalyzer\2012-04-05\2012-04-05_001fixed.xad

Created: 4/5/2012 9:06:33 AM
 Modified: 4/5/2012 10:31:34 AM

Electropherogram Summary Continued ...



Setpoint Deviations for sample 8 : EK 14 Lib (4/4/12)

Height Threshold [FU] : 20

Overall Results for sample 8 : EK 14 Lib (4/4/12)

Number of peaks found: 0 Corr. Area 1: 498.8
 Noise: 0.2

Peak table for sample 8 : EK 14 Lib (4/4/12)

Peak	Size [bp]	Conc. [pg/μl]	Molarity [pmol/l]	Observations
1	35	125.00	5,411.3	Lower Marker
2	10,380	75.00	10.9	Upper Marker

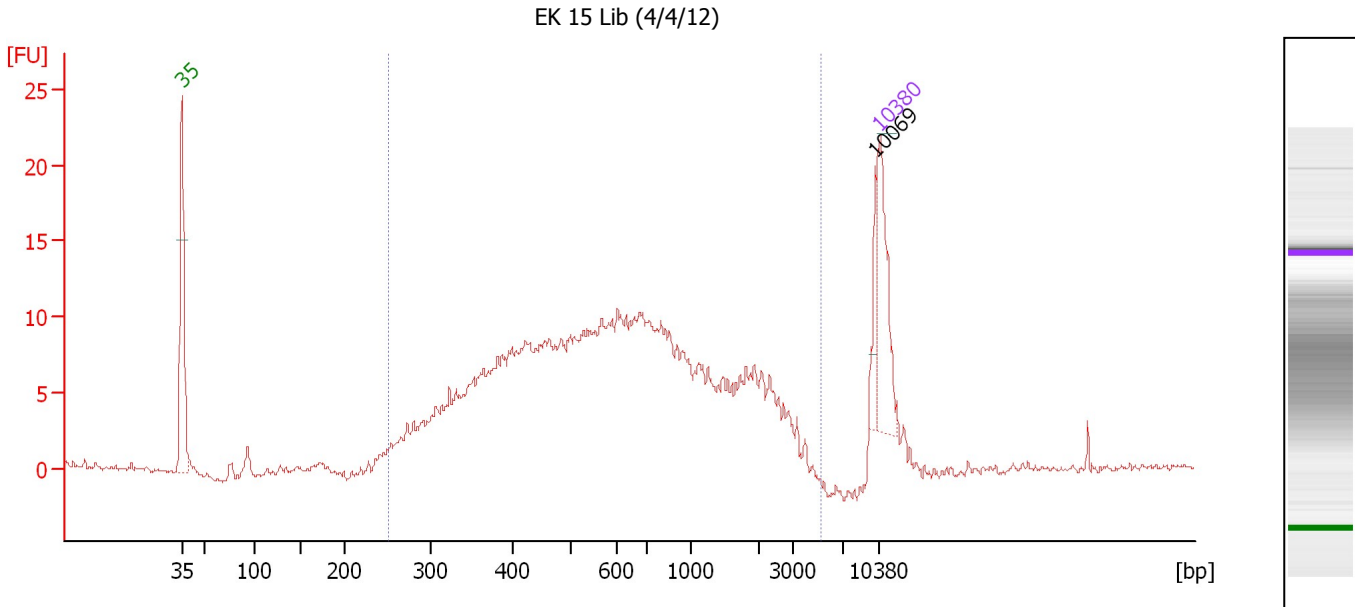
Region table for sample 8 : EK 14 Lib (4/4/12)

From [bp]	Molarity [pmol/l]	Average Size [bp]	Conc. [pg/μl]	To [bp]	Corr. Area	% of Total	Size distribution in CV [%]	Color
233	3,942.3	497	1,091.11	1,506	498.8	96	39.9	Blue

Assay Class: High Sensitivity DNA Assay
 Data Path: C:\...and Settings\Bioanalyzer\2012-04-05\2012-04-05_001fixed.xad

Created: 4/5/2012 9:06:33 AM
 Modified: 4/5/2012 10:31:34 AM

Electropherogram Summary Continued ...



Overall Results for sample 9 : EK 15 Lib (4/4/12)

Number of peaks found: 1 Corr. Area 1: 298.7
 Noise: 0.2

Peak table for sample 9 : EK 15 Lib (4/4/12)

Peak	Size [bp]	Conc. [pg/μl]	Molarity [pmol/l]	Observations
1	35	125.00	5,411.3	Lower Marker
2	10,069	31.86	4.8	
3	10,380	75.00	10.9	Upper Marker

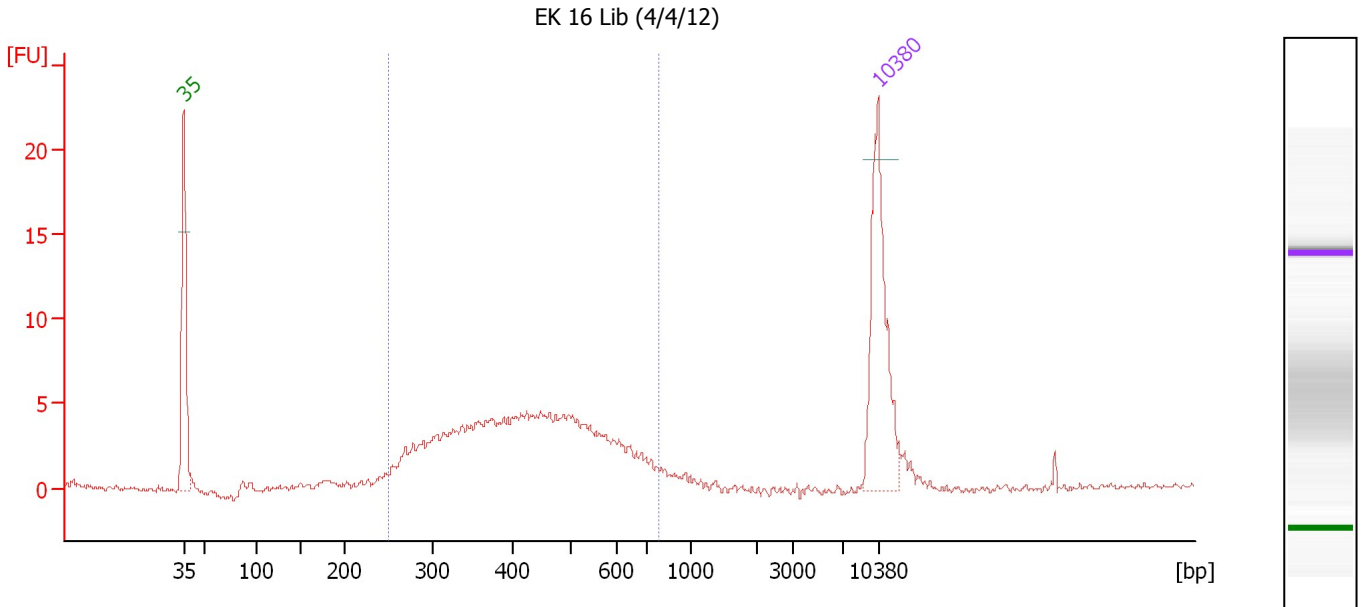
Region table for sample 9 : EK 15 Lib (4/4/12)

From [bp]	Molarity [pmol/l]	Average Size [bp]	Conc. [pg/μl]	To [bp]	Corr. Area	% of Total	Size distribution in CV [%]	Color
251	4,728.7	818	1,630.50	5,209	298.7	95	75.8	Blue

Assay Class: High Sensitivity DNA Assay
 Data Path: C:\...and Settings\Bioanalyzer\2012-04-05\2012-04-05_001fixed.xad

Created: 4/5/2012 9:06:33 AM
 Modified: 4/5/2012 10:31:34 AM

Electropherogram Summary Continued ...



Overall Results for sample 10 : EK 16 Lib (4/4/12)

Number of peaks found: 0 Corr. Area 1: 98.9
 Noise: 0.2

Peak table for sample 10 : EK 16 Lib (4/4/12)

Peak	Size [bp]	Conc. [pg/μl]	Molarity [pmol/l]	Observations
1	35	125.00	5,411.3	Lower Marker
2	10,380	75.00	10.9	Upper Marker

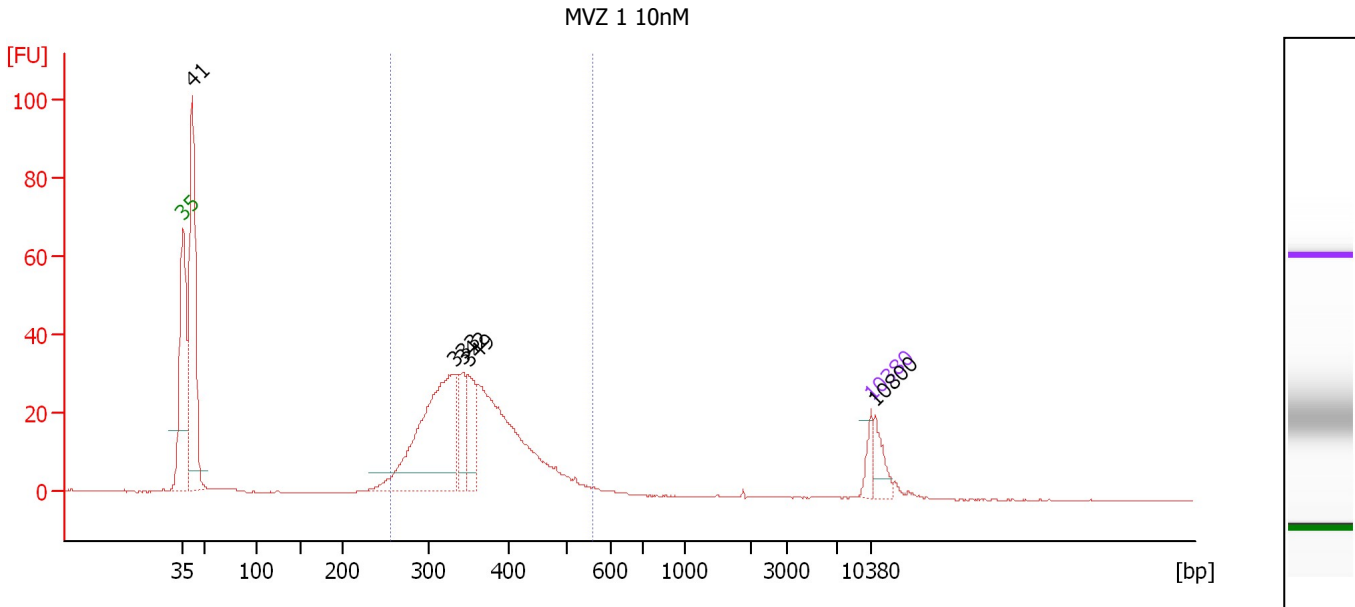
Region table for sample 10 : EK 16 Lib (4/4/12)

From [bp]	Molarity [pmol/l]	Average Size [bp]	Conc. [pg/μl]	To [bp]	Corr. Area	% of Total	Size distribution in CV [%]	Color
250	1,246.0	437	327.83	779	98.9	94	25.6	Blue

Assay Class: High Sensitivity DNA Assay
 Data Path: C:\...and Settings\Bioanalyzer\2012-04-05\2012-04-05_001fixed.xad

Created: 4/5/2012 9:06:33 AM
 Modified: 4/5/2012 10:31:34 AM

Electropherogram Summary Continued ...



Overall Results for sample 11 : MVZ 1 10nM

Number of peaks found: 5 Corr. Area 1: 440.9
 Noise: 0.1

Peak table for sample 11 : MVZ 1 10nM

Peak	Size [bp]	Conc. [pg/μl]	Molarity [pmol/l]	Observations
1	35	125.00	5,411.3	Lower Marker
2	41	1,852.90	67,848.4	
3	333	1,445.38	6,580.3	
4	342	269.30	1,192.7	
5	349	306.81	1,332.9	
6	10,380	75.00	10.9	Upper Marker
7	10,800	0.00	0.0	

Region table for sample 11 : MVZ 1 10nM

From [bp]	Molarity [pmol/l]	Average Size [bp]	Conc. [pg/μl]	To [bp]	Corr. Area	% of Total	Size distribution in CV [%]	Color
255	15,862.6	359	3,641.92	559	440.9	68	16.4	Blue

Assay Class: High Sensitivity DNA Assay
Data Path: C:\...and Settings\Bioanalyzer\2012-04-05\2012-04-05_001fixed.xad

Created: 4/5/2012 9:06:33 AM
Modified: 4/5/2012 10:31:34 AM

Gel Image

Assay Class: High Sensitivity DNA Assay
 Data Path: C:\...and Settings\Bioanalyzer\2012-04-05\2012-04-05_001fixed.xad

Created: 4/5/2012 9:06:33 AM
 Modified: 4/5/2012 10:31:34 AM

Run Logbook

Description	Number	Source	Category	Sub Category	Time	Time Zone	User	Host
Run ended on port 1 (Number of wells acquired: 12)		Instrument	Run		4/5/2012 9:47:52 AM	(GMT --07:00) Pacific Standard Time	UC Davis	D8XSMGH1
Run started on port 1 (File: C:\Documents and Settings\Bioanalyzer\2012-04-05\2012-04-05_001.xad)		Instrument	Run		4/5/2012 9:06:38 AM	(GMT --07:00) Pacific Standard Time	UC Davis	D8XSMGH1
Product Number : G2938B		Instrument	Run		4/5/2012 9:06:38 AM	(GMT --07:00) Pacific Standard Time	UC Davis	D8XSMGH1
Name :		Instrument	Run		4/5/2012 9:06:38 AM	(GMT --07:00) Pacific Standard Time	UC Davis	D8XSMGH1
Vendor : Agilent Technologies		Instrument	Run		4/5/2012 9:06:38 AM	(GMT --07:00) Pacific Standard Time	UC Davis	D8XSMGH1
Serial# : DE13701086		Instrument	Run		4/5/2012 9:06:38 AM	(GMT --07:00) Pacific Standard Time	UC Davis	D8XSMGH1
Firmware : C.01.069		Instrument	Run		4/5/2012 9:06:38 AM	(GMT --07:00) Pacific Standard Time	UC Davis	D8XSMGH1
Cartridge : Electrode		Instrument	Run		4/5/2012 9:06:38 AM	(GMT --07:00) Pacific Standard Time	UC Davis	D8XSMGH1