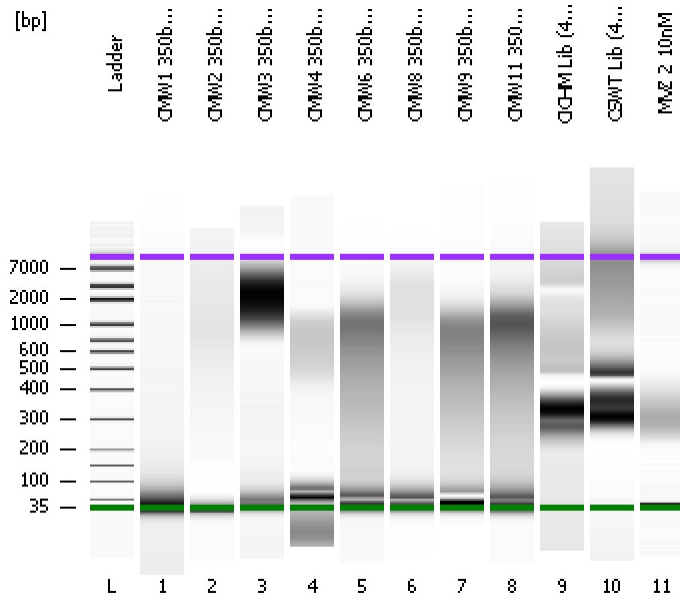


Assay Class: High Sensitivity DNA Assay
Data Path: C:\...ents and Settings\Bioanalyzer\2012-04-05\2012-04-05_002.xad

Created: 4/5/2012 1:02:04 PM
Modified: 4/5/2012 1:48:12 PM

Electrophoresis File Run Summary



Instrument Information:

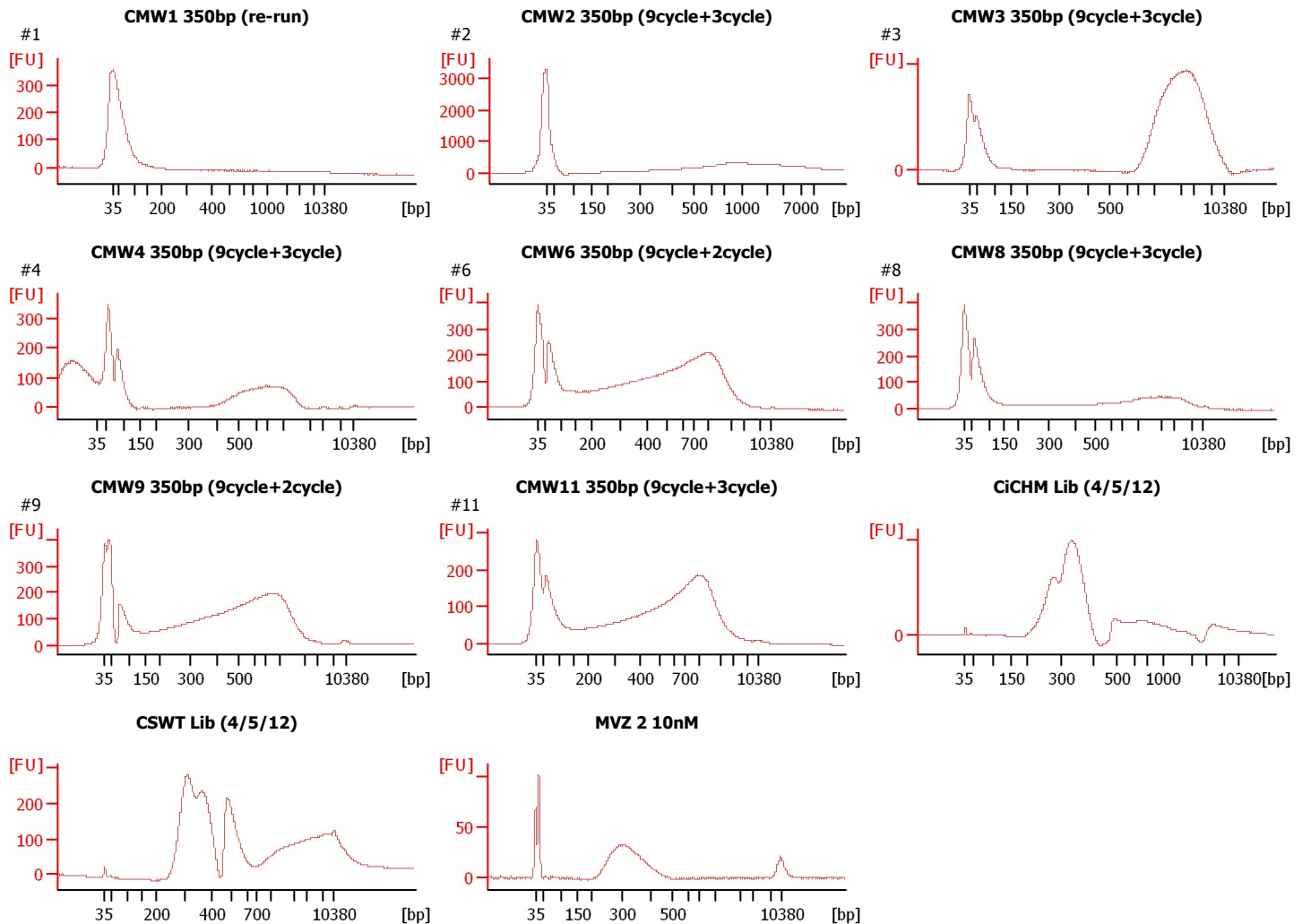
Instrument Name: DE13701086 Firmware: C.01.069
Serial#: DE13701086 Type: G2938B

Assay Information:

Assay Origin Path: C:\Program Files\Agilent\2100 bioanalyzer\2100 expert\assays\dsDNA\High Sensitivity DNA.xsy
Assay Class: High Sensitivity DNA Assay
Version: 1.03
Assay Comments: Copyright © 2003-2010 Agilent Technologies

Chip Information:

Chip Lot #:
Reagent Kit Lot #:
Chip Comments:



Assay Class: High Sensitivity DNA Assay
 Data Path: C:\...ents and Settings\Bioanalyzer\2012-04-05\2012-04-05_002.xad

Created: 4/5/2012 1:02:04 PM
 Modified: 4/5/2012 1:48:12 PM

Electrophoresis File Run Summary (Chip Summary)

Sample Name	Sample Comment	Rest. Digest	Status	Observation	Result Label	Result Color
CMW1 350bp (re-run)	#1	<input type="checkbox"/>	✓			
CMW2 350bp (9cycle+3cycle)	#2	<input type="checkbox"/>	✓			
CMW3 350bp (9cycle+3cycle)	#3	<input type="checkbox"/>	✓			
CMW4 350bp (9cycle+3cycle)	#4	<input type="checkbox"/>	✓			
CMW6 350bp (9cycle+2cycle)	#6	<input type="checkbox"/>	✓			
CMW8 350bp (9cycle+3cycle)	#8	<input type="checkbox"/>	✓			
CMW9 350bp (9cycle+2cycle)	#9	<input type="checkbox"/>	✓			
CMW11 350bp (9cycle+3cycle)	#11	<input type="checkbox"/>	✓			
CiCHM Lib (4/5/12)		<input type="checkbox"/>	✓			
CSWT Lib (4/5/12)		<input type="checkbox"/>	✓			
MVZ 2 10nM		<input type="checkbox"/>	✓			
Ladder		<input type="checkbox"/>	✓			

Chip Lot #

Reagent Kit Lot #

Chip Comments :

Assay Class: High Sensitivity DNA Assay
Data Path: C:\...ents and Settings\Bioanalyzer\2012-04-05\2012-04-05_002.xad

Created: 4/5/2012 1:02:04 PM
Modified: 4/5/2012 1:48:12 PM

Electrophoresis Assay Details

General Analysis Settings

Number of Available Sample and Ladder Wells (Max.) : 12
Minimum Visible Range [s] : 32
Maximum Visible Range [s] : 138
Start Analysis Time Range [s] : 33
End Analysis Time Range [s] : 137.5
Ladder Concentration [pg/μl] : 1950
Uses Standard Area for Ladder Fragments
Lower Marker Concentration [pg/μl] : 125
Upper Marker Concentration [pg/μl] : 75
Used Upper Marker for Quantitation
Standard Curve Fit is Point to Point
Show Data Aligned to Lower and Upper Marker

Integrator Settings

Integration Start Time [s] : 33.05
Integration End Time [s] : 137
Slope Threshold : 0.8
Height Threshold [FU] : 5
Area Threshold : 0.1
Width Threshold [s] : 0.6
Baseline Plateau [s] : 0.5

Filter Settings

Filter Width [s] : 0.5
Polynomial Order : 4

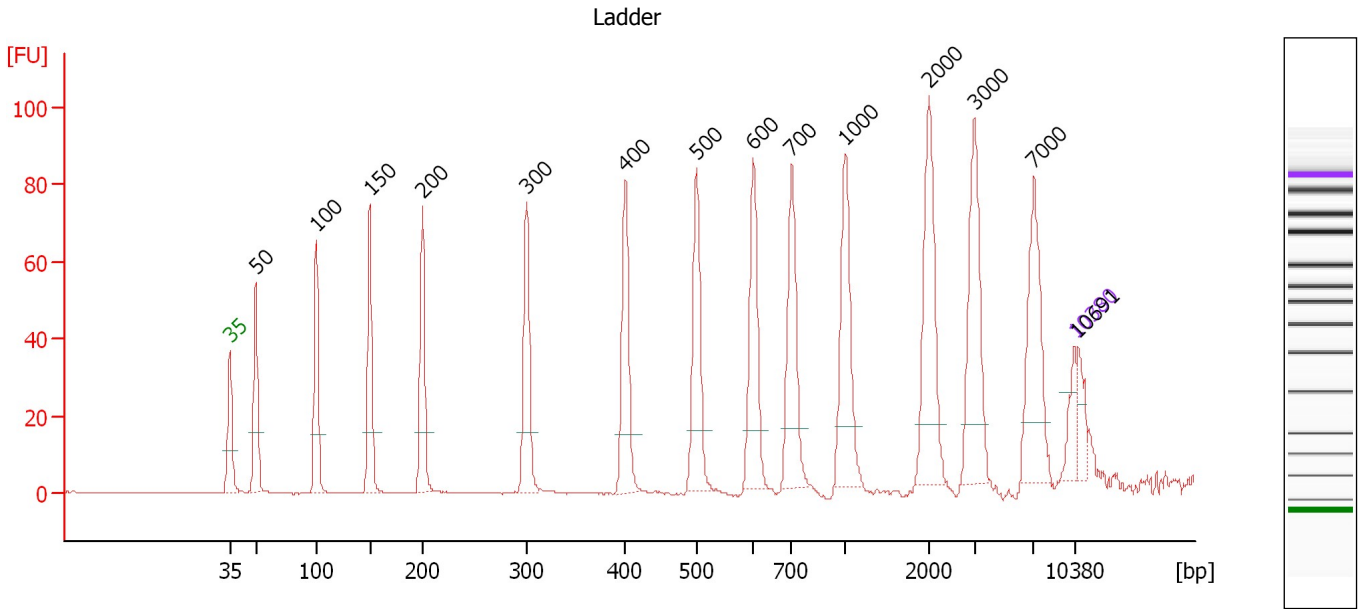
Ladder

Ladder Peak	Size	Area
1	35	160
2	50	210
3	100	208
4	150	221
5	200	242
6	300	270
7	400	305
8	500	306
9	600	336
10	700	321
11	1000	366
12	2000	413
13	3000	411
14	7000	400
15	10380	214

Assay Class: High Sensitivity DNA Assay
 Data Path: C:\...ents and Settings\Bioanalyzer\2012-04-05\2012-04-05_002.xad

Created: 4/5/2012 1:02:04 PM
 Modified: 4/5/2012 1:48:12 PM

Electropherogram Summary



Overall Results for Ladder

Noise: 0.1

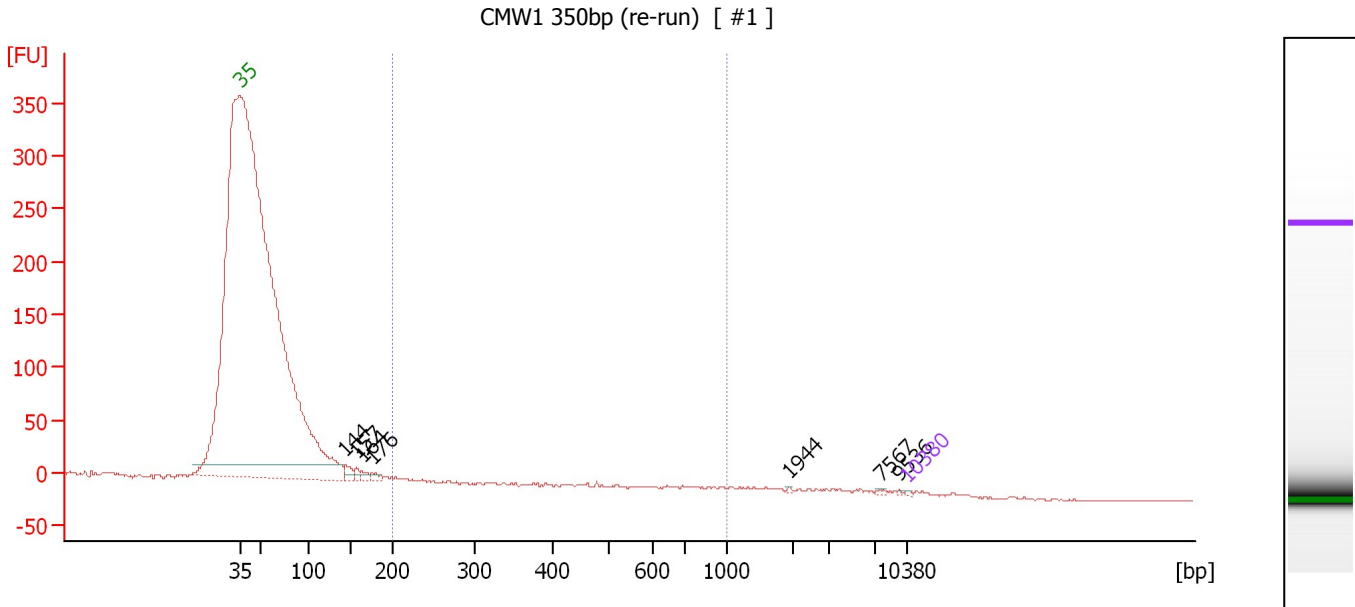
Peak table for Ladder

Peak	Size [bp]	Conc. [pg/μl]	Molarity [pmol/l]	Observations
1	35	125.00	5,411.3	Lower Marker
2	50	150.00	4,545.5	Ladder Peak
3	100	150.00	2,272.7	Ladder Peak
4	150	150.00	1,515.2	Ladder Peak
5	200	150.00	1,136.4	Ladder Peak
6	300	150.00	757.6	Ladder Peak
7	400	150.00	568.2	Ladder Peak
8	500	150.00	454.5	Ladder Peak
9	600	150.00	378.8	Ladder Peak
10	700	150.00	324.7	Ladder Peak
11	1,000	150.00	227.3	Ladder Peak
12	2,000	150.00	113.6	Ladder Peak
13	3,000	150.00	75.8	Ladder Peak
14	7,000	150.00	32.5	Ladder Peak
15	10,380	75.00	10.9	Upper Marker
16	10,691	0.00	0.0	

Assay Class: High Sensitivity DNA Assay
 Data Path: C:\...ents and Settings\Bioanalyzer\2012-04-05\2012-04-05_002.xad

Created: 4/5/2012 1:02:04 PM
 Modified: 4/5/2012 1:48:12 PM

Electropherogram Summary Continued ...



Overall Results for sample 1 : CMW1 350bp (re-run)

Number of peaks found: 7 Corr. Area 1: 30.3
 Noise: 0.3

Peak table for sample 1 : CMW1 350bp (re-run)

Peak	Size [bp]	Conc. [pg/μl]	Molarity [pmol/l]	Observations
1	35	125.00	5,411.3	Lower Marker
2	144	807.05	8,506.3	
3	157	497.17	4,794.7	
4	164	472.91	4,365.4	
5	176	500.05	4,313.7	
6	1,944	66.87	52.1	
7	7,567	125.17	25.1	
8	9,536	58.03	9.2	
9	10,380	75.00	10.9	Upper Marker

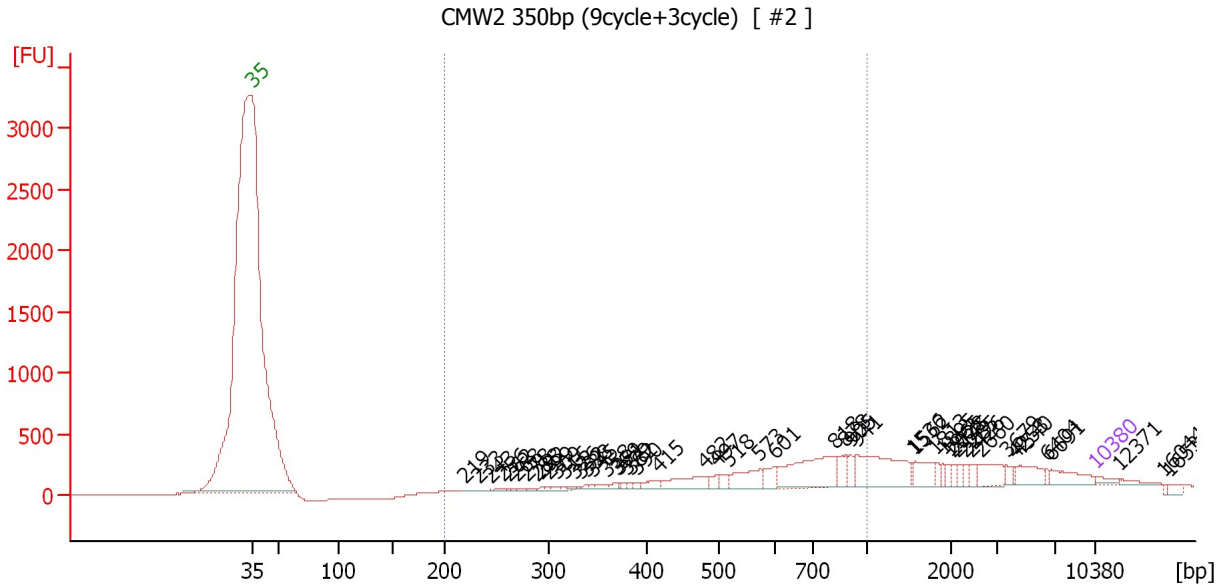
Region table for sample 1 : CMW1 350bp (re-run)

From [bp]	Molarity [pmol/l]	Average Size [bp]	Conc. [pg/μl]	To [bp]	Corr. Area	% of Total	Size distribution in CV [%]	Color
200	4,738.7	505	1,072.64	1,000	30.3	23	47.7	■

Assay Class: High Sensitivity DNA Assay
 Data Path: C:\...ents and Settings\Bioanalyzer\2012-04-05\2012-04-05_002.xad

Created: 4/5/2012 1:02:04 PM
 Modified: 4/5/2012 1:48:12 PM

Electropherogram Summary Continued ...



Setpoint Deviations for sample 2 : CMW2 350bp (9cycle+3cycle)

Slope Threshold : 0.01 Width Threshold [s] : 0.01
 Height Threshold [FU] : 0.01

Overall Results for sample 2 : CMW2 350bp (9cycle+3cycle)

Number of peaks found: 50 Corr. Area 1: 4,056.9
 Noise: 0.7

Peak table for sample 2 : CMW2 350bp (9cycle+3cycle)

Peak	Size [bp]	Conc. [pg/μl]	Molarity [pmol/l]	Observations
1	35	125.00	5,411.3	Lower Marker
2	219	0.37	2.5	
3	233	10.09	65.5	
4	243	8.23	51.2	
5	256	16.11	95.3	
6	262	8.30	47.9	
7	268	9.32	52.6	
8	278	22.53	122.7	
9	288	21.99	115.8	
10	292	20.82	107.9	
11	299	17.82	90.3	
12	309	35.18	172.7	
13	316	22.76	109.2	
14	326	38.81	180.4	
15	332	15.32	69.9	
16	338	34.51	154.6	
17	345	32.63	143.4	
18	358	68.29	288.9	
19	369	54.80	225.1	
20	371	9.22	37.7	
21	379	44.67	178.5	

Assay Class: High Sensitivity DNA Assay
 Data Path: C:\...ents and Settings\Bioanalyzer\2012-04-05\2012-04-05_002.xad


Created: 4/5/2012 1:02:04 PM
 Modified: 4/5/2012 1:48:12 PM

Electropherogram Summary Continued ...

... Peak table for sample 2 : CMW2 350bp (9cycle+3cycle)

Peak	Size [bp]	Conc. [pg/μl]	Molarity [pmol/l]	Observations
22	382	33.44	132.5	
23	390	48.20	187.3	
24	415	141.85	517.9	
25	482	444.48	1,397.6	
26	497	112.11	341.5	
27	518	124.49	363.9	
28	573	421.76	1,115.6	
29	601	205.90	518.7	
30	818	1,159.89	2,147.3	
31	878	218.83	377.6	
32	905	136.12	227.9	
33	941	1,074.58	1,730.6	
34	1,536	22.64	22.3	
35	1,562	305.99	296.9	
36	1,813	66.06	55.2	
37	1,895	70.28	56.2	
38	1,965	49.42	38.1	
39	2,028	73.85	55.2	
40	2,145	66.28	46.8	
41	2,285	64.80	43.0	
42	2,426	88.01	55.0	
43	2,660	299.29	170.5	
44	3,679	79.80	32.9	
45	4,253	31.51	11.2	
46	4,540	272.78	91.0	
47	6,404	37.97	9.0	
48	6,691	270.90	61.3	
49	10,380	75.00	10.9	Upper Marker
50	12,371	0.00	0.0	
51	16,044	0.00	0.0	
52	16,531	0.00	0.0	

Region table for sample 2 : CMW2 350bp (9cycle+3cycle)

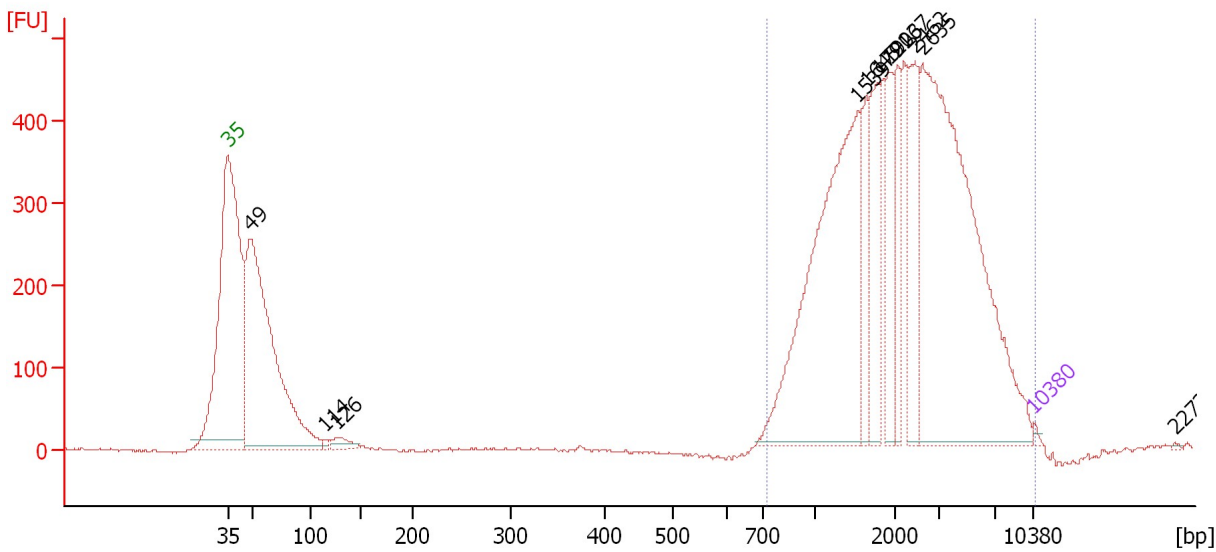
From [bp]	Molarity [pmol/l]	Average Size [bp]	Conc. [pg/μl]	To [bp]	Corr. Area	% of Total	Size distribution in CV [%]	Color
200	11,895.3	626	4,173.80	1,000	4,056.9	55	30.8	

Assay Class: High Sensitivity DNA Assay
 Data Path: C:\...ents and Settings\Bioanalyzer\2012-04-05\2012-04-05_002.xad

Created: 4/5/2012 1:02:04 PM
 Modified: 4/5/2012 1:48:12 PM

Electropherogram Summary Continued ...

CMW3 350bp (9cycle+3cycle) [#3]



Overall Results for sample 3 : CMW3 350bp (9cycle+3cycle)

Number of peaks found: 11 Corr. Area 1: 6,559.7
 Noise: 1.6

Peak table for sample 3 : CMW3 350bp (9cycle+3cycle)

Peak	Size [bp]	Conc. [pg/μl]	Molarity [pmol/l]	Observations
1	35	125.00	5,411.3	Lower Marker
2	49	18,047.37	560,346.5	
3	114	152.05	2,013.4	
4	126	515.65	6,203.1	
5	1,539	11,824.82	11,644.3	
6	1,645	1,899.13	1,749.4	
7	1,791	2,525.60	2,136.9	
8	1,923	2,073.60	1,633.4	
9	2,067	1,584.87	1,161.5	
10	2,462	2,666.23	1,640.8	
11	2,635	14,374.32	8,266.3	
12	10,380	75.00	10.9	Upper Marker
13	22,735	0.00	0.0	

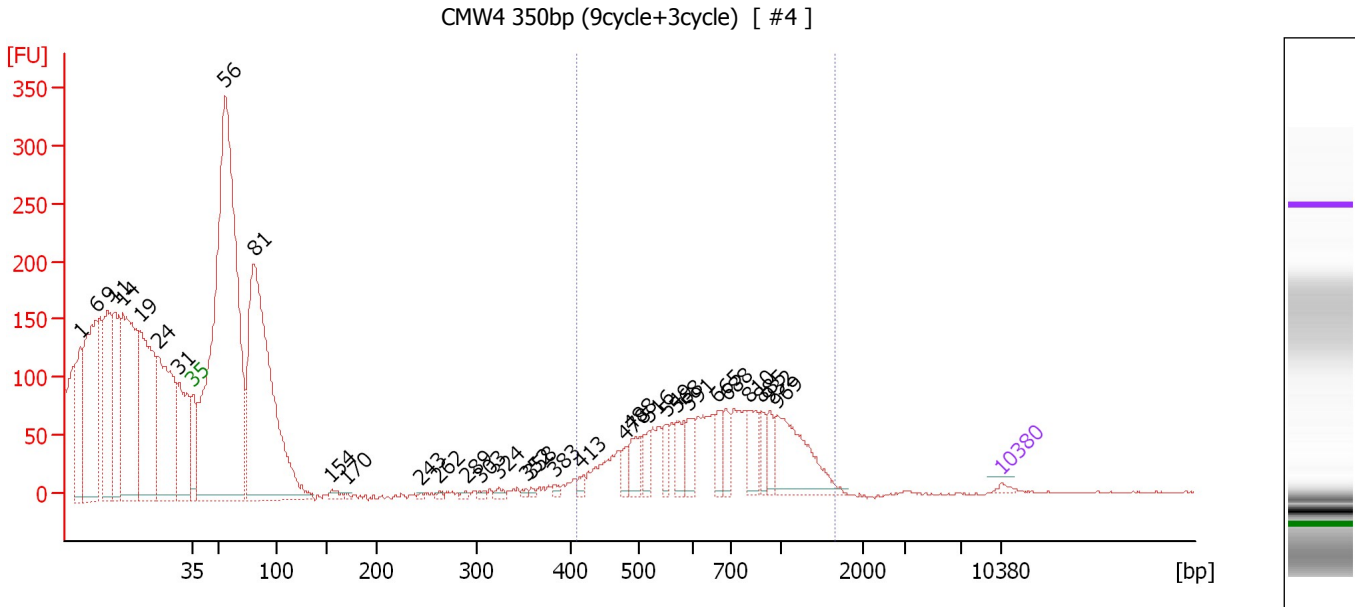
Region table for sample 3 : CMW3 350bp (9cycle+3cycle)

From [bp]	Molarity [pmol/l]	Average Size [bp]	Conc. [pg/μl]	To [bp]	Corr. Area	% of Total	Size distribution in CV [%]	Color
723	31,344.6	2,757	39,875.46	10,564	6,559.7	81	67.2	Blue

Assay Class: High Sensitivity DNA Assay
 Data Path: C:\...ents and Settings\Bioanalyzer\2012-04-05\2012-04-05_002.xad

Created: 4/5/2012 1:02:04 PM
 Modified: 4/5/2012 1:48:12 PM

Electropherogram Summary Continued ...



Overall Results for sample 4 : CMW4 350bp (9cycle+3cycle)

Number of peaks found: 33 Corr. Area 1: 282.7
 Noise: 0.5

Peak table for sample 4 : CMW4 350bp (9cycle+3cycle)


Peak	Size [bp]	Conc. [pg/μl]	Molarity [pmol/l]	Observations
1	1	0.00	0.0	
2	6	0.00	0.0	
3	9	0.00	0.0	
4	11	0.00	0.0	
5	14	0.00	0.0	
6	19	0.00	0.0	
7	24	0.00	0.0	
8	31	0.00	0.0	
9	35	125.00	5,411.3	Lower Marker
10	56	28,322.74	759,771.8	
11	81	16,153.74	302,965.2	
12	154	248.60	2,438.5	
13	170	62.13	554.5	
14	243	51.12	318.3	
15	262	75.75	437.9	
16	289	76.70	402.3	
17	303	86.38	432.0	
18	324	132.80	621.3	
19	352	68.98	296.8	
20	358	74.88	317.1	
21	383	113.91	451.0	
22	413	173.87	638.3	
23	478	367.98	1,165.7	
24	488	713.04	2,211.9	
25	516	494.38	1,451.8	
26	549	454.85	1,254.2	

Assay Class: High Sensitivity DNA Assay
 Data Path: C:\...ents and Settings\Bioanalyzer\2012-04-05\2012-04-05_002.xad


Created: 4/5/2012 1:02:04 PM
 Modified: 4/5/2012 1:48:12 PM

Electropherogram Summary Continued ...

... Peak table for sample 4 : CMW4 350bp (9cycle+3cycle)

Peak	Size [bp]	Conc. [pg/μl]	Molarity [pmol/l]	Observations
27	568	784.57	2,092.1	
28	591	642.28	1,646.9	
29	665	621.90	1,416.9	
30	688	548.83	1,208.2	
31	810	840.27	1,572.7	
32	885	443.51	759.5	
33	932	457.29	743.5	
34	969	2,271.71	3,550.4	
35	 10,380	75.00	10.9	Upper Marker

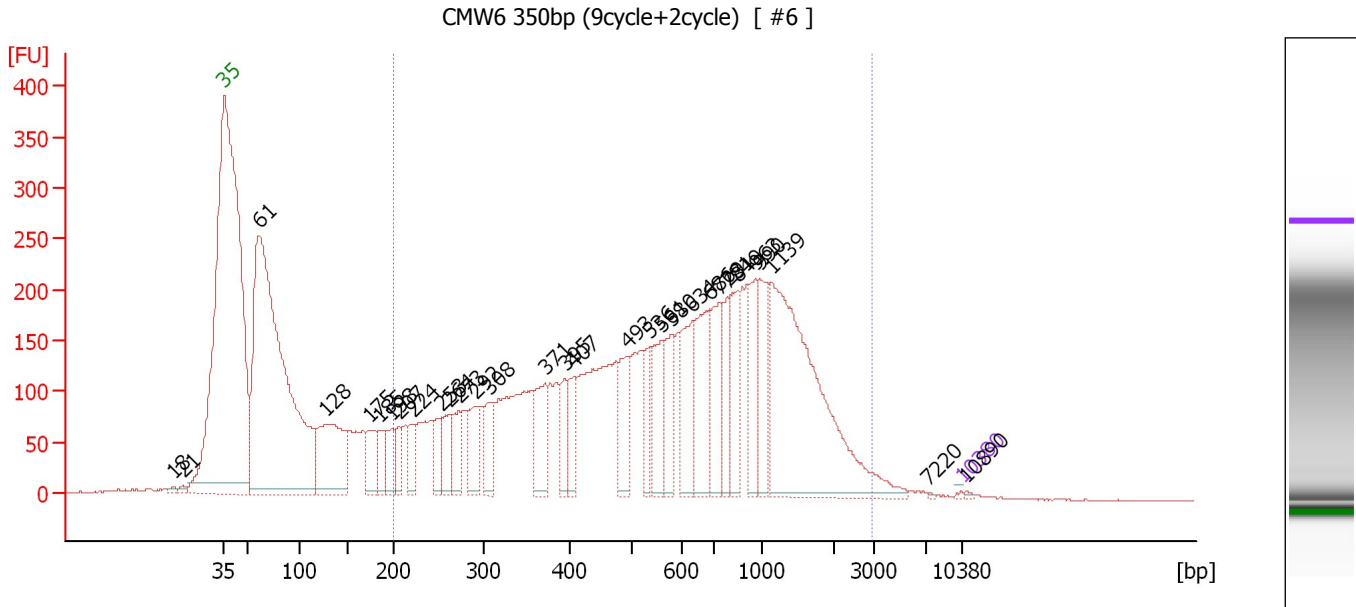
Region table for sample 4 : CMW4 350bp (9cycle+3cycle)

From [bp]	Molarity [pmol/l]	Average Size [bp]	Conc. [pg/μl]	To [bp]	Corr. Area	% of Total	Size distribution in CV [%]	Color
408	5,401.1	800	2,695.22	1,671	282.7	13	22.5	

Assay Class: High Sensitivity DNA Assay
 Data Path: C:\...ents and Settings\Bioanalyzer\2012-04-05\2012-04-05_002.xad

Created: 4/5/2012 1:02:04 PM
 Modified: 4/5/2012 1:48:12 PM

Electropherogram Summary Continued ...



Overall Results for sample 5 : CMW6 350bp (9cycle+2cycle)

Number of peaks found: 31 Corr. Area 1: 6,526.5
 Noise: 0.5

Peak table for sample 5 : CMW6 350bp (9cycle+2cycle)


Peak	Size [bp]	Conc. [pg/μl]	Molarity [pmol/l]	Observations
1	18	0.00	0.0	
2	21	0.00	0.0	
3	35	125.00	5,411.3	Lower Marker
4	61	59,578.14	1,475,370.1	
5	128	11,644.10	137,876.8	
6	175	3,803.55	33,001.9	
7	185	2,238.59	18,329.7	
8	198	2,649.46	20,237.7	
9	207	2,041.16	14,929.6	
10	224	2,519.22	17,070.0	
11	253	2,398.92	14,366.7	
12	264	2,921.83	16,796.0	
13	273	2,801.59	15,549.9	
14	292	4,019.39	20,829.2	
15	308	3,564.46	17,530.5	
16	371	4,675.73	19,081.7	
17	395	2,796.74	10,732.9	
18	407	2,814.91	10,469.5	
19	493	4,235.21	13,018.5	
20	536	2,721.92	7,687.7	
21	561	4,654.48	12,563.6	
22	580	3,743.67	9,784.7	
23	634	5,331.95	12,746.5	
24	686	6,848.98	15,119.9	
25	729	4,564.99	9,488.9	
26	781	2,955.97	5,738.3	

Assay Class: High Sensitivity DNA Assay
 Data Path: C:\...ents and Settings\Bioanalyzer\2012-04-05\2012-04-05_002.xad


Created: 4/5/2012 1:02:04 PM
 Modified: 4/5/2012 1:48:12 PM

Electropherogram Summary Continued ...

... Peak table for sample 5 : CMW6 350bp (9cycle+2cycle)

Peak	Size [bp]	Conc. [pg/μl]	Molarity [pmol/l]	Observations
27	849	4,296.05	7,664.4	
28	963	4,023.42	6,332.0	
29	990	4,420.46	6,763.6	
30	1,139	22,837.27	30,378.6	
31	7,220	65.39	13.7	
32	 10,380	75.00	10.9	Upper Marker
33	10,890	0.00	0.0	

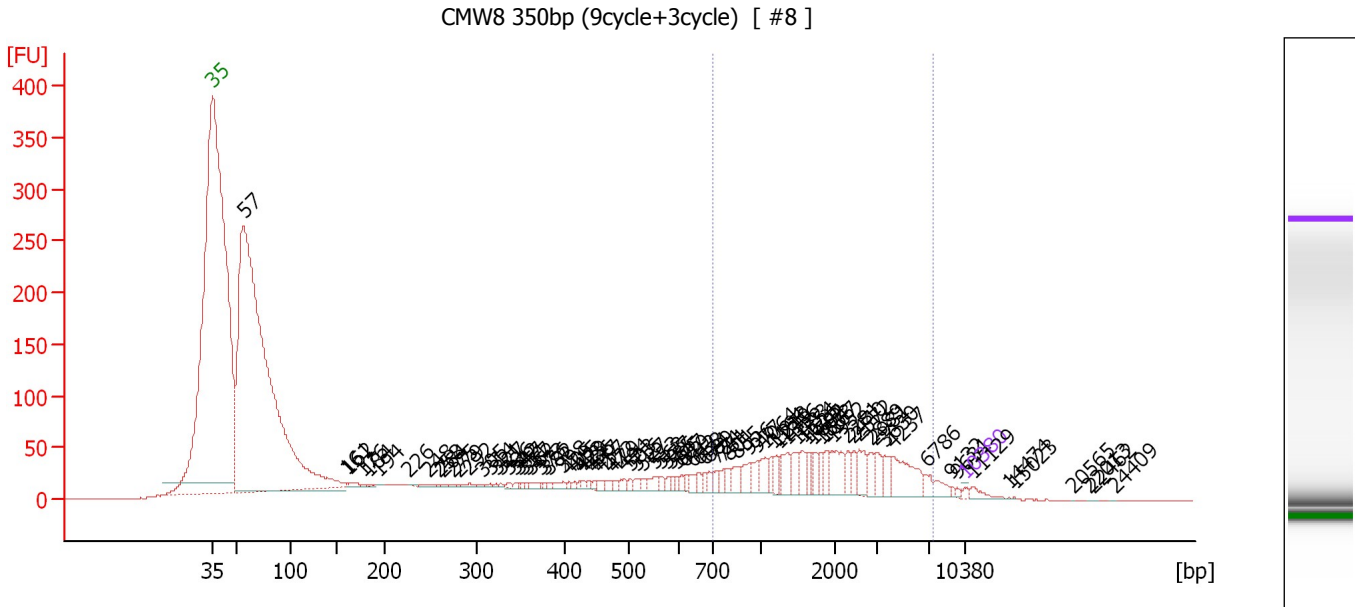
Region table for sample 5 : CMW6 350bp (9cycle+2cycle)

From [bp]	Molarity [pmol/l]	Average Size [bp]	Conc. [pg/μl]	To [bp]	Corr. Area	% of Total	Size distribution in CV [%]	Color
200	498,581.5	753	152,149.97	2,936	6,526.5	72	66.6	

Assay Class: High Sensitivity DNA Assay
 Data Path: C:\...ents and Settings\Bioanalyzer\2012-04-05\2012-04-05_002.xad

Created: 4/5/2012 1:02:04 PM
 Modified: 4/5/2012 1:48:12 PM

Electropherogram Summary Continued ...



Setpoint Deviations for sample 6 : CMW8 350bp (9cycle+3cycle)

Slope Threshold : 0.01 Width Threshold [s] : 0.01
 Height Threshold [FU] : 0

Overall Results for sample 6 : CMW8 350bp (9cycle+3cycle)

Number of peaks found: 87 Corr. Area 1: 802.1
 Noise: 0.5

Peak table for sample 6 : CMW8 350bp (9cycle+3cycle)

Peak	Size [bp]	Conc. [pg/μl]	Molarity [pmol/l]	Observations
1	35	125.00	5,411.3	Lower Marker
2	57	46,871.96	1,244,481.6	
3	161	25.97	245.0	
4	162	161.66	1,514.3	
5	176	51.54	443.9	
6	184	44.12	363.5	
7	194	12.82	100.4	
8	226	19.78	132.5	
9	248	52.20	319.6	
10	258	12.46	73.2	
11	264	40.65	233.6	
12	275	38.83	214.2	
13	279	31.25	169.6	
14	292	116.99	607.4	
15	305	62.86	311.9	
16	314	71.36	343.8	
17	321	48.91	230.8	
18	327	57.54	266.9	
19	336	89.15	401.6	
20	342	58.73	259.9	
21	347	18.28	79.8	

Assay Class: High Sensitivity DNA Assay
 Data Path: C:\...ents and Settings\Bioanalyzer\2012-04-05\2012-04-05_002.xad

Created: 4/5/2012 1:02:04 PM
 Modified: 4/5/2012 1:48:12 PM

Electropherogram Summary Continued ...

... Peak table for sample 6 : CMW8 350bp (9cycle+3cycle)

Peak	Size [bp]	Conc. [pg/μl]	Molarity [pmol/l]	Observations
22	351	63.68	274.5	
23	357	54.76	232.5	
24	362	152.48	638.6	
25	373	21.68	88.1	
26	376	65.27	263.2	
27	382	92.22	365.4	
28	398	194.32	740.5	
29	405	84.72	316.9	
30	415	86.33	315.1	
31	423	70.54	252.4	
32	429	91.92	324.4	
33	436	94.17	327.2	
34	447	106.24	360.1	
35	457	154.22	511.3	
36	472	161.09	517.0	
37	479	100.68	318.6	
38	494	194.73	597.4	
39	503	130.88	394.4	
40	516	162.06	476.3	
41	527	150.40	432.3	
42	553	273.44	749.7	
43	563	180.21	484.8	
44	577	153.10	402.1	
45	585	86.27	223.3	
46	595	130.93	333.4	
47	607	150.62	376.2	
48	619	156.47	382.9	
49	642	215.20	507.5	
50	658	193.79	446.2	
51	674	146.88	330.3	
52	689	229.11	503.6	
53	724	238.53	499.2	
54	761	249.58	496.9	
55	801	235.20	444.7	
56	855	425.73	754.2	
57	926	454.66	743.9	
58	977	303.80	471.4	
59	1,064	539.69	768.4	
60	1,164	251.93	328.0	
61	1,213	287.17	358.6	
62	1,249	57.32	69.5	
63	1,356	558.72	624.5	
64	1,483	536.22	547.7	
65	1,554	363.43	354.2	
66	1,626	265.52	247.5	
67	1,682	86.82	78.2	
68	1,704	347.72	309.2	
69	1,803	226.64	190.4	
70	1,867	347.65	282.1	
71	1,952	798.04	619.3	
72	2,281	335.16	222.6	
73	2,440	279.53	173.6	
74	2,572	592.66	349.2	

Assay Class: High Sensitivity DNA Assay
 Data Path: C:\...ents and Settings\Bioanalyzer\2012-04-05\2012-04-05_002.xad


Created: 4/5/2012 1:02:04 PM
 Modified: 4/5/2012 1:48:12 PM

Electropherogram Summary Continued ...

... Peak table for sample 6 : CMW8 350bp (9cycle+3cycle)

Peak	Size [bp]	Conc. [pg/µl]	Molarity [pmol/l]	Observations
75	2,889	354.03	185.7	
76	2,981	400.33	203.5	
77	3,630	377.77	157.7	
78	4,237	1,277.15	456.7	
79	6,786	515.97	115.2	
80	9,132	53.24	8.8	
81	9,631	57.76	9.1	
82	10,380	75.00	10.9	Upper Marker
83	11,129	0.00	0.0	
84	14,474	0.00	0.0	
85	15,023	0.00	0.0	
86	20,565	0.00	0.0	
87	22,013	0.00	0.0	
88	22,462	0.00	0.0	
89	24,409	0.00	0.0	

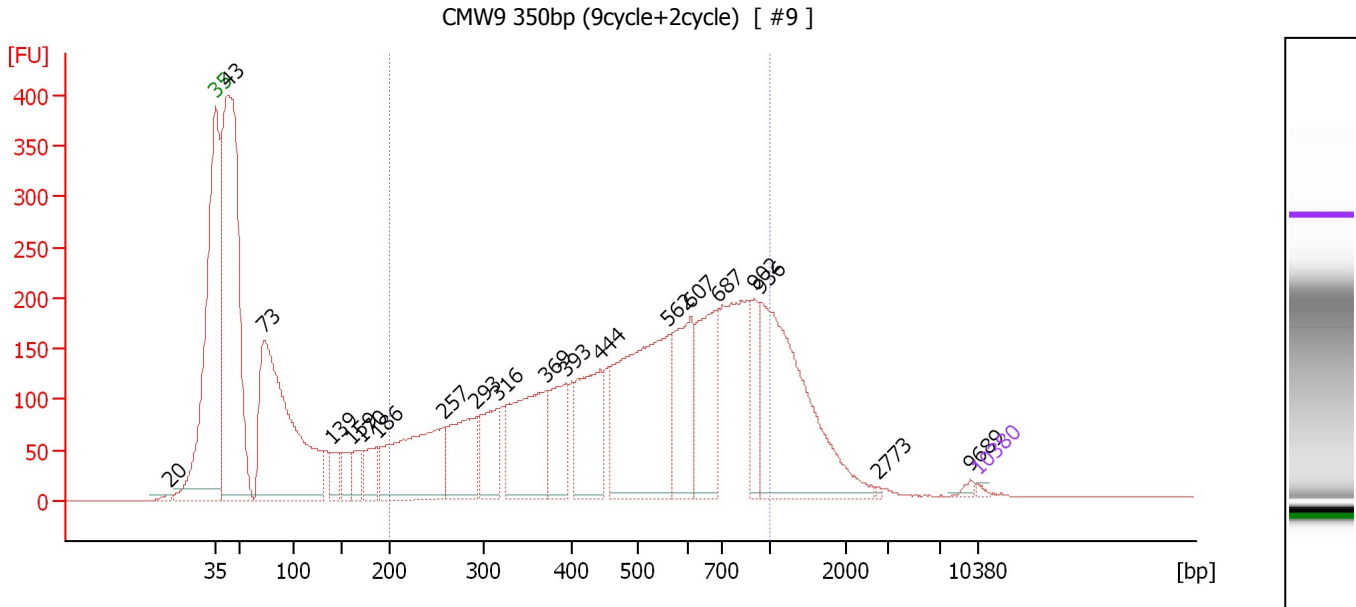
Region table for sample 6 : CMW8 350bp (9cycle+3cycle)

From [bp]	Molarity [pmol/l]	Average Size [bp]	Conc. [pg/µl]	To [bp]	Corr. Area	% of Total	Size distribution in CV [%]	Color
703	11,498.4	2,374	12,114.19	7,364	802.1	23	66.8	

Assay Class: High Sensitivity DNA Assay
 Data Path: C:\...ents and Settings\Bioanalyzer\2012-04-05\2012-04-05_002.xad

Created: 4/5/2012 1:02:04 PM
 Modified: 4/5/2012 1:48:12 PM

Electropherogram Summary Continued ...



Overall Results for sample 7 : CMW9 350bp (9cycle+2cycle)

Number of peaks found: 20 Corr. Area 1: 5,331.2
 Noise: 0.5

Peak table for sample 7 : CMW9 350bp (9cycle+2cycle)

Peak	Size [bp]	Conc. [pg/μl]	Molarity [pmol/l]	Observations
1	20	0.00	0.0	
2	35	125.00	5,411.3	Lower Marker
3	43	25,994.72	920,016.3	
4	73	17,614.52	366,696.7	
5	139	1,074.61	11,726.1	
6	159	1,066.45	10,168.3	
7	170	1,112.82	9,944.3	
8	186	1,564.69	12,721.4	
9	257	7,280.06	42,877.2	
10	293	4,137.80	21,432.1	
11	316	2,728.09	13,076.3	
12	369	5,877.89	24,104.7	
13	393	3,020.56	11,649.7	
14	444	4,432.31	15,127.5	
15	562	9,778.97	26,362.8	
16	607	4,013.40	10,013.7	
17	687	4,484.44	9,884.9	
18	902	1,724.00	2,894.8	
19	936	9,542.55	15,453.4	
20	2,773	55.73	30.5	
21	9,689	144.90	22.7	
22	10,380	75.00	10.9	Upper Marker

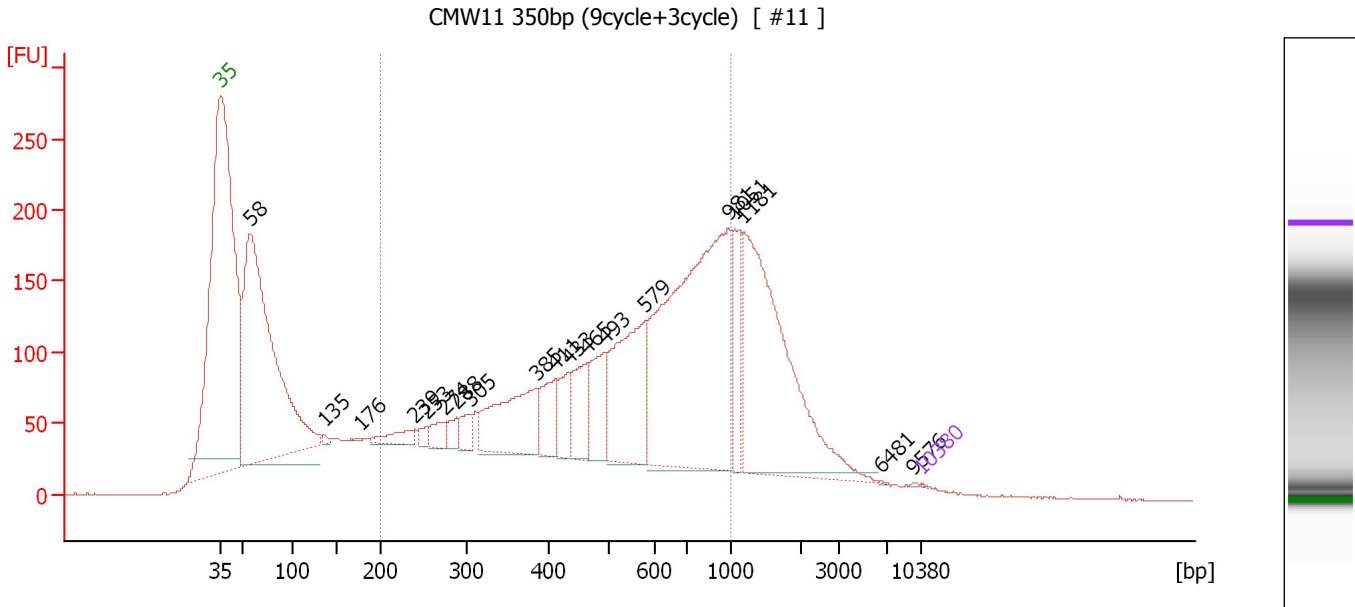
Region table for sample 7 : CMW9 350bp (9cycle+2cycle)

From [bp]	Molarity [pmol/l]	Average Size [bp]	Conc. [pg/μl]	To [bp]	Corr. Area	% of Total	Size distribution in CV [%]	Color
200	214,457.3	526	58,771.62	1,000	5,331.2	57	38.7	Blue

Assay Class: High Sensitivity DNA Assay
 Data Path: C:\...ents and Settings\Bioanalyzer\2012-04-05\2012-04-05_002.xad

Created: 4/5/2012 1:02:04 PM
 Modified: 4/5/2012 1:48:12 PM

Electropherogram Summary Continued ...



Setpoint Deviations for sample 8 : CMW11 350bp (9cycle+3cycle)

Height Threshold [FU] : 0

Overall Results for sample 8 : CMW11 350bp (9cycle+3cycle)

Number of peaks found: 19 Corr. Area 1: 3,785.0
 Noise: 0.3


Peak table for sample 8 : CMW11 350bp (9cycle+3cycle)

Peak	Size [bp]	Conc. [pg/μl]	Molarity [pmol/l]	Observations
1	35	125.00	5,411.3	Lower Marker
2	58	121,007.79	3,183,716.3	
3	135	809.28	9,053.9	
4	176	276.13	2,376.1	
5	239	4,157.80	26,316.5	
6	253	1,736.93	10,402.7	
7	274	3,818.46	21,115.1	
8	288	2,932.39	15,448.5	
9	305	3,766.21	18,698.6	
10	385	21,894.87	86,093.8	
11	411	9,056.21	33,367.5	
12	433	6,855.68	23,999.6	
13	465	10,632.24	34,628.9	
14	493	11,463.91	35,226.0	
15	579	27,437.65	71,820.8	
16	981	76,585.47	118,304.2	
17	1,051	10,524.93	15,170.8	
18	1,181	54,954.95	70,512.4	
19	6,481	47.89	11.2	
20	9,576	93.40	14.8	
21	10,380	75.00	10.9	Upper Marker

Assay Class: High Sensitivity DNA Assay
Data Path: C:\...ents and Settings\Bioanalyzer\2012-04-05\2012-04-05_002.xad

Created: 4/5/2012 1:02:04 PM
Modified: 4/5/2012 1:48:12 PM

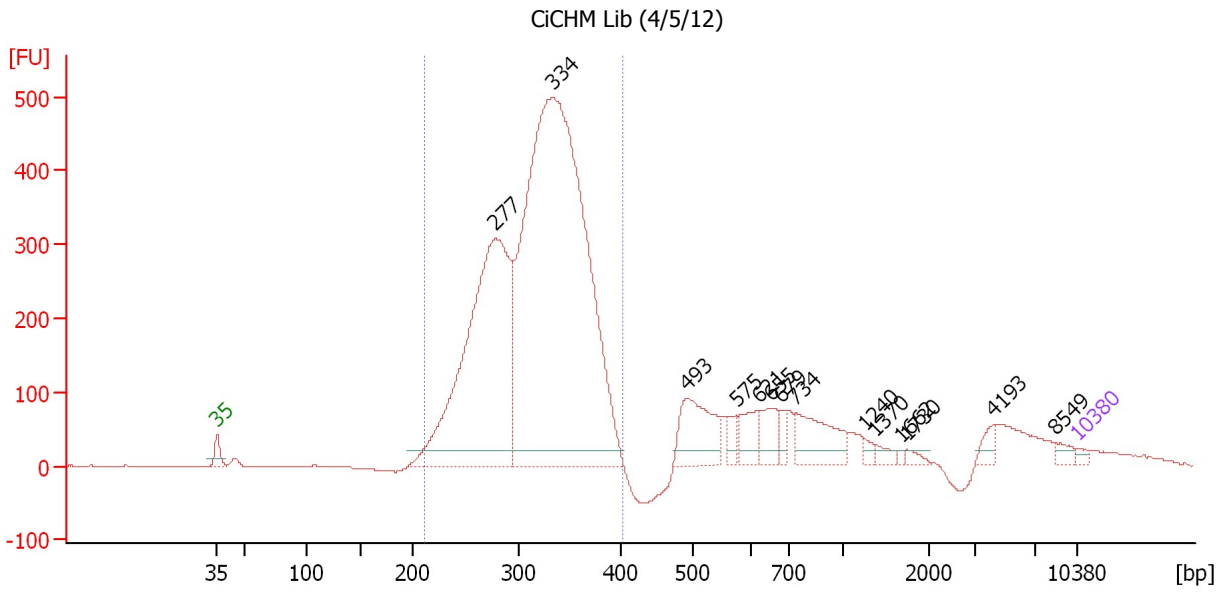
Electropherogram Summary Continued ...**... Region table for sample 8 : CMW11 350bp (9cycle+3cycle)**

From [bp]	Molarity [pmol/l]	Average Size [bp]	Conc. [pg/μl]	To [bp]	Corr. Area	% of Total	Size distribution in CV [%]	Co lor
200	1,058,720.4	547	298,626.66	1,000	3,785.0	55	38.7	

Assay Class: High Sensitivity DNA Assay
 Data Path: C:\...ents and Settings\Bioanalyzer\2012-04-05\2012-04-05_002.xad

Created: 4/5/2012 1:02:04 PM
 Modified: 4/5/2012 1:48:12 PM

Electropherogram Summary Continued ...



Setpoint Deviations for sample 9 : CiCHM Lib (4/5/12)

Height Threshold [FU] : 20

Overall Results for sample 9 : CiCHM Lib (4/5/12)

Number of peaks found: 14 Corr. Area 1: 6,390.7
 Noise: 0.3

Peak table for sample 9 : CiCHM Lib (4/5/12)

Peak	Size [bp]	Conc. [pg/μl]	Molarity [pmol/l]	Observations
1	35	125.00	5,411.3	Lower Marker
2	277	12,733.63	69,587.6	
3	334	25,120.66	114,033.4	
4	493	1,906.64	5,860.8	
5	575	328.91	866.4	
6	621	677.48	1,653.9	
7	655	705.63	1,633.1	
8	679	282.04	629.2	
9	734	1,422.13	2,933.9	
10	1,240	130.24	159.1	
11	1,370	176.85	195.5	
12	1,662	51.08	46.6	
13	1,730	127.37	111.5	
14	4,193	242.80	87.7	
15	8,549	161.63	28.6	
16	10,380	75.00	10.9	Upper Marker

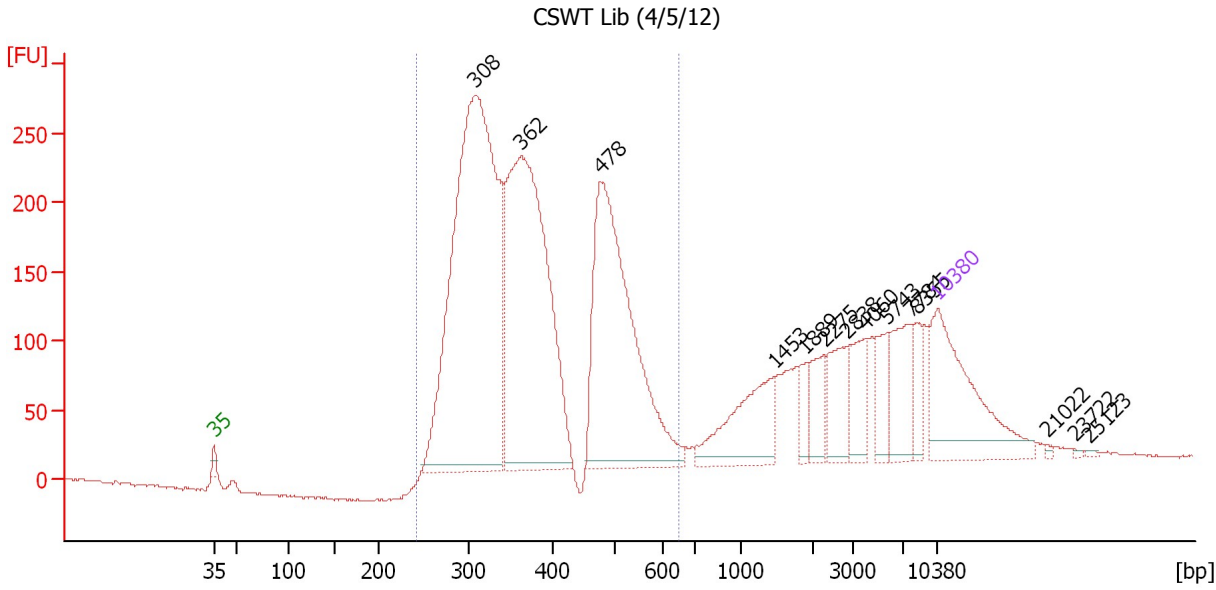
Region table for sample 9 : CiCHM Lib (4/5/12)

From [bp]	Molarity [pmol/l]	Average Size [bp]	Conc. [pg/μl]	To [bp]	Corr. Area	% of Total	Size distribution in CV [%]	Color
210	184,845.7	316	37,679.33	403	6,390.7	79	13.0	Blue

Assay Class: High Sensitivity DNA Assay
 Data Path: C:\...ents and Settings\Bioanalyzer\2012-04-05\2012-04-05_002.xad

Created: 4/5/2012 1:02:04 PM
 Modified: 4/5/2012 1:48:12 PM

Electropherogram Summary Continued ...



Overall Results for sample 10 : CSWT Lib (4/5/12)

Number of peaks found: 14 Corr. Area 1: 4,288.5
 Noise: 0.8

Peak table for sample 10 : CSWT Lib (4/5/12)

Peak	Size [bp]	Conc. [pg/μl]	Molarity [pmol/l]	Observations
1	35	125.00	5,411.3	Lower Marker
2	308	501.72	2,467.4	
3	362	347.14	1,454.1	
4	478	257.10	815.2	
5	1,453	57.27	59.7	
6	1,889	12.20	9.8	
7	2,275	21.02	14.0	
8	2,838	29.33	15.7	
9	4,060	25.82	9.6	
10	5,743	22.35	5.9	
11	7,784	33.14	6.5	
12	8,355	14.35	2.6	
13	10,380	75.00	10.9	Upper Marker
14	21,022	0.00	0.0	
15	23,722	0.00	0.0	
16	25,123	0.00	0.0	

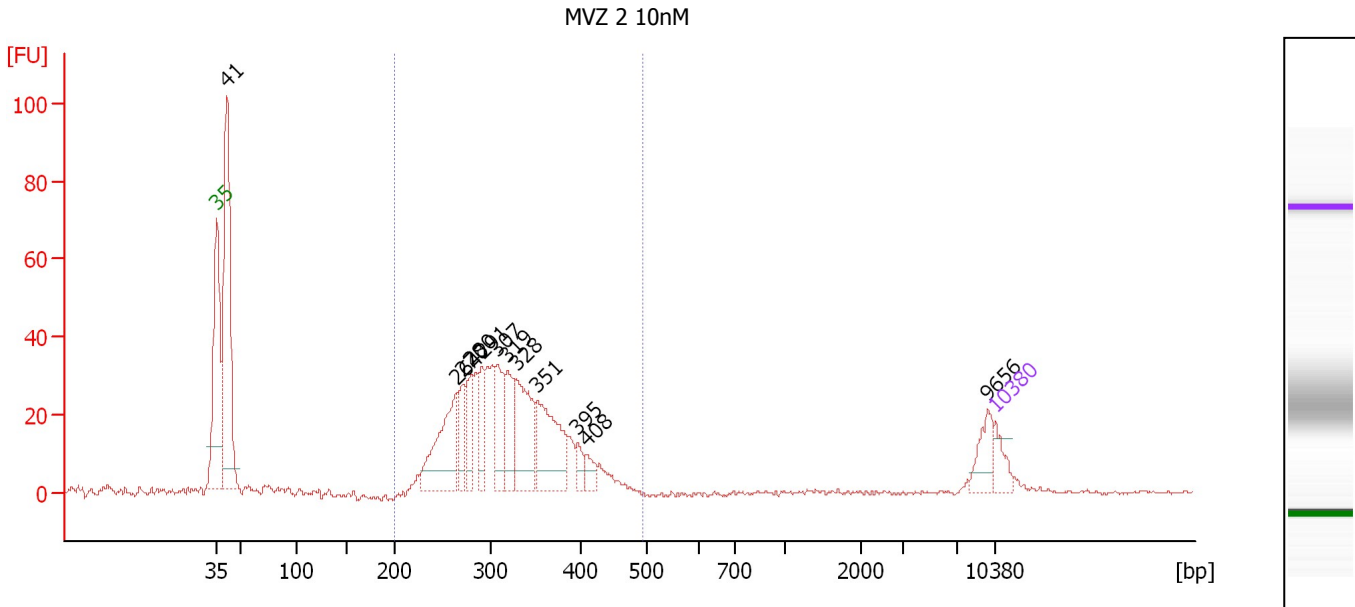
Region table for sample 10 : CSWT Lib (4/5/12)

From [bp]	Molarity [pmol/l]	Average Size [bp]	Conc. [pg/μl]	To [bp]	Corr. Area	% of Total	Size distribution in CV [%]	Color
242	4,633.5	383	1,096.84	650	4,288.5	74	23.0	Blue

Assay Class: High Sensitivity DNA Assay
 Data Path: C:\...ents and Settings\Bioanalyzer\2012-04-05\2012-04-05_002.xad

Created: 4/5/2012 1:02:04 PM
 Modified: 4/5/2012 1:48:12 PM

Electropherogram Summary Continued ...



Overall Results for sample 11 : MVZ 2 10nM

Number of peaks found: 12 Corr. Area 1: 499.4
 Noise: 0.6

Peak table for sample 11 : MVZ 2 10nM

Peak	Size [bp]	Conc. [pg/μl]	Molarity [pmol/l]	Observations
1	35	125.00	5,411.3	Lower Marker
2	41	1,526.84	56,000.2	
3	264	558.85	3,205.3	
4	270	186.75	1,046.8	
5	280	215.11	1,165.1	
6	291	210.62	1,095.0	
7	307	265.62	1,309.2	
8	319	261.36	1,243.2	
9	328	452.03	2,088.6	
10	351	506.80	2,185.4	
11	395	66.57	255.1	
12	408	74.87	277.9	
13	9,656	120.98	19.0	
14	10,380	75.00	10.9	Upper Marker

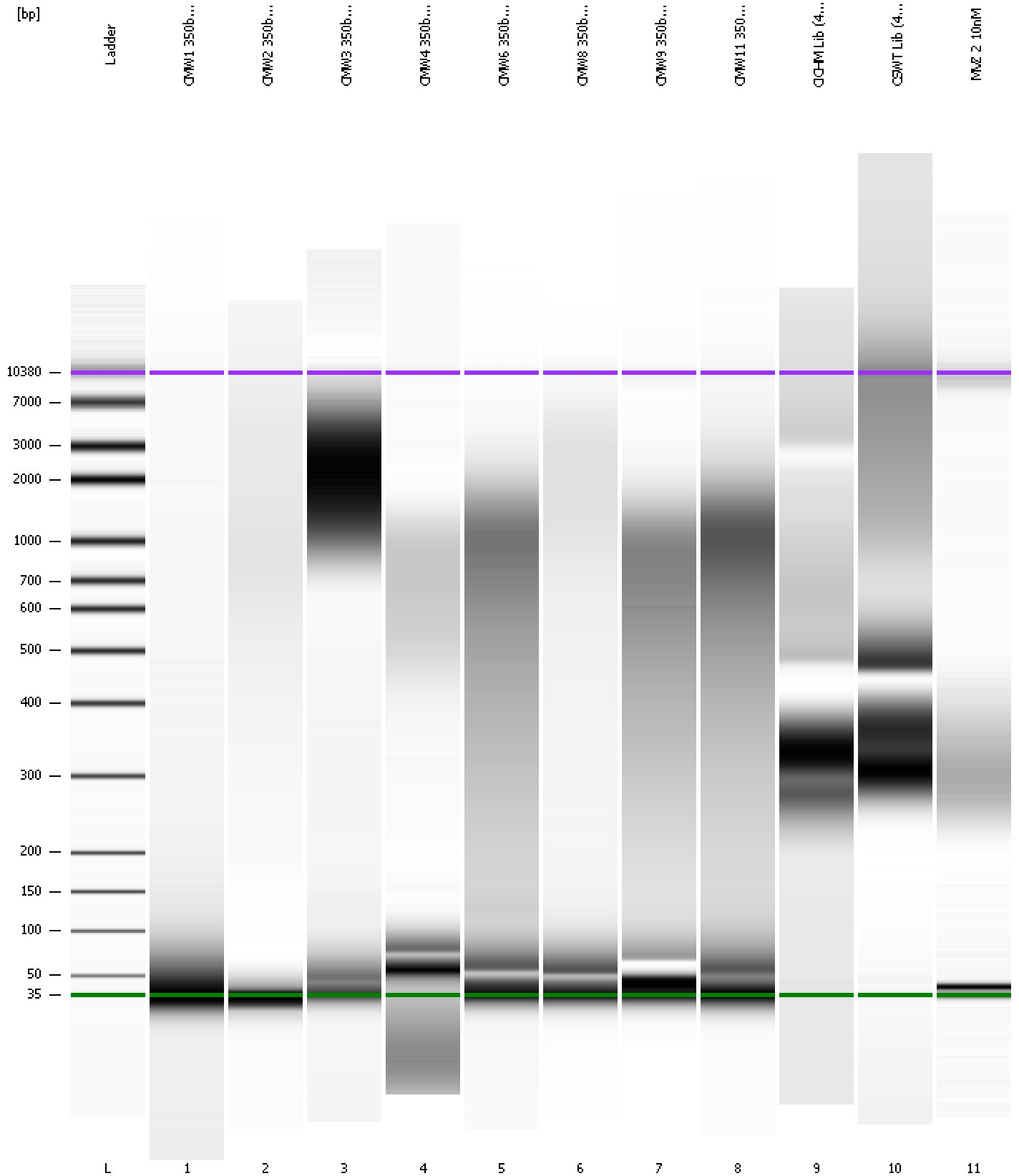
Region table for sample 11 : MVZ 2 10nM

From [bp]	Molarity [pmol/l]	Average Size [bp]	Conc. [pg/μl]	To [bp]	Corr. Area	% of Total	Size distribution in CV [%]	Color
200	17,669.4	319	3,600.27	492	499.4	70	15.9	Blue

Assay Class: High Sensitivity DNA Assay
Data Path: C:\...ents and Settings\Bioanalyzer\2012-04-05\2012-04-05_002.xad

Created: 4/5/2012 1:02:04 PM
Modified: 4/5/2012 1:48:12 PM

Gel Image



Assay Class: High Sensitivity DNA Assay
 Data Path: C:\...ents and Settings\Bioanalyzer\2012-04-05\2012-04-05_002.xad

Created: 4/5/2012 1:02:04 PM
 Modified: 4/5/2012 1:48:12 PM

Run Logbook

Description	Number	Source	Category	Sub Category	Time	Time Zone	User	Host
Run ended on port 1 (Number of wells acquired: 12)		Instrument	Run		4/5/2012 1:43:23 PM	(GMT --07:00) Pacific Standard Time	UC Davis	D8XSMGH1
Run started on port 1 (File: C:\Documents and Settings\Bioanalyzer\2012-04-05\2012-04-05_002.xad)		Instrument	Run		4/5/2012 1:02:09 PM	(GMT --07:00) Pacific Standard Time	UC Davis	D8XSMGH1
Product Number : G2938B		Instrument	Run		4/5/2012 1:02:09 PM	(GMT --07:00) Pacific Standard Time	UC Davis	D8XSMGH1
Name :		Instrument	Run		4/5/2012 1:02:09 PM	(GMT --07:00) Pacific Standard Time	UC Davis	D8XSMGH1
Vendor : Agilent Technologies		Instrument	Run		4/5/2012 1:02:09 PM	(GMT --07:00) Pacific Standard Time	UC Davis	D8XSMGH1
Serial# : DE13701086		Instrument	Run		4/5/2012 1:02:09 PM	(GMT --07:00) Pacific Standard Time	UC Davis	D8XSMGH1
Firmware : C.01.069		Instrument	Run		4/5/2012 1:02:09 PM	(GMT --07:00) Pacific Standard Time	UC Davis	D8XSMGH1
Cartridge : Electrode		Instrument	Run		4/5/2012 1:02:09 PM	(GMT --07:00) Pacific Standard Time	UC Davis	D8XSMGH1