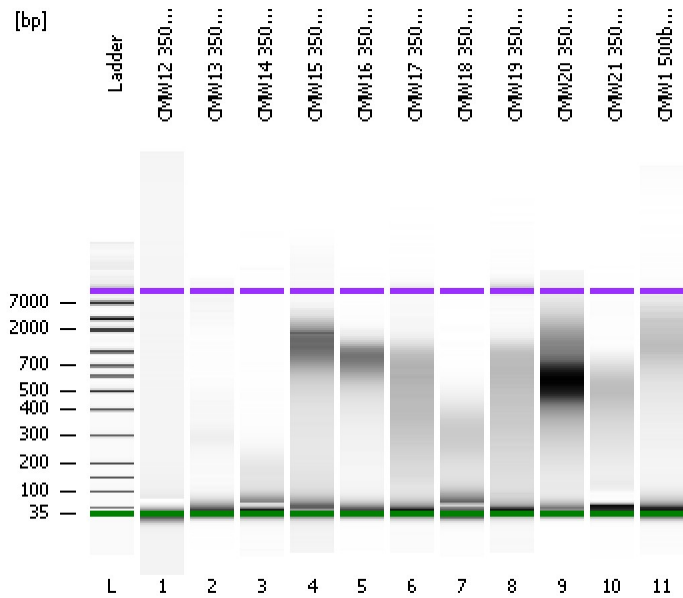


Assay Class: High Sensitivity DNA Assay  
Data Path: C:\...ents and Settings\Bioanalyzer\2012-04-05\2012-04-05\_003.xad

Created: 4/5/2012 2:05:11 PM  
Modified: 4/5/2012 2:54:23 PM

**Electrophoresis File Run Summary**



Instrument Information:

Instrument Name: DE13701086      Firmware: C.01.069  
Serial#: DE13701086      Type: G2938B

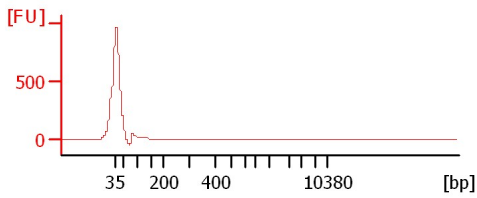
Assay Information:

Assay Origin Path: C:\Program Files\Agilent\2100 bioanalyzer\2100 expert\assays\dsDNA\High Sensitivity DNA.xsy  
Assay Class: High Sensitivity DNA Assay  
Version: 1.03  
Assay Comments: Copyright © 2003-2010 Agilent Technologies

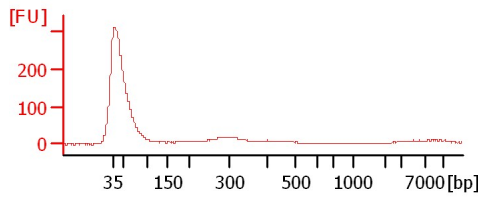
Chip Information:

Chip Lot #:   
Reagent Kit Lot #:   
Chip Comments:

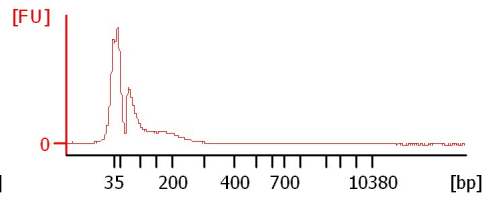
**CMW12 350bp Soni**



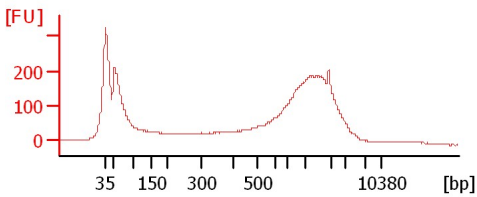
**CMW13 350bp Soni**



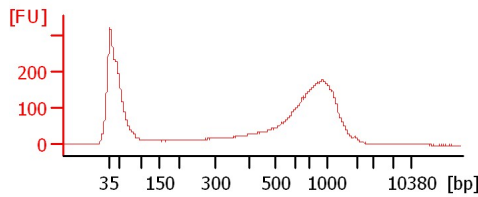
**CMW14 350bp Soni**



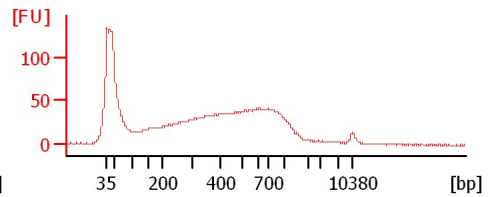
**CMW15 350bp Soni**



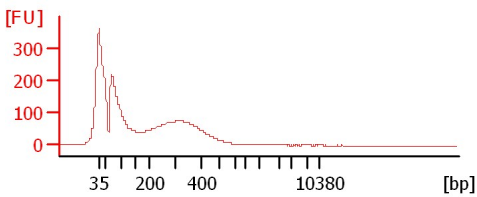
**CMW16 350bp Soni**



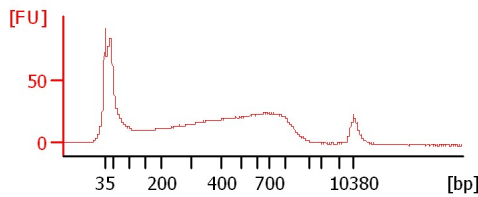
**CMW17 350bp Soni**



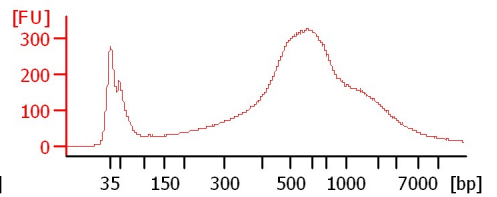
**CMW18 350bp Soni**



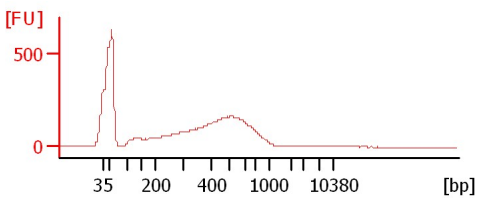
**CMW19 350bp Soni**



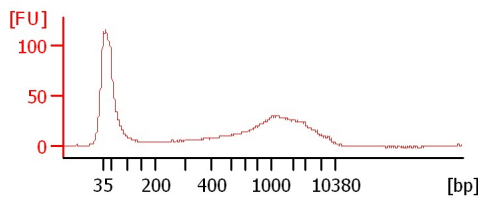
**CMW20 350bp Soni**



**CMW21 350bp Soni**



**CMW1 500bp Soni**



Assay Class: High Sensitivity DNA Assay  
Data Path: C:\...ents and Settings\Bioanalyzer\2012-04-05\2012-04-05\_003.xad

Created: 4/5/2012 2:05:11 PM  
Modified: 4/5/2012 2:54:23 PM

**Electrophoresis File Run Summary (Chip Summary)**

Sample Name	Sample Comment	Rest. Digest	Status	Observation	Result Label	Result Color
CMW12 350bp Soni		<input type="checkbox"/>	✓			
CMW13 350bp Soni		<input type="checkbox"/>	✓			
CMW14 350bp Soni		<input type="checkbox"/>	✓			
CMW15 350bp Soni		<input type="checkbox"/>	✓			
CMW16 350bp Soni		<input type="checkbox"/>	✓			
CMW17 350bp Soni		<input type="checkbox"/>	✓			
CMW18 350bp Soni		<input type="checkbox"/>	✓			
CMW19 350bp Soni		<input type="checkbox"/>	✓			
CMW20 350bp Soni		<input type="checkbox"/>	✓			
CMW21 350bp Soni		<input type="checkbox"/>	✓			
CMW1 500bp Soni		<input type="checkbox"/>	✓			
Ladder		<input type="checkbox"/>	✓			

**Chip Lot #**

**Reagent Kit Lot #**

**Chip Comments :**

Assay Class: High Sensitivity DNA Assay  
 Data Path: C:\...ents and Settings\Bioanalyzer\2012-04-05\2012-04-05\_003.xad

Created: 4/5/2012 2:05:11 PM  
 Modified: 4/5/2012 2:54:23 PM

**Electrophoresis Assay Details**

**General Analysis Settings**

Number of Available Sample and Ladder Wells (Max.) : 12  
 Minimum Visible Range [s] : 32  
 Maximum Visible Range [s] : 138  
 Start Analysis Time Range [s] : 33  
 End Analysis Time Range [s] : 137.5  
 Ladder Concentration [pg/μl] : 1950  
 Uses Standard Area for Ladder Fragments  
 Lower Marker Concentration [pg/μl] : 125  
 Upper Marker Concentration [pg/μl] : 75  
 Used Upper Marker for Quantitation  
 Standard Curve Fit is Point to Point  
 Show Data Aligned to Lower and Upper Marker

**Integrator Settings**

Integration Start Time [s] : 33.05  
 Integration End Time [s] : 137  
 Slope Threshold : 0.8  
 Height Threshold [FU] : 5  
 Area Threshold : 0.1  
 Width Threshold [s] : 0.6  
 Baseline Plateau [s] : 0.5

**Filter Settings**

Filter Width [s] : 0.5  
 Polynomial Order : 4

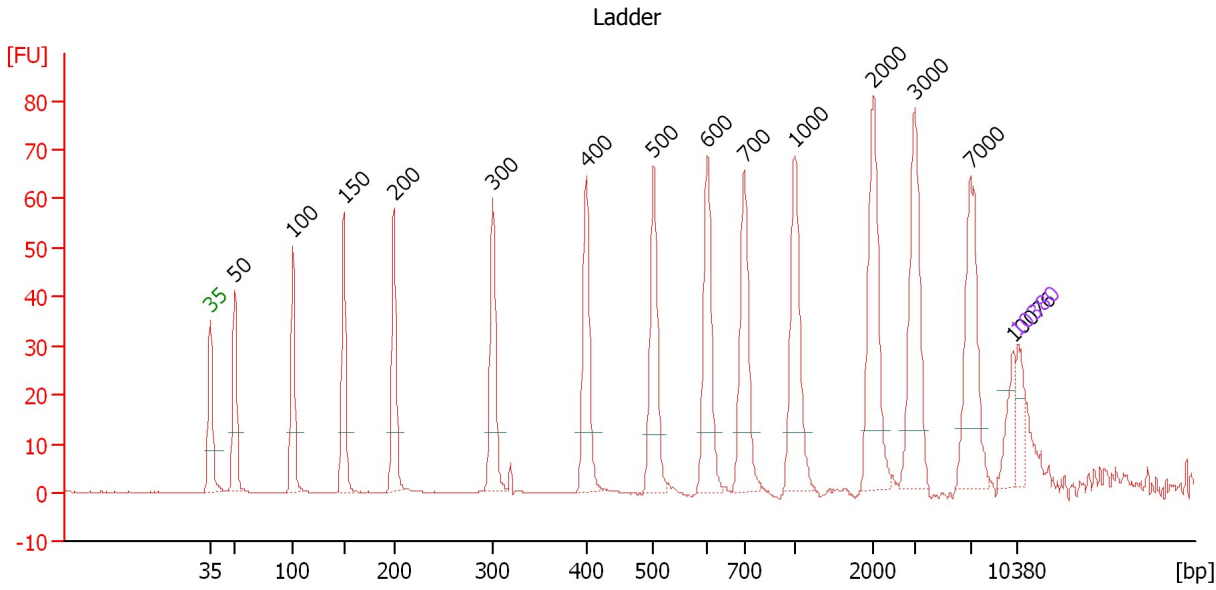
**Ladder**

Ladder Peak	Size	Area
1	35	160
2	50	210
3	100	208
4	150	221
5	200	242
6	300	270
7	400	305
8	500	306
9	600	336
10	700	321
11	1000	366
12	2000	413
13	3000	411
14	7000	400
15	10380	214

Assay Class: High Sensitivity DNA Assay  
 Data Path: C:\...ents and Settings\Bioanalyzer\2012-04-05\2012-04-05\_003.xad

Created: 4/5/2012 2:05:11 PM  
 Modified: 4/5/2012 2:54:23 PM

**Electropherogram Summary**



**Overall Results for Ladder**

Noise: 0.1

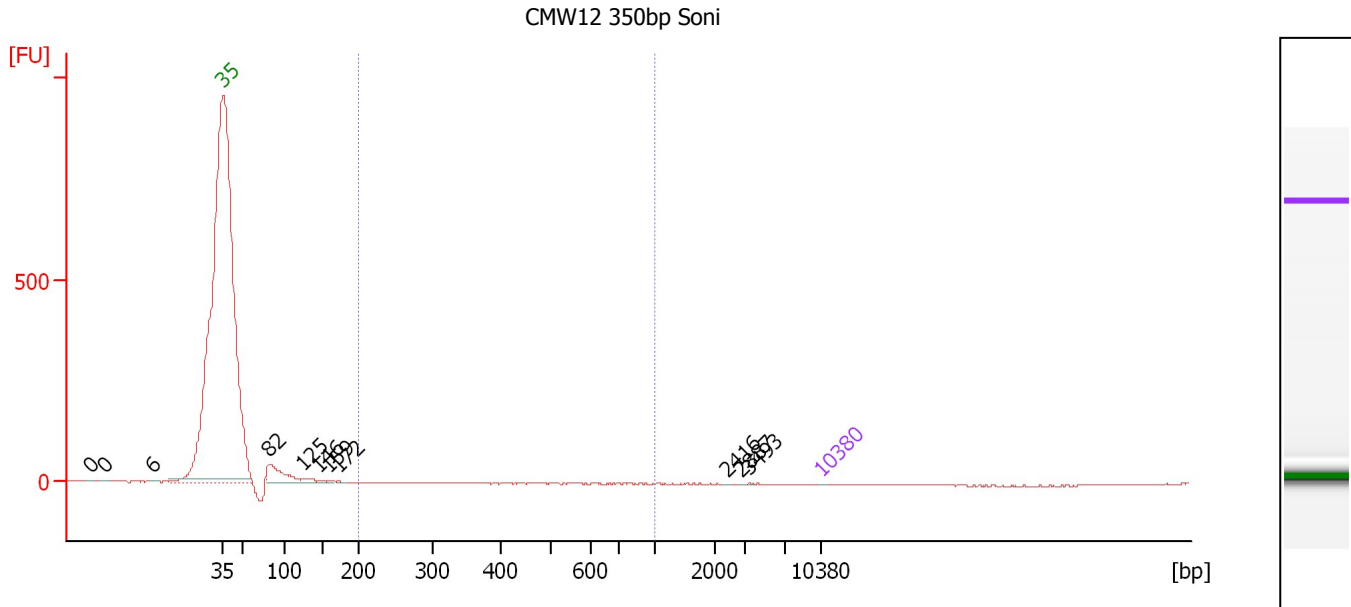
**Peak table for Ladder**

Peak	Size [bp]	Conc. [pg/μl]	Molarity [pmol/l]	Observations
1	35	125.00	5,411.3	Lower Marker
2	50	150.00	4,545.5	Ladder Peak
3	100	150.00	2,272.7	Ladder Peak
4	150	150.00	1,515.2	Ladder Peak
5	200	150.00	1,136.4	Ladder Peak
6	300	150.00	757.6	Ladder Peak
7	400	150.00	568.2	Ladder Peak
8	500	150.00	454.5	Ladder Peak
9	600	150.00	378.8	Ladder Peak
10	700	150.00	324.7	Ladder Peak
11	1,000	150.00	227.3	Ladder Peak
12	2,000	150.00	113.6	Ladder Peak
13	3,000	150.00	75.8	Ladder Peak
14	7,000	150.00	32.5	Ladder Peak
15	10,076	0.00	0.0	
16	10,380	75.00	10.9	Upper Marker

Assay Class: High Sensitivity DNA Assay  
 Data Path: C:\...ents and Settings\Bioanalyzer\2012-04-05\2012-04-05\_003.xad

Created: 4/5/2012 2:05:11 PM  
 Modified: 4/5/2012 2:54:23 PM

**Electropherogram Summary Continued ...**



**Setpoint Deviations for sample 1 : CMW12 350bp Soni**

Height Threshold [FU] : 0.1

**Overall Results for sample 1 : CMW12 350bp Soni**

Number of peaks found: 11                      Corr. Area 1: 0.0  
 Noise: 0.4

**Peak table for sample 1 : CMW12 350bp Soni**

Peak	Size [bp]	Conc. [pg/μl]	Molarity [pmol/l]	Observations
1	0	0.00	0.0	
2	0	0.00	0.0	
3	6	0.00	0.0	
4	35	125.00	5,411.3	Lower Marker
5	82	56,191.00	1,035,261.4	
6	125	8,762.93	106,355.8	
7	146	2,701.66	28,066.7	
8	159	1,848.50	17,655.8	
9	172	854.67	7,550.5	
10	2,416	46.69	29.3	
11	2,887	72.40	38.0	
12	3,493	238.91	103.6	
13	10,380	75.00	10.9	Upper Marker

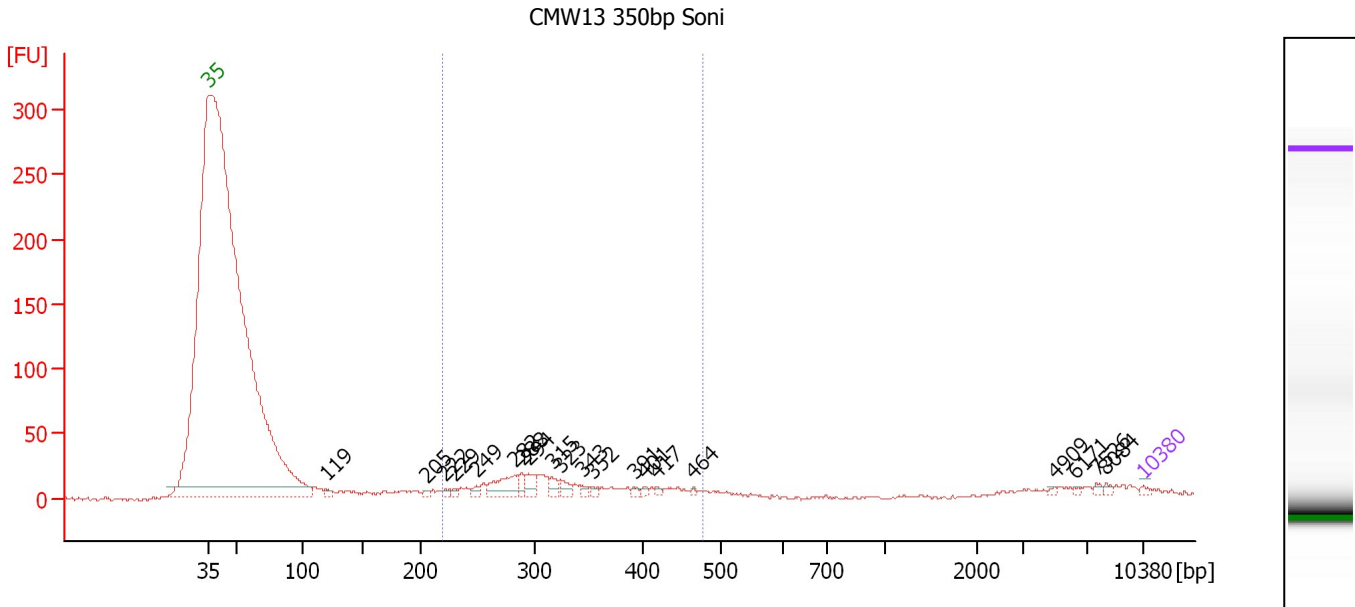
**Region table for sample 1 : CMW12 350bp Soni**

From [bp]	Molarity [pmol/l]	Average Size [bp]	Conc. [pg/μl]	To [bp]	Corr. Area	% of Total	Size distribution in CV [%]	Color
200	0.0	0	0.00	1,000	0.0	0	0.0	Blue

Assay Class: High Sensitivity DNA Assay  
 Data Path: C:\...ents and Settings\Bioanalyzer\2012-04-05\2012-04-05\_003.xad

Created: 4/5/2012 2:05:11 PM  
 Modified: 4/5/2012 2:54:23 PM

**Electropherogram Summary Continued ...**



**Overall Results for sample 2 : CMW13 350bp Soni**

Number of peaks found: 20                      Corr. Area 1: 306.3  
 Noise: 1.2

**Peak table for sample 2 : CMW13 350bp Soni**

Peak	Size [bp]	Conc. [pg/μl]	Molarity [pmol/l]	Observations
1	35	125.00	5,411.3	Lower Marker
2	119	250.96	3,202.0	
3	205	181.87	1,344.4	
4	222	188.54	1,288.6	
5	229	172.83	1,142.9	
6	249	291.58	1,773.7	
7	282	1,577.53	8,488.5	
8	288	486.30	2,557.7	
9	294	649.91	3,348.0	
10	315	497.55	2,393.5	
11	323	451.28	2,114.5	
12	343	243.09	1,073.5	
13	352	183.69	789.6	
14	391	158.24	612.5	
15	401	159.37	601.9	
16	417	126.71	460.5	
17	464	97.85	319.4	
18	4,909	71.67	22.1	
19	6,171	65.91	16.2	
20	7,526	102.64	20.7	
21	8,084	104.16	19.5	
22	10,380	75.00	10.9	Upper Marker

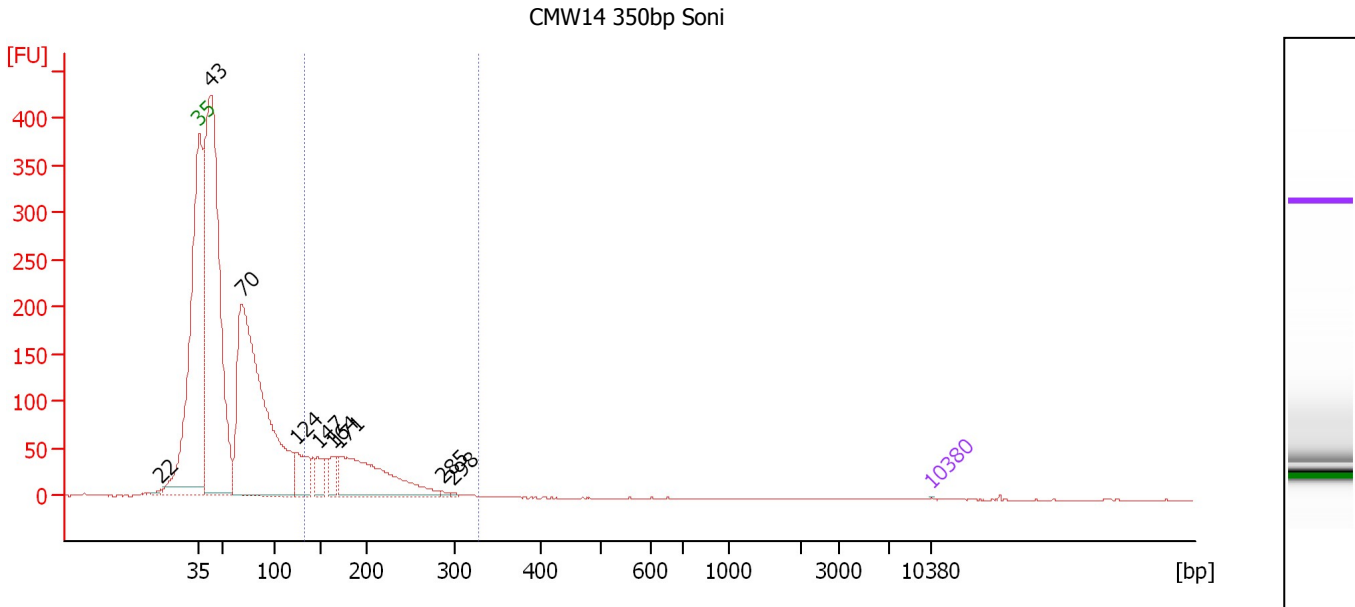
**Region table for sample 2 : CMW13 350bp Soni**

From [bp]	Molarity [pmol/l]	Average Size [bp]	Conc. [pg/μl]	To [bp]	Corr. Area	% of Total	Size distribution in CV [%]	Color
220	45,006.2	323	9,134.38	477	306.3	60	19.4	Blue

Assay Class: High Sensitivity DNA Assay  
 Data Path: C:\...ents and Settings\Bioanalyzer\2012-04-05\2012-04-05\_003.xad

Created: 4/5/2012 2:05:11 PM  
 Modified: 4/5/2012 2:54:23 PM

**Electropherogram Summary Continued ...**



**Setpoint Deviations for sample 3 : CMW14 350bp Soni**

Height Threshold [FU] : 2

**Overall Results for sample 3 : CMW14 350bp Soni**

Number of peaks found: 9                      Corr. Area 1: 631.0  
 Noise: 0.3

**Peak table for sample 3 : CMW14 350bp Soni**

Peak	Size [bp]	Conc. [pg/μl]	Molarity [pmol/l]	Observations
1	22	0.00	0.0	
2	35	125.00	5,411.3	Lower Marker
3	43	438,474.34	15,482,273.0	
4	70	349,109.63	7,606,001.5	
5	124	31,331.95	381,864.4	
6	147	16,220.54	166,857.4	
7	164	12,097.27	111,998.1	
8	171	99,904.85	883,755.9	
9	285	1,488.88	7,904.5	
10	298	842.21	4,284.4	
11	10,380	75.00	10.9	Upper Marker

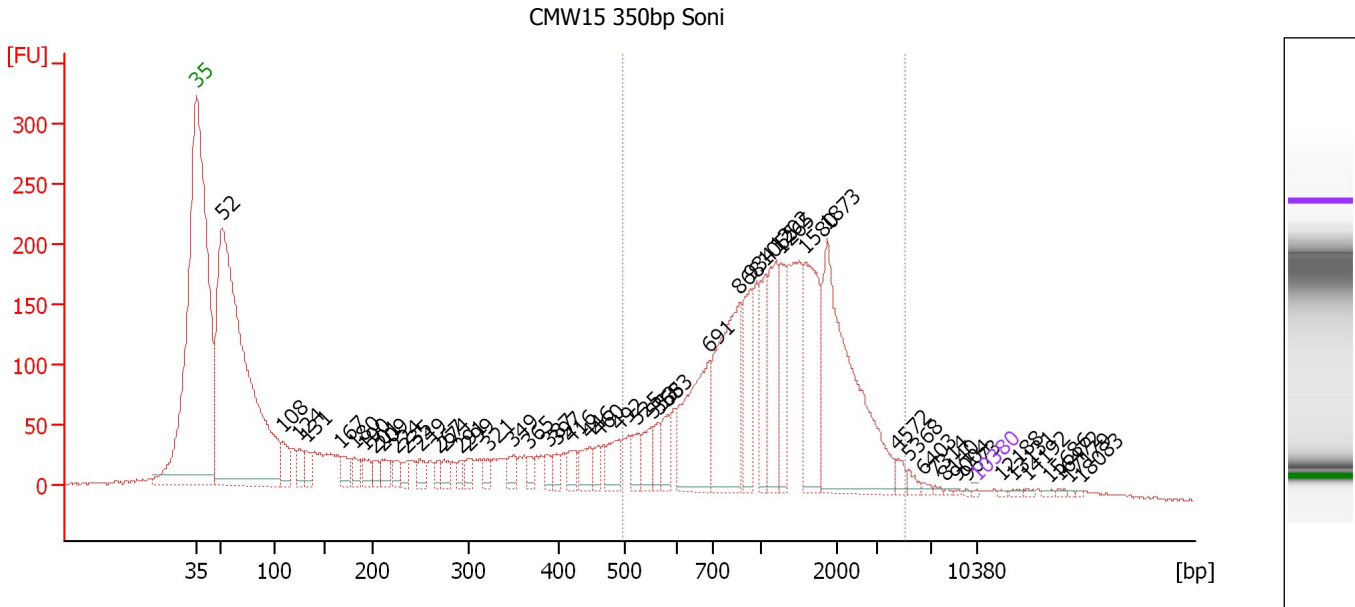
**Region table for sample 3 : CMW14 350bp Soni**

From [bp]	Molarity [pmol/l]	Average Size [bp]	Conc. [pg/μl]	To [bp]	Corr. Area	% of Total	Size distribution in CV [%]	Color
132	1,303,643.4	191	155,719.36	328	631.0	18	21.5	Blue

Assay Class: High Sensitivity DNA Assay  
 Data Path: C:\...ents and Settings\Bioanalyzer\2012-04-05\2012-04-05\_003.xad

Created: 4/5/2012 2:05:11 PM  
 Modified: 4/5/2012 2:54:23 PM

**Electropherogram Summary Continued ...**



**Overall Results for sample 4 : CMW15 350bp Soni**

Number of peaks found: 51                      Corr. Area 1: 3,112.6  
 Noise: 1.2

**Peak table for sample 4 : CMW15 350bp Soni**

Peak	Size [bp]	Conc. [pg/μl]	Molarity [pmol/l]	Observations
1	35	125.00	5,411.3	Lower Marker
2	52	69,742.16	2,025,115.3	
3	108	2,502.55	35,223.9	
4	124	1,706.29	20,879.9	
5	131	1,838.72	21,208.0	
6	167	1,607.87	14,610.0	
7	180	1,377.16	11,595.0	
8	190	1,344.44	10,697.8	
9	201	1,120.83	8,453.8	
10	209	1,290.50	9,345.3	
11	224	1,127.68	7,638.1	
12	235	1,024.20	6,608.5	
13	249	1,335.17	8,133.2	
14	267	883.02	5,009.1	
15	274	1,085.18	6,005.8	
16	291	803.12	4,181.4	
17	299	1,167.12	5,907.1	
18	321	1,003.00	4,731.3	
19	349	1,216.15	5,279.9	
20	365	807.69	3,353.1	
21	387	881.23	3,446.3	
22	397	941.93	3,590.5	
23	416	1,334.98	4,859.7	
24	446	1,944.97	6,610.6	
25	460	1,023.15	3,371.9	
26	492	2,224.57	6,853.8	




Assay Class: High Sensitivity DNA Assay  
 Data Path: C:\...ents and Settings\Bioanalyzer\2012-04-05\2012-04-05\_003.xad


Created: 4/5/2012 2:05:11 PM  
 Modified: 4/5/2012 2:54:23 PM

**Electropherogram Summary Continued ...**

**... Peak table for sample 4 : CMW15 350bp Soni**

Peak	Size [bp]	Conc. [pg/µl]	Molarity [pmol/l]	Observations
27	525	1,510.35	4,362.3	
28	553	2,019.61	5,530.7	
29	565	1,294.41	3,474.0	
30	583	1,913.46	4,973.0	
31	691	9,754.52	21,396.0	
32	868	11,865.69	20,721.3	
33	934	4,865.68	7,895.9	
34	1,055	4,007.54	5,753.4	
35	1,202	5,662.74	7,136.7	
36	1,265	3,334.78	3,993.8	
37	1,580	8,022.64	7,694.3	
38	1,873	16,783.94	13,573.8	
39	4,572	632.78	209.7	
40	5,368	475.38	134.2	
41	6,403	213.75	50.6	
42	7,314	132.34	27.4	
43	8,140	95.84	17.8	
44	9,004	73.71	12.4	
45	9,673	69.26	10.8	
46	 10,380	75.00	10.9	Upper Marker
47	12,188	0.00	0.0	
48	13,131	0.00	0.0	
49	14,192	0.00	0.0	
50	15,686	0.00	0.0	
51	16,472	0.00	0.0	
52	17,179	0.00	0.0	
53	18,083	0.00	0.0	

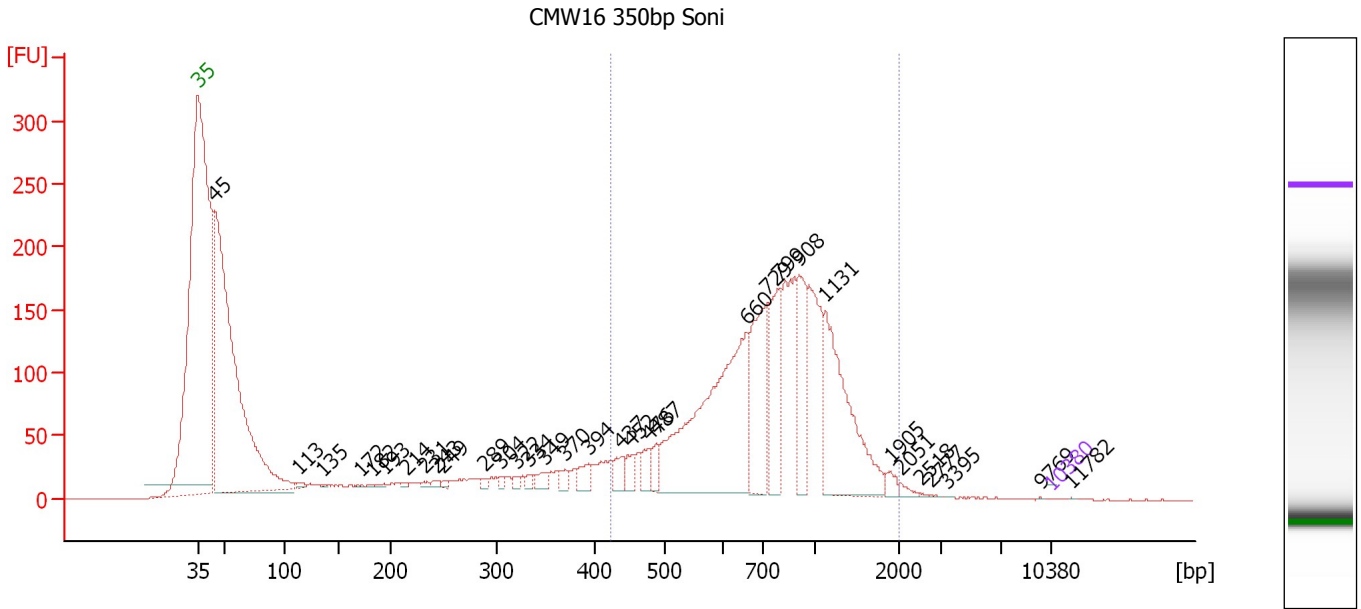
**Region table for sample 4 : CMW15 350bp Soni**

From [bp]	Molarity [pmol/l]	Average Size [bp]	Conc. [pg/µl]	To [bp]	Corr. Area	% of Total	Size distribution in CV [%]	Color
497	129,000.9	1,371	86,220.46	5,087	3,112.6	52	55.0	

Assay Class: High Sensitivity DNA Assay  
 Data Path: C:\...ents and Settings\Bioanalyzer\2012-04-05\2012-04-05\_003.xad

Created: 4/5/2012 2:05:11 PM  
 Modified: 4/5/2012 2:54:23 PM

**Electropherogram Summary Continued ...**



**Setpoint Deviations for sample 5 : CMW16 350bp Soni**

Height Threshold [FU] : 0.1

**Overall Results for sample 5 : CMW16 350bp Soni**

Number of peaks found: 33                      Corr. Area 1: 2,490.7  
 Noise: 0.5

**Peak table for sample 5 : CMW16 350bp Soni**


Peak	Size [bp]	Conc. [pg/μl]	Molarity [pmol/l]	Observations
1	35	125.00	5,411.3	Lower Marker
2	45	559,888.44	18,901,820.0	
3	113	3,332.51	44,685.1	
4	135	543.21	6,088.1	
5	172	424.11	3,743.9	
6	182	585.80	4,884.5	
7	193	1,114.19	8,733.7	
8	214	1,418.82	10,041.0	
9	231	2,114.87	13,847.5	
10	243	2,922.51	18,214.1	
11	249	2,655.12	16,142.0	
12	289	2,880.31	15,104.6	
13	304	3,154.10	15,696.4	
14	322	3,689.65	17,373.6	
15	334	3,843.01	17,450.2	
16	349	7,740.83	33,570.7	
17	370	6,980.17	28,589.3	
18	394	11,158.09	42,938.0	
19	437	11,069.64	38,368.2	
20	452	10,713.72	35,900.3	
21	476	10,962.76	34,879.9	
22	487	11,210.58	34,843.6	

Assay Class: High Sensitivity DNA Assay  
 Data Path: C:\...ents and Settings\Bioanalyzer\2012-04-05\2012-04-05\_003.xad


Created: 4/5/2012 2:05:11 PM  
 Modified: 4/5/2012 2:54:23 PM

### Electropherogram Summary Continued ...

#### ... Peak table for sample 5 : CMW16 350bp Soni

Peak	Size [bp]	Conc. [pg/μl]	Molarity [pmol/l]	Observations
23	660	208,395.31	478,098.8	
24	729	80,217.45	166,621.3	
25	799	53,951.43	102,314.9	
26	908	47,222.24	78,821.1	
27	1,131	105,906.39	141,885.2	
28	1,905	5,217.51	4,149.7	
29	2,051	2,589.85	1,913.1	
30	2,518	408.57	245.8	
31	2,777	258.81	141.2	
32	3,395	150.89	67.3	
33	9,769	72.32	11.2	
34	 10,380	75.00	10.9	Upper Marker
35	11,782	0.00	0.0	

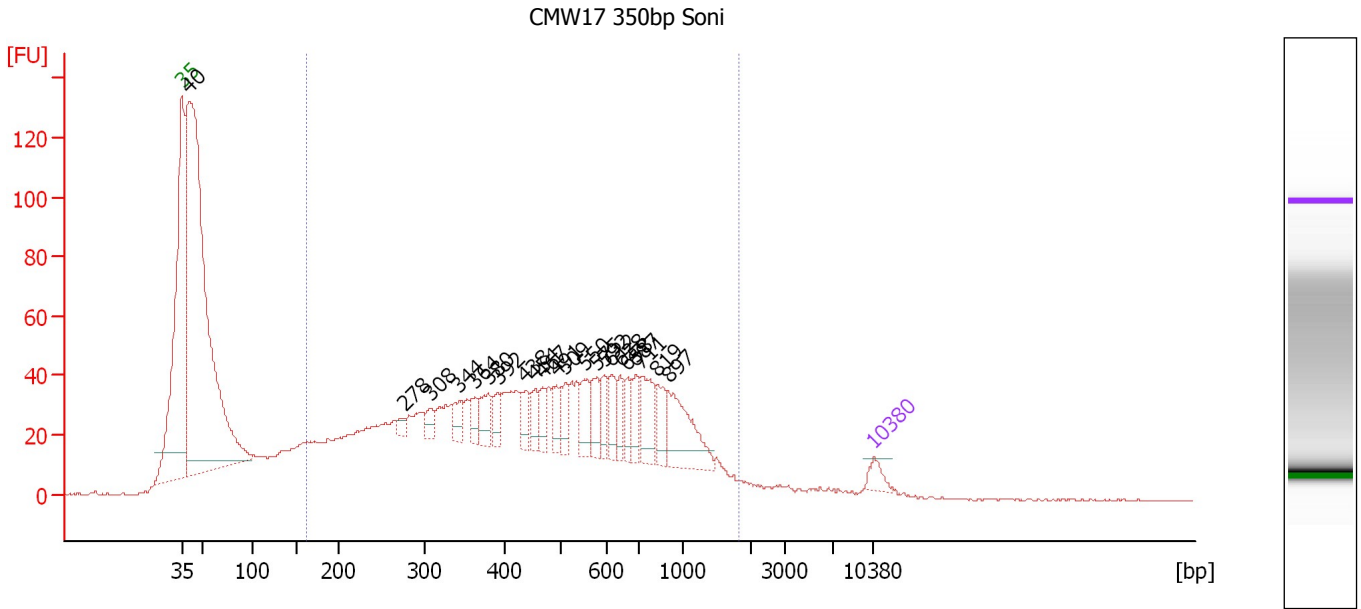
#### Region table for sample 5 : CMW16 350bp Soni

From [bp]	Molarity [pmol/l]	Average Size [bp]	Conc. [pg/μl]	To [bp]	Corr. Area	% of Total	Size distribution in CV [%]	Color
422	1,573,386.1	845	756,443.56	2,007	2,490.7	56	37.2	

Assay Class: High Sensitivity DNA Assay  
 Data Path: C:\...ents and Settings\Bioanalyzer\2012-04-05\2012-04-05\_003.xad

Created: 4/5/2012 2:05:11 PM  
 Modified: 4/5/2012 2:54:23 PM

**Electropherogram Summary Continued ...**



**Overall Results for sample 6 : CMW17 350bp Soni**

Number of peaks found: 22                      Corr. Area 1: 1,618.3  
 Noise: 0.4

**Peak table for sample 6 : CMW17 350bp Soni**

Peak	Size [bp]	Conc. [pg/μl]	Molarity [pmol/l]	Observations
1	35	125.00	5,411.3	Lower Marker
2	40	7,426.09	279,024.9	
3	278	59.81	326.2	
4	308	102.54	503.7	
5	344	151.66	668.5	
6	364	118.07	491.8	
7	380	218.03	870.0	
8	392	143.65	554.7	
9	438	162.10	561.3	
10	454	165.51	552.1	
11	467	131.99	428.1	
12	491	147.89	456.1	
13	509	171.80	511.7	
14	550	222.44	612.4	
15	575	189.75	500.4	
16	592	158.00	404.5	
17	612	181.94	450.7	
18	638	146.94	348.8	
19	658	147.74	340.1	
20	687	176.56	389.6	
21	711	323.39	689.1	
22	819	191.49	354.3	
23	897	517.14	873.4	
24	10,380	75.00	10.9	Upper Marker


Assay Class: High Sensitivity DNA Assay  
Data Path: C:\...ents and Settings\Bioanalyzer\2012-04-05\2012-04-05\_003.xad

Created: 4/5/2012 2:05:11 PM  
Modified: 4/5/2012 2:54:23 PM

**Electropherogram Summary Continued ...**

... Region table for sample 6 :

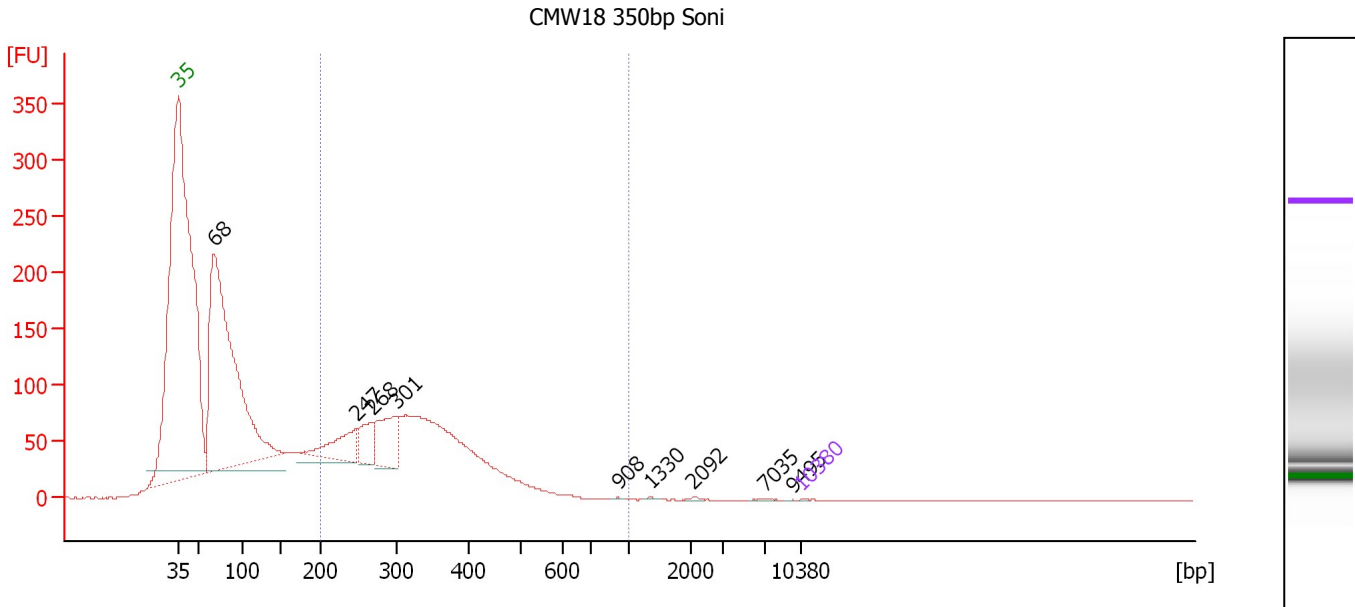
**CMW17 350bp Soni**

<b>From [bp]</b>	<b>Molarity [pmol/l]</b>	<b>Average Size [bp]</b>	<b>Conc. [pg/μl]</b>	<b>To [bp]</b>	<b>Corr. Area</b>	<b>% of Total</b>	<b>Size distribution in CV [%]</b>	<b>Co lor</b>
163	51,280.5	531	12,403.69	1,836	1,618.3	63	55.5	

Assay Class: High Sensitivity DNA Assay  
 Data Path: C:\...ents and Settings\Bioanalyzer\2012-04-05\2012-04-05\_003.xad

Created: 4/5/2012 2:05:11 PM  
 Modified: 4/5/2012 2:54:23 PM

**Electropherogram Summary Continued ...**



**Setpoint Deviations for sample 7 : CMW18 350bp Soni**

Height Threshold [FU] : 0.1

**Overall Results for sample 7 : CMW18 350bp Soni**

Number of peaks found: 9                      Corr. Area 1: 1,636.6  
 Noise: 0.2

**Peak table for sample 7 : CMW18 350bp Soni**

Peak	Size [bp]	Conc. [pg/μl]	Molarity [pmol/l]	Observations
1	35	125.00	5,411.3	Lower Marker
2	68	188,906.38	4,192,066.5	
3	247	17,423.13	106,910.6	
4	268	12,110.89	68,517.6	
5	301	20,113.65	101,390.7	
6	908	155.90	260.1	
7	1,330	204.17	232.5	
8	2,092	242.25	175.4	
9	7,035	201.61	43.4	
10	9,495	23.15	3.7	
11	10,380	75.00	10.9	Upper Marker

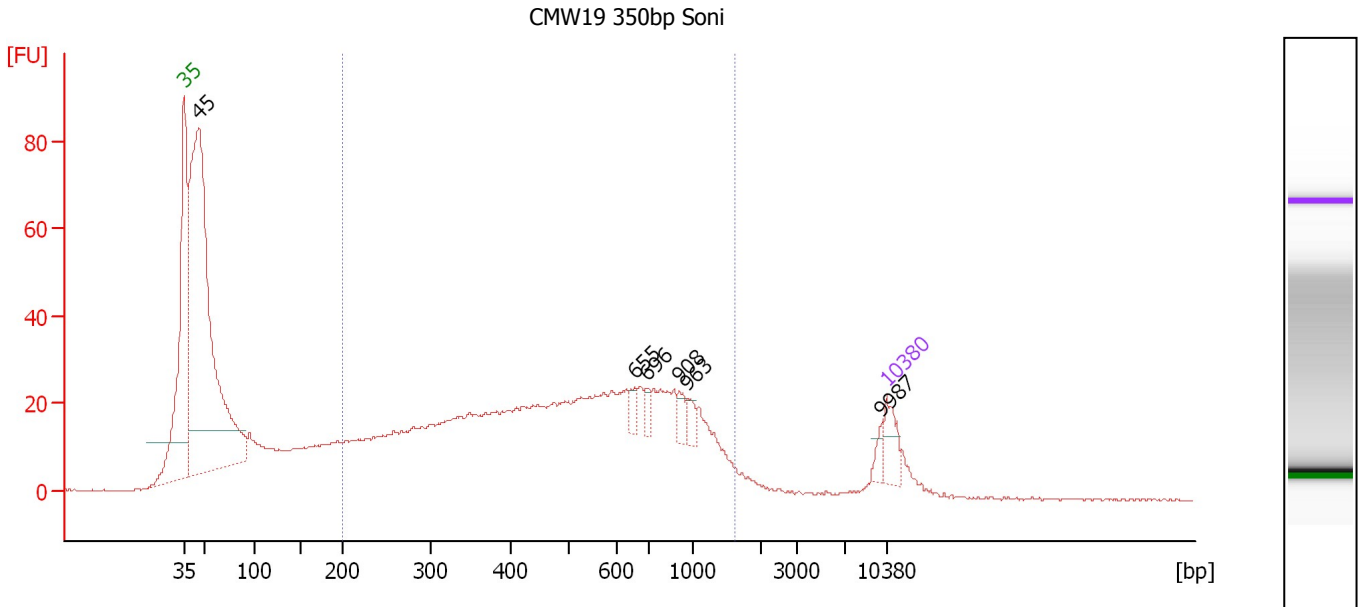
**Region table for sample 7 : CMW18 350bp Soni**

From [bp]	Molarity [pmol/l]	Average Size [bp]	Conc. [pg/μl]	To [bp]	Corr. Area	% of Total	Size distribution in CV [%]	Color
200	1,059,899.5	328	211,978.25	1,000	1,636.6	47	25.9	Blue

Assay Class: High Sensitivity DNA Assay  
 Data Path: C:\...ents and Settings\Bioanalyzer\2012-04-05\2012-04-05\_003.xad

Created: 4/5/2012 2:05:11 PM  
 Modified: 4/5/2012 2:54:23 PM

**Electropherogram Summary Continued ...**



**Setpoint Deviations for sample 8 : CMW19 350bp Soni**

Height Threshold [FU] : 10

**Overall Results for sample 8 : CMW19 350bp Soni**

Number of peaks found: 6                      Corr. Area 1: 879.2  
 Noise: 0.2

**Peak table for sample 8 : CMW19 350bp Soni**

Peak	Size [bp]	Conc. [pg/μl]	Molarity [pmol/l]	Observations
1	35	125.00	5,411.3	Lower Marker
2	45	2,723.63	90,720.4	
3	655	37.22	86.1	
4	696	34.34	74.7	
5	908	40.35	67.3	
6	963	39.46	62.1	
7	9,987	27.75	4.2	
8	10,380	75.00	10.9	Upper Marker

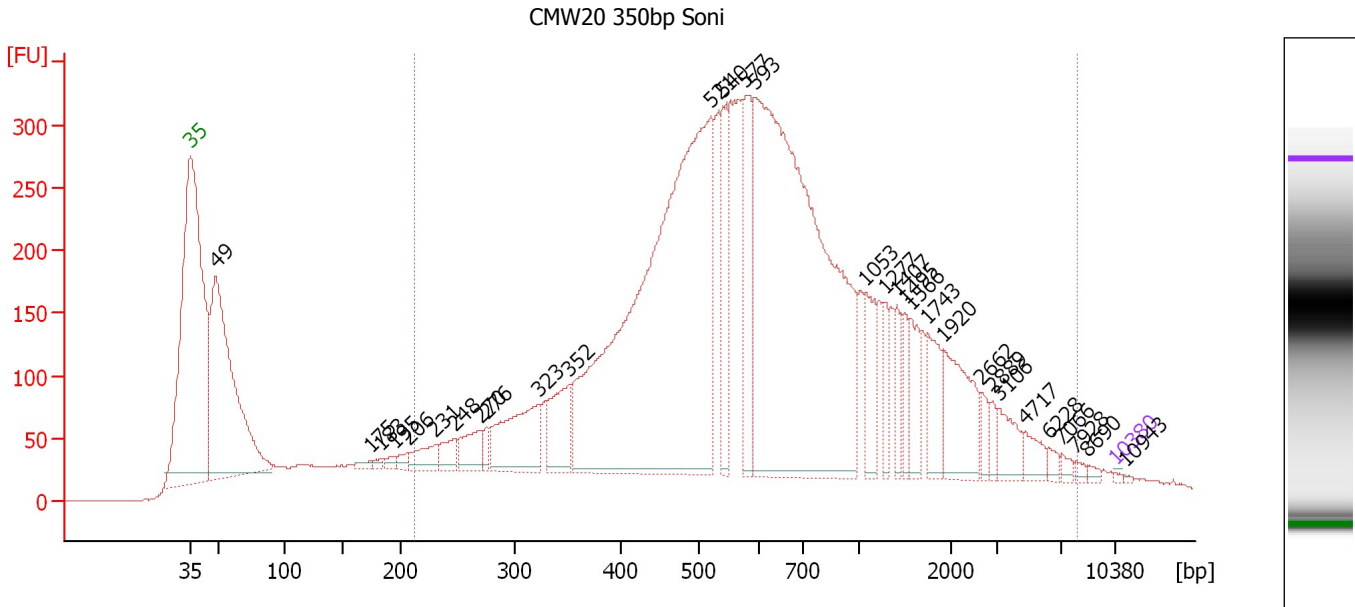
**Region table for sample 8 : CMW19 350bp Soni**

From [bp]	Molarity [pmol/l]	Average Size [bp]	Conc. [pg/μl]	To [bp]	Corr. Area	% of Total	Size distribution in CV [%]	Color
200	14,789.9	556	3,960.09	1,615	879.2	56	51.1	Blue

Assay Class: High Sensitivity DNA Assay  
 Data Path: C:\...ents and Settings\Bioanalyzer\2012-04-05\2012-04-05\_003.xad

Created: 4/5/2012 2:05:11 PM  
 Modified: 4/5/2012 2:54:23 PM

**Electropherogram Summary Continued ...**



**Overall Results for sample 9 : CMW20 350bp Soni**

Number of peaks found: 31                      Corr. Area 1: 9,132.4  
 Noise: 0.5

**Peak table for sample 9 : CMW20 350bp Soni**

Peak	Size [bp]	Conc. [pg/μl]	Molarity [pmol/l]	Observations
1	35	125.00	5,411.3	Lower Marker
2	49	29,168.45	908,262.2	
3	175	444.49	3,852.0	
4	183	347.79	2,876.5	
5	195	495.18	3,851.6	
6	206	606.16	4,448.3	
7	231	1,892.46	12,420.1	
8	248	1,671.14	10,220.0	
9	270	2,482.32	13,915.9	
10	276	830.07	4,558.4	
11	323	6,987.13	32,800.5	
12	352	4,552.55	19,614.0	
13	521	54,056.94	157,104.0	
14	540	5,192.02	14,558.6	
15	577	6,413.72	16,852.6	
16	593	48,863.25	124,838.1	
17	1,053	3,090.16	4,445.7	
18	1,277	1,543.58	1,831.1	
19	1,407	1,568.28	1,688.9	
20	1,495	1,388.70	1,407.1	
21	1,566	2,084.23	2,016.4	
22	1,743	2,488.58	2,163.3	
23	1,920	4,590.71	3,622.9	
24	2,662	824.25	469.2	
25	2,889	570.30	299.1	
26	3,106	1,668.20	813.6	




Assay Class: High Sensitivity DNA Assay  
 Data Path: C:\...ents and Settings\Bioanalyzer\2012-04-05\2012-04-05\_003.xad


Created: 4/5/2012 2:05:11 PM  
 Modified: 4/5/2012 2:54:23 PM

### Electropherogram Summary Continued ...

#### ... Peak table for sample 9 : CMW20 350bp Soni

Peak	Size [bp]	Conc. [pg/μl]	Molarity [pmol/l]	Observations
27	4,717	1,062.59	341.3	
28	6,228	416.85	101.4	
29	7,066	336.51	72.2	
30	7,928	238.09	45.5	
31	8,690	211.73	36.9	
32	 10,380	75.00	10.9	Upper Marker
33	10,943	0.00	0.0	

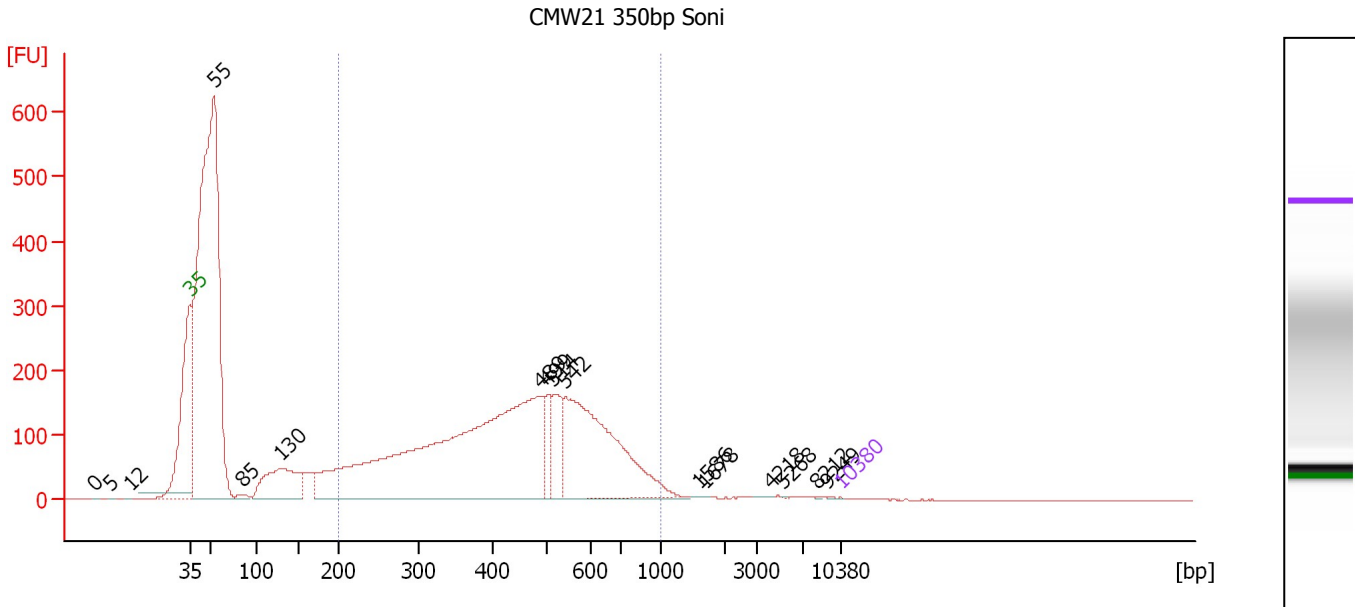
#### Region table for sample 9 : CMW20 350bp Soni

From [bp]	Molarity [pmol/l]	Average Size [bp]	Conc. [pg/μl]	To [bp]	Corr. Area	% of Total	Size distribution in CV [%]	Color
212	584,330.9	907	200,082.97	8,067	9,132.4	84	100.0	

Assay Class: High Sensitivity DNA Assay  
 Data Path: C:\...ents and Settings\Bioanalyzer\2012-04-05\2012-04-05\_003.xad

Created: 4/5/2012 2:05:11 PM  
 Modified: 4/5/2012 2:54:23 PM

**Electropherogram Summary Continued ...**



**Setpoint Deviations for sample 10 : CMW21 350bp Soni**

Height Threshold [FU] : 0.1

**Overall Results for sample 10 : CMW21 350bp Soni**

Number of peaks found: 16                      Corr. Area 1: 4,171.3  
 Noise: 0.3

**Peak table for sample 10 : CMW21 350bp Soni**

Peak	Size [bp]	Conc. [pg/μl]	Molarity [pmol/l]	Observations
1	0	0.00	0.0	
2	5	0.00	0.0	
3	12	0.00	0.0	
4	35	125.00	5,411.3	Lower Marker
5	55	800,614.63	22,234,366.0	
6	85	4,783.86	85,266.2	
7	130	89,604.32	1,046,992.8	
8	489	463,388.66	1,437,130.4	
9	499	24,771.20	75,157.5	
10	514	42,770.89	126,085.8	
11	542	196,392.41	548,778.0	
12	1,586	265.77	254.0	
13	1,678	126.10	113.9	
14	4,218	360.91	129.6	
15	5,268	265.40	76.3	
16	8,212	248.04	45.8	
17	9,249	197.75	32.4	
18	10,380	75.00	10.9	Upper Marker

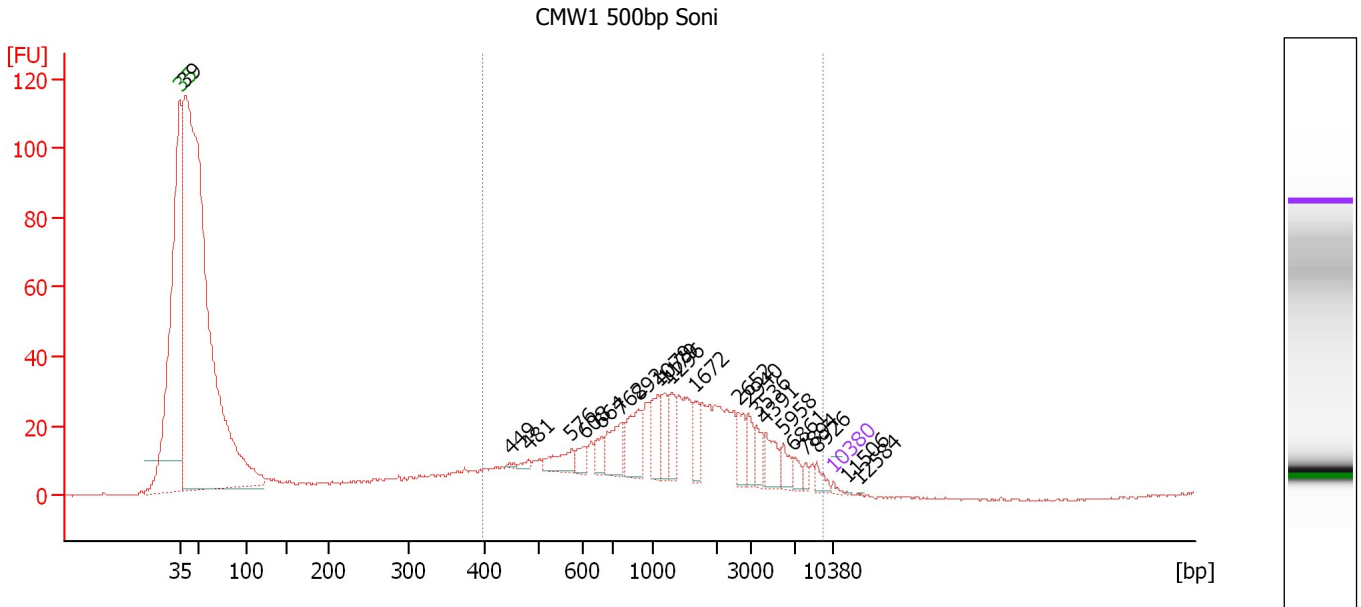
**Region table for sample 10 : CMW21 350bp Soni**

From [bp]	Molarity [pmol/l]	Average Size [bp]	Conc. [pg/μl]	To [bp]	Corr. Area	% of Total	Size distribution in CV [%]	Color
200	3,094,884.8	462	797,320.63	1,000	4,171.3	52	33.5	Blue

Assay Class: High Sensitivity DNA Assay  
 Data Path: C:\...ents and Settings\Bioanalyzer\2012-04-05\2012-04-05\_003.xad

Created: 4/5/2012 2:05:11 PM  
 Modified: 4/5/2012 2:54:23 PM

**Electropherogram Summary Continued ...**



**Setpoint Deviations for sample 11 : CMW1 500bp Soni**

Height Threshold [FU] : 0.5

**Overall Results for sample 11 : CMW1 500bp Soni**

Number of peaks found: 22                      Corr. Area 1: 615.8  
 Noise: 0.3

**Peak table for sample 11 : CMW1 500bp Soni**

Peak	Size [bp]	Conc. [pg/μl]	Molarity [pmol/l]	Observations
1	35	125.00	5,411.3	Lower Marker
2	39	59,256.22	2,300,519.5	
3	449	87.80	296.2	
4	481	171.66	540.2	
5	576	907.61	2,387.9	
6	608	489.16	1,219.9	
7	664	563.42	1,285.6	
8	762	1,441.13	2,867.4	
9	892	1,610.53	2,737.0	
10	1,079	1,176.70	1,652.1	
11	1,179	852.94	1,095.9	
12	1,296	895.53	1,046.9	
13	1,672	676.30	613.0	
14	2,652	768.53	439.1	
15	2,940	594.71	306.4	
16	3,536	541.32	231.9	
17	4,391	838.51	289.3	
18	5,958	510.62	129.8	
19	6,861	310.61	68.6	
20	7,894	191.06	36.7	
21	8,926	315.86	53.6	
22	10,380	75.00	10.9	Upper Marker


Assay Class: High Sensitivity DNA Assay  
Data Path: C:\...ents and Settings\Bioanalyzer\2012-04-05\2012-04-05\_003.xad

Created: 4/5/2012 2:05:11 PM  
Modified: 4/5/2012 2:54:23 PM

**Electropherogram Summary Continued ...****... Peak table for sample 11 : CMW1 500bp Soni**

Peak	Size [bp]	Conc. [pg/μl]	Molarity [pmol/l]	Observations
23	11,506	0.00	0.0	
24	12,584	0.00	0.0	

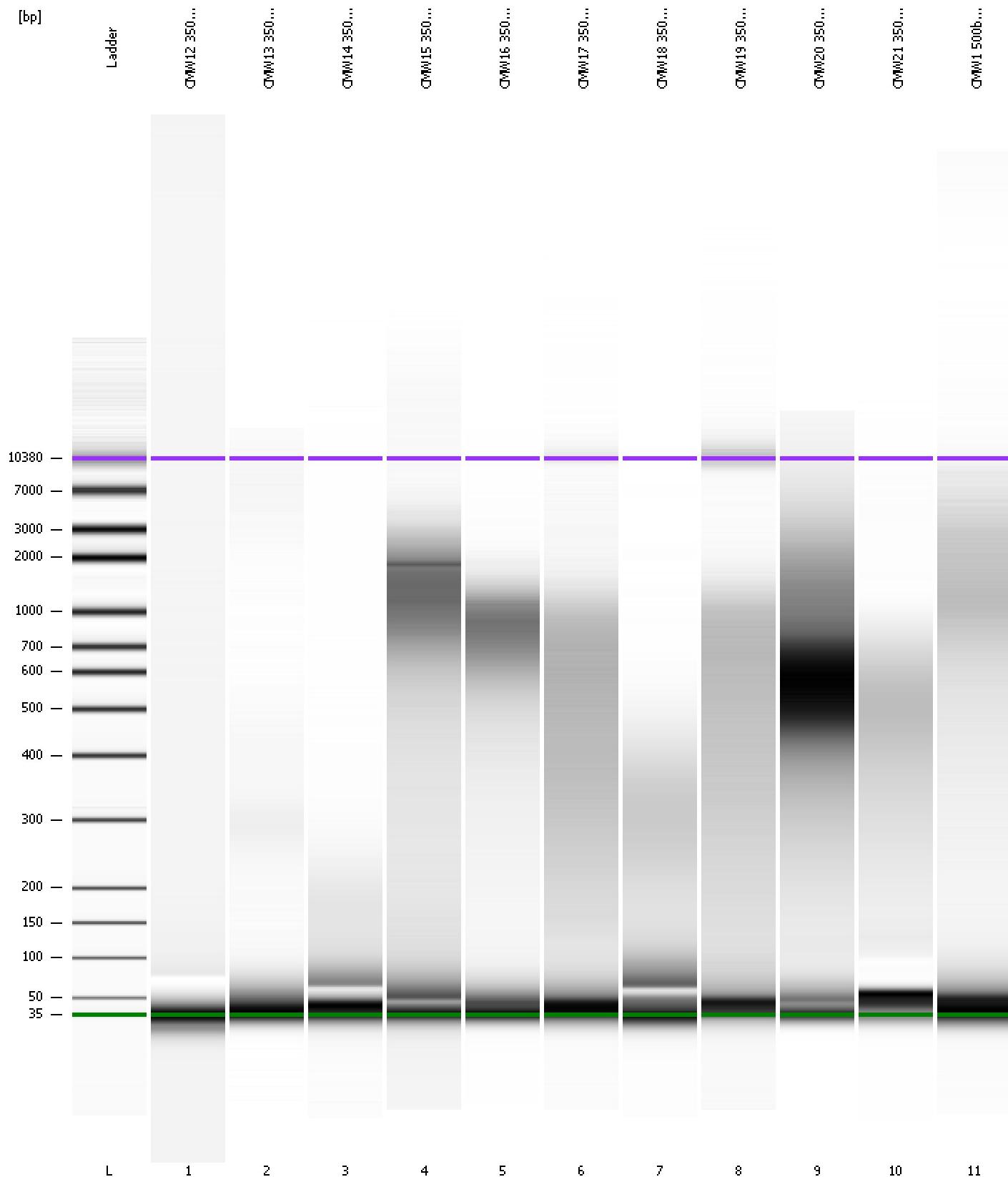
**Region table for sample 11 : CMW1 500bp Soni**

From [bp]	Molarity [pmol/l]	Average Size [bp]	Conc. [pg/μl]	To [bp]	Corr. Area	% of Total	Size distribution in CV [%]	Color
399	43,846.4	1,932	27,588.10	9,385	615.8	41	95.2	

Assay Class: High Sensitivity DNA Assay  
Data Path: C:\...ents and Settings\Bioanalyzer\2012-04-05\2012-04-05\_003.xad

Created: 4/5/2012 2:05:11 PM  
Modified: 4/5/2012 2:54:23 PM

**Gel Image**



Assay Class: High Sensitivity DNA Assay  
 Data Path: C:\...ents and Settings\Bioanalyzer\2012-04-05\2012-04-05\_003.xad

Created: 4/5/2012 2:05:11 PM  
 Modified: 4/5/2012 2:54:23 PM

**Run Logbook**

Description	Number	Source	Category	Sub Category	Time	Time Zone	User	Host
Run ended on port 1 (Number of wells acquired: 12)		Instrument	Run		4/5/2012 2:46:28 PM	(GMT --07:00) Pacific Standard Time	UC Davis	D8XSMGH1
Run started on port 1 (File: C:\Documents and Settings\Bioanalyzer\2012-04-05\2012-04-05_003.xad)		Instrument	Run		4/5/2012 2:05:16 PM	(GMT --07:00) Pacific Standard Time	UC Davis	D8XSMGH1
Product Number : G2938B		Instrument	Run		4/5/2012 2:05:16 PM	(GMT --07:00) Pacific Standard Time	UC Davis	D8XSMGH1
Name :		Instrument	Run		4/5/2012 2:05:16 PM	(GMT --07:00) Pacific Standard Time	UC Davis	D8XSMGH1
Vendor : Agilent Technologies		Instrument	Run		4/5/2012 2:05:16 PM	(GMT --07:00) Pacific Standard Time	UC Davis	D8XSMGH1
Serial# : DE13701086		Instrument	Run		4/5/2012 2:05:16 PM	(GMT --07:00) Pacific Standard Time	UC Davis	D8XSMGH1
Firmware : C.01.069		Instrument	Run		4/5/2012 2:05:16 PM	(GMT --07:00) Pacific Standard Time	UC Davis	D8XSMGH1
Cartridge : Electrode		Instrument	Run		4/5/2012 2:05:16 PM	(GMT --07:00) Pacific Standard Time	UC Davis	D8XSMGH1