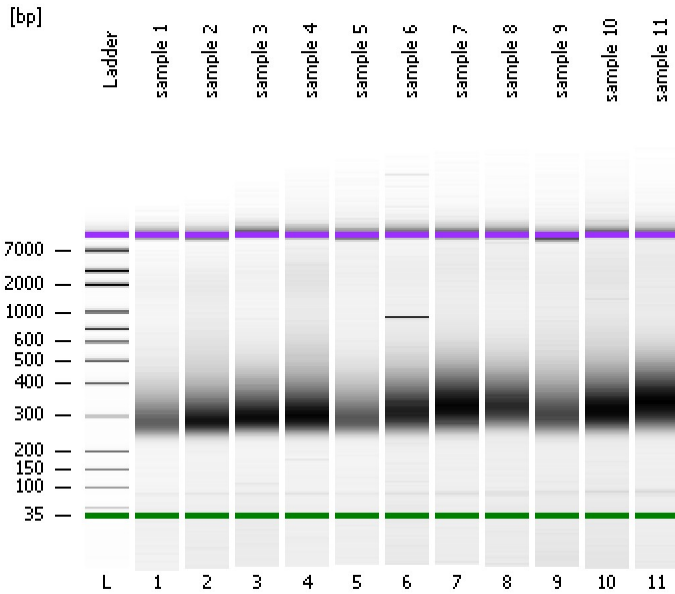


Assay Class: High Sensitivity DNA Assay
Data Path: C:\...ents and Settings\Bioanalyzer\2012-04-05\2012-04-05_004.xad

Created: 4/5/2012 3:28:47 PM
Modified: 4/5/2012 4:15:27 PM

Electrophoresis File Run Summary



Instrument Information:

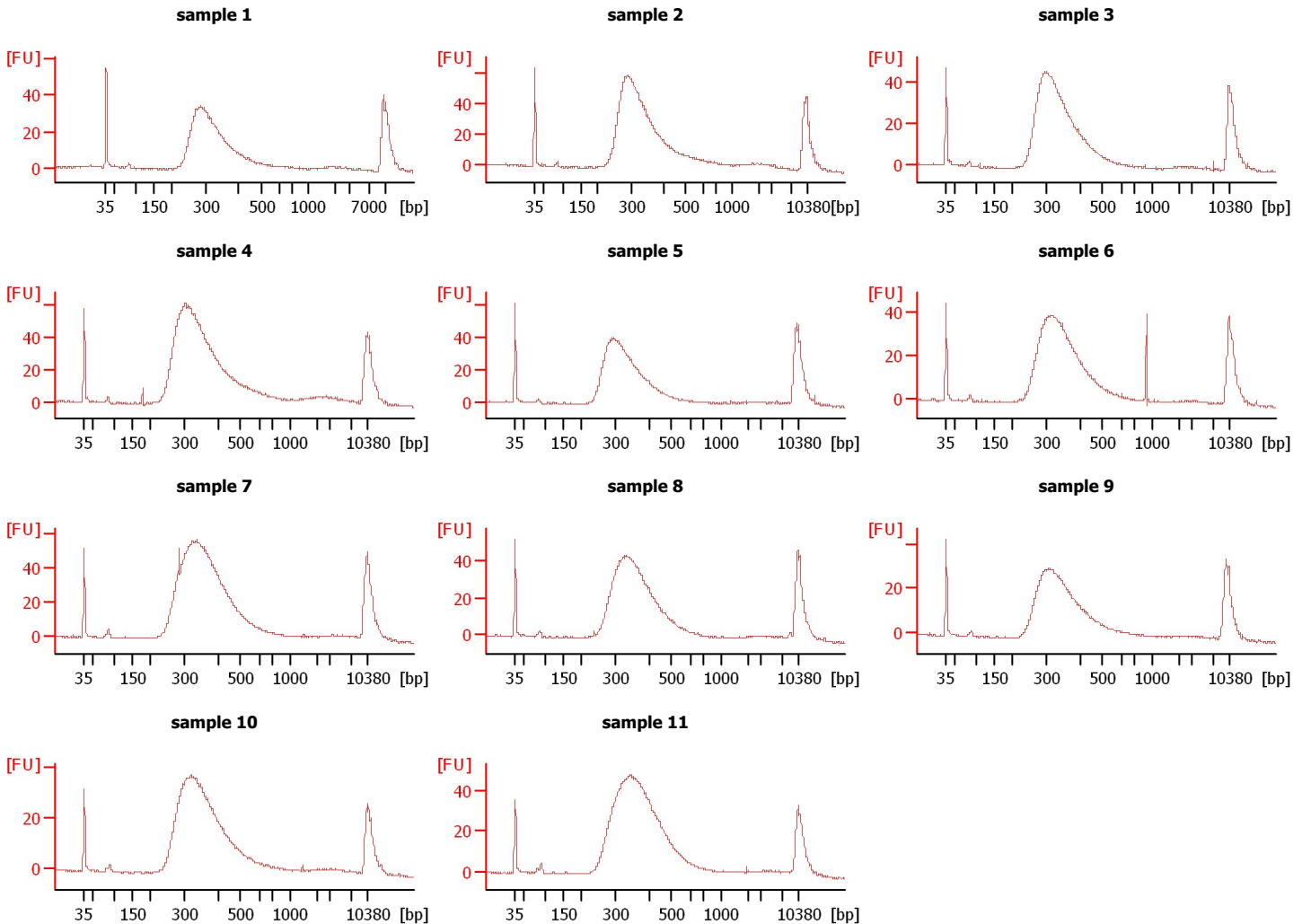
Instrument Name: DE13701086 Firmware: C.01.069
Serial#: DE13701086 Type: G2938B

Assay Information:

Assay Origin Path: C:\Program Files\Agilent\2100 bioanalyzer\2100 expert\assays\dsDNA\High Sensitivity DNA.xsy
Assay Class: High Sensitivity DNA Assay
Version: 1.03
Assay Comments: Copyright © 2003-2010 Agilent Technologies

Chip Information:

Chip Lot #: Reagent Kit Lot #: Chip Comments:



Assay Class: High Sensitivity DNA Assay
 Data Path: C:\...ents and Settings\Bioanalyzer\2012-04-05\2012-04-05_004.xad

Created: 4/5/2012 3:28:47 PM
 Modified: 4/5/2012 4:15:27 PM

Electrophoresis File Run Summary (Chip Summary)

Sample Name	Sample Comment	Rest. Digest	Status	Observation	Result Label	Result Color
sample 1		<input type="checkbox"/>	✓			
sample 2		<input type="checkbox"/>	✓			
sample 3		<input type="checkbox"/>	✓			
sample 4		<input type="checkbox"/>	✓			
sample 5		<input type="checkbox"/>	✓			
sample 6		<input type="checkbox"/>	✓			
sample 7		<input type="checkbox"/>	✓			
sample 8		<input type="checkbox"/>	✓			
sample 9		<input type="checkbox"/>	✓			
sample 10		<input type="checkbox"/>	✓			
sample 11		<input type="checkbox"/>	✓			
Ladder		<input type="checkbox"/>	✓			

Chip Lot #

Reagent Kit Lot #

Chip Comments :

Assay Class: High Sensitivity DNA Assay
Data Path: C:\...ents and Settings\Bioanalyzer\2012-04-05\2012-04-05_004.xad

Created: 4/5/2012 3:28:47 PM
Modified: 4/5/2012 4:15:27 PM

Electrophoresis Assay Details

General Analysis Settings

Number of Available Sample and Ladder Wells (Max.) : 12
Minimum Visible Range [s] : 32
Maximum Visible Range [s] : 138
Start Analysis Time Range [s] : 33
End Analysis Time Range [s] : 137.5
Ladder Concentration [pg/μl] : 1950
Uses Standard Area for Ladder Fragments
Lower Marker Concentration [pg/μl] : 125
Upper Marker Concentration [pg/μl] : 75
Used Upper Marker for Quantitation
Standard Curve Fit is Point to Point
Show Data Aligned to Lower and Upper Marker

Integrator Settings

Integration Start Time [s] : 33.05
Integration End Time [s] : 137
Slope Threshold : 0.8
Height Threshold [FU] : 5
Area Threshold : 0.1
Width Threshold [s] : 0.6
Baseline Plateau [s] : 0.5

Filter Settings

Filter Width [s] : 0.5
Polynomial Order : 4

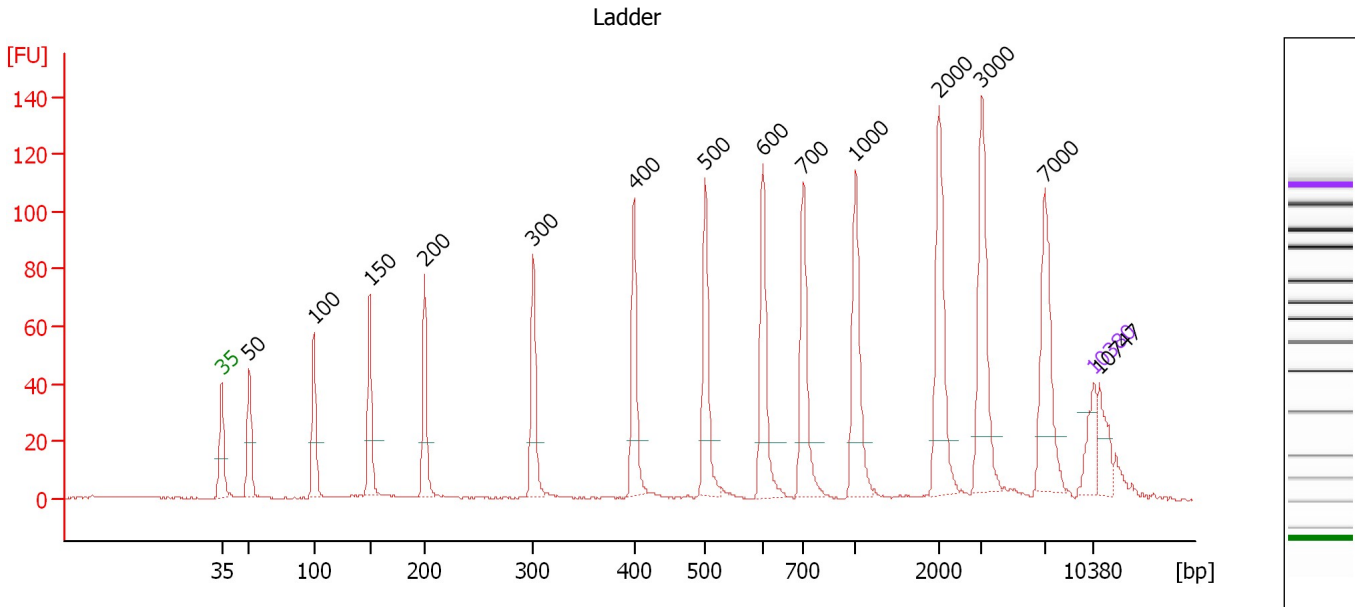
Ladder

Ladder Peak	Size	Area
1	35	160
2	50	210
3	100	208
4	150	221
5	200	242
6	300	270
7	400	305
8	500	306
9	600	336
10	700	321
11	1000	366
12	2000	413
13	3000	411
14	7000	400
15	10380	214

Assay Class: High Sensitivity DNA Assay
 Data Path: C:\...ents and Settings\Bioanalyzer\2012-04-05\2012-04-05_004.xad

Created: 4/5/2012 3:28:47 PM
 Modified: 4/5/2012 4:15:27 PM

Electropherogram Summary



Overall Results for Ladder

Noise: 0.3

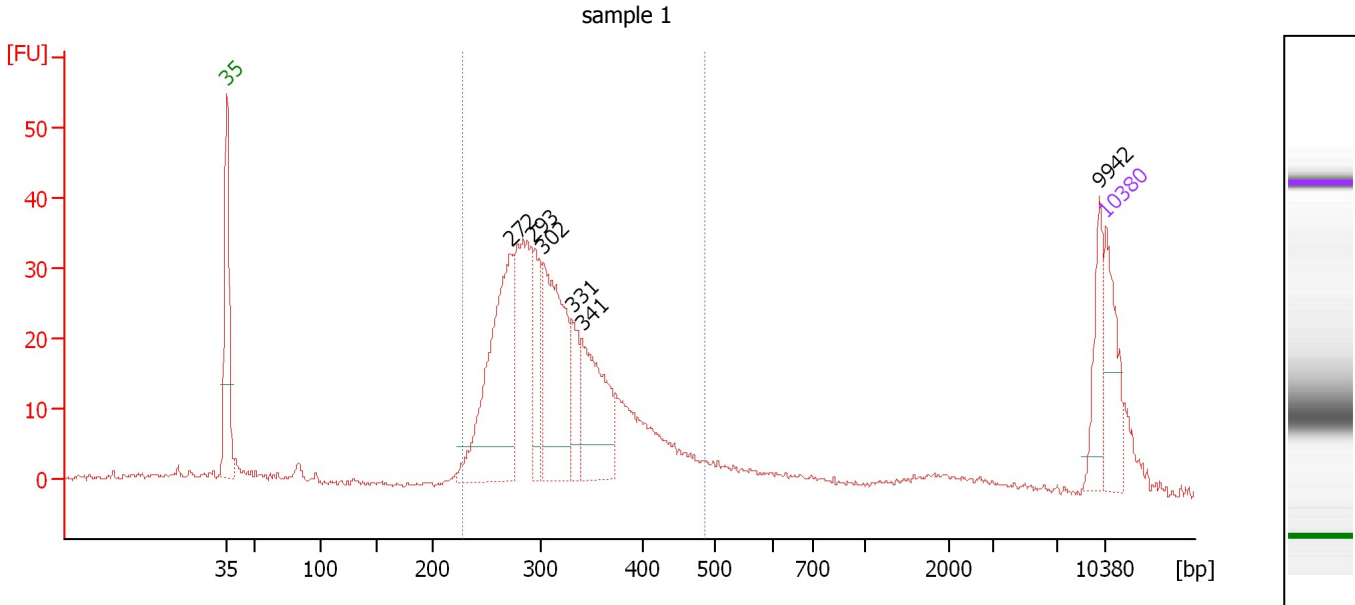
Peak table for Ladder

Peak	Size [bp]	Conc. [pg/μl]	Molarity [pmol/l]	Observations
1	35	125.00	5,411.3	Lower Marker
2	50	150.00	4,545.5	Ladder Peak
3	100	150.00	2,272.7	Ladder Peak
4	150	150.00	1,515.2	Ladder Peak
5	200	150.00	1,136.4	Ladder Peak
6	300	150.00	757.6	Ladder Peak
7	400	150.00	568.2	Ladder Peak
8	500	150.00	454.5	Ladder Peak
9	600	150.00	378.8	Ladder Peak
10	700	150.00	324.7	Ladder Peak
11	1,000	150.00	227.3	Ladder Peak
12	2,000	150.00	113.6	Ladder Peak
13	3,000	150.00	75.8	Ladder Peak
14	7,000	150.00	32.5	Ladder Peak
15	10,380	75.00	10.9	Upper Marker
16	10,747	0.00	0.0	

Assay Class: High Sensitivity DNA Assay
 Data Path: C:\...ents and Settings\Bioanalyzer\2012-04-05\2012-04-05_004.xad

Created: 4/5/2012 3:28:47 PM
 Modified: 4/5/2012 4:15:27 PM

Electropherogram Summary Continued ...



Overall Results for sample 1 : sample 1

Number of peaks found: 6 Corr. Area 1: 495.4
 Noise: 0.3

Peak table for sample 1 : sample 1

Peak	Size [bp]	Conc. [pg/μl]	Molarity [pmol/l]	Observations
1	35	125.00	5,411.3	Lower Marker
2	272	377.60	2,103.5	
3	293	113.72	588.0	
4	302	290.91	1,457.2	
5	331	69.39	317.8	
6	341	182.71	812.3	
7	9,942	61.87	9.4	
8	10,380	75.00	10.9	Upper Marker

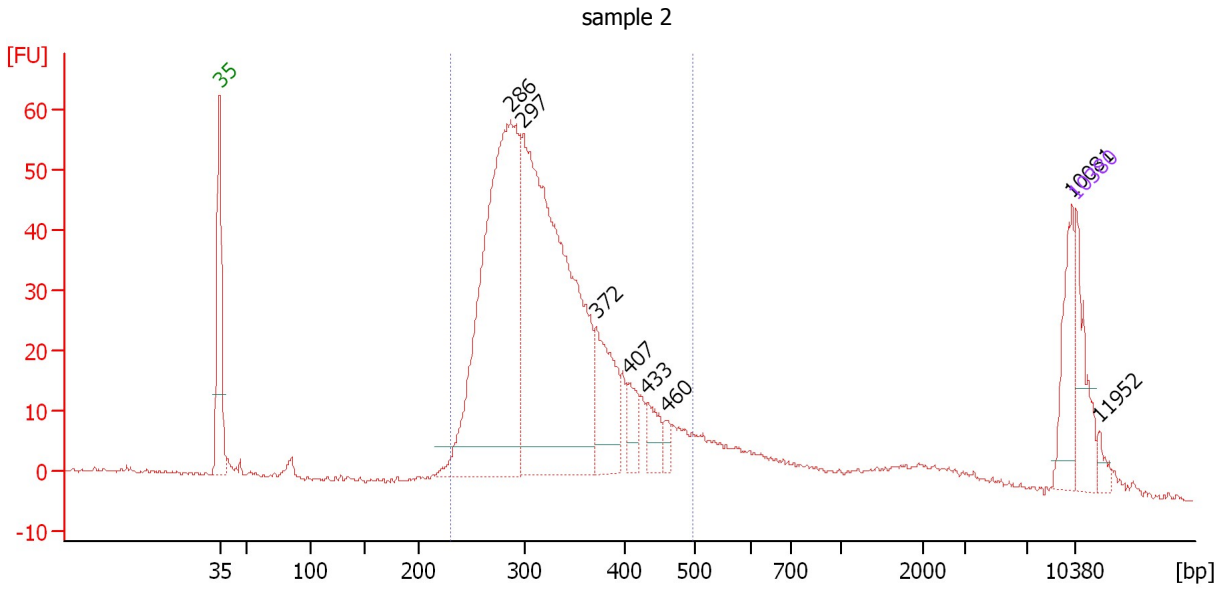
Region table for sample 1 : sample 1

From [bp]	Molarity [pmol/l]	Average Size [bp]	Conc. [pg/μl]	To [bp]	Corr. Area	% of Total	Size distribution in CV [%]	Color
228	7,511.2	319	1,527.12	488	495.4	80	16.9	Blue

Assay Class: High Sensitivity DNA Assay
 Data Path: C:\...ents and Settings\Bioanalyzer\2012-04-05\2012-04-05_004.xad

Created: 4/5/2012 3:28:47 PM
 Modified: 4/5/2012 4:15:27 PM

Electropherogram Summary Continued ...



Overall Results for sample 2 : sample 2

Number of peaks found: 8 Corr. Area 1: 871.3
 Noise: 0.4

Peak table for sample 2 : sample 2

Peak	Size [bp]	Conc. [pg/μl]	Molarity [pmol/l]	Observations
1	35	125.00	5,411.3	Lower Marker
2	286	900.77	4,767.0	
3	297	1,027.78	5,237.2	
4	372	152.84	622.4	
5	407	44.64	166.2	
6	433	44.75	156.6	
7	460	17.40	57.3	
8	10,081	76.99	11.6	
9	10,380	75.00	10.9	Upper Marker
10	11,952	0.00	0.0	

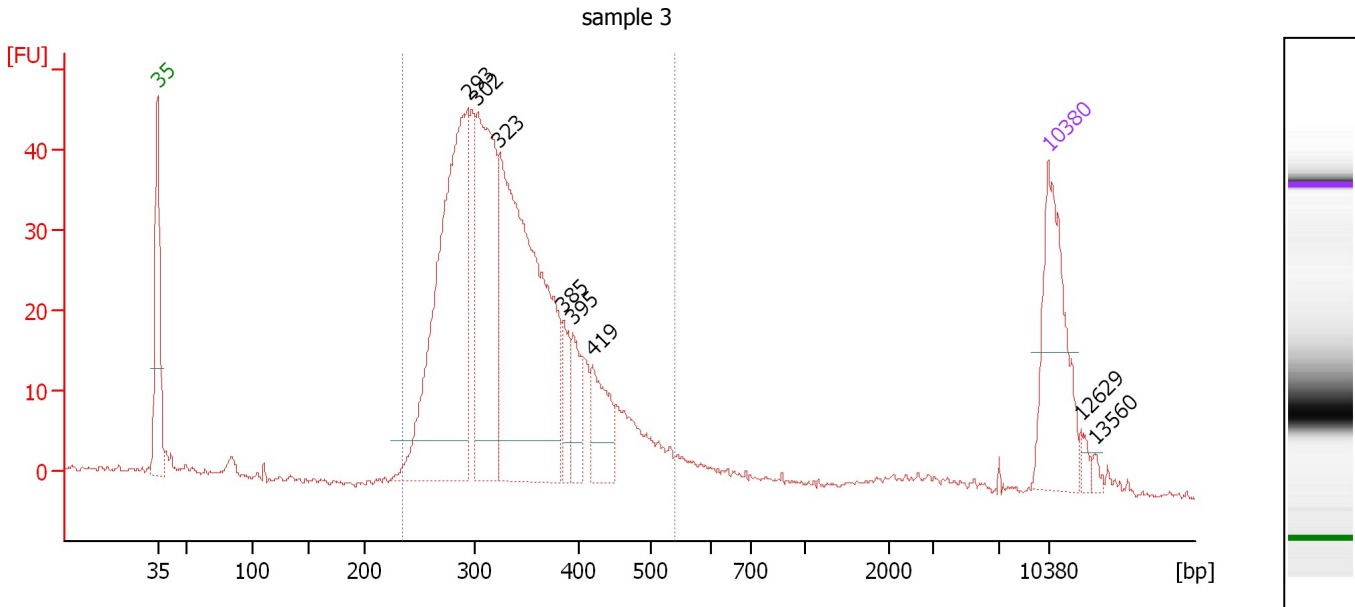
Region table for sample 2 : sample 2

From [bp]	Molarity [pmol/l]	Average Size [bp]	Conc. [pg/μl]	To [bp]	Corr. Area	% of Total	Size distribution in CV [%]	Color
229	11,320.6	327	2,347.46	498	871.3	80	17.6	Blue

Assay Class: High Sensitivity DNA Assay
 Data Path: C:\...ents and Settings\Bioanalyzer\2012-04-05\2012-04-05_004.xad

Created: 4/5/2012 3:28:47 PM
 Modified: 4/5/2012 4:15:27 PM

Electropherogram Summary Continued ...



Overall Results for sample 3 : sample 3

Number of peaks found: 8 Corr. Area 1: 680.1
 Noise: 0.4

Peak table for sample 3 : sample 3

Peak	Size [bp]	Conc. [pg/μl]	Molarity [pmol/l]	Observations
1	35	125.00	5,411.3	Lower Marker
2	293	316.69	1,637.2	
3	302	185.45	930.2	
4	323	339.43	1,590.8	
5	385	25.47	100.2	
6	395	29.64	113.8	
7	419	42.05	151.9	
8	10,380	75.00	10.9	Upper Marker
9	12,629	0.00	0.0	
10	13,560	0.00	0.0	

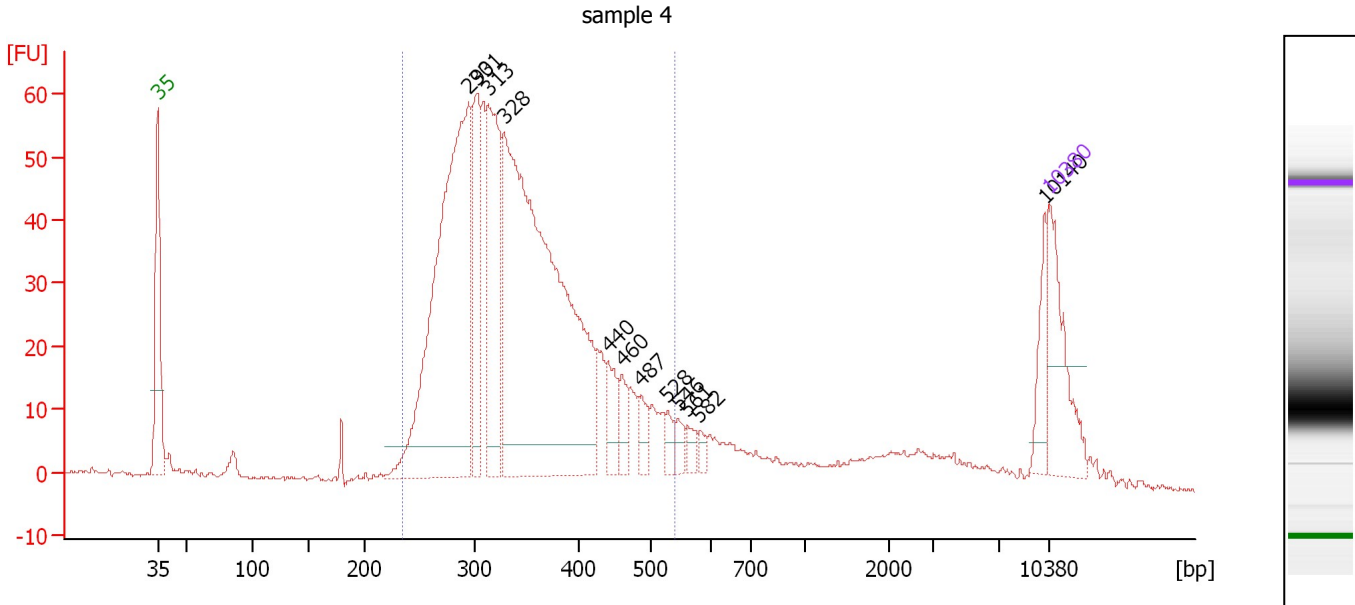
Region table for sample 3 : sample 3

From [bp]	Molarity [pmol/l]	Average Size [bp]	Conc. [pg/μl]	To [bp]	Corr. Area	% of Total	Size distribution in CV [%]	Color
233	4,929.9	337	1,054.50	541	680.1	91	17.9	Blue

Assay Class: High Sensitivity DNA Assay
 Data Path: C:\...ents and Settings\Bioanalyzer\2012-04-05\2012-04-05_004.xad

Created: 4/5/2012 3:28:47 PM
 Modified: 4/5/2012 4:15:27 PM

Electropherogram Summary Continued ...



Overall Results for sample 4 : sample 4

Number of peaks found: 12 Corr. Area 1: 982.1
 Noise: 0.4

Peak table for sample 4 : sample 4

Peak	Size [bp]	Conc. [pg/μl]	Molarity [pmol/l]	Observations
1	35	125.00	5,411.3	Lower Marker
2	293	535.25	2,763.7	
3	301	120.71	607.6	
4	313	179.18	868.7	
5	328	721.56	3,332.7	
6	440	32.58	112.1	
7	460	24.23	79.8	
8	487	19.76	61.5	
9	528	14.77	42.4	
10	546	12.00	33.3	
11	561	11.39	30.8	
12	582	7.77	20.2	
13	10,140	29.94	4.5	
14	10,380	75.00	10.9	Upper Marker

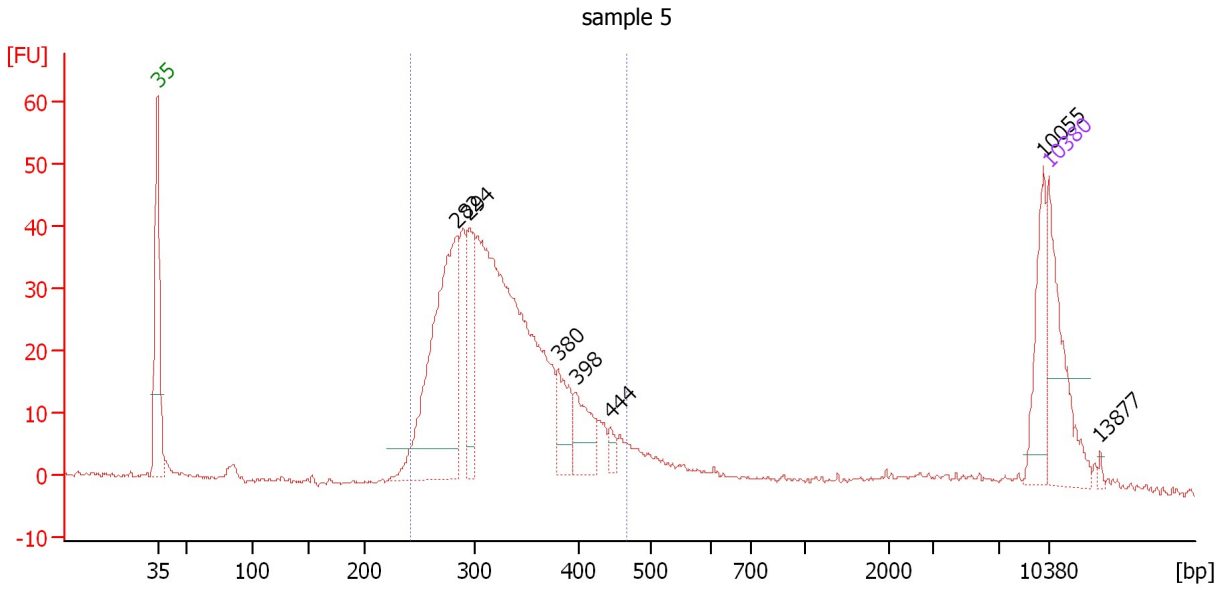
Region table for sample 4 : sample 4

From [bp]	Molarity [pmol/l]	Average Size [bp]	Conc. [pg/μl]	To [bp]	Corr. Area	% of Total	Size distribution in CV [%]	Color
234	8,422.8	344	1,827.95	541	982.1	83	19.1	Blue

Assay Class: High Sensitivity DNA Assay
 Data Path: C:\...ents and Settings\Bioanalyzer\2012-04-05\2012-04-05_004.xad

Created: 4/5/2012 3:28:47 PM
 Modified: 4/5/2012 4:15:27 PM

Electropherogram Summary Continued ...



Overall Results for sample 5 : sample 5

Number of peaks found: 7 Corr. Area 1: 575.7
 Noise: 0.3

Peak table for sample 5 : sample 5

Peak	Size [bp]	Conc. [pg/μl]	Molarity [pmol/l]	Observations
1	35	125.00	5,411.3	Lower Marker
2	282	291.93	1,567.3	
3	294	83.59	430.5	
4	380	49.60	197.5	
5	398	46.48	176.9	
6	444	10.32	35.2	
7	10,055	52.20	7.9	
8	10,380	75.00	10.9	Upper Marker
9	13,877	0.00	0.0	

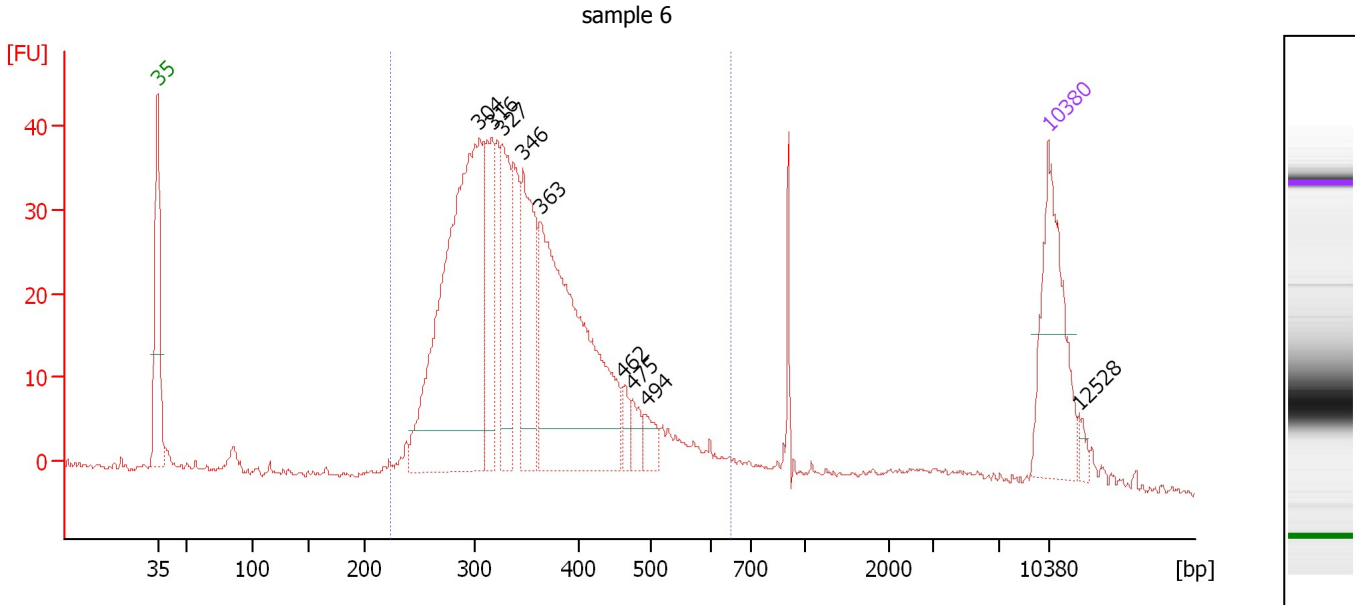
Region table for sample 5 : sample 5

From [bp]	Molarity [pmol/l]	Average Size [bp]	Conc. [pg/μl]	To [bp]	Corr. Area	% of Total	Size distribution in CV [%]	Color
241	5,287.0	326	1,103.19	466	575.7	77	15.5	Blue

Assay Class: High Sensitivity DNA Assay
 Data Path: C:\...ents and Settings\Bioanalyzer\2012-04-05\2012-04-05_004.xad

Created: 4/5/2012 3:28:47 PM
 Modified: 4/5/2012 4:15:27 PM

Electropherogram Summary Continued ...



Overall Results for sample 6 : sample 6

Number of peaks found: 9 Corr. Area 1: 672.5
 Noise: 0.4

Peak table for sample 6 : sample 6

Peak	Size [bp]	Conc. [pg/μl]	Molarity [pmol/l]	Observations
1	35	125.00	5,411.3	Lower Marker
2	304	360.44	1,796.8	
3	316	84.22	403.3	
4	327	78.83	365.8	
5	346	100.95	441.8	
6	363	265.43	1,108.4	
7	462	11.43	37.5	
8	475	13.77	43.9	
9	494	13.98	42.9	
10	10,380	75.00	10.9	Upper Marker
11	12,528	0.00	0.0	

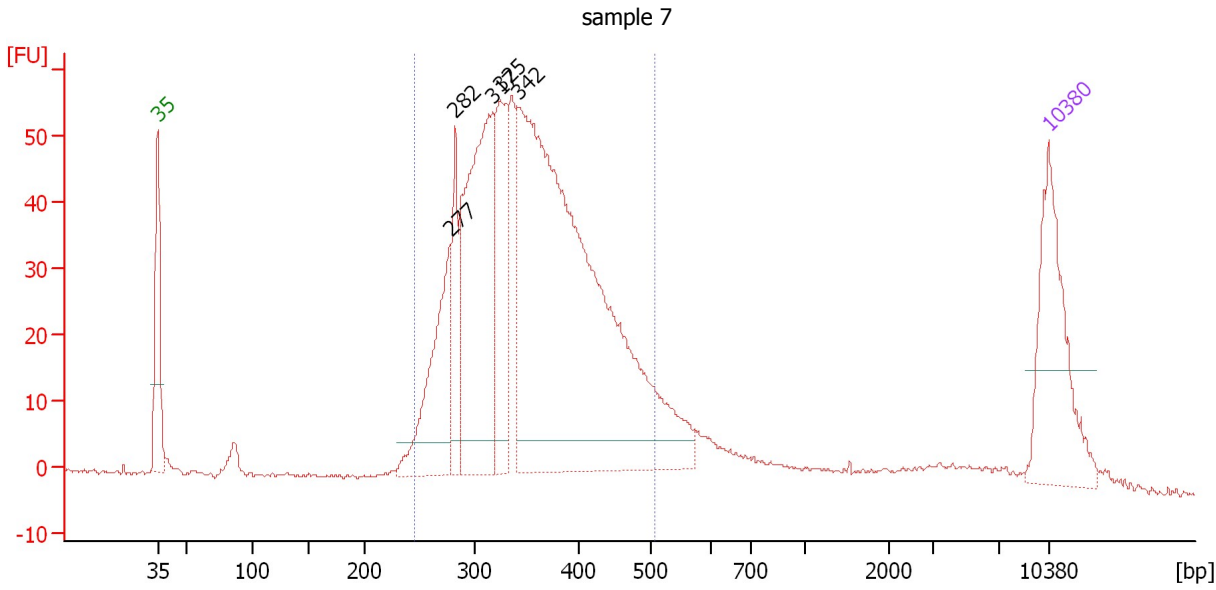
Region table for sample 6 : sample 6

From [bp]	Molarity [pmol/l]	Average Size [bp]	Conc. [pg/μl]	To [bp]	Corr. Area	% of Total	Size distribution in CV [%]	Color
224	5,037.3	354	1,116.15	650	672.5	90	21.3	Blue

Assay Class: High Sensitivity DNA Assay
 Data Path: C:\...ents and Settings\Bioanalyzer\2012-04-05\2012-04-05_004.xad

Created: 4/5/2012 3:28:47 PM
 Modified: 4/5/2012 4:15:27 PM

Electropherogram Summary Continued ...



Overall Results for sample 7 : sample 7

Number of peaks found: 5 Corr. Area 1: 975.0
 Noise: 0.3

Peak table for sample 7 : sample 7

Peak	Size [bp]	Conc. [pg/μl]	Molarity [pmol/l]	Observations
1	35	125.00	5,411.3	Lower Marker
2	277	106.28	581.6	
3	282	49.16	264.3	
4	317	215.69	1,030.8	
5	325	93.46	436.0	
6	342	591.36	2,618.7	
7	10,380	75.00	10.9	Upper Marker

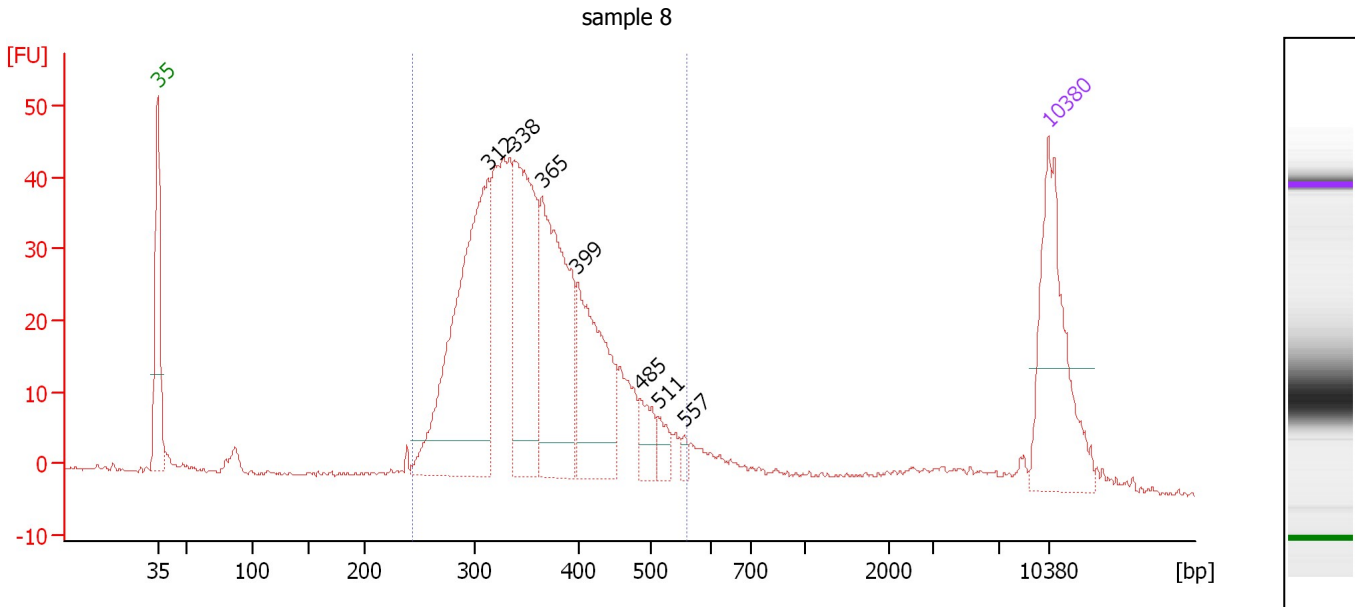
Region table for sample 7 : sample 7

From [bp]	Molarity [pmol/l]	Average Size [bp]	Conc. [pg/μl]	To [bp]	Corr. Area	% of Total	Size distribution in CV [%]	Color
244	4,672.5	354	1,052.09	507	975.0	86	16.8	Blue

Assay Class: High Sensitivity DNA Assay
 Data Path: C:\...ents and Settings\Bioanalyzer\2012-04-05\2012-04-05_004.xad

Created: 4/5/2012 3:28:47 PM
 Modified: 4/5/2012 4:15:27 PM

Electropherogram Summary Continued ...



Overall Results for sample 8 : sample 8

Number of peaks found: 7 Corr. Area 1: 714.5
 Noise: 0.3

Peak table for sample 8 : sample 8

Peak	Size [bp]	Conc. [pg/μl]	Molarity [pmol/l]	Observations
1	35	125.00	5,411.3	Lower Marker
2	312	225.44	1,093.2	
3	338	136.17	609.8	
4	365	143.06	594.2	
5	399	96.91	367.9	
6	485	18.46	57.7	
7	511	11.26	33.4	
8	557	4.44	12.1	
9	10,380	75.00	10.9	Upper Marker

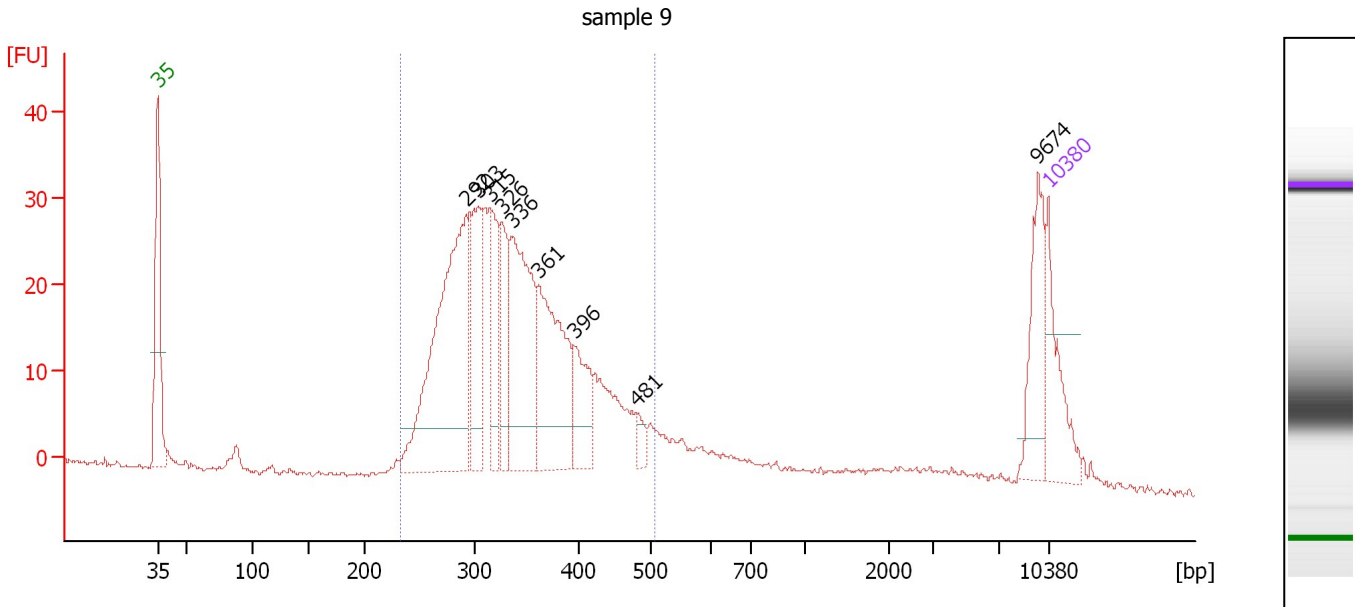
Region table for sample 8 : sample 8

From [bp]	Molarity [pmol/l]	Average Size [bp]	Conc. [pg/μl]	To [bp]	Corr. Area	% of Total	Size distribution in CV [%]	Color
243	3,590.3	362	824.21	559	714.5	87	17.8	Blue

Assay Class: High Sensitivity DNA Assay
 Data Path: C:\...ents and Settings\Bioanalyzer\2012-04-05\2012-04-05_004.xad

Created: 4/5/2012 3:28:47 PM
 Modified: 4/5/2012 4:15:27 PM

Electropherogram Summary Continued ...



Overall Results for sample 9 : sample 9

Number of peaks found: 9 Corr. Area 1: 484.7
 Noise: 0.3

Peak table for sample 9 : sample 9

Peak	Size [bp]	Conc. [pg/μl]	Molarity [pmol/l]	Observations
1	35	125.00	5,411.3	Lower Marker
2	292	466.45	2,421.1	
3	303	145.03	726.0	
4	315	108.63	523.1	
5	326	93.05	432.5	
6	336	245.44	1,106.2	
7	361	218.11	916.2	
8	396	78.65	300.9	
9	481	17.54	55.2	
10	9,674	87.68	13.7	
11	10,380	75.00	10.9	Upper Marker

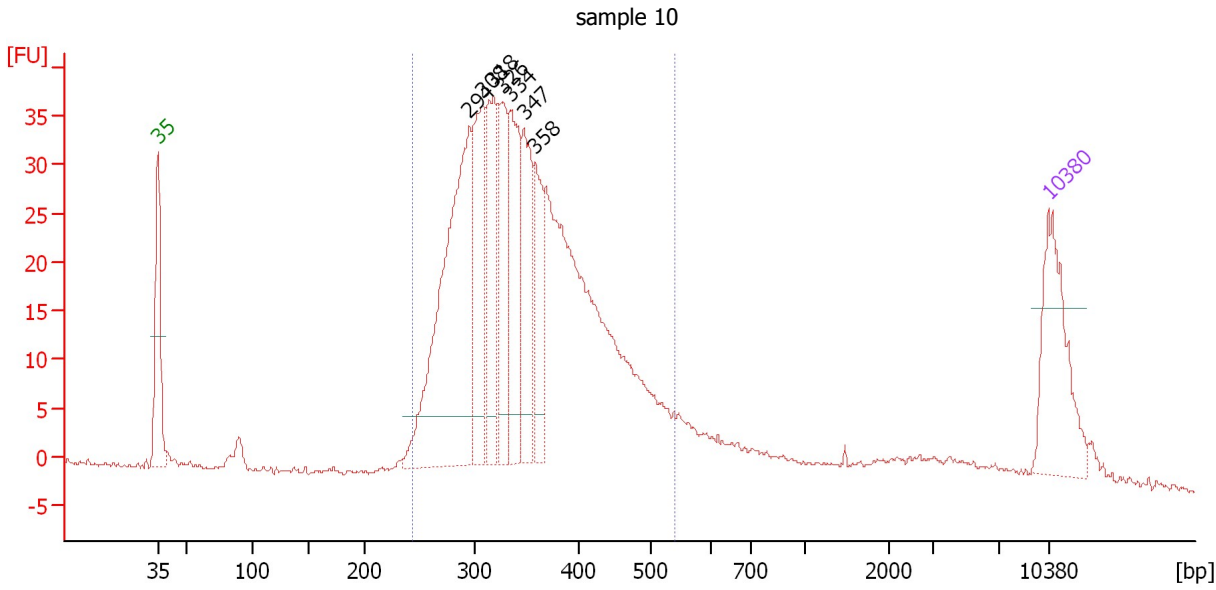
Region table for sample 9 : sample 9

From [bp]	Molarity [pmol/l]	Average Size [bp]	Conc. [pg/μl]	To [bp]	Corr. Area	% of Total	Size distribution in CV [%]	Color
231	7,758.1	340	1,676.03	507	484.7	81	17.4	Blue

Assay Class: High Sensitivity DNA Assay
 Data Path: C:\...ents and Settings\Bioanalyzer\2012-04-05\2012-04-05_004.xad

Created: 4/5/2012 3:28:47 PM
 Modified: 4/5/2012 4:15:27 PM

Electropherogram Summary Continued ...



Overall Results for sample 10 : sample 10

Number of peaks found: 7 Corr. Area 1: 625.8
 Noise: 0.3

Peak table for sample 10 : sample 10

Peak	Size [bp]	Conc. [pg/μl]	Molarity [pmol/l]	Observations
1	35	125.00	5,411.3	Lower Marker
2	294	310.84	1,600.8	
3	308	116.18	571.9	
4	318	105.34	502.5	
5	326	85.24	396.7	
6	334	101.01	458.1	
7	347	91.58	400.0	
8	358	62.92	266.4	
9	10,380	75.00	10.9	Upper Marker

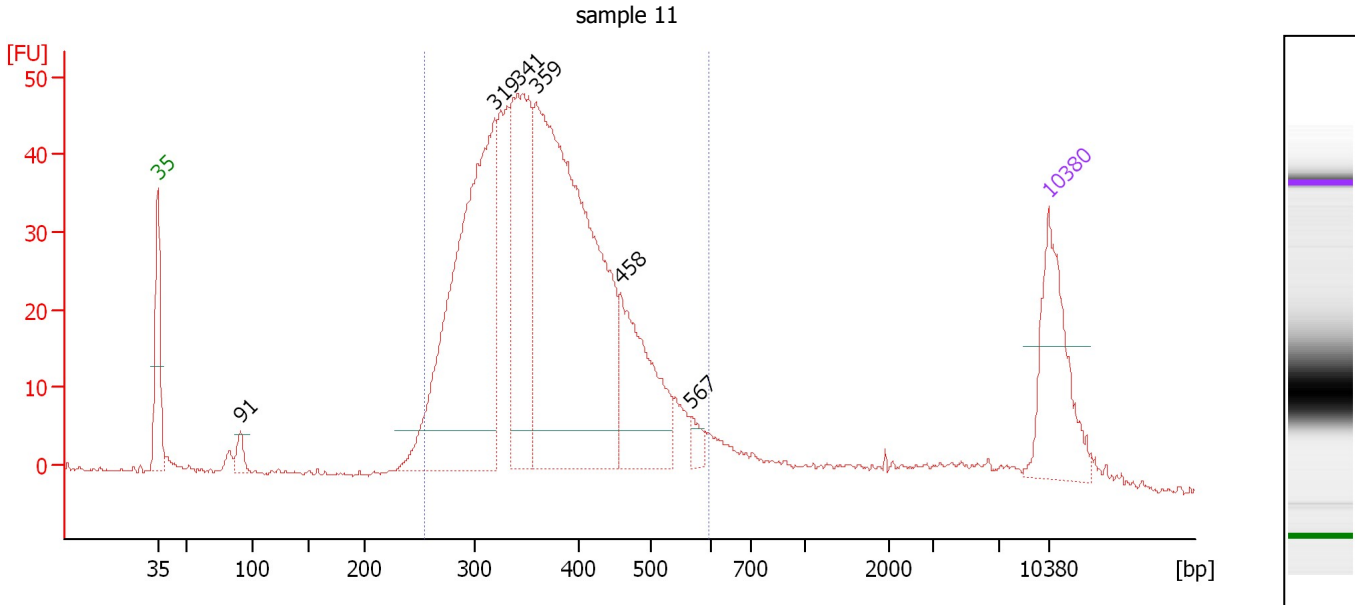
Region table for sample 10 : sample 10

From [bp]	Molarity [pmol/l]	Average Size [bp]	Conc. [pg/μl]	To [bp]	Corr. Area	% of Total	Size distribution in CV [%]	Color
243	6,133.4	353	1,370.06	541	625.8	86	18.2	Blue

Assay Class: High Sensitivity DNA Assay
 Data Path: C:\...ents and Settings\Bioanalyzer\2012-04-05\2012-04-05_004.xad

Created: 4/5/2012 3:28:47 PM
 Modified: 4/5/2012 4:15:27 PM

Electropherogram Summary Continued ...



Overall Results for sample 11 : sample 11

Number of peaks found: 6 Corr. Area 1: 866.8
 Noise: 0.3

Peak table for sample 11 : sample 11

Peak	Size [bp]	Conc. [pg/μl]	Molarity [pmol/l]	Observations
1	35	125.00	5,411.3	Lower Marker
2	91	14.63	242.9	
3	319	397.65	1,891.1	
4	341	191.86	851.7	
5	359	518.30	2,186.9	
6	458	119.30	394.5	
7	567	10.92	29.2	
8	10,380	75.00	10.9	Upper Marker

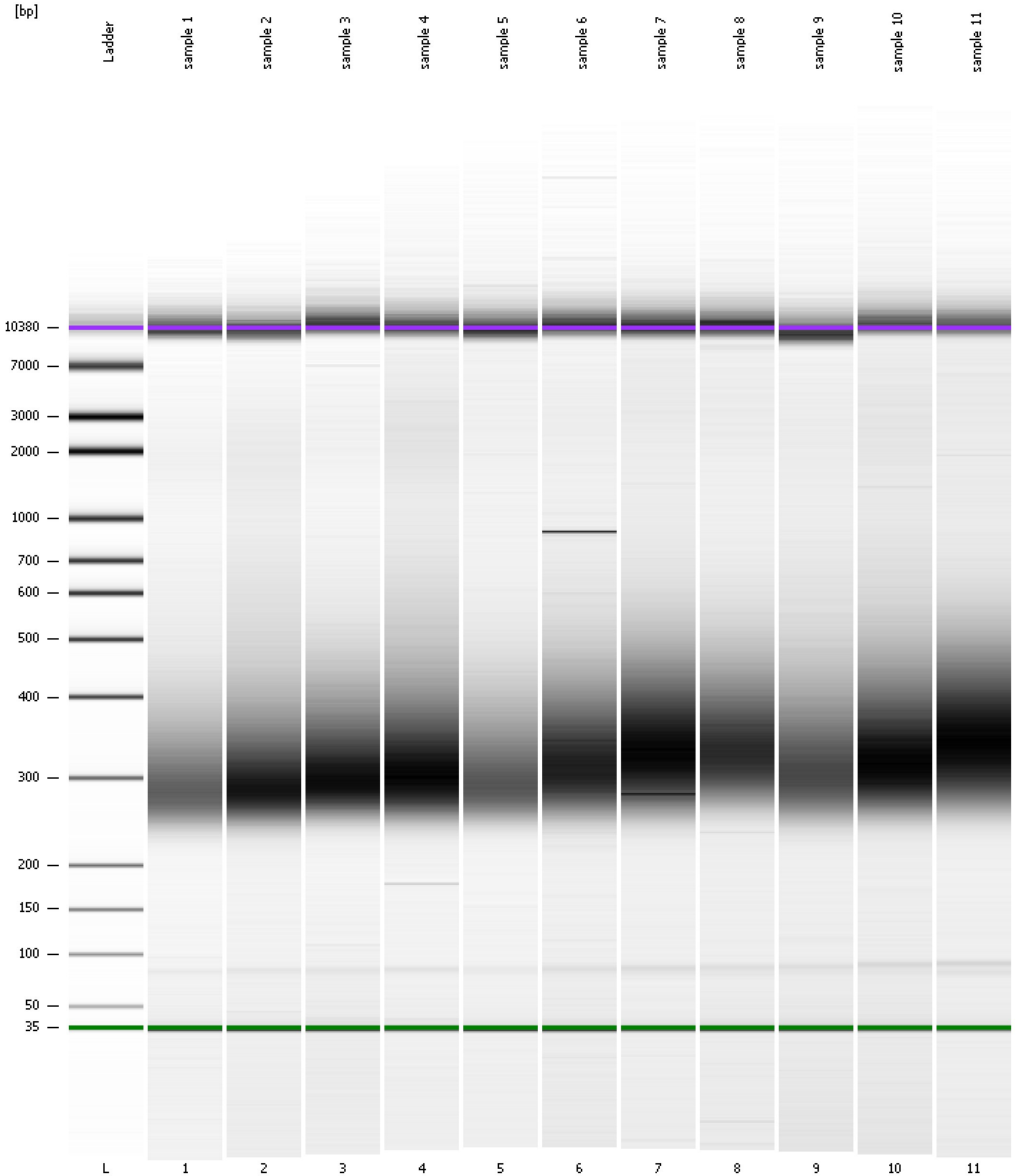
Region table for sample 11 : sample 11

From [bp]	Molarity [pmol/l]	Average Size [bp]	Conc. [pg/μl]	To [bp]	Corr. Area	% of Total	Size distribution in CV [%]	Color
255	5,958.4	374	1,401.39	598	866.8	89	19.4	Blue

Assay Class: High Sensitivity DNA Assay
Data Path: C:\...ents and Settings\Bioanalyzer\2012-04-05\2012-04-05_004.xad

Created: 4/5/2012 3:28:47 PM
Modified: 4/5/2012 4:15:27 PM

Gel Image



Assay Class: High Sensitivity DNA Assay
 Data Path: C:\...ents and Settings\Bioanalyzer\2012-04-05\2012-04-05_004.xad

Created: 4/5/2012 3:28:47 PM
 Modified: 4/5/2012 4:15:27 PM

Run Logbook

Description	Number	Source	Category	Sub Category	Time	Time Zone	User	Host
Run ended on port 1 (Number of wells acquired: 12)		Instrument	Run		4/5/2012 4:10:05 PM	(GMT --07:00) Pacific Standard Time	UC Davis	D8XSMGH1
Run started on port 1 (File: C:\Documents and Settings\Bioanalyzer\2012-04-05\2012-04-05_004.xad)		Instrument	Run		4/5/2012 3:28:53 PM	(GMT --07:00) Pacific Standard Time	UC Davis	D8XSMGH1
Product Number : G2938B		Instrument	Run		4/5/2012 3:28:53 PM	(GMT --07:00) Pacific Standard Time	UC Davis	D8XSMGH1
Name :		Instrument	Run		4/5/2012 3:28:53 PM	(GMT --07:00) Pacific Standard Time	UC Davis	D8XSMGH1
Vendor : Agilent Technologies		Instrument	Run		4/5/2012 3:28:53 PM	(GMT --07:00) Pacific Standard Time	UC Davis	D8XSMGH1
Serial# : DE13701086		Instrument	Run		4/5/2012 3:28:53 PM	(GMT --07:00) Pacific Standard Time	UC Davis	D8XSMGH1
Firmware : C.01.069		Instrument	Run		4/5/2012 3:28:53 PM	(GMT --07:00) Pacific Standard Time	UC Davis	D8XSMGH1
Cartridge : Electrode		Instrument	Run		4/5/2012 3:28:53 PM	(GMT --07:00) Pacific Standard Time	UC Davis	D8XSMGH1