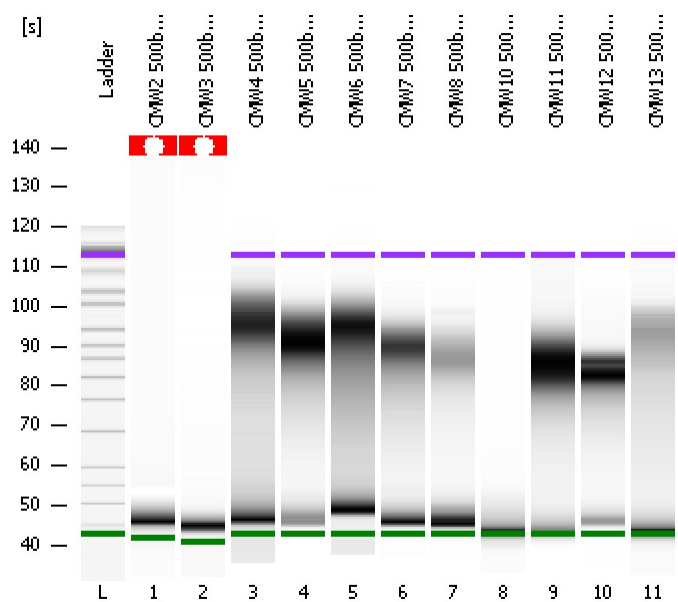


Assay Class: High Sensitivity DNA Assay  
Data Path: C:\...ents and Settings\Bioanalyzer\2012-04-06\2012-04-06\_001.xad

Created: 4/6/2012 9:11:58 AM  
Modified: 4/6/2012 10:17:31 AM

### Electrophoresis File Run Summary



**Instrument Information:**  
Instrument Name: DE13701086      Firmware: C.01.069  
Serial#: DE13701086      Type: G2938B

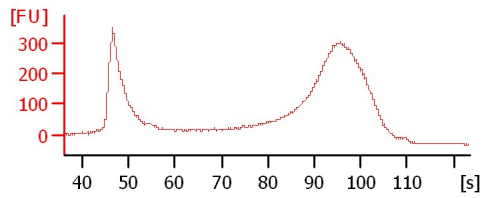
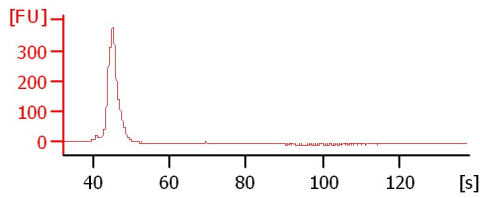
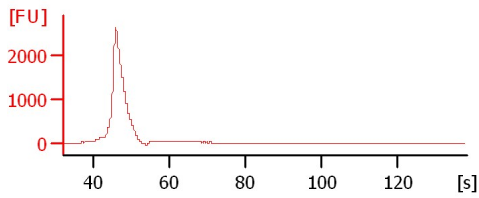
**Assay Information:**  
Assay Origin Path: C:\Program Files\Agilent\2100 bioanalyzer\2100 expert\assays\dsDNA\High Sensitivity DNA.xsy  
Assay Class: High Sensitivity DNA Assay  
Version: 1.03  
Assay Comments: Copyright © 2003-2010 Agilent Technologies

**Chip Information:**  
Chip Lot #:        
Reagent Kit Lot #:        
Chip Comments:     

CMW2 500bp Soni

CMW3 500bp Soni

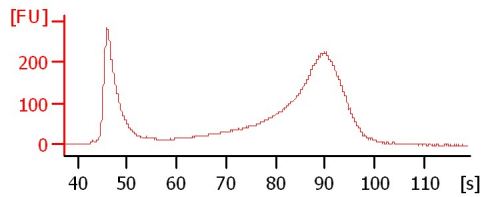
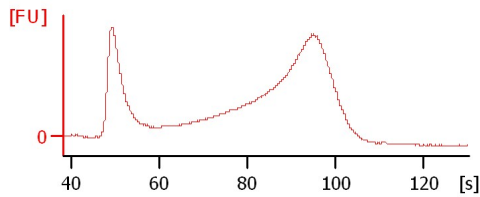
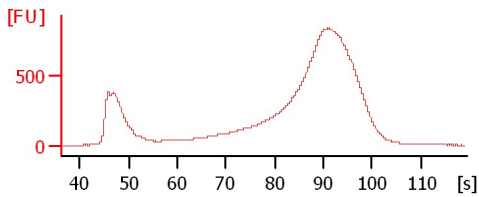
CMW4 500bp Soni



CMW5 500bp Soni

CMW6 500bp Soni

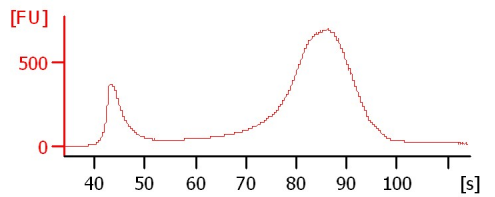
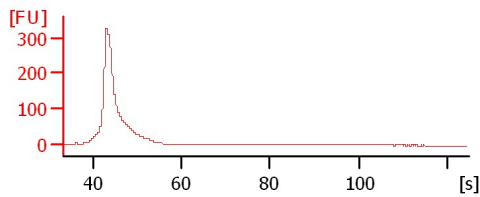
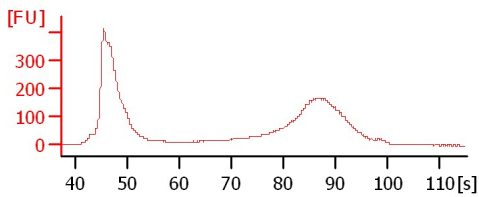
CMW7 500bp Soni



CMW8 500bp Soni

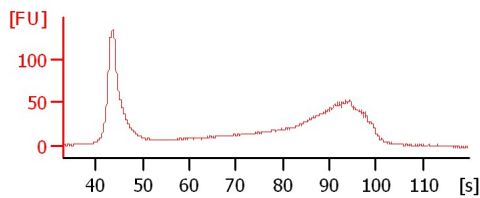
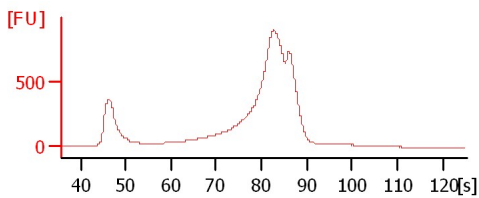
CMW10 500bp Soni

CMW11 500bp Soni



CMW12 500bp Soni

CMW13 500bp Soni



Assay Class: High Sensitivity DNA Assay  
Data Path: C:\...ents and Settings\Bioanalyzer\2012-04-06\2012-04-06\_001.xad

Created: 4/6/2012 9:11:58 AM  
Modified: 4/6/2012 10:17:31 AM

**Electrophoresis File Run Summary (Chip Summary)**

Sample Name	Sample Comment	Rest. Digest	Status	Observation	Result Label	Result Color
CMW2 500bp Soni		<input type="checkbox"/>	✓			
CMW3 500bp Soni		<input type="checkbox"/>	✓			
CMW4 500bp Soni		<input type="checkbox"/>	✓			
CMW5 500bp Soni		<input type="checkbox"/>	✓			
CMW6 500bp Soni		<input type="checkbox"/>	✓			
CMW7 500bp Soni		<input type="checkbox"/>	✓			
CMW8 500bp Soni		<input type="checkbox"/>	✓			
CMW10 500bp Soni		<input type="checkbox"/>	✓			
CMW11 500bp Soni		<input type="checkbox"/>	✓			
CMW12 500bp Soni		<input type="checkbox"/>	✓			
CMW13 500bp Soni		<input type="checkbox"/>	✓			
Ladder		<input type="checkbox"/>	✓			

**Chip Lot #**

**Reagent Kit Lot #**

**Chip Comments :**

Assay Class: High Sensitivity DNA Assay  
Data Path: C:\...ents and Settings\Bioanalyzer\2012-04-06\2012-04-06\_001.xad

Created: 4/6/2012 9:11:58 AM  
Modified: 4/6/2012 10:17:31 AM

**Electrophoresis Assay Details**

**General Analysis Settings**

Number of Available Sample and Ladder Wells (Max.) : 12  
Minimum Visible Range [s] : 32  
Maximum Visible Range [s] : 138  
Start Analysis Time Range [s] : 33  
End Analysis Time Range [s] : 137.5  
Ladder Concentration [pg/μl] : 1950  
Uses Standard Area for Ladder Fragments  
Lower Marker Concentration [pg/μl] : 125  
Upper Marker Concentration [pg/μl] : 75  
Used Upper Marker for Quantitation  
Standard Curve Fit is Point to Point  
Show Data Aligned to Lower and Upper Marker

**Integrator Settings**

Integration Start Time [s] : 33.05  
Integration End Time [s] : 137  
Slope Threshold : 0.8  
Height Threshold [FU] : 5  
Area Threshold : 0.1  
Width Threshold [s] : 0.6  
Baseline Plateau [s] : 0.5

**Filter Settings**

Filter Width [s] : 0.5  
Polynomial Order : 4

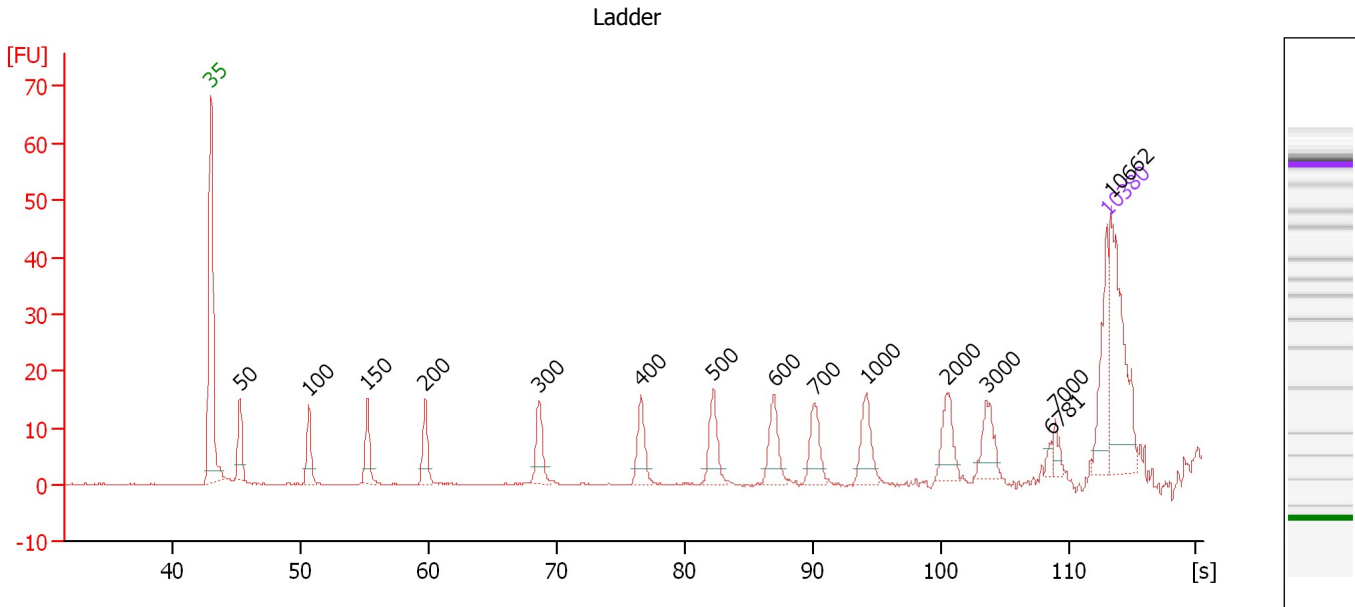
**Ladder**

Ladder Peak	Size	Area
1	35	160
2	50	210
3	100	208
4	150	221
5	200	242
6	300	270
7	400	305
8	500	306
9	600	336
10	700	321
11	1000	366
12	2000	413
13	3000	411
14	7000	400
15	10380	214

Assay Class: High Sensitivity DNA Assay  
 Data Path: C:\...ents and Settings\Bioanalyzer\2012-04-06\2012-04-06\_001.xad

Created: 4/6/2012 9:11:58 AM  
 Modified: 4/6/2012 10:17:31 AM

**Electropherogram Summary**



**Overall Results for Ladder**

Noise: 0.2

**Peak table for Ladder**

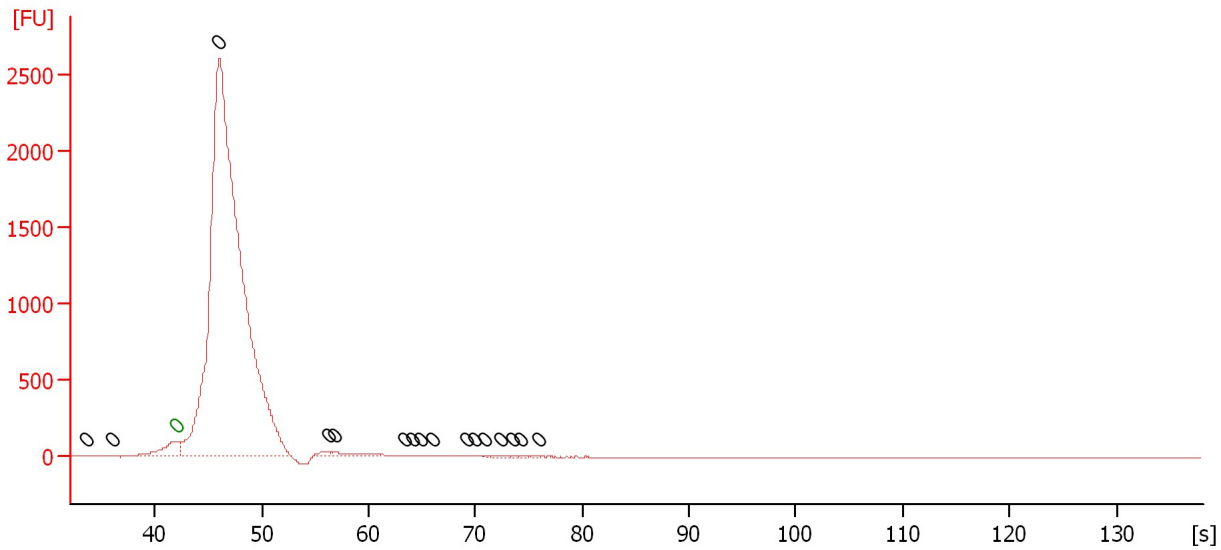
Peak	Size [bp]	Conc. [pg/μl]	Molarity [pmol/l]	Observations
1	35	125.00	5,411.3	Lower Marker
2	50	150.00	4,545.5	Ladder Peak
3	100	150.00	2,272.7	Ladder Peak
4	150	150.00	1,515.2	Ladder Peak
5	200	150.00	1,136.4	Ladder Peak
6	300	150.00	757.6	Ladder Peak
7	400	150.00	568.2	Ladder Peak
8	500	150.00	454.5	Ladder Peak
9	600	150.00	378.8	Ladder Peak
10	700	150.00	324.7	Ladder Peak
11	1,000	150.00	227.3	Ladder Peak
12	2,000	150.00	113.6	Ladder Peak
13	3,000	150.00	75.8	Ladder Peak
14	6,781	0.00	0.0	
15	7,000	150.00	32.5	Ladder Peak
16	10,380	75.00	10.9	Upper Marker
17	10,662	0.00	0.0	

Assay Class: High Sensitivity DNA Assay  
 Data Path: C:\...ents and Settings\Bioanalyzer\2012-04-06\2012-04-06\_001.xad

Created: 4/6/2012 9:11:58 AM  
 Modified: 4/6/2012 10:17:31 AM

**Electropherogram Summary Continued ...**

CMW2 500bp Soni



**Setpoint Deviations for sample 1 : CMW2 500bp Soni**

Height Threshold [FU] : 0.01

**Overall Results for sample 1 : CMW2 500bp Soni**

Number of peaks found: 16                      Noise: 1.0

**Peak table for sample 1 : CMW2 500bp Soni**

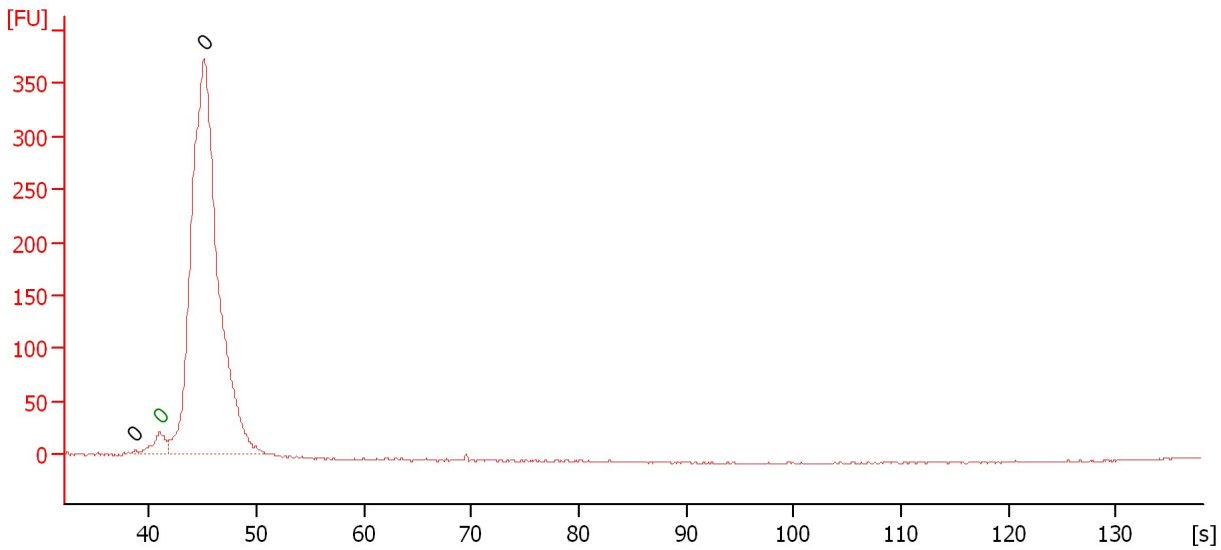
Peak	Size [bp]	Conc. [pg/μl]	Molarity [pmol/l]	Observations
1	0	0.00	0.0	
2	0	0.00	0.0	
3	0	0.00	0.0	Lower Marker
4	0	0.00	0.0	
5	0	0.00	0.0	
6	0	0.00	0.0	
7	0	0.00	0.0	
8	0	0.00	0.0	
9	0	0.00	0.0	
10	0	0.00	0.0	
11	0	0.00	0.0	
12	0	0.00	0.0	
13	0	0.00	0.0	
14	0	0.00	0.0	
15	0	0.00	0.0	
16	0	0.00	0.0	
17	0	0.00	0.0	

Assay Class: High Sensitivity DNA Assay  
Data Path: C:\...ents and Settings\Bioanalyzer\2012-04-06\2012-04-06\_001.xad

Created: 4/6/2012 9:11:58 AM  
Modified: 4/6/2012 10:17:31 AM

**Electropherogram Summary Continued ...**

CMW3 500bp Soni



**Setpoint Deviations for sample 2 : CMW3 500bp Soni**

Height Threshold [FU] : 0.1

**Overall Results for sample 2 : CMW3 500bp Soni**

Number of peaks found: 2                      Noise: 0.4

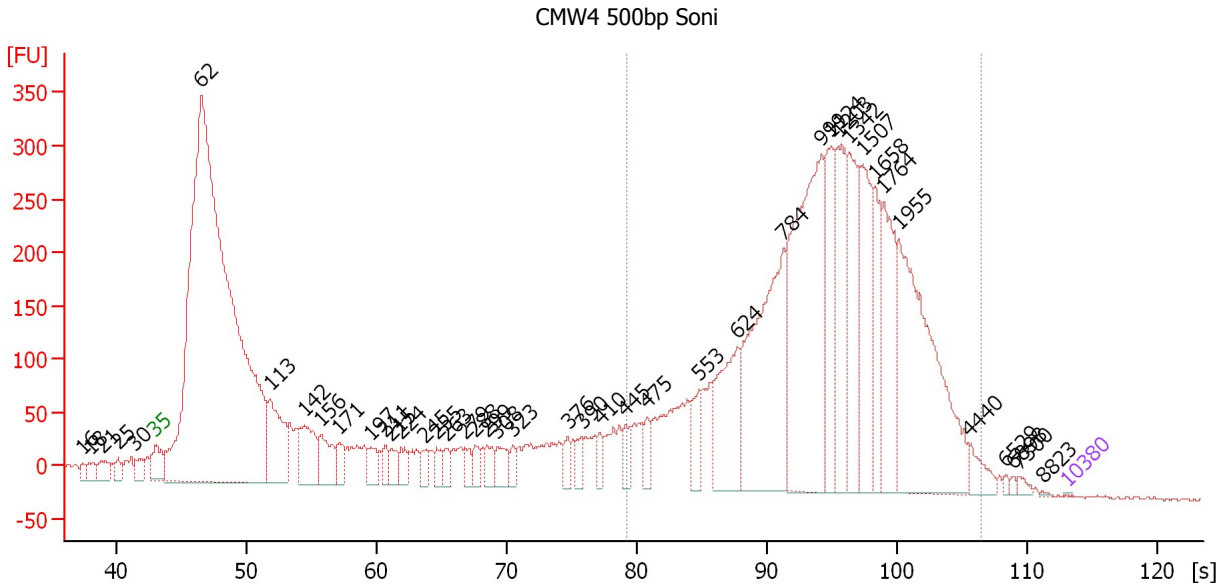
**Peak table for sample 2 : CMW3 500bp Soni**

Peak	Size [bp]	Conc. [pg/μl]	Molarity [pmol/l]	Observations
1	0	0.00	0.0	
2	0	0.00	0.0	Lower Marker
3	0	0.00	0.0	

Assay Class: High Sensitivity DNA Assay  
 Data Path: C:\...ents and Settings\Bioanalyzer\2012-04-06\2012-04-06\_001.xad

Created: 4/6/2012 9:11:58 AM  
 Modified: 4/6/2012 10:17:31 AM

**Electropherogram Summary Continued ...**



**Setpoint Deviations for sample 3 : CMW4 500bp Soni**

Height Threshold [FU] : 0.1

**Overall Results for sample 3 : CMW4 500bp Soni**

Number of peaks found: 43                      Corr. Area 1: 5,390.7  
 Noise: 1.4

**Peak table for sample 3 : CMW4 500bp Soni**


Peak	Size [bp]	Conc. [pg/μl]	Molarity [pmol/l]	Observations
1	16	0.00	0.0	
2	18	0.00	0.0	
3	21	0.00	0.0	
4	25	0.00	0.0	
5	30	0.00	0.0	
6	35	125.00	5,411.3	Lower Marker
7	62	889,470.81	21,762,802.0	
8	113	63,060.92	848,923.4	
9	142	41,266.00	440,753.4	
10	156	26,898.88	261,441.9	
11	171	13,214.04	116,837.1	
12	197	13,398.88	102,896.6	
13	211	8,464.35	60,869.5	
14	215	9,542.69	67,146.5	
15	224	10,357.05	70,012.5	
16	245	9,444.66	58,408.0	
17	255	8,828.37	52,414.5	
18	263	6,730.63	38,831.4	
19	279	7,514.20	40,829.3	
20	288	7,252.37	38,138.3	
21	299	10,081.71	51,124.9	
22	308	13,005.89	63,989.5	

Assay Class: High Sensitivity DNA Assay  
 Data Path: C:\...ents and Settings\Bioanalyzer\2012-04-06\2012-04-06\_001.xad


Created: 4/6/2012 9:11:58 AM  
 Modified: 4/6/2012 10:17:31 AM

**Electropherogram Summary Continued ...**

**... Peak table for sample 3 : CMW4 500bp Soni**

Peak	Size [bp]	Conc. [pg/µl]	Molarity [pmol/l]	Observations
23	323	6,211.59	29,141.6	
24	376	8,097.34	32,608.5	
25	390	7,657.17	29,771.6	
26	410	6,953.16	25,721.0	
27	445	8,956.59	30,509.5	
28	475	8,441.13	26,932.6	
29	553	15,328.51	41,980.3	
30	624	51,764.95	125,773.9	
31	784	120,209.43	232,456.6	
32	999	138,754.08	210,368.1	
33	1,124	46,395.47	62,544.0	
34	1,203	50,118.47	63,117.4	
35	1,342	45,247.37	51,099.1	
36	1,507	47,696.39	47,968.5	
37	1,658	27,619.59	25,235.7	
38	1,764	45,067.57	38,713.6	
39	1,955	109,854.66	85,133.0	
40	4,440	8,755.30	2,987.5	
41	6,529	1,213.59	281.6	
42	6,898	1,126.89	247.5	
43	7,300	2,204.31	457.5	
44	8,823	318.50	54.7	
45	 10,380	75.00	10.9	Upper Marker

**Region table for sample 3 : CMW4 500bp Soni**

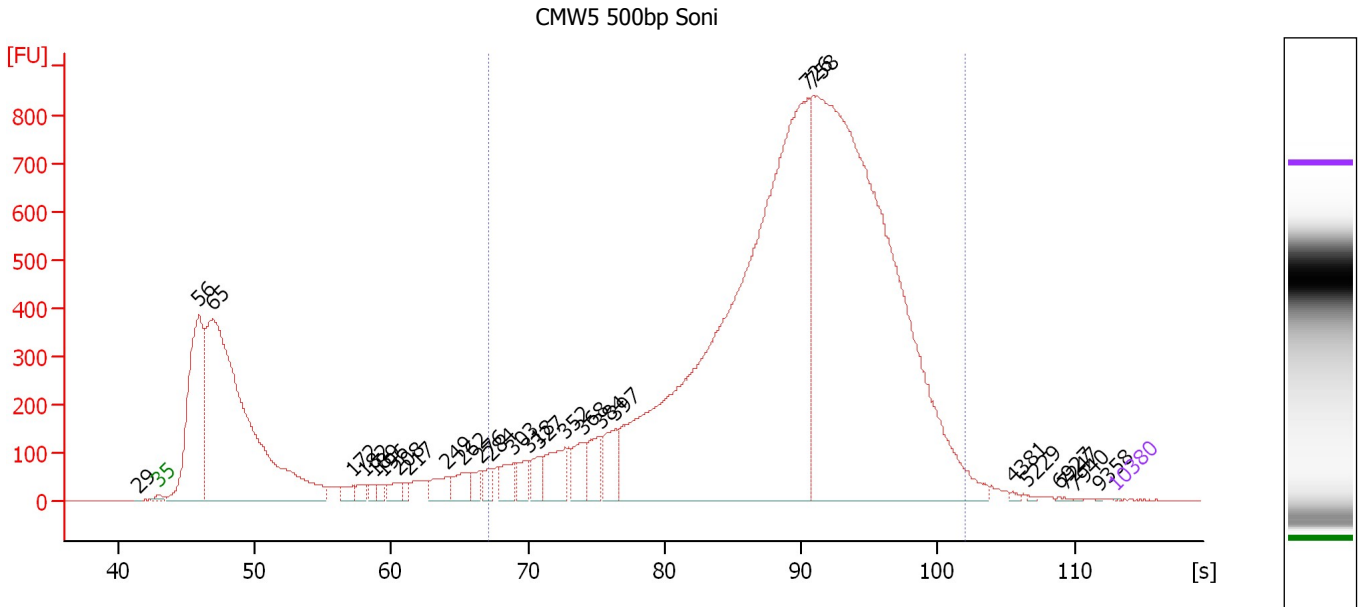
From [bp]	Molarity [pmol/l]	Average Size [bp]	Conc. [pg/µl]	To [bp]	Corr. Area	% of Total	Size distribution in CV [%]	Color
448	1,264,117.4	1,337	788,898.69	5,150	5,390.7	52	59.0	



Assay Class: High Sensitivity DNA Assay  
 Data Path: C:\...ents and Settings\Bioanalyzer\2012-04-06\2012-04-06\_001.xad

Created: 4/6/2012 9:11:58 AM  
 Modified: 4/6/2012 10:17:31 AM

**Electropherogram Summary Continued ...**



**Setpoint Deviations for sample 4 : CMW5 500bp Soni**

Height Threshold [FU] : 0.1

**Overall Results for sample 4 : CMW5 500bp Soni**

Number of peaks found: 28                      Corr. Area 1: 16,041.5  
 Noise: 0.9

**Peak table for sample 4 : CMW5 500bp Soni**


Peak	Size [bp]	Conc. [pg/μl]	Molarity [pmol/l]	Observations
1	29	0.00	0.0	
2	35	125.00	5,411.3	Lower Marker
3	56	472,525.78	12,789,699.0	
4	65	1,210,626.88	28,008,428.0	
5	172	21,011.96	185,306.3	
6	182	16,644.84	138,739.1	
7	189	11,344.51	90,874.4	
8	196	11,306.57	87,366.2	
9	208	22,117.32	160,816.9	
10	217	10,266.88	71,760.8	
11	249	36,725.99	223,454.9	
12	262	35,997.61	208,306.4	
13	276	21,423.59	117,432.9	
14	284	21,753.62	115,907.5	
15	303	38,663.34	193,172.1	
16	318	33,030.79	157,601.4	
17	327	32,594.50	151,064.4	
18	352	67,826.83	292,316.7	
19	368	45,139.07	185,935.1	
20	384	51,203.74	202,243.7	
21	397	57,275.26	218,368.1	
22	726	1,500,589.88	3,132,387.5	

Assay Class: High Sensitivity DNA Assay  
 Data Path: C:\...ents and Settings\Bioanalyzer\2012-04-06\2012-04-06\_001.xad


Created: 4/6/2012 9:11:58 AM  
 Modified: 4/6/2012 10:17:31 AM

### Electropherogram Summary Continued ...

#### ... Peak table for sample 4 : CMW5 500bp Soni

Peak	Size [bp]	Conc. [pg/μl]	Molarity [pmol/l]	Observations
23	758	1,492,152.50	2,983,798.0	
24	4,381	1,860.51	643.5	
25	5,229	1,192.80	345.6	
26	6,927	433.70	94.9	
27	7,247	466.37	97.5	
28	7,940	304.14	58.0	
29	9,358	139.28	22.6	
30	 10,380	75.00	10.9	Upper Marker

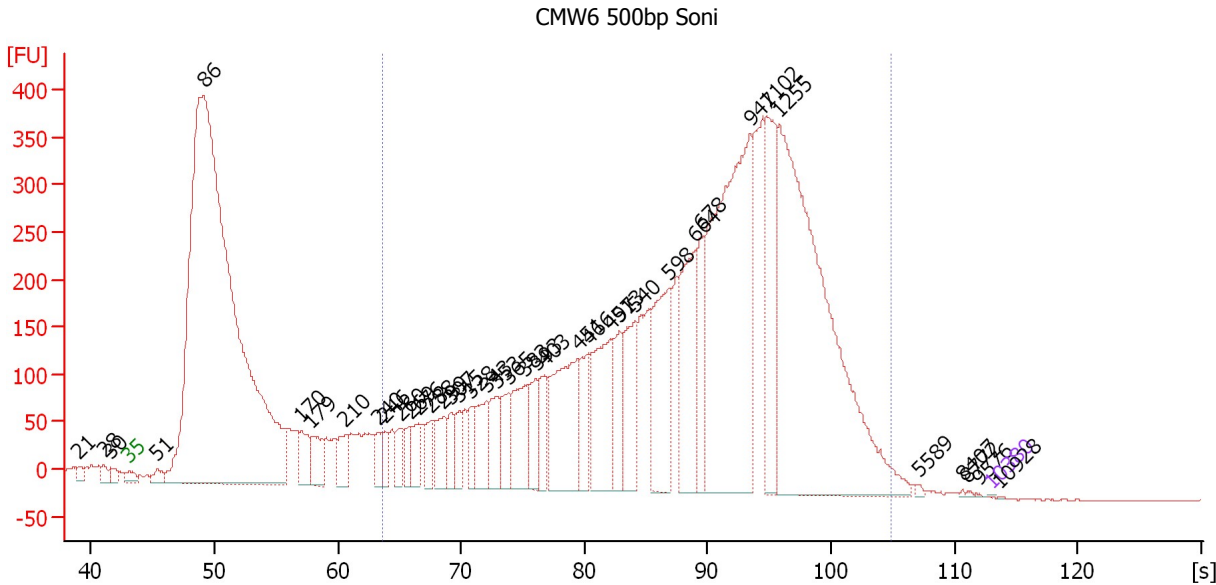
#### Region table for sample 4 : CMW5 500bp Soni

From [bp]	Molarity [pmol/l]	Average Size [bp]	Conc. [pg/μl]	To [bp]	Corr. Area	% of Total	Size distribution in CV [%]	Color
283	7,809,265.5	828	3,279,759.50	2,501	16,041.5	72	48.0	

Assay Class: High Sensitivity DNA Assay  
 Data Path: C:\...ents and Settings\Bioanalyzer\2012-04-06\2012-04-06\_001.xad

Created: 4/6/2012 9:11:58 AM  
 Modified: 4/6/2012 10:17:31 AM

**Electropherogram Summary Continued ...**



**Setpoint Deviations for sample 5 : CMW6 500bp Soni**

Height Threshold [FU] : 0.1

**Overall Results for sample 5 : CMW6 500bp Soni**

Number of peaks found: 40                      Corr. Area 1: 8,958.2  
 Noise: 0.8

**Peak table for sample 5 : CMW6 500bp Soni**


Peak	Size [bp]	Conc. [pg/μl]	Molarity [pmol/l]	Observations
1	21	0.00	0.0	
2	28	0.00	0.0	
3	30	0.00	0.0	
4	35	125.00	5,411.3	Lower Marker
5	51	11,191.78	333,799.0	
6	86	1,359,099.63	24,036,990.0	
7	170	29,868.41	266,190.1	
8	179	30,339.63	256,608.8	
9	210	24,975.62	180,549.8	
10	240	16,421.58	103,694.2	
11	246	15,322.20	94,439.7	
12	260	16,723.48	97,448.1	
13	269	15,671.11	88,161.9	
14	276	21,106.12	115,791.0	
15	288	20,280.23	106,719.4	
16	299	31,163.97	158,078.7	
17	307	18,958.49	93,478.3	
18	315	17,751.58	85,254.0	
19	328	18,405.33	85,149.9	
20	343	35,384.33	156,396.4	
21	353	31,065.28	133,477.6	
22	365	31,374.50	130,168.1	

Assay Class: High Sensitivity DNA Assay  
 Data Path: C:\...ents and Settings\Bioanalyzer\2012-04-06\2012-04-06\_001.xad


Created: 4/6/2012 9:11:58 AM  
 Modified: 4/6/2012 10:17:31 AM

**Electropherogram Summary Continued ...**

**... Peak table for sample 5 : CMW6 500bp Soni**

Peak	Size [bp]	Conc. [pg/µl]	Molarity [pmol/l]	Observations
23	383	48,920.18	193,690.9	
24	393	28,706.42	110,656.7	
25	403	27,809.05	104,669.7	
26	451	96,829.91	325,609.6	
27	466	34,947.59	113,611.9	
28	497	79,351.40	241,884.9	
29	513	40,937.18	120,926.4	
30	540	53,819.82	150,943.0	
31	598	84,456.00	214,129.5	
32	664	89,315.38	203,918.8	
33	678	40,388.84	90,304.4	
34	947	274,209.72	438,533.3	
35	1,102	77,268.68	106,254.7	
36	1,255	354,834.47	428,362.3	
37	5,589	1,332.59	361.3	
38	8,407	523.66	94.4	
39	8,772	577.04	99.7	
40	9,576	409.70	64.8	
41	 10,380	75.00	10.9	Upper Marker
42	10,928	0.00	0.0	

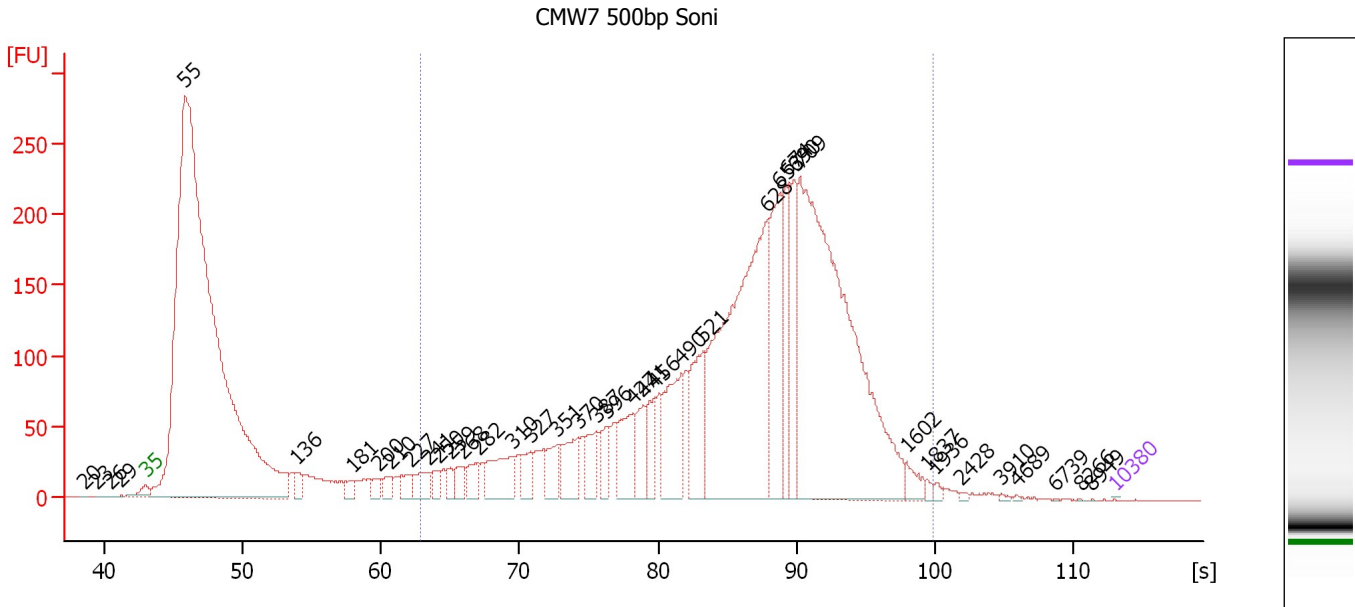
**Region table for sample 5 : CMW6 500bp Soni**

From [bp]	Molarity [pmol/l]	Average Size [bp]	Conc. [pg/µl]	To [bp]	Corr. Area	% of Total	Size distribution in CV [%]	Color
243	4,480,880.0	927	1,735,441.88	3,931	8,958.2	66	62.4	

Assay Class: High Sensitivity DNA Assay  
 Data Path: C:\...ents and Settings\Bioanalyzer\2012-04-06\2012-04-06\_001.xad

Created: 4/6/2012 9:11:58 AM  
 Modified: 4/6/2012 10:17:31 AM

**Electropherogram Summary Continued ...**



**Setpoint Deviations for sample 6 : CMW7 500bp Soni**

Height Threshold [FU] : 0.1

**Overall Results for sample 6 : CMW7 500bp Soni**

Number of peaks found: 40                      Corr. Area 1: 4,232.9  
 Noise: 0.5

**Peak table for sample 6 : CMW7 500bp Soni**


Peak	Size [bp]	Conc. [pg/μl]	Molarity [pmol/l]	Observations
1	20	0.00	0.0	
2	23	0.00	0.0	
3	26	0.00	0.0	
4	29	0.00	0.0	
5	35	125.00	5,411.3	Lower Marker
6	55	1,716,361.75	47,074,740.0	
7	136	15,218.11	169,031.5	
8	181	10,539.81	88,348.8	
9	200	10,452.87	79,018.1	
10	210	12,098.29	87,282.8	
11	227	16,296.96	108,983.1	
12	241	21,997.53	138,077.8	
13	250	11,288.94	68,510.9	
14	259	10,392.28	60,737.5	
15	268	17,254.98	97,408.9	
16	282	21,548.27	115,817.8	
17	310	48,980.81	239,068.6	
18	327	21,233.29	98,251.9	
19	351	27,299.29	117,918.2	
20	370	41,260.39	169,084.3	
21	387	30,065.09	117,638.3	
22	396	19,713.55	75,338.0	

Assay Class: High Sensitivity DNA Assay  
 Data Path: C:\...ents and Settings\Bioanalyzer\2012-04-06\2012-04-06\_001.xad


Created: 4/6/2012 9:11:58 AM  
 Modified: 4/6/2012 10:17:31 AM

**Electropherogram Summary Continued ...**

**... Peak table for sample 6 : CMW7 500bp Soni**

Peak	Size [bp]	Conc. [pg/µl]	Molarity [pmol/l]	Observations
23	427	50,623.71	179,469.9	
24	441	31,001.86	106,472.8	
25	456	31,400.03	104,414.5	
26	490	79,463.42	245,659.5	
27	521	74,057.99	215,465.0	
28	628	354,323.25	855,238.6	
29	653	112,311.51	260,721.2	
30	674	63,942.63	143,763.6	
31	690	65,110.27	142,947.2	
32	709	516,689.41	1,104,448.1	
33	1,602	11,065.10	10,467.4	
34	1,837	2,998.21	2,472.6	
35	1,936	2,843.71	2,225.1	
36	2,428	1,304.41	814.1	
37	3,910	1,027.06	398.0	
38	4,689	646.50	208.9	
39	6,739	129.96	29.2	
40	8,266	121.70	22.3	
41	8,949	80.06	13.6	
42	 10,380	75.00	10.9	Upper Marker

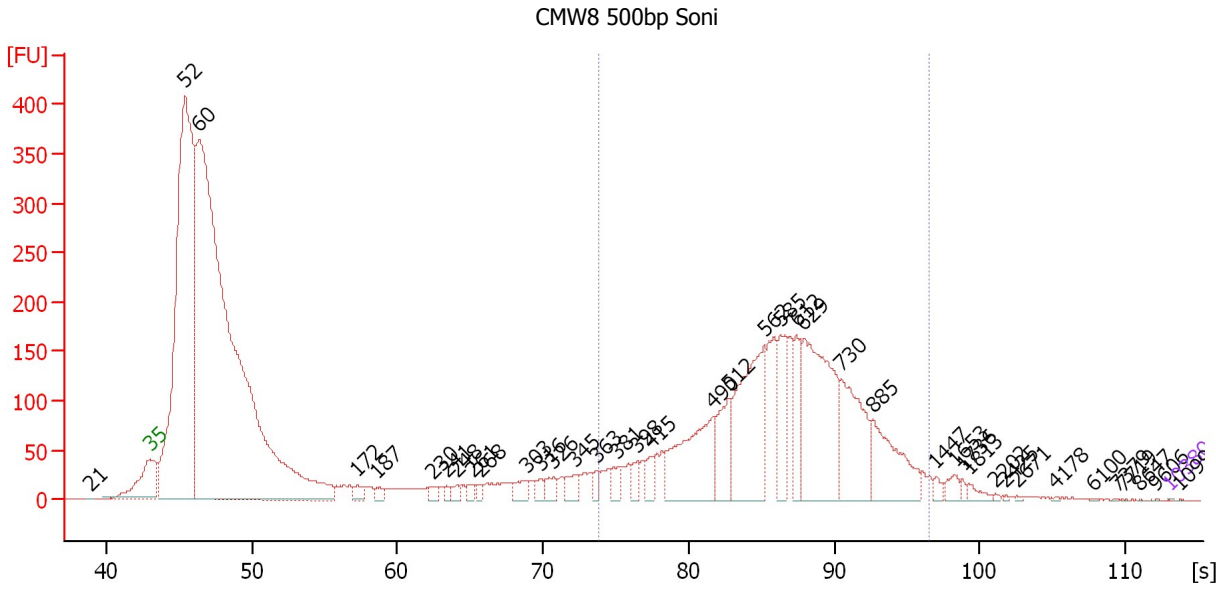
**Region table for sample 6 : CMW7 500bp Soni**

From [bp]	Molarity [pmol/l]	Average Size [bp]	Conc. [pg/µl]	To [bp]	Corr. Area	% of Total	Size distribution in CV [%]	Color
235	5,059,436.0	660	1,770,037.38	1,902	4,232.9	59	40.4	

Assay Class: High Sensitivity DNA Assay  
Data Path: C:\...ents and Settings\Bioanalyzer\2012-04-06\2012-04-06\_001.xad

Created: 4/6/2012 9:11:58 AM  
Modified: 4/6/2012 10:17:31 AM

**Electropherogram Summary Continued ...**



**Setpoint Deviations for sample 7 : CMW8 500bp Soni**

Height Threshold [FU] : 0.1

**Overall Results for sample 7 : CMW8 500bp Soni**

Number of peaks found: 40                      Corr. Area 1: 2,785.9  
Noise: 0.8

**Peak table for sample 7 : CMW8 500bp Soni**

Peak	Size [bp]	Conc. [pg/μl]	Molarity [pmol/l]	Observations
1	21	0.00	0.0	
2	35	125.00	5,411.3	Lower Marker
3	52	633,099.00	18,603,148.0	
4	60	1,122,926.75	28,127,544.0	
5	172	7,282.11	64,178.3	
6	187	5,094.01	41,190.0	
7	230	4,793.84	31,545.1	
8	241	4,030.37	25,335.3	
9	248	5,009.49	30,544.6	
10	261	4,517.73	26,233.3	
11	268	4,294.74	24,282.6	
12	303	9,876.54	49,367.8	
13	316	6,522.52	31,312.6	
14	326	8,442.76	39,265.2	
15	345	9,308.26	40,854.2	
16	363	5,766.40	24,082.7	
17	381	8,666.52	34,438.5	
18	398	7,935.13	30,177.6	
19	415	10,513.56	38,404.1	
20	490	74,668.53	231,095.8	
21	512	36,017.80	106,505.4	
22	562	95,600.86	257,864.4	

Assay Class: High Sensitivity DNA Assay  
 Data Path: C:\...ents and Settings\Bioanalyzer\2012-04-06\2012-04-06\_001.xad


Created: 4/6/2012 9:11:58 AM  
 Modified: 4/6/2012 10:17:31 AM

**Electropherogram Summary Continued ...**

**... Peak table for sample 7 : CMW8 500bp Soni**

Peak	Size [bp]	Conc. [pg/μl]	Molarity [pmol/l]	Observations
23	585	32,812.56	85,005.6	
24	612	26,389.96	65,303.0	
25	629	110,658.30	266,589.2	
26	730	62,639.34	129,956.5	
27	885	47,734.70	81,702.0	
28	1,447	3,103.59	3,249.9	
29	1,653	5,164.91	4,733.1	
30	1,736	2,000.70	1,746.2	
31	1,813	3,920.77	3,277.3	
32	2,202	578.48	398.1	
33	2,425	495.79	309.8	
34	2,671	607.04	344.4	
35	4,178	451.07	163.6	
36	6,100	271.83	67.5	
37	7,379	185.52	38.1	
38	7,719	137.22	26.9	
39	8,647	99.15	17.4	
40	9,606	167.71	26.5	
41	10,380	75.00	10.9	Upper Marker
42	10,999	0.00	0.0	

**Region table for sample 7 : CMW8 500bp Soni**

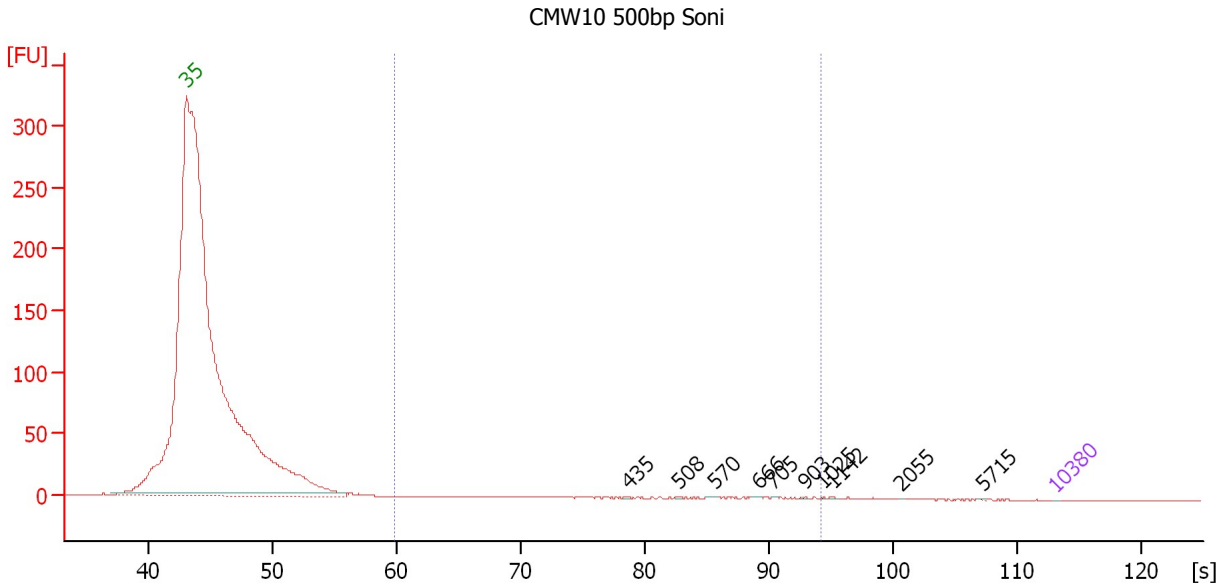
From [bp]	Molarity [pmol/l]	Average Size [bp]	Conc. [pg/μl]	To [bp]	Corr. Area	% of Total	Size distribution in CV [%]	Color
366	1,630,279.3	628	618,033.56	1,379	2,785.9	33	28.2	



Assay Class: High Sensitivity DNA Assay  
 Data Path: C:\...ents and Settings\Bioanalyzer\2012-04-06\2012-04-06\_001.xad

Created: 4/6/2012 9:11:58 AM  
 Modified: 4/6/2012 10:17:31 AM

**Electropherogram Summary Continued ...**



**Setpoint Deviations for sample 8 : CMW10 500bp Soni**

Height Threshold [FU] : 0.01

**Overall Results for sample 8 : CMW10 500bp Soni**

Number of peaks found: 10                      Corr. Area 1: 11.4  
 Noise: 0.2

**Peak table for sample 8 : CMW10 500bp Soni**

Peak	Size [bp]	Conc. [pg/μl]	Molarity [pmol/l]	Observations
1	35	125.00	5,411.3	Lower Marker
2	435	442.72	1,540.6	
3	508	350.62	1,045.4	
4	570	620.43	1,650.2	
5	666	520.49	1,183.9	
6	705	154.16	331.2	
7	903	168.99	283.5	
8	1,025	265.17	392.1	
9	1,142	507.02	672.5	
10	2,055	221.41	163.2	
11	5,715	283.20	75.1	
12	10,380	75.00	10.9	Upper Marker

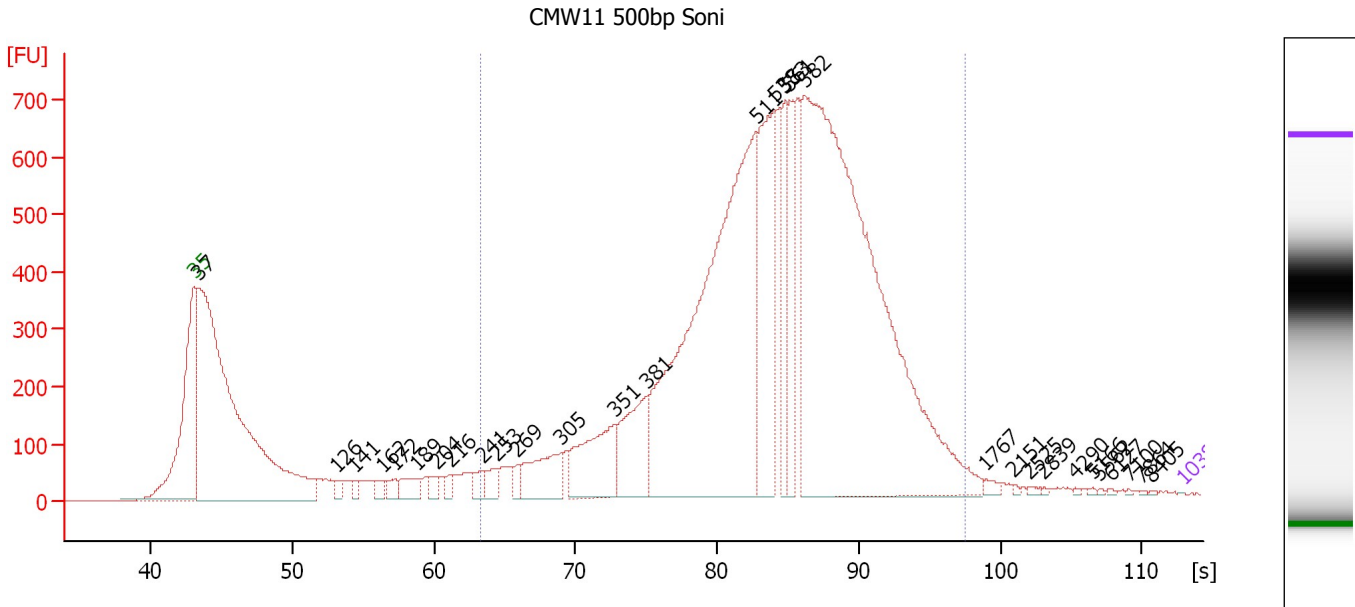
**Region table for sample 8 : CMW10 500bp Soni**

From [bp]	Molarity [pmol/l]	Average Size [bp]	Conc. [pg/μl]	To [bp]	Corr. Area	% of Total	Size distribution in CV [%]	Color
200	34,205.7	663	13,093.27	1,000	11.4	41	25.9	Blue

Assay Class: High Sensitivity DNA Assay  
 Data Path: C:\...ents and Settings\Bioanalyzer\2012-04-06\2012-04-06\_001.xad

Created: 4/6/2012 9:11:58 AM  
 Modified: 4/6/2012 10:17:31 AM

**Electropherogram Summary Continued ...**



**Setpoint Deviations for sample 9 : CMW11 500bp Soni**

Height Threshold [FU] : 0.1

**Overall Results for sample 9 : CMW11 500bp Soni**

Number of peaks found: 30                      Corr. Area 1: 14,057.5  
 Noise: 0.2

**Peak table for sample 9 : CMW11 500bp Soni**


Peak	Size [bp]	Conc. [pg/μl]	Molarity [pmol/l]	Observations
1	35	125.00	5,411.3	Lower Marker
2	37	929,997.00	37,816,228.0	
3	126	10,543.40	126,312.1	
4	141	9,304.04	99,689.8	
5	162	11,694.51	109,478.0	
6	172	13,811.52	121,440.9	
7	189	24,217.60	193,644.0	
8	204	9,680.91	71,823.4	
9	216	9,332.54	65,412.2	
10	241	15,634.79	98,328.3	
11	253	18,209.96	109,112.9	
12	269	12,249.51	68,975.5	
13	305	66,405.98	330,386.8	
14	351	99,577.14	429,605.0	
15	381	89,823.80	357,480.7	
16	511	667,689.06	1,978,270.1	
17	538	184,469.83	519,936.0	
18	553	77,071.95	211,001.6	
19	561	71,389.21	192,954.1	
20	582	870,850.69	2,267,132.3	
21	1,767	4,189.13	3,592.9	
22	2,151	1,265.75	891.4	

Assay Class: High Sensitivity DNA Assay  
 Data Path: C:\...ents and Settings\Bioanalyzer\2012-04-06\2012-04-06\_001.xad


Created: 4/6/2012 9:11:58 AM  
 Modified: 4/6/2012 10:17:31 AM

**Electropherogram Summary Continued ...**

**... Peak table for sample 9 : CMW11 500bp Soni**

Peak	Size [bp]	Conc. [pg/µl]	Molarity [pmol/l]	Observations
23	2,525	1,854.09	1,112.5	
24	2,839	853.96	455.8	
25	4,290	836.06	295.3	
26	5,166	885.77	259.8	
27	5,562	662.24	180.4	
28	6,127	750.20	185.5	
29	7,100	434.87	92.8	
30	7,864	358.39	69.0	
31	8,405	376.20	67.8	
32	 10,380	75.00	10.9	Upper Marker

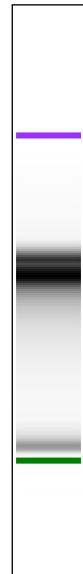
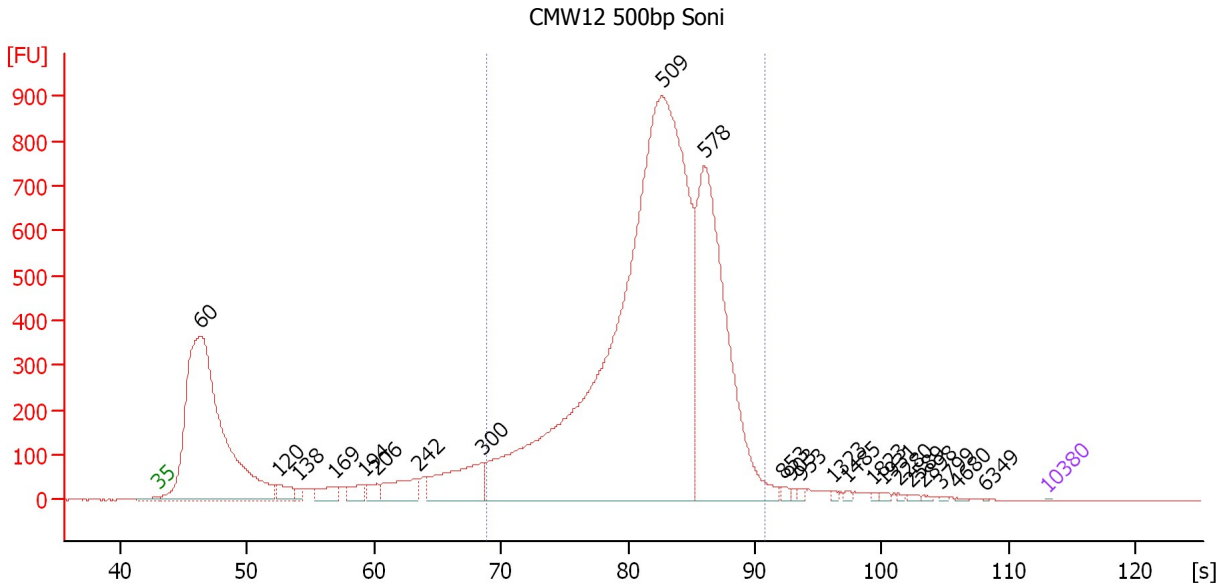
**Region table for sample 9 : CMW11 500bp Soni**

From [bp]	Molarity [pmol/l]	Average Size [bp]	Conc. [pg/µl]	To [bp]	Corr. Area	% of Total	Size distribution in CV [%]	Color
240	6,922,670.0	575	2,297,760.25	1,527	14,057.5	76	32.3	

Assay Class: High Sensitivity DNA Assay  
 Data Path: C:\...ents and Settings\Bioanalyzer\2012-04-06\2012-04-06\_001.xad

Created: 4/6/2012 9:11:58 AM  
 Modified: 4/6/2012 10:17:31 AM

**Electropherogram Summary Continued ...**



**Setpoint Deviations for sample 10 : CMW12 500bp Soni**

Height Threshold [FU] : 0.5

**Overall Results for sample 10 : CMW12 500bp Soni**

Number of peaks found: 23                      Corr. Area 1: 11,310.6  
 Noise: 0.2

**Peak table for sample 10 : CMW12 500bp Soni**

Peak	Size [bp]	Conc. [pg/μl]	Molarity [pmol/l]	Observations
1	35	125.00	5,411.3	Lower Marker
2	60	1,863,931.63	47,388,180.0	
3	120	55,309.06	700,982.7	
4	138	18,794.80	206,309.5	
5	169	57,045.93	510,947.0	
6	194	45,447.67	354,320.8	
7	206	34,897.43	256,530.8	
8	242	108,344.82	677,714.8	
9	300	221,079.50	1,117,631.6	
10	509	3,204,832.50	9,530,944.0	
11	578	976,000.88	2,556,711.5	
12	853	9,626.26	17,100.9	
13	903	6,030.63	10,121.8	
14	953	5,945.40	9,456.6	
15	1,323	4,407.53	5,047.8	
16	1,485	4,657.83	4,751.7	
17	1,823	3,848.56	3,198.3	
18	1,931	4,772.60	3,744.1	
19	2,280	3,022.68	2,008.7	
20	2,589	3,905.83	2,285.9	
21	2,898	2,762.89	1,444.6	
22	3,799	1,962.12	782.5	


Assay Class: High Sensitivity DNA Assay  
Data Path: C:\...ents and Settings\Bioanalyzer\2012-04-06\2012-04-06\_001.xad

Created: 4/6/2012 9:11:58 AM  
Modified: 4/6/2012 10:17:31 AM

**Electropherogram Summary Continued ...****... Peak table for sample 10 : CMW12 500bp Soni**

Peak	Size [bp]	Conc. [pg/μl]	Molarity [pmol/l]	Observations
23	4,680	1,704.53	551.8	
24	6,349	589.59	140.7	
25	 10,380	75.00	10.9	Upper Marker

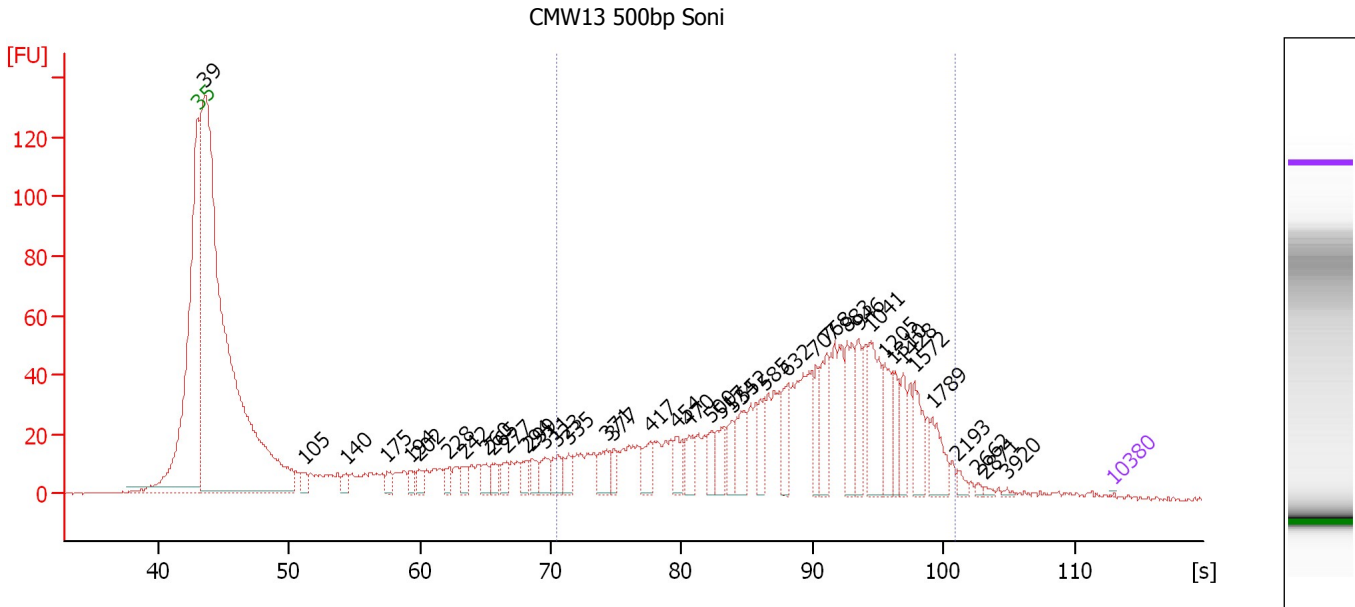
**Region table for sample 10 : CMW12 500bp Soni**

From [bp]	Molarity [pmol/l]	Average Size [bp]	Conc. [pg/μl]	To [bp]	Corr. Area	% of Total	Size distribution in CV [%]	Color
304	13,456,660.0	504	4,288,809.00	745	11,310.6	70	16.3	

Assay Class: High Sensitivity DNA Assay  
 Data Path: C:\...ents and Settings\Bioanalyzer\2012-04-06\2012-04-06\_001.xad

Created: 4/6/2012 9:11:58 AM  
 Modified: 4/6/2012 10:17:31 AM

**Electropherogram Summary Continued ...**



**Setpoint Deviations for sample 11 : CMW13 500bp Soni**

Height Threshold [FU] : 0.5

**Overall Results for sample 11 : CMW13 500bp Soni**

Number of peaks found: 41                      Corr. Area 1: 1,069.2  
 Noise: 0.3

**Peak table for sample 11 : CMW13 500bp Soni**


Peak	Size [bp]	Conc. [pg/µl]	Molarity [pmol/l]	Observations
1	35	125.00	5,411.3	Lower Marker
2	39	266,102.66	10,464,010.0	
3	105	2,717.04	39,089.1	
4	140	2,351.79	25,397.9	
5	175	2,158.10	18,678.1	
6	194	2,204.07	17,207.2	
7	202	2,246.63	16,867.9	
8	228	2,257.80	15,028.4	
9	242	2,330.87	14,597.9	
10	260	2,904.26	16,930.2	
11	265	2,563.03	14,629.5	
12	277	2,943.90	16,077.2	
13	294	3,022.69	15,575.5	
14	299	3,024.84	15,345.8	
15	311	3,599.16	17,514.2	
16	323	4,058.42	19,025.8	
17	335	3,519.36	15,940.4	
18	371	4,688.88	19,172.9	
19	377	2,507.37	10,070.9	
20	417	3,853.28	13,989.6	
21	454	3,561.31	11,890.2	
22	470	4,298.80	13,862.1	

Assay Class: High Sensitivity DNA Assay  
 Data Path: C:\...ents and Settings\Bioanalyzer\2012-04-06\2012-04-06\_001.xad


Created: 4/6/2012 9:11:58 AM  
 Modified: 4/6/2012 10:17:31 AM

**Electropherogram Summary Continued ...**

**... Peak table for sample 11 : CMW13 500bp Soni**

Peak	Size [bp]	Conc. [pg/µl]	Molarity [pmol/l]	Observations
23	500	3,562.45	10,800.0	
24	517	4,383.52	12,849.2	
25	534	3,899.30	11,062.7	
26	552	6,779.57	18,606.8	
27	585	4,441.13	11,509.4	
28	632	6,346.58	15,219.0	
29	707	5,395.29	11,557.5	
30	768	7,690.78	15,177.0	
31	883	8,377.08	14,379.3	
32	946	6,019.83	9,639.6	
33	1,041	10,549.05	15,357.9	
34	1,205	6,413.65	8,065.9	
35	1,310	4,075.18	4,714.2	
36	1,428	4,354.94	4,621.1	
37	1,572	5,613.10	5,409.3	
38	1,789	5,039.10	4,268.3	
39	2,193	1,059.46	732.0	
40	2,662	412.61	234.8	
41	2,871	415.27	219.2	
42	3,920	328.45	127.0	
43	 10,380	75.00	10.9	Upper Marker

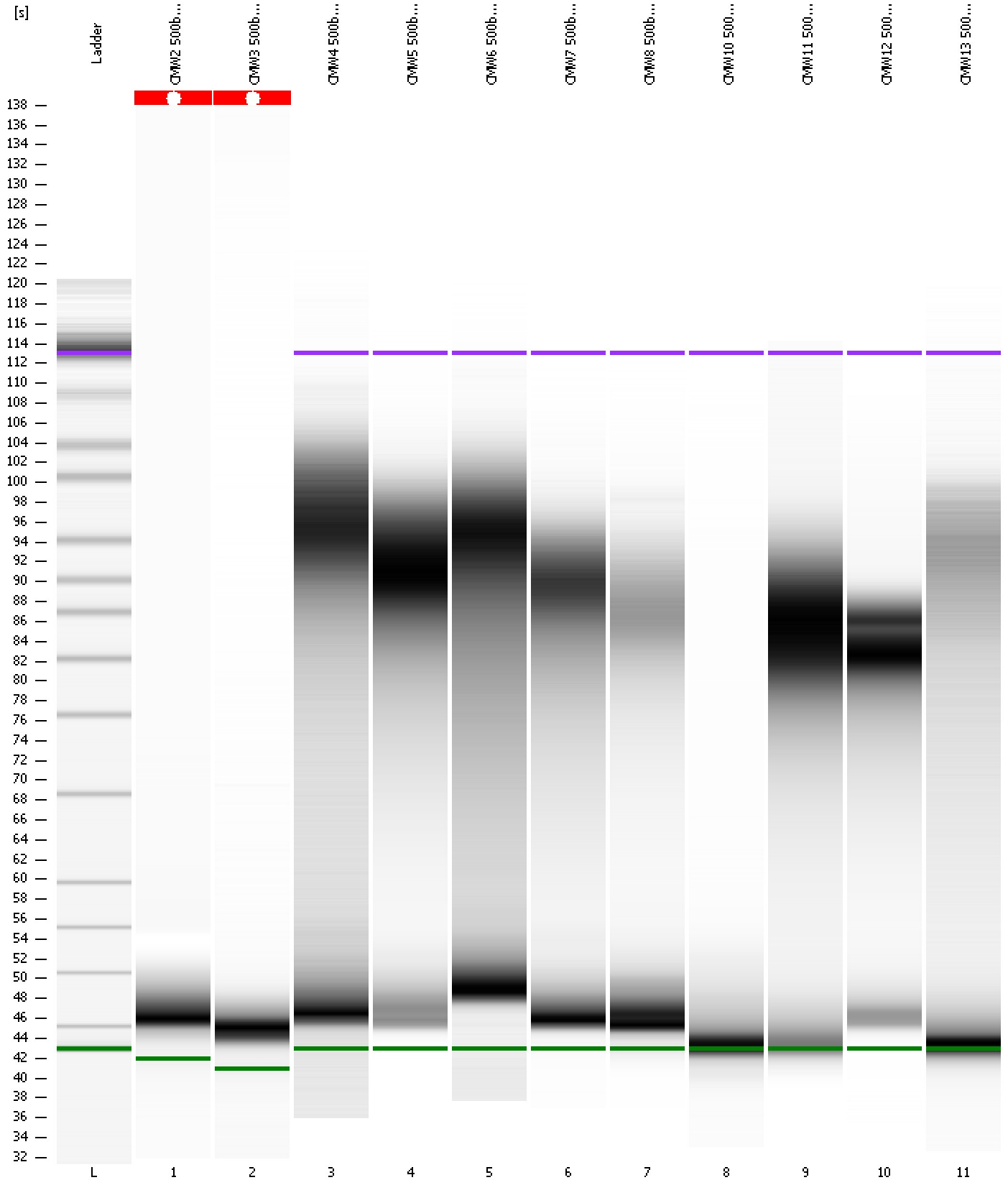
**Region table for sample 11 : CMW13 500bp Soni**

From [bp]	Molarity [pmol/l]	Average Size [bp]	Conc. [pg/µl]	To [bp]	Corr. Area	% of Total	Size distribution in CV [%]	Color
322	500,162.9	828	204,795.89	2,151	1,069.2	48	49.9	

Assay Class: High Sensitivity DNA Assay  
Data Path: C:\...ents and Settings\Bioanalyzer\2012-04-06\2012-04-06\_001.xad

Created: 4/6/2012 9:11:58 AM  
Modified: 4/6/2012 10:17:31 AM

**Gel Image**





Assay Class: High Sensitivity DNA Assay  
 Data Path: C:\...ents and Settings\Bioanalyzer\2012-04-06\2012-04-06\_001.xad

Created: 4/6/2012 9:11:58 AM  
 Modified: 4/6/2012 10:17:31 AM

**Run Logbook**

Description	Number	Source	Category	Sub Category	Time	Time Zone	User	Host
Run ended on port 1 (Number of wells acquired: 12)		Instrument	Run		4/6/2012 9:53:18 AM	(GMT --07:00) Pacific Standard Time	UC Davis	D8XSMGH1
Run started on port 1 (File: C:\Documents and Settings\Bioanalyzer\2012-04-06\2012-04-06_001.xad)		Instrument	Run		4/6/2012 9:12:03 AM	(GMT --07:00) Pacific Standard Time	UC Davis	D8XSMGH1
Product Number : G2938B		Instrument	Run		4/6/2012 9:12:03 AM	(GMT --07:00) Pacific Standard Time	UC Davis	D8XSMGH1
Name :		Instrument	Run		4/6/2012 9:12:03 AM	(GMT --07:00) Pacific Standard Time	UC Davis	D8XSMGH1
Vendor : Agilent Technologies		Instrument	Run		4/6/2012 9:12:03 AM	(GMT --07:00) Pacific Standard Time	UC Davis	D8XSMGH1
Serial# : DE13701086		Instrument	Run		4/6/2012 9:12:03 AM	(GMT --07:00) Pacific Standard Time	UC Davis	D8XSMGH1
Firmware : C.01.069		Instrument	Run		4/6/2012 9:12:03 AM	(GMT --07:00) Pacific Standard Time	UC Davis	D8XSMGH1
Cartridge : Electrode		Instrument	Run		4/6/2012 9:12:03 AM	(GMT --07:00) Pacific Standard Time	UC Davis	D8XSMGH1