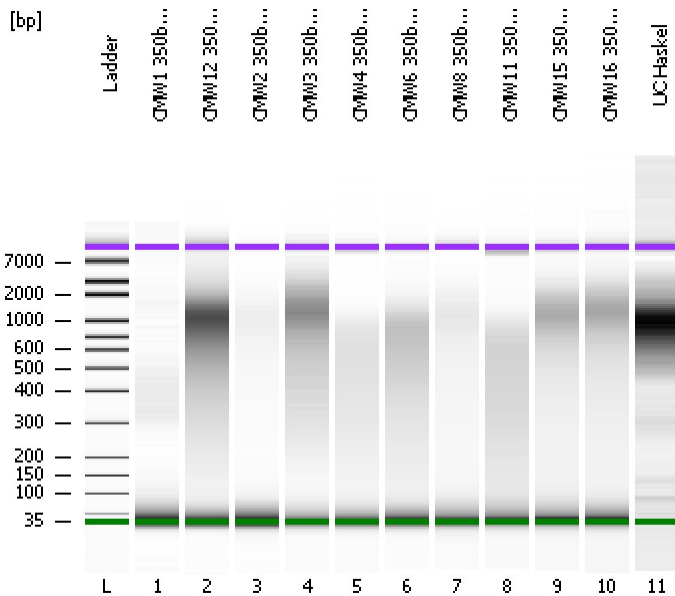


Assay Class: High Sensitivity DNA Assay  
Data Path: C:\...ents and Settings\Bioanalyzer\2012-04-06\2012-04-06\_005.xad

Created: 4/6/2012 1:12:26 PM  
Modified: 4/6/2012 1:55:25 PM

**Electrophoresis File Run Summary**



Instrument Information:

Instrument Name: DE13701086      Firmware: C.01.069  
Serial#: DE13701086      Type: G2938B

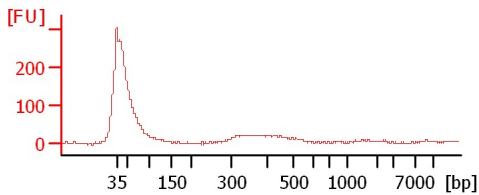
Assay Information:

Assay Origin Path: C:\Program Files\Agilent\2100 bioanalyzer\2100 expert\assays\dsDNA\High Sensitivity DNA.xsy  
Assay Class: High Sensitivity DNA Assay  
Version: 1.03  
Assay Comments: Copyright © 2003-2010 Agilent Technologies

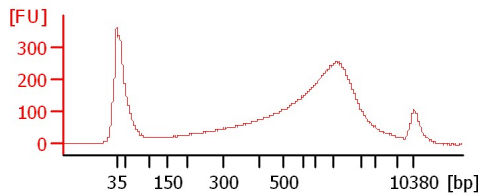
Chip Information:

Chip Lot #:   
Reagent Kit Lot #:   
Chip Comments:

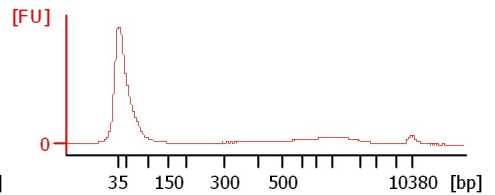
**CMW1 350bp 1:2 rerun Soni**



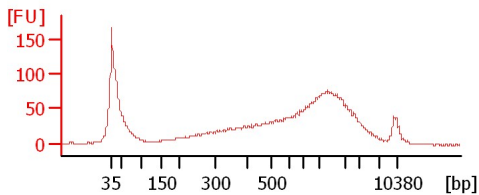
**CMW12 350bp 1:2 rerun Soni**



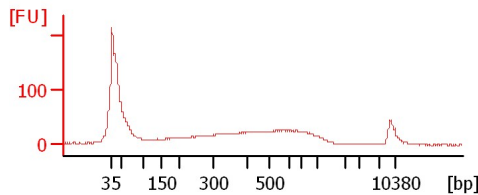
**CMW2 350bp (9+3+2cycles) Soni**



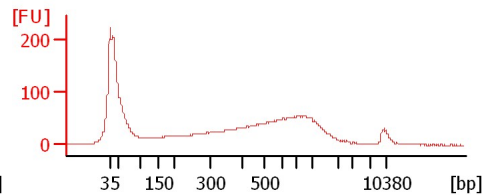
**CMW3 350bp (9+3+2cycles) Soni**



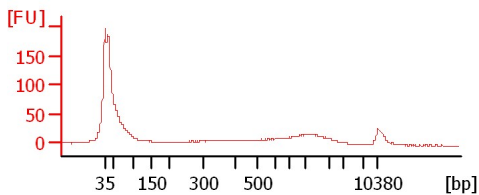
**CMW4 350bp (9+3+2)cycles Soni**



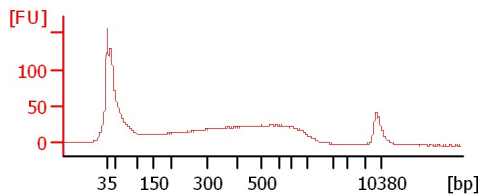
**CMW6 350bp (9+2+2cycles) Soni**



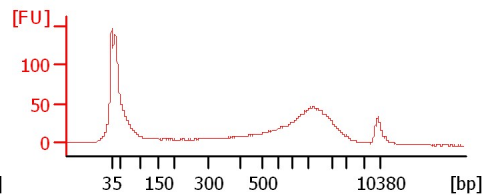
**CMW8 350bp (9+3+3cycles) Soni**



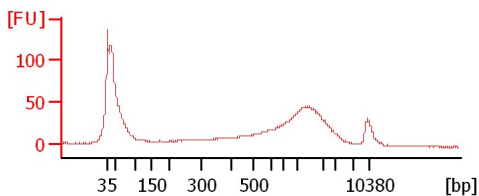
**CMW11 350bp (9+3+3cycles) Soni**



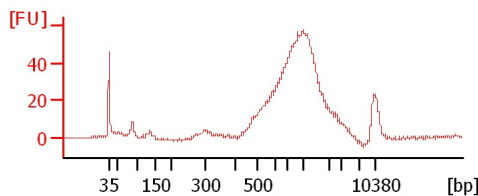
**CMW15 350bp 1:10 (9+3cycle) Soni**



**CMW16 350bp 1:10 (9+3cycles) Soni**



**UC Haskel**



Assay Class: High Sensitivity DNA Assay  
Data Path: C:\...ents and Settings\Bioanalyzer\2012-04-06\2012-04-06\_005.xad

Created: 4/6/2012 1:12:26 PM  
Modified: 4/6/2012 1:55:25 PM

**Electrophoresis File Run Summary (Chip Summary)**

Sample Name	Sample Comment	Rest. Digest	Status	Observation	Result Label	Result Color
CMW1 350bp 1:2 rerun Soni		<input type="checkbox"/>	✓			
CMW12 350bp 1:2 rerun Soni		<input type="checkbox"/>	✓			
CMW2 350bp (9+3+2cycles) Soni		<input type="checkbox"/>	✓			
CMW3 350bp (9+3+2cycles) Soni		<input type="checkbox"/>	✓			
CMW4 350bp (9+3+2)cycles) Soni		<input type="checkbox"/>	✓			
CMW6 350bp (9+2+2cycles) Soni		<input type="checkbox"/>	✓			
CMW8 350bp (9+3+3cycles) Soni		<input type="checkbox"/>	✓			
CMW11 350bp (9+3+3cycles)		<input type="checkbox"/>	✓			
CMW15 350bp 1:10 (9+3cycle)		<input type="checkbox"/>	✓			
Soni						
CMW16 350bp 1:10 (9+3cycles)		<input type="checkbox"/>	✓			
Soni						
UC Haskel		<input type="checkbox"/>	✓			
Ladder		<input type="checkbox"/>	✓			

**Chip Lot #**

**Reagent Kit Lot #**

**Chip Comments :**

Assay Class: High Sensitivity DNA Assay  
Data Path: C:\...ents and Settings\Bioanalyzer\2012-04-06\2012-04-06\_005.xad

Created: 4/6/2012 1:12:26 PM  
Modified: 4/6/2012 1:55:25 PM

**Electrophoresis Assay Details**

**General Analysis Settings**

Number of Available Sample and Ladder Wells (Max.) : 12  
Minimum Visible Range [s] : 32  
Maximum Visible Range [s] : 138  
Start Analysis Time Range [s] : 33  
End Analysis Time Range [s] : 137.5  
Ladder Concentration [pg/μl] : 1950  
Uses Standard Area for Ladder Fragments  
Lower Marker Concentration [pg/μl] : 125  
Upper Marker Concentration [pg/μl] : 75  
Used Upper Marker for Quantitation  
Standard Curve Fit is Point to Point  
Show Data Aligned to Lower and Upper Marker

**Integrator Settings**

Integration Start Time [s] : 33.05  
Integration End Time [s] : 137  
Slope Threshold : 0.8  
Height Threshold [FU] : 5  
Area Threshold : 0.1  
Width Threshold [s] : 0.6  
Baseline Plateau [s] : 0.5

**Filter Settings**

Filter Width [s] : 0.5  
Polynomial Order : 4

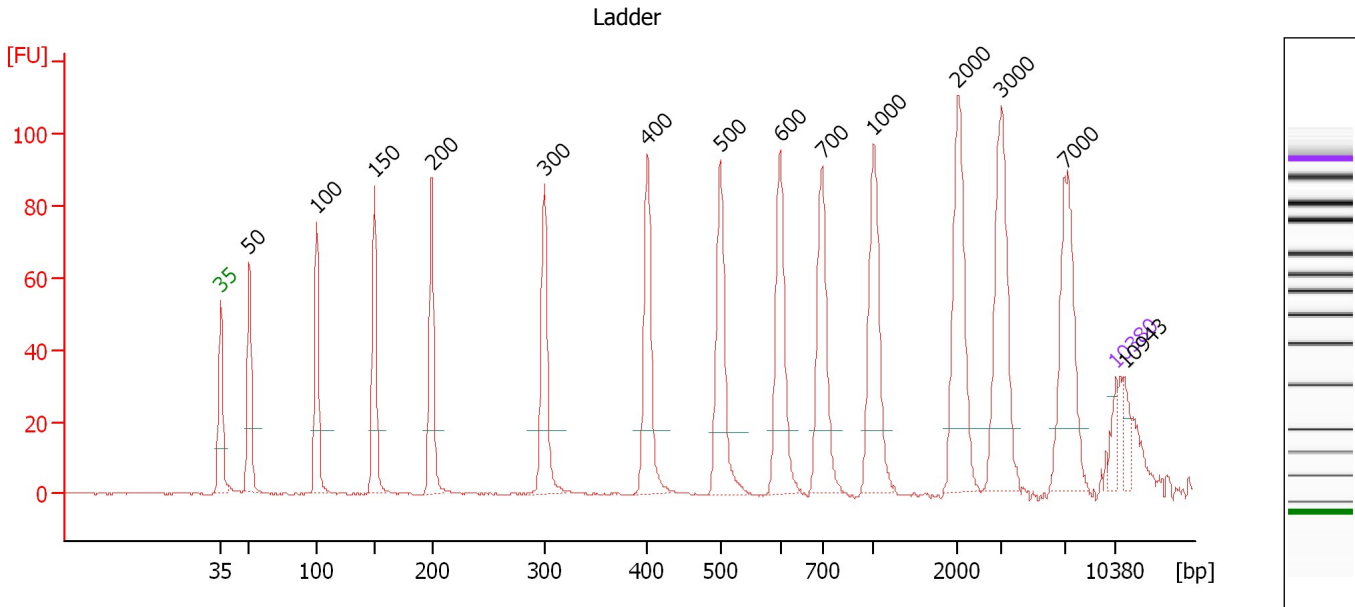
**Ladder**

Ladder Peak	Size	Area
1	35	160
2	50	210
3	100	208
4	150	221
5	200	242
6	300	270
7	400	305
8	500	306
9	600	336
10	700	321
11	1000	366
12	2000	413
13	3000	411
14	7000	400
15	10380	214

Assay Class: High Sensitivity DNA Assay  
 Data Path: C:\...ents and Settings\Bioanalyzer\2012-04-06\2012-04-06\_005.xad

Created: 4/6/2012 1:12:26 PM  
 Modified: 4/6/2012 1:55:25 PM

**Electropherogram Summary**



**Overall Results for Ladder**

Noise: 0.1

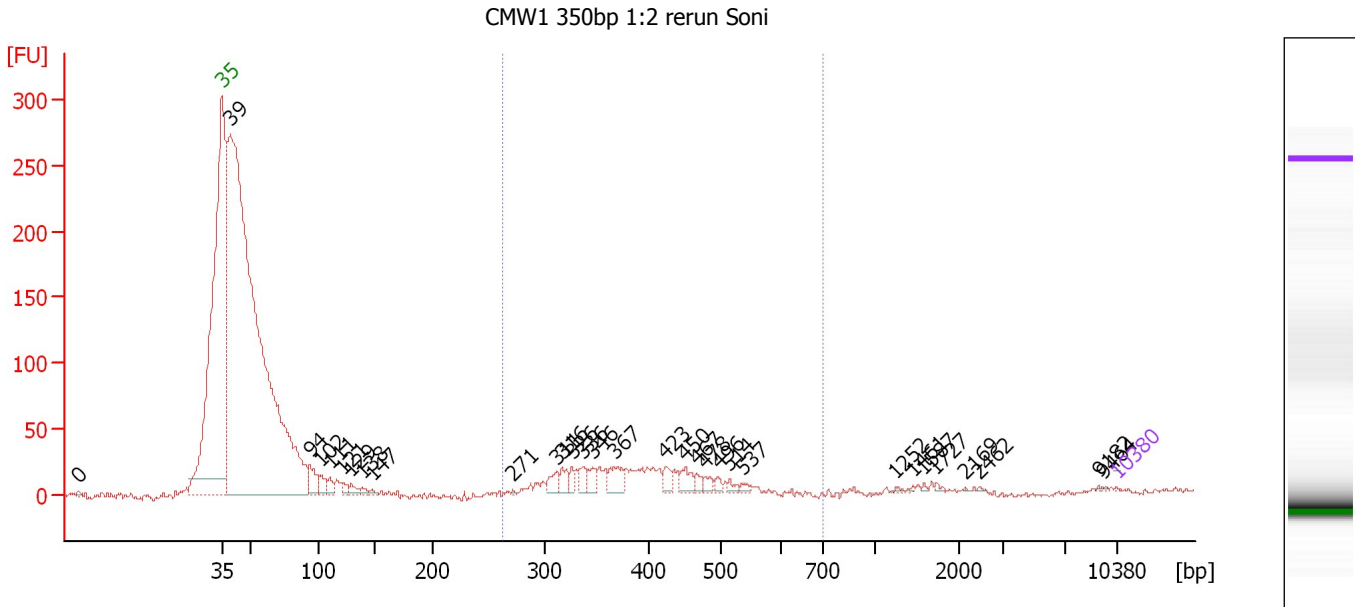
**Peak table for Ladder**

Peak	Size [bp]	Conc. [pg/μl]	Molarity [pmol/l]	Observations
1	35	125.00	5,411.3	Lower Marker
2	50	150.00	4,545.5	Ladder Peak
3	100	150.00	2,272.7	Ladder Peak
4	150	150.00	1,515.2	Ladder Peak
5	200	150.00	1,136.4	Ladder Peak
6	300	150.00	757.6	Ladder Peak
7	400	150.00	568.2	Ladder Peak
8	500	150.00	454.5	Ladder Peak
9	600	150.00	378.8	Ladder Peak
10	700	150.00	324.7	Ladder Peak
11	1,000	150.00	227.3	Ladder Peak
12	2,000	150.00	113.6	Ladder Peak
13	3,000	150.00	75.8	Ladder Peak
14	7,000	150.00	32.5	Ladder Peak
15	10,380	75.00	10.9	Upper Marker
16	10,943	0.00	0.0	

Assay Class: High Sensitivity DNA Assay  
 Data Path: C:\...ents and Settings\Bioanalyzer\2012-04-06\2012-04-06\_005.xad

Created: 4/6/2012 1:12:26 PM  
 Modified: 4/6/2012 1:55:25 PM

**Electropherogram Summary Continued ...**



**Setpoint Deviations for sample 1 : CMW1 350bp 1:2 rerun Soni**

Height Threshold [FU] : 1

**Overall Results for sample 1 : CMW1 350bp 1:2 rerun Soni**

Number of peaks found: 31                      Corr. Area 1: 337.8  
 Noise: 1.8

**Peak table for sample 1 : CMW1 350bp 1:2 rerun Soni**


Peak	Size [bp]	Conc. [pg/μl]	Molarity [pmol/l]	Observations
1	0	0.00	0.0	
2	35	125.00	5,411.3	Lower Marker
3	39	352,958.09	13,557,007.0	
4	94	5,730.66	92,285.3	
5	102	3,651.79	54,297.0	
6	111	2,386.13	32,657.7	
7	121	1,555.05	19,414.6	
8	129	1,792.00	21,085.1	
9	138	750.57	8,211.1	
10	147	664.55	6,835.7	
11	271	231.05	1,290.6	
12	311	2,879.02	14,025.4	
13	316	2,672.99	12,809.3	
14	326	1,985.66	9,229.5	
15	336	2,482.05	11,182.8	
16	346	2,653.85	11,618.3	
17	367	4,379.00	18,092.3	
18	423	2,228.97	7,981.0	
19	450	2,930.37	9,858.2	
20	467	1,404.84	4,562.1	
21	478	1,551.57	4,914.6	
22	496	1,026.42	3,135.5	

Assay Class: High Sensitivity DNA Assay  
 Data Path: C:\...ents and Settings\Bioanalyzer\2012-04-06\2012-04-06\_005.xad


Created: 4/6/2012 1:12:26 PM  
 Modified: 4/6/2012 1:55:25 PM

**Electropherogram Summary Continued ...**

**... Peak table for sample 1 : CMW1 350bp 1:2 rerun Soni**

Peak	Size [bp]	Conc. [pg/µl]	Molarity [pmol/l]	Observations
23	514	990.35	2,919.9	
24	537	719.82	2,030.5	
25	1,252	249.75	302.3	
26	1,461	197.05	204.4	
27	1,587	206.00	196.6	
28	1,727	324.80	285.0	
29	2,169	61.05	42.7	
30	2,462	154.25	94.9	
31	9,182	98.56	16.3	
32	9,464	99.04	15.9	
33	 10,380	75.00	10.9	Upper Marker

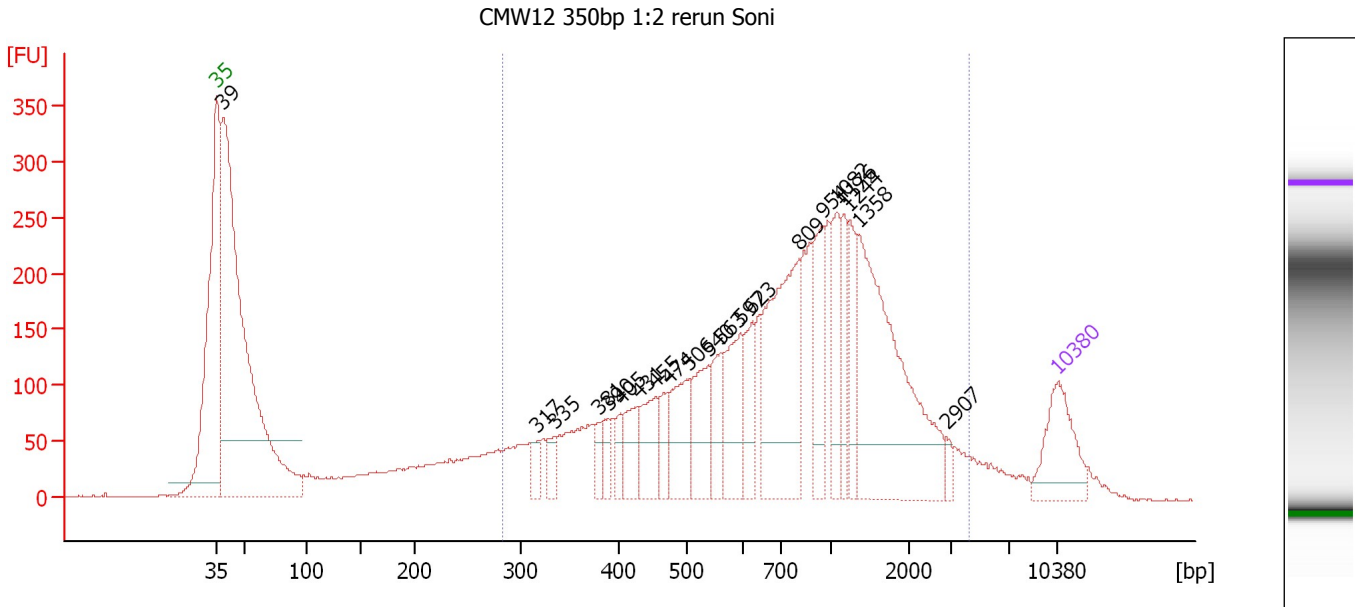
**Region table for sample 1 : CMW1 350bp 1:2 rerun Soni**

From [bp]	Molarity [pmol/l]	Average Size [bp]	Conc. [pg/µl]	To [bp]	Corr. Area	% of Total	Size distribution in CV [%]	Color
263	169,533.8	393	42,445.60	702	337.8	15	16.7	

Assay Class: High Sensitivity DNA Assay  
 Data Path: C:\...ents and Settings\Bioanalyzer\2012-04-06\2012-04-06\_005.xad

Created: 4/6/2012 1:12:26 PM  
 Modified: 4/6/2012 1:55:25 PM

**Electropherogram Summary Continued ...**



**Setpoint Deviations for sample 2 : CMW12 350bp 1:2 rerun Soni**

Height Threshold [FU] : 50

**Overall Results for sample 2 : CMW12 350bp 1:2 rerun Soni**

Number of peaks found: 21                      Corr. Area 1: 5,459.1  
 Noise: 0.6


**Peak table for sample 2 : CMW12 350bp 1:2 rerun Soni**

Peak	Size [bp]	Conc. [pg/μl]	Molarity [pmol/l]	Observations
1	35	125.00	5,411.3	Lower Marker
2	39	1,151.39	45,252.5	
3	317	24.90	118.9	
4	335	30.00	135.6	
5	381	21.98	87.4	
6	390	25.87	100.5	
7	405	26.68	99.9	
8	431	55.77	196.2	
9	455	69.97	233.0	
10	474	42.27	135.2	
11	506	89.44	267.7	
12	540	87.63	245.7	
13	563	63.72	171.4	
14	597	98.79	250.9	
15	623	61.31	149.0	
16	809	253.75	475.0	
17	954	94.69	150.3	
18	1,082	76.26	106.8	
19	1,176	51.03	65.7	
20	1,244	59.95	73.0	
21	1,358	324.77	362.3	
22	2,907	10.94	5.7	


Assay Class: High Sensitivity DNA Assay  
Data Path: C:\...ents and Settings\Bioanalyzer\2012-04-06\2012-04-06\_005.xad

Created: 4/6/2012 1:12:26 PM  
Modified: 4/6/2012 1:55:25 PM

**Electropherogram Summary Continued ...****... Peak table for sample 2 : CMW12 350bp 1:2 rerun Soni**

Peak	Size [bp]	Conc. [pg/μl]	Molarity [pmol/l]	Observations
23	 10,380	75.00	10.9	Upper Marker

**Region table for sample 2 : CMW12 350bp 1:2 rerun Soni**

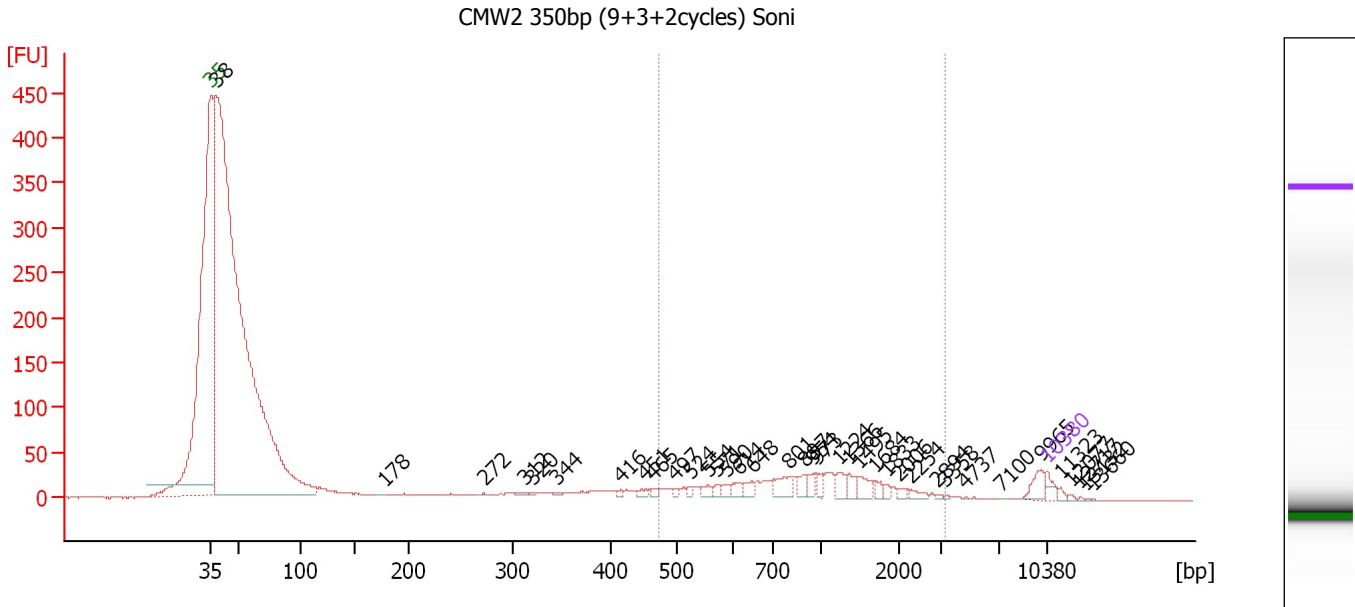
From [bp]	Molarity [pmol/l]	Average Size [bp]	Conc. [pg/μl]	To [bp]	Corr. Area	% of Total	Size distribution in CV [%]	Color
283	4,783.5	976	1,985.28	4,302	5,459.1	66	65.9	



Assay Class: High Sensitivity DNA Assay  
 Data Path: C:\...ents and Settings\Bioanalyzer\2012-04-06\2012-04-06\_005.xad

Created: 4/6/2012 1:12:26 PM  
 Modified: 4/6/2012 1:55:25 PM

**Electropherogram Summary Continued ...**



**Setpoint Deviations for sample 3 : CMW2 350bp (9+3+2cycles) Soni**

Height Threshold [FU] : 0.1

**Overall Results for sample 3 : CMW2 350bp (9+3+2cycles) Soni**

Number of peaks found: 37                      Corr. Area 1: 489.6  
 Noise: 0.6

**Peak table for sample 3 : CMW2 350bp (9+3+2cycles) Soni**

Peak	Size [bp]	Conc. [pg/μl]	Molarity [pmol/l]	Observations
1	35	125.00	5,411.3	Lower Marker
2	38	20,660.15	824,323.8	
3	178	2.93	24.9	
4	272	5.69	31.7	
5	312	19.58	95.2	
6	320	9.38	44.4	
7	344	17.98	79.2	
8	416	24.07	87.7	
9	451	40.97	137.6	
10	465	29.36	95.8	
11	497	30.96	94.4	
12	524	35.70	103.3	
13	554	65.49	179.0	
14	571	38.01	100.9	
15	590	54.03	138.8	
16	614	69.80	172.2	
17	648	79.35	185.5	
18	801	171.08	323.5	
19	897	100.96	170.5	
20	954	75.70	120.3	
21	973	66.50	103.5	
22	1,224	95.83	118.7	

Assay Class: High Sensitivity DNA Assay  
 Data Path: C:\...ents and Settings\Bioanalyzer\2012-04-06\2012-04-06\_005.xad

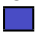
Created: 4/6/2012 1:12:26 PM  
 Modified: 4/6/2012 1:55:25 PM

**Electropherogram Summary Continued ...**

**... Peak table for sample 3 : CMW2 350bp (9+3+2cycles) Soni**

Peak	Size [bp]	Conc. [pg/μl]	Molarity [pmol/l]	Observations
23	1,366	82.00	91.0	
24	1,495	109.08	110.6	
25	1,684	51.69	46.5	
26	1,833	32.55	26.9	
27	2,006	32.03	24.2	
28	2,254	45.71	30.7	
29	2,894	9.75	5.1	
30	3,358	7.60	3.4	
31	4,737	3.16	1.0	
32	7,100	0.99	0.2	
33	9,965	114.01	17.3	
34	10,380	75.00	10.9	Upper Marker
35	11,323	0.00	0.0	
36	12,077	0.00	0.0	
37	12,717	0.00	0.0	
38	13,132	0.00	0.0	
39	13,660	0.00	0.0	

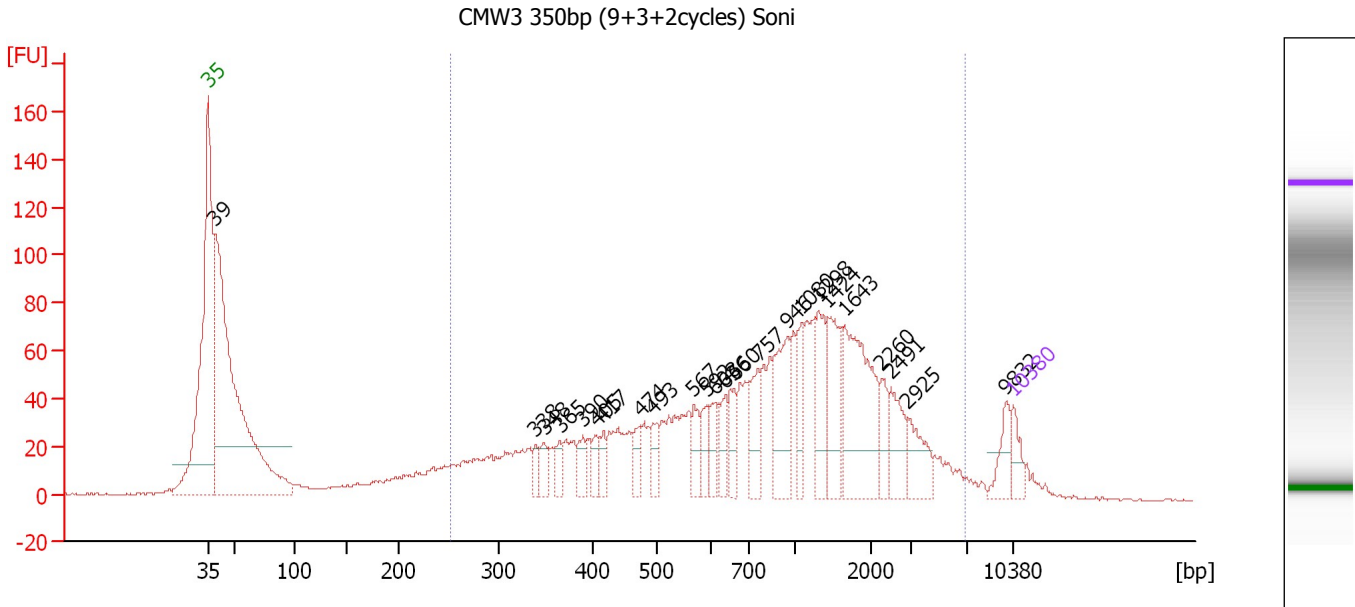
**Region table for sample 3 : CMW2 350bp (9+3+2cycles) Soni**

From [bp]	Molarity [pmol/l]	Average Size [bp]	Conc. [pg/μl]	To [bp]	Corr. Area	% of Total	Size distribution in CV [%]	Color
472	3,586.6	1,088	1,962.07	3,340	489.6	13	52.0	

Assay Class: High Sensitivity DNA Assay  
 Data Path: C:\...ents and Settings\Bioanalyzer\2012-04-06\2012-04-06\_005.xad

Created: 4/6/2012 1:12:26 PM  
 Modified: 4/6/2012 1:55:25 PM

**Electropherogram Summary Continued ...**



**Setpoint Deviations for sample 4 : CMW3 350bp (9+3+2cycles) Soni**

Height Threshold [FU] : 20

**Overall Results for sample 4 : CMW3 350bp (9+3+2cycles) Soni**

Number of peaks found: 24                      Corr. Area 1: 1,863.6  
 Noise: 0.4

**Peak table for sample 4 : CMW3 350bp (9+3+2cycles) Soni**

Peak	Size [bp]	Conc. [pg/μl]	Molarity [pmol/l]	Observations
1	35	125.00	5,411.3	Lower Marker
2	39	2,895.12	113,328.6	
3	338	65.44	292.9	
4	348	91.64	399.4	
5	365	71.98	298.5	
6	390	92.34	358.7	
7	405	84.57	316.1	
8	417	70.63	256.7	
9	474	98.35	314.3	
10	493	96.58	296.9	
11	567	115.83	309.6	
12	592	103.08	264.0	
13	608	99.75	248.6	
14	636	111.46	265.5	
15	660	120.95	277.7	
16	757	178.88	358.1	
17	946	308.69	494.4	
18	1,080	131.28	184.3	
19	1,298	227.67	265.8	
20	1,424	264.02	280.8	
21	1,643	530.90	489.7	
22	2,260	96.83	64.9	

Assay Class: High Sensitivity DNA Assay  
 Data Path: C:\...ents and Settings\Bioanalyzer\2012-04-06\2012-04-06\_005.xad


Created: 4/6/2012 1:12:26 PM  
 Modified: 4/6/2012 1:55:25 PM

### Electropherogram Summary Continued ...

#### ... Peak table for sample 4 : CMW3 350bp (9+3+2cycles) Soni

Peak	Size [bp]	Conc. [pg/μl]	Molarity [pmol/l]	Observations
23	2,491	163.81	99.6	
24	2,925	142.40	73.8	
25	9,832	98.42	15.2	
26	10,380	75.00	10.9	Upper Marker

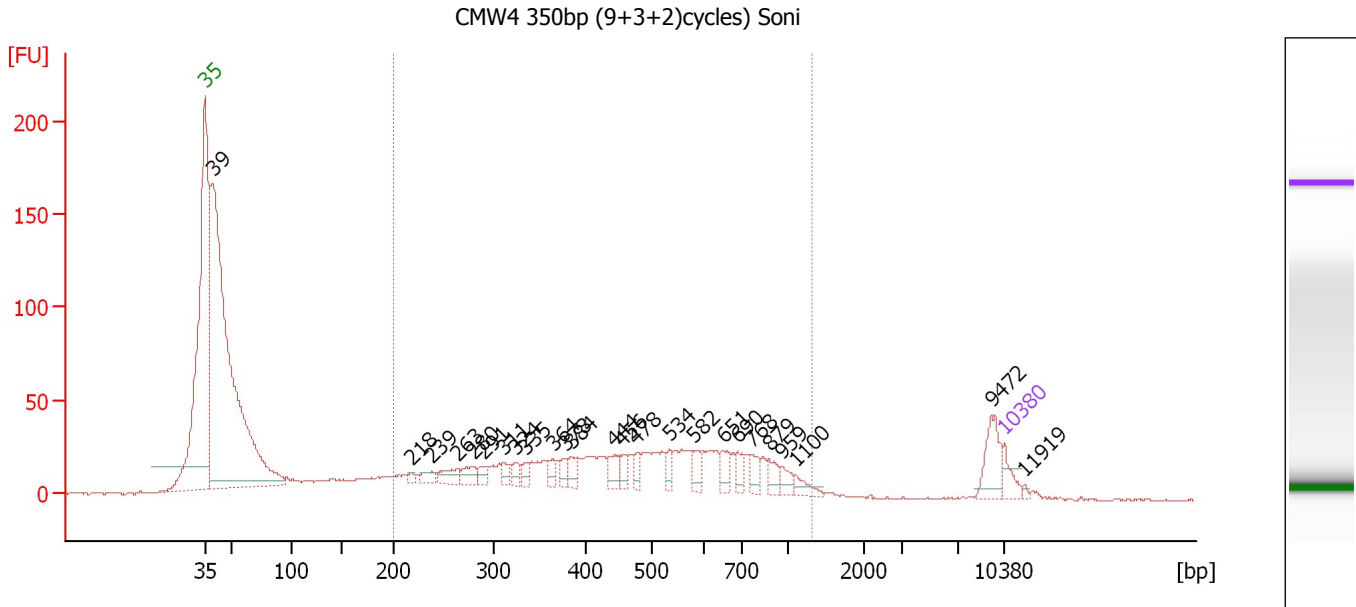
#### Region table for sample 4 : CMW3 350bp (9+3+2cycles) Soni

From [bp]	Molarity [pmol/l]	Average Size [bp]	Conc. [pg/μl]	To [bp]	Corr. Area	% of Total	Size distribution in CV [%]	Color
251	14,307.4	1,210	5,837.72	6,784	1,863.6	71	86.1	

Assay Class: High Sensitivity DNA Assay  
 Data Path: C:\...ents and Settings\Bioanalyzer\2012-04-06\2012-04-06\_005.xad

Created: 4/6/2012 1:12:26 PM  
 Modified: 4/6/2012 1:55:25 PM

**Electropherogram Summary Continued ...**



**Overall Results for sample 5 : CMW4 350bp (9+3+2)cycles) Soni**

Number of peaks found: 25                      Corr. Area 1: 890.7  
 Noise: 0.4

**Peak table for sample 5 : CMW4 350bp (9+3+2)cycles) Soni**

Peak	Size [bp]	Conc. [pg/μl]	Molarity [pmol/l]	Observations
1	35	125.00	5,411.3	Lower Marker
2	39	5,021.57	193,309.5	
3	218	23.44	163.0	
4	239	59.52	378.0	
5	263	102.86	592.5	
6	280	93.27	505.6	
7	291	61.60	321.1	
8	311	66.70	325.3	
9	324	59.89	280.1	
10	335	48.72	220.4	
11	364	72.70	302.8	
12	378	70.76	283.5	
13	384	74.00	292.0	
14	444	90.08	307.4	
15	456	65.00	216.2	
16	478	62.38	197.8	
17	534	63.74	180.8	
18	582	79.73	207.5	
19	651	92.72	215.7	
20	690	80.76	177.5	
21	768	73.89	145.8	
22	879	76.88	132.5	
23	959	61.72	97.6	
24	1,100	60.98	84.0	
25	9,472	169.59	27.1	
26	10,380	75.00	10.9	Upper Marker


Assay Class: High Sensitivity DNA Assay  
Data Path: C:\...ents and Settings\Bioanalyzer\2012-04-06\2012-04-06\_005.xad

Created: 4/6/2012 1:12:26 PM  
Modified: 4/6/2012 1:55:25 PM

**Electropherogram Summary Continued ...****... Peak table for sample 5 : CMW4 350bp (9+3+2)cycles) Soni**

Peak	Size [bp]	Conc. [pg/μl]	Molarity [pmol/l]	Observations
27	11,919	0.00	0.0	

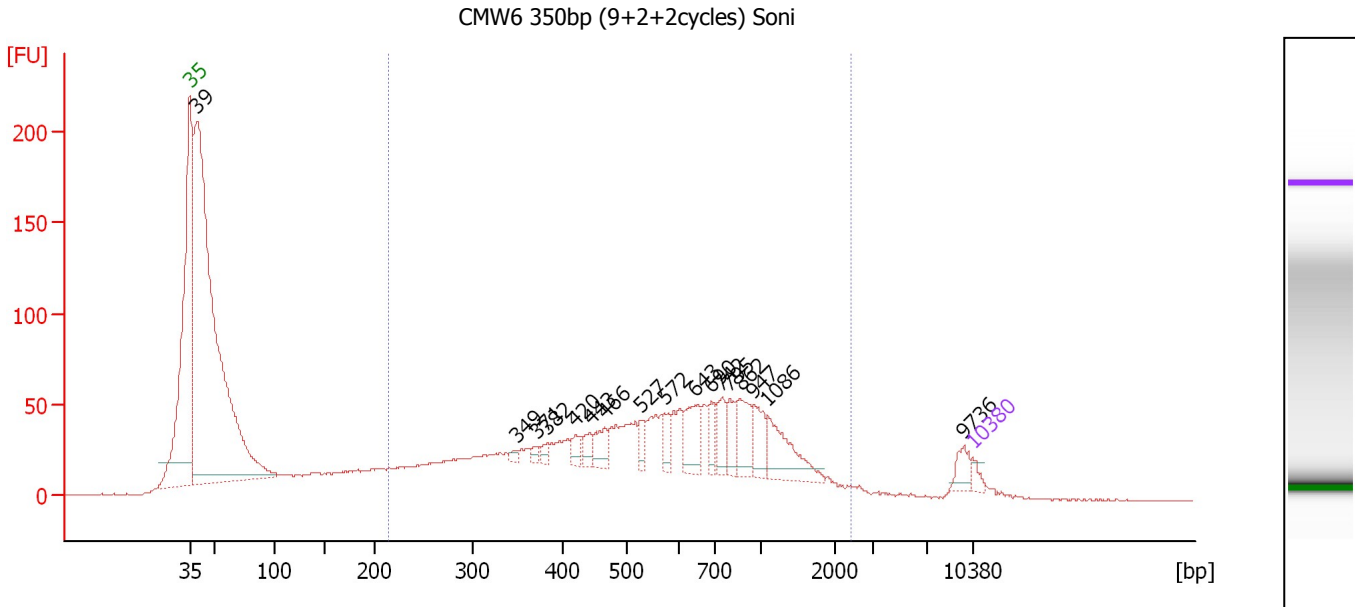
**Region table for sample 5 : CMW4 350bp (9+3+2)cycles) Soni**

From [bp]	Molarity [pmol/l]	Average Size [bp]	Conc. [pg/μl]	To [bp]	Corr. Area	% of Total	Size distribution in CV [%]	Color
200	14,871.7	501	3,850.16	1,309	890.7	46	42.7	

Assay Class: High Sensitivity DNA Assay  
 Data Path: C:\...ents and Settings\Bioanalyzer\2012-04-06\2012-04-06\_005.xad

Created: 4/6/2012 1:12:26 PM  
 Modified: 4/6/2012 1:55:25 PM

**Electropherogram Summary Continued ...**



**Overall Results for sample 6 : CMW6 350bp (9+2+2cycles) Soni**

Number of peaks found: 17                      Corr. Area 1: 1,648.2  
 Noise: 0.4

**Peak table for sample 6 : CMW6 350bp (9+2+2cycles) Soni**

Peak	Size [bp]	Conc. [pg/μl]	Molarity [pmol/l]	Observations
1	35	125.00	5,411.3	Lower Marker
2	39	13,572.26	525,528.9	
3	349	63.95	277.6	
4	371	69.36	283.3	
5	382	98.71	391.4	
6	420	171.42	618.5	
7	443	179.95	616.0	
8	466	279.48	908.4	
9	527	165.00	474.1	
10	572	221.74	587.1	
11	643	525.02	1,236.8	
12	690	232.73	511.4	
13	742	340.79	696.3	
14	795	297.62	567.5	
15	862	460.93	810.3	
16	947	356.97	571.3	
17	1,086	665.27	927.8	
18	9,736	185.32	28.8	
19	10,380	75.00	10.9	Upper Marker

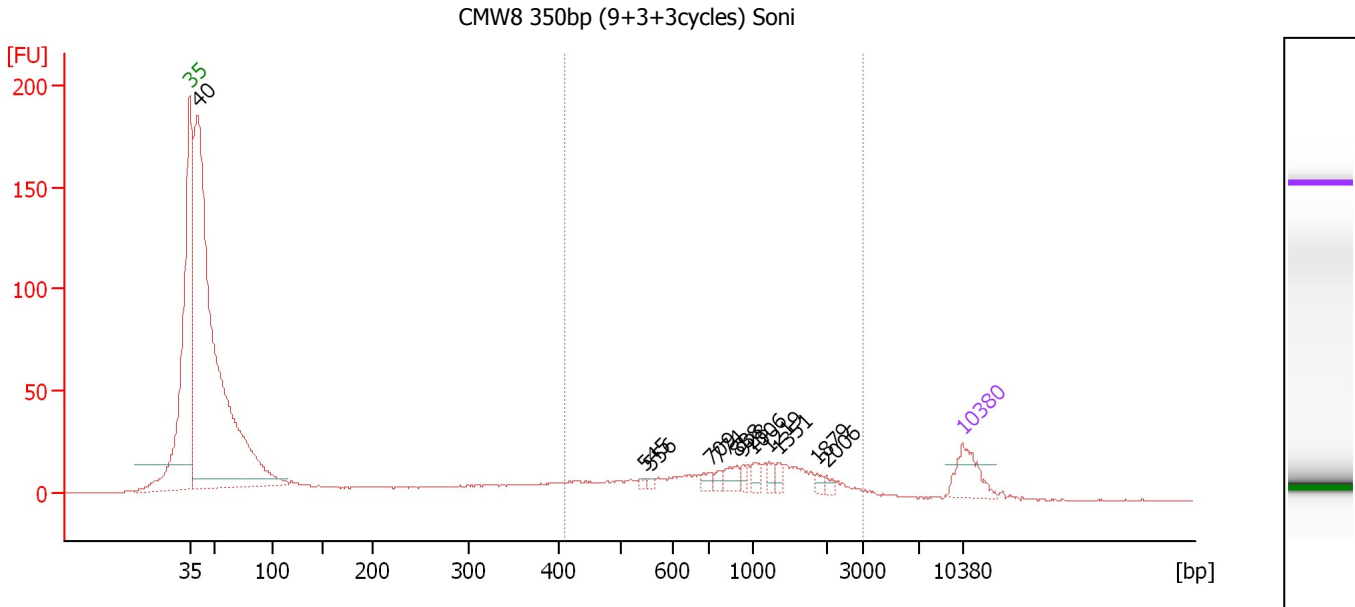
**Region table for sample 6 : CMW6 350bp (9+2+2cycles) Soni**

From [bp]	Molarity [pmol/l]	Average Size [bp]	Conc. [pg/μl]	To [bp]	Corr. Area	% of Total	Size distribution in CV [%]	Color
215	44,489.9	656	13,443.47	2,408	1,648.2	52	57.5	Blue

Assay Class: High Sensitivity DNA Assay  
 Data Path: C:\...ents and Settings\Bioanalyzer\2012-04-06\2012-04-06\_005.xad

Created: 4/6/2012 1:12:26 PM  
 Modified: 4/6/2012 1:55:25 PM

**Electropherogram Summary Continued ...**



**Overall Results for sample 7 : CMW8 350bp (9+3+3cycles) Soni**

Number of peaks found: 12                      Corr. Area 1: 322.0  
 Noise: 0.3

**Peak table for sample 7 : CMW8 350bp (9+3+3cycles) Soni**

Peak	Size [bp]	Conc. [pg/µl]	Molarity [pmol/l]	Observations
1	35	125.00	5,411.3	Lower Marker
2	40	2,815.12	107,093.7	
3	545	7.48	20.8	
4	556	7.43	20.2	
5	709	19.37	41.4	
6	774	14.60	28.6	
7	888	32.83	56.0	
8	928	14.72	24.0	
9	1,006	23.35	35.2	
10	1,219	19.39	24.1	
11	1,351	15.48	17.4	
12	1,879	10.83	8.7	
13	2,006	10.22	7.7	
14	10,380	75.00	10.9	Upper Marker

**Region table for sample 7 : CMW8 350bp (9+3+3cycles) Soni**

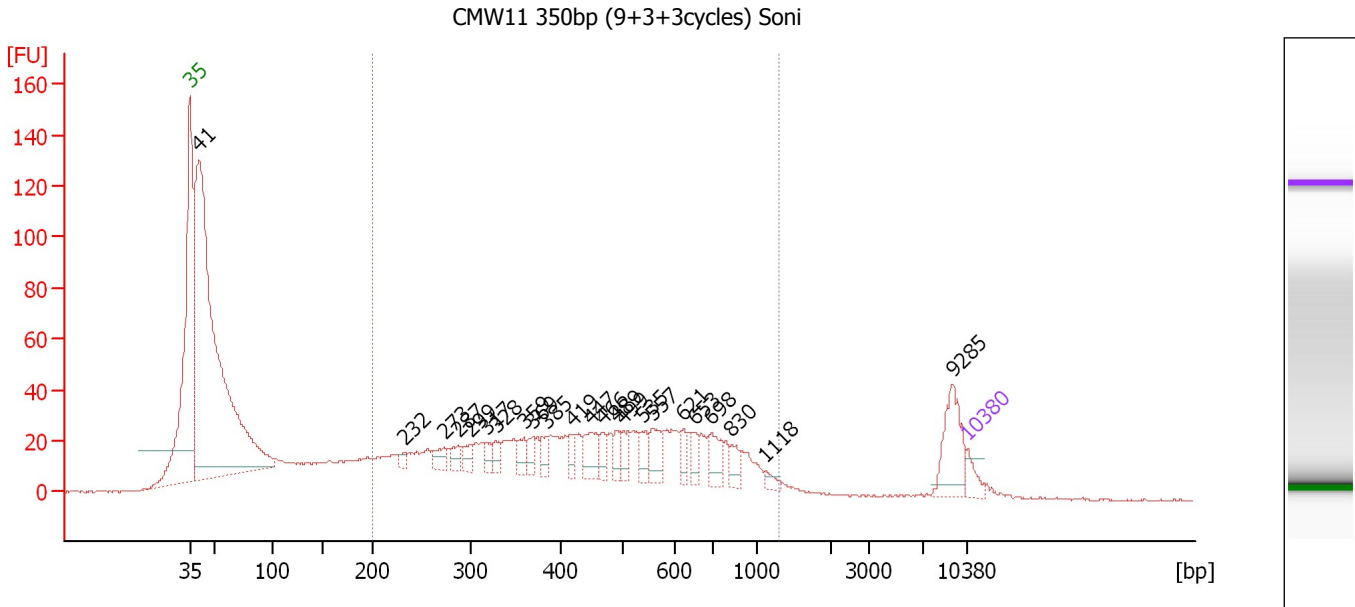
From [bp]	Molarity [pmol/l]	Average Size [bp]	Conc. [pg/µl]	To [bp]	Corr. Area	% of Total	Size distribution in CV [%]	Color
410	1,090.0	1,059	547.78	2,961	322.0	21	54.9	Blue



Assay Class: High Sensitivity DNA Assay  
 Data Path: C:\...ents and Settings\Bioanalyzer\2012-04-06\2012-04-06\_005.xad

Created: 4/6/2012 1:12:26 PM  
 Modified: 4/6/2012 1:55:25 PM

**Electropherogram Summary Continued ...**



**Overall Results for sample 8 : CMW11 350bp (9+3+3cycles) Soni**

Number of peaks found: 23                      Corr. Area 1: 992.0  
 Noise: 0.3


**Peak table for sample 8 : CMW11 350bp (9+3+3cycles) Soni**

Peak	Size [bp]	Conc. [pg/μl]	Molarity [pmol/l]	Observations
1	35	125.00	5,411.3	Lower Marker
2	41	6,464.51	240,314.3	
3	232	42.34	276.2	
4	273	122.15	678.8	
5	287	88.83	469.2	
6	299	89.00	450.4	
7	317	84.61	404.2	
8	328	81.22	375.4	
9	359	104.31	439.9	
10	369	88.80	364.2	
11	385	95.65	376.6	
12	419	94.14	340.4	
13	447	199.41	676.0	
14	466	104.57	339.7	
15	489	107.70	333.5	
16	499	100.95	306.8	
17	535	111.81	316.5	
18	557	184.60	502.2	
19	621	88.80	216.8	
20	653	93.23	216.5	
21	698	175.96	382.1	
22	830	91.37	166.8	
23	1,118	45.45	61.6	
24	9,285	325.31	53.1	
25	10,380	75.00	10.9	Upper Marker

Assay Class: High Sensitivity DNA Assay  
Data Path: C:\...ents and Settings\Bioanalyzer\2012-04-06\2012-04-06\_005.xad

Created: 4/6/2012 1:12:26 PM  
Modified: 4/6/2012 1:55:25 PM

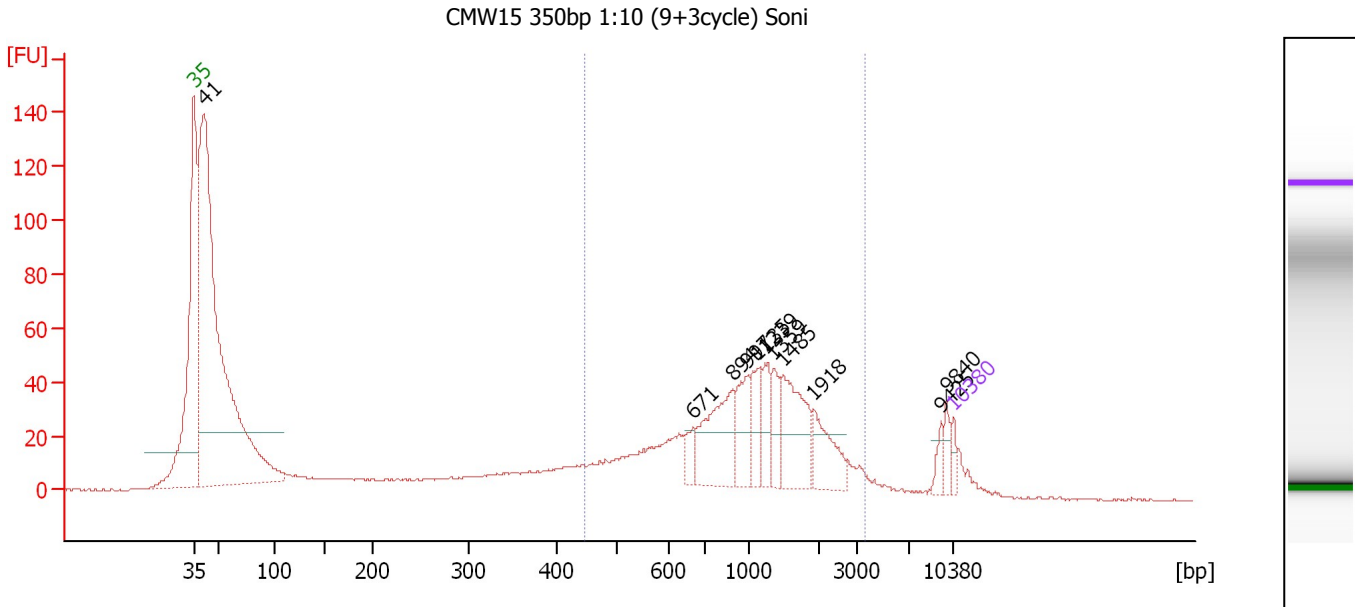
**Electropherogram Summary Continued ...****... Region table for sample 8 : CMW11 350bp (9+3+3cycles) Soni**

<b>From [bp]</b>	<b>Molarity [pmol/l]</b>	<b>Average Size [bp]</b>	<b>Conc. [pg/μl]</b>	<b>To [bp]</b>	<b>Corr. Area</b>	<b>% of Total</b>	<b>Size distribution in CV [%]</b>	<b>Co lor</b>
200	25,866.4	483	6,467.89	1,314	992.0	48	43.2	

Assay Class: High Sensitivity DNA Assay  
 Data Path: C:\...ents and Settings\Bioanalyzer\2012-04-06\2012-04-06\_005.xad

Created: 4/6/2012 1:12:26 PM  
 Modified: 4/6/2012 1:55:25 PM

**Electropherogram Summary Continued ...**



**Setpoint Deviations for sample 9 : CMW15 350bp 1:10 (9+3cycle) Soni**

Height Threshold [FU] : 20

**Overall Results for sample 9 : CMW15 350bp 1:10 (9+3cycle) Soni**

Number of peaks found: 11                      Corr. Area 1: 726.8  
 Noise: 0.3

**Peak table for sample 9 : CMW15 350bp 1:10 (9+3cycle) Soni**

Peak	Size [bp]	Conc. [pg/μl]	Molarity [pmol/l]	Observations
1	35	125.00	5,411.3	Lower Marker
2	41	8,147.70	301,867.5	
3	671	142.47	321.9	
4	894	709.53	1,201.9	
5	997	347.74	528.7	
6	1,135	296.03	395.3	
7	1,239	245.14	299.7	
8	1,359	216.28	241.2	
9	1,485	607.70	619.9	
10	1,918	345.95	273.3	
11	9,425	81.88	13.2	
12	9,840	95.88	14.8	
13	10,380	75.00	10.9	Upper Marker

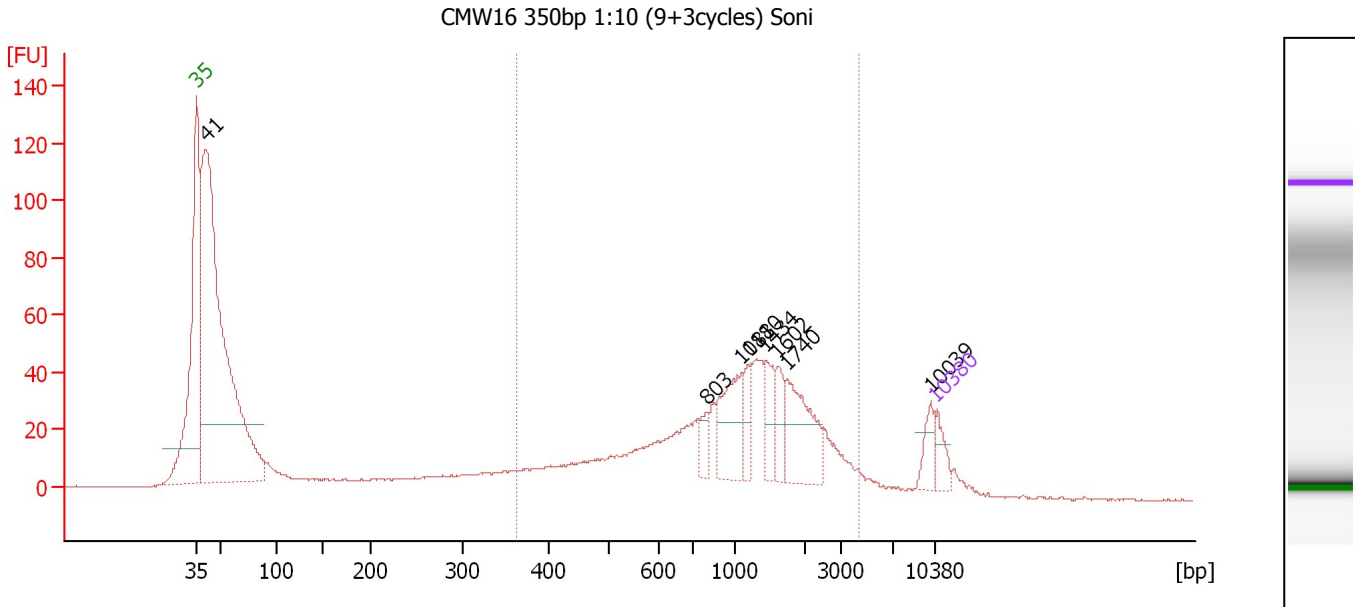
**Region table for sample 9 : CMW15 350bp 1:10 (9+3cycle) Soni**

From [bp]	Molarity [pmol/l]	Average Size [bp]	Conc. [pg/μl]	To [bp]	Corr. Area	% of Total	Size distribution in CV [%]	Color
448	7,852.8	1,196	4,573.38	3,636	726.8	40	52.2	Blue

Assay Class: High Sensitivity DNA Assay  
 Data Path: C:\...ents and Settings\Bioanalyzer\2012-04-06\2012-04-06\_005.xad

Created: 4/6/2012 1:12:26 PM  
 Modified: 4/6/2012 1:55:25 PM

**Electropherogram Summary Continued ...**



**Setpoint Deviations for sample 10 : CMW16 350bp 1:10 (9+3cycles) Soni**

Height Threshold [FU] : 20

**Overall Results for sample 10 : CMW16 350bp 1:10 (9+3cycles) Soni**

Number of peaks found: 8                      Corr. Area 1: 775.4  
 Noise: 0.3

**Peak table for sample 10 : CMW16 350bp 1:10 (9+3cycles) Soni**

Peak	Size [bp]	Conc. [pg/µl]	Molarity [pmol/l]	Observations
1	35	125.00	5,411.3	Lower Marker
2	41	3,867.24	143,879.8	
3	803	86.62	163.4	
4	1,081	297.37	417.0	
5	1,180	88.63	113.8	
6	1,434	127.40	134.7	
7	1,602	110.45	104.4	
8	1,740	304.80	265.3	
9	10,039	82.72	12.5	
10	10,380	75.00	10.9	Upper Marker

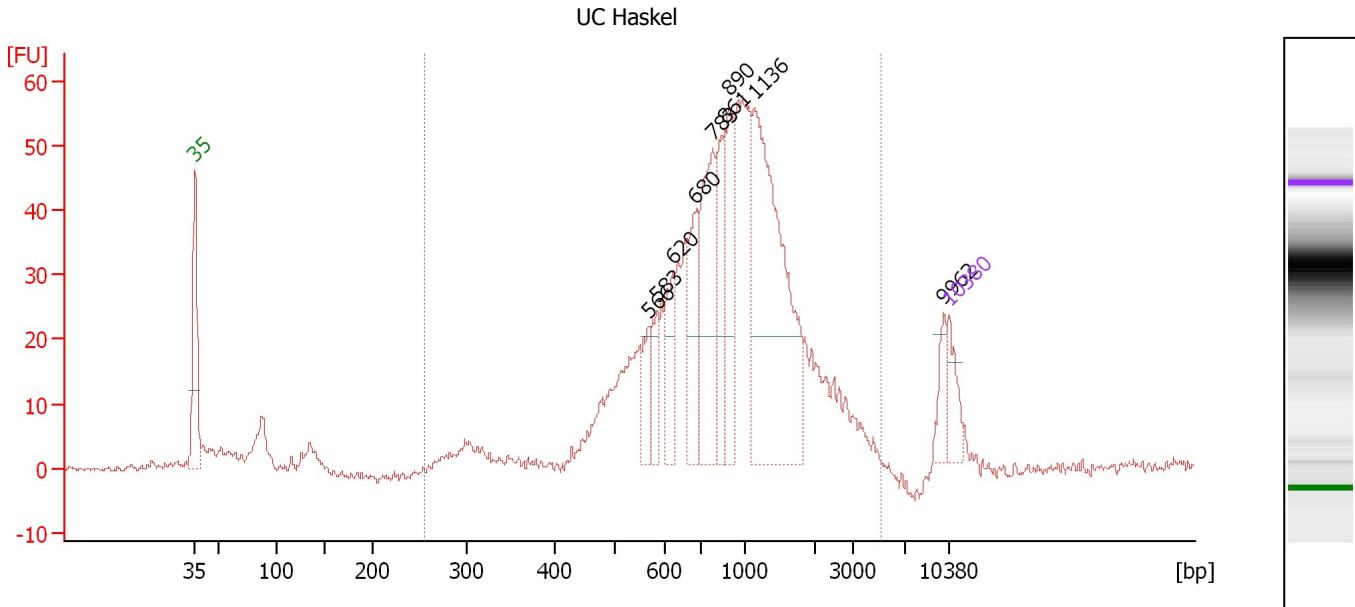
**Region table for sample 10 : CMW16 350bp 1:10 (9+3cycles) Soni**

From [bp]	Molarity [pmol/l]	Average Size [bp]	Conc. [pg/µl]	To [bp]	Corr. Area	% of Total	Size distribution in CV [%]	Color
363	5,014.3	1,241	2,714.68	4,347	775.4	46	59.4	Blue

Assay Class: High Sensitivity DNA Assay  
 Data Path: C:\...ents and Settings\Bioanalyzer\2012-04-06\2012-04-06\_005.xad

Created: 4/6/2012 1:12:26 PM  
 Modified: 4/6/2012 1:55:25 PM

**Electropherogram Summary Continued ...**



**Setpoint Deviations for sample 11 : UC Haskel**

Height Threshold [FU] : 20

**Overall Results for sample 11 : UC Haskel**

Number of peaks found: 9                      Corr. Area 1: 796.2  
 Noise: 0.3

**Peak table for sample 11 : UC Haskel**

Peak	Size [bp]	Conc. [pg/μl]	Molarity [pmol/l]	Observations
1	35	125.00	5,411.3	Lower Marker
2	566	95.27	254.9	
3	583	99.95	259.6	
4	620	141.23	345.2	
5	680	205.24	457.3	
6	783	385.71	745.9	
7	861	211.45	372.3	
8	890	223.35	380.2	
9	1,136	815.82	1,088.2	
10	9,962	65.15	9.9	
11	10,380	75.00	10.9	Upper Marker

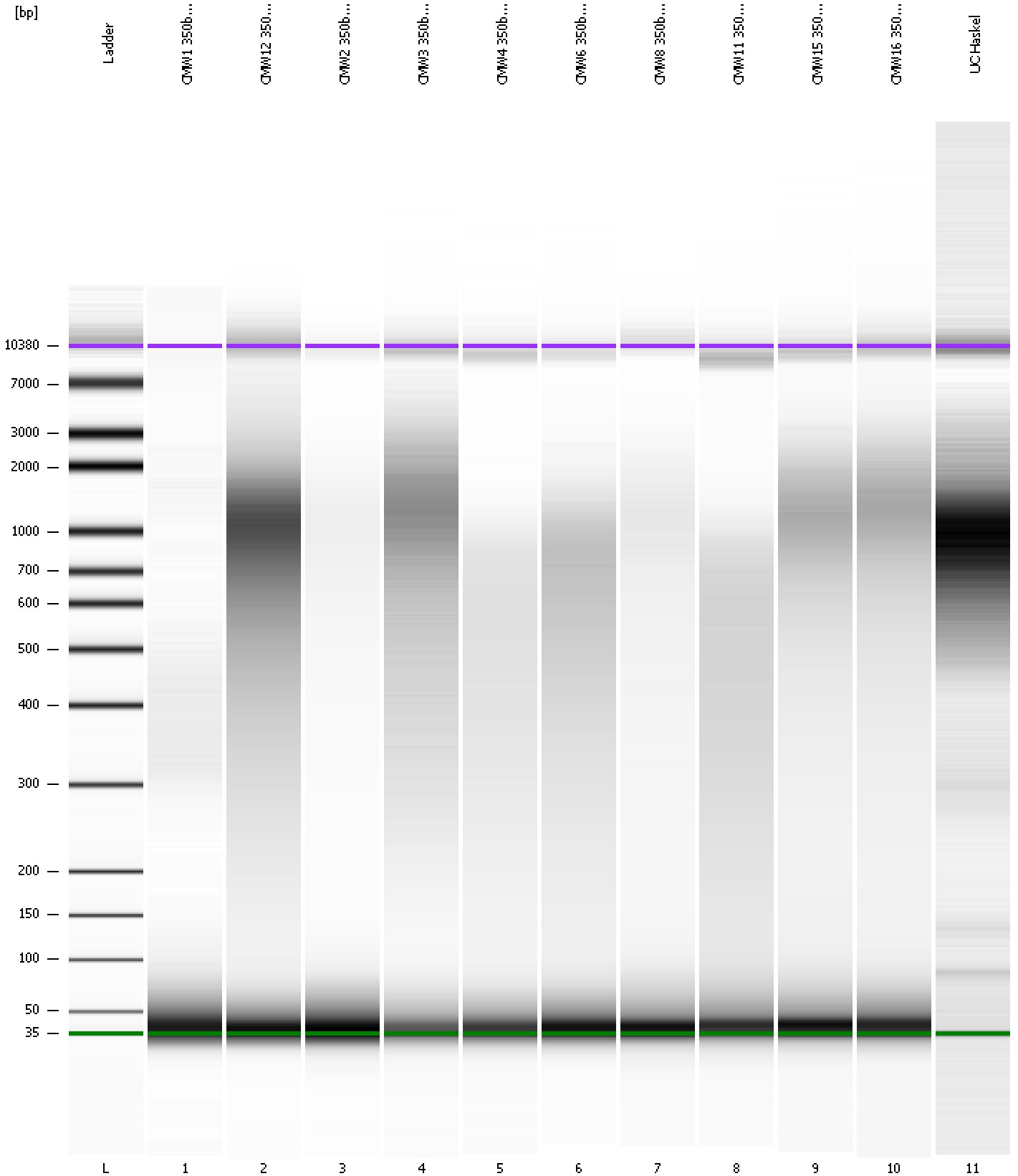
**Region table for sample 11 : UC Haskel**

From [bp]	Molarity [pmol/l]	Average Size [bp]	Conc. [pg/μl]	To [bp]	Corr. Area	% of Total	Size distribution in CV [%]	Color
255	7,079.5	1,063	3,674.68	5,168	796.2	91	57.6	Blue

Assay Class: High Sensitivity DNA Assay  
Data Path: C:\...ents and Settings\Bioanalyzer\2012-04-06\2012-04-06\_005.xad

Created: 4/6/2012 1:12:26 PM  
Modified: 4/6/2012 1:55:25 PM

**Gel Image**



Assay Class: High Sensitivity DNA Assay Created: 4/6/2012 1:12:26 PM  
 Data Path: C:\...ents and Settings\Bioanalyzer\2012-04-06\2012-04-06\_005.xad Modified: 4/6/2012 1:55:25 PM

**Run Logbook**

Description	Number	Source	Category	Sub Category	Time	Time Zone	User	Host
Run ended on port 1 (Number of wells acquired: 12)		Instrument	Run		4/6/2012 1:53:47 PM	(GMT --07:00) Pacific Standard Time	UC Davis	D8XSMGH1
Run started on port 1 (File: C:\Documents and Settings\Bioanalyzer\2012-04-06\2012-04-06_005.xad)		Instrument	Run		4/6/2012 1:12:32 PM	(GMT --07:00) Pacific Standard Time	UC Davis	D8XSMGH1
Product Number : G2938B		Instrument	Run		4/6/2012 1:12:32 PM	(GMT --07:00) Pacific Standard Time	UC Davis	D8XSMGH1
Name :		Instrument	Run		4/6/2012 1:12:32 PM	(GMT --07:00) Pacific Standard Time	UC Davis	D8XSMGH1
Vendor : Agilent Technologies		Instrument	Run		4/6/2012 1:12:32 PM	(GMT --07:00) Pacific Standard Time	UC Davis	D8XSMGH1
Serial# : DE13701086		Instrument	Run		4/6/2012 1:12:32 PM	(GMT --07:00) Pacific Standard Time	UC Davis	D8XSMGH1
Firmware : C.01.069		Instrument	Run		4/6/2012 1:12:32 PM	(GMT --07:00) Pacific Standard Time	UC Davis	D8XSMGH1
Cartridge : Electrode		Instrument	Run		4/6/2012 1:12:32 PM	(GMT --07:00) Pacific Standard Time	UC Davis	D8XSMGH1