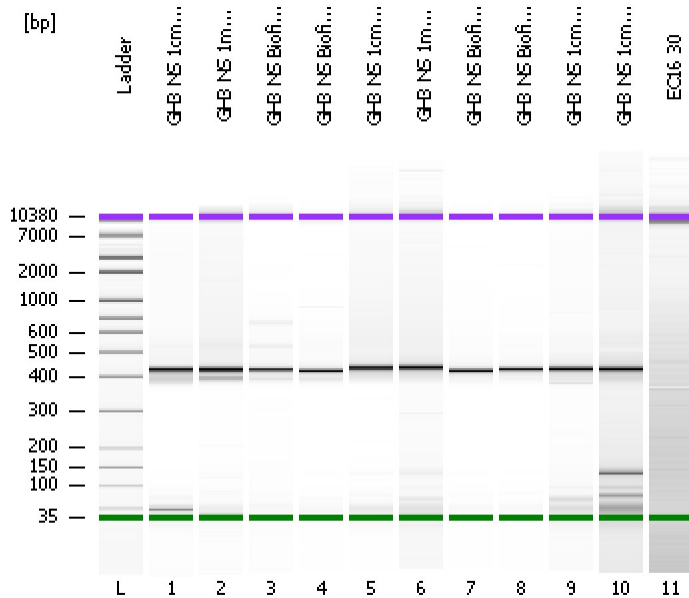


Assay Class: High Sensitivity DNA Assay  
Data Path: C:\...ents and Settings\Bioanalyzer\2012-04-06\2012-04-06\_003.xad

Created: 4/6/2012 11:16:40 AM  
Modified: 4/6/2012 12:02:33 PM

**Electrophoresis File Run Summary**



Instrument Information:

Instrument Name: DE13701086      Firmware: C.01.069  
Serial#: DE13701086      Type: G2938B

Assay Information:

Assay Origin Path: C:\Program Files\Agilent\2100 bioanalyzer\2100 expert\assays\dsDNA\High Sensitivity DNA.xsy  
Assay Class: High Sensitivity DNA Assay  
Version: 1.03  
Assay Comments: Copyright © 2003-2010 Agilent Technologies

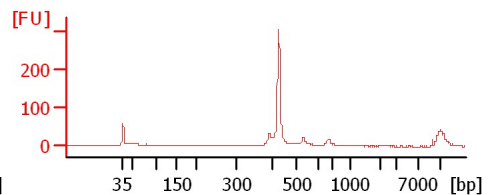
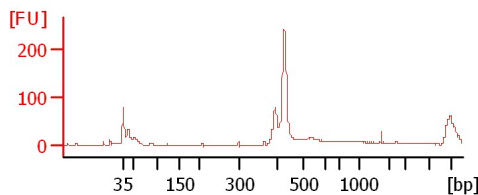
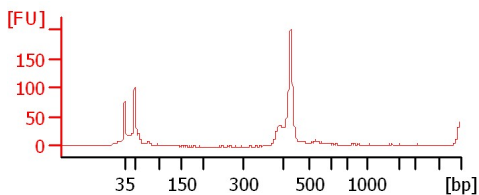
Chip Information:

Chip Lot #:   
Reagent Kit Lot #:   
Chip Comments:

**GH3 NS 1cm T9**

**GH3 NS 1mm T11**

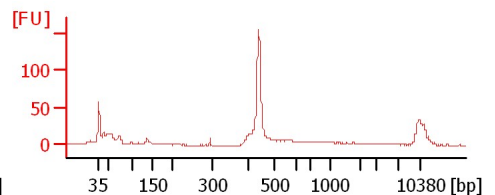
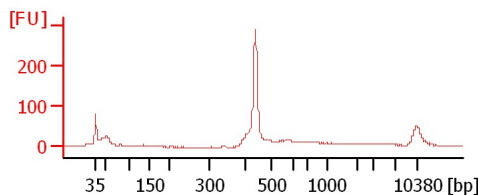
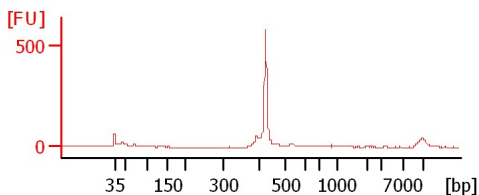
**GH3 NS Biofilm1 T13**



**GH3 NS Biofilm2 T14**

**GH3 NS 1cm T17**

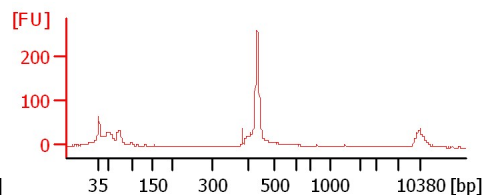
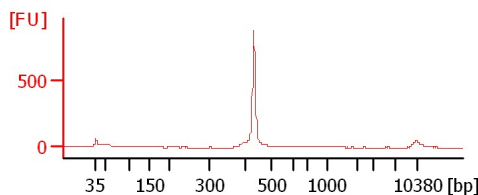
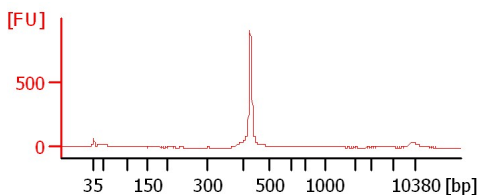
**GH3 NS 1mm T19**



**GH3 NS Biofilm1 T21**

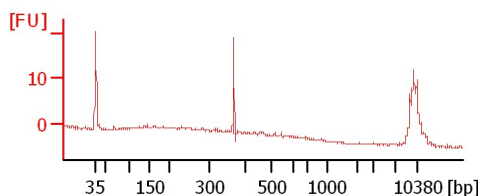
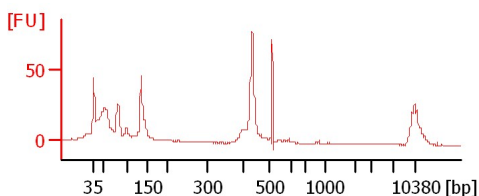
**GH3 NS Biofilm2 T22**

**GH3 NS 1cm T25**



**GH3 NS 1cm T27**

**EC16 30**



Assay Class: High Sensitivity DNA Assay  
 Data Path: C:\...ents and Settings\Bioanalyzer\2012-04-06\2012-04-06\_003.xad

Created: 4/6/2012 11:16:40 AM  
 Modified: 4/6/2012 12:02:33 PM

**Electrophoresis File Run Summary (Chip Summary)**

Sample Name	Sample Comment	Rest. Digest	Status	Observation	Result Label	Result Color
GH3 NS 1cm T9		<input type="checkbox"/>	✓			
GH3 NS 1mm T11		<input type="checkbox"/>	✓			
GH3 NS Biofilm1 T13		<input type="checkbox"/>	✓			
GH3 NS Biofilm2 T14		<input type="checkbox"/>	✓			
GH3 NS 1cm T17		<input type="checkbox"/>	✓			
GH3 NS 1mm T19		<input type="checkbox"/>	✓			
GH3 NS Biofilm1 T21		<input type="checkbox"/>	✓			
GH3 NS Biofilm2 T22		<input type="checkbox"/>	✓			
GH3 NS 1cm T25		<input type="checkbox"/>	✓			
GH3 NS 1cm T27		<input type="checkbox"/>	✓			
EC16 30		<input type="checkbox"/>	✓			
Ladder		<input type="checkbox"/>	✓			

**Chip Lot #**

**Reagent Kit Lot #**

**Chip Comments :**

Assay Class: High Sensitivity DNA Assay  
 Data Path: C:\...ents and Settings\Bioanalyzer\2012-04-06\2012-04-06\_003.xad

Created: 4/6/2012 11:16:40 AM  
 Modified: 4/6/2012 12:02:33 PM

**Electrophoresis Assay Details**

**General Analysis Settings**

Number of Available Sample and Ladder Wells (Max.) : 12  
 Minimum Visible Range [s] : 32  
 Maximum Visible Range [s] : 138  
 Start Analysis Time Range [s] : 33  
 End Analysis Time Range [s] : 137.5  
 Ladder Concentration [pg/μl] : 1950  
 Uses Standard Area for Ladder Fragments  
 Lower Marker Concentration [pg/μl] : 125  
 Upper Marker Concentration [pg/μl] : 75  
 Used Upper Marker for Quantitation  
 Standard Curve Fit is Point to Point  
 Show Data Aligned to Lower and Upper Marker

**Integrator Settings**

Integration Start Time [s] : 33.05  
 Integration End Time [s] : 137  
 Slope Threshold : 0.8  
 Height Threshold [FU] : 5  
 Area Threshold : 0.1  
 Width Threshold [s] : 0.6  
 Baseline Plateau [s] : 0.5

**Filter Settings**

Filter Width [s] : 0.5  
 Polynomial Order : 4

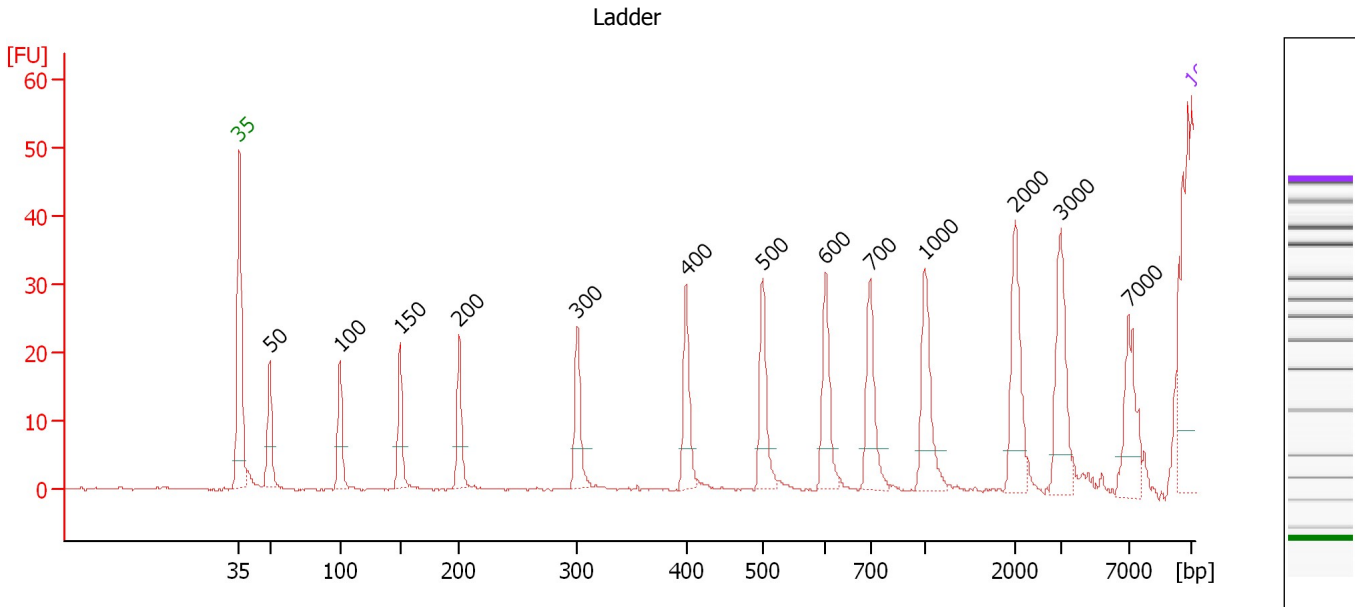
**Ladder**

Ladder Peak	Size	Area
1	35	160
2	50	210
3	100	208
4	150	221
5	200	242
6	300	270
7	400	305
8	500	306
9	600	336
10	700	321
11	1000	366
12	2000	413
13	3000	411
14	7000	400
15	10380	214

Assay Class: High Sensitivity DNA Assay  
 Data Path: C:\...ents and Settings\Bioanalyzer\2012-04-06\2012-04-06\_003.xad

Created: 4/6/2012 11:16:40 AM  
 Modified: 4/6/2012 12:02:33 PM

**Electropherogram Summary**



**Overall Results for Ladder**

Noise: 0.2

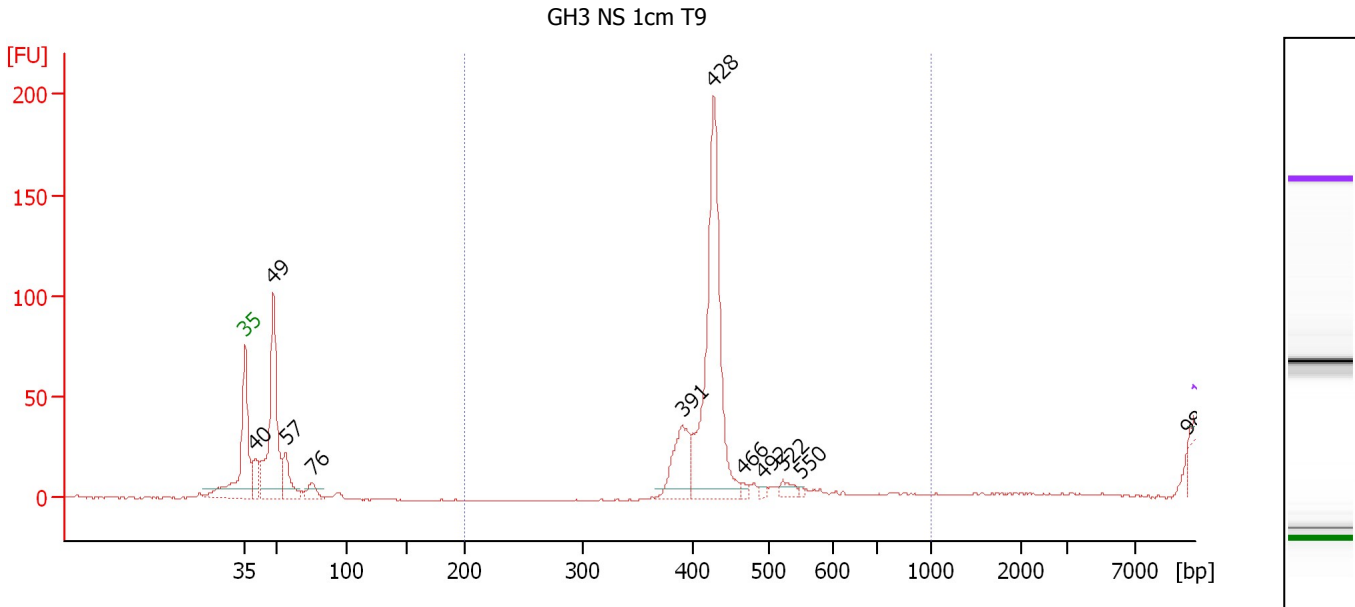
**Peak table for Ladder**

Peak	Size [bp]	Conc. [pg/μl]	Molarity [pmol/l]	Observations
1	35	125.00	5,411.3	Lower Marker
2	50	150.00	4,545.5	Ladder Peak
3	100	150.00	2,272.7	Ladder Peak
4	150	150.00	1,515.2	Ladder Peak
5	200	150.00	1,136.4	Ladder Peak
6	300	150.00	757.6	Ladder Peak
7	400	150.00	568.2	Ladder Peak
8	500	150.00	454.5	Ladder Peak
9	600	150.00	378.8	Ladder Peak
10	700	150.00	324.7	Ladder Peak
11	1,000	150.00	227.3	Ladder Peak
12	2,000	150.00	113.6	Ladder Peak
13	3,000	150.00	75.8	Ladder Peak
14	7,000	150.00	32.5	Ladder Peak
15	10,380	75.00	10.9	Upper Marker

Assay Class: High Sensitivity DNA Assay  
 Data Path: C:\...ents and Settings\Bioanalyzer\2012-04-06\2012-04-06\_003.xad

Created: 4/6/2012 11:16:40 AM  
 Modified: 4/6/2012 12:02:33 PM

**Electropherogram Summary Continued ...**



**Overall Results for sample 1 : GH3 NS 1cm T9**

Number of peaks found: 11                      Corr. Area 1: 281.2  
 Noise: 0.3

**Peak table for sample 1 : GH3 NS 1cm T9**

Peak	Size [bp]	Conc. [pg/μl]	Molarity [pmol/l]	Observations
1	35	125.00	5,411.3	Lower Marker
2	40	365.37	13,840.8	
3	49	2,163.56	66,983.0	
4	57	470.54	12,468.2	
5	76	187.87	3,740.1	
6	391	690.96	2,677.9	
7	428	2,897.09	10,252.8	
8	466	45.25	147.0	
9	492	40.37	124.3	
10	522	103.36	299.8	
11	550	28.49	78.4	
12	9,860	17.78	2.7	
13	10,380	75.00	10.9	Upper Marker

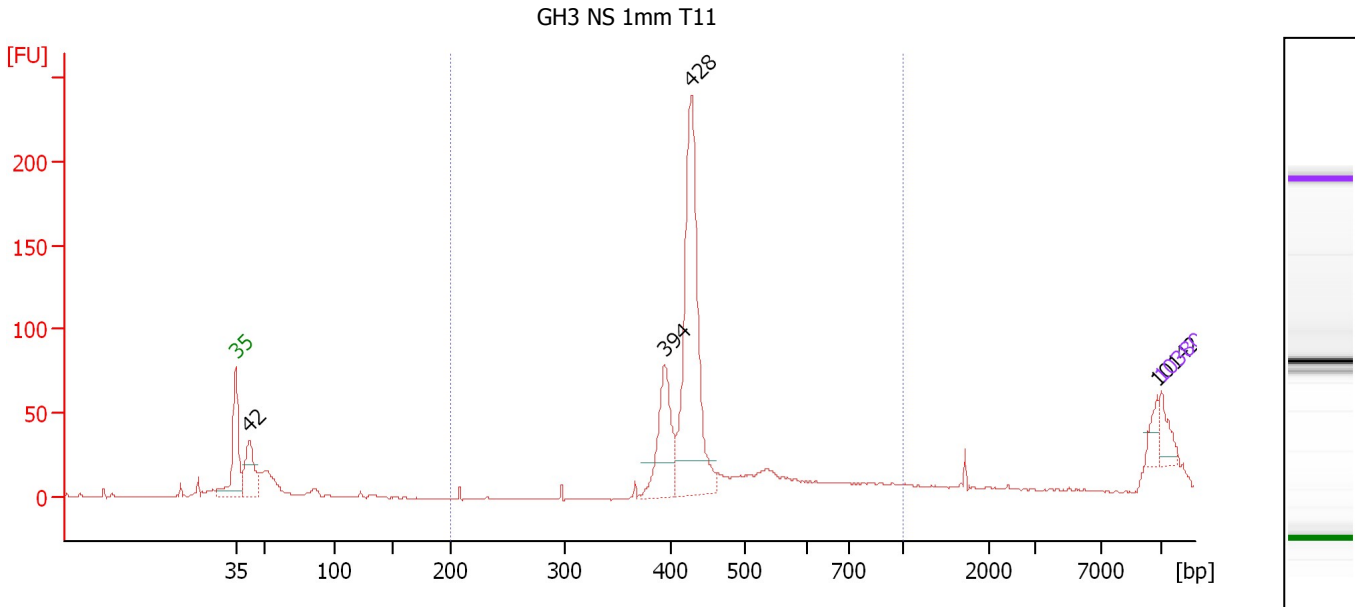
**Region table for sample 1 : GH3 NS 1cm T9**

From [bp]	Molarity [pmol/l]	Average Size [bp]	Conc. [pg/μl]	To [bp]	Corr. Area	% of Total	Size distribution in CV [%]	Color
200	9,195.6	422	2,558.40	1,000	281.2	60	3.3	Blue

Assay Class: High Sensitivity DNA Assay  
 Data Path: C:\...ents and Settings\Bioanalyzer\2012-04-06\2012-04-06\_003.xad

Created: 4/6/2012 11:16:40 AM  
 Modified: 4/6/2012 12:02:33 PM

**Electropherogram Summary Continued ...**



**Setpoint Deviations for sample 2 : GH3 NS 1mm T11**

Height Threshold [FU] : 20

**Overall Results for sample 2 : GH3 NS 1mm T11**

Number of peaks found: 4                      Corr. Area 1: 514.4  
 Noise: 0.3

**Peak table for sample 2 : GH3 NS 1mm T11**

Peak	Size [bp]	Conc. [pg/μl]	Molarity [pmol/l]	Observations
1	35	125.00	5,411.3	Lower Marker
2	42	344.98	12,434.6	
3	394	414.36	1,591.6	
4	428	1,244.51	4,407.2	
5	10,142	60.36	9.0	
6	10,380	75.00	10.9	Upper Marker

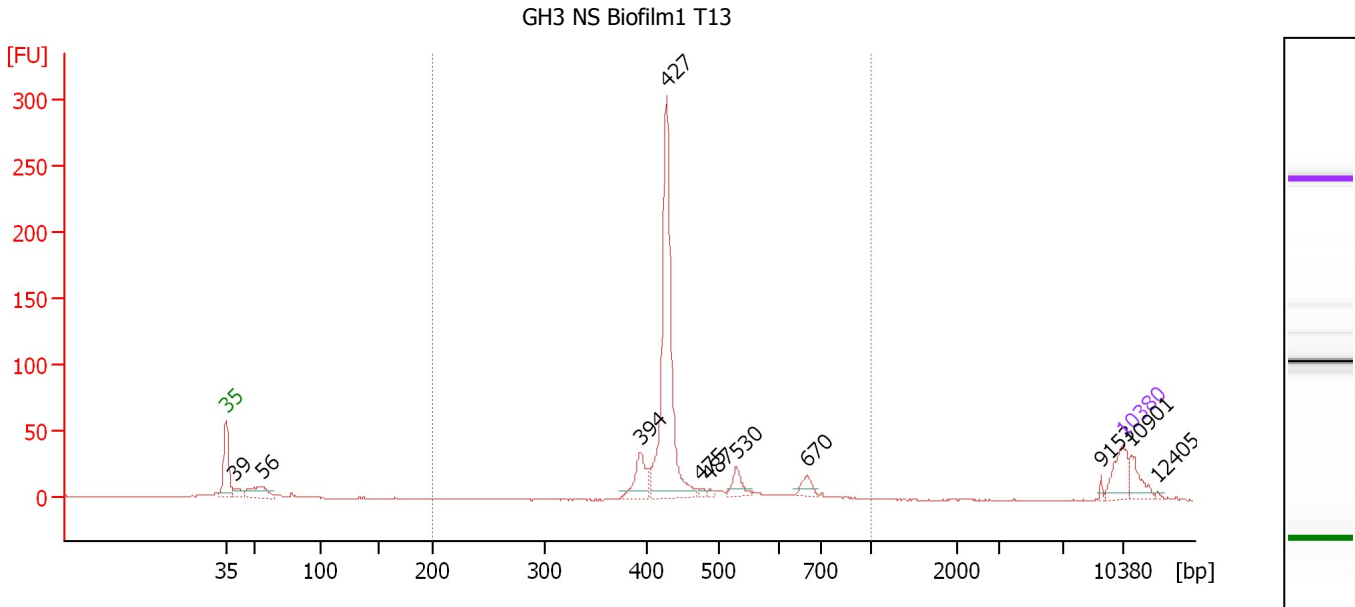
**Region table for sample 2 : GH3 NS 1mm T11**

From [bp]	Molarity [pmol/l]	Average Size [bp]	Conc. [pg/μl]	To [bp]	Corr. Area	% of Total	Size distribution in CV [%]	Color
200	5,812.8	429	1,636.87	1,000	514.4	76	7.9	Blue

Assay Class: High Sensitivity DNA Assay  
 Data Path: C:\...ents and Settings\Bioanalyzer\2012-04-06\2012-04-06\_003.xad

Created: 4/6/2012 11:16:40 AM  
 Modified: 4/6/2012 12:02:33 PM

**Electropherogram Summary Continued ...**



**Overall Results for sample 3 : GH3 NS Biofilm1 T13**

Number of peaks found: 11                      Corr. Area 1: 498.4  
 Noise: 0.3

**Peak table for sample 3 : GH3 NS Biofilm1 T13**

Peak	Size [bp]	Conc. [pg/μl]	Molarity [pmol/l]	Observations
1	35	125.00	5,411.3	Lower Marker
2	39	47.77	1,846.8	
3	56	108.97	2,939.8	
4	394	111.73	430.0	
5	427	756.25	2,682.5	
6	475	9.73	31.0	
7	487	8.41	26.2	
8	530	52.12	149.0	
9	670	36.20	81.8	
10	9,153	5.91	1.0	
11	10,380	75.00	10.9	Upper Marker
12	10,901	0.00	0.0	
13	12,405	0.00	0.0	

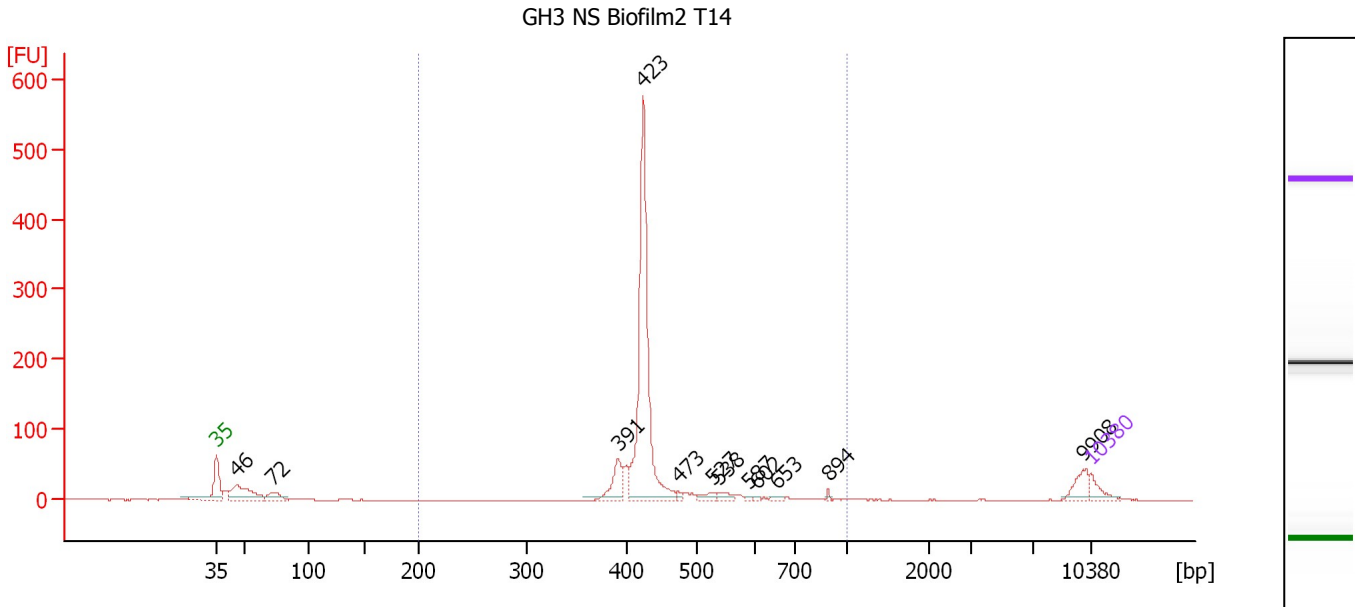
**Region table for sample 3 : GH3 NS Biofilm1 T13**

From [bp]	Molarity [pmol/l]	Average Size [bp]	Conc. [pg/μl]	To [bp]	Corr. Area	% of Total	Size distribution in CV [%]	Color
200	3,700.5	458	1,086.95	1,000	498.4	82	17.7	Blue

Assay Class: High Sensitivity DNA Assay  
 Data Path: C:\...ents and Settings\Bioanalyzer\2012-04-06\2012-04-06\_003.xad

Created: 4/6/2012 11:16:40 AM  
 Modified: 4/6/2012 12:02:33 PM

**Electropherogram Summary Continued ...**



**Overall Results for sample 4 : GH3 NS Biofilm2 T14**

Number of peaks found: 12                      Corr. Area 1: 825.9  
 Noise: 0.3

**Peak table for sample 4 : GH3 NS Biofilm2 T14**

Peak	Size [bp]	Conc. [pg/μl]	Molarity [pmol/l]	Observations
1	35	125.00	5,411.3	Lower Marker
2	46	422.39	13,861.2	
3	72	127.51	2,679.2	
4	391	245.14	950.0	
5	423	1,928.84	6,913.4	
6	473	25.93	83.1	
7	527	57.89	166.3	
8	538	53.12	149.7	
9	587	11.15	28.8	
10	602	9.02	22.7	
11	653	25.37	58.9	
12	894	12.20	20.7	
13	9,908	112.55	17.2	
14	10,380	75.00	10.9	Upper Marker

**Region table for sample 4 : GH3 NS Biofilm2 T14**

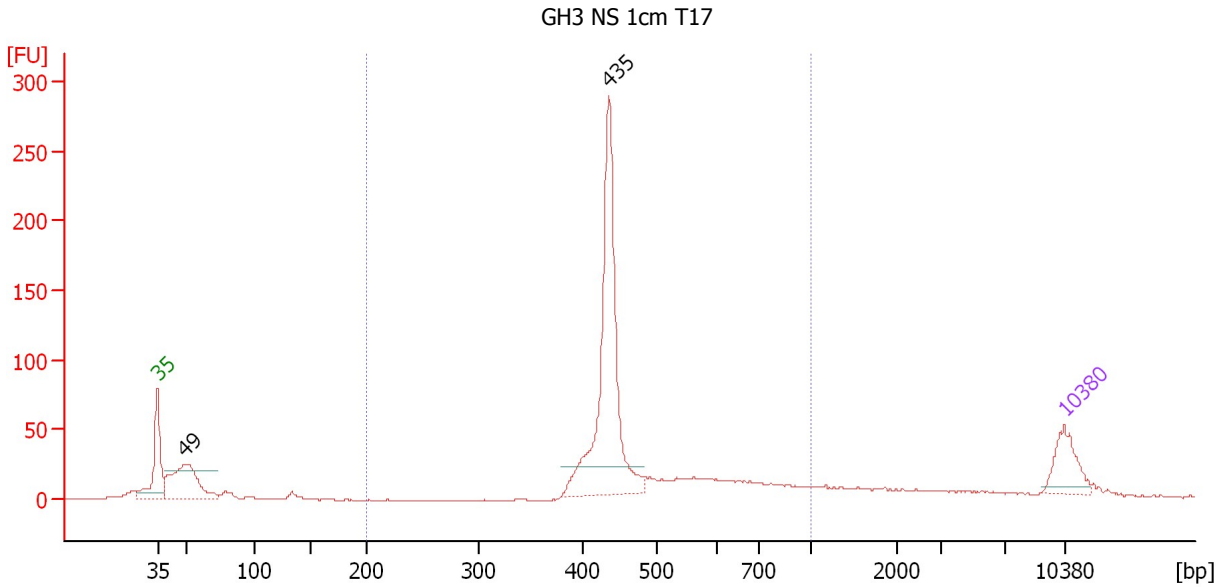
From [bp]	Molarity [pmol/l]	Average Size [bp]	Conc. [pg/μl]	To [bp]	Corr. Area	% of Total	Size distribution in CV [%]	Color
200	8,800.8	441	2,509.59	1,000	825.9	80	15.8	Blue



Assay Class: High Sensitivity DNA Assay  
 Data Path: C:\...ents and Settings\Bioanalyzer\2012-04-06\2012-04-06\_003.xad

Created: 4/6/2012 11:16:40 AM  
 Modified: 4/6/2012 12:02:33 PM

**Electropherogram Summary Continued ...**



**Setpoint Deviations for sample 5 : GH3 NS 1cm T17**

Height Threshold [FU] : 20

**Overall Results for sample 5 : GH3 NS 1cm T17**

Number of peaks found: 2                      Corr. Area 1: 704.7  
 Noise: 0.4

**Peak table for sample 5 : GH3 NS 1cm T17**

Peak	Size [bp]	Conc. [pg/μl]	Molarity [pmol/l]	Observations
1	35	125.00	5,411.3	Lower Marker
2	49	264.10	8,126.1	
3	435	625.71	2,178.9	
4	10,380	75.00	10.9	Upper Marker

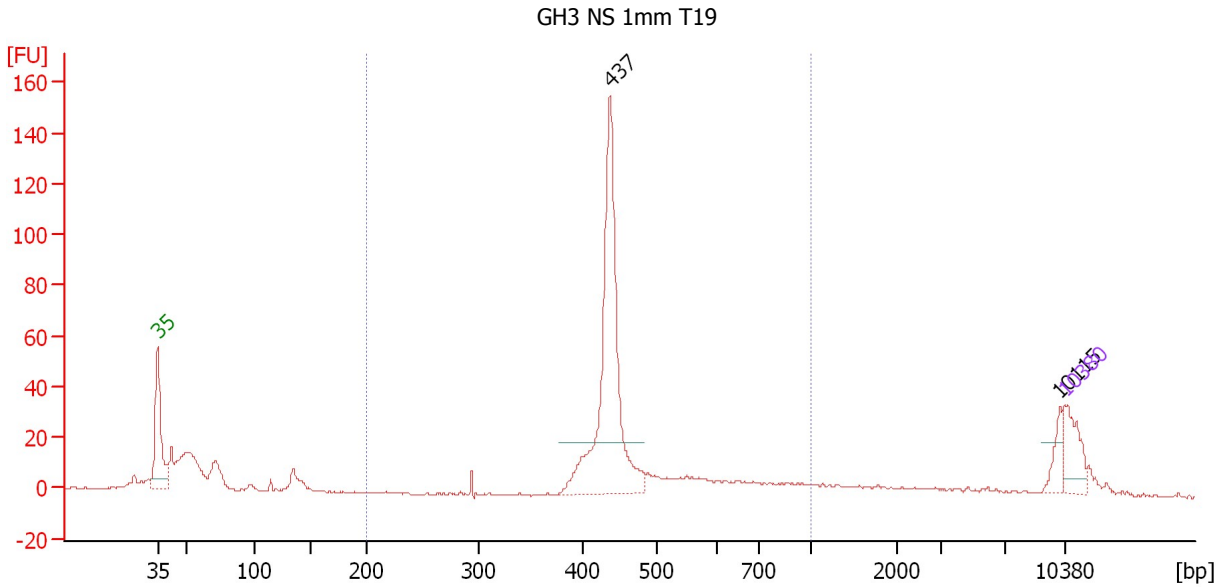
**Region table for sample 5 : GH3 NS 1cm T17**

From [bp]	Molarity [pmol/l]	Average Size [bp]	Conc. [pg/μl]	To [bp]	Corr. Area	% of Total	Size distribution in CV [%]	Color
200	2,786.8	489	855.72	1,000	704.7	72	23.8	Blue

Assay Class: High Sensitivity DNA Assay  
 Data Path: C:\...ents and Settings\Bioanalyzer\2012-04-06\2012-04-06\_003.xad

Created: 4/6/2012 11:16:40 AM  
 Modified: 4/6/2012 12:02:33 PM

**Electropherogram Summary Continued ...**



**Setpoint Deviations for sample 6 : GH3 NS 1mm T19**

Height Threshold [FU] : 20

**Overall Results for sample 6 : GH3 NS 1mm T19**

Number of peaks found: 2                      Corr. Area 1: 353.4  
 Noise: 0.4

**Peak table for sample 6 : GH3 NS 1mm T19**

Peak	Size [bp]	Conc. [pg/μl]	Molarity [pmol/l]	Observations
1	35	125.00	5,411.3	Lower Marker
2	437	691.69	2,400.1	
3	10,115	42.46	6.4	
4	10,380	75.00	10.9	Upper Marker

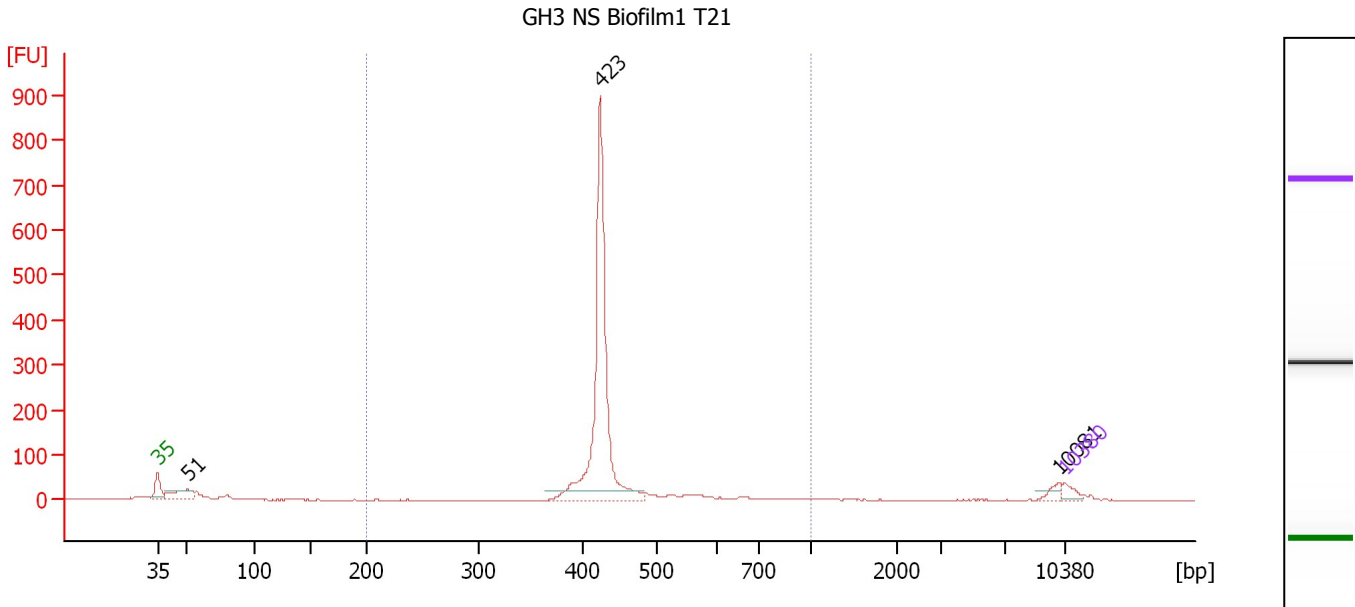
**Region table for sample 6 : GH3 NS 1mm T19**

From [bp]	Molarity [pmol/l]	Average Size [bp]	Conc. [pg/μl]	To [bp]	Corr. Area	% of Total	Size distribution in CV [%]	Color
200	2,828.9	481	857.78	1,000	353.4	62	22.8	Blue

Assay Class: High Sensitivity DNA Assay  
 Data Path: C:\...ents and Settings\Bioanalyzer\2012-04-06\2012-04-06\_003.xad

Created: 4/6/2012 11:16:40 AM  
 Modified: 4/6/2012 12:02:33 PM

**Electropherogram Summary Continued ...**



**Setpoint Deviations for sample 7 : GH3 NS Biofilm1 T21**

Height Threshold [FU] : 20

**Overall Results for sample 7 : GH3 NS Biofilm1 T21**

Number of peaks found: 3                      Corr. Area 1: 1,236.8  
 Noise: 0.3

**Peak table for sample 7 : GH3 NS Biofilm1 T21**

Peak	Size [bp]	Conc. [pg/μl]	Molarity [pmol/l]	Observations
1	35	125.00	5,411.3	Lower Marker
2	51	385.30	11,439.3	
3	423	3,176.70	11,387.0	
4	10,081	78.18	11.8	
5	10,380	75.00	10.9	Upper Marker

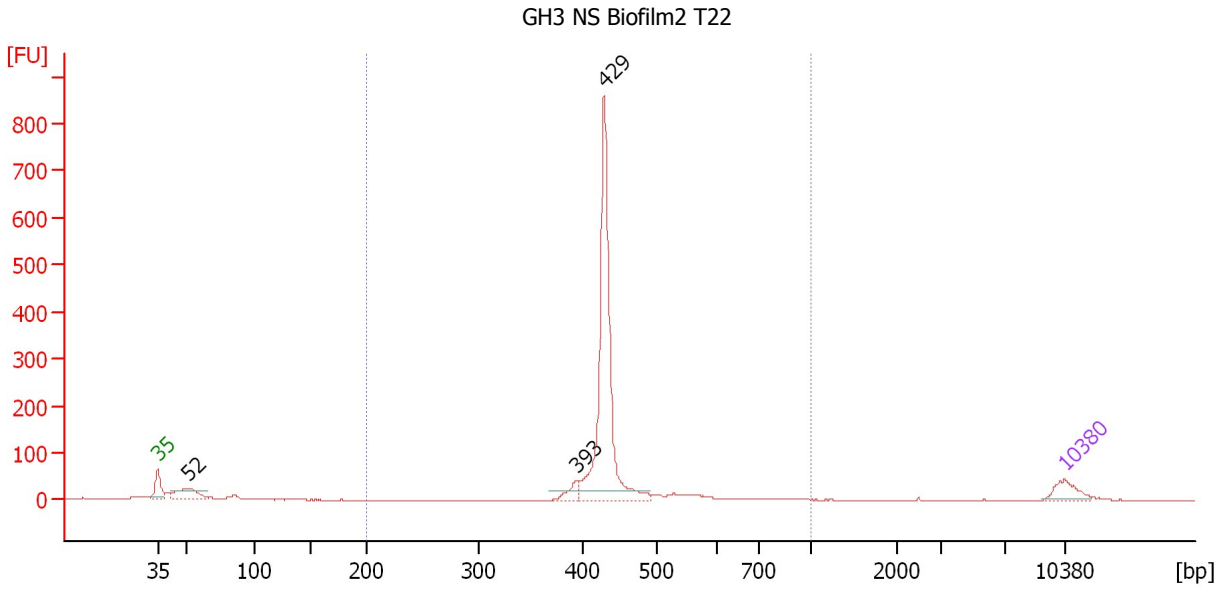
**Region table for sample 7 : GH3 NS Biofilm1 T21**

From [bp]	Molarity [pmol/l]	Average Size [bp]	Conc. [pg/μl]	To [bp]	Corr. Area	% of Total	Size distribution in CV [%]	Color
200	12,121.9	439	3,454.58	1,000	1,236.8	82	14.1	Blue

Assay Class: High Sensitivity DNA Assay  
 Data Path: C:\...ents and Settings\Bioanalyzer\2012-04-06\2012-04-06\_003.xad

Created: 4/6/2012 11:16:40 AM  
 Modified: 4/6/2012 12:02:33 PM

**Electropherogram Summary Continued ...**



**Setpoint Deviations for sample 8 : GH3 NS Biofilm2 T22**

Height Threshold [FU] : 20

**Overall Results for sample 8 : GH3 NS Biofilm2 T22**

Number of peaks found: 3                      Corr. Area 1: 1,188.5  
 Noise: 0.3

**Peak table for sample 8 : GH3 NS Biofilm2 T22**

Peak	Size [bp]	Conc. [pg/μl]	Molarity [pmol/l]	Observations
1	35	125.00	5,411.3	Lower Marker
2	52	208.78	6,119.5	
3	393	71.97	277.1	
4	429	1,334.38	4,717.3	
5	10,380	75.00	10.9	Upper Marker

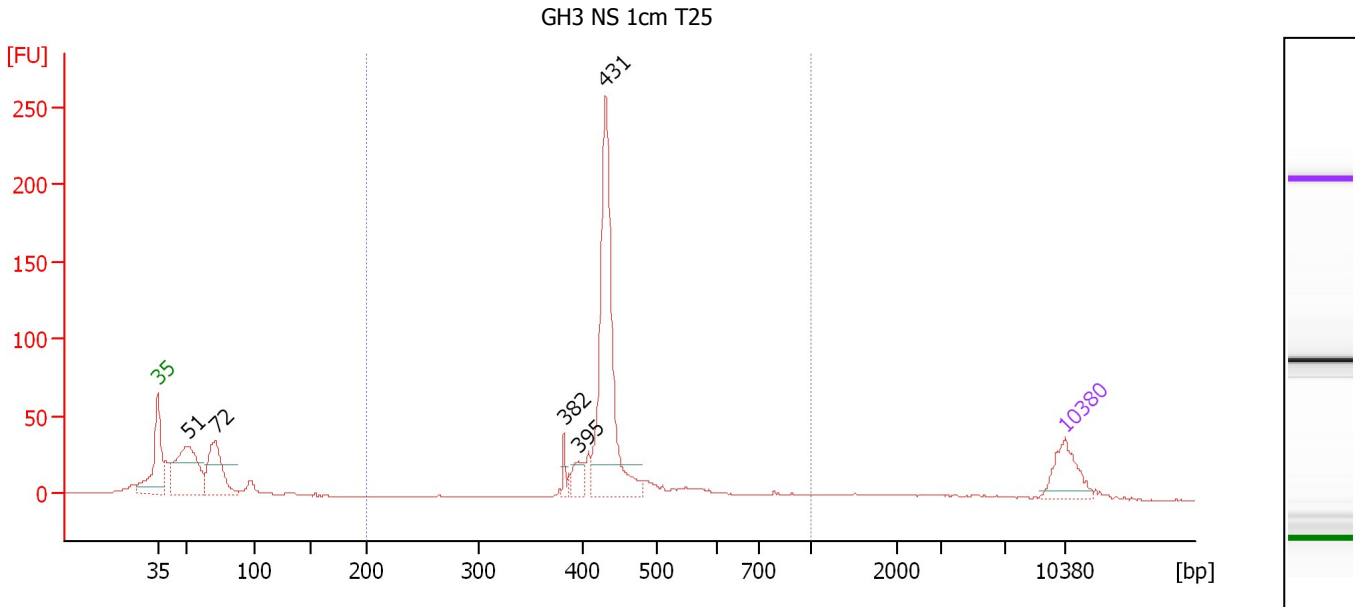
**Region table for sample 8 : GH3 NS Biofilm2 T22**

From [bp]	Molarity [pmol/l]	Average Size [bp]	Conc. [pg/μl]	To [bp]	Corr. Area	% of Total	Size distribution in CV [%]	Color
200	5,275.7	443	1,518.96	1,000	1,188.5	83	13.7	Blue

Assay Class: High Sensitivity DNA Assay  
 Data Path: C:\...ents and Settings\Bioanalyzer\2012-04-06\2012-04-06\_003.xad

Created: 4/6/2012 11:16:40 AM  
 Modified: 4/6/2012 12:02:33 PM

**Electropherogram Summary Continued ...**



**Setpoint Deviations for sample 9 : GH3 NS 1cm T25**

Height Threshold [FU] : 20

**Overall Results for sample 9 : GH3 NS 1cm T25**

Number of peaks found: 5                      Corr. Area 1: 489.6  
 Noise: 0.2

**Peak table for sample 9 : GH3 NS 1cm T25**

Peak	Size [bp]	Conc. [pg/μl]	Molarity [pmol/l]	Observations
1	35	125.00	5,411.3	Lower Marker
2	51	315.72	9,314.2	
3	72	214.68	4,539.2	
4	382	22.19	88.1	
5	395	44.64	171.3	
6	431	538.43	1,894.7	
7	10,380	75.00	10.9	Upper Marker

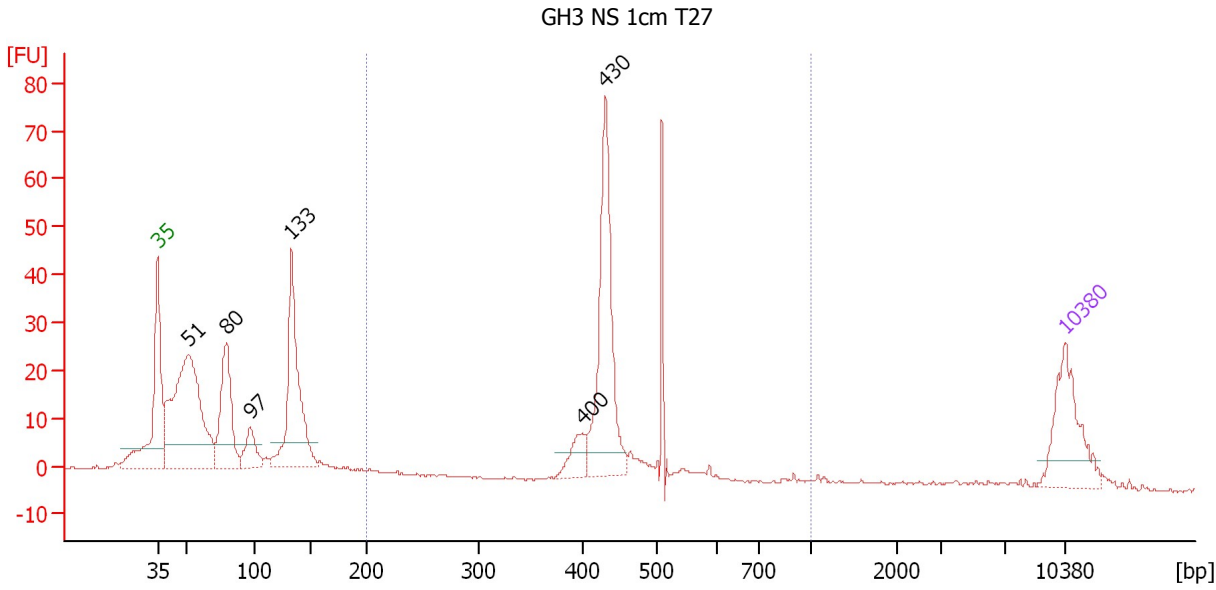
**Region table for sample 9 : GH3 NS 1cm T25**

From [bp]	Molarity [pmol/l]	Average Size [bp]	Conc. [pg/μl]	To [bp]	Corr. Area	% of Total	Size distribution in CV [%]	Color
200	2,498.0	451	725.92	1,000	489.6	59	17.3	Blue

Assay Class: High Sensitivity DNA Assay  
 Data Path: C:\...ents and Settings\Bioanalyzer\2012-04-06\2012-04-06\_003.xad

Created: 4/6/2012 11:16:40 AM  
 Modified: 4/6/2012 12:02:33 PM

**Electropherogram Summary Continued ...**



**Overall Results for sample 10 : GH3 NS 1cm T27**

Number of peaks found: 6                      Corr. Area 1: 180.3  
 Noise: 0.2

**Peak table for sample 10 : GH3 NS 1cm T27**

Peak	Size [bp]	Conc. [pg/μl]	Molarity [pmol/l]	Observations
1	35	125.00	5,411.3	Lower Marker
2	51	370.84	10,990.3	
3	80	146.88	2,794.8	
4	97	45.85	712.9	
5	133	216.20	2,464.4	
6	400	32.85	124.5	
7	430	211.50	744.4	
8	10,380	75.00	10.9	Upper Marker

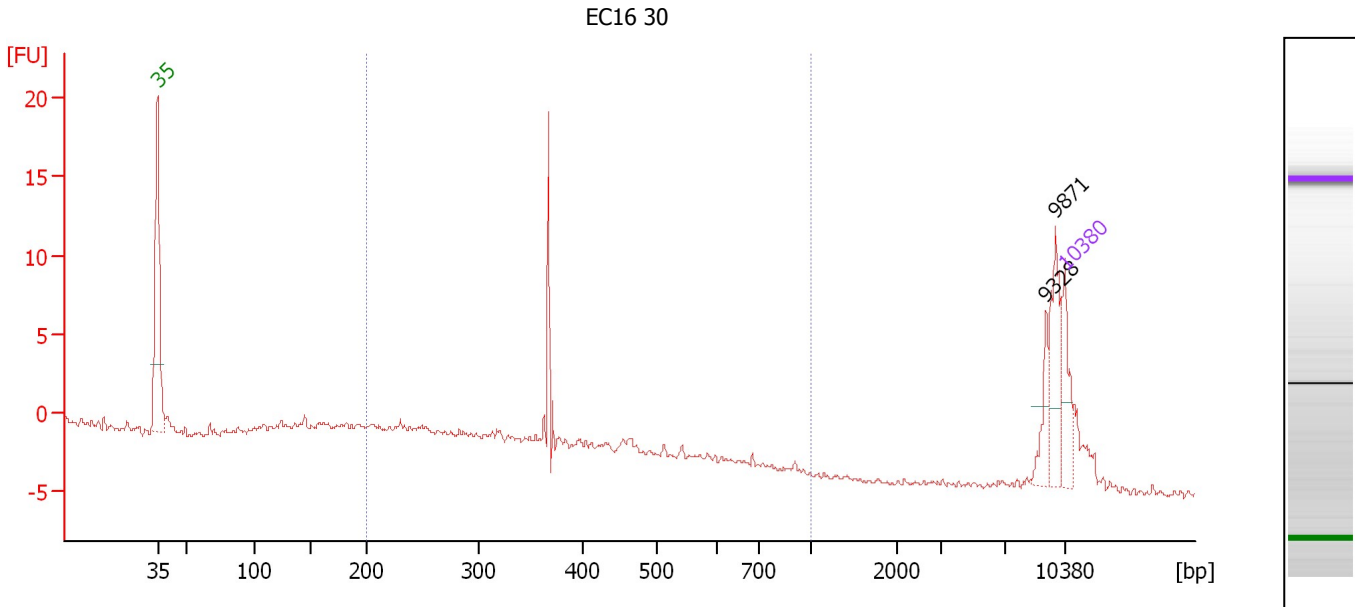
**Region table for sample 10 : GH3 NS 1cm T27**

From [bp]	Molarity [pmol/l]	Average Size [bp]	Conc. [pg/μl]	To [bp]	Corr. Area	% of Total	Size distribution in CV [%]	Color
200	1,177.7	450	337.51	1,000	180.3	35	16.3	Blue

Assay Class: High Sensitivity DNA Assay  
 Data Path: C:\...ents and Settings\Bioanalyzer\2012-04-06\2012-04-06\_003.xad

Created: 4/6/2012 11:16:40 AM  
 Modified: 4/6/2012 12:02:33 PM

**Electropherogram Summary Continued ...**



**Overall Results for sample 11 : EC16 30**

Number of peaks found: 2                      Corr. Area 1: 29.3  
 Noise: 0.2

**Peak table for sample 11 : EC16 30**

Peak	Size [bp]	Conc. [pg/μl]	Molarity [pmol/l]	Observations
1	35	125.00	5,411.3	Lower Marker
2	9,328	49.37	8.0	
3	9,871	109.55	16.8	
4	10,380	75.00	10.9	Upper Marker

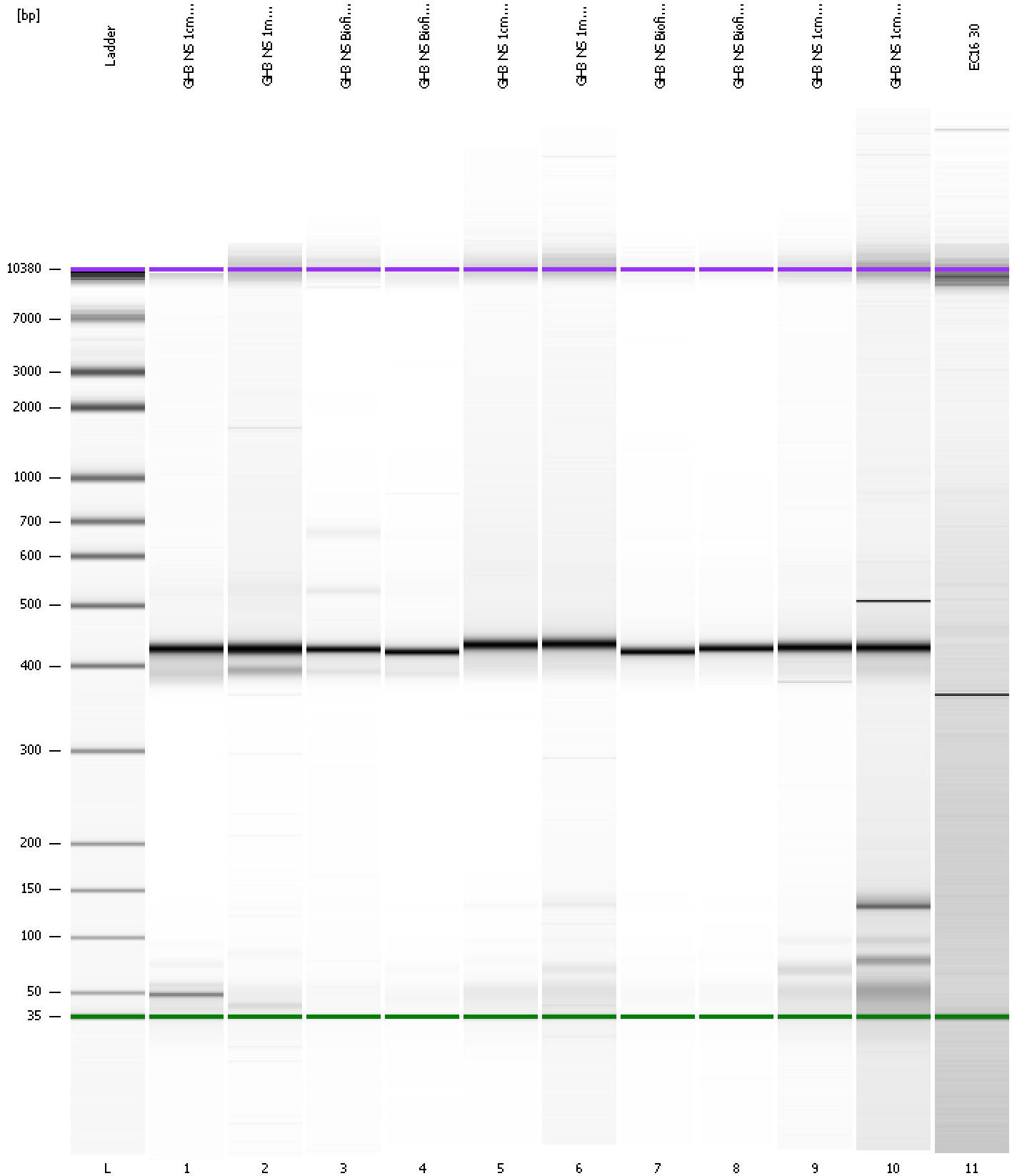
**Region table for sample 11 : EC16 30**

From [bp]	Molarity [pmol/l]	Average Size [bp]	Conc. [pg/μl]	To [bp]	Corr. Area	% of Total	Size distribution in CV [%]	Color
200	2,047.2	356	429.79	1,000	29.3	48	29.0	Blue

Assay Class: High Sensitivity DNA Assay  
Data Path: C:\...ents and Settings\Bioanalyzer\2012-04-06\2012-04-06\_003.xad

Created: 4/6/2012 11:16:40 AM  
Modified: 4/6/2012 12:02:33 PM

**Gel Image**





Assay Class: High Sensitivity DNA Assay  
 Data Path: C:\...ents and Settings\Bioanalyzer\2012-04-06\2012-04-06\_003.xad

Created: 4/6/2012 11:16:40 AM  
 Modified: 4/6/2012 12:02:33 PM

**Run Logbook**

Description	Number	Source	Category	Sub Category	Time	Time Zone	User	Host
Run ended on port 1 (Number of wells acquired: 12)		Instrument	Run		4/6/2012 11:57:57 AM	(GMT --07:00) Pacific Standard Time	UC Davis	D8XSMGH1
Run started on port 1 (File: C:\Documents and Settings\Bioanalyzer\2012-04-06\2012-04-06_003.xad)		Instrument	Run		4/6/2012 11:16:46 AM	(GMT --07:00) Pacific Standard Time	UC Davis	D8XSMGH1
Product Number : G2938B		Instrument	Run		4/6/2012 11:16:46 AM	(GMT --07:00) Pacific Standard Time	UC Davis	D8XSMGH1
Name :		Instrument	Run		4/6/2012 11:16:46 AM	(GMT --07:00) Pacific Standard Time	UC Davis	D8XSMGH1
Vendor : Agilent Technologies		Instrument	Run		4/6/2012 11:16:46 AM	(GMT --07:00) Pacific Standard Time	UC Davis	D8XSMGH1
Serial# : DE13701086		Instrument	Run		4/6/2012 11:16:46 AM	(GMT --07:00) Pacific Standard Time	UC Davis	D8XSMGH1
Firmware : C.01.069		Instrument	Run		4/6/2012 11:16:46 AM	(GMT --07:00) Pacific Standard Time	UC Davis	D8XSMGH1
Cartridge : Electrode		Instrument	Run		4/6/2012 11:16:46 AM	(GMT --07:00) Pacific Standard Time	UC Davis	D8XSMGH1