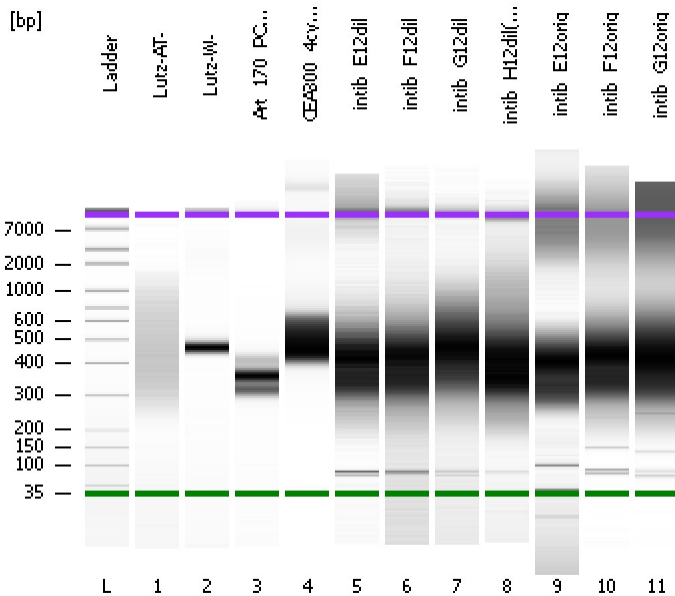


Assay Class: High Sensitivity DNA Assay  
Data Path: C:\...ents and Settings\Bioanalyzer\2012-04-09\2012-04-09\_003.xad

Created: 4/9/2012 11:22:51 AM  
Modified: 4/10/2012 5:17:27 PM

**Electrophoresis File Run Summary**



Instrument Information:

Instrument Name: DE13701086      Firmware: C.01.069  
Serial#: DE13701086      Type: G2938B

Assay Information:

Assay Origin Path: C:\Program Files\Agilent\2100 bioanalyzer\2100 expert\assays\dsDNA\High Sensitivity DNA.xsy  
Assay Class: High Sensitivity DNA Assay  
Version: 1.03  
Assay Comments: Copyright © 2003-2010 Agilent Technologies

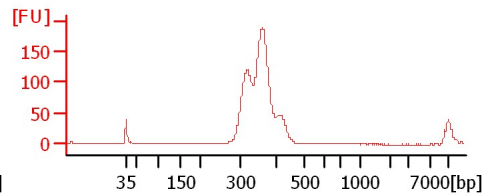
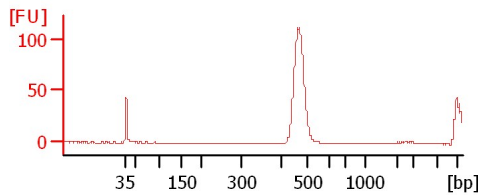
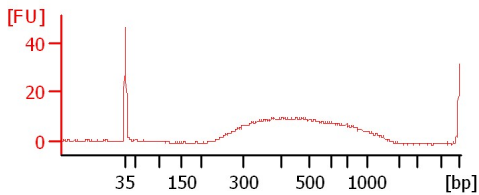
Chip Information:

Chip Lot #:      Reagent Kit Lot #:      Chip Comments:

Lutz-AT-

Lutz-W-

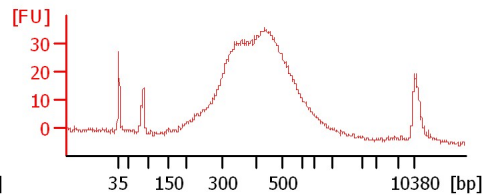
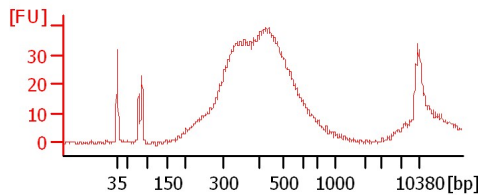
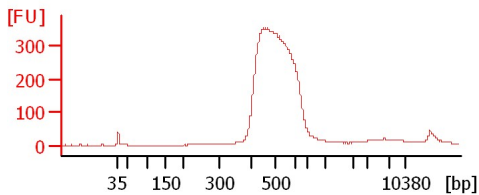
Art\_170\_PCRfree



CEA300\_4cycles

intib\_E12dil

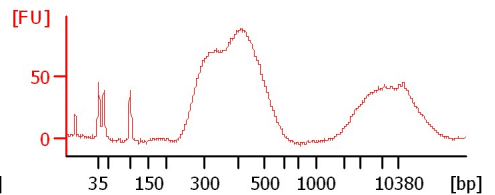
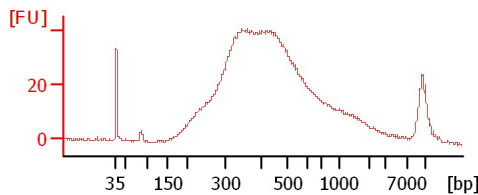
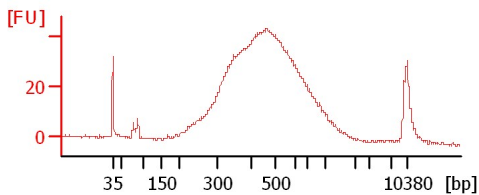
intib\_F12dil



intib\_G12dil

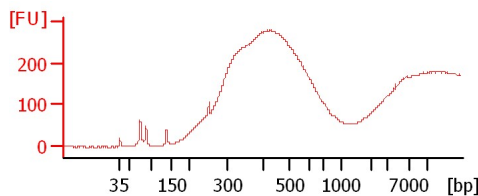
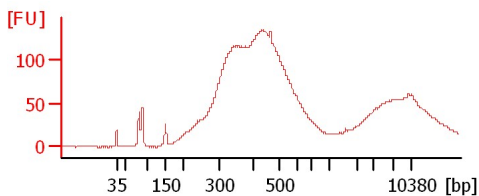
intib\_H12dil(CIA)

intib\_E12orig



intib\_F12orig

intib\_G12orig



Assay Class: High Sensitivity DNA Assay  
 Data Path: C:\...ents and Settings\Bioanalyzer\2012-04-09\2012-04-09\_003.xad

Created: 4/9/2012 11:22:51 AM  
 Modified: 4/10/2012 5:17:27 PM

**Electrophoresis File Run Summary (Chip Summary)**

Sample Name	Sample Comment	Rest. Digest	Status	Observation	Result Label	Result Color
Lutz-AT-		<input type="checkbox"/>	✓			
Lutz-W-		<input type="checkbox"/>	✓			
Art_170_PCRfree		<input type="checkbox"/>	✓			
CEA300_4cycles		<input type="checkbox"/>	✓			
intib_E12dil		<input type="checkbox"/>	✓			
intib_F12dil		<input type="checkbox"/>	✓			
intib_G12dil		<input type="checkbox"/>	✓			
intib_H12dil(CIA)		<input type="checkbox"/>	✓			
intib_E12orig		<input type="checkbox"/>	✓			
intib_F12orig		<input type="checkbox"/>	✓			
intib_G12orig		<input type="checkbox"/>	✓			
Ladder		<input type="checkbox"/>	✓			

**Chip Lot #**

**Reagent Kit Lot #**

**Chip Comments :**

Assay Class: High Sensitivity DNA Assay  
Data Path: C:\...ents and Settings\Bioanalyzer\2012-04-09\2012-04-09\_003.xad

Created: 4/9/2012 11:22:51 AM  
Modified: 4/10/2012 5:17:27 PM

**Electrophoresis Assay Details**

**General Analysis Settings**

Number of Available Sample and Ladder Wells (Max.) : 12  
Minimum Visible Range [s] : 32  
Maximum Visible Range [s] : 138  
Start Analysis Time Range [s] : 33  
End Analysis Time Range [s] : 137.5  
Ladder Concentration [pg/μl] : 1950  
Uses Standard Area for Ladder Fragments  
Lower Marker Concentration [pg/μl] : 125  
Upper Marker Concentration [pg/μl] : 75  
Used Upper Marker for Quantitation  
Standard Curve Fit is Point to Point  
Show Data Aligned to Lower and Upper Marker

**Integrator Settings**

Integration Start Time [s] : 33.05  
Integration End Time [s] : 137  
Slope Threshold : 0.8  
Height Threshold [FU] : 5  
Area Threshold : 0.1  
Width Threshold [s] : 0.6  
Baseline Plateau [s] : 0.5

**Filter Settings**

Filter Width [s] : 0.5  
Polynomial Order : 4

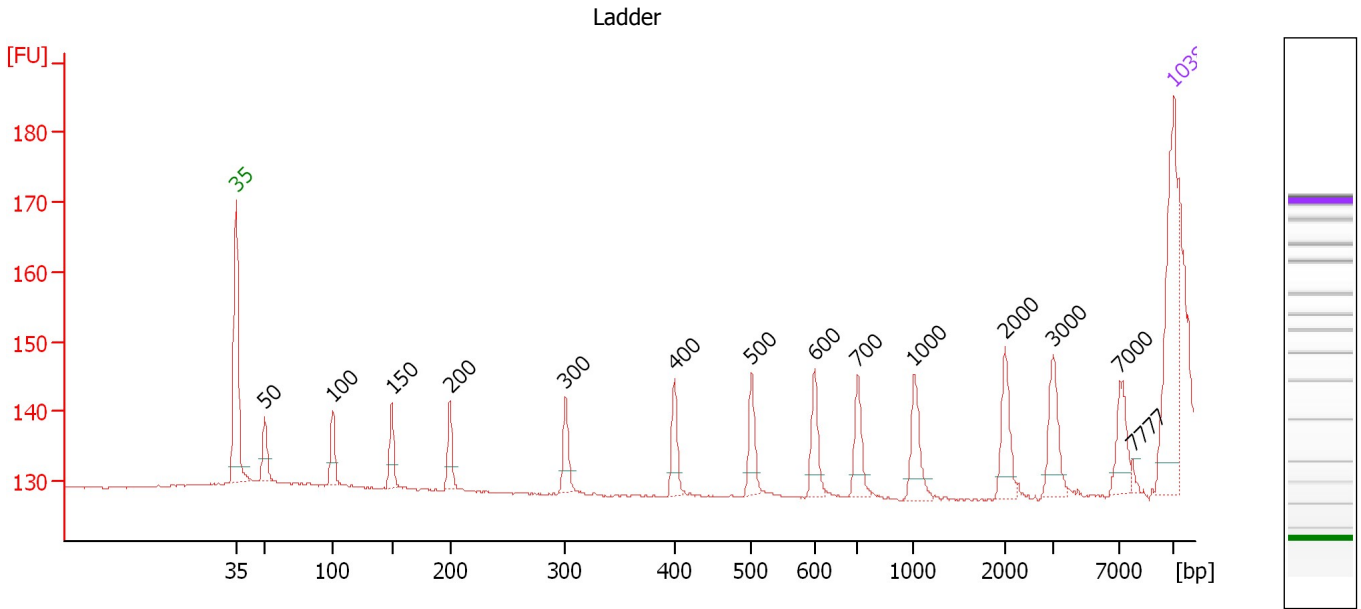
**Ladder**

Ladder Peak	Size	Area
1	35	160
2	50	210
3	100	208
4	150	221
5	200	242
6	300	270
7	400	305
8	500	306
9	600	336
10	700	321
11	1000	366
12	2000	413
13	3000	411
14	7000	400
15	10380	214

Assay Class: High Sensitivity DNA Assay  
 Data Path: C:\...ents and Settings\Bioanalyzer\2012-04-09\2012-04-09\_003.xad

Created: 4/9/2012 11:22:51 AM  
 Modified: 4/10/2012 5:17:27 PM

**Electropherogram Summary**



**Overall Results for Ladder**

Noise: 0.1

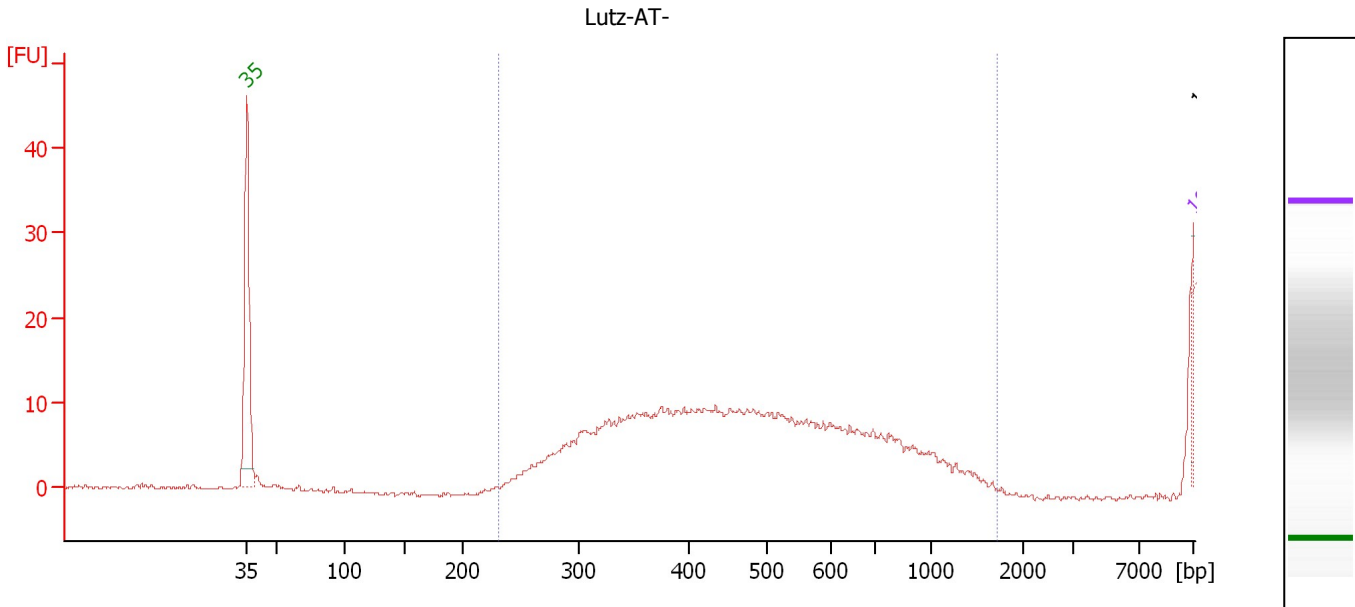
**Peak table for Ladder**

Peak	Size [bp]	Conc. [pg/µl]	Molarity [pmol/l]	Observations
1	35	125.00	5,411.3	Lower Marker
2	50	150.00	4,545.5	Ladder Peak
3	100	150.00	2,272.7	Ladder Peak
4	150	150.00	1,515.2	Ladder Peak
5	200	150.00	1,136.4	Ladder Peak
6	300	150.00	757.6	Ladder Peak
7	400	150.00	568.2	Ladder Peak
8	500	150.00	454.5	Ladder Peak
9	600	150.00	378.8	Ladder Peak
10	700	150.00	324.7	Ladder Peak
11	1,000	150.00	227.3	Ladder Peak
12	2,000	150.00	113.6	Ladder Peak
13	3,000	150.00	75.8	Ladder Peak
14	7,000	150.00	32.5	Ladder Peak
15	7,777	0.00	0.0	
16	10,380	75.00	10.9	Upper Marker

Assay Class: High Sensitivity DNA Assay  
 Data Path: C:\...ents and Settings\Bioanalyzer\2012-04-09\2012-04-09\_003.xad

Created: 4/9/2012 11:22:51 AM  
 Modified: 4/10/2012 5:17:27 PM

**Electropherogram Summary Continued ...**



**Overall Results for sample 1 : Lutz-AT-**

Number of peaks found: 1                      Corr. Area 1: 34.8  
 Noise: 0.2

**Peak table for sample 1 : Lutz-AT-**

Peak	Size [bp]	Conc. [pg/μl]	Molarity [pmol/l]	Observations
1	35	125.00	5,411.3	Lower Marker
2	10,648	313.23	44.6	
3	10,380	75.00	10.9	Upper Marker

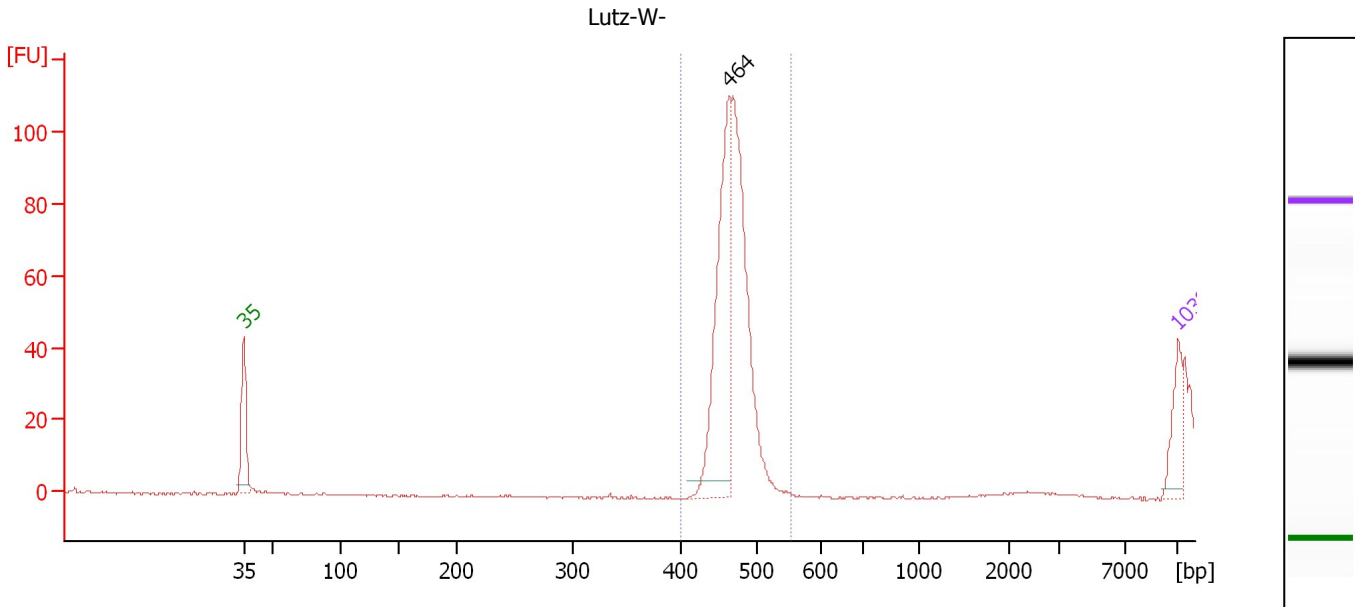
**Region table for sample 1 : Lutz-AT-**

From [bp]	Molarity [pmol/l]	Average Size [bp]	Conc. [pg/μl]	To [bp]	Corr. Area	% of Total	Size distribution in CV [%]	Color
231	4,811.0	396	1,230.56	1,724	34.8	100	13.6	Blue

Assay Class: High Sensitivity DNA Assay  
 Data Path: C:\...ents and Settings\Bioanalyzer\2012-04-09\2012-04-09\_003.xad

Created: 4/9/2012 11:22:51 AM  
 Modified: 4/10/2012 5:17:27 PM

**Electropherogram Summary Continued ...**



**Overall Results for sample 2 : Lutz-W-**

Number of peaks found: 1                      Corr. Area 1: 258.5  
 Noise: 0.2

**Peak table for sample 2 : Lutz-W-**

Peak	Size [bp]	Conc. [pg/μl]	Molarity [pmol/l]	Observations
1	35	125.00	5,411.3	Lower Marker
2	464	536.77	1,754.5	
3	10,380	75.00	10.9	Upper Marker

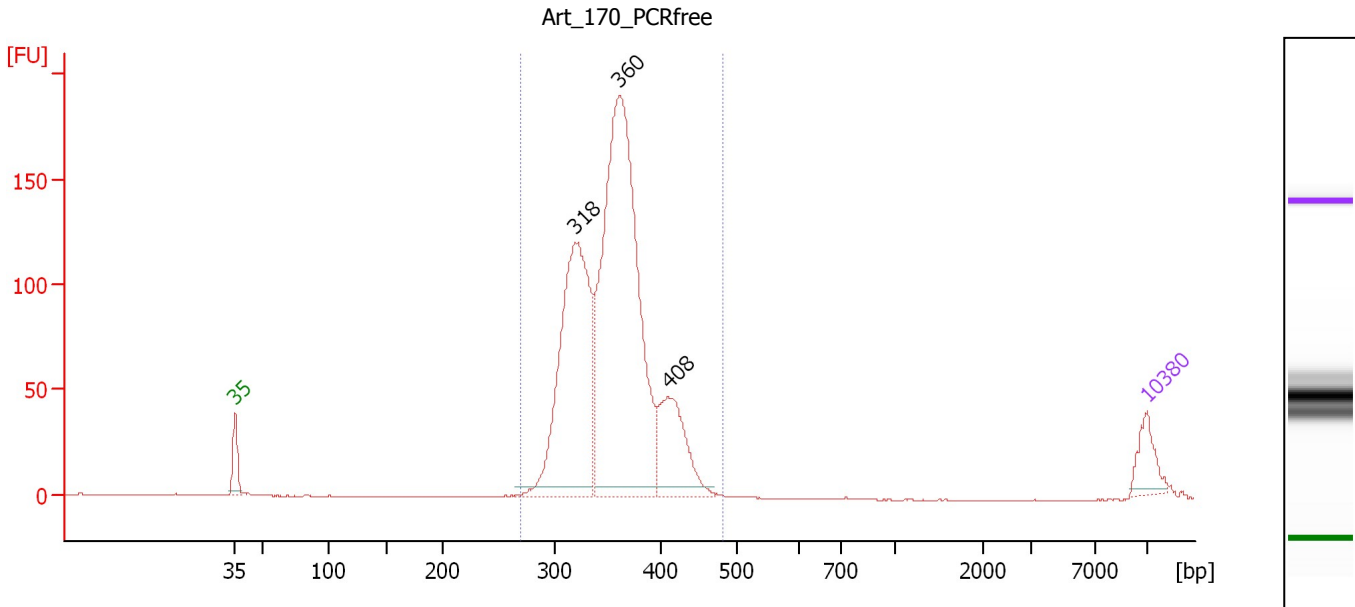
**Region table for sample 2 : Lutz-W-**

From [bp]	Molarity [pmol/l]	Average Size [bp]	Conc. [pg/μl]	To [bp]	Corr. Area	% of Total	Size distribution in CV [%]	Color
400	2,615.2	467	805.90	554	258.5	99	2.8	Blue

Assay Class: High Sensitivity DNA Assay  
 Data Path: C:\...ents and Settings\Bioanalyzer\2012-04-09\2012-04-09\_003.xad

Created: 4/9/2012 11:22:51 AM  
 Modified: 4/10/2012 5:17:27 PM

**Electropherogram Summary Continued ...**



**Overall Results for sample 3 : Art\_170\_PCRfree**

Number of peaks found: 3                      Corr. Area 1: 1,530.4  
 Noise: 0.2

**Peak table for sample 3 : Art\_170\_PCRfree**

Peak	Size [bp]	Conc. [pg/μl]	Molarity [pmol/l]	Observations
1	35	125.00	5,411.3	Lower Marker
2	318	1,112.40	5,293.6	
3	360	1,830.04	7,708.7	
4	408	321.64	1,193.0	
5	10,380	75.00	10.9	Upper Marker

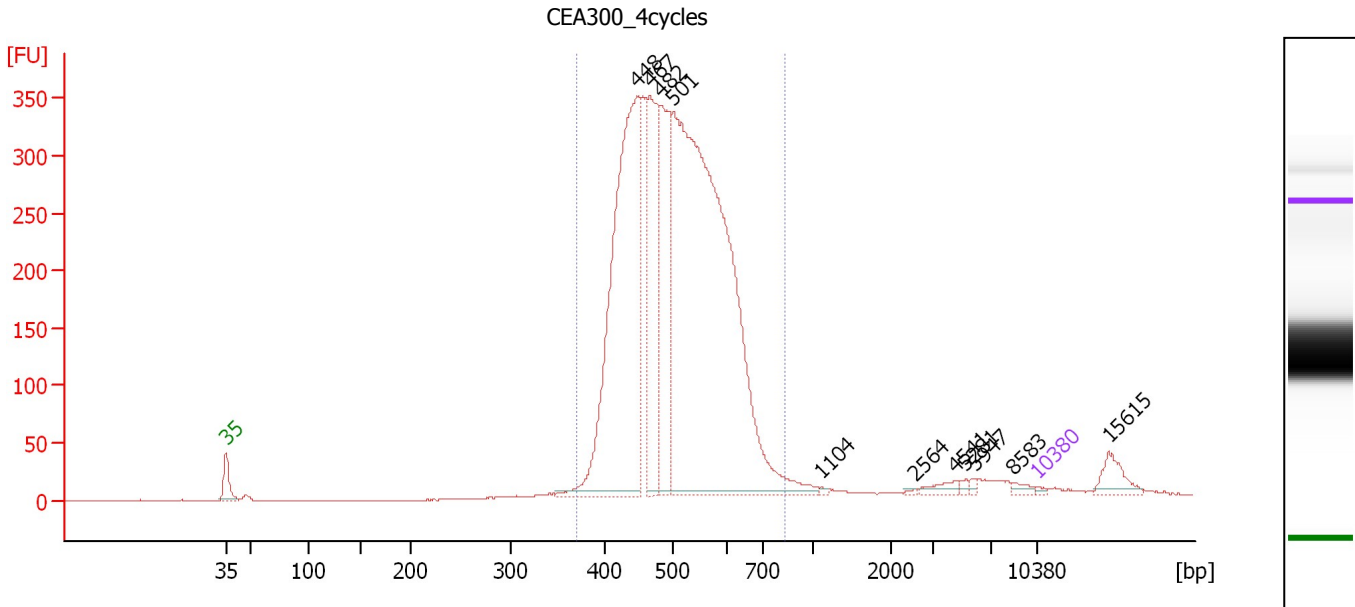
**Region table for sample 3 : Art\_170\_PCRfree**

From [bp]	Molarity [pmol/l]	Average Size [bp]	Conc. [pg/μl]	To [bp]	Corr. Area	% of Total	Size distribution in CV [%]	Color
268	13,980.5	354	3,241.38	482	1,530.4	99	9.5	Blue

Assay Class: High Sensitivity DNA Assay  
 Data Path: C:\...ents and Settings\Bioanalyzer\2012-04-09\2012-04-09\_003.xad

Created: 4/9/2012 11:22:51 AM  
 Modified: 4/10/2012 5:17:27 PM

**Electropherogram Summary Continued ...**



**Overall Results for sample 4 : CEA300\_4cycles**

Number of peaks found: 11                      Corr. Area 1: 4,574.0  
 Noise: 0.2

**Peak table for sample 4 : CEA300\_4cycles**

Peak	Size [bp]	Conc. [pg/μl]	Molarity [pmol/l]	Observations
1	35	125.00	5,411.3	Lower Marker
2	448	23,637.07	79,998.4	
3	467	9,211.23	29,897.3	
4	482	8,172.74	25,693.1	
5	501	44,557.56	134,663.1	
6	1,104	88.62	121.7	
7	2,564	77.12	45.6	
8	4,541	438.45	146.3	
9	5,281	146.68	42.1	
10	5,947	128.97	32.9	
11	8,583	240.21	42.4	
12	10,380	75.00	10.9	Upper Marker
13	15,615	0.00	0.0	

**Region table for sample 4 : CEA300\_4cycles**

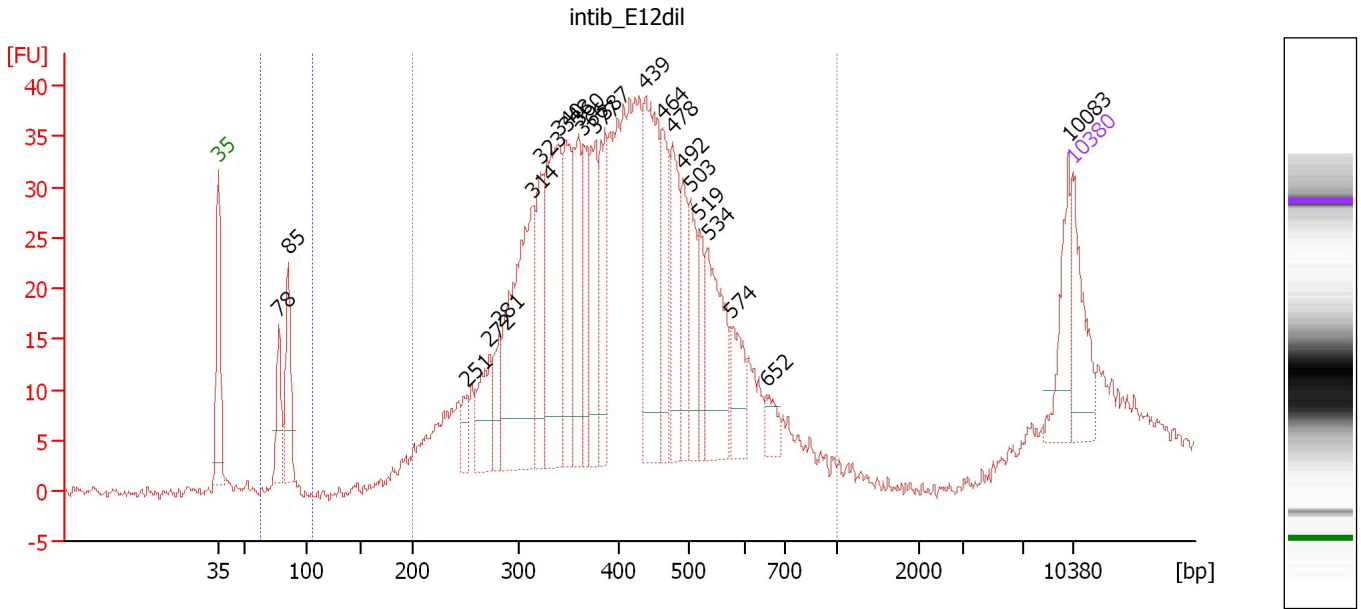
From [bp]	Molarity [pmol/l]	Average Size [bp]	Conc. [pg/μl]	To [bp]	Corr. Area	% of Total	Size distribution in CV [%]	Color
370	264,326.0	510	86,744.48	836	4,574.0	94	14.7	Blue



Assay Class: High Sensitivity DNA Assay  
 Data Path: C:\...ents and Settings\Bioanalyzer\2012-04-09\2012-04-09\_003.xad

Created: 4/9/2012 11:22:51 AM  
 Modified: 4/10/2012 5:17:27 PM

**Electropherogram Summary Continued ...**



**Overall Results for sample 5 : intib\_E12dil**

Number of peaks found: 23                      Corr. Area 1: 842.2  
 Noise: 0.6    Corr. Area 2: 37.5

**Peak table for sample 5 : intib\_E12dil**

Peak	Size [bp]	Conc. [pg/μl]	Molarity [pmol/l]	Observations
1	35	125.00	5,411.3	Lower Marker
2	78	89.96	1,757.4	
3	85	133.09	2,363.0	
4	251	35.10	212.0	
5	272	96.90	539.5	
6	281	58.16	313.4	
7	314	375.86	1,814.2	
8	323	128.89	605.5	
9	340	296.31	1,319.4	
10	348	153.49	667.7	
11	360	133.17	560.2	
12	366	105.75	438.3	
13	377	133.75	537.0	
14	387	132.95	520.4	
15	439	271.09	936.6	
16	464	123.42	403.4	
17	478	138.08	437.8	
18	492	77.09	237.3	
19	503	100.35	302.5	
20	519	60.24	175.7	
21	534	160.34	454.8	
22	574	69.65	183.8	
23	652	28.76	66.9	
24	10,083	73.16	11.0	
25	10,380	75.00	10.9	Upper Marker



Assay Class: High Sensitivity DNA Assay  
Data Path: C:\...ents and Settings\Bioanalyzer\2012-04-09\2012-04-09\_003.xad

Created: 4/9/2012 11:22:51 AM  
Modified: 4/10/2012 5:17:27 PM

**Electropherogram Summary Continued ...**

... Region table for sample 5 :

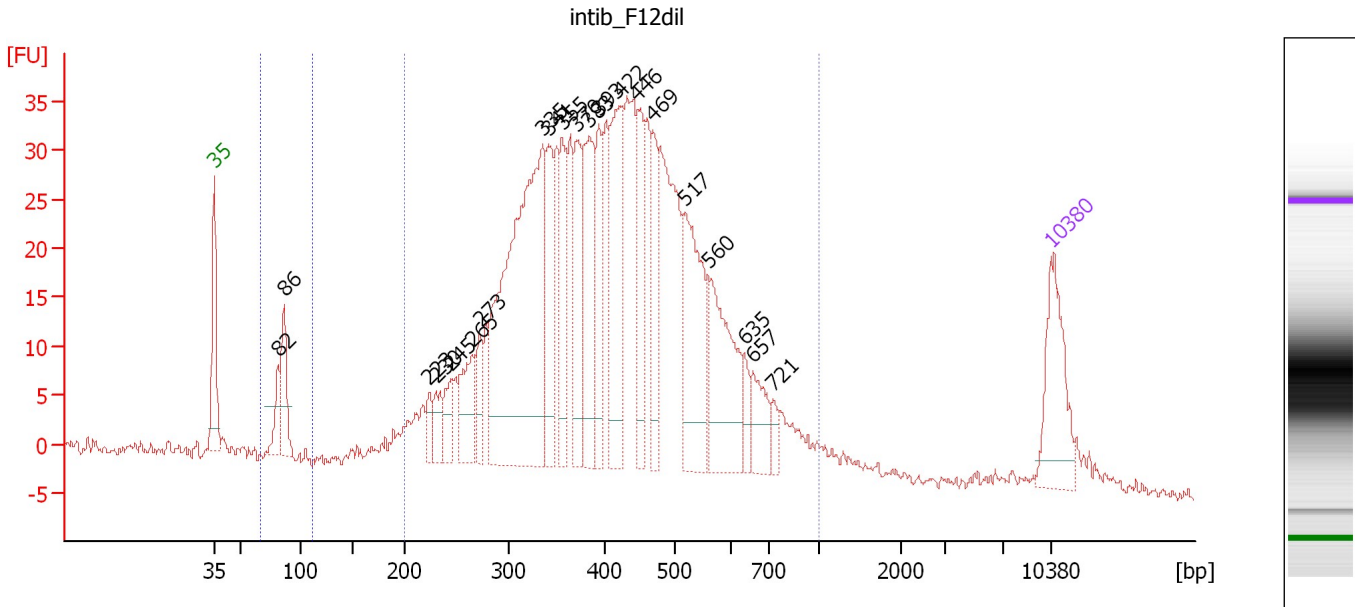
**intib\_E12dil**

<b>From [bp]</b>	<b>Molarity [pmol/l]</b>	<b>Average Size [bp]</b>	<b>Conc. [pg/μl]</b>	<b>To [bp]</b>	<b>Corr. Area</b>	<b>% of Total</b>	<b>Size distribution in CV [%]</b>	<b>Color</b>
62	4,053.7	82	219.88	106	37.5	4	4.9	
200	14,196.9	409	3,517.28	1,000	842.2	91	24.4	

Assay Class: High Sensitivity DNA Assay  
 Data Path: C:\...ents and Settings\Bioanalyzer\2012-04-09\2012-04-09\_003.xad

Created: 4/9/2012 11:22:51 AM  
 Modified: 4/10/2012 5:17:27 PM

**Electropherogram Summary Continued ...**



**Overall Results for sample 6 : intib\_F12dil**

Number of peaks found: 21                      Corr. Area 1: 940.3  
 Noise: 0.7    Corr. Area 2: 26.7

**Peak table for sample 6 : intib\_F12dil**

Peak	Size [bp]	Conc. [pg/μl]	Molarity [pmol/l]	Observations
1	35	125.00	5,411.3	Lower Marker
2	82	36.70	681.0	
3	86	70.47	1,234.4	
4	223	21.02	142.7	
5	230	32.33	213.1	
6	245	33.57	207.8	
7	265	73.44	420.0	
8	273	36.50	202.8	
9	335	503.24	2,274.9	
10	341	99.28	440.8	
11	355	91.35	390.0	
12	370	100.33	410.5	
13	383	126.87	501.3	
14	393	81.02	312.1	
15	422	142.83	512.4	
16	446	82.00	278.4	
17	469	69.80	225.6	
18	517	158.18	464.0	
19	560	142.50	385.4	
20	635	20.74	49.5	
21	657	44.21	102.0	
22	721	14.14	29.7	
23	10,380	75.00	10.9	Upper Marker



Assay Class: High Sensitivity DNA Assay  
Data Path: C:\...ents and Settings\Bioanalyzer\2012-04-09\2012-04-09\_003.xad

Created: 4/9/2012 11:22:51 AM  
Modified: 4/10/2012 5:17:27 PM

**Electropherogram Summary Continued ...**

... Region table for sample 6 :

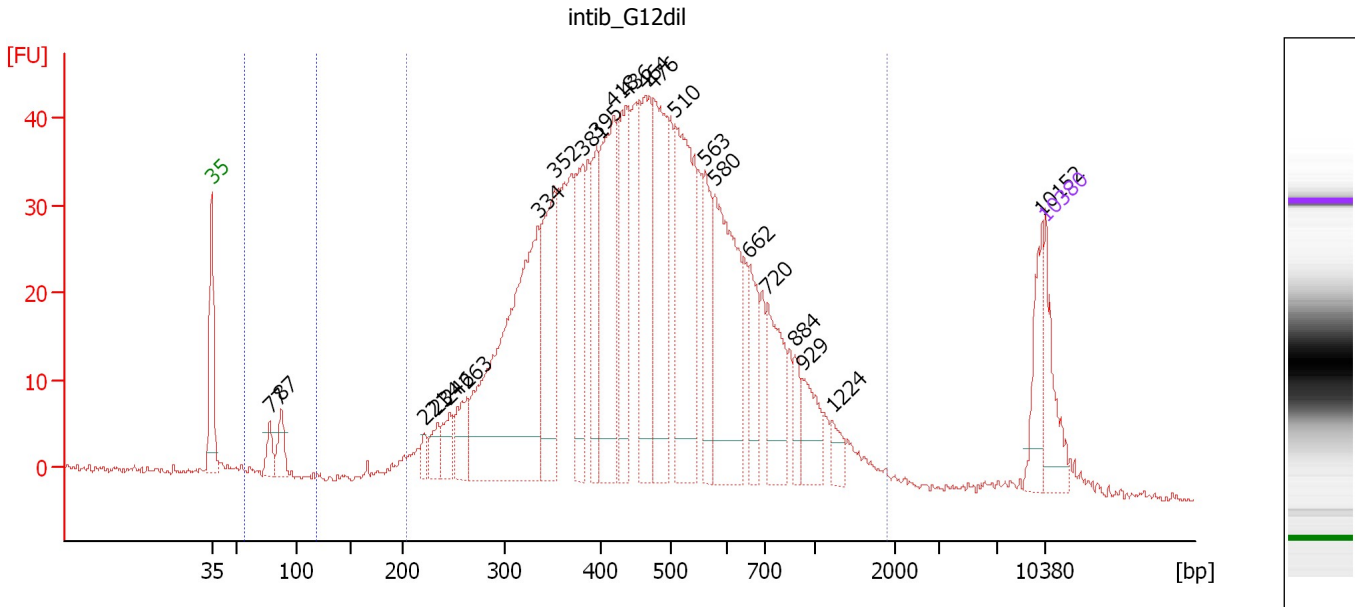
intib\_F12dil

From [bp]	Molarity [pmol/l]	Average Size [bp]	Conc. [pg/μl]	To [bp]	Corr. Area	% of Total	Size distribution in CV [%]	Color
66	1,940.5	85	108.18	112	26.7	3	5.0	
200	10,772.4	426	2,705.62	1,000	940.3	93	29.2	

Assay Class: High Sensitivity DNA Assay  
 Data Path: C:\...ents and Settings\Bioanalyzer\2012-04-09\2012-04-09\_003.xad

Created: 4/9/2012 11:22:51 AM  
 Modified: 4/10/2012 5:17:27 PM

**Electropherogram Summary Continued ...**



**Overall Results for sample 7 : intib\_G12dil**

Number of peaks found: 23                      Corr. Area 1: 1,194.6  
 Noise: 0.4    Corr. Area 2: 17.0

**Peak table for sample 7 : intib\_G12dil**

Peak	Size [bp]	Conc. [pg/μl]	Molarity [pmol/l]	Observations
1	35	125.00	5,411.3	Lower Marker
2	77	41.36	813.7	
3	87	56.24	982.3	
4	221	23.34	159.7	
5	234	42.74	276.2	
6	246	53.00	325.9	
7	263	76.77	441.5	
8	334	655.64	2,969.9	
9	352	252.16	1,086.7	
10	381	172.98	688.3	
11	395	140.50	538.8	
12	418	292.52	1,060.4	
13	436	191.20	664.7	
14	464	222.28	726.2	
15	476	261.36	831.6	
16	510	350.67	1,042.2	
17	563	119.48	321.5	
18	580	311.80	814.1	
19	662	95.36	218.4	
20	720	131.36	276.3	
21	884	36.59	62.7	
22	929	65.39	106.6	
23	1,224	26.57	32.9	
24	10,152	61.71	9.2	
25	10,380	75.00	10.9	Upper Marker



Assay Class: High Sensitivity DNA Assay  
Data Path: C:\...ents and Settings\Bioanalyzer\2012-04-09\2012-04-09\_003.xad

Created: 4/9/2012 11:22:51 AM  
Modified: 4/10/2012 5:17:27 PM

**Electropherogram Summary Continued ...**

... Region table for sample 7 :

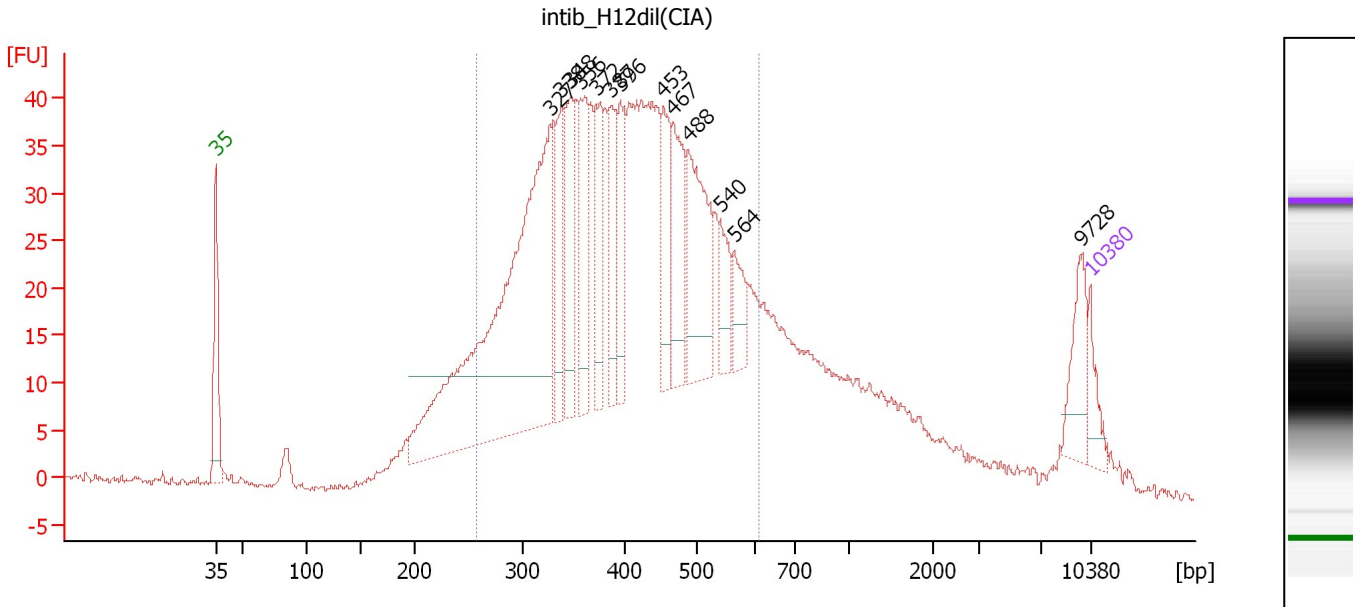
intib\_G12dil

From [bp]	Molarity [pmol/l]	Average Size [bp]	Conc. [pg/μl]	To [bp]	Corr. Area	% of Total	Size distribution in CV [%]	Color
57	1,756.0	82	94.73	118	17.0	1	7.9	
204	16,393.4	507	4,582.80	1,905	1,194.6	95	44.0	

Assay Class: High Sensitivity DNA Assay  
 Data Path: C:\...ents and Settings\Bioanalyzer\2012-04-09\2012-04-09\_003.xad

Created: 4/9/2012 11:22:51 AM  
 Modified: 4/10/2012 5:17:27 PM

**Electropherogram Summary Continued ...**



**Overall Results for sample 8 : intib\_H12dil(CIA)**

Number of peaks found: 13      Corr. Area 1: 1,023.6  
 Noise: 0.3

**Peak table for sample 8 : intib\_H12dil(CIA)**

Peak	Size [bp]	Conc. [pg/μl]	Molarity [pmol/l]	Observations
1	35	125.00	5,411.3	Lower Marker
2	327	2,095.66	9,724.3	
3	338	302.89	1,359.5	
4	348	288.63	1,258.3	
5	356	332.24	1,412.1	
6	372	276.98	1,127.4	
7	387	262.35	1,027.3	
8	396	225.76	864.0	
9	453	251.77	841.4	
10	467	307.81	999.4	
11	488	476.83	1,480.2	
12	540	137.32	385.4	
13	564	125.01	336.1	
14	9,728	150.96	23.5	
15	10,380	75.00	10.9	Upper Marker

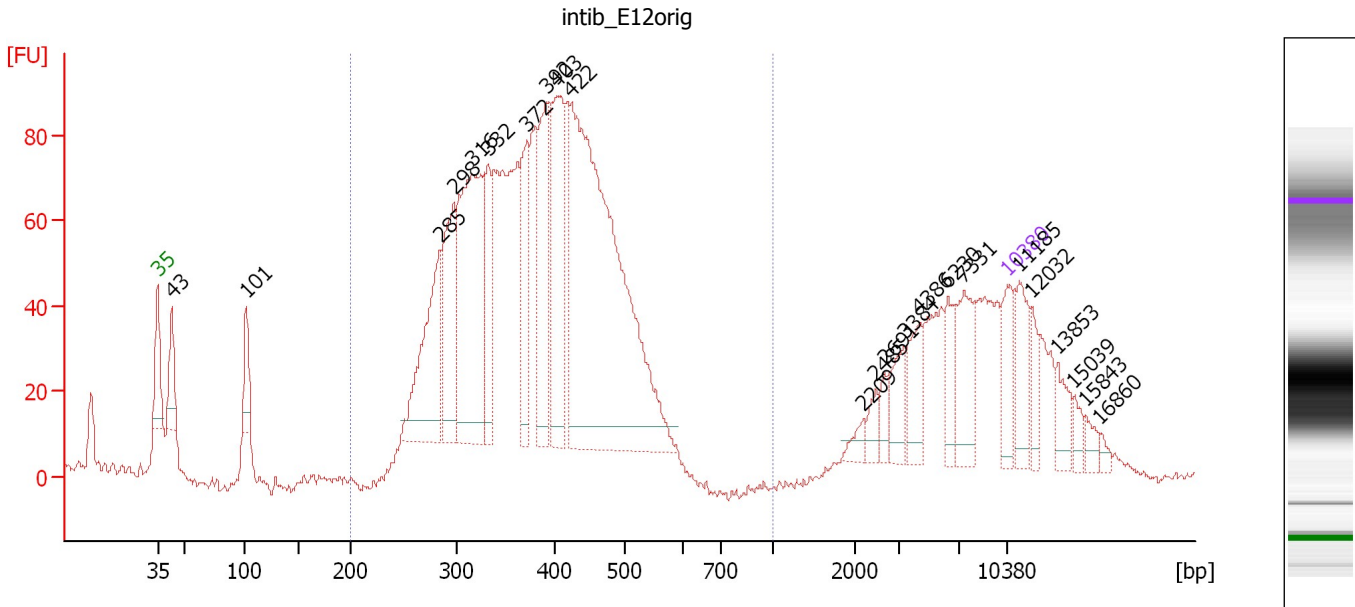
**Region table for sample 8 : intib\_H12dil(CIA)**

From [bp]	Molarity [pmol/l]	Average Size [bp]	Conc. [pg/μl]	To [bp]	Corr. Area	% of Total	Size distribution in CV [%]	Color
257	33,875.2	409	8,548.30	609	1,023.6	73	21.4	Blue

Assay Class: High Sensitivity DNA Assay  
 Data Path: C:\...ents and Settings\Bioanalyzer\2012-04-09\2012-04-09\_003.xad

Created: 4/9/2012 11:22:51 AM  
 Modified: 4/10/2012 5:17:27 PM

**Electropherogram Summary Continued ...**



**Overall Results for sample 9 : intib\_E12orig**

Number of peaks found: 23                      Corr. Area 1: 1,408.7  
 Noise: 1.4

**Peak table for sample 9 : intib\_E12orig**

Peak	Size [bp]	Conc. [pg/μl]	Molarity [pmol/l]	Observations
1	35	125.00	5,411.3	Lower Marker
2	43	108.22	3,812.6	
3	101	89.46	1,343.8	
4	285	325.19	1,726.1	
5	298	248.90	1,267.3	
6	316	563.49	2,703.2	
7	332	160.87	733.2	
8	372	172.07	701.3	
9	392	250.37	967.7	
10	403	298.71	1,121.8	
11	422	1,210.14	4,349.1	
12	2,209	22.40	15.4	
13	2,485	29.14	17.8	
14	2,691	25.45	14.3	
15	3,384	62.51	28.0	
16	4,386	79.19	27.4	
17	6,230	62.40	15.2	
18	7,331	109.70	22.7	
19	10,380	75.00	10.9	Upper Marker
20	11,185	0.00	0.0	
21	12,032	0.00	0.0	
22	13,853	0.00	0.0	
23	15,039	0.00	0.0	
24	15,843	0.00	0.0	
25	16,860	0.00	0.0	



Assay Class: High Sensitivity DNA Assay  
Data Path: C:\...ents and Settings\Bioanalyzer\2012-04-09\2012-04-09\_003.xad

Created: 4/9/2012 11:22:51 AM  
Modified: 4/10/2012 5:17:27 PM

**Electropherogram Summary Continued ...**

... Region table for sample 9 :

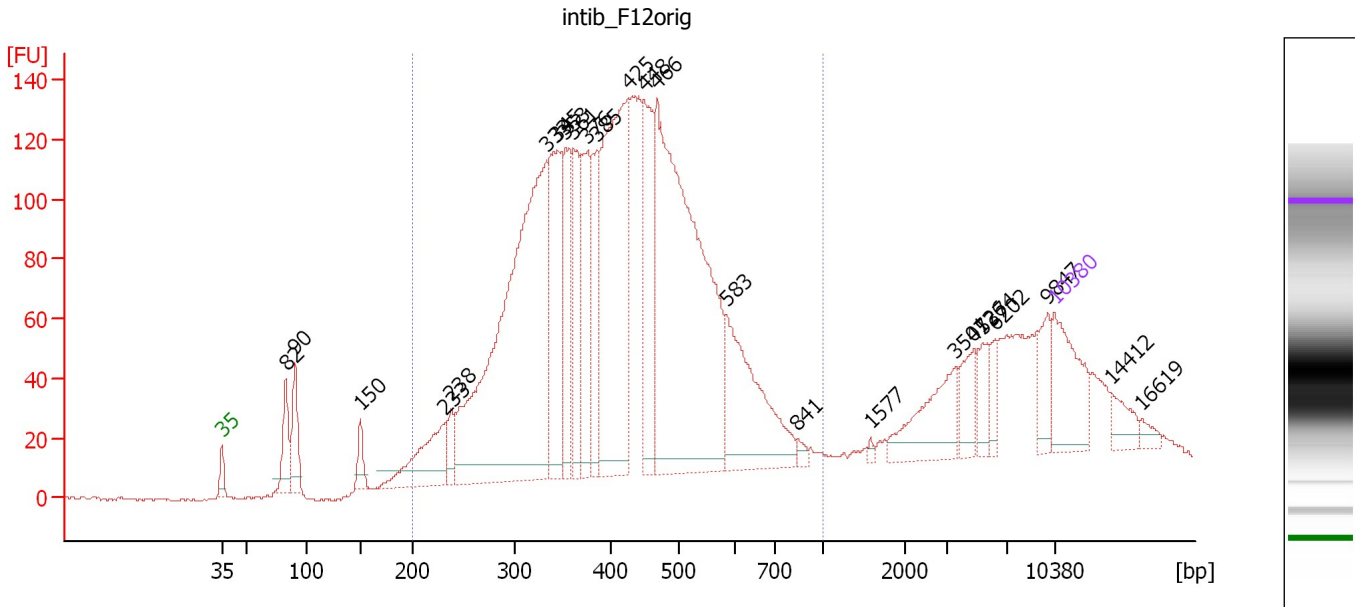
intib\_E12orig

From [bp]	Molarity [pmol/l]	Average Size [bp]	Conc. [pg/μl]	To [bp]	Corr. Area	% of Total	Size distribution in CV [%]	Color
200	17,026.5	387	4,149.20	1,000	1,408.7	73	18.5	■

Assay Class: High Sensitivity DNA Assay  
 Data Path: C:\...ents and Settings\Bioanalyzer\2012-04-09\2012-04-09\_003.xad

Created: 4/9/2012 11:22:51 AM  
 Modified: 4/10/2012 5:17:27 PM

**Electropherogram Summary Continued ...**



**Overall Results for sample 10 : intib\_F12orig**

Number of peaks found: 24                      Corr. Area 1: 3,041.6  
 Noise: 0.6

**Peak table for sample 10 : intib\_F12orig**


Peak	Size [bp]	Conc. [pg/μl]	Molarity [pmol/l]	Observations
1	35	125.00	5,411.3	Lower Marker
2	82	68.30	1,263.3	
3	90	72.14	1,216.1	
4	150	30.85	311.0	
5	233	117.11	761.4	
6	238	29.34	186.6	
7	333	745.21	3,390.2	
8	345	203.49	894.6	
9	353	119.29	512.1	
10	361	108.90	456.8	
11	376	139.51	562.9	
12	385	102.53	403.0	
13	425	391.15	1,395.9	
14	448	158.97	537.8	
15	466	665.71	2,162.3	
16	583	187.49	487.4	
17	841	7.47	13.5	
18	1,577	3.27	3.1	
19	3,501	79.31	34.3	
20	4,726	33.73	10.8	
21	5,374	30.04	8.5	
22	6,202	16.17	3.9	
23	9,847	32.44	5.0	
24	10,380	75.00	10.9	Upper Marker
25	14,412	0.00	0.0	
26	16,619	0.00	0.0	

Assay Class: High Sensitivity DNA Assay  
Data Path: C:\...ents and Settings\Bioanalyzer\2012-04-09\2012-04-09\_003.xad

Created: 4/9/2012 11:22:51 AM  
Modified: 4/10/2012 5:17:27 PM

**Electropherogram Summary Continued ...**

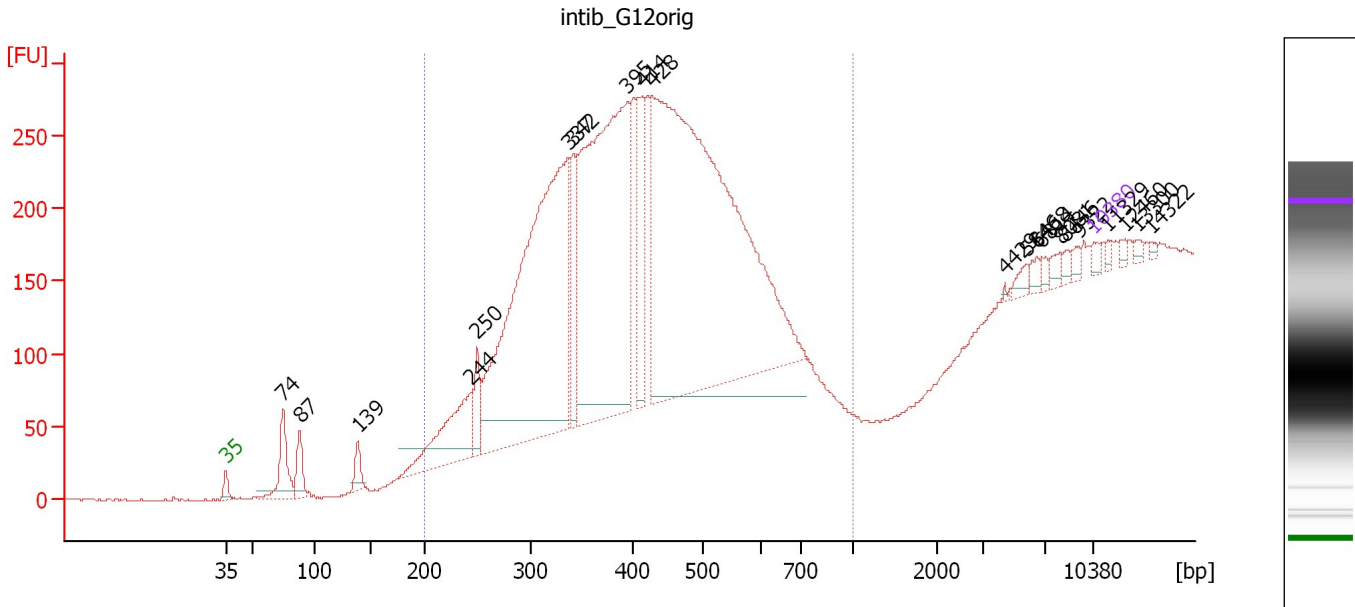
... Region table for sample 10 : intib\_F12orig

From [bp]	Molarity [pmol/l]	Average Size [bp]	Conc. [pg/ $\mu$ l]	To [bp]	Corr. Area	% of Total	Size distribution in CV [%]	Co lor
200	12,730.4	420	3,197.49	1,000	3,041.6	83	26.9	

Assay Class: High Sensitivity DNA Assay  
 Data Path: C:\...ents and Settings\Bioanalyzer\2012-04-09\2012-04-09\_003.xad

Created: 4/9/2012 11:22:51 AM  
 Modified: 4/10/2012 5:17:27 PM

**Electropherogram Summary Continued ...**



**Overall Results for sample 11 : intib\_G12orig**

Number of peaks found: 21                      Corr. Area 1: 4,310.3  
 Noise: 0.6

**Peak table for sample 11 : intib\_G12orig**


Peak	Size [bp]	Conc. [pg/μl]	Molarity [pmol/l]	Observations
1	35	125.00	5,411.3	Lower Marker
2	74	951.05	19,412.5	
3	87	532.71	9,233.9	
4	139	313.68	3,428.7	
5	244	1,689.68	10,487.3	
6	250	568.40	3,450.5	
7	337	9,402.38	42,286.2	
8	342	1,096.40	4,862.2	
9	395	7,951.77	30,492.2	
10	414	1,334.44	4,883.9	
11	428	13,906.20	49,212.9	
12	4,429	17.84	6.1	
13	5,846	117.49	30.5	
14	6,468	100.37	23.5	
15	6,814	69.59	15.5	
16	8,081	102.02	19.1	
17	8,446	80.73	14.5	
18	9,322	80.31	13.1	
19	10,380	75.00	10.9	Upper Marker
20	11,329	0.00	0.0	
21	12,460	0.00	0.0	
22	13,300	0.00	0.0	
23	14,322	0.00	0.0	

Assay Class: High Sensitivity DNA Assay  
Data Path: C:\...ents and Settings\Bioanalyzer\2012-04-09\2012-04-09\_003.xad

Created: 4/9/2012 11:22:51 AM  
Modified: 4/10/2012 5:17:27 PM

**Electropherogram Summary Continued ...**

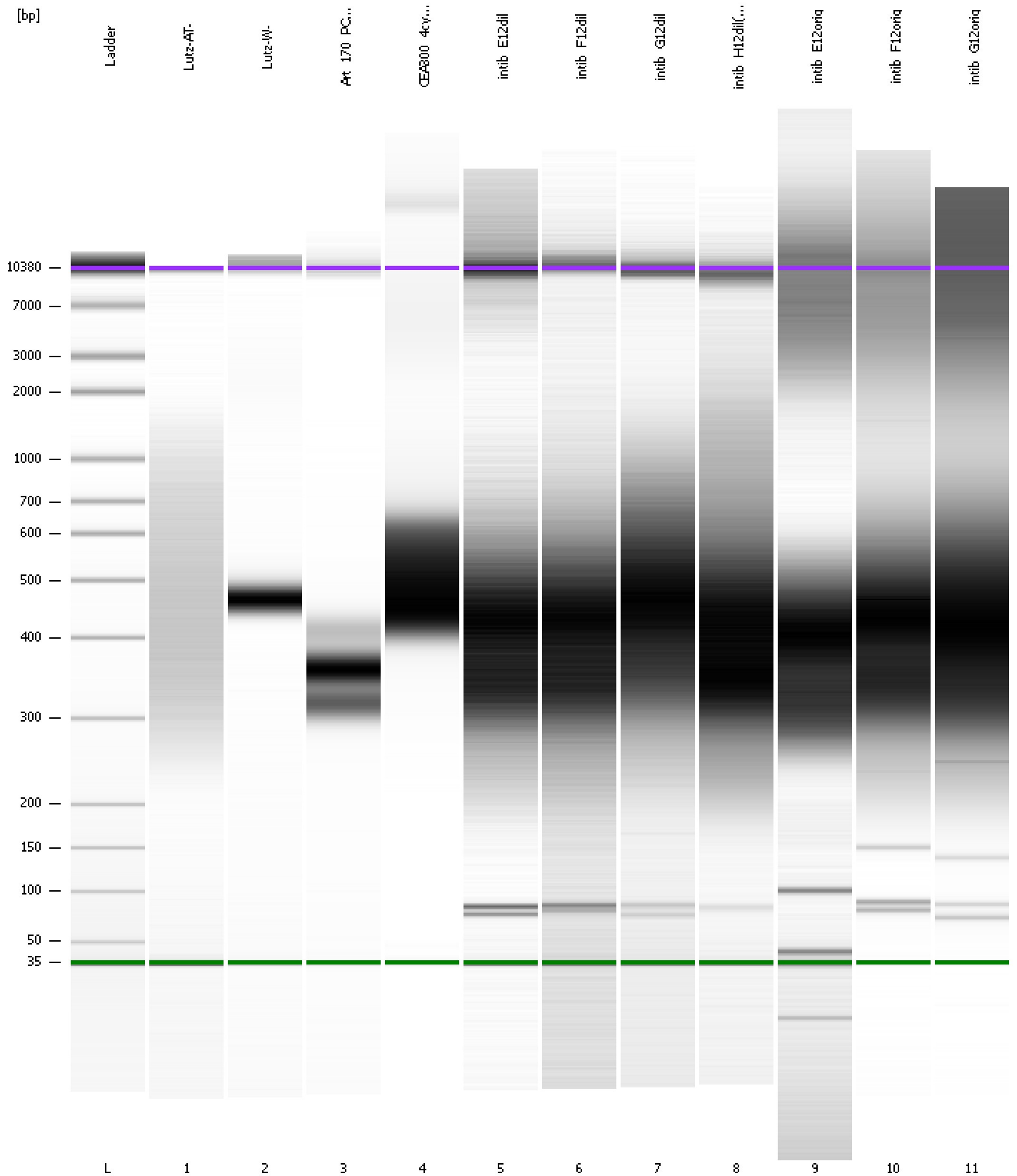
... Region table for sample 11 : intib\_G12orig

From [bp]	Molarity [pmol/l]	Average Size [bp]	Conc. [pg/μl]	To [bp]	Corr. Area	% of Total	Size distribution in CV [%]	Color
200	117,213.7	413	29,944.28	1,000	4,310.3	96	21.5	

Assay Class: High Sensitivity DNA Assay  
Data Path: C:\...ents and Settings\Bioanalyzer\2012-04-09\2012-04-09\_003.xad

Created: 4/9/2012 11:22:51 AM  
Modified: 4/10/2012 5:17:27 PM

**Gel Image**



Assay Class: High Sensitivity DNA Assay  
 Data Path: C:\...ents and Settings\Bioanalyzer\2012-04-09\2012-04-09\_003.xad

Created: 4/9/2012 11:22:51 AM  
 Modified: 4/10/2012 5:17:27 PM

**Run Logbook**

Description	Number	Source	Category	Sub Category	Time	Time Zone	User	Host
Run ended on port 1 (Number of wells acquired: 12)		Instrument	Run		4/9/2012 12:04:05 PM	(GMT --07:00) Pacific Standard Time	UC Davis	D8XSMGH1
Run started on port 1 (File: C:\Documents and Settings\Bioanalyzer\2012-04-09\2012-04-09_003.xad)		Instrument	Run		4/9/2012 11:22:52 AM	(GMT --07:00) Pacific Standard Time	UC Davis	D8XSMGH1
Product Number : G2938B		Instrument	Run		4/9/2012 11:22:52 AM	(GMT --07:00) Pacific Standard Time	UC Davis	D8XSMGH1
Name :		Instrument	Run		4/9/2012 11:22:52 AM	(GMT --07:00) Pacific Standard Time	UC Davis	D8XSMGH1
Vendor : Agilent Technologies		Instrument	Run		4/9/2012 11:22:52 AM	(GMT --07:00) Pacific Standard Time	UC Davis	D8XSMGH1
Serial# : DE13701086		Instrument	Run		4/9/2012 11:22:52 AM	(GMT --07:00) Pacific Standard Time	UC Davis	D8XSMGH1
Firmware : C.01.069		Instrument	Run		4/9/2012 11:22:52 AM	(GMT --07:00) Pacific Standard Time	UC Davis	D8XSMGH1
Cartridge : Electrode		Instrument	Run		4/9/2012 11:22:52 AM	(GMT --07:00) Pacific Standard Time	UC Davis	D8XSMGH1