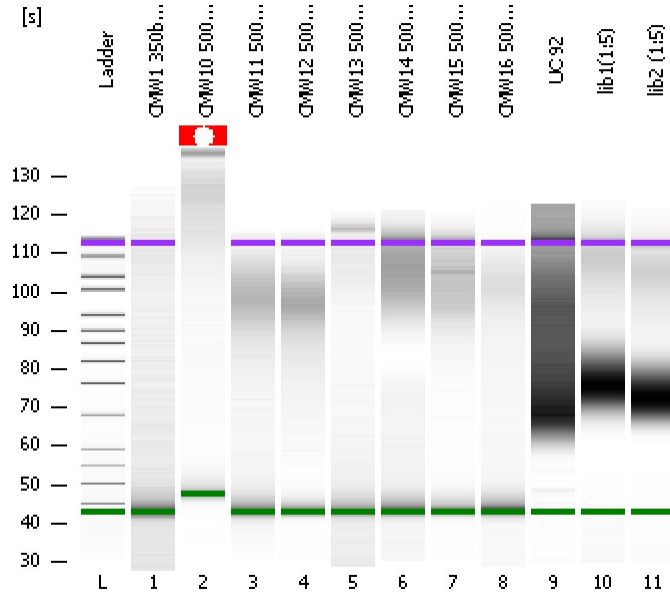


Assay Class: High Sensitivity DNA Assay
Data Path: C:\...ents and Settings\Bioanalyzer\2012-04-09\2012-04-09_006.xad

Created: 4/9/2012 2:47:01 PM
Modified: 4/9/2012 3:39:57 PM

Electrophoresis File Run Summary



Instrument Information:

Instrument Name: DE13701086 Firmware: C.01.069
Serial#: DE13701086 Type: G2938B

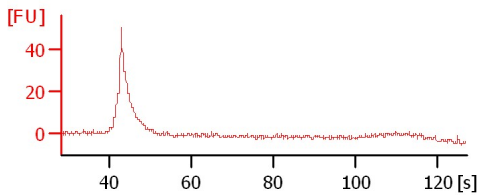
Assay Information:

Assay Origin Path: C:\Program Files\Agilent\2100 bioanalyzer\2100 expert\assays\dsDNA\High Sensitivity DNA.xsy
Assay Class: High Sensitivity DNA Assay
Version: 1.03
Assay Comments: Copyright © 2003-2010 Agilent Technologies

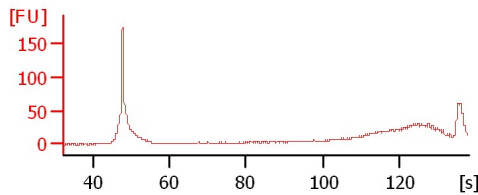
Chip Information:

Chip Lot #: Reagent Kit Lot #: Chip Comments:

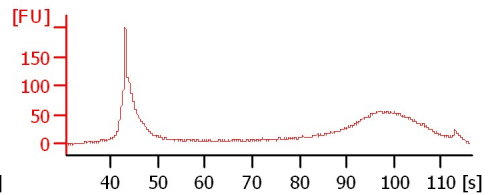
CMW1 350bp soni 1:5



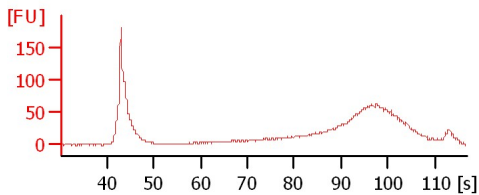
CMW10 500bp soni 1:20



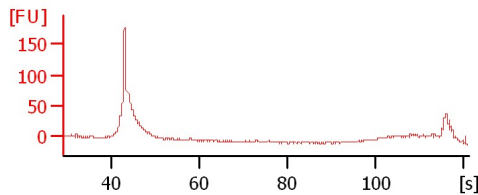
CMW11 500bp soni 1:20



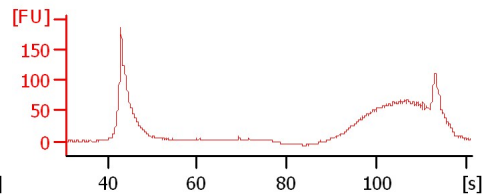
CMW12 500bp soni 1:20



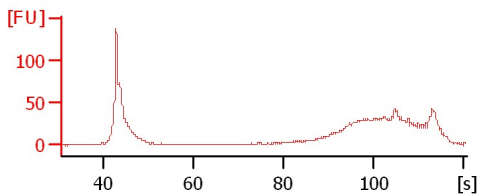
CMW13 500bp soni 1:20



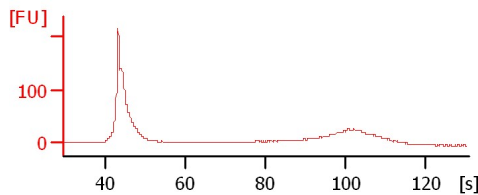
CMW14 500bp soni 1:20



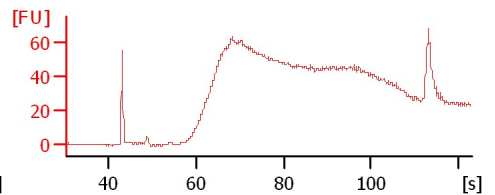
CMW15 500bp soni 1:20



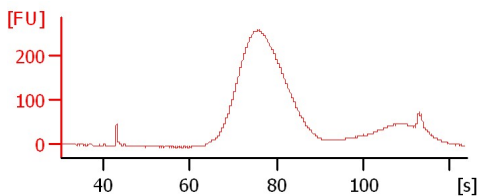
CMW16 500bp soni 1:20



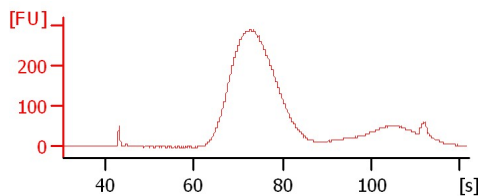
UC 92



lib1(1:5)



lib2 (1:5)



Assay Class: High Sensitivity DNA Assay
Data Path: C:\...ents and Settings\Bioanalyzer\2012-04-09\2012-04-09_006.xad

Created: 4/9/2012 2:47:01 PM
Modified: 4/9/2012 3:39:57 PM

Electrophoresis File Run Summary (Chip Summary)

Sample Name	Sample Comment	Rest. Digest	Status	Observation	Result Label	Result Color
CMW1 350bp soni 1:5		<input type="checkbox"/>	✓			
CMW10 500bp soni 1:20		<input type="checkbox"/>	✓			
CMW11 500bp soni 1:20		<input type="checkbox"/>	✓			
CMW12 500bp soni 1:20		<input type="checkbox"/>	✓			
CMW13 500bp soni 1:20		<input type="checkbox"/>	✓			
CMW14 500bp soni 1:20		<input type="checkbox"/>	✓			
CMW15 500bp soni 1:20		<input type="checkbox"/>	✓			
CMW16 500bp soni 1:20		<input type="checkbox"/>	✓			
UC 92		<input type="checkbox"/>	✓			
lib1(1:5)		<input type="checkbox"/>	✓			
lib2 (1:5)		<input type="checkbox"/>	✓			
Ladder		<input type="checkbox"/>	✓			

Chip Lot #

Reagent Kit Lot #

Chip Comments :

Assay Class: High Sensitivity DNA Assay
 Data Path: C:\...ents and Settings\Bioanalyzer\2012-04-09\2012-04-09_006.xad

Created: 4/9/2012 2:47:01 PM
 Modified: 4/9/2012 3:39:57 PM

Electrophoresis Assay Details

General Analysis Settings

Number of Available Sample and Ladder Wells (Max.) : 12
 Minimum Visible Range [s] : 32
 Maximum Visible Range [s] : 138
 Start Analysis Time Range [s] : 33
 End Analysis Time Range [s] : 137.5
 Ladder Concentration [pg/μl] : 1950
 Uses Standard Area for Ladder Fragments
 Lower Marker Concentration [pg/μl] : 125
 Upper Marker Concentration [pg/μl] : 75
 Used Upper Marker for Quantitation
 Standard Curve Fit is Point to Point
 Show Data Aligned to Lower and Upper Marker

Integrator Settings

Integration Start Time [s] : 33.05
 Integration End Time [s] : 137
 Slope Threshold : 0.8
 Height Threshold [FU] : 5
 Area Threshold : 0.1
 Width Threshold [s] : 0.6
 Baseline Plateau [s] : 0.5

Filter Settings

Filter Width [s] : 0.5
 Polynomial Order : 4

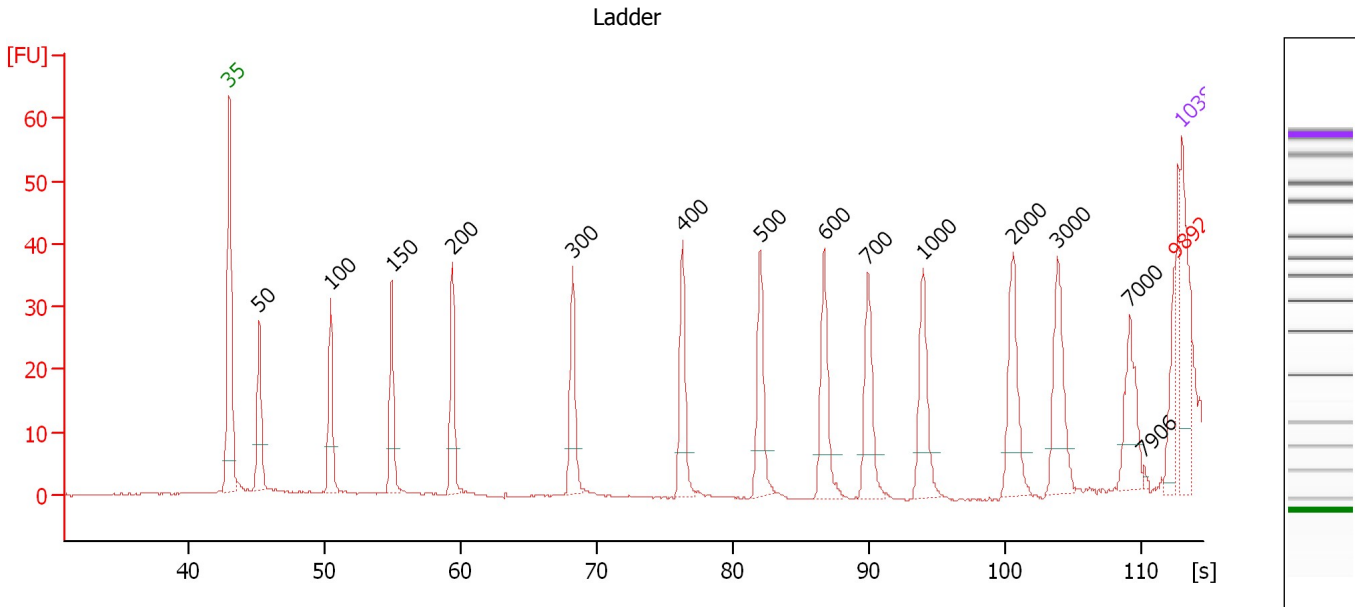
Ladder

Ladder Peak	Size	Area
1	35	160
2	50	210
3	100	208
4	150	221
5	200	242
6	300	270
7	400	305
8	500	306
9	600	336
10	700	321
11	1000	366
12	2000	413
13	3000	411
14	7000	400
15	10380	214

Assay Class: High Sensitivity DNA Assay
 Data Path: C:\...ents and Settings\Bioanalyzer\2012-04-09\2012-04-09_006.xad

Created: 4/9/2012 2:47:01 PM
 Modified: 4/9/2012 3:39:57 PM

Electropherogram Summary



Overall Results for Ladder

Noise: 0.2

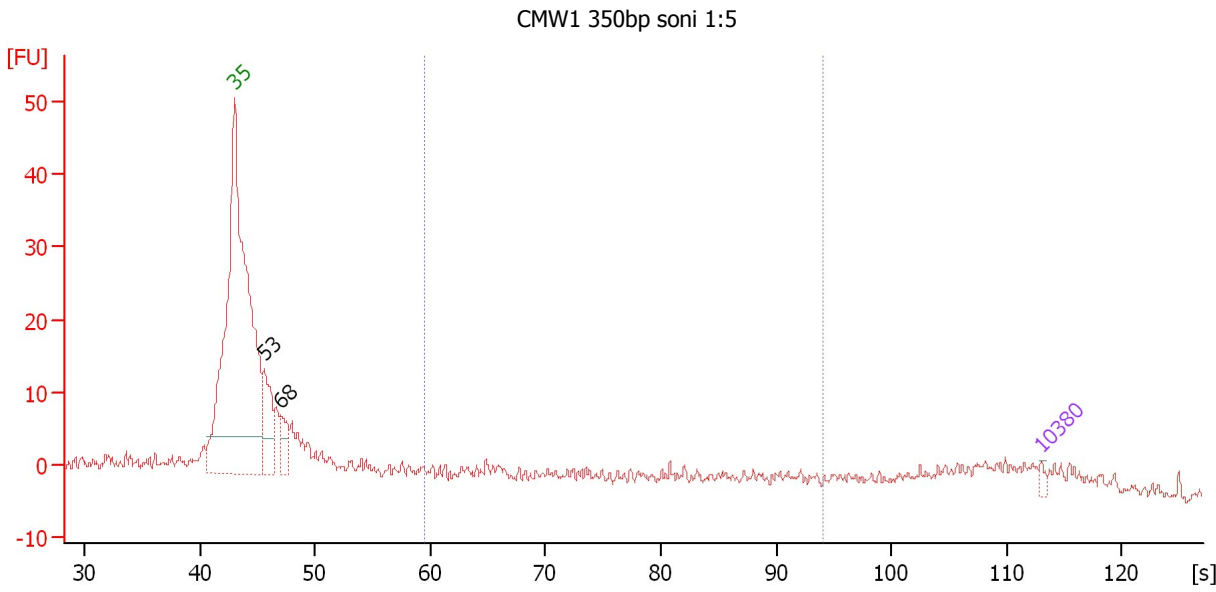
Peak table for Ladder

Peak	Size [bp]	Conc. [pg/μl]	Molarity [pmol/l]	Observations
1	35	125.00	5,411.3	Lower Marker
2	50	150.00	4,545.5	Ladder Peak
3	100	150.00	2,272.7	Ladder Peak
4	150	150.00	1,515.2	Ladder Peak
5	200	150.00	1,136.4	Ladder Peak
6	300	150.00	757.6	Ladder Peak
7	400	150.00	568.2	Ladder Peak
8	500	150.00	454.5	Ladder Peak
9	600	150.00	378.8	Ladder Peak
10	700	150.00	324.7	Ladder Peak
11	1,000	150.00	227.3	Ladder Peak
12	2,000	150.00	113.6	Ladder Peak
13	3,000	150.00	75.8	Ladder Peak
14	7,000	150.00	32.5	Ladder Peak
15	7,906	0.00	0.0	
16	9,892	0.00	0.0	excluded peak
17	10,380	75.00	10.9	Upper Marker

Assay Class: High Sensitivity DNA Assay
 Data Path: C:\...ents and Settings\Bioanalyzer\2012-04-09\2012-04-09_006.xad

Created: 4/9/2012 2:47:01 PM
 Modified: 4/9/2012 3:39:57 PM

Electropherogram Summary Continued ...



Overall Results for sample 1 : CMW1 350bp soni 1:5

Number of peaks found: 2 Corr. Area 1: 19.2
 Noise: 1.0

Peak table for sample 1 : CMW1 350bp soni 1:5

Peak	Size [bp]	Conc. [pg/μl]	Molarity [pmol/l]	Observations
1	35	125.00	5,411.3	Lower Marker
2	53	1,537.99	43,664.2	
3	68	705.73	15,823.3	
4	10,380	75.00	10.9	Upper Marker

Region table for sample 1 : CMW1 350bp soni 1:5

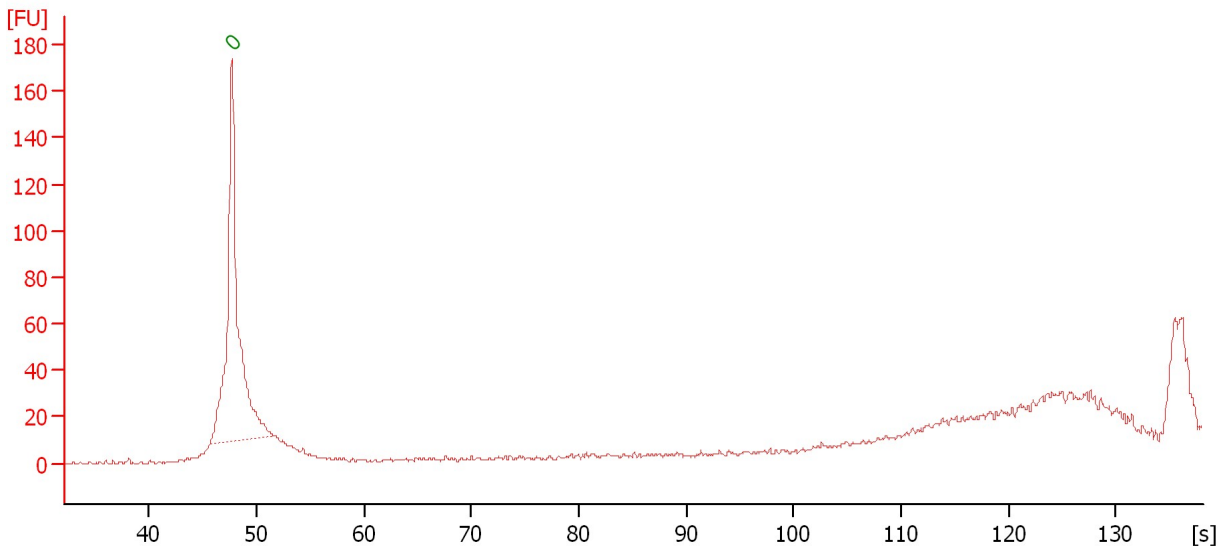
From [bp]	Molarity [pmol/l]	Average Size [bp]	Conc. [pg/μl]	To [bp]	Corr. Area	% of Total	Size distribution in CV [%]	Color
200	3,278.4	507	839.44	1,000	19.2	13	41.2	Blue

Assay Class: High Sensitivity DNA Assay
Data Path: C:\...ents and Settings\Bioanalyzer\2012-04-09\2012-04-09_006.xad

Created: 4/9/2012 2:47:01 PM
Modified: 4/9/2012 3:39:57 PM

Electropherogram Summary Continued ...

CMW10 500bp soni 1:20



Setpoint Deviations for sample 2 : CMW10 500bp soni 1:20

Height Threshold [FU] : 40

Overall Results for sample 2 : CMW10 500bp soni 1:20

Number of peaks found: 0 Noise: 0.7

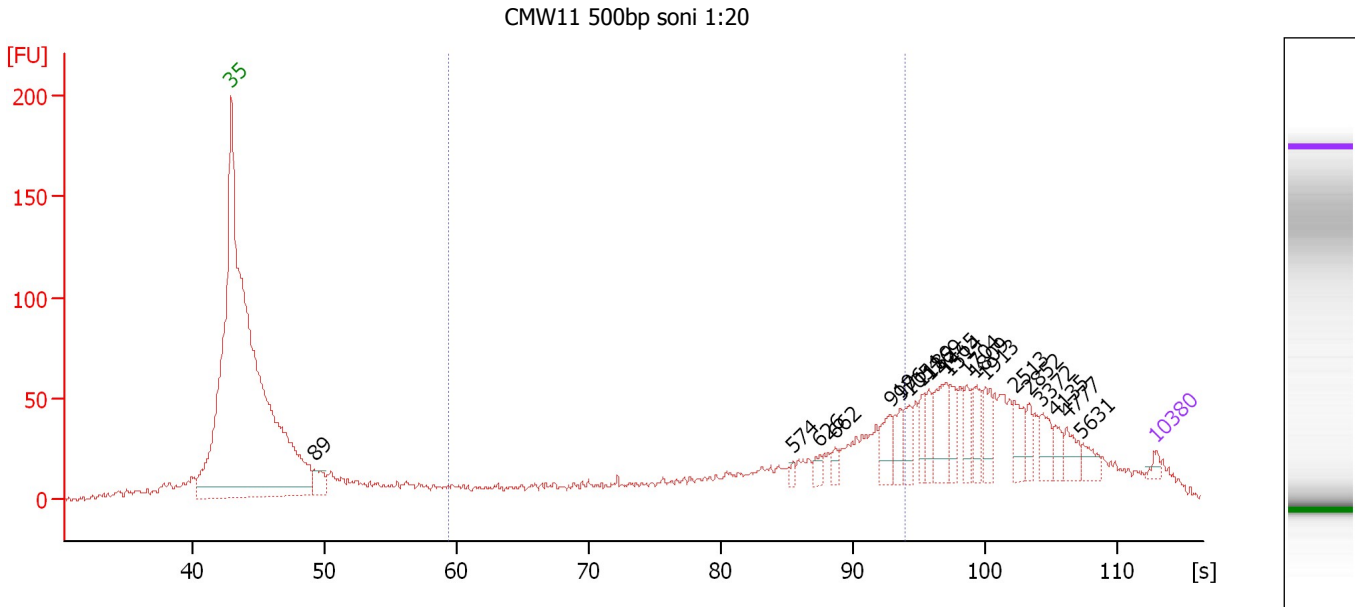
Peak table for sample 2 : CMW10 500bp soni 1:20

Peak	Size [bp]	Conc. [pg/μl]	Molarity [pmol/l]	Observations
1	0	0.00	0.0	Lower Marker

Assay Class: High Sensitivity DNA Assay
 Data Path: C:\...ents and Settings\Bioanalyzer\2012-04-09\2012-04-09_006.xad

Created: 4/9/2012 2:47:01 PM
 Modified: 4/9/2012 3:39:57 PM

Electropherogram Summary Continued ...



Setpoint Deviations for sample 3 : CMW11 500bp soni 1:20

Height Threshold [FU] : 12

Overall Results for sample 3 : CMW11 500bp soni 1:20

Number of peaks found: 20 Corr. Area 1: 518.3
 Noise: 1.7

Peak table for sample 3 : CMW11 500bp soni 1:20

Peak	Size [bp]	Conc. [pg/μl]	Molarity [pmol/l]	Observations
1	35	125.00	5,411.3	Lower Marker
2	89	494.08	8,450.1	
3	574	80.68	212.8	
4	626	144.30	349.2	
5	662	123.79	283.5	
6	919	385.94	636.6	
7	976	282.23	438.3	
8	1,054	295.24	424.2	
9	1,189	249.61	318.0	
10	1,269	277.49	331.3	
11	1,465	603.49	624.0	
12	1,514	259.01	259.2	
13	1,704	246.39	219.0	
14	1,809	277.84	232.8	
15	1,913	330.97	262.2	
16	2,513	354.30	213.7	
17	2,852	188.66	100.2	
18	3,372	285.96	128.5	
19	4,135	192.39	70.5	
20	4,777	255.75	81.1	
21	5,631	201.81	54.3	
22	10,380	75.00	10.9	Upper Marker

Assay Class: High Sensitivity DNA Assay
Data Path: C:\...ents and Settings\Bioanalyzer\2012-04-09\2012-04-09_006.xad

Created: 4/9/2012 2:47:01 PM
Modified: 4/9/2012 3:39:57 PM

Electropherogram Summary Continued ...

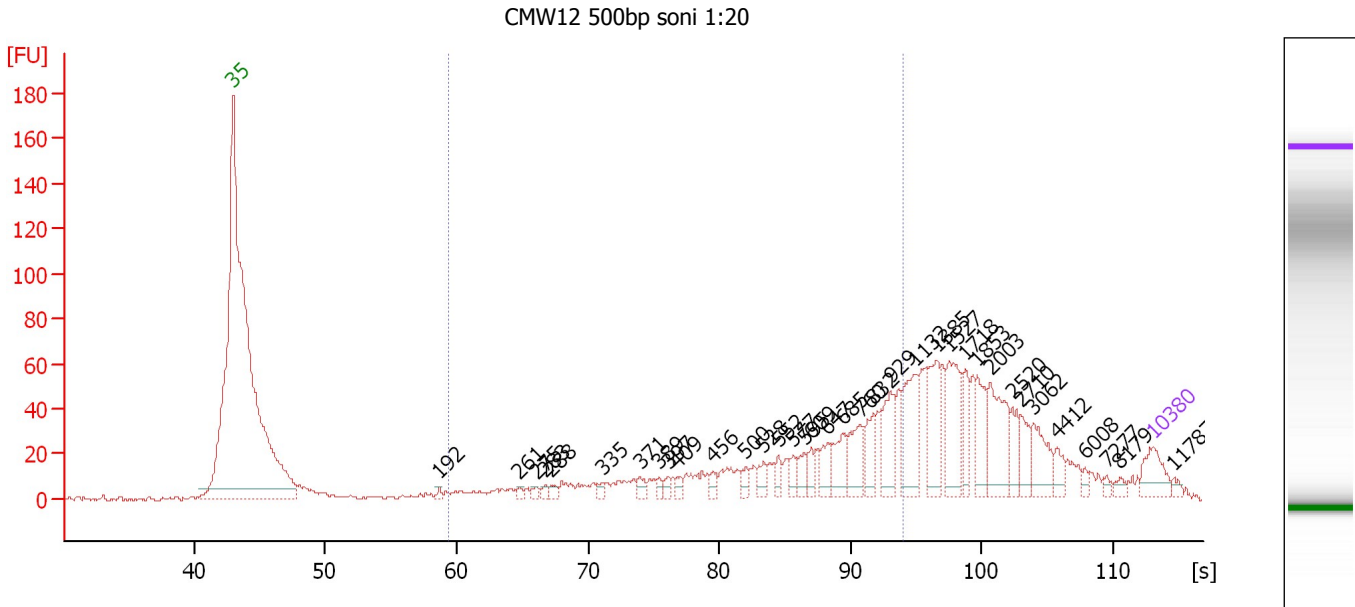
... Region table for sample 3 : CMW11 500bp soni 1:20

From [bp]	Molarity [pmol/l]	Average Size [bp]	Conc. [pg/μl]	To [bp]	Corr. Area	% of Total	Size distribution in CV [%]	Color
200	20,327.2	607	6,223.41	1,000	518.3	35	36.6	■

Assay Class: High Sensitivity DNA Assay
 Data Path: C:\...ents and Settings\Bioanalyzer\2012-04-09\2012-04-09_006.xad

Created: 4/9/2012 2:47:01 PM
 Modified: 4/9/2012 3:39:57 PM

Electropherogram Summary Continued ...



Overall Results for sample 4 : CMW12 500bp soni 1:20

Number of peaks found: 36 Corr. Area 1: 578.7
 Noise: 0.6

Peak table for sample 4 : CMW12 500bp soni 1:20

Peak	Size [bp]	Conc. [pg/μl]	Molarity [pmol/l]	Observations
1	35	125.00	5,411.3	Lower Marker
2	192	12.76	100.7	
3	261	16.92	98.3	
4	275	16.26	89.6	
5	283	17.74	95.0	
6	288	22.24	116.8	
7	335	21.56	97.5	
8	371	28.31	115.6	
9	389	19.52	76.1	
10	397	20.02	76.3	
11	409	21.87	80.9	
12	456	25.82	85.8	
13	500	34.89	105.7	
14	528	40.45	116.1	
15	552	31.96	87.7	
16	577	36.07	94.8	
17	595	52.21	133.0	
18	609	37.45	93.2	
19	647	64.08	150.0	
20	685	103.33	228.7	
21	760	129.23	257.6	
22	832	79.99	145.6	
23	929	141.54	230.9	
24	1,132	183.77	246.0	
25	1,385	146.68	160.5	
26	1,527	172.13	170.8	

Assay Class: High Sensitivity DNA Assay
 Data Path: C:\...ents and Settings\Bioanalyzer\2012-04-09\2012-04-09_006.xad

Created: 4/9/2012 2:47:01 PM
 Modified: 4/9/2012 3:39:57 PM

Electropherogram Summary Continued ...

... Peak table for sample 4 : CMW12 500bp soni 1:20

Peak	Size [bp]	Conc. [pg/μl]	Molarity [pmol/l]	Observations
27	1,718	72.49	63.9	
28	1,853	104.40	85.4	
29	2,003	183.88	139.1	
30	2,520	63.90	38.4	
31	2,710	66.40	37.1	
32	3,062	105.15	52.0	
33	4,412	38.81	13.3	
34	6,008	15.00	3.8	
35	7,277	11.18	2.3	
36	8,179	16.16	3.0	
37	10,380	75.00	10.9	Upper Marker
38	11,787	0.00	0.0	

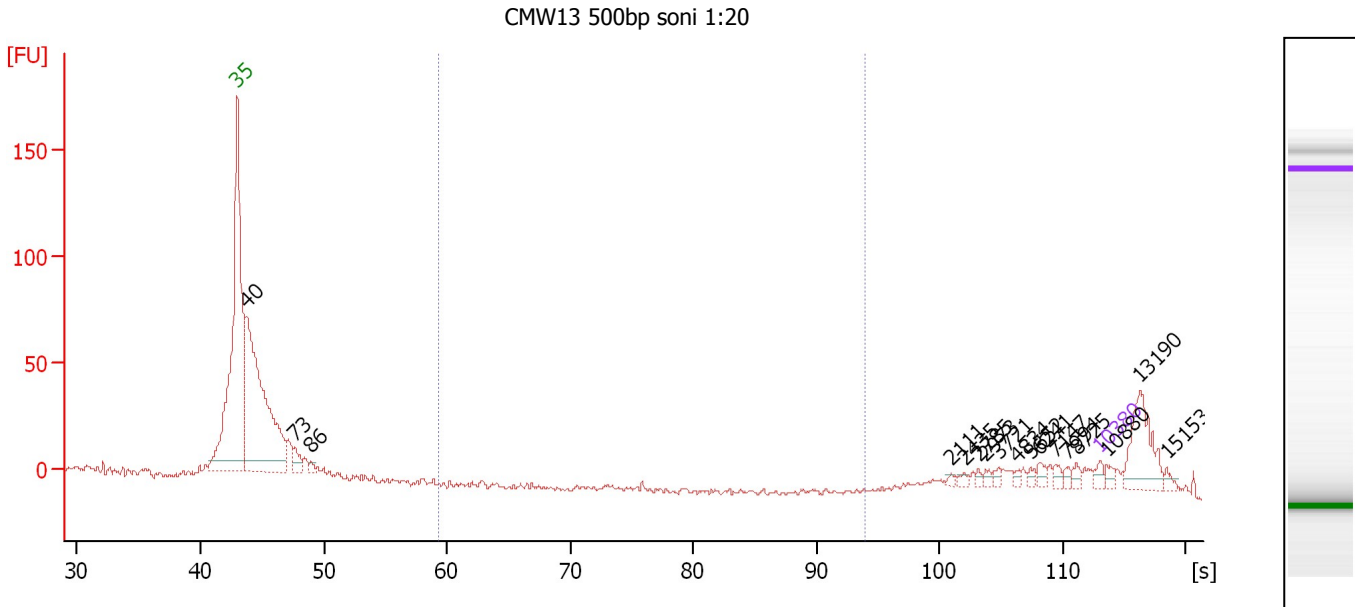
Region table for sample 4 : CMW12 500bp soni 1:20

From [bp]	Molarity [pmol/l]	Average Size [bp]	Conc. [pg/μl]	To [bp]	Corr. Area	% of Total	Size distribution in CV [%]	Color
200	5,433.9	613	1,740.79	1,000	578.7	45	35.2	

Assay Class: High Sensitivity DNA Assay
 Data Path: C:\...ents and Settings\Bioanalyzer\2012-04-09\2012-04-09_006.xad

Created: 4/9/2012 2:47:01 PM
 Modified: 4/9/2012 3:39:57 PM

Electropherogram Summary Continued ...



Overall Results for sample 5 : CMW13 500bp soni 1:20

Number of peaks found: 17 Corr. Area 1: 0.0
 Noise: 1.4

Peak table for sample 5 : CMW13 500bp soni 1:20

Peak	Size [bp]	Conc. [pg/μl]	Molarity [pmol/l]	Observations
1	35	125.00	5,411.3	Lower Marker
2	40	5,378.08	203,562.6	
3	73	255.56	5,337.2	
4	86	74.81	1,314.2	
5	2,111	28.84	20.7	
6	2,435	35.86	22.3	
7	2,785	33.89	18.4	
8	2,973	44.11	22.5	
9	3,721	47.78	19.5	
10	4,834	35.62	11.2	
11	5,652	46.98	12.6	
12	6,241	74.17	18.0	
13	7,147	61.89	13.1	
14	7,994	41.00	7.8	
15	8,725	67.81	11.8	
16	10,380	75.00	10.9	Upper Marker
17	10,880	0.00	0.0	
18	13,190	0.00	0.0	
19	15,153	0.00	0.0	

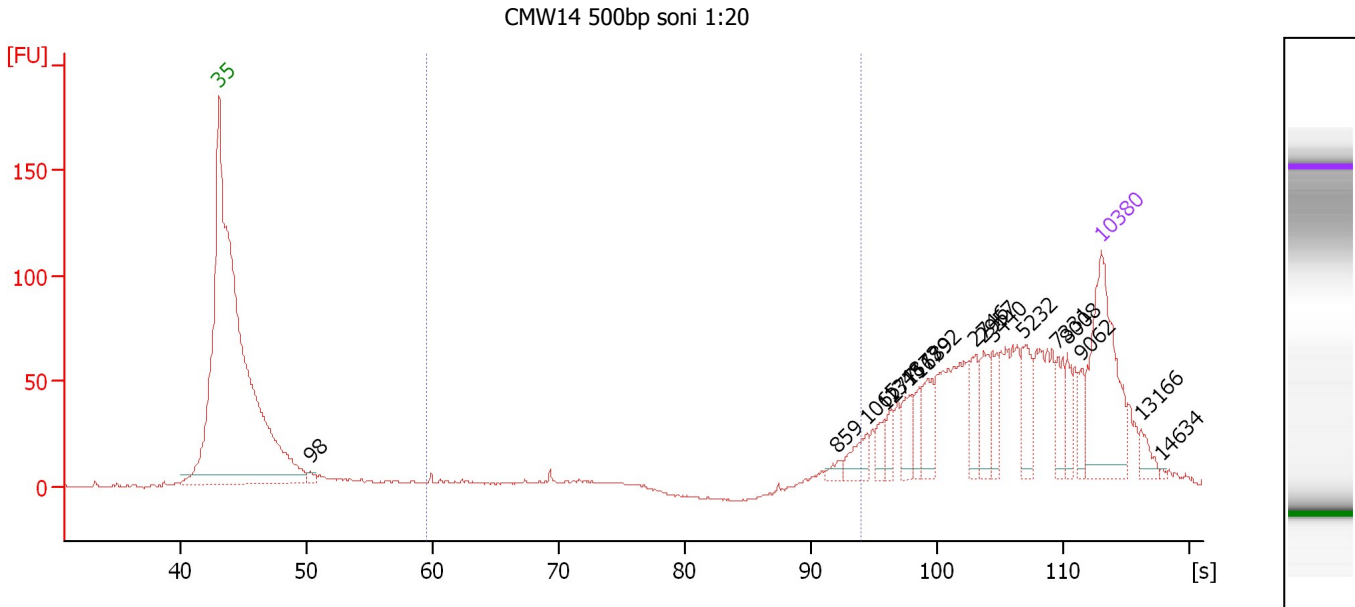
Region table for sample 5 : CMW13 500bp soni 1:20

From [bp]	Molarity [pmol/l]	Average Size [bp]	Conc. [pg/μl]	To [bp]	Corr. Area	% of Total	Size distribution in CV [%]	Color
200	0.0	395	0.00	1,000	0.0	0	0.0	Blue

Assay Class: High Sensitivity DNA Assay
 Data Path: C:\...ents and Settings\Bioanalyzer\2012-04-09\2012-04-09_006.xad

Created: 4/9/2012 2:47:01 PM
 Modified: 4/9/2012 3:39:57 PM

Electropherogram Summary Continued ...



Overall Results for sample 6 : CMW14 500bp soni 1:20

Number of peaks found: 17 Corr. Area 1: 72.7
 Noise: 0.6

Peak table for sample 6 : CMW14 500bp soni 1:20

Peak	Size [bp]	Conc. [pg/μl]	Molarity [pmol/l]	Observations
1	35	125.00	5,411.3	Lower Marker
2	98	5.23	81.2	
3	859	5.21	9.2	
4	1,065	15.17	21.6	
5	1,277	9.89	11.7	
6	1,348	8.70	9.8	
7	1,573	15.55	15.0	
8	1,689	10.06	9.0	
9	1,792	19.49	16.5	
10	2,746	15.44	8.5	
11	2,957	18.49	9.5	
12	3,440	13.93	6.1	
13	5,232	21.82	6.3	
14	7,331	15.18	3.1	
15	8,008	11.29	2.1	
16	9,062	9.56	1.6	
17	10,380	75.00	10.9	Upper Marker
18	13,166	0.00	0.0	
19	14,634	0.00	0.0	

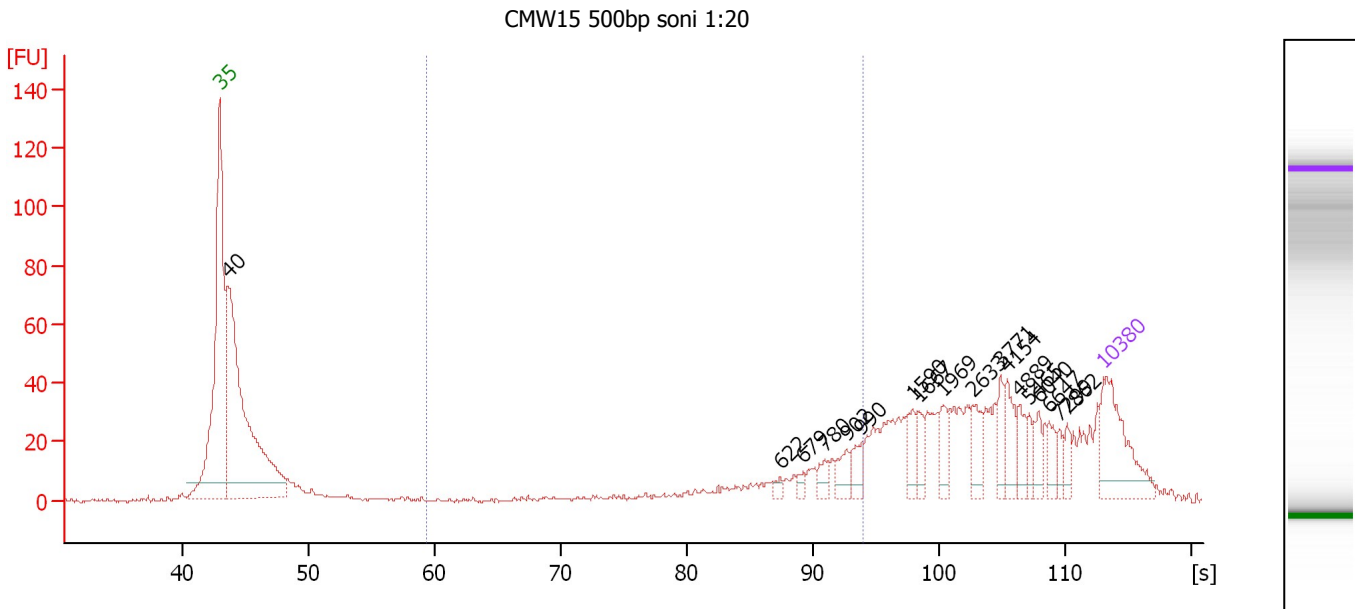
Region table for sample 6 : CMW14 500bp soni 1:20

From [bp]	Molarity [pmol/l]	Average Size [bp]	Conc. [pg/μl]	To [bp]	Corr. Area	% of Total	Size distribution in CV [%]	Color
200	122.6	706	35.57	1,000	72.7	7	40.6	Blue

Assay Class: High Sensitivity DNA Assay
 Data Path: C:\...ents and Settings\Bioanalyzer\2012-04-09\2012-04-09_006.xad

Created: 4/9/2012 2:47:01 PM
 Modified: 4/9/2012 3:39:57 PM

Electropherogram Summary Continued ...



Overall Results for sample 7 : CMW15 500bp soni 1:20

Number of peaks found: 18 Corr. Area 1: 148.1
 Noise: 0.5

Peak table for sample 7 : CMW15 500bp soni 1:20

Peak	Size [bp]	Conc. [pg/μl]	Molarity [pmol/l]	Observations
1	35	125.00	5,411.3	Lower Marker
2	40	598.80	22,898.2	
3	622	5.92	14.4	
4	679	7.35	16.4	
5	780	13.77	26.8	
6	902	19.57	32.9	
7	990	19.87	30.4	
8	1,590	21.89	20.9	
9	1,667	16.73	15.2	
10	1,969	26.16	20.1	
11	2,633	23.27	13.4	
12	3,771	21.30	8.6	
13	4,154	28.62	10.4	
14	4,889	18.76	5.8	
15	5,465	13.21	3.7	
16	6,040	17.77	4.5	
17	6,647	17.20	3.9	
18	7,299	10.73	2.2	
19	7,862	11.48	2.2	
20	10,380	75.00	10.9	Upper Marker

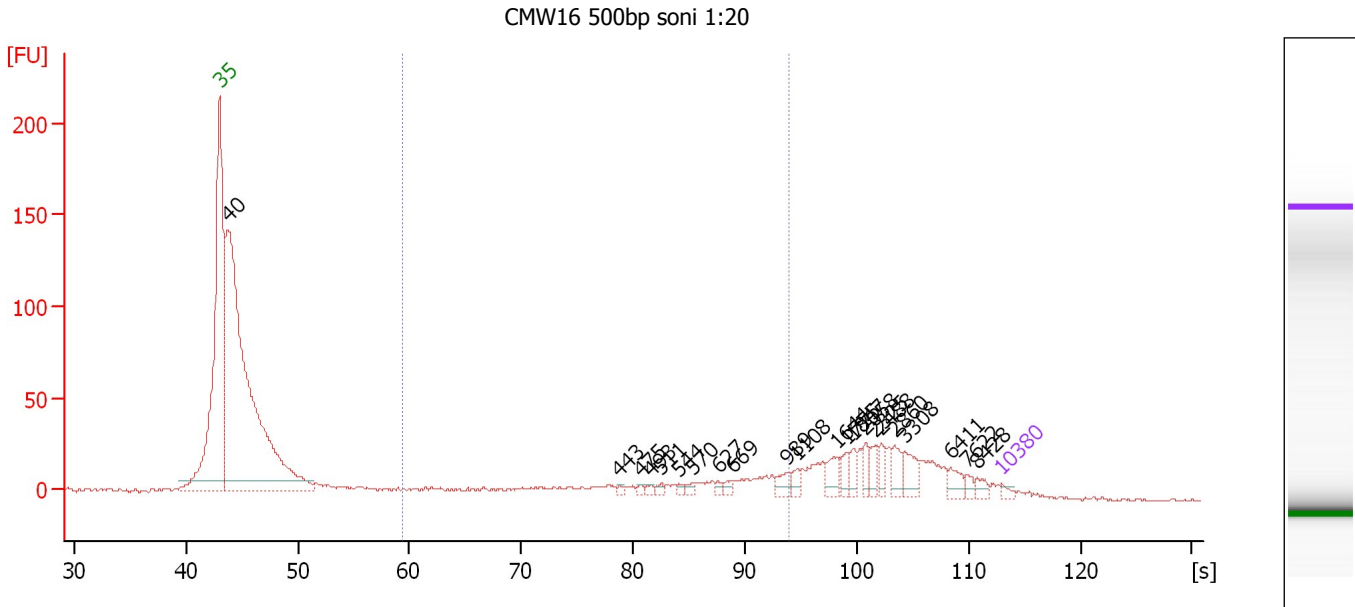
Region table for sample 7 : CMW15 500bp soni 1:20

From [bp]	Molarity [pmol/l]	Average Size [bp]	Conc. [pg/μl]	To [bp]	Corr. Area	% of Total	Size distribution in CV [%]	Color
200	416.3	695	165.15	1,000	148.1	14	27.3	Blue

Assay Class: High Sensitivity DNA Assay
 Data Path: C:\...ents and Settings\Bioanalyzer\2012-04-09\2012-04-09_006.xad

Created: 4/9/2012 2:47:01 PM
 Modified: 4/9/2012 3:39:57 PM

Electropherogram Summary Continued ...



Overall Results for sample 8 : CMW16 500bp soni 1:20

Number of peaks found: 22 Corr. Area 1: 206.9
 Noise: 0.7

Peak table for sample 8 : CMW16 500bp soni 1:20

Peak	Size [bp]	Conc. [pg/μl]	Molarity [pmol/l]	Observations
1	35	125.00	5,411.3	Lower Marker
2	40	18,293.45	694,808.6	
3	443	62.38	213.5	
4	475	69.38	221.1	
5	493	78.68	241.8	
6	511	83.11	246.4	
7	544	72.27	201.4	
8	570	92.59	246.0	
9	627	74.06	178.9	
10	669	109.91	248.9	
11	989	229.64	351.8	
12	1,108	157.08	214.8	
13	1,644	312.29	287.8	
14	1,775	196.31	167.6	
15	1,847	213.37	175.0	
16	2,058	196.66	144.8	
17	2,325	240.40	156.7	
18	2,488	213.05	129.7	
19	2,860	281.65	149.2	
20	3,308	364.82	167.1	
21	6,411	239.54	56.6	
22	7,622	107.00	21.3	
23	8,428	130.24	23.4	
24	10,380	75.00	10.9	Upper Marker

Assay Class: High Sensitivity DNA Assay
Data Path: C:\...ents and Settings\Bioanalyzer\2012-04-09\2012-04-09_006.xad

Created: 4/9/2012 2:47:01 PM
Modified: 4/9/2012 3:39:57 PM

Electropherogram Summary Continued ...

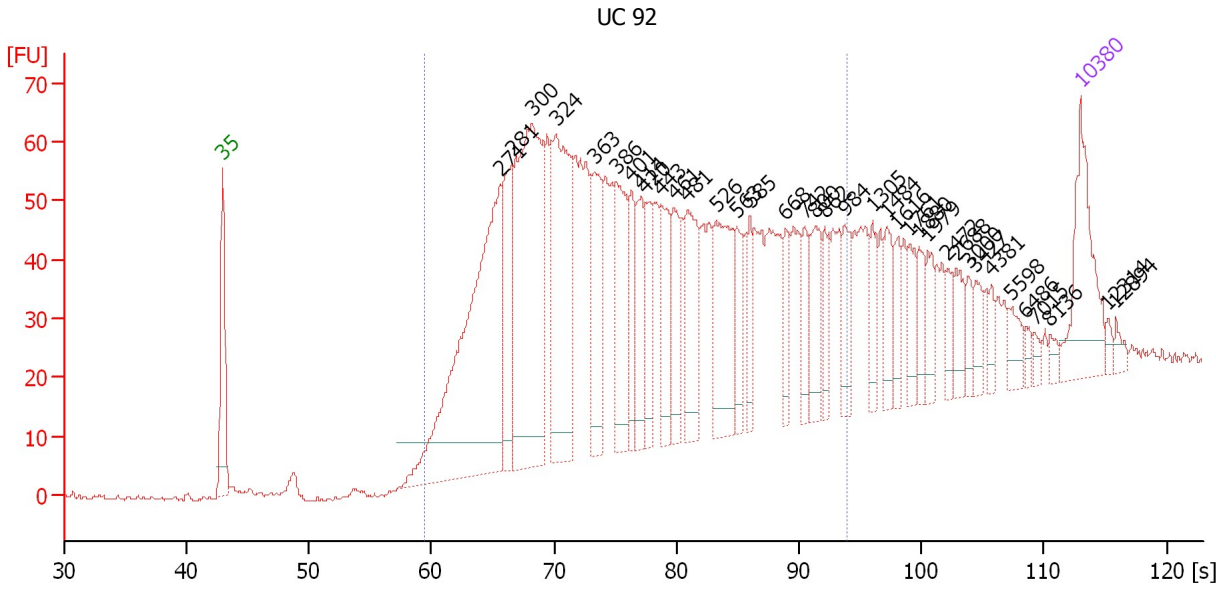
... Region table for sample 8 : CMW16 500bp soni 1:20

From [bp]	Molarity [pmol/l]	Average Size [bp]	Conc. [pg/μl]	To [bp]	Corr. Area	% of Total	Size distribution in CV [%]	Color
200	11,265.5	560	3,232.84	1,000	206.9	15	38.3	■

Assay Class: High Sensitivity DNA Assay
 Data Path: C:\...ents and Settings\Bioanalyzer\2012-04-09\2012-04-09_006.xad

Created: 4/9/2012 2:47:01 PM
 Modified: 4/9/2012 3:39:57 PM

Electropherogram Summary Continued ...



Overall Results for sample 9 : UC 92

Number of peaks found: 37 Corr. Area 1: 1,588.3
 Noise: 0.5

Peak table for sample 9 : UC 92

Peak	Size [bp]	Conc. [pg/μl]	Molarity [pmol/l]	Observations
1	35	125.00	5,411.3	Lower Marker
2	271	458.28	2,562.2	
3	281	106.10	572.3	
4	300	349.76	1,767.9	
5	324	224.18	1,047.7	
6	363	95.82	399.5	
7	386	105.44	414.2	
8	401	53.09	200.8	
9	414	62.40	228.6	
10	420	57.65	207.8	
11	443	64.83	221.9	
12	461	59.19	194.5	
13	481	90.72	285.8	
14	526	108.49	312.4	
15	563	40.72	109.7	
16	585	32.19	83.4	
17	668	30.00	68.0	
18	742	28.95	59.1	
19	800	49.51	93.8	
20	862	28.32	49.8	
21	984	33.97	52.3	
22	1,305	25.62	29.7	
23	1,484	28.64	29.3	
24	1,616	20.79	19.5	
25	1,761	23.13	19.9	
26	1,880	19.37	15.6	

Assay Class: High Sensitivity DNA Assay
 Data Path: C:\...ents and Settings\Bioanalyzer\2012-04-09\2012-04-09_006.xad


Created: 4/9/2012 2:47:01 PM
 Modified: 4/9/2012 3:39:57 PM

Electropherogram Summary Continued ...

... Peak table for sample 9 : UC 92

Peak	Size [bp]	Conc. [pg/μl]	Molarity [pmol/l]	Observations
27	1,979	21.79	16.7	
28	2,472	14.82	9.1	
29	2,688	22.00	12.4	
30	3,000	13.08	6.6	
31	3,427	16.03	7.1	
32	4,381	11.34	3.9	
33	5,598	16.91	4.6	
34	6,486	6.40	1.5	
35	7,015	6.60	1.4	
36	8,136	6.98	1.3	
37	10,380	75.00	10.9	Upper Marker
38	12,314	0.00	0.0	
39	12,894	0.00	0.0	

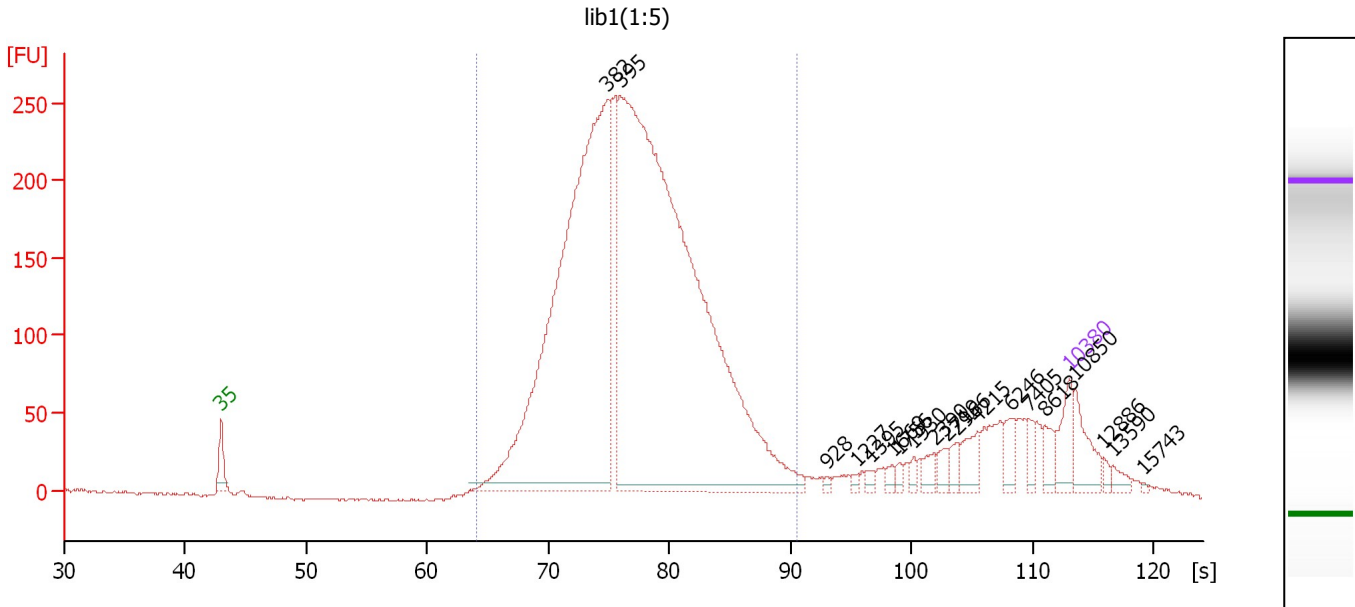
Region table for sample 9 : UC 92

From [bp]	Molarity [pmol/l]	Average Size [bp]	Conc. [pg/μl]	To [bp]	Corr. Area	% of Total	Size distribution in CV [%]	Color
200	10,125.7	447	2,470.43	1,000	1,588.3	83	39.9	

Assay Class: High Sensitivity DNA Assay
 Data Path: C:\...ents and Settings\Bioanalyzer\2012-04-09\2012-04-09_006.xad

Created: 4/9/2012 2:47:01 PM
 Modified: 4/9/2012 3:39:57 PM

Electropherogram Summary Continued ...



Overall Results for sample 10 : lib1(1:5)

Number of peaks found: 19 Corr. Area 1: 4,324.5
 Noise: 0.7

Peak table for sample 10 : lib1(1:5)

Peak	Size [bp]	Conc. [pg/μl]	Molarity [pmol/l]	Observations
1	35	125.00	5,411.3	Lower Marker
2	382	2,342.36	9,284.5	
3	395	3,477.17	13,322.0	
4	928	8.35	13.6	
5	1,227	8.49	10.5	
6	1,395	12.03	13.1	
7	1,669	13.77	12.5	
8	1,756	12.98	11.2	
9	1,930	13.66	10.7	
10	2,390	26.76	17.0	
11	2,719	28.21	15.7	
12	2,966	24.70	12.6	
13	4,215	60.96	21.9	
14	6,246	45.15	11.0	
15	7,405	32.18	6.6	
16	8,618	39.75	7.0	
17	10,380	75.00	10.9	Upper Marker
18	10,850	0.00	0.0	
19	12,886	0.00	0.0	
20	13,590	0.00	0.0	
21	15,743	0.00	0.0	

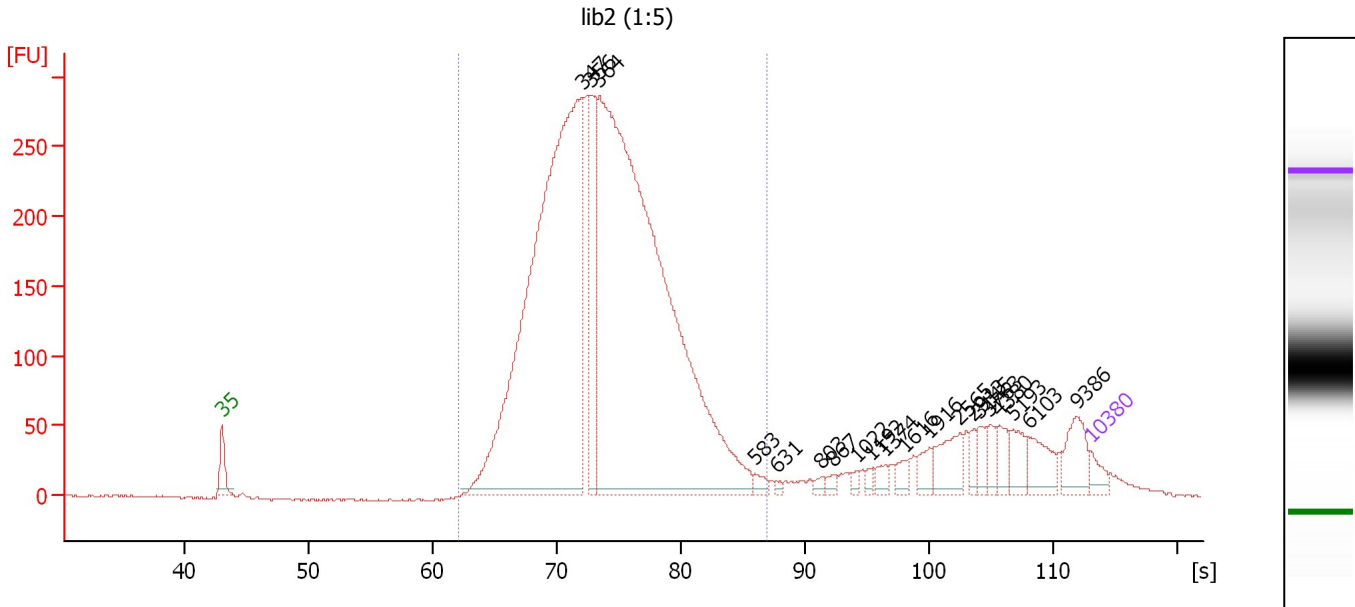
Region table for sample 10 : lib1(1:5)

From [bp]	Molarity [pmol/l]	Average Size [bp]	Conc. [pg/μl]	To [bp]	Corr. Area	% of Total	Size distribution in CV [%]	Color
252	22,830.2	423	6,077.06	751	4,324.5	86	19.2	Blue

Assay Class: High Sensitivity DNA Assay
 Data Path: C:\...ents and Settings\Bioanalyzer\2012-04-09\2012-04-09_006.xad

Created: 4/9/2012 2:47:01 PM
 Modified: 4/9/2012 3:39:57 PM

Electropherogram Summary Continued ...



Overall Results for sample 11 : lib2 (1:5)

Number of peaks found: 20 Corr. Area 1: 4,837.3
 Noise: 0.8

Peak table for sample 11 : lib2 (1:5)

Peak	Size [bp]	Conc. [pg/μl]	Molarity [pmol/l]	Observations
1	35	125.00	5,411.3	Lower Marker
2	347	7,139.58	31,210.9	
3	356	905.98	3,858.7	
4	364	8,926.15	37,175.1	
5	583	62.92	163.4	
6	631	20.42	49.0	
7	803	38.20	72.1	
8	867	44.42	77.6	
9	1,022	38.26	56.7	
10	1,192	37.55	47.7	
11	1,374	65.47	72.2	
12	1,616	78.36	73.5	
13	1,916	102.70	81.2	
14	2,565	242.07	143.0	
15	2,913	66.34	34.5	
16	3,145	100.93	48.6	
17	3,763	102.29	41.2	
18	4,380	119.99	41.5	
19	5,193	160.45	46.8	
20	6,103	205.03	50.9	
21	9,386	233.24	37.7	
22	10,380	75.00	10.9	Upper Marker

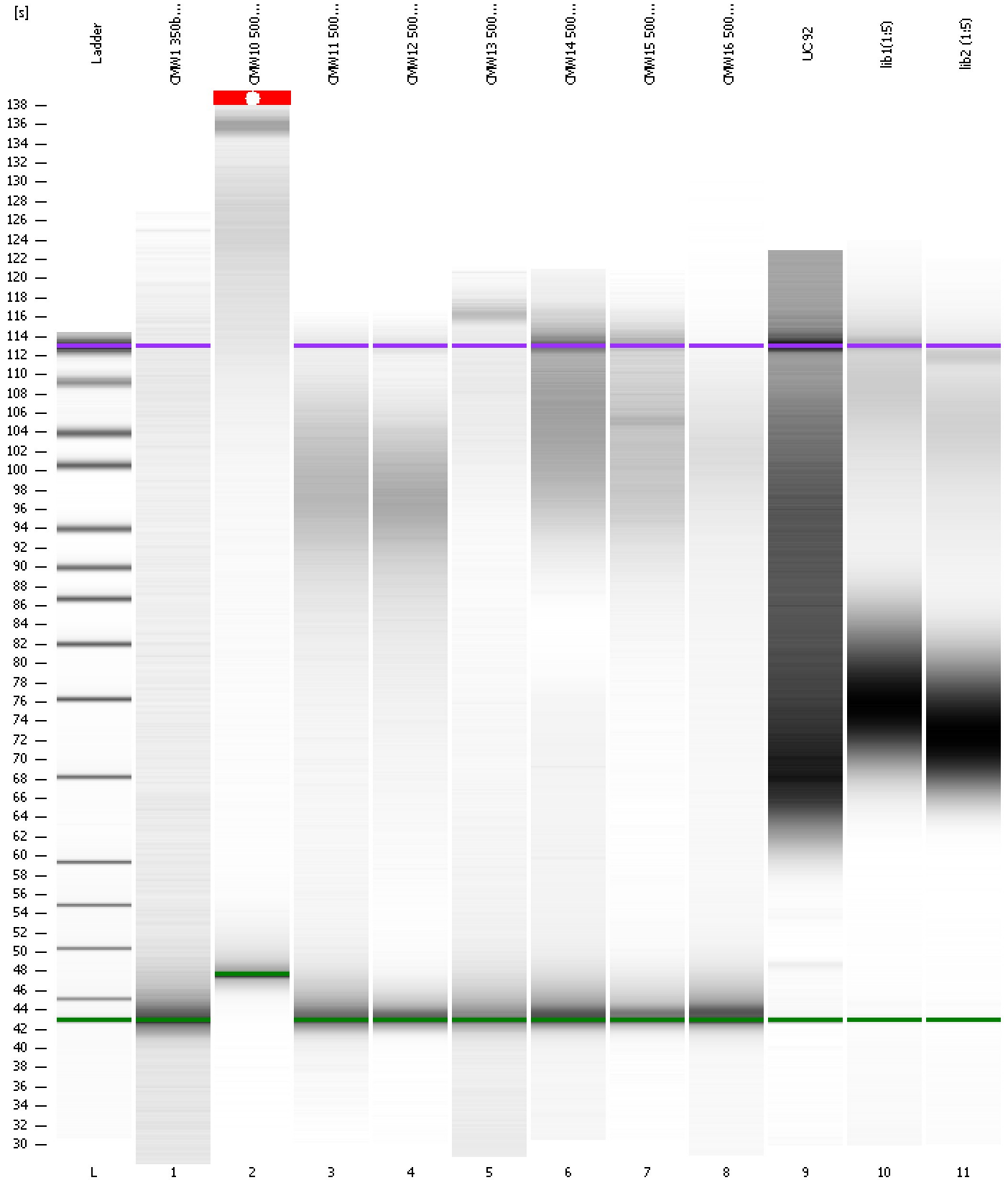
Region table for sample 11 : lib2 (1:5)

From [bp]	Molarity [pmol/l]	Average Size [bp]	Conc. [pg/μl]	To [bp]	Corr. Area	% of Total	Size distribution in CV [%]	Color
230	75,056.1	373	17,772.27	606	4,837.3	86	17.3	Blue

Assay Class: High Sensitivity DNA Assay
Data Path: C:\...ents and Settings\Bioanalyzer\2012-04-09\2012-04-09_006.xad

Created: 4/9/2012 2:47:01 PM
Modified: 4/9/2012 3:39:57 PM

Gel Image



Assay Class: High Sensitivity DNA Assay
 Data Path: C:\...ents and Settings\Bioanalyzer\2012-04-09\2012-04-09_006.xad

Created: 4/9/2012 2:47:01 PM
 Modified: 4/9/2012 3:39:57 PM

Run Logbook

Description	Number	Source	Category	Sub Category	Time	Time Zone	User	Host
Run ended on port 1 (Number of wells acquired: 12)		Instrument	Run		4/9/2012 3:28:20 PM	(GMT --07:00) Pacific Standard Time	UC Davis	D8XSMGH1
Run started on port 1 (File: C:\Documents and Settings\Bioanalyzer\2012-04-09\2012-04-09_006.xad)		Instrument	Run		4/9/2012 2:47:06 PM	(GMT --07:00) Pacific Standard Time	UC Davis	D8XSMGH1
Product Number : G2938B		Instrument	Run		4/9/2012 2:47:06 PM	(GMT --07:00) Pacific Standard Time	UC Davis	D8XSMGH1
Name :		Instrument	Run		4/9/2012 2:47:06 PM	(GMT --07:00) Pacific Standard Time	UC Davis	D8XSMGH1
Vendor : Agilent Technologies		Instrument	Run		4/9/2012 2:47:06 PM	(GMT --07:00) Pacific Standard Time	UC Davis	D8XSMGH1
Serial# : DE13701086		Instrument	Run		4/9/2012 2:47:06 PM	(GMT --07:00) Pacific Standard Time	UC Davis	D8XSMGH1
Firmware : C.01.069		Instrument	Run		4/9/2012 2:47:06 PM	(GMT --07:00) Pacific Standard Time	UC Davis	D8XSMGH1
Cartridge : Electrode		Instrument	Run		4/9/2012 2:47:06 PM	(GMT --07:00) Pacific Standard Time	UC Davis	D8XSMGH1