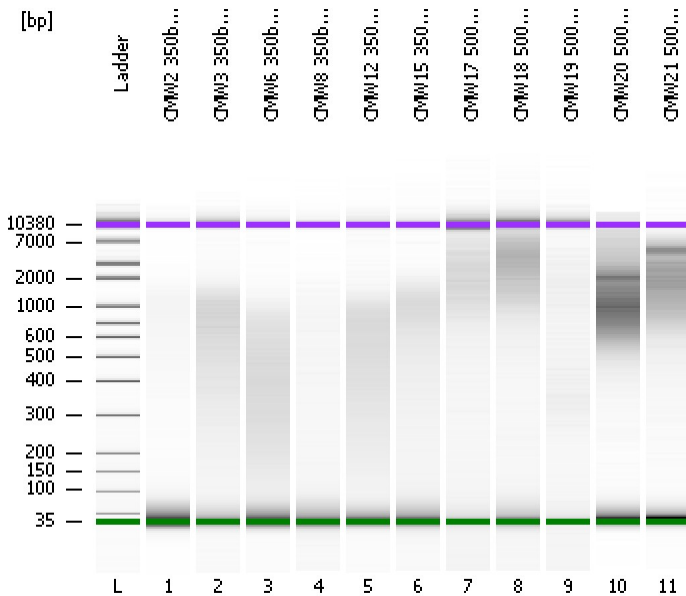


Assay Class: High Sensitivity DNA Assay
Data Path: C:\...ents and Settings\Bioanalyzer\2012-04-09\2012-04-09_007.xad

Created: 4/9/2012 3:41:07 PM
Modified: 4/9/2012 4:25:56 PM

Electrophoresis File Run Summary



Instrument Information:

Instrument Name: DE13701086 Firmware: C.01.069
Serial#: DE13701086 Type: G2938B

Assay Information:

Assay Origin Path: C:\Program Files\Agilent\2100 bioanalyzer\2100 expert\assays\dsDNA\High Sensitivity DNA.xsy

Assay Class: High Sensitivity DNA Assay

Version: 1.03

Assay Comments: Copyright © 2003-2010 Agilent Technologies

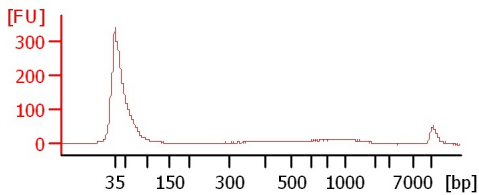
Chip Information:

Chip Lot #:

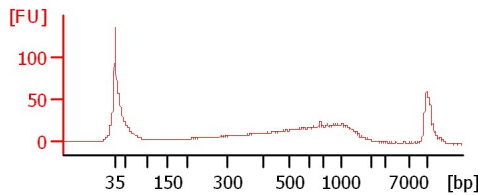
Reagent Kit Lot #:

Chip Comments:

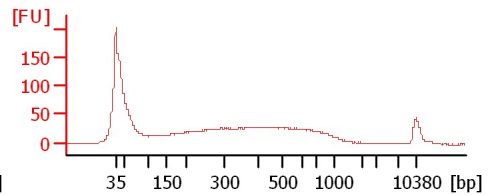
CMW2 350bp 1:15 18Cycles



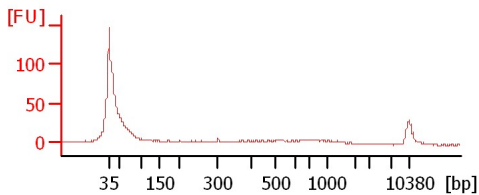
CMW3 350bp 1:15 18Cycles



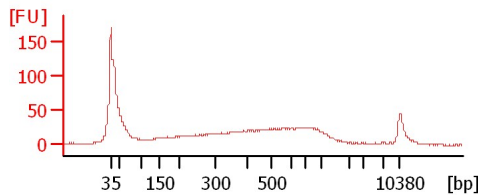
CMW6 350bp 1:15 16Cycles



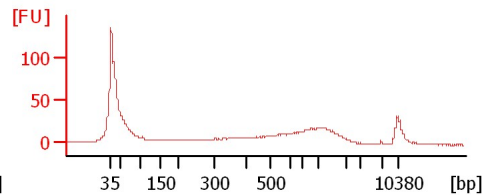
CMW8 350bp 1:15 19Cycles



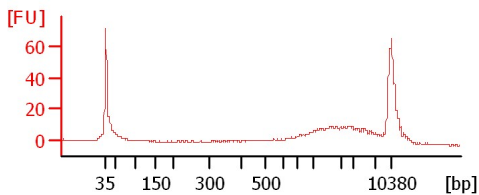
CMW12 350bp 1:15 13Cycles



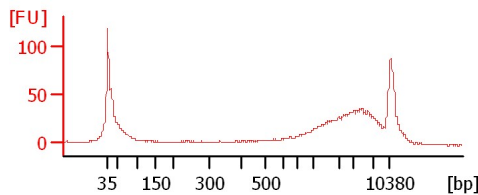
CMW15 350bp 1:15 16Cycles



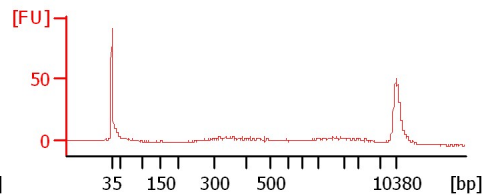
CMW17 500bp 1:20



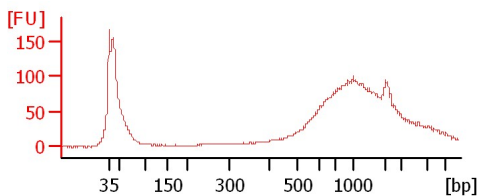
CMW18 500bp 1:20



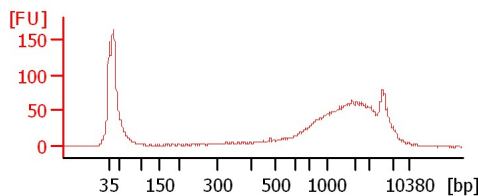
CMW19 500bp 1:20



CMW20 500bp 1:20



CMW21 500bp 1:20



Assay Class: High Sensitivity DNA Assay
 Data Path: C:\...ents and Settings\Bioanalyzer\2012-04-09\2012-04-09_007.xad

Created: 4/9/2012 3:41:07 PM
 Modified: 4/9/2012 4:25:56 PM

Electrophoresis File Run Summary (Chip Summary)

Sample Name	Sample Comment	Rest. Digest	Status	Observation	Result Label	Result Color
CMW2 350bp 1:15 18Cycles		<input type="checkbox"/>	✓			
CMW3 350bp 1:15 18Cycles		<input type="checkbox"/>	✓			
CMW6 350bp 1:15 16Cycles		<input type="checkbox"/>	✓			
CMW8 350bp 1:15 19Cycles		<input type="checkbox"/>	✓			
CMW12 350bp 1:15 13Cycles		<input type="checkbox"/>	✓			
CMW15 350bp 1:15 16Cycles		<input type="checkbox"/>	✓			
CMW17 500bp 1:20		<input type="checkbox"/>	✓			
CMW18 500bp 1:20		<input type="checkbox"/>	✓			
CMW19 500bp 1:20		<input type="checkbox"/>	✓			
CMW20 500bp 1:20		<input type="checkbox"/>	✓			
CMW21 500bp 1:20		<input type="checkbox"/>	✓			
Ladder		<input type="checkbox"/>	✓			

Chip Lot #

Reagent Kit Lot #

Chip Comments :

Assay Class: High Sensitivity DNA Assay
Data Path: C:\...ents and Settings\Bioanalyzer\2012-04-09\2012-04-09_007.xad

Created: 4/9/2012 3:41:07 PM
Modified: 4/9/2012 4:25:56 PM

Electrophoresis Assay Details

General Analysis Settings

Number of Available Sample and Ladder Wells (Max.) : 12
Minimum Visible Range [s] : 32
Maximum Visible Range [s] : 138
Start Analysis Time Range [s] : 33
End Analysis Time Range [s] : 137.5
Ladder Concentration [pg/μl] : 1950
Uses Standard Area for Ladder Fragments
Lower Marker Concentration [pg/μl] : 125
Upper Marker Concentration [pg/μl] : 75
Used Upper Marker for Quantitation
Standard Curve Fit is Point to Point
Show Data Aligned to Lower and Upper Marker

Integrator Settings

Integration Start Time [s] : 33.05
Integration End Time [s] : 137
Slope Threshold : 0.8
Height Threshold [FU] : 5
Area Threshold : 0.1
Width Threshold [s] : 0.6
Baseline Plateau [s] : 0.5

Filter Settings

Filter Width [s] : 0.5
Polynomial Order : 4

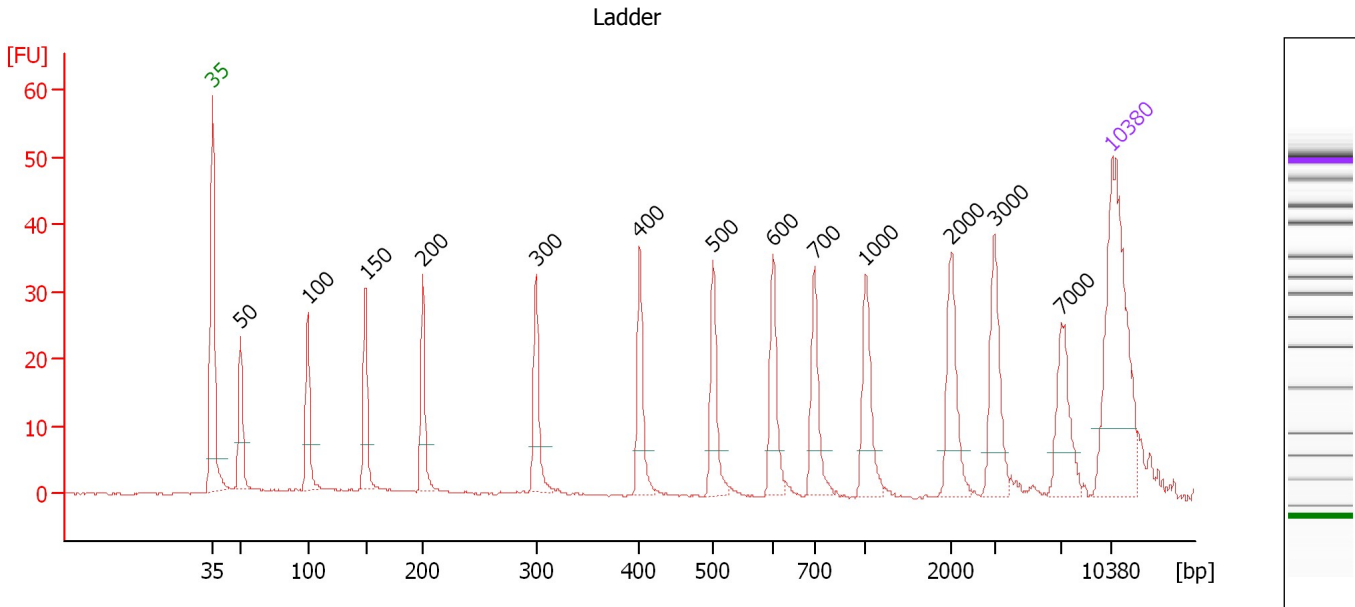
Ladder

Ladder Peak	Size	Area
1	35	160
2	50	210
3	100	208
4	150	221
5	200	242
6	300	270
7	400	305
8	500	306
9	600	336
10	700	321
11	1000	366
12	2000	413
13	3000	411
14	7000	400
15	10380	214

Assay Class: High Sensitivity DNA Assay
 Data Path: C:\...ents and Settings\Bioanalyzer\2012-04-09\2012-04-09_007.xad

Created: 4/9/2012 3:41:07 PM
 Modified: 4/9/2012 4:25:56 PM

Electropherogram Summary



Overall Results for Ladder

Noise: 0.2

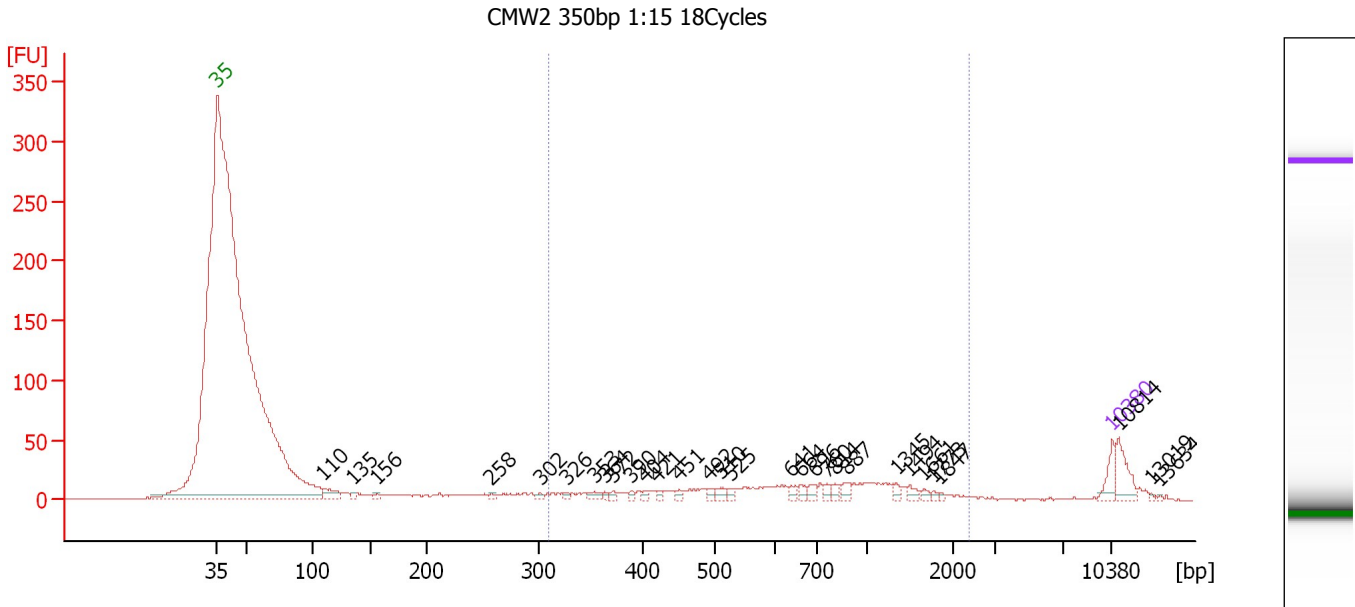
Peak table for Ladder

Peak	Size [bp]	Conc. [pg/μl]	Molarity [pmol/l]	Observations
1	35	125.00	5,411.3	Lower Marker
2	50	150.00	4,545.5	Ladder Peak
3	100	150.00	2,272.7	Ladder Peak
4	150	150.00	1,515.2	Ladder Peak
5	200	150.00	1,136.4	Ladder Peak
6	300	150.00	757.6	Ladder Peak
7	400	150.00	568.2	Ladder Peak
8	500	150.00	454.5	Ladder Peak
9	600	150.00	378.8	Ladder Peak
10	700	150.00	324.7	Ladder Peak
11	1,000	150.00	227.3	Ladder Peak
12	2,000	150.00	113.6	Ladder Peak
13	3,000	150.00	75.8	Ladder Peak
14	7,000	150.00	32.5	Ladder Peak
15	10,380	75.00	10.9	Upper Marker

Assay Class: High Sensitivity DNA Assay
 Data Path: C:\...ents and Settings\Bioanalyzer\2012-04-09\2012-04-09_007.xad

Created: 4/9/2012 3:41:07 PM
 Modified: 4/9/2012 4:25:56 PM

Electropherogram Summary Continued ...



Overall Results for sample 1 : CMW2 350bp 1:15 18Cycles

Number of peaks found: 30 Corr. Area 1: 390.2
 Noise: 0.4

Peak table for sample 1 : CMW2 350bp 1:15 18Cycles


Peak	Size [bp]	Conc. [pg/μl]	Molarity [pmol/l]	Observations
1	35	125.00	5,411.3	Lower Marker
2	110	108.82	1,497.2	
3	135	29.39	328.7	
4	156	23.09	223.7	
5	258	16.65	97.8	
6	302	22.08	110.9	
7	326	19.19	89.1	
8	353	36.88	158.2	
9	364	18.85	78.4	
10	372	20.65	84.2	
11	390	17.57	68.3	
12	404	21.28	79.8	
13	421	18.60	67.0	
14	451	19.71	66.2	
15	492	25.49	78.5	
16	510	40.91	121.6	
17	525	21.43	61.8	
18	641	29.08	68.8	
19	664	33.75	77.0	
20	696	36.60	79.6	
21	760	25.49	50.8	
22	814	28.63	53.3	
23	887	40.66	69.4	
24	1,345	22.03	24.8	
25	1,494	27.99	28.4	
26	1,661	17.54	16.0	

Assay Class: High Sensitivity DNA Assay
 Data Path: C:\...ents and Settings\Bioanalyzer\2012-04-09\2012-04-09_007.xad


Created: 4/9/2012 3:41:07 PM
 Modified: 4/9/2012 4:25:56 PM

Electropherogram Summary Continued ...

... Peak table for sample 1 : CMW2 350bp 1:15 18Cycles

Peak	Size [bp]	Conc. [pg/μl]	Molarity [pmol/l]	Observations
27	1,773	10.39	8.9	
28	1,847	7.96	6.5	
29	 10,380	75.00	10.9	Upper Marker
30	10,814	0.00	0.0	
31	13,019	0.00	0.0	
32	13,634	0.00	0.0	

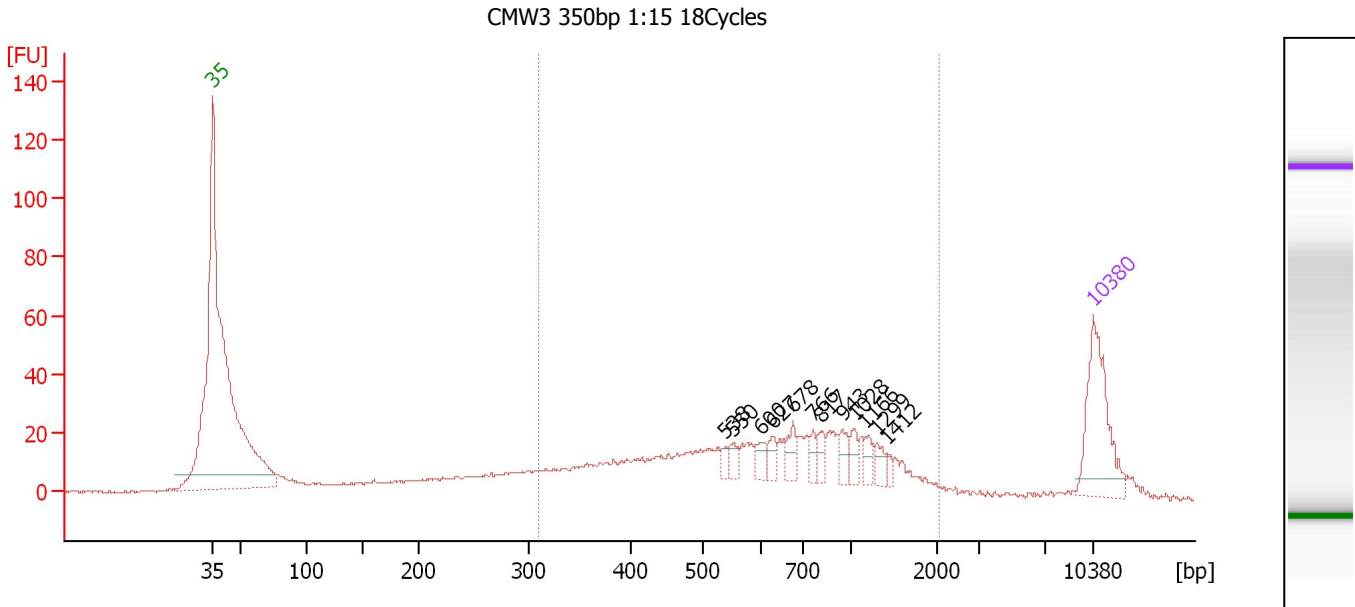
Region table for sample 1 : CMW2 350bp 1:15 18Cycles

From [bp]	Molarity [pmol/l]	Average Size [bp]	Conc. [pg/μl]	To [bp]	Corr. Area	% of Total	Size distribution in CV [%]	Color
309	3,261.7	793	1,231.28	2,378	390.2	61	55.5	

Assay Class: High Sensitivity DNA Assay
 Data Path: C:\...ents and Settings\Bioanalyzer\2012-04-09\2012-04-09_007.xad

Created: 4/9/2012 3:41:07 PM
 Modified: 4/9/2012 4:25:56 PM

Electropherogram Summary Continued ...



Setpoint Deviations for sample 2 : CMW3 350bp 1:15 18Cycles

Height Threshold [FU] : 10

Overall Results for sample 2 : CMW3 350bp 1:15 18Cycles

Number of peaks found: 12 Corr. Area 1: 548.4
 Noise: 0.4

Peak table for sample 2 : CMW3 350bp 1:15 18Cycles

Peak	Size [bp]	Conc. [pg/µl]	Molarity [pmol/l]	Observations
1	35	125.00	5,411.3	Lower Marker
2	538	7.07	19.9	
3	550	10.36	28.6	
4	600	12.55	31.7	
5	627	12.65	30.6	
6	678	17.97	40.1	
7	766	10.75	21.3	
8	817	12.82	23.8	
9	943	13.04	21.0	
10	1,028	12.57	18.5	
11	1,166	11.59	15.1	
12	1,299	10.84	12.6	
13	1,412	4.99	5.3	
14	10,380	75.00	10.9	Upper Marker

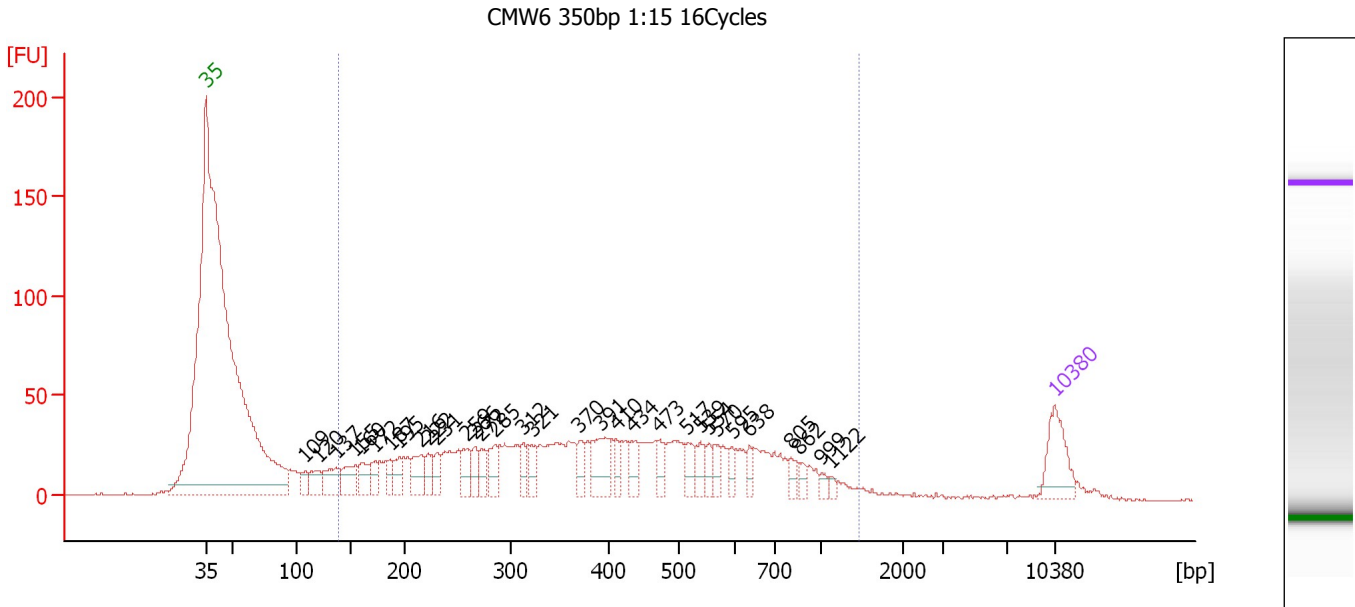
Region table for sample 2 : CMW3 350bp 1:15 18Cycles

From [bp]	Molarity [pmol/l]	Average Size [bp]	Conc. [pg/µl]	To [bp]	Corr. Area	% of Total	Size distribution in CV [%]	Color
309	1,447.2	727	530.64	2,064	548.4	74	50.4	Blue

Assay Class: High Sensitivity DNA Assay
 Data Path: C:\...ents and Settings\Bioanalyzer\2012-04-09\2012-04-09_007.xad

Created: 4/9/2012 3:41:07 PM
 Modified: 4/9/2012 4:25:56 PM

Electropherogram Summary Continued ...



Setpoint Deviations for sample 3 : CMW6 350bp 1:15 16Cycles

Height Threshold [FU] : 10

Overall Results for sample 3 : CMW6 350bp 1:15 16Cycles

Number of peaks found: 32 Corr. Area 1: 1,355.9
 Noise: 0.3

Peak table for sample 3 : CMW6 350bp 1:15 16Cycles

Peak	Size [bp]	Conc. [pg/μl]	Molarity [pmol/l]	Observations
1	35	125.00	5,411.3	Lower Marker
2	109	37.04	515.7	
3	120	51.51	647.7	
4	137	75.82	841.3	
5	155	69.29	679.0	
6	160	57.66	545.7	
7	172	46.01	404.2	
8	187	36.05	292.4	
9	195	41.67	323.3	
10	216	66.06	464.0	
11	222	40.27	274.6	
12	231	40.04	263.0	
13	259	50.23	294.1	
14	266	42.04	239.2	
15	272	40.57	226.2	
16	285	52.19	277.7	
17	312	35.39	171.7	
18	321	47.25	222.7	
19	370	40.25	164.9	
20	391	95.91	371.6	
21	410	31.20	115.2	
22	434	41.54	144.9	

Assay Class: High Sensitivity DNA Assay
 Data Path: C:\...ents and Settings\Bioanalyzer\2012-04-09\2012-04-09_007.xad


Created: 4/9/2012 3:41:07 PM
 Modified: 4/9/2012 4:25:56 PM

Electropherogram Summary Continued ...

... Peak table for sample 3 : CMW6 350bp 1:15 16Cycles

Peak	Size [bp]	Conc. [pg/μl]	Molarity [pmol/l]	Observations
23	473	29.35	94.1	
24	517	37.28	109.4	
25	539	37.35	105.0	
26	554	24.72	67.6	
27	570	29.69	79.0	
28	595	22.12	56.3	
29	638	22.11	52.5	
30	805	20.87	39.3	
31	862	16.02	28.2	
32	999	10.83	16.4	
33	1,122	7.92	10.7	
34	10,380	75.00	10.9	Upper Marker

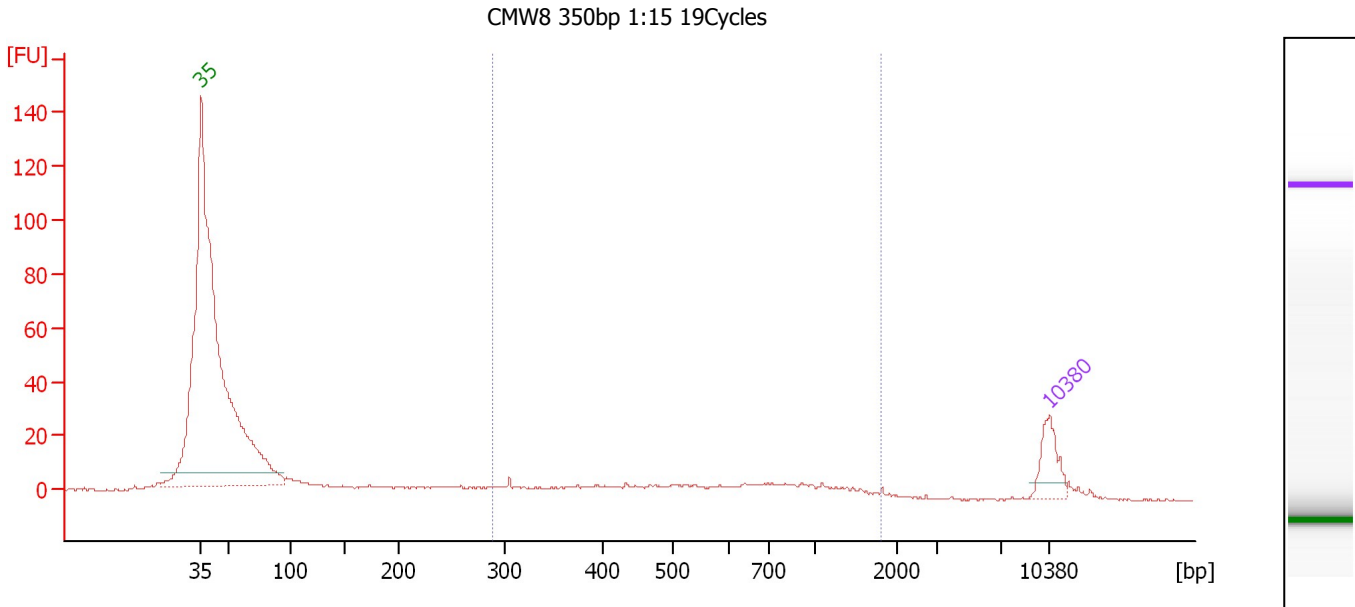
Region table for sample 3 : CMW6 350bp 1:15 16Cycles

From [bp]	Molarity [pmol/l]	Average Size [bp]	Conc. [pg/μl]	To [bp]	Corr. Area	% of Total	Size distribution in CV [%]	Color
139	10,142.9	436	2,074.29	1,461	1,355.9	90	50.3	

Assay Class: High Sensitivity DNA Assay
 Data Path: C:\...ents and Settings\Bioanalyzer\2012-04-09\2012-04-09_007.xad

Created: 4/9/2012 3:41:07 PM
 Modified: 4/9/2012 4:25:56 PM

Electropherogram Summary Continued ...



Overall Results for sample 4 : CMW8 350bp 1:15 19Cycles

Number of peaks found: 0 Corr. Area 1: 129.7
 Noise: 0.4

Peak table for sample 4 : CMW8 350bp 1:15 19Cycles

Peak	Size [bp]	Conc. [pg/μl]	Molarity [pmol/l]	Observations
1	35	125.00	5,411.3	Lower Marker
2	10,380	75.00	10.9	Upper Marker

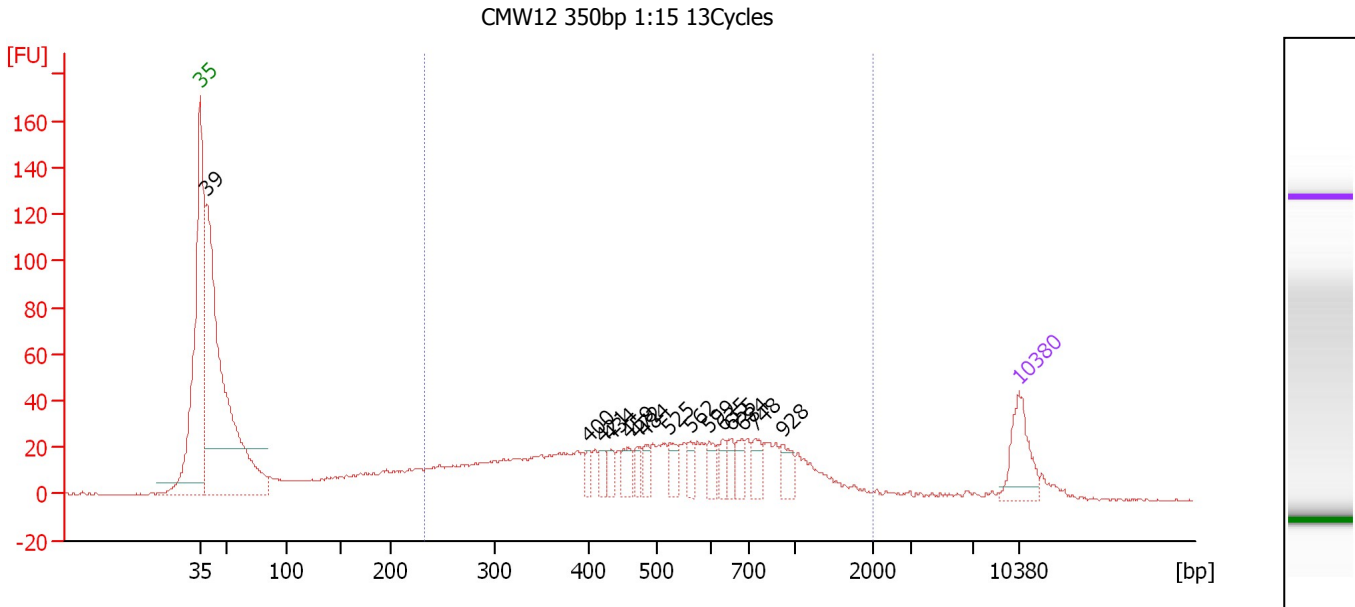
Region table for sample 4 : CMW8 350bp 1:15 19Cycles

From [bp]	Molarity [pmol/l]	Average Size [bp]	Conc. [pg/μl]	To [bp]	Corr. Area	% of Total	Size distribution in CV [%]	Color
289	875.0	662	290.80	1,798	129.7	58	50.7	Blue

Assay Class: High Sensitivity DNA Assay
 Data Path: C:\...ents and Settings\Bioanalyzer\2012-04-09\2012-04-09_007.xad

Created: 4/9/2012 3:41:07 PM
 Modified: 4/9/2012 4:25:56 PM

Electropherogram Summary Continued ...



Setpoint Deviations for sample 5 : CMW12 350bp 1:15 13Cycles

Height Threshold [FU] : 20

Overall Results for sample 5 : CMW12 350bp 1:15 13Cycles

Number of peaks found: 15 Corr. Area 1: 857.4
 Noise: 0.3

Peak table for sample 5 : CMW12 350bp 1:15 13Cycles

Peak	Size [bp]	Conc. [pg/μl]	Molarity [pmol/l]	Observations
1	35	125.00	5,411.3	Lower Marker
2	39	1,192.46	46,646.8	
3	400	22.64	85.7	
4	421	24.49	88.2	
5	434	27.70	96.8	
6	459	36.97	122.0	
7	472	23.42	75.2	
8	484	27.64	86.6	
9	525	38.20	110.2	
10	562	26.65	71.8	
11	599	29.93	75.7	
12	635	24.22	57.8	
13	655	26.27	60.8	
14	684	31.89	70.6	
15	748	37.57	76.1	
16	928	37.27	60.8	
17	10,380	75.00	10.9	Upper Marker

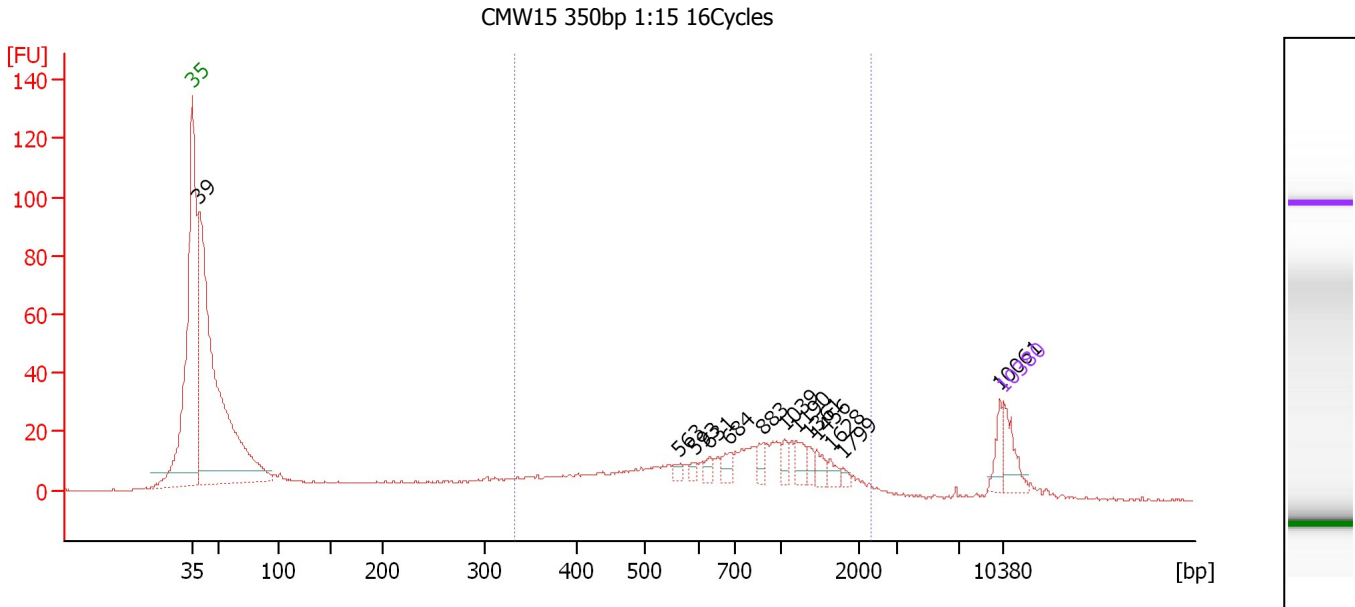
Region table for sample 5 : CMW12 350bp 1:15 13Cycles

From [bp]	Molarity [pmol/l]	Average Size [bp]	Conc. [pg/μl]	To [bp]	Corr. Area	% of Total	Size distribution in CV [%]	Color
232	4,335.4	581	1,238.32	2,018	857.4	53	53.1	Blue

Assay Class: High Sensitivity DNA Assay
 Data Path: C:\...ents and Settings\Bioanalyzer\2012-04-09\2012-04-09_007.xad

Created: 4/9/2012 3:41:07 PM
 Modified: 4/9/2012 4:25:56 PM

Electropherogram Summary Continued ...



Overall Results for sample 6 : CMW15 350bp 1:15 16Cycles

Number of peaks found: 13 Corr. Area 1: 390.9
 Noise: 0.3

Peak table for sample 6 : CMW15 350bp 1:15 16Cycles

Peak	Size [bp]	Conc. [pg/μl]	Molarity [pmol/l]	Observations
1	35	125.00	5,411.3	Lower Marker
2	39	2,222.78	86,182.3	
3	563	16.42	44.2	
4	593	18.38	47.0	
5	631	21.35	51.3	
6	684	35.06	77.7	
7	883	35.25	60.4	
8	1,039	27.21	39.7	
9	1,190	41.69	53.1	
10	1,361	25.66	28.6	
11	1,456	30.28	31.5	
12	1,628	22.96	21.4	
13	1,799	13.23	11.1	
14	10,061	46.99	7.1	
15	10,380	75.00	10.9	Upper Marker

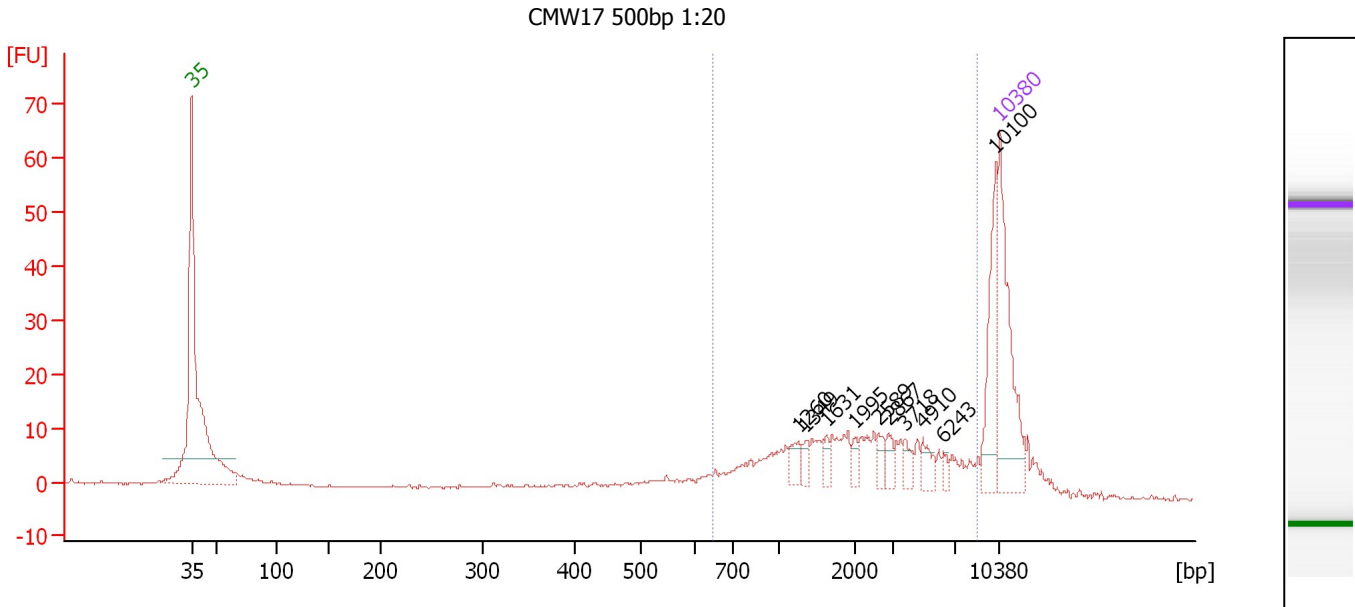
Region table for sample 6 : CMW15 350bp 1:15 16Cycles

From [bp]	Molarity [pmol/l]	Average Size [bp]	Conc. [pg/μl]	To [bp]	Corr. Area	% of Total	Size distribution in CV [%]	Color
334	2,929.1	860	1,221.50	2,313	390.9	38	51.6	Blue

Assay Class: High Sensitivity DNA Assay
 Data Path: C:\...ents and Settings\Bioanalyzer\2012-04-09\2012-04-09_007.xad

Created: 4/9/2012 3:41:07 PM
 Modified: 4/9/2012 4:25:56 PM

Electropherogram Summary Continued ...



Setpoint Deviations for sample 7 : CMW17 500bp 1:20

Height Threshold [FU] : 7

Overall Results for sample 7 : CMW17 500bp 1:20

Number of peaks found: 10 Corr. Area 1: 186.7
 Noise: 0.2

Peak table for sample 7 : CMW17 500bp 1:20

Peak	Size [bp]	Conc. [pg/µl]	Molarity [pmol/l]	Observations
1	35	125.00	5,411.3	Lower Marker
2	1,260	11.17	13.4	
3	1,349	6.51	7.3	
4	1,631	6.34	5.9	
5	1,995	5.92	4.5	
6	2,589	6.84	4.0	
7	2,867	7.54	4.0	
8	3,718	7.86	3.2	
9	4,910	10.56	3.3	
10	6,243	4.29	1.0	
11	10,100	42.90	6.4	
12	10,380	75.00	10.9	Upper Marker

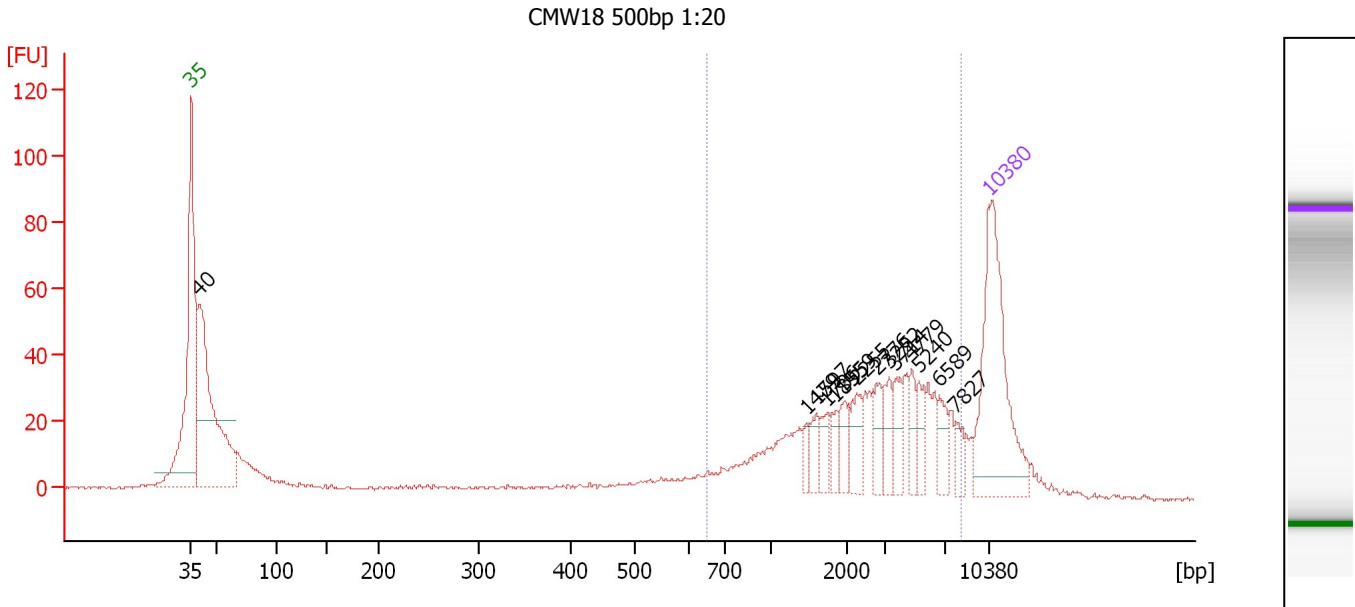
Region table for sample 7 : CMW17 500bp 1:20

From [bp]	Molarity [pmol/l]	Average Size [bp]	Conc. [pg/µl]	To [bp]	Corr. Area	% of Total	Size distribution in CV [%]	Color
650	194.8	2,819	216.05	8,759	186.7	65	73.5	Blue

Assay Class: High Sensitivity DNA Assay
 Data Path: C:\...ents and Settings\Bioanalyzer\2012-04-09\2012-04-09_007.xad

Created: 4/9/2012 3:41:07 PM
 Modified: 4/9/2012 4:25:56 PM

Electropherogram Summary Continued ...



Setpoint Deviations for sample 8 : CMW18 500bp 1:20

Height Threshold [FU] : 20

Overall Results for sample 8 : CMW18 500bp 1:20

Number of peaks found: 14 Corr. Area 1: 501.4
 Noise: 0.5

Peak table for sample 8 : CMW18 500bp 1:20

Peak	Size [bp]	Conc. [pg/μl]	Molarity [pmol/l]	Observations
1	35	125.00	5,411.3	Lower Marker
2	40	192.38	7,326.7	
3	1,479	5.89	6.0	
4	1,597	8.79	8.3	
5	1,736	8.95	7.8	
6	1,855	8.09	6.6	
7	1,959	11.42	8.8	
8	2,255	13.67	9.2	
9	2,776	11.54	6.3	
10	3,252	11.78	5.5	
11	3,714	12.08	4.9	
12	4,779	9.62	3.0	
13	5,240	10.17	2.9	
14	6,589	11.09	2.5	
15	7,827	7.25	1.4	
16	10,380	75.00	10.9	Upper Marker

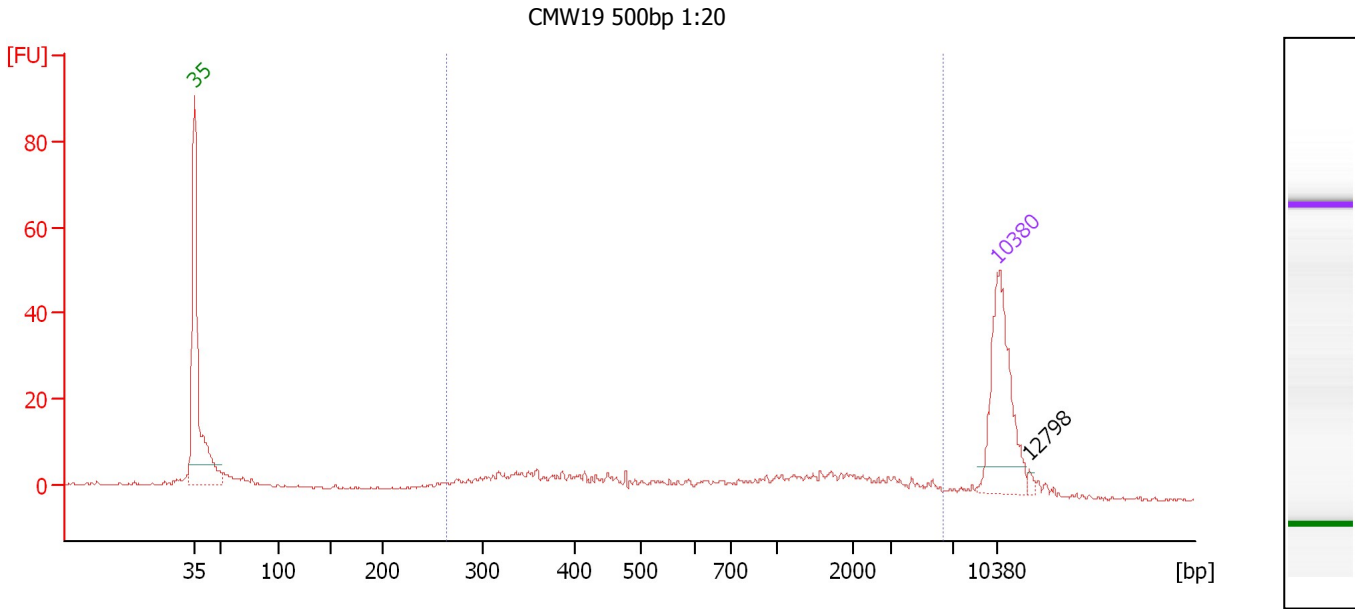
Region table for sample 8 : CMW18 500bp 1:20

From [bp]	Molarity [pmol/l]	Average Size [bp]	Conc. [pg/μl]	To [bp]	Corr. Area	% of Total	Size distribution in CV [%]	Color
648	169.7	3,251	223.86	8,260	501.4	57	63.5	Blue

Assay Class: High Sensitivity DNA Assay
 Data Path: C:\...ents and Settings\Bioanalyzer\2012-04-09\2012-04-09_007.xad

Created: 4/9/2012 3:41:07 PM
 Modified: 4/9/2012 4:25:56 PM

Electropherogram Summary Continued ...



Overall Results for sample 9 : CMW19 500bp 1:20

Number of peaks found: 1 Corr. Area 1: 166.8
 Noise: 0.3

Peak table for sample 9 : CMW19 500bp 1:20

Peak	Size [bp]	Conc. [pg/μl]	Molarity [pmol/l]	Observations
1	35	125.00	5,411.3	Lower Marker
2	10,380	75.00	10.9	Upper Marker
3	12,798	0.00	0.0	

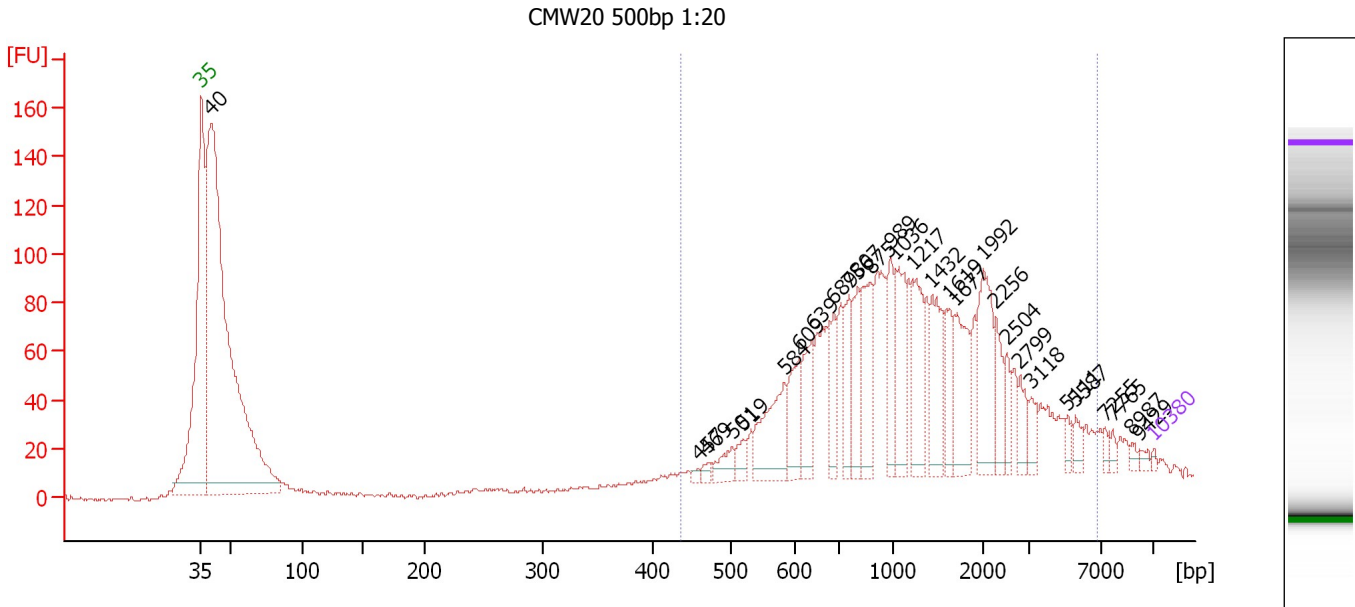
Region table for sample 9 : CMW19 500bp 1:20

From [bp]	Molarity [pmol/l]	Average Size [bp]	Conc. [pg/μl]	To [bp]	Corr. Area	% of Total	Size distribution in CV [%]	Color
264	504.6	1,283	179.61	6,418	166.8	78	100.0	Blue

Assay Class: High Sensitivity DNA Assay
 Data Path: C:\...ents and Settings\Bioanalyzer\2012-04-09\2012-04-09_007.xad

Created: 4/9/2012 3:41:07 PM
 Modified: 4/9/2012 4:25:56 PM

Electropherogram Summary Continued ...



Overall Results for sample 10 : CMW20 500bp 1:20

Number of peaks found: 29 Corr. Area 1: 1,689.2
 Noise: 1.0

Peak table for sample 10 : CMW20 500bp 1:20


Peak	Size [bp]	Conc. [pg/μl]	Molarity [pmol/l]	Observations
1	35	125.00	5,411.3	Lower Marker
2	40	42,423.84	1,614,552.9	
3	457	148.94	493.3	
4	469	276.28	892.3	
5	501	792.39	2,397.6	
6	519	562.47	1,641.1	
7	584	3,010.66	7,807.6	
8	609	1,738.79	4,326.9	
9	639	1,790.85	4,245.4	
10	689	1,313.33	2,889.0	
11	756	1,715.53	3,438.6	
12	807	1,740.83	3,270.0	
13	875	2,723.86	4,715.4	
14	989	1,781.00	2,729.7	
15	1,036	2,547.22	3,725.4	
16	1,217	2,295.51	2,858.5	
17	1,432	2,153.72	2,278.0	
18	1,619	1,148.43	1,074.7	
19	1,677	2,308.77	2,085.5	
20	1,992	2,674.70	2,034.2	
21	2,256	1,102.01	740.2	
22	2,504	616.46	373.1	
23	2,799	687.01	371.9	
24	3,118	574.20	279.0	
25	5,111	285.75	84.7	
26	5,587	394.34	106.9	

Assay Class: High Sensitivity DNA Assay
 Data Path: C:\...ents and Settings\Bioanalyzer\2012-04-09\2012-04-09_007.xad


Created: 4/9/2012 3:41:07 PM
 Modified: 4/9/2012 4:25:56 PM

Electropherogram Summary Continued ...

... Peak table for sample 10 : CMW20 500bp 1:20

Peak	Size [bp]	Conc. [pg/μl]	Molarity [pmol/l]	Observations
27	7,255	215.01	44.9	
28	7,765	179.59	35.0	
29	8,987	164.49	27.7	
30	9,429	171.79	27.6	
31	 10,380	75.00	10.9	Upper Marker

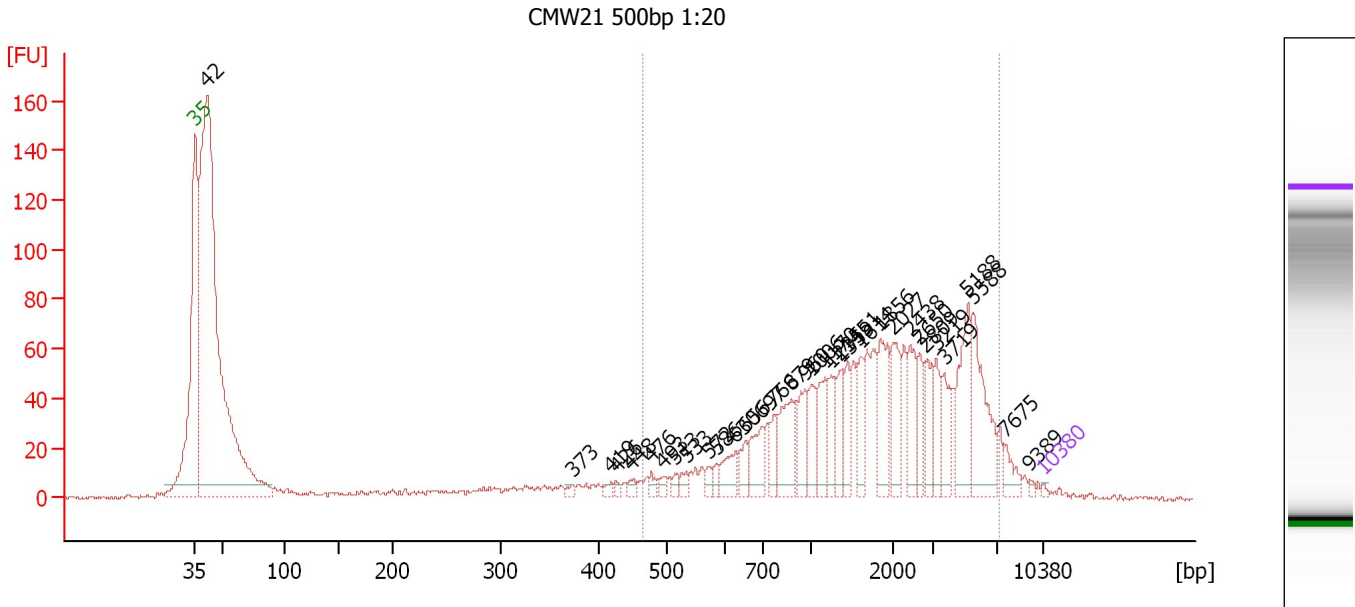
Region table for sample 10 : CMW20 500bp 1:20

From [bp]	Molarity [pmol/l]	Average Size [bp]	Conc. [pg/μl]	To [bp]	Corr. Area	% of Total	Size distribution in CV [%]	Color
434	75,646.9	1,516	48,117.31	6,844	1,689.2	65	78.2	

Assay Class: High Sensitivity DNA Assay
 Data Path: C:\...ents and Settings\Bioanalyzer\2012-04-09\2012-04-09_007.xad

Created: 4/9/2012 3:41:07 PM
 Modified: 4/9/2012 4:25:56 PM

Electropherogram Summary Continued ...



Overall Results for sample 11 : CMW21 500bp 1:20

Number of peaks found: 34 Corr. Area 1: 1,189.5
 Noise: 0.6

Peak table for sample 11 : CMW21 500bp 1:20


Peak	Size [bp]	Conc. [pg/μl]	Molarity [pmol/l]	Observations
1	35	125.00	5,411.3	Lower Marker
2	42	48,070.69	1,738,378.6	
3	373	225.58	915.3	
4	419	258.95	937.5	
5	426	205.17	729.4	
6	448	303.61	1,027.5	
7	476	341.88	1,088.0	
8	493	346.20	1,064.0	
9	513	296.01	874.0	
10	533	370.80	1,054.1	
11	572	330.78	876.5	
12	586	352.92	912.5	
13	630	1,136.42	2,732.5	
14	656	771.14	1,781.2	
15	697	1,545.29	3,360.6	
16	766	834.06	1,650.8	
17	879	2,145.47	3,697.0	
18	960	1,422.95	2,246.8	
19	1,006	1,401.59	2,110.8	
20	1,170	1,414.62	1,832.6	
21	1,235	1,373.46	1,685.0	
22	1,359	1,231.25	1,372.4	
23	1,451	1,096.21	1,144.8	
24	1,614	1,200.83	1,127.0	
25	1,856	2,175.48	1,775.6	
26	2,027	1,668.84	1,247.3	

Assay Class: High Sensitivity DNA Assay
 Data Path: C:\...ents and Settings\Bioanalyzer\2012-04-09\2012-04-09_007.xad


Created: 4/9/2012 3:41:07 PM
 Modified: 4/9/2012 4:25:56 PM

Electropherogram Summary Continued ...

... Peak table for sample 11 : CMW21 500bp 1:20

Peak	Size [bp]	Conc. [pg/μl]	Molarity [pmol/l]	Observations
27	2,438	1,590.58	988.6	
28	2,650	1,039.14	594.2	
29	2,809	1,146.13	618.3	
30	3,219	1,174.69	553.0	
31	3,719	1,169.92	476.6	
32	5,188	2,604.84	760.8	
33	5,588	3,140.90	851.6	
34	7,675	628.77	124.1	
35	9,389	104.42	16.9	
36	 10,380	75.00	10.9	Upper Marker

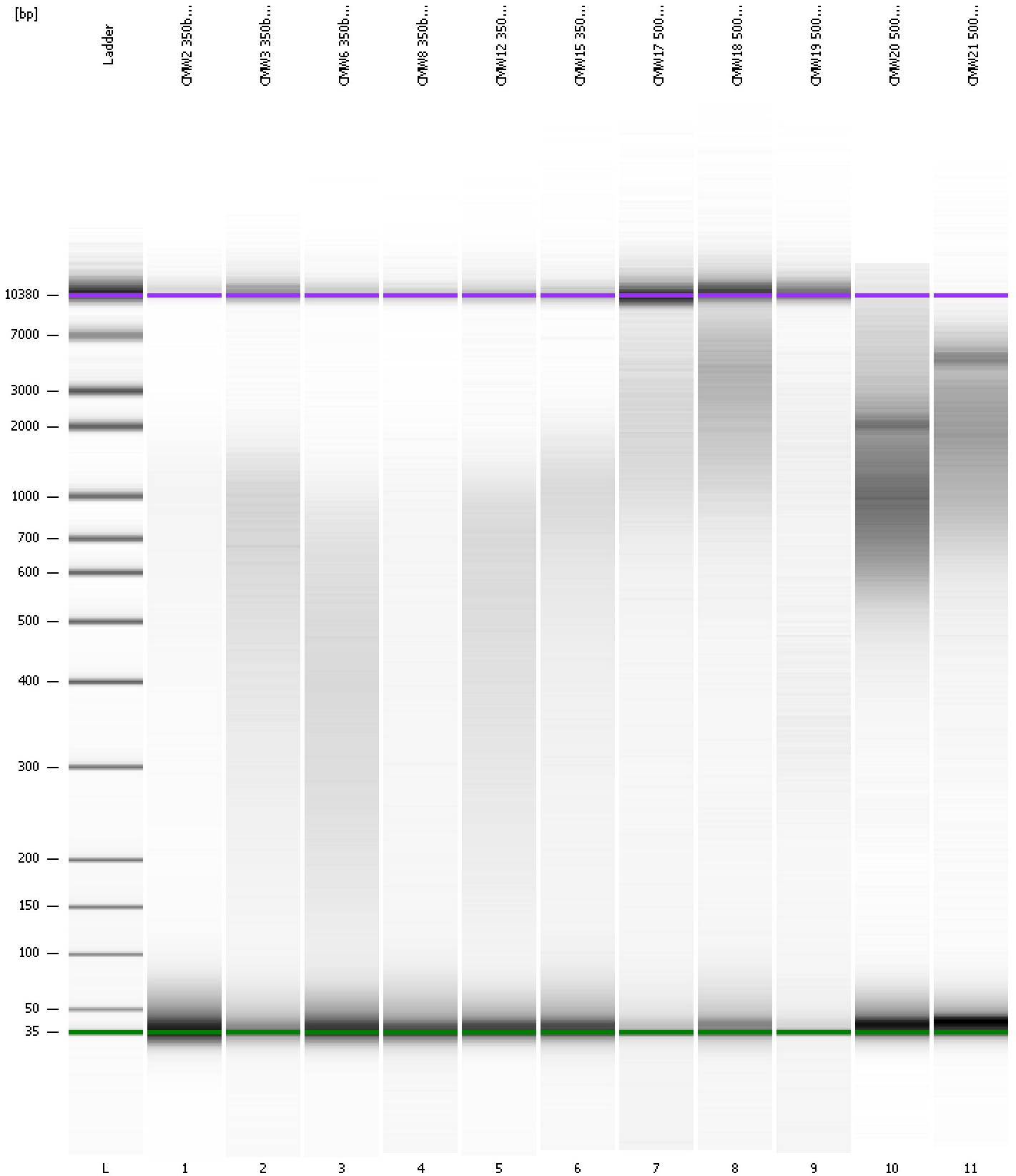
Region table for sample 11 : CMW21 500bp 1:20

From [bp]	Molarity [pmol/l]	Average Size [bp]	Conc. [pg/μl]	To [bp]	Corr. Area	% of Total	Size distribution in CV [%]	Color
465	47,608.2	2,362	40,940.28	7,231	1,189.5	56	73.0	

Assay Class: High Sensitivity DNA Assay
Data Path: C:\...ents and Settings\Bioanalyzer\2012-04-09\2012-04-09_007.xad

Created: 4/9/2012 3:41:07 PM
Modified: 4/9/2012 4:25:56 PM

Gel Image



Assay Class: High Sensitivity DNA Assay Created: 4/9/2012 3:41:07 PM
 Data Path: C:\...ents and Settings\Bioanalyzer\2012-04-09\2012-04-09_007.xad Modified: 4/9/2012 4:25:56 PM

Run Logbook

Description	Number	Source	Category	Sub Category	Time	Time Zone	User	Host
Run ended on port 1 (Number of wells acquired: 12)		Instrument	Run		4/9/2012 4:22:26 PM	(GMT --07:00) Pacific Standard Time	UC Davis	D8XSMGH1
Run started on port 1 (File: C:\Documents and Settings\Bioanalyzer\2012-04-09\2012-04-09_007.xad)		Instrument	Run		4/9/2012 3:41:12 PM	(GMT --07:00) Pacific Standard Time	UC Davis	D8XSMGH1
Product Number : G2938B		Instrument	Run		4/9/2012 3:41:12 PM	(GMT --07:00) Pacific Standard Time	UC Davis	D8XSMGH1
Name :		Instrument	Run		4/9/2012 3:41:12 PM	(GMT --07:00) Pacific Standard Time	UC Davis	D8XSMGH1
Vendor : Agilent Technologies		Instrument	Run		4/9/2012 3:41:12 PM	(GMT --07:00) Pacific Standard Time	UC Davis	D8XSMGH1
Serial# : DE13701086		Instrument	Run		4/9/2012 3:41:12 PM	(GMT --07:00) Pacific Standard Time	UC Davis	D8XSMGH1
Firmware : C.01.069		Instrument	Run		4/9/2012 3:41:12 PM	(GMT --07:00) Pacific Standard Time	UC Davis	D8XSMGH1
Cartridge : Electrode		Instrument	Run		4/9/2012 3:41:12 PM	(GMT --07:00) Pacific Standard Time	UC Davis	D8XSMGH1