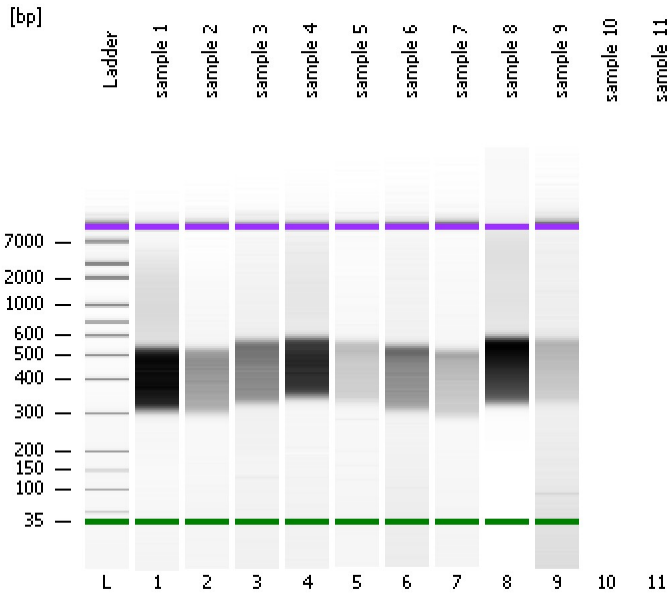


Assay Class: High Sensitivity DNA Assay
Data Path: C:\...ents and Settings\Bioanalyzer\2012-04-10\2012-04-10_001.xad

Created: 4/10/2012 9:22:33 AM
Modified: 4/10/2012 9:58:38 AM

Electrophoresis File Run Summary



Instrument Information:

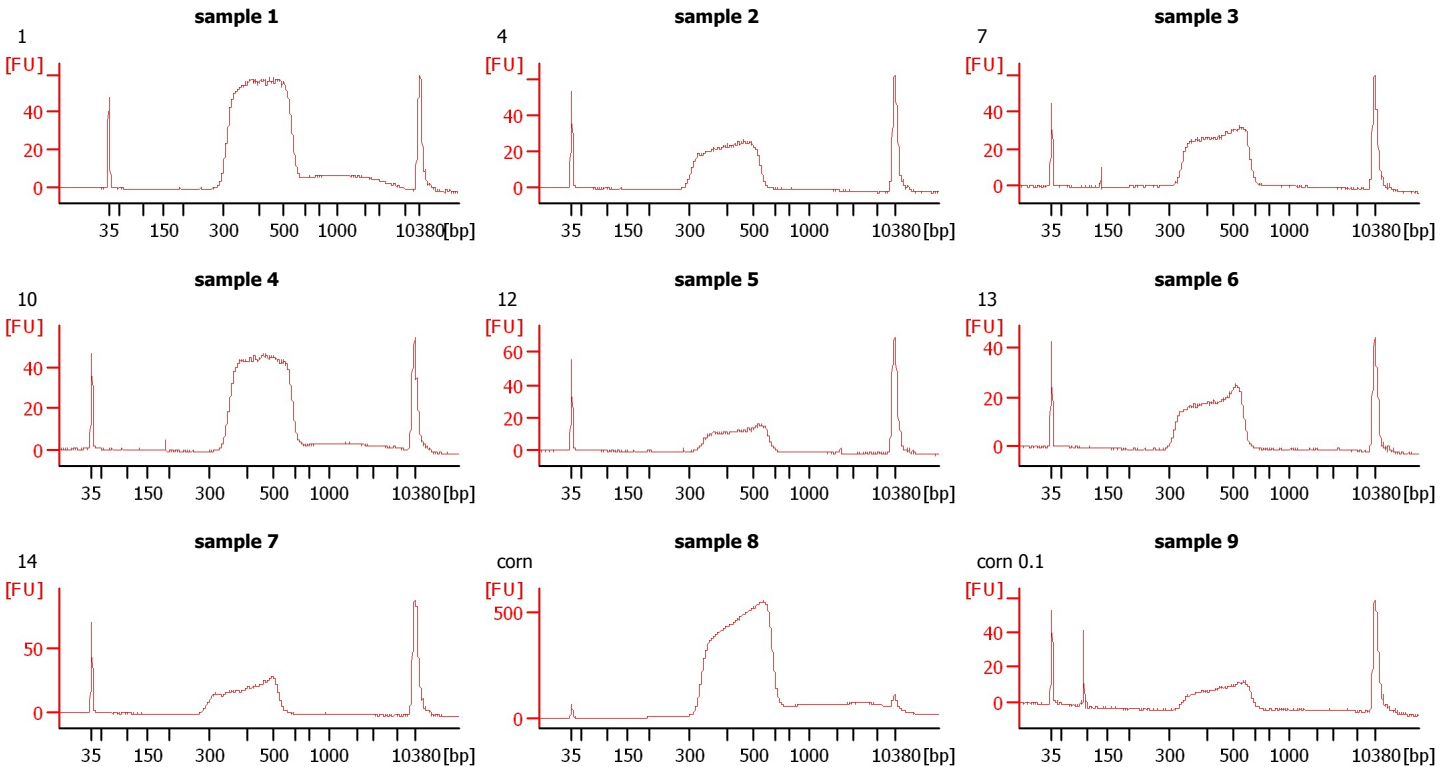
Instrument Name: DE13701086 Firmware: C.01.069
Serial#: DE13701086 Type: G2938B

Assay Information:

Assay Origin Path: C:\Program Files\Agilent\2100 bioanalyzer\2100 expert\assays\dsDNA\High Sensitivity DNA.xsy
Assay Class: High Sensitivity DNA Assay
Version: 1.03
Assay Comments: Copyright © 2003-2010 Agilent Technologies

Chip Information:

Chip Lot #:
Reagent Kit Lot #:
Chip Comments:



Assay Class: High Sensitivity DNA Assay
 Data Path: C:\...ents and Settings\Bioanalyzer\2012-04-10\2012-04-10_001.xad

Created: 4/10/2012 9:22:33 AM
 Modified: 4/10/2012 9:58:38 AM

Electrophoresis File Run Summary (Chip Summary)

Sample Name	Sample Comment	Rest. Digest	Status	Observation	Result Label	Result Color
sample 1	1	<input type="checkbox"/>	✓			
sample 2	4	<input type="checkbox"/>	✓			
sample 3	7	<input type="checkbox"/>	✓			
sample 4	10	<input type="checkbox"/>	✓			
sample 5	12	<input type="checkbox"/>	✓			
sample 6	13	<input type="checkbox"/>	✓			
sample 7	14	<input type="checkbox"/>	✓			
sample 8	corn	<input type="checkbox"/>	✓			
sample 9	corn 0.1	<input type="checkbox"/>	✓			
sample 10		<input type="checkbox"/>				
sample 11		<input type="checkbox"/>				
Ladder		<input type="checkbox"/>	✓			

Chip Lot #

Reagent Kit Lot #

Chip Comments :

Assay Class: High Sensitivity DNA Assay
Data Path: C:\...ents and Settings\Bioanalyzer\2012-04-10\2012-04-10_001.xad

Created: 4/10/2012 9:22:33 AM
Modified: 4/10/2012 9:58:38 AM

Electrophoresis Assay Details

General Analysis Settings

Number of Available Sample and Ladder Wells (Max.) : 12
Minimum Visible Range [s] : 32
Maximum Visible Range [s] : 138
Start Analysis Time Range [s] : 33
End Analysis Time Range [s] : 137.5
Ladder Concentration [pg/μl] : 1950
Uses Standard Area for Ladder Fragments
Lower Marker Concentration [pg/μl] : 125
Upper Marker Concentration [pg/μl] : 75
Used Upper Marker for Quantitation
Standard Curve Fit is Point to Point
Show Data Aligned to Lower and Upper Marker

Integrator Settings

Integration Start Time [s] : 33.05
Integration End Time [s] : 137
Slope Threshold : 0.8
Height Threshold [FU] : 5
Area Threshold : 0.1
Width Threshold [s] : 0.6
Baseline Plateau [s] : 0.5

Filter Settings

Filter Width [s] : 0.5
Polynomial Order : 4

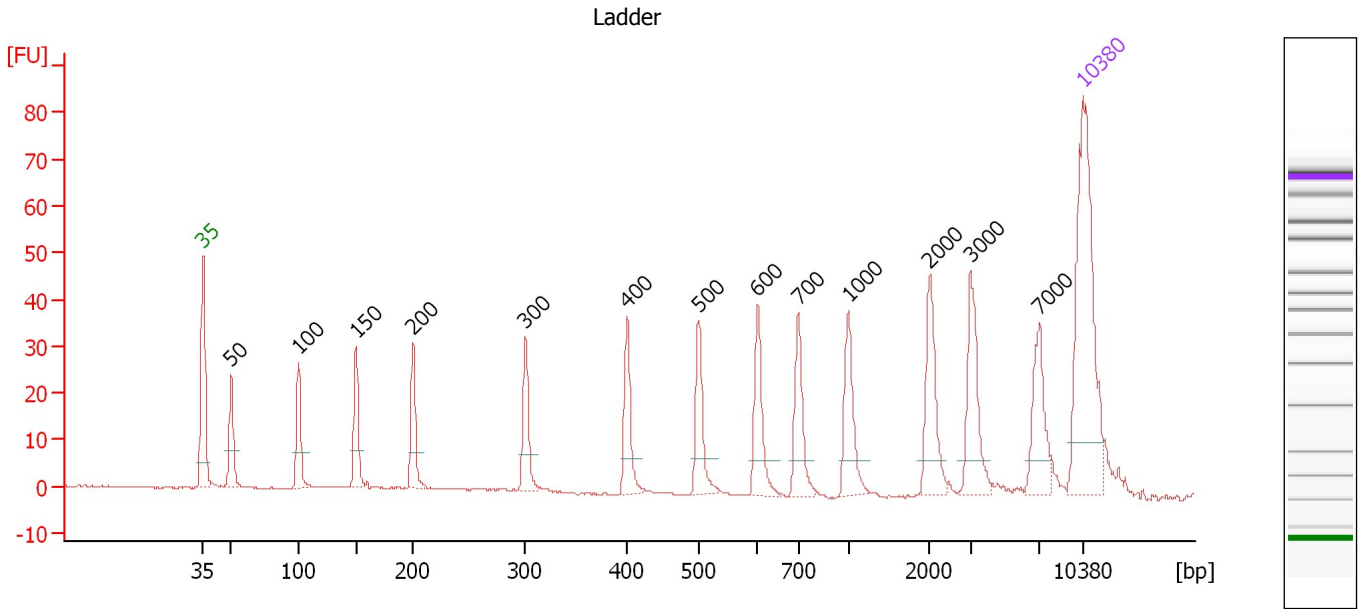
Ladder

Ladder Peak	Size	Area
1	35	160
2	50	210
3	100	208
4	150	221
5	200	242
6	300	270
7	400	305
8	500	306
9	600	336
10	700	321
11	1000	366
12	2000	413
13	3000	411
14	7000	400
15	10380	214

Assay Class: High Sensitivity DNA Assay
 Data Path: C:\...ents and Settings\Bioanalyzer\2012-04-10\2012-04-10_001.xad

Created: 4/10/2012 9:22:33 AM
 Modified: 4/10/2012 9:58:38 AM

Electropherogram Summary



Overall Results for Ladder

Noise: 0.1

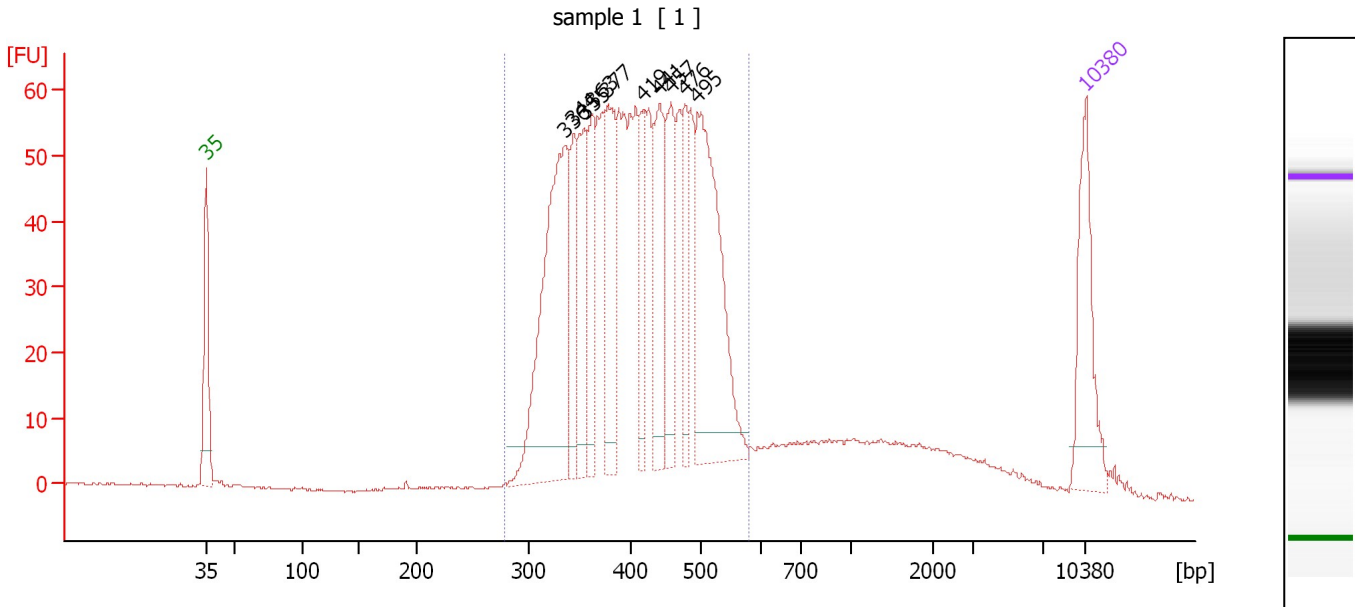
Peak table for Ladder

Peak	Size [bp]	Conc. [pg/μl]	Molarity [pmol/l]	Observations
1	35	125.00	5,411.3	Lower Marker
2	50	150.00	4,545.5	Ladder Peak
3	100	150.00	2,272.7	Ladder Peak
4	150	150.00	1,515.2	Ladder Peak
5	200	150.00	1,136.4	Ladder Peak
6	300	150.00	757.6	Ladder Peak
7	400	150.00	568.2	Ladder Peak
8	500	150.00	454.5	Ladder Peak
9	600	150.00	378.8	Ladder Peak
10	700	150.00	324.7	Ladder Peak
11	1,000	150.00	227.3	Ladder Peak
12	2,000	150.00	113.6	Ladder Peak
13	3,000	150.00	75.8	Ladder Peak
14	7,000	150.00	32.5	Ladder Peak
15	10,380	75.00	10.9	Upper Marker

Assay Class: High Sensitivity DNA Assay
 Data Path: C:\...ents and Settings\Bioanalyzer\2012-04-10\2012-04-10_001.xad

Created: 4/10/2012 9:22:33 AM
 Modified: 4/10/2012 9:58:38 AM

Electropherogram Summary Continued ...



Overall Results for sample 1 : sample 1

Number of peaks found: 10 Corr. Area 1: 1,160.6
 Noise: 0.2

Peak table for sample 1 : sample 1

Peak	Size [bp]	Conc. [pg/μl]	Molarity [pmol/l]	Observations
1	35	125.00	5,411.3	Lower Marker
2	336	303.89	1,371.2	
3	344	74.35	327.3	
4	355	95.06	406.0	
5	363	79.70	333.0	
6	377	121.72	488.7	
7	419	63.26	228.9	
8	441	108.70	373.4	
9	457	88.85	294.8	
10	476	60.20	191.6	
11	495	242.95	744.0	
12	10,380	75.00	10.9	Upper Marker

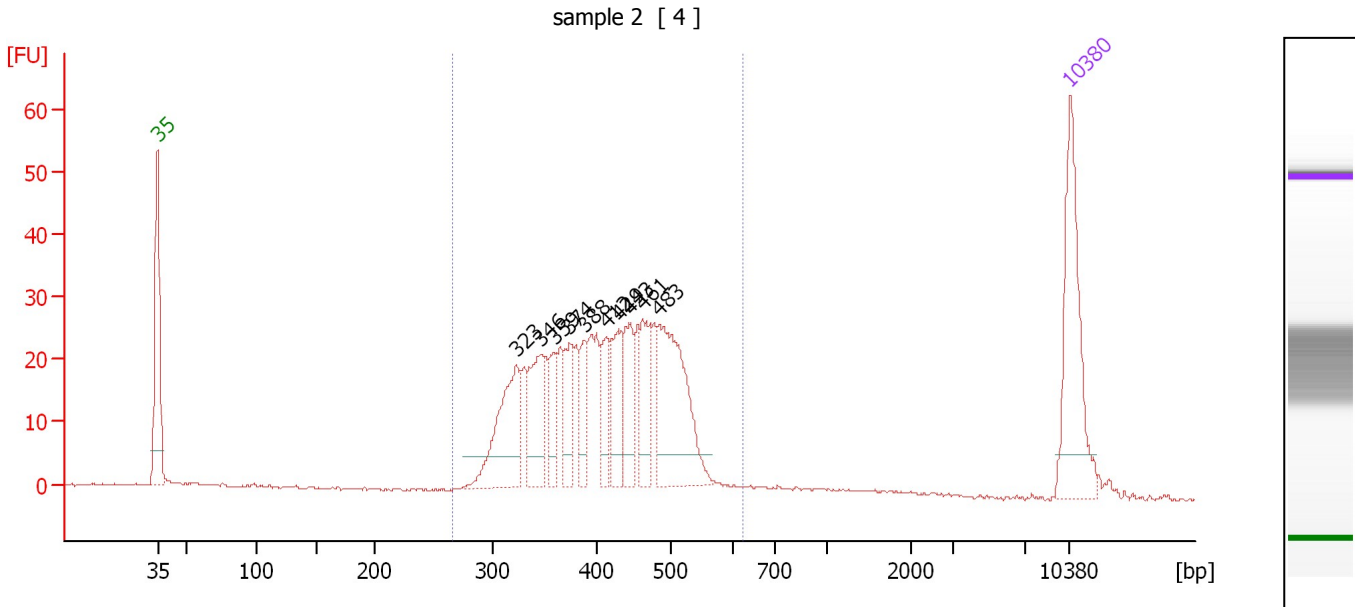
Region table for sample 1 : sample 1

From [bp]	Molarity [pmol/l]	Average Size [bp]	Conc. [pg/μl]	To [bp]	Corr. Area	% of Total	Size distribution in CV [%]	Color
279	6,891.8	415	1,824.31	579	1,160.6	87	16.3	Blue

Assay Class: High Sensitivity DNA Assay
 Data Path: C:\...ents and Settings\Bioanalyzer\2012-04-10\2012-04-10_001.xad

Created: 4/10/2012 9:22:33 AM
 Modified: 4/10/2012 9:58:38 AM

Electropherogram Summary Continued ...



Overall Results for sample 2 : sample 2

Number of peaks found: 10 Corr. Area 1: 500.2
 Noise: 0.1

Peak table for sample 2 : sample 2

Peak	Size [bp]	Conc. [pg/μl]	Molarity [pmol/l]	Observations
1	35	125.00	5,411.3	Lower Marker
2	323	85.74	401.6	
3	346	54.17	237.3	
4	359	24.93	105.3	
5	374	35.00	141.9	
6	388	24.97	97.5	
7	412	30.27	111.3	
8	429	38.79	137.0	
9	443	41.95	143.4	
10	461	38.41	126.1	
11	483	115.20	361.0	
12	10,380	75.00	10.9	Upper Marker

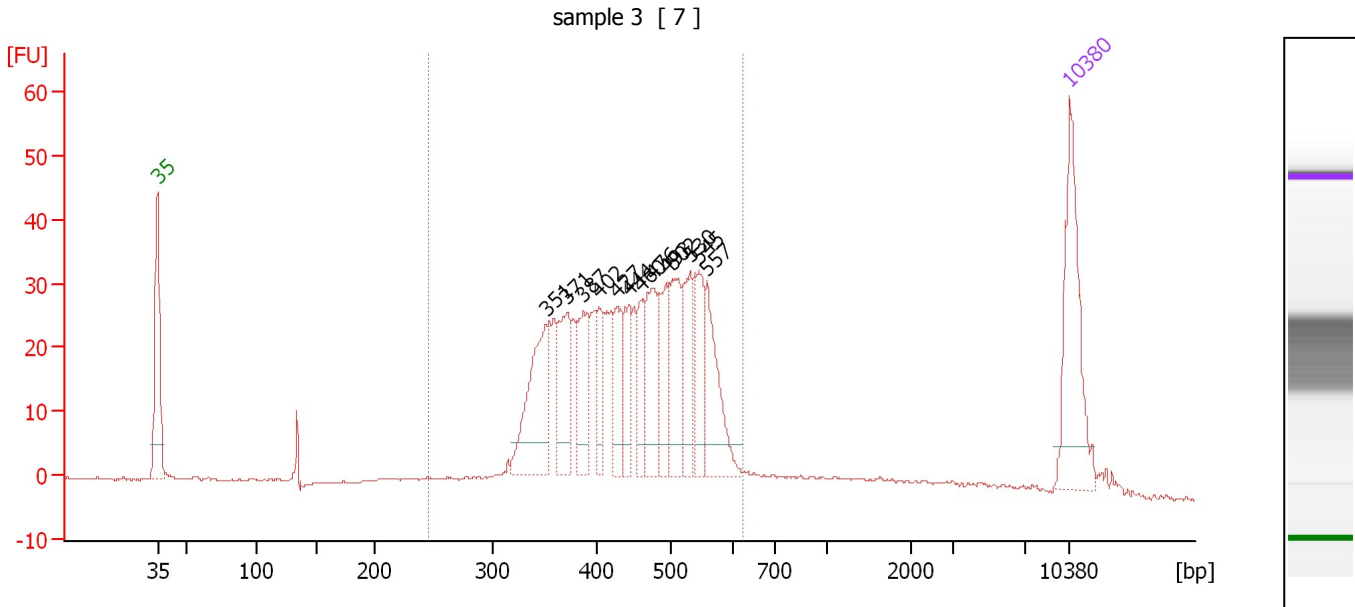
Region table for sample 2 : sample 2

From [bp]	Molarity [pmol/l]	Average Size [bp]	Conc. [pg/μl]	To [bp]	Corr. Area	% of Total	Size distribution in CV [%]	Color
267	2,688.0	414	707.94	626	500.2	94	16.7	Blue

Assay Class: High Sensitivity DNA Assay
 Data Path: C:\...ents and Settings\Bioanalyzer\2012-04-10\2012-04-10_001.xad

Created: 4/10/2012 9:22:33 AM
 Modified: 4/10/2012 9:58:38 AM

Electropherogram Summary Continued ...



Overall Results for sample 3 : sample 3

Number of peaks found: 13 Corr. Area 1: 597.4
 Noise: 0.2

Peak table for sample 3 : sample 3

Peak	Size [bp]	Conc. [pg/μl]	Molarity [pmol/l]	Observations
1	35	125.00	5,411.3	Lower Marker
2	351	96.99	418.2	
3	371	58.76	240.0	
4	387	43.76	171.4	
5	402	30.06	113.3	
6	427	36.36	129.1	
7	444	35.90	122.6	
8	460	30.07	99.1	
9	476	55.60	177.0	
10	493	41.23	126.8	
11	502	57.65	174.1	
12	530	48.53	138.6	
13	545	43.46	120.8	
14	557	61.62	167.5	
15	10,380	75.00	10.9	Upper Marker

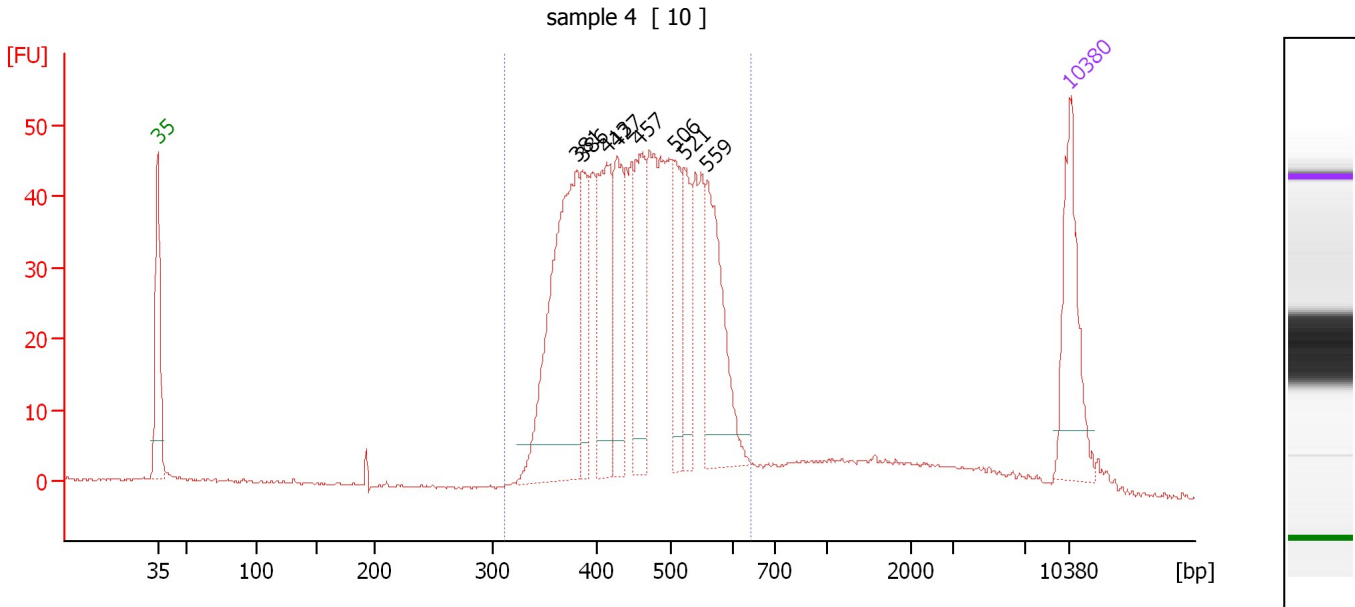
Region table for sample 3 : sample 3

From [bp]	Molarity [pmol/l]	Average Size [bp]	Conc. [pg/μl]	To [bp]	Corr. Area	% of Total	Size distribution in CV [%]	Color
245	3,169.8	446	892.66	622	597.4	89	17.3	Blue

Assay Class: High Sensitivity DNA Assay
 Data Path: C:\...ents and Settings\Bioanalyzer\2012-04-10\2012-04-10_001.xad

Created: 4/10/2012 9:22:33 AM
 Modified: 4/10/2012 9:58:38 AM

Electropherogram Summary Continued ...



Overall Results for sample 4 : sample 4

Number of peaks found: 8 Corr. Area 1: 829.0
 Noise: 0.2

Peak table for sample 4 : sample 4

Peak	Size [bp]	Conc. [pg/μl]	Molarity [pmol/l]	Observations
1	35	125.00	5,411.3	Lower Marker
2	381	262.97	1,045.1	
3	386	62.85	246.6	
4	413	121.25	445.3	
5	427	86.71	307.9	
6	457	90.38	299.5	
7	506	67.73	202.7	
8	521	56.36	163.8	
9	559	120.43	326.3	
10	10,380	75.00	10.9	Upper Marker

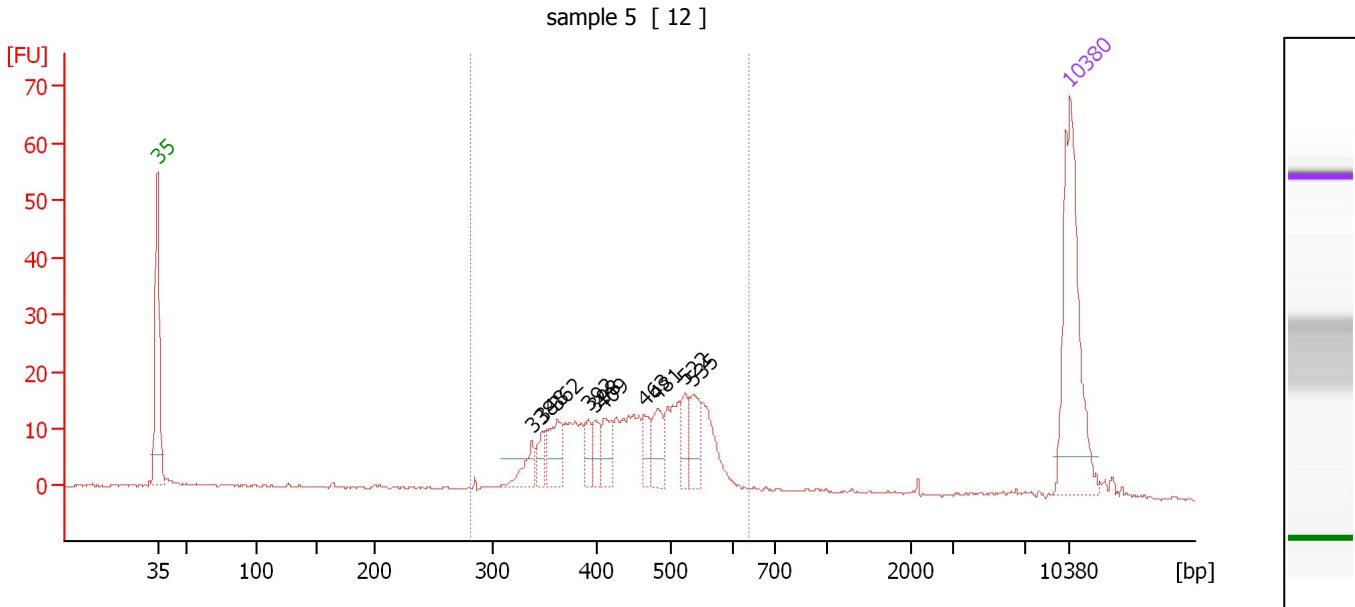
Region table for sample 4 : sample 4

From [bp]	Molarity [pmol/l]	Average Size [bp]	Conc. [pg/μl]	To [bp]	Corr. Area	% of Total	Size distribution in CV [%]	Color
311	4,682.4	459	1,371.70	643	829.0	87	15.7	Blue

Assay Class: High Sensitivity DNA Assay
 Data Path: C:\...ents and Settings\Bioanalyzer\2012-04-10\2012-04-10_001.xad

Created: 4/10/2012 9:22:33 AM
 Modified: 4/10/2012 9:58:38 AM

Electropherogram Summary Continued ...



Overall Results for sample 5 : sample 5

Number of peaks found: 10 Corr. Area 1: 262.1
 Noise: 0.2

Peak table for sample 5 : sample 5

Peak	Size [bp]	Conc. [pg/μl]	Molarity [pmol/l]	Observations
1	35	125.00	5,411.3	Lower Marker
2	338	14.33	64.2	
3	348	11.51	50.1	
4	362	26.15	109.3	
5	392	11.21	43.3	
6	398	11.11	42.3	
7	409	17.28	64.1	
8	463	13.22	43.3	
9	481	19.21	60.5	
10	522	14.88	43.2	
11	535	19.69	55.7	
12	10,380	75.00	10.9	Upper Marker

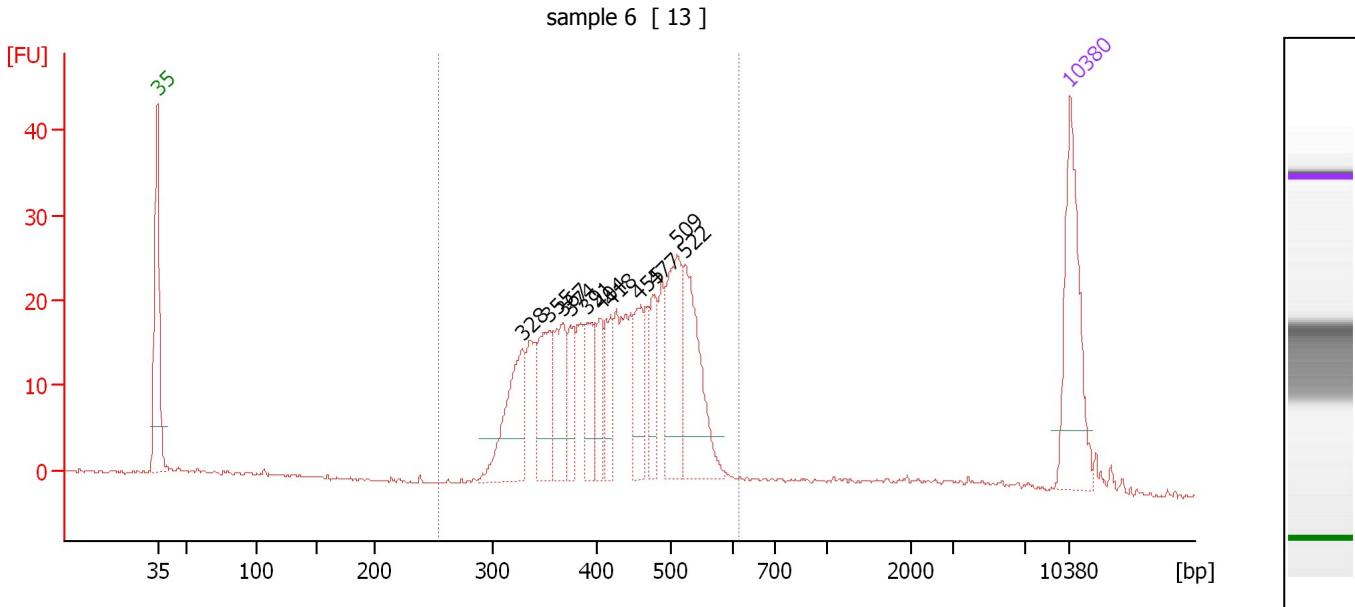
Region table for sample 5 : sample 5

From [bp]	Molarity [pmol/l]	Average Size [bp]	Conc. [pg/μl]	To [bp]	Corr. Area	% of Total	Size distribution in CV [%]	Color
281	1,115.2	450	318.33	637	262.1	88	16.7	Blue

Assay Class: High Sensitivity DNA Assay
 Data Path: C:\...ents and Settings\Bioanalyzer\2012-04-10\2012-04-10_001.xad

Created: 4/10/2012 9:22:33 AM
 Modified: 4/10/2012 9:58:38 AM

Electropherogram Summary Continued ...



Overall Results for sample 6 : sample 6

Number of peaks found: 11 Corr. Area 1: 410.1
 Noise: 0.2

Peak table for sample 6 : sample 6

Peak	Size [bp]	Conc. [pg/μl]	Molarity [pmol/l]	Observations
1	35	125.00	5,411.3	Lower Marker
2	328	84.22	388.6	
3	355	62.10	265.4	
4	367	52.83	218.1	
5	374	30.79	124.7	
6	391	37.56	145.5	
7	404	30.14	113.0	
8	418	32.41	117.5	
9	455	40.50	134.8	
10	477	34.67	110.2	
11	509	79.01	235.1	
12	522	90.83	263.7	
13	10,380	75.00	10.9	Upper Marker

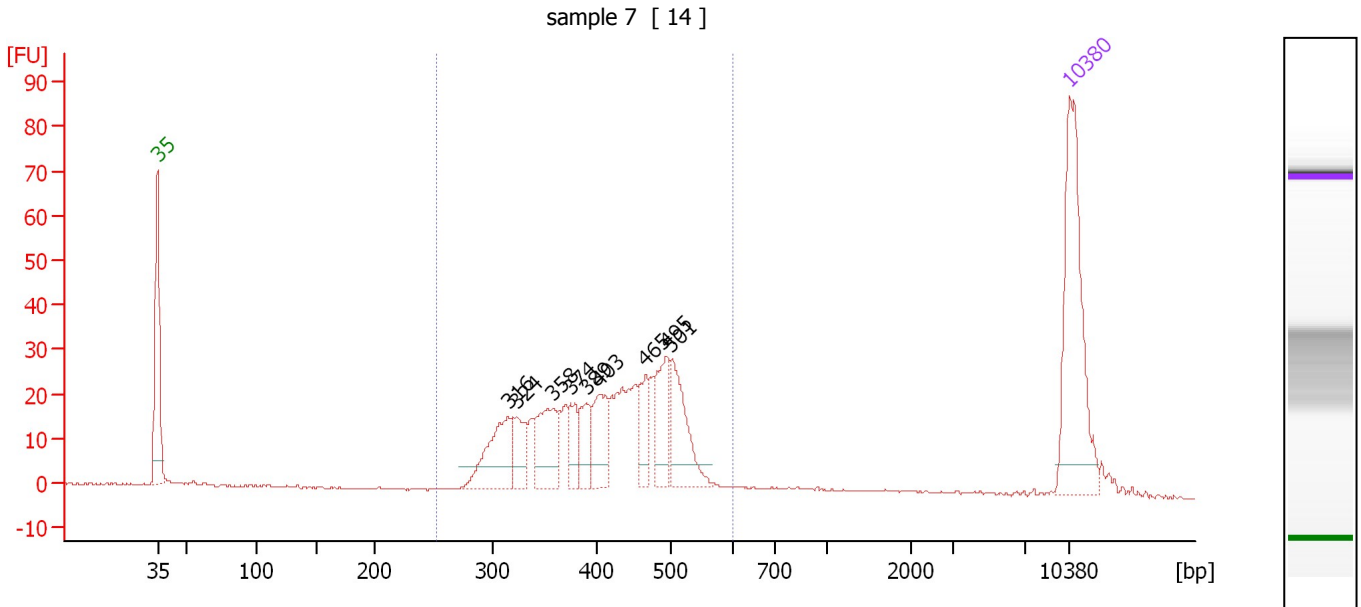
Region table for sample 6 : sample 6

From [bp]	Molarity [pmol/l]	Average Size [bp]	Conc. [pg/μl]	To [bp]	Corr. Area	% of Total	Size distribution in CV [%]	Color
254	3,045.7	430	832.39	616	410.1	93	16.8	Blue

Assay Class: High Sensitivity DNA Assay
 Data Path: C:\...ents and Settings\Bioanalyzer\2012-04-10\2012-04-10_001.xad

Created: 4/10/2012 9:22:33 AM
 Modified: 4/10/2012 9:58:38 AM

Electropherogram Summary Continued ...



Overall Results for sample 7 : sample 7

Number of peaks found: 9 Corr. Area 1: 452.0
 Noise: 0.2

Peak table for sample 7 : sample 7

Peak	Size [bp]	Conc. [pg/μl]	Molarity [pmol/l]	Observations
1	35	125.00	5,411.3	Lower Marker
2	316	47.57	228.1	
3	324	22.55	105.4	
4	358	42.12	178.1	
5	374	17.69	71.6	
6	389	20.16	78.4	
7	403	31.19	117.3	
8	465	20.74	67.5	
9	495	35.11	107.5	
10	501	42.92	129.9	
11	10,380	75.00	10.9	Upper Marker

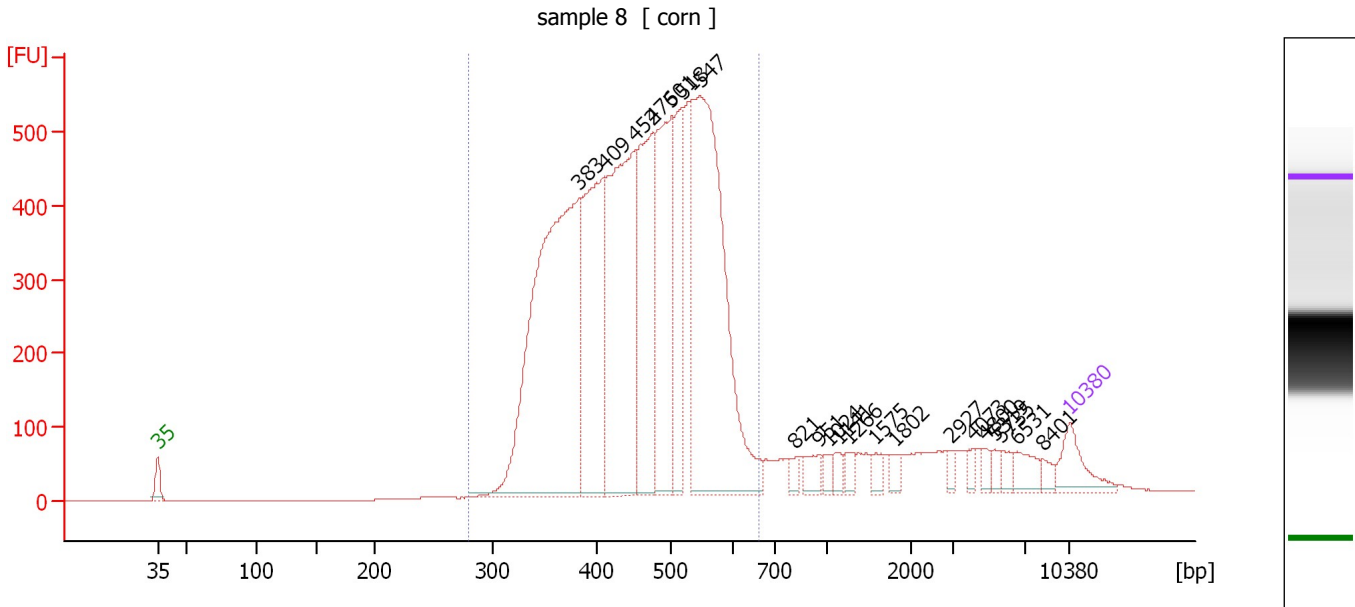
Region table for sample 7 : sample 7

From [bp]	Molarity [pmol/l]	Average Size [bp]	Conc. [pg/μl]	To [bp]	Corr. Area	% of Total	Size distribution in CV [%]	Color
253	1,512.7	415	397.25	600	452.0	90	17.2	Blue

Assay Class: High Sensitivity DNA Assay
 Data Path: C:\...ents and Settings\Bioanalyzer\2012-04-10\2012-04-10_001.xad

Created: 4/10/2012 9:22:33 AM
 Modified: 4/10/2012 9:58:38 AM

Electropherogram Summary Continued ...



Overall Results for sample 8 : sample 8

Number of peaks found: 21 Corr. Area 1: 9,263.8
 Noise: 0.3

Peak table for sample 8 : sample 8

Peak	Size [bp]	Conc. [pg/μl]	Molarity [pmol/l]	Observations
1	35	125.00	5,411.3	Lower Marker
2	383	1,434.38	5,676.1	
3	409	603.77	2,236.4	
4	452	861.27	2,890.0	
5	476	533.32	1,698.7	
6	501	546.76	1,654.0	
7	518	294.47	861.4	
8	547	1,164.85	3,225.9	
9	821	24.72	45.6	
10	951	41.03	65.3	
11	1,024	22.80	33.7	
12	1,141	25.58	34.0	
13	1,266	23.70	28.4	
14	1,575	24.34	23.4	
15	1,802	21.75	18.3	
16	2,927	16.00	8.3	
17	4,073	18.72	7.0	
18	4,800	17.45	5.5	
19	5,319	19.38	5.5	
20	5,735	23.36	6.2	
21	6,531	47.50	11.0	
22	8,401	18.38	3.3	
23	10,380	75.00	10.9	Upper Marker

Assay Class: High Sensitivity DNA Assay
Data Path: C:\...ents and Settings\Bioanalyzer\2012-04-10\2012-04-10_001.xad

Created: 4/10/2012 9:22:33 AM
Modified: 4/10/2012 9:58:38 AM

Electropherogram Summary Continued ...

... Region table for sample 8 :

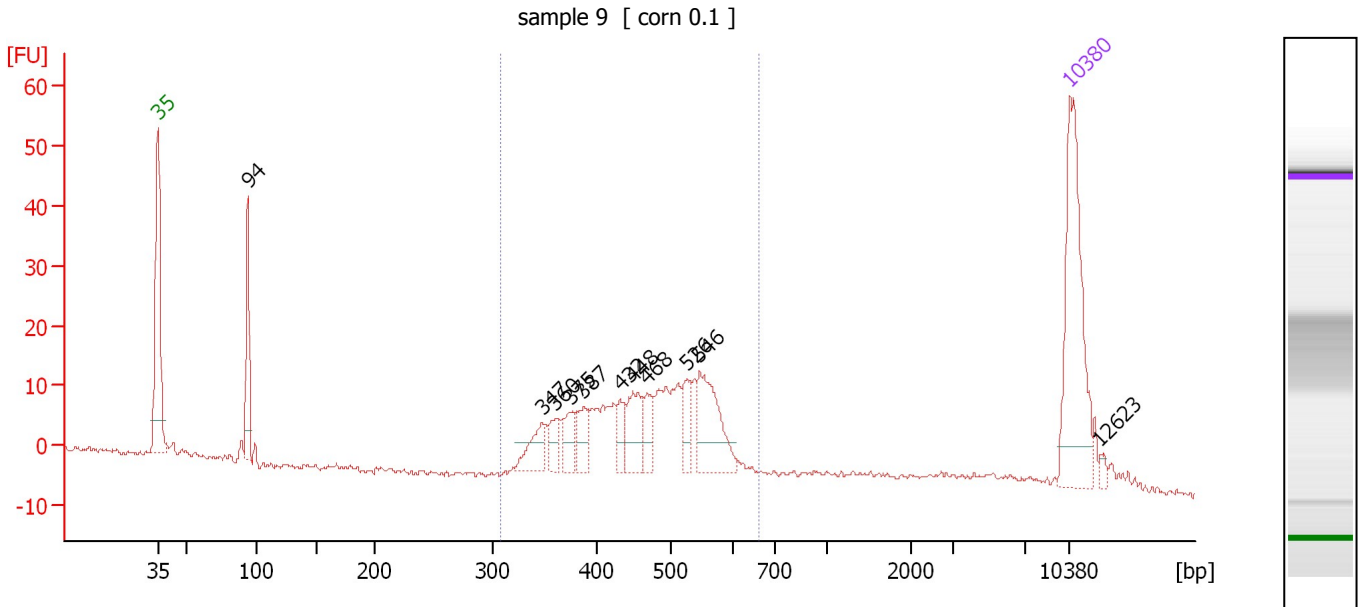
sample 8

From [bp]	Molarity [pmol/l]	Average Size [bp]	Conc. [pg/μl]	To [bp]	Corr. Area	% of Total	Size distribution in CV [%]	Color
280	19,835.2	458	5,754.79	663	9,263.8	88	17.3	■

Assay Class: High Sensitivity DNA Assay
 Data Path: C:\...ents and Settings\Bioanalyzer\2012-04-10\2012-04-10_001.xad

Created: 4/10/2012 9:22:33 AM
 Modified: 4/10/2012 9:58:38 AM

Electropherogram Summary Continued ...



Overall Results for sample 9 : sample 9

Number of peaks found: 11 Corr. Area 1: 233.4
 Noise: 0.5

Peak table for sample 9 : sample 9

Peak	Size [bp]	Conc. [pg/μl]	Molarity [pmol/l]	Observations
1	35	125.00	5,411.3	Lower Marker
2	94	42.00	678.8	
3	347	20.54	89.6	
4	360	14.10	59.3	
5	375	14.46	58.4	
6	387	16.05	62.8	
7	432	12.62	44.3	
8	448	26.89	90.9	
9	468	17.24	55.8	
10	526	13.84	39.8	
11	546	48.58	134.7	
12	10,380	75.00	10.9	Upper Marker
13	12,623	0.00	0.0	

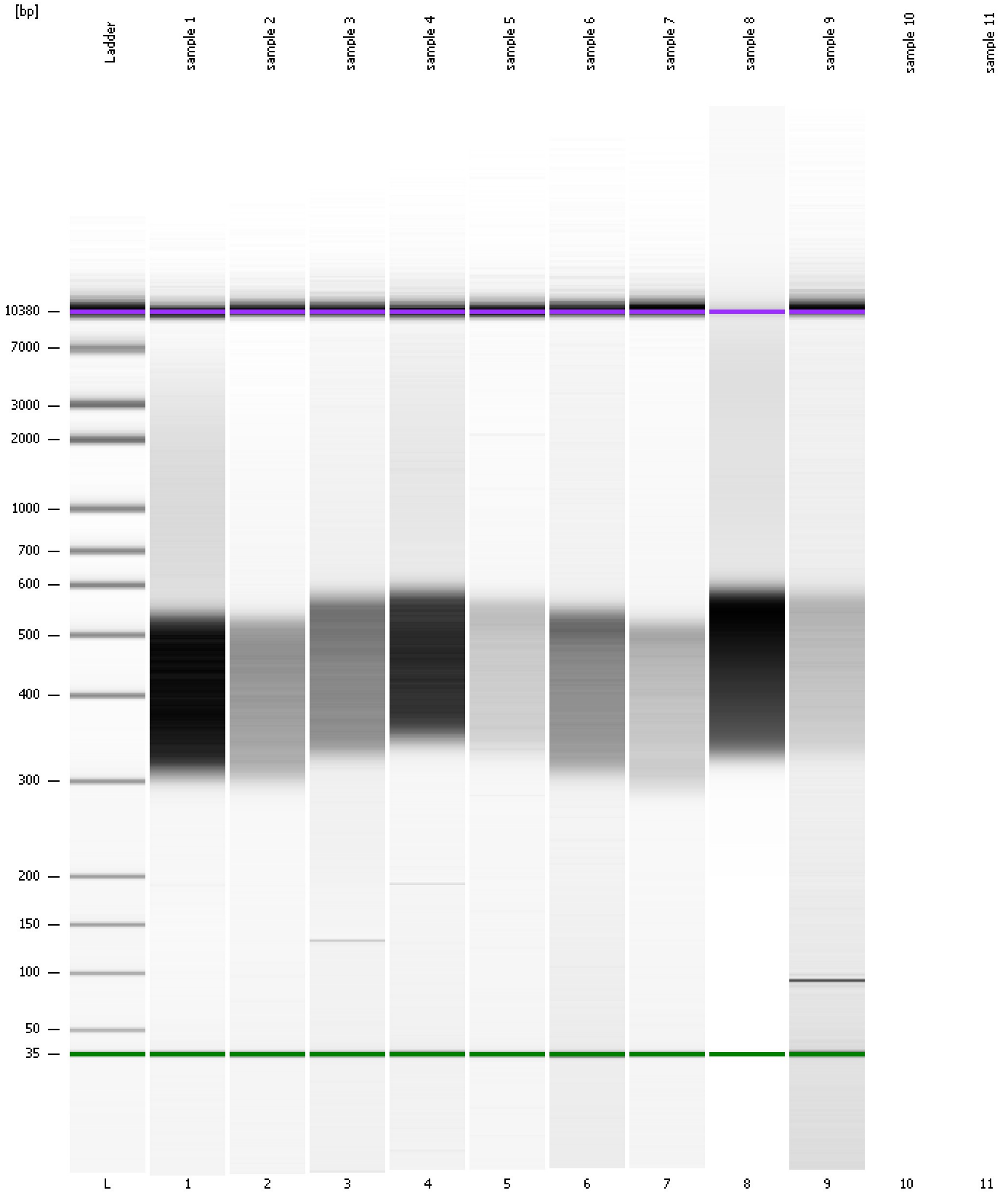
Region table for sample 9 : sample 9

From [bp]	Molarity [pmol/l]	Average Size [bp]	Conc. [pg/μl]	To [bp]	Corr. Area	% of Total	Size distribution in CV [%]	Color
307	980.6	466	290.89	662	233.4	76	16.2	Blue

Assay Class: High Sensitivity DNA Assay
Data Path: C:\...ents and Settings\Bioanalyzer\2012-04-10\2012-04-10_001.xad

Created: 4/10/2012 9:22:33 AM
Modified: 4/10/2012 9:58:38 AM

Gel Image



Assay Class: High Sensitivity DNA Assay
Data Path: C:\...ents and Settings\Bioanalyzer\2012-04-10\2012-04-10_001.xad

Created: 4/10/2012 9:22:33 AM
Modified: 4/10/2012 9:58:38 AM

Invalid Samples

Sample 10 has not been run, no results available.

Sample 11 has not been run, no results available.

Assay Class: High Sensitivity DNA Assay
 Data Path: C:\...ents and Settings\Bioanalyzer\2012-04-10\2012-04-10_001.xad

Created: 4/10/2012 9:22:33 AM
 Modified: 4/10/2012 9:58:38 AM

Run Logbook

Description	Number	Source	Category	Sub Category	Time	Time Zone	User	Host
Run ended on port 1 (Number of wells acquired: 10)		Instrument	Run		4/10/2012 9:58:08 AM	(GMT --07:00) Pacific Standard Time	UC Davis	D8XSMGH1
Run started on port 1 (File: C:\Documents and Settings\Bioanalyzer\2012-04-10\2012-04-10_001.xad)		Instrument	Run		4/10/2012 9:22:38 AM	(GMT --07:00) Pacific Standard Time	UC Davis	D8XSMGH1
Product Number : G2938B		Instrument	Run		4/10/2012 9:22:38 AM	(GMT --07:00) Pacific Standard Time	UC Davis	D8XSMGH1
Name :		Instrument	Run		4/10/2012 9:22:38 AM	(GMT --07:00) Pacific Standard Time	UC Davis	D8XSMGH1
Vendor : Agilent Technologies		Instrument	Run		4/10/2012 9:22:38 AM	(GMT --07:00) Pacific Standard Time	UC Davis	D8XSMGH1
Serial# : DE13701086		Instrument	Run		4/10/2012 9:22:38 AM	(GMT --07:00) Pacific Standard Time	UC Davis	D8XSMGH1
Firmware : C.01.069		Instrument	Run		4/10/2012 9:22:38 AM	(GMT --07:00) Pacific Standard Time	UC Davis	D8XSMGH1
Cartridge : Electrode		Instrument	Run		4/10/2012 9:22:38 AM	(GMT --07:00) Pacific Standard Time	UC Davis	D8XSMGH1