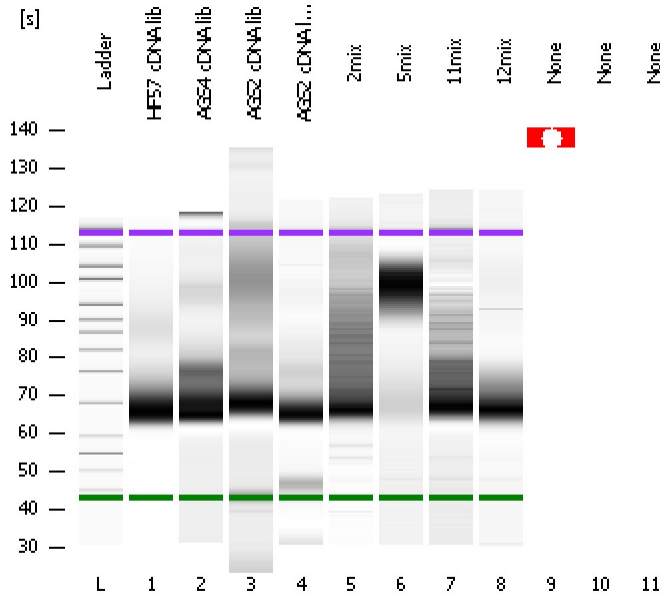


Assay Class: High Sensitivity DNA Assay
Data Path: C:\...ents and Settings\Bioanalyzer\2012-04-10\2012-04-10_002.xad

Created: 4/10/2012 10:13:08 AM
Modified: 4/10/2012 10:50:27 AM

Electrophoresis File Run Summary



Instrument Information:

Instrument Name: DE13701086 Firmware: C.01.069
Serial#: DE13701086 Type: G2938B

Assay Information:

Assay Origin Path: C:\Program Files\Agilent\2100 bioanalyzer\2100 expert\assays\dsDNA\High Sensitivity DNA.xsy
Assay Class: High Sensitivity DNA Assay
Version: 1.03
Assay Comments: Copyright © 2003-2010 Agilent Technologies

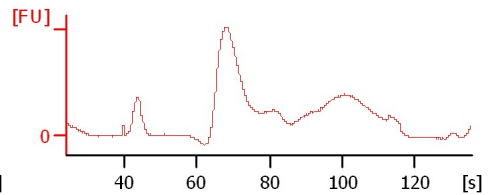
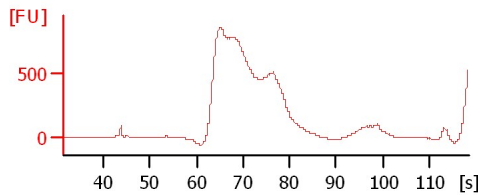
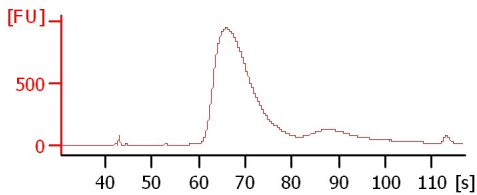
Chip Information:

Chip Lot #:
Reagent Kit Lot #:
Chip Comments:

HF57 cDNA lib

AGS4 cDNA lib

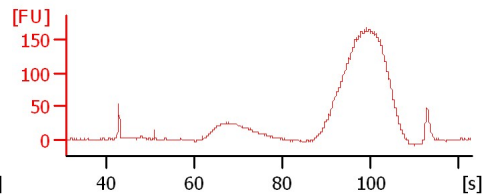
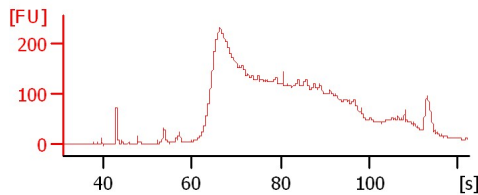
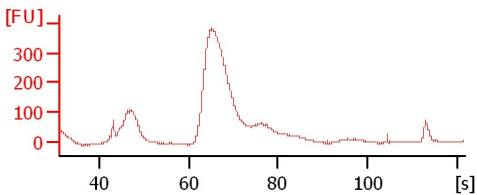
AGS2 cDNA lib



AGS2 cDNA lib (backup)

2mix

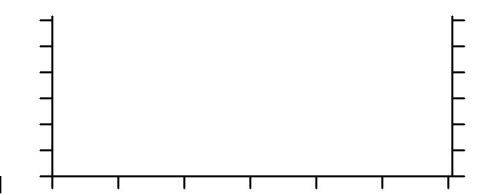
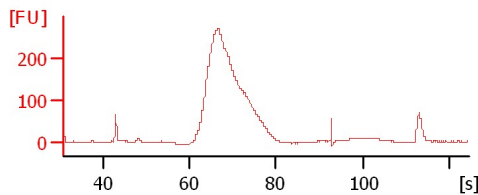
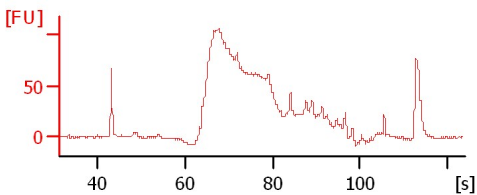
5mix



11mix

12mix

None



Assay Class: High Sensitivity DNA Assay
 Data Path: C:\...ents and Settings\Bioanalyzer\2012-04-10\2012-04-10_002.xad

Created: 4/10/2012 10:13:08 AM
 Modified: 4/10/2012 10:50:27 AM

Electrophoresis File Run Summary (Chip Summary)

Sample Name	Sample Comment	Rest. Digest	Status	Observation	Result Label	Result Color
HF57 cDNA lib		<input type="checkbox"/>	✓			
AGS4 cDNA lib		<input type="checkbox"/>	✓			
AGS2 cDNA lib		<input type="checkbox"/>	✓			
AGS2 cDNA lib (backup)		<input type="checkbox"/>	✓			
2mix		<input type="checkbox"/>	✓			
5mix		<input type="checkbox"/>	✓			
11mix		<input type="checkbox"/>	✓			
12mix		<input type="checkbox"/>	✓			
None		<input type="checkbox"/>	✗			
None		<input type="checkbox"/>	✗			
None		<input type="checkbox"/>	✗			
Ladder		<input type="checkbox"/>	✓			

Chip Lot #

Reagent Kit Lot #

Chip Comments :

Assay Class: High Sensitivity DNA Assay
Data Path: C:\...ents and Settings\Bioanalyzer\2012-04-10\2012-04-10_002.xad

Created: 4/10/2012 10:13:08 AM
Modified: 4/10/2012 10:50:27 AM

Electrophoresis Assay Details

General Analysis Settings

Number of Available Sample and Ladder Wells (Max.) : 12
Minimum Visible Range [s] : 32
Maximum Visible Range [s] : 138
Start Analysis Time Range [s] : 33
End Analysis Time Range [s] : 137.5
Ladder Concentration [pg/μl] : 1950
Uses Standard Area for Ladder Fragments
Lower Marker Concentration [pg/μl] : 125
Upper Marker Concentration [pg/μl] : 75
Used Upper Marker for Quantitation
Standard Curve Fit is Point to Point
Show Data Aligned to Lower and Upper Marker

Integrator Settings

Integration Start Time [s] : 33.05
Integration End Time [s] : 137
Slope Threshold : 0.8
Height Threshold [FU] : 5
Area Threshold : 0.1
Width Threshold [s] : 0.6
Baseline Plateau [s] : 0.5

Filter Settings

Filter Width [s] : 0.5
Polynomial Order : 4

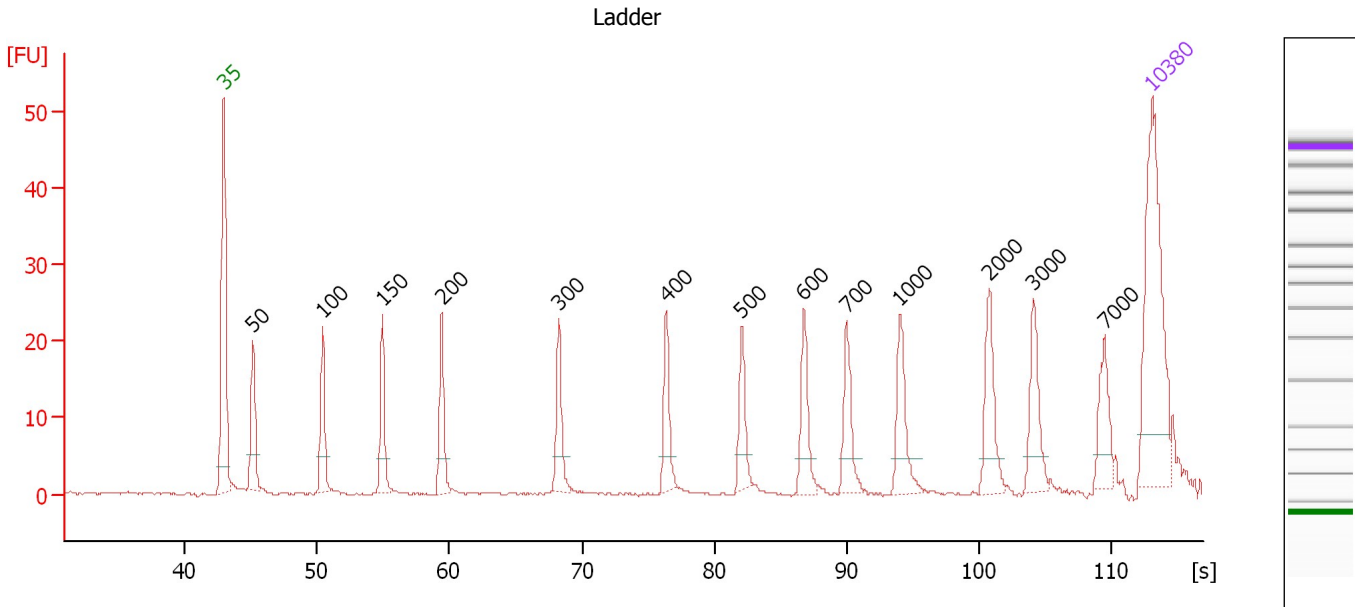
Ladder

Ladder Peak	Size	Area
1	35	160
2	50	210
3	100	208
4	150	221
5	200	242
6	300	270
7	400	305
8	500	306
9	600	336
10	700	321
11	1000	366
12	2000	413
13	3000	411
14	7000	400
15	10380	214

Assay Class: High Sensitivity DNA Assay
 Data Path: C:\...ents and Settings\Bioanalyzer\2012-04-10\2012-04-10_002.xad

Created: 4/10/2012 10:13:08 AM
 Modified: 4/10/2012 10:50:27 AM

Electropherogram Summary



Overall Results for Ladder

Noise: 0.1

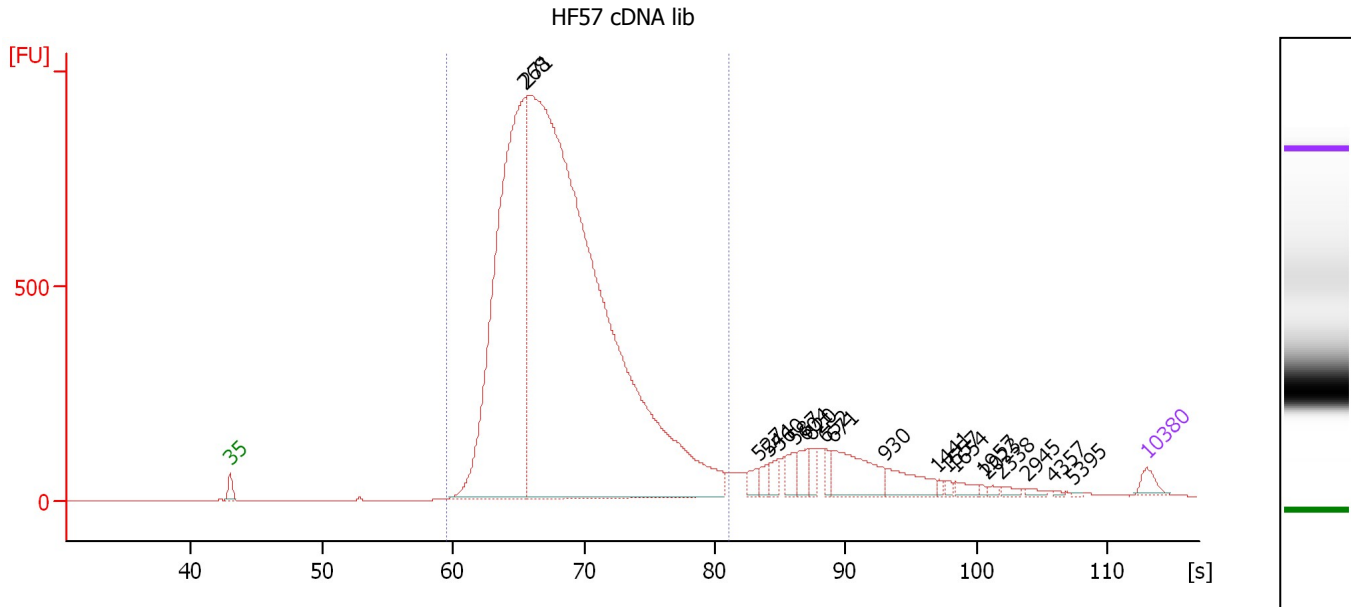
Peak table for Ladder

Peak	Size [bp]	Conc. [pg/μl]	Molarity [pmol/l]	Observations
1	35	125.00	5,411.3	Lower Marker
2	50	150.00	4,545.5	Ladder Peak
3	100	150.00	2,272.7	Ladder Peak
4	150	150.00	1,515.2	Ladder Peak
5	200	150.00	1,136.4	Ladder Peak
6	300	150.00	757.6	Ladder Peak
7	400	150.00	568.2	Ladder Peak
8	500	150.00	454.5	Ladder Peak
9	600	150.00	378.8	Ladder Peak
10	700	150.00	324.7	Ladder Peak
11	1,000	150.00	227.3	Ladder Peak
12	2,000	150.00	113.6	Ladder Peak
13	3,000	150.00	75.8	Ladder Peak
14	7,000	150.00	32.5	Ladder Peak
15	10,380	75.00	10.9	Upper Marker

Assay Class: High Sensitivity DNA Assay
 Data Path: C:\...ents and Settings\Bioanalyzer\2012-04-10\2012-04-10_002.xad

Created: 4/10/2012 10:13:08 AM
 Modified: 4/10/2012 10:50:27 AM

Electropherogram Summary Continued ...



Overall Results for sample 1 : HF57 cDNA lib

Number of peaks found: 20 Corr. Area 1: 13,658.8
 Noise: 0.2

Peak table for sample 1 : HF57 cDNA lib

Peak	Size [bp]	Conc. [pg/μl]	Molarity [pmol/l]	Observations
1	35	125.00	5,411.3	Lower Marker
2	268	6,303.46	35,599.5	
3	271	15,996.18	89,569.3	
4	527	99.01	284.9	
5	544	96.52	268.8	
6	560	98.21	265.9	
7	587	125.10	322.7	
8	604	165.51	414.9	
9	620	95.67	233.9	
10	652	94.02	218.6	
11	671	542.31	1,225.0	
12	930	264.16	430.5	
13	1,441	25.11	26.4	
14	1,557	22.88	22.3	
15	1,654	62.87	57.6	
16	1,957	14.25	11.0	
17	2,023	22.64	17.0	
18	2,338	33.33	21.6	
19	2,945	25.38	13.1	
20	4,357	9.51	3.3	
21	5,395	5.98	1.7	
22	10,380	75.00	10.9	Upper Marker

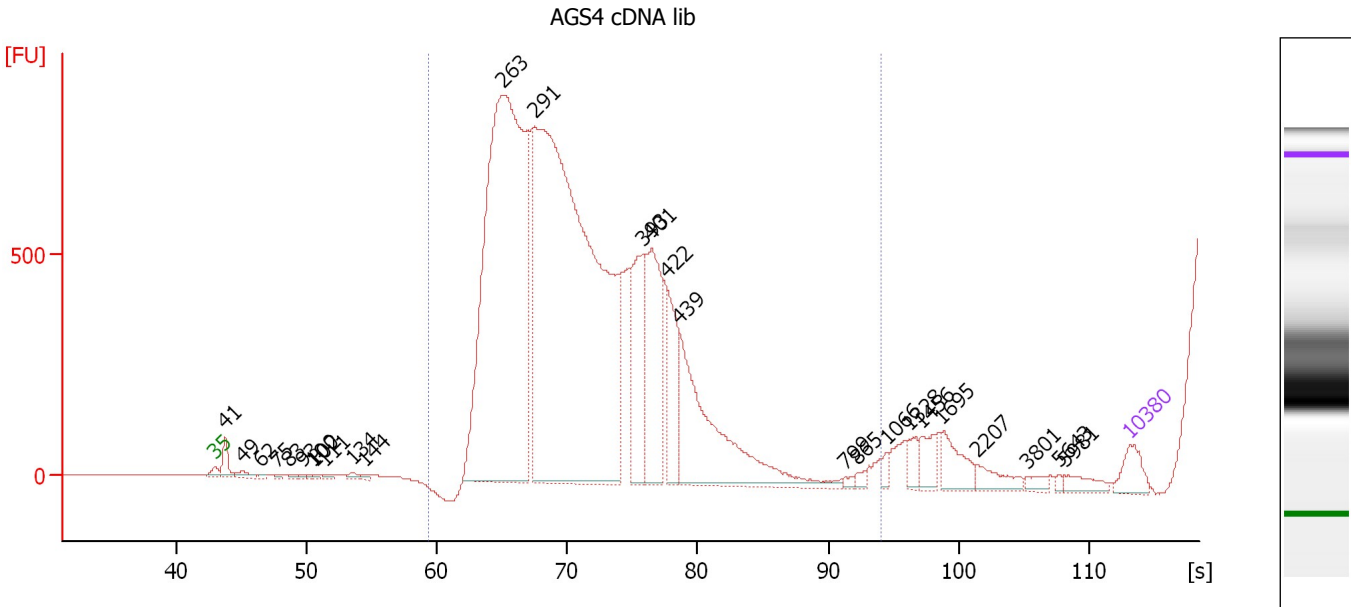
Region table for sample 1 : HF57 cDNA lib

From [bp]	Molarity [pmol/l]	Average Size [bp]	Conc. [pg/μl]	To [bp]	Corr. Area	% of Total	Size distribution in CV [%]	Color
200	107,745.9	303	20,871.47	483	13,658.8	88	16.5	Blue

Assay Class: High Sensitivity DNA Assay
 Data Path: C:\...ents and Settings\Bioanalyzer\2012-04-10\2012-04-10_002.xad

Created: 4/10/2012 10:13:08 AM
 Modified: 4/10/2012 10:50:27 AM

Electropherogram Summary Continued ...



Overall Results for sample 2 : AGS4 cDNA lib

Number of peaks found: 27 Corr. Area 1: 10,932.8
 Noise: 0.5

Peak table for sample 2 : AGS4 cDNA lib


Peak	Size [bp]	Conc. [pg/μl]	Molarity [pmol/l]	Observations
1	35	125.00	5,411.3	Lower Marker
2	41	102.15	3,809.2	
3	49	36.80	1,129.6	
4	62	10.12	245.9	
5	75	11.38	230.3	
6	83	13.12	238.3	
7	93	9.65	156.9	
8	100	9.33	141.7	
9	102	10.13	151.1	
10	111	15.30	208.6	
11	134	23.58	265.7	
12	144	12.67	133.3	
13	263	3,661.28	21,096.7	
14	291	4,639.94	24,133.2	
15	393	481.59	1,857.2	
16	401	562.99	2,125.0	
17	422	328.17	1,179.1	
18	439	877.38	3,027.7	
19	799	14.08	26.7	
20	865	20.94	36.7	
21	1,066	25.19	35.8	
22	1,328	52.11	59.4	
23	1,456	83.13	86.5	
24	1,695	116.98	104.6	
25	2,207	69.40	47.6	
26	3,801	27.19	10.8	

Assay Class: High Sensitivity DNA Assay
 Data Path: C:\...ents and Settings\Bioanalyzer\2012-04-10\2012-04-10_002.xad


Created: 4/10/2012 10:13:08 AM
 Modified: 4/10/2012 10:50:27 AM

Electropherogram Summary Continued ...

... Peak table for sample 2 : AGS4 cDNA lib

Peak	Size [bp]	Conc. [pg/μl]	Molarity [pmol/l]	Observations
27	5,643	10.21	2.7	
28	5,981	50.42	12.8	
29	 10,380	75.00	10.9	Upper Marker

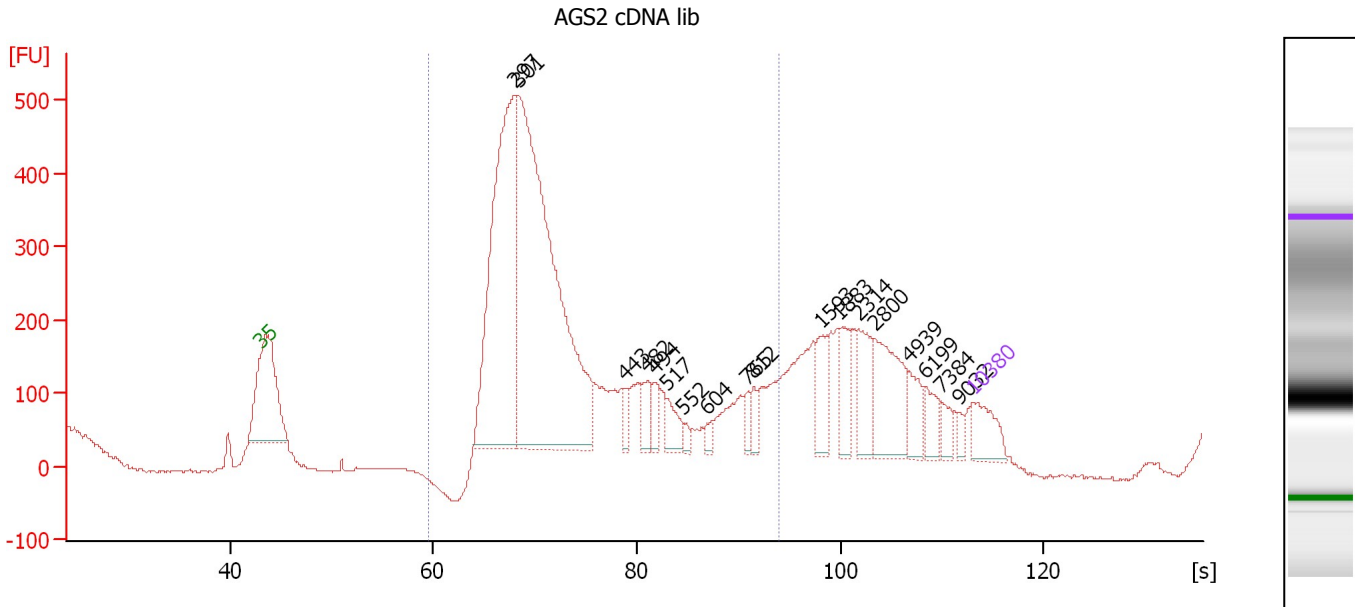
Region table for sample 2 : AGS4 cDNA lib

From [bp]	Molarity [pmol/l]	Average Size [bp]	Conc. [pg/μl]	To [bp]	Corr. Area	% of Total	Size distribution in CV [%]	Color
200	35,627.0	317	7,202.19	1,000	10,932.8	100	16.4	

Assay Class: High Sensitivity DNA Assay
 Data Path: C:\...ents and Settings\Bioanalyzer\2012-04-10\2012-04-10_002.xad

Created: 4/10/2012 10:13:08 AM
 Modified: 4/10/2012 10:50:27 AM

Electropherogram Summary Continued ...



Overall Results for sample 3 : AGS2 cDNA lib

Number of peaks found: 18 Corr. Area 1: 5,147.2
 Noise: 0.8

Peak table for sample 3 : AGS2 cDNA lib

Peak	Size [bp]	Conc. [pg/μl]	Molarity [pmol/l]	Observations
1	35	125.00	5,411.3	Lower Marker
2	297	1,085.44	5,536.1	
3	301	1,662.52	8,376.9	
4	443	38.35	131.2	
5	482	60.24	189.4	
6	494	49.36	151.4	
7	517	59.10	173.1	
8	552	17.89	49.1	
9	604	19.36	48.6	
10	765	33.13	65.6	
11	812	31.49	58.8	
12	1,593	85.15	81.0	
13	1,883	72.75	58.5	
14	2,314	105.51	69.1	
15	2,800	186.90	101.2	
16	4,939	62.58	19.2	
17	6,199	47.57	11.6	
18	7,384	32.89	6.7	
19	9,032	16.45	2.8	
20	10,380	75.00	10.9	Upper Marker

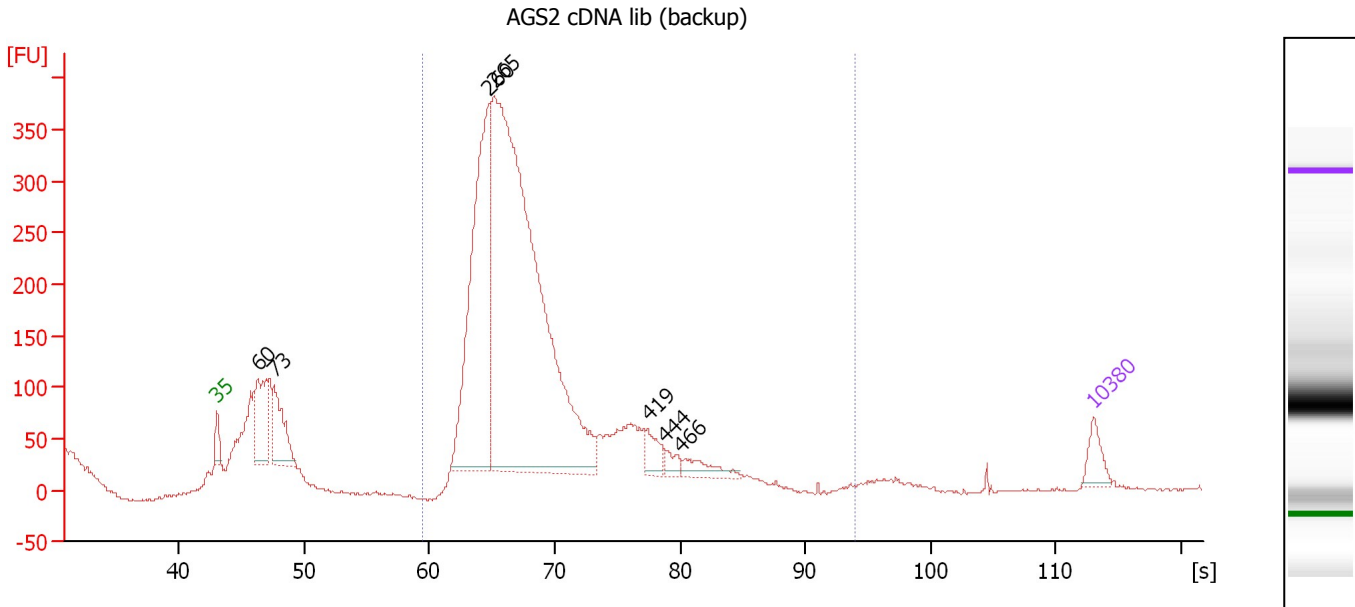
Region table for sample 3 : AGS2 cDNA lib

From [bp]	Molarity [pmol/l]	Average Size [bp]	Conc. [pg/μl]	To [bp]	Corr. Area	% of Total	Size distribution in CV [%]	Color
200	14,264.3	385	3,177.94	1,000	5,147.2	73	40.8	Blue

Assay Class: High Sensitivity DNA Assay
 Data Path: C:\...ents and Settings\Bioanalyzer\2012-04-10\2012-04-10_002.xad

Created: 4/10/2012 10:13:08 AM
 Modified: 4/10/2012 10:50:27 AM

Electropherogram Summary Continued ...



Overall Results for sample 4 : AGS2 cDNA lib (backup)

Number of peaks found: 7 Corr. Area 1: 3,695.7
 Noise: 1.1

Peak table for sample 4 : AGS2 cDNA lib (backup)

Peak	Size [bp]	Conc. [pg/μl]	Molarity [pmol/l]	Observations
1	35	125.00	5,411.3	Lower Marker
2	60	407.73	10,262.1	
3	73	367.63	7,648.0	
4	260	1,624.76	9,462.4	
5	265	4,181.96	23,908.6	
6	419	100.59	363.7	
7	444	48.26	164.7	
8	466	96.56	313.9	
9	10,380	75.00	10.9	Upper Marker

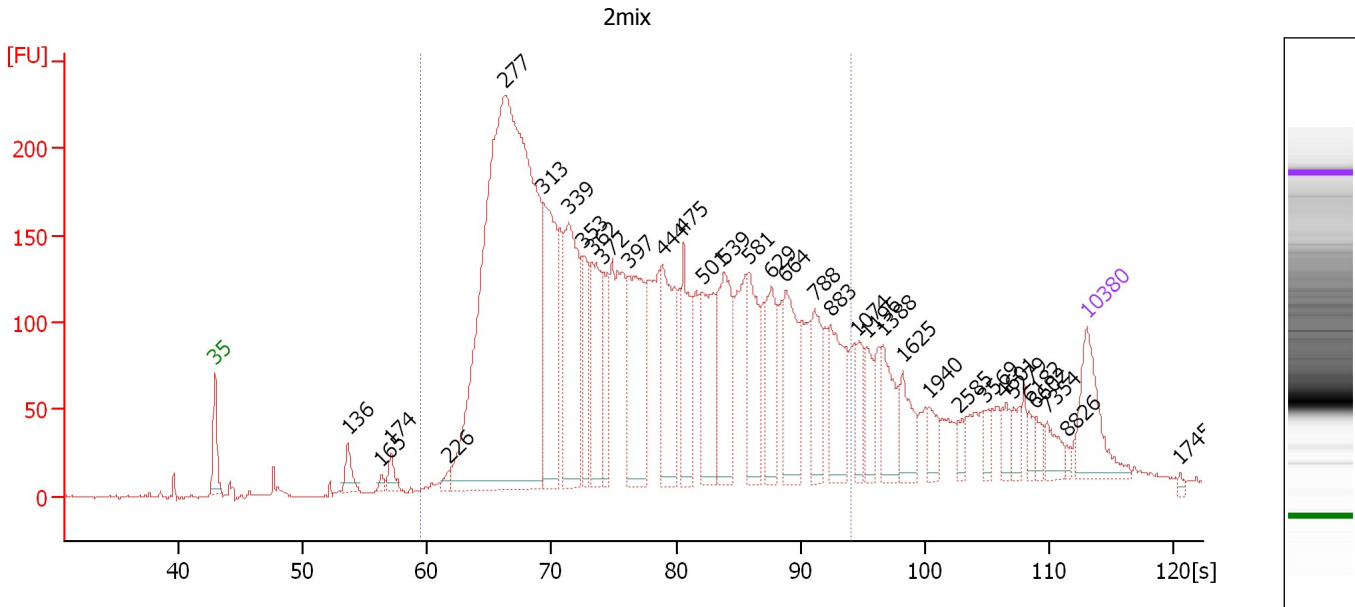
Region table for sample 4 : AGS2 cDNA lib (backup)

From [bp]	Molarity [pmol/l]	Average Size [bp]	Conc. [pg/μl]	To [bp]	Corr. Area	% of Total	Size distribution in CV [%]	Color
200	31,501.2	295	5,948.02	1,000	3,695.7	87	17.5	Blue

Assay Class: High Sensitivity DNA Assay
 Data Path: C:\...ents and Settings\Bioanalyzer\2012-04-10\2012-04-10_002.xad

Created: 4/10/2012 10:13:08 AM
 Modified: 4/10/2012 10:50:27 AM

Electropherogram Summary Continued ...



Overall Results for sample 5 : 2mix

Number of peaks found: 34 Corr. Area 1: 5,479.6
 Noise: 0.8

Peak table for sample 5 : 2mix


Peak	Size [bp]	Conc. [pg/μl]	Molarity [pmol/l]	Observations
1	35	125.00	5,411.3	Lower Marker
2	136	34.52	385.8	
3	165	8.60	78.8	
4	174	24.05	209.5	
5	226	9.29	62.2	
6	277	1,498.97	8,199.0	
7	313	252.72	1,222.3	
8	339	247.07	1,104.9	
9	353	85.56	367.1	
10	362	137.52	576.0	
11	372	76.88	313.3	
12	397	184.48	703.4	
13	444	169.44	578.0	
14	475	104.01	332.1	
15	501	137.08	414.2	
16	539	135.97	382.2	
17	581	106.98	278.8	
18	629	81.77	196.9	
19	664	113.55	259.0	
20	788	71.49	137.5	
21	883	96.78	166.0	
22	1,074	35.79	50.5	
23	1,196	37.06	47.0	
24	1,388	61.95	67.6	
25	1,625	44.68	41.7	
26	1,940	22.12	17.3	

Assay Class: High Sensitivity DNA Assay
 Data Path: C:\...ents and Settings\Bioanalyzer\2012-04-10\2012-04-10_002.xad


Created: 4/10/2012 10:13:08 AM
 Modified: 4/10/2012 10:50:27 AM

Electropherogram Summary Continued ...

... Peak table for sample 5 : 2mix

Peak	Size [bp]	Conc. [pg/μl]	Molarity [pmol/l]	Observations
27	2,585	12.72	7.5	
28	3,569	12.76	5.4	
29	4,601	21.03	6.9	
30	5,279	16.78	4.8	
31	6,182	12.46	3.1	
32	6,602	14.31	3.3	
33	7,354	21.64	4.5	
34	8,826	5.48	0.9	
35	 10,380	75.00	10.9	Upper Marker
36	17,455	0.00	0.0	

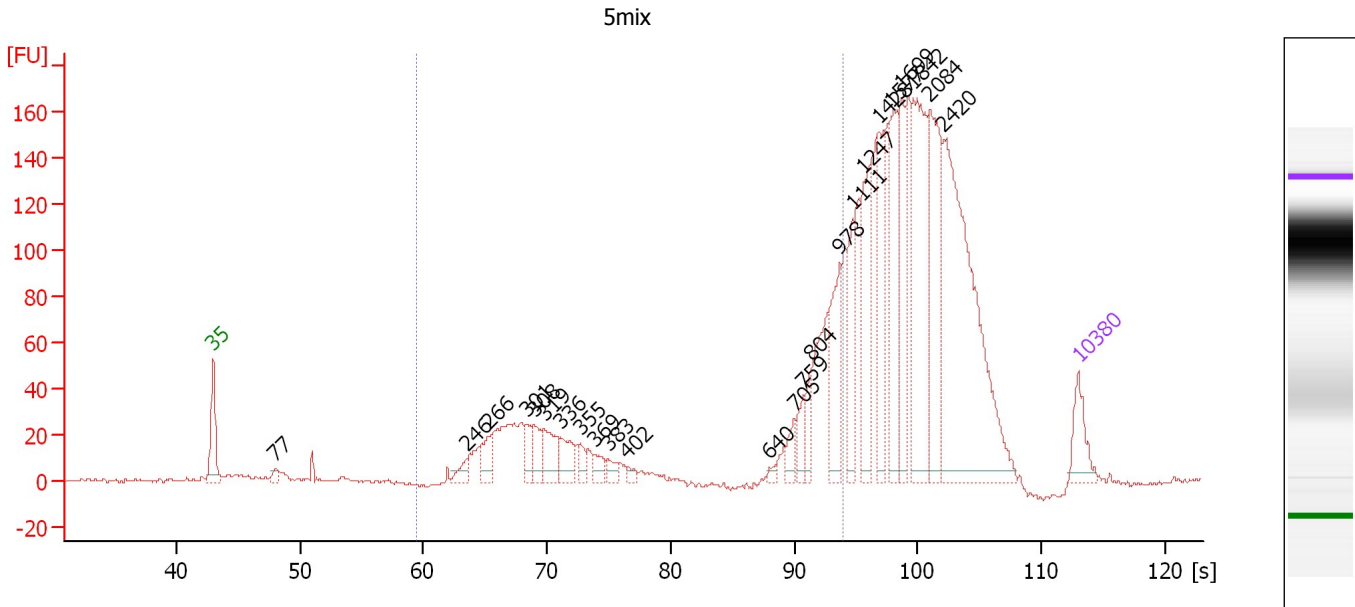
Region table for sample 5 : 2mix

From [bp]	Molarity [pmol/l]	Average Size [bp]	Conc. [pg/μl]	To [bp]	Corr. Area	% of Total	Size distribution in CV [%]	Color
200	17,905.5	445	4,367.45	1,000	5,479.6	85	39.1	

Assay Class: High Sensitivity DNA Assay
 Data Path: C:\...ents and Settings\Bioanalyzer\2012-04-10\2012-04-10_002.xad

Created: 4/10/2012 10:13:08 AM
 Modified: 4/10/2012 10:50:27 AM

Electropherogram Summary Continued ...



Overall Results for sample 6 : 5mix

Number of peaks found: 24 Corr. Area 1: 655.3
 Noise: 0.8

Peak table for sample 6 : 5mix

Peak	Size [bp]	Conc. [pg/μl]	Molarity [pmol/l]	Observations
1	35	125.00	5,411.3	Lower Marker
2	77	22.63	444.8	
3	246	34.25	210.5	
4	266	76.60	436.0	
5	301	57.74	290.5	
6	308	73.81	362.9	
7	319	104.39	496.0	
8	336	77.35	349.3	
9	355	29.31	125.2	
10	369	32.29	132.5	
11	383	30.63	121.2	
12	402	15.09	56.8	
13	640	11.43	27.1	
14	705	44.94	96.6	
15	759	53.96	107.7	
16	804	57.01	107.4	
17	978	182.11	282.0	
18	1,111	122.23	166.6	
19	1,247	199.03	241.8	
20	1,428	172.61	183.1	
21	1,577	264.95	254.6	
22	1,699	177.39	158.2	
23	1,842	391.18	321.8	
24	2,084	272.84	198.4	
25	2,420	753.00	471.5	
26	10,380	75.00	10.9	Upper Marker


Assay Class: High Sensitivity DNA Assay
Data Path: C:\...ents and Settings\Bioanalyzer\2012-04-10\2012-04-10_002.xad

Created: 4/10/2012 10:13:08 AM
Modified: 4/10/2012 10:50:27 AM

Electropherogram Summary Continued ...

... Region table for sample 6 :

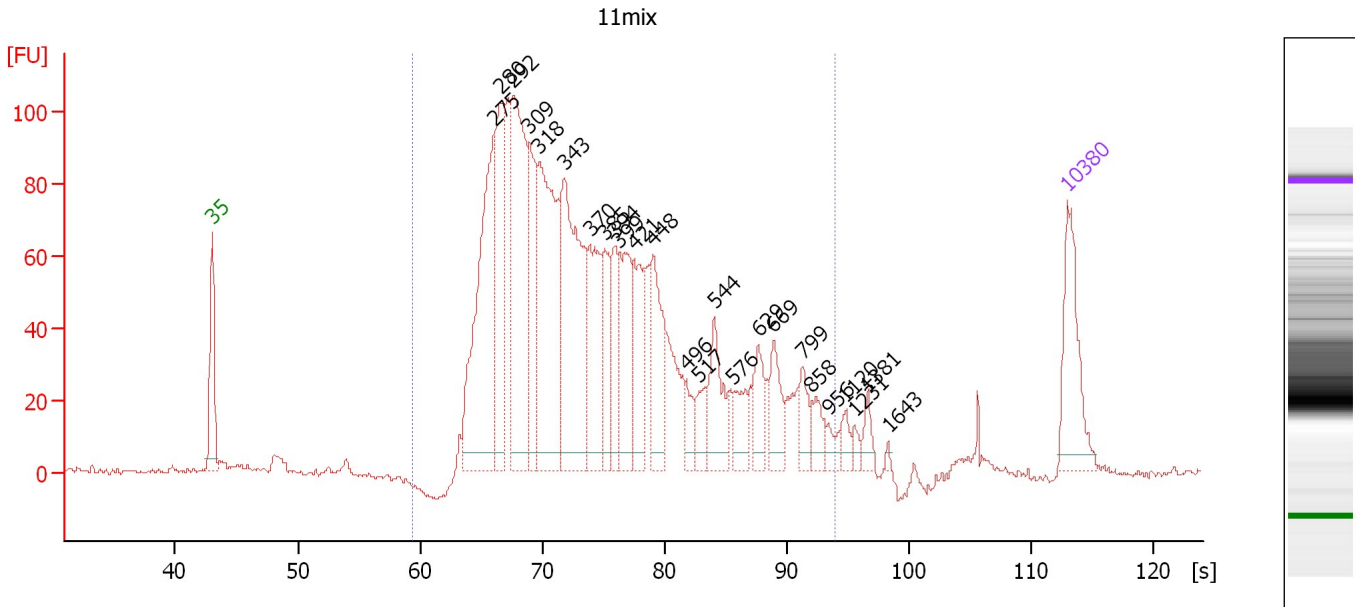
5mix

From [bp]	Molarity [pmol/l]	Average Size [bp]	Conc. [pg/μl]	To [bp]	Corr. Area	% of Total	Size distribution in CV [%]	Co lor
200	5,385.6	603	1,462.58	1,000	655.3	28	47.0	

Assay Class: High Sensitivity DNA Assay
 Data Path: C:\...ents and Settings\Bioanalyzer\2012-04-10\2012-04-10_002.xad

Created: 4/10/2012 10:13:08 AM
 Modified: 4/10/2012 10:50:27 AM

Electropherogram Summary Continued ...



Overall Results for sample 7 : 11mix

Number of peaks found: 25 Corr. Area 1: 2,129.6
 Noise: 0.9

Peak table for sample 7 : 11mix

Peak	Size [bp]	Conc. [pg/μl]	Molarity [pmol/l]	Observations
1	35	125.00	5,411.3	Lower Marker
2	275	315.50	1,738.3	
3	280	164.00	886.0	
4	292	288.07	1,495.2	
5	309	119.86	588.6	
6	318	282.65	1,345.4	
7	343	269.22	1,188.3	
8	370	120.95	495.5	
9	385	60.05	236.3	
10	394	59.46	228.5	
11	399	106.26	403.4	
12	421	91.95	330.7	
13	448	94.01	318.2	
14	496	23.66	72.2	
15	517	33.74	98.9	
16	544	66.05	183.9	
17	576	36.92	97.1	
18	629	38.70	93.2	
19	669	43.03	97.4	
20	799	27.37	51.9	
21	858	25.48	45.0	
22	956	14.33	22.7	
23	1,120	12.72	17.2	
24	1,231	8.07	9.9	
25	1,381	14.08	15.4	
26	1,643	2.50	2.3	


Assay Class: High Sensitivity DNA Assay
Data Path: C:\...ents and Settings\Bioanalyzer\2012-04-10\2012-04-10_002.xad

Created: 4/10/2012 10:13:08 AM
Modified: 4/10/2012 10:50:27 AM

Electropherogram Summary Continued ...**... Peak table for sample 7 : 11mix**

Peak	Size [bp]	Conc. [pg/ μ l]	Molarity [pmol/l]	Observations
27	10,380	75.00	10.9	Upper Marker

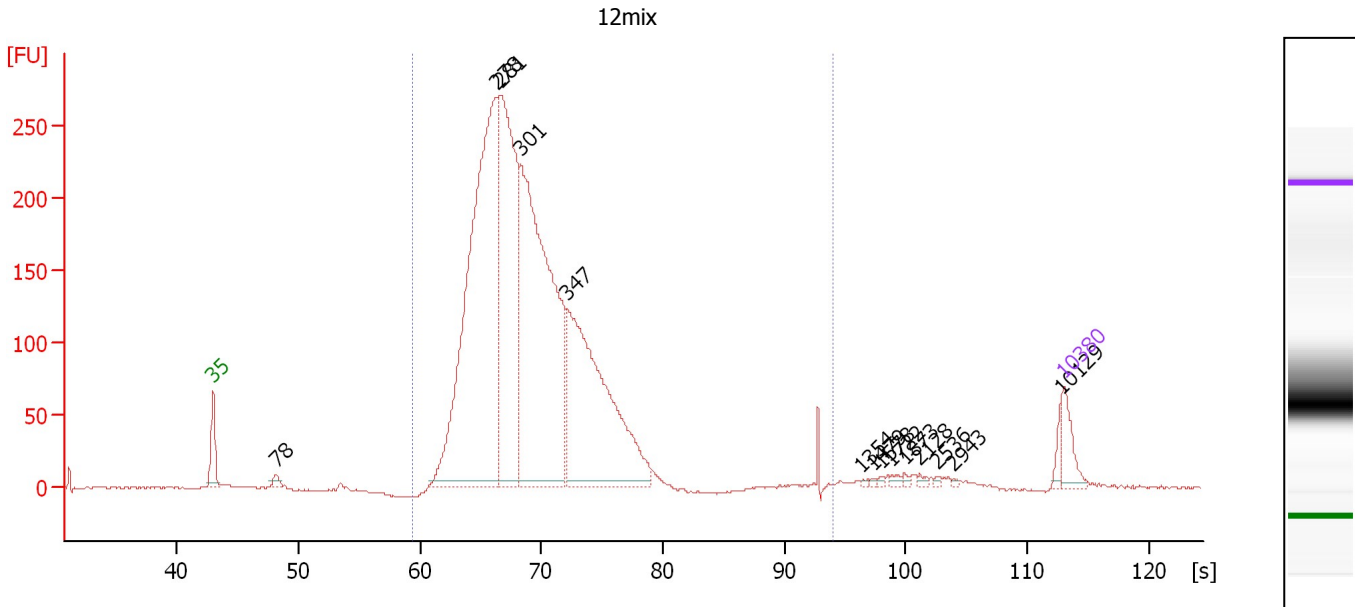
Region table for sample 7 : 11mix

From [bp]	Molarity [pmol/l]	Average Size [bp]	Conc. [pg/ μ l]	To [bp]	Corr. Area	% of Total	Size distribution in CV [%]	Color
200	11,055.0	406	2,587.40	1,000	2,129.6	95	36.0	

Assay Class: High Sensitivity DNA Assay
 Data Path: C:\...ents and Settings\Bioanalyzer\2012-04-10\2012-04-10_002.xad

Created: 4/10/2012 10:13:08 AM
 Modified: 4/10/2012 10:50:27 AM

Electropherogram Summary Continued ...



Overall Results for sample 8 : 12mix

Number of peaks found: 14 Corr. Area 1: 3,498.7
 Noise: 0.7

Peak table for sample 8 : 12mix

Peak	Size [bp]	Conc. [pg/μl]	Molarity [pmol/l]	Observations
1	35	125.00	5,411.3	Lower Marker
2	78	28.84	557.8	
3	278	2,172.27	11,840.1	
4	281	1,323.29	7,135.6	
5	301	1,840.63	9,279.3	
6	347	1,188.71	5,183.6	
7	1,354	6.03	6.7	
8	1,479	5.74	5.9	
9	1,578	6.09	5.9	
10	1,722	11.04	9.7	
11	1,873	8.32	6.7	
12	2,128	8.88	6.3	
13	2,536	5.31	3.2	
14	2,943	3.87	2.0	
15	10,129	25.13	3.8	
16	10,380	75.00	10.9	Upper Marker

Region table for sample 8 : 12mix

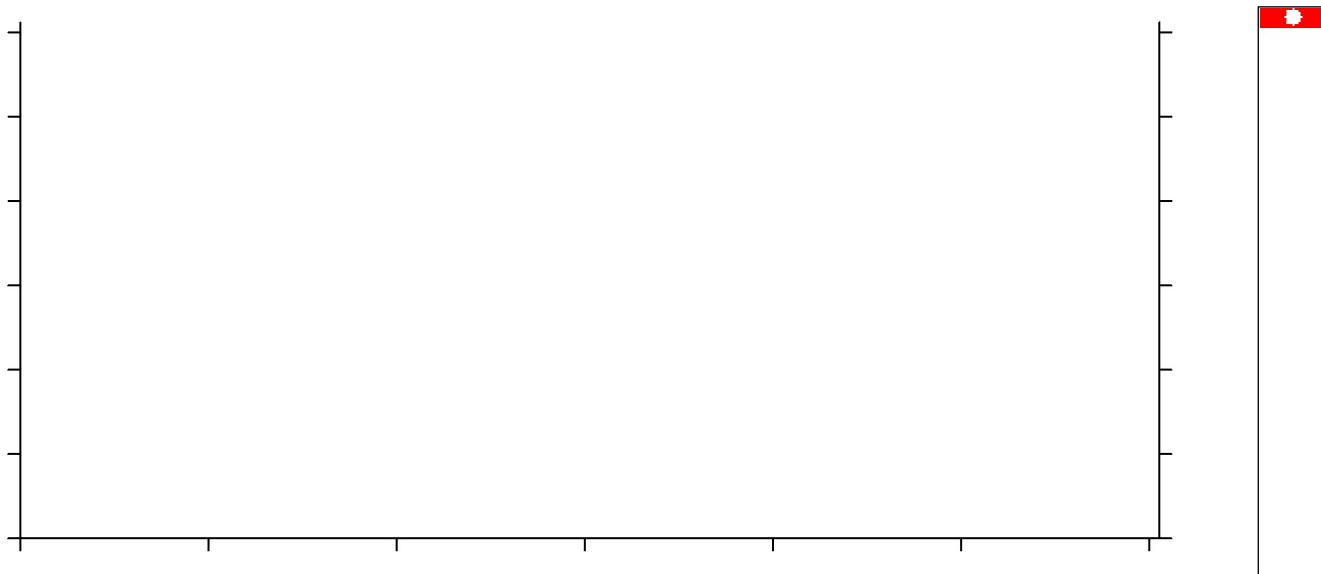
From [bp]	Molarity [pmol/l]	Average Size [bp]	Conc. [pg/μl]	To [bp]	Corr. Area	% of Total	Size distribution in CV [%]	Color
200	32,820.5	312	6,503.74	1,000	3,498.7	97	21.1	Blue

Assay Class: High Sensitivity DNA Assay
Data Path: C:\...ents and Settings\Bioanalyzer\2012-04-10\2012-04-10_002.xad

Created: 4/10/2012 10:13:08 AM
Modified: 4/10/2012 10:50:27 AM

Electropherogram Summary Continued ...

None



Setpoint Deviations for sample 9 : None

End Analysis Time Range [s] : 17.25

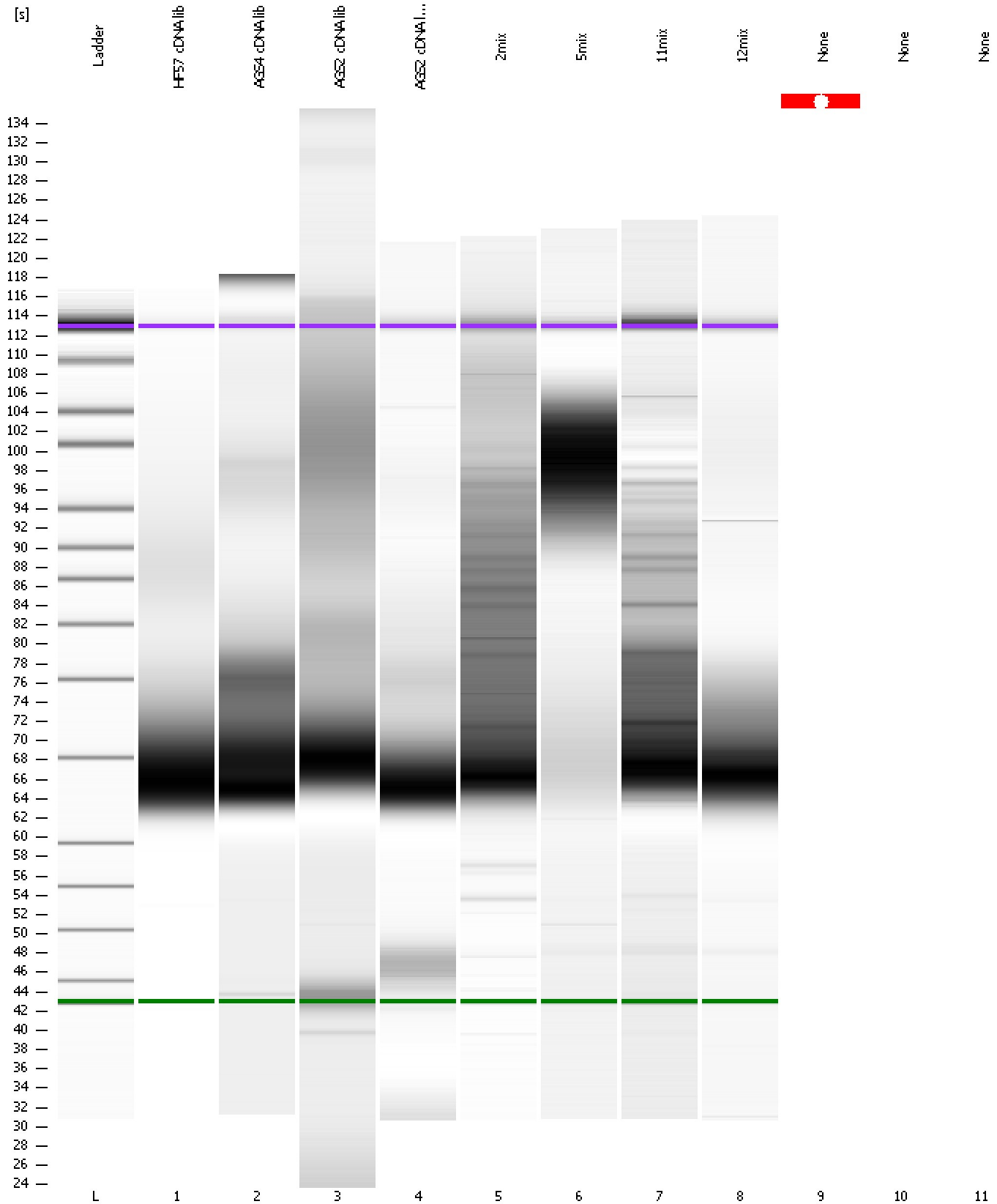
Overall Results for sample 9 : None

Noise: 1.4

Assay Class: High Sensitivity DNA Assay
Data Path: C:\...ents and Settings\Bioanalyzer\2012-04-10\2012-04-10_002.xad

Created: 4/10/2012 10:13:08 AM
Modified: 4/10/2012 10:50:27 AM

Gel Image



Assay Class: High Sensitivity DNA Assay
Data Path: C:\...ents and Settings\Bioanalyzer\2012-04-10\2012-04-10_002.xad

Created: 4/10/2012 10:13:08 AM
Modified: 4/10/2012 10:50:27 AM

Invalid Samples

Sample 10 has not been run, no results available.

Sample 11 has not been run, no results available.

Assay Class: High Sensitivity DNA Assay
 Data Path: C:\...ents and Settings\Bioanalyzer\2012-04-10\2012-04-10_002.xad

Created: 4/10/2012 10:13:08 AM
 Modified: 4/10/2012 10:50:27 AM

Run Logbook

Description	Number	Source	Category	Sub Category	Time	Time Zone	User	Host
Run aborted on port 1		Instrument	Run		4/10/2012 10:46:36 AM	(GMT --07:00) Pacific Standard Time	UC Davis	D8XSMGH1
Run started on port 1 (File: C:\Documents and Settings\Bioanalyzer\2012-04-10\2012-04-10_002.xad)		Instrument	Run		4/10/2012 10:13:14 AM	(GMT --07:00) Pacific Standard Time	UC Davis	D8XSMGH1
Product Number : G2938B		Instrument	Run		4/10/2012 10:13:14 AM	(GMT --07:00) Pacific Standard Time	UC Davis	D8XSMGH1
Name :		Instrument	Run		4/10/2012 10:13:14 AM	(GMT --07:00) Pacific Standard Time	UC Davis	D8XSMGH1
Vendor : Agilent Technologies		Instrument	Run		4/10/2012 10:13:14 AM	(GMT --07:00) Pacific Standard Time	UC Davis	D8XSMGH1
Serial# : DE13701086		Instrument	Run		4/10/2012 10:13:13 AM	(GMT --07:00) Pacific Standard Time	UC Davis	D8XSMGH1
Firmware : C.01.069		Instrument	Run		4/10/2012 10:13:13 AM	(GMT --07:00) Pacific Standard Time	UC Davis	D8XSMGH1
Cartridge : Electrode		Instrument	Run		4/10/2012 10:13:13 AM	(GMT --07:00) Pacific Standard Time	UC Davis	D8XSMGH1