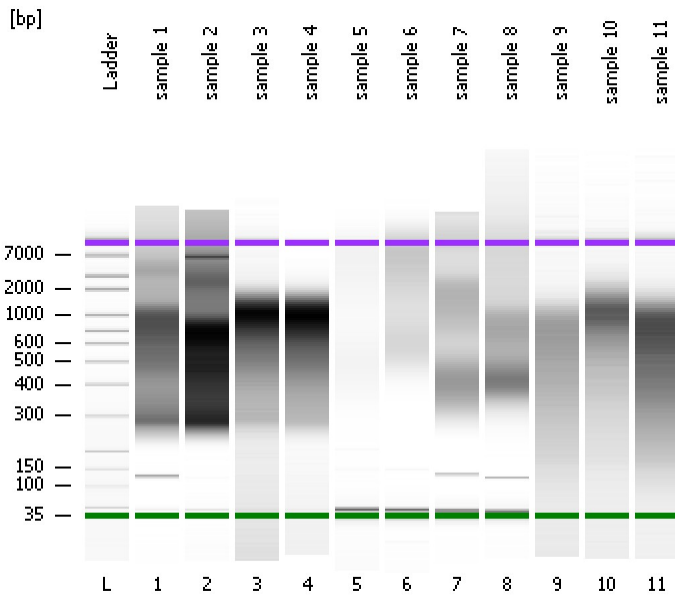


Assay Class: High Sensitivity DNA Assay
Data Path: C:\...ents and Settings\Bioanalyzer\2012-04-10\2012-04-10_003.xad

Created: 4/10/2012 11:14:30 AM
Modified: 4/10/2012 11:56:15 AM

Electrophoresis File Run Summary



Instrument Information:

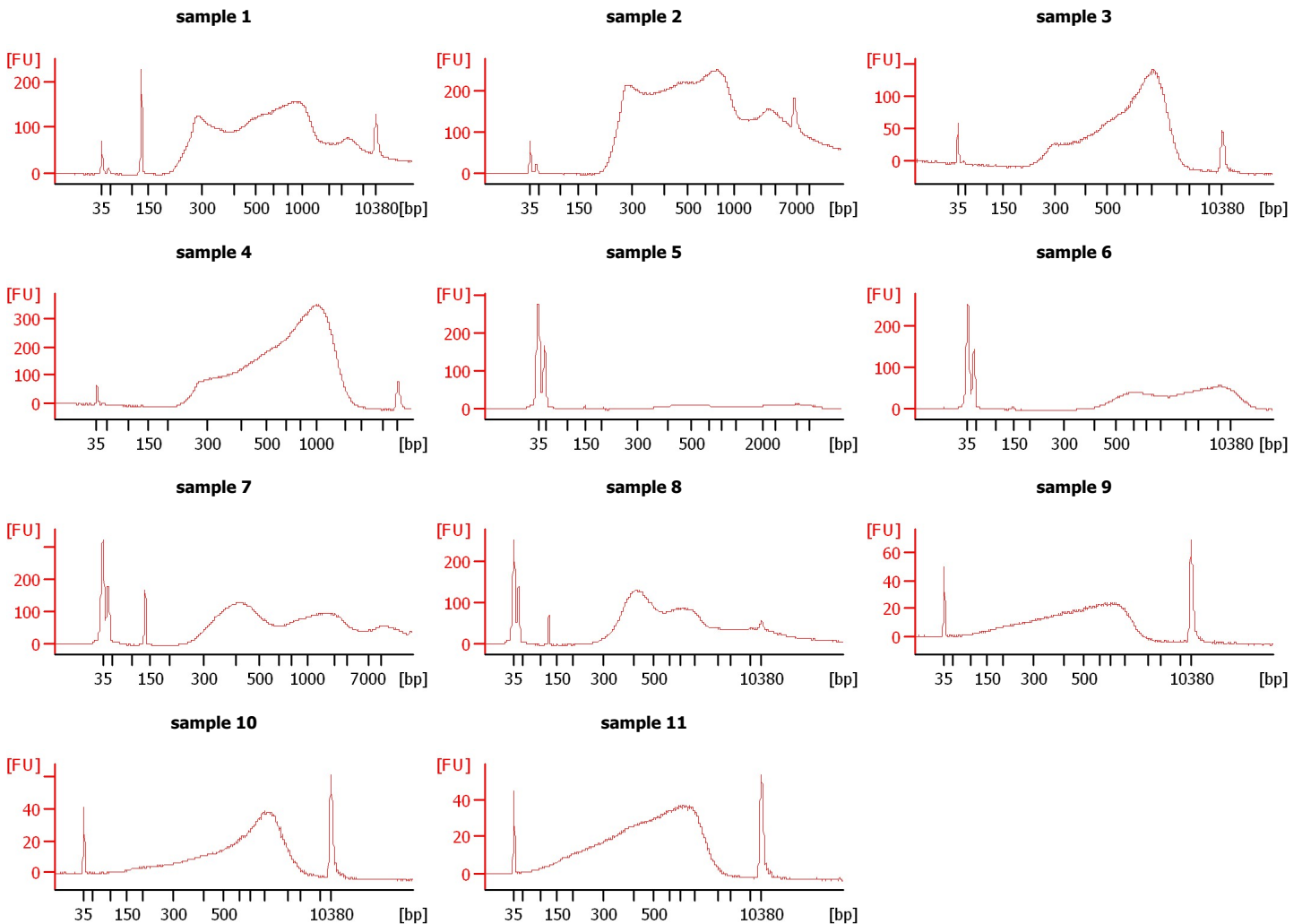
Instrument Name: DE13701086 Firmware: C.01.069
Serial#: DE13701086 Type: G2938B

Assay Information:

Assay Origin Path: C:\Program Files\Agilent\2100 bioanalyzer\2100 expert\assays\dsDNA\High Sensitivity DNA.xsy
Assay Class: High Sensitivity DNA Assay
Version: 1.03
Assay Comments: Copyright © 2003-2010 Agilent Technologies

Chip Information:

Chip Lot #: Reagent Kit Lot #: Chip Comments:



Assay Class: High Sensitivity DNA Assay
 Data Path: C:\...ents and Settings\Bioanalyzer\2012-04-10\2012-04-10_003.xad

Created: 4/10/2012 11:14:30 AM
 Modified: 4/10/2012 11:56:15 AM

Electrophoresis File Run Summary (Chip Summary)

Sample Name	Sample Comment	Rest. Digest	Status	Observation	Result Label	Result Color
sample 1		<input type="checkbox"/>	✓			
sample 2		<input type="checkbox"/>	✓			
sample 3		<input type="checkbox"/>	✓			
sample 4		<input type="checkbox"/>	✓			
sample 5		<input type="checkbox"/>	✓			
sample 6		<input type="checkbox"/>	✓			
sample 7		<input type="checkbox"/>	✓			
sample 8		<input type="checkbox"/>	✓			
sample 9		<input type="checkbox"/>	✓			
sample 10		<input type="checkbox"/>	✓			
sample 11		<input type="checkbox"/>	✓			
Ladder		<input type="checkbox"/>	✓			

Chip Lot #

Reagent Kit Lot #

Chip Comments :

Assay Class: High Sensitivity DNA Assay
Data Path: C:\...ents and Settings\Bioanalyzer\2012-04-10\2012-04-10_003.xad

Created: 4/10/2012 11:14:30 AM
Modified: 4/10/2012 11:56:15 AM

Electrophoresis Assay Details

General Analysis Settings

Number of Available Sample and Ladder Wells (Max.) : 12
Minimum Visible Range [s] : 32
Maximum Visible Range [s] : 138
Start Analysis Time Range [s] : 33
End Analysis Time Range [s] : 137.5
Ladder Concentration [pg/ μ l] : 1950
Uses Standard Area for Ladder Fragments
Lower Marker Concentration [pg/ μ l] : 125
Upper Marker Concentration [pg/ μ l] : 75
Used Upper Marker for Quantitation
Standard Curve Fit is Point to Point
Show Data Aligned to Lower and Upper Marker

Integrator Settings

Integration Start Time [s] : 33.05
Integration End Time [s] : 137
Slope Threshold : 0.8
Height Threshold [FU] : 5
Area Threshold : 0.1
Width Threshold [s] : 0.6
Baseline Plateau [s] : 0.5

Filter Settings

Filter Width [s] : 0.5
Polynomial Order : 4

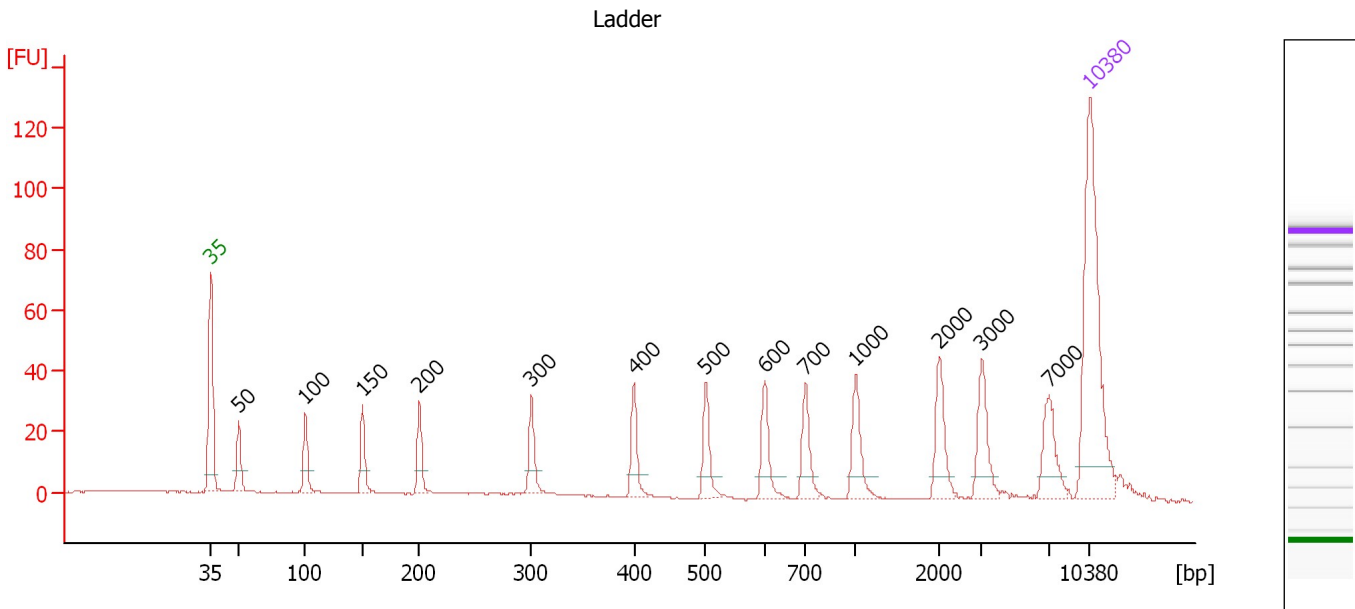
Ladder

Ladder Peak	Size	Area
1	35	160
2	50	210
3	100	208
4	150	221
5	200	242
6	300	270
7	400	305
8	500	306
9	600	336
10	700	321
11	1000	366
12	2000	413
13	3000	411
14	7000	400
15	10380	214

Assay Class: High Sensitivity DNA Assay
 Data Path: C:\...ents and Settings\Bioanalyzer\2012-04-10\2012-04-10_003.xad

Created: 4/10/2012 11:14:30 AM
 Modified: 4/10/2012 11:56:15 AM

Electropherogram Summary



Overall Results for Ladder

Noise: 0.2

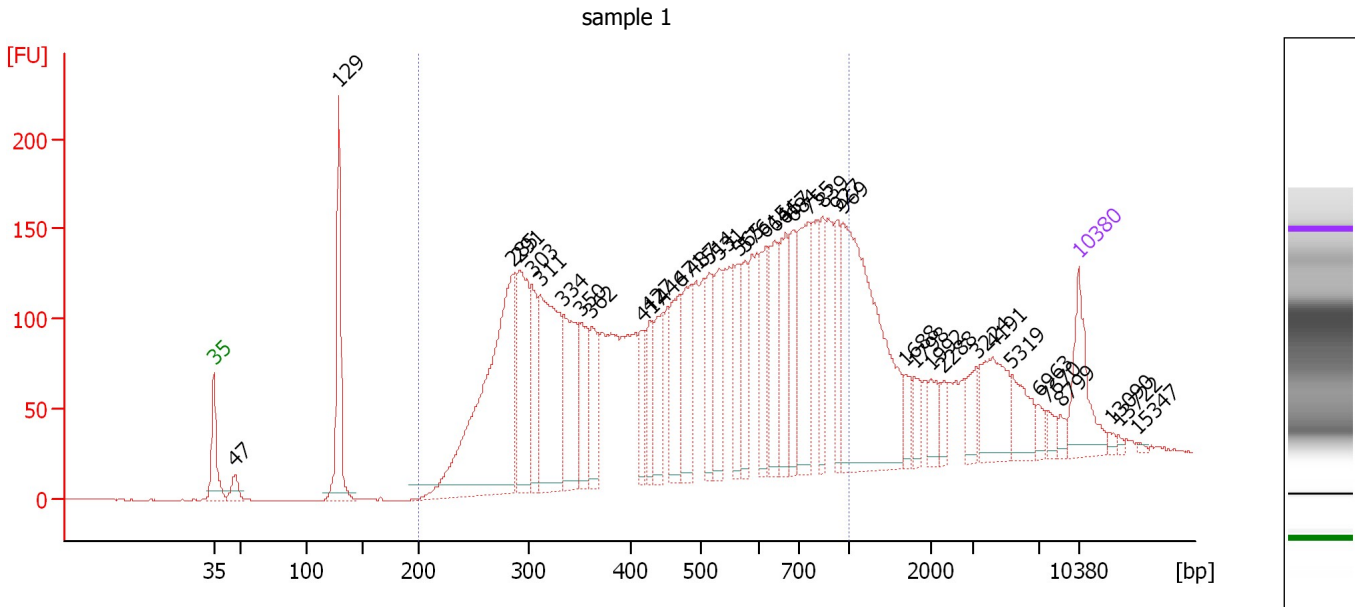
Peak table for Ladder

Peak	Size [bp]	Conc. [pg/μl]	Molarity [pmol/l]	Observations
1	35	125.00	5,411.3	Lower Marker
2	50	150.00	4,545.5	Ladder Peak
3	100	150.00	2,272.7	Ladder Peak
4	150	150.00	1,515.2	Ladder Peak
5	200	150.00	1,136.4	Ladder Peak
6	300	150.00	757.6	Ladder Peak
7	400	150.00	568.2	Ladder Peak
8	500	150.00	454.5	Ladder Peak
9	600	150.00	378.8	Ladder Peak
10	700	150.00	324.7	Ladder Peak
11	1,000	150.00	227.3	Ladder Peak
12	2,000	150.00	113.6	Ladder Peak
13	3,000	150.00	75.8	Ladder Peak
14	7,000	150.00	32.5	Ladder Peak
15	10,380	75.00	10.9	Upper Marker

Assay Class: High Sensitivity DNA Assay
 Data Path: C:\...ents and Settings\Bioanalyzer\2012-04-10\2012-04-10_003.xad

Created: 4/10/2012 11:14:30 AM
 Modified: 4/10/2012 11:56:15 AM

Electropherogram Summary Continued ...



Overall Results for sample 1 : sample 1

Number of peaks found: 39 Corr. Area 1: 4,153.9
 Noise: 0.2

Peak table for sample 1 : sample 1

Peak	Size [bp]	Conc. [pg/μl]	Molarity [pmol/l]	Observations
1	35	125.00	5,411.3	Lower Marker
2	47	28.43	922.2	
3	129	219.68	2,584.4	
4	285	556.44	2,962.6	
5	291	204.57	1,065.6	
6	303	99.77	499.4	
7	311	289.15	1,408.0	
8	334	166.78	756.8	
9	350	92.29	399.2	
10	362	87.20	365.0	
11	417	59.72	217.2	
12	427	57.24	203.1	
13	446	85.73	291.3	
14	471	107.16	344.9	
15	487	111.73	347.4	
16	514	78.24	230.7	
17	531	87.72	250.5	
18	565	75.41	202.3	
19	576	69.69	183.4	
20	615	85.97	211.6	
21	641	98.63	233.3	
22	667	100.84	229.1	
23	684	81.85	181.3	
24	755	140.10	281.2	
25	839	68.16	123.1	
26	927	63.85	104.4	

Assay Class: High Sensitivity DNA Assay
 Data Path: C:\...ents and Settings\Bioanalyzer\2012-04-10\2012-04-10_003.xad


Created: 4/10/2012 11:14:30 AM
 Modified: 4/10/2012 11:56:15 AM

Electropherogram Summary Continued ...

... Peak table for sample 1 : sample 1

Peak	Size [bp]	Conc. [pg/µl]	Molarity [pmol/l]	Observations
27	969	387.37	605.9	
28	1,688	22.73	20.4	
29	1,798	25.70	21.7	
30	1,992	29.08	22.1	
31	2,288	18.07	12.0	
32	3,224	34.08	16.0	
33	4,191	89.33	32.3	
34	5,319	49.41	14.1	
35	6,963	14.56	3.2	
36	7,670	12.98	2.6	
37	8,799	10.74	1.8	
38	10,380	75.00	10.9	Upper Marker
39	13,090	0.00	0.0	
40	13,722	0.00	0.0	
41	15,347	0.00	0.0	

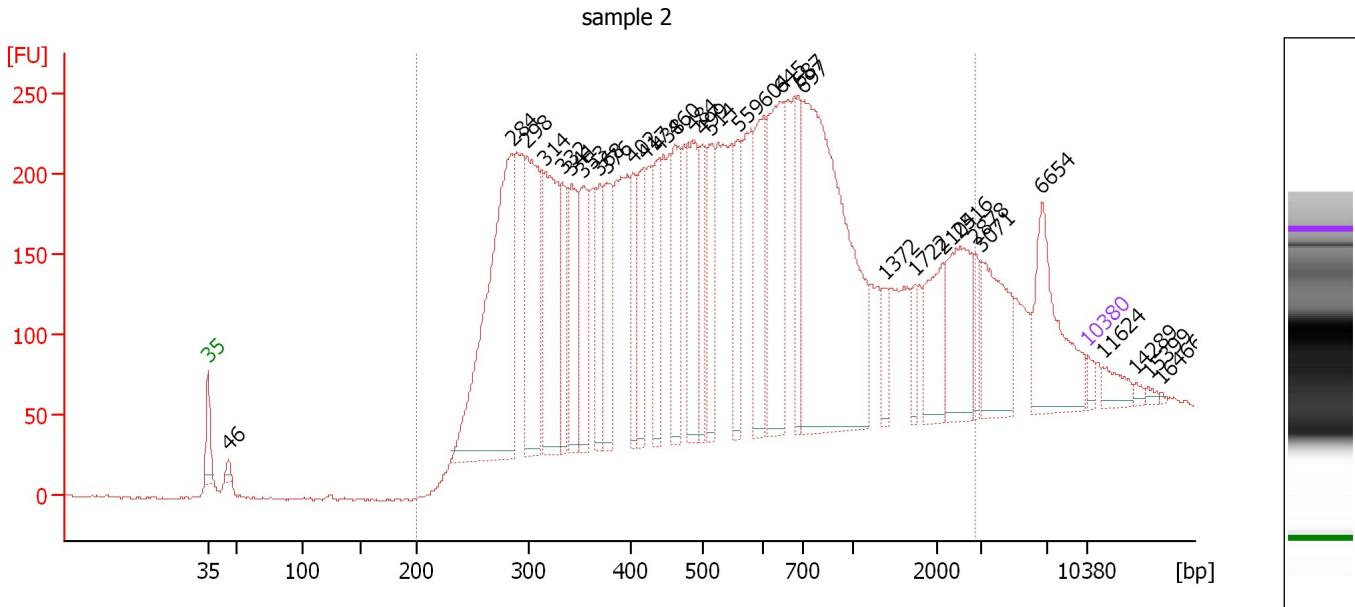
Region table for sample 1 : sample 1

From [bp]	Molarity [pmol/l]	Average Size [bp]	Conc. [pg/µl]	To [bp]	Corr. Area	% of Total	Size distribution in CV [%]	Color
200	13,057.0	515	3,598.19	1,000	4,153.9	78	38.2	

Assay Class: High Sensitivity DNA Assay
 Data Path: C:\...ents and Settings\Bioanalyzer\2012-04-10\2012-04-10_003.xad

Created: 4/10/2012 11:14:30 AM
 Modified: 4/10/2012 11:56:15 AM

Electropherogram Summary Continued ...



Overall Results for sample 2 : sample 2

Number of peaks found: 32 Corr. Area 1: 8,155.9
 Noise: 0.8

Peak table for sample 2 : sample 2

Peak	Size [bp]	Conc. [pg/μl]	Molarity [pmol/l]	Observations
1	35	125.00	5,411.3	Lower Marker
2	46	107.98	3,560.8	
3	284	4,356.25	23,205.3	
4	298	2,061.96	10,475.9	
5	314	2,002.60	9,657.4	
6	332	755.16	3,442.2	
7	341	1,062.70	4,718.6	
8	353	1,028.18	4,410.6	
9	368	734.96	3,027.9	
10	376	985.43	3,975.5	
11	402	654.49	2,469.8	
12	417	702.99	2,554.0	
13	438	711.36	2,462.1	
14	460	987.33	3,252.4	
15	484	1,080.50	3,385.1	
16	499	655.00	1,988.2	
17	514	787.71	2,324.2	
18	559	646.97	1,753.9	
19	604	1,060.10	2,661.3	
20	645	1,632.97	3,835.6	
21	687	641.39	1,415.5	
22	697	4,600.39	10,001.2	
23	1,372	238.73	263.6	
24	1,722	193.26	170.0	
25	2,104	612.54	441.1	
26	2,516	878.02	528.7	

Assay Class: High Sensitivity DNA Assay
 Data Path: C:\...ents and Settings\Bioanalyzer\2012-04-10\2012-04-10_003.xad


Created: 4/10/2012 11:14:30 AM
 Modified: 4/10/2012 11:56:15 AM

Electropherogram Summary Continued ...

... Peak table for sample 2 : sample 2

Peak	Size [bp]	Conc. [pg/μl]	Molarity [pmol/l]	Observations
27	2,878	210.26	110.7	
28	3,071	846.87	417.8	
29	6,654	1,054.45	240.1	
30	10,380	75.00	10.9	Upper Marker
31	11,624	0.00	0.0	
32	14,289	0.00	0.0	
33	15,399	0.00	0.0	
34	16,466	0.00	0.0	

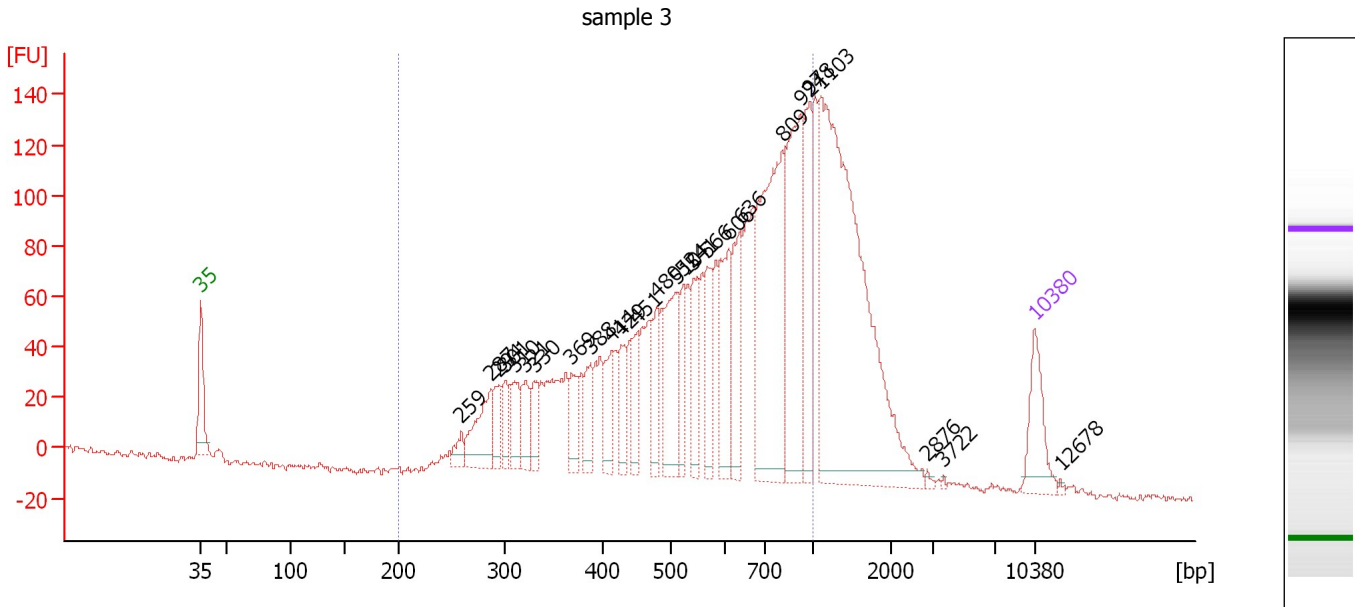
Region table for sample 2 : sample 2

From [bp]	Molarity [pmol/l]	Average Size [bp]	Conc. [pg/μl]	To [bp]	Corr. Area	% of Total	Size distribution in CV [%]	Color
200	139,325.3	684	40,591.58	2,872	8,155.9	92	78.0	

Assay Class: High Sensitivity DNA Assay
 Data Path: C:\...ents and Settings\Bioanalyzer\2012-04-10\2012-04-10_003.xad

Created: 4/10/2012 11:14:30 AM
 Modified: 4/10/2012 11:56:15 AM

Electropherogram Summary Continued ...



Overall Results for sample 3 : sample 3

Number of peaks found: 26 Corr. Area 1: 2,431.2
 Noise: 1.3

Peak table for sample 3 : sample 3

Peak	Size [bp]	Conc. [pg/μl]	Molarity [pmol/l]	Observations
1	35	125.00	5,411.3	Lower Marker
2	259	27.23	159.1	
3	287	116.37	613.4	
4	294	58.27	299.8	
5	301	45.98	231.8	
6	310	65.47	319.5	
7	321	56.93	268.4	
8	330	56.30	258.3	
9	369	57.50	236.3	
10	388	59.74	233.0	
11	414	71.86	263.0	
12	429	56.91	201.1	
13	451	61.38	206.0	
14	480	74.55	235.1	
15	510	152.57	452.9	
16	524	71.09	205.6	
17	541	95.20	266.6	
18	566	85.84	229.8	
19	606	138.90	347.2	
20	636	118.53	282.2	
21	809	406.75	761.4	
22	924	275.49	451.8	
23	978	149.76	232.1	
24	1,103	791.27	1,086.8	
25	2,876	4.10	2.2	
26	3,722	2.11	0.9	


Assay Class: High Sensitivity DNA Assay
Data Path: C:\...ents and Settings\Bioanalyzer\2012-04-10\2012-04-10_003.xad

Created: 4/10/2012 11:14:30 AM
Modified: 4/10/2012 11:56:15 AM

Electropherogram Summary Continued ...**... Peak table for sample 3 : sample 3**

Peak	Size [bp]	Conc. [pg/μl]	Molarity [pmol/l]	Observations
27	10,380	75.00	10.9	Upper Marker
28	12,678	0.00	0.0	

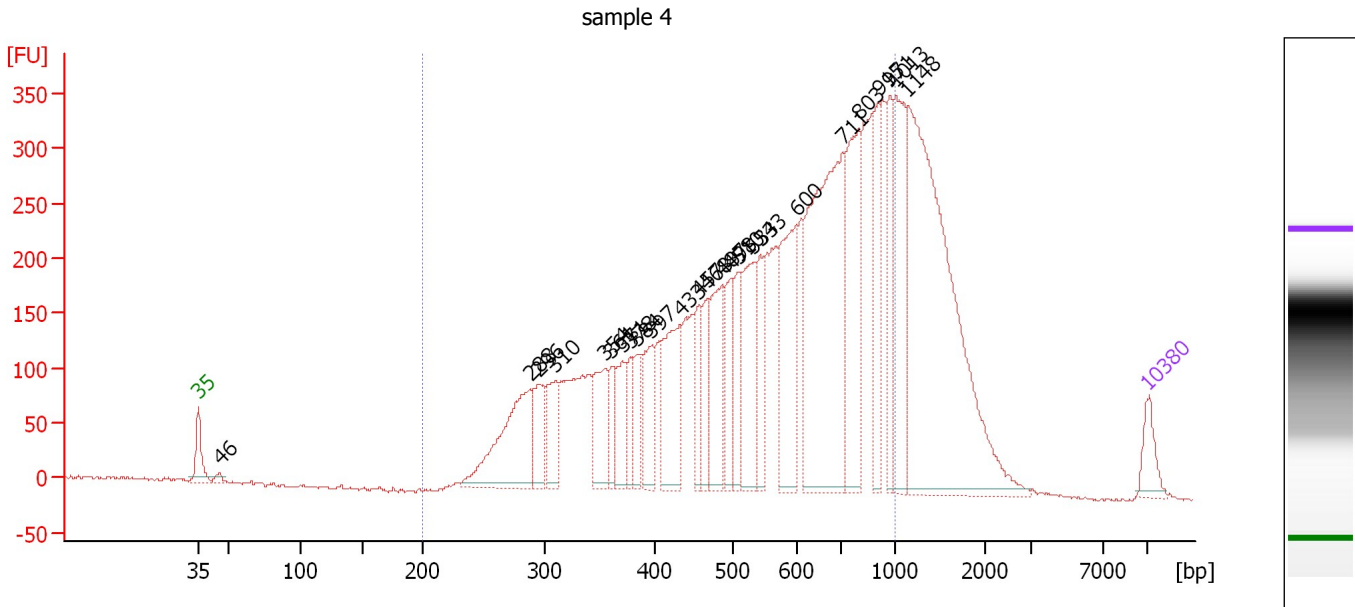
Region table for sample 3 : sample 3

From [bp]	Molarity [pmol/l]	Average Size [bp]	Conc. [pg/μl]	To [bp]	Corr. Area	% of Total	Size distribution in CV [%]	Color
200	9,863.8	592	3,213.95	1,000	2,431.2	75	33.6	

Assay Class: High Sensitivity DNA Assay
 Data Path: C:\...ents and Settings\Bioanalyzer\2012-04-10\2012-04-10_003.xad

Created: 4/10/2012 11:14:30 AM
 Modified: 4/10/2012 11:56:15 AM

Electropherogram Summary Continued ...



Overall Results for sample 4 : sample 4

Number of peaks found: 25 Corr. Area 1: 7,189.6
 Noise: 1.1


Peak table for sample 4 : sample 4

Peak	Size [bp]	Conc. [pg/μl]	Molarity [pmol/l]	Observations
1	35	125.00	5,411.3	Lower Marker
2	46	24.88	825.2	
3	288	554.39	2,911.8	
4	296	178.39	914.6	
5	310	201.17	983.1	
6	354	241.51	1,032.5	
7	361	106.80	448.6	
8	371	164.94	674.0	
9	378	110.02	441.5	
10	384	119.77	472.2	
11	397	199.70	762.4	
12	433	376.08	1,317.3	
13	457	138.31	458.3	
14	468	164.34	532.6	
15	487	306.82	955.1	
16	498	190.03	578.5	
17	510	169.29	503.1	
18	533	337.85	959.7	
19	543	172.53	481.0	
20	600	447.51	1,130.3	
21	711	1,166.84	2,486.9	
22	803	486.22	918.0	
23	915	214.96	356.0	
24	971	212.65	331.8	
25	1,013	430.45	644.0	
26	1,148	1,460.83	1,927.4	


Assay Class: High Sensitivity DNA Assay
Data Path: C:\...ents and Settings\Bioanalyzer\2012-04-10\2012-04-10_003.xad

Created: 4/10/2012 11:14:30 AM
Modified: 4/10/2012 11:56:15 AM

Electropherogram Summary Continued ...**... Peak table for sample 4 : sample 4**

Peak	Size [bp]	Conc. [pg/μl]	Molarity [pmol/l]	Observations
27	 10,380	75.00	10.9	Upper Marker

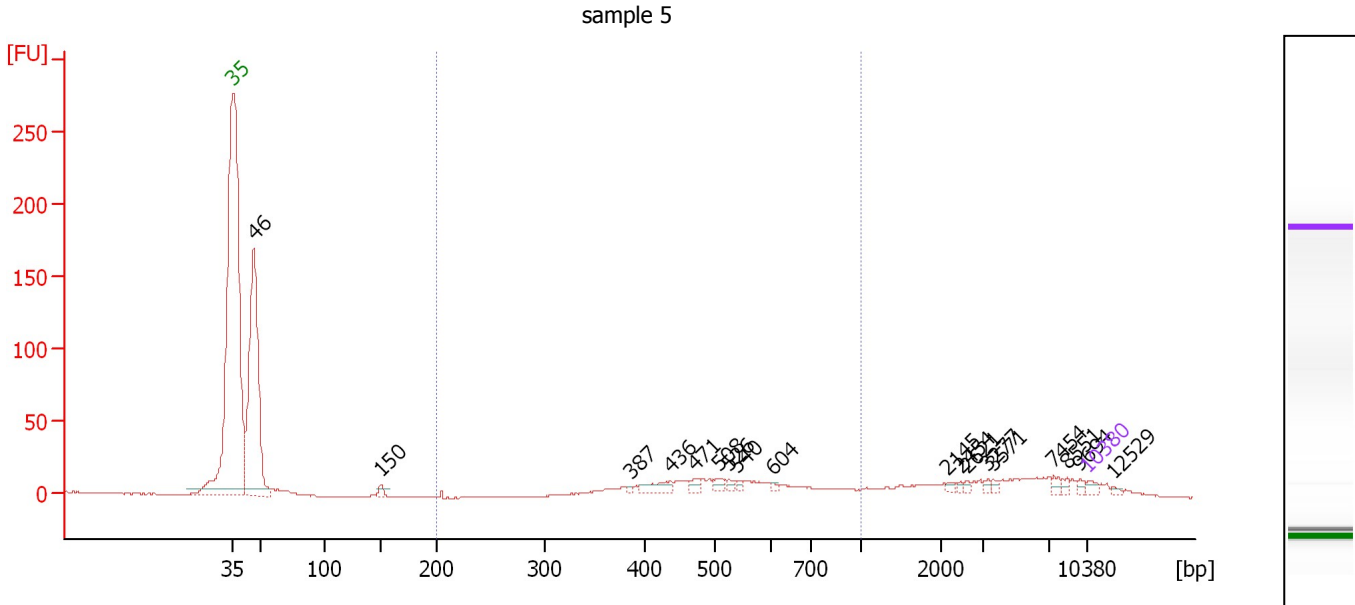
Region table for sample 4 : sample 4

From [bp]	Molarity [pmol/l]	Average Size [bp]	Conc. [pg/μl]	To [bp]	Corr. Area	% of Total	Size distribution in CV [%]	Color
200	26,128.9	578	8,278.41	1,000	7,189.6	79	34.1	

Assay Class: High Sensitivity DNA Assay
 Data Path: C:\...ents and Settings\Bioanalyzer\2012-04-10\2012-04-10_003.xad

Created: 4/10/2012 11:14:30 AM
 Modified: 4/10/2012 11:56:15 AM

Electropherogram Summary Continued ...



Overall Results for sample 5 : sample 5

Number of peaks found: 18 Corr. Area 1: 190.6
 Noise: 0.3

Peak table for sample 5 : sample 5

Peak	Size [bp]	Conc. [pg/μl]	Molarity [pmol/l]	Observations
1	35	125.00	5,411.3	Lower Marker
2	46	6,020.03	197,134.2	
3	150	130.26	1,312.6	
4	387	43.57	170.6	
5	436	260.35	904.2	
6	471	132.65	426.4	
7	508	131.59	392.6	
8	526	75.87	218.7	
9	540	56.58	158.9	
10	604	41.99	105.2	
11	2,145	43.06	30.4	
12	2,454	35.44	21.9	
13	2,621	37.57	21.7	
14	3,277	41.62	19.2	
15	3,571	48.43	20.6	
16	7,454	80.47	16.4	
17	8,551	55.92	9.9	
18	9,694	56.20	8.8	
19	10,380	75.00	10.9	Upper Marker
20	12,529	0.00	0.0	

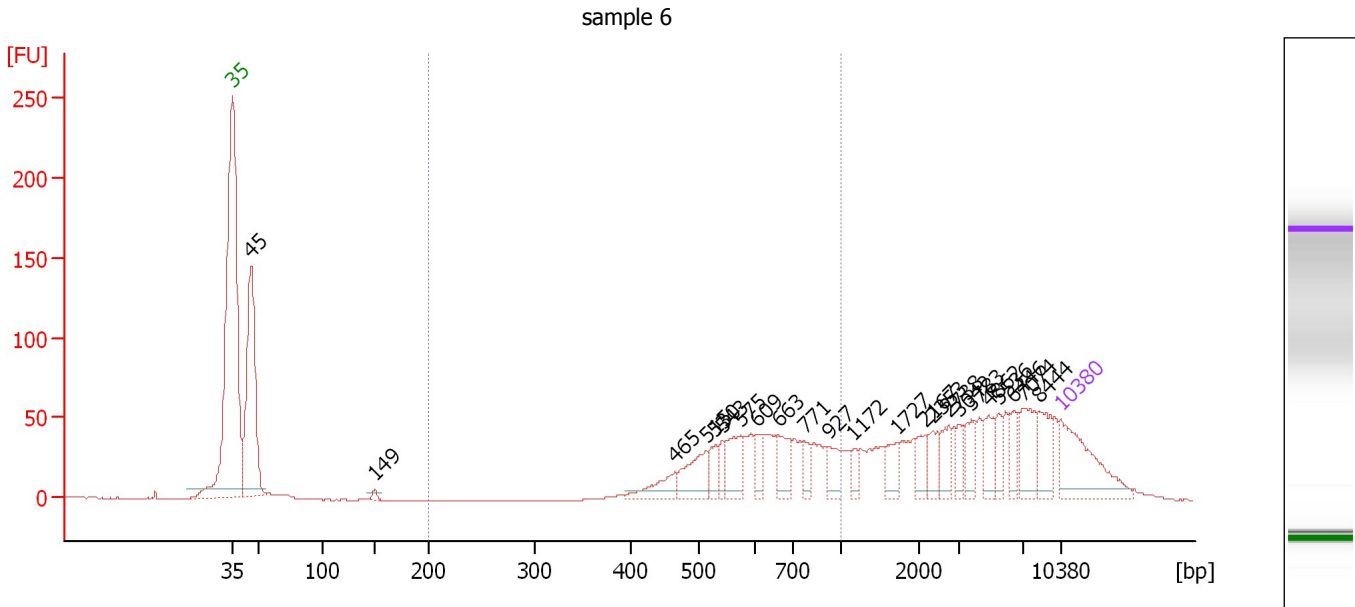
Region table for sample 5 : sample 5

From [bp]	Molarity [pmol/l]	Average Size [bp]	Conc. [pg/μl]	To [bp]	Corr. Area	% of Total	Size distribution in CV [%]	Color
200	6,660.0	539	2,189.39	1,000	190.6	26	25.9	Blue

Assay Class: High Sensitivity DNA Assay
 Data Path: C:\...ents and Settings\Bioanalyzer\2012-04-10\2012-04-10_003.xad

Created: 4/10/2012 11:14:30 AM
 Modified: 4/10/2012 11:56:15 AM

Electropherogram Summary Continued ...



Overall Results for sample 6 : sample 6

Number of peaks found: 23 Corr. Area 1: 578.9
 Noise: 0.2

Peak table for sample 6 : sample 6

Peak	Size [bp]	Conc. [pg/μl]	Molarity [pmol/l]	Observations
1	35	125.00	5,411.3	Lower Marker
2	45	293.43	9,789.6	
3	149	5.84	59.3	
4	465	33.60	109.6	
5	515	51.32	151.1	
6	530	22.85	65.3	
7	543	16.61	46.3	
8	575	45.10	118.8	
9	609	22.98	57.2	
10	663	36.25	82.9	
11	771	17.10	33.6	
12	927	21.65	35.4	
13	1,172	11.94	15.4	
14	1,727	21.05	18.5	
15	2,167	21.11	14.8	
16	2,353	22.07	14.2	
17	2,738	22.14	12.3	
18	3,042	16.79	8.4	
19	3,783	21.78	8.7	
20	4,862	26.44	8.2	
21	5,536	17.66	4.8	
22	6,446	19.48	4.6	
23	7,074	43.29	9.3	
24	8,444	34.09	6.1	
25	10,380	75.00	10.9	Upper Marker


Assay Class: High Sensitivity DNA Assay
Data Path: C:\...ents and Settings\Bioanalyzer\2012-04-10\2012-04-10_003.xad

Created: 4/10/2012 11:14:30 AM
Modified: 4/10/2012 11:56:15 AM

Electropherogram Summary Continued ...

... Region table for sample 6 :

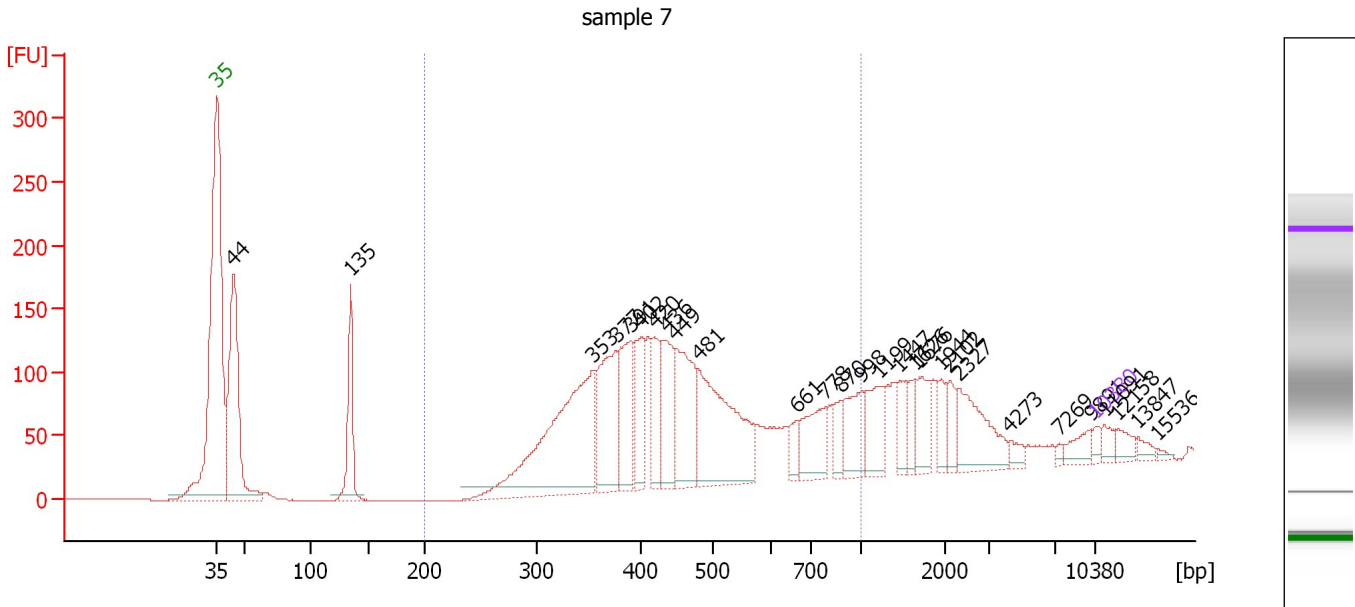
sample 6

From [bp]	Molarity [pmol/l]	Average Size [bp]	Conc. [pg/μl]	To [bp]	Corr. Area	% of Total	Size distribution in CV [%]	Color
200	970.1	642	386.58	1,000	578.9	35	22.7	

Assay Class: High Sensitivity DNA Assay
 Data Path: C:\...ents and Settings\Bioanalyzer\2012-04-10\2012-04-10_003.xad

Created: 4/10/2012 11:14:30 AM
 Modified: 4/10/2012 11:56:15 AM

Electropherogram Summary Continued ...



Overall Results for sample 7 : sample 7

Number of peaks found: 28 Corr. Area 1: 2,248.4
 Noise: 0.2

Peak table for sample 7 : sample 7

Peak	Size [bp]	Conc. [pg/μl]	Molarity [pmol/l]	Observations
1	35	125.00	5,411.3	Lower Marker
2	44	3,197.48	110,264.0	
3	135	1,096.85	12,355.3	
4	353	3,214.40	13,780.4	
5	377	1,384.85	5,567.9	
6	391	1,041.77	4,032.6	
7	402	800.18	3,016.9	
8	420	642.51	2,319.9	
9	436	853.48	2,966.5	
10	449	1,269.74	4,282.4	
11	481	2,025.84	6,380.4	
12	661	212.21	486.1	
13	778	646.87	1,260.5	
14	870	227.13	395.5	
15	998	544.03	826.2	
16	1,199	507.92	641.8	
17	1,447	304.76	319.1	
18	1,626	188.81	176.0	
19	1,676	376.15	340.0	
20	1,944	197.98	154.3	
21	2,102	196.47	141.6	
22	2,327	703.35	458.0	
23	4,273	92.40	32.8	
24	7,269	36.84	7.7	
25	9,891	164.92	25.3	
26	10,380	75.00	10.9	Upper Marker


Assay Class: High Sensitivity DNA Assay
Data Path: C:\...ents and Settings\Bioanalyzer\2012-04-10\2012-04-10_003.xad

Created: 4/10/2012 11:14:30 AM
Modified: 4/10/2012 11:56:15 AM

Electropherogram Summary Continued ...**... Peak table for sample 7 : sample 7**

Peak	Size [bp]	Conc. [pg/ μ l]	Molarity [pmol/l]	Observations
27	11,091	0.00	0.0	
28	12,158	0.00	0.0	
29	13,847	0.00	0.0	
30	15,536	0.00	0.0	

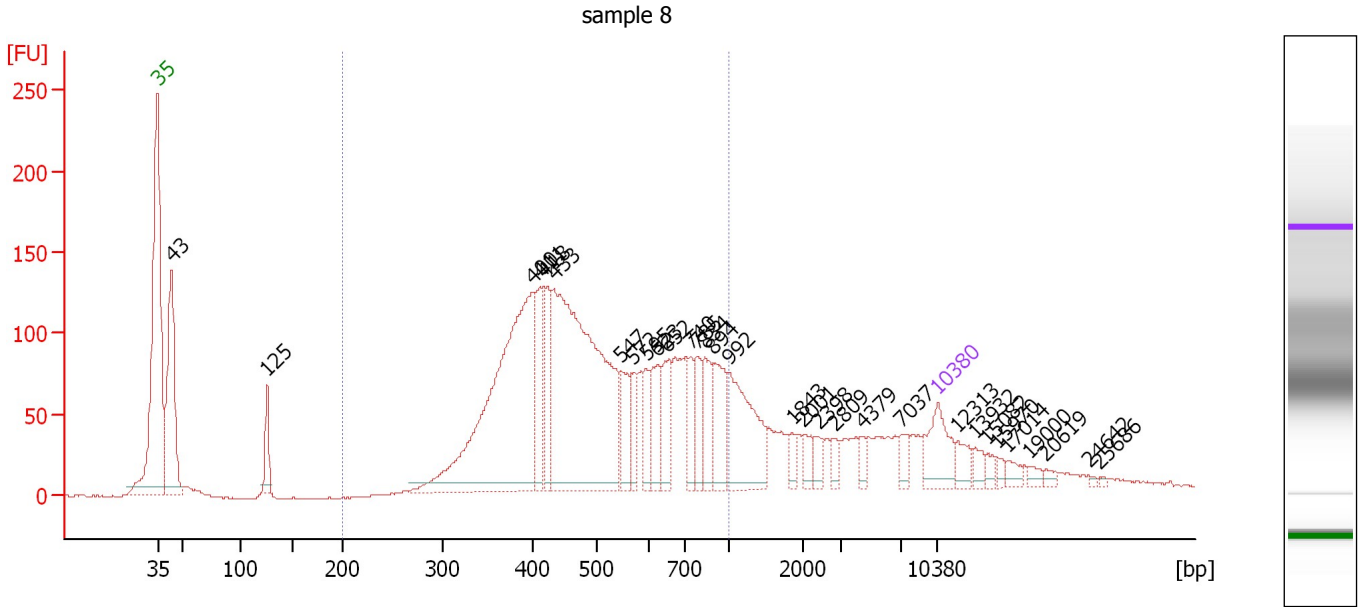
Region table for sample 7 : sample 7

From [bp]	Molarity [pmol/l]	Average Size [bp]	Conc. [pg/ μ l]	To [bp]	Corr. Area	% of Total	Size distribution in CV [%]	Color
200	41,626.3	486	11,860.68	1,000	2,248.4	64	33.7	

Assay Class: High Sensitivity DNA Assay
 Data Path: C:\...ents and Settings\Bioanalyzer\2012-04-10\2012-04-10_003.xad

Created: 4/10/2012 11:14:30 AM
 Modified: 4/10/2012 11:56:15 AM

Electropherogram Summary Continued ...



Overall Results for sample 8 : sample 8

Number of peaks found: 31 Corr. Area 1: 2,573.0
 Noise: 0.5

Peak table for sample 8 : sample 8

Peak	Size [bp]	Conc. [pg/μl]	Molarity [pmol/l]	Observations
1	35	125.00	5,411.3	Lower Marker
2	43	373.28	13,010.5	
3	125	68.09	822.5	
4	400	747.98	2,833.7	
5	411	118.34	436.0	
6	418	109.50	396.7	
7	433	800.68	2,801.9	
8	547	76.77	212.7	
9	572	57.32	152.0	
10	595	52.95	134.8	
11	623	83.01	201.8	
12	652	77.88	180.9	
13	740	61.39	125.6	
14	785	59.44	114.7	
15	834	72.79	132.2	
16	894	100.49	170.3	
17	992	179.38	274.1	
18	1,843	17.38	14.3	
19	2,001	25.11	19.0	
20	2,398	21.73	13.7	
21	2,809	14.94	8.1	
22	4,379	15.29	5.3	
23	7,037	25.03	5.4	
24	10,380	75.00	10.9	Upper Marker
25	12,313	0.00	0.0	
26	13,932	0.00	0.0	

Assay Class: High Sensitivity DNA Assay
 Data Path: C:\...ents and Settings\Bioanalyzer\2012-04-10\2012-04-10_003.xad


Created: 4/10/2012 11:14:30 AM
 Modified: 4/10/2012 11:56:15 AM

Electropherogram Summary Continued ...

... Peak table for sample 8 : sample 8

Peak	Size [bp]	Conc. [pg/μl]	Molarity [pmol/l]	Observations
27	15,082	0.00	0.0	
28	15,970	0.00	0.0	
29	17,014	0.00	0.0	
30	19,000	0.00	0.0	
31	20,619	0.00	0.0	
32	24,642	0.00	0.0	
33	25,686	0.00	0.0	

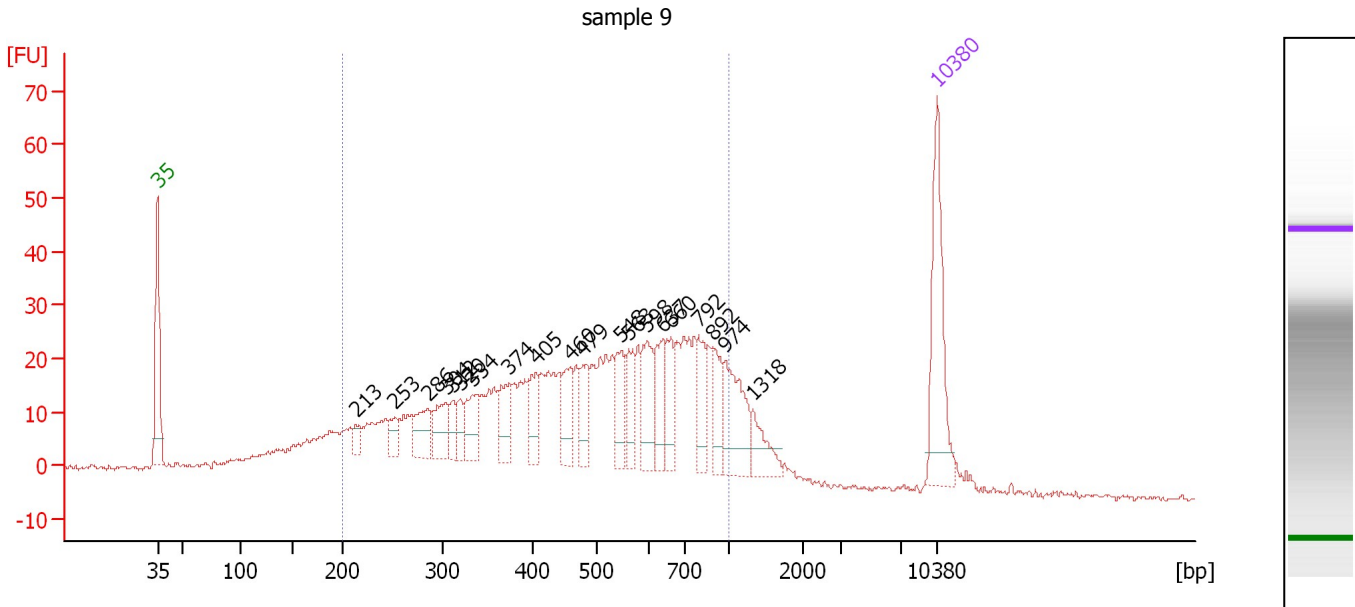
Region table for sample 8 : sample 8

From [bp]	Molarity [pmol/l]	Average Size [bp]	Conc. [pg/μl]	To [bp]	Corr. Area	% of Total	Size distribution in CV [%]	Color
200	8,526.5	528	2,649.20	1,000	2,573.0	70	31.4	

Assay Class: High Sensitivity DNA Assay
 Data Path: C:\...ents and Settings\Bioanalyzer\2012-04-10\2012-04-10_003.xad

Created: 4/10/2012 11:14:30 AM
 Modified: 4/10/2012 11:56:15 AM

Electropherogram Summary Continued ...



Overall Results for sample 9 : sample 9

Number of peaks found: 20 Corr. Area 1: 816.9
 Noise: 0.5

Peak table for sample 9 : sample 9

Peak	Size [bp]	Conc. [pg/μl]	Molarity [pmol/l]	Observations
1	35	125.00	5,411.3	Lower Marker
2	213	11.32	80.3	
3	253	17.80	106.7	
4	286	36.05	190.9	
5	304	33.03	164.5	
6	312	16.93	82.2	
7	320	16.99	80.4	
8	334	35.16	159.5	
9	374	35.78	145.0	
10	405	29.03	108.5	
11	460	35.47	116.9	
12	479	31.49	99.7	
13	548	34.71	96.0	
14	563	29.09	78.3	
15	598	44.04	111.7	
16	637	37.38	88.9	
17	660	32.78	75.2	
18	792	29.66	56.8	
19	892	28.53	48.5	
20	974	58.55	91.1	
21	1,318	23.93	27.5	
22	10,380	75.00	10.9	Upper Marker

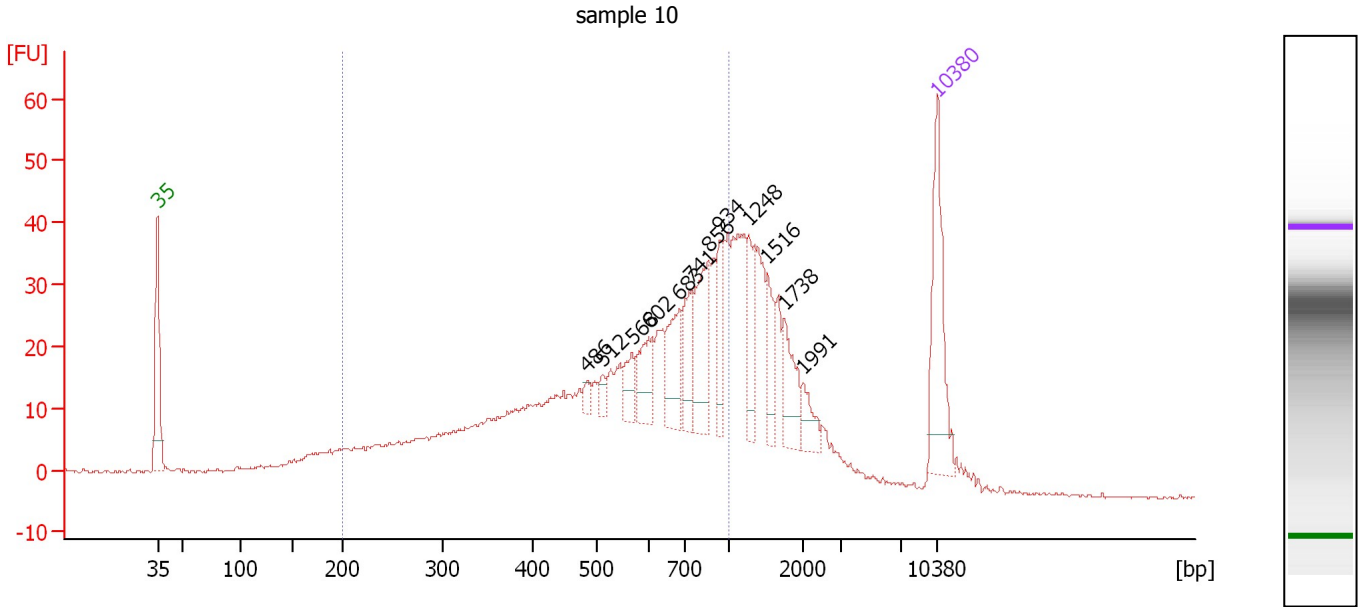
Region table for sample 9 : sample 9

From [bp]	Molarity [pmol/l]	Average Size [bp]	Conc. [pg/μl]	To [bp]	Corr. Area	% of Total	Size distribution in CV [%]	Color
200	4,717.5	508	1,261.07	1,000	816.9	82	38.2	Blue

Assay Class: High Sensitivity DNA Assay
 Data Path: C:\...ents and Settings\Bioanalyzer\2012-04-10\2012-04-10_003.xad

Created: 4/10/2012 11:14:30 AM
 Modified: 4/10/2012 11:56:15 AM

Electropherogram Summary Continued ...



Overall Results for sample 10 : sample 10

Number of peaks found: 12 Corr. Area 1: 645.2
 Noise: 0.2

Peak table for sample 10 : sample 10

Peak	Size [bp]	Conc. [pg/μl]	Molarity [pmol/l]	Observations
1	35	125.00	5,411.3	Lower Marker
2	486	8.36	26.1	
3	512	9.34	27.6	
4	568	21.50	57.3	
5	602	35.52	89.5	
6	683	49.00	108.6	
7	741	35.83	73.3	
8	856	63.76	112.8	
9	934	35.72	57.9	
10	1,248	39.20	47.6	
11	1,516	27.20	27.2	
12	1,738	36.98	32.2	
13	1,991	16.99	12.9	
14	10,380	75.00	10.9	Upper Marker

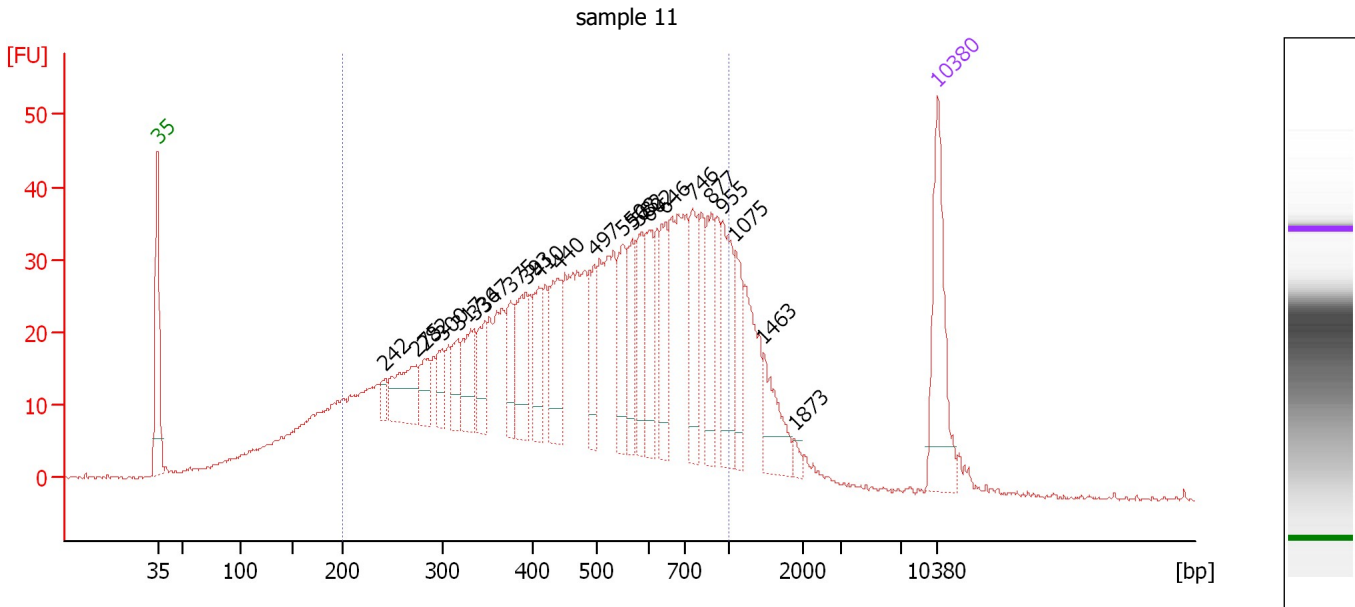
Region table for sample 10 : sample 10

From [bp]	Molarity [pmol/l]	Average Size [bp]	Conc. [pg/μl]	To [bp]	Corr. Area	% of Total	Size distribution in CV [%]	Color
200	3,845.2	577	1,156.51	1,000	645.2	67	36.6	Blue

Assay Class: High Sensitivity DNA Assay
 Data Path: C:\...ents and Settings\Bioanalyzer\2012-04-10\2012-04-10_003.xad

Created: 4/10/2012 11:14:30 AM
 Modified: 4/10/2012 11:56:15 AM

Electropherogram Summary Continued ...



Overall Results for sample 11 : sample 11

Number of peaks found: 23 Corr. Area 1: 1,143.9
 Noise: 0.2

Peak table for sample 11 : sample 11


Peak	Size [bp]	Conc. [pg/μl]	Molarity [pmol/l]	Observations
1	35	125.00	5,411.3	Lower Marker
2	242	12.82	80.1	
3	275	59.08	325.9	
4	282	26.27	141.2	
5	300	23.35	117.8	
6	317	29.10	138.9	
7	336	46.96	212.0	
8	347	33.42	145.8	
9	375	31.82	128.5	
10	393	62.73	241.9	
11	410	38.80	143.4	
12	440	60.92	209.6	
13	497	40.47	123.5	
14	550	45.26	124.6	
15	568	37.05	98.8	
16	582	46.60	121.3	
17	602	46.47	117.0	
18	646	48.12	112.9	
19	746	50.62	102.8	
20	877	52.17	90.1	
21	955	62.13	98.5	
22	1,075	35.44	50.0	
23	1,463	37.78	39.1	
24	1,873	4.76	3.8	
25	10,380	75.00	10.9	Upper Marker

Assay Class: High Sensitivity DNA Assay
Data Path: C:\...ents and Settings\Bioanalyzer\2012-04-10\2012-04-10_003.xad

Created: 4/10/2012 11:14:30 AM
Modified: 4/10/2012 11:56:15 AM

Electropherogram Summary Continued ...

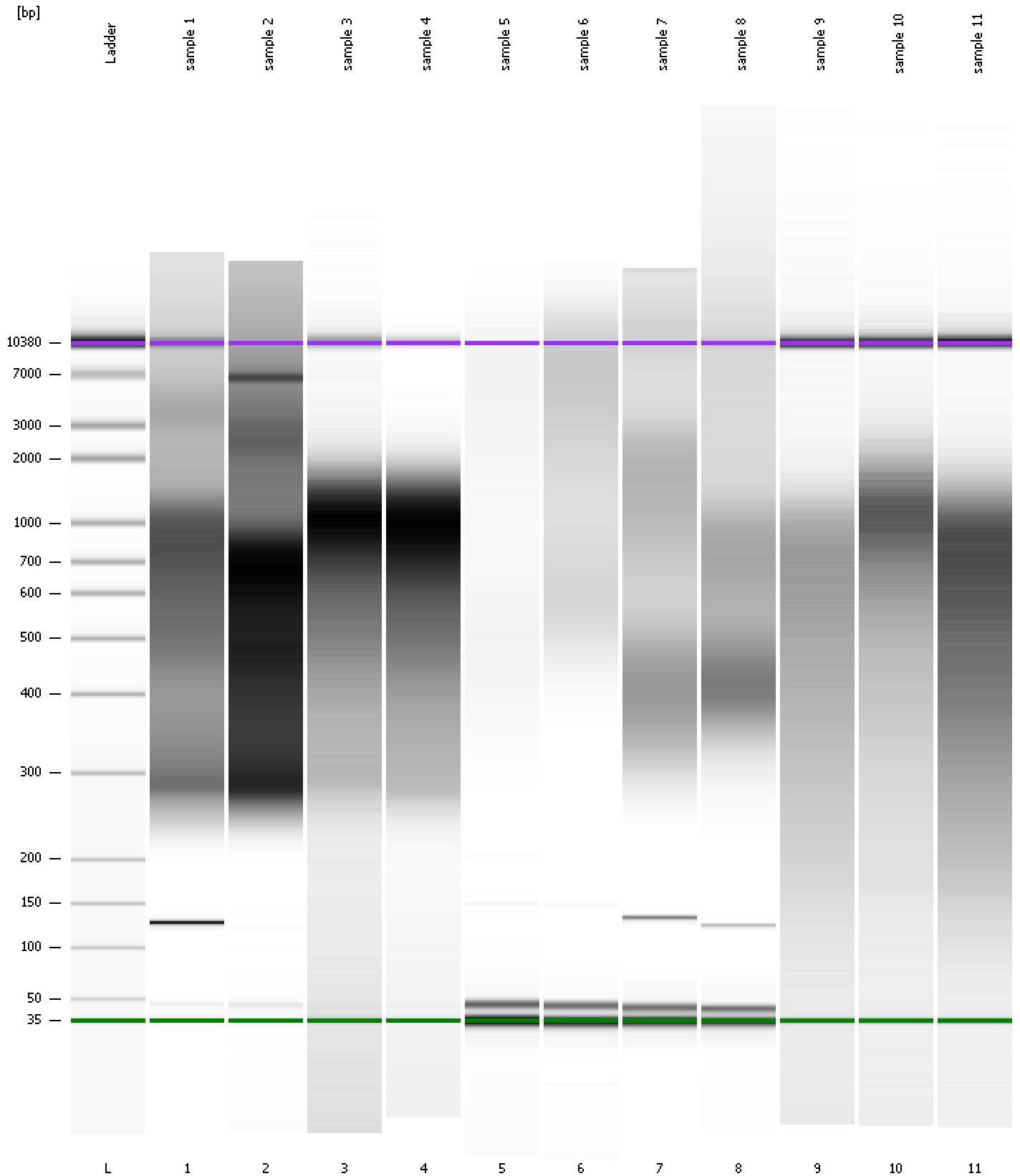
... Region table for sample 11 : sample 11

From [bp]	Molarity [pmol/l]	Average Size [bp]	Conc. [pg/μl]	To [bp]	Corr. Area	% of Total	Size distribution in CV [%]	Color
200	7,762.2	511	2,082.79	1,000	1,143.9	80	38.5	

Assay Class: High Sensitivity DNA Assay
Data Path: C:\...ents and Settings\Bioanalyzer\2012-04-10\2012-04-10_003.xad

Created: 4/10/2012 11:14:30 AM
Modified: 4/10/2012 11:56:15 AM

Gel Image



Assay Class: High Sensitivity DNA Assay
 Data Path: C:\...ents and Settings\Bioanalyzer\2012-04-10\2012-04-10_003.xad

Created: 4/10/2012 11:14:30 AM
 Modified: 4/10/2012 11:56:15 AM

Run Logbook

Description	Number	Source	Category	Sub Category	Time	Time Zone	User	Host
Run ended on port 1 (Number of wells acquired: 12)		Instrument	Run		4/10/2012 11:55:44 AM	(GMT --07:00) Pacific Standard Time	UC Davis	D8XSMGH1
Run started on port 1 (File: C:\Documents and Settings\Bioanalyzer\2012-04-10\2012-04-10_003.xad)		Instrument	Run		4/10/2012 11:14:31 AM	(GMT --07:00) Pacific Standard Time	UC Davis	D8XSMGH1
Product Number : G2938B		Instrument	Run		4/10/2012 11:14:31 AM	(GMT --07:00) Pacific Standard Time	UC Davis	D8XSMGH1
Name :		Instrument	Run		4/10/2012 11:14:31 AM	(GMT --07:00) Pacific Standard Time	UC Davis	D8XSMGH1
Vendor : Agilent Technologies		Instrument	Run		4/10/2012 11:14:31 AM	(GMT --07:00) Pacific Standard Time	UC Davis	D8XSMGH1
Serial# : DE13701086		Instrument	Run		4/10/2012 11:14:31 AM	(GMT --07:00) Pacific Standard Time	UC Davis	D8XSMGH1
Firmware : C.01.069		Instrument	Run		4/10/2012 11:14:31 AM	(GMT --07:00) Pacific Standard Time	UC Davis	D8XSMGH1
Cartridge : Electrode		Instrument	Run		4/10/2012 11:14:31 AM	(GMT --07:00) Pacific Standard Time	UC Davis	D8XSMGH1