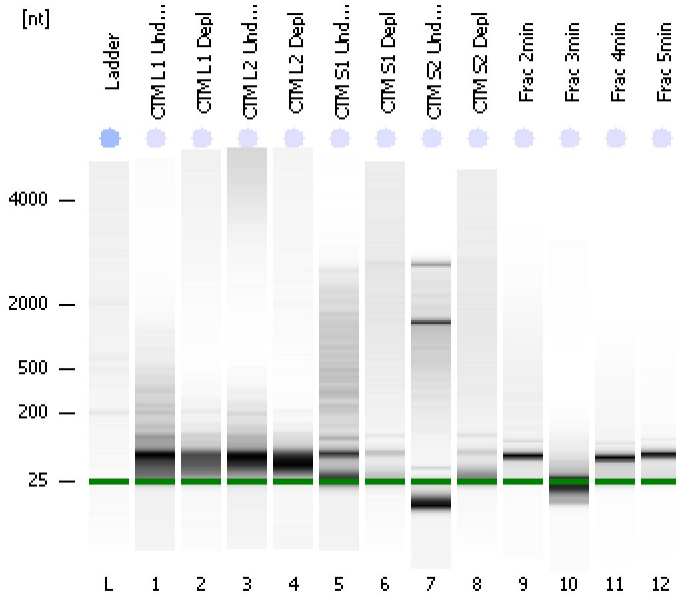


Assay Class: Eukaryote Total RNA Nano
Data Path: C:\...ents and Settings\Bioanalyzer\2012-04-10\2012-04-10_006.xad

Created: 4/10/2012 3:27:35 PM
Modified: 4/10/2012 3:51:25 PM

Electrophoresis File Run Summary



Instrument Information:

Instrument Name: DE13701086 Firmware: C.01.069
Serial#: DE13701086 Type: G2938B

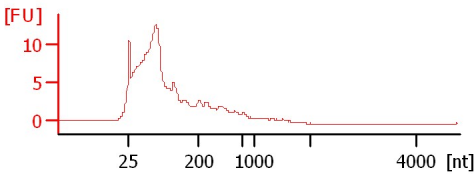
Assay Information:

Assay Origin Path: C:\Program Files\Agilent\2100 bioanalyzer\2100 expert\assays\RNA\Eukaryote Total RNA Nano Series II.xsy
Assay Class: Eukaryote Total RNA Nano
Version: 2.6
Assay Comments: Total RNA Analysis ng sensitivity (Eukaryote)
© Copyright 2003 - 2009 Agilent Technologies, Inc.

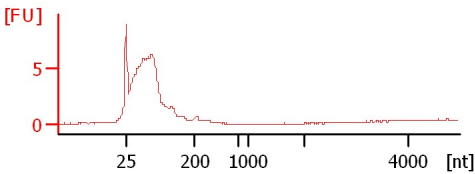
Chip Information:

Chip Lot #:
Reagent Kit Lot #:
Chip Comments:

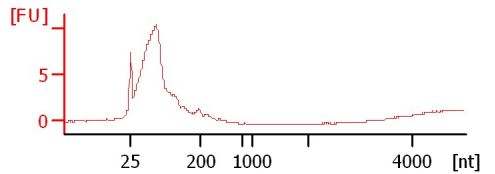
CTM L1 Undepl
RIN: 2.40



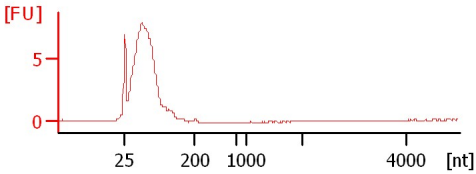
CTM L1 Depl
RIN: 2.60



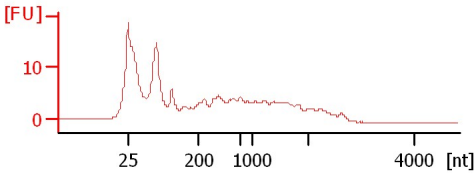
CTM L2 Undepl
RIN: 2.60



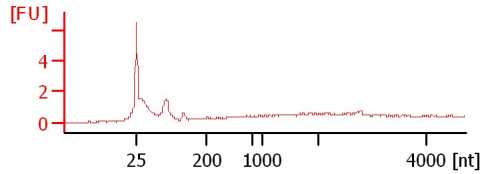
CTM L2 Depl
RIN: 2.70



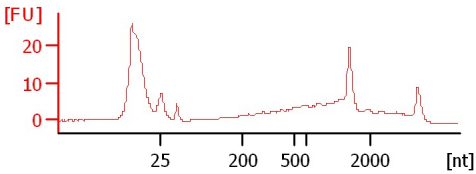
CTM S1 Undepl
RIN: 2.40



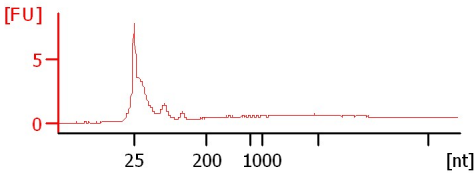
CTM S1 Depl
RIN: 2.10



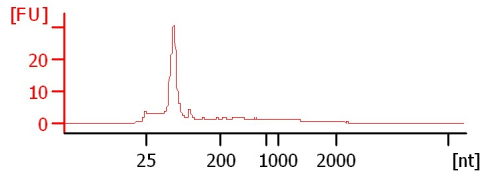
CTM S2 Undepl
RIN: 6.30



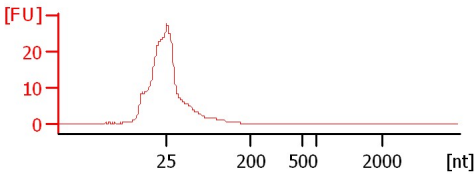
CTM S2 Depl
RIN: 1.80



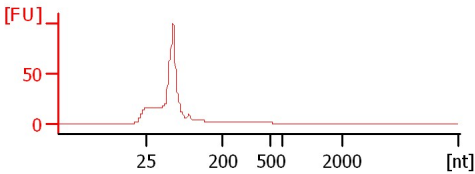
Frac 2min
RIN: 2.30



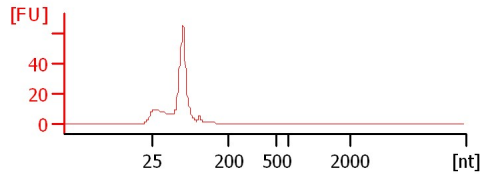
Frac 3min
RIN: 1.10



Frac 4min
RIN: 2.50



Frac 5min
RIN: 2.50



Assay Class: Eukaryote Total RNA Nano
Data Path: C:\...ents and Settings\Bioanalyzer\2012-04-10\2012-04-10_006.xad

Created: 4/10/2012 3:27:35 PM
Modified: 4/10/2012 3:51:25 PM

Electrophoresis File Run Summary (Chip Summary)

Sample Name	Sample Comment	Status	Result Label	Result Color
CTM L1 Undepl		✓	RIN: 2.40	
CTM L1 Depl		✓	RIN: 2.60	
CTM L2 Undepl		✓	RIN: 2.60	
CTM L2 Depl		✓	RIN: 2.70	
CTM S1 Undepl		✓	RIN: 2.40	
CTM S1 Depl		✓	RIN: 2.10	
CTM S2 Undepl		✓	RIN: 6.30	
CTM S2 Depl		✓	RIN: 1.80	
Frac 2min		✓	RIN: 2.30	
Frac 3min		✓	RIN: 1.10	
Frac 4min		✓	RIN: 2.50	
Frac 5min		✓	RIN: 2.50	
Ladder		✓	All Other Samples	

Chip Lot #

Reagent Kit Lot #

Chip Comments :

Assay Class: Eukaryote Total RNA Nano
Data Path: C:\...ents and Settings\Bioanalyzer\2012-04-10\2012-04-10_006.xad

Created: 4/10/2012 3:27:35 PM
Modified: 4/10/2012 3:51:25 PM

Electrophoresis Assay Details

General Analysis Settings

Number of Available Sample and Ladder Wells (Max.) : 13
Minimum Visible Range [s] : 17
Maximum Visible Range [s] : 70
Start Analysis Time Range [s] : 19
End Analysis Time Range [s] : 69
Ladder Concentration [ng/μl] : 150
Lower Marker Concentration [ng/μl] : 0
Upper Marker Concentration [ng/μl] : 0
Used Lower Marker for Quantitation
Standard Curve Fit is Logarithmic
Show Data Aligned to Lower Marker

Integrator Settings

Integration Start Time [s] : 19
Integration End Time [s] : 69
Slope Threshold : 0.6
Height Threshold [FU] : 0.5
Area Threshold : 0.2
Width Threshold [s] : 0.5
Baseline Plateau [s] : 6

Filter Settings

Filter Width [s] : 0.5
Polynomial Order : 4

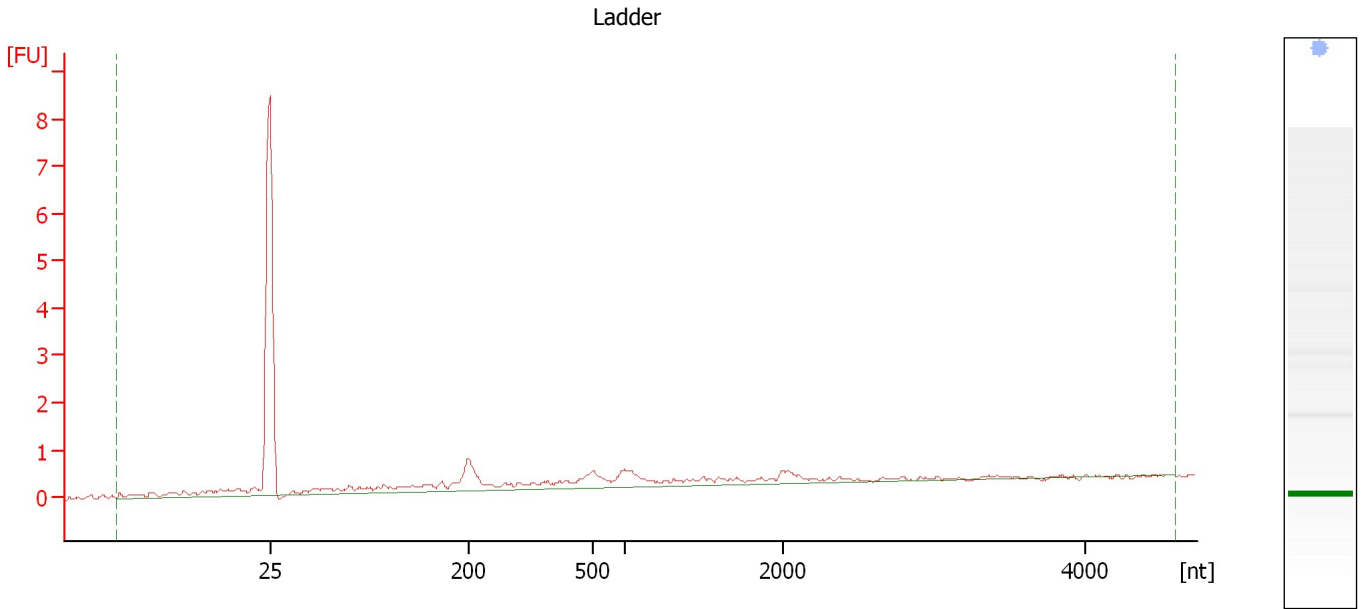
Ladder

Ladder Peak	Size
1	25
2	200
3	500
4	1000
5	2000
6	4000

Assay Class: Eukaryote Total RNA Nano
Data Path: C:\...ents and Settings\Bioanalyzer\2012-04-10\2012-04-10_006.xad

Created: 4/10/2012 3:27:35 PM
Modified: 4/10/2012 3:51:25 PM

Electropherogram Summary



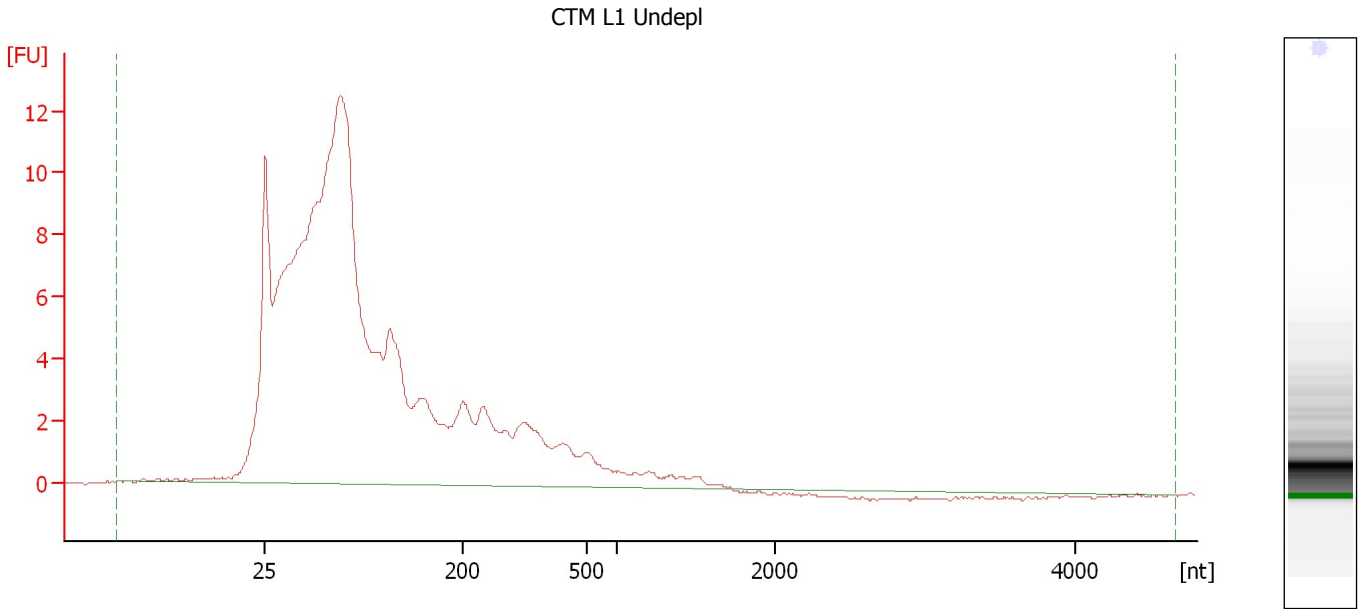
Overall Results for Ladder

RNA Area:	12.8	Result Flagging Color:	
RNA Concentration:	150 ng/μl	Result Flagging Label:	All Other Samples

Assay Class: Eukaryote Total RNA Nano
Data Path: C:\...ents and Settings\Bioanalyzer\2012-04-10\2012-04-10_006.xad

Created: 4/10/2012 3:27:35 PM
Modified: 4/10/2012 3:51:25 PM

Electropherogram Summary Continued ...



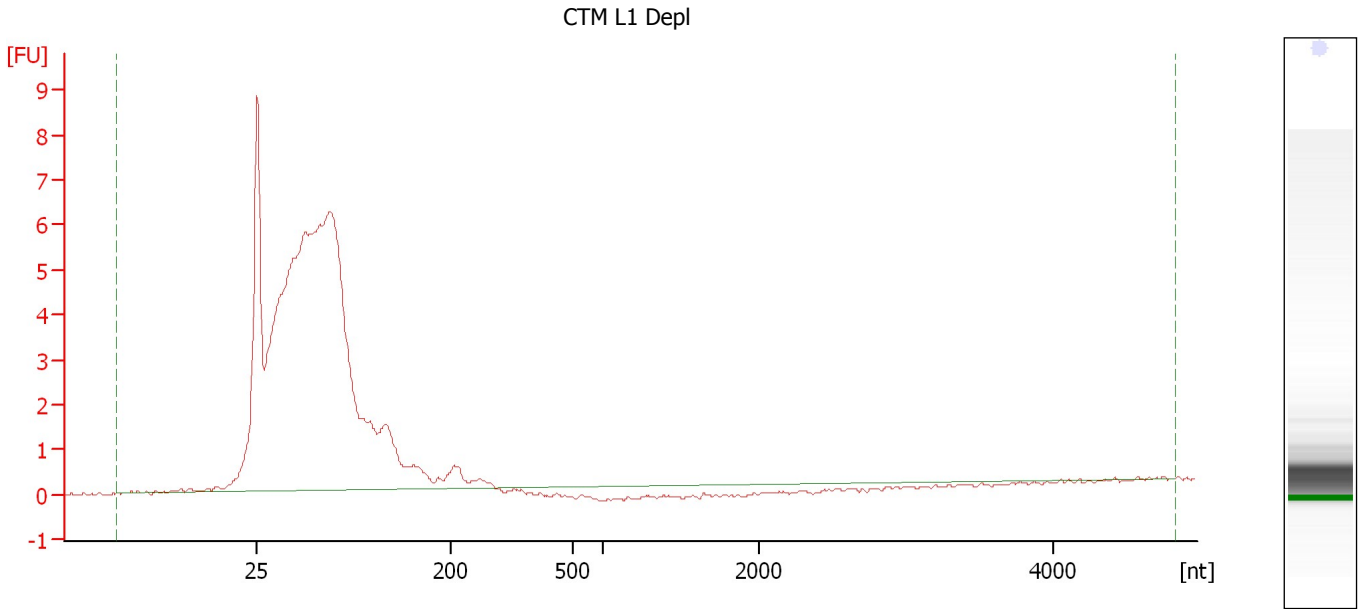
Overall Results for sample 1 : CTM L1 Undepl

RNA Area:	205.8	RNA Integrity Number (RIN):	2.4 (B.02.08)
RNA Concentration:	2,406 ng/μl	Result Flagging Color:	
rRNA Ratio [28s / 18s]:	0.0	Result Flagging Label:	RIN: 2.40

Assay Class: Eukaryote Total RNA Nano
Data Path: C:\...ents and Settings\Bioanalyzer\2012-04-10\2012-04-10_006.xad

Created: 4/10/2012 3:27:35 PM
Modified: 4/10/2012 3:51:25 PM

Electropherogram Summary Continued ...



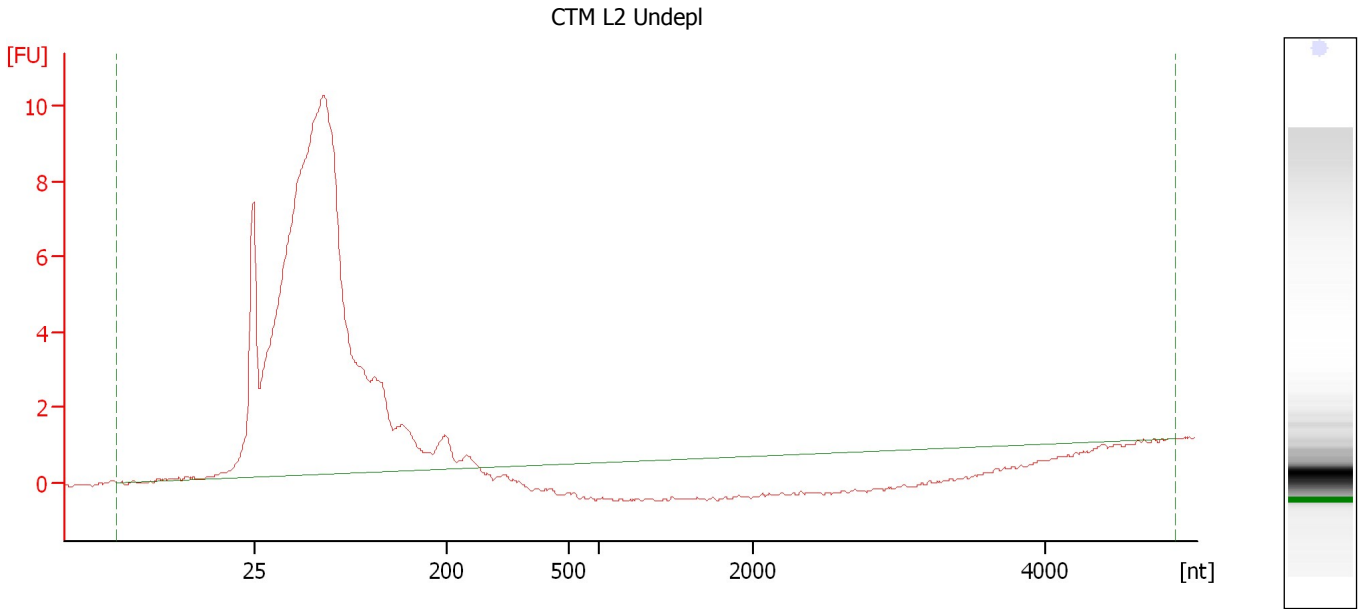
Overall Results for sample 2 : CTM L1 Depl

RNA Area:	85.6	RNA Integrity Number (RIN):	2.6 (B.02.08)
RNA Concentration:	1,001 ng/μl	Result Flagging Color:	
rRNA Ratio [28s / 18s]:	0.0	Result Flagging Label:	RIN: 2.60

Assay Class: Eukaryote Total RNA Nano
Data Path: C:\...ents and Settings\Bioanalyzer\2012-04-10\2012-04-10_006.xad

Created: 4/10/2012 3:27:35 PM
Modified: 4/10/2012 3:51:25 PM

Electropherogram Summary Continued ...



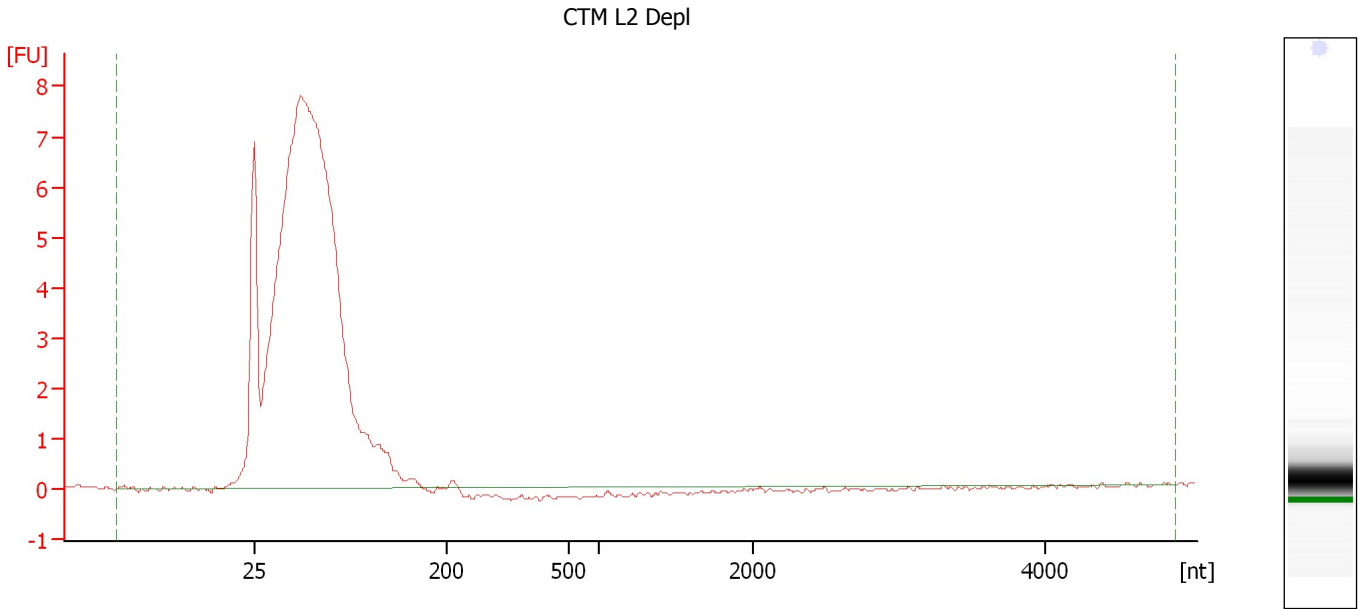
Overall Results for sample 3 : CTM L2 Undepl

RNA Area:	121.1	RNA Integrity Number (RIN):	2.6 (B.02.08)
RNA Concentration:	1,416 ng/μl	Result Flagging Color:	
rRNA Ratio [28s / 18s]:	0.0	Result Flagging Label:	RIN: 2.60

Assay Class: Eukaryote Total RNA Nano
Data Path: C:\...ents and Settings\Bioanalyzer\2012-04-10\2012-04-10_006.xad

Created: 4/10/2012 3:27:35 PM
Modified: 4/10/2012 3:51:25 PM

Electropherogram Summary Continued ...



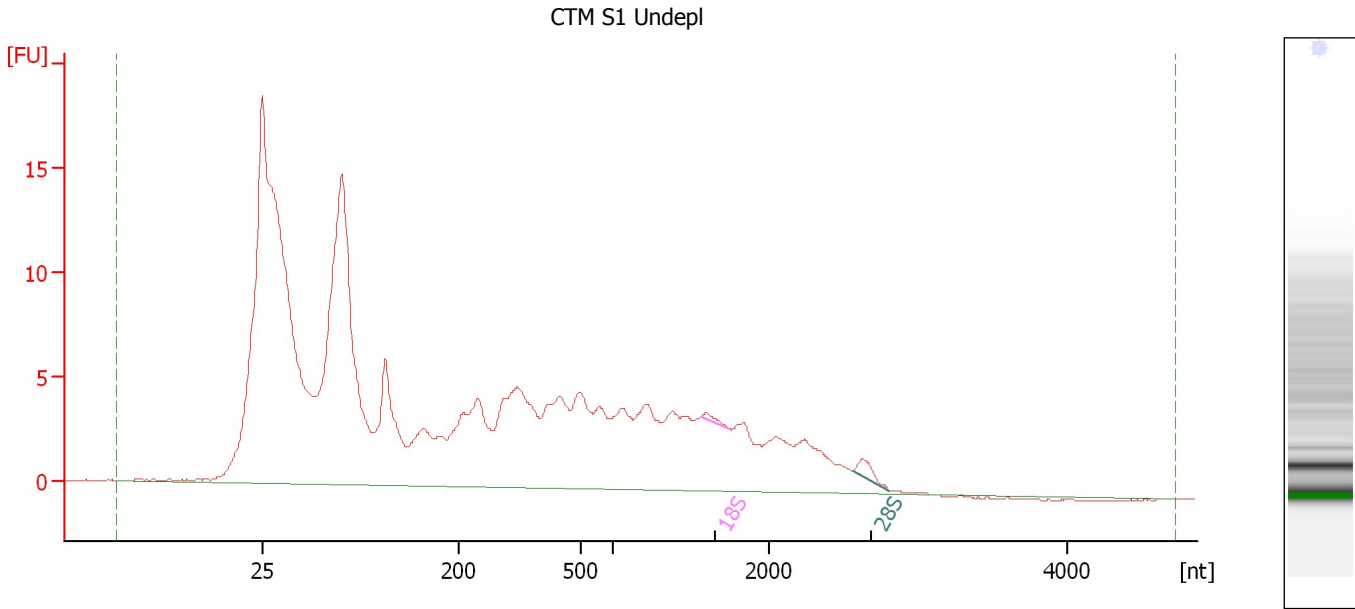
Overall Results for sample 4 : CTM L2 Depl

RNA Area:	86.9	RNA Integrity Number (RIN):	2.7 (B.02.08)
RNA Concentration:	1,016 ng/μl	Result Flagging Color:	
rRNA Ratio [28s / 18s]:	0.0	Result Flagging Label:	RIN: 2.70

Assay Class: Eukaryote Total RNA Nano
 Data Path: C:\...ents and Settings\Bioanalyzer\2012-04-10\2012-04-10_006.xad

Created: 4/10/2012 3:27:35 PM
 Modified: 4/10/2012 3:51:25 PM

Electropherogram Summary Continued ...



Overall Results for sample 5 : CTM S1 Undepl

RNA Area:	248.0	RNA Integrity Number (RIN):	2.4 (B.02.08)
RNA Concentration:	2,900 ng/μl	Result Flagging Color:	
rRNA Ratio [28s / 18s]:	2.4	Result Flagging Label:	RIN: 2.40

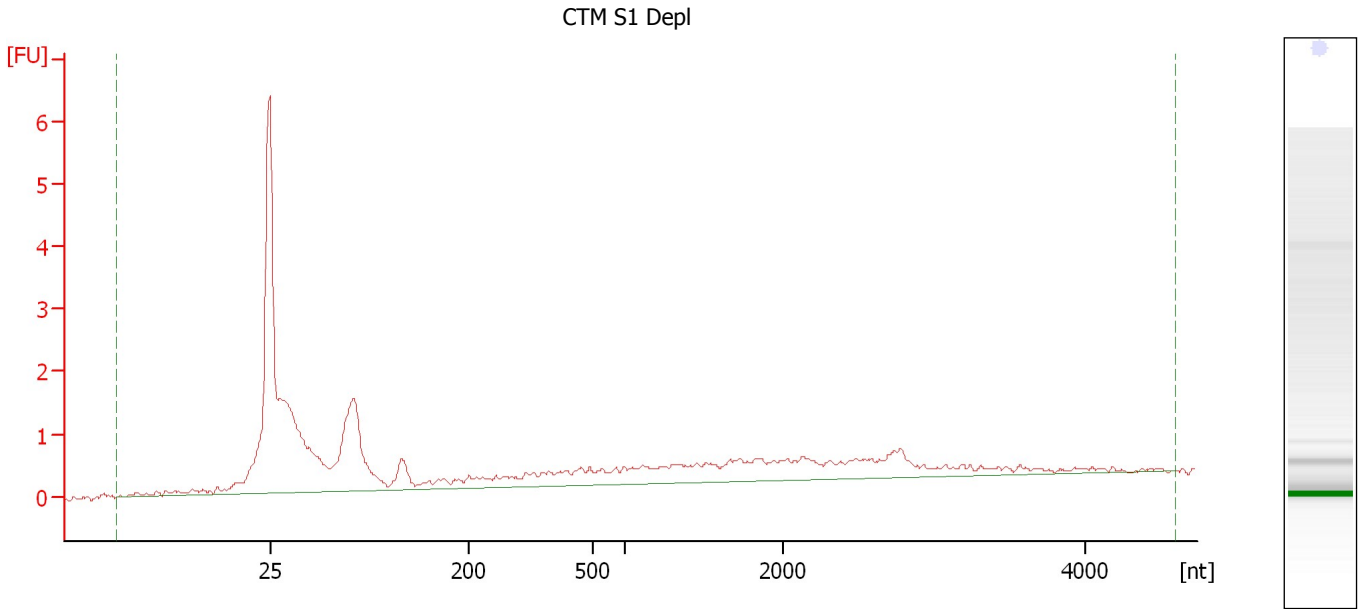
Fragment table for sample 5 : CTM S1 Undepl

Name	Start Size [nt]	End Size [nt]	Area	% of total Area
18S	1,563	1,748	0.5	0.2
28S	2,560	2,811	1.2	0.5

Assay Class: Eukaryote Total RNA Nano
Data Path: C:\...ents and Settings\Bioanalyzer\2012-04-10\2012-04-10_006.xad

Created: 4/10/2012 3:27:35 PM
Modified: 4/10/2012 3:51:25 PM

Electropherogram Summary Continued ...



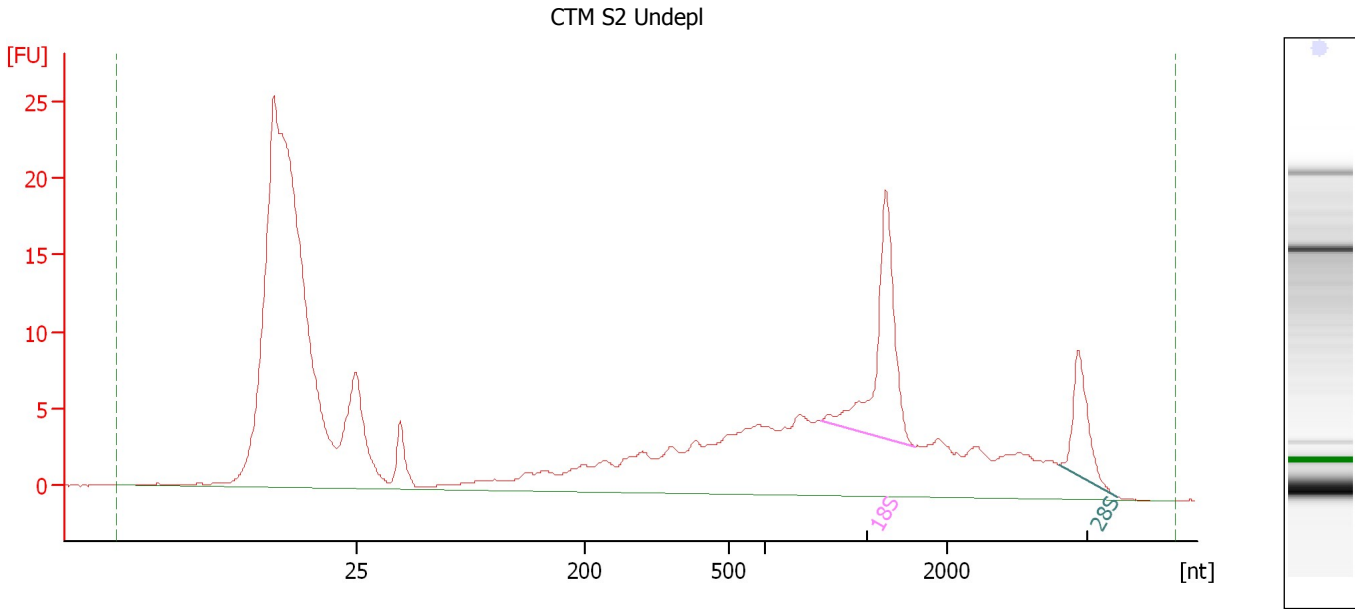
Overall Results for sample 6 : CTM S1 Depl

RNA Area:	30.5	RNA Integrity Number (RIN):	2.1 (B.02.08)
RNA Concentration:	357 ng/μl	Result Flagging Color:	
rRNA Ratio [28s / 18s]:	0.0	Result Flagging Label:	RIN: 2.10

Assay Class: Eukaryote Total RNA Nano
Data Path: C:\...ents and Settings\Bioanalyzer\2012-04-10\2012-04-10_006.xad

Created: 4/10/2012 3:27:35 PM
Modified: 4/10/2012 3:51:25 PM

Electropherogram Summary Continued ...



Overall Results for sample 7 : CTM S2 Undepl

RNA Area: 399.0 RNA Integrity Number (RIN): 6.3 (B.02.08)
RNA Concentration: 4,665 ng/μl Result Flagging Color:
rRNA Ratio [28s / 18s]: 0.4 Result Flagging Label: RIN: 6.30

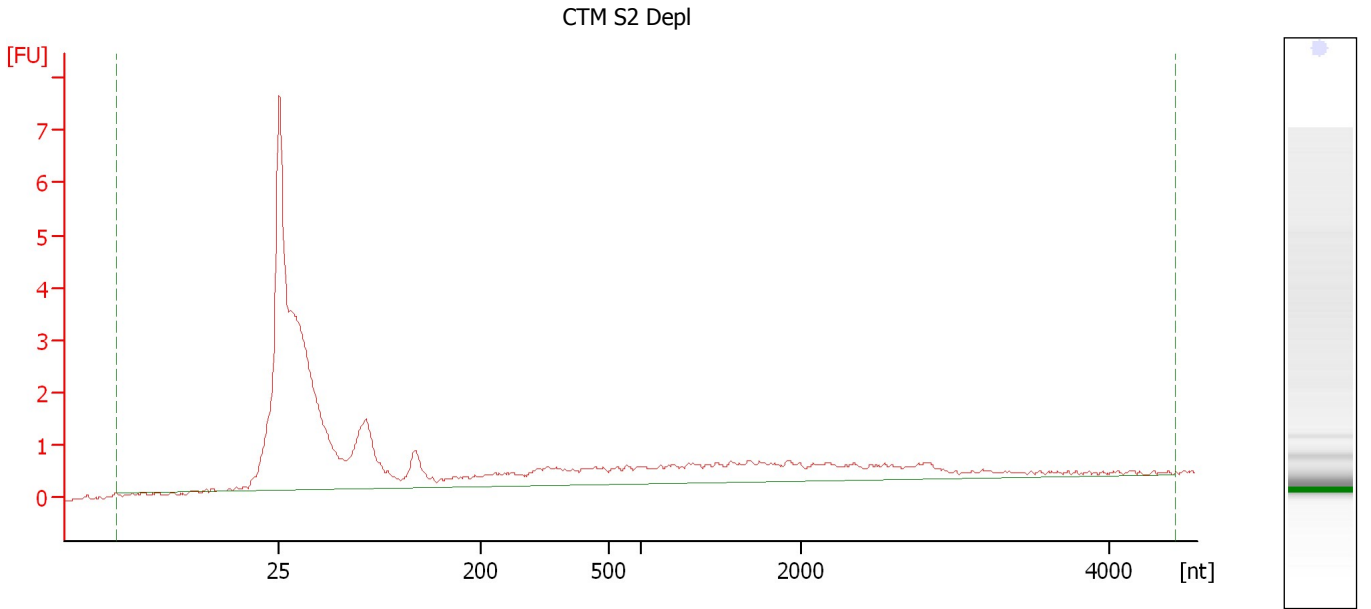
Fragment table for sample 7 : CTM S2 Undepl

Name	Start Size [nt]	End Size [nt]	Area	% of total Area
18S	1,308	1,818	27.8	7.0
28S	2,638	2,975	10.1	2.5

Assay Class: Eukaryote Total RNA Nano
Data Path: C:\...ents and Settings\Bioanalyzer\2012-04-10\2012-04-10_006.xad

Created: 4/10/2012 3:27:35 PM
Modified: 4/10/2012 3:51:25 PM

Electropherogram Summary Continued ...



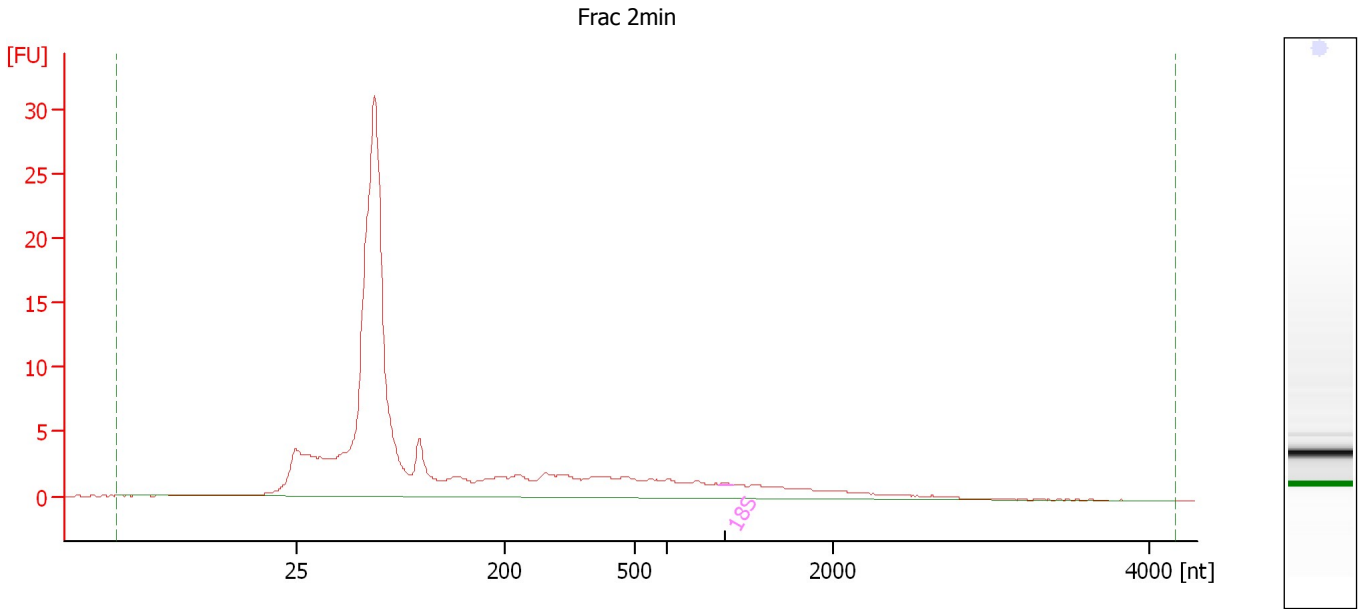
Overall Results for sample 8 : CTM S2 Depl

RNA Area:	25.3	RNA Integrity Number (RIN):	1.8 (B.02.08)
RNA Concentration:	296 ng/μl	Result Flagging Color:	
rRNA Ratio [28s / 18s]:	0.0	Result Flagging Label:	RIN: 1.80

Assay Class: Eukaryote Total RNA Nano
Data Path: C:\...ents and Settings\Bioanalyzer\2012-04-10\2012-04-10_006.xad

Created: 4/10/2012 3:27:35 PM
Modified: 4/10/2012 3:51:25 PM

Electropherogram Summary Continued ...



Overall Results for sample 9 : Frac 2min

RNA Area:	201.1	RNA Integrity Number (RIN):	2.3 (B.02.08)
RNA Concentration:	2,352 ng/μl	Result Flagging Color:	
rRNA Ratio [28s / 18s]:	0.0	Result Flagging Label:	RIN: 2.30

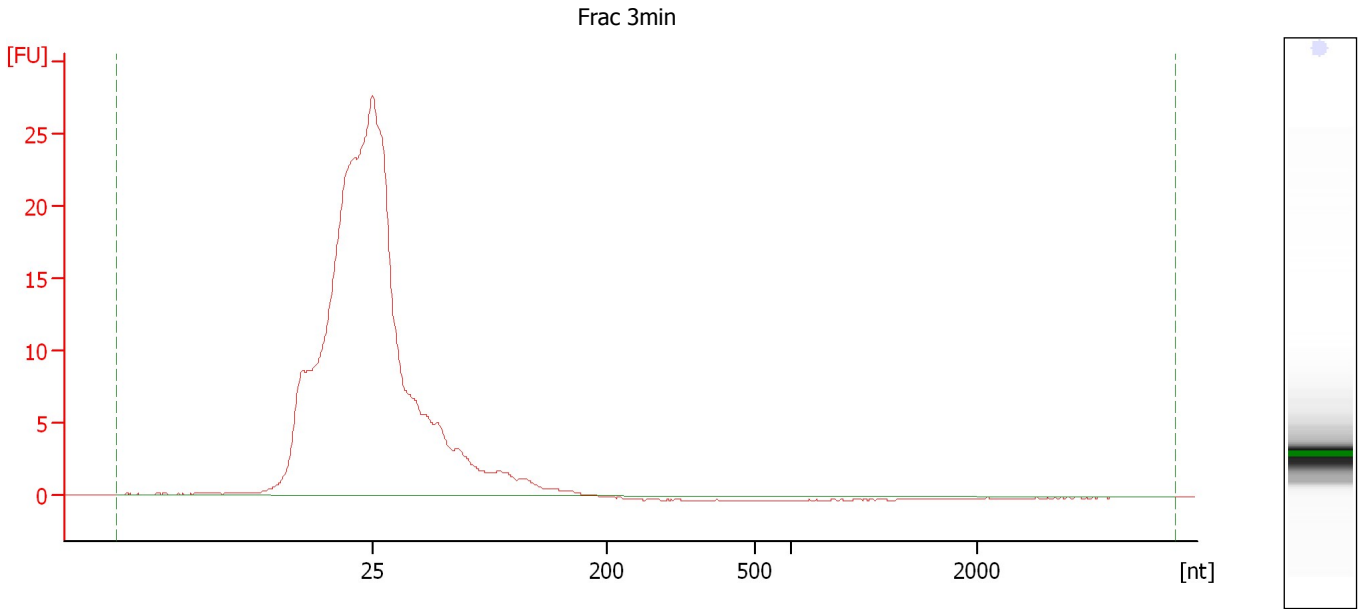
Fragment table for sample 9 : Frac 2min

Name	Start Size [nt]	End Size [nt]	Area	% of total Area
18S	1,306	1,390	0.1	0.0

Assay Class: Eukaryote Total RNA Nano
Data Path: C:\...ents and Settings\Bioanalyzer\2012-04-10\2012-04-10_006.xad

Created: 4/10/2012 3:27:35 PM
Modified: 4/10/2012 3:51:25 PM

Electropherogram Summary Continued ...



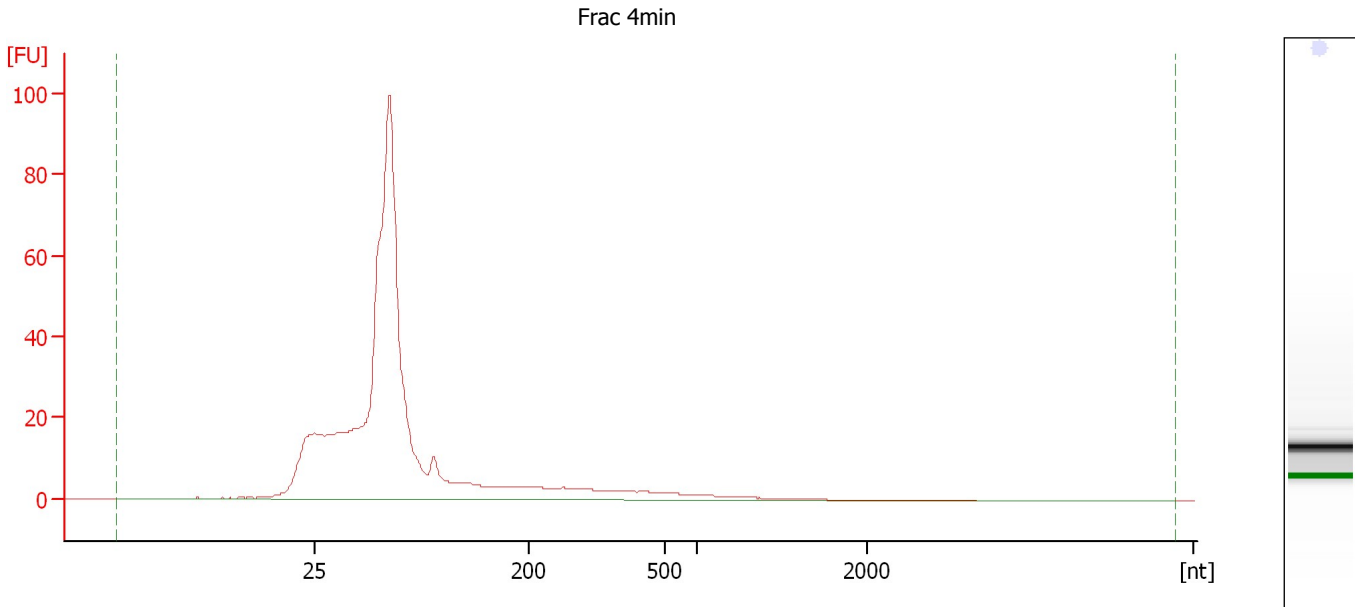
Overall Results for sample 10 : Frac 3min

RNA Area:	22.3	RNA Integrity Number (RIN):	1.1 (B.02.08)
RNA Concentration:	260 ng/μl	Result Flagging Color:	
rRNA Ratio [28s / 18s]:	0.0	Result Flagging Label:	RIN: 1.10

Assay Class: Eukaryote Total RNA Nano
Data Path: C:\...ents and Settings\Bioanalyzer\2012-04-10\2012-04-10_006.xad

Created: 4/10/2012 3:27:35 PM
Modified: 4/10/2012 3:51:25 PM

Electropherogram Summary Continued ...



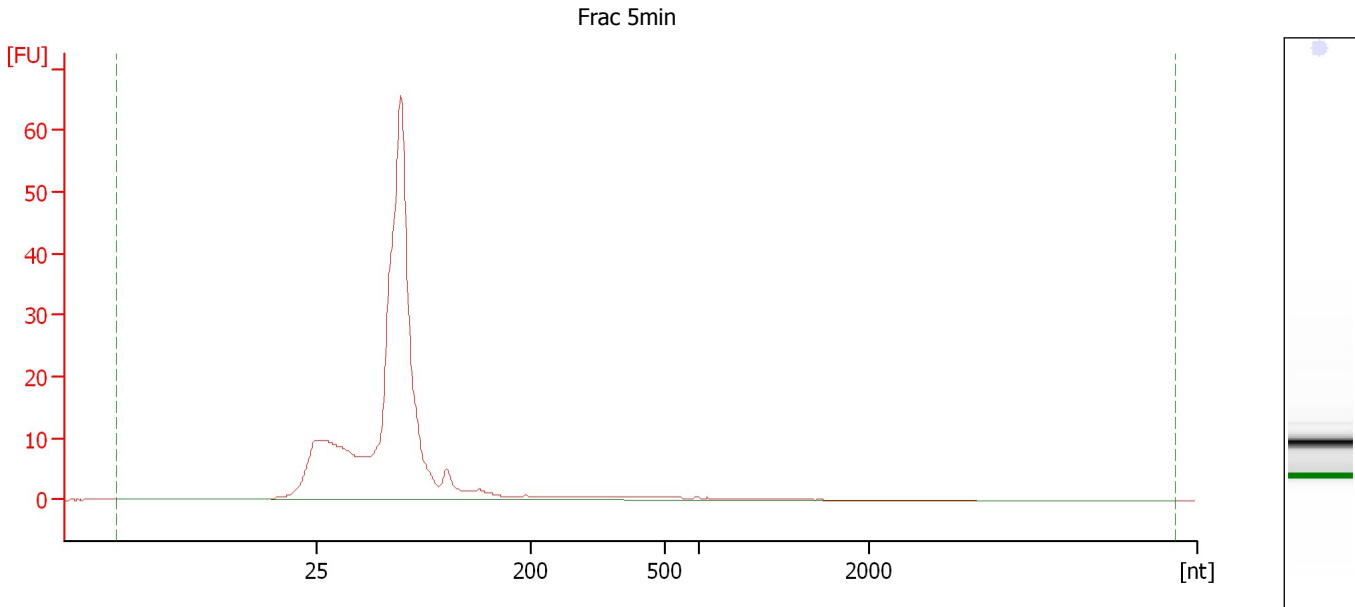
Overall Results for sample 11 : Frac 4min

RNA Area:	569.4	RNA Integrity Number (RIN):	2.5 (B.02.08)
RNA Concentration:	6,658 ng/μl	Result Flagging Color:	
rRNA Ratio [28s / 18s]:	0.0	Result Flagging Label:	RIN: 2.50

Assay Class: Eukaryote Total RNA Nano
Data Path: C:\...ents and Settings\Bioanalyzer\2012-04-10\2012-04-10_006.xad

Created: 4/10/2012 3:27:35 PM
Modified: 4/10/2012 3:51:25 PM

Electropherogram Summary Continued ...



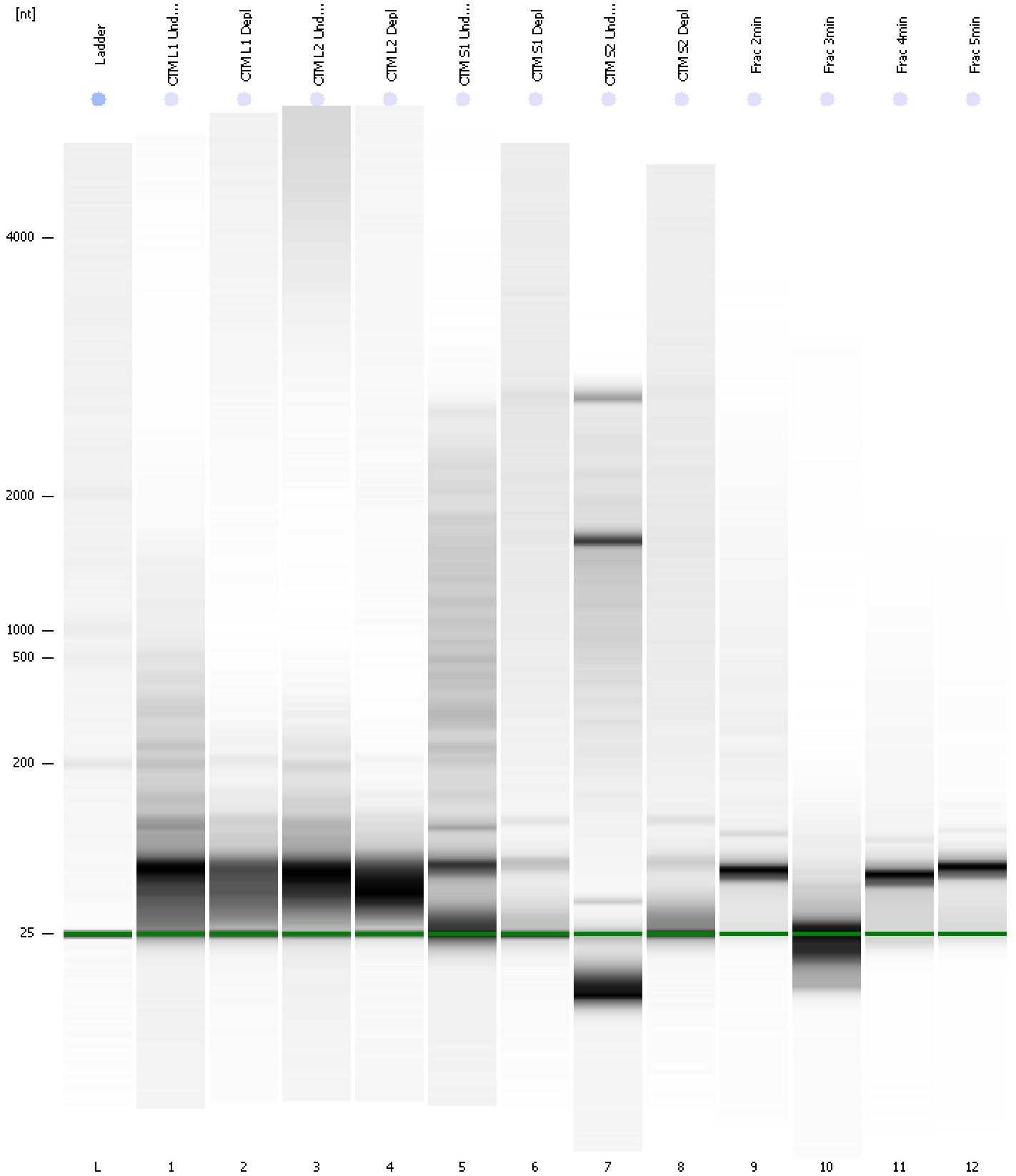
Overall Results for sample 12 : Frac 5min

RNA Area:	264.4	RNA Integrity Number (RIN):	2.5 (B.02.08)
RNA Concentration:	3,092 ng/μl	Result Flagging Color:	
rRNA Ratio [28s / 18s]:	0.0	Result Flagging Label:	RIN: 2.50

Assay Class: Eukaryote Total RNA Nano
Data Path: C:\...ents and Settings\Bioanalyzer\2012-04-10\2012-04-10_006.xad

Created: 4/10/2012 3:27:35 PM
Modified: 4/10/2012 3:51:25 PM

Gel Image



Assay Class: Eukaryote Total RNA Nano
 Data Path: C:\...ents and Settings\Bioanalyzer\2012-04-10\2012-04-10_006.xad

Created: 4/10/2012 3:27:35 PM
 Modified: 4/10/2012 3:51:25 PM

Run Logbook

Description	Number	Source	Category	Sub Category	Time	Time Zone	User	Host
Run ended on port 1 (Number of wells acquired: 13)		Instrument	Run		4/10/2012 3:51:22 PM	(GMT --07:00) Pacific Standard Time	UC Davis	D8XSMGH1
Run started on port 1 (File: C:\Documents and Settings\Bioanalyzer\2012-04-10\2012-04-10_006.xad)		Instrument	Run		4/10/2012 3:27:40 PM	(GMT --07:00) Pacific Standard Time	UC Davis	D8XSMGH1
Product Number : G2938B		Instrument	Run		4/10/2012 3:27:40 PM	(GMT --07:00) Pacific Standard Time	UC Davis	D8XSMGH1
Name :		Instrument	Run		4/10/2012 3:27:40 PM	(GMT --07:00) Pacific Standard Time	UC Davis	D8XSMGH1
Vendor : Agilent Technologies		Instrument	Run		4/10/2012 3:27:40 PM	(GMT --07:00) Pacific Standard Time	UC Davis	D8XSMGH1
Serial# : DE13701086		Instrument	Run		4/10/2012 3:27:40 PM	(GMT --07:00) Pacific Standard Time	UC Davis	D8XSMGH1
Firmware : C.01.069		Instrument	Run		4/10/2012 3:27:40 PM	(GMT --07:00) Pacific Standard Time	UC Davis	D8XSMGH1
Cartridge : Electrode		Instrument	Run		4/10/2012 3:27:40 PM	(GMT --07:00) Pacific Standard Time	UC Davis	D8XSMGH1