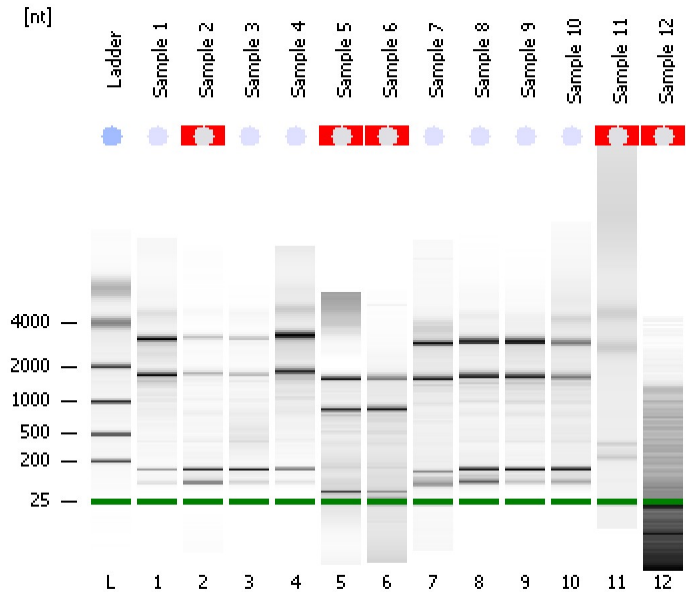


Assay Class: Eukaryote Total RNA Nano  
Data Path: C:\...ents and Settings\Bioanalyzer\2012-04-10\2012-04-10\_007.xad

Created: 4/10/2012 4:49:52 PM  
Modified: 4/10/2012 5:45:44 PM

Electrophoresis File Run Summary



Instrument Information:

Instrument Name: DE13701086      Firmware: C.01.069  
Serial#: DE13701086      Type: G2938B

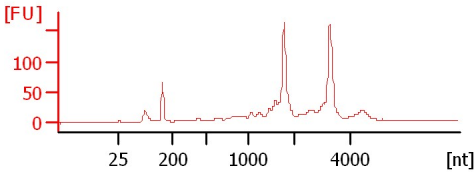
Assay Information:

Assay Origin Path: C:\Program Files\Agilent\2100 bioanalyzer\2100 expert\assays\RNA\Eukaryote Total RNA Nano Series II.xsy  
Assay Class: Eukaryote Total RNA Nano  
Version: 2.6  
Assay Comments: Total RNA Analysis ng sensitivity (Eukaryote)  
© Copyright 2003 - 2009 Agilent Technologies, Inc.

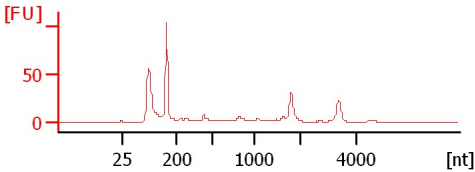
Chip Information:

Chip Lot #:   
Reagent Kit Lot #:   
Chip Comments:

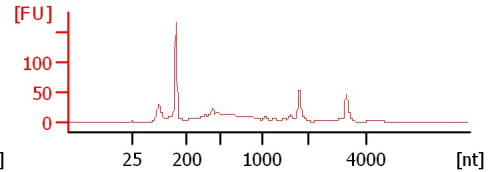
**Sample 1**  
RIN: 7.50



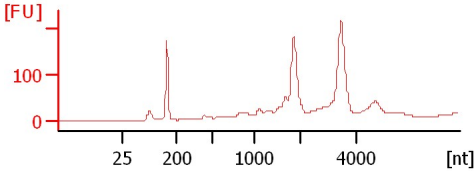
**Sample 2**  
RIN N/A



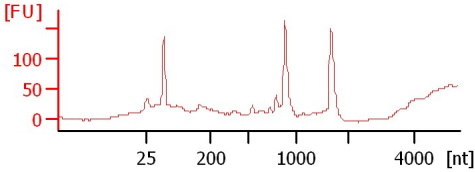
**Sample 3**  
RIN: 4.50



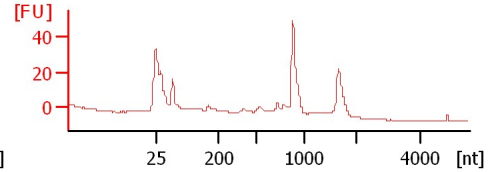
**Sample 4**  
RIN: 7.90



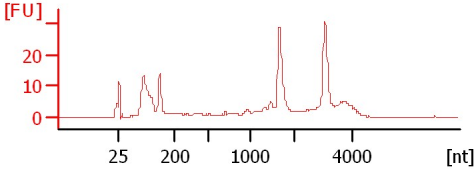
**Sample 5**  
RIN N/A



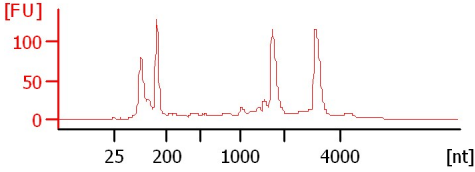
**Sample 6**  
RIN N/A



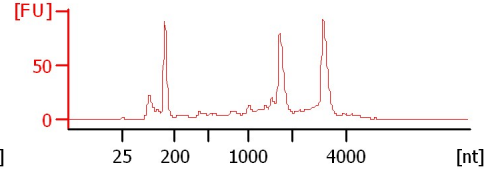
**Sample 7**  
RIN: 7.70



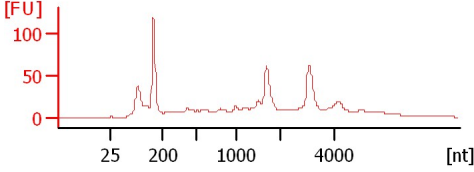
**Sample 8**  
RIN: 7.40



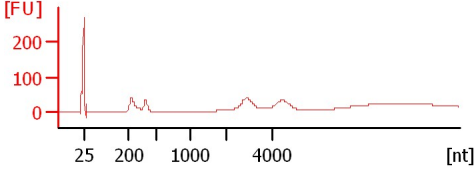
**Sample 9**  
RIN: 7.30



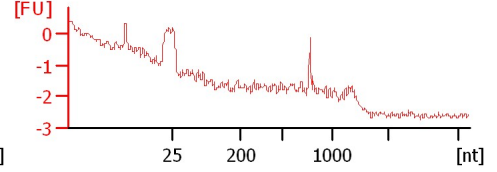
**Sample 10**  
RIN: 6.10



**Sample 11**  
RIN N/A



**Sample 12**  
RIN N/A



Assay Class: Eukaryote Total RNA Nano  
 Data Path: C:\...ents and Settings\Bioanalyzer\2012-04-10\2012-04-10\_007.xad

Created: 4/10/2012 4:49:52 PM  
 Modified: 4/10/2012 5:45:44 PM

**Electrophoresis File Run Summary (Chip Summary)**

Sample Name	Sample Comment	Status	Result Label	Result Color
Sample 1		✓	RIN: 7.50	
Sample 2		✓	RIN N/A	
Sample 3		✓	RIN: 4.50	
Sample 4		✓	RIN: 7.90	
Sample 5		✓	RIN N/A	
Sample 6		✓	RIN N/A	
Sample 7		✓	RIN: 7.70	
Sample 8		✓	RIN: 7.40	
Sample 9		✓	RIN: 7.30	
Sample 10		✓	RIN: 6.10	
Sample 11		✓	RIN N/A	
Sample 12		✓	RIN N/A	
Ladder		✓	All Other Samples	

**Chip Lot #**

**Reagent Kit Lot #**

**Chip Comments :**

Assay Class: Eukaryote Total RNA Nano  
Data Path: C:\...ents and Settings\Bioanalyzer\2012-04-10\2012-04-10\_007.xad

Created: 4/10/2012 4:49:52 PM  
Modified: 4/10/2012 5:45:44 PM

## Electrophoresis Assay Details

### General Analysis Settings

Number of Available Sample and Ladder Wells (Max.) : 13  
Minimum Visible Range [s] : 17  
Maximum Visible Range [s] : 70  
Start Analysis Time Range [s] : 19  
End Analysis Time Range [s] : 69  
Ladder Concentration [ng/μl] : 150  
Lower Marker Concentration [ng/μl] : 0  
Upper Marker Concentration [ng/μl] : 0  
Used Lower Marker for Quantitation  
Standard Curve Fit is Logarithmic  
Show Data Aligned to Lower Marker

### Integrator Settings

Integration Start Time [s] : 19  
Integration End Time [s] : 69  
Slope Threshold : 0.6  
Height Threshold [FU] : 0.5  
Area Threshold : 0.2  
Width Threshold [s] : 0.5  
Baseline Plateau [s] : 6

### Filter Settings

Filter Width [s] : 0.5  
Polynomial Order : 4

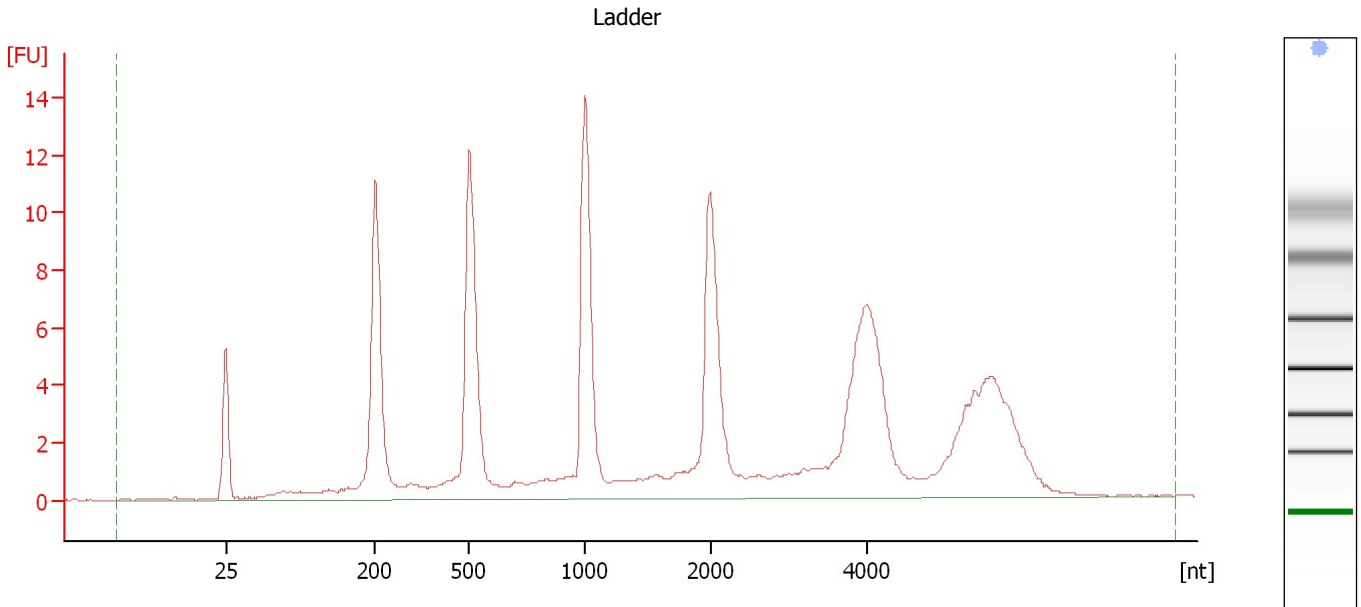
### Ladder

Ladder Peak	Size
1	25
2	200
3	500
4	1000
5	2000
6	4000

Assay Class: Eukaryote Total RNA Nano  
Data Path: C:\...ents and Settings\Bioanalyzer\2012-04-10\2012-04-10\_007.xad

Created: 4/10/2012 4:49:52 PM  
Modified: 4/10/2012 5:45:44 PM

**Electropherogram Summary**



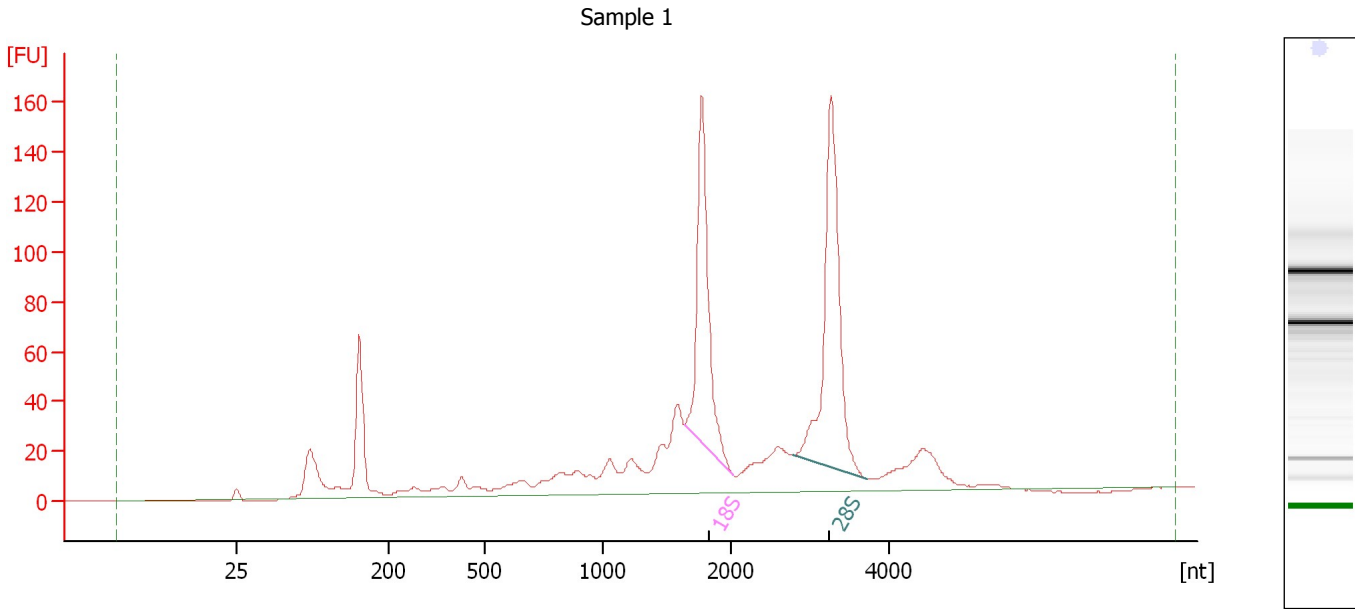
**Overall Results for Ladder**

RNA Area:	148.0	Result Flagging Color:	<span style="background-color: #add8e6; border: 1px solid black; display: inline-block; width: 20px; height: 10px;"></span>
RNA Concentration:	150 ng/μl	Result Flagging Label:	All Other Samples

Assay Class: Eukaryote Total RNA Nano  
Data Path: C:\...ents and Settings\Bioanalyzer\2012-04-10\2012-04-10\_007.xad

Created: 4/10/2012 4:49:52 PM  
Modified: 4/10/2012 5:45:44 PM

**Electropherogram Summary Continued ...**



**Overall Results for sample 1 : Sample 1**

RNA Area:	1,122.2	RNA Integrity Number (RIN):	7.5 (B.02.08)
RNA Concentration:	1,137 ng/μl	Result Flagging Color:	<span style="background-color: #ccccff; border: 1px solid black; display: inline-block; width: 20px; height: 10px;"></span>
rRNA Ratio [28s / 18s]:	1.2	Result Flagging Label:	RIN: 7.50

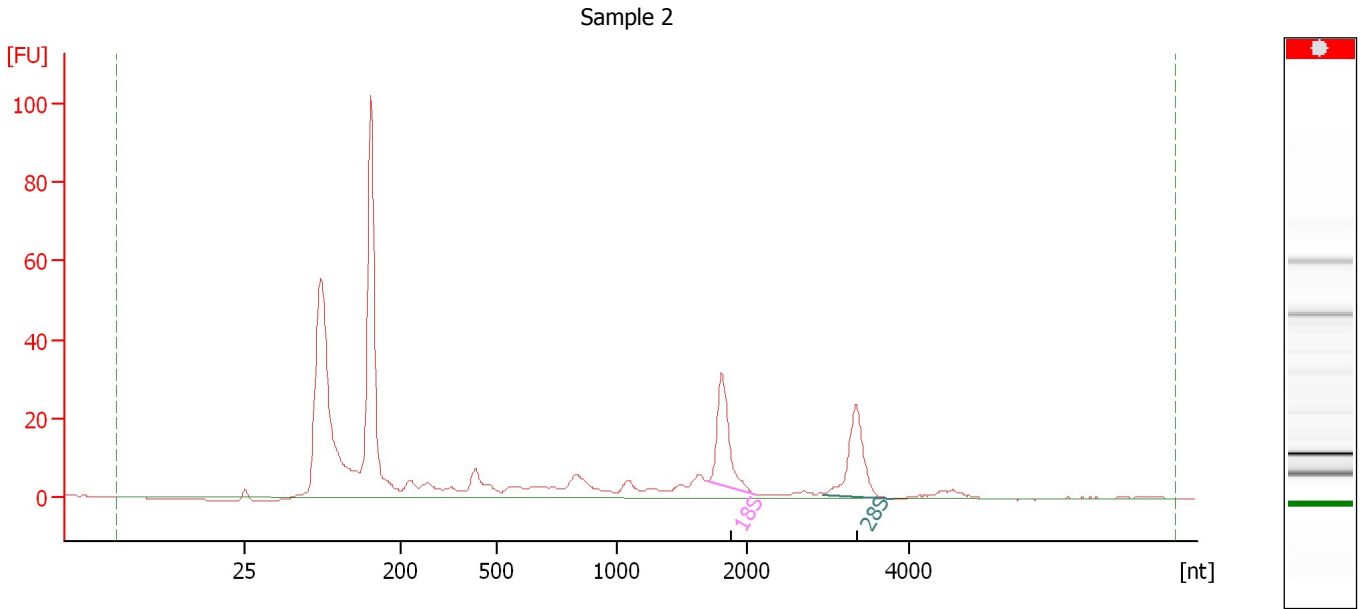
**Fragment table for sample 1 : Sample 1**

Name	Start Size [nt]	End Size [nt]	Area	% of total Area
18S	1,638	2,024	180.6	16.1
28S	2,775	3,715	225.4	20.1

Assay Class: Eukaryote Total RNA Nano  
 Data Path: C:\...ents and Settings\Bioanalyzer\2012-04-10\2012-04-10\_007.xad

Created: 4/10/2012 4:49:52 PM  
 Modified: 4/10/2012 5:45:44 PM

**Electropherogram Summary Continued ...**



**Overall Results for sample 2 : Sample 2**

RNA Area:	508.6	RNA Integrity Number (RIN):	N/A (B.02.08)
RNA Concentration:	515 ng/μl	Result Flagging Color:	<span style="background-color: #cccccc; border: 1px solid black; display: inline-block; width: 20px; height: 10px;"></span>
rRNA Ratio [28s / 18s]:	0.9	Result Flagging Label:	RIN N/A

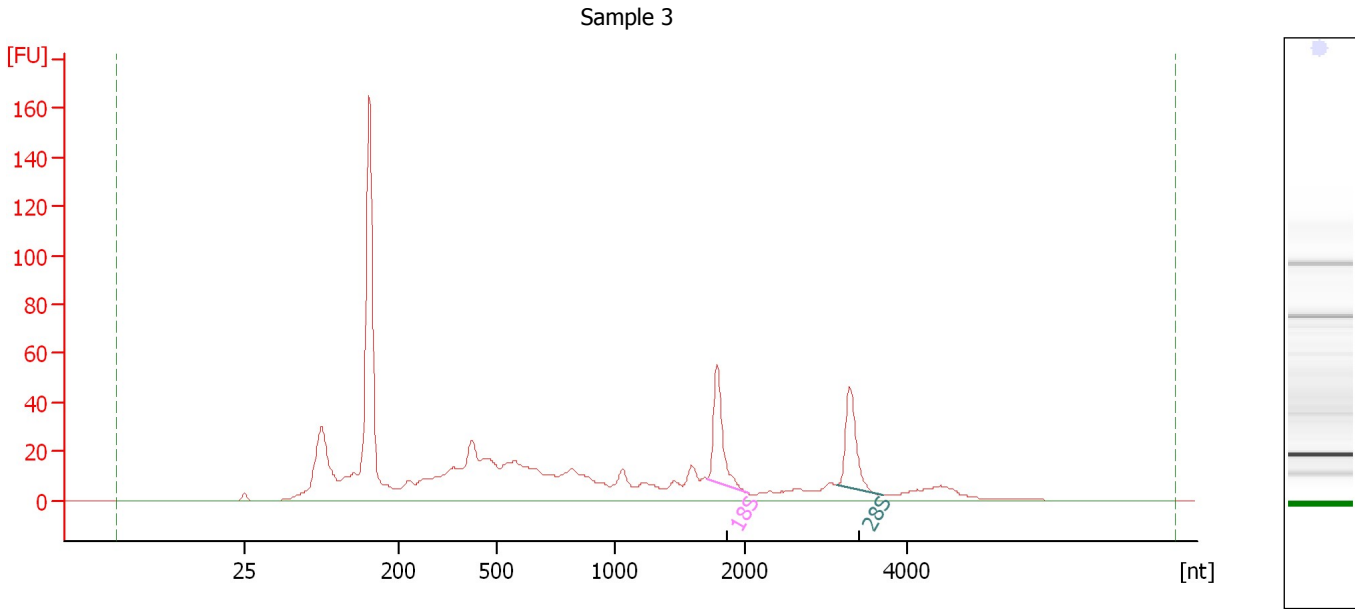
**Fragment table for sample 2 : Sample 2**

Name	Start Size [nt]	End Size [nt]	Area	% of total Area
18S	1,698	2,124	36.9	7.3
28S	2,943	3,802	34.4	6.8

Assay Class: Eukaryote Total RNA Nano  
Data Path: C:\...ents and Settings\Bioanalyzer\2012-04-10\2012-04-10\_007.xad

Created: 4/10/2012 4:49:52 PM  
Modified: 4/10/2012 5:45:44 PM

**Electropherogram Summary Continued ...**



**Overall Results for sample 3 : Sample 3**

RNA Area: 939.8                      RNA Integrity Number (RIN): 4.5 (B.02.08)  
RNA Concentration: 952 ng/μl              Result Flagging Color:   
rRNA Ratio [28s / 18s]: 0.8              Result Flagging Label: RIN: 4.50

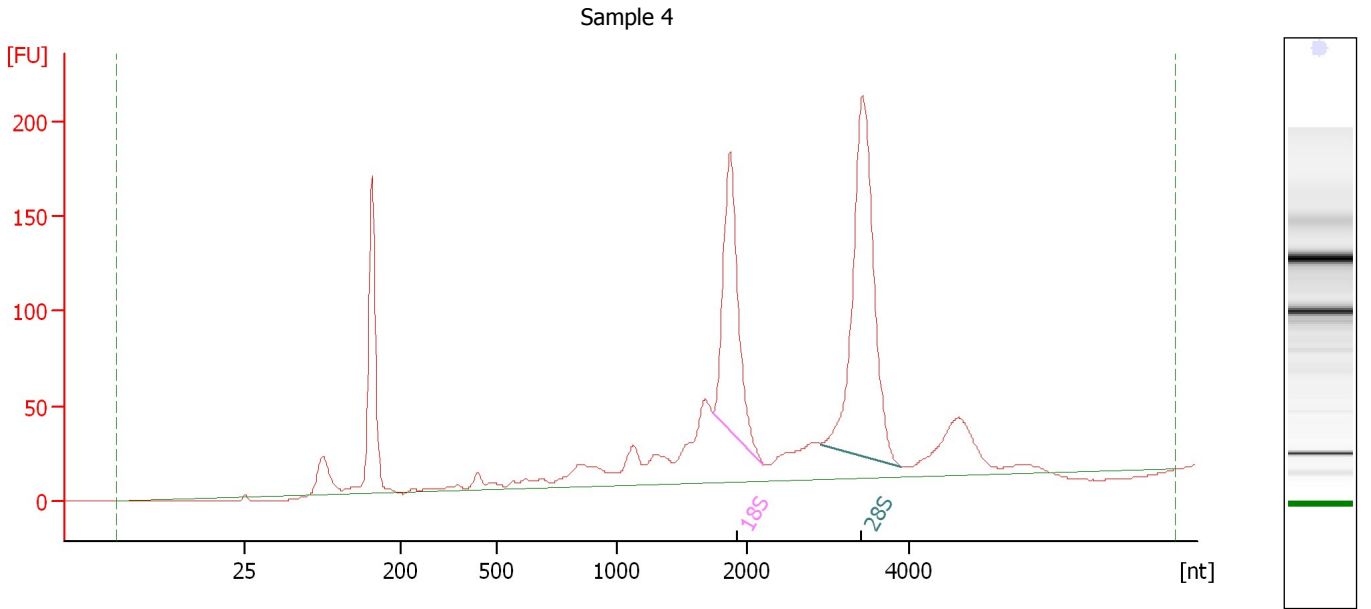
**Fragment table for sample 3 : Sample 3**

Name	Start Size [nt]	End Size [nt]	Area	% of total Area
18S	1,713	2,044	50.7	5.4
28S	3,130	3,712	42.6	4.5

Assay Class: Eukaryote Total RNA Nano  
 Data Path: C:\...ents and Settings\Bioanalyzer\2012-04-10\2012-04-10\_007.xad

Created: 4/10/2012 4:49:52 PM  
 Modified: 4/10/2012 5:45:44 PM

**Electropherogram Summary Continued ...**



**Overall Results for sample 4 : Sample 4**

RNA Area:	1,608.6	RNA Integrity Number (RIN):	7.9 (B.02.08)
RNA Concentration:	1,630 ng/μl	Result Flagging Color:	<span style="background-color: #ccccff; border: 1px solid black; display: inline-block; width: 20px; height: 10px;"></span>
rRNA Ratio [28s / 18s]:	1.6	Result Flagging Label:	RIN: 7.90

**Fragment table for sample 4 : Sample 4**

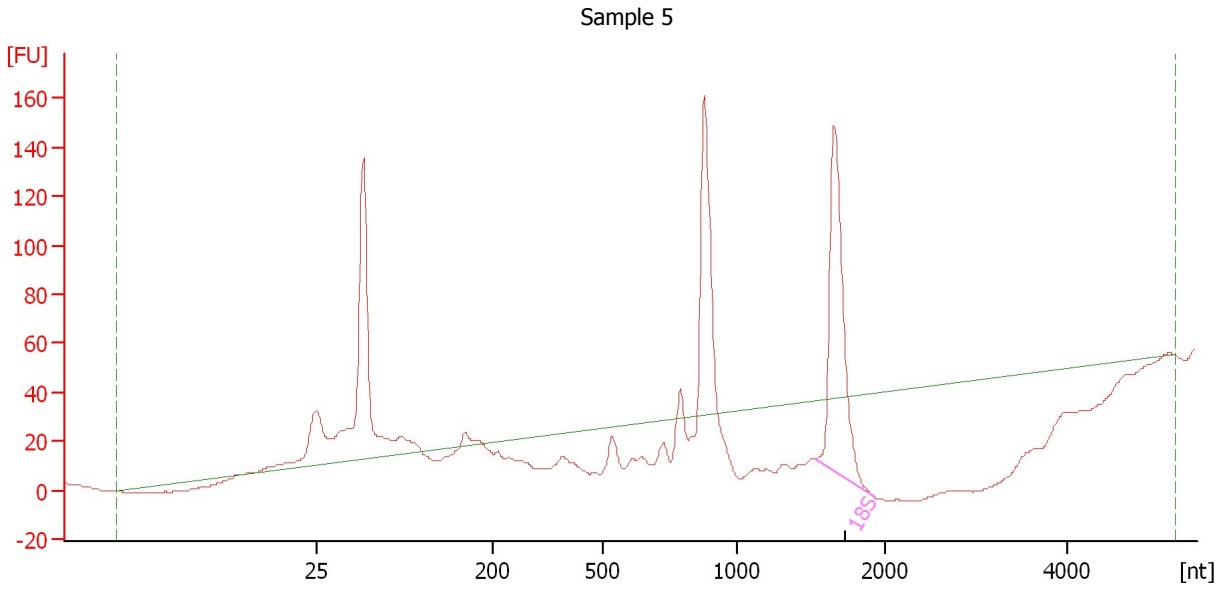
Name	Start Size [nt]	End Size [nt]	Area	% of total Area
18S	1,739	2,203	241.3	15.0
28S	2,904	3,908	390.6	24.3




Assay Class: Eukaryote Total RNA Nano  
Data Path: C:\...ents and Settings\Bioanalyzer\2012-04-10\2012-04-10\_007.xad

Created: 4/10/2012 4:49:52 PM  
Modified: 4/10/2012 5:45:44 PM

**Electropherogram Summary Continued ...**



**Overall Results for sample 5 : Sample 5**

RNA Area:	514.1	RNA Integrity Number (RIN):	N/A (B.02.08)
RNA Concentration:	521 ng/μl	Result Flagging Color:	
rRNA Ratio [28s / 18s]:	0.0	Result Flagging Label:	RIN N/A

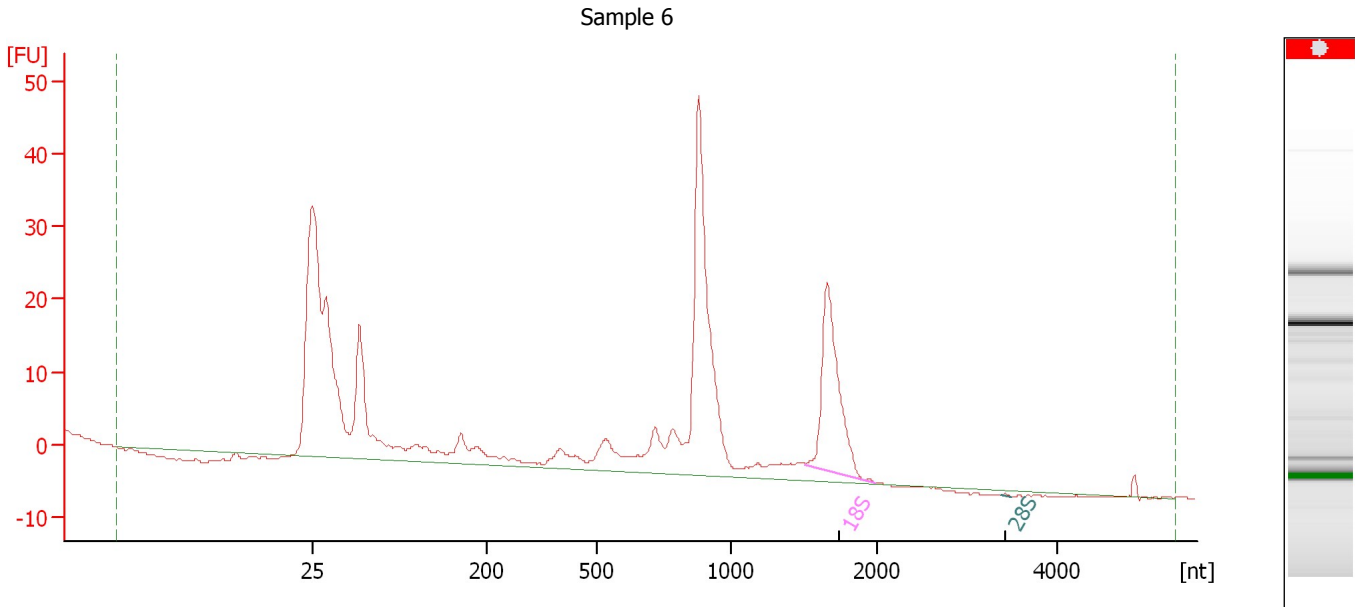
**Fragment table for sample 5 : Sample 5**

Name	Start Size [nt]	End Size [nt]	Area	% of total Area
18S	1,524	1,932	193.1	37.6

Assay Class: Eukaryote Total RNA Nano  
Data Path: C:\...ents and Settings\Bioanalyzer\2012-04-10\2012-04-10\_007.xad

Created: 4/10/2012 4:49:52 PM  
Modified: 4/10/2012 5:45:44 PM

**Electropherogram Summary Continued ...**



**Setpoint Deviations for sample 6 : Sample 6**

Height Threshold [FU] : 0.1

**Overall Results for sample 6 : Sample 6**

RNA Area:	257.9	RNA Integrity Number (RIN):	N/A (B.02.08)
RNA Concentration:	261 ng/μl	Result Flagging Color:	<input type="checkbox"/>
rRNA Ratio [28s / 18s]:	0.0	Result Flagging Label:	RIN N/A

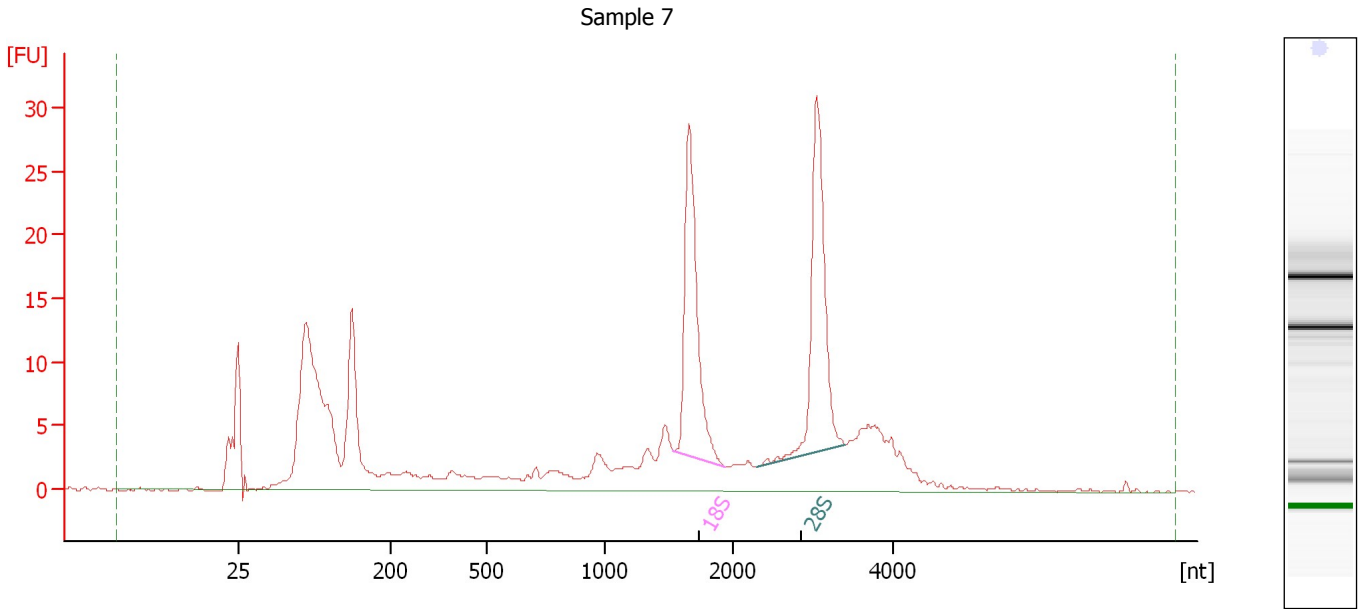
**Fragment table for sample 6 : Sample 6**

Name	Start Size [nt]	End Size [nt]	Area	% of total Area
18S	1,511	1,995	43.7	16.9
28S	3,381	3,486	0.1	0.0

Assay Class: Eukaryote Total RNA Nano  
Data Path: C:\...ents and Settings\Bioanalyzer\2012-04-10\2012-04-10\_007.xad

Created: 4/10/2012 4:49:52 PM  
Modified: 4/10/2012 5:45:44 PM

**Electropherogram Summary Continued ...**



**Overall Results for sample 7 : Sample 7**

RNA Area:	283.8	RNA Integrity Number (RIN):	7.7 (B.02.08)
RNA Concentration:	288 ng/μl	Result Flagging Color:	<span style="background-color: #ccccff; border: 1px solid black; display: inline-block; width: 20px; height: 10px;"></span>
rRNA Ratio [28s / 18s]:	1.0	Result Flagging Label:	RIN: 7.70

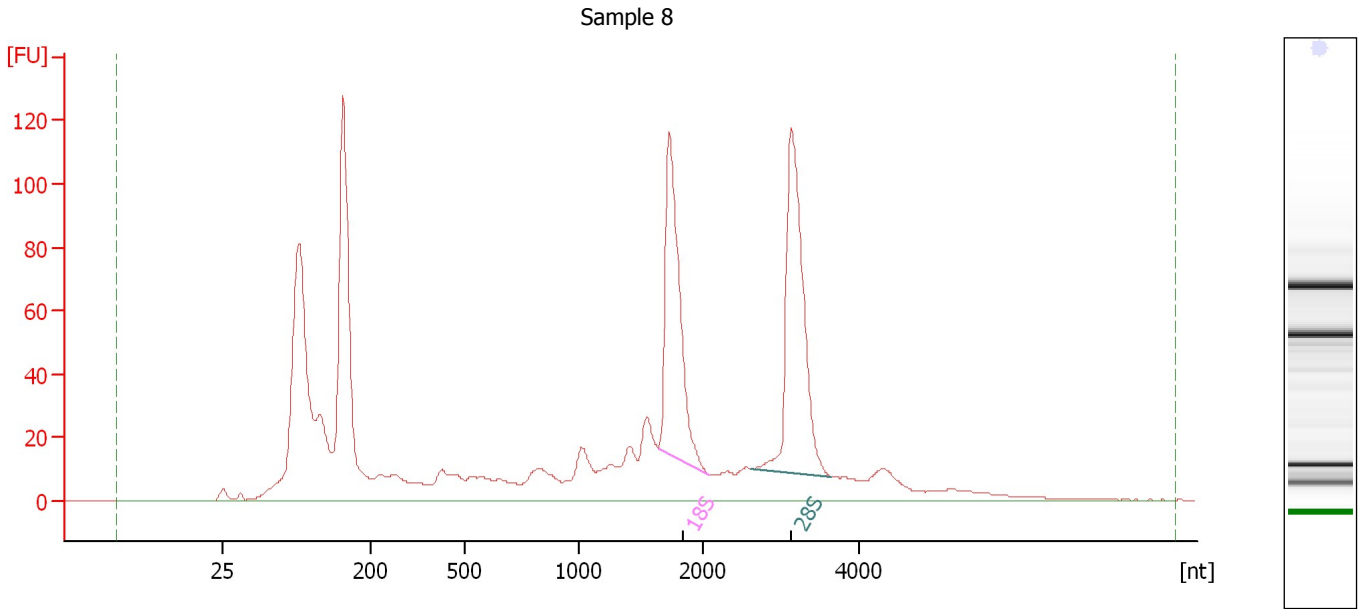
**Fragment table for sample 7 : Sample 7**

Name	Start Size [nt]	End Size [nt]	Area	% of total Area
18S	1,539	1,940	36.8	13.0
28S	2,306	3,418	37.0	13.0

Assay Class: Eukaryote Total RNA Nano  
Data Path: C:\...ents and Settings\Bioanalyzer\2012-04-10\2012-04-10\_007.xad

Created: 4/10/2012 4:49:52 PM  
Modified: 4/10/2012 5:45:44 PM

**Electropherogram Summary Continued ...**



**Overall Results for sample 8 : Sample 8**

RNA Area:	1,473.2	RNA Integrity Number (RIN):	7.4 (B.02.08)
RNA Concentration:	1,493 ng/μl	Result Flagging Color:	<span style="background-color: #ccccff; border: 1px solid black; display: inline-block; width: 20px; height: 10px;"></span>
rRNA Ratio [28s / 18s]:	1.1	Result Flagging Label:	RIN: 7.40

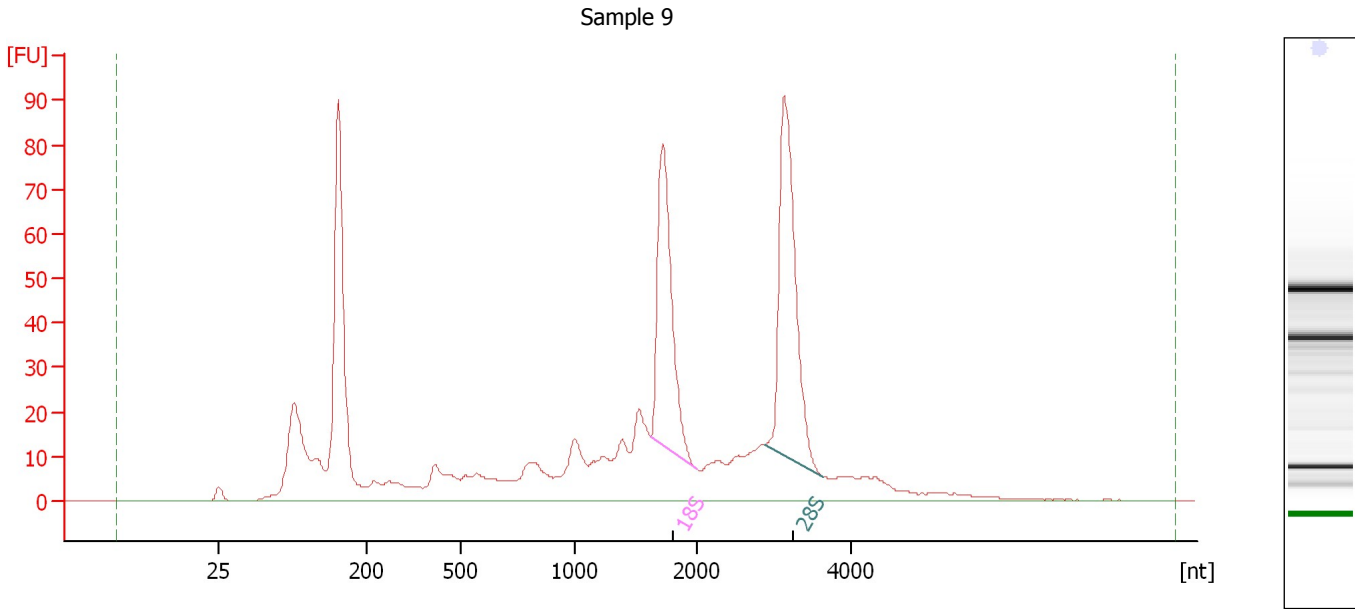
**Fragment table for sample 8 : Sample 8**

Name	Start Size [nt]	End Size [nt]	Area	% of total Area
18S	1,636	2,065	172.1	11.7
28S	2,603	3,650	195.9	13.3

Assay Class: Eukaryote Total RNA Nano  
 Data Path: C:\...ents and Settings\Bioanalyzer\2012-04-10\2012-04-10\_007.xad

Created: 4/10/2012 4:49:52 PM  
 Modified: 4/10/2012 5:45:44 PM

**Electropherogram Summary Continued ...**



**Overall Results for sample 9 : Sample 9**

RNA Area:	957.1	RNA Integrity Number (RIN):	7.3 (B.02.08)
RNA Concentration:	970 ng/μl	Result Flagging Color:	<span style="background-color: #ccccff; border: 1px solid black; display: inline-block; width: 20px; height: 10px;"></span>
rRNA Ratio [28s / 18s]:	1.2	Result Flagging Label:	RIN: 7.30

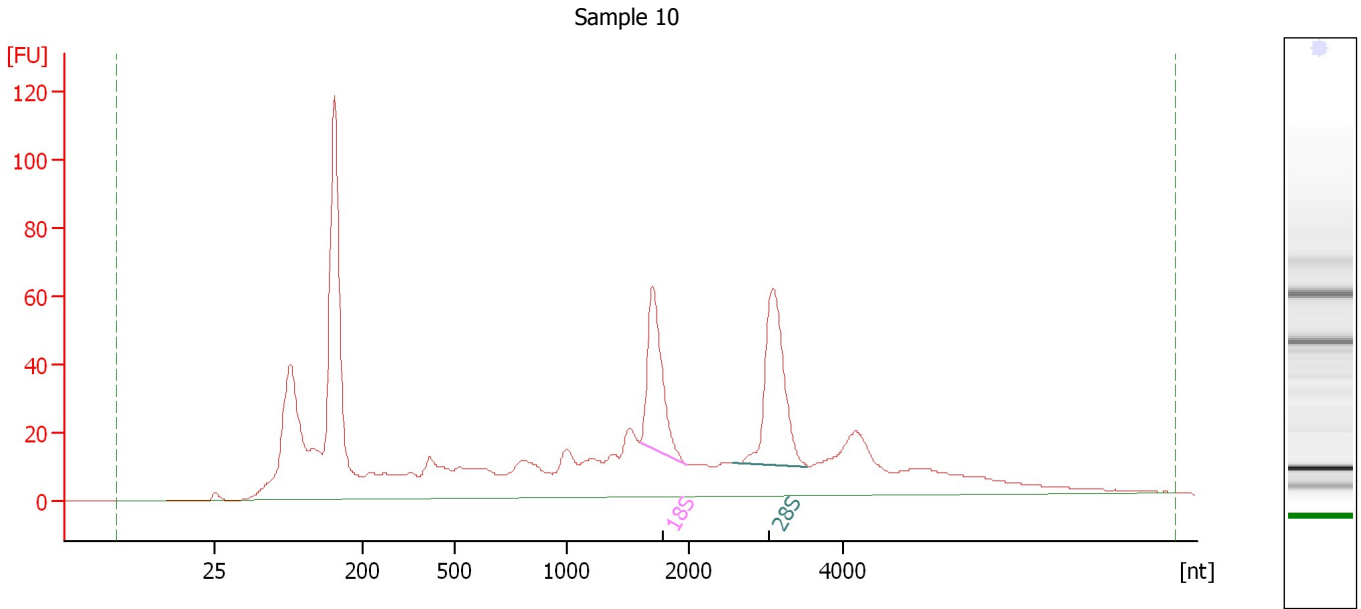
**Fragment table for sample 9 : Sample 9**

Name	Start Size [nt]	End Size [nt]	Area	% of total Area
18S	1,623	1,995	113.6	11.9
28S	2,880	3,615	138.1	14.4

Assay Class: Eukaryote Total RNA Nano  
Data Path: C:\...ents and Settings\Bioanalyzer\2012-04-10\2012-04-10\_007.xad

Created: 4/10/2012 4:49:52 PM  
Modified: 4/10/2012 5:45:44 PM

**Electropherogram Summary Continued ...**



**Overall Results for sample 10 : Sample 10**

RNA Area: 1,249.4      RNA Integrity Number (RIN): 6.1 (B.02.08)  
RNA Concentration: 1,266 ng/μl      Result Flagging Color:   
rRNA Ratio [28s / 18s]: 1.3      Result Flagging Label: RIN: 6.10

**Fragment table for sample 10 : Sample 10**

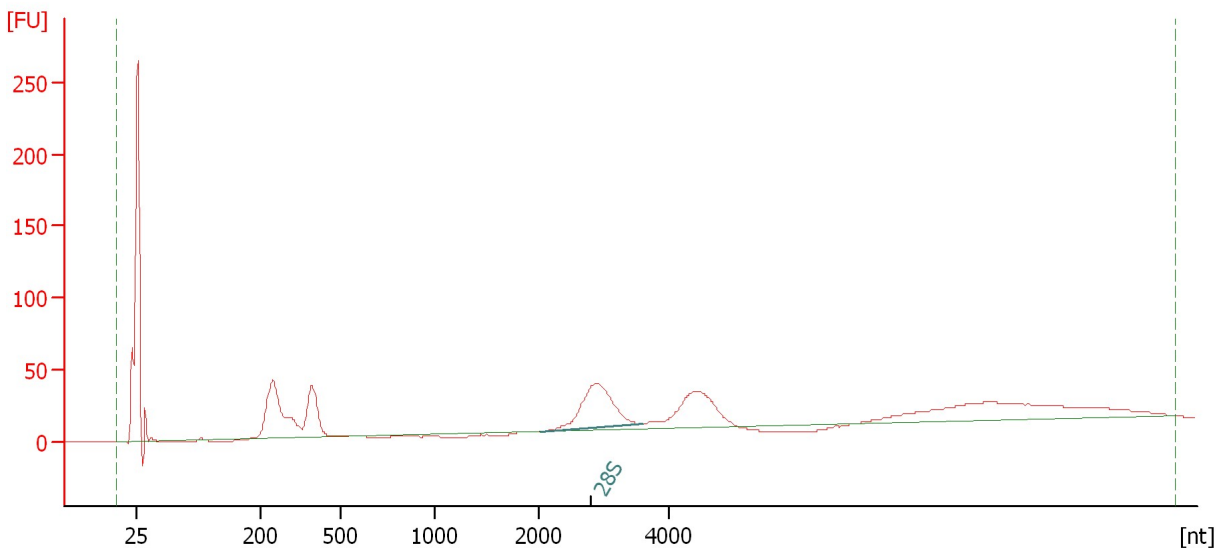
Name	Start Size [nt]	End Size [nt]	Area	% of total Area
18S	1,600	1,984	82.7	6.6
28S	2,576	3,541	105.5	8.4

Assay Class: Eukaryote Total RNA Nano  
Data Path: C:\...ents and Settings\Bioanalyzer\2012-04-10\2012-04-10\_007.xad

Created: 4/10/2012 4:49:52 PM  
Modified: 4/10/2012 5:45:44 PM

**Electropherogram Summary Continued ...**

Sample 11



**Overall Results for sample 11 : Sample 11**

RNA Area:	640.4	RNA Integrity Number (RIN):	N/A (B.02.08)
RNA Concentration:	649 ng/μl	Result Flagging Color:	<span style="background-color: #cccccc; border: 1px solid black; display: inline-block; width: 20px; height: 10px;"></span>
rRNA Ratio [28s / 18s]:	0.0	Result Flagging Label:	RIN N/A

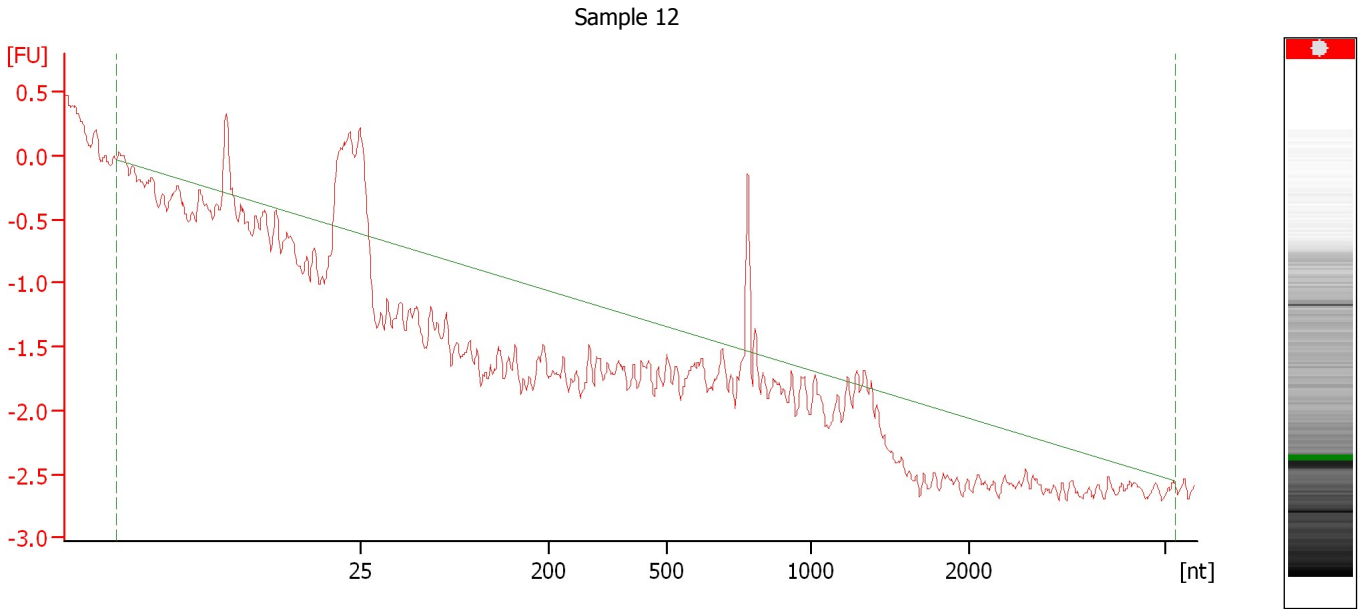
**Fragment table for sample 11 : Sample 11**

Name	Start Size [nt]	End Size [nt]	Area	% of total Area
28S	2,006	3,588	122.4	19.1


Assay Class: Eukaryote Total RNA Nano  
Data Path: C:\...ents and Settings\Bioanalyzer\2012-04-10\2012-04-10\_007.xad

Created: 4/10/2012 4:49:52 PM  
Modified: 4/10/2012 5:45:44 PM

**Electropherogram Summary Continued ...**



**Overall Results for sample 12 : Sample 12**

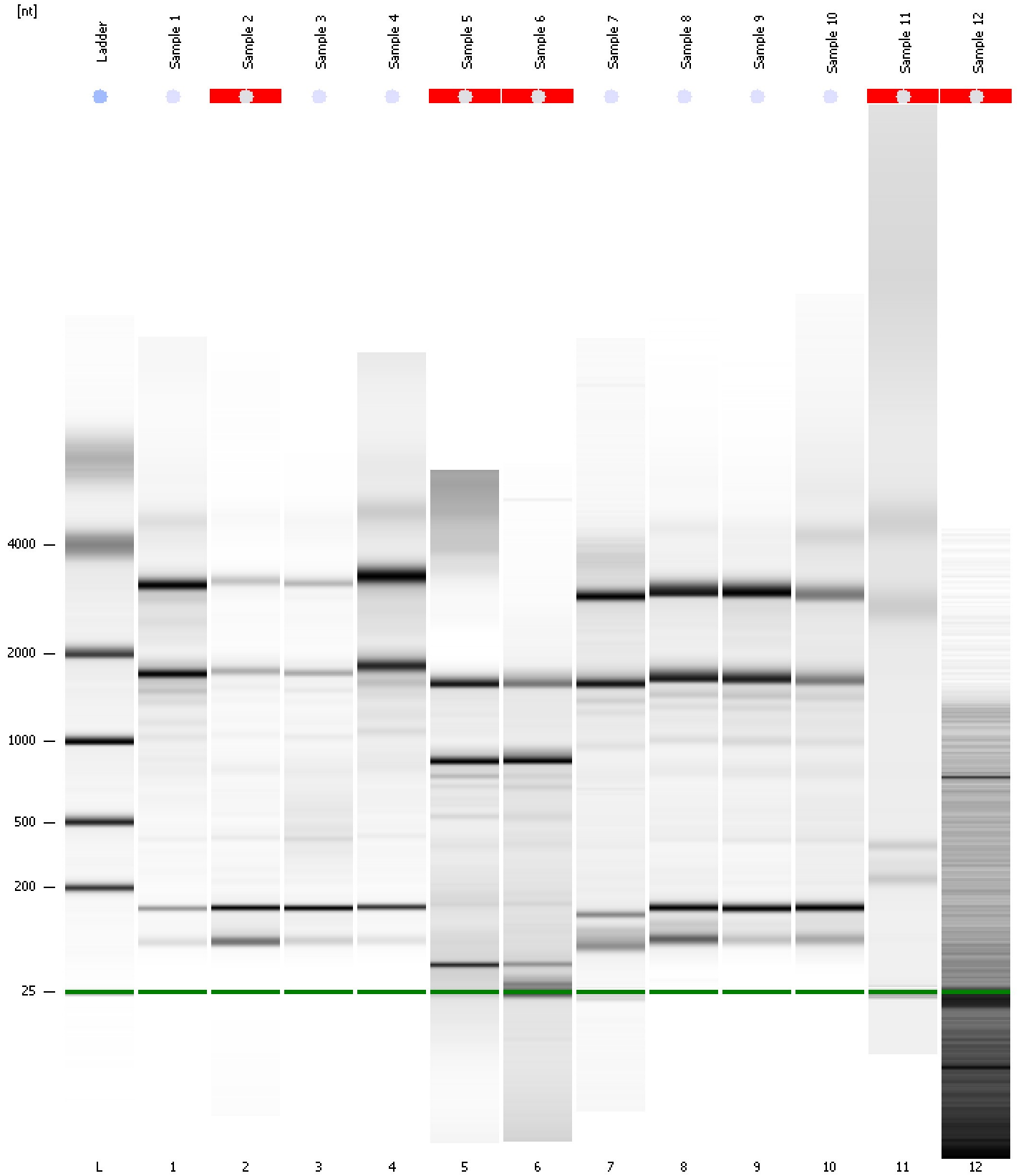
RNA Area:	1.5	RNA Integrity Number (RIN):	N/A (B.02.08)
RNA Concentration:	2 ng/μl	Result Flagging Color:	
rRNA Ratio [28s / 18s]:	0.0	Result Flagging Label:	RIN N/A



Assay Class: Eukaryote Total RNA Nano  
Data Path: C:\...ents and Settings\Bioanalyzer\2012-04-10\2012-04-10\_007.xad

Created: 4/10/2012 4:49:52 PM  
Modified: 4/10/2012 5:45:44 PM

**Gel Image**



Assay Class: Eukaryote Total RNA Nano  
 Data Path: C:\...ents and Settings\Bioanalyzer\2012-04-10\2012-04-10\_007.xad

Created: 4/10/2012 4:49:52 PM  
 Modified: 4/10/2012 5:45:44 PM

**Run Logbook**

Description	Number	Source	Category	Sub Category	Time	Time Zone	User	Host
Run ended on port 1 (Number of wells acquired: 13)		Instrument	Run		4/10/2012 5:12:56 PM	(GMT --07:00) Pacific Standard Time	UC Davis	D8XSMGH1
Run started on port 1 (File: C:\Documents and Settings\Bioanalyzer\2012-04-10\2012-04-10_007.xad)		Instrument	Run		4/10/2012 4:49:57 PM	(GMT --07:00) Pacific Standard Time	UC Davis	D8XSMGH1
Product Number : G2938B		Instrument	Run		4/10/2012 4:49:57 PM	(GMT --07:00) Pacific Standard Time	UC Davis	D8XSMGH1
Name :		Instrument	Run		4/10/2012 4:49:57 PM	(GMT --07:00) Pacific Standard Time	UC Davis	D8XSMGH1
Vendor : Agilent Technologies		Instrument	Run		4/10/2012 4:49:57 PM	(GMT --07:00) Pacific Standard Time	UC Davis	D8XSMGH1
Serial# : DE13701086		Instrument	Run		4/10/2012 4:49:57 PM	(GMT --07:00) Pacific Standard Time	UC Davis	D8XSMGH1
Firmware : C.01.069		Instrument	Run		4/10/2012 4:49:57 PM	(GMT --07:00) Pacific Standard Time	UC Davis	D8XSMGH1
Cartridge : Electrode		Instrument	Run		4/10/2012 4:49:57 PM	(GMT --07:00) Pacific Standard Time	UC Davis	D8XSMGH1