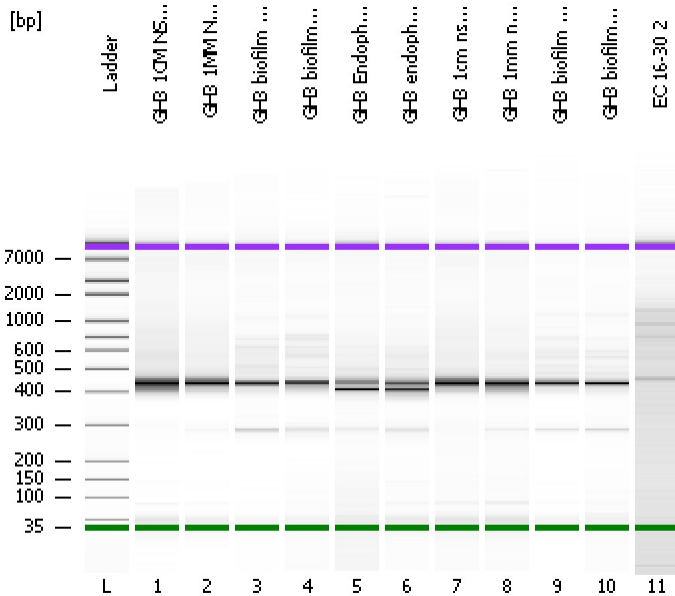


Assay Class: High Sensitivity DNA Assay
Data Path: C:\...ents and Settings\Bioanalyzer\2012-04-10\2012-04-10_004.xad

Created: 4/10/2012 1:05:49 PM
Modified: 4/10/2012 1:48:39 PM

Electrophoresis File Run Summary



Instrument Information:

Instrument Name: DE13701086 Firmware: C.01.069
Serial#: DE13701086 Type: G2938B

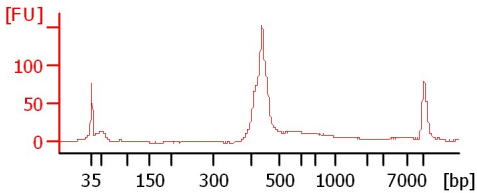
Assay Information:

Assay Origin Path: C:\Program Files\Agilent\2100 bioanalyzer\2100 expert\assays\dsDNA\High Sensitivity DNA.xsy
Assay Class: High Sensitivity DNA Assay
Version: 1.03
Assay Comments: Copyright © 2003-2010 Agilent Technologies

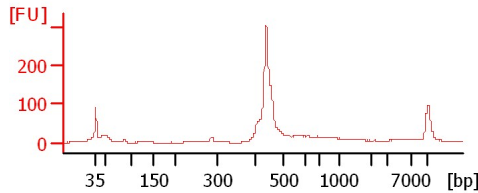
Chip Information:

Chip Lot #:
Reagent Kit Lot #:
Chip Comments:

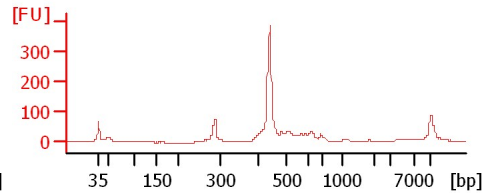
GH3 1CM NS T1



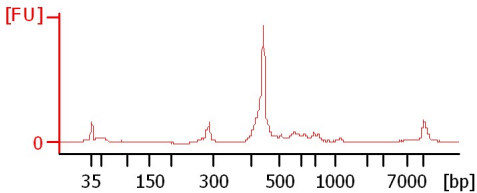
GH3 1MM NS T3



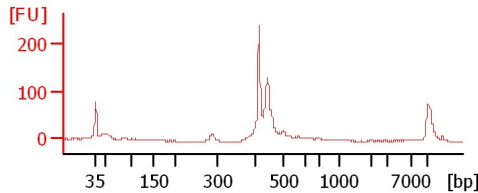
GH3 biofilm ns T5



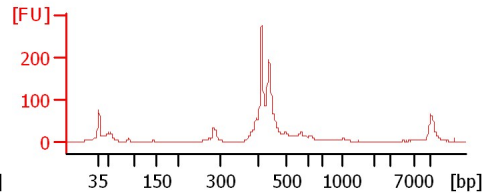
GH3 biofilm2 ns T6



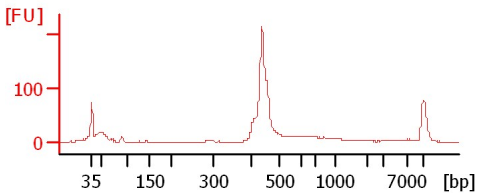
GH3 Endophyte ns E5



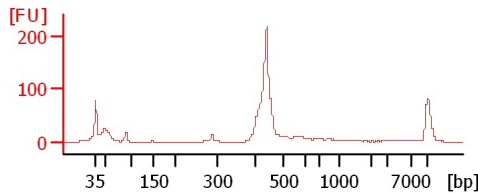
GH3 endophyte ns E6



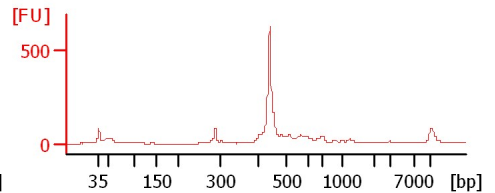
GH3 1cm ns T9



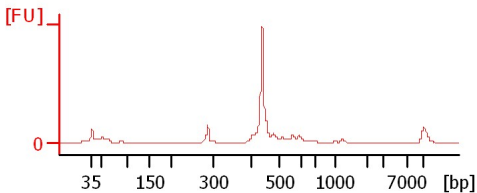
GH3 1mm ns T11



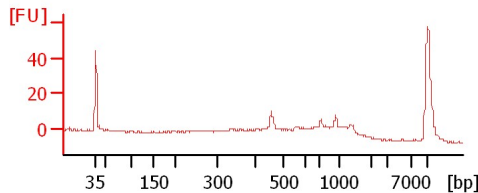
GH3 biofilm ns T13



GH3 biofilm2 ns T14



EC 16-30 2



Assay Class: High Sensitivity DNA Assay
 Data Path: C:\...ents and Settings\Bioanalyzer\2012-04-10\2012-04-10_004.xad

Created: 4/10/2012 1:05:49 PM
 Modified: 4/10/2012 1:48:39 PM

Electrophoresis File Run Summary (Chip Summary)

Sample Name	Sample Comment	Rest. Digest	Status	Observation	Result Label	Result Color
GH3 1CM NS T1		<input type="checkbox"/>	✓			
GH3 1MM NS T3		<input type="checkbox"/>	✓			
GH3 biofilm ns T5		<input type="checkbox"/>	✓			
GH3 biofilm2 ns T6		<input type="checkbox"/>	✓			
GH3 Endophyte ns E5		<input type="checkbox"/>	✓			
GH3 endophyte ns E6		<input type="checkbox"/>	✓			
GH3 1cm ns T9		<input type="checkbox"/>	✓			
GH3 1mm ns T11		<input type="checkbox"/>	✓			
GH3 biofilm ns T13		<input type="checkbox"/>	✓			
GH3 biofilm2 ns T14		<input type="checkbox"/>	✓			
EC 16-30 2		<input type="checkbox"/>	✓			
Ladder		<input type="checkbox"/>	✓			

Chip Lot #

Reagent Kit Lot #

Chip Comments :

Assay Class: High Sensitivity DNA Assay
Data Path: C:\...ents and Settings\Bioanalyzer\2012-04-10\2012-04-10_004.xad

Created: 4/10/2012 1:05:49 PM
Modified: 4/10/2012 1:48:39 PM

Electrophoresis Assay Details

General Analysis Settings

Number of Available Sample and Ladder Wells (Max.) : 12
Minimum Visible Range [s] : 32
Maximum Visible Range [s] : 138
Start Analysis Time Range [s] : 33
End Analysis Time Range [s] : 137.5
Ladder Concentration [pg/μl] : 1950
Uses Standard Area for Ladder Fragments
Lower Marker Concentration [pg/μl] : 125
Upper Marker Concentration [pg/μl] : 75
Used Upper Marker for Quantitation
Standard Curve Fit is Point to Point
Show Data Aligned to Lower and Upper Marker

Integrator Settings

Integration Start Time [s] : 33.05
Integration End Time [s] : 137
Slope Threshold : 0.8
Height Threshold [FU] : 20
Area Threshold : 0.1
Width Threshold [s] : 0.6
Baseline Plateau [s] : 0.5

Filter Settings

Filter Width [s] : 0.5
Polynomial Order : 4

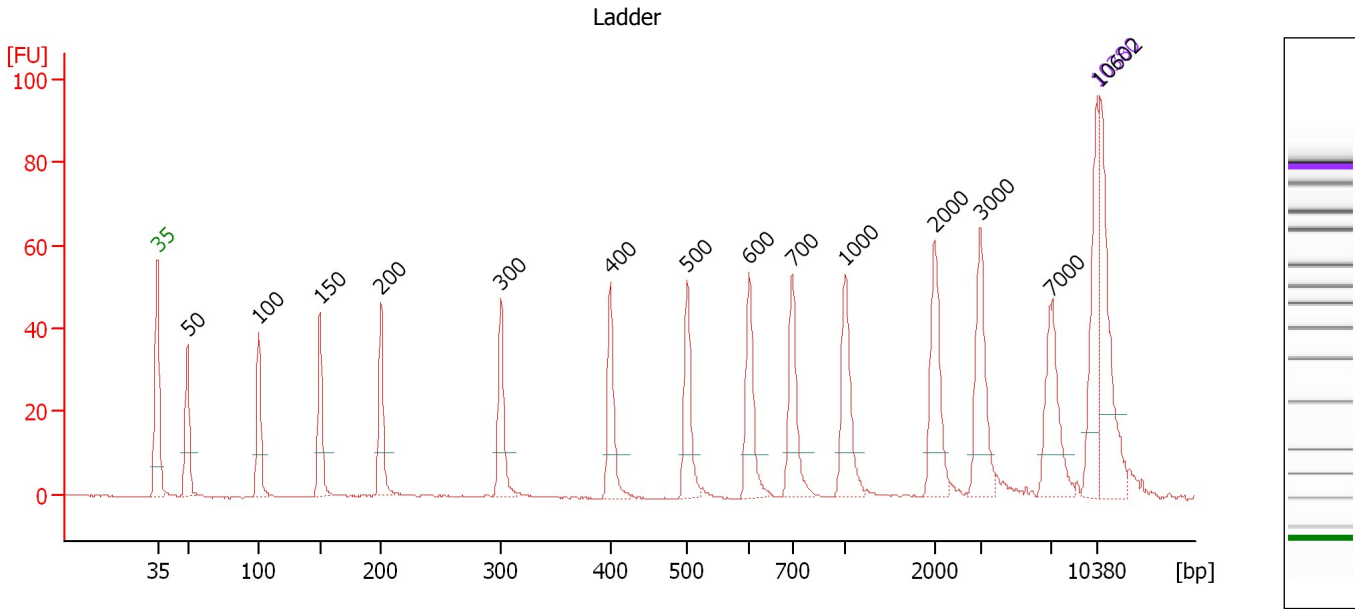
Ladder

Ladder Peak	Size	Area
1	35	160
2	50	210
3	100	208
4	150	221
5	200	242
6	300	270
7	400	305
8	500	306
9	600	336
10	700	321
11	1000	366
12	2000	413
13	3000	411
14	7000	400
15	10380	214

Assay Class: High Sensitivity DNA Assay
 Data Path: C:\...ents and Settings\Bioanalyzer\2012-04-10\2012-04-10_004.xad

Created: 4/10/2012 1:05:49 PM
 Modified: 4/10/2012 1:48:39 PM

Electropherogram Summary



Overall Results for Ladder

Noise: 0.1

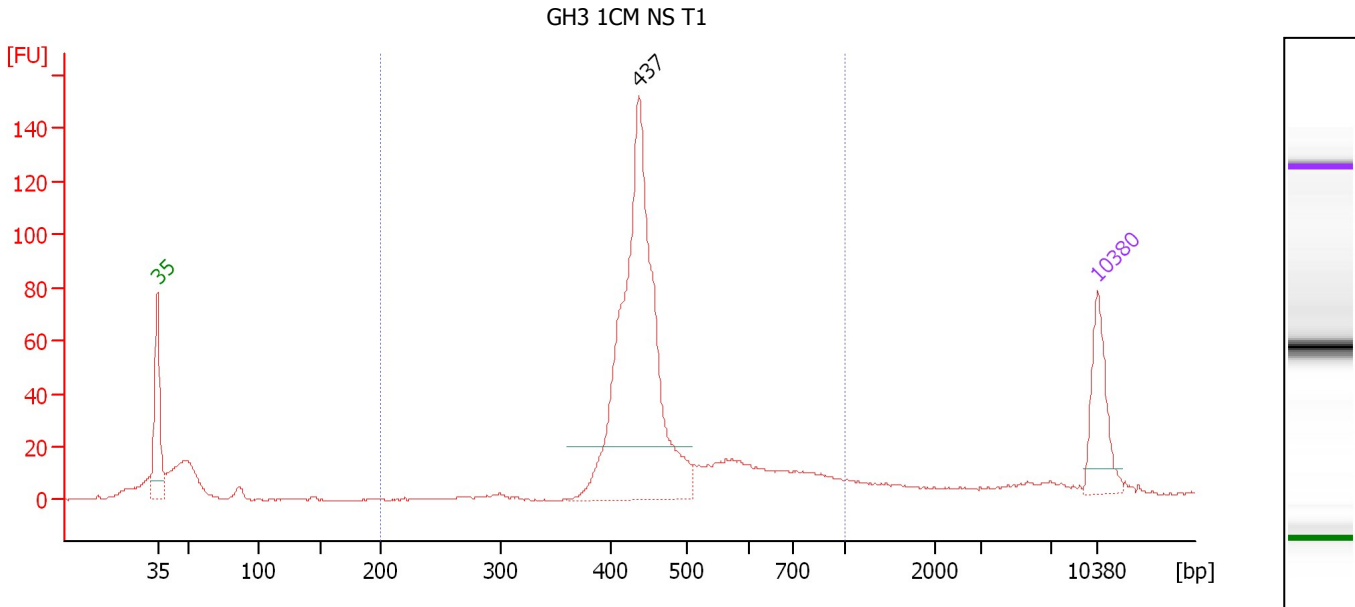
Peak table for Ladder

Peak	Size [bp]	Conc. [pg/μl]	Molarity [pmol/l]	Observations
1	35	125.00	5,411.3	Lower Marker
2	50	150.00	4,545.5	Ladder Peak
3	100	150.00	2,272.7	Ladder Peak
4	150	150.00	1,515.2	Ladder Peak
5	200	150.00	1,136.4	Ladder Peak
6	300	150.00	757.6	Ladder Peak
7	400	150.00	568.2	Ladder Peak
8	500	150.00	454.5	Ladder Peak
9	600	150.00	378.8	Ladder Peak
10	700	150.00	324.7	Ladder Peak
11	1,000	150.00	227.3	Ladder Peak
12	2,000	150.00	113.6	Ladder Peak
13	3,000	150.00	75.8	Ladder Peak
14	7,000	150.00	32.5	Ladder Peak
15	10,380	75.00	10.9	Upper Marker
16	10,602	0.00	0.0	

Assay Class: High Sensitivity DNA Assay
 Data Path: C:\...ents and Settings\Bioanalyzer\2012-04-10\2012-04-10_004.xad

Created: 4/10/2012 1:05:49 PM
 Modified: 4/10/2012 1:48:39 PM

Electropherogram Summary Continued ...



Overall Results for sample 1 : GH3 1CM NS T1

Number of peaks found: 1 Corr. Area 1: 658.5
 Noise: 0.2

Peak table for sample 1 : GH3 1CM NS T1

Peak	Size [bp]	Conc. [pg/μl]	Molarity [pmol/l]	Observations
1	35	125.00	5,411.3	Lower Marker
2	437	653.15	2,265.2	
3	10,380	75.00	10.9	Upper Marker

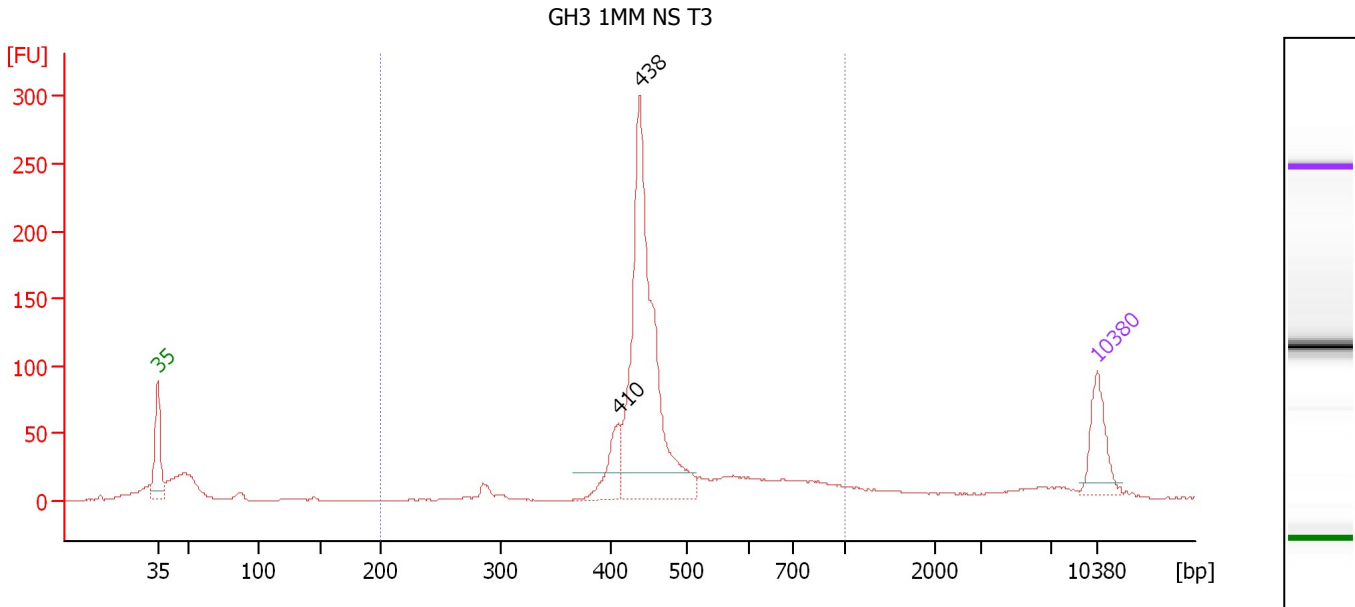
Region table for sample 1 : GH3 1CM NS T1

From [bp]	Molarity [pmol/l]	Average Size [bp]	Conc. [pg/μl]	To [bp]	Corr. Area	% of Total	Size distribution in CV [%]	Color
200	2,549.0	483	777.20	1,000	658.5	79	22.6	Blue

Assay Class: High Sensitivity DNA Assay
 Data Path: C:\...ents and Settings\Bioanalyzer\2012-04-10\2012-04-10_004.xad

Created: 4/10/2012 1:05:49 PM
 Modified: 4/10/2012 1:48:39 PM

Electropherogram Summary Continued ...



Overall Results for sample 2 : GH3 1MM NS T3

Number of peaks found: 2 Corr. Area 1: 974.7
 Noise: 0.4

Peak table for sample 2 : GH3 1MM NS T3

Peak	Size [bp]	Conc. [pg/μl]	Molarity [pmol/l]	Observations
1	35	125.00	5,411.3	Lower Marker
2	410	85.68	316.4	
3	438	688.26	2,379.1	
4	10,380	75.00	10.9	Upper Marker

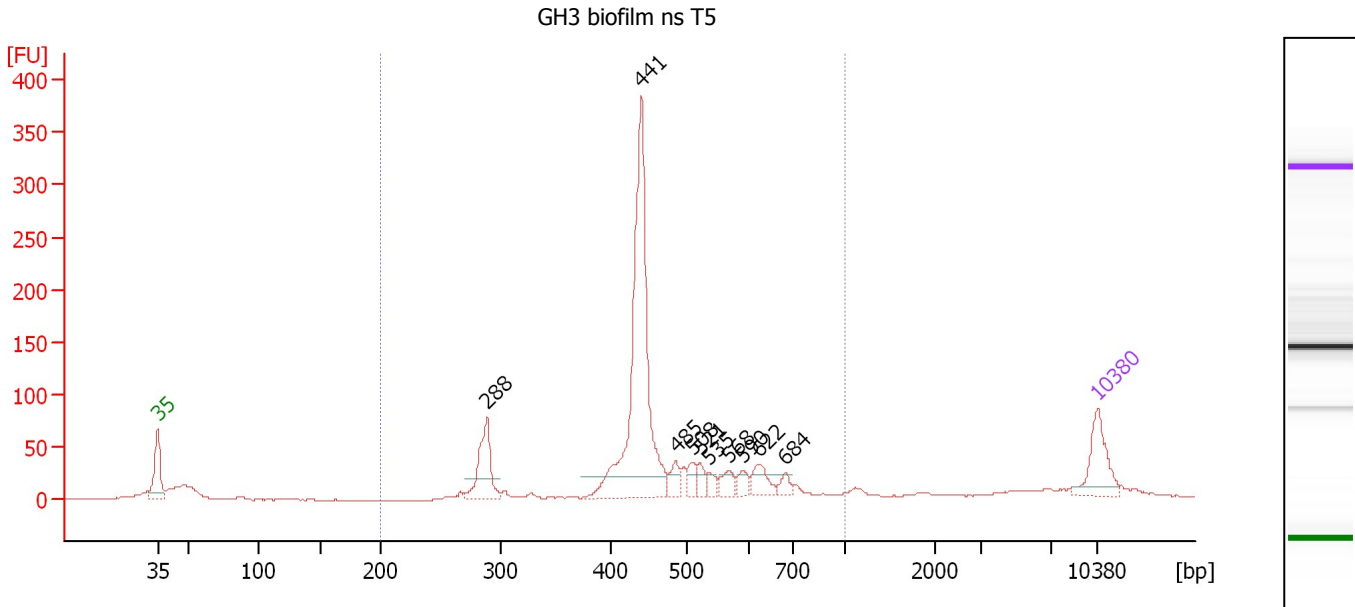
Region table for sample 2 : GH3 1MM NS T3

From [bp]	Molarity [pmol/l]	Average Size [bp]	Conc. [pg/μl]	To [bp]	Corr. Area	% of Total	Size distribution in CV [%]	Color
200	3,132.7	484	951.34	1,000	974.7	78	23.1	Blue

Assay Class: High Sensitivity DNA Assay
 Data Path: C:\...ents and Settings\Bioanalyzer\2012-04-10\2012-04-10_004.xad

Created: 4/10/2012 1:05:49 PM
 Modified: 4/10/2012 1:48:39 PM

Electropherogram Summary Continued ...



Overall Results for sample 3 : GH3 biofilm ns T5

Number of peaks found: 10 Corr. Area 1: 1,081.3
 Noise: 0.4

Peak table for sample 3 : GH3 biofilm ns T5

Peak	Size [bp]	Conc. [pg/μl]	Molarity [pmol/l]	Observations
1	35	125.00	5,411.3	Lower Marker
2	288	133.74	702.9	
3	441	604.77	2,079.7	
4	485	33.19	103.6	
5	508	25.14	75.0	
6	521	23.83	69.3	
7	535	19.10	54.1	
8	568	28.57	76.2	
9	590	21.50	55.2	
10	622	41.20	100.3	
11	684	18.33	40.6	
12	10,380	75.00	10.9	Upper Marker

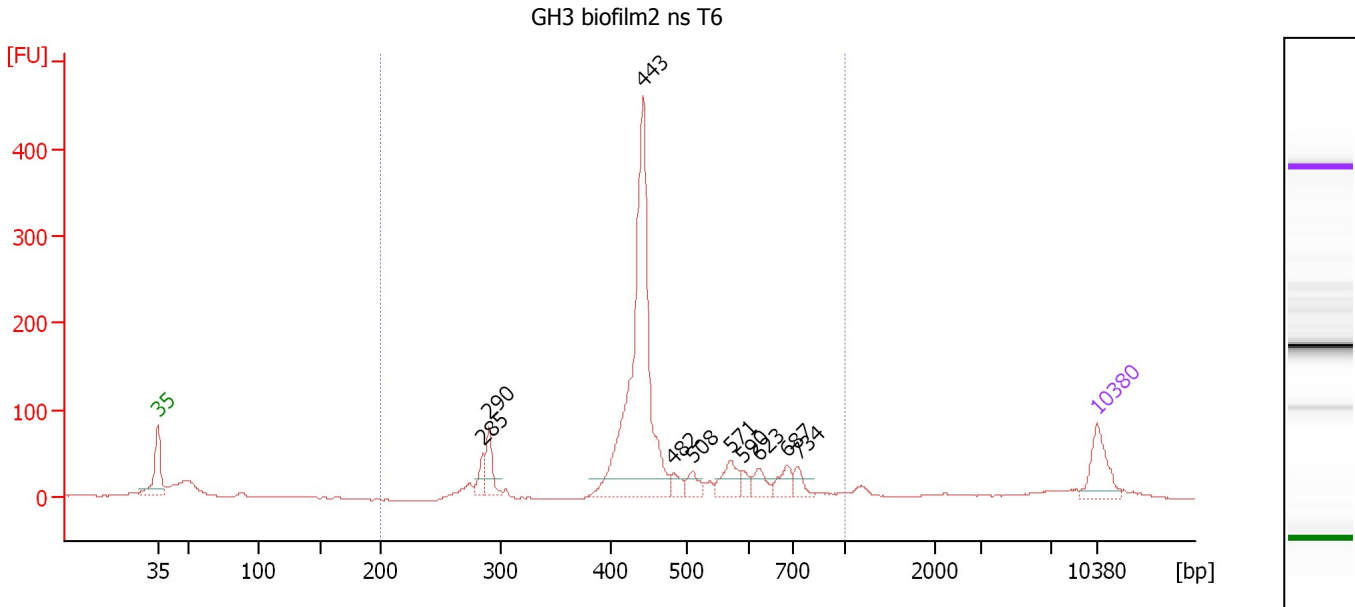
Region table for sample 3 : GH3 biofilm ns T5

From [bp]	Molarity [pmol/l]	Average Size [bp]	Conc. [pg/μl]	To [bp]	Corr. Area	% of Total	Size distribution in CV [%]	Color
200	3,682.8	464	1,043.85	1,000	1,081.3	85	22.7	Blue

Assay Class: High Sensitivity DNA Assay
 Data Path: C:\...ents and Settings\Bioanalyzer\2012-04-10\2012-04-10_004.xad

Created: 4/10/2012 1:05:49 PM
 Modified: 4/10/2012 1:48:39 PM

Electropherogram Summary Continued ...



Overall Results for sample 4 : GH3 biofilm2 ns T6

Number of peaks found: 10 Corr. Area 1: 1,328.0
 Noise: 0.6

Peak table for sample 4 : GH3 biofilm2 ns T6

Peak	Size [bp]	Conc. [pg/μl]	Molarity [pmol/l]	Observations
1	35	125.00	5,411.3	Lower Marker
2	285	41.94	223.1	
3	290	71.92	375.6	
4	443	811.94	2,776.9	
5	482	30.74	96.6	
6	508	35.13	104.7	
7	571	65.41	173.7	
8	590	19.93	51.2	
9	623	38.18	92.9	
10	687	43.05	94.9	
11	734	29.53	61.0	
12	10,380	75.00	10.9	Upper Marker

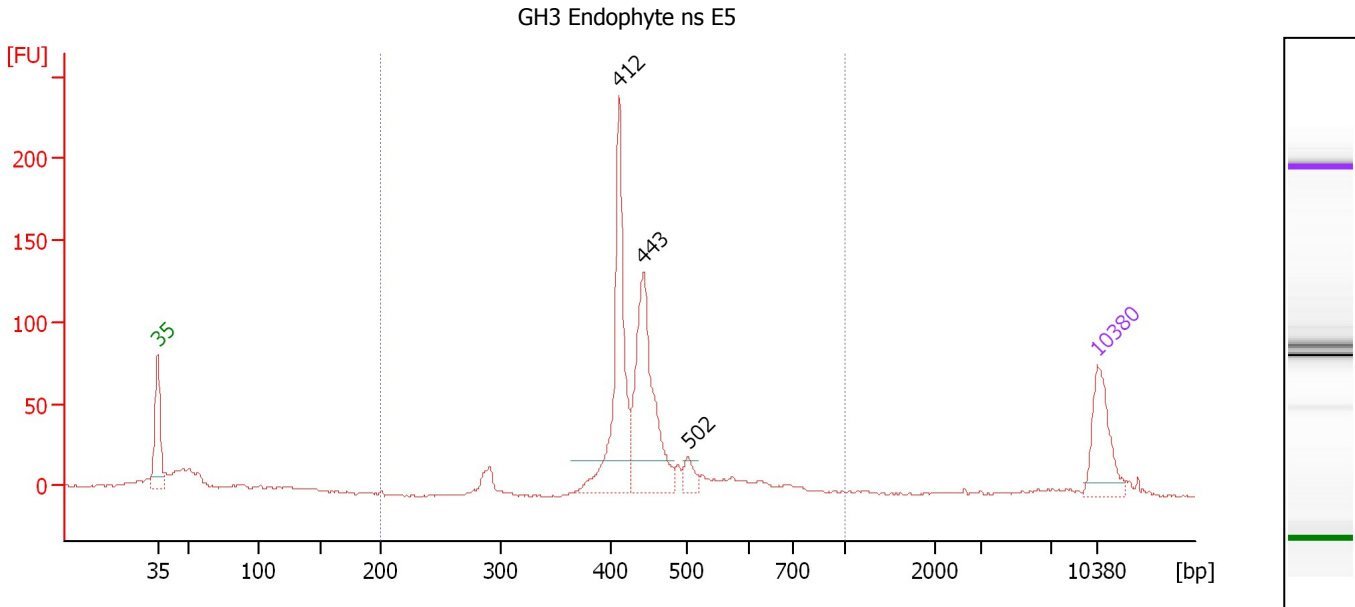
Region table for sample 4 : GH3 biofilm2 ns T6

From [bp]	Molarity [pmol/l]	Average Size [bp]	Conc. [pg/μl]	To [bp]	Corr. Area	% of Total	Size distribution in CV [%]	Color
200	4,509.5	471	1,296.43	1,000	1,328.0	84	23.7	Blue

Assay Class: High Sensitivity DNA Assay
 Data Path: C:\...ents and Settings\Bioanalyzer\2012-04-10\2012-04-10_004.xad

Created: 4/10/2012 1:05:49 PM
 Modified: 4/10/2012 1:48:39 PM

Electropherogram Summary Continued ...



Overall Results for sample 5 : GH3 Endophyte ns E5

Number of peaks found: 3 Corr. Area 1: 643.4
 Noise: 0.6

Peak table for sample 5 : GH3 Endophyte ns E5

Peak	Size [bp]	Conc. [pg/μl]	Molarity [pmol/l]	Observations
1	35	125.00	5,411.3	Lower Marker
2	412	257.98	949.2	
3	443	256.60	877.9	
4	502	25.46	76.8	
5	10,380	75.00	10.9	Upper Marker

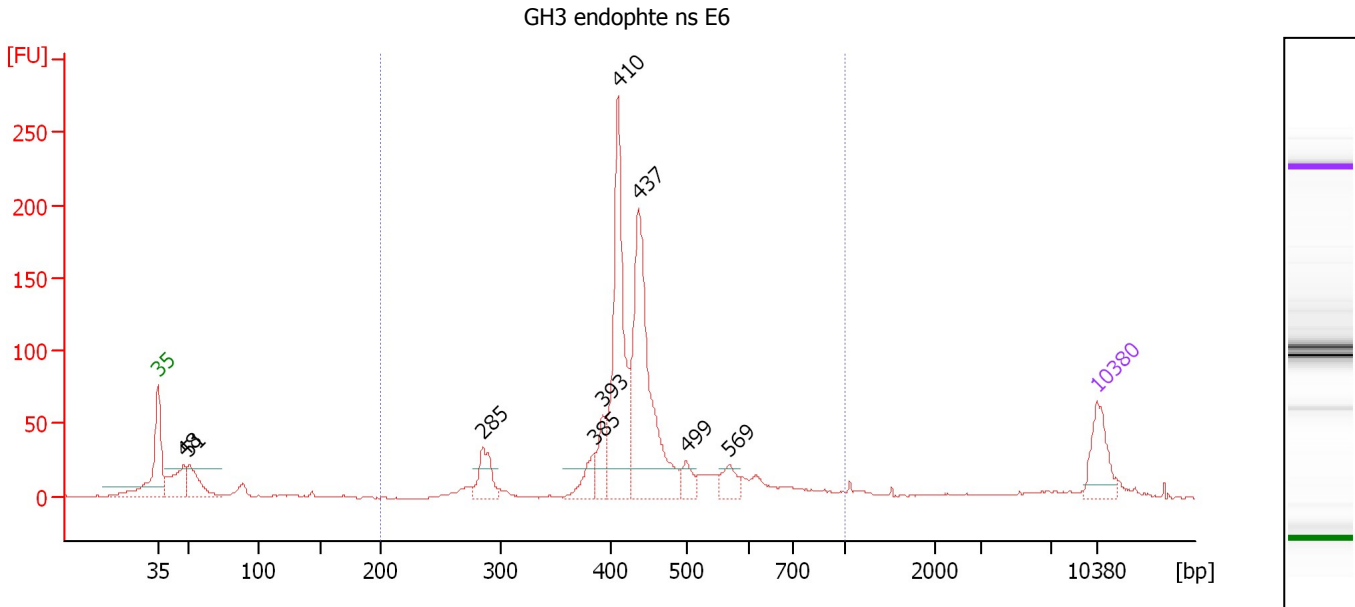
Region table for sample 5 : GH3 Endophyte ns E5

From [bp]	Molarity [pmol/l]	Average Size [bp]	Conc. [pg/μl]	To [bp]	Corr. Area	% of Total	Size distribution in CV [%]	Color
200	2,145.4	452	620.71	1,000	643.4	83	17.2	Blue

Assay Class: High Sensitivity DNA Assay
 Data Path: C:\...ents and Settings\Bioanalyzer\2012-04-10\2012-04-10_004.xad

Created: 4/10/2012 1:05:49 PM
 Modified: 4/10/2012 1:48:39 PM

Electropherogram Summary Continued ...



Overall Results for sample 6 : GH3 endophte ns E6

Number of peaks found: 9 Corr. Area 1: 1,041.1
 Noise: 0.4

Peak table for sample 6 : GH3 endophte ns E6

Peak	Size [bp]	Conc. [pg/μl]	Molarity [pmol/l]	Observations
1	35	125.00	5,411.3	Lower Marker
2	48	123.10	3,887.0	
3	51	101.59	3,002.5	
4	285	83.55	444.7	
5	385	52.20	205.5	
6	393	66.83	257.6	
7	410	411.43	1,521.8	
8	437	481.34	1,670.1	
9	499	41.23	125.1	
10	569	42.92	114.3	
11	10,380	75.00	10.9	Upper Marker

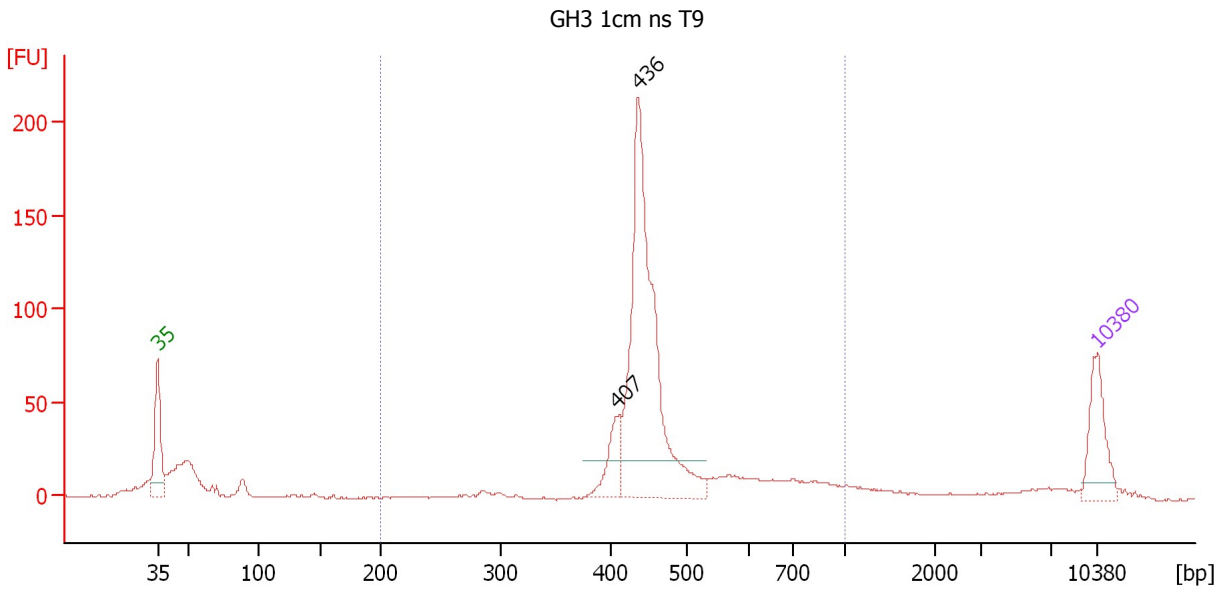
Region table for sample 6 : GH3 endophte ns E6

From [bp]	Molarity [pmol/l]	Average Size [bp]	Conc. [pg/μl]	To [bp]	Corr. Area	% of Total	Size distribution in CV [%]	Color
200	4,775.7	449	1,337.52	1,000	1,041.1	81	22.1	Blue

Assay Class: High Sensitivity DNA Assay
 Data Path: C:\...ents and Settings\Bioanalyzer\2012-04-10\2012-04-10_004.xad

Created: 4/10/2012 1:05:49 PM
 Modified: 4/10/2012 1:48:39 PM

Electropherogram Summary Continued ...



Overall Results for sample 7 : GH3 1cm ns T9

Number of peaks found: 2 Corr. Area 1: 733.0
 Noise: 0.4

Peak table for sample 7 : GH3 1cm ns T9

Peak	Size [bp]	Conc. [pg/μl]	Molarity [pmol/l]	Observations
1	35	125.00	5,411.3	Lower Marker
2	407	70.78	263.2	
3	436	595.83	2,069.0	
4	10,380	75.00	10.9	Upper Marker

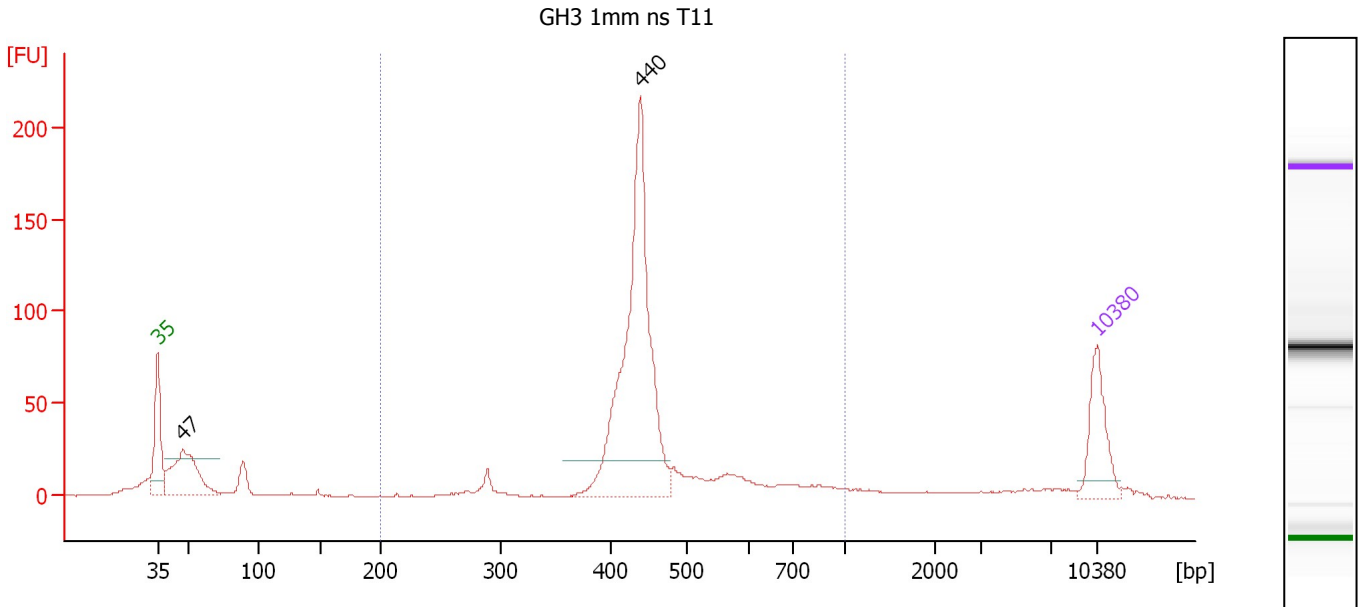
Region table for sample 7 : GH3 1cm ns T9

From [bp]	Molarity [pmol/l]	Average Size [bp]	Conc. [pg/μl]	To [bp]	Corr. Area	% of Total	Size distribution in CV [%]	Color
200	2,625.3	485	800.11	1,000	733.0	75	22.9	Blue

Assay Class: High Sensitivity DNA Assay
 Data Path: C:\...ents and Settings\Bioanalyzer\2012-04-10\2012-04-10_004.xad

Created: 4/10/2012 1:05:49 PM
 Modified: 4/10/2012 1:48:39 PM

Electropherogram Summary Continued ...



Overall Results for sample 8 : GH3 1mm ns T11

Number of peaks found: 2 Corr. Area 1: 726.7
 Noise: 0.4

Peak table for sample 8 : GH3 1mm ns T11

Peak	Size [bp]	Conc. [pg/μl]	Molarity [pmol/l]	Observations
1	35	125.00	5,411.3	Lower Marker
2	47	191.56	6,117.5	
3	440	577.38	1,989.2	
4	10,380	75.00	10.9	Upper Marker

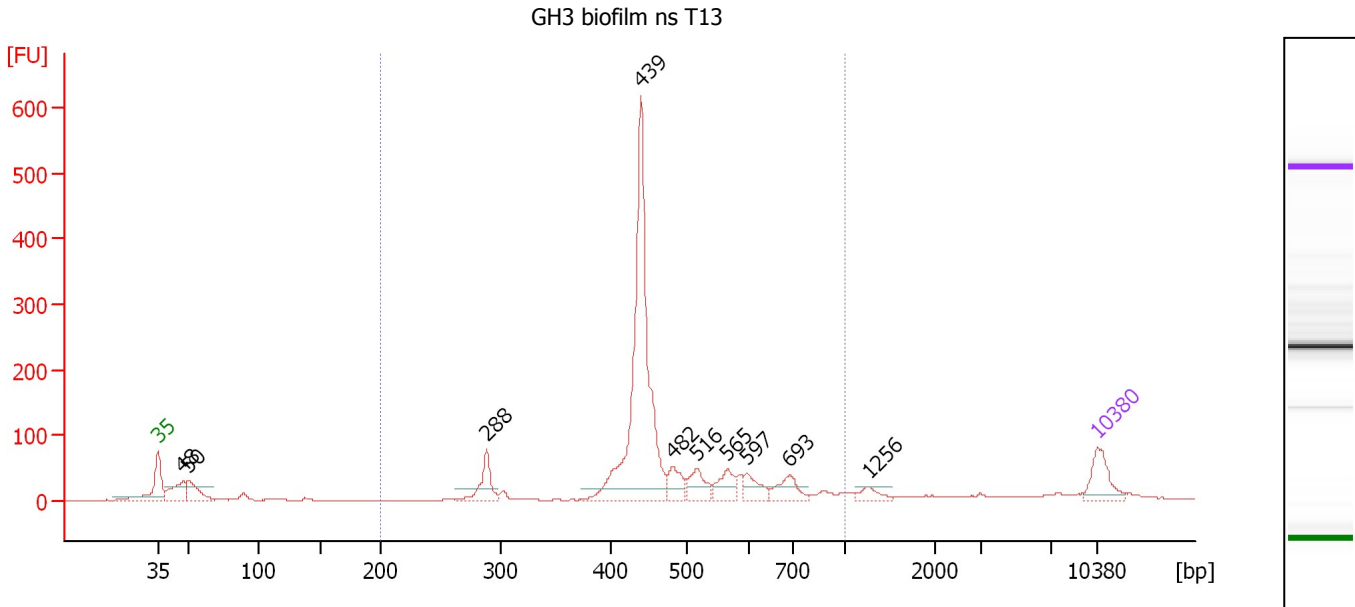
Region table for sample 8 : GH3 1mm ns T11

From [bp]	Molarity [pmol/l]	Average Size [bp]	Conc. [pg/μl]	To [bp]	Corr. Area	% of Total	Size distribution in CV [%]	Color
200	2,583.3	466	753.33	1,000	726.7	72	22.6	Blue

Assay Class: High Sensitivity DNA Assay
 Data Path: C:\...ents and Settings\Bioanalyzer\2012-04-10\2012-04-10_004.xad

Created: 4/10/2012 1:05:49 PM
 Modified: 4/10/2012 1:48:39 PM

Electropherogram Summary Continued ...



Overall Results for sample 9 : GH3 biofilm ns T13

Number of peaks found: 10 Corr. Area 1: 1,496.1
 Noise: 0.4

Peak table for sample 9 : GH3 biofilm ns T13

Peak	Size [bp]	Conc. [pg/μl]	Molarity [pmol/l]	Observations
1	35	125.00	5,411.3	Lower Marker
2	48	115.76	3,663.8	
3	50	95.57	2,881.5	
4	288	109.23	574.4	
5	439	908.85	3,133.3	
6	482	70.76	222.6	
7	516	79.82	234.2	
8	565	69.28	185.7	
9	597	60.78	154.3	
10	693	70.84	154.8	
11	1,256	30.29	36.5	
12	10,380	75.00	10.9	Upper Marker

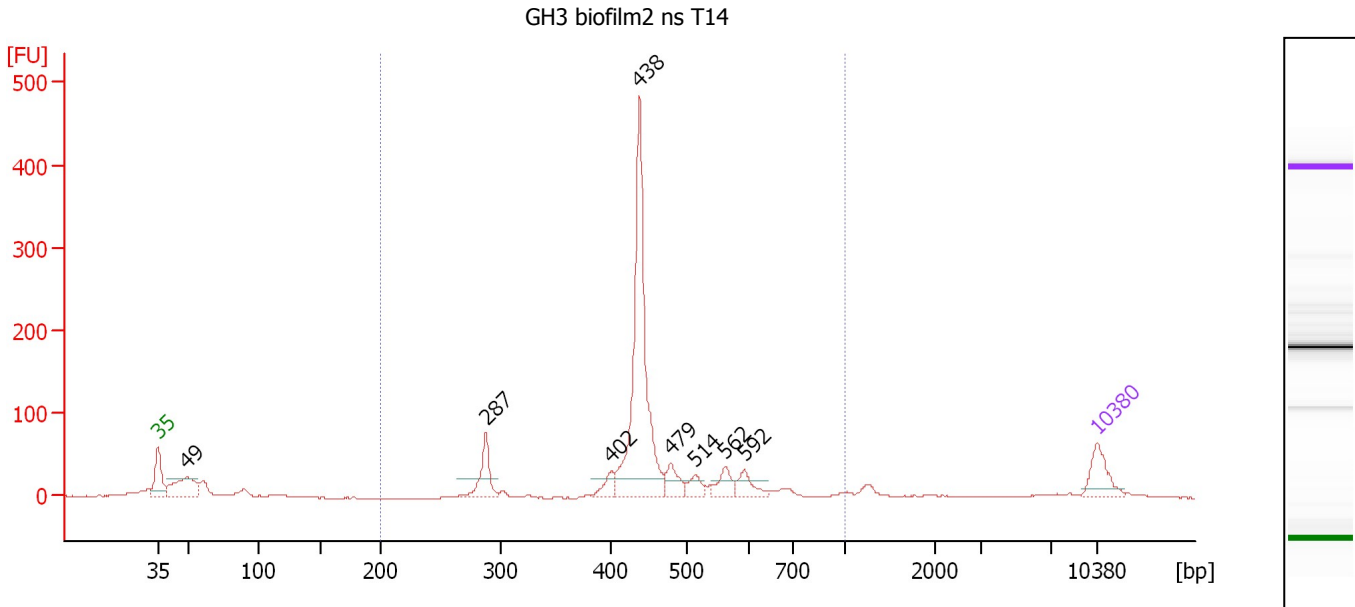
Region table for sample 9 : GH3 biofilm ns T13

From [bp]	Molarity [pmol/l]	Average Size [bp]	Conc. [pg/μl]	To [bp]	Corr. Area	% of Total	Size distribution in CV [%]	Color
200	4,864.8	478	1,434.54	1,000	1,496.1	80	23.4	Blue

Assay Class: High Sensitivity DNA Assay
 Data Path: C:\...ents and Settings\Bioanalyzer\2012-04-10\2012-04-10_004.xad

Created: 4/10/2012 1:05:49 PM
 Modified: 4/10/2012 1:48:39 PM

Electropherogram Summary Continued ...



Overall Results for sample 10 : GH3 biofilm2 ns T14

Number of peaks found: 8 Corr. Area 1: 997.5
 Noise: 0.6

Peak table for sample 10 : GH3 biofilm2 ns T14

Peak	Size [bp]	Conc. [pg/μl]	Molarity [pmol/l]	Observations
1	35	125.00	5,411.3	Lower Marker
2	49	181.52	5,579.8	
3	287	115.51	609.2	
4	402	44.25	167.0	
5	438	749.79	2,594.4	
6	479	64.19	203.2	
7	514	45.69	134.7	
8	562	55.78	150.4	
9	592	53.50	137.0	
10	10,380	75.00	10.9	Upper Marker

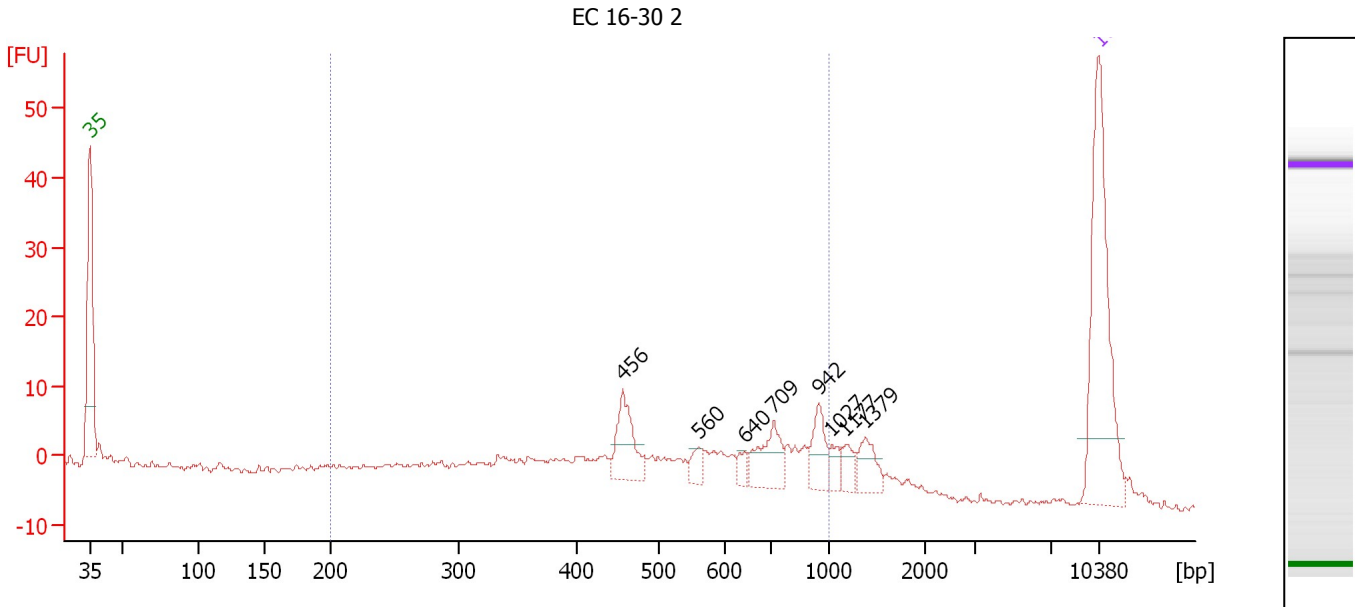
Region table for sample 10 : GH3 biofilm2 ns T14

From [bp]	Molarity [pmol/l]	Average Size [bp]	Conc. [pg/μl]	To [bp]	Corr. Area	% of Total	Size distribution in CV [%]	Color
200	4,372.4	461	1,250.83	1,000	997.5	77	21.0	Blue

Assay Class: High Sensitivity DNA Assay
 Data Path: C:\...ents and Settings\Bioanalyzer\2012-04-10\2012-04-10_004.xad

Created: 4/10/2012 1:05:49 PM
 Modified: 4/10/2012 1:48:39 PM

Electropherogram Summary Continued ...



Setpoint Deviations for sample 11 : EC 16-30 2

Height Threshold [FU] : 5

Overall Results for sample 11 : EC 16-30 2

Number of peaks found: 8 Corr. Area 1: 155.7
 Noise: 0.3

Peak table for sample 11 : EC 16-30 2

Peak	Size [bp]	Conc. [pg/μl]	Molarity [pmol/l]	Observations
1	35	125.00	5,411.3	Lower Marker
2	456	29.25	97.2	
3	560	6.77	18.3	
4	640	5.50	13.0	
5	709	23.96	51.2	
6	942	16.22	26.1	
7	1,027	6.26	9.2	
8	1,177	6.83	8.8	
9	1,379	12.92	14.2	
10	10,380	75.00	10.9	Upper Marker

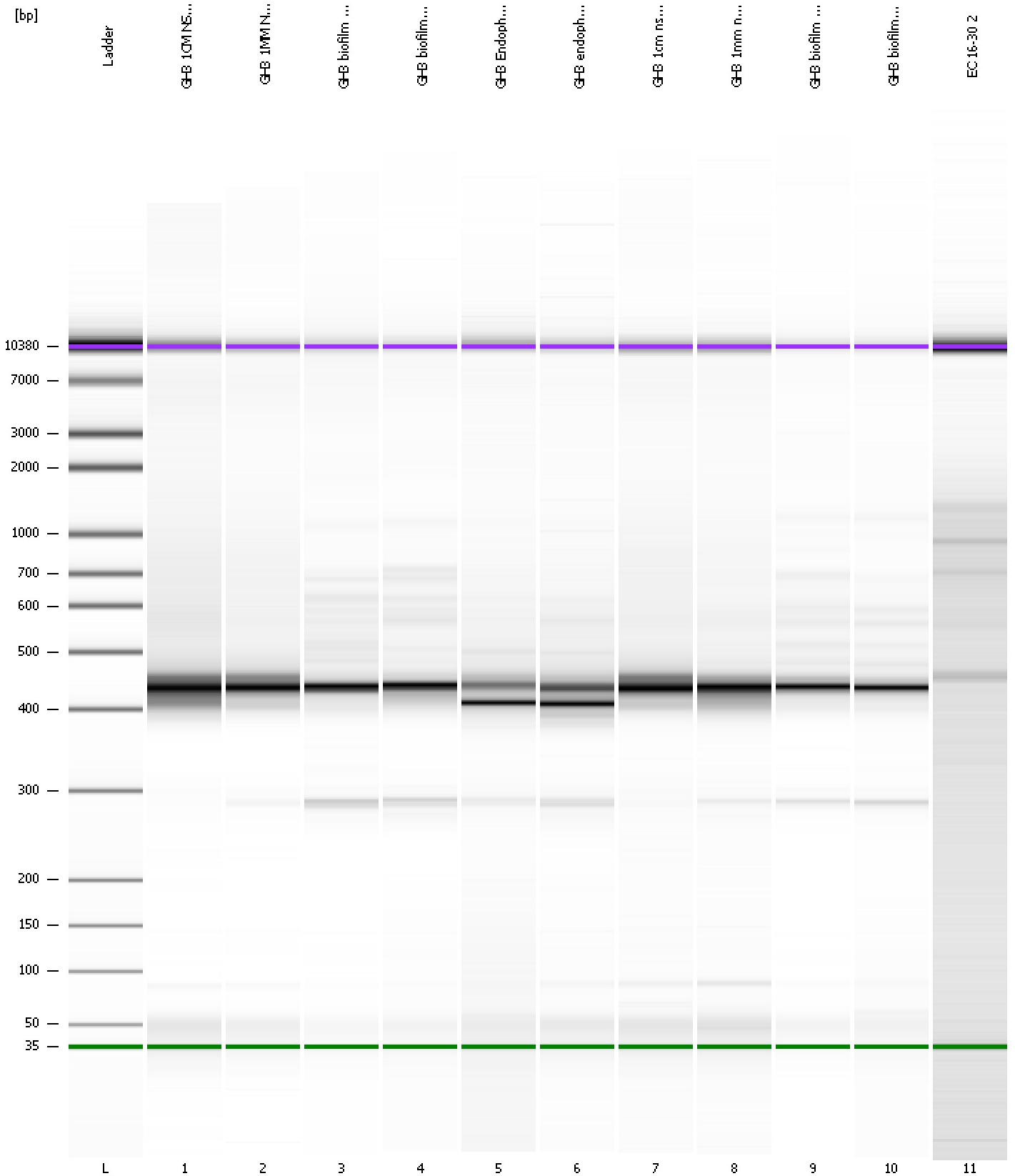
Region table for sample 11 : EC 16-30 2

From [bp]	Molarity [pmol/l]	Average Size [bp]	Conc. [pg/μl]	To [bp]	Corr. Area	% of Total	Size distribution in CV [%]	Color
200	730.3	558	219.42	1,000	155.7	78	36.1	Blue

Assay Class: High Sensitivity DNA Assay
Data Path: C:\...ents and Settings\Bioanalyzer\2012-04-10\2012-04-10_004.xad

Created: 4/10/2012 1:05:49 PM
Modified: 4/10/2012 1:48:39 PM

Gel Image



Assay Class: High Sensitivity DNA Assay
 Data Path: C:\...ents and Settings\Bioanalyzer\2012-04-10\2012-04-10_004.xad

Created: 4/10/2012 1:05:49 PM
 Modified: 4/10/2012 1:48:39 PM

Run Logbook

Description	Number	Source	Category	Sub Category	Time	Time Zone	User	Host
Run ended on port 1 (Number of wells acquired: 12)		Instrument	Run		4/10/2012 1:47:09 PM	(GMT --07:00) Pacific Standard Time	UC Davis	D8XSMGH1
Run started on port 1 (File: C:\Documents and Settings\Bioanalyzer\2012-04-10\2012-04-10_004.xad)		Instrument	Run		4/10/2012 1:05:55 PM	(GMT --07:00) Pacific Standard Time	UC Davis	D8XSMGH1
Product Number : G2938B		Instrument	Run		4/10/2012 1:05:55 PM	(GMT --07:00) Pacific Standard Time	UC Davis	D8XSMGH1
Name :		Instrument	Run		4/10/2012 1:05:55 PM	(GMT --07:00) Pacific Standard Time	UC Davis	D8XSMGH1
Vendor : Agilent Technologies		Instrument	Run		4/10/2012 1:05:55 PM	(GMT --07:00) Pacific Standard Time	UC Davis	D8XSMGH1
Serial# : DE13701086		Instrument	Run		4/10/2012 1:05:55 PM	(GMT --07:00) Pacific Standard Time	UC Davis	D8XSMGH1
Firmware : C.01.069		Instrument	Run		4/10/2012 1:05:55 PM	(GMT --07:00) Pacific Standard Time	UC Davis	D8XSMGH1
Cartridge : Electrode		Instrument	Run		4/10/2012 1:05:55 PM	(GMT --07:00) Pacific Standard Time	UC Davis	D8XSMGH1