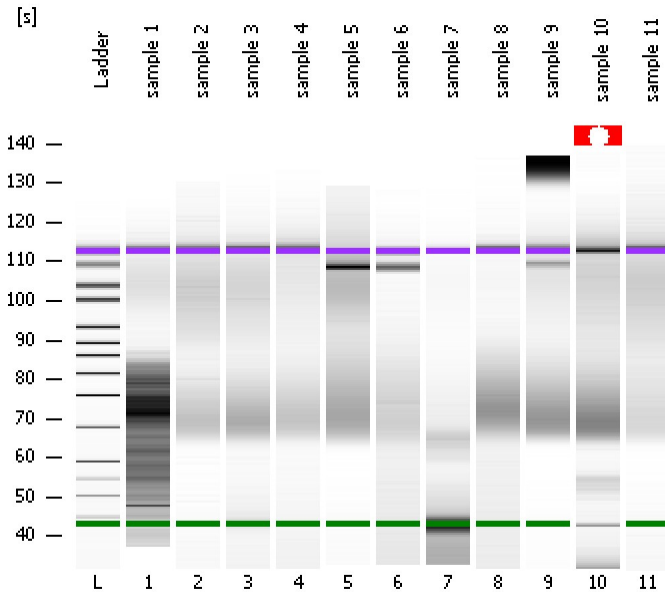


Assay Class: High Sensitivity DNA Assay
Data Path: C:\...ents and Settings\Bioanalyzer\2012-04-11\2012-04-11_001.xad

Created: 4/11/2012 9:34:03 AM
Modified: 4/11/2012 10:15:23 AM

Electrophoresis File Run Summary



Instrument Information:

Instrument Name: DE13701086 Firmware: C.01.069
Serial#: DE13701086 Type: G2938B

Assay Information:

Assay Origin Path: C:\Program Files\Agilent\2100 bioanalyzer\2100 expert\assays\dsDNA\High Sensitivity DNA.xsy
Assay Class: High Sensitivity DNA Assay
Version: 1.03
Assay Comments: Copyright © 2003-2010 Agilent Technologies

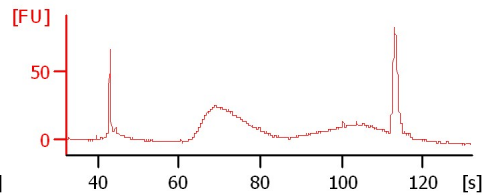
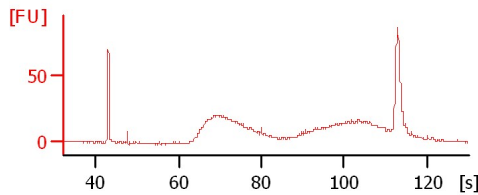
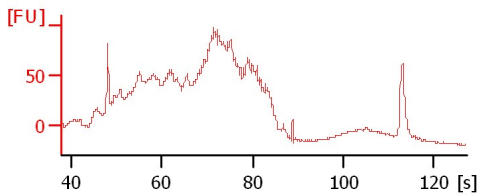
Chip Information:

Chip Lot #: Reagent Kit Lot #: Chip Comments:

sample 1

sample 2

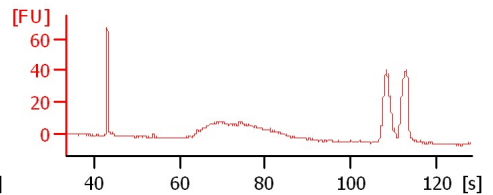
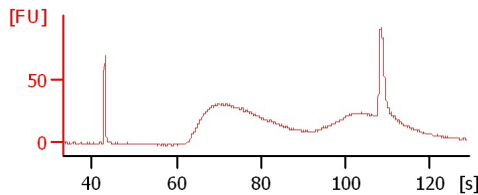
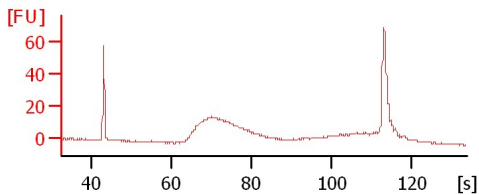
sample 3



sample 4

sample 5

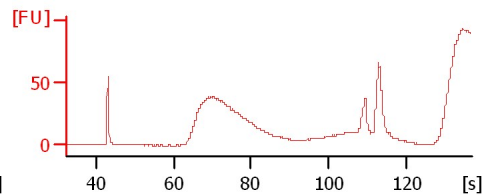
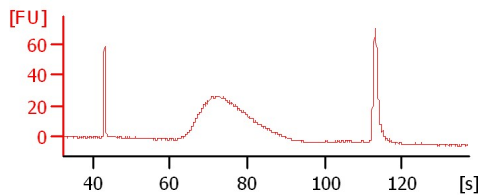
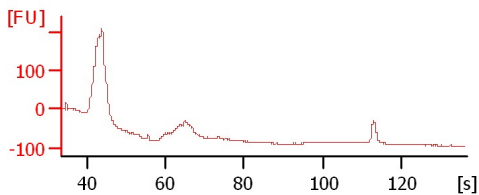
sample 6



sample 7

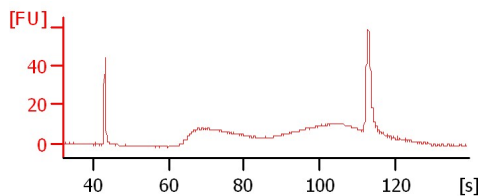
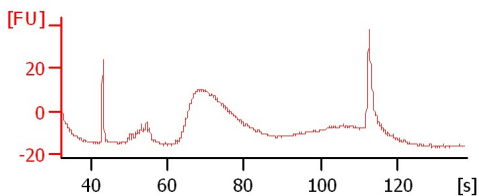
sample 8

sample 9



sample 10

sample 11



Assay Class: High Sensitivity DNA Assay
 Data Path: C:\...ents and Settings\Bioanalyzer\2012-04-11\2012-04-11_001.xad

Created: 4/11/2012 9:34:03 AM
 Modified: 4/11/2012 10:15:23 AM

Electrophoresis File Run Summary (Chip Summary)

Sample Name	Sample Comment	Rest. Digest	Status	Observation	Result Label	Result Color
sample 1		<input type="checkbox"/>	✓			
sample 2		<input type="checkbox"/>	✓			
sample 3		<input type="checkbox"/>	✓			
sample 4		<input type="checkbox"/>	✓			
sample 5		<input type="checkbox"/>	✓			
sample 6		<input type="checkbox"/>	✓			
sample 7		<input type="checkbox"/>	✓			
sample 8		<input type="checkbox"/>	✓			
sample 9		<input type="checkbox"/>	✓			
sample 10		<input type="checkbox"/>	✓			
sample 11		<input type="checkbox"/>	✓			
Ladder		<input type="checkbox"/>	✓			

Chip Lot #

Reagent Kit Lot #

Chip Comments :

Assay Class: High Sensitivity DNA Assay
 Data Path: C:\...ents and Settings\Bioanalyzer\2012-04-11\2012-04-11_001.xad

Created: 4/11/2012 9:34:03 AM
 Modified: 4/11/2012 10:15:23 AM

Electrophoresis Assay Details

General Analysis Settings

Number of Available Sample and Ladder Wells (Max.) : 12
 Minimum Visible Range [s] : 32
 Maximum Visible Range [s] : 138
 Start Analysis Time Range [s] : 33
 End Analysis Time Range [s] : 137.5
 Ladder Concentration [pg/μl] : 1950
 Uses Standard Area for Ladder Fragments
 Lower Marker Concentration [pg/μl] : 125
 Upper Marker Concentration [pg/μl] : 75
 Used Upper Marker for Quantitation
 Standard Curve Fit is Point to Point
 Show Data Aligned to Lower and Upper Marker

Integrator Settings

Integration Start Time [s] : 33.05
 Integration End Time [s] : 137
 Slope Threshold : 0.8
 Height Threshold [FU] : 5
 Area Threshold : 0.1
 Width Threshold [s] : 0.6
 Baseline Plateau [s] : 0.5

Filter Settings

Filter Width [s] : 0.5
 Polynomial Order : 4

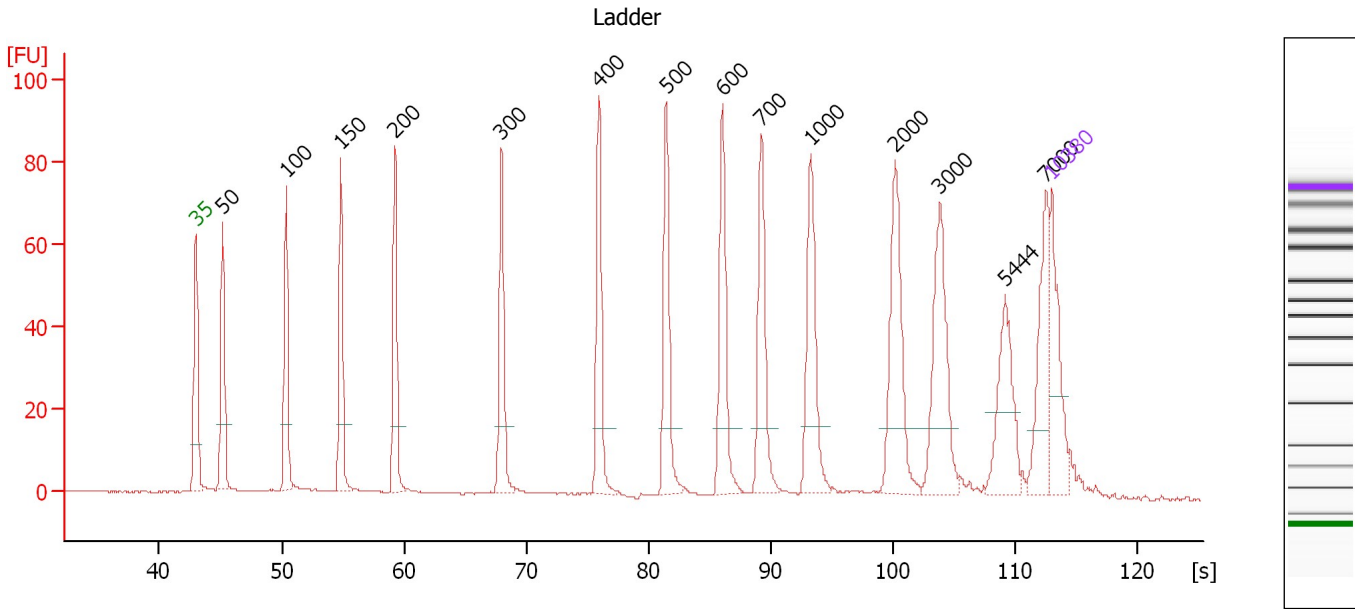
Ladder

Ladder Peak	Size	Area
1	35	160
2	50	210
3	100	208
4	150	221
5	200	242
6	300	270
7	400	305
8	500	306
9	600	336
10	700	321
11	1000	366
12	2000	413
13	3000	411
14	7000	400
15	10380	214

Assay Class: High Sensitivity DNA Assay
 Data Path: C:\...ents and Settings\Bioanalyzer\2012-04-11\2012-04-11_001.xad

Created: 4/11/2012 9:34:03 AM
 Modified: 4/11/2012 10:15:23 AM

Electropherogram Summary



Overall Results for Ladder

Noise: 0.1

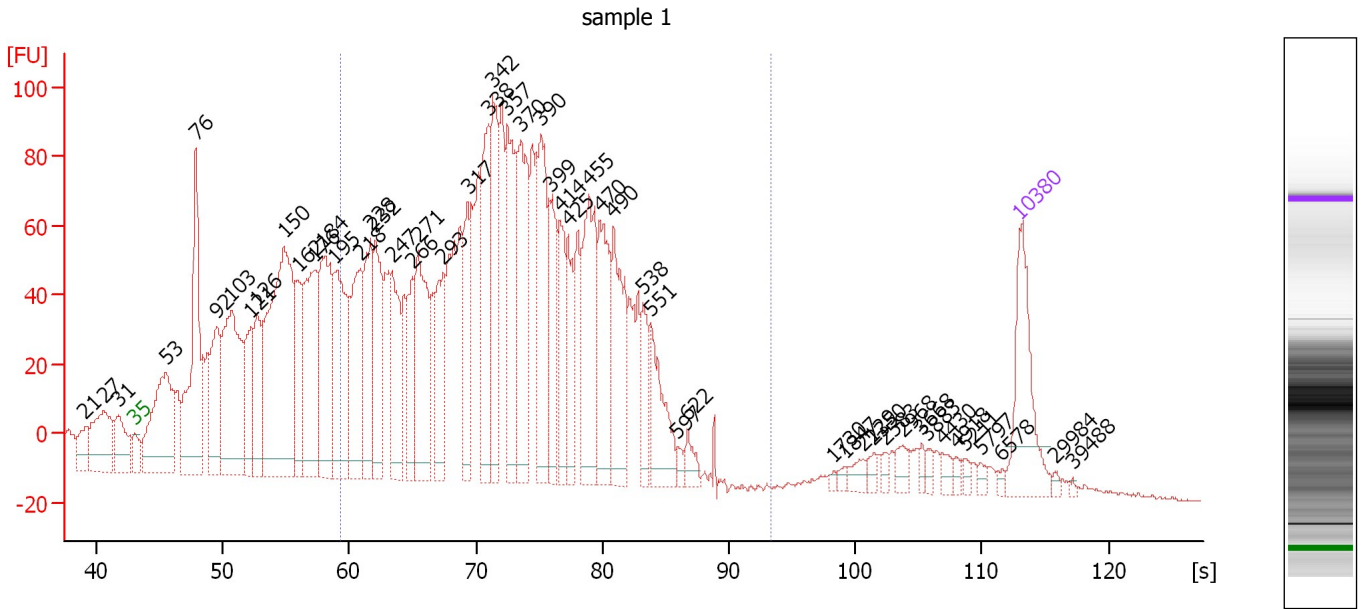
Peak table for Ladder

Peak	Size [bp]	Conc. [pg/μl]	Molarity [pmol/l]	Observations
1	35	125.00	5,411.3	Lower Marker
2	50	150.00	4,545.5	Ladder Peak
3	100	150.00	2,272.7	Ladder Peak
4	150	150.00	1,515.2	Ladder Peak
5	200	150.00	1,136.4	Ladder Peak
6	300	150.00	757.6	Ladder Peak
7	400	150.00	568.2	Ladder Peak
8	500	150.00	454.5	Ladder Peak
9	600	150.00	378.8	Ladder Peak
10	700	150.00	324.7	Ladder Peak
11	1,000	150.00	227.3	Ladder Peak
12	2,000	150.00	113.6	Ladder Peak
13	3,000	150.00	75.8	Ladder Peak
14	5,444	0.00	0.0	
15	7,000	150.00	32.5	Ladder Peak
16	10,380	75.00	10.9	Upper Marker

Assay Class: High Sensitivity DNA Assay
 Data Path: C:\...ents and Settings\Bioanalyzer\2012-04-11\2012-04-11_001.xad

Created: 4/11/2012 9:34:03 AM
 Modified: 4/11/2012 10:15:23 AM

Electropherogram Summary Continued ...



Overall Results for sample 1 : sample 1

Number of peaks found: 52 Corr. Area 1: 2,702.5
 Noise: 0.8

Peak table for sample 1 : sample 1

Peak	Size [bp]	Conc. [pg/µl]	Molarity [pmol/l]	Observations
1	21	0.00	0.0	
2	27	0.00	0.0	
3	31	0.00	0.0	
4	35	125.00	5,411.3	Lower Marker
5	53	211.49	6,048.2	
6	76	260.54	5,199.9	
7	92	131.39	2,166.4	
8	103	260.95	3,823.4	
9	121	96.66	1,210.9	
10	126	102.93	1,240.8	
11	150	418.03	4,226.8	
12	162	100.73	940.4	
13	176	177.73	1,528.6	
14	184	183.12	1,509.3	
15	195	177.53	1,377.2	
16	218	141.65	983.7	
17	228	117.52	781.3	
18	232	114.84	750.6	
19	247	110.47	677.7	
20	266	63.15	360.3	
21	271	150.09	839.5	
22	293	96.45	498.2	
23	317	81.21	387.8	
24	338	119.17	534.0	
25	342	135.10	597.9	
26	357	147.47	626.2	

Assay Class: High Sensitivity DNA Assay
 Data Path: C:\...ents and Settings\Bioanalyzer\2012-04-11\2012-04-11_001.xad


Created: 4/11/2012 9:34:03 AM
 Modified: 4/11/2012 10:15:23 AM

Electropherogram Summary Continued ...

... Peak table for sample 1 : sample 1

Peak	Size [bp]	Conc. [pg/µl]	Molarity [pmol/l]	Observations
27	370	138.03	565.0	
28	390	129.01	500.6	
29	399	78.41	297.8	
30	414	57.81	211.6	
31	425	63.55	226.4	
32	455	138.02	460.0	
33	470	100.27	323.3	
34	490	112.57	348.2	
35	538	36.98	104.1	
36	551	68.84	189.2	
37	597	7.48	19.0	
38	622	15.48	37.7	
39	1,730	2.63	2.3	
40	1,847	4.08	3.3	
41	2,129	9.52	6.8	
42	2,350	6.12	3.9	
43	2,583	4.82	2.8	
44	2,968	11.55	5.9	
45	3,668	5.49	2.3	
46	3,883	5.98	2.3	
47	4,430	8.15	2.8	
48	4,918	4.58	1.4	
49	5,211	4.66	1.4	
50	5,797	5.11	1.3	
51	6,578	3.30	0.8	
52	10,380	75.00	10.9	Upper Marker
53	29,984	0.00	0.0	
54	39,488	0.00	0.0	

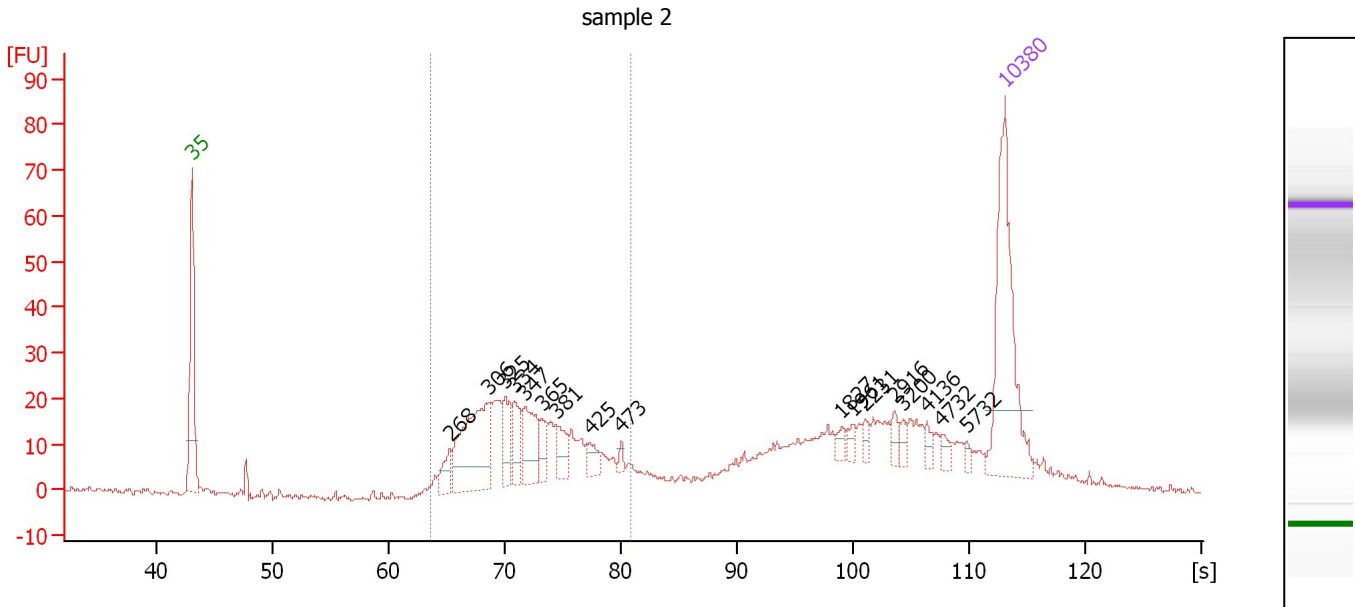
Region table for sample 1 : sample 1

From [bp]	Molarity [pmol/l]	Average Size [bp]	Conc. [pg/µl]	To [bp]	Corr. Area	% of Total	Size distribution in CV [%]	Color
200	12,817.0	366	2,773.93	1,000	2,702.5	64	26.5	

Assay Class: High Sensitivity DNA Assay
 Data Path: C:\...ents and Settings\Bioanalyzer\2012-04-11\2012-04-11_001.xad

Created: 4/11/2012 9:34:03 AM
 Modified: 4/11/2012 10:15:23 AM

Electropherogram Summary Continued ...



Overall Results for sample 2 : sample 2

Number of peaks found: 17 Corr. Area 1: 322.4
 Noise: 0.6

Peak table for sample 2 : sample 2

Peak	Size [bp]	Conc. [pg/μl]	Molarity [pmol/l]	Observations
1	35	125.00	5,411.3	Lower Marker
2	268	14.79	83.6	
3	306	84.18	416.3	
4	325	19.83	92.5	
5	334	19.30	87.5	
6	347	32.06	140.2	
7	365	12.07	50.2	
8	381	14.01	55.7	
9	425	9.36	33.4	
10	473	2.97	9.5	
11	1,827	4.06	3.4	
12	1,961	4.30	3.3	
13	2,231	4.16	2.8	
14	2,916	5.71	3.0	
15	3,200	4.39	2.1	
16	4,136	4.69	1.7	
17	4,732	4.25	1.4	
18	5,732	2.42	0.6	
19	10,380	75.00	10.9	Upper Marker

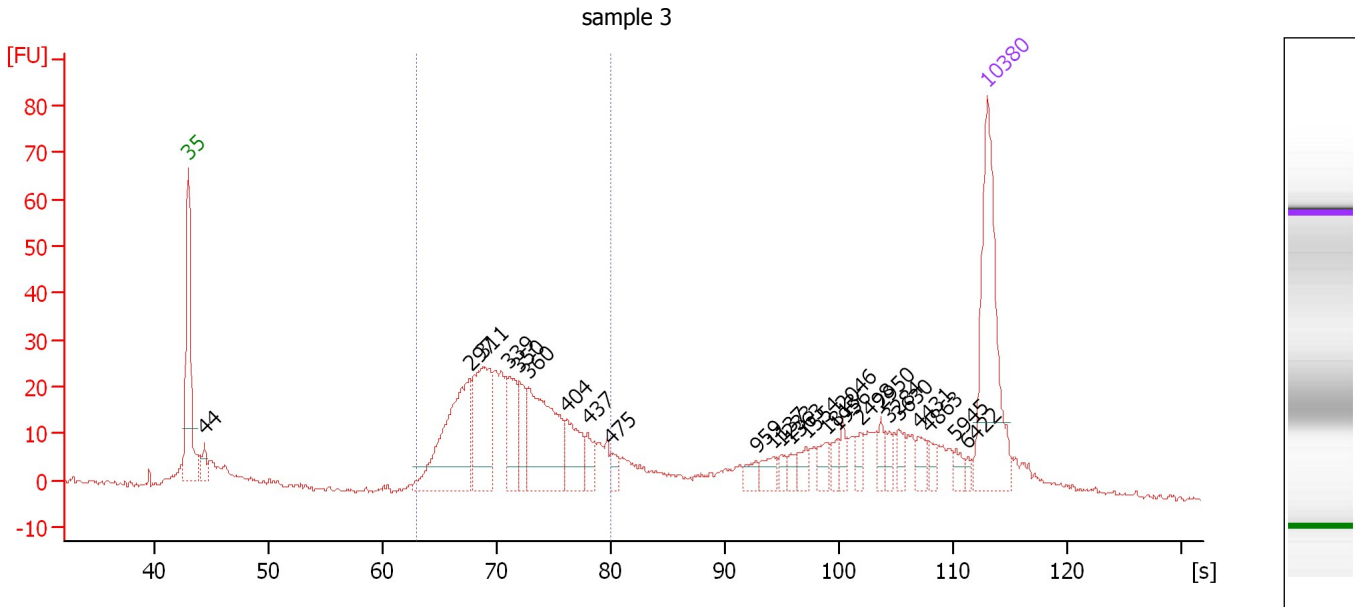
Region table for sample 2 : sample 2

From [bp]	Molarity [pmol/l]	Average Size [bp]	Conc. [pg/μl]	To [bp]	Corr. Area	% of Total	Size distribution in CV [%]	Color
249	1,469.9	350	328.29	489	322.4	49	16.0	Blue

Assay Class: High Sensitivity DNA Assay
 Data Path: C:\...ents and Settings\Bioanalyzer\2012-04-11\2012-04-11_001.xad

Created: 4/11/2012 9:34:03 AM
 Modified: 4/11/2012 10:15:23 AM

Electropherogram Summary Continued ...



Overall Results for sample 3 : sample 3

Number of peaks found: 25 Corr. Area 1: 397.3
 Noise: 0.5

Peak table for sample 3 : sample 3

Peak	Size [bp]	Conc. [pg/μl]	Molarity [pmol/l]	Observations
1	35	125.00	5,411.3	Lower Marker
2	44	11.32	386.9	
3	297	102.74	524.7	
4	311	70.64	344.7	
5	339	32.33	144.5	
6	350	20.90	90.4	
7	360	83.50	351.2	
8	404	29.89	112.1	
9	437	12.10	41.9	
10	475	6.31	20.1	
11	959	6.52	10.3	
12	1,137	8.04	10.7	
13	1,233	4.46	5.5	
14	1,363	4.51	5.0	
15	1,554	7.20	7.0	
16	1,813	7.99	6.7	
17	1,956	5.95	4.6	
18	2,046	5.69	4.2	
19	2,498	6.53	4.0	
20	2,950	5.96	3.1	
21	3,284	5.49	2.5	
22	3,630	7.04	2.9	
23	4,431	6.93	2.4	
24	4,863	4.99	1.6	
25	5,945	4.77	1.2	
26	6,422	2.63	0.6	


Assay Class: High Sensitivity DNA Assay
Data Path: C:\...ents and Settings\Bioanalyzer\2012-04-11\2012-04-11_001.xad

Created: 4/11/2012 9:34:03 AM
Modified: 4/11/2012 10:15:23 AM

Electropherogram Summary Continued ...**... Peak table for sample 3 : sample 3**

Peak	Size [bp]	Conc. [pg/ μ l]	Molarity [pmol/l]	Observations
27	10,380	75.00	10.9	Upper Marker

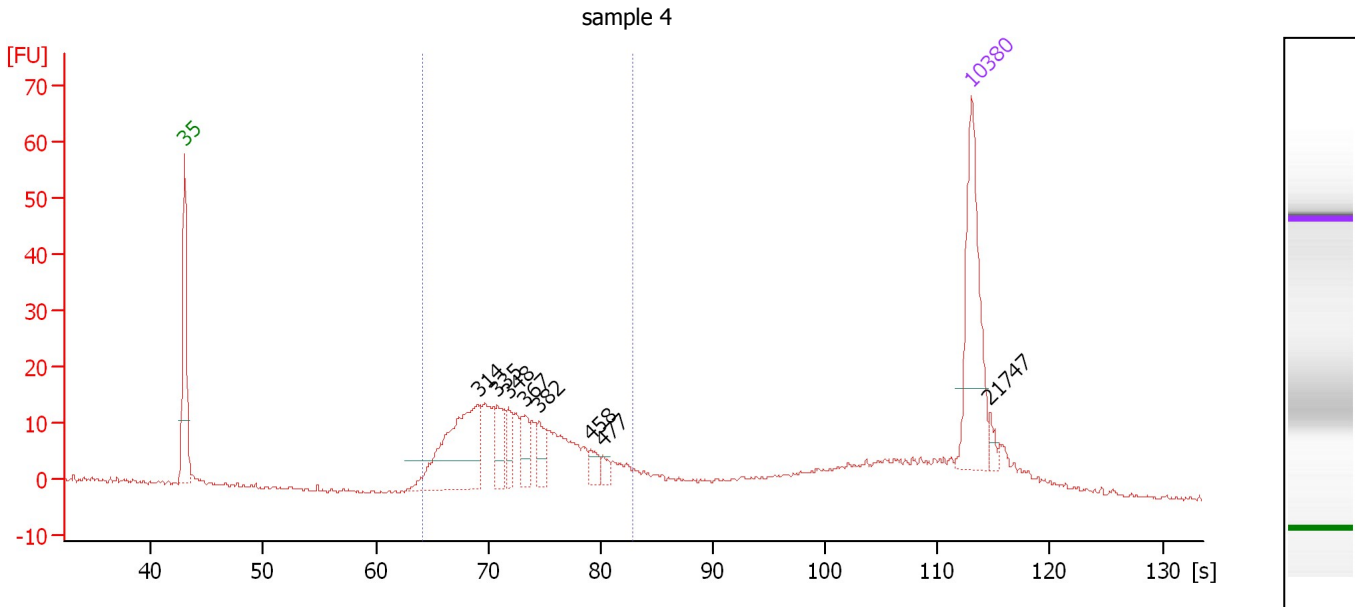
Region table for sample 3 : sample 3

From [bp]	Molarity [pmol/l]	Average Size [bp]	Conc. [pg/ μ l]	To [bp]	Corr. Area	% of Total	Size distribution in CV [%]	Color
242	1,811.6	345	400.29	474	397.3	56	15.3	

Assay Class: High Sensitivity DNA Assay
 Data Path: C:\...ents and Settings\Bioanalyzer\2012-04-11\2012-04-11_001.xad

Created: 4/11/2012 9:34:03 AM
 Modified: 4/11/2012 10:15:23 AM

Electropherogram Summary Continued ...



Overall Results for sample 4 : sample 4

Number of peaks found: 8 Corr. Area 1: 233.4
 Noise: 0.4

Peak table for sample 4 : sample 4

Peak	Size [bp]	Conc. [pg/μl]	Molarity [pmol/l]	Observations
1	35	125.00	5,411.3	Lower Marker
2	314	116.58	562.8	
3	335	26.59	120.1	
4	348	18.31	79.7	
5	367	19.05	78.6	
6	382	19.01	75.3	
7	458	10.53	34.9	
8	477	6.22	19.7	
9	10,380	75.00	10.9	Upper Marker
10	21,747	0.00	0.0	

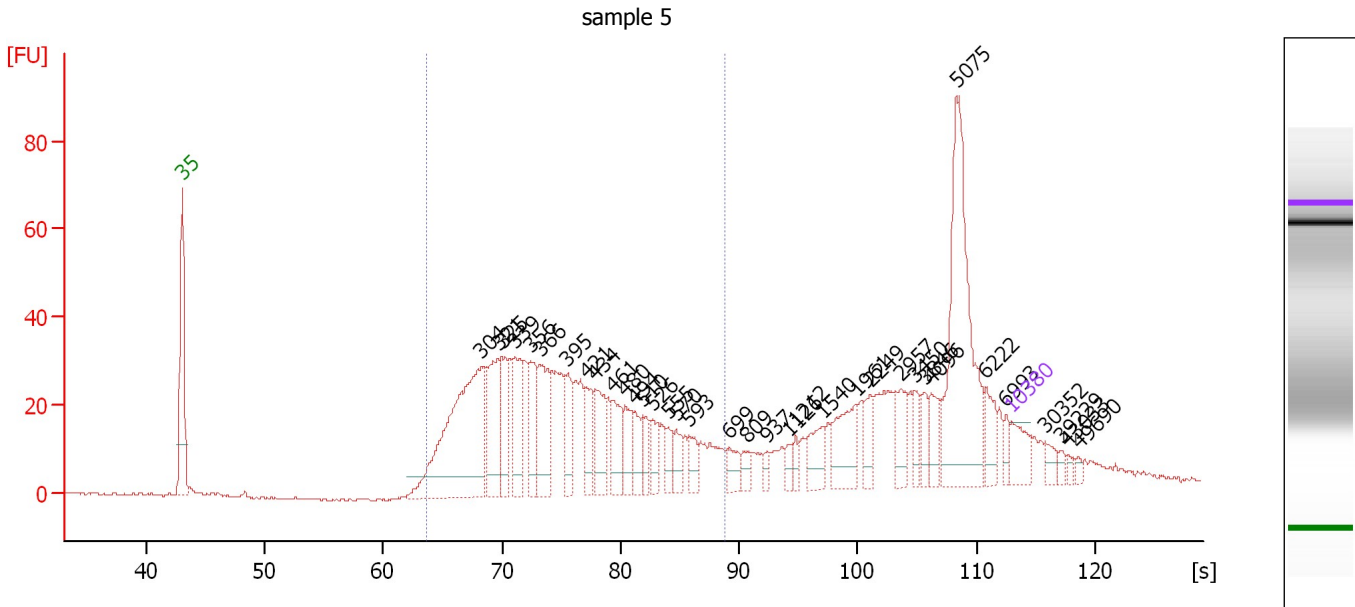
Region table for sample 4 : sample 4

From [bp]	Molarity [pmol/l]	Average Size [bp]	Conc. [pg/μl]	To [bp]	Corr. Area	% of Total	Size distribution in CV [%]	Color
255	1,422.1	362	327.14	530	233.4	64	17.3	Blue

Assay Class: High Sensitivity DNA Assay
 Data Path: C:\...ents and Settings\Bioanalyzer\2012-04-11\2012-04-11_001.xad

Created: 4/11/2012 9:34:03 AM
 Modified: 4/11/2012 10:15:23 AM

Electropherogram Summary Continued ...



Overall Results for sample 5 : sample 5

Number of peaks found: 36 Corr. Area 1: 698.1
 Noise: 0.2

Peak table for sample 5 : sample 5

Peak	Size [bp]	Conc. [pg/μl]	Molarity [pmol/l]	Observations
1	35	125.00	5,411.3	Lower Marker
2	304	895.65	4,468.4	
3	321	300.82	1,418.2	
4	325	152.27	709.1	
5	339	214.47	958.5	
6	356	157.03	668.1	
7	366	237.02	981.6	
8	395	119.09	456.9	
9	421	111.84	402.2	
10	434	155.12	541.0	
11	461	128.63	423.1	
12	480	96.38	304.0	
13	494	88.45	271.2	
14	510	63.86	189.8	
15	526	76.79	221.0	
16	555	50.52	137.9	
17	570	60.05	159.7	
18	593	55.60	142.0	
19	699	62.71	135.9	
20	809	37.76	70.7	
21	937	24.84	40.2	
22	1,126	27.18	36.6	
23	1,212	29.80	37.3	
24	1,540	83.16	81.8	
25	1,961	143.12	110.6	
26	2,249	60.24	40.6	

Assay Class: High Sensitivity DNA Assay
 Data Path: C:\...ents and Settings\Bioanalyzer\2012-04-11\2012-04-11_001.xad


Created: 4/11/2012 9:34:03 AM
 Modified: 4/11/2012 10:15:23 AM

Electropherogram Summary Continued ...

... Peak table for sample 5 : sample 5

Peak	Size [bp]	Conc. [pg/μl]	Molarity [pmol/l]	Observations
27	2,957	80.80	41.4	
28	3,450	46.69	20.5	
29	3,846	45.36	17.9	
30	4,096	67.19	24.9	
31	5,075	588.61	175.7	
32	6,222	76.58	18.6	
33	6,993	30.79	6.7	
34	10,380	75.00	10.9	Upper Marker
35	30,352	0.00	0.0	
36	39,229	0.00	0.0	
37	43,033	0.00	0.0	
38	49,690	0.00	0.0	

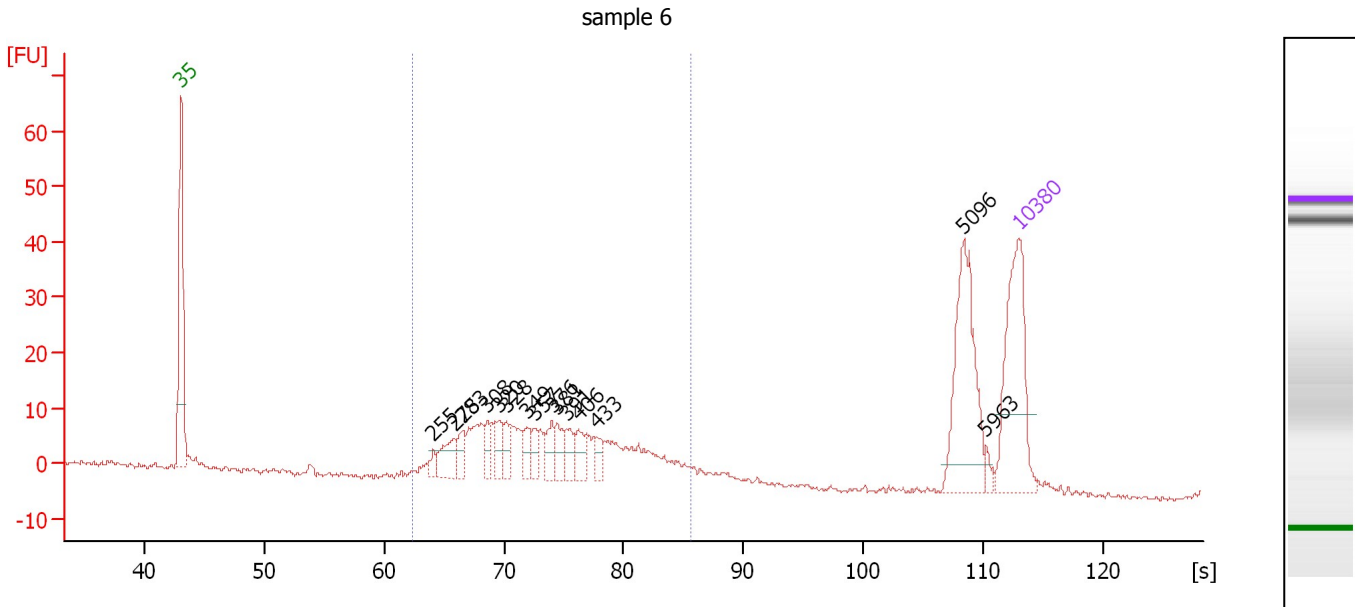
Region table for sample 5 : sample 5

From [bp]	Molarity [pmol/l]	Average Size [bp]	Conc. [pg/μl]	To [bp]	Corr. Area	% of Total	Size distribution in CV [%]	Color
251	14,870.4	401	3,621.39	687	698.1	58	25.1	

Assay Class: High Sensitivity DNA Assay
 Data Path: C:\...ents and Settings\Bioanalyzer\2012-04-11\2012-04-11_001.xad

Created: 4/11/2012 9:34:03 AM
 Modified: 4/11/2012 10:15:23 AM

Electropherogram Summary Continued ...



Overall Results for sample 6 : sample 6

Number of peaks found: 15 Corr. Area 1: 207.9
 Noise: 0.5

Peak table for sample 6 : sample 6

Peak	Size [bp]	Conc. [pg/μl]	Molarity [pmol/l]	Observations
1	35	125.00	5,411.3	Lower Marker
2	255	6.91	41.0	
3	275	25.23	139.1	
4	283	14.45	77.5	
5	308	14.01	68.9	
6	320	15.93	75.5	
7	328	13.14	60.8	
8	349	11.52	50.0	
9	357	11.21	47.6	
10	376	14.60	58.9	
11	381	14.47	57.5	
12	391	13.36	51.8	
13	406	13.97	52.2	
14	433	10.31	36.1	
15	5,096	84.77	25.2	
16	5,963	3.90	1.0	
17	10,380	75.00	10.9	Upper Marker

Region table for sample 6 : sample 6

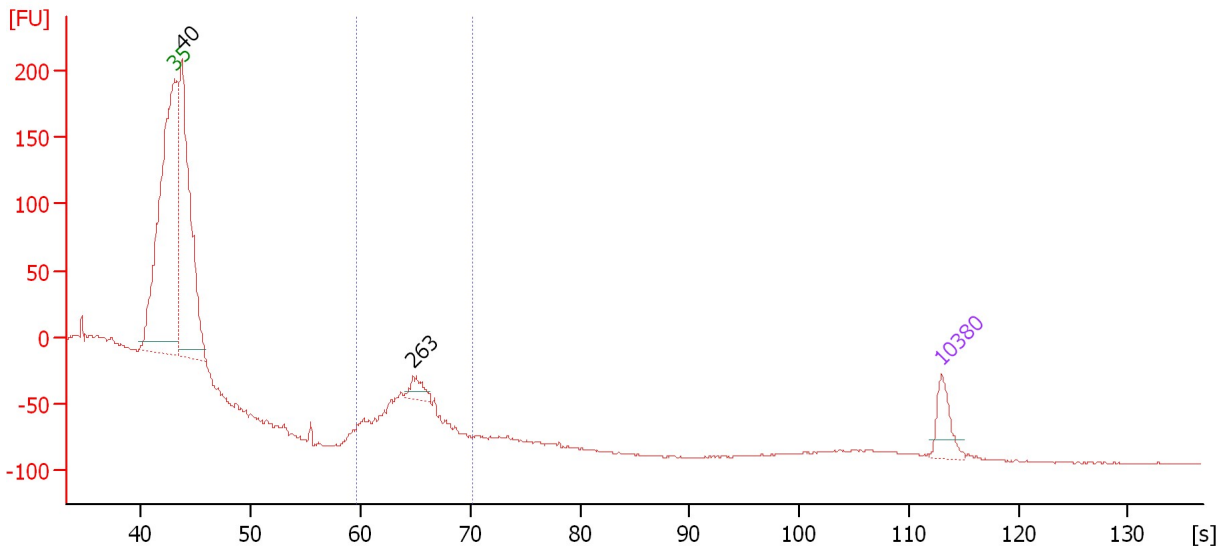
From [bp]	Molarity [pmol/l]	Average Size [bp]	Conc. [pg/μl]	To [bp]	Corr. Area	% of Total	Size distribution in CV [%]	Color
236	1,275.5	379	299.40	589	207.9	69	21.4	Blue

Assay Class: High Sensitivity DNA Assay
 Data Path: C:\...ents and Settings\Bioanalyzer\2012-04-11\2012-04-11_001.xad

Created: 4/11/2012 9:34:03 AM
 Modified: 4/11/2012 10:15:23 AM

Electropherogram Summary Continued ...

sample 7



Overall Results for sample 7 : sample 7

Number of peaks found: 2 Corr. Area 1: 0.0
 Noise: 0.4

Peak table for sample 7 : sample 7

Peak	Size [bp]	Conc. [pg/μl]	Molarity [pmol/l]	Observations
1	35	125.00	5,411.3	Lower Marker
2	40	1,320.99	50,026.2	
3	263	58.86	338.6	
4	10,380	75.00	10.9	Upper Marker

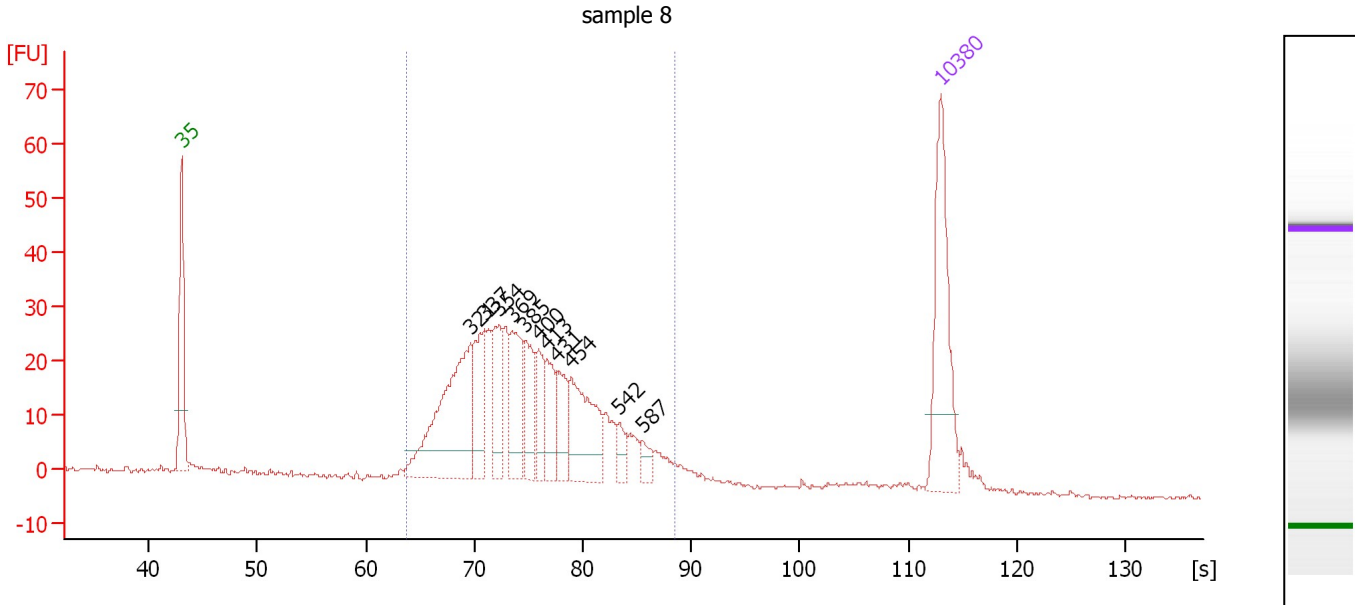
Region table for sample 7 : sample 7

From [bp]	Molarity [pmol/l]	Average Size [bp]	Conc. [pg/μl]	To [bp]	Corr. Area	% of Total	Size distribution in CV [%]	Color
204	0.0	0	0.00	328	0.0	0	0.0	Blue

Assay Class: High Sensitivity DNA Assay
 Data Path: C:\...ents and Settings\Bioanalyzer\2012-04-11\2012-04-11_001.xad

Created: 4/11/2012 9:34:03 AM
 Modified: 4/11/2012 10:15:23 AM

Electropherogram Summary Continued ...



Overall Results for sample 8 : sample 8

Number of peaks found: 11 Corr. Area 1: 550.5
 Noise: 0.4

Peak table for sample 8 : sample 8

Peak	Size [bp]	Conc. [pg/μl]	Molarity [pmol/l]	Observations
1	35	125.00	5,411.3	Lower Marker
2	321	148.99	703.9	
3	337	52.53	236.2	
4	354	44.42	189.9	
5	369	54.03	222.1	
6	385	36.86	145.1	
7	400	29.96	113.6	
8	413	31.96	117.2	
9	431	30.18	106.1	
10	454	73.66	245.7	
11	542	11.71	32.8	
12	587	9.65	24.9	
13	10,380	75.00	10.9	Upper Marker

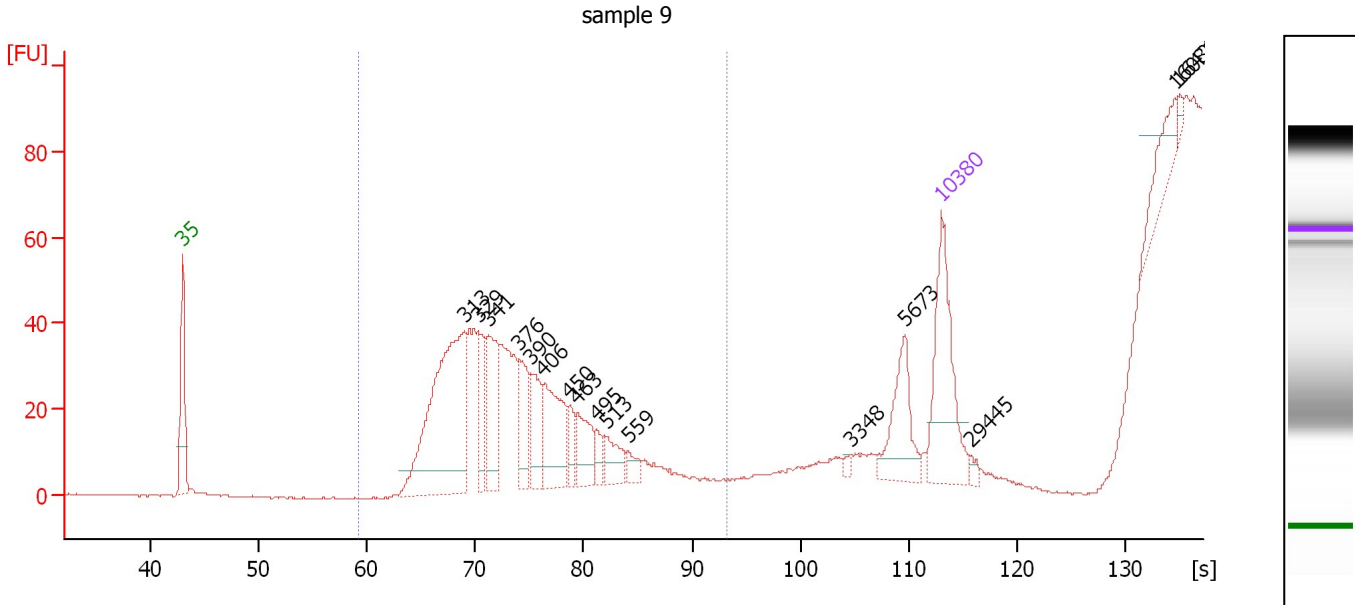
Region table for sample 8 : sample 8

From [bp]	Molarity [pmol/l]	Average Size [bp]	Conc. [pg/μl]	To [bp]	Corr. Area	% of Total	Size distribution in CV [%]	Color
252	2,668.5	399	659.46	677	550.5	91	22.3	Blue

Assay Class: High Sensitivity DNA Assay
 Data Path: C:\...ents and Settings\Bioanalyzer\2012-04-11\2012-04-11_001.xad

Created: 4/11/2012 9:34:03 AM
 Modified: 4/11/2012 10:15:23 AM

Electropherogram Summary Continued ...



Overall Results for sample 9 : sample 9

Number of peaks found: 16 Corr. Area 1: 30.7
 Noise: 0.2

Peak table for sample 9 : sample 9

Peak	Size [bp]	Conc. [pg/µl]	Molarity [pmol/l]	Observations
1	35	125.00	5,411.3	Lower Marker
2	313	230.51	1,114.2	
3	329	41.63	191.7	
4	341	69.78	310.1	
5	376	41.96	168.9	
6	390	41.97	163.0	
7	406	67.64	252.2	
8	450	15.49	52.1	
9	463	33.11	108.4	
10	495	12.36	37.8	
11	513	21.58	63.7	
12	559	9.86	26.7	
13	3,348	2.77	1.3	
14	5,673	46.22	12.3	
15	10,380	75.00	10.9	Upper Marker
16	29,445	0.00	0.0	
17	160,818	0.00	0.0	
18	164,285	0.00	0.0	

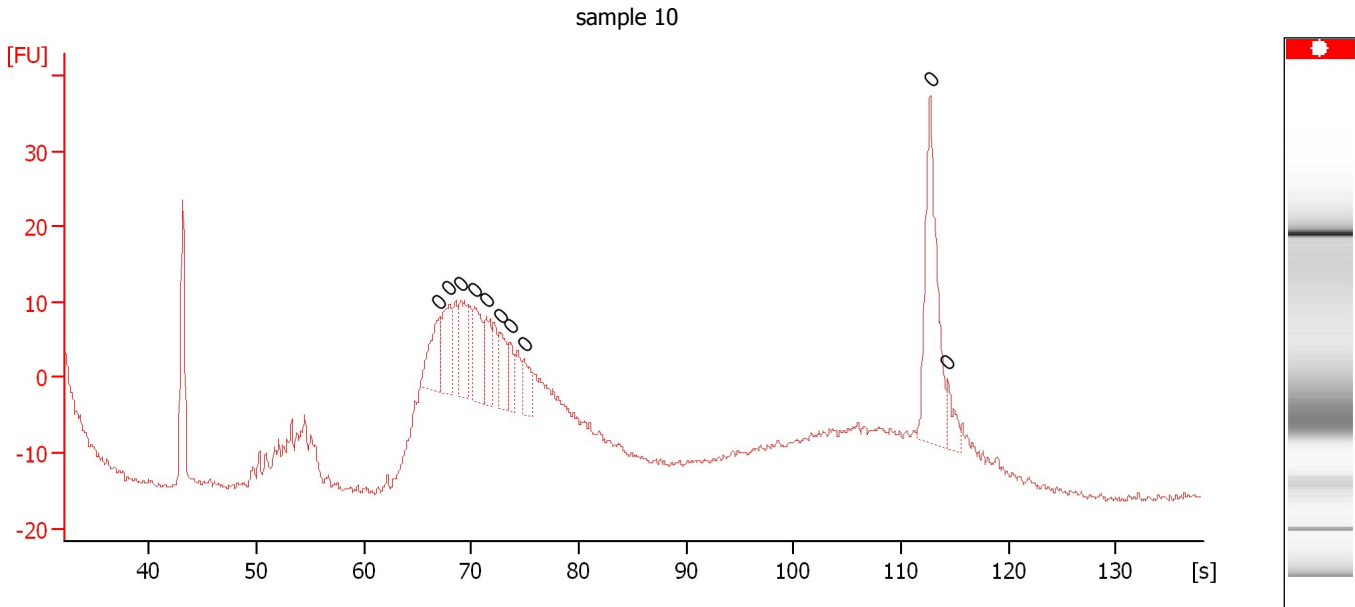
Region table for sample 9 : sample 9

From [bp]	Molarity [pmol/l]	Average Size [bp]	Conc. [pg/µl]	To [bp]	Corr. Area	% of Total	Size distribution in CV [%]	Color
200	170.2	317	35.59	1,000	30.7	92	5.0	Blue

Assay Class: High Sensitivity DNA Assay
Data Path: C:\...ents and Settings\Bioanalyzer\2012-04-11\2012-04-11_001.xad

Created: 4/11/2012 9:34:03 AM
Modified: 4/11/2012 10:15:23 AM

Electropherogram Summary Continued ...



Overall Results for sample 10 : sample 10

Number of peaks found: 0 Noise: 0.5

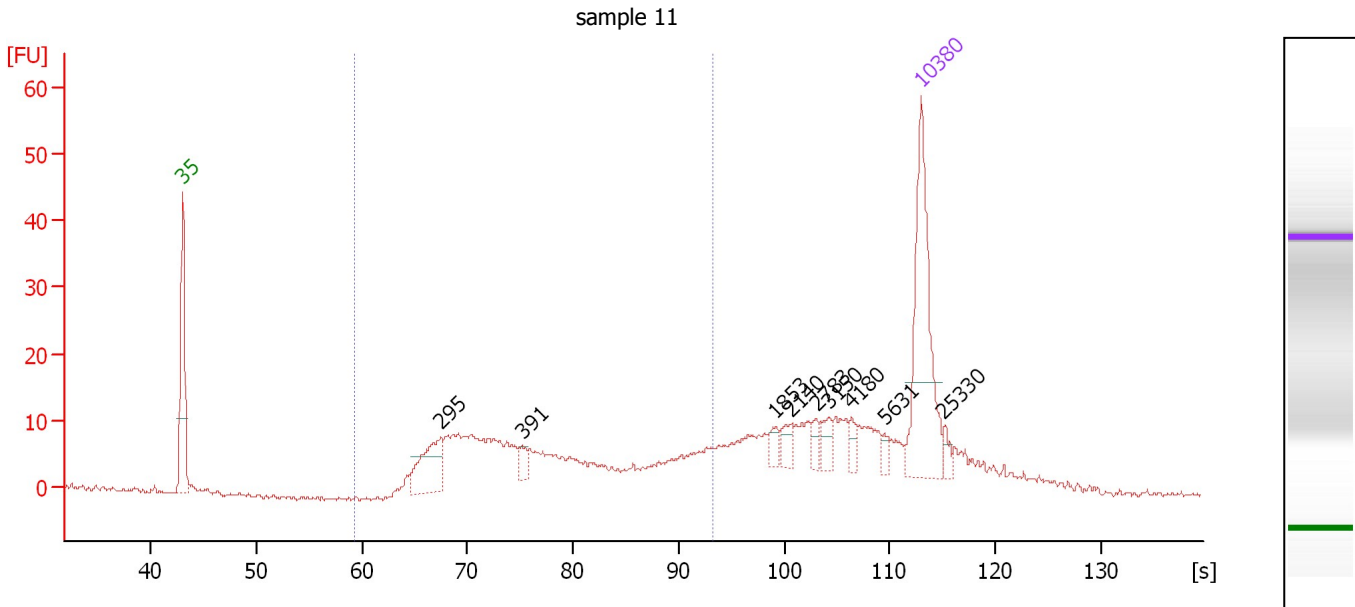
Peak table for sample 10 : sample 10

Peak	Size [bp]	Conc. [pg/μl]	Molarity [pmol/l]	Observations
1	0	0.00	0.0	
2	0	0.00	0.0	
3	0	0.00	0.0	
4	0	0.00	0.0	
5	0	0.00	0.0	
6	0	0.00	0.0	
7	0	0.00	0.0	
8	0	0.00	0.0	
9	0	0.00	0.0	
10	0	0.00	0.0	

Assay Class: High Sensitivity DNA Assay
 Data Path: C:\...ents and Settings\Bioanalyzer\2012-04-11\2012-04-11_001.xad

Created: 4/11/2012 9:34:03 AM
 Modified: 4/11/2012 10:15:23 AM

Electropherogram Summary Continued ...



Overall Results for sample 11 : sample 11

Number of peaks found: 9 Corr. Area 1: 206.9
 Noise: 0.4

Peak table for sample 11 : sample 11

Peak	Size [bp]	Conc. [pg/μl]	Molarity [pmol/l]	Observations
1	35	125.00	5,411.3	Lower Marker
2	295	43.80	225.2	
3	391	7.49	29.0	
4	1,853	6.14	5.0	
5	2,140	7.89	5.6	
6	2,783	5.81	3.2	
7	3,150	7.83	3.8	
8	4,180	5.19	1.9	
9	5,631	3.88	1.0	
10	10,380	75.00	10.9	Upper Marker
11	25,330	0.00	0.0	

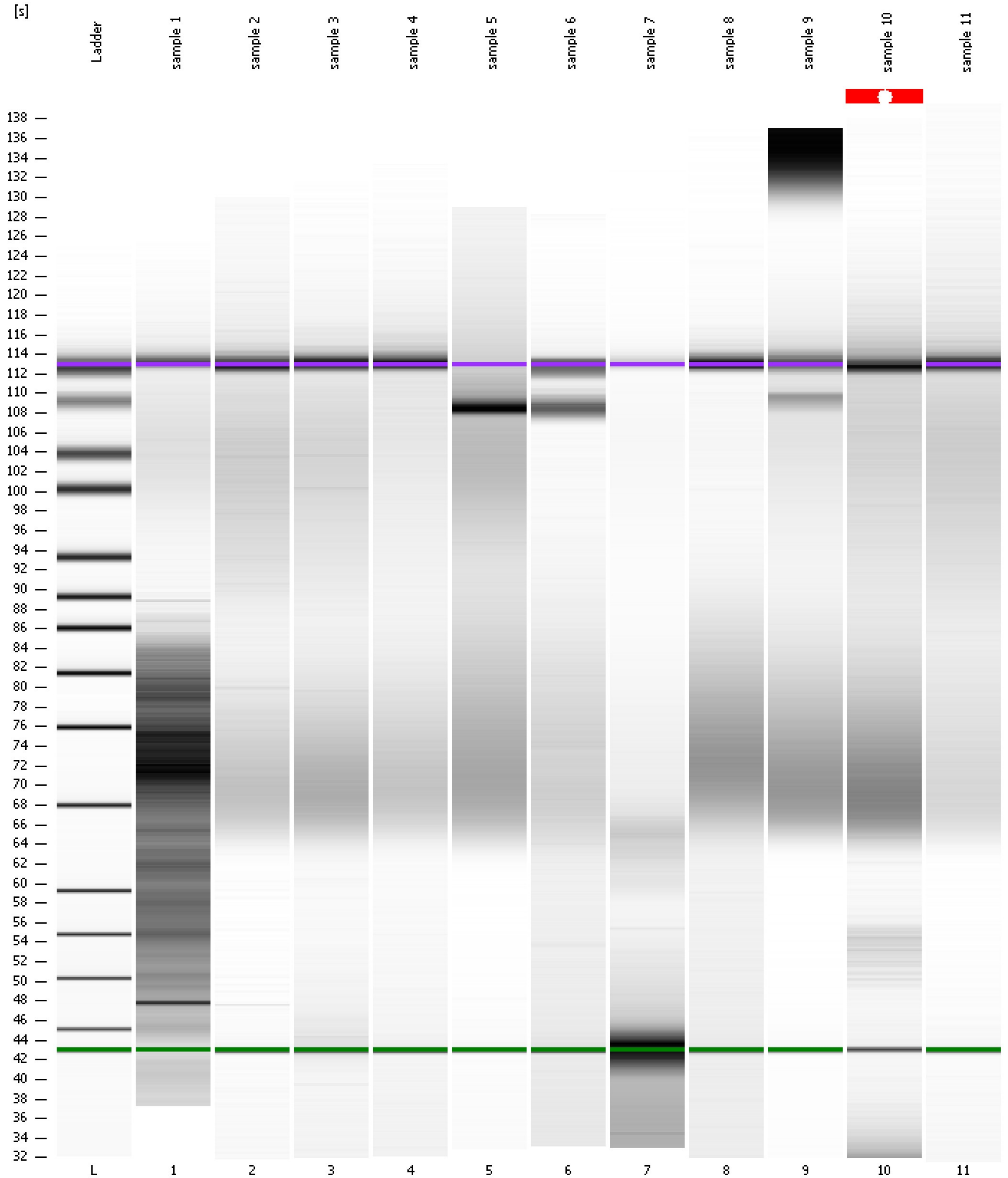
Region table for sample 11 : sample 11

From [bp]	Molarity [pmol/l]	Average Size [bp]	Conc. [pg/μl]	To [bp]	Corr. Area	% of Total	Size distribution in CV [%]	Color
200	1,113.0	473	289.56	1,000	206.9	50	40.4	Blue

Assay Class: High Sensitivity DNA Assay
Data Path: C:\...ents and Settings\Bioanalyzer\2012-04-11\2012-04-11_001.xad

Created: 4/11/2012 9:34:03 AM
Modified: 4/11/2012 10:15:23 AM

Gel Image



Assay Class: High Sensitivity DNA Assay
 Data Path: C:\...ents and Settings\Bioanalyzer\2012-04-11\2012-04-11_001.xad

Created: 4/11/2012 9:34:03 AM
 Modified: 4/11/2012 10:15:23 AM

Run Logbook

Description	Number	Source	Category	Sub Category	Time	Time Zone	User	Host
Run ended on port 1 (Number of wells acquired: 12)		Instrument	Run		4/11/2012 10:15:20 AM	(GMT --07:00) Pacific Standard Time	UC Davis	D8XSMGH1
Run started on port 1 (File: C:\Documents and Settings\Bioanalyzer\2012-04-11\2012-04-11_001.xad)		Instrument	Run		4/11/2012 9:34:08 AM	(GMT --07:00) Pacific Standard Time	UC Davis	D8XSMGH1
Product Number : G2938B		Instrument	Run		4/11/2012 9:34:08 AM	(GMT --07:00) Pacific Standard Time	UC Davis	D8XSMGH1
Name :		Instrument	Run		4/11/2012 9:34:08 AM	(GMT --07:00) Pacific Standard Time	UC Davis	D8XSMGH1
Vendor : Agilent Technologies		Instrument	Run		4/11/2012 9:34:08 AM	(GMT --07:00) Pacific Standard Time	UC Davis	D8XSMGH1
Serial# : DE13701086		Instrument	Run		4/11/2012 9:34:08 AM	(GMT --07:00) Pacific Standard Time	UC Davis	D8XSMGH1
Firmware : C.01.069		Instrument	Run		4/11/2012 9:34:08 AM	(GMT --07:00) Pacific Standard Time	UC Davis	D8XSMGH1
Cartridge : Electrode		Instrument	Run		4/11/2012 9:34:08 AM	(GMT --07:00) Pacific Standard Time	UC Davis	D8XSMGH1