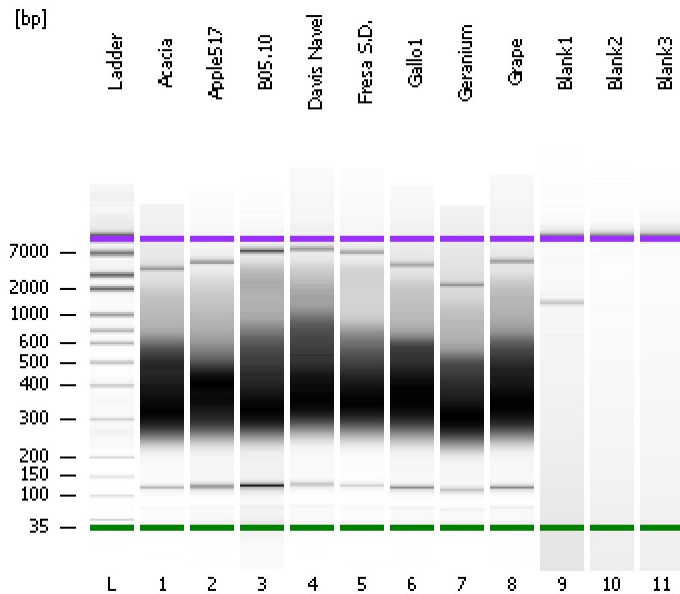


Assay Class: High Sensitivity DNA Assay
Data Path: C:\...ents and Settings\Bioanalyzer\2012-04-11\2012-04-11_006.xad

Created: 4/11/2012 3:24:42 PM
Modified: 4/11/2012 4:03:45 PM

Electrophoresis File Run Summary



Instrument Information:

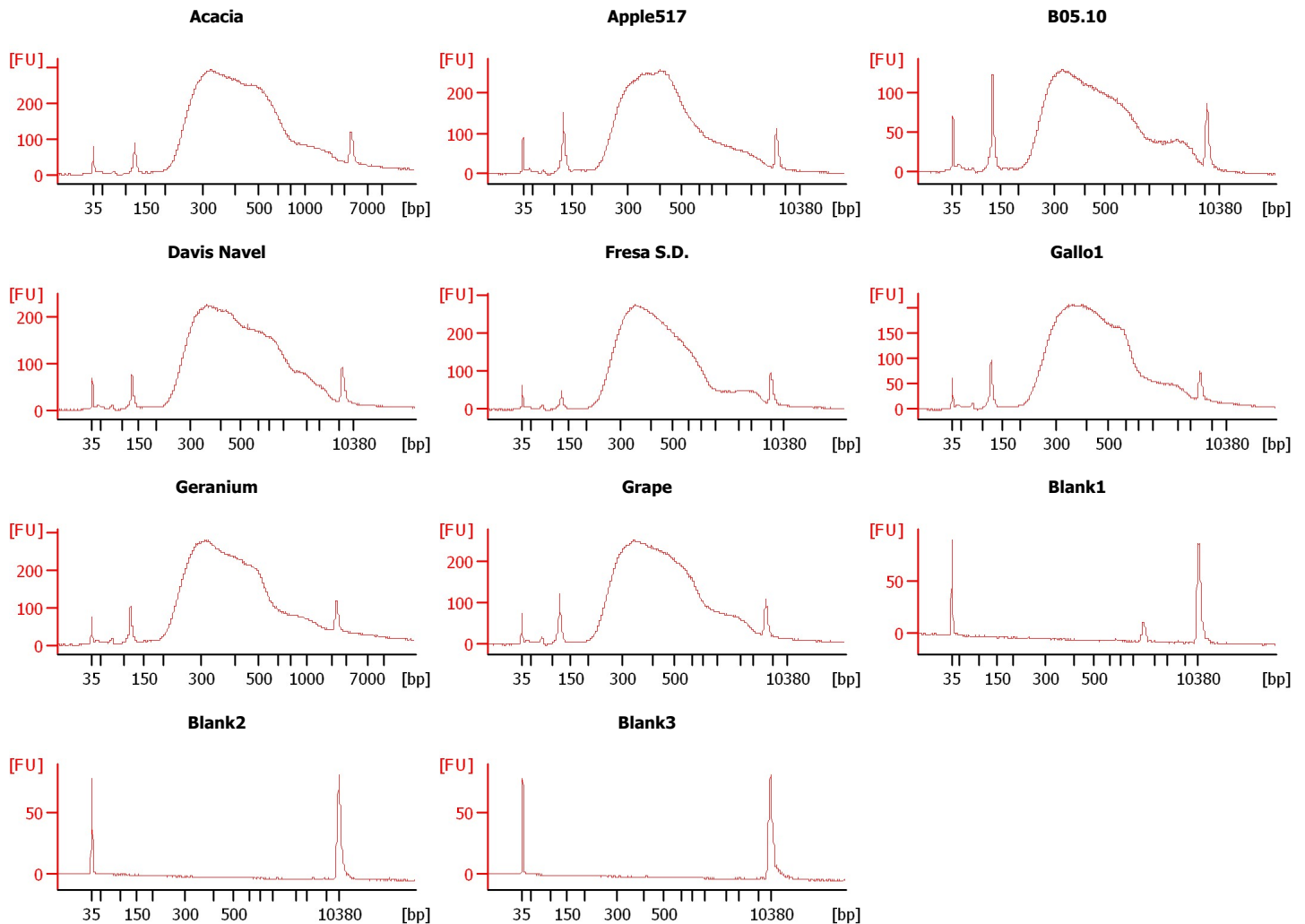
Instrument Name: DE13701086 Firmware: C.01.069
Serial#: DE13701086 Type: G2938B

Assay Information:

Assay Origin Path: C:\Program Files\Agilent\2100 bioanalyzer\2100 expert\assays\dsDNA\High Sensitivity DNA.xsy
Assay Class: High Sensitivity DNA Assay
Version: 1.03
Assay Comments: Copyright © 2003-2010 Agilent Technologies

Chip Information:

Chip Lot #:
Reagent Kit Lot #:
Chip Comments:



Assay Class: High Sensitivity DNA Assay
Data Path: C:\...ents and Settings\Bioanalyzer\2012-04-11\2012-04-11_006.xad

Created: 4/11/2012 3:24:42 PM
Modified: 4/11/2012 4:03:45 PM

Electrophoresis File Run Summary (Chip Summary)

Sample Name	Sample Comment	Rest. Digest	Status	Observation	Result Label	Result Color
Acacia		<input type="checkbox"/>	✓			
Apple517		<input type="checkbox"/>	✓			
B05.10		<input type="checkbox"/>	✓			
Davis Navel		<input type="checkbox"/>	✓			
Fresa S.D.		<input type="checkbox"/>	✓			
Gallo1		<input type="checkbox"/>	✓			
Geranium		<input type="checkbox"/>	✓			
Grape		<input type="checkbox"/>	✓			
Blank1		<input type="checkbox"/>	✓			
Blank2		<input type="checkbox"/>	✓			
Blank3		<input type="checkbox"/>	✓			
Ladder		<input type="checkbox"/>	✓			

Chip Lot #**Reagent Kit Lot #****Chip Comments :**

Assay Class: High Sensitivity DNA Assay
Data Path: C:\...ents and Settings\Bioanalyzer\2012-04-11\2012-04-11_006.xad

Created: 4/11/2012 3:24:42 PM
Modified: 4/11/2012 4:03:45 PM

Electrophoresis Assay Details

General Analysis Settings

Number of Available Sample and Ladder Wells (Max.) : 12
Minimum Visible Range [s] : 32
Maximum Visible Range [s] : 138
Start Analysis Time Range [s] : 33
End Analysis Time Range [s] : 137.5
Ladder Concentration [pg/μl] : 1950
Uses Standard Area for Ladder Fragments
Lower Marker Concentration [pg/μl] : 125
Upper Marker Concentration [pg/μl] : 75
Used Upper Marker for Quantitation
Standard Curve Fit is Point to Point
Show Data Aligned to Lower and Upper Marker

Integrator Settings

Integration Start Time [s] : 33.05
Integration End Time [s] : 137
Slope Threshold : 0.8
Height Threshold [FU] : 5
Area Threshold : 0.1
Width Threshold [s] : 0.6
Baseline Plateau [s] : 0.5

Filter Settings

Filter Width [s] : 0.5
Polynomial Order : 4

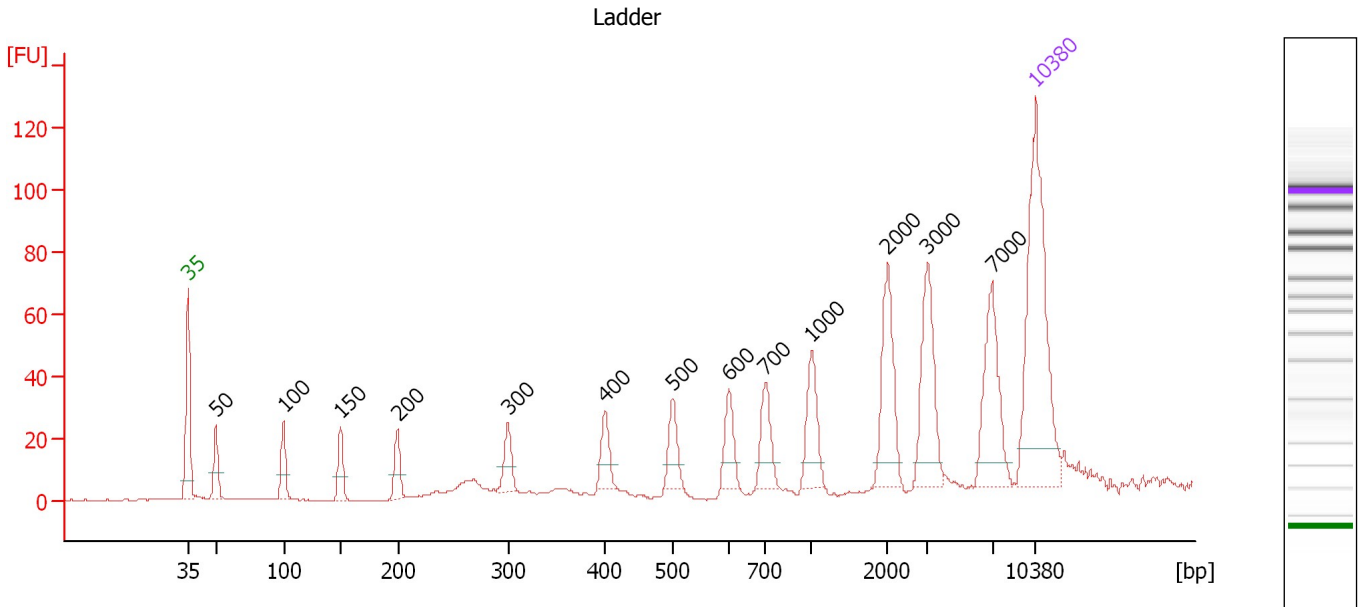
Ladder

Ladder Peak	Size	Area
1	35	160
2	50	210
3	100	208
4	150	221
5	200	242
6	300	270
7	400	305
8	500	306
9	600	336
10	700	321
11	1000	366
12	2000	413
13	3000	411
14	7000	400
15	10380	214

Assay Class: High Sensitivity DNA Assay
 Data Path: C:\...ents and Settings\Bioanalyzer\2012-04-11\2012-04-11_006.xad

Created: 4/11/2012 3:24:42 PM
 Modified: 4/11/2012 4:03:45 PM

Electropherogram Summary



Overall Results for Ladder

Noise: 0.2

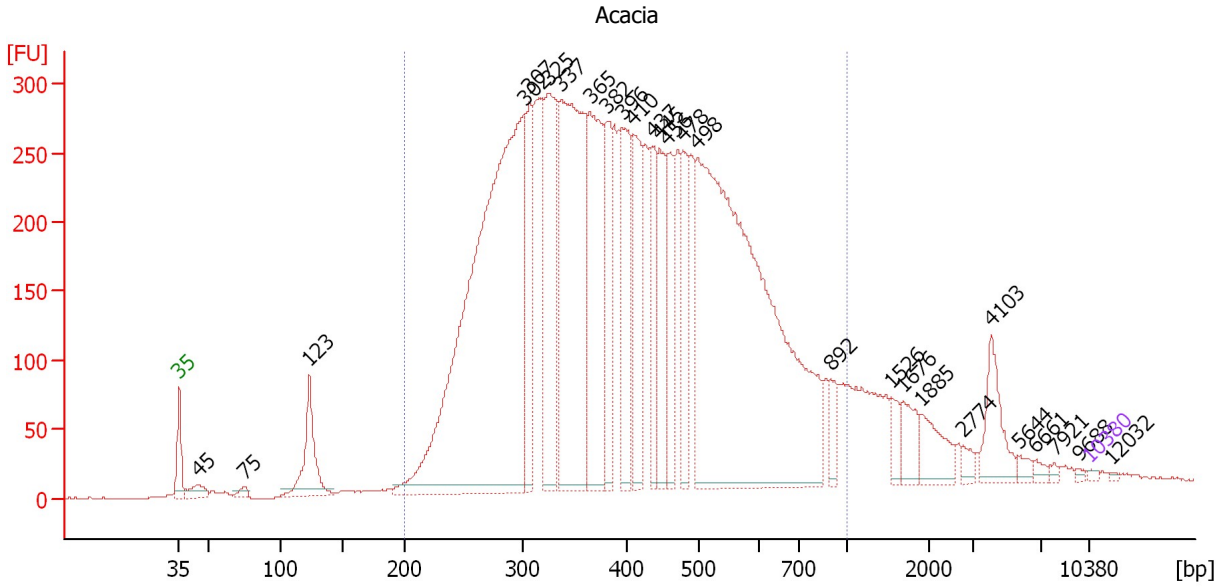
Peak table for Ladder

Peak	Size [bp]	Conc. [pg/μl]	Molarity [pmol/l]	Observations
1	35	125.00	5,411.3	Lower Marker
2	50	150.00	4,545.5	Ladder Peak
3	100	150.00	2,272.7	Ladder Peak
4	150	150.00	1,515.2	Ladder Peak
5	200	150.00	1,136.4	Ladder Peak
6	300	150.00	757.6	Ladder Peak
7	400	150.00	568.2	Ladder Peak
8	500	150.00	454.5	Ladder Peak
9	600	150.00	378.8	Ladder Peak
10	700	150.00	324.7	Ladder Peak
11	1,000	150.00	227.3	Ladder Peak
12	2,000	150.00	113.6	Ladder Peak
13	3,000	150.00	75.8	Ladder Peak
14	7,000	150.00	32.5	Ladder Peak
15	10,380	75.00	10.9	Upper Marker

Assay Class: High Sensitivity DNA Assay
 Data Path: C:\...ents and Settings\Bioanalyzer\2012-04-11\2012-04-11_006.xad

Created: 4/11/2012 3:24:42 PM
 Modified: 4/11/2012 4:03:45 PM

Electropherogram Summary Continued ...



Overall Results for sample 1 : Acacia

Number of peaks found: 27 Corr. Area 1: 9,321.3
 Noise: 0.4

Peak table for sample 1 : Acacia

Peak	Size [bp]	Conc. [pg/μl]	Molarity [pmol/l]	Observations
1	35	125.00	5,411.3	Lower Marker
2	45	799.90	26,803.7	
3	75	311.99	6,331.6	
4	123	3,478.92	42,986.8	
5	302	34,842.40	175,007.8	
6	307	4,275.98	21,119.0	
7	325	8,085.51	37,729.9	
8	337	15,229.69	68,371.5	
9	365	8,183.40	33,956.0	
10	382	3,875.64	15,390.8	
11	396	4,595.26	17,587.6	
12	410	4,409.03	16,313.3	
13	437	2,932.92	10,176.9	
14	445	3,289.68	11,189.2	
15	456	3,239.53	10,752.9	
16	478	2,795.35	8,865.2	
17	498	29,886.98	91,009.6	
18	892	803.99	1,366.0	
19	1,526	613.76	609.4	
20	1,676	1,036.57	937.1	
21	1,885	1,288.13	1,035.7	
22	2,774	286.35	156.4	
23	4,103	1,629.36	601.6	
24	5,644	236.24	63.4	
25	6,661	171.69	39.1	
26	7,921	103.10	19.7	

Assay Class: High Sensitivity DNA Assay
Data Path: C:\...ents and Settings\Bioanalyzer\2012-04-11\2012-04-11_006.xad


Created: 4/11/2012 3:24:42 PM
Modified: 4/11/2012 4:03:45 PM

Electropherogram Summary Continued ...

... Peak table for sample 1 : Acacia

Peak	Size [bp]	Conc. [pg/µl]	Molarity [pmol/l]	Observations
27	9,688	70.77	11.1	
28	10,380	75.00	10.9	Upper Marker
29	12,032	0.00	0.0	

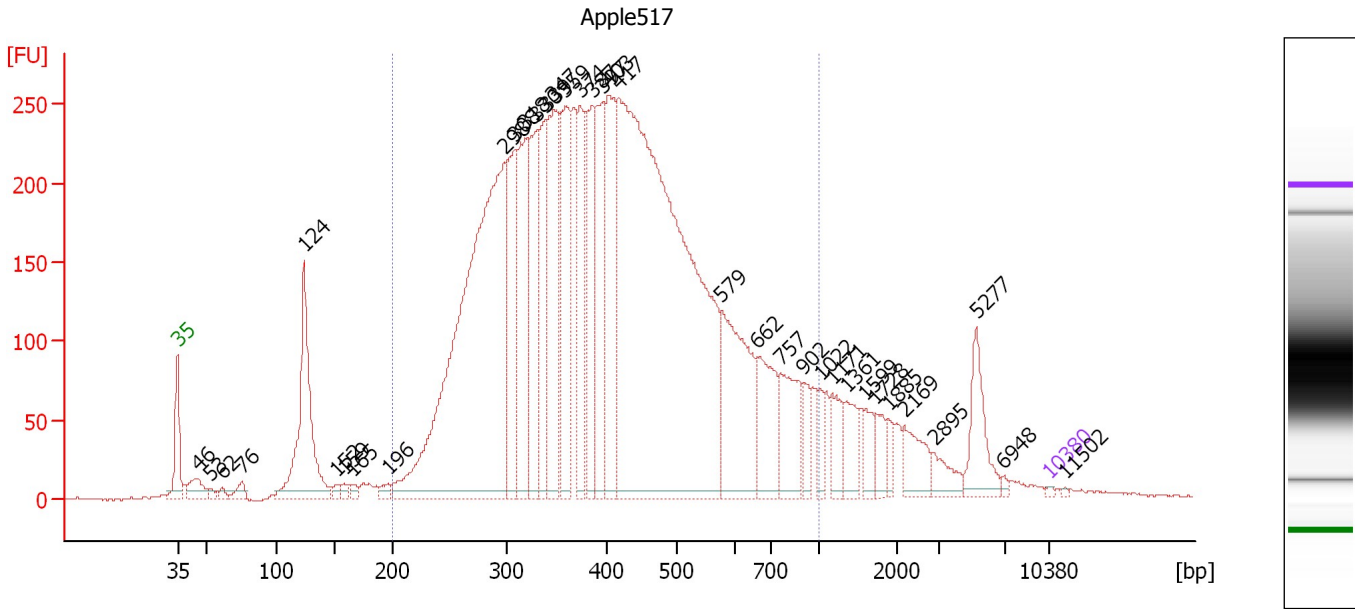
Region table for sample 1 : Acacia

From [bp]	Molarity [pmol/l]	Average Size [bp]	Conc. [pg/µl]	To [bp]	Corr. Area	% of Total	Size distribution in CV [%]	Color
200	593,758.2	425	144,362.34	1,000	9,321.3	90	34.0	

Assay Class: High Sensitivity DNA Assay
 Data Path: C:\...ents and Settings\Bioanalyzer\2012-04-11\2012-04-11_006.xad

Created: 4/11/2012 3:24:42 PM
 Modified: 4/11/2012 4:03:45 PM

Electropherogram Summary Continued ...



Overall Results for sample 2 : Apple517

Number of peaks found: 36 Corr. Area 1: 7,498.7
 Noise: 0.8

Peak table for sample 2 : Apple517

Peak	Size [bp]	Conc. [pg/μl]	Molarity [pmol/l]	Observations
1	35	125.00	5,411.3	Lower Marker
2	46	1,499.91	49,779.2	
3	53	252.42	7,182.1	
4	62	318.95	7,836.5	
5	76	676.64	13,452.7	
6	124	10,253.42	124,840.0	
7	152	310.57	3,092.8	
8	159	347.43	3,321.1	
9	165	281.42	2,579.2	
10	196	417.52	3,224.3	
11	298	35,523.26	180,642.5	
12	308	7,552.69	37,176.0	
13	318	7,240.56	34,444.5	
14	330	6,837.91	31,371.9	
15	339	5,418.99	24,196.9	
16	347	8,756.41	38,256.2	
17	359	7,536.14	31,846.1	
18	374	4,849.74	19,645.4	
19	387	4,719.11	18,483.0	
20	397	6,316.93	24,108.8	
21	403	7,020.69	26,372.7	
22	417	48,059.84	174,571.4	
23	579	7,329.74	19,194.8	
24	662	3,545.95	8,111.3	
25	757	3,406.64	6,822.9	
26	902	1,012.89	1,700.9	

Assay Class: High Sensitivity DNA Assay
 Data Path: C:\...ents and Settings\Bioanalyzer\2012-04-11\2012-04-11_006.xad


Created: 4/11/2012 3:24:42 PM
 Modified: 4/11/2012 4:03:45 PM

Electropherogram Summary Continued ...

... Peak table for sample 2 : Apple517

Peak	Size [bp]	Conc. [pg/µl]	Molarity [pmol/l]	Observations
27	1,022	784.04	1,162.8	
28	1,171	1,357.96	1,756.9	
29	1,361	1,416.19	1,576.1	
30	1,599	950.72	900.7	
31	1,728	800.14	701.4	
32	1,885	514.35	413.5	
33	2,169	1,510.81	1,055.4	
34	2,895	871.23	456.0	
35	5,277	2,223.49	638.4	
36	6,948	128.49	28.0	
37	10,380	75.00	10.9	Upper Marker
38	11,502	0.00	0.0	

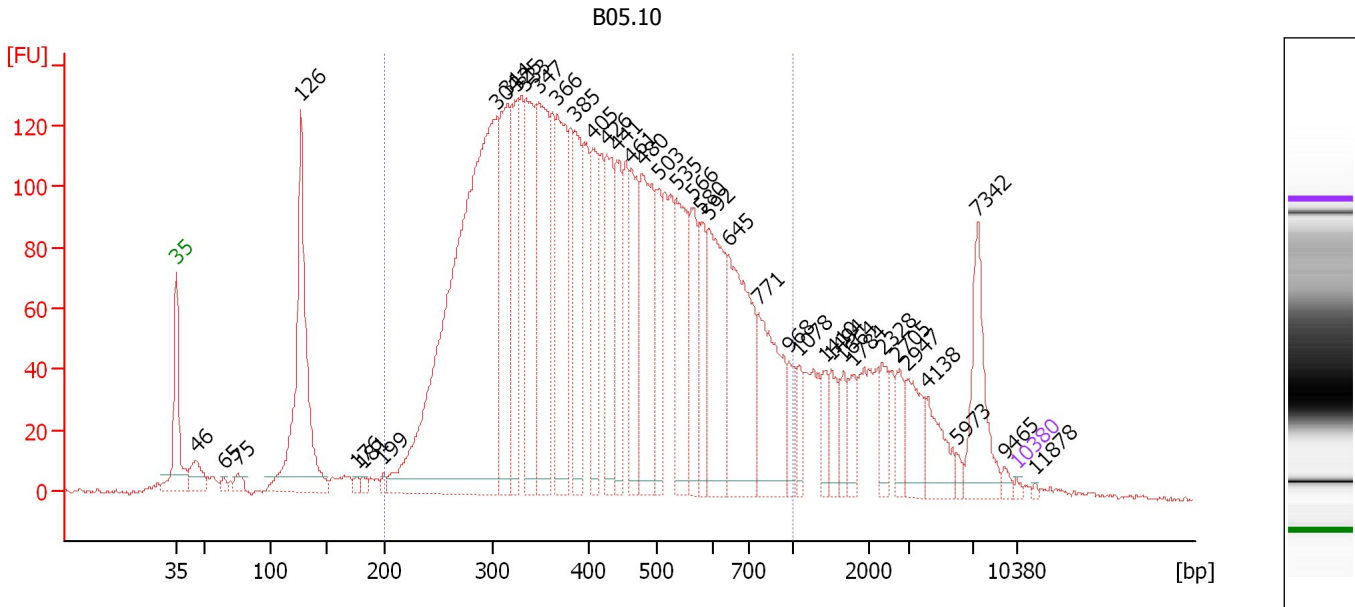
Region table for sample 2 : Apple517

From [bp]	Molarity [pmol/l]	Average Size [bp]	Conc. [pg/µl]	To [bp]	Corr. Area	% of Total	Size distribution in CV [%]	Color
200	698,187.1	425	171,293.14	1,000	7,498.7	86	34.0	

Assay Class: High Sensitivity DNA Assay
 Data Path: C:\...ents and Settings\Bioanalyzer\2012-04-11\2012-04-11_006.xad

Created: 4/11/2012 3:24:42 PM
 Modified: 4/11/2012 4:03:45 PM

Electropherogram Summary Continued ...



Overall Results for sample 3 : B05.10

Number of peaks found: 40 Corr. Area 1: 4,136.8
 Noise: 0.9

Peak table for sample 3 : B05.10

Peak	Size [bp]	Conc. [pg/μl]	Molarity [pmol/l]	Observations
1	35	125.00	5,411.3	Lower Marker
2	46	1,144.61	37,886.7	
3	65	225.92	5,242.2	
4	75	401.82	8,092.3	
5	126	9,360.68	112,321.0	
6	176	177.21	1,527.2	
7	181	201.53	1,687.1	
8	199	184.31	1,400.6	
9	304	24,793.53	123,696.5	
10	314	5,630.01	27,146.4	
11	325	3,395.76	15,815.1	
12	333	5,000.02	22,743.8	
13	347	6,132.31	26,779.4	
14	366	5,010.36	20,720.5	
15	385	3,468.58	13,661.9	
16	405	3,020.63	11,298.6	
17	426	3,245.54	11,550.5	
18	441	2,485.90	8,543.9	
19	461	2,692.46	8,854.7	
20	480	4,574.21	14,445.1	
21	503	2,034.23	6,122.6	
22	535	3,157.88	8,946.1	
23	566	2,198.04	5,881.3	
24	580	1,727.67	4,516.4	
25	592	3,716.21	9,511.6	
26	645	4,766.74	11,190.6	

Assay Class: High Sensitivity DNA Assay
 Data Path: C:\...ents and Settings\Bioanalyzer\2012-04-11\2012-04-11_006.xad


Created: 4/11/2012 3:24:42 PM
 Modified: 4/11/2012 4:03:45 PM

Electropherogram Summary Continued ...

... Peak table for sample 3 : B05.10

Peak	Size [bp]	Conc. [pg/µl]	Molarity [pmol/l]	Observations
27	771	3,566.92	7,007.8	
28	968	705.55	1,103.9	
29	1,078	621.23	873.3	
30	1,410	604.83	650.1	
31	1,494	732.18	742.4	
32	1,664	517.85	471.6	
33	1,784	578.42	491.3	
34	2,328	671.36	436.9	
35	2,705	594.91	333.2	
36	2,947	1,142.09	587.1	
37	4,138	1,085.80	397.6	
38	5,973	164.70	41.8	
39	7,342	2,105.17	434.4	
40	9,465	146.67	23.5	
41	10,380	75.00	10.9	Upper Marker
42	11,878	0.00	0.0	

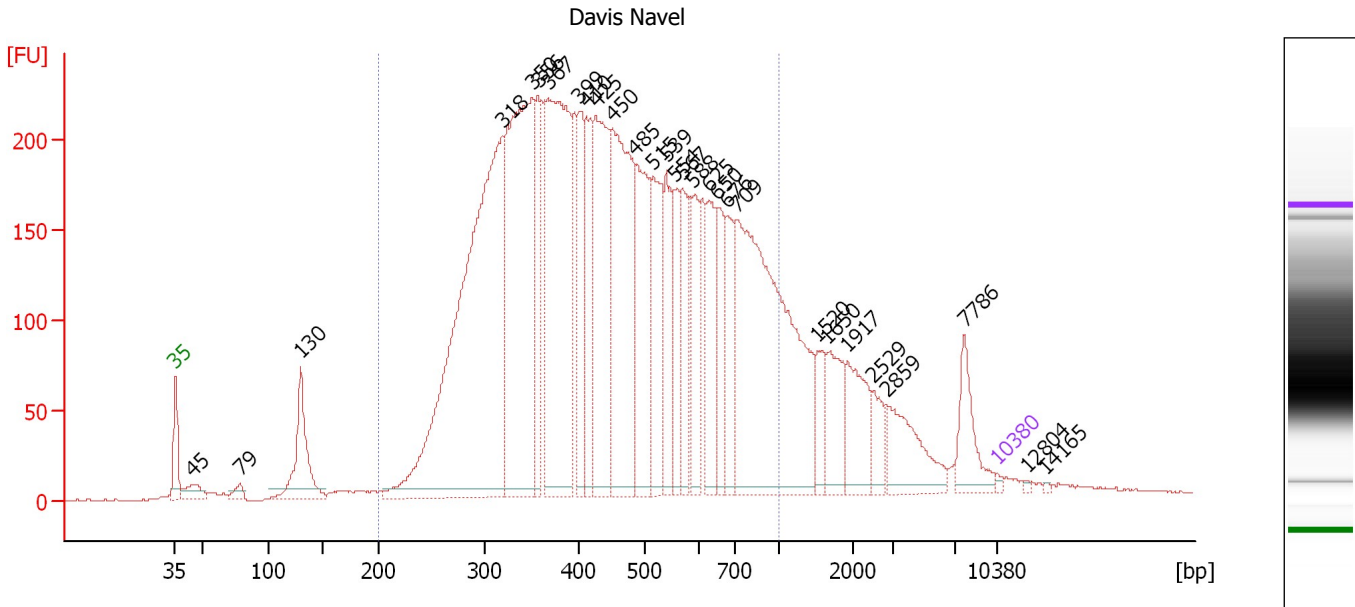
Region table for sample 3 : B05.10

From [bp]	Molarity [pmol/l]	Average Size [bp]	Conc. [pg/µl]	To [bp]	Corr. Area	% of Total	Size distribution in CV [%]	Color
200	442,511.7	441	110,370.10	1,000	4,136.8	80	35.5	

Assay Class: High Sensitivity DNA Assay
 Data Path: C:\...ents and Settings\Bioanalyzer\2012-04-11\2012-04-11_006.xad

Created: 4/11/2012 3:24:42 PM
 Modified: 4/11/2012 4:03:45 PM

Electropherogram Summary Continued ...



Overall Results for sample 4 : Davis Navel

Number of peaks found: 29 Corr. Area 1: 6,926.6
 Noise: 0.7

Peak table for sample 4 : Davis Navel

Peak	Size [bp]	Conc. [pg/μl]	Molarity [pmol/l]	Observations
1	35	125.00	5,411.3	Lower Marker
2	45	971.24	32,615.0	
3	79	451.94	8,658.3	
4	130	3,972.13	46,416.5	
5	318	26,673.29	126,920.7	
6	350	15,541.45	67,355.9	
7	356	3,672.64	15,638.1	
8	367	14,119.97	58,266.2	
9	399	3,446.62	13,072.0	
10	410	3,366.18	12,444.8	
11	425	7,751.30	27,616.5	
12	450	9,961.02	33,565.6	
13	485	5,835.57	18,215.9	
14	515	4,195.64	12,353.0	
15	539	3,123.06	8,779.9	
16	554	2,175.40	5,954.4	
17	567	2,600.32	6,946.5	
18	588	2,479.17	6,392.4	
19	625	2,842.29	6,893.7	
20	650	2,627.35	6,119.7	
21	676	2,287.23	5,124.3	
22	709	15,964.29	34,137.7	
23	1,520	1,117.18	1,113.8	
24	1,650	1,893.43	1,739.1	
25	1,917	2,169.65	1,715.3	
26	2,529	817.77	490.0	


Assay Class: High Sensitivity DNA Assay
Data Path: C:\...ents and Settings\Bioanalyzer\2012-04-11\2012-04-11_006.xad

Created: 4/11/2012 3:24:42 PM
Modified: 4/11/2012 4:03:45 PM

Electropherogram Summary Continued ...**... Peak table for sample 4 : Davis Navel**

Peak	Size [bp]	Conc. [pg/μl]	Molarity [pmol/l]	Observations
27	2,859	2,293.05	1,215.3	
28	7,786	1,598.15	311.0	
29	10,380	75.00	10.9	Upper Marker
30	12,804	0.00	0.0	
31	14,165	0.00	0.0	

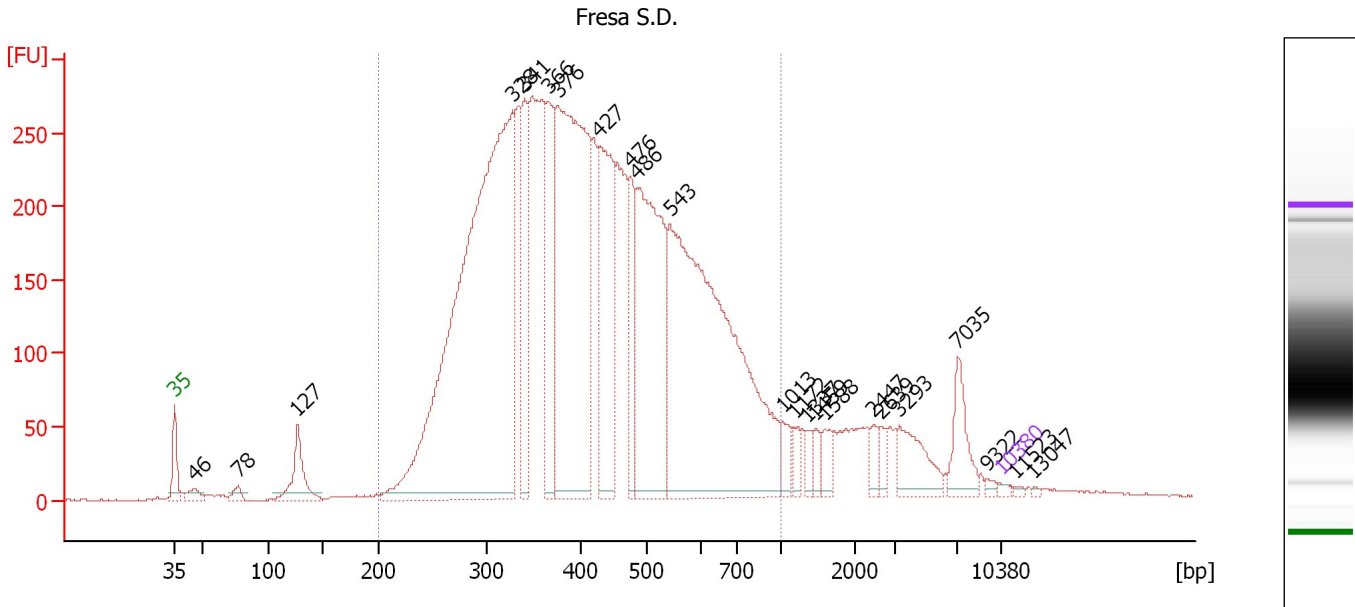
Region table for sample 4 : Davis Navel

From [bp]	Molarity [pmol/l]	Average Size [bp]	Conc. [pg/μl]	To [bp]	Corr. Area	% of Total	Size distribution in CV [%]	Color
200	493,185.9	471	131,321.41	1,000	6,926.6	84	35.4	

Assay Class: High Sensitivity DNA Assay
 Data Path: C:\...ents and Settings\Bioanalyzer\2012-04-11\2012-04-11_006.xad

Created: 4/11/2012 3:24:42 PM
 Modified: 4/11/2012 4:03:45 PM

Electropherogram Summary Continued ...



Overall Results for sample 5 : Fresa S.D.

Number of peaks found: 23 Corr. Area 1: 7,763.9
 Noise: 0.5

Peak table for sample 5 : Fresa S.D.

Peak	Size [bp]	Conc. [pg/μl]	Molarity [pmol/l]	Observations
1	35	125.00	5,411.3	Lower Marker
2	46	482.26	16,000.6	
3	78	339.34	6,621.4	
4	127	1,770.14	21,160.4	
5	328	26,138.31	120,901.4	
6	341	3,402.78	15,139.5	
7	366	4,034.50	16,704.4	
8	376	13,497.36	54,374.8	
9	427	5,381.19	19,084.6	
10	476	1,927.70	6,139.3	
11	486	8,009.41	24,956.7	
12	543	16,306.50	45,530.2	
13	1,013	464.19	693.9	
14	1,172	340.12	439.9	
15	1,337	295.06	334.4	
16	1,459	308.19	320.1	
17	1,588	441.60	421.3	
18	2,447	348.31	215.6	
19	2,639	282.19	162.0	
20	3,293	1,133.91	521.7	
21	7,035	1,047.12	225.5	
22	9,322	93.25	15.2	
23	10,380	75.00	10.9	Upper Marker
24	11,523	0.00	0.0	
25	13,047	0.00	0.0	

Assay Class: High Sensitivity DNA Assay
Data Path: C:\...ents and Settings\Bioanalyzer\2012-04-11\2012-04-11_006.xad

Created: 4/11/2012 3:24:42 PM
Modified: 4/11/2012 4:03:45 PM

Electropherogram Summary Continued ...

... Region table for sample 5 :

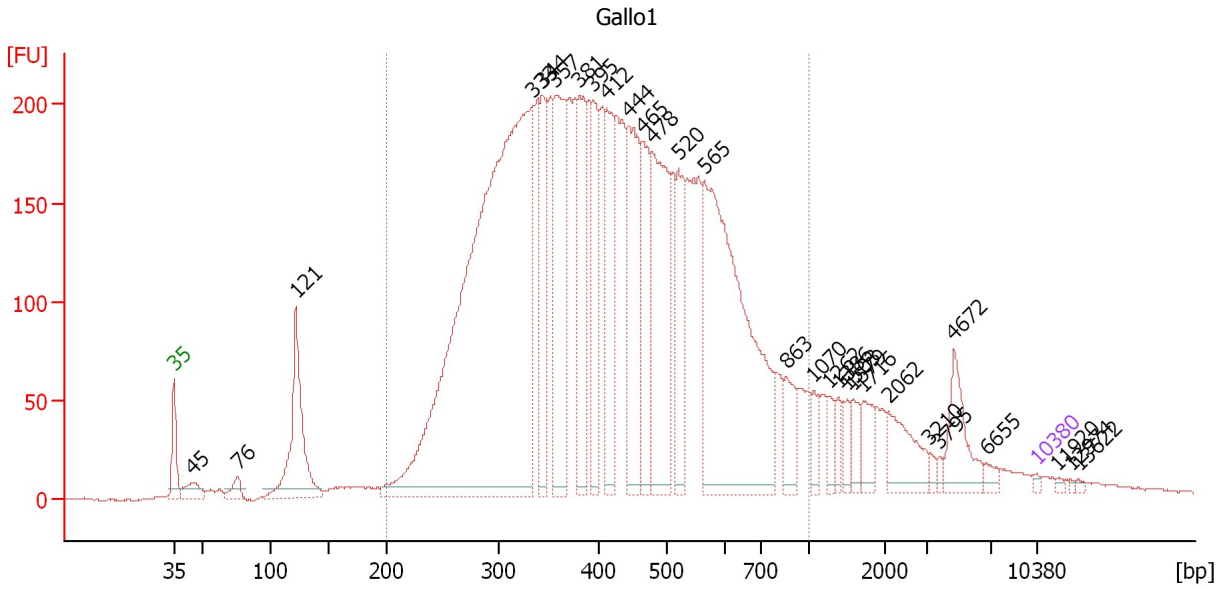
Fresa S.D.

From [bp]	Molarity [pmol/l]	Average Size [bp]	Conc. [pg/μl]	To [bp]	Corr. Area	% of Total	Size distribution in CV [%]	Color
200	373,139.5	435	94,336.98	1,000	7,763.9	89	32.4	■

Assay Class: High Sensitivity DNA Assay
 Data Path: C:\...ents and Settings\Bioanalyzer\2012-04-11\2012-04-11_006.xad

Created: 4/11/2012 3:24:42 PM
 Modified: 4/11/2012 4:03:45 PM

Electropherogram Summary Continued ...



Overall Results for sample 6 : Gallo1

Number of peaks found: 29 Corr. Area 1: 6,373.8
 Noise: 0.6

Peak table for sample 6 : Gallo1

Peak	Size [bp]	Conc. [pg/μl]	Molarity [pmol/l]	Observations
1	35	125.00	5,411.3	Lower Marker
2	45	1,007.55	33,765.9	
3	76	645.61	12,873.9	
4	121	5,965.35	74,624.6	
5	333	39,489.29	179,463.4	
6	344	4,203.00	18,530.4	
7	357	6,798.15	28,882.3	
8	381	4,355.46	17,323.4	
9	395	3,666.11	14,063.0	
10	412	3,981.31	14,635.3	
11	444	5,616.33	19,169.3	
12	465	3,884.61	12,662.4	
13	478	6,730.36	21,334.4	
14	520	3,345.86	9,748.9	
15	565	14,986.71	40,223.0	
16	863	1,247.92	2,190.2	
17	1,070	655.34	928.2	
18	1,262	567.51	681.2	
19	1,386	469.50	513.2	
20	1,503	453.41	457.1	
21	1,579	649.04	622.9	
22	1,716	873.18	770.9	
23	2,062	1,616.84	1,188.1	
24	3,210	175.24	82.7	
25	3,795	152.41	60.9	
26	4,672	1,640.55	532.0	

Assay Class: High Sensitivity DNA Assay
 Data Path: C:\...ents and Settings\Bioanalyzer\2012-04-11\2012-04-11_006.xad


Created: 4/11/2012 3:24:42 PM
 Modified: 4/11/2012 4:03:45 PM

Electropherogram Summary Continued ...

... Peak table for sample 6 : Gallo1

Peak	Size [bp]	Conc. [pg/μl]	Molarity [pmol/l]	Observations
27	6,655	259.60	59.1	
28	10,380	75.00	10.9	Upper Marker
29	11,920	0.00	0.0	
30	12,974	0.00	0.0	
31	13,622	0.00	0.0	

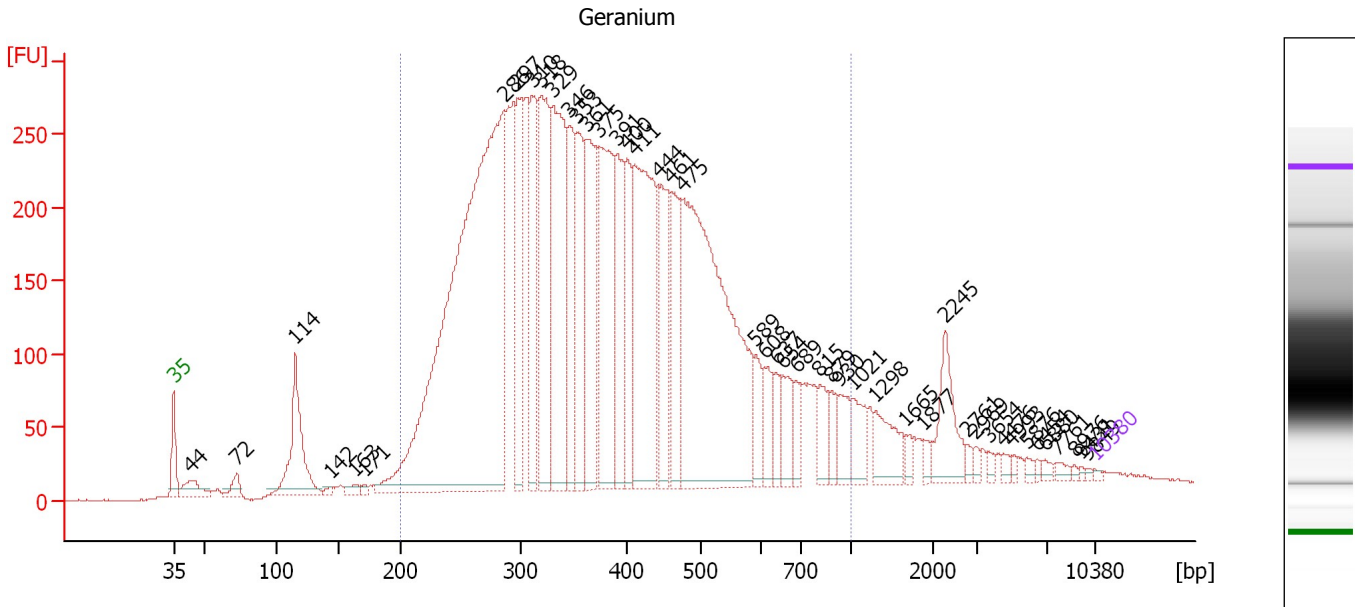
Region table for sample 6 : Gallo1

From [bp]	Molarity [pmol/l]	Average Size [bp]	Conc. [pg/μl]	To [bp]	Corr. Area	% of Total	Size distribution in CV [%]	Color
200	526,157.8	436	132,205.69	1,000	6,373.8	87	33.0	

Assay Class: High Sensitivity DNA Assay
 Data Path: C:\...ents and Settings\Bioanalyzer\2012-04-11\2012-04-11_006.xad

Created: 4/11/2012 3:24:42 PM
 Modified: 4/11/2012 4:03:45 PM

Electropherogram Summary Continued ...



Overall Results for sample 7 : Geranium

Number of peaks found: 46 Corr. Area 1: 8,631.5
 Noise: 0.6

Peak table for sample 7 : Geranium

Peak	Size [bp]	Conc. [pg/μl]	Molarity [pmol/l]	Observations
1	35	125.00	5,411.3	Lower Marker
2	44	1,638.48	56,725.5	
3	72	847.05	17,751.3	
4	114	6,344.94	84,001.1	
5	142	200.69	2,135.2	
6	163	361.41	3,358.2	
7	171	173.33	1,537.6	
8	286	48,282.08	255,873.4	
9	297	6,531.90	33,320.3	
10	310	6,332.77	30,925.0	
11	318	9,452.74	44,987.3	
12	329	12,284.08	56,487.5	
13	346	4,978.37	21,820.7	
14	353	6,153.95	26,394.0	
15	361	7,225.85	30,297.2	
16	375	9,318.20	37,698.1	
17	391	5,253.05	20,345.1	
18	400	3,947.53	14,936.0	
19	411	12,424.76	45,848.6	
20	444	5,242.82	17,893.3	
21	461	4,560.15	14,976.5	
22	475	23,424.14	74,699.5	
23	589	1,494.73	3,843.9	
24	608	1,680.78	4,191.9	
25	637	999.90	2,377.3	
26	654	1,705.68	3,954.4	

Assay Class: High Sensitivity DNA Assay
 Data Path: C:\...ents and Settings\Bioanalyzer\2012-04-11\2012-04-11_006.xad

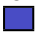
Created: 4/11/2012 3:24:42 PM
 Modified: 4/11/2012 4:03:45 PM

Electropherogram Summary Continued ...

... Peak table for sample 7 : Geranium

Peak	Size [bp]	Conc. [pg/µl]	Molarity [pmol/l]	Observations
27	689	1,000.93	2,201.9	
28	815	1,316.63	2,448.9	
29	879	975.17	1,681.2	
30	930	1,285.31	2,093.5	
31	1,021	1,453.00	2,156.0	
32	1,298	1,818.70	2,123.1	
33	1,665	318.07	289.5	
34	1,877	334.82	270.2	
35	2,245	2,350.88	1,586.7	
36	2,761	240.82	132.2	
37	2,969	209.10	106.7	
38	3,654	232.64	96.5	
39	4,476	223.36	75.6	
40	4,993	153.27	46.5	
41	5,876	196.43	50.7	
42	6,454	135.77	31.9	
43	6,880	203.37	44.8	
44	7,761	226.00	44.1	
45	8,976	89.18	15.1	
46	9,431	73.75	11.8	
47	9,849	70.38	10.8	
48	10,380	75.00	10.9	Upper Marker

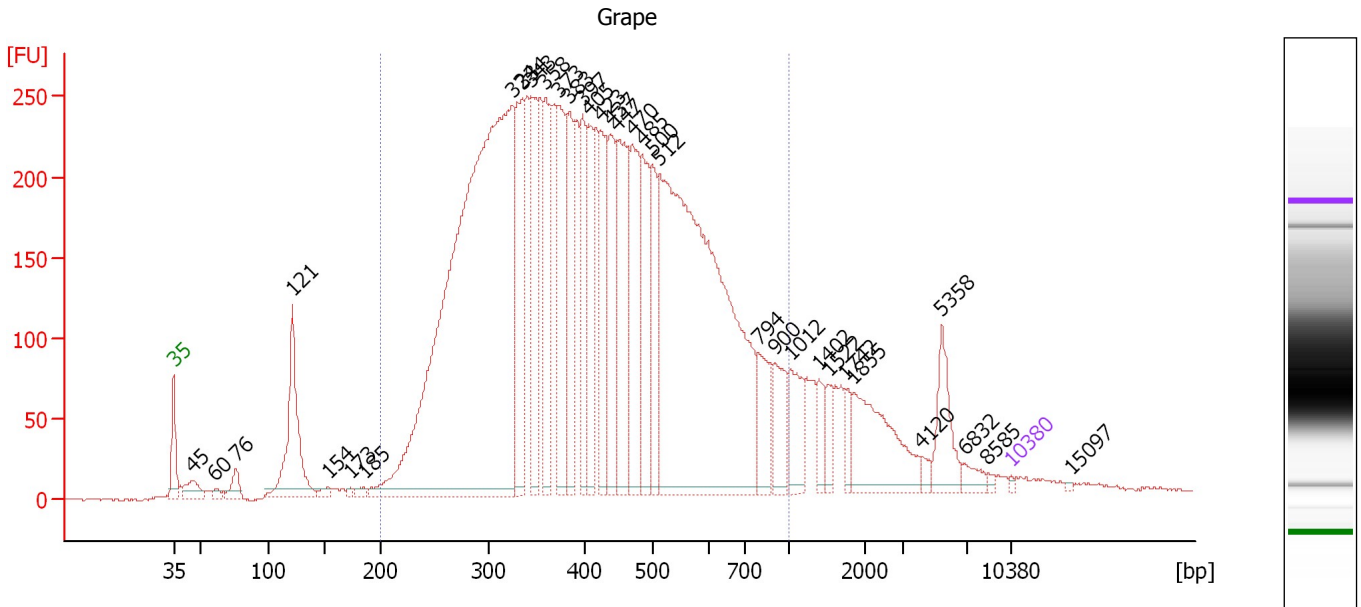
Region table for sample 7 : Geranium

From [bp]	Molarity [pmol/l]	Average Size [bp]	Conc. [pg/µl]	To [bp]	Corr. Area	% of Total	Size distribution in CV [%]	Color
200	860,750.7	401	196,835.30	1,000	8,631.5	89	35.7	

Assay Class: High Sensitivity DNA Assay
 Data Path: C:\...ents and Settings\Bioanalyzer\2012-04-11\2012-04-11_006.xad

Created: 4/11/2012 3:24:42 PM
 Modified: 4/11/2012 4:03:45 PM

Electropherogram Summary Continued ...



Overall Results for sample 8 : Grape

Number of peaks found: 34 Corr. Area 1: 7,891.0
 Noise: 0.7

Peak table for sample 8 : Grape

Peak	Size [bp]	Conc. [pg/μl]	Molarity [pmol/l]	Observations
1	35	125.00	5,411.3	Lower Marker
2	45	1,168.88	39,160.6	
3	60	272.36	6,851.6	
4	76	943.44	18,764.7	
5	121	6,918.79	86,340.4	
6	154	360.47	3,555.8	
7	173	162.73	1,425.2	
8	185	317.05	2,592.4	
9	324	50,620.30	236,551.0	
10	334	6,266.28	28,405.1	
11	343	5,837.48	25,774.8	
12	358	4,880.34	20,644.8	
13	373	5,943.02	24,164.1	
14	383	4,433.26	17,528.1	
15	397	3,933.93	15,009.0	
16	405	3,835.02	14,359.5	
17	423	3,988.72	14,287.4	
18	437	4,735.09	16,434.2	
19	447	6,795.52	23,038.3	
20	470	5,242.86	16,899.9	
21	485	4,522.96	14,124.1	
22	500	3,135.00	9,492.1	
23	512	32,417.11	95,953.8	
24	794	2,153.43	4,109.0	
25	900	1,950.13	3,282.9	
26	1,012	1,934.02	2,895.4	

Assay Class: High Sensitivity DNA Assay
 Data Path: C:\...ents and Settings\Bioanalyzer\2012-04-11\2012-04-11_006.xad


Created: 4/11/2012 3:24:42 PM
 Modified: 4/11/2012 4:03:45 PM

Electropherogram Summary Continued ...

... Peak table for sample 8 : Grape

Peak	Size [bp]	Conc. [pg/µl]	Molarity [pmol/l]	Observations
27	1,402	994.60	1,075.2	
28	1,522	739.66	736.3	
29	1,742	673.02	585.5	
30	1,855	4,051.37	3,309.4	
31	4,120	308.99	113.6	
32	5,358	1,962.74	555.0	
33	6,832	470.16	104.3	
34	8,585	117.44	20.7	
35	10,380	75.00	10.9	Upper Marker
36	15,097	0.00	0.0	

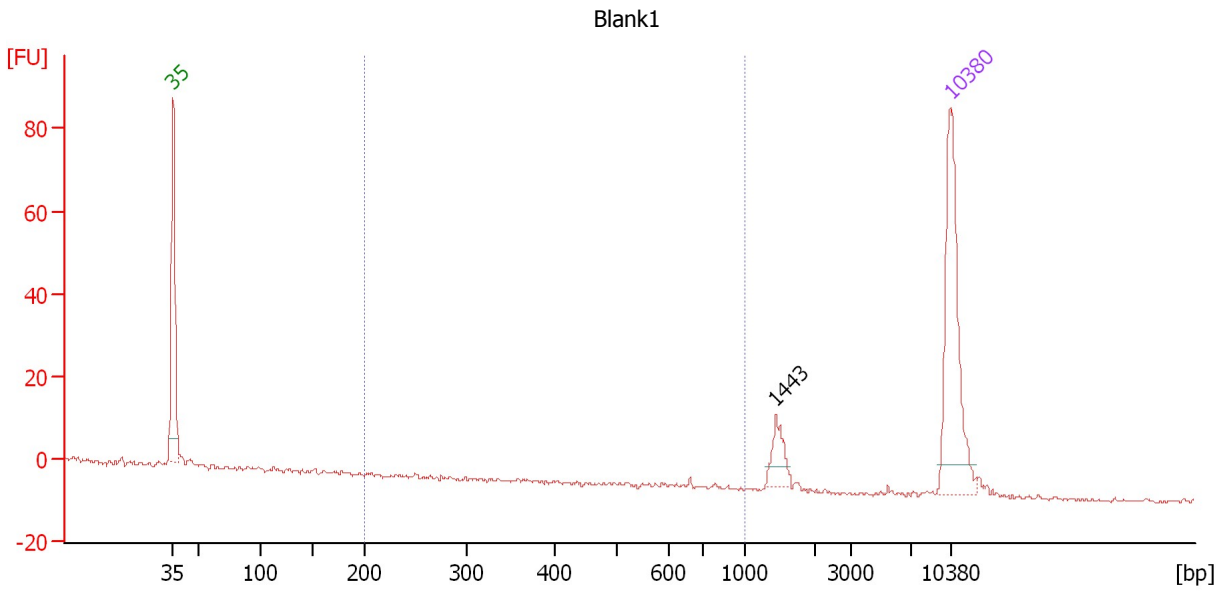
Region table for sample 8 : Grape

From [bp]	Molarity [pmol/l]	Average Size [bp]	Conc. [pg/µl]	To [bp]	Corr. Area	% of Total	Size distribution in CV [%]	Color
200	691,520.8	435	171,652.27	1,000	7,891.0	86	34.4	

Assay Class: High Sensitivity DNA Assay
 Data Path: C:\...ents and Settings\Bioanalyzer\2012-04-11\2012-04-11_006.xad

Created: 4/11/2012 3:24:42 PM
 Modified: 4/11/2012 4:03:45 PM

Electropherogram Summary Continued ...



Overall Results for sample 9 : Blank1

Number of peaks found: 1 Corr. Area 1: 0.2
 Noise: 0.5

Peak table for sample 9 : Blank1

Peak	Size [bp]	Conc. [pg/μl]	Molarity [pmol/l]	Observations
1	35	125.00	5,411.3	Lower Marker
2	1,443	15.97	16.8	
3	10,380	75.00	10.9	Upper Marker

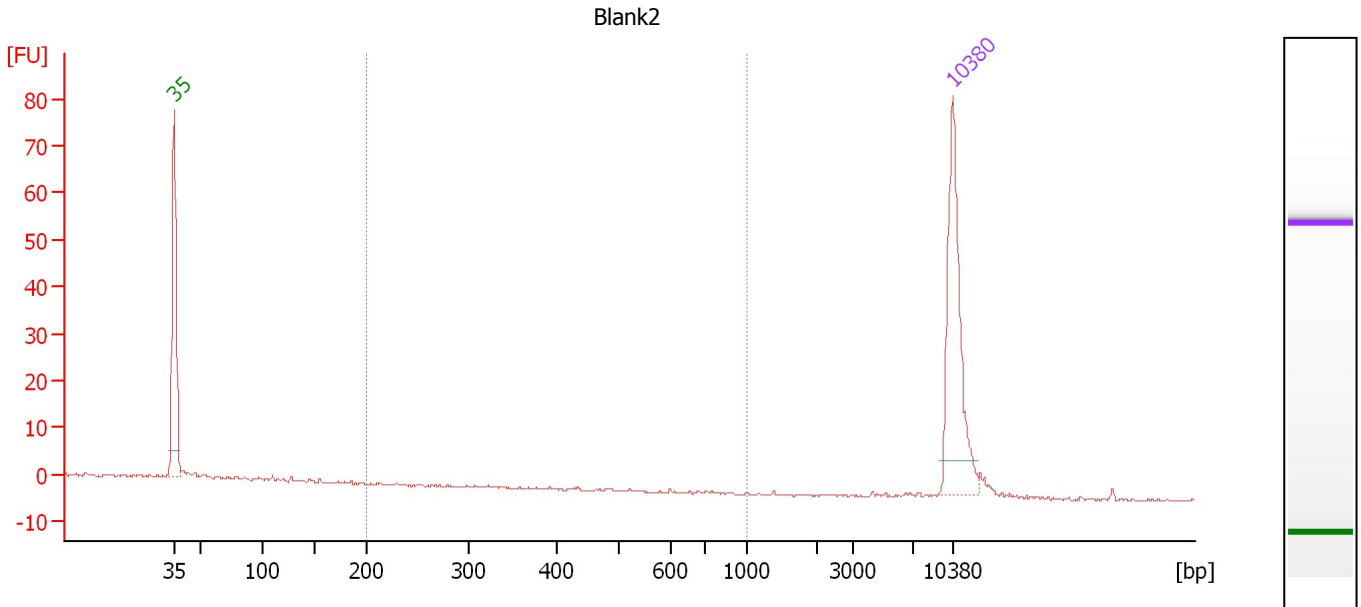
Region table for sample 9 : Blank1

From [bp]	Molarity [pmol/l]	Average Size [bp]	Conc. [pg/μl]	To [bp]	Corr. Area	% of Total	Size distribution in CV [%]	Color
200	0.4	662	0.20	1,000	0.2	1	0.2	Blue

Assay Class: High Sensitivity DNA Assay
 Data Path: C:\...ents and Settings\Bioanalyzer\2012-04-11\2012-04-11_006.xad

Created: 4/11/2012 3:24:42 PM
 Modified: 4/11/2012 4:03:45 PM

Electropherogram Summary Continued ...



Overall Results for sample 10 : Blank2

Number of peaks found: 0 Corr. Area 1: 0.0
 Noise: 0.2

Peak table for sample 10 : Blank2

Peak	Size [bp]	Conc. [pg/μl]	Molarity [pmol/l]	Observations
1	35	125.00	5,411.3	Lower Marker
2	10,380	75.00	10.9	Upper Marker

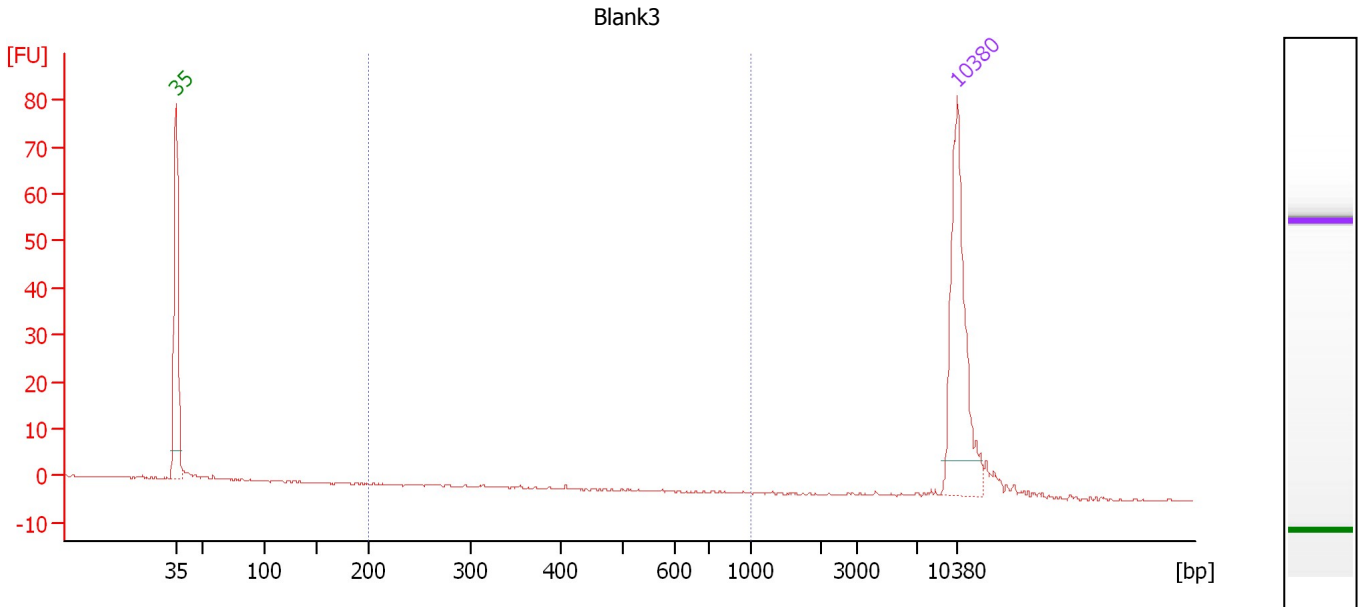
Region table for sample 10 : Blank2

From [bp]	Molarity [pmol/l]	Average Size [bp]	Conc. [pg/μl]	To [bp]	Corr. Area	% of Total	Size distribution in CV [%]	Color
200	0.0	0	0.00	1,000	0.0	0	0.0	Blue

Assay Class: High Sensitivity DNA Assay
 Data Path: C:\...ents and Settings\Bioanalyzer\2012-04-11\2012-04-11_006.xad

Created: 4/11/2012 3:24:42 PM
 Modified: 4/11/2012 4:03:45 PM

Electropherogram Summary Continued ...



Overall Results for sample 11 : Blank3

Number of peaks found: 0 Corr. Area 1: 0.0
 Noise: 0.2

Peak table for sample 11 : Blank3

Peak	Size [bp]	Conc. [pg/μl]	Molarity [pmol/l]	Observations
1	35	125.00	5,411.3	Lower Marker
2	10,380	75.00	10.9	Upper Marker

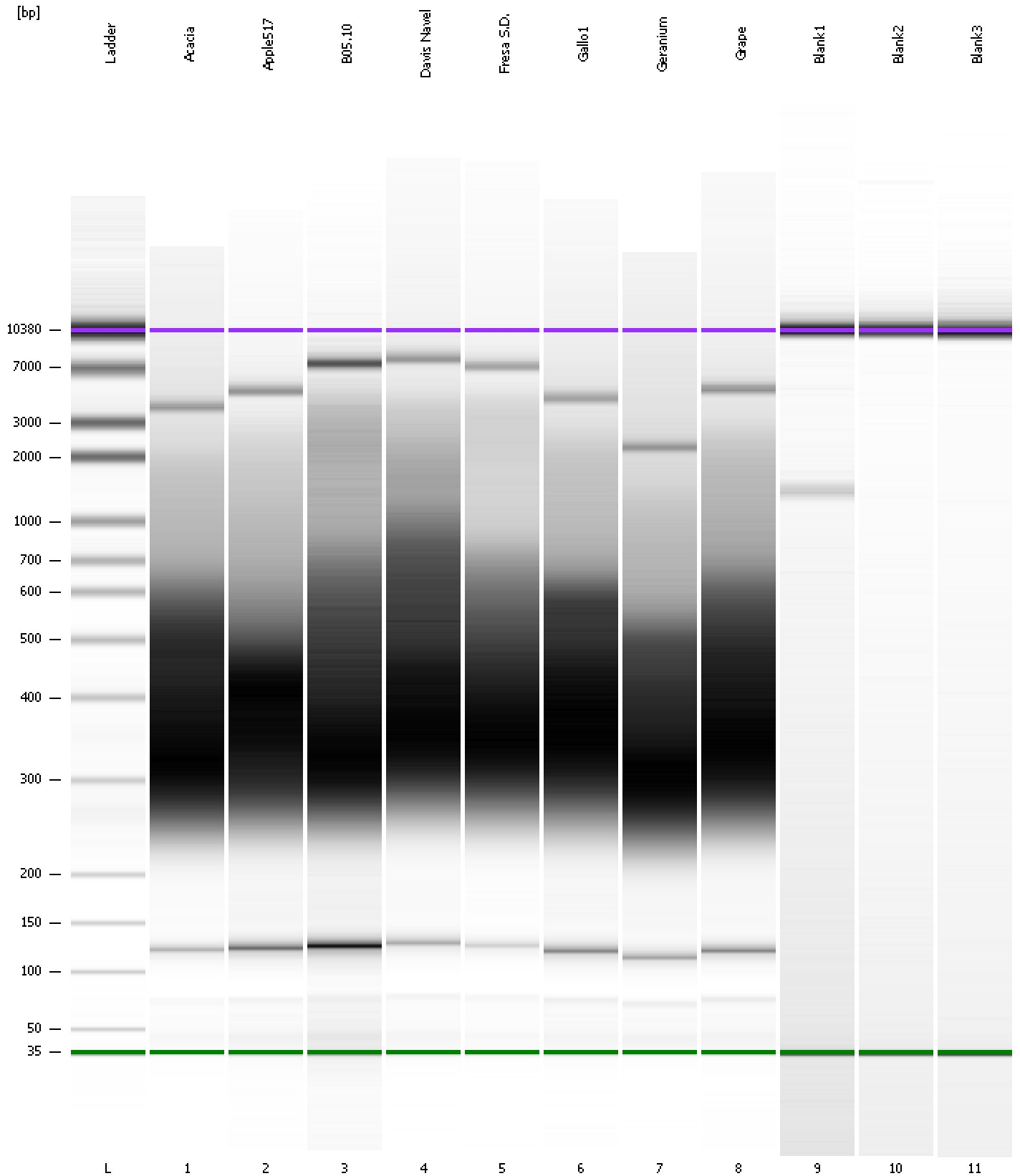
Region table for sample 11 : Blank3

From [bp]	Molarity [pmol/l]	Average Size [bp]	Conc. [pg/μl]	To [bp]	Corr. Area	% of Total	Size distribution in CV [%]	Color
200	0.1	409	0.02	1,000	0.0	0	0.1	Blue

Assay Class: High Sensitivity DNA Assay
Data Path: C:\...ents and Settings\Bioanalyzer\2012-04-11\2012-04-11_006.xad

Created: 4/11/2012 3:24:42 PM
Modified: 4/11/2012 4:03:45 PM

Gel Image



Assay Class: High Sensitivity DNA Assay
 Data Path: C:\...ents and Settings\Bioanalyzer\2012-04-11\2012-04-11_006.xad

Created: 4/11/2012 3:24:42 PM
 Modified: 4/11/2012 4:03:45 PM

Run Logbook

Description	Number	Source	Category	Sub Category	Time	Time Zone	User	Host
Run ended on port 1 (Number of wells acquired: 12)		Instrument	Run		4/11/2012 4:05:55 PM	(GMT --07:00) Pacific Standard Time	UC Davis	D8XSMGH1
Run started on port 1 (File: C:\Documents and Settings\Bioanalyzer\2012-04-11\2012-04-11_006.xad)		Instrument	Run		4/11/2012 3:24:43 PM	(GMT --07:00) Pacific Standard Time	UC Davis	D8XSMGH1
Product Number : G2938B		Instrument	Run		4/11/2012 3:24:43 PM	(GMT --07:00) Pacific Standard Time	UC Davis	D8XSMGH1
Name :		Instrument	Run		4/11/2012 3:24:42 PM	(GMT --07:00) Pacific Standard Time	UC Davis	D8XSMGH1
Vendor : Agilent Technologies		Instrument	Run		4/11/2012 3:24:42 PM	(GMT --07:00) Pacific Standard Time	UC Davis	D8XSMGH1
Serial# : DE13701086		Instrument	Run		4/11/2012 3:24:42 PM	(GMT --07:00) Pacific Standard Time	UC Davis	D8XSMGH1
Firmware : C.01.069		Instrument	Run		4/11/2012 3:24:42 PM	(GMT --07:00) Pacific Standard Time	UC Davis	D8XSMGH1
Cartridge : Electrode		Instrument	Run		4/11/2012 3:24:42 PM	(GMT --07:00) Pacific Standard Time	UC Davis	D8XSMGH1