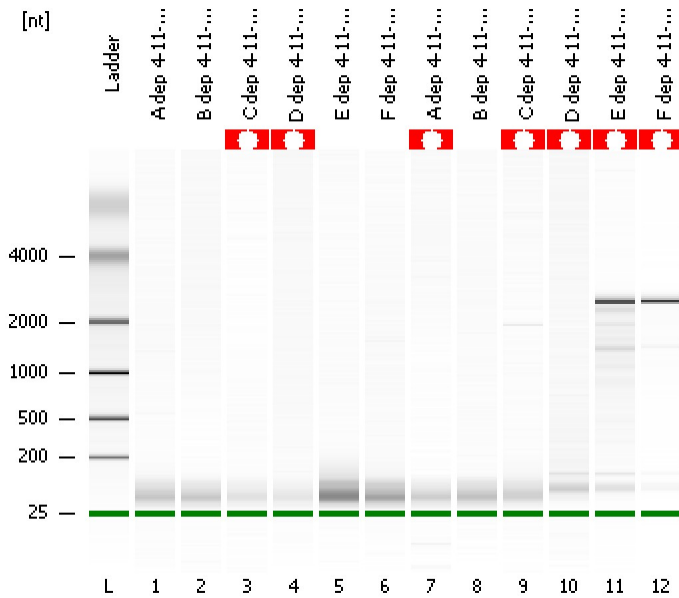


Assay Class: Prokaryote Total RNA Nano
Data Path: C:\...ents and Settings\Bioanalyzer\2012-04-12\2012-04-12_003.xad

Created: 4/12/2012 12:21:45 PM
Modified: 4/12/2012 12:45:34 PM

Electrophoresis File Run Summary



Instrument Information:

Instrument Name: DE13701086 Firmware: C.01.069
Serial#: DE13701086 Type: G2938B

Assay Information:

Assay Origin Path: C:\Program Files\Agilent\2100 bioanalyzer\2100 expert\assays\RNA\Prokaryote Total RNA Nano Series II.xsy
Assay Class: Prokaryote Total RNA Nano
Version: 2.5
Assay Comments: Total RNA Analysis ng sensitivity (Prokaryote)
© Copyright 2003 - 2009 Agilent Technologies, Inc.

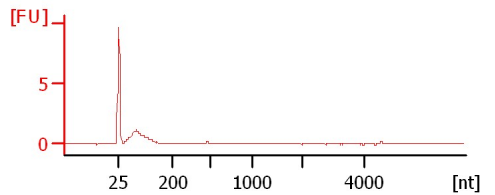
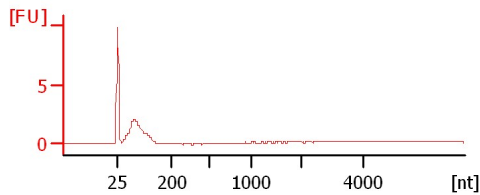
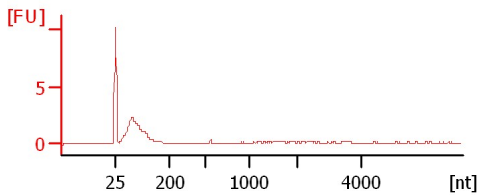
Chip Information:

Chip Lot #:
Reagent Kit Lot #:
Chip Comments:

A dep 4-11-12 (1)

B dep 4-11-12 (1)

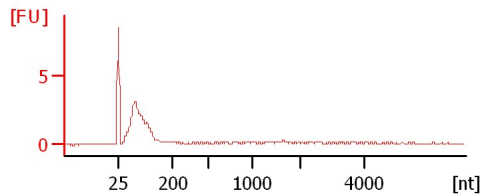
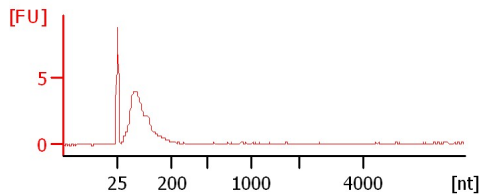
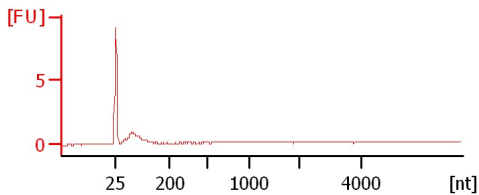
C dep 4-11-12 (1)



D dep 4-11-12 (1)

E dep 4-11-12 (1)

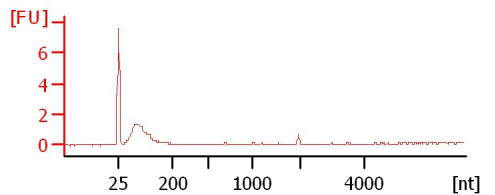
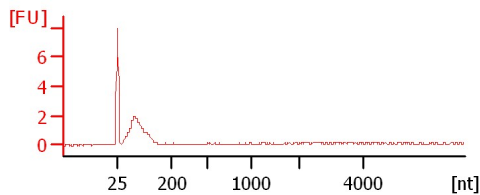
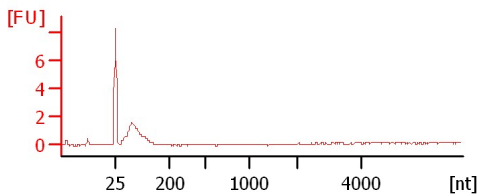
F dep 4-11-12 (1)



A dep 4-11-12 (2)

B dep 4-11-12 (2)

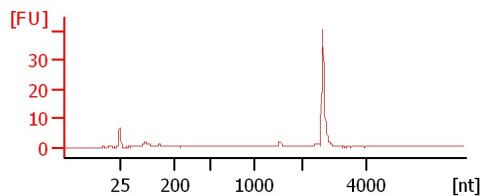
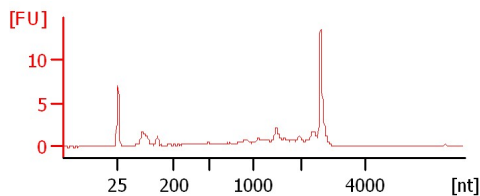
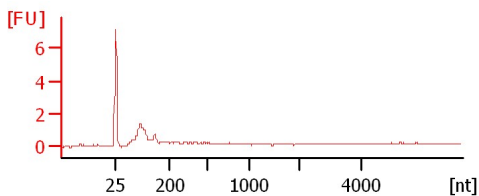
C dep 4-11-12 (2)



D dep 4-11-12 (2)

E dep 4-11-12 (2)

F dep 4-11-12 (2)



Assay Class: Prokaryote Total RNA Nano
Data Path: C:\...ents and Settings\Bioanalyzer\2012-04-12\2012-04-12_003.xad

Created: 4/12/2012 12:21:45 PM
Modified: 4/12/2012 12:45:34 PM

Electrophoresis File Run Summary (Chip Summary)

Sample Name	Sample Comment	Status	Result Label	Result Color
A dep 4-11-12 (1)		✓		
B dep 4-11-12 (1)		✓		
C dep 4-11-12 (1)		✓		
D dep 4-11-12 (1)		✓		
E dep 4-11-12 (1)		✓		
F dep 4-11-12 (1)		✓		
A dep 4-11-12 (2)		✓		
B dep 4-11-12 (2)		✓		
C dep 4-11-12 (2)		✓		
D dep 4-11-12 (2)		✓		
E dep 4-11-12 (2)		✓		
F dep 4-11-12 (2)		✓		
Ladder		✓		

Chip Lot #**Reagent Kit Lot #****Chip Comments :**

Assay Class: Prokaryote Total RNA Nano
Data Path: C:\...ents and Settings\Bioanalyzer\2012-04-12\2012-04-12_003.xad

Created: 4/12/2012 12:21:45 PM
Modified: 4/12/2012 12:45:34 PM

Electrophoresis Assay Details

General Analysis Settings

Number of Available Sample and Ladder Wells (Max.) : 13
Minimum Visible Range [s] : 17
Maximum Visible Range [s] : 70
Start Analysis Time Range [s] : 19
End Analysis Time Range [s] : 69
Ladder Concentration [ng/μl] : 150
Lower Marker Concentration [ng/μl] : 0
Upper Marker Concentration [ng/μl] : 0
Used Lower Marker for Quantitation
Standard Curve Fit is Logarithmic
Show Data Aligned to Lower Marker

Integrator Settings

Integration Start Time [s] : 19
Integration End Time [s] : 69
Slope Threshold : 0.6
Height Threshold [FU] : 0.5
Area Threshold : 0.2
Width Threshold [s] : 0.5
Baseline Plateau [s] : 6

Filter Settings

Filter Width [s] : 0.5
Polynomial Order : 4

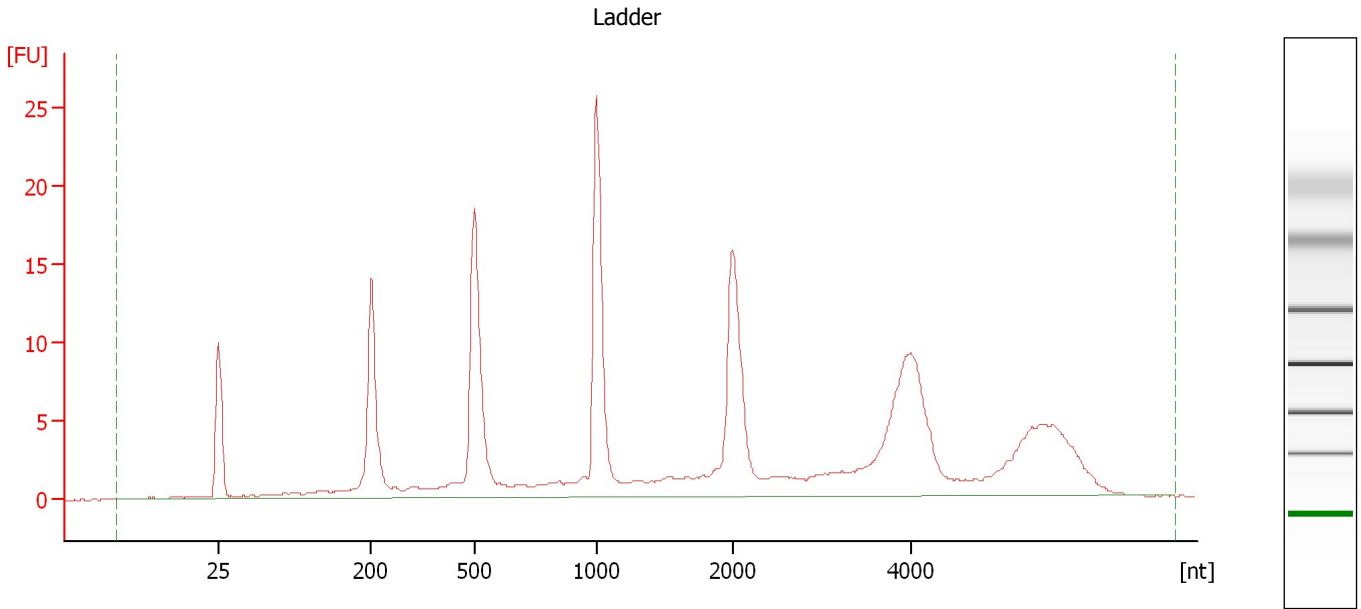
Ladder

Ladder Peak	Size
1	25
2	200
3	500
4	1000
5	2000
6	4000

Assay Class: Prokaryote Total RNA Nano
Data Path: C:\...ents and Settings\Bioanalyzer\2012-04-12\2012-04-12_003.xad

Created: 4/12/2012 12:21:45 PM
Modified: 4/12/2012 12:45:34 PM

Electropherogram Summary



Overall Results for Ladder

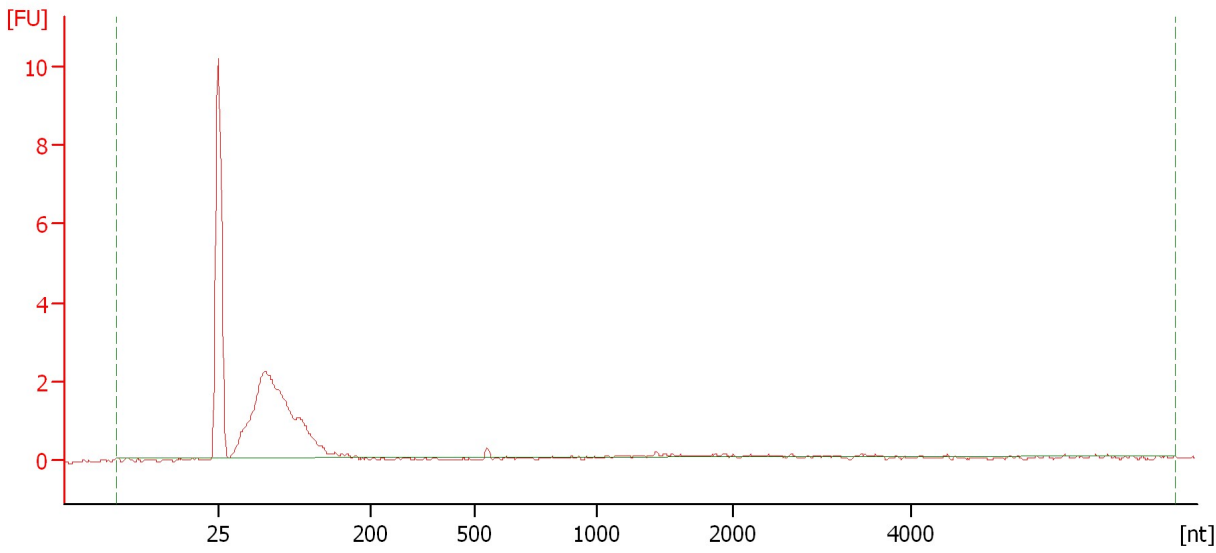
RNA Area: 219.1 RNA Concentration: 150 ng/μl

Assay Class: Prokaryote Total RNA Nano
Data Path: C:\...ents and Settings\Bioanalyzer\2012-04-12\2012-04-12_003.xad

Created: 4/12/2012 12:21:45 PM
Modified: 4/12/2012 12:45:34 PM

Electropherogram Summary Continued ...

A dep 4-11-12 (1)



Overall Results for sample 1 : A dep 4-11-12 (1)

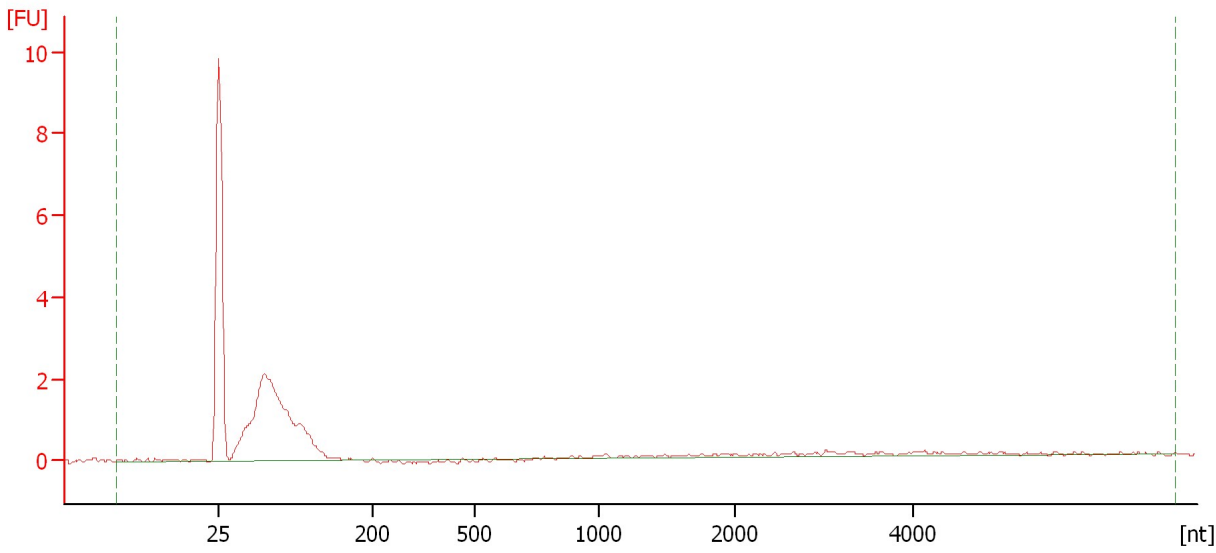
RNA Area:	19.6	rRNA Ratio [23s / 16s]:	0.0
RNA Concentration:	13 ng/μl	RNA Integrity Number (RIN):	2.1 (B.02.08)

Assay Class: Prokaryote Total RNA Nano
Data Path: C:\...ents and Settings\Bioanalyzer\2012-04-12\2012-04-12_003.xad

Created: 4/12/2012 12:21:45 PM
Modified: 4/12/2012 12:45:34 PM

Electropherogram Summary Continued ...

B dep 4-11-12 (1)



Overall Results for sample 2 : B dep 4-11-12 (1)

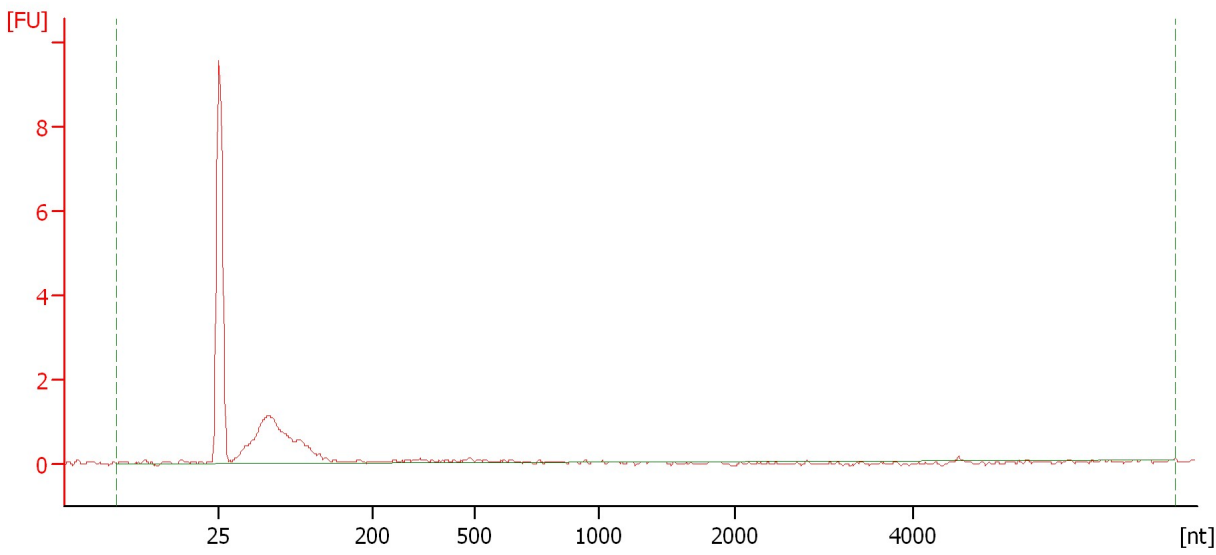
RNA Area:	19.1	rRNA Ratio [23s / 16s]:	0.0
RNA Concentration:	13 ng/μl	RNA Integrity Number (RIN):	2.1 (B.02.08)

Assay Class: Prokaryote Total RNA Nano
Data Path: C:\...ents and Settings\Bioanalyzer\2012-04-12\2012-04-12_003.xad

Created: 4/12/2012 12:21:45 PM
Modified: 4/12/2012 12:45:34 PM

Electropherogram Summary Continued ...

C dep 4-11-12 (1)



Overall Results for sample 3 : C dep 4-11-12 (1)

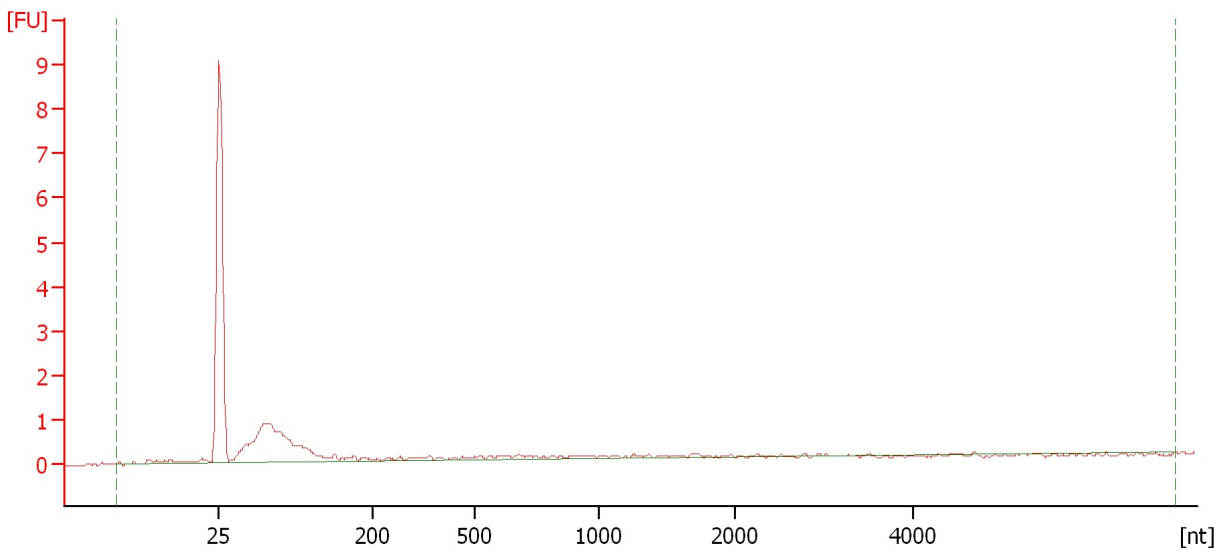
RNA Area:	9.6	rRNA Ratio [23s / 16s]:	0.0
RNA Concentration:	7 ng/μl	RNA Integrity Number (RIN):	N/A (B.02.08)

Assay Class: Prokaryote Total RNA Nano
Data Path: C:\...ents and Settings\Bioanalyzer\2012-04-12\2012-04-12_003.xad

Created: 4/12/2012 12:21:45 PM
Modified: 4/12/2012 12:45:34 PM

Electropherogram Summary Continued ...

D dep 4-11-12 (1)



Overall Results for sample 4 : D dep 4-11-12 (1)

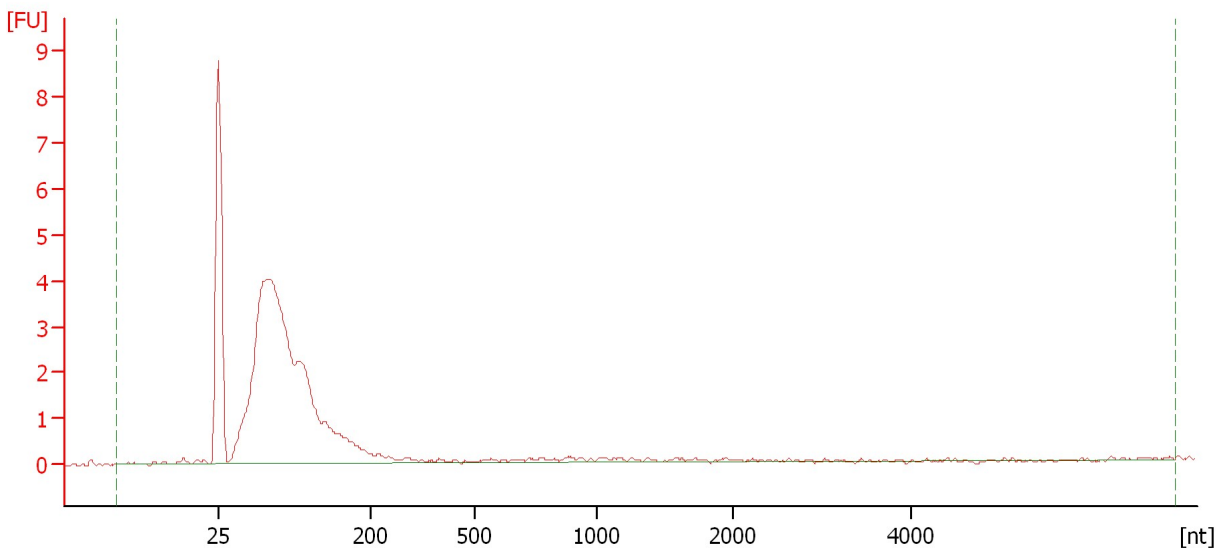
RNA Area:	12.1	rRNA Ratio [23s / 16s]:	0.0
RNA Concentration:	8 ng/μl	RNA Integrity Number (RIN):	N/A (B.02.08)

Assay Class: Prokaryote Total RNA Nano
Data Path: C:\...ents and Settings\Bioanalyzer\2012-04-12\2012-04-12_003.xad

Created: 4/12/2012 12:21:45 PM
Modified: 4/12/2012 12:45:34 PM

Electropherogram Summary Continued ...

E dep 4-11-12 (1)



Overall Results for sample 5 : E dep 4-11-12 (1)

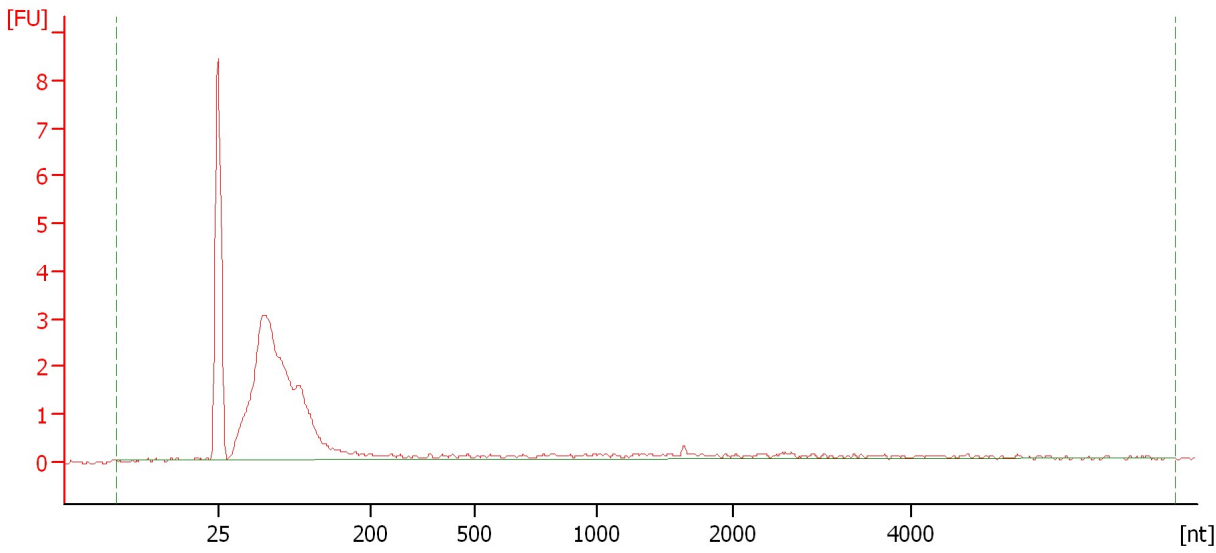
RNA Area:	41.7	rRNA Ratio [23s / 16s]:	0.0
RNA Concentration:	29 ng/μl	RNA Integrity Number (RIN):	2.6 (B.02.08)

Assay Class: Prokaryote Total RNA Nano
Data Path: C:\...ents and Settings\Bioanalyzer\2012-04-12\2012-04-12_003.xad

Created: 4/12/2012 12:21:45 PM
Modified: 4/12/2012 12:45:34 PM

Electropherogram Summary Continued ...

F dep 4-11-12 (1)



Overall Results for sample 6 : F dep 4-11-12 (1)

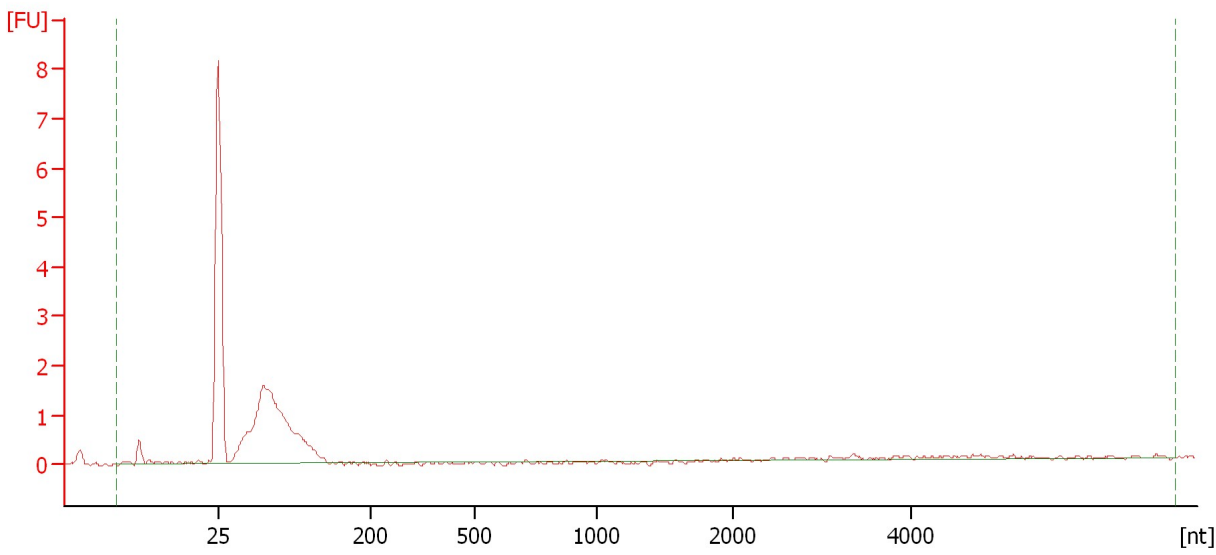
RNA Area:	30.3	rRNA Ratio [23s / 16s]:	0.0
RNA Concentration:	21 ng/μl	RNA Integrity Number (RIN):	2.5 (B.02.08)

Assay Class: Prokaryote Total RNA Nano
Data Path: C:\...ents and Settings\Bioanalyzer\2012-04-12\2012-04-12_003.xad

Created: 4/12/2012 12:21:45 PM
Modified: 4/12/2012 12:45:34 PM

Electropherogram Summary Continued ...

A dep 4-11-12 (2)



Overall Results for sample 7 : A dep 4-11-12 (2)

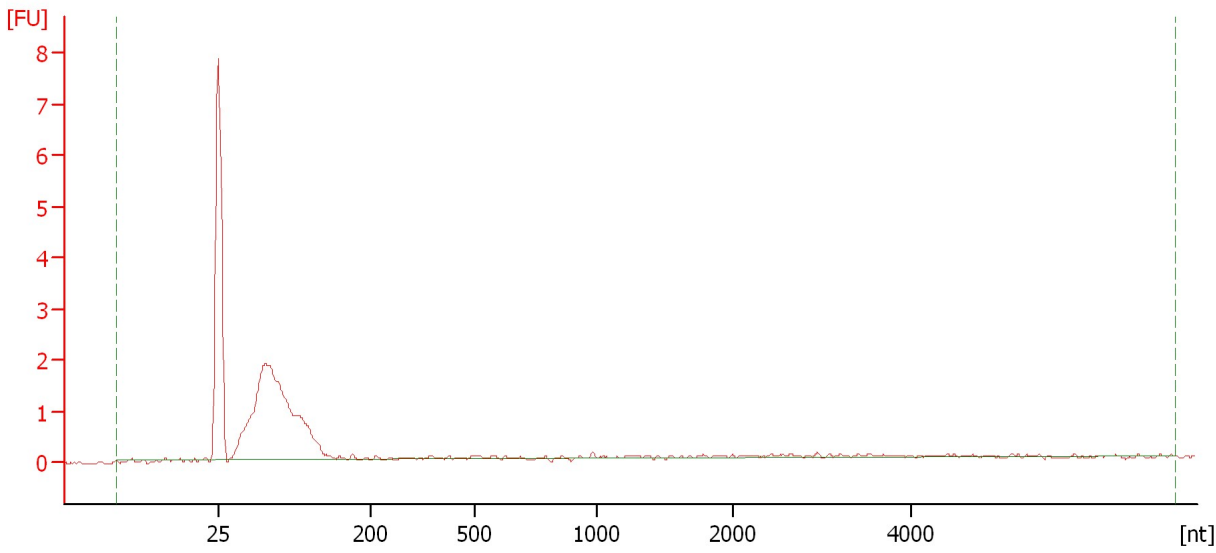
RNA Area:	13.9	rRNA Ratio [23s / 16s]:	0.0
RNA Concentration:	10 ng/μl	RNA Integrity Number (RIN):	N/A (B.02.08)

Assay Class: Prokaryote Total RNA Nano
Data Path: C:\...ents and Settings\Bioanalyzer\2012-04-12\2012-04-12_003.xad

Created: 4/12/2012 12:21:45 PM
Modified: 4/12/2012 12:45:34 PM

Electropherogram Summary Continued ...

B dep 4-11-12 (2)



Overall Results for sample 8 : B dep 4-11-12 (2)

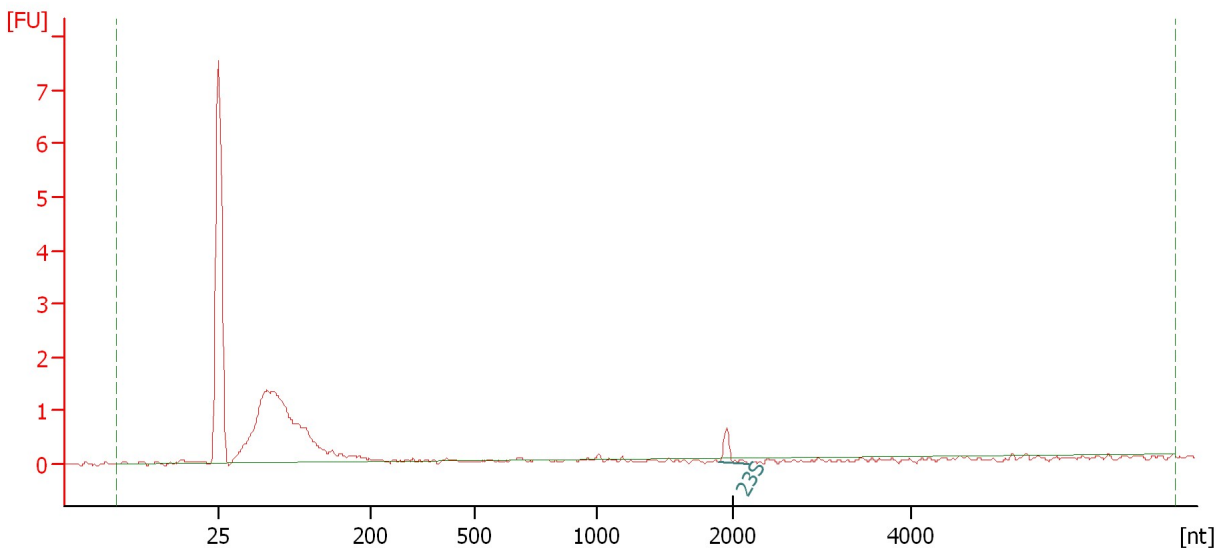
RNA Area:	17.3	rRNA Ratio [23s / 16s]:	0.0
RNA Concentration:	12 ng/μl	RNA Integrity Number (RIN):	2.2 (B.02.08)

Assay Class: Prokaryote Total RNA Nano
Data Path: C:\...ents and Settings\Bioanalyzer\2012-04-12\2012-04-12_003.xad

Created: 4/12/2012 12:21:45 PM
Modified: 4/12/2012 12:45:34 PM

Electropherogram Summary Continued ...

C dep 4-11-12 (2)



Overall Results for sample 9 : C dep 4-11-12 (2)

RNA Area: 13.7 rRNA Ratio [23s / 16s]: 0.0
RNA Concentration: 9 ng/μl RNA Integrity Number (RIN): N/A (B.02.08)

Fragment table for sample 9 : C dep 4-11-12 (2)

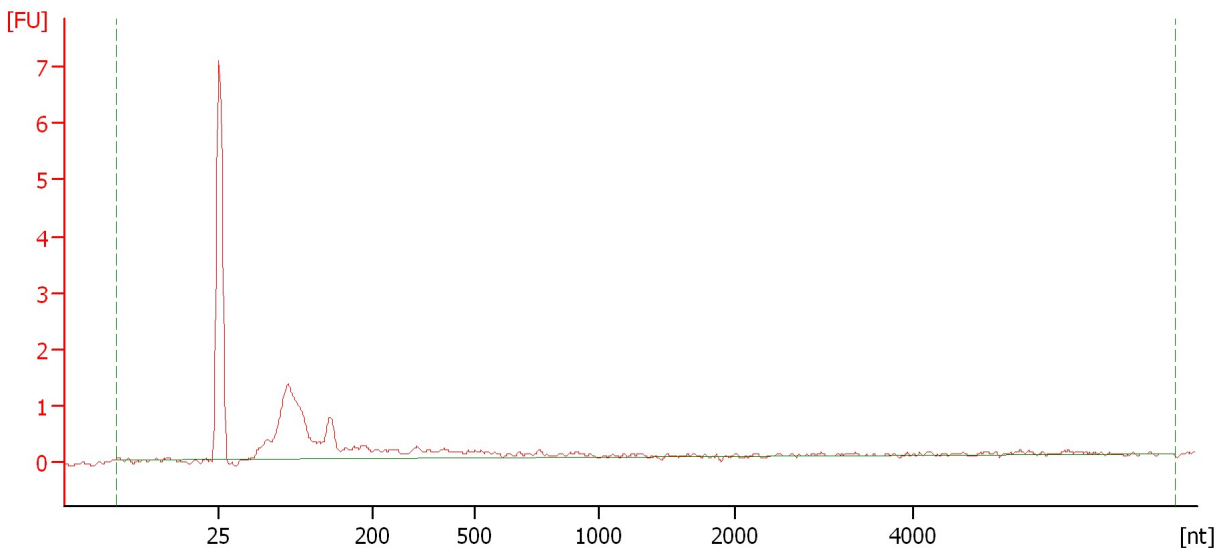
Name	Start Size [nt]	End Size [nt]	Area	% of total Area
23S	1,897	2,191	0.4	3.1

Assay Class: Prokaryote Total RNA Nano
Data Path: C:\...ents and Settings\Bioanalyzer\2012-04-12\2012-04-12_003.xad

Created: 4/12/2012 12:21:45 PM
Modified: 4/12/2012 12:45:34 PM

Electropherogram Summary Continued ...

D dep 4-11-12 (2)



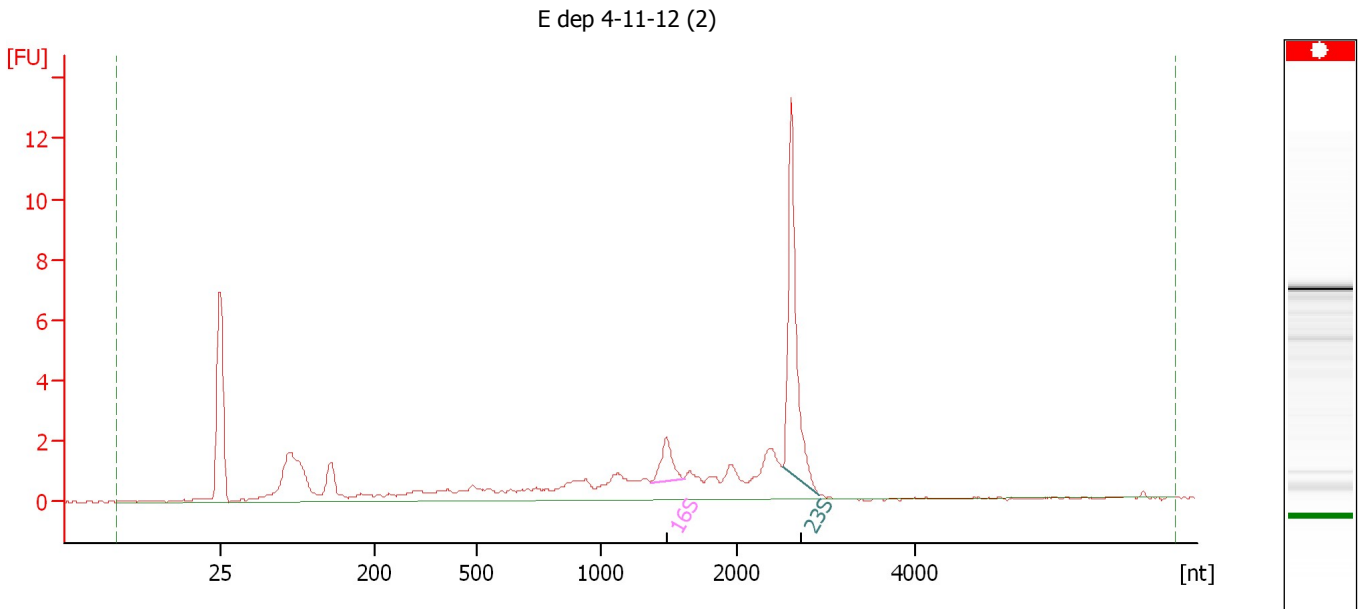
Overall Results for sample 10 : D dep 4-11-12 (2)

RNA Area:	12.8	rRNA Ratio [23s / 16s]:	0.0
RNA Concentration:	9 ng/μl	RNA Integrity Number (RIN):	N/A (B.02.08)

Assay Class: Prokaryote Total RNA Nano
Data Path: C:\...ents and Settings\Bioanalyzer\2012-04-12\2012-04-12_003.xad

Created: 4/12/2012 12:21:45 PM
Modified: 4/12/2012 12:45:34 PM

Electropherogram Summary Continued ...



Overall Results for sample 11 : E dep 4-11-12 (2)

RNA Area: 49.1 rRNA Ratio [23s / 16s]: 5.5
RNA Concentration: 34 ng/μl RNA Integrity Number (RIN): N/A (B.02.08)

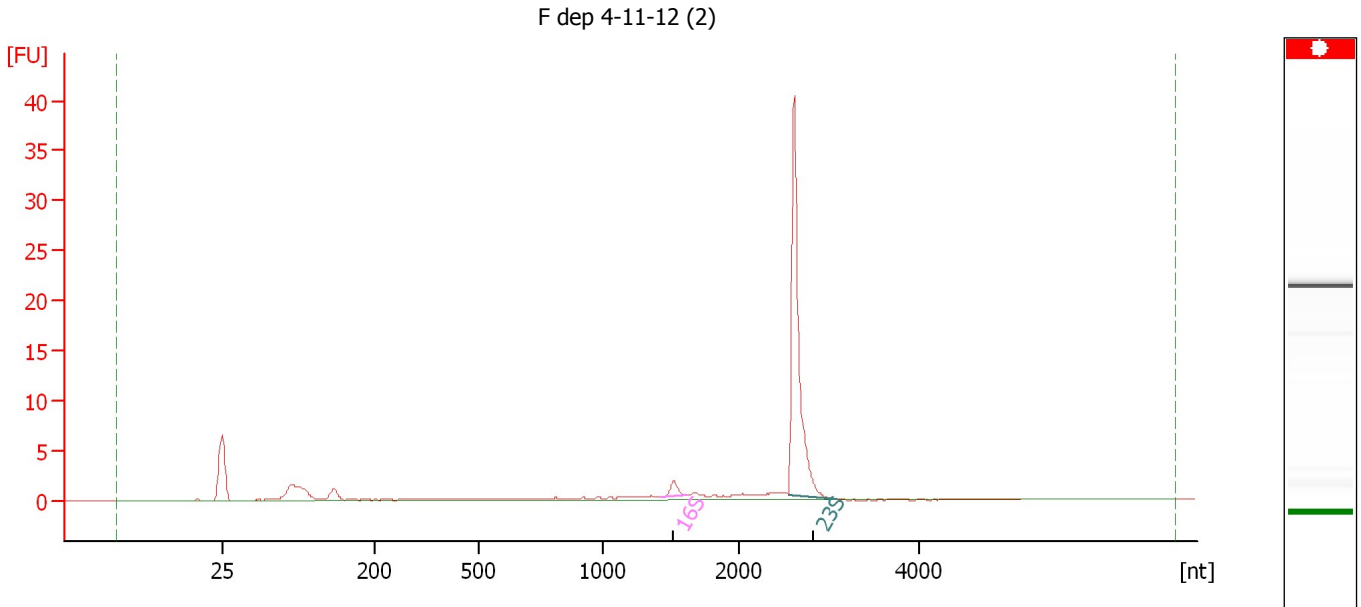
Fragment table for sample 11 : E dep 4-11-12 (2)

Name	Start Size [nt]	End Size [nt]	Area	% of total Area
16S	1,364	1,615	1.8	3.8
23S	2,524	2,918	10.2	20.7

Assay Class: Prokaryote Total RNA Nano
Data Path: C:\...ents and Settings\Bioanalyzer\2012-04-12\2012-04-12_003.xad

Created: 4/12/2012 12:21:45 PM
Modified: 4/12/2012 12:45:34 PM

Electropherogram Summary Continued ...



Overall Results for sample 12 : F dep 4-11-12 (2)

RNA Area: 52.3 rRNA Ratio [23s / 16s]: 22.7
RNA Concentration: 36 ng/μl RNA Integrity Number (RIN): N/A (B.02.08)

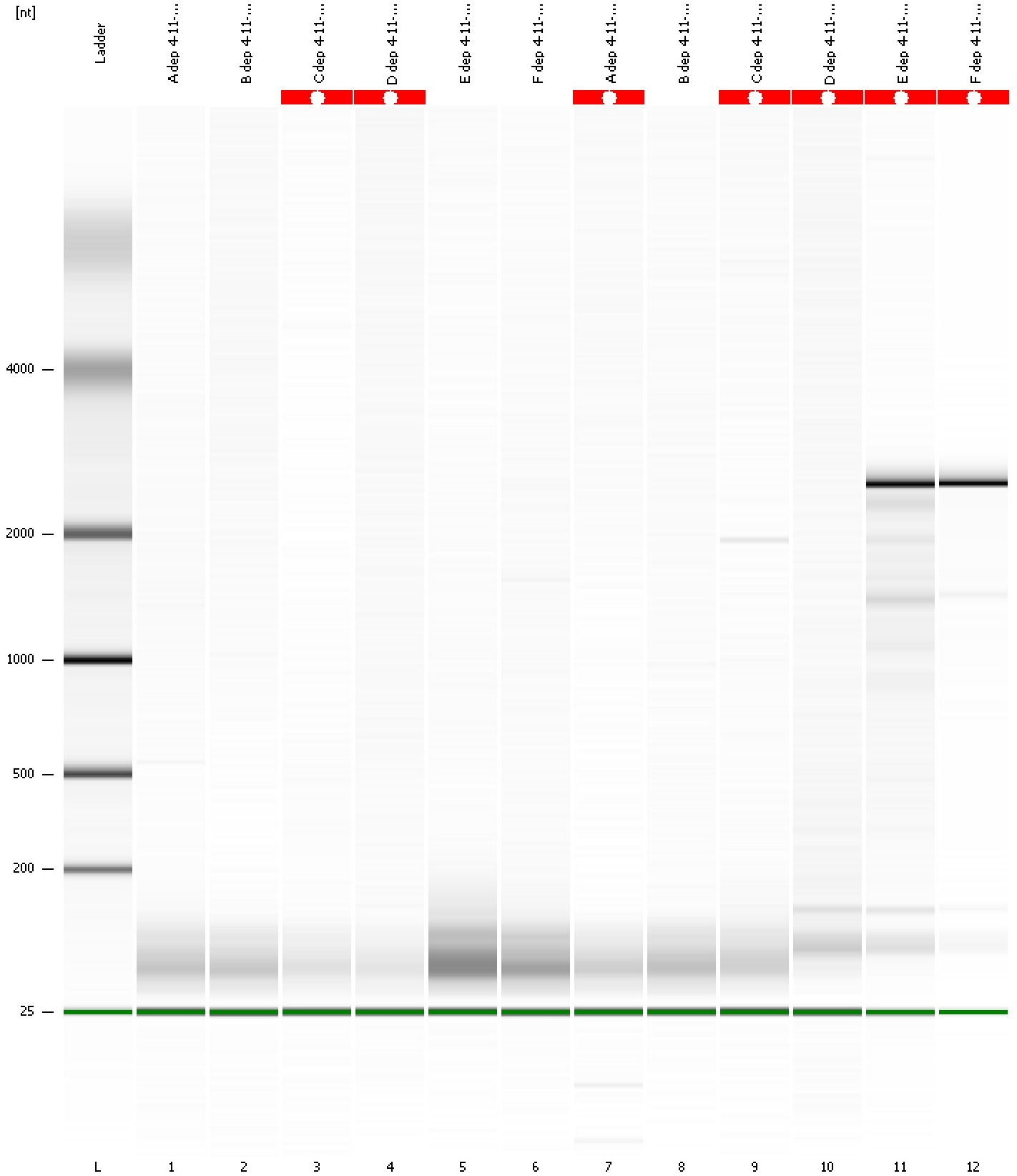
Fragment table for sample 12 : F dep 4-11-12 (2)

Name	Start Size [nt]	End Size [nt]	Area	% of total Area
16S	1,428	1,624	1.4	2.6
23S	2,547	3,095	30.9	59.1

Assay Class: Prokaryote Total RNA Nano
Data Path: C:\...ents and Settings\Bioanalyzer\2012-04-12\2012-04-12_003.xad

Created: 4/12/2012 12:21:45 PM
Modified: 4/12/2012 12:45:34 PM

Gel Image



Assay Class: Prokaryote Total RNA Nano
 Data Path: C:\...ents and Settings\Bioanalyzer\2012-04-12\2012-04-12_003.xad

Created: 4/12/2012 12:21:45 PM
 Modified: 4/12/2012 12:45:34 PM

Run Logbook

Description	Number	Source	Category	Sub Category	Time	Time Zone	User	Host
Run ended on port 1 (Number of wells acquired: 13)		Instrument	Run		4/12/2012 12:45:32 PM	(GMT --07:00) Pacific Standard Time	UC Davis	D8XSMGH1
Run started on port 1 (File: C:\Documents and Settings\Bioanalyzer\2012-04-12\2012-04-12_003.xad)		Instrument	Run		4/12/2012 12:21:51 PM	(GMT --07:00) Pacific Standard Time	UC Davis	D8XSMGH1
Product Number : G2938B		Instrument	Run		4/12/2012 12:21:51 PM	(GMT --07:00) Pacific Standard Time	UC Davis	D8XSMGH1
Name :		Instrument	Run		4/12/2012 12:21:51 PM	(GMT --07:00) Pacific Standard Time	UC Davis	D8XSMGH1
Vendor : Agilent Technologies		Instrument	Run		4/12/2012 12:21:51 PM	(GMT --07:00) Pacific Standard Time	UC Davis	D8XSMGH1
Serial# : DE13701086		Instrument	Run		4/12/2012 12:21:51 PM	(GMT --07:00) Pacific Standard Time	UC Davis	D8XSMGH1
Firmware : C.01.069		Instrument	Run		4/12/2012 12:21:51 PM	(GMT --07:00) Pacific Standard Time	UC Davis	D8XSMGH1
Cartridge : Electrode		Instrument	Run		4/12/2012 12:21:51 PM	(GMT --07:00) Pacific Standard Time	UC Davis	D8XSMGH1