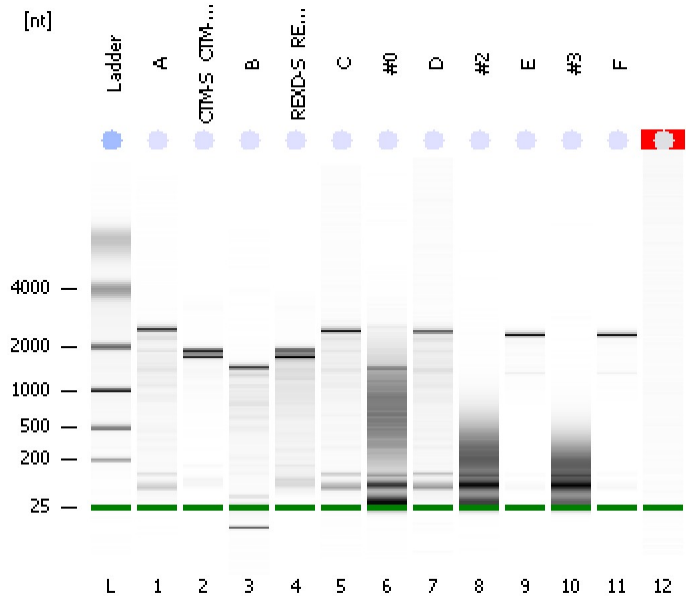


Assay Class: Eukaryote Total RNA Nano
Data Path: C:\...ents and Settings\Bioanalyzer\2012-04-12\2012-04-12_011.xad

Created: 4/12/2012 4:22:31 PM
Modified: 4/12/2012 4:49:59 PM

Electrophoresis File Run Summary



Instrument Information:

Instrument Name: DE13701086 Firmware: C.01.069
Serial#: DE13701086 Type: G2938B

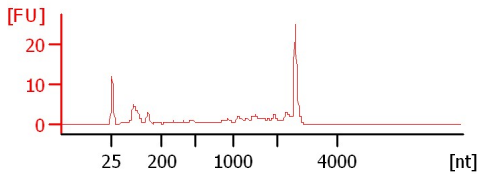
Assay Information:

Assay Origin Path: C:\Program Files\Agilent\2100 bioanalyzer\2100 expert\assays\RNA\Eukaryote Total RNA Nano Series II.xsy
Assay Class: Eukaryote Total RNA Nano
Version: 2.6
Assay Comments: Total RNA Analysis ng sensitivity (Eukaryote)
© Copyright 2003 - 2009 Agilent Technologies, Inc.

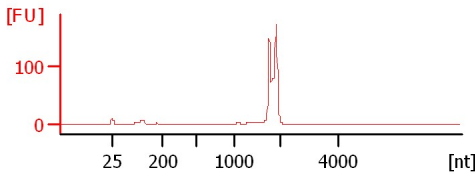
Chip Information:

Chip Lot #:
Reagent Kit Lot #:
Chip Comments:

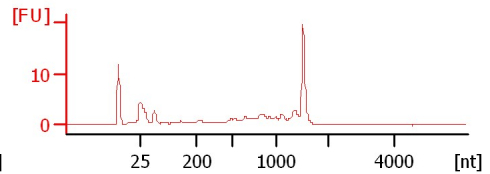
A
RIN: 6



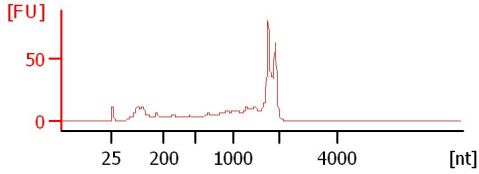
CTM-S & CTM-B Pool
RIN: 6.40



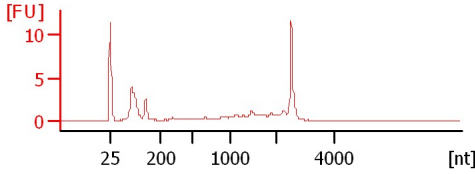
B
RIN: 5.90



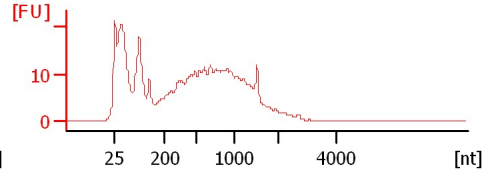
REXD-S & REXD-B Pool
RIN: 4.50



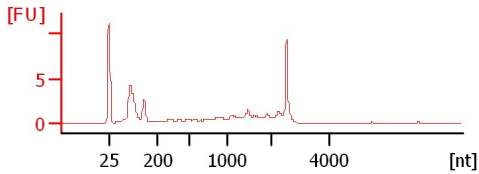
C
RIN: 6.20



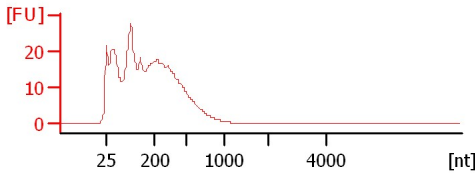
#0
RIN: 2.60



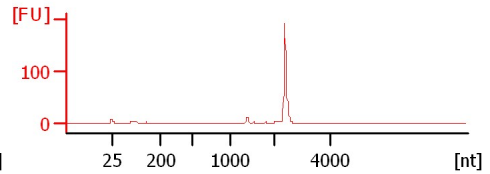
D
RIN: 2.40



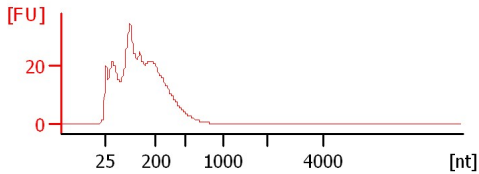
#2
RIN: 2.20



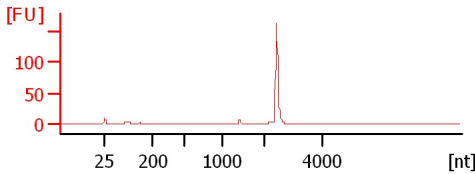
E
RIN: 7.50



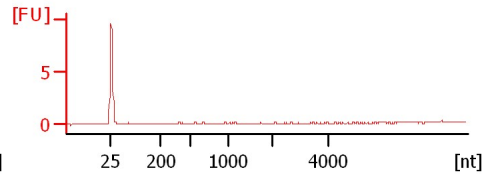
#3
RIN: 2.30



F
RIN: 7.40



RIN N/A



Assay Class: Eukaryote Total RNA Nano
 Data Path: C:\...ents and Settings\Bioanalyzer\2012-04-12\2012-04-12_011.xad

Created: 4/12/2012 4:22:31 PM
 Modified: 4/12/2012 4:49:59 PM

Electrophoresis File Run Summary (Chip Summary)

Sample Name	Sample Comment	Status	Result Label	Result Color
A		✓	RIN:6	
CTM-S & CTM-B Pool		✓	RIN: 6.40	
B		✓	RIN: 5.90	
REXD-S & REXD-B Pool		✓	RIN: 4.50	
C		✓	RIN: 6.20	
#0		✓	RIN: 2.60	
D		✓	RIN: 2.40	
#2		✓	RIN: 2.20	
E		✓	RIN: 7.50	
#3		✓	RIN: 2.30	
F		✓	RIN: 7.40	
Ladder		✓	RIN N/A	
		✓	All Other Samples	

Chip Lot #

Reagent Kit Lot #

Chip Comments :

Assay Class: Eukaryote Total RNA Nano
Data Path: C:\...ents and Settings\Bioanalyzer\2012-04-12\2012-04-12_011.xad

Created: 4/12/2012 4:22:31 PM
Modified: 4/12/2012 4:49:59 PM

Electrophoresis Assay Details

General Analysis Settings

Number of Available Sample and Ladder Wells (Max.) : 13
Minimum Visible Range [s] : 17
Maximum Visible Range [s] : 70
Start Analysis Time Range [s] : 19
End Analysis Time Range [s] : 69
Ladder Concentration [ng/μl] : 150
Lower Marker Concentration [ng/μl] : 0
Upper Marker Concentration [ng/μl] : 0
Used Lower Marker for Quantitation
Standard Curve Fit is Logarithmic
Show Data Aligned to Lower Marker

Integrator Settings

Integration Start Time [s] : 19
Integration End Time [s] : 69
Slope Threshold : 0.6
Height Threshold [FU] : 0.5
Area Threshold : 0.2
Width Threshold [s] : 0.5
Baseline Plateau [s] : 6

Filter Settings

Filter Width [s] : 0.5
Polynomial Order : 4

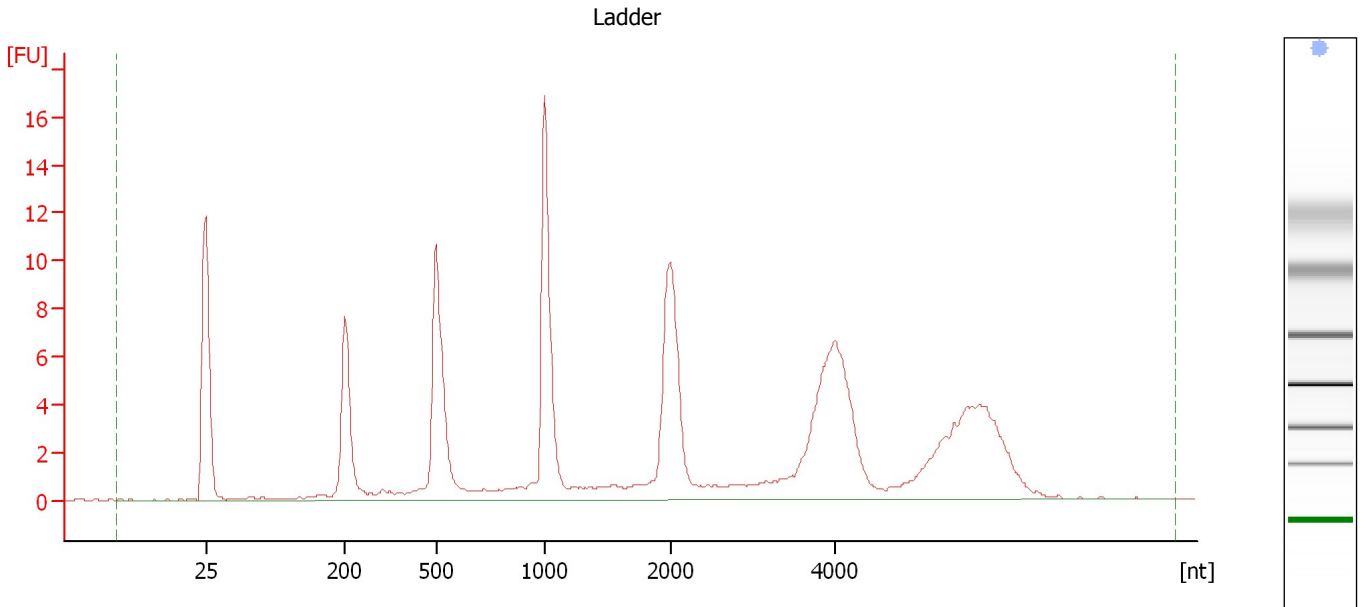
Ladder

Ladder Peak	Size
1	25
2	200
3	500
4	1000
5	2000
6	4000

Assay Class: Eukaryote Total RNA Nano
Data Path: C:\...ents and Settings\Bioanalyzer\2012-04-12\2012-04-12_011.xad

Created: 4/12/2012 4:22:31 PM
Modified: 4/12/2012 4:49:59 PM

Electropherogram Summary



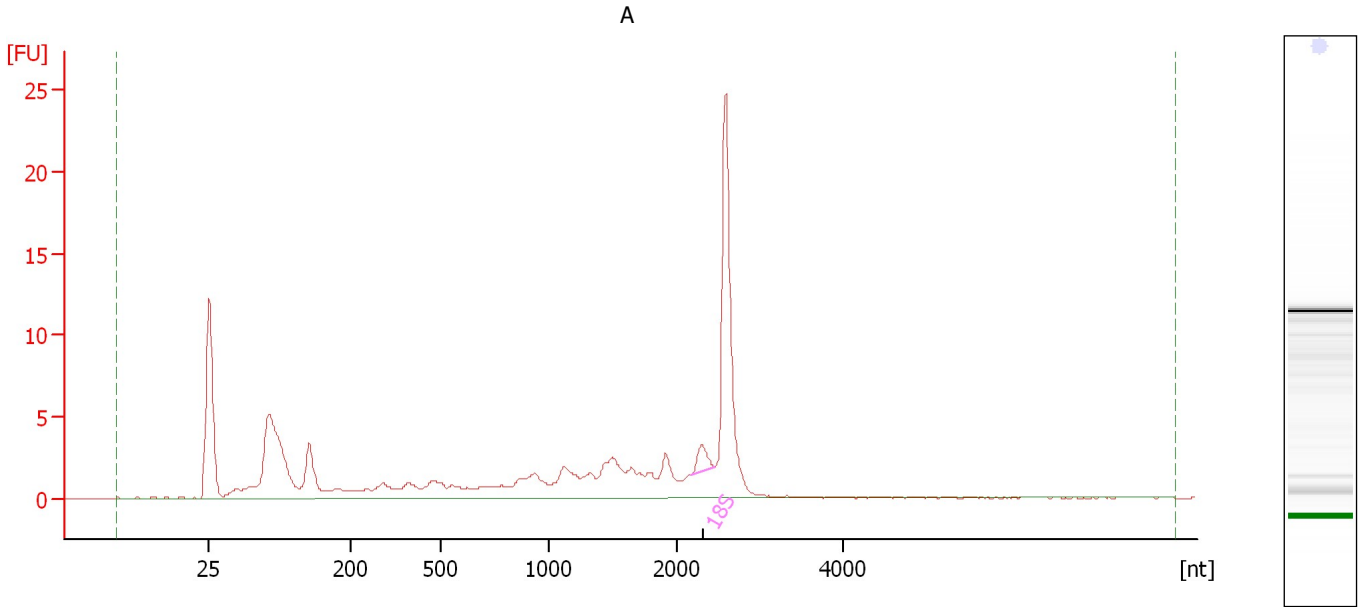
Overall Results for Ladder

RNA Area:	139.2	Result Flagging Color:	
RNA Concentration:	150 ng/ μ l	Result Flagging Label:	All Other Samples

Assay Class: Eukaryote Total RNA Nano
Data Path: C:\...ents and Settings\Bioanalyzer\2012-04-12\2012-04-12_011.xad

Created: 4/12/2012 4:22:31 PM
Modified: 4/12/2012 4:49:59 PM

Electropherogram Summary Continued ...



Overall Results for sample 1 : A

RNA Area:	103.6	RNA Integrity Number (RIN):	6 (B.02.08, Anomaly Threshold(s) manually adapted)
RNA Concentration:	112 ng/μl	Result Flagging Color:	
rRNA Ratio [28s / 18s]:	0.0	Result Flagging Label:	RIN:6

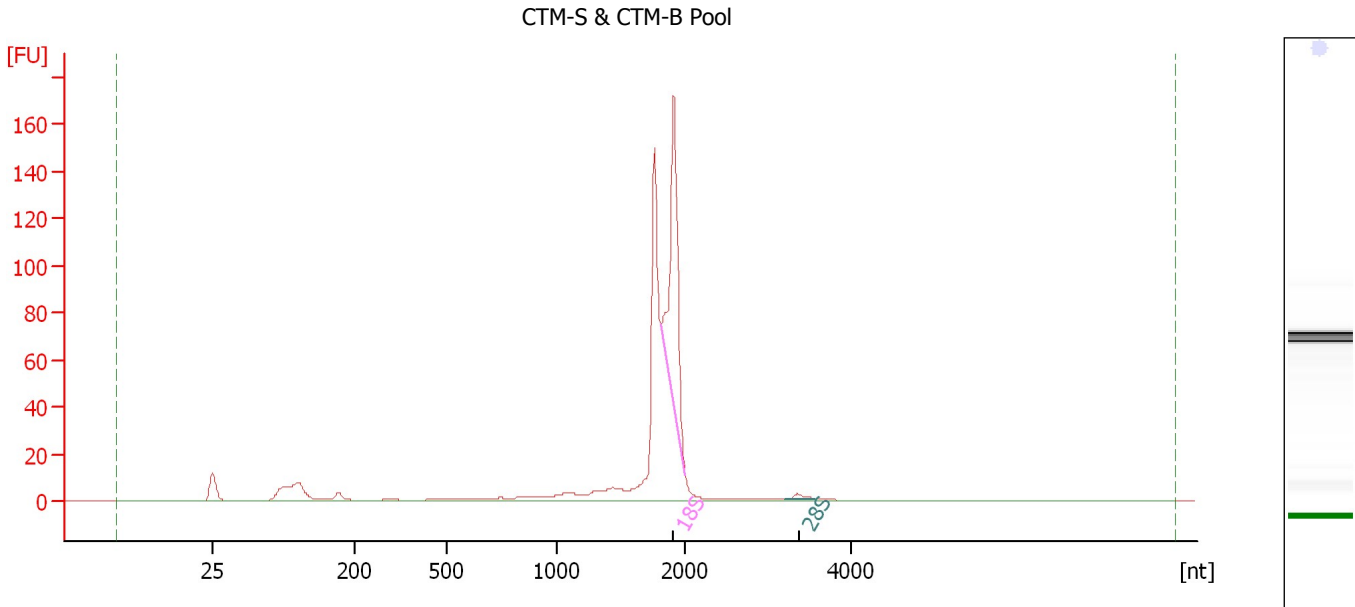
Fragment table for sample 1 : A

Name	Start Size [nt]	End Size [nt]	Area	% of total Area
18S	2,170	2,454	1.8	1.8

Assay Class: Eukaryote Total RNA Nano
 Data Path: C:\...ents and Settings\Bioanalyzer\2012-04-12\2012-04-12_011.xad

Created: 4/12/2012 4:22:31 PM
 Modified: 4/12/2012 4:49:59 PM

Electropherogram Summary Continued ...



Overall Results for sample 2 : CTM-S & CTM-B Pool

RNA Area:	479.6	RNA Integrity Number (RIN):	6.4 (B.02.08, Anomaly Threshold(s) manually adapted)
RNA Concentration:	517 ng/μl		
rRNA Ratio [28s / 18s]:	0.0	Result Flagging Color:	
		Result Flagging Label:	RIN: 6.40

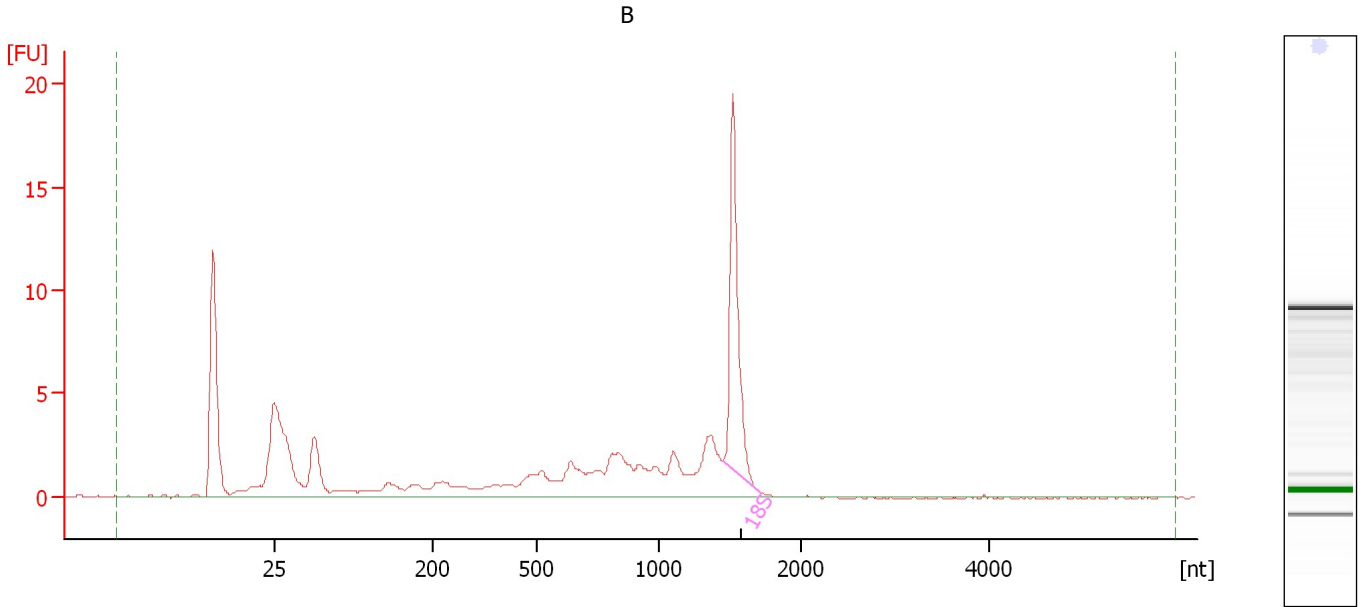
Fragment table for sample 2 : CTM-S & CTM-B Pool

Name	Start Size [nt]	End Size [nt]	Area	% of total Area
18S	1,812	2,007	110.5	23.0
28S	3,210	3,568	2.3	0.5

Assay Class: Eukaryote Total RNA Nano
 Data Path: C:\...ents and Settings\Bioanalyzer\2012-04-12\2012-04-12_011.xad

Created: 4/12/2012 4:22:31 PM
 Modified: 4/12/2012 4:49:59 PM

Electropherogram Summary Continued ...



Overall Results for sample 3 : B

RNA Area:	87.5	RNA Integrity Number (RIN):	5.9 (B.02.08, Anomaly Threshold(s) manually adapted)
RNA Concentration:	94 ng/μl	Result Flagging Color:	
rRNA Ratio [28s / 18s]:	0.0	Result Flagging Label:	RIN: 5.90

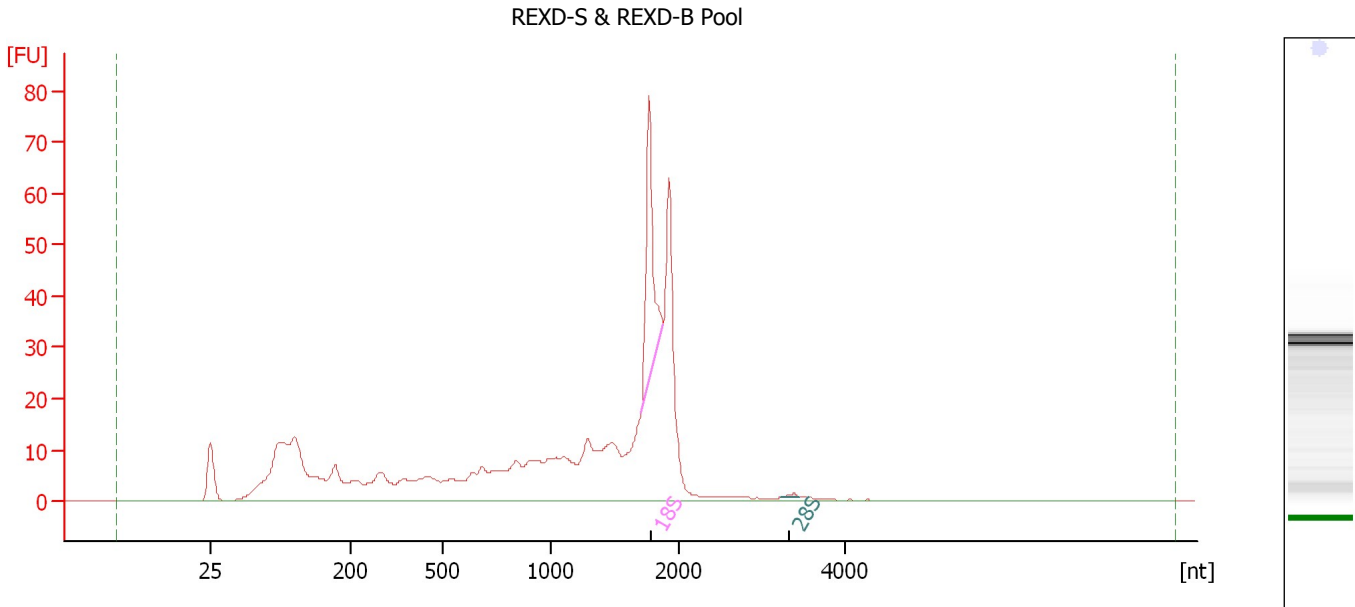
Fragment table for sample 3 : B

Name	Start Size [nt]	End Size [nt]	Area	% of total Area
18S	1,448	1,717	16.3	18.7

Assay Class: Eukaryote Total RNA Nano
Data Path: C:\...ents and Settings\Bioanalyzer\2012-04-12\2012-04-12_011.xad

Created: 4/12/2012 4:22:31 PM
Modified: 4/12/2012 4:49:59 PM

Electropherogram Summary Continued ...



Overall Results for sample 4 : REXD-S & REXD-B Pool

RNA Area: 528.1 RNA Integrity Number (RIN): 4.5 (B.02.08)
RNA Concentration: 569 ng/μl Result Flagging Color:
rRNA Ratio [28s / 18s]: 0.0 Result Flagging Label: RIN: 4.50

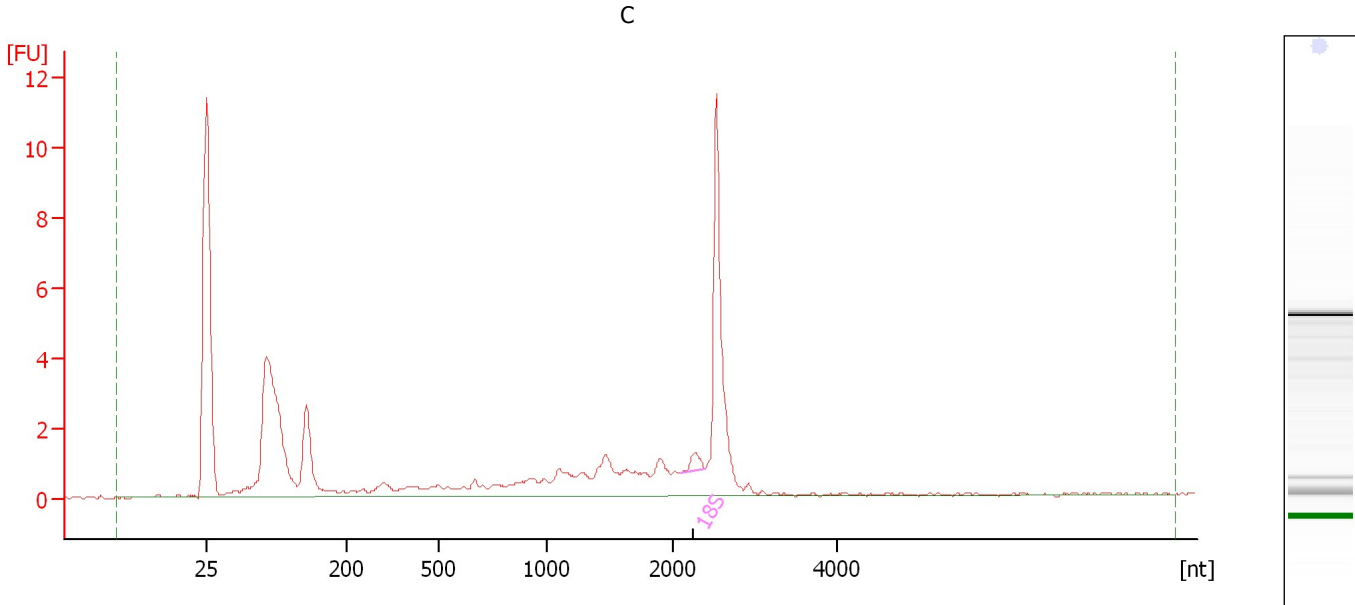
Fragment table for sample 4 : REXD-S & REXD-B Pool

Name	Start Size [nt]	End Size [nt]	Area	% of total Area
18S	1,708	1,876	44.9	8.5
28S	3,227	3,459	0.6	0.1

Assay Class: Eukaryote Total RNA Nano
Data Path: C:\...ents and Settings\Bioanalyzer\2012-04-12\2012-04-12_011.xad

Created: 4/12/2012 4:22:31 PM
Modified: 4/12/2012 4:49:59 PM

Electropherogram Summary Continued ...



Overall Results for sample 5 : C

RNA Area:	52.7	RNA Integrity Number (RIN):	6.2 (B.02.08, Anomaly Threshold(s) manually adapted)
RNA Concentration:	57 ng/μl	Result Flagging Color:	
rRNA Ratio [28s / 18s]:	0.0	Result Flagging Label:	RIN: 6.20

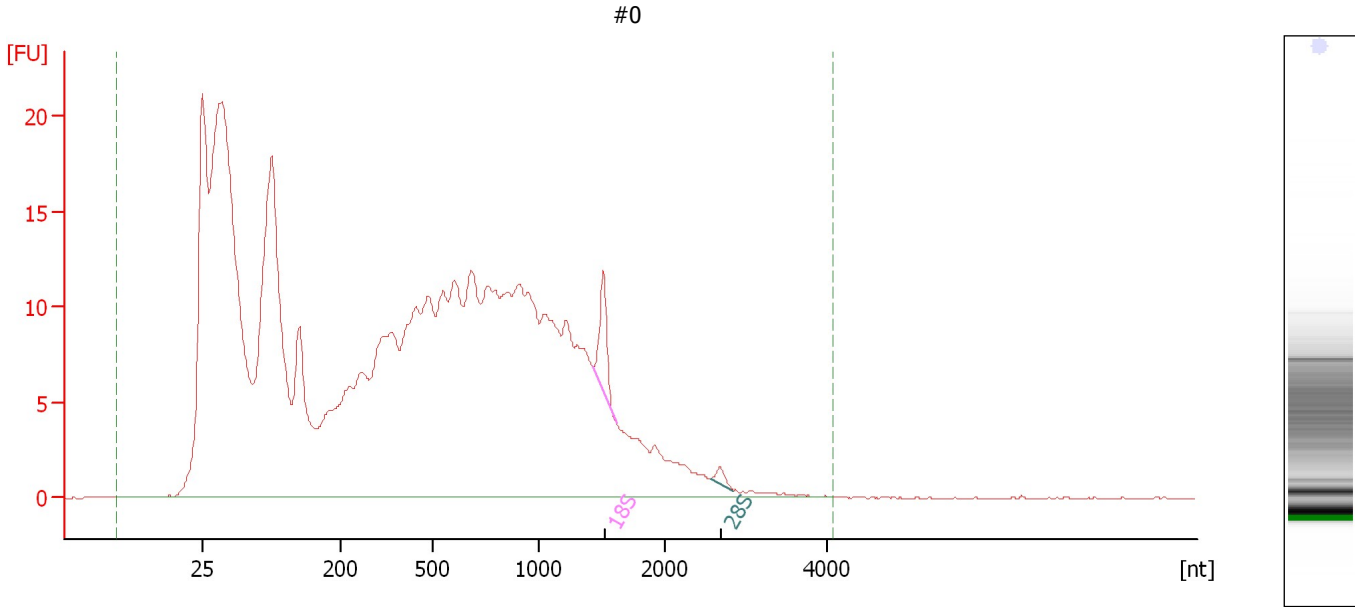
Fragment table for sample 5 : C

Name	Start Size [nt]	End Size [nt]	Area	% of total Area
18S	2,091	2,389	0.6	1.1

Assay Class: Eukaryote Total RNA Nano
 Data Path: C:\...ents and Settings\Bioanalyzer\2012-04-12\2012-04-12_011.xad

Created: 4/12/2012 4:22:31 PM
 Modified: 4/12/2012 4:49:59 PM

Electropherogram Summary Continued ...



Setpoint Deviations for sample 6 : #0

End Analysis Time Range [s] : 53

Overall Results for sample 6 : #0

RNA Area:	573.3	RNA Integrity Number (RIN):	2.6 (B.02.08)
RNA Concentration:	618 ng/μl	Result Flagging Color:	
rRNA Ratio [28s / 18s]:	0.1	Result Flagging Label:	RIN: 2.60

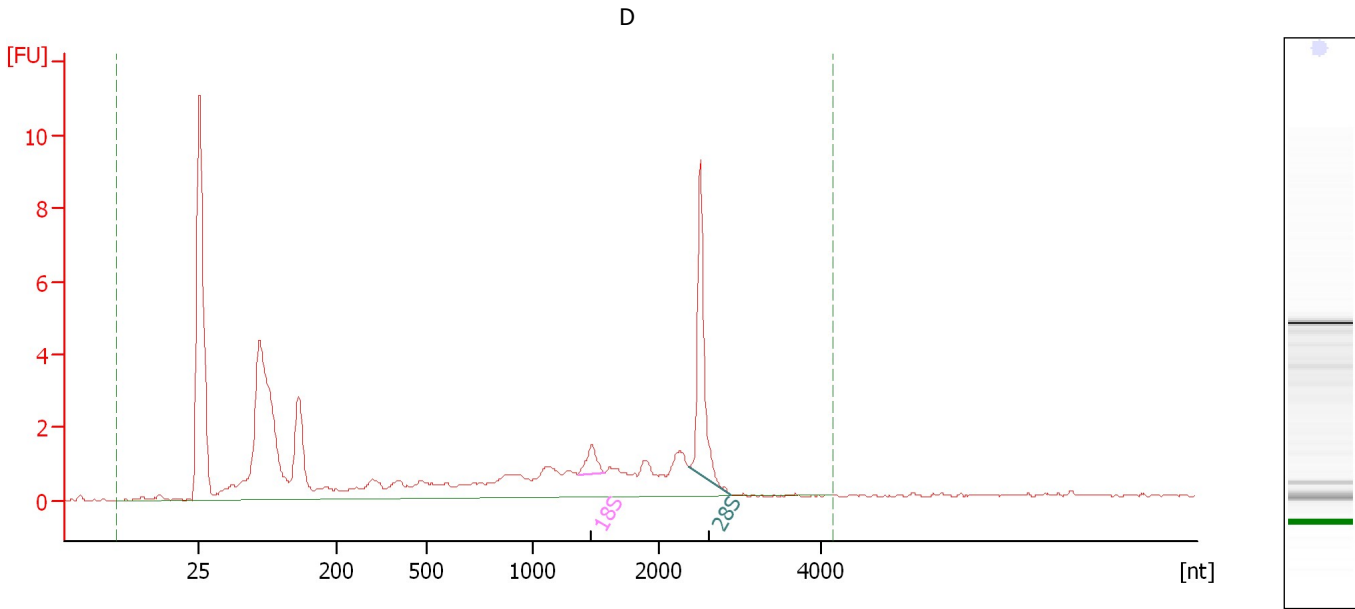
Fragment table for sample 6 : #0

Name	Start Size [nt]	End Size [nt]	Area	% of total Area
18S	1,435	1,614	5.7	1.0
28S	2,558	2,846	0.9	0.1

Assay Class: Eukaryote Total RNA Nano
Data Path: C:\...ents and Settings\Bioanalyzer\2012-04-12\2012-04-12_011.xad

Created: 4/12/2012 4:22:31 PM
Modified: 4/12/2012 4:49:59 PM

Electropherogram Summary Continued ...



Setpoint Deviations for sample 7 : D

End Analysis Time Range [s] : 53

Overall Results for sample 7 : D

RNA Area:	57.7	RNA Integrity Number (RIN):	2.4 (B.02.08)
RNA Concentration:	62 ng/μl	Result Flagging Color:	
rRNA Ratio [28s / 18s]:	6.4	Result Flagging Label:	RIN: 2.40

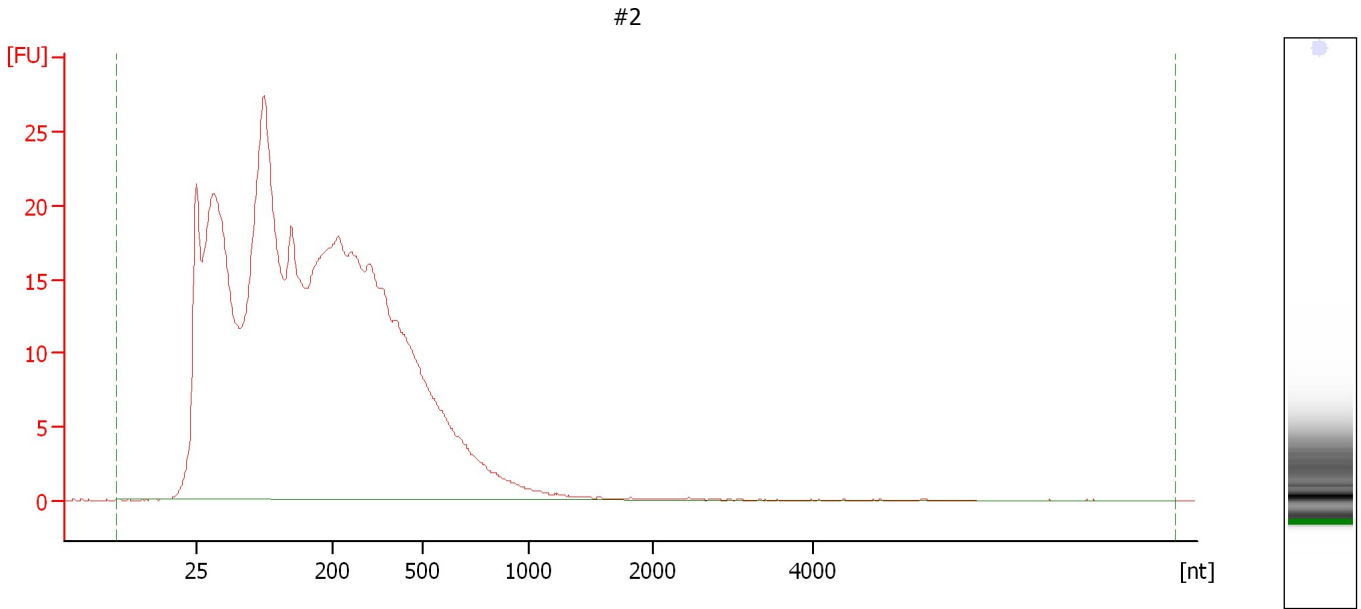
Fragment table for sample 7 : D

Name	Start Size [nt]	End Size [nt]	Area	% of total Area
18S	1,360	1,566	1.0	1.8
28S	2,388	2,888	6.7	11.6

Assay Class: Eukaryote Total RNA Nano
Data Path: C:\...ents and Settings\Bioanalyzer\2012-04-12\2012-04-12_011.xad

Created: 4/12/2012 4:22:31 PM
Modified: 4/12/2012 4:49:59 PM

Electropherogram Summary Continued ...



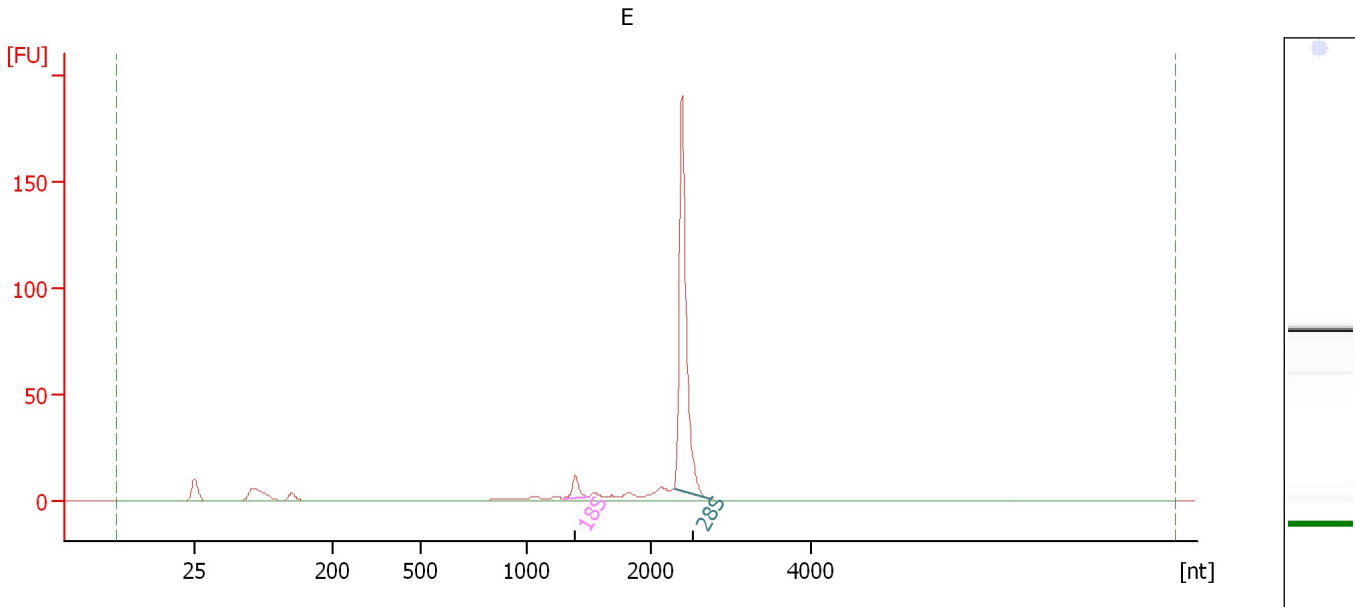
Overall Results for sample 8 : #2

RNA Area:	635.1	RNA Integrity Number (RIN):	2.2 (B.02.08)
RNA Concentration:	684 ng/ μ l	Result Flagging Color:	
rRNA Ratio [28s / 18s]:	0.0	Result Flagging Label:	RIN: 2.20

Assay Class: Eukaryote Total RNA Nano
 Data Path: C:\...ents and Settings\Bioanalyzer\2012-04-12\2012-04-12_011.xad

Created: 4/12/2012 4:22:31 PM
 Modified: 4/12/2012 4:49:59 PM

Electropherogram Summary Continued ...



Overall Results for sample 9 : E

RNA Area:	267.2	RNA Integrity Number (RIN):	7.5 (B.02.08, Anomaly Threshold(s) manually adapted)
RNA Concentration:	288 ng/μl	Result Flagging Color:	
rRNA Ratio [28s / 18s]:	17.9	Result Flagging Label:	RIN: 7.50

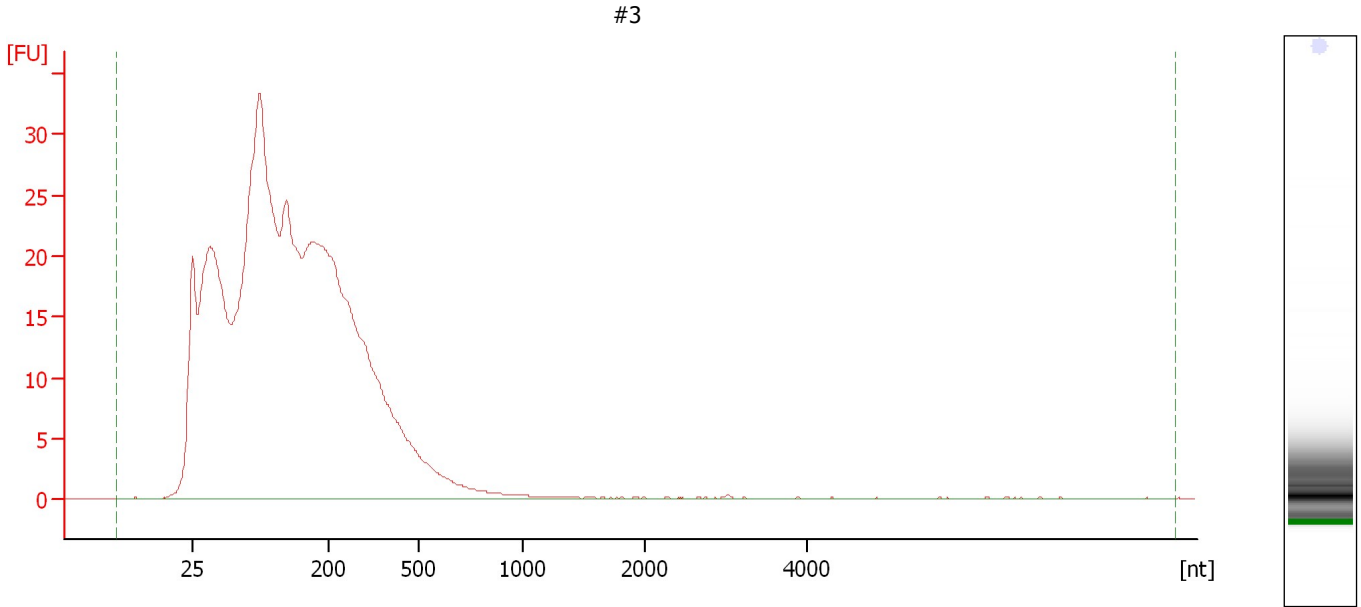
Fragment table for sample 9 : E

Name	Start Size [nt]	End Size [nt]	Area	% of total Area
18S	1,300	1,499	8.8	3.3
28S	2,307	2,745	158.5	59.3

Assay Class: Eukaryote Total RNA Nano
Data Path: C:\...ents and Settings\Bioanalyzer\2012-04-12\2012-04-12_011.xad

Created: 4/12/2012 4:22:31 PM
Modified: 4/12/2012 4:49:59 PM

Electropherogram Summary Continued ...



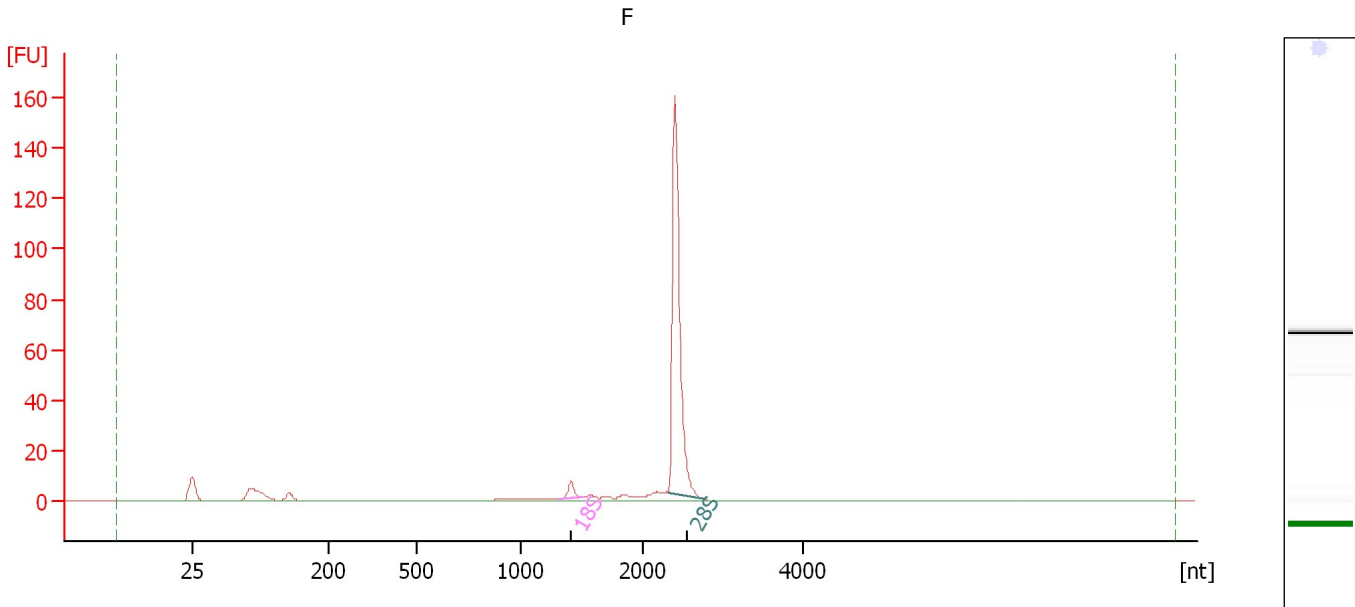
Overall Results for sample 10 : #3

RNA Area:	661.1	RNA Integrity Number (RIN):	2.3 (B.02.08)
RNA Concentration:	712 ng/ μ l	Result Flagging Color:	
rRNA Ratio [28s / 18s]:	0.0	Result Flagging Label:	RIN: 2.30

Assay Class: Eukaryote Total RNA Nano
 Data Path: C:\...ents and Settings\Bioanalyzer\2012-04-12\2012-04-12_011.xad

Created: 4/12/2012 4:22:31 PM
 Modified: 4/12/2012 4:49:59 PM

Electropherogram Summary Continued ...



Overall Results for sample 11 : F

RNA Area:	200.4	RNA Integrity Number (RIN):	7.4 (B.02.08, Anomaly Threshold(s) manually adapted)
RNA Concentration:	216 ng/μl	Result Flagging Color:	
rRNA Ratio [28s / 18s]:	23.2	Result Flagging Label:	RIN: 7.40

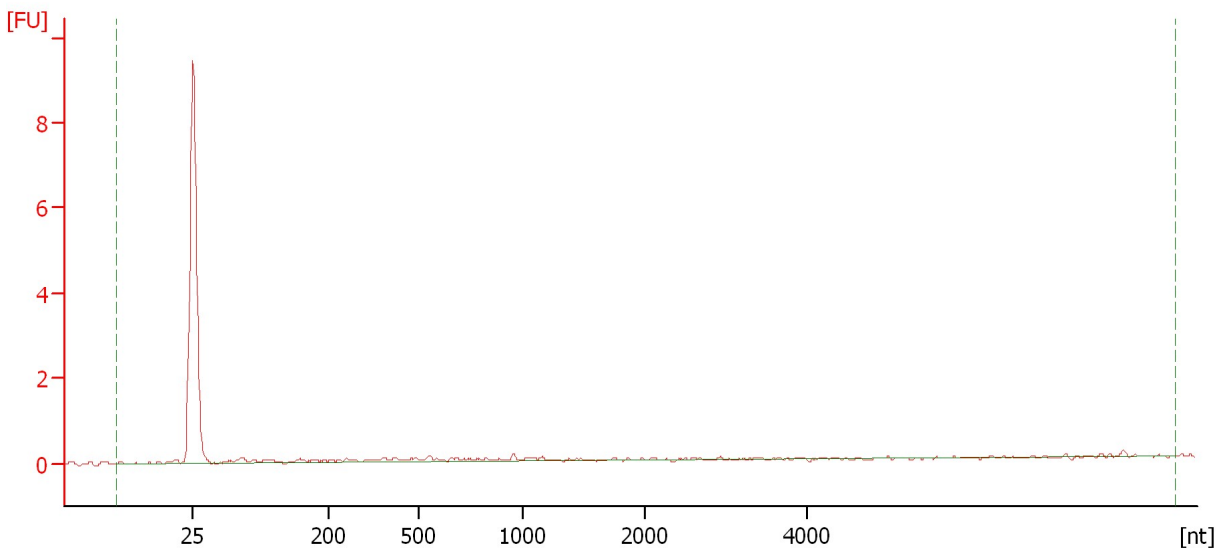
Fragment table for sample 11 : F

Name	Start Size [nt]	End Size [nt]	Area	% of total Area
18S	1,311	1,502	5.6	2.8
28S	2,306	2,773	130.1	64.9

Assay Class: Eukaryote Total RNA Nano
Data Path: C:\...ents and Settings\Bioanalyzer\2012-04-12\2012-04-12_011.xad

Created: 4/12/2012 4:22:31 PM
Modified: 4/12/2012 4:49:59 PM

Electropherogram Summary Continued ...



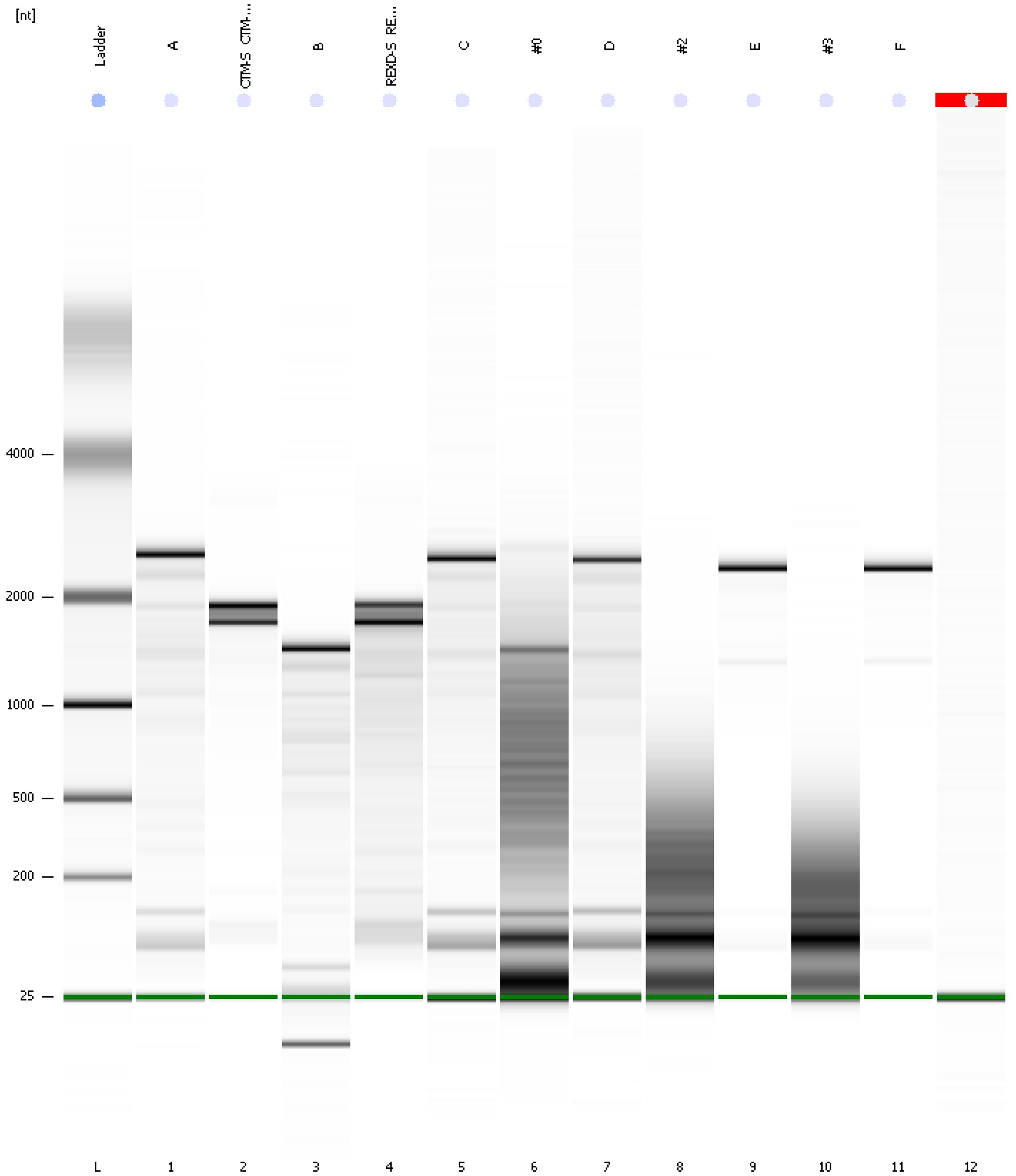
Overall Results for sample 12 :

RNA Area:	3.0	RNA Integrity Number (RIN):	N/A (B.02.08)
RNA Concentration:	3 ng/μl	Result Flagging Color:	
rRNA Ratio [28s / 18s]:	0.0	Result Flagging Label:	RIN N/A

Assay Class: Eukaryote Total RNA Nano
Data Path: C:\...ents and Settings\Bioanalyzer\2012-04-12\2012-04-12_011.xad

Created: 4/12/2012 4:22:31 PM
Modified: 4/12/2012 4:49:59 PM

Gel Image



Assay Class: Eukaryote Total RNA Nano
 Data Path: C:\...ents and Settings\Bioanalyzer\2012-04-12\2012-04-12_011.xad

Created: 4/12/2012 4:22:31 PM
 Modified: 4/12/2012 4:49:59 PM

Run Logbook

Description	Number	Source	Category	Sub Category	Time	Time Zone	User	Host
Run ended on port 1 (Number of wells acquired: 13)		Instrument	Run		4/12/2012 4:45:29 PM	(GMT --07:00) Pacific Standard Time	UC Davis	D8XSMGH1
Run started on port 1 (File: C:\Documents and Settings\Bioanalyzer\2012-04-12\2012-04-12_011.xad)		Instrument	Run		4/12/2012 4:22:32 PM	(GMT --07:00) Pacific Standard Time	UC Davis	D8XSMGH1
Product Number : G2938B		Instrument	Run		4/12/2012 4:22:32 PM	(GMT --07:00) Pacific Standard Time	UC Davis	D8XSMGH1
Name :		Instrument	Run		4/12/2012 4:22:32 PM	(GMT --07:00) Pacific Standard Time	UC Davis	D8XSMGH1
Vendor : Agilent Technologies		Instrument	Run		4/12/2012 4:22:32 PM	(GMT --07:00) Pacific Standard Time	UC Davis	D8XSMGH1
Serial# : DE13701086		Instrument	Run		4/12/2012 4:22:32 PM	(GMT --07:00) Pacific Standard Time	UC Davis	D8XSMGH1
Firmware : C.01.069		Instrument	Run		4/12/2012 4:22:32 PM	(GMT --07:00) Pacific Standard Time	UC Davis	D8XSMGH1
Cartridge : Electrode		Instrument	Run		4/12/2012 4:22:32 PM	(GMT --07:00) Pacific Standard Time	UC Davis	D8XSMGH1