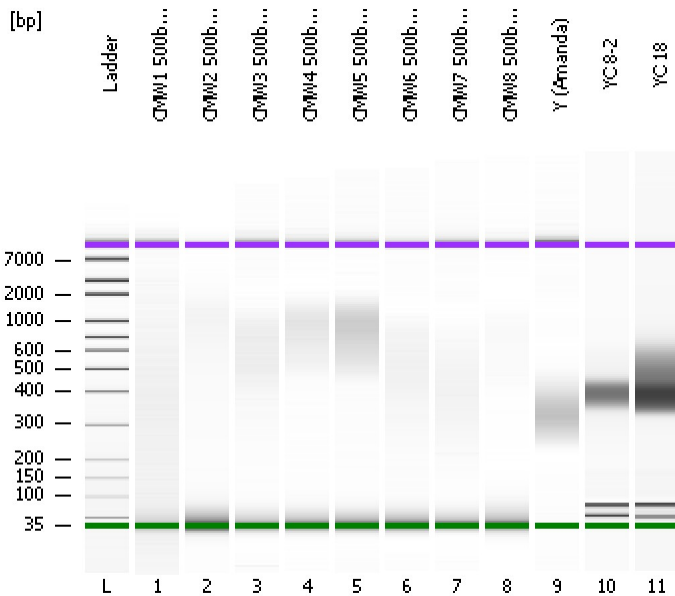


Assay Class: High Sensitivity DNA Assay
Data Path: C:\...ents and Settings\Bioanalyzer\2012-04-13\2012-04-13_001.xad

Created: 4/13/2012 9:07:52 AM
Modified: 4/13/2012 9:58:06 AM

Electrophoresis File Run Summary



Instrument Information:

Instrument Name: DE13701086 Firmware: C.01.069
Serial#: DE13701086 Type: G2938B

Assay Information:

Assay Origin Path: C:\Program Files\Agilent\2100 bioanalyzer\2100 expert\assays\dsDNA\High Sensitivity DNA.xsy
Assay Class: High Sensitivity DNA Assay
Version: 1.03
Assay Comments: Copyright © 2003-2010 Agilent Technologies

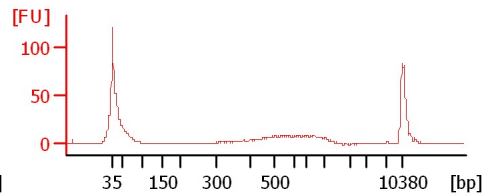
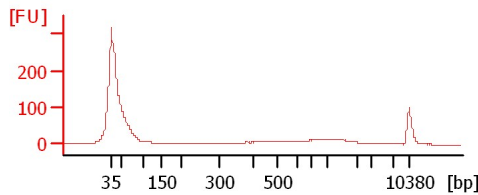
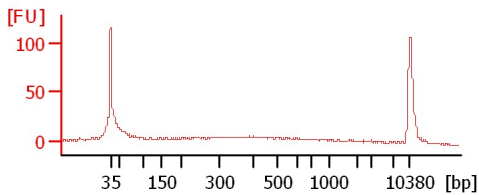
Chip Information:

Chip Lot #:
Reagent Kit Lot #:
Chip Comments:

CMW1 500bp 1:20

CMW2 500bp 1:20

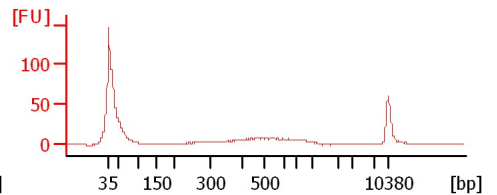
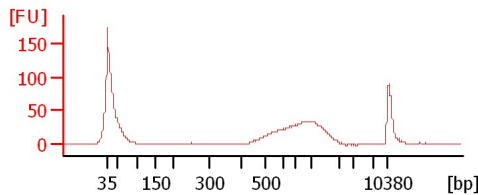
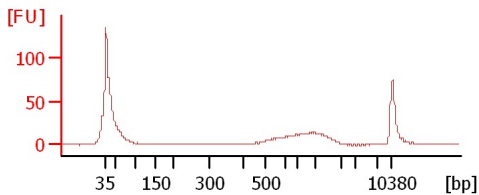
CMW3 500bp 1:20



CMW4 500bp 1:20

CMW5 500bp 1:20

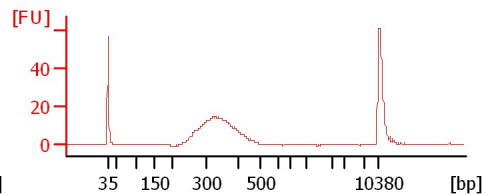
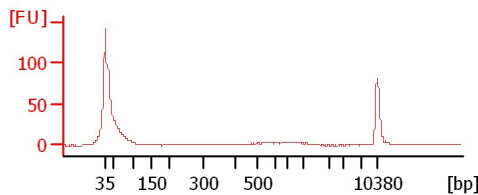
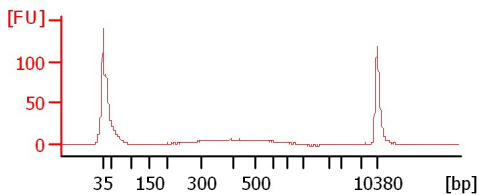
CMW6 500bp 1:20



CMW7 500bp 1:20

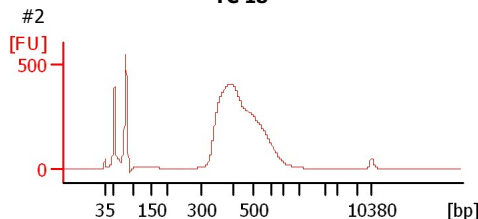
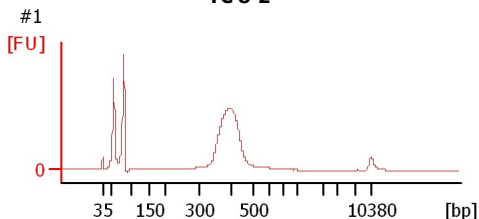
CMW8 500bp 1:20

Y (Amanda)



YC 8-2

YC 18



Assay Class: High Sensitivity DNA Assay
 Data Path: C:\...ents and Settings\Bioanalyzer\2012-04-13\2012-04-13_001.xad

Created: 4/13/2012 9:07:52 AM
 Modified: 4/13/2012 9:58:06 AM

Electrophoresis File Run Summary (Chip Summary)

Sample Name	Sample Comment	Rest. Digest	Status	Observation	Result Label	Result Color
CMW1 500bp 1:20		<input type="checkbox"/>	✓			
CMW2 500bp 1:20		<input type="checkbox"/>	✓			
CMW3 500bp 1:20		<input type="checkbox"/>	✓			
CMW4 500bp 1:20		<input type="checkbox"/>	✓			
CMW5 500bp 1:20		<input type="checkbox"/>	✓			
CMW6 500bp 1:20		<input type="checkbox"/>	✓			
CMW7 500bp 1:20		<input type="checkbox"/>	✓			
CMW8 500bp 1:20		<input type="checkbox"/>	✓			
Y (Amanda)		<input type="checkbox"/>	✓			
YC 8-2	#1	<input type="checkbox"/>	✓			
YC 18	#2	<input type="checkbox"/>	✓			
Ladder		<input type="checkbox"/>	✓			

Chip Lot #

Reagent Kit Lot #

Chip Comments :

Assay Class: High Sensitivity DNA Assay
Data Path: C:\...ents and Settings\Bioanalyzer\2012-04-13\2012-04-13_001.xad

Created: 4/13/2012 9:07:52 AM
Modified: 4/13/2012 9:58:06 AM

Electrophoresis Assay Details

General Analysis Settings

Number of Available Sample and Ladder Wells (Max.) : 12
Minimum Visible Range [s] : 32
Maximum Visible Range [s] : 138
Start Analysis Time Range [s] : 33
End Analysis Time Range [s] : 137.5
Ladder Concentration [pg/μl] : 1950
Uses Standard Area for Ladder Fragments
Lower Marker Concentration [pg/μl] : 125
Upper Marker Concentration [pg/μl] : 75
Used Upper Marker for Quantitation
Standard Curve Fit is Point to Point
Show Data Aligned to Lower and Upper Marker

Integrator Settings

Integration Start Time [s] : 33.05
Integration End Time [s] : 137
Slope Threshold : 0.8
Height Threshold [FU] : 5
Area Threshold : 0.1
Width Threshold [s] : 0.6
Baseline Plateau [s] : 0.5

Filter Settings

Filter Width [s] : 0.5
Polynomial Order : 4

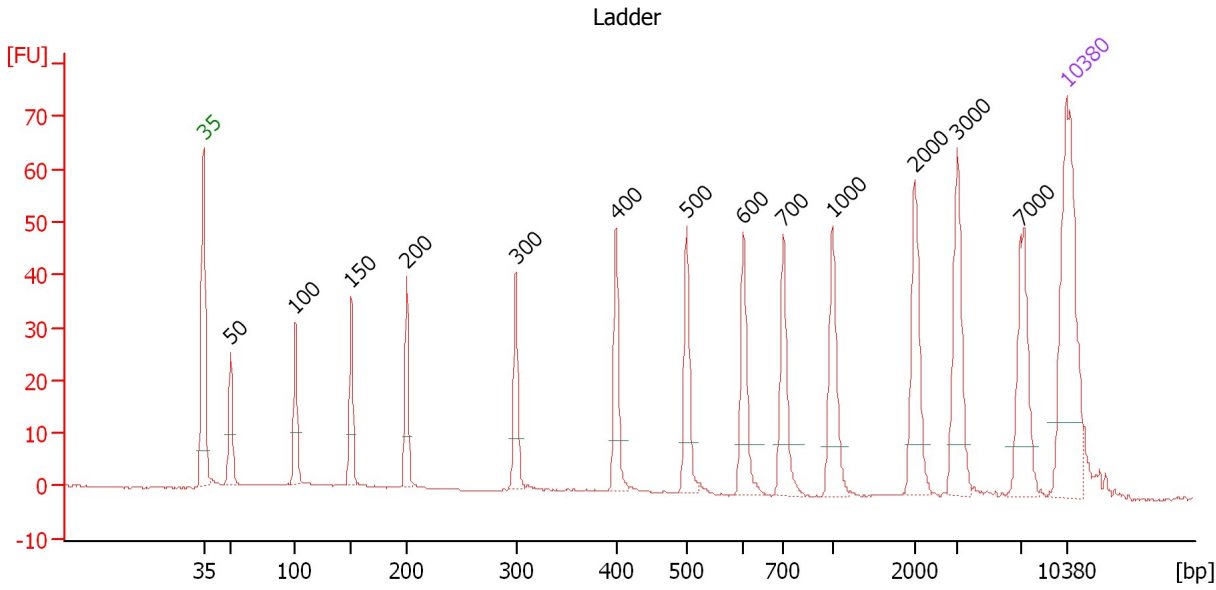
Ladder

Ladder Peak	Size	Area
1	35	160
2	50	210
3	100	208
4	150	221
5	200	242
6	300	270
7	400	305
8	500	306
9	600	336
10	700	321
11	1000	366
12	2000	413
13	3000	411
14	7000	400
15	10380	214

Assay Class: High Sensitivity DNA Assay
 Data Path: C:\...ents and Settings\Bioanalyzer\2012-04-13\2012-04-13_001.xad

Created: 4/13/2012 9:07:52 AM
 Modified: 4/13/2012 9:58:06 AM

Electropherogram Summary



Overall Results for Ladder

Noise: 0.2

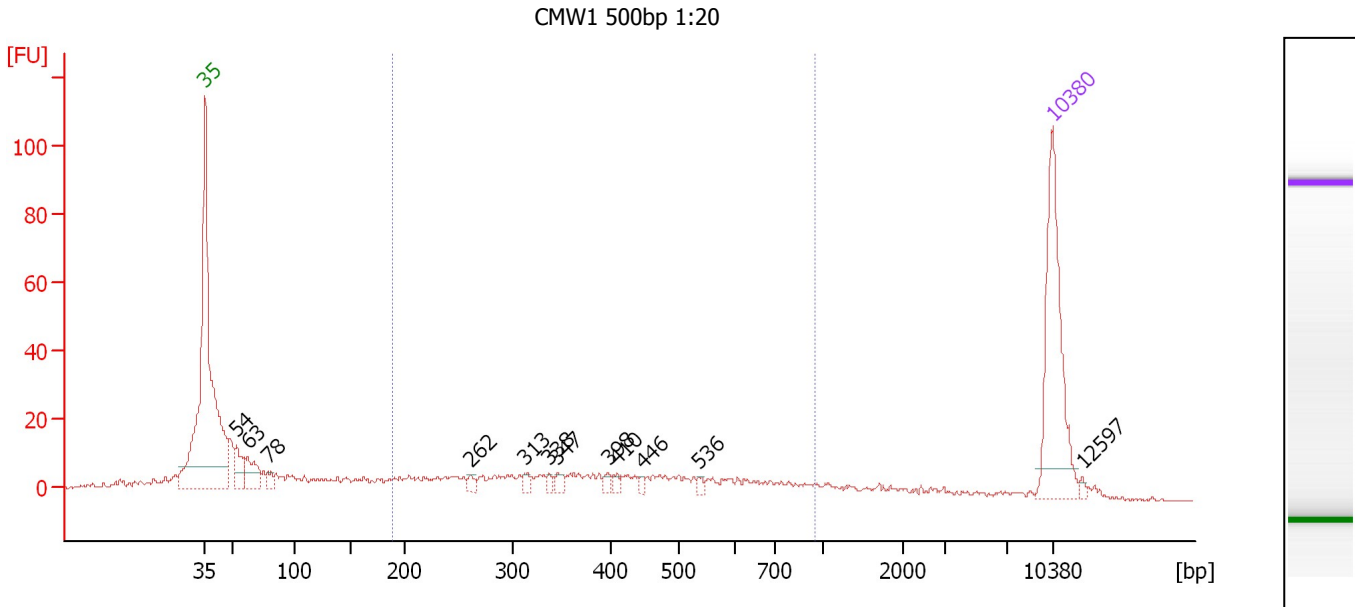
Peak table for Ladder

Peak	Size [bp]	Conc. [pg/μl]	Molarity [pmol/l]	Observations
1	35	125.00	5,411.3	Lower Marker
2	50	150.00	4,545.5	Ladder Peak
3	100	150.00	2,272.7	Ladder Peak
4	150	150.00	1,515.2	Ladder Peak
5	200	150.00	1,136.4	Ladder Peak
6	300	150.00	757.6	Ladder Peak
7	400	150.00	568.2	Ladder Peak
8	500	150.00	454.5	Ladder Peak
9	600	150.00	378.8	Ladder Peak
10	700	150.00	324.7	Ladder Peak
11	1,000	150.00	227.3	Ladder Peak
12	2,000	150.00	113.6	Ladder Peak
13	3,000	150.00	75.8	Ladder Peak
14	7,000	150.00	32.5	Ladder Peak
15	10,380	75.00	10.9	Upper Marker

Assay Class: High Sensitivity DNA Assay
 Data Path: C:\...ents and Settings\Bioanalyzer\2012-04-13\2012-04-13_001.xad

Created: 4/13/2012 9:07:52 AM
 Modified: 4/13/2012 9:58:06 AM

Electropherogram Summary Continued ...



Overall Results for sample 1 : CMW1 500bp 1:20

Number of peaks found: 12 Corr. Area 1: 213.8
 Noise: 0.3

Peak table for sample 1 : CMW1 500bp 1:20

Peak	Size [bp]	Conc. [pg/μl]	Molarity [pmol/l]	Observations
1	35	125.00	5,411.3	Lower Marker
2	54	24.50	690.5	
3	63	26.08	631.3	
4	78	6.80	131.9	
5	262	4.56	26.3	
6	313	4.73	22.9	
7	338	3.59	16.1	
8	347	5.80	25.4	
9	398	4.07	15.5	
10	410	4.18	15.5	
11	446	2.90	9.8	
12	536	2.49	7.0	
13	10,380	75.00	10.9	Upper Marker
14	12,597	0.00	0.0	

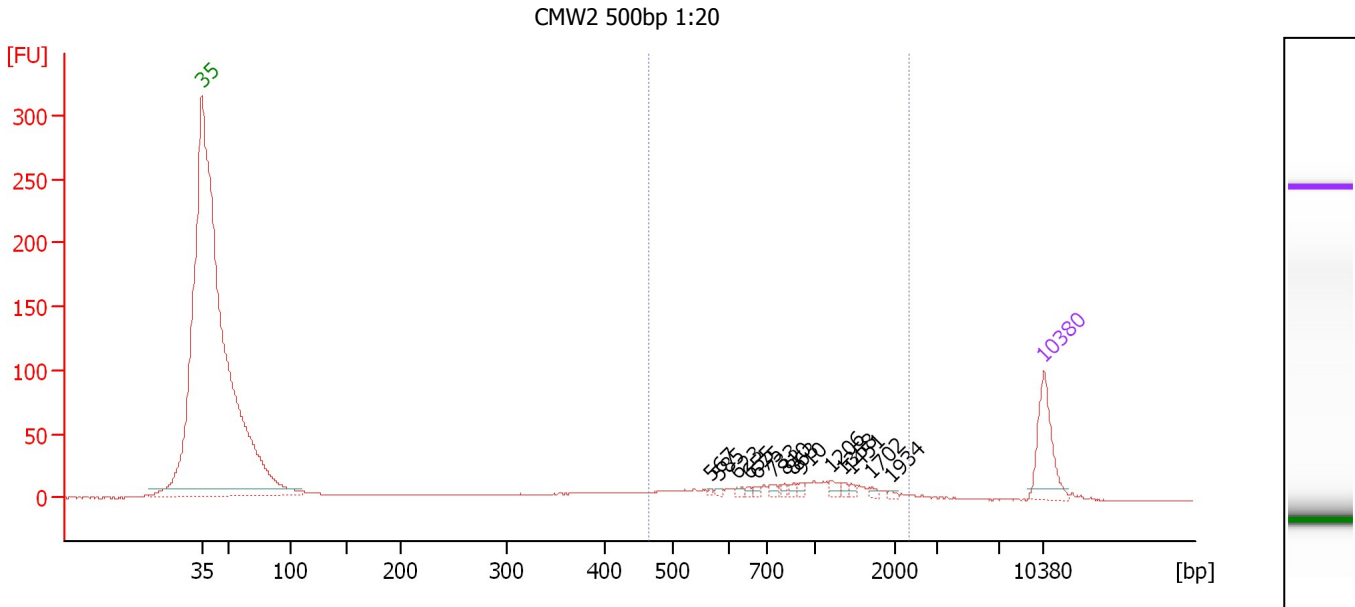
Region table for sample 1 : CMW1 500bp 1:20

From [bp]	Molarity [pmol/l]	Average Size [bp]	Conc. [pg/μl]	To [bp]	Corr. Area	% of Total	Size distribution in CV [%]	Color
189	784.7	428	178.07	950	213.8	50	39.6	Blue

Assay Class: High Sensitivity DNA Assay
 Data Path: C:\...ents and Settings\Bioanalyzer\2012-04-13\2012-04-13_001.xad

Created: 4/13/2012 9:07:52 AM
 Modified: 4/13/2012 9:58:06 AM

Electropherogram Summary Continued ...



Overall Results for sample 2 : CMW2 500bp 1:20

Number of peaks found: 14 Corr. Area 1: 234.6
 Noise: 0.2

Peak table for sample 2 : CMW2 500bp 1:20

Peak	Size [bp]	Conc. [pg/µl]	Molarity [pmol/l]	Observations
1	35	125.00	5,411.3	Lower Marker
2	567	2.64	7.1	
3	585	2.96	7.7	
4	623	4.65	11.3	
5	655	3.64	8.4	
6	675	4.30	9.7	
7	733	7.08	14.6	
8	810	5.05	9.5	
9	863	5.65	9.9	
10	910	5.01	8.3	
11	1,206	9.14	11.5	
12	1,358	4.63	5.2	
13	1,451	4.86	5.1	
14	1,702	4.09	3.6	
15	1,934	2.87	2.3	
16	10,380	75.00	10.9	Upper Marker

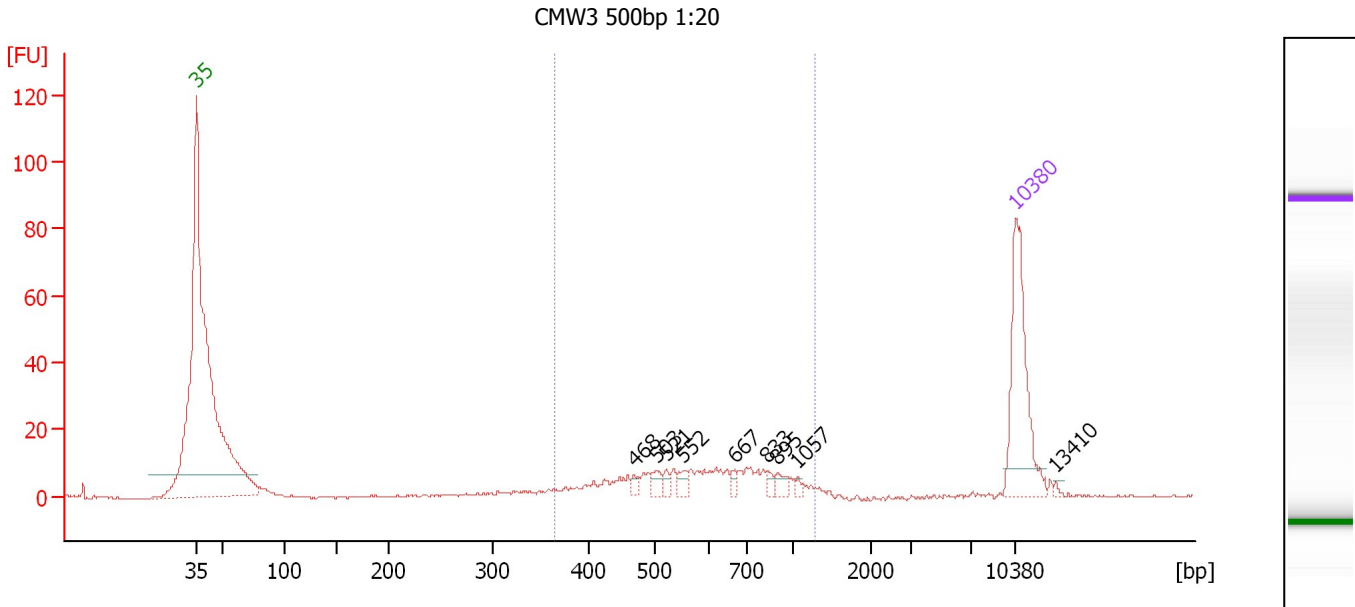
Region table for sample 2 : CMW2 500bp 1:20

From [bp]	Molarity [pmol/l]	Average Size [bp]	Conc. [pg/µl]	To [bp]	Corr. Area	% of Total	Size distribution in CV [%]	Color
463	339.6	991	176.30	2,342	234.6	55	45.7	Blue

Assay Class: High Sensitivity DNA Assay
 Data Path: C:\...ents and Settings\Bioanalyzer\2012-04-13\2012-04-13_001.xad

Created: 4/13/2012 9:07:52 AM
 Modified: 4/13/2012 9:58:06 AM

Electropherogram Summary Continued ...



Overall Results for sample 3 : CMW3 500bp 1:20

Number of peaks found: 9 Corr. Area 1: 147.0
 Noise: 0.3

Peak table for sample 3 : CMW3 500bp 1:20

Peak	Size [bp]	Conc. [pg/μl]	Molarity [pmol/l]	Observations
1	35	125.00	5,411.3	Lower Marker
2	468	4.99	16.1	
3	503	7.62	22.9	
4	521	5.23	15.2	
5	552	7.78	21.4	
6	667	4.61	10.5	
7	833	4.23	7.7	
8	895	7.17	12.1	
9	1,057	2.34	3.3	
10	10,380	75.00	10.9	Upper Marker
11	13,410	0.00	0.0	

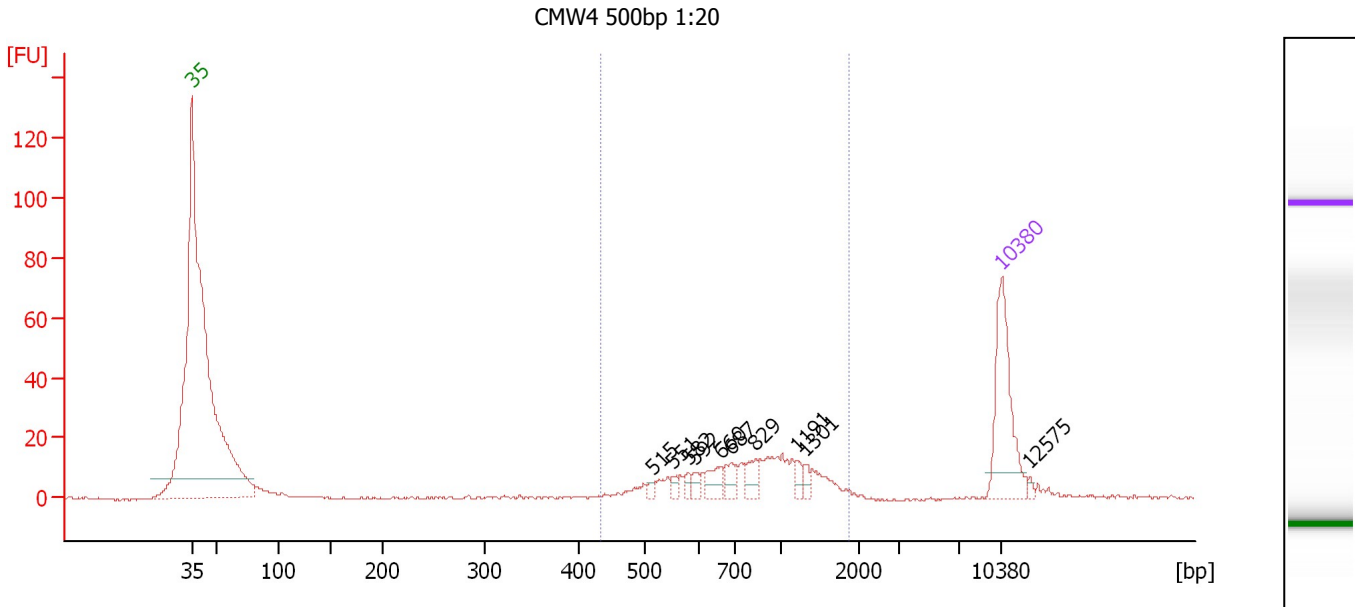
Region table for sample 3 : CMW3 500bp 1:20

From [bp]	Molarity [pmol/l]	Average Size [bp]	Conc. [pg/μl]	To [bp]	Corr. Area	% of Total	Size distribution in CV [%]	Color
365	353.7	631	133.03	1,268	147.0	86	29.7	Blue

Assay Class: High Sensitivity DNA Assay
 Data Path: C:\...ents and Settings\Bioanalyzer\2012-04-13\2012-04-13_001.xad

Created: 4/13/2012 9:07:52 AM
 Modified: 4/13/2012 9:58:06 AM

Electropherogram Summary Continued ...



Overall Results for sample 4 : CMW4 500bp 1:20

Number of peaks found: 10 Corr. Area 1: 195.4
 Noise: 0.3

Peak table for sample 4 : CMW4 500bp 1:20

Peak	Size [bp]	Conc. [pg/μl]	Molarity [pmol/l]	Observations
1	35	125.00	5,411.3	Lower Marker
2	515	5.30	15.6	
3	551	6.12	16.8	
4	582	6.12	15.9	
5	592	7.15	18.3	
6	660	16.58	38.0	
7	687	14.40	31.7	
8	829	14.11	25.8	
9	1,191	7.35	9.3	
10	1,301	6.42	7.5	
11	10,380	75.00	10.9	Upper Marker
12	12,575	0.00	0.0	

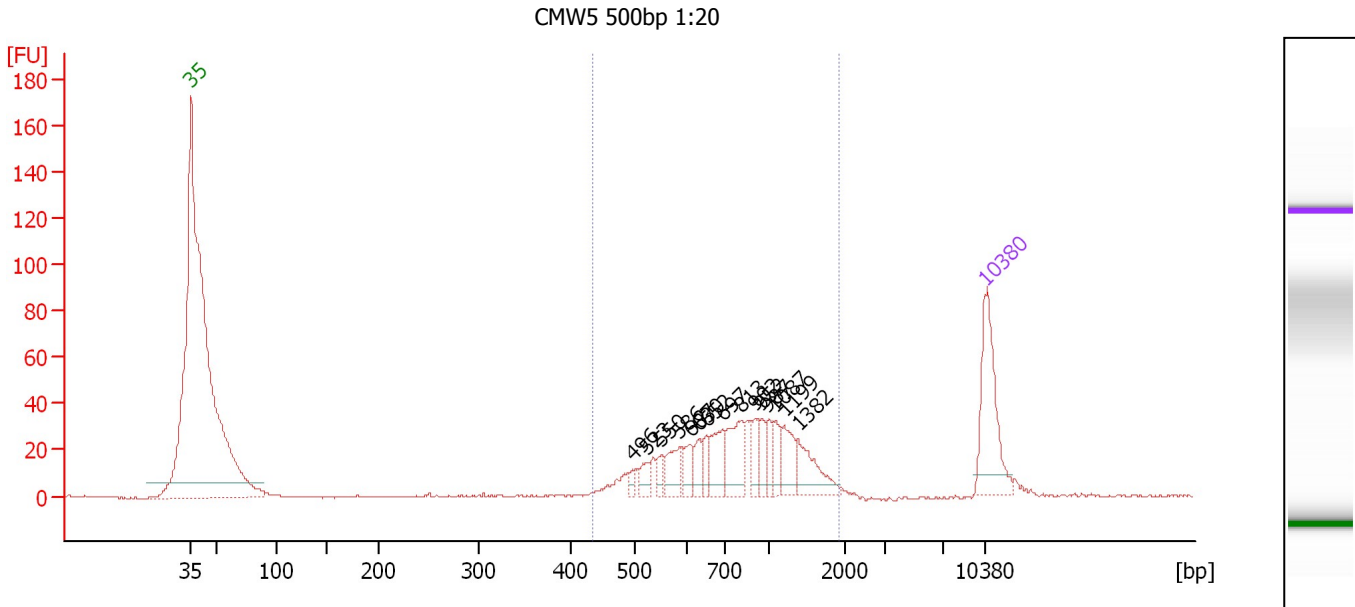
Region table for sample 4 : CMW4 500bp 1:20

From [bp]	Molarity [pmol/l]	Average Size [bp]	Conc. [pg/μl]	To [bp]	Corr. Area	% of Total	Size distribution in CV [%]	Color
434	370.6	882	184.19	1,875	195.4	82	38.1	Blue

Assay Class: High Sensitivity DNA Assay
 Data Path: C:\...ents and Settings\Bioanalyzer\2012-04-13\2012-04-13_001.xad

Created: 4/13/2012 9:07:52 AM
 Modified: 4/13/2012 9:58:06 AM

Electropherogram Summary Continued ...



Overall Results for sample 5 : CMW5 500bp 1:20

Number of peaks found: 15 Corr. Area 1: 487.2
 Noise: 0.3

Peak table for sample 5 : CMW5 500bp 1:20

Peak	Size [bp]	Conc. [pg/µl]	Molarity [pmol/l]	Observations
1	35	125.00	5,411.3	Lower Marker
2	496	8.10	24.7	
3	523	14.80	42.9	
4	550	11.79	32.5	
5	586	28.92	74.8	
6	607	17.83	44.5	
7	630	17.16	41.3	
8	652	15.08	35.0	
9	697	39.03	84.8	
10	813	47.32	88.2	
11	902	18.85	31.7	
12	952	16.99	27.0	
13	987	16.52	25.4	
14	1,087	17.80	24.8	
15	1,199	27.73	35.0	
16	1,382	37.69	41.3	
17	10,380	75.00	10.9	Upper Marker

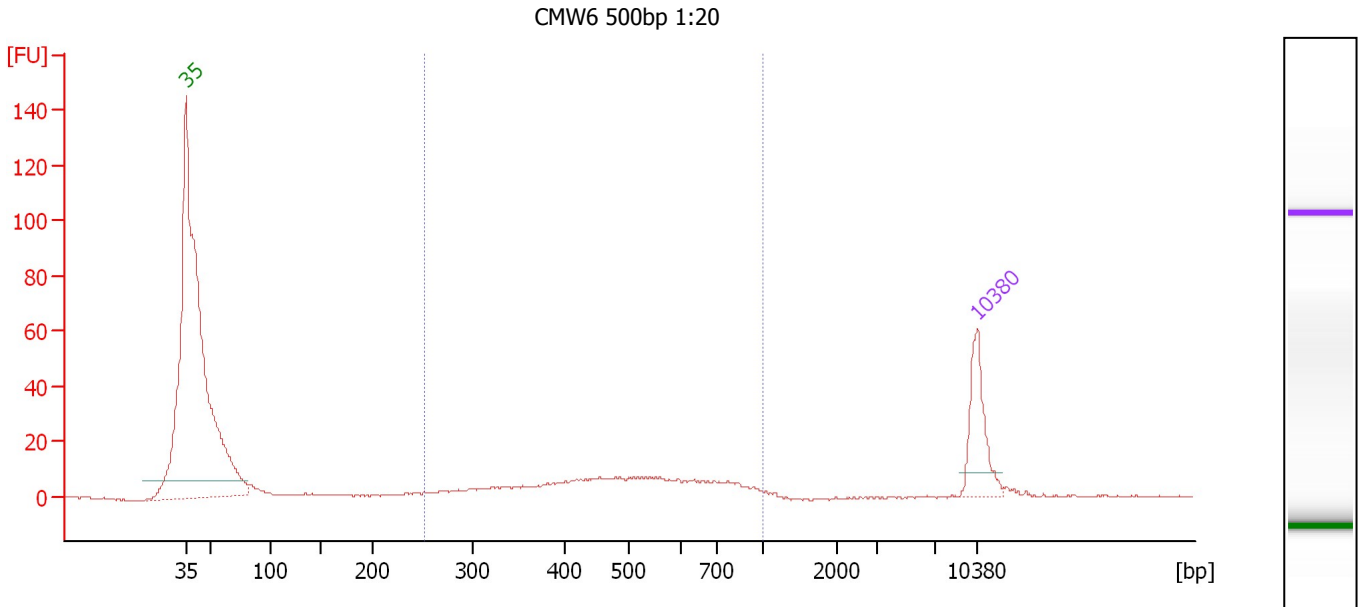
Region table for sample 5 : CMW5 500bp 1:20

From [bp]	Molarity [pmol/l]	Average Size [bp]	Conc. [pg/µl]	To [bp]	Corr. Area	% of Total	Size distribution in CV [%]	Color
436	804.1	878	397.22	1,929	487.2	95	38.6	Blue

Assay Class: High Sensitivity DNA Assay
 Data Path: C:\...ents and Settings\Bioanalyzer\2012-04-13\2012-04-13_001.xad

Created: 4/13/2012 9:07:52 AM
 Modified: 4/13/2012 9:58:06 AM

Electropherogram Summary Continued ...



Overall Results for sample 6 : CMW6 500bp 1:20

Number of peaks found: 0 Corr. Area 1: 180.0
 Noise: 0.3

Peak table for sample 6 : CMW6 500bp 1:20

Peak	Size [bp]	Conc. [pg/μl]	Molarity [pmol/l]	Observations
1	35	125.00	5,411.3	Lower Marker
2	10,380	75.00	10.9	Upper Marker

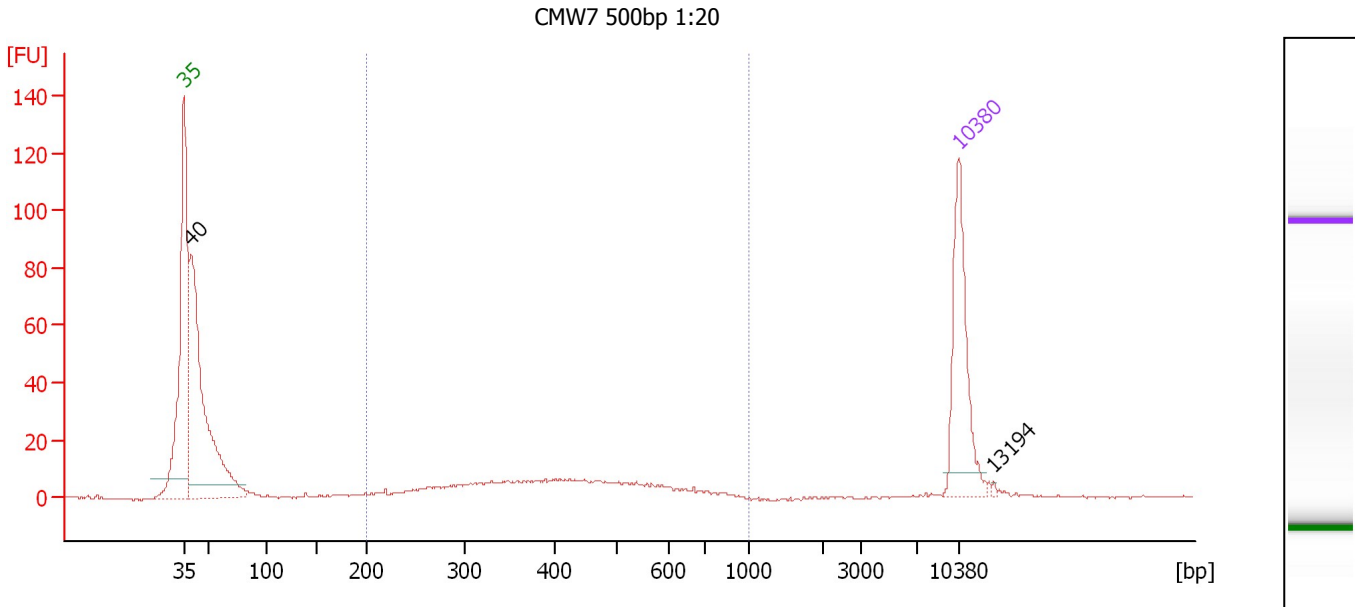
Region table for sample 6 : CMW6 500bp 1:20

From [bp]	Molarity [pmol/l]	Average Size [bp]	Conc. [pg/μl]	To [bp]	Corr. Area	% of Total	Size distribution in CV [%]	Color
252	801.5	509	234.70	1,000	180.0	81	31.6	Blue

Assay Class: High Sensitivity DNA Assay
 Data Path: C:\...ents and Settings\Bioanalyzer\2012-04-13\2012-04-13_001.xad

Created: 4/13/2012 9:07:52 AM
 Modified: 4/13/2012 9:58:06 AM

Electropherogram Summary Continued ...



Overall Results for sample 7 : CMW7 500bp 1:20

Number of peaks found: 2 Corr. Area 1: 177.5
 Noise: 0.3

Peak table for sample 7 : CMW7 500bp 1:20

Peak	Size [bp]	Conc. [pg/μl]	Molarity [pmol/l]	Observations
1	35	125.00	5,411.3	Lower Marker
2	40	343.19	13,134.8	
3	10,380	75.00	10.9	Upper Marker
4	13,194	0.00	0.0	

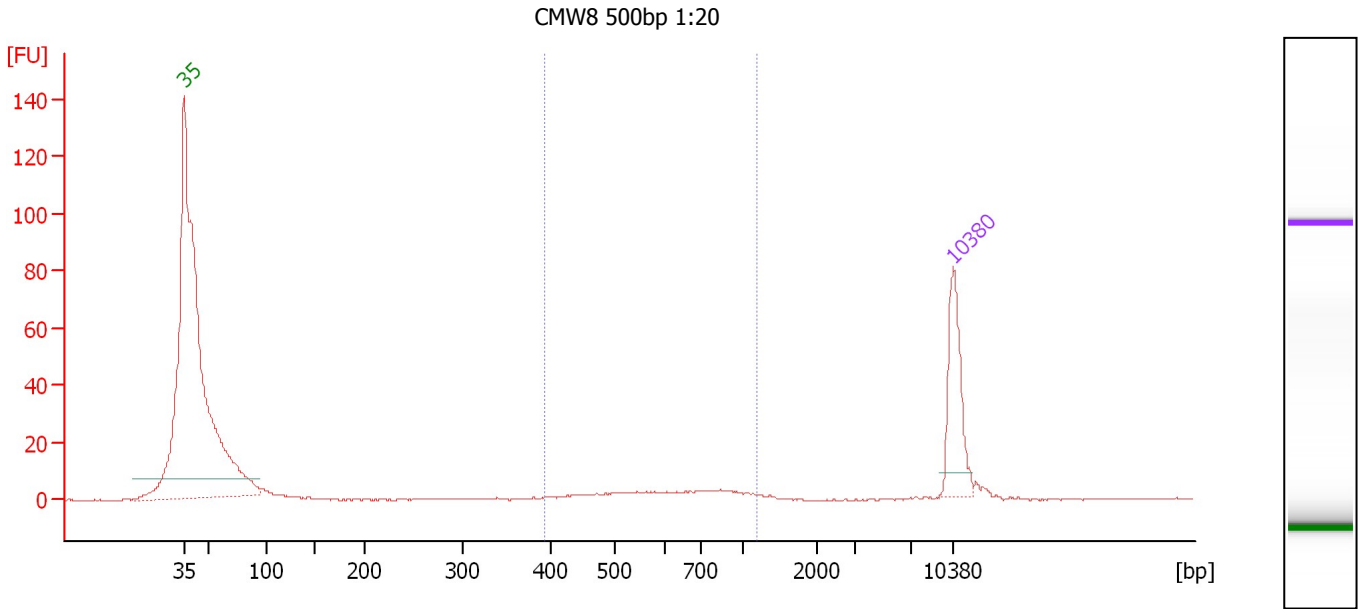
Region table for sample 7 : CMW7 500bp 1:20

From [bp]	Molarity [pmol/l]	Average Size [bp]	Conc. [pg/μl]	To [bp]	Corr. Area	% of Total	Size distribution in CV [%]	Color
200	542.3	423	132.17	1,000	177.5	35	31.1	Blue

Assay Class: High Sensitivity DNA Assay
 Data Path: C:\...ents and Settings\Bioanalyzer\2012-04-13\2012-04-13_001.xad

Created: 4/13/2012 9:07:52 AM
 Modified: 4/13/2012 9:58:06 AM

Electropherogram Summary Continued ...



Overall Results for sample 8 : CMW8 500bp 1:20

Number of peaks found: 0 Corr. Area 1: 52.7
 Noise: 0.2

Peak table for sample 8 : CMW8 500bp 1:20

Peak	Size [bp]	Conc. [pg/μl]	Molarity [pmol/l]	Observations
1	35	125.00	5,411.3	Lower Marker
2	10,380	75.00	10.9	Upper Marker

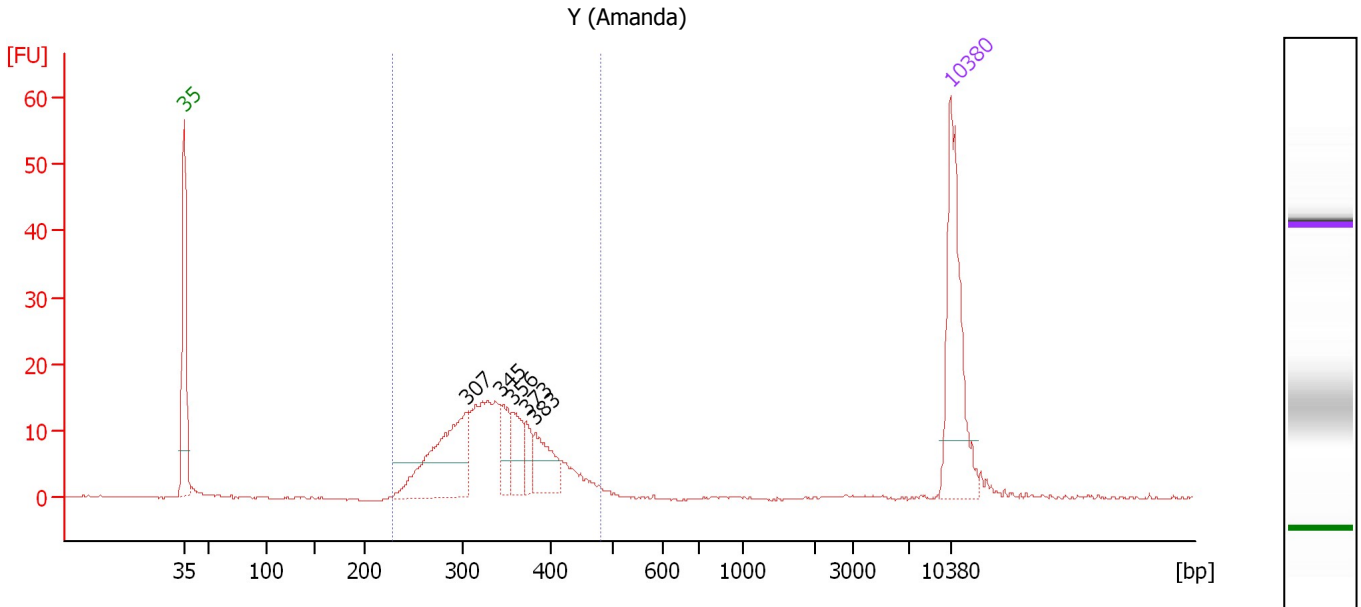
Region table for sample 8 : CMW8 500bp 1:20

From [bp]	Molarity [pmol/l]	Average Size [bp]	Conc. [pg/μl]	To [bp]	Corr. Area	% of Total	Size distribution in CV [%]	Color
393	138.0	658	54.45	1,189	52.7	57	28.3	Blue

Assay Class: High Sensitivity DNA Assay
 Data Path: C:\...ents and Settings\Bioanalyzer\2012-04-13\2012-04-13_001.xad

Created: 4/13/2012 9:07:52 AM
 Modified: 4/13/2012 9:58:06 AM

Electropherogram Summary Continued ...



Overall Results for sample 9 : Y (Amanda)

Number of peaks found: 5 Corr. Area 1: 218.1
 Noise: 0.1

Peak table for sample 9 : Y (Amanda)

Peak	Size [bp]	Conc. [pg/μl]	Molarity [pmol/l]	Observations
1	35	125.00	5,411.3	Lower Marker
2	307	105.80	523.0	
3	345	23.58	103.6	
4	356	27.44	116.7	
5	373	15.12	61.4	
6	383	32.08	127.0	
7	10,380	75.00	10.9	Upper Marker

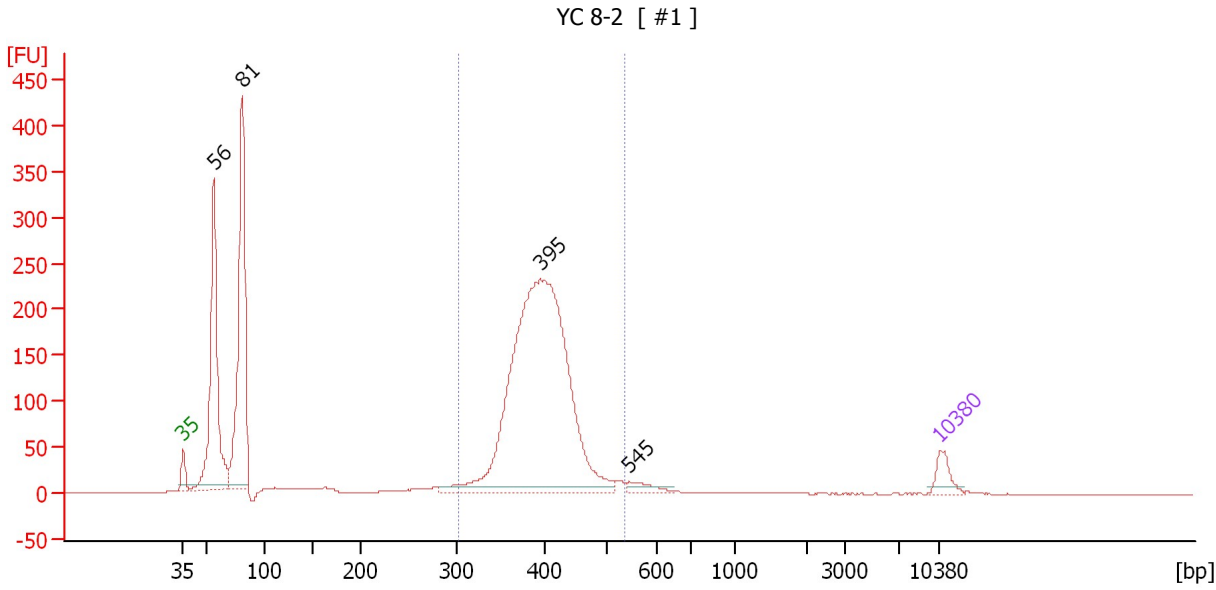
Region table for sample 9 : Y (Amanda)

From [bp]	Molarity [pmol/l]	Average Size [bp]	Conc. [pg/μl]	To [bp]	Corr. Area	% of Total	Size distribution in CV [%]	Color
229	1,511.0	338	327.64	479	218.1	94	15.0	Blue

Assay Class: High Sensitivity DNA Assay
 Data Path: C:\...ents and Settings\Bioanalyzer\2012-04-13\2012-04-13_001.xad

Created: 4/13/2012 9:07:52 AM
 Modified: 4/13/2012 9:58:06 AM

Electropherogram Summary Continued ...



Overall Results for sample 10 : YC 8-2

Number of peaks found: 4 Corr. Area 1: 1,934.9
 Noise: 0.2

Peak table for sample 10 : YC 8-2

Peak	Size [bp]	Conc. [pg/μl]	Molarity [pmol/l]	Observations
1	35	125.00	5,411.3	Lower Marker
2	56	1,418.05	38,505.1	
3	81	1,591.54	29,849.2	
4	395	3,254.57	12,486.8	
5	545	59.05	164.1	
6	10,380	75.00	10.9	Upper Marker

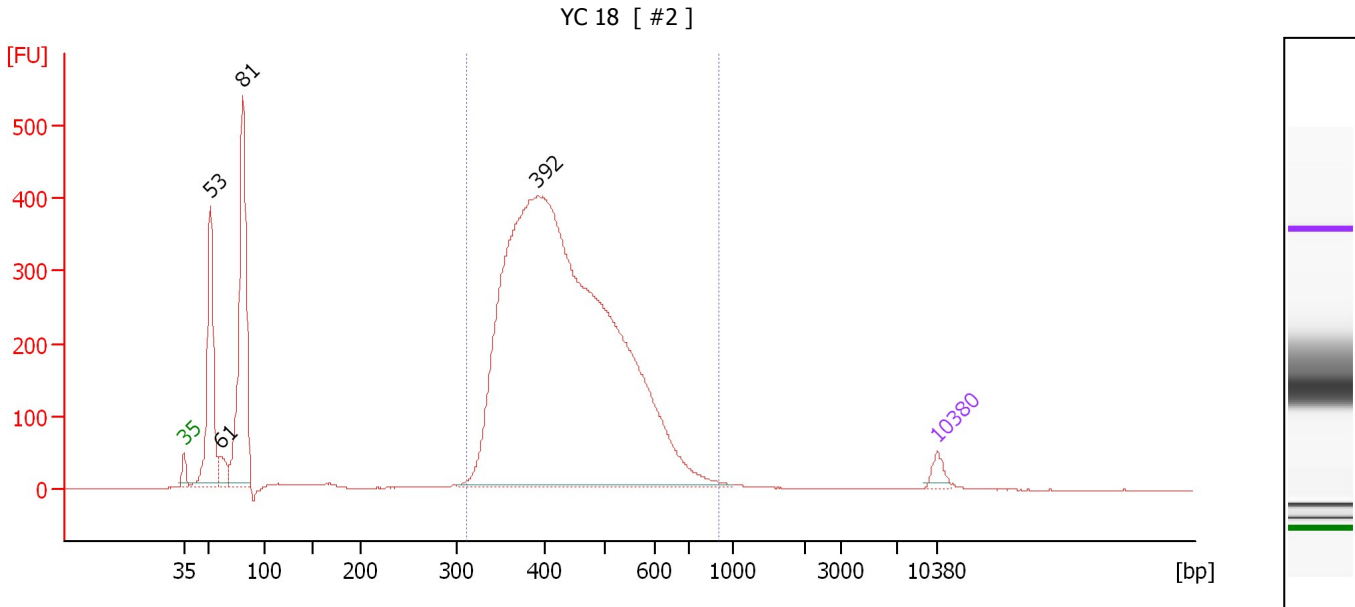
Region table for sample 10 : YC 8-2

From [bp]	Molarity [pmol/l]	Average Size [bp]	Conc. [pg/μl]	To [bp]	Corr. Area	% of Total	Size distribution in CV [%]	Color
303	12,771.5	399	3,334.45	535	1,934.9	57	9.2	Blue

Assay Class: High Sensitivity DNA Assay
 Data Path: C:\...ents and Settings\Bioanalyzer\2012-04-13\2012-04-13_001.xad

Created: 4/13/2012 9:07:52 AM
 Modified: 4/13/2012 9:58:06 AM

Electropherogram Summary Continued ...



Overall Results for sample 11 : YC 18

Number of peaks found: 4 Corr. Area 1: 6,089.7
 Noise: 0.1

Peak table for sample 11 : YC 18

Peak	Size [bp]	Conc. [pg/μl]	Molarity [pmol/l]	Observations
1	35	125.00	5,411.3	Lower Marker
2	53	1,509.70	43,488.1	
3	61	192.85	4,780.7	
4	81	2,305.03	43,113.1	
5	392	11,145.16	43,037.3	
6	10,380	75.00	10.9	Upper Marker

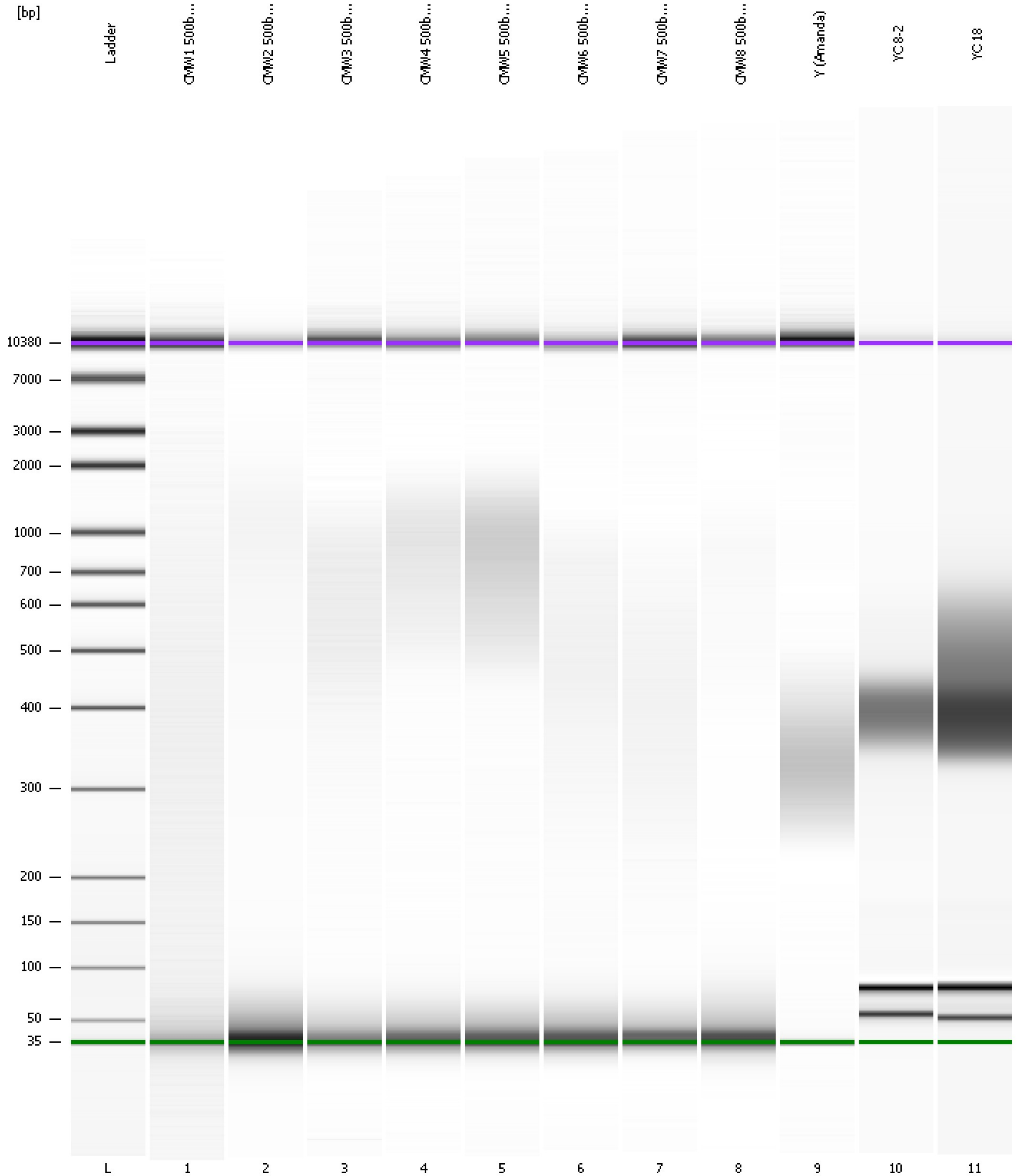
Region table for sample 11 : YC 18

From [bp]	Molarity [pmol/l]	Average Size [bp]	Conc. [pg/μl]	To [bp]	Corr. Area	% of Total	Size distribution in CV [%]	Color
311	38,487.5	446	10,835.81	900	6,089.7	78	19.4	Blue

Assay Class: High Sensitivity DNA Assay
Data Path: C:\...ents and Settings\Bioanalyzer\2012-04-13\2012-04-13_001.xad

Created: 4/13/2012 9:07:52 AM
Modified: 4/13/2012 9:58:06 AM

Gel Image



Assay Class: High Sensitivity DNA Assay
 Data Path: C:\...ents and Settings\Bioanalyzer\2012-04-13\2012-04-13_001.xad

Created: 4/13/2012 9:07:52 AM
 Modified: 4/13/2012 9:58:06 AM

Run Logbook

Description	Number	Source	Category	Sub Category	Time	Time Zone	User	Host
Run ended on port 1 (Number of wells acquired: 12)		Instrument	Run		4/13/2012 9:49:11 AM	(GMT --07:00) Pacific Standard Time	UC Davis	D8XSMGH1
Run started on port 1 (File: C:\Documents and Settings\Bioanalyzer\2012-04-13\2012-04-13_001.xad)		Instrument	Run		4/13/2012 9:07:57 AM	(GMT --07:00) Pacific Standard Time	UC Davis	D8XSMGH1
Product Number : G2938B		Instrument	Run		4/13/2012 9:07:57 AM	(GMT --07:00) Pacific Standard Time	UC Davis	D8XSMGH1
Name :		Instrument	Run		4/13/2012 9:07:57 AM	(GMT --07:00) Pacific Standard Time	UC Davis	D8XSMGH1
Vendor : Agilent Technologies		Instrument	Run		4/13/2012 9:07:57 AM	(GMT --07:00) Pacific Standard Time	UC Davis	D8XSMGH1
Serial# : DE13701086		Instrument	Run		4/13/2012 9:07:57 AM	(GMT --07:00) Pacific Standard Time	UC Davis	D8XSMGH1
Firmware : C.01.069		Instrument	Run		4/13/2012 9:07:57 AM	(GMT --07:00) Pacific Standard Time	UC Davis	D8XSMGH1
Cartridge : Electrode		Instrument	Run		4/13/2012 9:07:57 AM	(GMT --07:00) Pacific Standard Time	UC Davis	D8XSMGH1