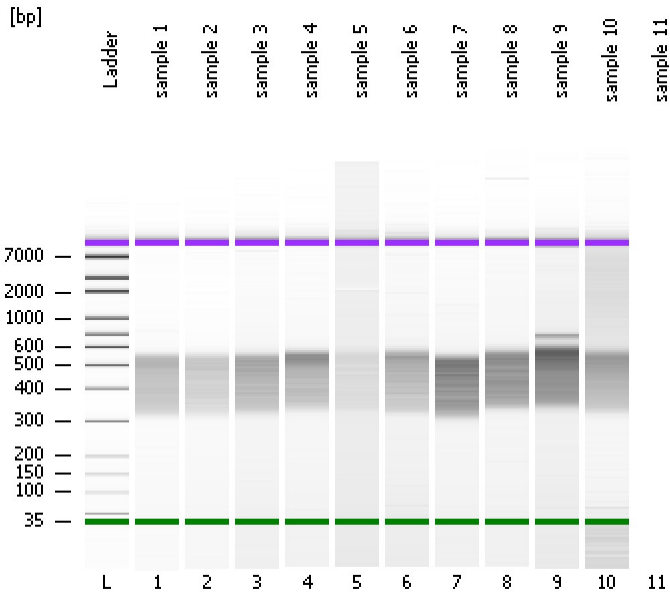


Assay Class: High Sensitivity DNA Assay
Data Path: C:\...ents and Settings\Bioanalyzer\2012-04-13\2012-04-13_002.xad

Created: 4/13/2012 10:07:58 AM
Modified: 4/13/2012 10:47:34 AM

Electrophoresis File Run Summary



Instrument Information:

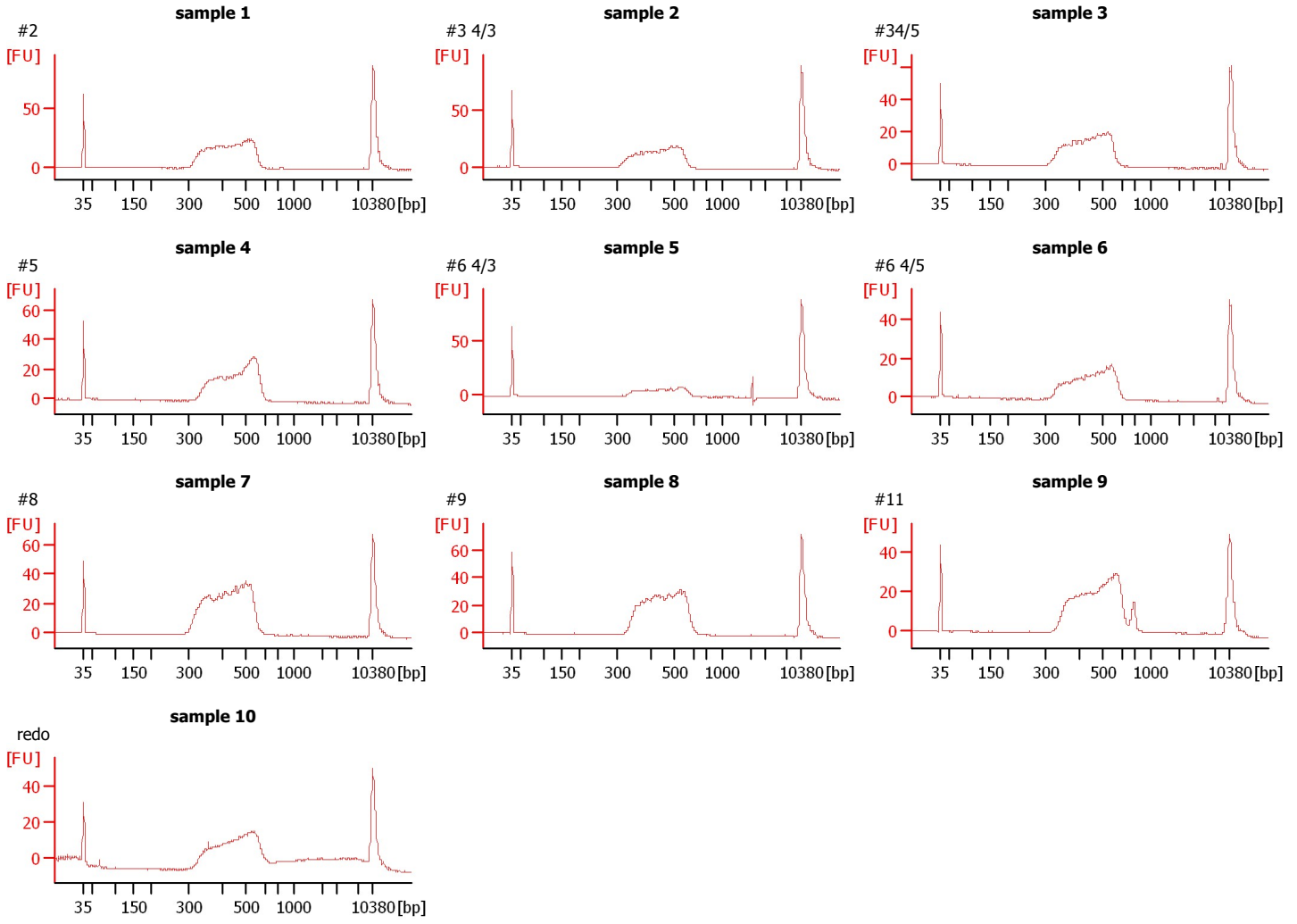
Instrument Name: DE13701086 Firmware: C.01.069
Serial#: DE13701086 Type: G2938B

Assay Information:

Assay Origin Path: C:\Program Files\Agilent\2100 bioanalyzer\2100 expert\assays\dsDNA\High Sensitivity DNA.xsy
Assay Class: High Sensitivity DNA Assay
Version: 1.03
Assay Comments: Copyright © 2003-2010 Agilent Technologies

Chip Information:

Chip Lot #:
Reagent Kit Lot #:
Chip Comments:



Assay Class: High Sensitivity DNA Assay
 Data Path: C:\...ents and Settings\Bioanalyzer\2012-04-13\2012-04-13_002.xad

Created: 4/13/2012 10:07:58 AM
 Modified: 4/13/2012 10:47:34 AM

Electrophoresis File Run Summary (Chip Summary)

Sample Name	Sample Comment	Rest. Digest	Status	Observation	Result Label	Result Color
sample 1	#2	<input type="checkbox"/>	✓			
sample 2	#3 4/3	<input type="checkbox"/>	✓			
sample 3	#34/5	<input type="checkbox"/>	✓			
sample 4	#5	<input type="checkbox"/>	✓			
sample 5	#6 4/3	<input type="checkbox"/>	✓			
sample 6	#6 4/5	<input type="checkbox"/>	✓			
sample 7	#8	<input type="checkbox"/>	✓			
sample 8	#9	<input type="checkbox"/>	✓			
sample 9	#11	<input type="checkbox"/>	✓			
sample 10	redo	<input type="checkbox"/>	✓			
sample 11		<input type="checkbox"/>				
Ladder		<input type="checkbox"/>	✓			

Chip Lot #

Reagent Kit Lot #

Chip Comments :

Assay Class: High Sensitivity DNA Assay
Data Path: C:\...ents and Settings\Bioanalyzer\2012-04-13\2012-04-13_002.xad

Created: 4/13/2012 10:07:58 AM
Modified: 4/13/2012 10:47:34 AM

Electrophoresis Assay Details

General Analysis Settings

Number of Available Sample and Ladder Wells (Max.) : 12
Minimum Visible Range [s] : 32
Maximum Visible Range [s] : 138
Start Analysis Time Range [s] : 33
End Analysis Time Range [s] : 137.5
Ladder Concentration [pg/μl] : 1950
Uses Standard Area for Ladder Fragments
Lower Marker Concentration [pg/μl] : 125
Upper Marker Concentration [pg/μl] : 75
Used Upper Marker for Quantitation
Standard Curve Fit is Point to Point
Show Data Aligned to Lower and Upper Marker

Integrator Settings

Integration Start Time [s] : 33.05
Integration End Time [s] : 137
Slope Threshold : 0.8
Height Threshold [FU] : 5
Area Threshold : 0.1
Width Threshold [s] : 0.6
Baseline Plateau [s] : 0.5

Filter Settings

Filter Width [s] : 0.5
Polynomial Order : 4

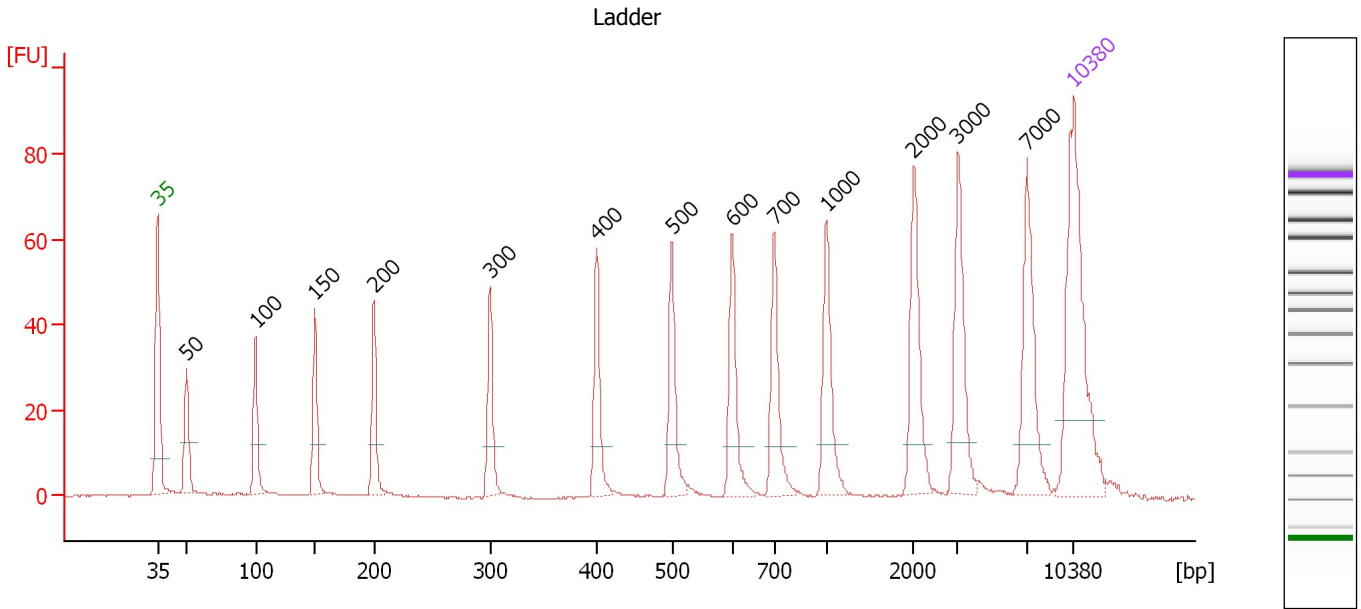
Ladder

Ladder Peak	Size	Area
1	35	160
2	50	210
3	100	208
4	150	221
5	200	242
6	300	270
7	400	305
8	500	306
9	600	336
10	700	321
11	1000	366
12	2000	413
13	3000	411
14	7000	400
15	10380	214

Assay Class: High Sensitivity DNA Assay
 Data Path: C:\...ents and Settings\Bioanalyzer\2012-04-13\2012-04-13_002.xad

Created: 4/13/2012 10:07:58 AM
 Modified: 4/13/2012 10:47:34 AM

Electropherogram Summary



Overall Results for Ladder

Noise: 0.2

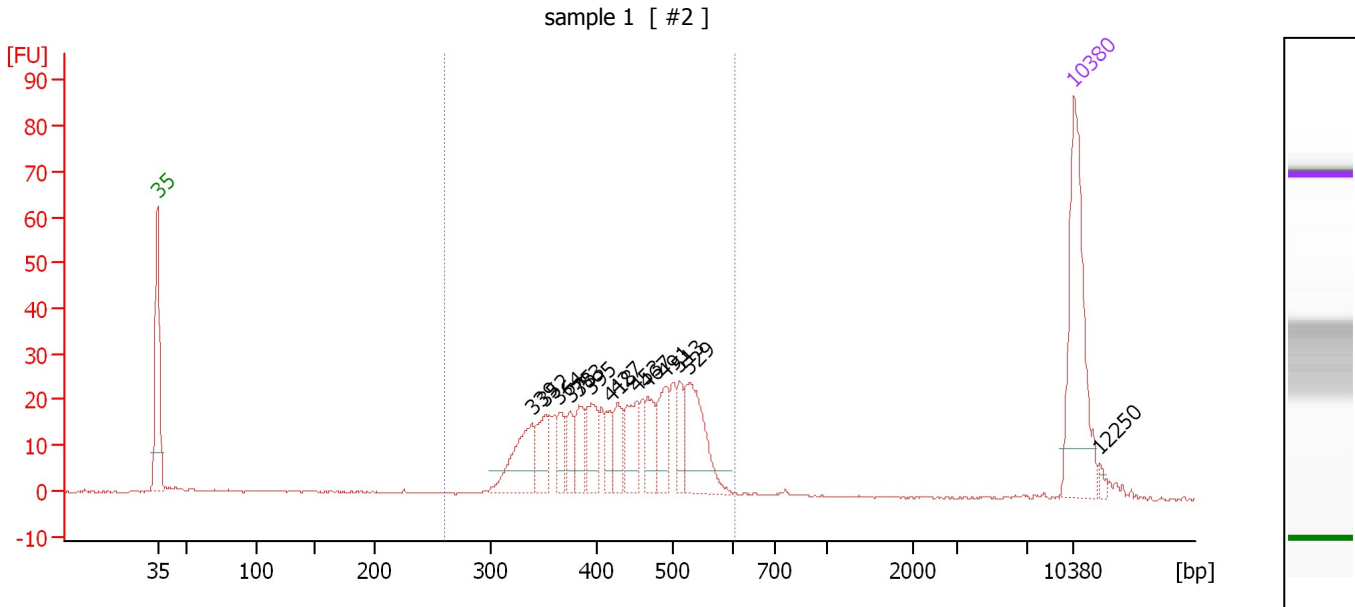
Peak table for Ladder

Peak	Size [bp]	Conc. [pg/μl]	Molarity [pmol/l]	Observations
1	35	125.00	5,411.3	Lower Marker
2	50	150.00	4,545.5	Ladder Peak
3	100	150.00	2,272.7	Ladder Peak
4	150	150.00	1,515.2	Ladder Peak
5	200	150.00	1,136.4	Ladder Peak
6	300	150.00	757.6	Ladder Peak
7	400	150.00	568.2	Ladder Peak
8	500	150.00	454.5	Ladder Peak
9	600	150.00	378.8	Ladder Peak
10	700	150.00	324.7	Ladder Peak
11	1,000	150.00	227.3	Ladder Peak
12	2,000	150.00	113.6	Ladder Peak
13	3,000	150.00	75.8	Ladder Peak
14	7,000	150.00	32.5	Ladder Peak
15	10,380	75.00	10.9	Upper Marker

Assay Class: High Sensitivity DNA Assay
 Data Path: C:\...ents and Settings\Bioanalyzer\2012-04-13\2012-04-13_002.xad

Created: 4/13/2012 10:07:58 AM
 Modified: 4/13/2012 10:47:34 AM

Electropherogram Summary Continued ...



Overall Results for sample 1 : sample 1

Number of peaks found: 14 Corr. Area 1: 398.7
 Noise: 0.2

Peak table for sample 1 : sample 1

Peak	Size [bp]	Conc. [pg/μl]	Molarity [pmol/l]	Observations
1	35	125.00	5,411.3	Lower Marker
2	339	45.78	204.4	
3	352	24.28	104.5	
4	364	17.29	71.9	
5	375	15.83	63.9	
6	383	21.23	83.9	
7	395	26.01	99.7	
8	418	14.16	51.4	
9	427	18.38	65.2	
10	453	30.96	103.5	
11	467	22.65	73.5	
12	491	28.06	86.6	
13	513	18.73	55.3	
14	529	52.47	150.3	
15	10,380	75.00	10.9	Upper Marker
16	12,250	0.00	0.0	

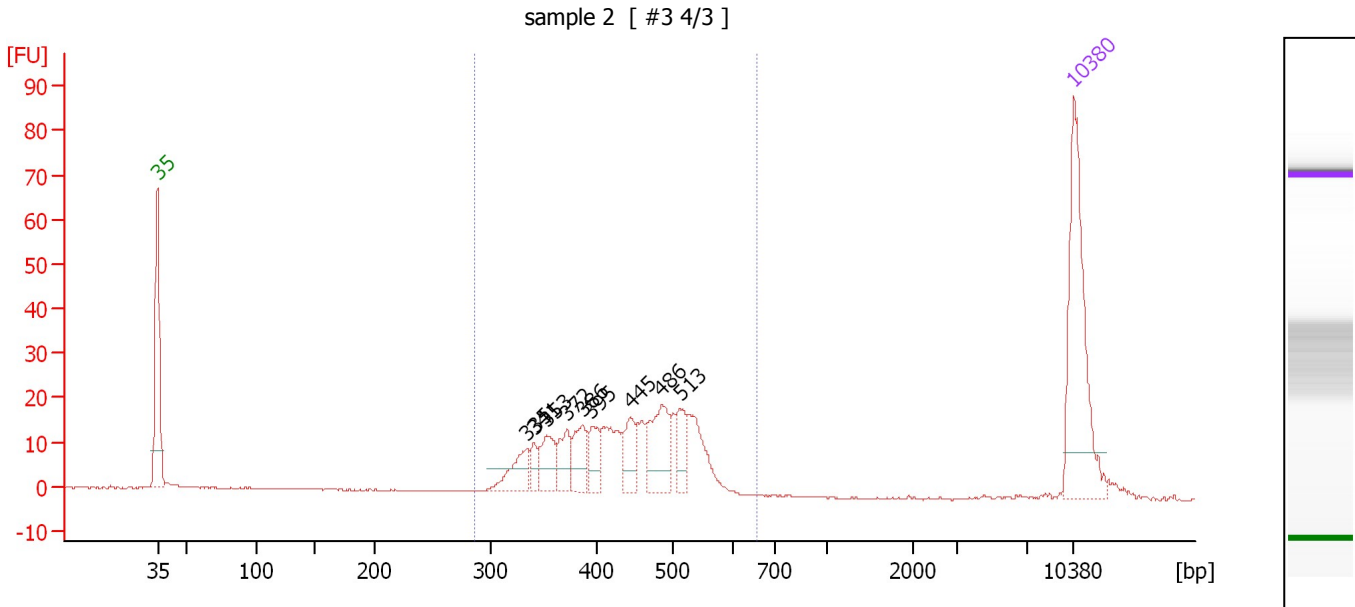
Region table for sample 1 : sample 1

From [bp]	Molarity [pmol/l]	Average Size [bp]	Conc. [pg/μl]	To [bp]	Corr. Area	% of Total	Size distribution in CV [%]	Color
261	1,501.5	435	415.45	608	398.7	93	16.4	Blue

Assay Class: High Sensitivity DNA Assay
 Data Path: C:\...ents and Settings\Bioanalyzer\2012-04-13\2012-04-13_002.xad

Created: 4/13/2012 10:07:58 AM
 Modified: 4/13/2012 10:47:34 AM

Electropherogram Summary Continued ...



Overall Results for sample 2 : sample 2

Number of peaks found: 9 Corr. Area 1: 297.2
 Noise: 0.2

Peak table for sample 2 : sample 2

Peak	Size [bp]	Conc. [pg/μl]	Molarity [pmol/l]	Observations
1	35	125.00	5,411.3	Lower Marker
2	335	22.89	103.6	
3	341	8.82	39.2	
4	353	23.13	99.3	
5	372	18.77	76.5	
6	386	22.76	89.3	
7	395	17.81	68.3	
8	445	20.57	70.1	
9	486	39.12	122.1	
10	513	16.85	49.7	
11	10,380	75.00	10.9	Upper Marker

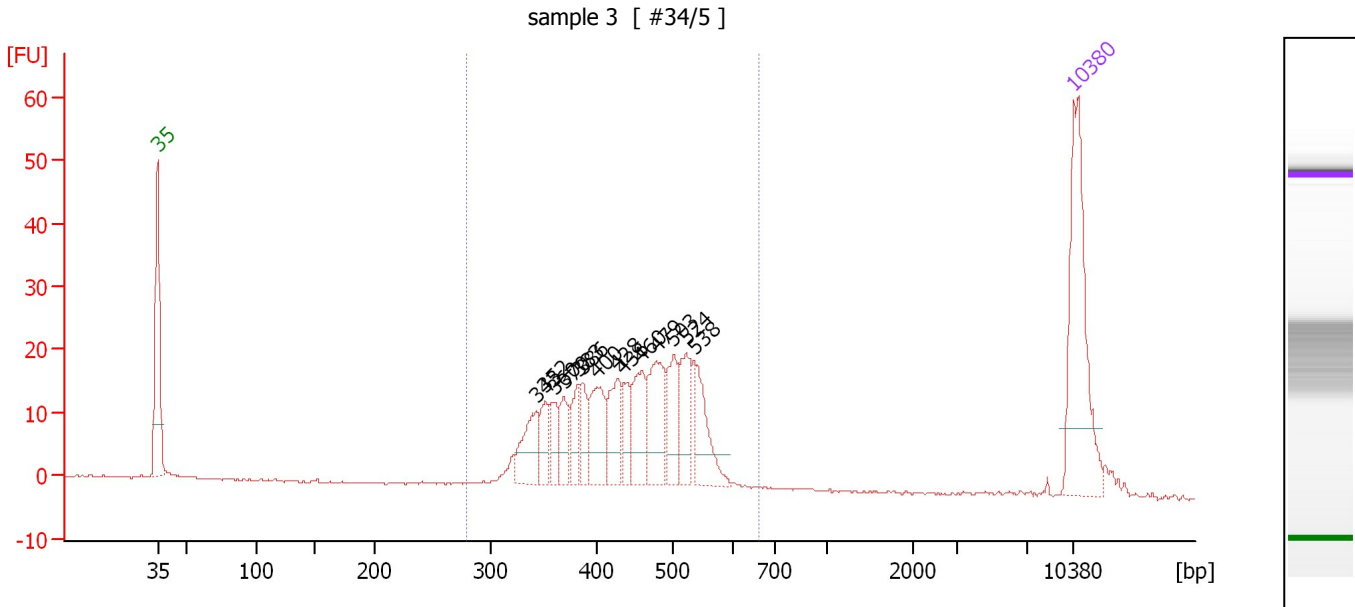
Region table for sample 2 : sample 2

From [bp]	Molarity [pmol/l]	Average Size [bp]	Conc. [pg/μl]	To [bp]	Corr. Area	% of Total	Size distribution in CV [%]	Color
287	1,046.1	438	291.66	658	297.2	93	16.1	Blue

Assay Class: High Sensitivity DNA Assay
 Data Path: C:\...ents and Settings\Bioanalyzer\2012-04-13\2012-04-13_002.xad

Created: 4/13/2012 10:07:58 AM
 Modified: 4/13/2012 10:47:34 AM

Electropherogram Summary Continued ...



Overall Results for sample 3 : sample 3

Number of peaks found: 14 Corr. Area 1: 317.6
 Noise: 0.2

Peak table for sample 3 : sample 3

Peak	Size [bp]	Conc. [pg/μl]	Molarity [pmol/l]	Observations
1	35	125.00	5,411.3	Lower Marker
2	343	33.23	146.8	
3	352	17.38	74.9	
4	360	16.37	68.9	
5	370	19.90	81.6	
6	383	18.73	74.2	
7	386	18.11	71.1	
8	400	34.48	130.5	
9	428	30.29	107.3	
10	436	16.90	58.8	
11	460	34.27	112.9	
12	479	45.48	143.9	
13	503	29.99	90.4	
14	524	31.42	90.9	
15	538	35.52	100.1	
16	10,380	75.00	10.9	Upper Marker

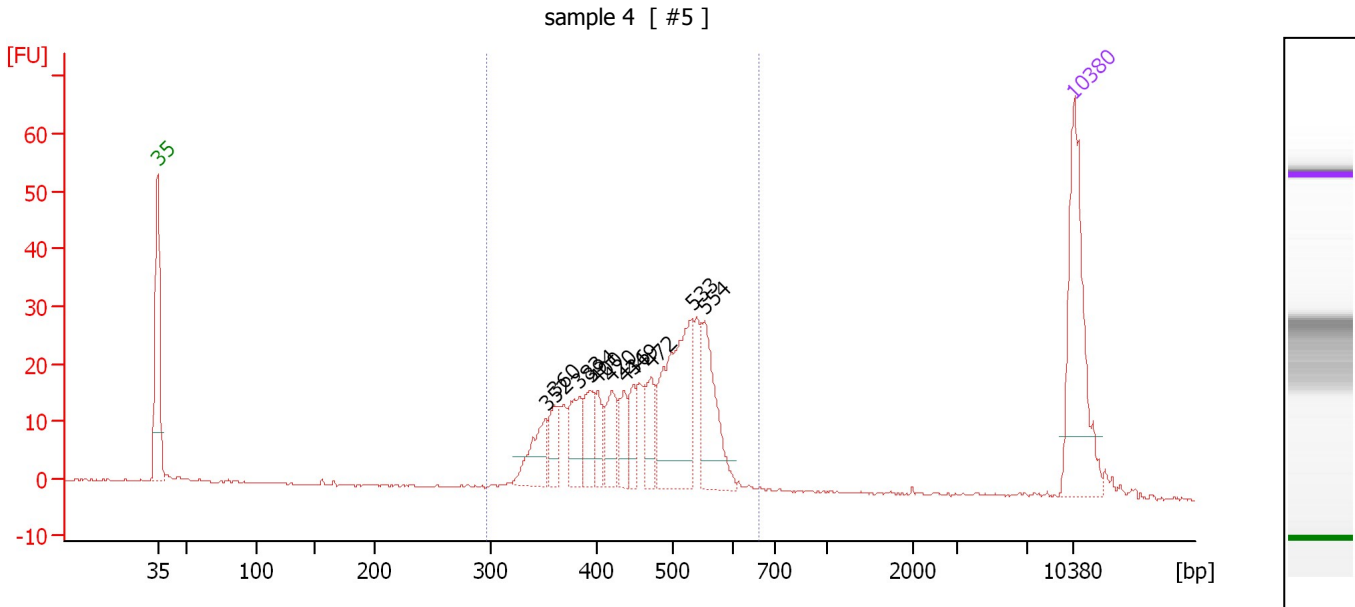
Region table for sample 3 : sample 3

From [bp]	Molarity [pmol/l]	Average Size [bp]	Conc. [pg/μl]	To [bp]	Corr. Area	% of Total	Size distribution in CV [%]	Color
280	1,527.7	443	431.08	663	317.6	94	16.0	Blue

Assay Class: High Sensitivity DNA Assay
 Data Path: C:\...ents and Settings\Bioanalyzer\2012-04-13\2012-04-13_002.xad

Created: 4/13/2012 10:07:58 AM
 Modified: 4/13/2012 10:47:34 AM

Electropherogram Summary Continued ...



Overall Results for sample 4 : sample 4

Number of peaks found: 11 Corr. Area 1: 355.4
 Noise: 0.2

Peak table for sample 4 : sample 4

Peak	Size [bp]	Conc. [pg/μl]	Molarity [pmol/l]	Observations
1	35	125.00	5,411.3	Lower Marker
2	352	33.13	142.5	
3	360	21.42	90.1	
4	383	29.08	114.9	
5	394	25.42	97.8	
6	400	16.53	62.6	
7	420	25.01	90.3	
8	436	16.35	56.8	
9	449	17.28	58.4	
10	472	24.06	77.2	
11	533	102.80	292.2	
12	554	55.41	151.7	
13	10,380	75.00	10.9	Upper Marker

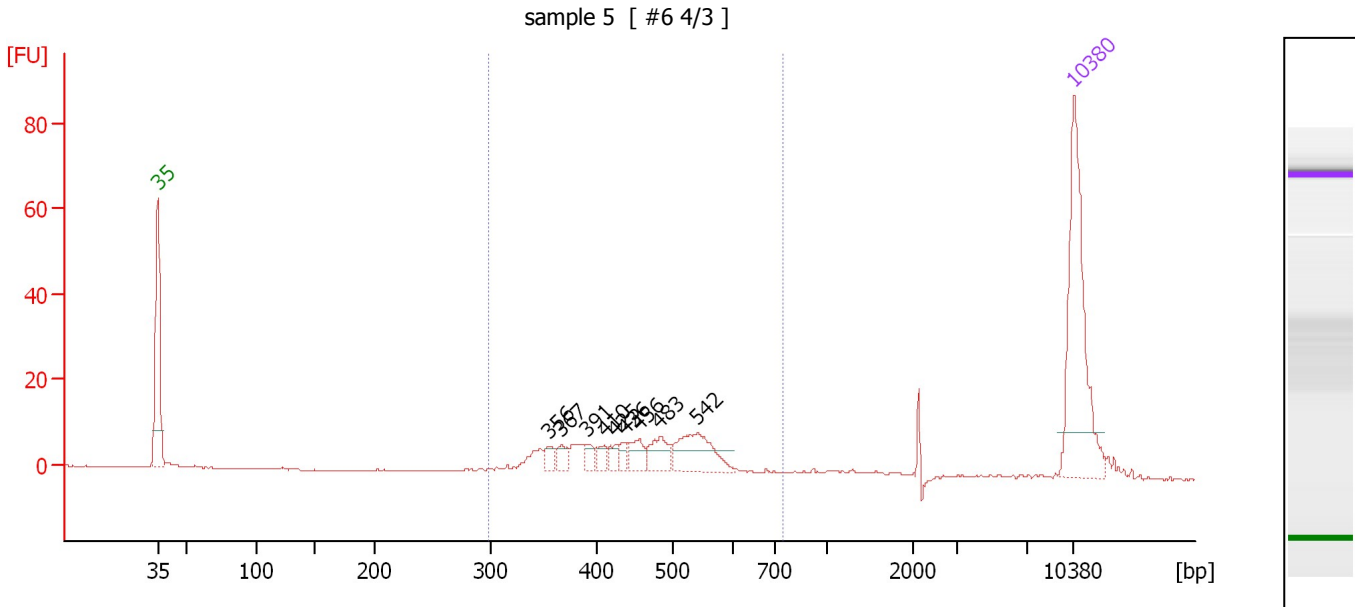
Region table for sample 4 : sample 4

From [bp]	Molarity [pmol/l]	Average Size [bp]	Conc. [pg/μl]	To [bp]	Corr. Area	% of Total	Size distribution in CV [%]	Color
297	1,543.9	463	454.88	662	355.4	96	15.8	Blue

Assay Class: High Sensitivity DNA Assay
 Data Path: C:\...ents and Settings\Bioanalyzer\2012-04-13\2012-04-13_002.xad

Created: 4/13/2012 10:07:58 AM
 Modified: 4/13/2012 10:47:34 AM

Electropherogram Summary Continued ...



Overall Results for sample 5 : sample 5

Number of peaks found: 9 Corr. Area 1: 134.6
 Noise: 0.1

Peak table for sample 5 : sample 5

Peak	Size [bp]	Conc. [pg/μl]	Molarity [pmol/l]	Observations
1	35	125.00	5,411.3	Lower Marker
2	356	5.97	25.4	
3	367	6.78	28.0	
4	391	6.06	23.5	
5	410	6.02	22.2	
6	425	6.20	22.1	
7	436	5.31	18.4	
8	456	10.92	36.3	
9	483	15.13	47.4	
10	542	33.20	92.7	
11	10,380	75.00	10.9	Upper Marker

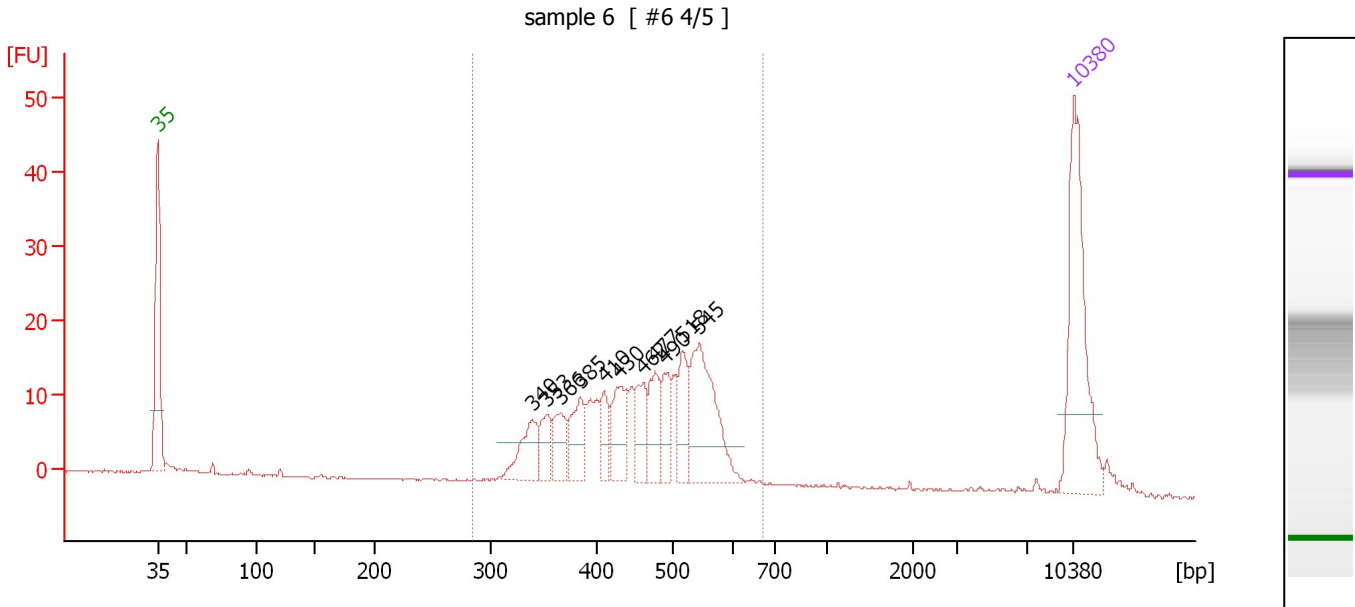
Region table for sample 5 : sample 5

From [bp]	Molarity [pmol/l]	Average Size [bp]	Conc. [pg/μl]	To [bp]	Corr. Area	% of Total	Size distribution in CV [%]	Color
299	464.2	456	133.96	746	134.6	86	17.4	Blue

Assay Class: High Sensitivity DNA Assay
 Data Path: C:\...ents and Settings\Bioanalyzer\2012-04-13\2012-04-13_002.xad

Created: 4/13/2012 10:07:58 AM
 Modified: 4/13/2012 10:47:34 AM

Electropherogram Summary Continued ...



Overall Results for sample 6 : sample 6

Number of peaks found: 11 Corr. Area 1: 247.3
 Noise: 0.2

Peak table for sample 6 : sample 6

Peak	Size [bp]	Conc. [pg/μl]	Molarity [pmol/l]	Observations
1	35	125.00	5,411.3	Lower Marker
2	340	29.74	132.5	
3	353	18.79	80.6	
4	366	22.15	91.8	
5	385	28.11	110.7	
6	410	15.96	59.0	
7	430	31.40	110.7	
8	462	23.92	78.5	
9	477	27.98	88.8	
10	490	23.19	71.7	
11	518	25.66	75.1	
12	545	75.40	209.5	
13	10,380	75.00	10.9	Upper Marker

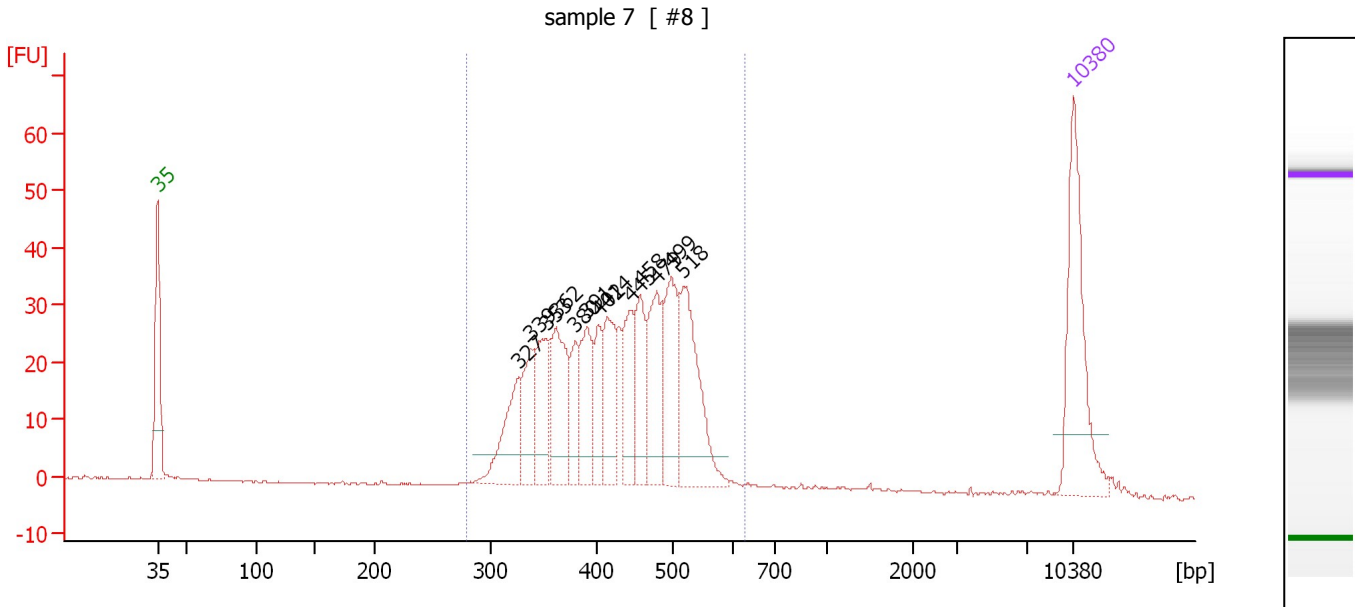
Region table for sample 6 : sample 6

From [bp]	Molarity [pmol/l]	Average Size [bp]	Conc. [pg/μl]	To [bp]	Corr. Area	% of Total	Size distribution in CV [%]	Color
284	1,360.3	458	395.47	671	247.3	93	16.6	Blue

Assay Class: High Sensitivity DNA Assay
 Data Path: C:\...ents and Settings\Bioanalyzer\2012-04-13\2012-04-13_002.xad

Created: 4/13/2012 10:07:58 AM
 Modified: 4/13/2012 10:47:34 AM

Electropherogram Summary Continued ...



Overall Results for sample 7 : sample 7

Number of peaks found: 13 Corr. Area 1: 559.3
 Noise: 0.1

Peak table for sample 7 : sample 7

Peak	Size [bp]	Conc. [pg/μl]	Molarity [pmol/l]	Observations
1	35	125.00	5,411.3	Lower Marker
2	327	51.82	240.3	
3	339	40.65	181.8	
4	353	50.03	214.6	
5	362	67.65	283.0	
6	380	30.95	123.3	
7	391	47.74	185.0	
8	402	28.46	107.3	
9	414	50.59	185.3	
10	445	41.86	142.5	
11	458	46.69	154.4	
12	479	59.04	186.6	
13	499	67.81	205.9	
14	518	89.76	262.6	
15	10,380	75.00	10.9	Upper Marker

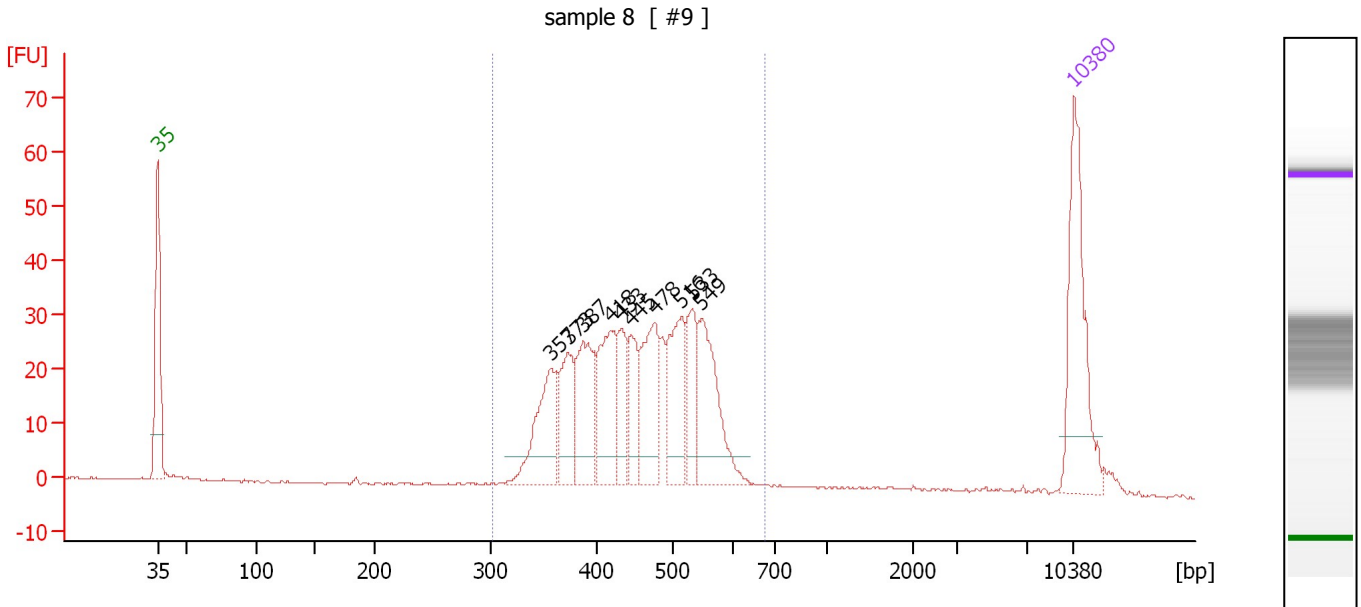
Region table for sample 7 : sample 7

From [bp]	Molarity [pmol/l]	Average Size [bp]	Conc. [pg/μl]	To [bp]	Corr. Area	% of Total	Size distribution in CV [%]	Color
279	2,646.3	429	722.99	628	559.3	98	16.3	Blue

Assay Class: High Sensitivity DNA Assay
 Data Path: C:\...ents and Settings\Bioanalyzer\2012-04-13\2012-04-13_002.xad

Created: 4/13/2012 10:07:58 AM
 Modified: 4/13/2012 10:47:34 AM

Electropherogram Summary Continued ...



Overall Results for sample 8 : sample 8

Number of peaks found: 10 Corr. Area 1: 490.1
 Noise: 0.2

Peak table for sample 8 : sample 8

Peak	Size [bp]	Conc. [pg/μl]	Molarity [pmol/l]	Observations
1	35	125.00	5,411.3	Lower Marker
2	357	68.62	291.1	
3	373	43.83	178.0	
4	387	66.03	258.2	
5	418	64.14	232.3	
6	433	32.06	112.2	
7	445	35.89	122.2	
8	478	62.94	199.7	
9	516	61.33	180.1	
10	533	38.49	109.4	
11	549	72.67	200.5	
12	10,380	75.00	10.9	Upper Marker

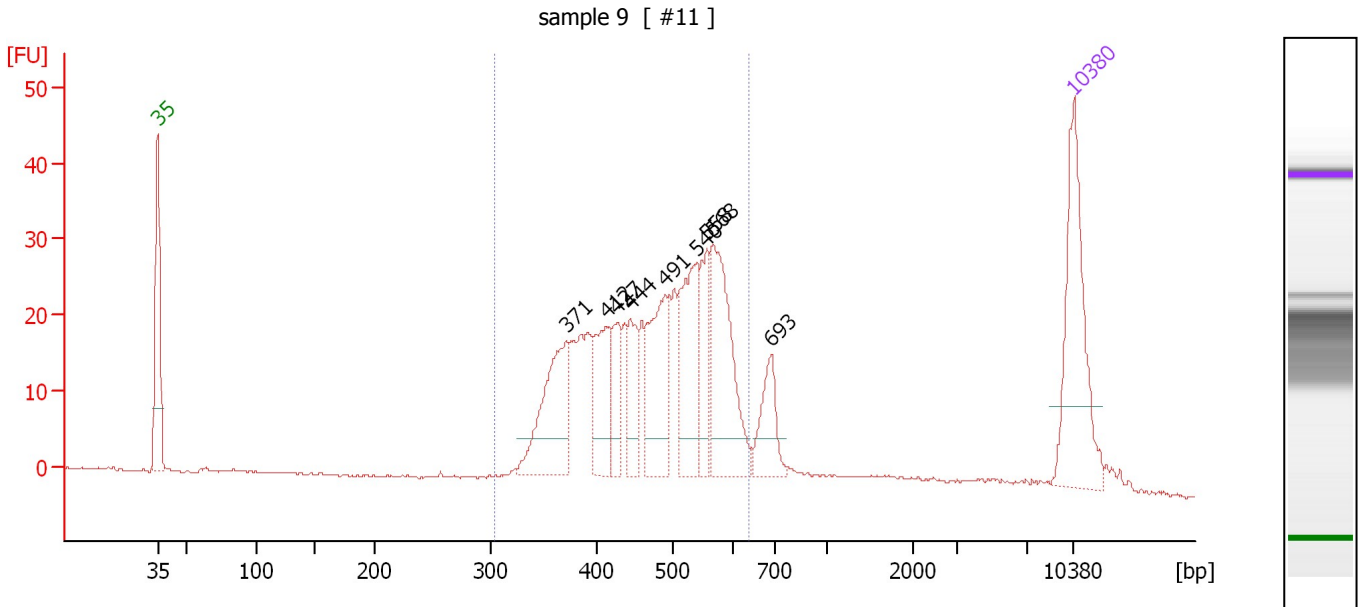
Region table for sample 8 : sample 8

From [bp]	Molarity [pmol/l]	Average Size [bp]	Conc. [pg/μl]	To [bp]	Corr. Area	% of Total	Size distribution in CV [%]	Color
302	2,029.9	456	590.48	678	490.1	96	15.8	Blue

Assay Class: High Sensitivity DNA Assay
 Data Path: C:\...ents and Settings\Bioanalyzer\2012-04-13\2012-04-13_002.xad

Created: 4/13/2012 10:07:58 AM
 Modified: 4/13/2012 10:47:34 AM

Electropherogram Summary Continued ...



Overall Results for sample 9 : sample 9

Number of peaks found: 9 Corr. Area 1: 428.9
 Noise: 0.1

Peak table for sample 9 : sample 9

Peak	Size [bp]	Conc. [pg/μl]	Molarity [pmol/l]	Observations
1	35	125.00	5,411.3	Lower Marker
2	371	83.57	341.3	
3	412	47.73	175.6	
4	427	26.38	93.5	
5	444	31.97	109.0	
6	491	73.41	226.7	
7	540	71.29	200.1	
8	558	35.59	96.7	
9	568	94.23	251.1	
10	693	34.04	74.4	
11	10,380	75.00	10.9	Upper Marker

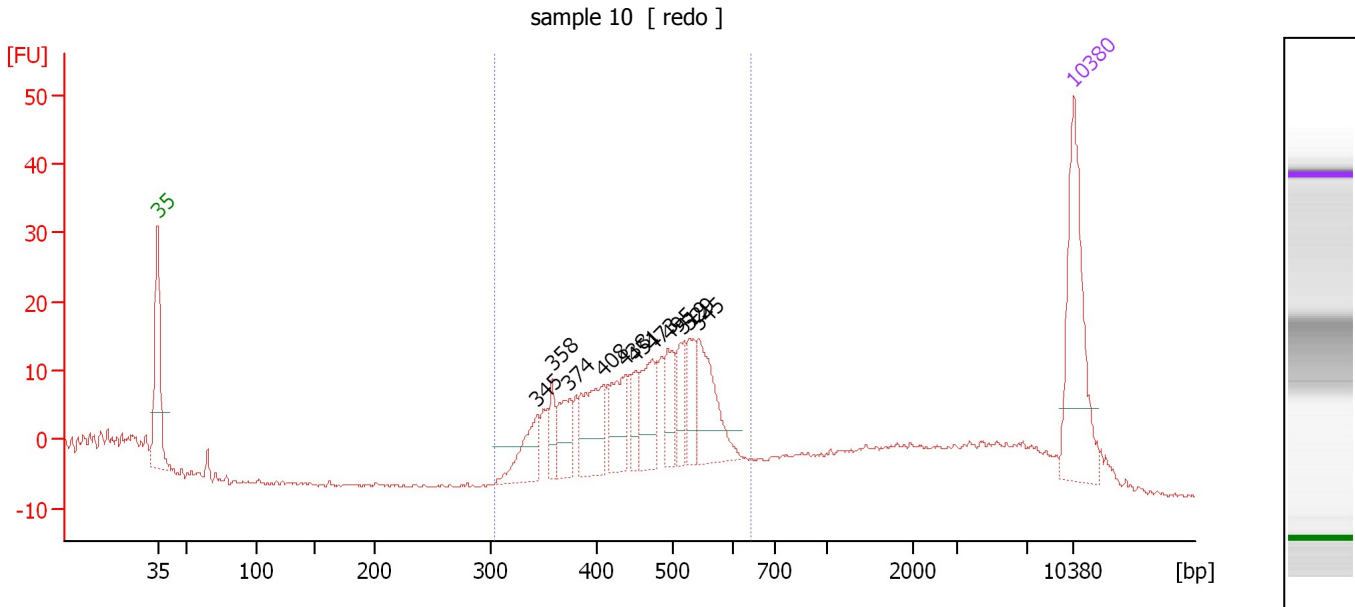
Region table for sample 9 : sample 9

From [bp]	Molarity [pmol/l]	Average Size [bp]	Conc. [pg/μl]	To [bp]	Corr. Area	% of Total	Size distribution in CV [%]	Color
305	2,121.5	475	638.99	640	428.9	88	16.6	Blue

Assay Class: High Sensitivity DNA Assay
 Data Path: C:\...ents and Settings\Bioanalyzer\2012-04-13\2012-04-13_002.xad

Created: 4/13/2012 10:07:58 AM
 Modified: 4/13/2012 10:47:34 AM

Electropherogram Summary Continued ...



Overall Results for sample 10 : sample 10

Number of peaks found: 11 Corr. Area 1: 251.4
 Noise: 0.3

Peak table for sample 10 : sample 10

Peak	Size [bp]	Conc. [pg/μl]	Molarity [pmol/l]	Observations
1	35	125.00	5,411.3	Lower Marker
2	345	34.97	153.8	
3	358	17.71	74.9	
4	374	29.59	119.8	
5	408	48.33	179.6	
6	438	39.33	136.0	
7	451	18.75	62.9	
8	473	39.08	125.1	
9	495	27.77	85.0	
10	519	21.72	63.4	
11	529	25.44	72.9	
12	545	55.04	153.0	
13	10,380	75.00	10.9	Upper Marker

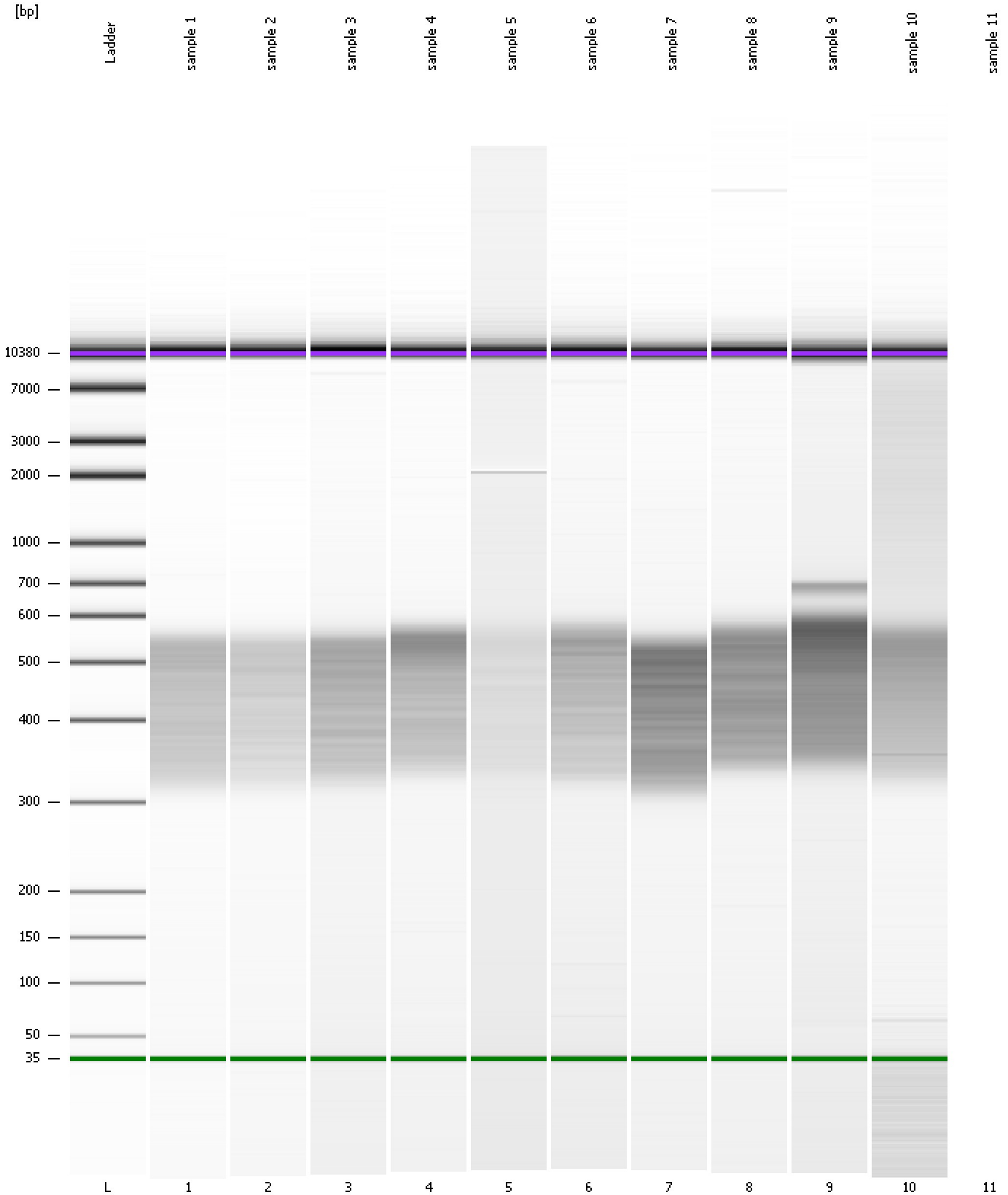
Region table for sample 10 : sample 10

From [bp]	Molarity [pmol/l]	Average Size [bp]	Conc. [pg/μl]	To [bp]	Corr. Area	% of Total	Size distribution in CV [%]	Color
305	1,371.3	465	406.26	645	251.4	66	15.8	Blue

Assay Class: High Sensitivity DNA Assay
Data Path: C:\...ents and Settings\Bioanalyzer\2012-04-13\2012-04-13_002.xad

Created: 4/13/2012 10:07:58 AM
Modified: 4/13/2012 10:47:34 AM

Gel Image



Assay Class: High Sensitivity DNA Assay
Data Path: C:\...ents and Settings\Bioanalyzer\2012-04-13\2012-04-13_002.xad

Created: 4/13/2012 10:07:58 AM
Modified: 4/13/2012 10:47:34 AM

Invalid Samples

Sample 11 has not been run, no results available.

Assay Class: High Sensitivity DNA Assay
 Data Path: C:\...ents and Settings\Bioanalyzer\2012-04-13\2012-04-13_002.xad

Created: 4/13/2012 10:07:58 AM
 Modified: 4/13/2012 10:47:34 AM

Run Logbook

Description	Number	Source	Category	Sub Category	Time	Time Zone	User	Host
Run ended on port 1 (Number of wells acquired: 11)		Instrument	Run		4/13/2012 10:46:25 AM	(GMT --07:00) Pacific Standard Time	UC Davis	D8XSMGH1
Run started on port 1 (File: C:\Documents and Settings\Bioanalyzer\2012-04-13\2012-04-13_002.xad)		Instrument	Run		4/13/2012 10:08:04 AM	(GMT --07:00) Pacific Standard Time	UC Davis	D8XSMGH1
Product Number : G2938B		Instrument	Run		4/13/2012 10:08:04 AM	(GMT --07:00) Pacific Standard Time	UC Davis	D8XSMGH1
Name :		Instrument	Run		4/13/2012 10:08:04 AM	(GMT --07:00) Pacific Standard Time	UC Davis	D8XSMGH1
Vendor : Agilent Technologies		Instrument	Run		4/13/2012 10:08:04 AM	(GMT --07:00) Pacific Standard Time	UC Davis	D8XSMGH1
Serial# : DE13701086		Instrument	Run		4/13/2012 10:08:04 AM	(GMT --07:00) Pacific Standard Time	UC Davis	D8XSMGH1
Firmware : C.01.069		Instrument	Run		4/13/2012 10:08:04 AM	(GMT --07:00) Pacific Standard Time	UC Davis	D8XSMGH1
Cartridge : Electrode		Instrument	Run		4/13/2012 10:08:04 AM	(GMT --07:00) Pacific Standard Time	UC Davis	D8XSMGH1