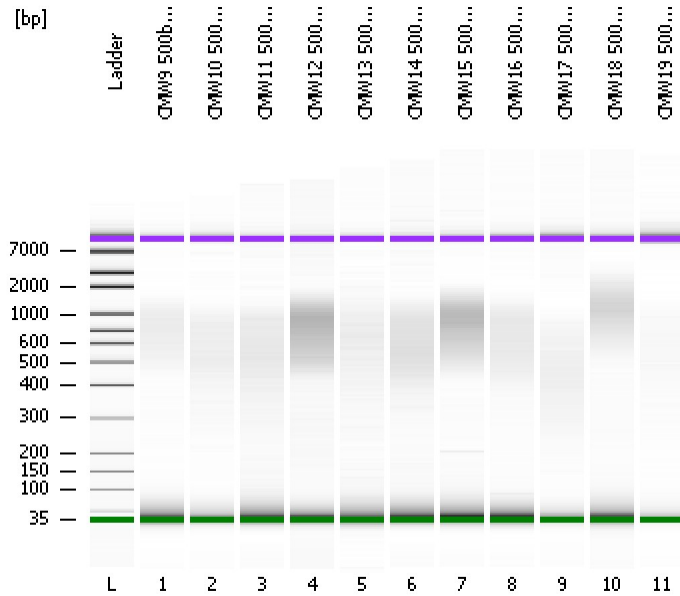


Assay Class: High Sensitivity DNA Assay
Data Path: C:\...ents and Settings\Bioanalyzer\2012-04-13\2012-04-13_003.xad

Created: 4/13/2012 3:28:37 PM
Modified: 4/13/2012 4:11:54 PM

Electrophoresis File Run Summary



Instrument Information:

Instrument Name: DE13701086 Firmware: C.01.069
Serial#: DE13701086 Type: G2938B

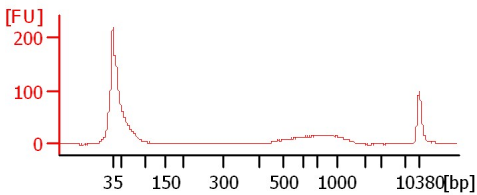
Assay Information:

Assay Origin Path: C:\Program Files\Agilent\2100 bioanalyzer\2100 expert\assays\dsDNA\High Sensitivity DNA.xsy
Assay Class: High Sensitivity DNA Assay
Version: 1.03
Assay Comments: Copyright © 2003-2010 Agilent Technologies

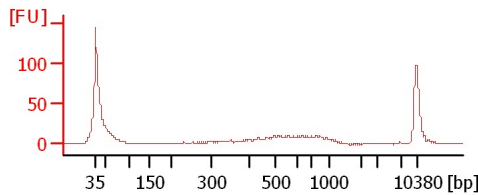
Chip Information:

Chip Lot #: Reagent Kit Lot #: Chip Comments:

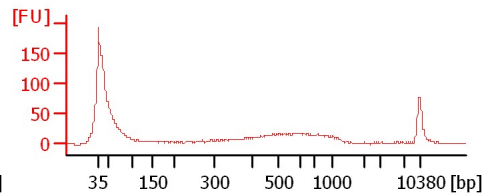
CMW9 500bp 1:10 Soni



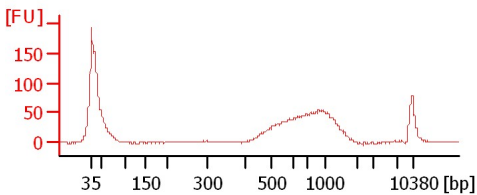
CMW10 500bp 1:10 Soni



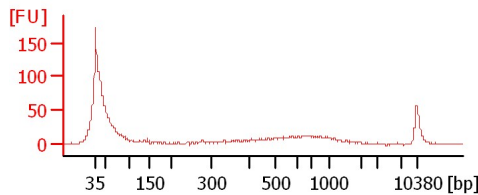
CMW11 500bp 1:10 Soni



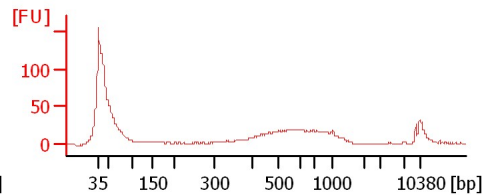
CMW12 500bp 1:10 Soni



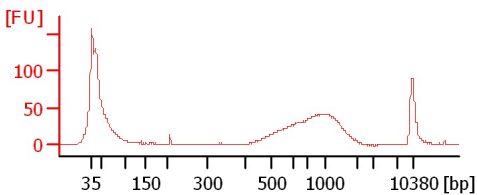
CMW13 500bp 1:10 Soni



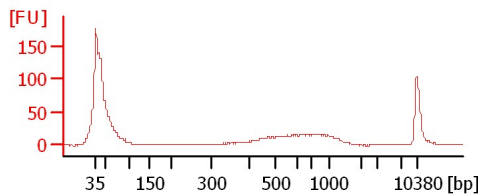
CMW14 500bp 1:10 Soni



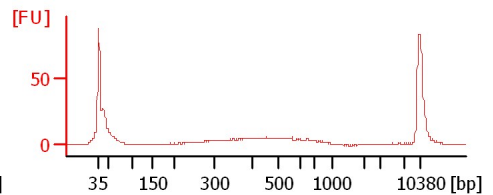
CMW15 500bp 1:10 Soni



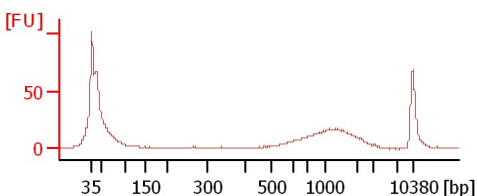
CMW16 500bp 1:10 Soni



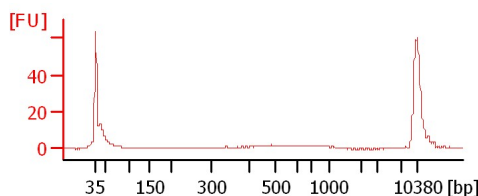
CMW17 500bp 1:10 Soni



CMW18 500bp 1:10 Soni



CMW19 500bp 1:10 Soni



Assay Class: High Sensitivity DNA Assay
Data Path: C:\...ents and Settings\Bioanalyzer\2012-04-13\2012-04-13_003.xad

Created: 4/13/2012 3:28:37 PM
Modified: 4/13/2012 4:11:54 PM

Electrophoresis File Run Summary (Chip Summary)

Sample Name	Sample Comment	Rest. Digest	Status	Observation	Result Label	Result Color
CMW9 500bp 1:10 Soni		<input type="checkbox"/>	✓			
CMW10 500bp 1:10 Soni		<input type="checkbox"/>	✓			
CMW11 500bp 1:10 Soni		<input type="checkbox"/>	✓			
CMW12 500bp 1:10 Soni		<input type="checkbox"/>	✓			
CMW13 500bp 1:10 Soni		<input type="checkbox"/>	✓			
CMW14 500bp 1:10 Soni		<input type="checkbox"/>	✓			
CMW15 500bp 1:10 Soni		<input type="checkbox"/>	✓			
CMW16 500bp 1:10 Soni		<input type="checkbox"/>	✓			
CMW17 500bp 1:10 Soni		<input type="checkbox"/>	✓			
CMW18 500bp 1:10 Soni		<input type="checkbox"/>	✓			
CMW19 500bp 1:10 Soni		<input type="checkbox"/>	✓			
Ladder		<input type="checkbox"/>	✓			

Chip Lot #

Reagent Kit Lot #

Chip Comments :

Assay Class: High Sensitivity DNA Assay
Data Path: C:\...ents and Settings\Bioanalyzer\2012-04-13\2012-04-13_003.xad

Created: 4/13/2012 3:28:37 PM
Modified: 4/13/2012 4:11:54 PM

Electrophoresis Assay Details

General Analysis Settings

Number of Available Sample and Ladder Wells (Max.) : 12
Minimum Visible Range [s] : 32
Maximum Visible Range [s] : 138
Start Analysis Time Range [s] : 33
End Analysis Time Range [s] : 137.5
Ladder Concentration [pg/μl] : 1950
Uses Standard Area for Ladder Fragments
Lower Marker Concentration [pg/μl] : 125
Upper Marker Concentration [pg/μl] : 75
Used Upper Marker for Quantitation
Standard Curve Fit is Point to Point
Show Data Aligned to Lower and Upper Marker

Integrator Settings

Integration Start Time [s] : 33.05
Integration End Time [s] : 137
Slope Threshold : 0.8
Height Threshold [FU] : 5
Area Threshold : 0.1
Width Threshold [s] : 0.6
Baseline Plateau [s] : 0.5

Filter Settings

Filter Width [s] : 0.5
Polynomial Order : 4

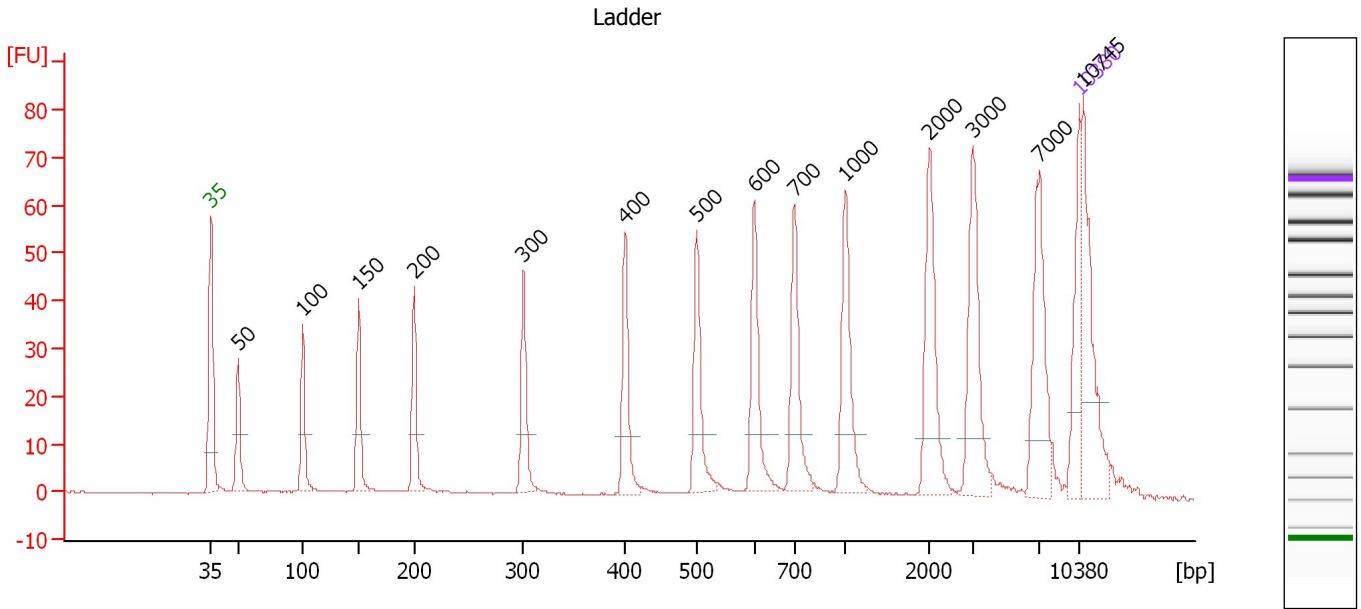
Ladder

Ladder Peak	Size	Area
1	35	160
2	50	210
3	100	208
4	150	221
5	200	242
6	300	270
7	400	305
8	500	306
9	600	336
10	700	321
11	1000	366
12	2000	413
13	3000	411
14	7000	400
15	10380	214

Assay Class: High Sensitivity DNA Assay
 Data Path: C:\...ents and Settings\Bioanalyzer\2012-04-13\2012-04-13_003.xad

Created: 4/13/2012 3:28:37 PM
 Modified: 4/13/2012 4:11:54 PM

Electropherogram Summary



Overall Results for Ladder

Noise: 0.2

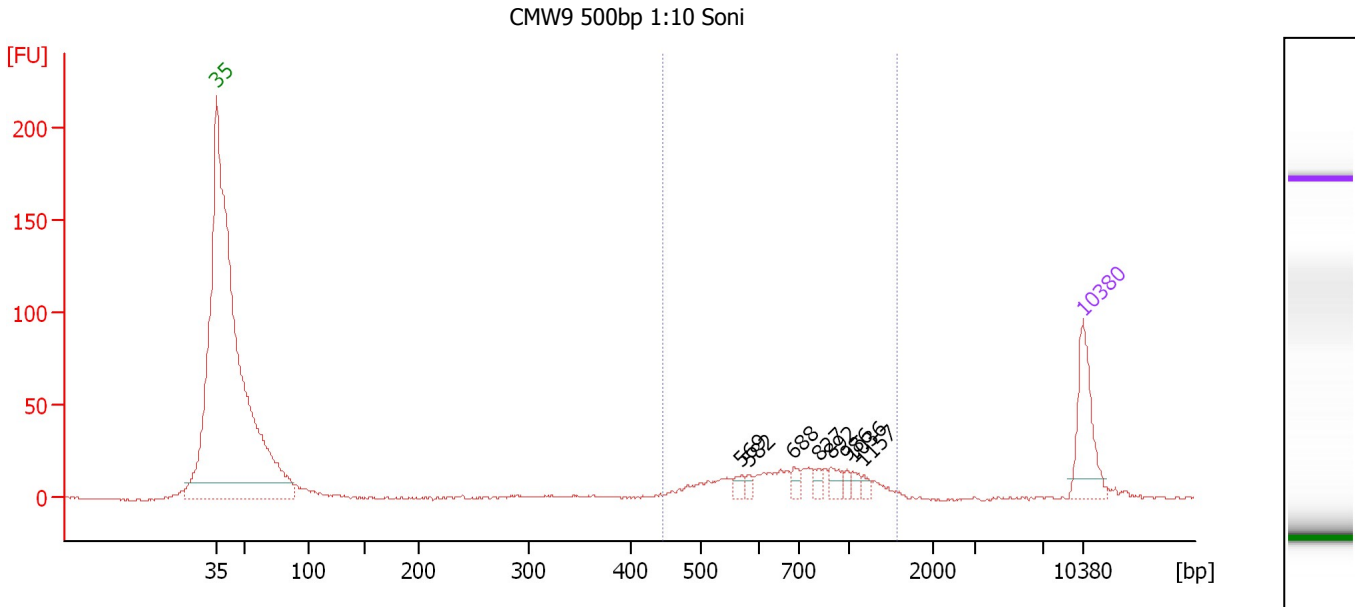
Peak table for Ladder

Peak	Size [bp]	Conc. [pg/μl]	Molarity [pmol/l]	Observations
1	35	125.00	5,411.3	Lower Marker
2	50	150.00	4,545.5	Ladder Peak
3	100	150.00	2,272.7	Ladder Peak
4	150	150.00	1,515.2	Ladder Peak
5	200	150.00	1,136.4	Ladder Peak
6	300	150.00	757.6	Ladder Peak
7	400	150.00	568.2	Ladder Peak
8	500	150.00	454.5	Ladder Peak
9	600	150.00	378.8	Ladder Peak
10	700	150.00	324.7	Ladder Peak
11	1,000	150.00	227.3	Ladder Peak
12	2,000	150.00	113.6	Ladder Peak
13	3,000	150.00	75.8	Ladder Peak
14	7,000	150.00	32.5	Ladder Peak
15	10,380	75.00	10.9	Upper Marker
16	10,745	0.00	0.0	

Assay Class: High Sensitivity DNA Assay
 Data Path: C:\...ents and Settings\Bioanalyzer\2012-04-13\2012-04-13_003.xad

Created: 4/13/2012 3:28:37 PM
 Modified: 4/13/2012 4:11:54 PM

Electropherogram Summary Continued ...



Setpoint Deviations for sample 1 : CMW9 500bp 1:10 Soni

Height Threshold [FU] : 10

Overall Results for sample 1 : CMW9 500bp 1:10 Soni

Number of peaks found: 8 Corr. Area 1: 235.3
 Noise: 0.2

Peak table for sample 1 : CMW9 500bp 1:10 Soni

Peak	Size [bp]	Conc. [pg/μl]	Molarity [pmol/l]	Observations
1	35	125.00	5,411.3	Lower Marker
2	569	12.33	32.8	
3	582	7.80	20.3	
4	688	14.07	31.0	
5	827	12.42	22.8	
6	892	17.88	30.4	
7	986	7.72	11.9	
8	1,036	8.99	13.2	
9	1,157	7.54	9.9	
10	10,380	75.00	10.9	Upper Marker

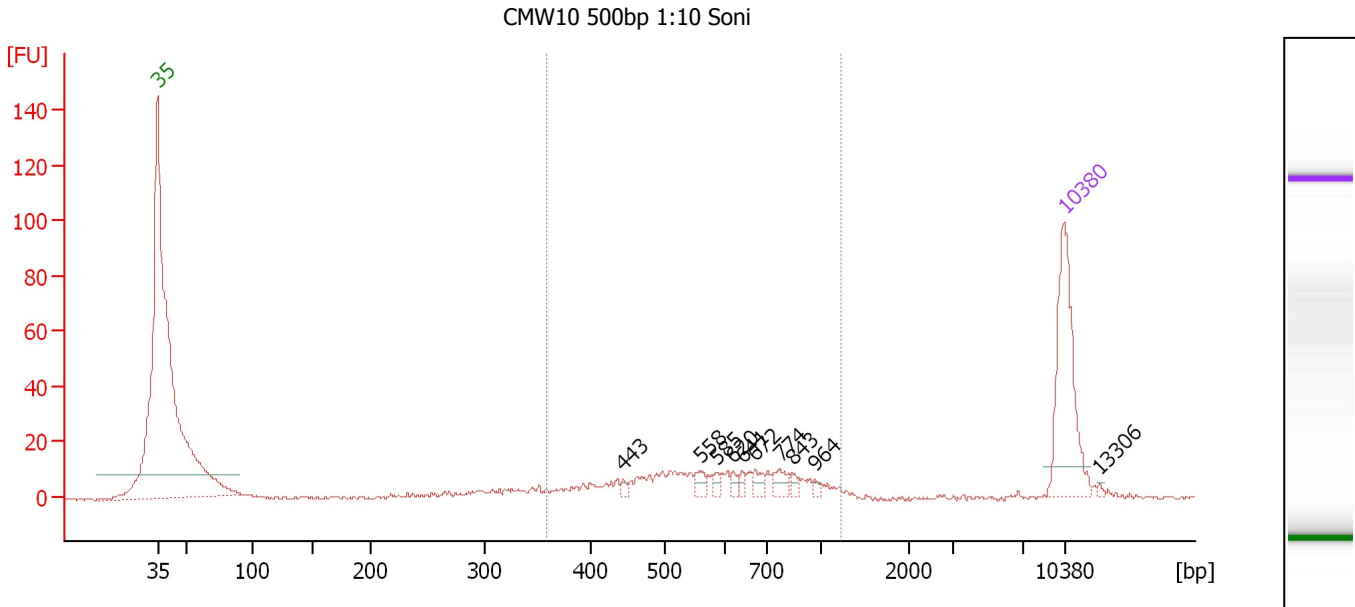
Region table for sample 1 : CMW9 500bp 1:10 Soni

From [bp]	Molarity [pmol/l]	Average Size [bp]	Conc. [pg/μl]	To [bp]	Corr. Area	% of Total	Size distribution in CV [%]	Color
447	446.5	771	203.21	1,578	235.3	80	32.3	Blue

Assay Class: High Sensitivity DNA Assay
 Data Path: C:\...ents and Settings\Bioanalyzer\2012-04-13\2012-04-13_003.xad

Created: 4/13/2012 3:28:37 PM
 Modified: 4/13/2012 4:11:54 PM

Electropherogram Summary Continued ...



Overall Results for sample 2 : CMW10 500bp 1:10 Soni

Number of peaks found: 10 Corr. Area 1: 183.0
 Noise: 0.2

Peak table for sample 2 : CMW10 500bp 1:10 Soni

Peak	Size [bp]	Conc. [pg/μl]	Molarity [pmol/l]	Observations
1	35	125.00	5,411.3	Lower Marker
2	443	3.25	11.1	
3	558	8.13	22.1	
4	585	4.23	11.0	
5	620	4.07	10.0	
6	641	4.18	9.9	
7	672	7.17	16.2	
8	774	9.21	18.0	
9	843	4.13	7.4	
10	964	2.34	3.7	
11	10,380	75.00	10.9	Upper Marker
12	13,306	0.00	0.0	

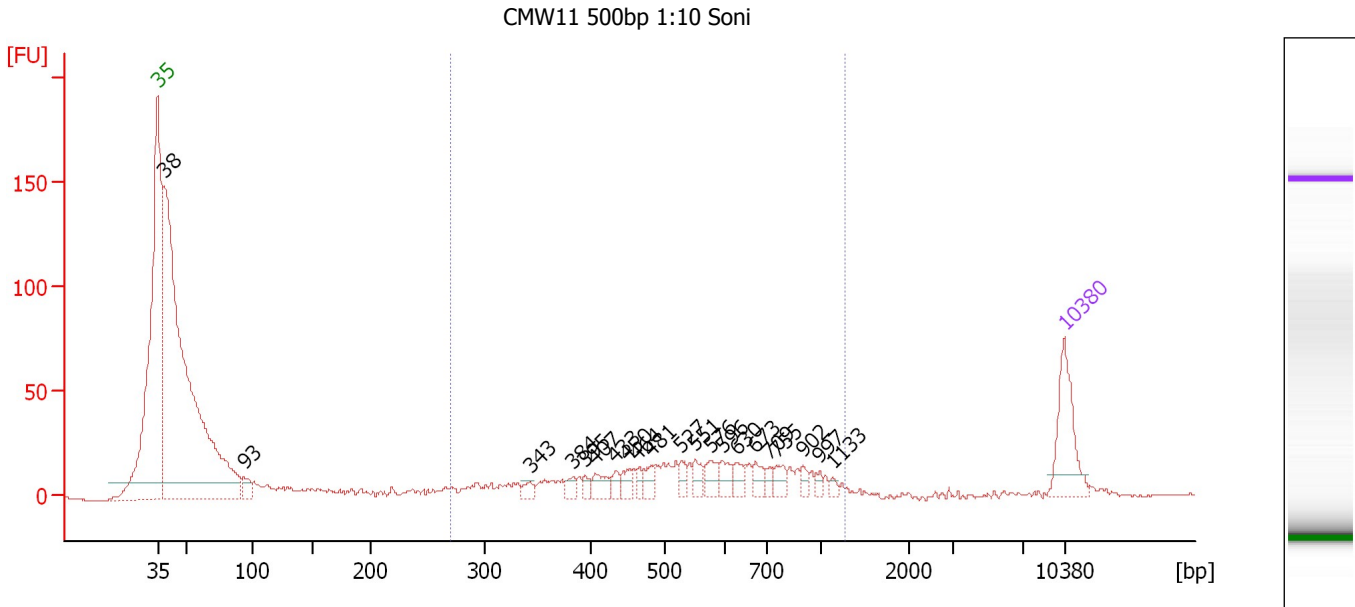
Region table for sample 2 : CMW10 500bp 1:10 Soni

From [bp]	Molarity [pmol/l]	Average Size [bp]	Conc. [pg/μl]	To [bp]	Corr. Area	% of Total	Size distribution in CV [%]	Color
359	389.5	618	143.47	1,243	183.0	82	29.6	Blue

Assay Class: High Sensitivity DNA Assay
 Data Path: C:\...ents and Settings\Bioanalyzer\2012-04-13\2012-04-13_003.xad

Created: 4/13/2012 3:28:37 PM
 Modified: 4/13/2012 4:11:54 PM

Electropherogram Summary Continued ...



Setpoint Deviations for sample 3 : CMW11 500bp 1:10 Soni

Height Threshold [FU] : 8

Overall Results for sample 3 : CMW11 500bp 1:10 Soni

Number of peaks found: 21 Corr. Area 1: 368.6
 Noise: 0.3

Peak table for sample 3 : CMW11 500bp 1:10 Soni

Peak	Size [bp]	Conc. [pg/μl]	Molarity [pmol/l]	Observations
1	35	125.00	5,411.3	Lower Marker
2	38	1,388.60	54,805.3	
3	93	28.56	465.4	
4	343	12.43	54.9	
5	384	13.85	54.7	
6	395	10.47	40.1	
7	407	23.17	86.3	
8	433	13.20	46.2	
9	450	19.25	64.9	
10	464	12.32	40.3	
11	481	18.62	58.7	
12	527	15.72	45.2	
13	551	19.04	52.4	
14	576	25.59	67.3	
15	596	20.84	52.9	
16	630	18.12	43.6	
17	673	18.33	41.3	
18	709	10.58	22.6	
19	755	19.39	38.9	
20	902	10.51	17.7	
21	997	7.57	11.5	
22	1,133	5.80	7.8	


Assay Class: High Sensitivity DNA Assay
Data Path: C:\...ents and Settings\Bioanalyzer\2012-04-13\2012-04-13_003.xad

Created: 4/13/2012 3:28:37 PM
Modified: 4/13/2012 4:11:54 PM

Electropherogram Summary Continued ...**... Peak table for sample 3 : CMW11 500bp 1:10 Soni**

Peak	Size [bp]	Conc. [pg/μl]	Molarity [pmol/l]	Observations
23	10,380	75.00	10.9	Upper Marker

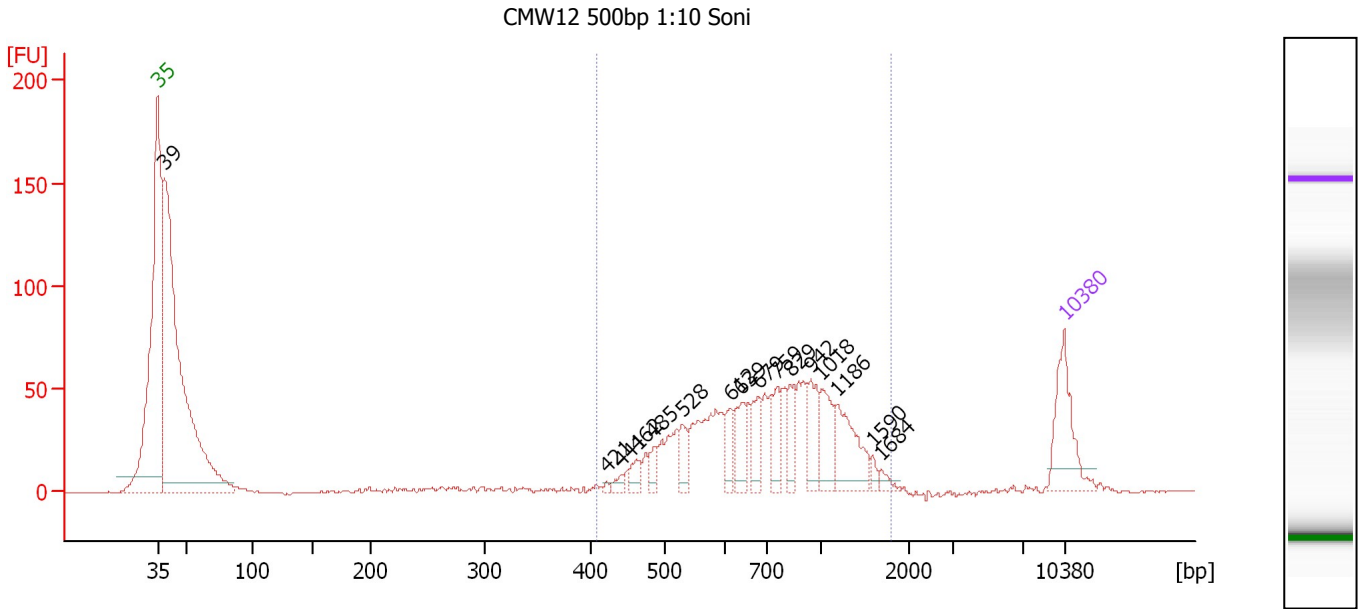
Region table for sample 3 : CMW11 500bp 1:10 Soni

From [bp]	Molarity [pmol/l]	Average Size [bp]	Conc. [pg/μl]	To [bp]	Corr. Area	% of Total	Size distribution in CV [%]	Color
271	1,285.8	578	419.76	1,278	368.6	32	34.8	

Assay Class: High Sensitivity DNA Assay
 Data Path: C:\...ents and Settings\Bioanalyzer\2012-04-13\2012-04-13_003.xad

Created: 4/13/2012 3:28:37 PM
 Modified: 4/13/2012 4:11:54 PM

Electropherogram Summary Continued ...



Overall Results for sample 4 : CMW12 500bp 1:10 Soni

Number of peaks found: 16 Corr. Area 1: 809.1
 Noise: 0.2

Peak table for sample 4 : CMW12 500bp 1:10 Soni

Peak	Size [bp]	Conc. [pg/μl]	Molarity [pmol/l]	Observations
1	35	125.00	5,411.3	Lower Marker
2	39	961.78	37,600.9	
3	421	3.33	12.0	
4	441	9.76	33.5	
5	462	19.71	64.7	
6	485	18.32	57.3	
7	528	29.45	84.5	
8	612	31.45	77.9	
9	639	44.60	105.8	
10	679	40.56	90.6	
11	759	43.15	86.1	
12	829	35.37	64.6	
13	942	47.69	76.7	
14	1,018	51.72	77.0	
15	1,186	76.43	97.6	
16	1,590	7.34	7.0	
17	1,684	8.18	7.4	
18	10,380	75.00	10.9	Upper Marker

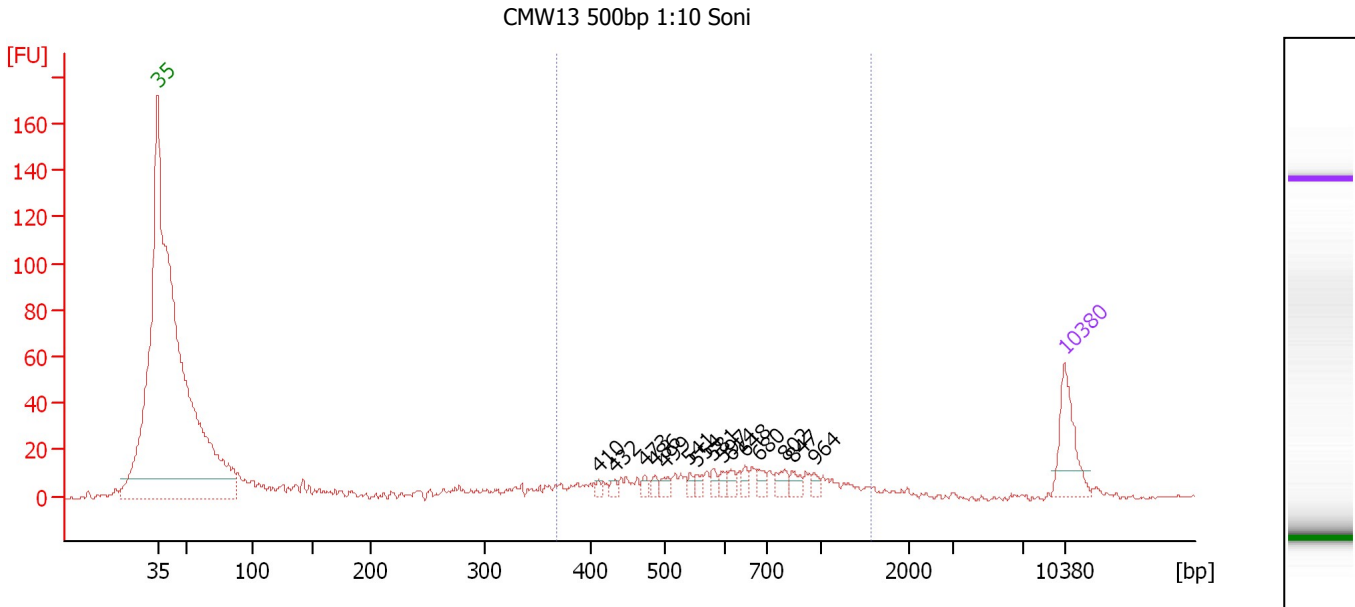
Region table for sample 4 : CMW12 500bp 1:10 Soni

From [bp]	Molarity [pmol/l]	Average Size [bp]	Conc. [pg/μl]	To [bp]	Corr. Area	% of Total	Size distribution in CV [%]	Color
409	1,715.8	805	790.43	1,811	809.1	57	36.7	Blue

Assay Class: High Sensitivity DNA Assay
 Data Path: C:\...ents and Settings\Bioanalyzer\2012-04-13\2012-04-13_003.xad

Created: 4/13/2012 3:28:37 PM
 Modified: 4/13/2012 4:11:54 PM

Electropherogram Summary Continued ...



Setpoint Deviations for sample 5 : CMW13 500bp 1:10 Soni

Height Threshold [FU] : 7

Overall Results for sample 5 : CMW13 500bp 1:10 Soni

Number of peaks found: 15 Corr. Area 1: 195.5
 Noise: 0.4

Peak table for sample 5 : CMW13 500bp 1:10 Soni

Peak	Size [bp]	Conc. [pg/µl]	Molarity [pmol/l]	Observations
1	35	125.00	5,411.3	Lower Marker
2	410	8.27	30.5	
3	432	10.02	35.2	
4	473	10.84	34.7	
5	486	11.54	36.0	
6	499	14.50	44.0	
7	541	10.66	29.8	
8	554	10.41	28.5	
9	581	12.65	33.0	
10	597	12.08	30.6	
11	614	13.39	33.0	
12	648	12.91	30.2	
13	680	16.72	37.3	
14	802	20.46	38.7	
15	847	16.06	28.7	
16	964	10.79	17.0	
17	10,380	75.00	10.9	Upper Marker

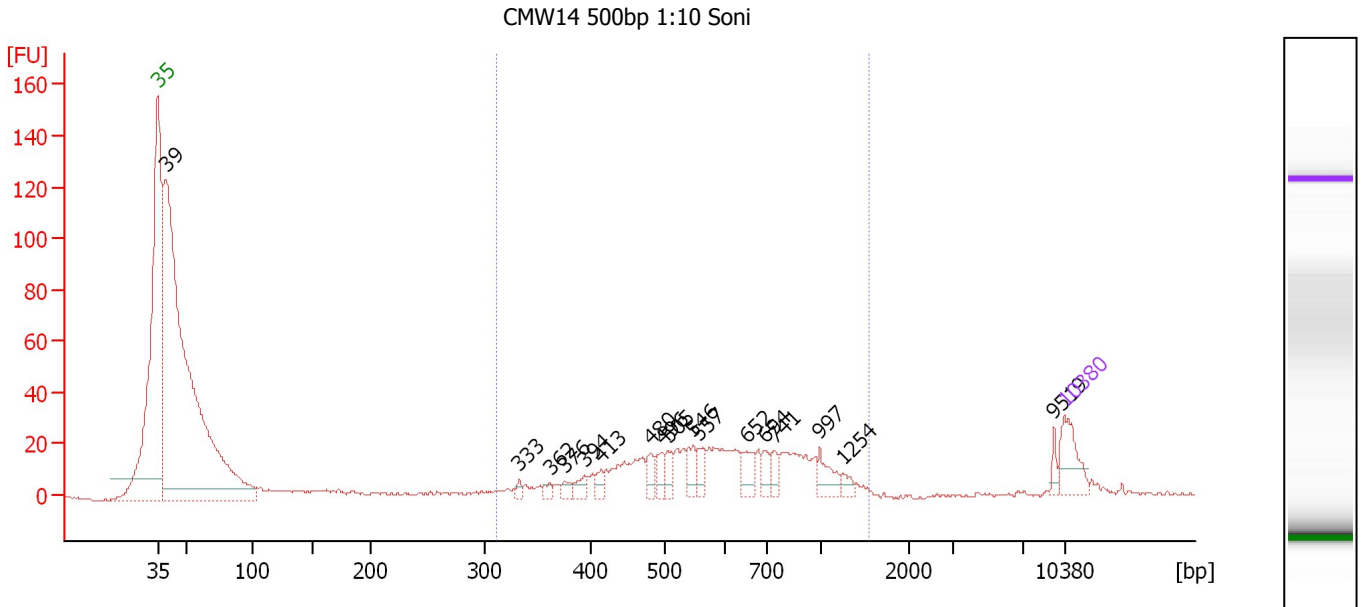
Region table for sample 5 : CMW13 500bp 1:10 Soni

From [bp]	Molarity [pmol/l]	Average Size [bp]	Conc. [pg/µl]	To [bp]	Corr. Area	% of Total	Size distribution in CV [%]	Color
368	775.3	679	301.99	1,566	195.5	71	36.5	Blue

Assay Class: High Sensitivity DNA Assay
 Data Path: C:\...ents and Settings\Bioanalyzer\2012-04-13\2012-04-13_003.xad

Created: 4/13/2012 3:28:37 PM
 Modified: 4/13/2012 4:11:54 PM

Electropherogram Summary Continued ...



Overall Results for sample 6 : CMW14 500bp 1:10 Soni

Number of peaks found: 17 Corr. Area 1: 367.3
 Noise: 0.4

Peak table for sample 6 : CMW14 500bp 1:10 Soni

Peak	Size [bp]	Conc. [pg/μl]	Molarity [pmol/l]	Observations
1	35	125.00	5,411.3	Lower Marker
2	39	2,537.64	97,990.9	
3	333	13.94	63.4	
4	362	14.61	61.1	
5	376	19.60	78.9	
6	394	25.92	99.7	
7	413	24.28	89.0	
8	480	37.28	117.6	
9	496	33.16	101.3	
10	505	36.79	110.4	
11	546	45.25	125.5	
12	557	36.43	99.0	
13	652	49.78	115.6	
14	694	31.59	69.0	
15	741	30.80	63.0	
16	997	51.35	78.0	
17	1,254	17.54	21.2	
18	9,519	15.29	2.4	
19	10,380	75.00	10.9	Upper Marker

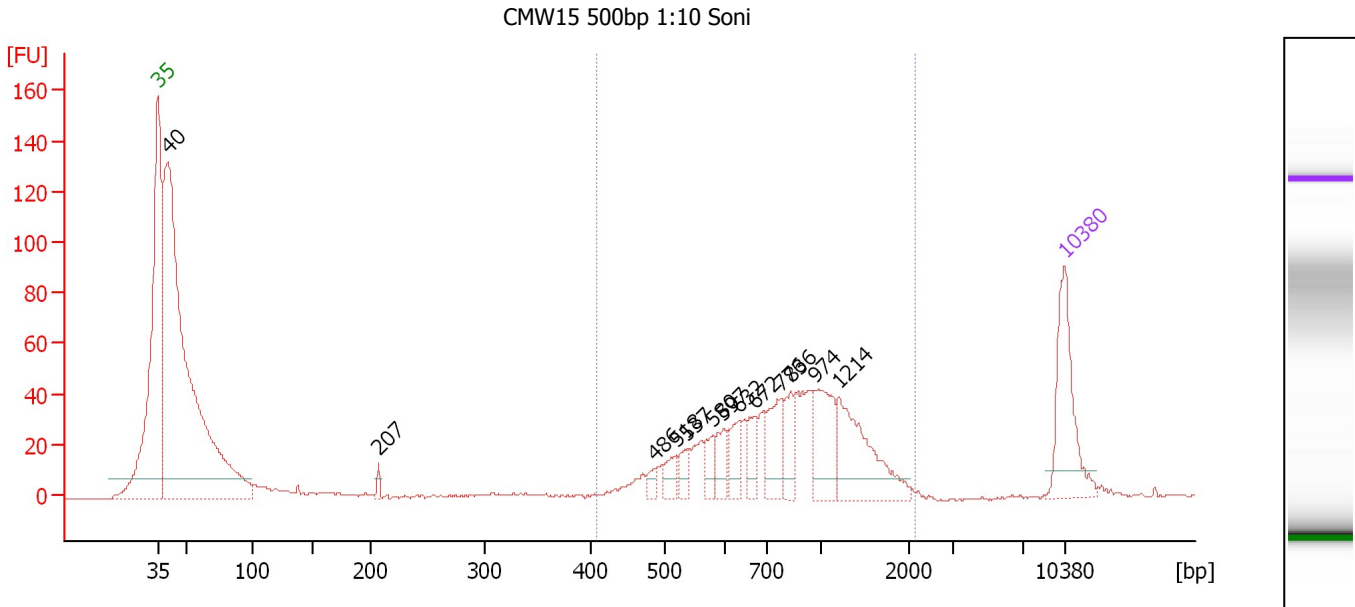
Region table for sample 6 : CMW14 500bp 1:10 Soni

From [bp]	Molarity [pmol/l]	Average Size [bp]	Conc. [pg/μl]	To [bp]	Corr. Area	% of Total	Size distribution in CV [%]	Color
313	2,382.7	644	881.36	1,549	367.3	37	35.6	Blue

Assay Class: High Sensitivity DNA Assay
 Data Path: C:\...ents and Settings\Bioanalyzer\2012-04-13\2012-04-13_003.xad

Created: 4/13/2012 3:28:37 PM
 Modified: 4/13/2012 4:11:54 PM

Electropherogram Summary Continued ...



Setpoint Deviations for sample 7 : CMW15 500bp 1:10 Soni

Height Threshold [FU] : 8

Overall Results for sample 7 : CMW15 500bp 1:10 Soni

Number of peaks found: 13 Corr. Area 1: 592.6
 Noise: 0.4

Peak table for sample 7 : CMW15 500bp 1:10 Soni

Peak	Size [bp]	Conc. [pg/µl]	Molarity [pmol/l]	Observations
1	35	125.00	5,411.3	Lower Marker
2	40	949.59	35,663.9	
3	207	8.09	59.1	
4	486	11.59	36.1	
5	518	18.86	55.1	
6	537	18.08	51.0	
7	580	19.12	49.9	
8	597	24.37	61.8	
9	632	25.78	61.8	
10	672	25.03	56.5	
11	776	48.35	94.4	
12	836	30.98	56.1	
13	974	62.35	96.9	
14	1,214	95.46	119.1	
15	10,380	75.00	10.9	Upper Marker

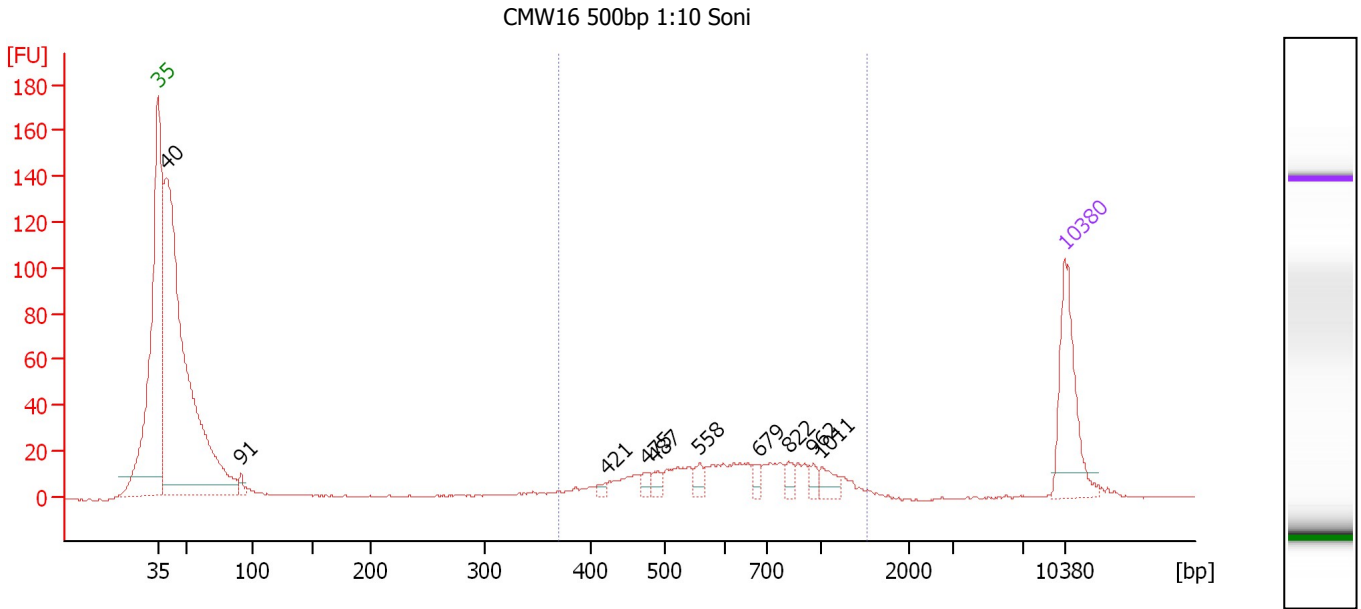
Region table for sample 7 : CMW15 500bp 1:10 Soni

From [bp]	Molarity [pmol/l]	Average Size [bp]	Conc. [pg/µl]	To [bp]	Corr. Area	% of Total	Size distribution in CV [%]	Color
407	982.1	894	491.52	2,148	592.6	47	39.3	Blue

Assay Class: High Sensitivity DNA Assay
 Data Path: C:\...ents and Settings\Bioanalyzer\2012-04-13\2012-04-13_003.xad

Created: 4/13/2012 3:28:37 PM
 Modified: 4/13/2012 4:11:54 PM

Electropherogram Summary Continued ...



Overall Results for sample 8 : CMW16 500bp 1:10 Soni

Number of peaks found: 10 Corr. Area 1: 282.1
 Noise: 0.2

Peak table for sample 8 : CMW16 500bp 1:10 Soni

Peak	Size [bp]	Conc. [pg/μl]	Molarity [pmol/l]	Observations
1	35	125.00	5,411.3	Lower Marker
2	40	800.20	30,518.6	
3	91	10.00	166.4	
4	421	4.93	17.7	
5	475	8.59	27.4	
6	487	9.40	29.3	
7	558	10.72	29.1	
8	679	8.87	19.8	
9	822	10.40	19.2	
10	962	7.24	11.4	
11	1,011	14.46	21.7	
12	10,380	75.00	10.9	Upper Marker

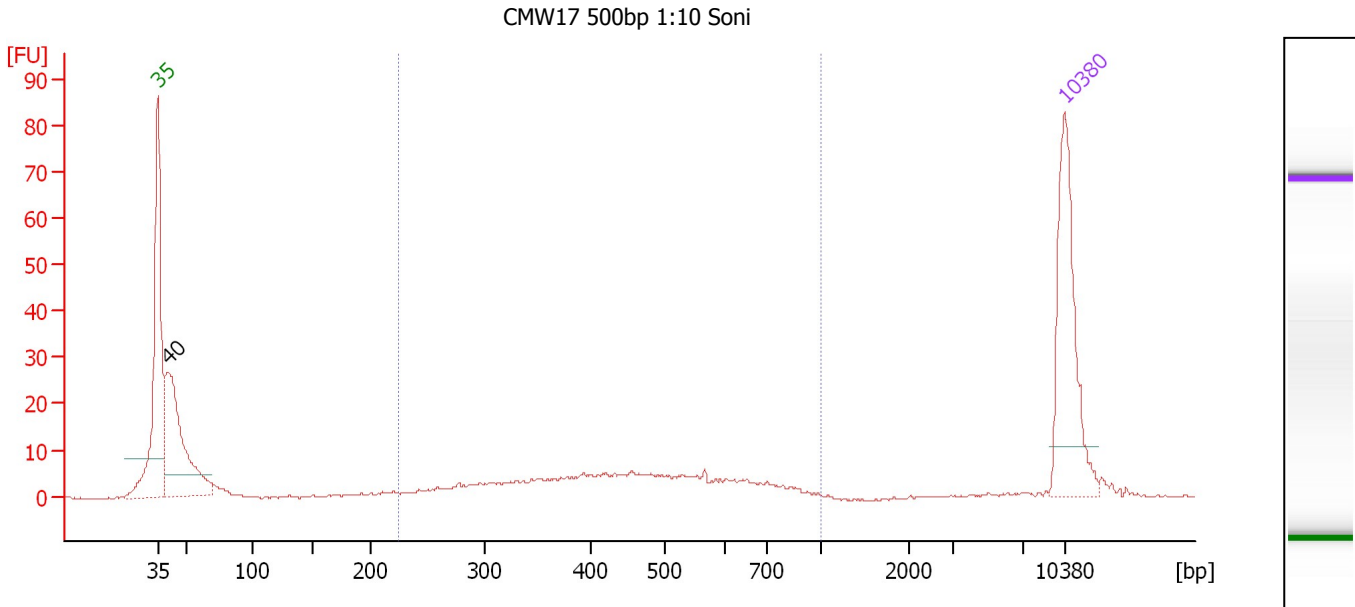
Region table for sample 8 : CMW16 500bp 1:10 Soni

From [bp]	Molarity [pmol/l]	Average Size [bp]	Conc. [pg/μl]	To [bp]	Corr. Area	% of Total	Size distribution in CV [%]	Color
370	548.6	691	219.06	1,532	282.1	29	35.0	Blue

Assay Class: High Sensitivity DNA Assay
 Data Path: C:\...ents and Settings\Bioanalyzer\2012-04-13\2012-04-13_003.xad

Created: 4/13/2012 3:28:37 PM
 Modified: 4/13/2012 4:11:54 PM

Electropherogram Summary Continued ...



Overall Results for sample 9 : CMW17 500bp 1:10 Soni

Number of peaks found: 1 Corr. Area 1: 123.7
 Noise: 0.2

Peak table for sample 9 : CMW17 500bp 1:10 Soni

Peak	Size [bp]	Conc. [pg/μl]	Molarity [pmol/l]	Observations
1	35	125.00	5,411.3	Lower Marker
2	40	146.52	5,499.4	
3	10,380	75.00	10.9	Upper Marker

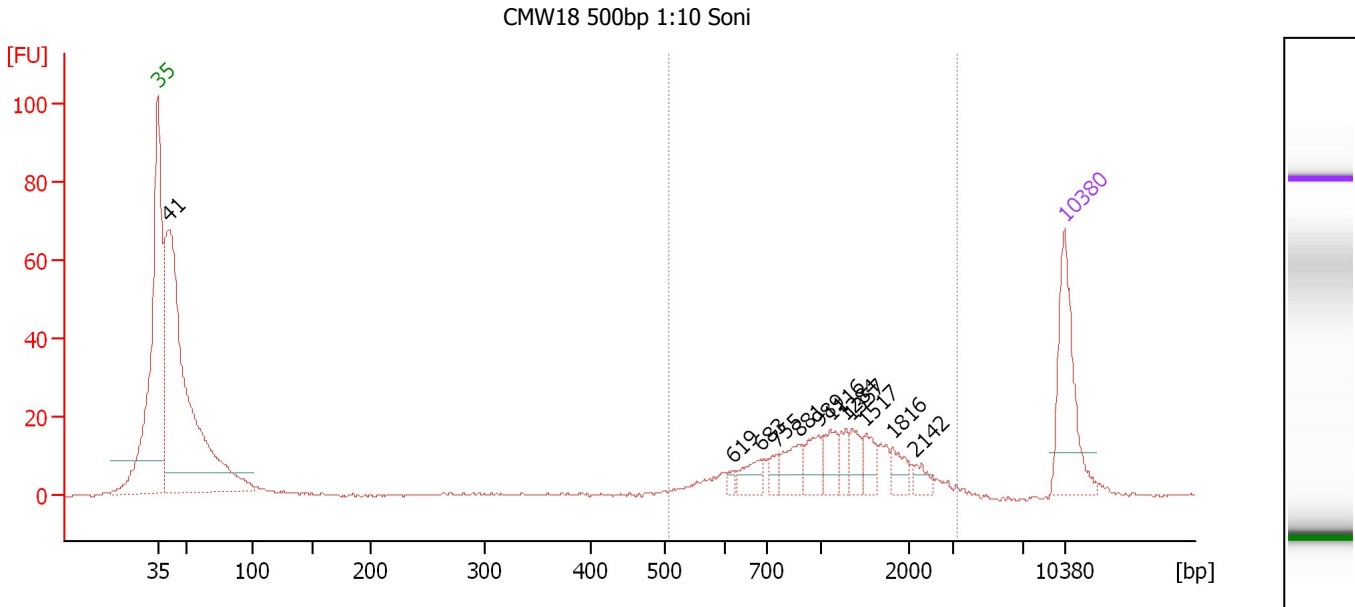
Region table for sample 9 : CMW17 500bp 1:10 Soni

From [bp]	Molarity [pmol/l]	Average Size [bp]	Conc. [pg/μl]	To [bp]	Corr. Area	% of Total	Size distribution in CV [%]	Color
226	444.7	464	119.75	1,000	123.7	52	30.5	Blue

Assay Class: High Sensitivity DNA Assay
 Data Path: C:\...ents and Settings\Bioanalyzer\2012-04-13\2012-04-13_003.xad

Created: 4/13/2012 3:28:37 PM
 Modified: 4/13/2012 4:11:54 PM

Electropherogram Summary Continued ...



Overall Results for sample 10 : CMW18 500bp 1:10 Soni

Number of peaks found: 12 Corr. Area 1: 200.2
 Noise: 0.1

Peak table for sample 10 : CMW18 500bp 1:10 Soni

Peak	Size [bp]	Conc. [pg/μl]	Molarity [pmol/l]	Observations
1	35	125.00	5,411.3	Lower Marker
2	41	627.72	23,138.6	
3	619	5.29	13.0	
4	683	21.80	48.3	
5	755	11.33	22.7	
6	881	27.12	46.7	
7	989	24.07	36.9	
8	1,116	23.22	31.5	
9	1,284	14.15	16.7	
10	1,357	17.03	19.0	
11	1,517	16.69	16.7	
12	1,816	15.03	12.5	
13	2,142	9.16	6.5	
14	10,380	75.00	10.9	Upper Marker

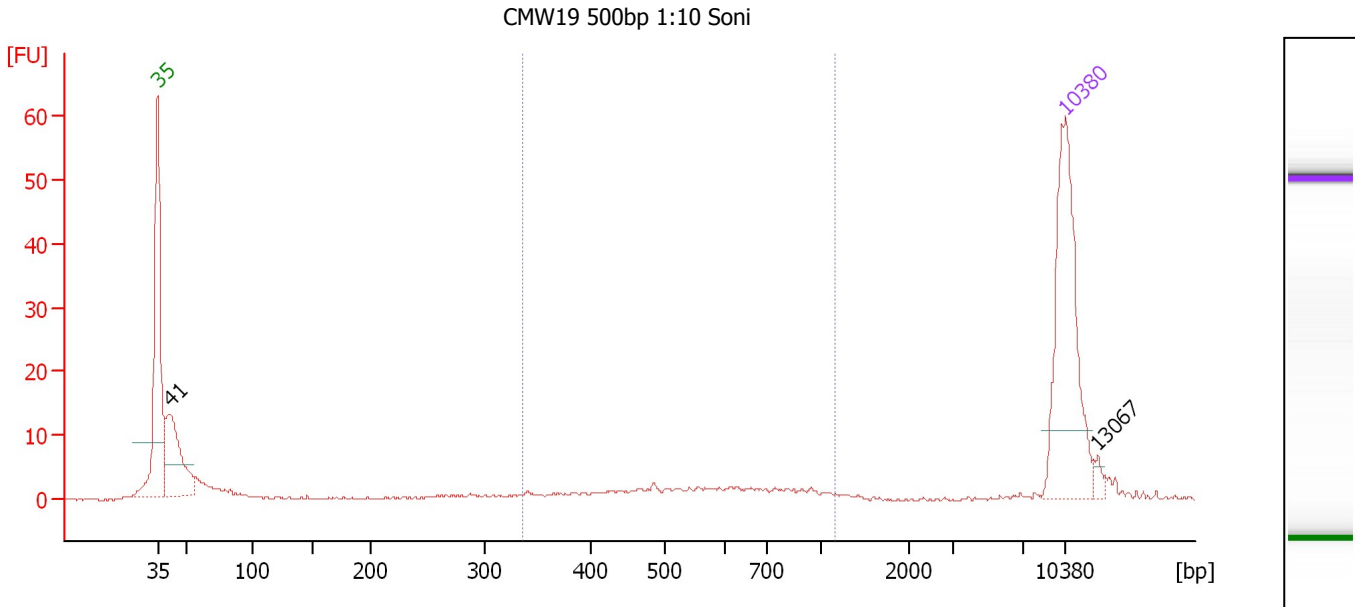
Region table for sample 10 : CMW18 500bp 1:10 Soni

From [bp]	Molarity [pmol/l]	Average Size [bp]	Conc. [pg/μl]	To [bp]	Corr. Area	% of Total	Size distribution in CV [%]	Color
506	337.2	1,238	223.56	3,202	200.2	38	43.3	Blue

Assay Class: High Sensitivity DNA Assay
 Data Path: C:\...ents and Settings\Bioanalyzer\2012-04-13\2012-04-13_003.xad

Created: 4/13/2012 3:28:37 PM
 Modified: 4/13/2012 4:11:54 PM

Electropherogram Summary Continued ...



Overall Results for sample 11 : CMW19 500bp 1:10 Soni

Number of peaks found: 2 Corr. Area 1: 30.5
 Noise: 0.2

Peak table for sample 11 : CMW19 500bp 1:10 Soni

Peak	Size [bp]	Conc. [pg/μl]	Molarity [pmol/l]	Observations
1	35	125.00	5,411.3	Lower Marker
2	41	68.35	2,506.1	
3	10,380	75.00	10.9	Upper Marker
4	13,067	0.00	0.0	

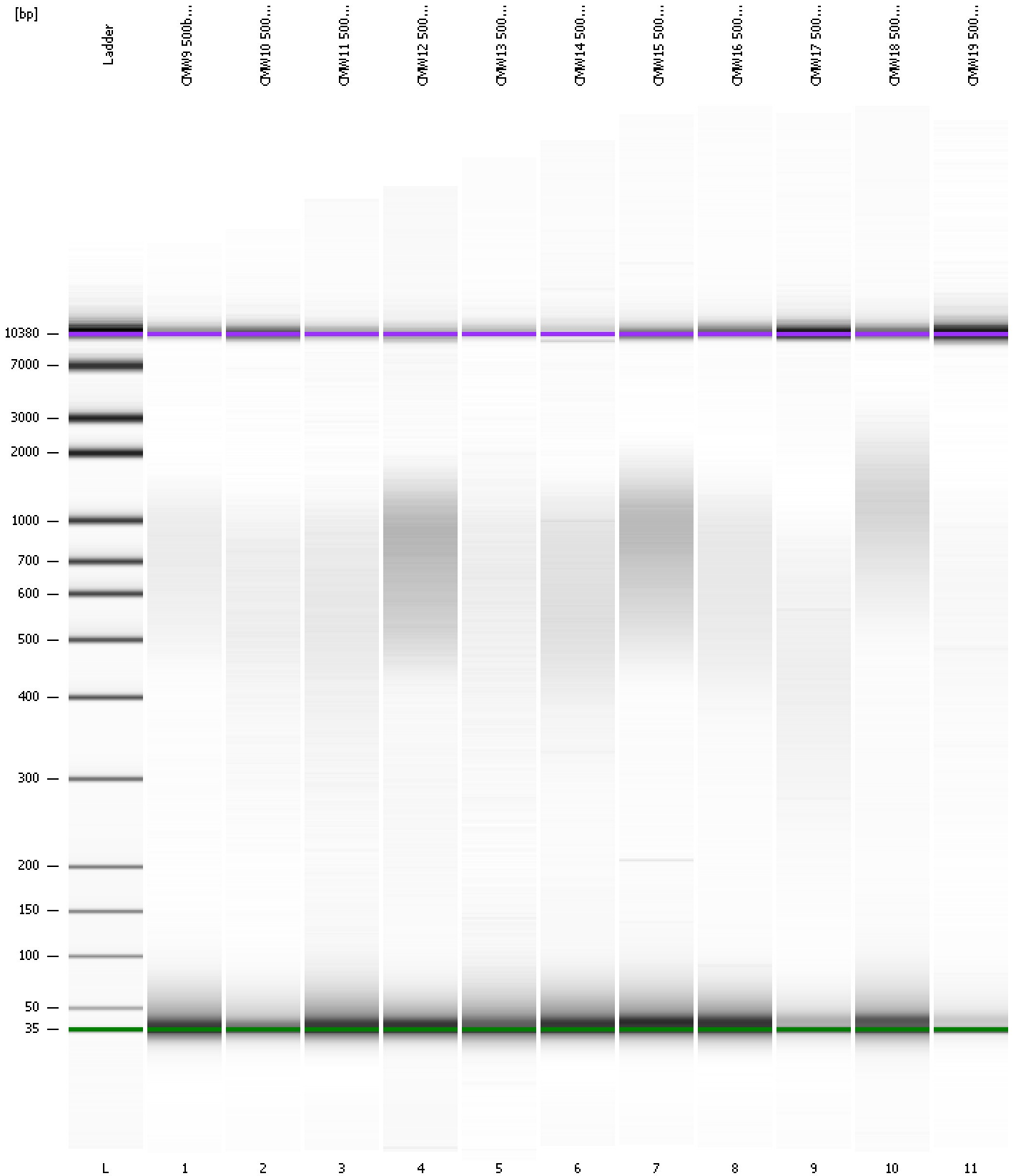
Region table for sample 11 : CMW19 500bp 1:10 Soni

From [bp]	Molarity [pmol/l]	Average Size [bp]	Conc. [pg/μl]	To [bp]	Corr. Area	% of Total	Size distribution in CV [%]	Color
337	91.4	592	31.92	1,165	30.5	30	30.3	Blue

Assay Class: High Sensitivity DNA Assay
Data Path: C:\...ents and Settings\Bioanalyzer\2012-04-13\2012-04-13_003.xad

Created: 4/13/2012 3:28:37 PM
Modified: 4/13/2012 4:11:54 PM

Gel Image



Assay Class: High Sensitivity DNA Assay
 Data Path: C:\...ents and Settings\Bioanalyzer\2012-04-13\2012-04-13_003.xad

Created: 4/13/2012 3:28:37 PM
 Modified: 4/13/2012 4:11:54 PM

Run Logbook

Description	Number	Source	Category	Sub Category	Time	Time Zone	User	Host
Run ended on port 1 (Number of wells acquired: 12)		Instrument	Run		4/13/2012 4:09:57 PM	(GMT --07:00) Pacific Standard Time	UC Davis	D8XSMGH1
Run started on port 1 (File: C:\Documents and Settings\Bioanalyzer\2012-04-13\2012-04-13_003.xad)		Instrument	Run		4/13/2012 3:28:43 PM	(GMT --07:00) Pacific Standard Time	UC Davis	D8XSMGH1
Product Number : G2938B		Instrument	Run		4/13/2012 3:28:43 PM	(GMT --07:00) Pacific Standard Time	UC Davis	D8XSMGH1
Name :		Instrument	Run		4/13/2012 3:28:43 PM	(GMT --07:00) Pacific Standard Time	UC Davis	D8XSMGH1
Vendor : Agilent Technologies		Instrument	Run		4/13/2012 3:28:43 PM	(GMT --07:00) Pacific Standard Time	UC Davis	D8XSMGH1
Serial# : DE13701086		Instrument	Run		4/13/2012 3:28:43 PM	(GMT --07:00) Pacific Standard Time	UC Davis	D8XSMGH1
Firmware : C.01.069		Instrument	Run		4/13/2012 3:28:43 PM	(GMT --07:00) Pacific Standard Time	UC Davis	D8XSMGH1
Cartridge : Electrode		Instrument	Run		4/13/2012 3:28:43 PM	(GMT --07:00) Pacific Standard Time	UC Davis	D8XSMGH1