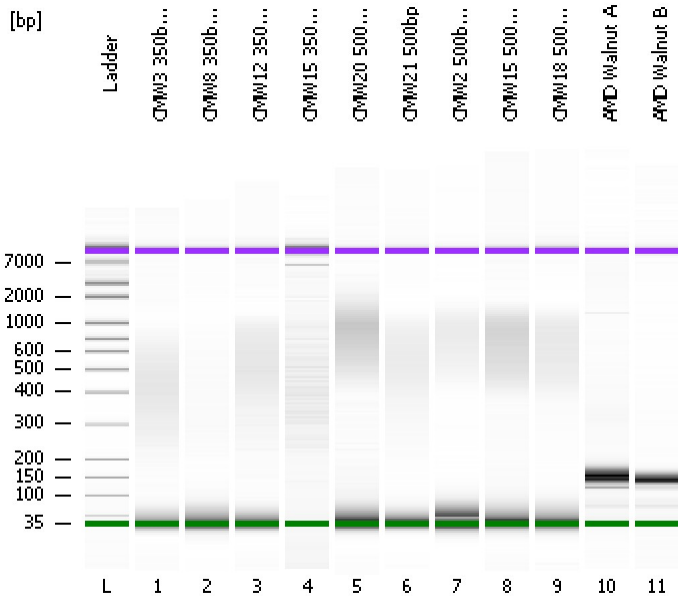


Assay Class: High Sensitivity DNA Assay  
Data Path: C:\...ents and Settings\Bioanalyzer\2012-04-16\2012-04-16\_002.xad

Created: 4/16/2012 2:12:04 PM  
Modified: 4/16/2012 2:54:34 PM

**Electrophoresis File Run Summary**



Instrument Information:

Instrument Name: DE13701086      Firmware: C.01.069  
Serial#: DE13701086      Type: G2938B

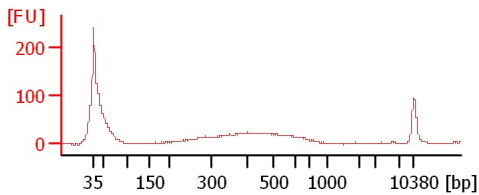
Assay Information:

Assay Origin Path: C:\Program Files\Agilent\2100 bioanalyzer\2100 expert\assays\dsDNA\High Sensitivity DNA.xsy  
Assay Class: High Sensitivity DNA Assay  
Version: 1.03  
Assay Comments: Copyright © 2003-2010 Agilent Technologies

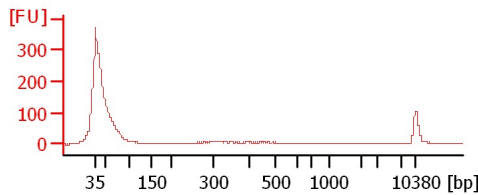
Chip Information:

Chip Lot #:      Reagent Kit Lot #:      Chip Comments:

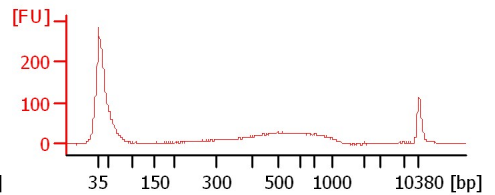
**CMW3 350bp 28Cycles 1:5**



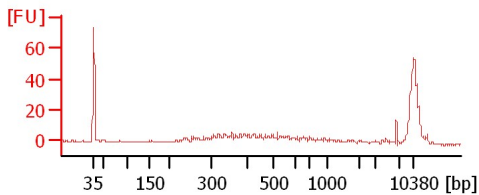
**CMW8 350bp 20Cycles 1:5**



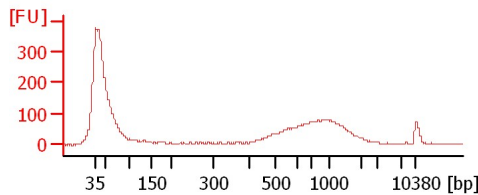
**CMW12 350bp 23Cycles 1:5**



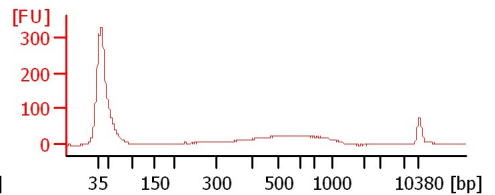
**CMW15 350bp 28Cycles 1:5**



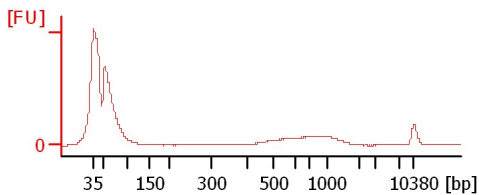
**CMW20 500bp 28Cycles 1:10**



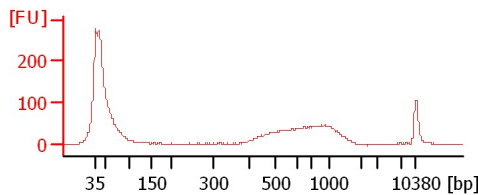
**CMW21 500bp**



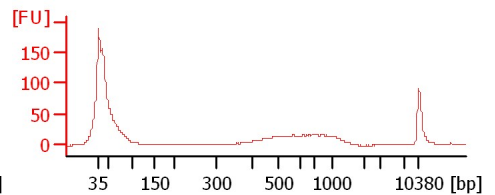
**CMW2 500bp 4Cycles 1:5**



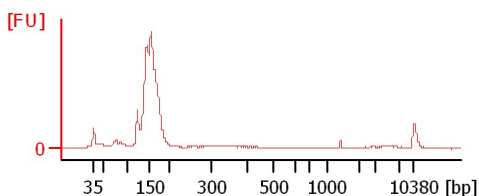
**CMW15 500bp 4Cycles 1:5**



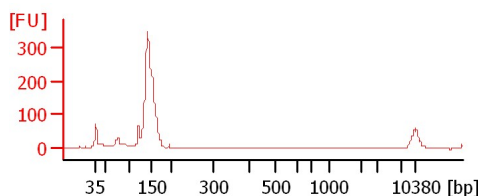
**CMW18 500bp 5Cycles 1:5**



**AMD Walnut A**



**AMD Walnut B**



Assay Class: High Sensitivity DNA Assay  
Data Path: C:\...ents and Settings\Bioanalyzer\2012-04-16\2012-04-16\_002.xad

Created: 4/16/2012 2:12:04 PM  
Modified: 4/16/2012 2:54:34 PM

**Electrophoresis File Run Summary (Chip Summary)**

Sample Name	Sample Comment	Rest. Digest	Status	Observation	Result Label	Result Color
CMW3 350bp 28Cycles 1:5		<input type="checkbox"/>	✓			
CMW8 350bp 20Cycles 1:5		<input type="checkbox"/>	✓			
CMW12 350bp 23Cycles 1:5		<input type="checkbox"/>	✓			
CMW15 350bp 28Cycles 1:5		<input type="checkbox"/>	✓			
CMW20 500bp 28Cycles 1:10		<input type="checkbox"/>	✓			
CMW21 500bp		<input type="checkbox"/>	✓			
CMW2 500bp 4Cycles 1:5		<input type="checkbox"/>	✓			
CMW15 500bp 4Cycles 1:5		<input type="checkbox"/>	✓			
CMW18 500bp 5Cycles 1:5		<input type="checkbox"/>	✓			
AMD Walnut A		<input type="checkbox"/>	✓			
AMD Walnut B		<input type="checkbox"/>	✓			
Ladder		<input type="checkbox"/>	✓			

**Chip Lot #**

**Reagent Kit Lot #**

**Chip Comments :**

Assay Class: High Sensitivity DNA Assay  
Data Path: C:\...ents and Settings\Bioanalyzer\2012-04-16\2012-04-16\_002.xad

Created: 4/16/2012 2:12:04 PM  
Modified: 4/16/2012 2:54:34 PM

**Electrophoresis Assay Details**

**General Analysis Settings**

Number of Available Sample and Ladder Wells (Max.) : 12  
Minimum Visible Range [s] : 32  
Maximum Visible Range [s] : 138  
Start Analysis Time Range [s] : 33  
End Analysis Time Range [s] : 137.5  
Ladder Concentration [pg/μl] : 1950  
Uses Standard Area for Ladder Fragments  
Lower Marker Concentration [pg/μl] : 125  
Upper Marker Concentration [pg/μl] : 75  
Used Upper Marker for Quantitation  
Standard Curve Fit is Point to Point  
Show Data Aligned to Lower and Upper Marker

**Integrator Settings**

Integration Start Time [s] : 33.05  
Integration End Time [s] : 137  
Slope Threshold : 0.8  
Height Threshold [FU] : 5  
Area Threshold : 0.1  
Width Threshold [s] : 0.6  
Baseline Plateau [s] : 0.5

**Filter Settings**

Filter Width [s] : 0.5  
Polynomial Order : 4

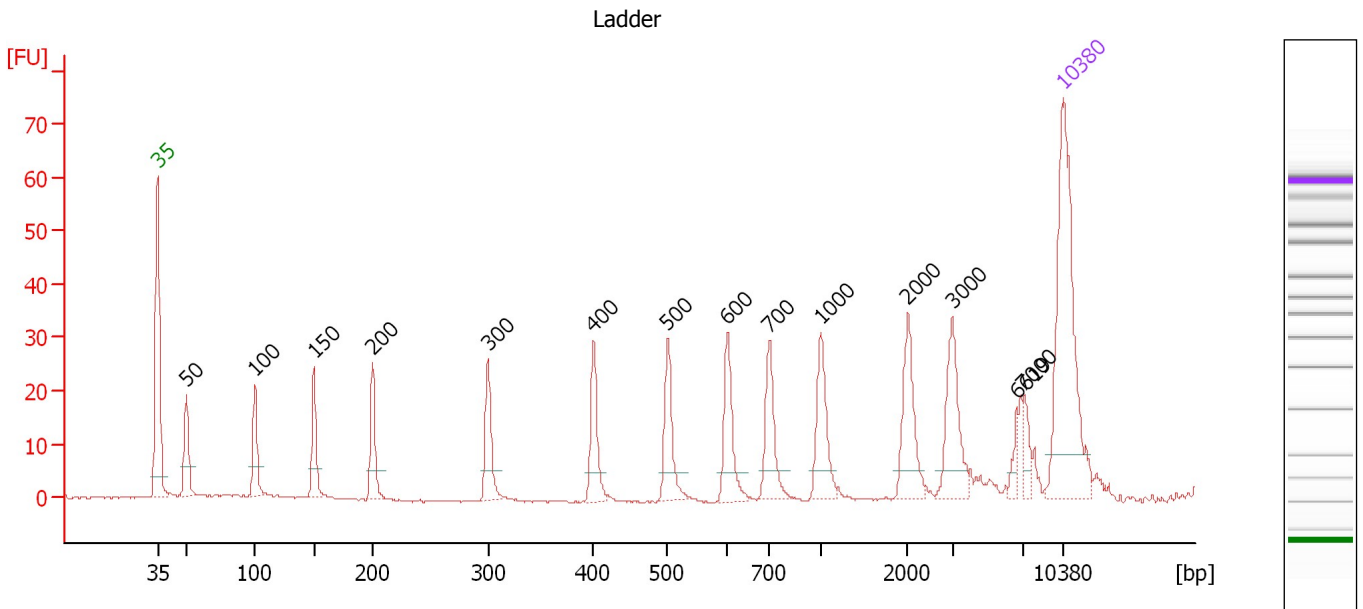
**Ladder**

Ladder Peak	Size	Area
1	35	160
2	50	210
3	100	208
4	150	221
5	200	242
6	300	270
7	400	305
8	500	306
9	600	336
10	700	321
11	1000	366
12	2000	413
13	3000	411
14	7000	400
15	10380	214

Assay Class: High Sensitivity DNA Assay  
 Data Path: C:\...ents and Settings\Bioanalyzer\2012-04-16\2012-04-16\_002.xad

Created: 4/16/2012 2:12:04 PM  
 Modified: 4/16/2012 2:54:34 PM

**Electropherogram Summary**



**Overall Results for Ladder**

Noise: 0.2

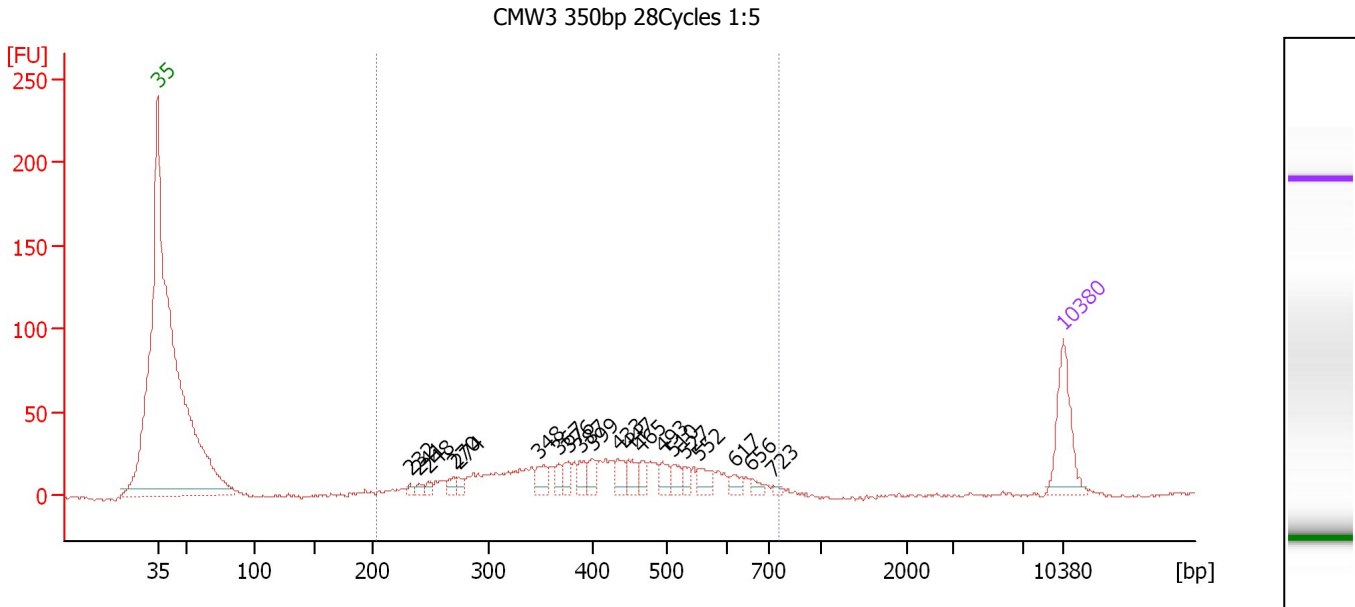
**Peak table for Ladder**

Peak	Size [bp]	Conc. [pg/μl]	Molarity [pmol/l]	Observations
1	35	125.00	5,411.3	Lower Marker
2	50	150.00	4,545.5	Ladder Peak
3	100	150.00	2,272.7	Ladder Peak
4	150	150.00	1,515.2	Ladder Peak
5	200	150.00	1,136.4	Ladder Peak
6	300	150.00	757.6	Ladder Peak
7	400	150.00	568.2	Ladder Peak
8	500	150.00	454.5	Ladder Peak
9	600	150.00	378.8	Ladder Peak
10	700	150.00	324.7	Ladder Peak
11	1,000	150.00	227.3	Ladder Peak
12	2,000	150.00	113.6	Ladder Peak
13	3,000	150.00	75.8	Ladder Peak
14	6,619	0.00	0.0	
15	7,000	150.00	32.5	Ladder Peak
16	10,380	75.00	10.9	Upper Marker

Assay Class: High Sensitivity DNA Assay  
 Data Path: C:\...ents and Settings\Bioanalyzer\2012-04-16\2012-04-16\_002.xad

Created: 4/16/2012 2:12:04 PM  
 Modified: 4/16/2012 2:54:34 PM

**Electropherogram Summary Continued ...**



**Overall Results for sample 1 : CMW3 350bp 28Cycles 1:5**

Number of peaks found: 20                      Corr. Area 1: 559.4  
 Noise: 1.1

**Peak table for sample 1 : CMW3 350bp 28Cycles 1:5**

Peak	Size [bp]	Conc. [pg/µl]	Molarity [pmol/l]	Observations
1	35	125.00	5,411.3	Lower Marker
2	232	6.38	41.7	
3	241	10.25	64.6	
4	248	9.81	59.9	
5	270	14.70	82.4	
6	274	12.97	71.7	
7	348	28.63	124.6	
8	367	16.69	69.0	
9	376	19.99	80.6	
10	387	22.61	88.5	
11	399	21.84	83.0	
12	433	23.58	82.4	
13	447	25.13	85.2	
14	465	17.44	56.9	
15	493	19.76	60.7	
16	510	19.50	57.9	
17	527	14.36	41.3	
18	552	23.67	64.9	
19	617	14.01	34.4	
20	656	9.37	21.7	
21	723	3.90	8.2	
22	10,380	75.00	10.9	Upper Marker

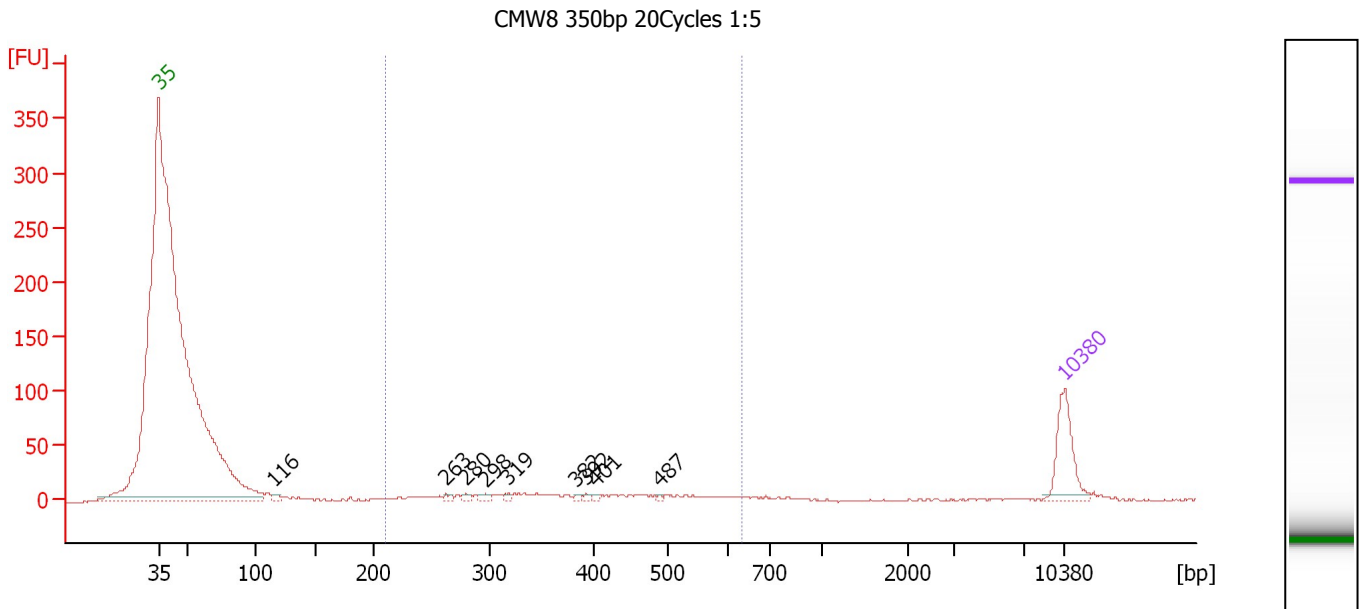
**Region table for sample 1 : CMW3 350bp 28Cycles 1:5**

From [bp]	Molarity [pmol/l]	Average Size [bp]	Conc. [pg/µl]	To [bp]	Corr. Area	% of Total	Size distribution in CV [%]	Color
203	2,394.7	425	600.92	757	559.4	97	26.9	Blue

Assay Class: High Sensitivity DNA Assay  
 Data Path: C:\...ents and Settings\Bioanalyzer\2012-04-16\2012-04-16\_002.xad

Created: 4/16/2012 2:12:04 PM  
 Modified: 4/16/2012 2:54:34 PM

**Electropherogram Summary Continued ...**



**Overall Results for sample 2 : CMW8 350bp 20Cycles 1:5**

Number of peaks found: 9                      Corr. Area 1: 164.5  
 Noise: 0.6

**Peak table for sample 2 : CMW8 350bp 20Cycles 1:5**

Peak	Size [bp]	Conc. [pg/μl]	Molarity [pmol/l]	Observations
1	35	125.00	5,411.3	Lower Marker
2	116	8.47	111.1	
3	263	5.87	33.8	
4	280	6.45	34.9	
5	298	7.46	37.9	
6	319	4.85	23.1	
7	382	3.16	12.5	
8	392	3.72	14.4	
9	401	3.08	11.6	
10	487	2.78	8.6	
11	10,380	75.00	10.9	Upper Marker

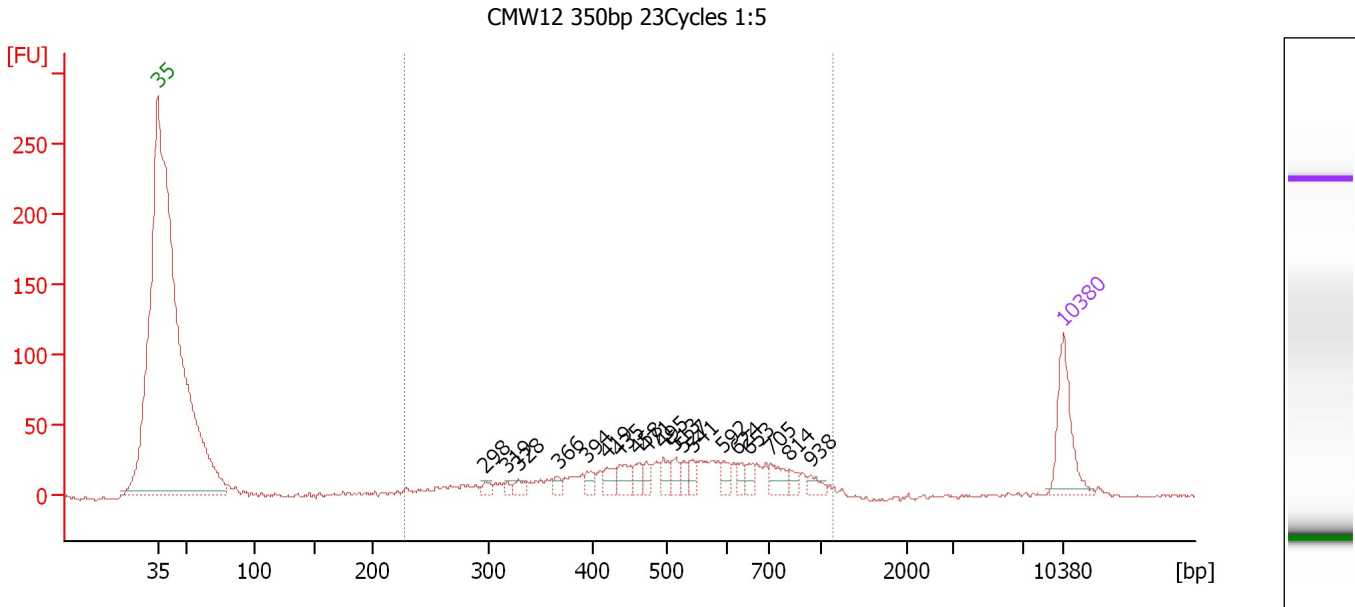
**Region table for sample 2 : CMW8 350bp 20Cycles 1:5**

From [bp]	Molarity [pmol/l]	Average Size [bp]	Conc. [pg/μl]	To [bp]	Corr. Area	% of Total	Size distribution in CV [%]	Color
211	635.2	383	143.96	631	164.5	75	27.4	Blue

Assay Class: High Sensitivity DNA Assay  
 Data Path: C:\...ents and Settings\Bioanalyzer\2012-04-16\2012-04-16\_002.xad

Created: 4/16/2012 2:12:04 PM  
 Modified: 4/16/2012 2:54:34 PM

**Electropherogram Summary Continued ...**



**Setpoint Deviations for sample 3 : CMW12 350bp 23Cycles 1:5**

Height Threshold [FU] : 10

**Overall Results for sample 3 : CMW12 350bp 23Cycles 1:5**

Number of peaks found: 19                      Corr. Area 1: 646.4  
 Noise: 0.5


**Peak table for sample 3 : CMW12 350bp 23Cycles 1:5**

Peak	Size [bp]	Conc. [pg/μl]	Molarity [pmol/l]	Observations
1	35	125.00	5,411.3	Lower Marker
2	298	11.30	57.5	
3	319	7.37	35.0	
4	328	13.83	63.8	
5	366	9.99	41.4	
6	394	16.57	63.7	
7	419	20.99	76.0	
8	435	30.50	106.2	
9	458	18.05	59.7	
10	471	16.05	51.6	
11	495	21.73	66.5	
12	513	18.12	53.5	
13	527	14.57	41.9	
14	541	14.58	40.8	
15	592	18.09	46.3	
16	624	13.27	32.2	
17	653	13.32	30.9	
18	705	26.21	56.3	
19	814	12.42	23.1	
20	938	12.91	20.9	
21	10,380	75.00	10.9	Upper Marker

Assay Class: High Sensitivity DNA Assay  
Data Path: C:\...ents and Settings\Bioanalyzer\2012-04-16\2012-04-16\_002.xad

Created: 4/16/2012 2:12:04 PM  
Modified: 4/16/2012 2:54:34 PM

**Electropherogram Summary Continued ...****... Region table for sample 3 : CMW12 350bp 23Cycles 1:5**

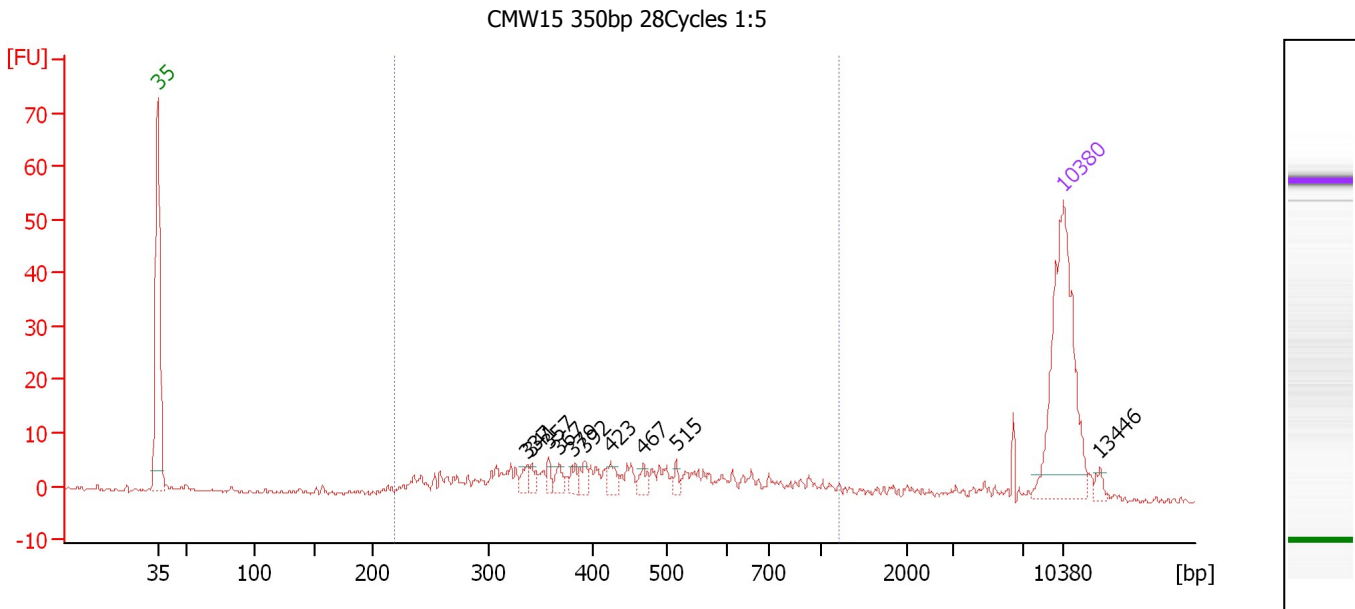
<b>From [bp]</b>	<b>Molarity [pmol/l]</b>	<b>Average Size [bp]</b>	<b>Conc. [pg/μl]</b>	<b>To [bp]</b>	<b>Corr. Area</b>	<b>% of Total</b>	<b>Size distribution in CV [%]</b>	<b>Co lor</b>
228	1,858.7	528	550.29	1,149	646.4	91	33.7	



Assay Class: High Sensitivity DNA Assay  
 Data Path: C:\...ents and Settings\Bioanalyzer\2012-04-16\2012-04-16\_002.xad

Created: 4/16/2012 2:12:04 PM  
 Modified: 4/16/2012 2:54:34 PM

**Electropherogram Summary Continued ...**



**Overall Results for sample 4 : CMW15 350bp 28Cycles 1:5**

Number of peaks found: 10      Corr. Area 1: 145.4  
 Noise: 0.4

**Peak table for sample 4 : CMW15 350bp 28Cycles 1:5**

Peak	Size [bp]	Conc. [pg/μl]	Molarity [pmol/l]	Observations
1	35	125.00	5,411.3	Lower Marker
2	337	4.71	21.2	
3	341	4.51	20.0	
4	357	4.21	17.8	
5	367	5.44	22.5	
6	379	5.93	23.7	
7	392	5.38	20.8	
8	423	6.19	22.2	
9	467	5.07	16.5	
10	515	3.17	9.3	
11	10,380	75.00	10.9	Upper Marker
12	13,446	0.00	0.0	

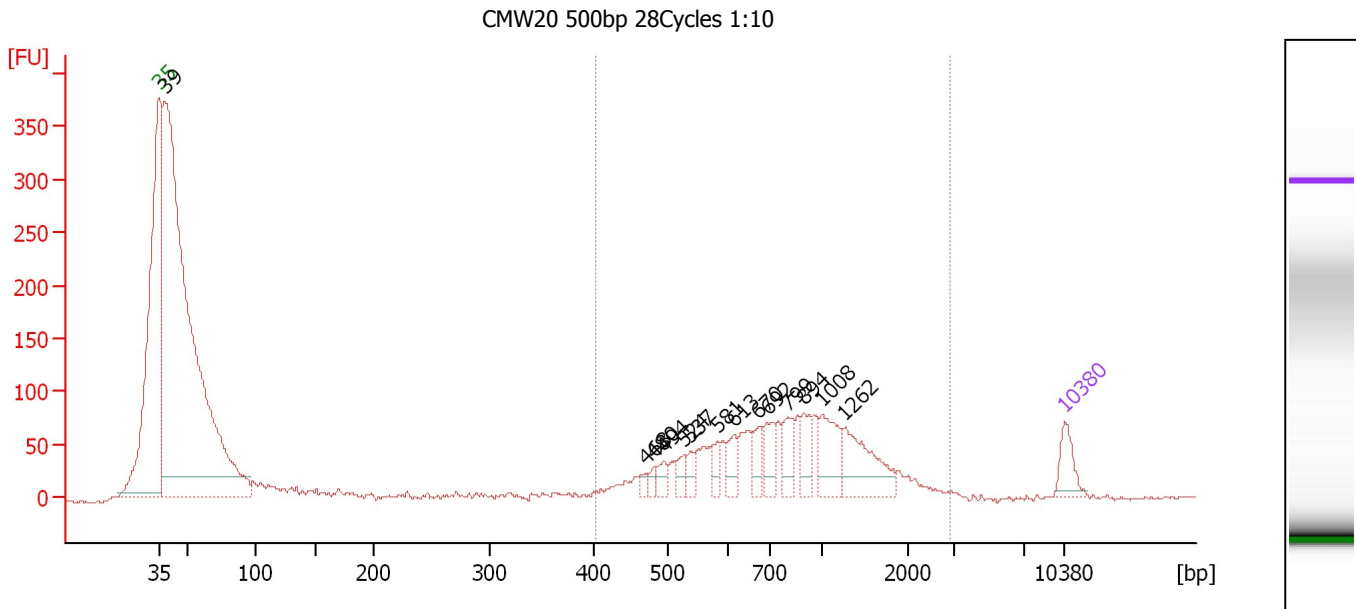
**Region table for sample 4 : CMW15 350bp 28Cycles 1:5**

From [bp]	Molarity [pmol/l]	Average Size [bp]	Conc. [pg/μl]	To [bp]	Corr. Area	% of Total	Size distribution in CV [%]	Color
219	618.8	476	161.29	1,218	145.4	83	40.2	Blue

Assay Class: High Sensitivity DNA Assay  
 Data Path: C:\...ents and Settings\Bioanalyzer\2012-04-16\2012-04-16\_002.xad

Created: 4/16/2012 2:12:04 PM  
 Modified: 4/16/2012 2:54:34 PM

**Electropherogram Summary Continued ...**



**Setpoint Deviations for sample 5 : CMW20 500bp 28Cycles 1:10**

Height Threshold [FU] : 20

**Overall Results for sample 5 : CMW20 500bp 28Cycles 1:10**

Number of peaks found: 14                      Corr. Area 1: 1,242.7  
 Noise: 0.8

**Peak table for sample 5 : CMW20 500bp 28Cycles 1:10**

Peak	Size [bp]	Conc. [pg/μl]	Molarity [pmol/l]	Observations
1	35	125.00	5,411.3	Lower Marker
2	39	4,666.94	183,010.8	
3	468	25.43	82.3	
4	480	29.22	92.2	
5	494	50.40	154.6	
6	524	55.05	159.2	
7	537	43.39	122.5	
8	581	49.51	129.2	
9	613	73.15	180.8	
10	670	70.94	160.4	
11	692	96.71	211.6	
12	799	102.01	193.5	
13	894	96.55	163.6	
14	1,008	162.87	244.8	
15	1,262	220.37	264.6	
16	10,380	75.00	10.9	Upper Marker

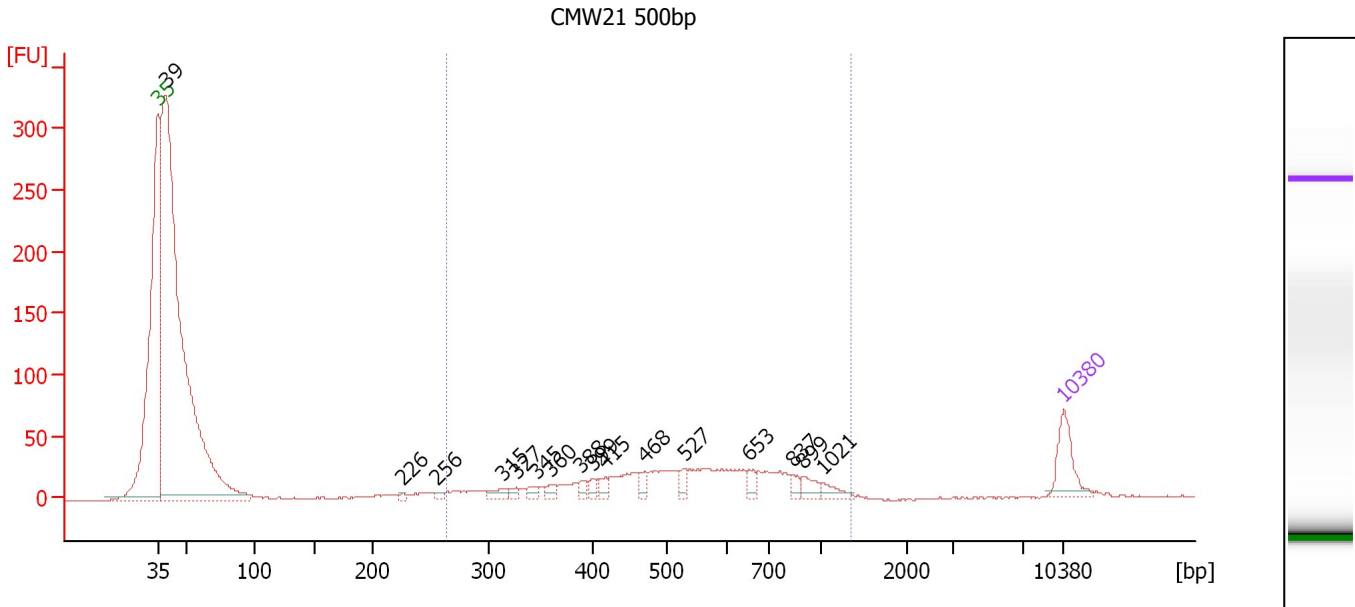
**Region table for sample 5 : CMW20 500bp 28Cycles 1:10**

From [bp]	Molarity [pmol/l]	Average Size [bp]	Conc. [pg/μl]	To [bp]	Corr. Area	% of Total	Size distribution in CV [%]	Color
402	3,297.1	912	1,602.47	2,932	1,242.7	36	47.3	Blue

Assay Class: High Sensitivity DNA Assay  
 Data Path: C:\...ents and Settings\Bioanalyzer\2012-04-16\2012-04-16\_002.xad

Created: 4/16/2012 2:12:04 PM  
 Modified: 4/16/2012 2:54:34 PM

**Electropherogram Summary Continued ...**



**Overall Results for sample 6 : CMW21 500bp**

Number of peaks found: 16                      Corr. Area 1: 538.9  
 Noise: 0.5

**Peak table for sample 6 : CMW21 500bp**

Peak	Size [bp]	Conc. [pg/μl]	Molarity [pmol/l]	Observations
1	35	125.00	5,411.3	Lower Marker
2	39	2,763.77	106,730.8	
3	226	7.30	49.0	
4	256	10.62	62.8	
5	315	26.45	127.3	
6	327	15.41	71.5	
7	345	19.58	85.9	
8	360	17.56	73.9	
9	388	17.54	68.5	
10	399	17.54	66.6	
11	415	19.92	72.8	
12	468	22.77	73.7	
13	527	23.40	67.2	
14	653	21.44	49.8	
15	837	18.19	32.9	
16	899	26.46	44.6	
17	1,021	22.07	32.7	
18	10,380	75.00	10.9	Upper Marker

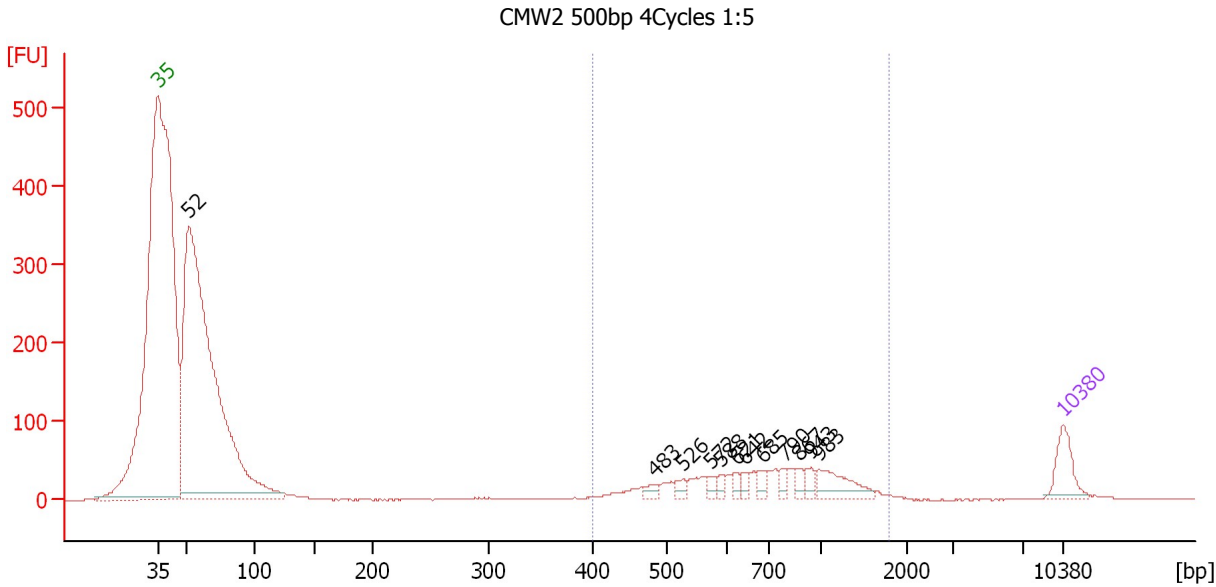
**Region table for sample 6 : CMW21 500bp**

From [bp]	Molarity [pmol/l]	Average Size [bp]	Conc. [pg/μl]	To [bp]	Corr. Area	% of Total	Size distribution in CV [%]	Color
264	2,010.3	569	649.62	1,348	538.9	28	34.4	Blue

Assay Class: High Sensitivity DNA Assay  
 Data Path: C:\...ents and Settings\Bioanalyzer\2012-04-16\2012-04-16\_002.xad

Created: 4/16/2012 2:12:04 PM  
 Modified: 4/16/2012 2:54:34 PM

**Electropherogram Summary Continued ...**



**Setpoint Deviations for sample 7 : CMW2 500bp 4Cycles 1:5**

Height Threshold [FU] : 10

**Overall Results for sample 7 : CMW2 500bp 4Cycles 1:5**

Number of peaks found: 12                      Corr. Area 1: 647.1  
 Noise: 0.4

**Peak table for sample 7 : CMW2 500bp 4Cycles 1:5**

Peak	Size [bp]	Conc. [pg/μl]	Molarity [pmol/l]	Observations
1	35	125.00	5,411.3	Lower Marker
2	52	2,765.60	80,687.1	
3	483	22.95	72.0	
4	526	24.07	69.3	
5	572	19.06	50.5	
6	588	18.17	46.8	
7	621	19.20	46.9	
8	642	21.35	50.4	
9	685	23.20	51.3	
10	790	21.65	41.5	
11	867	27.18	47.5	
12	943	25.85	41.5	
13	983	91.82	141.5	
14	10,380	75.00	10.9	Upper Marker

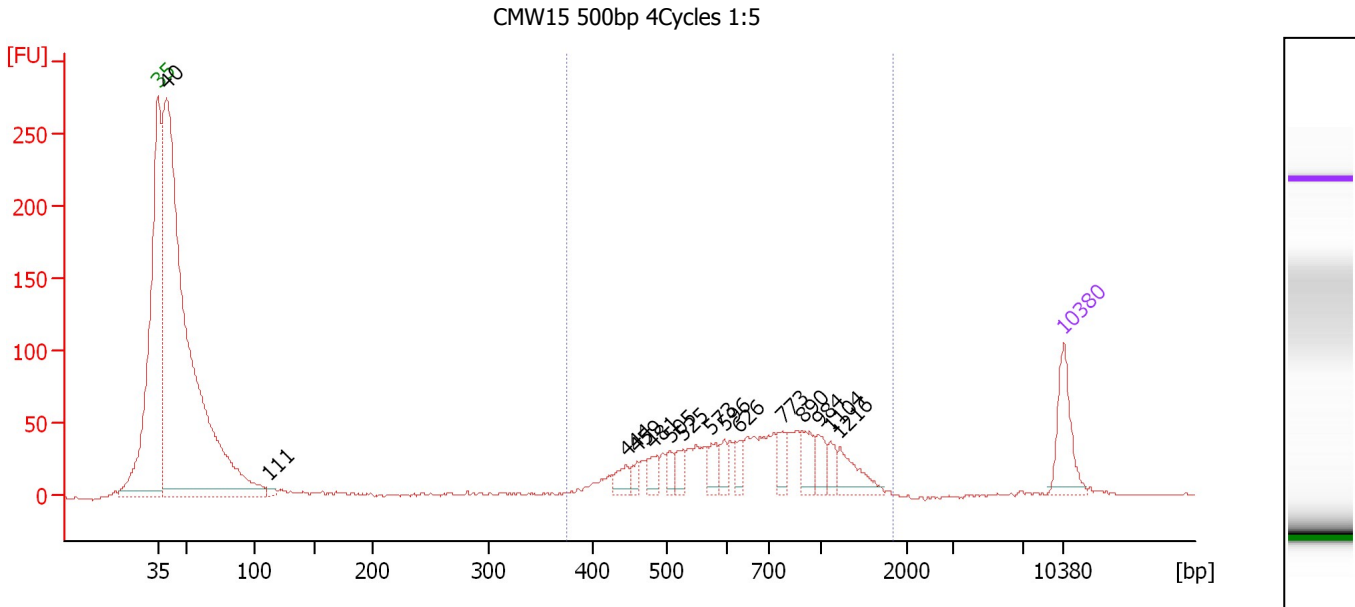
**Region table for sample 7 : CMW2 500bp 4Cycles 1:5**

From [bp]	Molarity [pmol/l]	Average Size [bp]	Conc. [pg/μl]	To [bp]	Corr. Area	% of Total	Size distribution in CV [%]	Color
399	1,168.9	782	520.26	1,780	647.1	23	37.5	Blue

Assay Class: High Sensitivity DNA Assay  
 Data Path: C:\...ents and Settings\Bioanalyzer\2012-04-16\2012-04-16\_002.xad

Created: 4/16/2012 2:12:04 PM  
 Modified: 4/16/2012 2:54:34 PM

**Electropherogram Summary Continued ...**



**Overall Results for sample 8 : CMW15 500bp 4Cycles 1:5**

Number of peaks found: 15                      Corr. Area 1: 750.7  
 Noise: 0.5

**Peak table for sample 8 : CMW15 500bp 4Cycles 1:5**

Peak	Size [bp]	Conc. [pg/μl]	Molarity [pmol/l]	Observations
1	35	125.00	5,411.3	Lower Marker
2	40	2,114.85	80,573.3	
3	111	10.28	139.8	
4	444	29.16	99.5	
5	459	16.85	55.6	
6	481	29.61	93.3	
7	505	22.46	67.4	
8	525	24.22	69.9	
9	573	32.97	87.2	
10	596	24.05	61.2	
11	626	24.63	59.6	
12	773	31.84	62.4	
13	890	41.23	70.2	
14	984	32.41	49.9	
15	1,104	23.26	31.9	
16	1,216	50.15	62.5	
17	10,380	75.00	10.9	Upper Marker

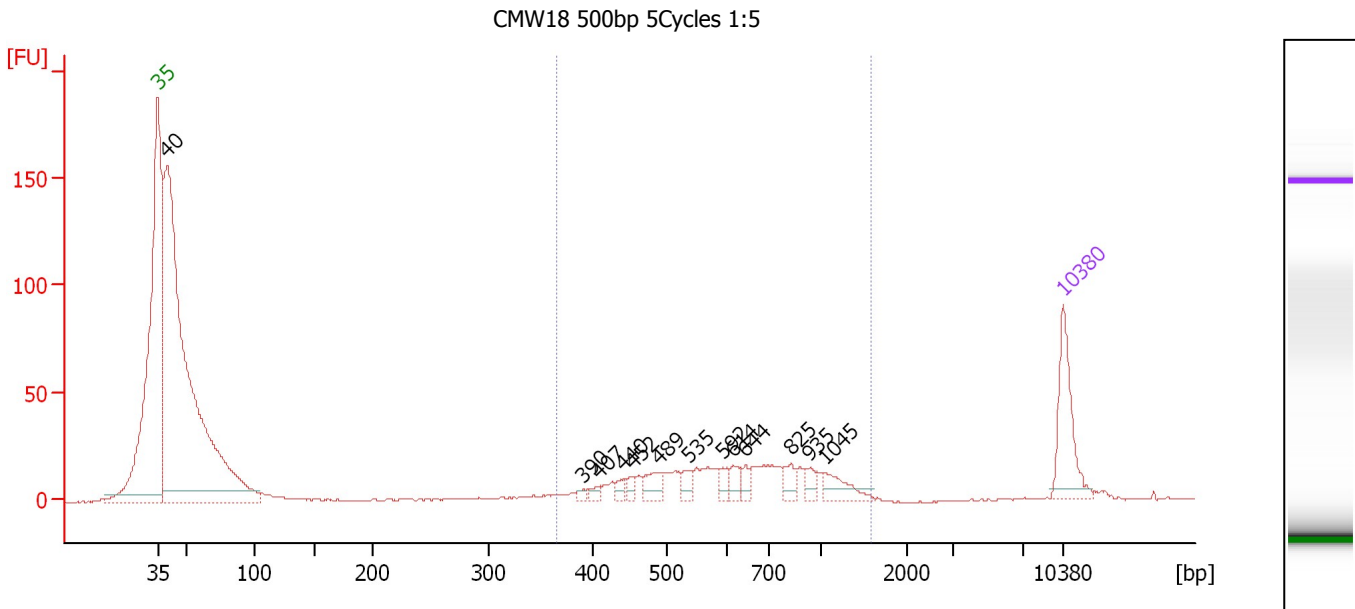
**Region table for sample 8 : CMW15 500bp 4Cycles 1:5**

From [bp]	Molarity [pmol/l]	Average Size [bp]	Conc. [pg/μl]	To [bp]	Corr. Area	% of Total	Size distribution in CV [%]	Color
375	1,599.3	741	674.61	1,824	750.7	35	37.6	Blue

Assay Class: High Sensitivity DNA Assay  
 Data Path: C:\...ents and Settings\Bioanalyzer\2012-04-16\2012-04-16\_002.xad

Created: 4/16/2012 2:12:04 PM  
 Modified: 4/16/2012 2:54:34 PM

**Electropherogram Summary Continued ...**



**Overall Results for sample 9 : CMW18 500bp 5Cycles 1:5**

Number of peaks found: 13                      Corr. Area 1: 311.2  
 Noise: 0.2

**Peak table for sample 9 : CMW18 500bp 5Cycles 1:5**

Peak	Size [bp]	Conc. [pg/μl]	Molarity [pmol/l]	Observations
1	35	125.00	5,411.3	Lower Marker
2	40	1,360.20	51,329.8	
3	390	5.61	21.8	
4	407	8.77	32.7	
5	440	9.01	31.0	
6	452	10.32	34.6	
7	489	27.13	84.0	
8	535	16.27	46.1	
9	592	13.63	34.9	
10	614	17.65	43.5	
11	644	12.00	28.3	
12	825	16.79	30.9	
13	935	13.76	22.3	
14	1,045	28.73	41.7	
15	10,380	75.00	10.9	Upper Marker

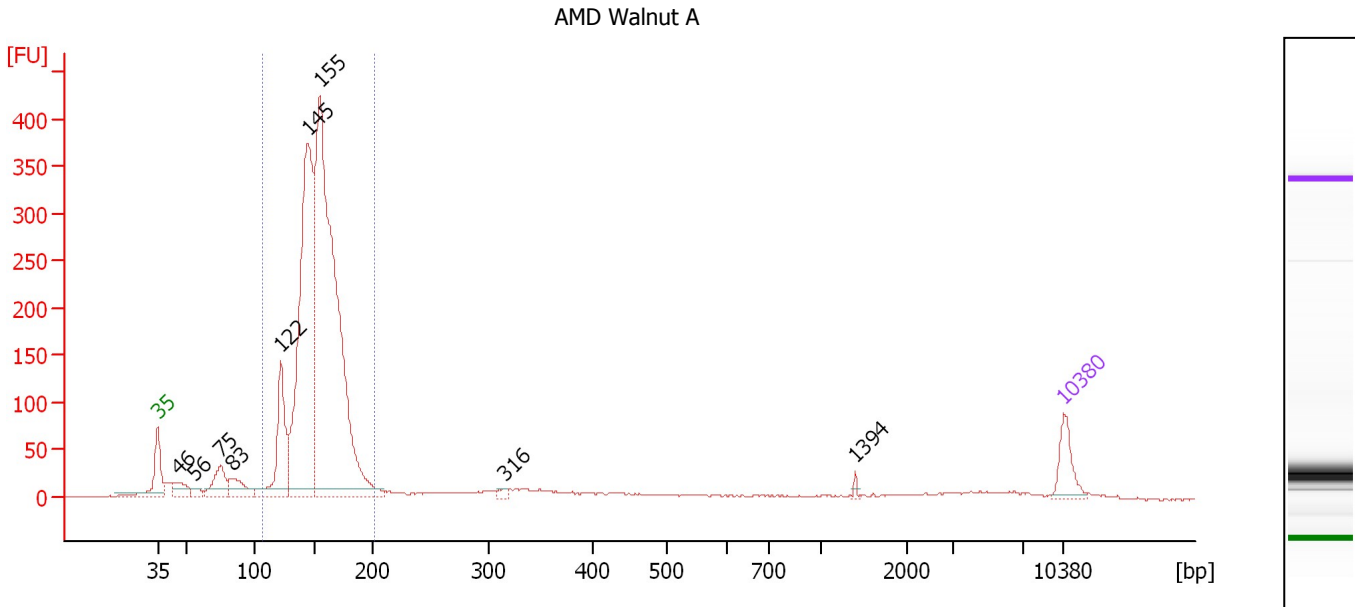
**Region table for sample 9 : CMW18 500bp 5Cycles 1:5**

From [bp]	Molarity [pmol/l]	Average Size [bp]	Conc. [pg/μl]	To [bp]	Corr. Area	% of Total	Size distribution in CV [%]	Color
365	845.3	678	330.39	1,576	311.2	28	35.8	Blue

Assay Class: High Sensitivity DNA Assay  
 Data Path: C:\...ents and Settings\Bioanalyzer\2012-04-16\2012-04-16\_002.xad

Created: 4/16/2012 2:12:04 PM  
 Modified: 4/16/2012 2:54:34 PM

**Electropherogram Summary Continued ...**



**Setpoint Deviations for sample 10 : AMD Walnut A**

Height Threshold [FU] : 10

**Overall Results for sample 10 : AMD Walnut A**

Number of peaks found: 9                      Corr. Area 1: 2,425.3  
 Noise: 0.4

**Peak table for sample 10 : AMD Walnut A**

Peak	Size [bp]	Conc. [pg/μl]	Molarity [pmol/l]	Observations
1	35	125.00	5,411.3	Lower Marker
2	46	72.27	2,366.1	
3	56	29.81	810.5	
4	75	129.75	2,617.8	
5	83	105.29	1,918.9	
6	122	332.77	4,141.1	
7	145	1,350.01	14,106.5	
8	155	2,269.84	22,193.0	
9	316	15.88	76.2	
10	1,394	7.37	8.0	
11	10,380	75.00	10.9	Upper Marker

**Region table for sample 10 : AMD Walnut A**

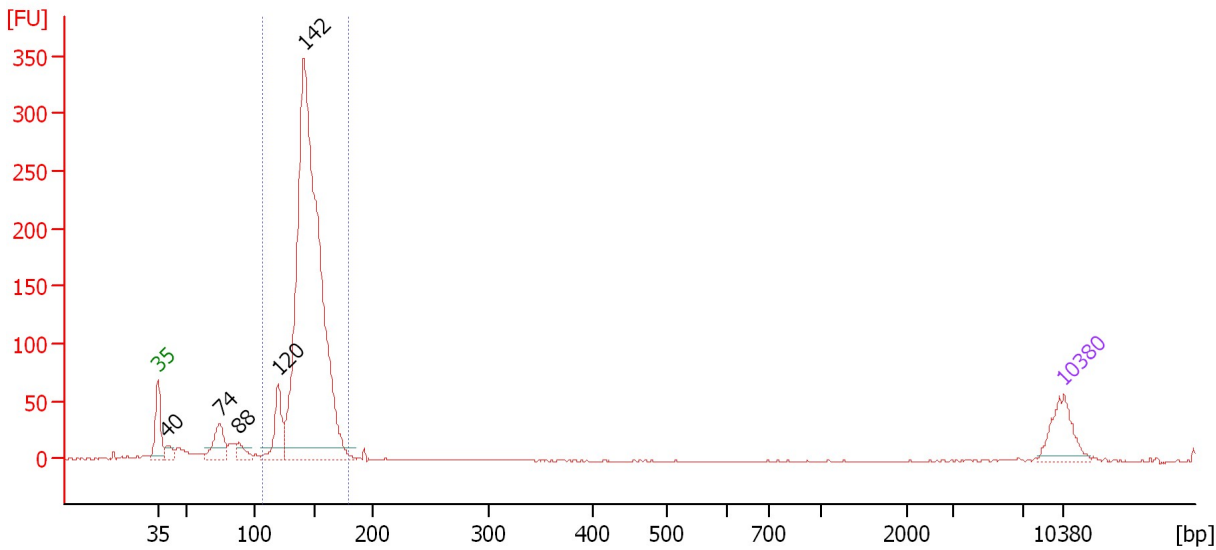
From [bp]	Molarity [pmol/l]	Average Size [bp]	Conc. [pg/μl]	To [bp]	Corr. Area	% of Total	Size distribution in CV [%]	Color
107	38,360.1	153	3,842.29	202	2,425.3	84	10.5	Blue

Assay Class: High Sensitivity DNA Assay  
 Data Path: C:\...ents and Settings\Bioanalyzer\2012-04-16\2012-04-16\_002.xad

Created: 4/16/2012 2:12:04 PM  
 Modified: 4/16/2012 2:54:34 PM

**Electropherogram Summary Continued ...**

AMD Walnut B



**Setpoint Deviations for sample 11 : AMD Walnut B**

Height Threshold [FU] : 10

**Overall Results for sample 11 : AMD Walnut B**

Number of peaks found: 5                      Corr. Area 1: 1,359.9  
 Noise: 0.3

**Peak table for sample 11 : AMD Walnut B**

Peak	Size [bp]	Conc. [pg/μl]	Molarity [pmol/l]	Observations
1	35	125.00	5,411.3	Lower Marker
2	40	29.00	1,099.5	
3	74	101.27	2,060.0	
4	88	39.16	672.8	
5	120	134.04	1,694.2	
6	142	1,926.25	20,580.8	
7	10,380	75.00	10.9	Upper Marker

**Region table for sample 11 : AMD Walnut B**

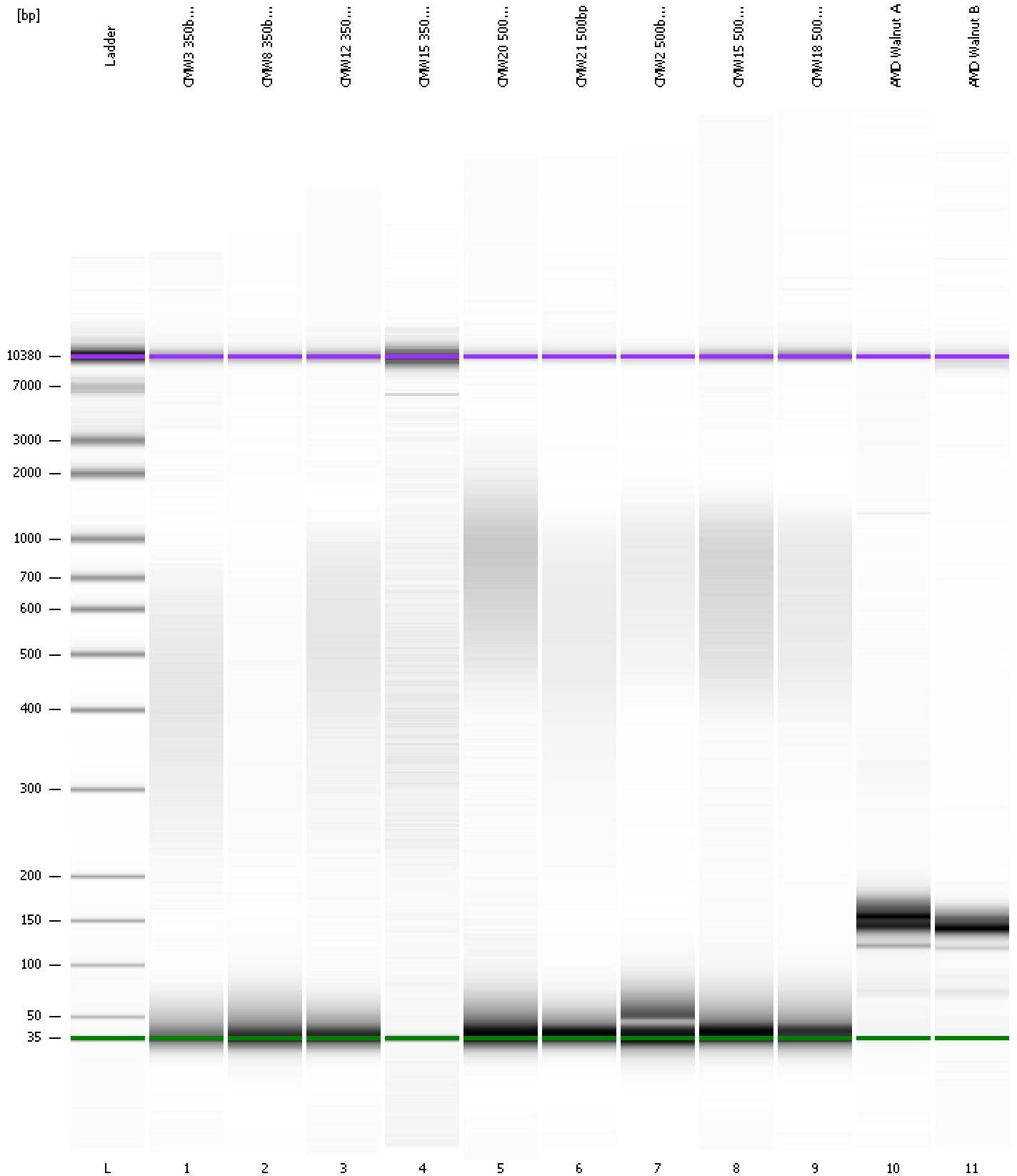
From [bp]	Molarity [pmol/l]	Average Size [bp]	Conc. [pg/μl]	To [bp]	Corr. Area	% of Total	Size distribution in CV [%]	Color
106	21,004.0	145	2,004.15	179	1,359.9	89	8.0	Blue



Assay Class: High Sensitivity DNA Assay  
Data Path: C:\...ents and Settings\Bioanalyzer\2012-04-16\2012-04-16\_002.xad

Created: 4/16/2012 2:12:04 PM  
Modified: 4/16/2012 2:54:34 PM

**Gel Image**



Assay Class: High Sensitivity DNA Assay  
 Data Path: C:\...ents and Settings\Bioanalyzer\2012-04-16\2012-04-16\_002.xad

Created: 4/16/2012 2:12:04 PM  
 Modified: 4/16/2012 2:54:34 PM

**Run Logbook**

Description	Number	Source	Category	Sub Category	Time	Time Zone	User	Host
Run ended on port 1 (Number of wells acquired: 12)		Instrument	Run		4/16/2012 2:53:23 PM	(GMT --07:00) Pacific Standard Time	UC Davis	D8XSMGH1
Run started on port 1 (File: C:\Documents and Settings\Bioanalyzer\2012-04-16\2012-04-16_002.xad)		Instrument	Run		4/16/2012 2:12:10 PM	(GMT --07:00) Pacific Standard Time	UC Davis	D8XSMGH1
Product Number : G2938B		Instrument	Run		4/16/2012 2:12:10 PM	(GMT --07:00) Pacific Standard Time	UC Davis	D8XSMGH1
Name :		Instrument	Run		4/16/2012 2:12:10 PM	(GMT --07:00) Pacific Standard Time	UC Davis	D8XSMGH1
Vendor : Agilent Technologies		Instrument	Run		4/16/2012 2:12:10 PM	(GMT --07:00) Pacific Standard Time	UC Davis	D8XSMGH1
Serial# : DE13701086		Instrument	Run		4/16/2012 2:12:10 PM	(GMT --07:00) Pacific Standard Time	UC Davis	D8XSMGH1
Firmware : C.01.069		Instrument	Run		4/16/2012 2:12:10 PM	(GMT --07:00) Pacific Standard Time	UC Davis	D8XSMGH1
Cartridge : Electrode		Instrument	Run		4/16/2012 2:12:10 PM	(GMT --07:00) Pacific Standard Time	UC Davis	D8XSMGH1