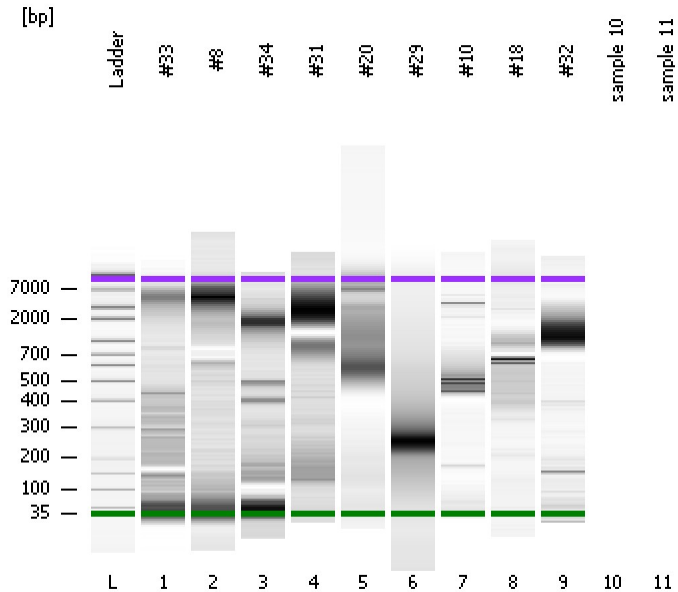


Assay Class: High Sensitivity DNA Assay
Data Path: C:\...ents and Settings\Bioanalyzer\2012-04-17\2012-04-17_001.xad

Created: 4/17/2012 9:09:02 AM
Modified: 4/17/2012 9:51:04 AM

Electrophoresis File Run Summary



Instrument Information:

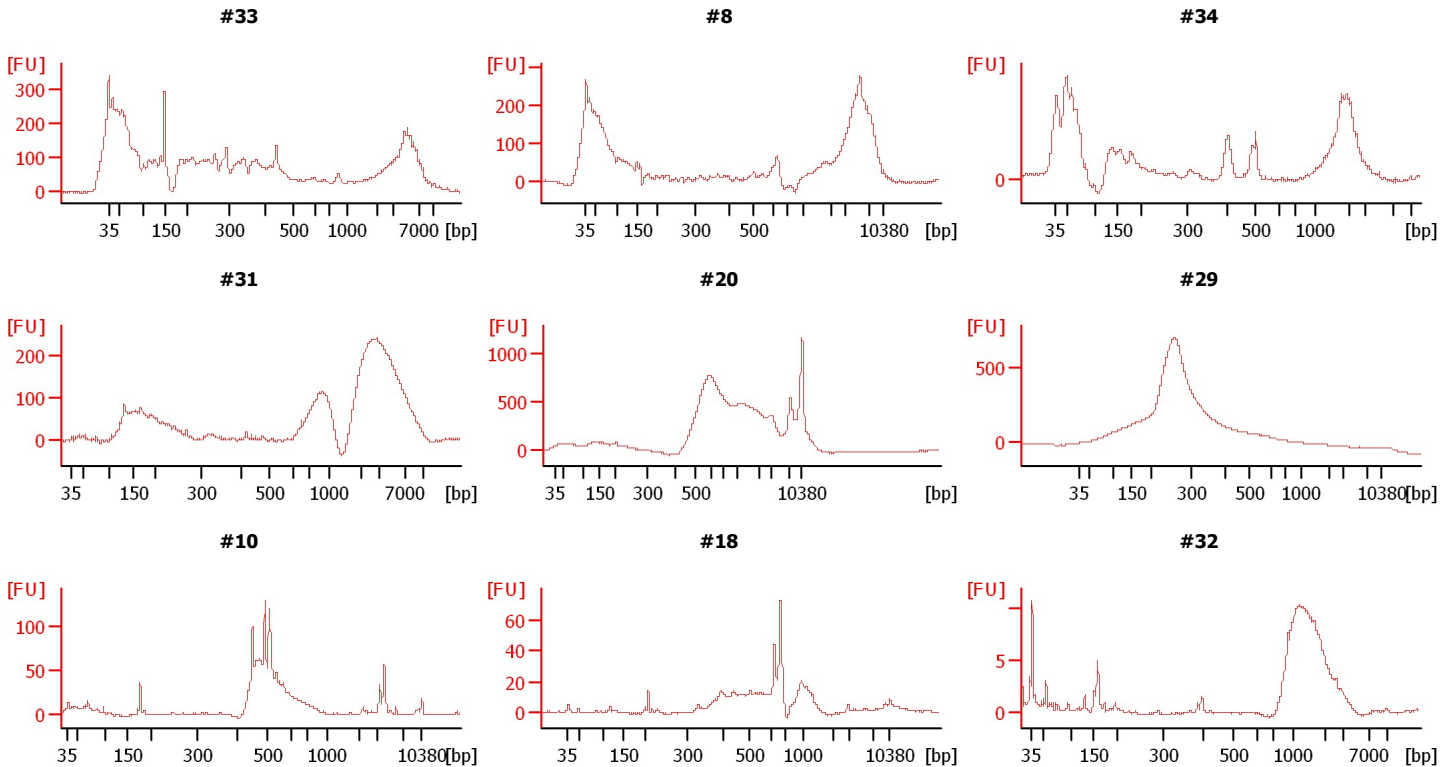
Instrument Name: DE13701086 Firmware: C.01.069
Serial#: DE13701086 Type: G2938B

Assay Information:

Assay Origin Path: C:\Program Files\Agilent\2100 bioanalyzer\2100 expert\assays\dsDNA\High Sensitivity DNA.xsy
Assay Class: High Sensitivity DNA Assay
Version: 1.03
Assay Comments: Copyright © 2003-2010 Agilent Technologies

Chip Information:

Chip Lot #:
Reagent Kit Lot #:
Chip Comments:



Assay Class: High Sensitivity DNA Assay
Data Path: C:\...ents and Settings\Bioanalyzer\2012-04-17\2012-04-17_001.xad

Created: 4/17/2012 9:09:02 AM
Modified: 4/17/2012 9:51:04 AM

Electrophoresis File Run Summary (Chip Summary)

Sample Name	Sample Comment	Rest. Digest	Status	Observation	Result Label	Result Color
#33		<input type="checkbox"/>	✓			
#8		<input type="checkbox"/>	✓			
#34		<input type="checkbox"/>	✓			
#31		<input type="checkbox"/>	✓			
#20		<input type="checkbox"/>	✓			
#29		<input type="checkbox"/>	✓			
#10		<input type="checkbox"/>	✓			
#18		<input type="checkbox"/>	✓			
#32		<input type="checkbox"/>	✓			
sample 10		<input type="checkbox"/>				
sample 11		<input type="checkbox"/>				
Ladder		<input type="checkbox"/>	✓			

Chip Lot #

Reagent Kit Lot #

Chip Comments :

Assay Class: High Sensitivity DNA Assay
Data Path: C:\...ents and Settings\Bioanalyzer\2012-04-17\2012-04-17_001.xad

Created: 4/17/2012 9:09:02 AM
Modified: 4/17/2012 9:51:04 AM

Electrophoresis Assay Details

General Analysis Settings

Number of Available Sample and Ladder Wells (Max.) : 12
Minimum Visible Range [s] : 32
Maximum Visible Range [s] : 138
Start Analysis Time Range [s] : 33
End Analysis Time Range [s] : 137.5
Ladder Concentration [pg/μl] : 1950
Uses Standard Area for Ladder Fragments
Lower Marker Concentration [pg/μl] : 125
Upper Marker Concentration [pg/μl] : 75
Used Upper Marker for Quantitation
Standard Curve Fit is Point to Point
Show Data Aligned to Lower and Upper Marker

Integrator Settings

Integration Start Time [s] : 33.05
Integration End Time [s] : 137
Slope Threshold : 0.8
Height Threshold [FU] : 5
Area Threshold : 0.1
Width Threshold [s] : 0.6
Baseline Plateau [s] : 0.5

Filter Settings

Filter Width [s] : 0.5
Polynomial Order : 4

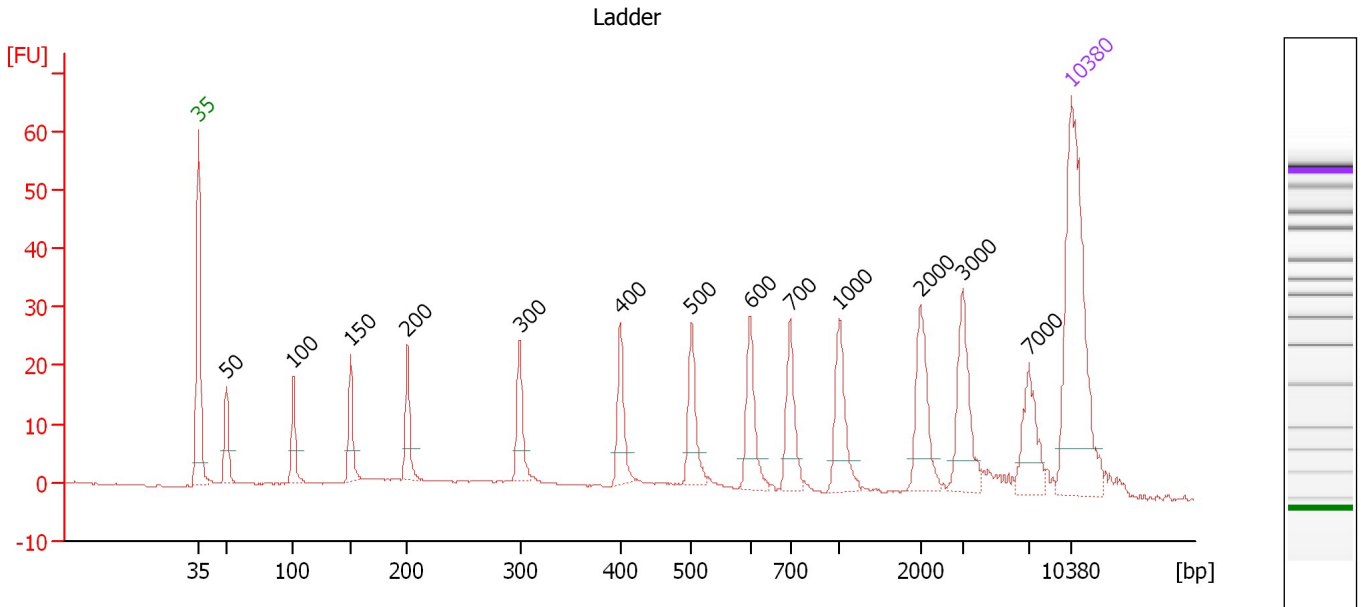
Ladder

Ladder Peak	Size	Area
1	35	160
2	50	210
3	100	208
4	150	221
5	200	242
6	300	270
7	400	305
8	500	306
9	600	336
10	700	321
11	1000	366
12	2000	413
13	3000	411
14	7000	400
15	10380	214

Assay Class: High Sensitivity DNA Assay
 Data Path: C:\...ents and Settings\Bioanalyzer\2012-04-17\2012-04-17_001.xad

Created: 4/17/2012 9:09:02 AM
 Modified: 4/17/2012 9:51:04 AM

Electropherogram Summary



Overall Results for Ladder

Noise: 0.1

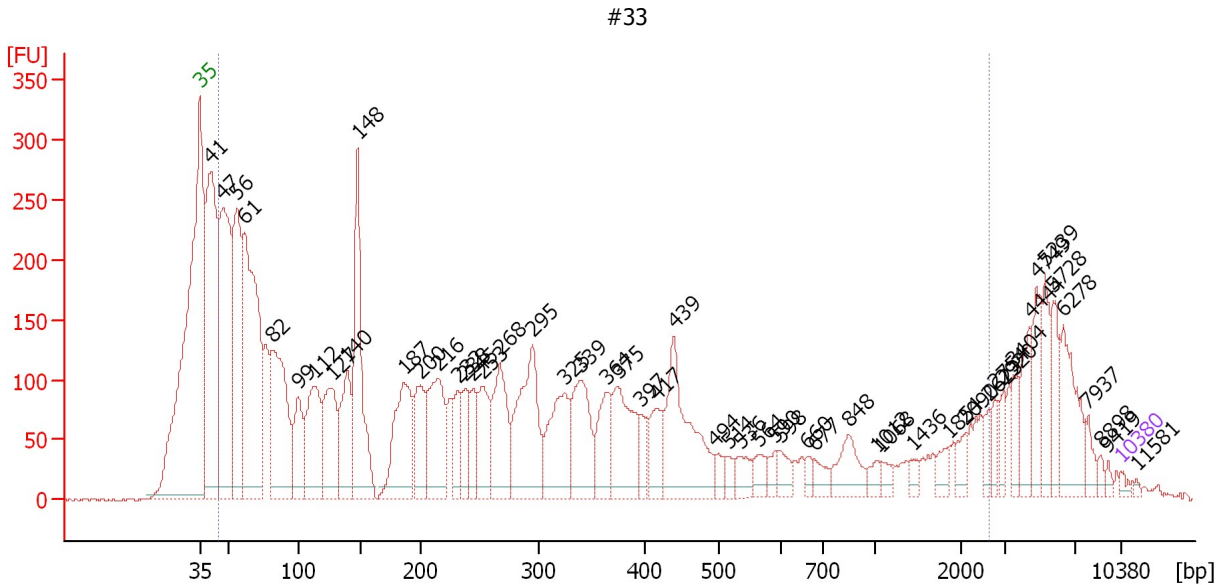
Peak table for Ladder

Peak	Size [bp]	Conc. [pg/μl]	Molarity [pmol/l]	Observations
1	35	125.00	5,411.3	Lower Marker
2	50	150.00	4,545.5	Ladder Peak
3	100	150.00	2,272.7	Ladder Peak
4	150	150.00	1,515.2	Ladder Peak
5	200	150.00	1,136.4	Ladder Peak
6	300	150.00	757.6	Ladder Peak
7	400	150.00	568.2	Ladder Peak
8	500	150.00	454.5	Ladder Peak
9	600	150.00	378.8	Ladder Peak
10	700	150.00	324.7	Ladder Peak
11	1,000	150.00	227.3	Ladder Peak
12	2,000	150.00	113.6	Ladder Peak
13	3,000	150.00	75.8	Ladder Peak
14	7,000	150.00	32.5	Ladder Peak
15	10,380	75.00	10.9	Upper Marker

Assay Class: High Sensitivity DNA Assay
 Data Path: C:\...ents and Settings\Bioanalyzer\2012-04-17\2012-04-17_001.xad

Created: 4/17/2012 9:09:02 AM
 Modified: 4/17/2012 9:51:04 AM

Electropherogram Summary Continued ...



Setpoint Deviations for sample 1 : #33

Height Threshold [FU] : 10

Overall Results for sample 1 : #33

Number of peaks found: 53 Corr. Area 1: 7,732.3
 Noise: 1.8

Peak table for sample 1 : #33

Peak	Size [bp]	Conc. [pg/μl]	Molarity [pmol/l]	Observations
1	35	125.00	5,411.3	Lower Marker
2	41	8,756.38	325,639.9	
3	47	7,561.32	243,595.9	
4	56	5,123.10	139,256.4	
5	61	8,895.82	220,781.8	
6	82	5,153.18	95,774.2	
7	99	1,799.22	27,441.1	
8	112	3,077.46	41,644.8	
9	127	2,633.59	31,447.6	
10	140	2,222.79	24,122.8	
11	148	4,464.84	45,723.9	
12	187	3,087.18	25,038.8	
13	200	1,647.67	12,468.2	
14	216	2,657.39	18,683.7	
15	232	942.97	6,155.1	
16	238	1,019.59	6,491.9	
17	245	938.28	5,799.1	
18	253	1,513.06	9,069.0	
19	268	2,208.65	12,504.9	
20	295	3,278.10	16,835.8	
21	325	2,175.30	10,136.2	
22	339	2,077.76	9,278.9	

Assay Class: High Sensitivity DNA Assay
 Data Path: C:\...ents and Settings\Bioanalyzer\2012-04-17\2012-04-17_001.xad


Created: 4/17/2012 9:09:02 AM
 Modified: 4/17/2012 9:51:04 AM

Electropherogram Summary Continued ...

... Peak table for sample 1 : #33

Peak	Size [bp]	Conc. [pg/µl]	Molarity [pmol/l]	Observations
23	364	1,271.14	5,284.0	
24	375	2,088.10	8,435.1	
25	397	423.12	1,613.8	
26	417	912.79	3,319.2	
27	439	3,003.75	10,359.8	
28	494	294.53	902.5	
29	514	271.09	799.2	
30	536	435.14	1,231.2	
31	564	366.74	985.3	
32	590	262.15	673.5	
33	598	353.88	896.0	
34	660	198.39	455.7	
35	677	317.78	710.9	
36	848	816.11	1,457.4	
37	1,012	225.37	337.3	
38	1,068	194.38	275.7	
39	1,436	172.06	181.5	
40	1,854	259.61	212.1	
41	2,090	269.61	195.4	
42	2,623	253.08	146.2	
43	2,754	260.44	143.3	
44	2,920	277.66	144.1	
45	3,404	397.22	176.8	
46	4,444	713.70	243.3	
47	4,749	767.50	244.8	
48	5,239	668.18	193.3	
49	5,728	676.50	178.9	
50	6,278	1,199.82	289.6	
51	7,937	266.70	50.9	
52	8,898	98.04	16.7	
53	9,419	76.71	12.3	
54	10,380	75.00	10.9	Upper Marker
55	11,581	0.00	0.0	

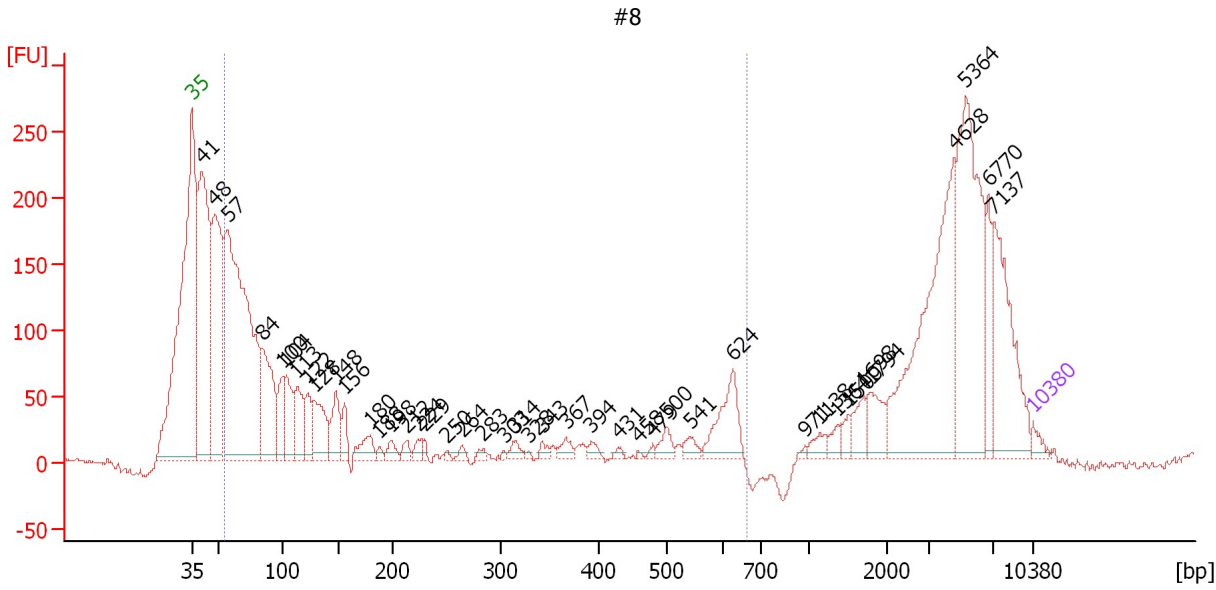
Region table for sample 1 : #33

From [bp]	Molarity [pmol/l]	Average Size [bp]	Conc. [pg/µl]	To [bp]	Corr. Area	% of Total	Size distribution in CV [%]	Color
44	1,050,751.9	382	79,070.39	2,607	7,732.3	83	100.0	

Assay Class: High Sensitivity DNA Assay
 Data Path: C:\...ents and Settings\Bioanalyzer\2012-04-17\2012-04-17_001.xad

Created: 4/17/2012 9:09:02 AM
 Modified: 4/17/2012 9:51:04 AM

Electropherogram Summary Continued ...



Overall Results for sample 2 : #8

Number of peaks found: 42 Corr. Area 1: 2,154.0
 Noise: 1.4

Peak table for sample 2 : #8

Peak	Size [bp]	Conc. [pg/μl]	Molarity [pmol/l]	Observations
1	35	125.00	5,411.3	Lower Marker
2	41	4,583.87	170,705.1	
3	48	3,339.02	105,033.1	
4	57	7,049.31	187,375.0	
5	84	1,578.38	28,620.1	
6	100	537.31	8,162.1	
7	104	779.84	11,411.3	
8	113	699.34	9,364.6	
9	122	446.21	5,529.2	
10	128	813.70	9,629.0	
11	148	538.90	5,527.1	
12	156	274.84	2,669.3	
13	180	291.66	2,455.3	
14	188	63.48	512.1	
15	198	140.57	1,075.2	
16	212	113.60	810.6	
17	224	112.18	760.0	
18	229	64.40	426.0	
19	250	31.50	190.8	
20	264	65.09	373.6	
21	283	58.79	314.6	
22	303	26.92	134.8	
23	314	121.77	587.3	
24	328	26.39	121.9	
25	343	77.39	342.0	
26	367	138.81	572.8	

Assay Class: High Sensitivity DNA Assay
 Data Path: C:\...ents and Settings\Bioanalyzer\2012-04-17\2012-04-17_001.xad


Created: 4/17/2012 9:09:02 AM
 Modified: 4/17/2012 9:51:04 AM

Electropherogram Summary Continued ...

... Peak table for sample 2 : #8

Peak	Size [bp]	Conc. [pg/µl]	Molarity [pmol/l]	Observations
27	394	89.21	343.4	
28	431	45.97	161.8	
29	458	19.27	63.7	
30	479	40.38	127.6	
31	500	163.61	495.5	
32	541	126.71	355.0	
33	624	637.10	1,547.3	
34	971	27.04	42.2	
35	1,138	123.26	164.0	
36	1,364	95.71	106.3	
37	1,500	101.79	102.8	
38	1,698	215.14	192.0	
39	1,794	305.50	258.1	
40	4,628	2,473.51	809.8	
41	5,364	2,116.23	597.7	
42	6,770	398.14	89.1	
43	7,137	1,241.30	263.5	
44	10,380	75.00	10.9	Upper Marker

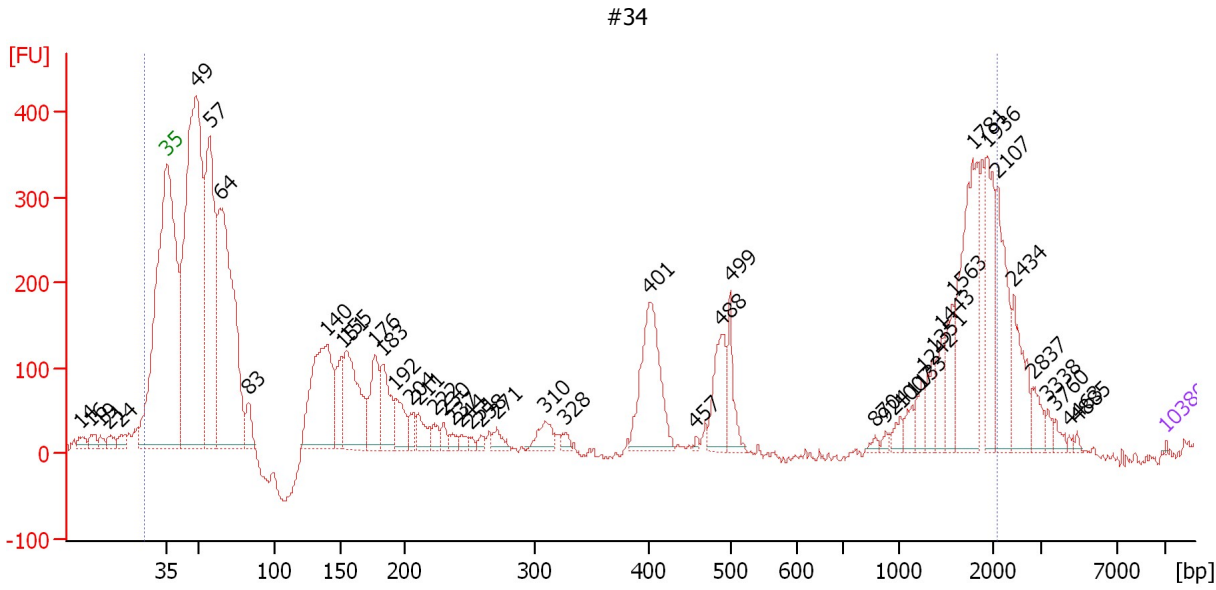
Region table for sample 2 : #8

From [bp]	Molarity [pmol/l]	Average Size [bp]	Conc. [pg/µl]	To [bp]	Corr. Area	% of Total	Size distribution in CV [%]	Color
55	237,181.6	196	14,939.98	662	2,154.0	42	93.4	

Assay Class: High Sensitivity DNA Assay
 Data Path: C:\...ents and Settings\Bioanalyzer\2012-04-17\2012-04-17_001.xad

Created: 4/17/2012 9:09:02 AM
 Modified: 4/17/2012 9:51:04 AM

Electropherogram Summary Continued ...



Overall Results for sample 3 : #34

Number of peaks found: 47 Corr. Area 1: 7,388.8
 Noise: 4.4

Peak table for sample 3 : #34


Peak	Size [bp]	Conc. [pg/μl]	Molarity [pmol/l]	Observations
1	14	0.00	0.0	
2	16	0.00	0.0	
3	19	0.00	0.0	
4	21	0.00	0.0	
5	24	0.00	0.0	
6	35	125.00	5,411.3	Lower Marker
7	49	99,594.80	3,074,540.5	
8	57	44,467.10	1,172,907.0	
9	64	62,425.18	1,476,324.1	
10	83	4,052.30	74,067.6	
11	140	27,805.05	301,074.5	
12	151	6,609.08	66,206.2	
13	155	18,346.23	179,870.9	
14	176	8,891.74	76,403.1	
15	183	8,807.13	72,954.3	
16	192	5,297.82	41,816.7	
17	204	2,192.10	16,256.4	
18	211	3,212.02	23,118.7	
19	222	1,791.59	12,200.8	
20	230	1,399.08	9,219.6	
21	237	1,022.62	6,550.5	
22	244	991.85	6,170.2	
23	251	576.14	3,483.7	
24	258	772.14	4,527.0	
25	271	1,731.40	9,671.8	
26	310	3,220.20	15,743.6	

Assay Class: High Sensitivity DNA Assay
 Data Path: C:\...ents and Settings\Bioanalyzer\2012-04-17\2012-04-17_001.xad


Created: 4/17/2012 9:09:02 AM
 Modified: 4/17/2012 9:51:04 AM

Electropherogram Summary Continued ...

... Peak table for sample 3 : #34

Peak	Size [bp]	Conc. [pg/μl]	Molarity [pmol/l]	Observations
27	328	936.84	4,333.8	
28	401	16,438.13	62,094.3	
29	457	383.05	1,269.8	
30	488	7,741.56	24,022.8	
31	499	4,614.13	14,001.0	
32	870	510.04	888.5	
33	924	468.25	768.0	
34	1,007	1,160.74	1,746.8	
35	1,133	1,456.38	1,947.6	
36	1,242	2,004.84	2,445.9	
37	1,351	2,305.13	2,585.4	
38	1,443	3,118.08	3,274.8	
39	1,563	3,931.65	3,811.1	
40	1,781	16,116.90	13,711.2	
41	1,936	8,452.77	6,615.9	
42	2,107	8,726.77	6,275.8	
43	2,434	5,545.27	3,452.2	
44	2,837	1,930.87	1,031.2	
45	3,338	769.85	349.4	
46	3,760	806.45	325.0	
47	4,463	265.13	90.0	
48	4,885	263.91	81.9	
49	 10,380	75.00	10.9	Upper Marker

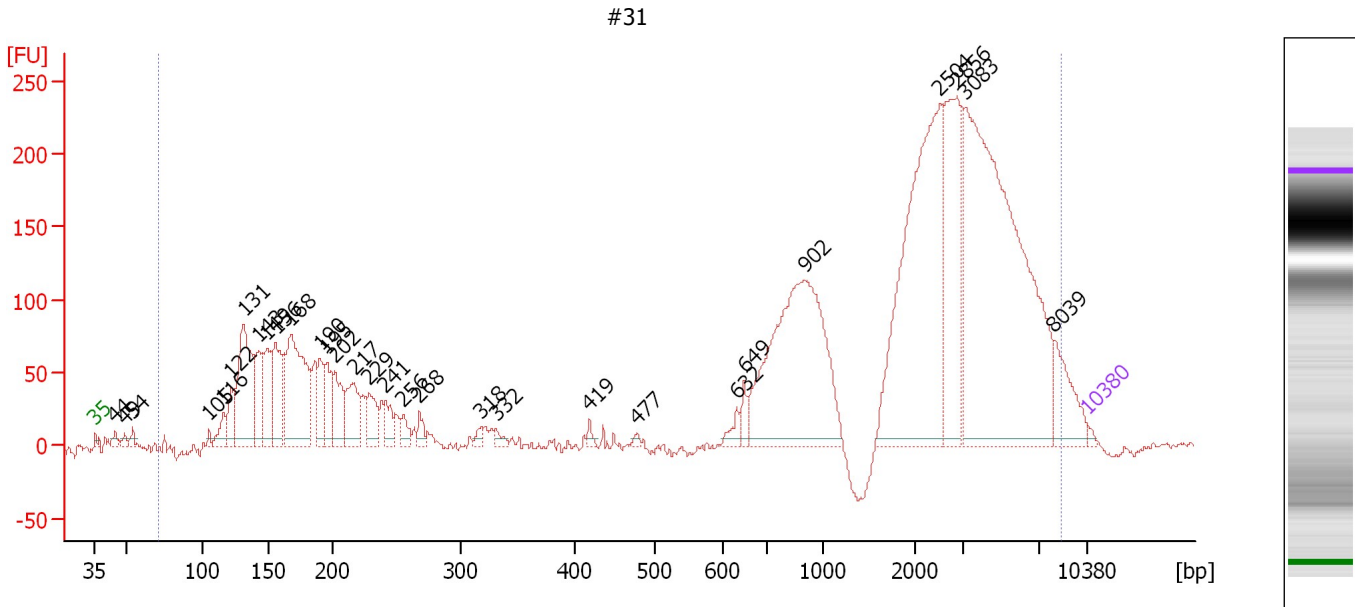
Region table for sample 3 : #34

From [bp]	Molarity [pmol/l]	Average Size [bp]	Conc. [pg/μl]	To [bp]	Corr. Area	% of Total	Size distribution in CV [%]	Color
25	6,891,287.0	590	363,302.75	2,085	7,388.8	91	100.0	

Assay Class: High Sensitivity DNA Assay
 Data Path: C:\...ents and Settings\Bioanalyzer\2012-04-17\2012-04-17_001.xad

Created: 4/17/2012 9:09:02 AM
 Modified: 4/17/2012 9:51:04 AM

Electropherogram Summary Continued ...



Overall Results for sample 4 : #31

Number of peaks found: 30 Corr. Area 1: 5,257.8
 Noise: 3.2

Peak table for sample 4 : #31

Peak	Size [bp]	Conc. [pg/μl]	Molarity [pmol/l]	Observations
1	35	125.00	5,411.3	Lower Marker
2	44	303.20	10,349.5	
3	49	230.15	7,123.1	
4	54	262.25	7,381.6	
5	105	146.18	2,105.2	
6	116	745.47	9,754.5	
7	122	1,042.61	12,958.9	
8	131	4,762.35	54,969.1	
9	143	2,123.45	22,486.7	
10	149	1,993.53	20,246.4	
11	156	2,462.17	23,943.0	
12	168	5,778.86	52,167.0	
13	190	1,302.78	10,375.4	
14	195	1,278.52	9,922.5	
15	202	1,514.12	11,364.0	
16	217	1,760.43	12,298.4	
17	229	1,064.34	7,042.9	
18	241	697.18	4,374.4	
19	256	442.84	2,624.5	
20	268	342.10	1,932.9	
21	318	186.82	891.2	
22	332	224.23	1,024.4	
23	419	148.37	536.5	
24	477	92.60	293.9	
25	632	319.78	766.3	
26	649	356.39	832.4	

Assay Class: High Sensitivity DNA Assay
 Data Path: C:\...ents and Settings\Bioanalyzer\2012-04-17\2012-04-17_001.xad


Created: 4/17/2012 9:09:02 AM
 Modified: 4/17/2012 9:51:04 AM

Electropherogram Summary Continued ...

... Peak table for sample 4 : #31

Peak	Size [bp]	Conc. [pg/μl]	Molarity [pmol/l]	Observations
27	902	8,234.56	13,839.8	
28	2,504	8,437.52	5,104.9	
29	2,856	3,636.39	1,929.1	
30	3,083	12,102.17	5,948.2	
31	8,039	1,183.59	223.1	
32	10,380	75.00	10.9	Upper Marker

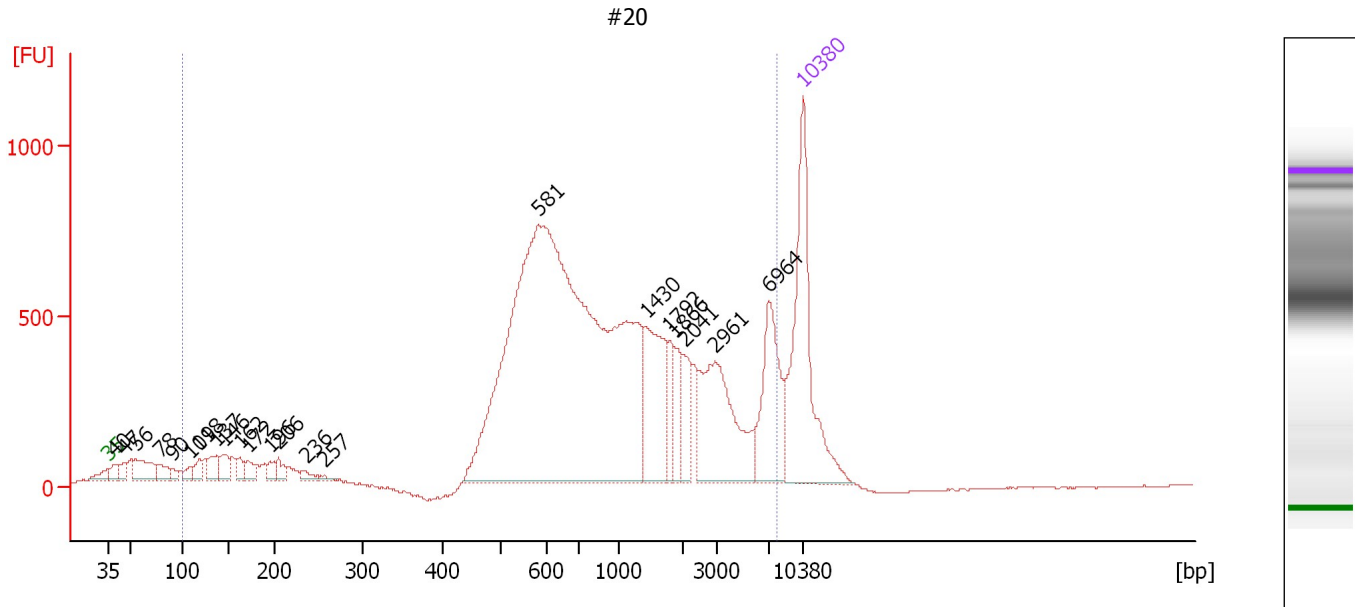
Region table for sample 4 : #31

From [bp]	Molarity [pmol/l]	Average Size [bp]	Conc. [pg/μl]	To [bp]	Corr. Area	% of Total	Size distribution in CV [%]	Color
70	371,151.5	2,379	73,217.41	8,539	5,257.8	95	87.8	

Assay Class: High Sensitivity DNA Assay
 Data Path: C:\...ents and Settings\Bioanalyzer\2012-04-17\2012-04-17_001.xad

Created: 4/17/2012 9:09:02 AM
 Modified: 4/17/2012 9:51:04 AM

Electropherogram Summary Continued ...



Overall Results for sample 5 : #20

Number of peaks found: 22 Corr. Area 1: 16,217.1
 Noise: 2.3


Peak table for sample 5 : #20

Peak	Size [bp]	Conc. [pg/μl]	Molarity [pmol/l]	Observations
1	35	125.00	5,411.3	Lower Marker
2	40	9.00	340.5	
3	47	7.09	229.0	
4	56	26.07	709.8	
5	78	10.67	207.0	
6	90	4.37	74.0	
7	109	5.93	82.2	
8	118	8.72	111.9	
9	137	14.22	157.2	
10	146	12.13	125.7	
11	162	7.45	69.6	
12	172	8.70	76.8	
13	196	6.05	46.7	
14	206	6.70	49.4	
15	236	4.80	30.8	
16	257	2.34	13.8	
17	581	538.10	1,403.2	
18	1,430	47.92	50.8	
19	1,792	12.75	10.8	
20	1,866	12.93	10.5	
21	2,041	16.11	12.0	
22	2,961	61.39	31.4	
23	6,964	44.75	9.7	
24	10,380	75.00	10.9	Upper Marker

Assay Class: High Sensitivity DNA Assay
Data Path: C:\...ents and Settings\Bioanalyzer\2012-04-17\2012-04-17_001.xad

Created: 4/17/2012 9:09:02 AM
Modified: 4/17/2012 9:51:04 AM

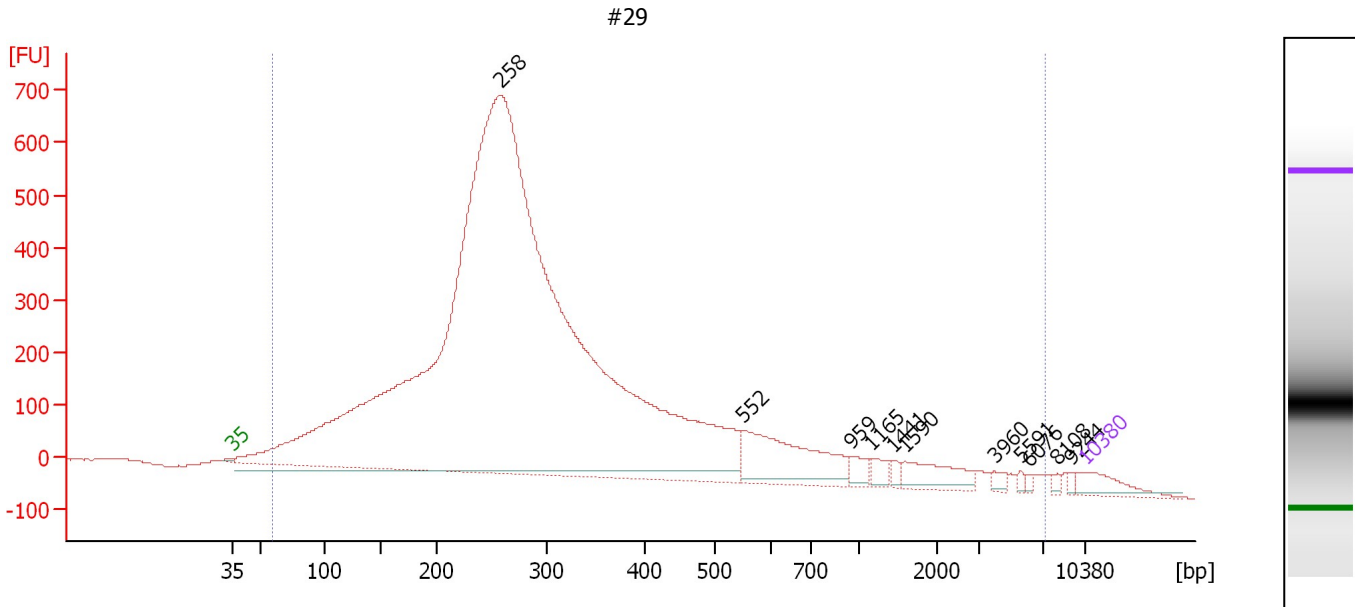
Electropherogram Summary Continued ...**... Region table for sample 5 : #20**

From [bp]	Molarity [pmol/l]	Average Size [bp]	Conc. [pg/μl]	To [bp]	Corr. Area	% of Total	Size distribution in CV [%]	Co lor
100	2,329.9	1,555	818.51	7,836	16,217.1	94	100.0	

Assay Class: High Sensitivity DNA Assay
 Data Path: C:\...ents and Settings\Bioanalyzer\2012-04-17\2012-04-17_001.xad

Created: 4/17/2012 9:09:02 AM
 Modified: 4/17/2012 9:51:04 AM

Electropherogram Summary Continued ...



Overall Results for sample 6 : #29

Number of peaks found: 11 Corr. Area 1: 14,828.4
 Noise: 0.9

Peak table for sample 6 : #29

Peak	Size [bp]	Conc. [pg/μl]	Molarity [pmol/l]	Observations
1	35	125.00	5,411.3	Lower Marker
2	258	9,011.70	52,851.3	
3	552	409.21	1,123.8	
4	959	45.01	71.1	
5	1,165	39.44	51.3	
6	1,441	21.28	22.4	
7	1,590	120.17	114.5	
8	3,960	18.13	6.9	
9	5,591	11.08	3.0	
10	6,076	8.98	2.2	
11	8,108	11.36	2.1	
12	9,244	9.15	1.5	
13	10,380	75.00	10.9	Upper Marker

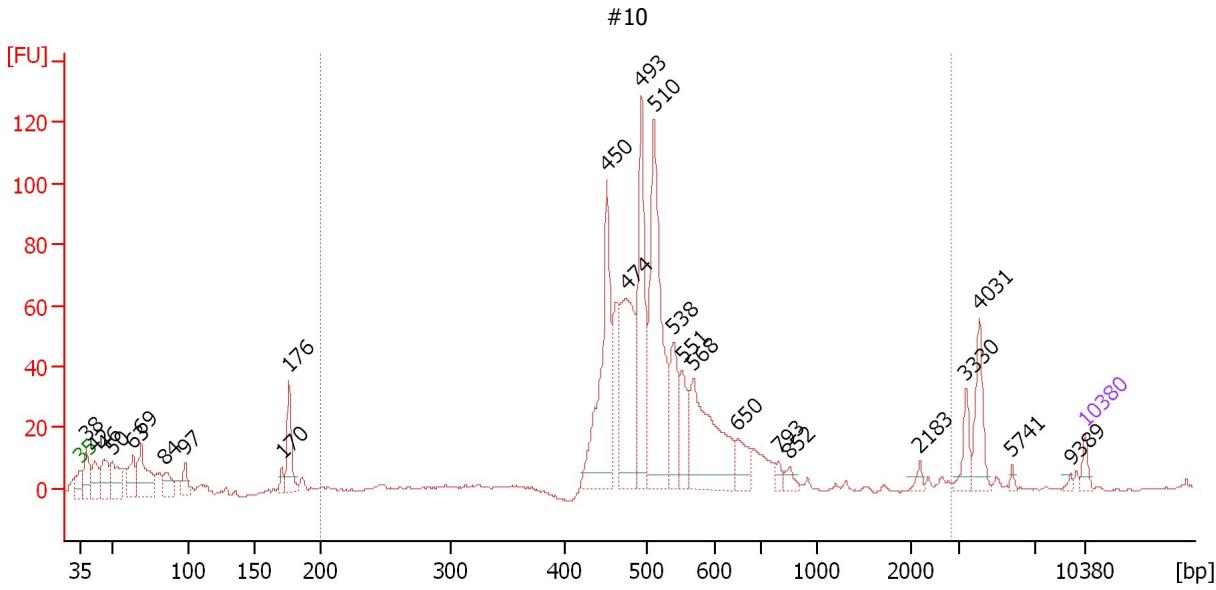
Region table for sample 6 : #29

From [bp]	Molarity [pmol/l]	Average Size [bp]	Conc. [pg/μl]	To [bp]	Corr. Area	% of Total	Size distribution in CV [%]	Color
59	63,448.2	466	9,807.23	7,082	14,828.4	98	100.0	Blue

Assay Class: High Sensitivity DNA Assay
 Data Path: C:\...ents and Settings\Bioanalyzer\2012-04-17\2012-04-17_001.xad

Created: 4/17/2012 9:09:02 AM
 Modified: 4/17/2012 9:51:04 AM

Electropherogram Summary Continued ...



Overall Results for sample 7 : #10

Number of peaks found: 25 Corr. Area 1: 761.6
 Noise: 0.3

Peak table for sample 7 : #10

Peak	Size [bp]	Conc. [pg/μl]	Molarity [pmol/l]	Observations
1	35	125.00	5,411.3	Lower Marker
2	38	552.64	22,176.7	
3	42	462.23	16,767.9	
4	46	550.59	18,026.1	
5	50	551.47	16,782.3	
6	63	452.66	10,841.7	
7	69	762.83	16,794.2	
8	84	295.41	5,299.4	
9	97	225.34	3,508.3	
10	170	94.90	843.4	
11	176	531.01	4,576.1	
12	450	1,548.93	5,210.1	
13	474	1,330.53	4,249.1	
14	493	1,292.31	3,974.9	
15	510	1,979.02	5,880.1	
16	538	558.15	1,570.8	
17	551	364.91	1,003.4	
18	568	1,258.47	3,354.7	
19	650	263.45	614.3	
20	793	58.34	111.5	
21	852	88.66	157.7	
22	2,183	52.04	36.1	
23	3,330	179.22	81.5	
24	4,031	353.01	132.7	
25	5,741	27.00	7.1	
26	9,389	21.07	3.4	


Assay Class: High Sensitivity DNA Assay
Data Path: C:\...ents and Settings\Bioanalyzer\2012-04-17\2012-04-17_001.xad

Created: 4/17/2012 9:09:02 AM
Modified: 4/17/2012 9:51:04 AM

Electropherogram Summary Continued ...**... Peak table for sample 7 : #10**

Peak	Size [bp]	Conc. [pg/ μ l]	Molarity [pmol/l]	Observations
27	10,380	75.00	10.9	Upper Marker

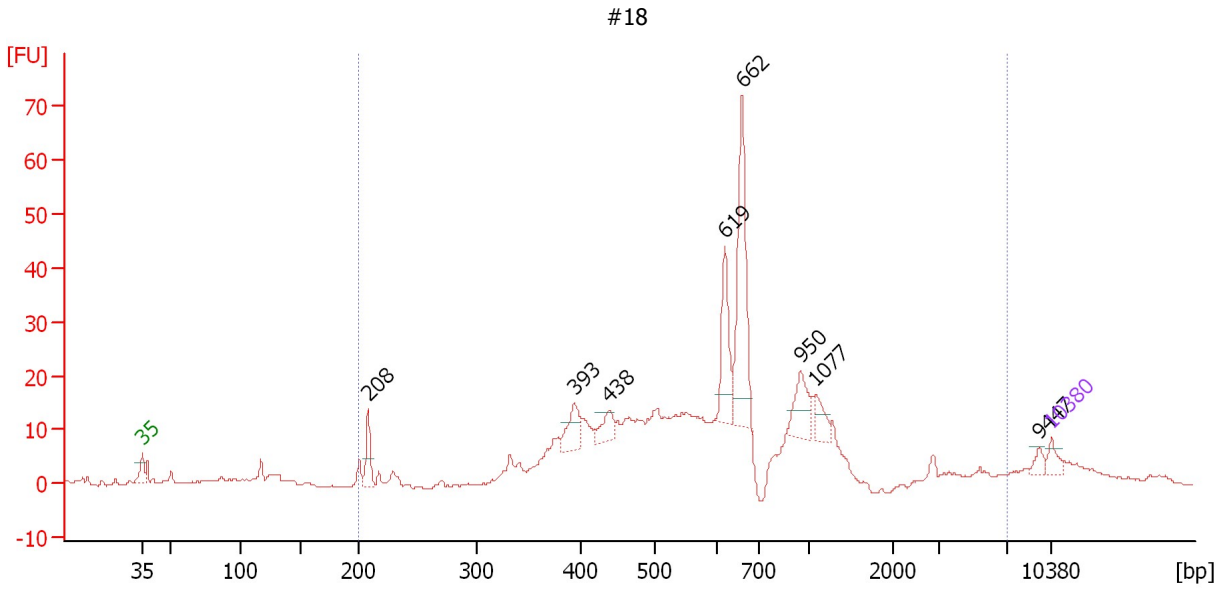
Region table for sample 7 : #10

From [bp]	Molarity [pmol/l]	Average Size [bp]	Conc. [pg/ μ l]	To [bp]	Corr. Area	% of Total	Size distribution in CV [%]	Color
200	26,430.0	530	8,916.77	2,807	761.6	81	28.5	

Assay Class: High Sensitivity DNA Assay
 Data Path: C:\...ents and Settings\Bioanalyzer\2012-04-17\2012-04-17_001.xad

Created: 4/17/2012 9:09:02 AM
 Modified: 4/17/2012 9:51:04 AM

Electropherogram Summary Continued ...



Overall Results for sample 8 : #18

Number of peaks found: 8 Corr. Area 1: 472.0
 Noise: 0.2

Peak table for sample 8 : #18

Peak	Size [bp]	Conc. [pg/μl]	Molarity [pmol/l]	Observations
1	35	125.00	5,411.3	Lower Marker
2	208	269.46	1,966.4	
3	393	273.45	1,053.0	
4	438	185.57	641.8	
5	619	486.73	1,190.9	
6	662	1,056.43	2,419.7	
7	950	296.29	472.4	
8	1,077	147.84	208.1	
9	9,447	56.26	9.0	
10	10,380	75.00	10.9	Upper Marker

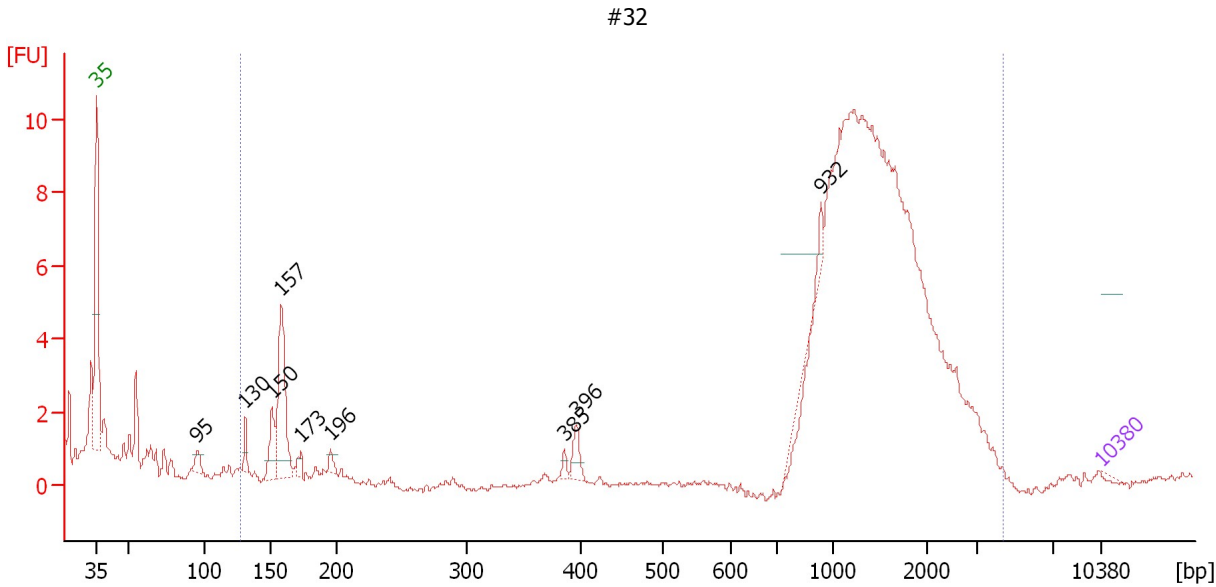
Region table for sample 8 : #18

From [bp]	Molarity [pmol/l]	Average Size [bp]	Conc. [pg/μl]	To [bp]	Corr. Area	% of Total	Size distribution in CV [%]	Color
200	25,624.7	777	8,894.39	7,057	472.0	91	100.0	Blue

Assay Class: High Sensitivity DNA Assay
 Data Path: C:\...ents and Settings\Bioanalyzer\2012-04-17\2012-04-17_001.xad

Created: 4/17/2012 9:09:02 AM
 Modified: 4/17/2012 9:51:04 AM

Electropherogram Summary Continued ...



Setpoint Deviations for sample 9 : #32

Height Threshold [FU] : 0.5

Overall Results for sample 9 : #32

Number of peaks found: 9
 Noise: 0.1
 Corr. Area 1: 103.9

Peak table for sample 9 : #32

Peak	Size [bp]	Conc. [pg/μl]	Molarity [pmol/l]	Observations
1	35	125.00	5,411.3	Lower Marker
2	95	0.00	0.0	
3	130	0.00	0.0	
4	150	0.00	0.0	
5	157	0.00	0.0	
6	173	0.00	0.0	
7	196	0.00	0.0	
8	385	0.00	0.0	
9	396	0.00	0.0	
10	932	0.00	0.0	
11	10,380	75.00	10.9	Upper Marker

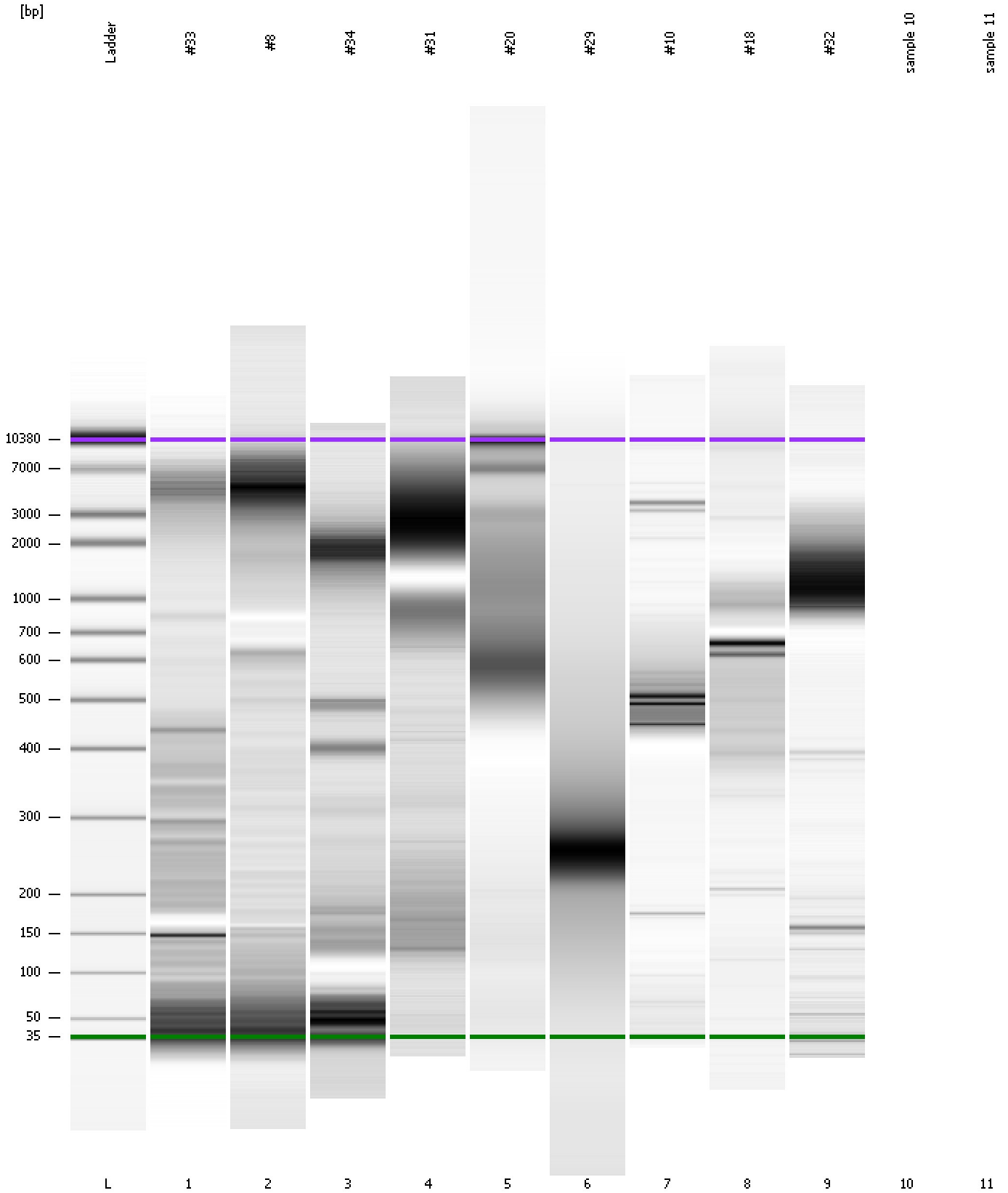
Region table for sample 9 : #32

From [bp]	Molarity [pmol/l]	Average Size [bp]	Conc. [pg/μl]	To [bp]	Corr. Area	% of Total	Size distribution in CV [%]	Color
126	0.0	1,469	0.00	4,425	103.9	95	40.4	Blue

Assay Class: High Sensitivity DNA Assay
Data Path: C:\...ents and Settings\Bioanalyzer\2012-04-17\2012-04-17_001.xad

Created: 4/17/2012 9:09:02 AM
Modified: 4/17/2012 9:51:04 AM

Gel Image



Assay Class: High Sensitivity DNA Assay
Data Path: C:\...ents and Settings\Bioanalyzer\2012-04-17\2012-04-17_001.xad

Created: 4/17/2012 9:09:02 AM
Modified: 4/17/2012 9:51:04 AM

Invalid Samples

Sample 10 has not been run, no results available.

Sample 11 has not been run, no results available.

Assay Class: High Sensitivity DNA Assay
 Data Path: C:\...ents and Settings\Bioanalyzer\2012-04-17\2012-04-17_001.xad

Created: 4/17/2012 9:09:02 AM
 Modified: 4/17/2012 9:51:04 AM

Run Logbook

Description	Number	Source	Category	Sub Category	Time	Time Zone	User	Host
Run ended on port 1 (Number of wells acquired: 10)		Instrument	Run		4/17/2012 9:44:37 AM	(GMT --07:00) Pacific Standard Time	UC Davis	D8XSMGH1
Run started on port 1 (File: C:\Documents and Settings\Bioanalyzer\2012-04-17\2012-04-17_001.xad)		Instrument	Run		4/17/2012 9:09:07 AM	(GMT --07:00) Pacific Standard Time	UC Davis	D8XSMGH1
Product Number : G2938B		Instrument	Run		4/17/2012 9:09:07 AM	(GMT --07:00) Pacific Standard Time	UC Davis	D8XSMGH1
Name :		Instrument	Run		4/17/2012 9:09:07 AM	(GMT --07:00) Pacific Standard Time	UC Davis	D8XSMGH1
Vendor : Agilent Technologies		Instrument	Run		4/17/2012 9:09:07 AM	(GMT --07:00) Pacific Standard Time	UC Davis	D8XSMGH1
Serial# : DE13701086		Instrument	Run		4/17/2012 9:09:07 AM	(GMT --07:00) Pacific Standard Time	UC Davis	D8XSMGH1
Firmware : C.01.069		Instrument	Run		4/17/2012 9:09:07 AM	(GMT --07:00) Pacific Standard Time	UC Davis	D8XSMGH1
Cartridge : Electrode		Instrument	Run		4/17/2012 9:09:07 AM	(GMT --07:00) Pacific Standard Time	UC Davis	D8XSMGH1