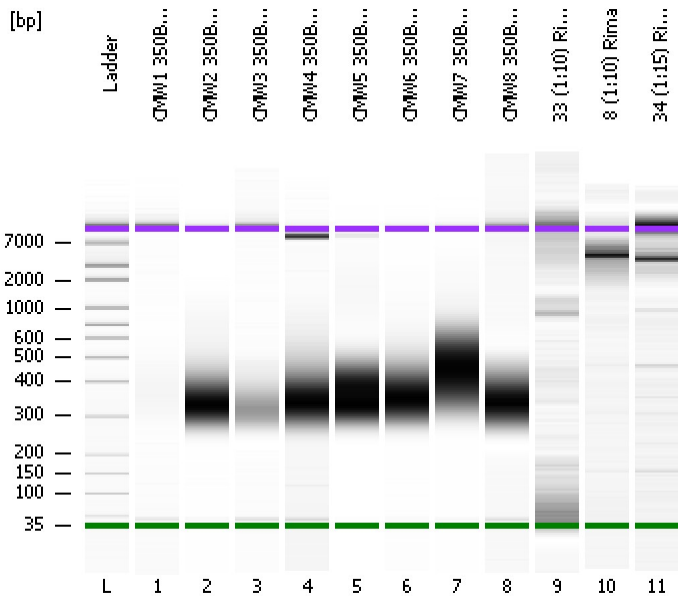


Assay Class: High Sensitivity DNA Assay  
Data Path: C:\...ents and Settings\Bioanalyzer\2012-04-17\2012-04-17\_002.xad

Created: 4/17/2012 10:13:12 AM  
Modified: 4/17/2012 11:02:53 AM

**Electrophoresis File Run Summary**



Instrument Information:

Instrument Name: DE13701086      Firmware: C.01.069  
Serial#: DE13701086      Type: G2938B

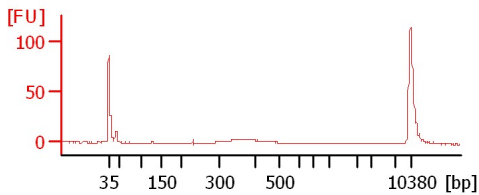
Assay Information:

Assay Origin Path: C:\Program Files\Agilent\2100 bioanalyzer\2100 expert\assays\dsDNA\High Sensitivity DNA.xsy  
Assay Class: High Sensitivity DNA Assay  
Version: 1.03  
Assay Comments: Copyright © 2003-2010 Agilent Technologies

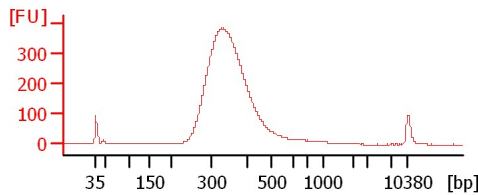
Chip Information:

Chip Lot #:  
Reagent Kit Lot #:  
Chip Comments:

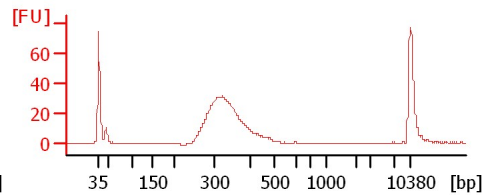
**CMW1 350BP Lib**



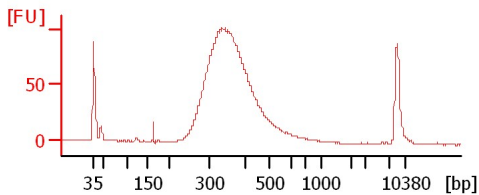
**CMW2 350BP Lib**



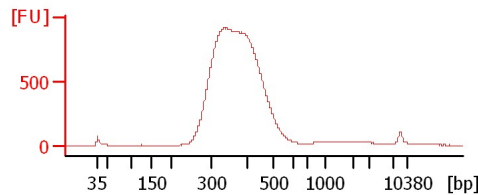
**CMW3 350BP Lib**



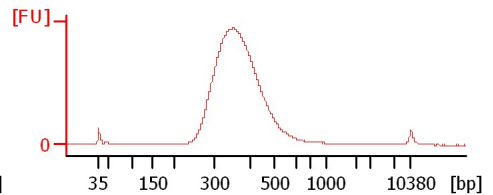
**CMW4 350BP Lib**



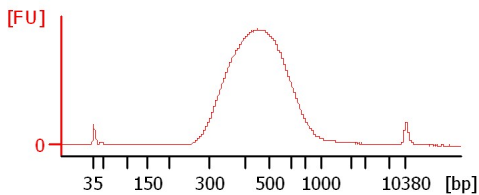
**CMW5 350BP Lib**



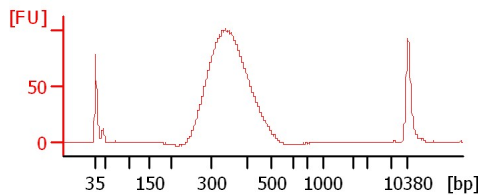
**CMW6 350BP Lib**



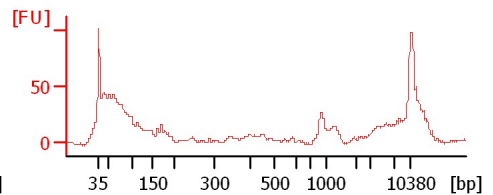
**CMW7 350BP Lib**



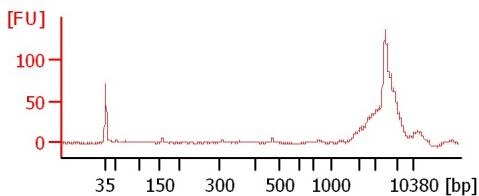
**CMW8 350BP Lib**



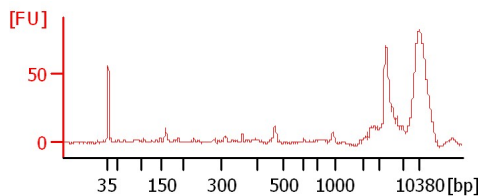
**33 (1:10) Rima**



**8 (1:10) Rima**



**34 (1:15) Rima**



Assay Class: High Sensitivity DNA Assay  
Data Path: C:\...ents and Settings\Bioanalyzer\2012-04-17\2012-04-17\_002.xad

Created: 4/17/2012 10:13:12 AM  
Modified: 4/17/2012 11:02:53 AM

**Electrophoresis File Run Summary (Chip Summary)**

Sample Name	Sample Comment	Rest. Digest	Status	Observation	Result Label	Result Color
CMW1 350BP Lib		<input type="checkbox"/>	✓			
CMW2 350BP Lib		<input type="checkbox"/>	✓			
CMW3 350BP Lib		<input type="checkbox"/>	✓			
CMW4 350BP Lib		<input type="checkbox"/>	✓			
CMW5 350BP Lib		<input type="checkbox"/>	✓			
CMW6 350BP Lib		<input type="checkbox"/>	✓			
CMW7 350BP Lib		<input type="checkbox"/>	✓			
CMW8 350BP Lib		<input type="checkbox"/>	✓			
33 (1:10) Rima		<input type="checkbox"/>	✓			
8 (1:10) Rima		<input type="checkbox"/>	✓			
34 (1:15) Rima		<input type="checkbox"/>	✓			
Ladder		<input type="checkbox"/>	✓			

**Chip Lot #**

**Reagent Kit Lot #**

**Chip Comments :**

Assay Class: High Sensitivity DNA Assay  
Data Path: C:\...ents and Settings\Bioanalyzer\2012-04-17\2012-04-17\_002.xad

Created: 4/17/2012 10:13:12 AM  
Modified: 4/17/2012 11:02:53 AM

**Electrophoresis Assay Details**

**General Analysis Settings**

Number of Available Sample and Ladder Wells (Max.) : 12  
Minimum Visible Range [s] : 32  
Maximum Visible Range [s] : 138  
Start Analysis Time Range [s] : 33  
End Analysis Time Range [s] : 137.5  
Ladder Concentration [pg/μl] : 1950  
Uses Standard Area for Ladder Fragments  
Lower Marker Concentration [pg/μl] : 125  
Upper Marker Concentration [pg/μl] : 75  
Used Upper Marker for Quantitation  
Standard Curve Fit is Point to Point  
Show Data Aligned to Lower and Upper Marker

**Integrator Settings**

Integration Start Time [s] : 33.05  
Integration End Time [s] : 137  
Slope Threshold : 0.8  
Height Threshold [FU] : 5  
Area Threshold : 0.1  
Width Threshold [s] : 0.6  
Baseline Plateau [s] : 0.5

**Filter Settings**

Filter Width [s] : 0.5  
Polynomial Order : 4

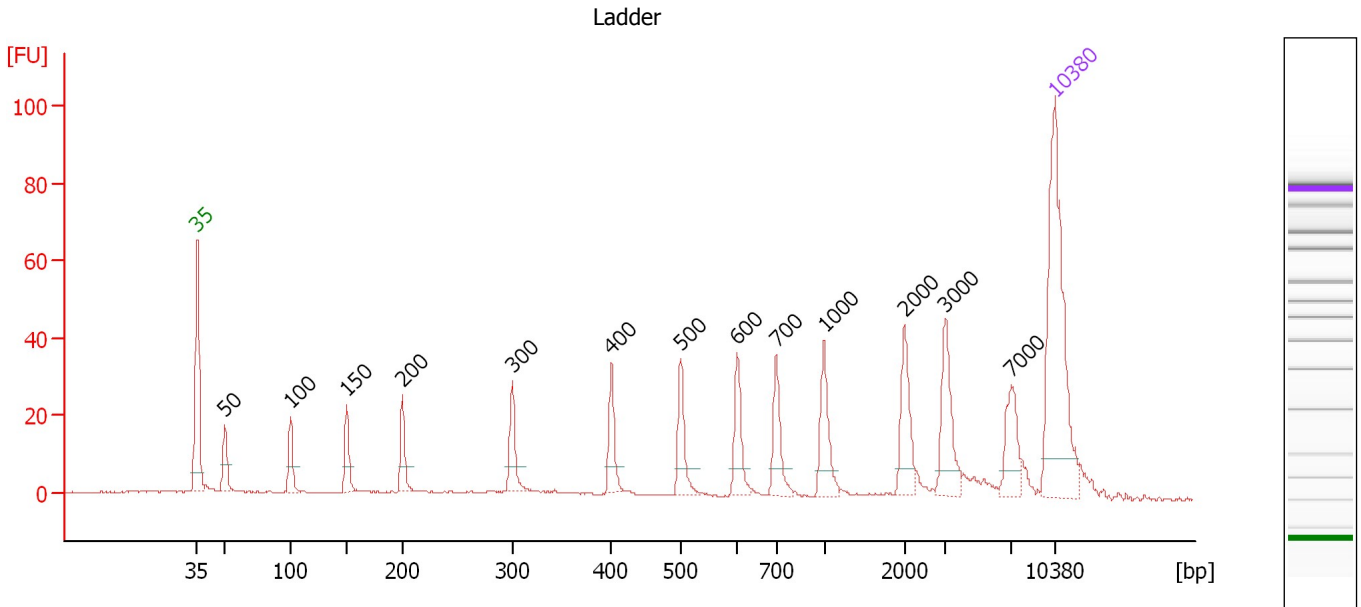
**Ladder**

Ladder Peak	Size	Area
1	35	160
2	50	210
3	100	208
4	150	221
5	200	242
6	300	270
7	400	305
8	500	306
9	600	336
10	700	321
11	1000	366
12	2000	413
13	3000	411
14	7000	400
15	10380	214

Assay Class: High Sensitivity DNA Assay  
 Data Path: C:\...ents and Settings\Bioanalyzer\2012-04-17\2012-04-17\_002.xad

Created: 4/17/2012 10:13:12 AM  
 Modified: 4/17/2012 11:02:53 AM

**Electropherogram Summary**



**Overall Results for Ladder**

Noise: 0.1

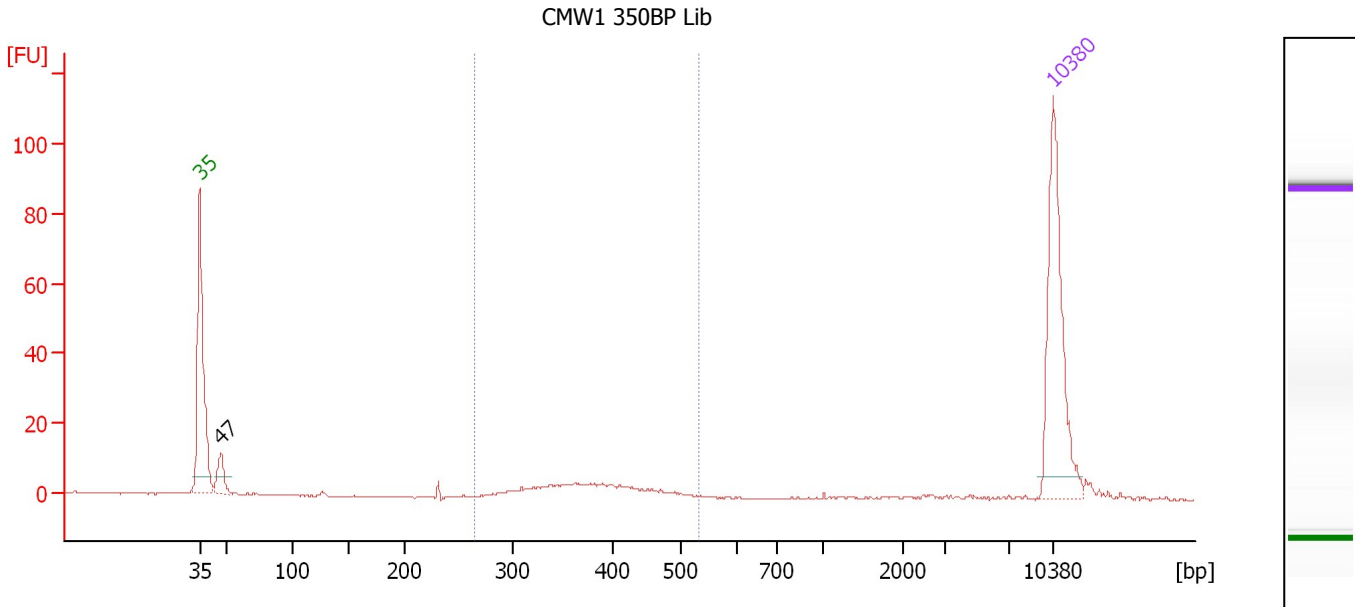
**Peak table for Ladder**

Peak	Size [bp]	Conc. [pg/μl]	Molarity [pmol/l]	Observations
1	35	125.00	5,411.3	Lower Marker
2	50	150.00	4,545.5	Ladder Peak
3	100	150.00	2,272.7	Ladder Peak
4	150	150.00	1,515.2	Ladder Peak
5	200	150.00	1,136.4	Ladder Peak
6	300	150.00	757.6	Ladder Peak
7	400	150.00	568.2	Ladder Peak
8	500	150.00	454.5	Ladder Peak
9	600	150.00	378.8	Ladder Peak
10	700	150.00	324.7	Ladder Peak
11	1,000	150.00	227.3	Ladder Peak
12	2,000	150.00	113.6	Ladder Peak
13	3,000	150.00	75.8	Ladder Peak
14	7,000	150.00	32.5	Ladder Peak
15	10,380	75.00	10.9	Upper Marker

Assay Class: High Sensitivity DNA Assay  
 Data Path: C:\...ents and Settings\Bioanalyzer\2012-04-17\2012-04-17\_002.xad

Created: 4/17/2012 10:13:12 AM  
 Modified: 4/17/2012 11:02:53 AM

**Electropherogram Summary Continued ...**



**Overall Results for sample 1 : CMW1 350BP Lib**

Number of peaks found: 1                      Corr. Area 1: 47.6  
 Noise: 0.2

**Peak table for sample 1 : CMW1 350BP Lib**

Peak	Size [bp]	Conc. [pg/μl]	Molarity [pmol/l]	Observations
1	35	125.00	5,411.3	Lower Marker
2	47	21.45	697.4	
3	10,380	75.00	10.9	Upper Marker

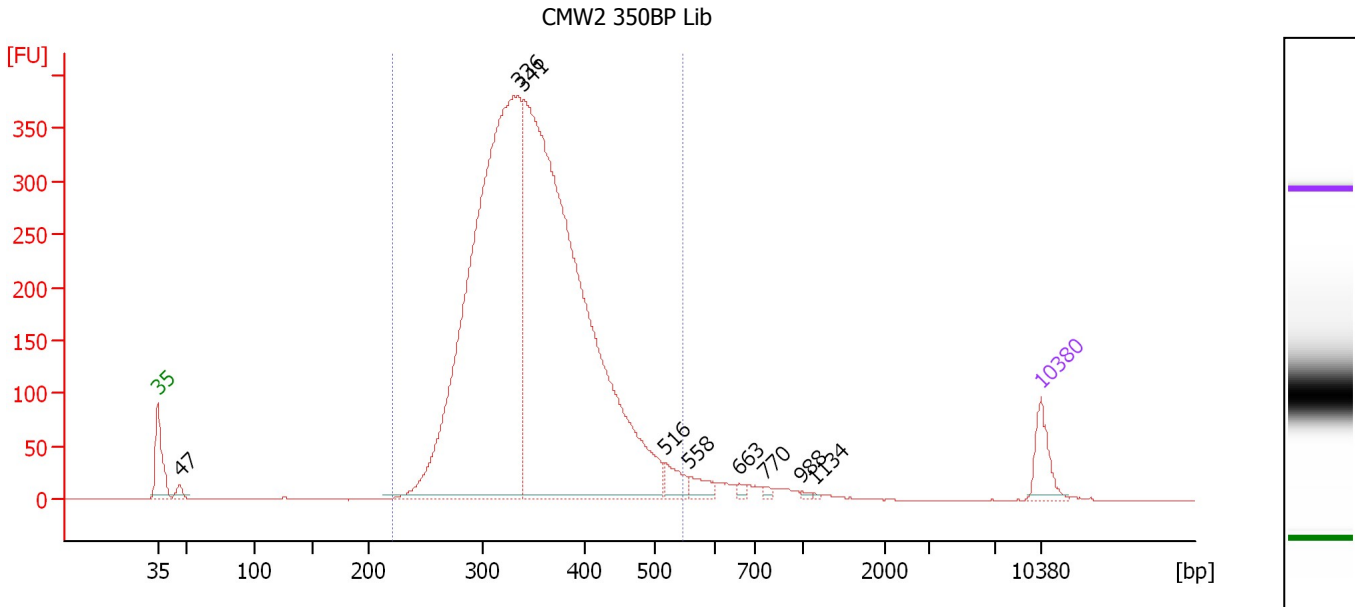
**Region table for sample 1 : CMW1 350BP Lib**

From [bp]	Molarity [pmol/l]	Average Size [bp]	Conc. [pg/μl]	To [bp]	Corr. Area	% of Total	Size distribution in CV [%]	Color
264	155.4	382	38.33	531	47.6	59	13.5	Blue

Assay Class: High Sensitivity DNA Assay  
 Data Path: C:\...ents and Settings\Bioanalyzer\2012-04-17\2012-04-17\_002.xad

Created: 4/17/2012 10:13:12 AM  
 Modified: 4/17/2012 11:02:53 AM

**Electropherogram Summary Continued ...**



**Overall Results for sample 2 : CMW2 350BP Lib**

Number of peaks found: 9                      Corr. Area 1: 5,612.0  
 Noise: 0.2

**Peak table for sample 2 : CMW2 350BP Lib**

Peak	Size [bp]	Conc. [pg/μl]	Molarity [pmol/l]	Observations
1	35	125.00	5,411.3	Lower Marker
2	47	31.80	1,036.3	
3	336	2,762.01	12,468.0	
4	341	3,156.77	14,043.0	
5	516	62.49	183.4	
6	558	43.74	118.9	
7	663	12.68	29.0	
8	770	10.12	19.9	
9	988	5.64	8.6	
10	1,134	2.64	3.5	
11	10,380	75.00	10.9	Upper Marker

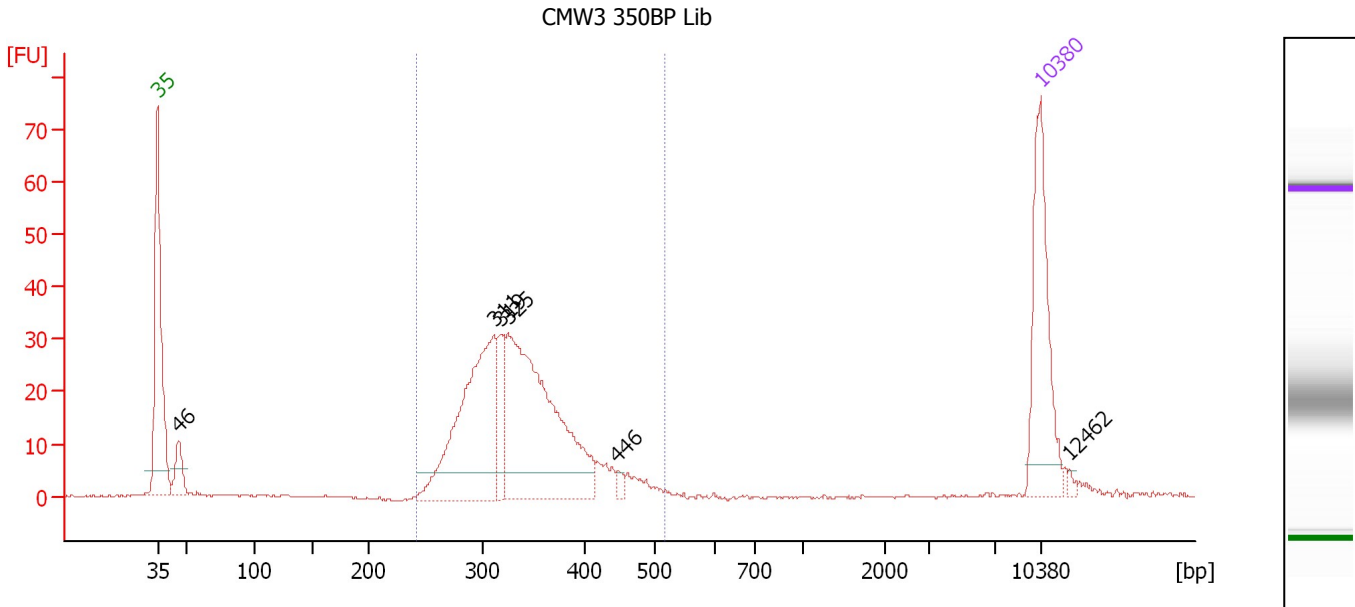
**Region table for sample 2 : CMW2 350BP Lib**

From [bp]	Molarity [pmol/l]	Average Size [bp]	Conc. [pg/μl]	To [bp]	Corr. Area	% of Total	Size distribution in CV [%]	Color
220	26,401.1	352	5,947.20	545	5,612.0	96	15.7	Blue

Assay Class: High Sensitivity DNA Assay  
 Data Path: C:\...ents and Settings\Bioanalyzer\2012-04-17\2012-04-17\_002.xad

Created: 4/17/2012 10:13:12 AM  
 Modified: 4/17/2012 11:02:53 AM

**Electropherogram Summary Continued ...**



**Overall Results for sample 3 : CMW3 350BP Lib**

Number of peaks found: 6                      Corr. Area 1: 401.9  
 Noise: 0.1

**Peak table for sample 3 : CMW3 350BP Lib**

Peak	Size [bp]	Conc. [pg/μl]	Molarity [pmol/l]	Observations
1	35	125.00	5,411.3	Lower Marker
2	46	27.77	914.6	
3	311	190.01	924.4	
4	319	36.52	173.7	
5	325	251.40	1,171.0	
6	446	4.63	15.7	
7	10,380	75.00	10.9	Upper Marker
8	12,462	0.00	0.0	

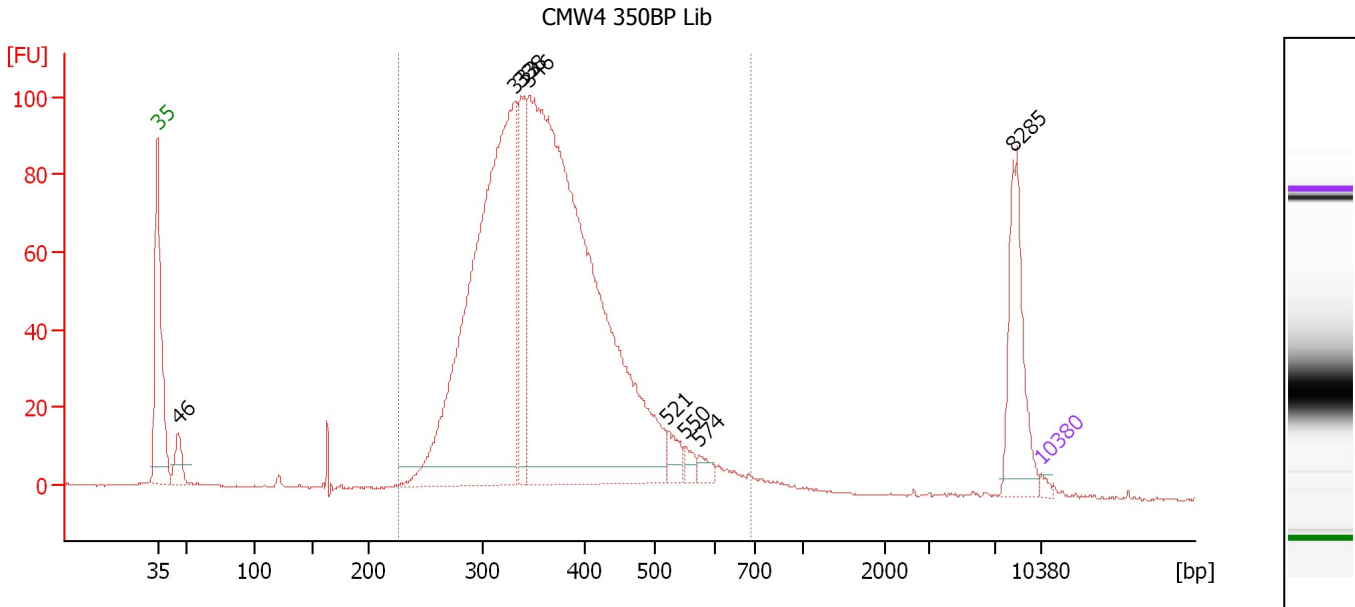
**Region table for sample 3 : CMW3 350BP Lib**

From [bp]	Molarity [pmol/l]	Average Size [bp]	Conc. [pg/μl]	To [bp]	Corr. Area	% of Total	Size distribution in CV [%]	Color
242	2,251.4	338	490.21	517	401.9	90	14.5	Blue

Assay Class: High Sensitivity DNA Assay  
 Data Path: C:\...ents and Settings\Bioanalyzer\2012-04-17\2012-04-17\_002.xad

Created: 4/17/2012 10:13:12 AM  
 Modified: 4/17/2012 11:02:53 AM

**Electropherogram Summary Continued ...**



**Overall Results for sample 4 : CMW4 350BP Lib**

Number of peaks found: 8                      Corr. Area 1: 1,692.6  
 Noise: 0.2

**Peak table for sample 4 : CMW4 350BP Lib**

Peak	Size [bp]	Conc. [pg/μl]	Molarity [pmol/l]	Observations
1	35	125.00	5,411.3	Lower Marker
2	46	763.06	25,216.9	
3	333	15,917.61	72,524.1	
4	338	2,575.94	11,546.8	
5	346	23,221.69	101,627.9	
6	521	460.09	1,338.6	
7	550	230.02	634.2	
8	574	232.83	614.1	
9	8,285	1,985.70	363.1	
10	10,380	75.00	10.9	Upper Marker

**Region table for sample 4 : CMW4 350BP Lib**

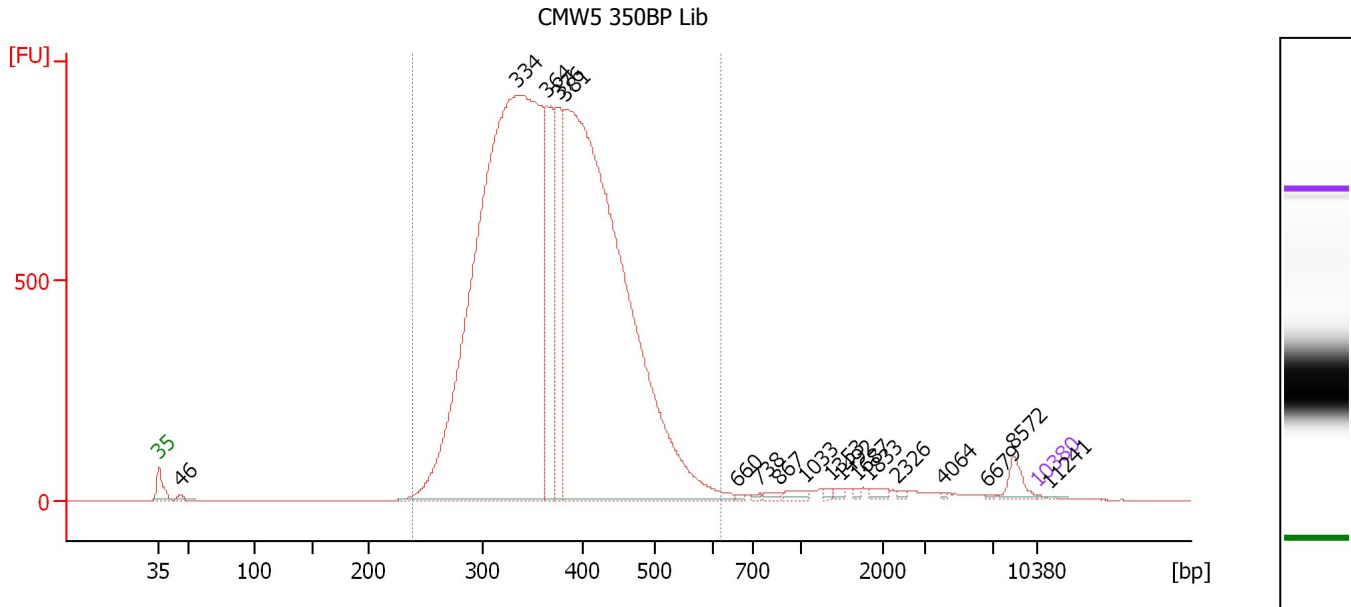
From [bp]	Molarity [pmol/l]	Average Size [bp]	Conc. [pg/μl]	To [bp]	Corr. Area	% of Total	Size distribution in CV [%]	Color
227	188,245.4	370	43,819.69	693	1,692.6	90	20.0	Blue



Assay Class: High Sensitivity DNA Assay  
 Data Path: C:\...ents and Settings\Bioanalyzer\2012-04-17\2012-04-17\_002.xad

Created: 4/17/2012 10:13:12 AM  
 Modified: 4/17/2012 11:02:53 AM

**Electropherogram Summary Continued ...**



**Overall Results for sample 5 : CMW5 350BP Lib**

Number of peaks found: 18      Corr. Area 1: 17,043.9  
 Noise: 0.1

**Peak table for sample 5 : CMW5 350BP Lib**

Peak	Size [bp]	Conc. [pg/μl]	Molarity [pmol/l]	Observations
1	35	125.00	5,411.3	Lower Marker
2	46	682.96	22,425.1	
3	334	189,476.64	858,921.1	
4	364	21,519.13	89,575.2	
5	376	17,184.93	69,289.6	
6	381	151,894.63	603,424.4	
7	660	235.01	539.6	
8	738	234.97	482.4	
9	867	511.44	894.0	
10	1,033	826.67	1,212.6	
11	1,353	331.69	371.4	
12	1,492	371.05	376.7	
13	1,687	266.60	239.4	
14	1,833	673.34	556.4	
15	2,326	261.89	170.6	
16	4,064	125.94	47.0	
17	6,679	132.47	30.1	
18	8,572	1,822.01	322.0	
19	10,380	75.00	10.9	Upper Marker
20	11,241	0.00	0.0	

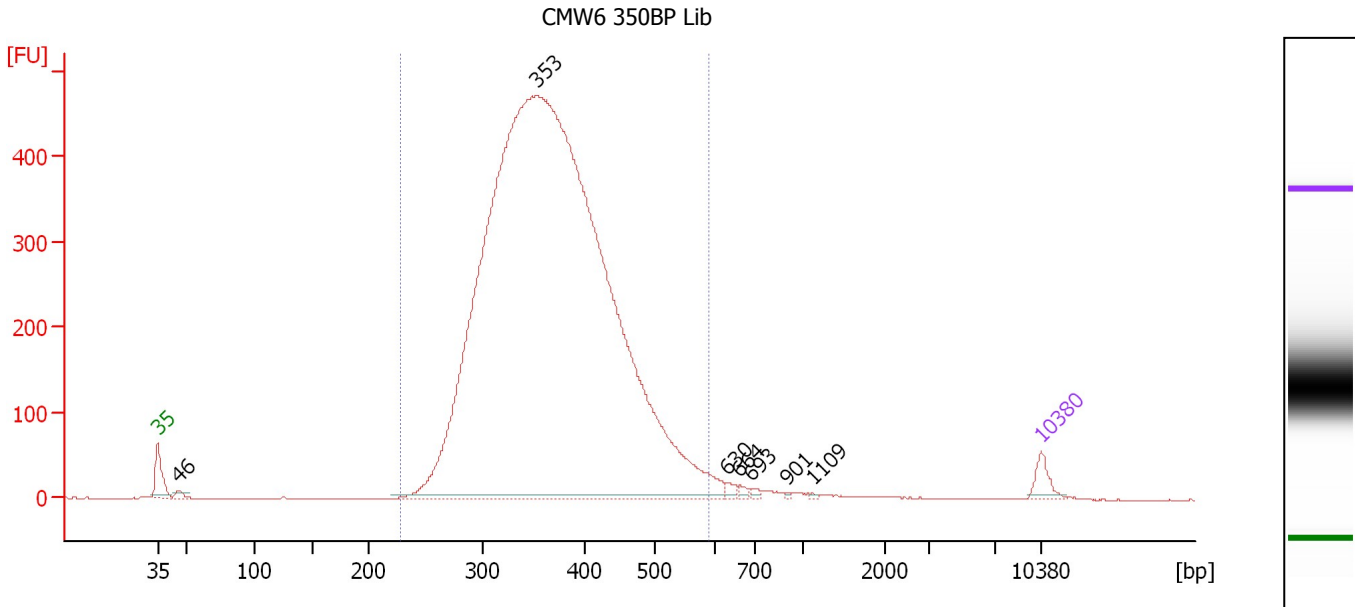
**Region table for sample 5 : CMW5 350BP Lib**

From [bp]	Molarity [pmol/l]	Average Size [bp]	Conc. [pg/μl]	To [bp]	Corr. Area	% of Total	Size distribution in CV [%]	Color
238	1,588,100.8	374	377,827.81	619	17,043.9	96	17.1	Blue

Assay Class: High Sensitivity DNA Assay  
 Data Path: C:\...ents and Settings\Bioanalyzer\2012-04-17\2012-04-17\_002.xad

Created: 4/17/2012 10:13:12 AM  
 Modified: 4/17/2012 11:02:53 AM

**Electropherogram Summary Continued ...**



**Overall Results for sample 6 : CMW6 350BP Lib**

Number of peaks found: 7                      Corr. Area 1: 7,628.0  
 Noise: 0.2

**Peak table for sample 6 : CMW6 350BP Lib**

Peak	Size [bp]	Conc. [pg/μl]	Molarity [pmol/l]	Observations
1	35	125.00	5,411.3	Lower Marker
2	46	37.71	1,230.5	
3	353	13,960.84	59,892.9	
4	630	31.84	76.6	
5	664	21.43	48.9	
6	693	17.46	38.2	
7	901	7.15	12.0	
8	1,109	6.73	9.2	
9	10,380	75.00	10.9	Upper Marker

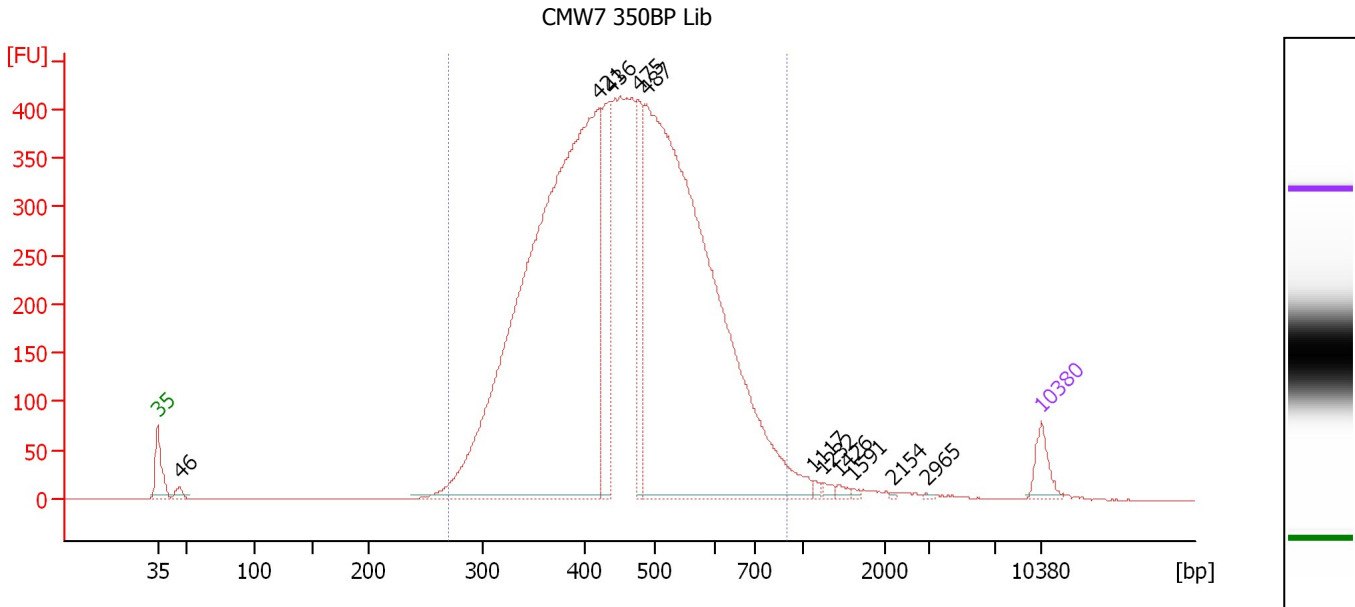
**Region table for sample 6 : CMW6 350BP Lib**

From [bp]	Molarity [pmol/l]	Average Size [bp]	Conc. [pg/μl]	To [bp]	Corr. Area	% of Total	Size distribution in CV [%]	Color
228	57,824.9	372	13,685.91	591	7,628.0	97	17.0	■

Assay Class: High Sensitivity DNA Assay  
 Data Path: C:\...ents and Settings\Bioanalyzer\2012-04-17\2012-04-17\_002.xad

Created: 4/17/2012 10:13:12 AM  
 Modified: 4/17/2012 11:02:53 AM

**Electropherogram Summary Continued ...**



**Overall Results for sample 7 : CMW7 350BP Lib**

Number of peaks found: 11      Corr. Area 1: 8,551.4  
 Noise: 0.2

**Peak table for sample 7 : CMW7 350BP Lib**

Peak	Size [bp]	Conc. [pg/μl]	Molarity [pmol/l]	Observations
1	35	125.00	5,411.3	Lower Marker
2	46	35.14	1,145.2	
3	421	4,315.94	15,541.3	
4	436	513.60	1,786.2	
5	475	382.41	1,218.8	
6	487	3,936.82	12,248.1	
7	1,117	12.79	17.3	
8	1,232	17.59	21.6	
9	1,426	16.12	17.1	
10	1,591	8.01	7.6	
11	2,154	4.04	2.8	
12	2,965	4.20	2.1	
13	10,380	75.00	10.9	Upper Marker

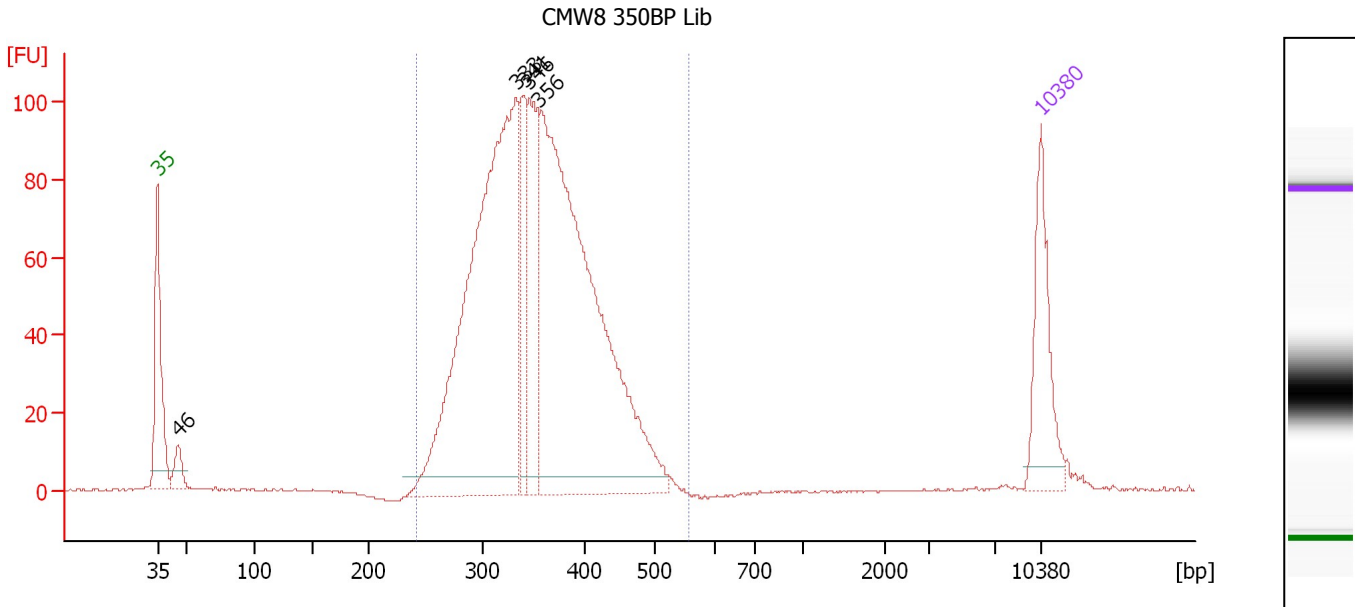
**Region table for sample 7 : CMW7 350BP Lib**

From [bp]	Molarity [pmol/l]	Average Size [bp]	Conc. [pg/μl]	To [bp]	Corr. Area	% of Total	Size distribution in CV [%]	Color
270	36,355.5	464	10,412.80	903	8,551.4	97	22.8	Blue

Assay Class: High Sensitivity DNA Assay  
 Data Path: C:\...ents and Settings\Bioanalyzer\2012-04-17\2012-04-17\_002.xad

Created: 4/17/2012 10:13:12 AM  
 Modified: 4/17/2012 11:02:53 AM

**Electropherogram Summary Continued ...**



**Overall Results for sample 8 : CMW8 350BP Lib**

Number of peaks found: 5                      Corr. Area 1: 1,516.0  
 Noise: 0.2

**Peak table for sample 8 : CMW8 350BP Lib**

Peak	Size [bp]	Conc. [pg/μl]	Molarity [pmol/l]	Observations
1	35	125.00	5,411.3	Lower Marker
2	46	28.01	927.2	
3	333	679.37	3,087.9	
4	341	93.77	416.9	
5	346	133.09	582.9	
6	356	719.02	3,062.6	
7	10,380	75.00	10.9	Upper Marker

**Region table for sample 8 : CMW8 350BP Lib**

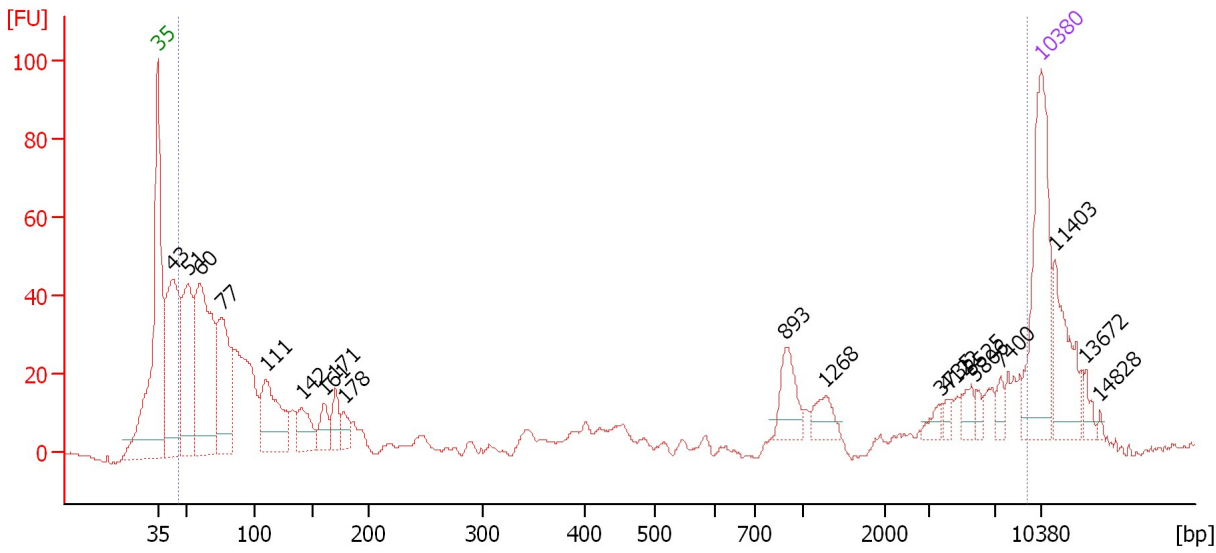
From [bp]	Molarity [pmol/l]	Average Size [bp]	Conc. [pg/μl]	To [bp]	Corr. Area	% of Total	Size distribution in CV [%]	Color
241	7,008.5	354	1,592.69	556	1,516.0	98	15.0	Blue

Assay Class: High Sensitivity DNA Assay  
 Data Path: C:\...ents and Settings\Bioanalyzer\2012-04-17\2012-04-17\_002.xad

Created: 4/17/2012 10:13:12 AM  
 Modified: 4/17/2012 11:02:53 AM

**Electropherogram Summary Continued ...**

33 (1:10) Rima



**Overall Results for sample 9 : 33 (1:10) Rima**

Number of peaks found: 19                      Corr. Area 1: 853.9  
 Noise: 0.2

**Peak table for sample 9 : 33 (1:10) Rima**

Peak	Size [bp]	Conc. [pg/μl]	Molarity [pmol/l]	Observations
1	35	125.00	5,411.3	Lower Marker
2	43	170.72	6,002.3	
3	51	117.70	3,480.8	
4	60	188.63	4,762.6	
5	77	108.17	2,137.5	
6	111	77.02	1,055.1	
7	142	29.55	316.1	
8	161	19.90	187.1	
9	171	20.14	178.9	
10	178	12.47	106.3	
11	893	27.62	46.8	
12	1,268	14.81	17.7	
13	3,735	5.86	2.4	
14	4,122	4.68	1.7	
15	5,525	8.92	2.4	
16	5,806	4.51	1.2	
17	7,400	6.06	1.2	
18	10,380	75.00	10.9	Upper Marker
19	11,403	0.00	0.0	
20	13,672	0.00	0.0	
21	14,828	0.00	0.0	

**Region table for sample 9 : 33 (1:10) Rima**

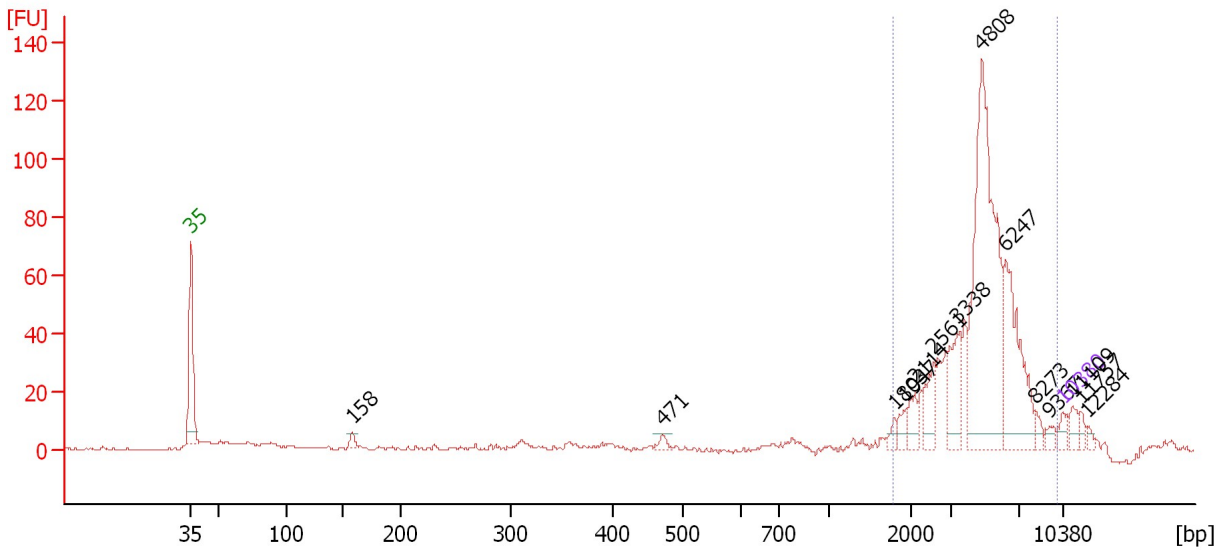
From [bp]	Molarity [pmol/l]	Average Size [bp]	Conc. [pg/μl]	To [bp]	Corr. Area	% of Total	Size distribution in CV [%]	Color
46	14,872.9	1,580	923.13	9,383	853.9	81	100.0	Blue

Assay Class: High Sensitivity DNA Assay  
 Data Path: C:\...ents and Settings\Bioanalyzer\2012-04-17\2012-04-17\_002.xad

Created: 4/17/2012 10:13:12 AM  
 Modified: 4/17/2012 11:02:53 AM

**Electropherogram Summary Continued ...**

8 (1:10) Rima



**Overall Results for sample 10 : 8 (1:10) Rima**

Number of peaks found: 14                      Corr. Area 1: 506.7  
 Noise: 0.4

**Peak table for sample 10 : 8 (1:10) Rima**

Peak	Size [bp]	Conc. [pg/μl]	Molarity [pmol/l]	Observations
1	35	125.00	5,411.3	Lower Marker
2	158	104.55	1,002.1	
3	471	66.44	213.5	
4	1,803	65.18	54.8	
5	1,947	104.71	81.5	
6	2,114	172.92	124.0	
7	2,561	287.14	169.9	
8	3,338	435.19	197.5	
9	4,808	2,631.74	829.3	
10	6,247	1,014.20	246.0	
11	8,273	73.00	13.4	
12	9,367	62.60	10.1	
13	10,380	75.00	10.9	Upper Marker
14	11,109	0.00	0.0	
15	11,757	0.00	0.0	
16	12,284	0.00	0.0	

**Region table for sample 10 : 8 (1:10) Rima**

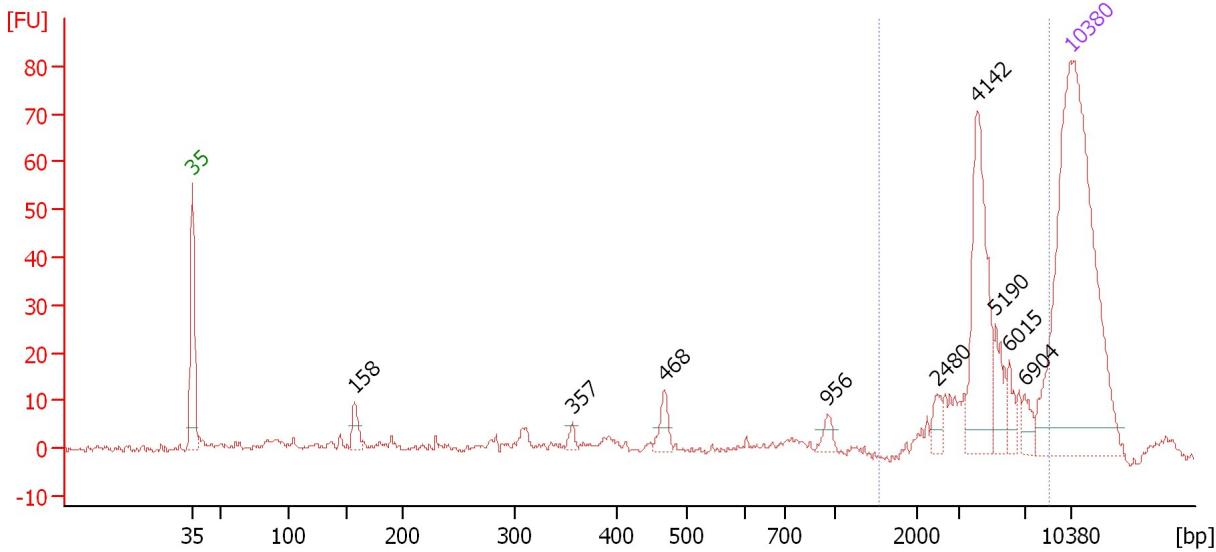
From [bp]	Molarity [pmol/l]	Average Size [bp]	Conc. [pg/μl]	To [bp]	Corr. Area	% of Total	Size distribution in CV [%]	Color
1,794	1,922.1	4,823	5,416.25	9,940	506.7	83	34.6	Blue

Assay Class: High Sensitivity DNA Assay  
 Data Path: C:\...ents and Settings\Bioanalyzer\2012-04-17\2012-04-17\_002.xad

Created: 4/17/2012 10:13:12 AM  
 Modified: 4/17/2012 11:02:53 AM

**Electropherogram Summary Continued ...**

34 (1:15) Rima



**Overall Results for sample 11 : 34 (1:15) Rima**

Number of peaks found: 9                      Corr. Area 1: 192.8  
 Noise: 0.6

**Peak table for sample 11 : 34 (1:15) Rima**

Peak	Size [bp]	Conc. [pg/μl]	Molarity [pmol/l]	Observations
1	35	125.00	5,411.3	Lower Marker
2	158	6.36	61.1	
3	357	1.93	8.2	
4	468	5.10	16.5	
5	956	2.72	4.3	
6	2,480	3.04	1.9	
7	4,142	29.39	10.8	
8	5,190	6.42	1.9	
9	6,015	3.40	0.9	
10	6,904	3.09	0.7	
11	10,380	75.00	10.9	Upper Marker

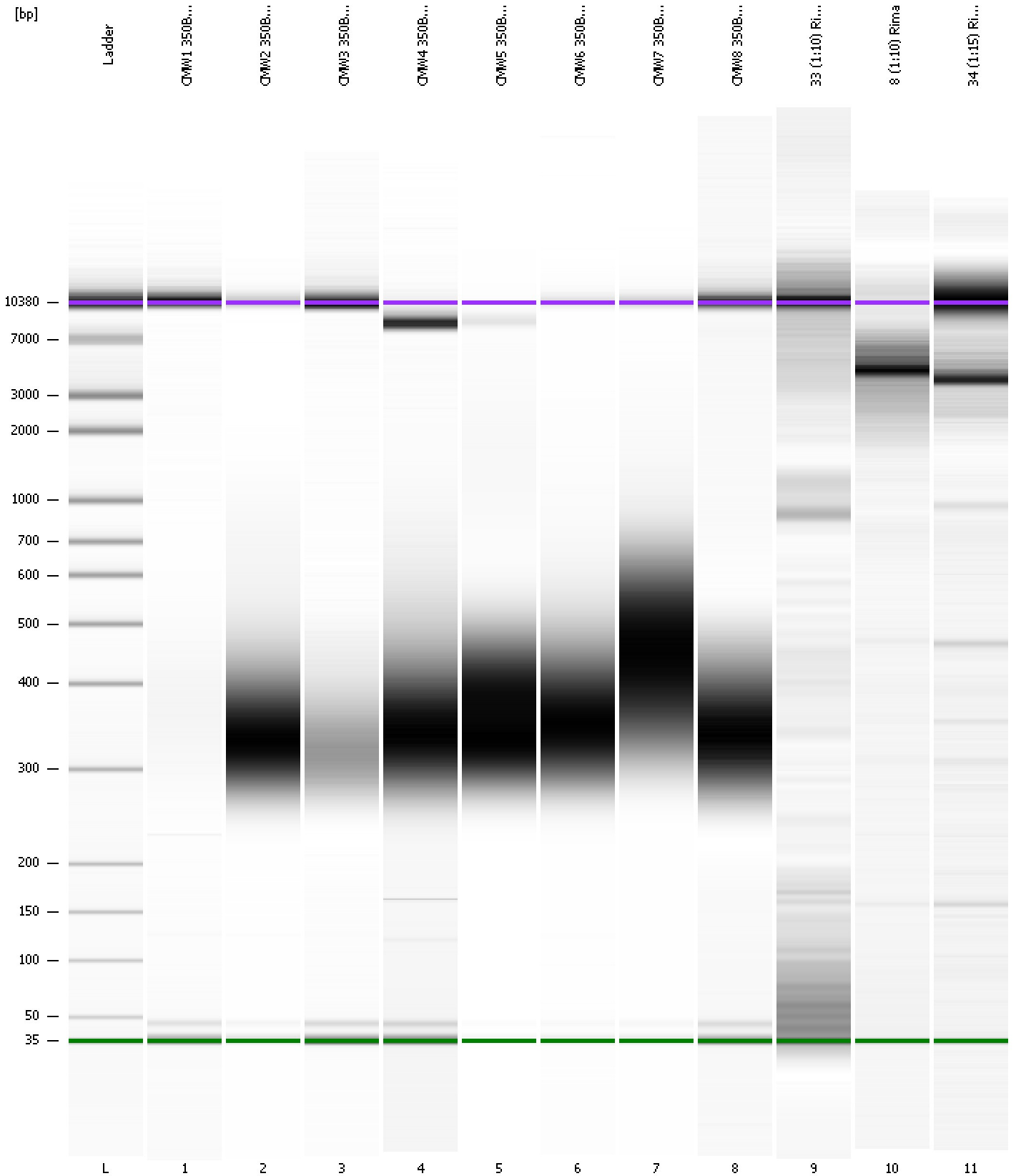
**Region table for sample 11 : 34 (1:15) Rima**

From [bp]	Molarity [pmol/l]	Average Size [bp]	Conc. [pg/μl]	To [bp]	Corr. Area	% of Total	Size distribution in CV [%]	Color
1,540	21.2	4,714	57.44	8,753	192.8	51	34.6	Blue

Assay Class: High Sensitivity DNA Assay  
Data Path: C:\...ents and Settings\Bioanalyzer\2012-04-17\2012-04-17\_002.xad

Created: 4/17/2012 10:13:12 AM  
Modified: 4/17/2012 11:02:53 AM

**Gel Image**





Assay Class: High Sensitivity DNA Assay  
 Data Path: C:\...ents and Settings\Bioanalyzer\2012-04-17\2012-04-17\_002.xad

Created: 4/17/2012 10:13:12 AM  
 Modified: 4/17/2012 11:02:53 AM

**Run Logbook**

Description	Number	Source	Category	Sub Category	Time	Time Zone	User	Host
Run ended on port 1 (Number of wells acquired: 12)		Instrument	Run		4/17/2012 10:54:30 AM	(GMT --07:00) Pacific Standard Time	UC Davis	D8XSMGH1
Run started on port 1 (File: C:\Documents and Settings\Bioanalyzer\2012-04-17\2012-04-17_002.xad)		Instrument	Run		4/17/2012 10:13:17 AM	(GMT --07:00) Pacific Standard Time	UC Davis	D8XSMGH1
Product Number : G2938B		Instrument	Run		4/17/2012 10:13:17 AM	(GMT --07:00) Pacific Standard Time	UC Davis	D8XSMGH1
Name :		Instrument	Run		4/17/2012 10:13:17 AM	(GMT --07:00) Pacific Standard Time	UC Davis	D8XSMGH1
Vendor : Agilent Technologies		Instrument	Run		4/17/2012 10:13:17 AM	(GMT --07:00) Pacific Standard Time	UC Davis	D8XSMGH1
Serial# : DE13701086		Instrument	Run		4/17/2012 10:13:17 AM	(GMT --07:00) Pacific Standard Time	UC Davis	D8XSMGH1
Firmware : C.01.069		Instrument	Run		4/17/2012 10:13:17 AM	(GMT --07:00) Pacific Standard Time	UC Davis	D8XSMGH1
Cartridge : Electrode		Instrument	Run		4/17/2012 10:13:17 AM	(GMT --07:00) Pacific Standard Time	UC Davis	D8XSMGH1