

Assay Class: High Sensitivity DNA Assay
Data Path: C:\...and Settings\Bioanalyzer\2012-04-17\2012-04-17_005_soni.xad

Created: 4/17/2012 3:06:24 PM
Modified: 4/17/2012 3:46:45 PM

Electrophoresis File Run Summary

Instrument Information:

Instrument Name: DE13701086 Firmware: C.01.069
Serial#: DE13701086 Type: G2938B

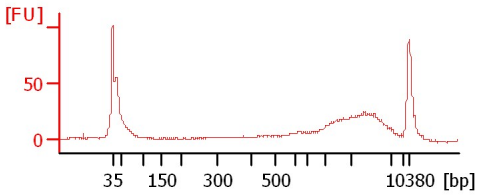
Assay Information:

Assay Origin Path: C:\Program Files\Agilent\2100 bioanalyzer\2100 expert\assays\dsDNA\High Sensitivity DNA.xsy
Assay Class: High Sensitivity DNA Assay
Version: 1.03
Assay Comments: Copyright © 2003-2010 Agilent Technologies

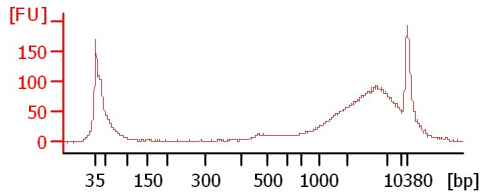
Chip Information:

Chip Lot #:
Reagent Kit Lot #:
Chip Comments:

7 350bp 1:20



7 350bp 1:20



Assay Class: High Sensitivity DNA Assay
Data Path: C:\...and Settings\Bioanalyzer\2012-04-17\2012-04-17_005_soni.xad

Created: 4/17/2012 3:06:24 PM
Modified: 4/17/2012 3:46:45 PM

Electrophoresis File Run Summary (Chip Summary)

Sample Name	Sample Comment	Rest. Digest	Status	Observation	Result Label	Result Color
7 350bp 1:20		<input type="checkbox"/>	✓			
7 350bp 1:20		<input type="checkbox"/>	✓			
Ladder		<input type="checkbox"/>	✓			

Chip Lot #**Reagent Kit Lot #****Chip Comments :**

Assay Class: High Sensitivity DNA Assay
Data Path: C:\...and Settings\Bioanalyzer\2012-04-17\2012-04-17_005_soni.xad

Created: 4/17/2012 3:06:24 PM
Modified: 4/17/2012 3:46:45 PM

Electrophoresis Assay Details

General Analysis Settings

Number of Available Sample and Ladder Wells (Max.) : 12
Minimum Visible Range [s] : 32
Maximum Visible Range [s] : 138
Start Analysis Time Range [s] : 33
End Analysis Time Range [s] : 137.5
Ladder Concentration [pg/μl] : 1950
Uses Standard Area for Ladder Fragments
Lower Marker Concentration [pg/μl] : 125
Upper Marker Concentration [pg/μl] : 75
Used Upper Marker for Quantitation
Standard Curve Fit is Point to Point
Show Data Aligned to Lower and Upper Marker

Integrator Settings

Integration Start Time [s] : 33.05
Integration End Time [s] : 137
Slope Threshold : 0.8
Height Threshold [FU] : 5
Area Threshold : 0.1
Width Threshold [s] : 0.6
Baseline Plateau [s] : 0.5

Filter Settings

Filter Width [s] : 0.5
Polynomial Order : 4

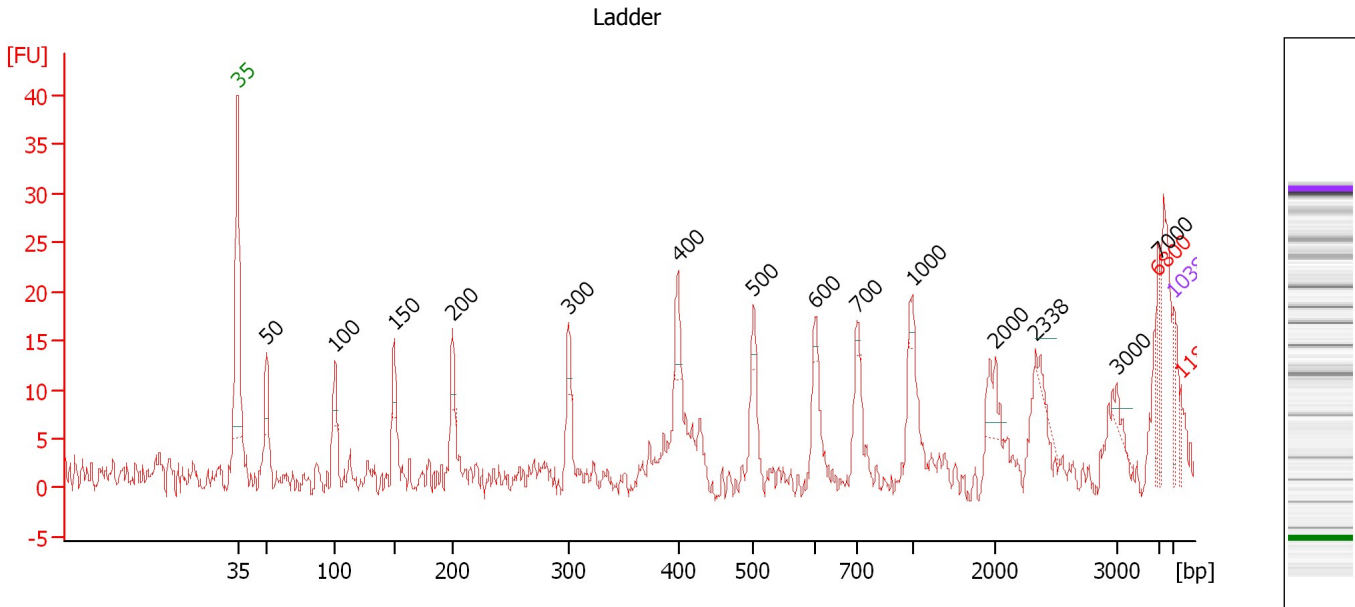
Ladder

Ladder Peak	Size	Area
1	35	160
2	50	210
3	100	208
4	150	221
5	200	242
6	300	270
7	400	305
8	500	306
9	600	336
10	700	321
11	1000	366
12	2000	413
13	3000	411
14	7000	400
15	10380	214

Assay Class: High Sensitivity DNA Assay
 Data Path: C:\...and Settings\Bioanalyzer\2012-04-17\2012-04-17_005_soni.xad

Created: 4/17/2012 3:06:24 PM
 Modified: 4/17/2012 3:46:45 PM

Electropherogram Summary



Overall Results for Ladder

Noise: 1.9

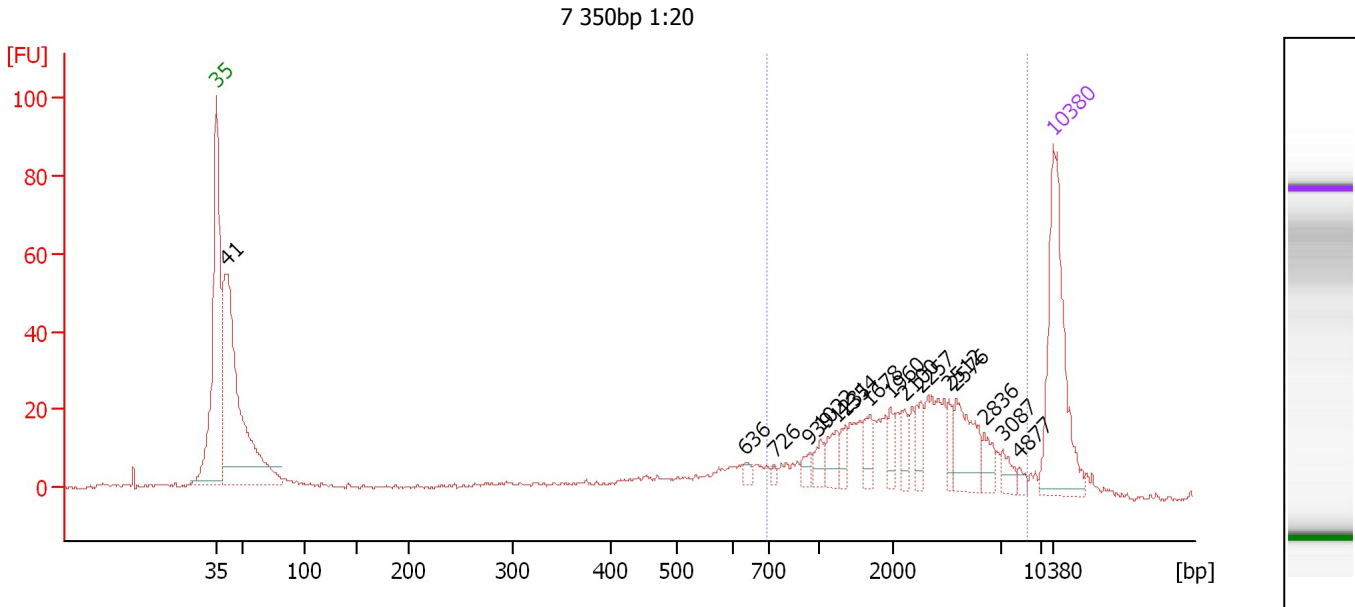
Peak table for Ladder

Peak	Size [bp]	Conc. [pg/μl]	Molarity [pmol/l]	Observations
1	35	125.00	5,411.3	Lower Marker
2	50	150.00	4,545.5	Ladder Peak
3	100	150.00	2,272.7	Ladder Peak
4	150	150.00	1,515.2	Ladder Peak
5	200	150.00	1,136.4	Ladder Peak
6	300	150.00	757.6	Ladder Peak
7	400	150.00	568.2	Ladder Peak
8	500	150.00	454.5	Ladder Peak
9	600	150.00	378.8	Ladder Peak
10	700	150.00	324.7	Ladder Peak
11	1,000	150.00	227.3	Ladder Peak
12	2,000	150.00	113.6	Ladder Peak
13	2,338	0.00	0.0	
14	3,000	150.00	75.8	Ladder Peak
15	6,800	0.00	0.0	excluded peak
16	7,000	150.00	32.5	Ladder Peak
17	10,380	75.00	10.9	Upper Marker
18	11,829	0.00	0.0	excluded peak

Assay Class: High Sensitivity DNA Assay
 Data Path: C:\...and Settings\Bioanalyzer\2012-04-17\2012-04-17_005_soni.xad

Created: 4/17/2012 3:06:24 PM
 Modified: 4/17/2012 3:46:45 PM

Electropherogram Summary Continued ...



Overall Results for sample 7 : 7 350bp 1:20

Number of peaks found: 16 Corr. Area 1: 347.8
 Noise: 0.4

Peak table for sample 7 : 7 350bp 1:20

Peak	Size [bp]	Conc. [pg/μl]	Molarity [pmol/l]	Observations
1	35	125.00	5,411.3	Lower Marker
2	41	282.50	10,385.5	
3	636	4.19	10.0	
4	726	2.52	5.3	
5	939	5.24	8.5	
6	1,022	8.27	12.3	
7	1,231	12.10	14.9	
8	1,354	7.92	8.9	
9	1,678	11.70	10.6	
10	1,960	7.49	5.8	
11	2,100	8.10	5.8	
12	2,257	11.13	7.5	
13	2,512	8.13	4.9	
14	2,576	28.50	16.8	
15	2,836	9.21	4.9	
16	3,087	7.05	3.5	
17	4,877	3.15	1.0	
18	10,380	75.00	10.9	Upper Marker

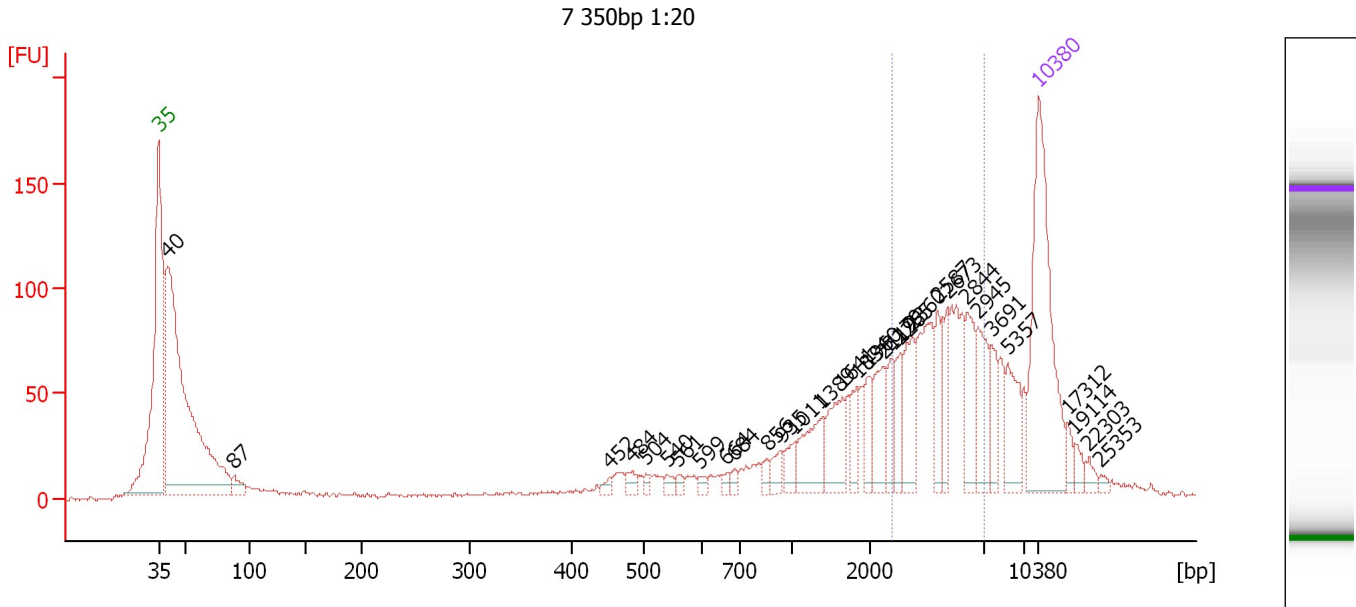
Region table for sample 7 : 7 350bp 1:20

From [bp]	Molarity [pmol/l]	Average Size [bp]	Conc. [pg/μl]	To [bp]	Corr. Area	% of Total	Size distribution in CV [%]	Color
694	204.1	2,076	231.72	5,644	347.8	46	37.7	Blue

Assay Class: High Sensitivity DNA Assay
 Data Path: C:\...and Settings\Bioanalyzer\2012-04-17\2012-04-17_005_soni.xad

Created: 4/17/2012 3:06:24 PM
 Modified: 4/17/2012 3:46:45 PM

Electropherogram Summary Continued ...



Overall Results for sample 8 : 7 350bp 1:20

Number of peaks found: 31 Corr. Area 1: 561.1
 Noise: 1.0

Peak table for sample 8 : 7 350bp 1:20


Peak	Size [bp]	Conc. [pg/μl]	Molarity [pmol/l]	Observations
1	35	125.00	5,411.3	Lower Marker
2	40	302.99	11,447.1	
3	87	9.20	159.6	
4	452	2.82	9.5	
5	484	4.18	13.1	
6	504	2.59	7.8	
7	540	3.46	9.7	
8	561	2.83	7.7	
9	599	2.43	6.1	
10	664	2.66	6.1	
11	684	2.88	6.4	
12	856	3.82	6.8	
13	935	6.39	10.3	
14	1,011	7.48	11.2	
15	1,389	22.18	24.2	
16	1,641	21.17	19.5	
17	1,834	10.59	8.7	
18	1,960	10.09	7.8	
19	2,119	18.21	13.0	
20	2,179	10.55	7.3	
21	2,265	11.76	7.9	
22	2,360	20.06	12.9	
23	2,587	13.50	7.9	
24	2,673	13.73	7.8	
25	2,844	20.25	10.8	
26	2,945	20.95	10.8	

Assay Class: High Sensitivity DNA Assay
 Data Path: C:\...and Settings\Bioanalyzer\2012-04-17\2012-04-17_005_soni.xad


Created: 4/17/2012 3:06:24 PM
 Modified: 4/17/2012 3:46:45 PM

Electropherogram Summary Continued ...

... Peak table for sample 8 : 7 350bp 1:20

Peak	Size [bp]	Conc. [pg/μl]	Molarity [pmol/l]	Observations
27	3,691	11.51	4.7	
28	5,357	19.99	5.7	
29	 10,380	75.00	10.9	Upper Marker
30	17,312	0.00	0.0	
31	19,114	0.00	0.0	
32	22,303	0.00	0.0	
33	25,353	0.00	0.0	

Region table for sample 8 : 7 350bp 1:20

From [bp]	Molarity [pmol/l]	Average Size [bp]	Conc. [pg/μl]	To [bp]	Corr. Area	% of Total	Size distribution in CV [%]	Color
2,184	93.2	2,601	160.01	2,994	561.1	28	8.8	

Assay Class: High Sensitivity DNA Assay
Data Path: C:\...and Settings\Bioanalyzer\2012-04-17\2012-04-17_005_soni.xad

Created: 4/17/2012 3:06:24 PM
Modified: 4/17/2012 3:46:45 PM

Gel Image

Assay Class: High Sensitivity DNA Assay
 Data Path: C:\...and Settings\Bioanalyzer\2012-04-17\2012-04-17_005_soni.xad

Created: 4/17/2012 3:06:24 PM
 Modified: 4/17/2012 3:46:45 PM

Run Logbook

Description	Number	Source	Category	Sub Category	Time	Time Zone	User	Host
Run ended on port 1 (Number of wells acquired: 9)		Instrument	Run		4/17/2012 3:38:23 PM	(GMT --07:00) Pacific Standard Time	UC Davis	D8XSMGH1
Run started on port 1 (File: C:\Documents and Settings\Bioanalyzer\2012-04-17\2012-04-17_005.xad)		Instrument	Run		4/17/2012 3:06:24 PM	(GMT --07:00) Pacific Standard Time	UC Davis	D8XSMGH1
Product Number : G2938B		Instrument	Run		4/17/2012 3:06:24 PM	(GMT --07:00) Pacific Standard Time	UC Davis	D8XSMGH1
Name :		Instrument	Run		4/17/2012 3:06:24 PM	(GMT --07:00) Pacific Standard Time	UC Davis	D8XSMGH1
Vendor : Agilent Technologies		Instrument	Run		4/17/2012 3:06:24 PM	(GMT --07:00) Pacific Standard Time	UC Davis	D8XSMGH1
Serial# : DE13701086		Instrument	Run		4/17/2012 3:06:24 PM	(GMT --07:00) Pacific Standard Time	UC Davis	D8XSMGH1
Firmware : C.01.069		Instrument	Run		4/17/2012 3:06:24 PM	(GMT --07:00) Pacific Standard Time	UC Davis	D8XSMGH1
Cartridge : Electrode		Instrument	Run		4/17/2012 3:06:24 PM	(GMT --07:00) Pacific Standard Time	UC Davis	D8XSMGH1